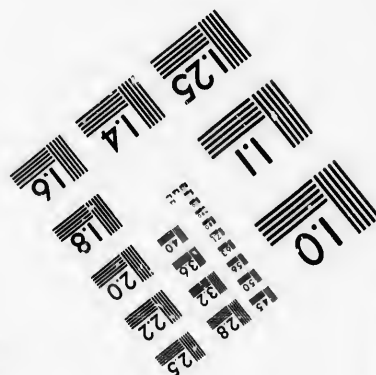
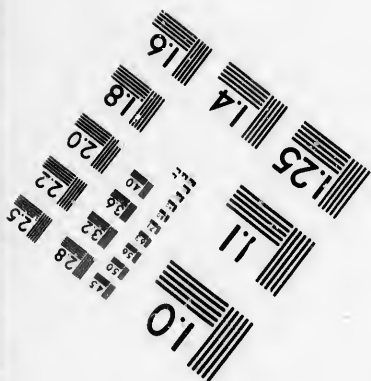
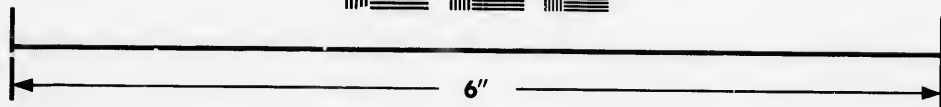
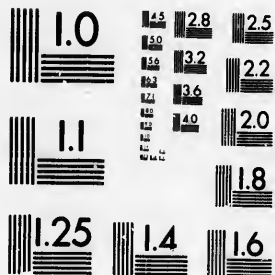


**IMAGE EVALUATION
TEST TARGET (MT-3)**



**Photographic
Sciences
Corporation**

23 WEST MAIN STREET
WEBSTER, N.Y. 14580
(716) 872-4503



**CIHM/ICMH
Microfiche
Series.**

**CIHM/ICMH
Collection de
microfiches.**



Canadian Institute for Historical Microreproductions / Institut canadien de microreproductions historiques



© 1986

The copy filmed here has been reproduced thanks to the generosity of:

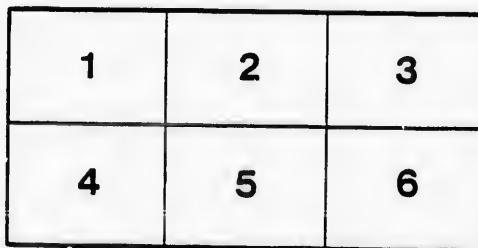
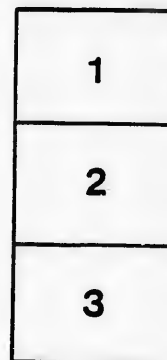
Manuscript Division
Public Archives of Canada

The images appearing here are the best quality possible considering the condition and legibility of the original copy and in keeping with the filming contract specifications.

Original copies in printed paper covers are filmed beginning with the front cover and ending on the last page with a printed or illustrated impression, or the back cover when appropriate. All other original copies are filmed beginning on the first page with a printed or illustrated impression, and ending on the last page with a printed or illustrated impression.

The last recorded frame on each microfiche shall contain the symbol \rightarrow (meaning "CONTINUED"), or the symbol ∇ (meaning "END"), whichever applies.

Maps, plates, charts, etc., may be filmed at different reduction ratios. Those too large to be entirely included in one exposure are filmed beginning in the upper left hand corner, left to right and top to bottom, as many frames as required. The following diagrams illustrate the method:



L'exemplaire filmé fut reproduit grâce à la générosité de:

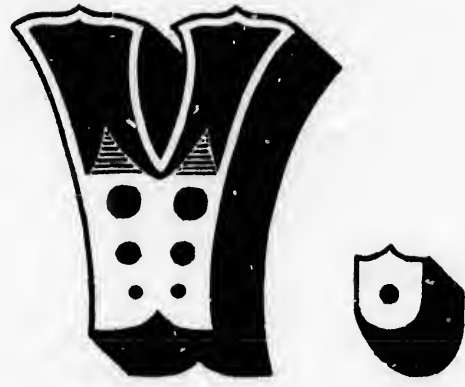
Division des manuscrits
Archives publiques du Canada

Les images suivantes ont été reproduites avec le plus grand soin, compte tenu de la condition et de la netteté de l'exemplaire filmé, et en conformité avec les conditions du contrat de filmage.

Les exemplaires originaux dont la couverture en papier est imprimée sont filmés en commençant par le premier plat et en terminant soit par la dernière page qui comporte une empreinte d'impression ou d'illustration, soit par le second plat, selon le cas. Tous les autres exemplaires originaux sont filmés en commençant par la première page qui comporte une empreinte d'impression ou d'illustration et en terminant par la dernière page qui comporte une telle empreinte.

Un des symboles suivants apparaîtra sur la dernière image de chaque microfiche, selon le cas: le symbole \rightarrow signifie "A SUIVRE", le symbole ∇ signifie "FIN".

Les cartes, planches, tableaux, etc., peuvent être filmés à des taux de réduction différents. Lorsque le document est trop grand pour être reproduit en un seul cliché, il est filmé à partir de l'angle supérieur gauche, de gauche à droite, et de haut en bas, en prenant le nombre d'images nécessaire. Les diagrammes suivants illustrent la méthode.



PROCLAMATION

ELECTORAL DIVISION OF QUEEN'S, } **Public Notice**
To Wit:
Electors of the Electoral Division of Queen's, that, in obedience to the First day of the month of September, one thousand eight hundred and ...
Electors, at the Court House

TOWN OF

IN THE COUNTY OF



R.

AMMATION

Notice is hereby given to the
in obedience to Her Majesty's Writ, to me directed, and bearing date
sand eight hundred and sixty-four, I require the presence of the said
the Court House Square, in the

F LINDSAY,
TY OF VICTORIA, ON

IN THE COUNTY OF

Monday, the 1

Day of the month of September,
red and Sixty-four, at One o'clock in the afternoon, for the purpos
tive Council of this Province. And that in case a Poll be demand
Poll will be opene

THIRD DAY OF THE MO

In the North Riding of the County of Ontario
township of Scugog, in the township of Brock, in the township of
of Scott, in the United townships of Mara and Rama.

In the County of Victoria.--In the township
in the township of Carden, in the united townships of Dalton, Ryd
the township of Fenelon, in the township of Bexley. in the united
Emily, in the township of Verulam, in the township of Sommervil
Hinden, in the North Ward of the Town of Lindsay, in the South
Town of Lindsay.

In the West Riding of the County of Durham.--In the
wright, in the township of Clarke, in the West Ward of the Town of Bowmanville, in
Town of Bowmanville, in the Village of Newcastle: Of all which, every person is here

Given under my hand, at the Town of Whitby, County of
the year one thousand eight hundred and sixty-four.

J. I

PRINTED BY W. H. HIGGINS, CHR

TY OF VICTORIA, ON

e Twenty-Sixth

ember, one thousand eight hundred-
for the purpose of electing a person to represent them in the Legisla-
oll be demanded, and allowed in the manner by law prescribed, such
will be opened on the

HE MONTH OF OCTOBER.

**y of Ontario.--In the township of Reach, in the
e township of Thorah, in the township of Uxbridge, in the township**

**township of Mariposa, in the township of Eldon,
f Dalton, Ryde, Draper, and McCauley, in the township of Ops, in
in the united townships of Laxton and Digby, in the township of
of Sommerville, in the united townships of Lutterworth, Anson and
, in the South Ward of the Town of Lindsay, in the East Ward of the**

**am.--In the township of Darlington, in the township of Cart-
of Bowmanville, in the South V ard of the Town of Bowmanville, in the North Ward of the
very person is hereby required to take notice, and to govern himself accordingly.**

**Whitby, County of Ontario, this Ninth day of the month of September, in
ty-four.**

J. HAM PERRY,

RETURNING OFFICER.

INS, CHRONICLE OFFICE, WHITBY.

