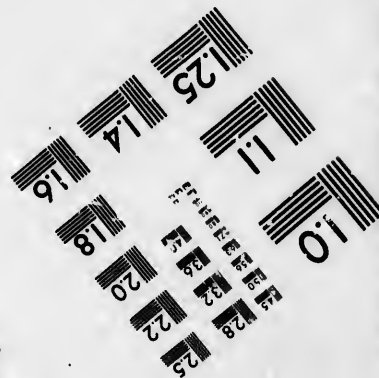
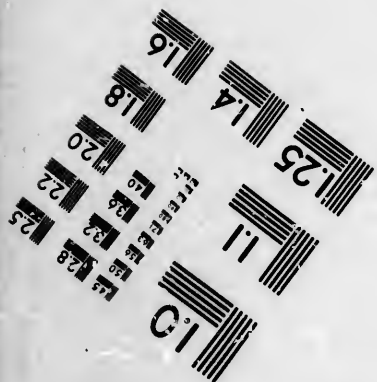
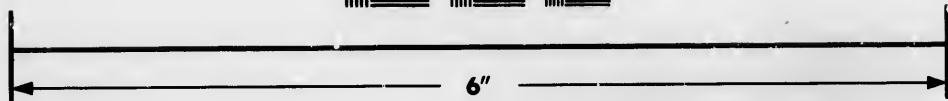
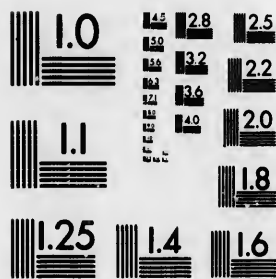


**IMAGE EVALUATION
TEST TARGET (MT-3)**



**Photographic
Sciences
Corporation**

23 WEST MAIN STREET
WEBSTER, N.Y. 14580
(716) 872-4503

**CIHM/ICMH
Microfiche
Series.**

**CIHM/ICMH
Collection de
microfiches.**



Canadian Institute for Historical Microreproductions / Institut canadien de microreproductions historiques

© 1985

Technical and Bibliographic Notes/Notes techniques et bibliographiques

The Institute has attempted to obtain the best original copy available for filming. Features of this copy which may be bibliographically unique, which may alter any of the images in the reproduction, or which may significantly change the usual method of filming, are checked below.

L'Institut a microfilmé le meilleur exemplaire qu'il lui a été possible de se procurer. Les détails de cet exemplaire qui sont peut-être uniques du point de vue bibliographique, qui peuvent modifier une image reproduite, ou qui peuvent exiger une modification dans la méthode normale de filmage sont indiqués ci-dessous.

- | | |
|--|--|
| <input type="checkbox"/> Coloured covers/
Couverture de couleur | <input type="checkbox"/> Coloured pages/
Pages de couleur |
| <input type="checkbox"/> Covers damaged/
Couverture endommagée | <input type="checkbox"/> Pages damaged/
Pages endommagées |
| <input type="checkbox"/> Covers restored and/or laminated/
Couverture restaurée et/ou pelliculée | <input type="checkbox"/> Pages restored and/or laminated/
Pages restaurées et/ou pelliculées |
| <input type="checkbox"/> Cover title missing/
Le titre de couverture manque | <input checked="" type="checkbox"/> Pages discoloured, stained or foxed/
Pages décolorées, tachetées ou piquées |
| <input type="checkbox"/> Coloured maps/
Cartes géographiques en couleur | <input type="checkbox"/> Pages detached/
Pages détachées |
| <input type="checkbox"/> Coloured ink (i.e. other than blue or black)/
Encre de couleur (i.e. autre que bleue ou noire) | <input checked="" type="checkbox"/> Showthrough/
Transparence |
| <input type="checkbox"/> Coloured plates and/or illustrations/
Planches et/ou illustrations en couleur | <input type="checkbox"/> Quality of print varies/
Qualité inégale de l'impression |
| <input type="checkbox"/> Bound with other material/
Relié avec d'autres documents | <input type="checkbox"/> Includes supplementary material/
Comprend du matériel supplémentaire |
| <input type="checkbox"/> Tight binding may cause shadows or distortion
along interior margin/
Lars liure serrée peut causer de l'ombre ou de la
distorsion le long de la marge intérieure | <input type="checkbox"/> Only edition available/
Seule édition disponible |
| <input type="checkbox"/> Blank leaves added during restoration may
appear within the text. Whenever possible, these
have been omitted from filming/
Il se peut que certaines pages blanches ajoutées
lors d'une restauration apparaissent dans le texte,
mais, lorsque cela était possible, ces pages n'ont
pas été filmées. | <input type="checkbox"/> Pages wholly or partially obscured by errata
slips, tissues, etc., have been refilmed to
ensure the best possible image/
Les pages totalement ou partiellement
obscurcies par un feuillet d'errata, une pelure,
etc., ont été filmées à nouveau de façon à
obtenir la meilleure image possible. |
| <input checked="" type="checkbox"/> Additional comments:/ 1 sheet (verso blank)
Commentaires supplémentaires: | |

This item is filmed at the reduction ratio checked below/
Ce document est filmé au taux de réduction indiqué ci-dessous.

10X	12X	14X	16X	18X	20X	22X	24X	26X	28X	30X	32X
						✓					

The copy filmed here has been reproduced thanks to the generosity of:

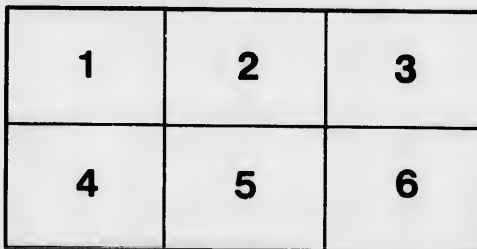
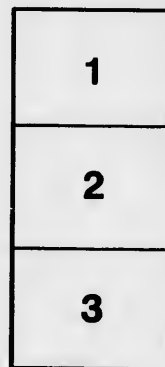
National Library of Canada

The images appearing here are the best quality possible considering the condition and legibility of the original copy and in keeping with the filming contract specifications.

Original copies in printed paper covers are filmed beginning with the front cover and ending on the last page with a printed or illustrated impression, or the back cover when appropriate. All other original copies are filmed beginning on the first page with a printed or illustrated impression, and ending on the last page with a printed or illustrated impression.

The last recorded frame on each microfiche shall contain the symbol \rightarrow (meaning "CONTINUED"), or the symbol ∇ (meaning "END"), whichever applies.

Maps, plates, charts, etc., may be filmed at different reduction ratios. Those too large to be entirely included in one exposure are filmed beginning in the upper left hand corner, left to right and top to bottom, as many frames as required. The following diagrams illustrate the method:



L'exemplaire filmé fut reproduit grâce à la générosité de:

Bibliothèque nationale du Canada

Les images suivantes ont été reproduites avec le plus grand soin, compte tenu de la condition et de la netteté de l'exemplaire filmé, et en conformité avec les conditions du contrat de filmage.

Les exemplaires originaux dont la couverture en papier est imprimée sont filmés en commençant par le premier plat et en terminant soit par la dernière page qui comporte une empreinte d'impression ou d'illustration, soit par le second plat, selon le cas. Tous les autres exemplaires originaux sont filmés en commençant par la première page qui comporte une empreinte d'impression ou d'illustration et en terminant par la dernière page qui comporte une telle empreinte.

Un des symboles suivants apparaîtra sur la dernière image de chaque microfiche, selon le cas: le symbole \rightarrow signifie "A SUIVRE", le symbole ∇ signifie "FIN".

Les cartes, planches, tableaux, etc., peuvent être filmés à des taux de réduction différents. Lorsque le document est trop grand pour être reproduit en un seul cliché, il est filmé à partir de l'angle supérieur gauche, de gauche à droite, et de haut en bas, en prenant le nombre d'images nécessaire. Les diagrammes suivants illustrent la méthode.

ire
détails
es du
modifier
er une
filmage

es

errata
to

pelure,
on à

32X



Published by Harrison & Co. March 1770

CAPT. COOK.

THE obscure village of Marton, in Yorkshire, gave birth to this famous circumnavigator, October 27, 1728. His father was a common husbandman; and his education nothing more than reading, writing, and the first rules of arithmetick. At thirteen, he went apprentice to a shopkeeper; but, obtaining his discharge, bound himself for seven years to a Whitby vessel employed in the coal trade.

In 1755, when hostilities commenced with France, the dread of being pressed, induced him voluntarily to enter on board the *Eagle*, a sixty-gun ship, commanded by Sir Hugh Palliser; where his diligence and ability soon attracted the notice of this excellent officer: and, in 1759, Sir Hugh pronouncing him qualified, he was appointed master of the *Mercury*, and joined the fleet under Sir Charles Saunders, at the memorable siege of Quebec. On this occasion, though he had scarcely ever before used a pencil, he contrived, partly in the face of the enemy, to make a chart of the channel and soundings of the River St. Lawrence, which is esteemed so accurate, that no other has ever been published.

December 21, 1762, he married Miss Elizabeth Batts, of Barking, in Essex: and, from 1763 to 1767, was chiefly employed, by government, as marine surveyor of Newfoundland and Labradore; where he made such progress in science, that his ingenious Observation of an Eclipse of the Sun, at Newfoundland, August 5, 1766, communicated to the Royal Society, was printed in the *Philosophical Transactions*.

In July 1768, he sailed with Sir Joseph Banks and Dr. Solander, under the patronage of the king, to make observations, in a southern latitude, on the transit of Venus over the Sun, and to explore the Pacifick Ocean.

How ably he fulfilled this commission, is known to all the world: and such was his majesty's approbation, that in April 1772, he was engaged to make his second celebrated voyage, with Capt. Furneaux; for the particulars of which the *Narrative of his Voyages* must be resorted to.

The object of his third, and unfortunately his last voyage, was to determine the practicability of a northern passage to the Pacifick Ocean, accompanied by Capt. Clerke: when sufficient evidence appeared, to demonstrate that no such passage exists; and the western boundaries of the great continent of America were compleatly ascertained. On his return, however, in a sudden affray with the natives, at Owhyee, one of the Sandwich islands, Capt. Cook was killed, February 14, 1779. Thus perished, by the hand of a savage, this able man; whose vigorous mind, and undaunted resolution, had conducted him through innumerable enterprizes of the most imminent danger, and whose distinguished services can never cease to be remembered by a grateful and a generous nation.

