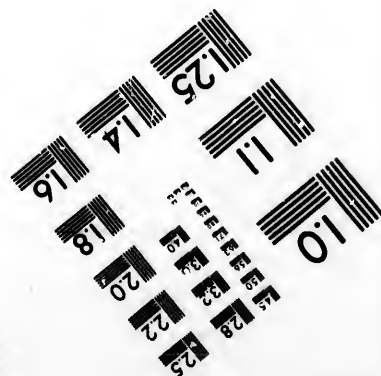
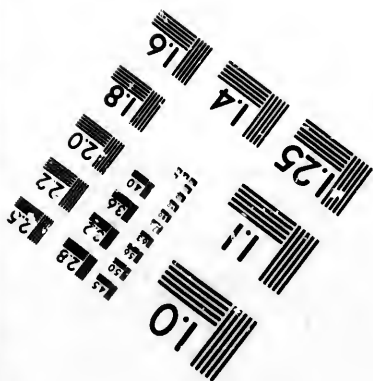
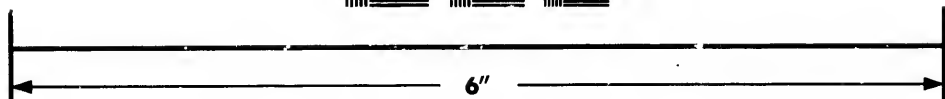
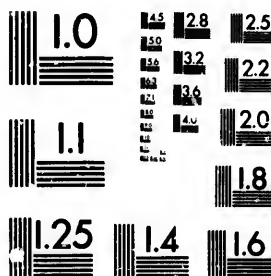


**IMAGE EVALUATION
TEST TARGET (MT-3)**



**Photographic
Sciences
Corporation**

23 WEST MAIN STREET
WEBSTER, N.Y. 14580
(716) 872-4503

**CIHM/ICMH
Microfiche
Series.**

**CIHM/ICMH
Collection de
microfiches.**



Canadian Institute for Historical Microreproductions / Institut canadien de microreproductions historiques

© 1981

Technical and Bibliographic Notes/Notes techniques et bibliographiques

The Institute has attempted to obtain the best original copy available for filming. Features of this copy which may be bibliographically unique, which may alter any of the images in the reproduction, or which may significantly change the usual method of filming, are checked below.

L'Institut a microfilmé le meilleur exemplaire qu'il lui a été possible de se procurer. Les détails de cet exemplaire qui sont peut-être uniques du point de vue bibliographique, qui peuvent modifier une image reproduite, ou qui peuvent exiger une modification dans la méthode normale de filmage sont indiqués ci-dessous.

- Coloured covers/
Couverture de couleur
- Covers damaged/
Couverture endommagée
- Covers restored and/or laminated/
Couverture restaurée et/ou pelliculée
- Cover title missing/
Le titre de couverture manque
- Coloured maps/
Cartes géographiques en couleur
- Coloured ink (i.e. other than blue or black)/
Encre de couleur (i.e. autre que bleue ou noire)
- Coloured plates and/or illustrations/
Planches et/ou illustrations en couleur
- Bound with other material/
Relié avec d'autres documents
- Tight binding may cause shadows or distortion
along interior margin/
La reliure serrée peut causer de l'ombre ou de la
distortion le long de la marge intérieure
- Blank leaves added during restoration may
appear within the text. Whenever possible, these
have been omitted from filming/
Il se peut que certaines pages blanches ajoutées
lors d'une restauration apparaissent dans le texte,
mais, lorsque cela était possible, ces pages n'ont
pas été filmées.
- Additional comments:/
Commentaires supplémentaires:

- Coloured pages/
Pages de couleur
- Pages damaged/
Pages endommagées
- Pages restored and/or laminated/
Pages restaurées et/ou pelliculées
- Pages discoloured, stained or foxed/
Pages décolorées, tachetées ou piquées
- Pages detached/
Pages détachés
- Show through/
Transparence
- Quality of print varies/
Qualité inégale de l'impression
- Includes supplementary material/
Comprend du matériel supplémentaire
- Only edition available/
Seule édition disponible
- Pages wholly or partially obscured by errata
slips, tissues, etc., have been refilmed to
ensure the best possible image/
Les pages totalement ou partiellement
obscurcies par un feuillet d'errata, une pelure,
etc., ont été filmées à nouveau de façon à
obtenir la meilleure image possible.

This item is filmed at the reduction ratio checked below/
Ce document est filmé au taux de réduction indiqué ci-dessous.

10X	12X	14X	16X	18X	20X	22X	24X	26X	28X	30X	32X
					✓						

The copy filmed here has been reproduced thanks to the generosity of:

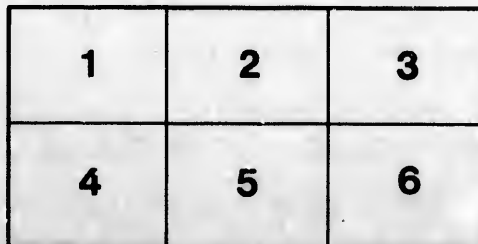
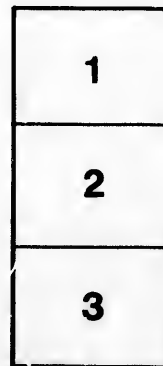
Library of the Public
Archives of Canada

The images appearing here are the best quality possible considering the condition and legibility of the original copy and in keeping with the filming contract specifications.

Original copies in printed paper covers are filmed beginning with the front cover and ending on the last page with a printed or illustrated impression, or the back cover when appropriate. All other original copies are filmed beginning on the first page with a printed or illustrated impression, and ending on the last page with a printed or illustrated impression.

The last recorded frame on each microfiche shall contain the symbol \rightarrow (meaning "CONTINUED"), or the symbol ∇ (meaning "END"), whichever applies.

Maps, plates, charts, etc., may be filmed at different reduction ratios. Those too large to be entirely included in one exposure are filmed beginning in the upper left hand corner, left to right and top to bottom, as many frames as required. The following diagrams illustrate the method:



L'exemplaire filmé fut reproduit grâce à la générosité de:

La bibliothèque des Archives
publiques du Canada

Les images suivantes ont été reproduites avec le plus grand soin, compte tenu de la condition et de la netteté de l'exemplaire filmé, et en conformité avec les conditions du contrat de filmage.

Les exemplaires originaux dont la couverture en papier est imprimée sont filmés en commençant par le premier plat et en terminant soit par la dernière page qui comporte une empreinte d'impression ou d'illustration, soit par le second plat, selon le cas. Tous les autres exemplaires originaux sont filmés en commençant par la première page qui comporte une empreinte d'impression ou d'illustration et en terminant par la dernière page qui comporte une telle empreinte.

Un des symboles suivants apparaîtra sur la dernière image de chaque microfiche, selon le cas: le symbole \rightarrow signifie "A SUIVRE", le symbole ∇ signifie "FIN".

Les cartes, planches, tableaux, etc., peuvent être filmés à des taux de réduction différents. Lorsque le document est trop grand pour être reproduit en un seul cliché, il est filmé à partir de l'angle supérieur gauche, de gauche à droite, et de haut en bas, en prenant le nombre d'images nécessaire. Les diagrammes suivants illustrent la méthode.

arrata
to

pelure,
n à





Information Cheerfully Given. Correspondence Solicited.



✧ RAND ✧ BROS. ✧

✧ ROYAL ✧

3

Agricultural and Industrial Society

OF BRITISH COLUMBIA.

EXHIBITION OF 1891

TO BE HELD AT

NEW WESTMINSTER, B. C.

Tuesday, Wednesday, Thursday and Friday

SEPTEMBER 22nd, 23rd, 24th and 25th.

Programme, Rules and Regulations.

NEW WESTMINSTER, B. C.

LEWIS & GREIG, PRINTERS, BOOKBINDERS AND ENGRAVERS.
1891.

Offices at NEW WESTMINSTER, B. C.
VANCOUVER, B. C.
and LONDON, ENG.

Information Cheerfully Given. Correspondence Solicited.

REAL ESTATE, FINANCIAL and INSURANCE AGENTS.

Cunningham Bros.

SPECIAL OFFER

DURING * EXHIBITION * WEEK.

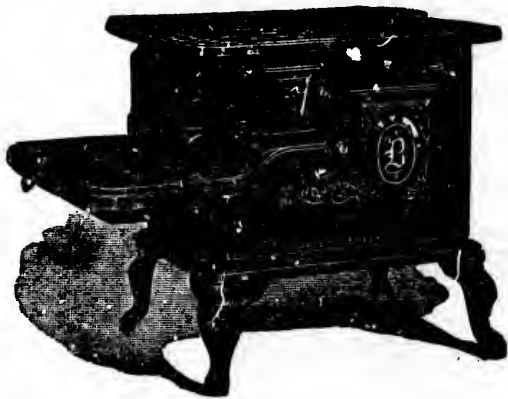
We offer to PAY FREIGHT on all Stoves sold by us.

We carry a full line of the famous

Chown & Cunningham Stoves and Ranges

which have given such great satisfaction throughout this Province and throughout the other Provinces of the Dominion wherever sold.

Look for our
FAMILY FAVORITE COOK STOVE



N. B.—We buy goods in carload lots, and can meet all competition prices.

IN HARDWARE, TINWARE, FARMERS' SUPPLIES,
PLOWS, PUMPS, IRON PIPE, GENERAL HOUSE
FURNISHING GOODS, &C.,

we carry a complete stock, and we will sell at
Specially Low Prices During Fair Week.

CUNNINGHAM : BROS.

A. B. MACKENZIE & CO.

General Commission Agents.

Real Estate

Insurance

Investment.

CALL AND SEE OUR LISTS OF

DESIRABLE PROPERTIES FOR SALE.

Money to Loan

607 COLUMBIA STREET,

NEW WESTMINSTER, B. C.

OGLE, CAMPBELL & FREEMAN,

THE LEADING

DRY GOODS

AND

House Furnishing

HOUSE.

611 Columbia Street,

NEW WESTMINSTER, B. C.



* ROYAL *
Agricultural and Industrial Society

OF BRITISH COLUMBIA

EXHIBITION · OF · 1891

TO BE HELD AT

NEW WESTMINSTER, B. C.

Tuesday, Wednesday, Thursday and Friday

SEPTEMBER 22, 23, 24 AND 25

PROGRAMME, RULES AND REGULATIONS

NEW WESTMINSTER, B. C.:
LEWIS & GREIG, PRINTERS, ENGRAVERS AND BOOKBINDERS
1891

→ 1891 ←

Royal Agricultural and Industrial Society of British Columbia

OFFICERS:

PRESIDENT.

G. W. CHADSEY, - - - - - SUMAS

VICE-PRESIDENTS.

T. J. TRAPP, - - - - - NEW WESTMINSTER
J. M. BROWNING, - - - - - VANCOUVER

SECRETARY.

THOMAS R. PEARSON, - - - - - NEW WESTMINSTER

TREASURER.

GEO. D. BRYMNER, - - - - - NEW WESTMINSTER

DIRECTORS.

H. F. PAGE, - - - Matsqui	GEORGE A. PERRIN, - Victoria
W. J. HARRIS, - Maple Ridge	G. W. HENRY, Port Hammond
W. H. LADNER, Ladner's Landing	C. G. MAJOR, New Westminster
E. HUTCHERSON, Ladner's Land'g	L. WILLIAMS, New Westminster
JOHN ARMSTRONG, - Mud Bay	J. B. KENNEDY, New Westminster
A. C. WELLS, - Chilliwack	T. SHANNON, - Clover Valley
W. TEMPLETON, - Vancouver	J. MAXWELL, - - - Langley
M. SINCLAIR, New Westminster	R. V. WINCH, - • Vancouver
P. LATHAM, - New Westminster	T. CUNNINGHAM, New Westm'r
H. WEBB, - Chilliwack	GEO. BLACK, - - - Hastings
J. M. FOSTER, - Lulu Island	J. C. McLAGAN, - Vancouver
S. TOLMIE, - - - Victoria	S. KNIGHT, - - - - - Sardis

COMMITTEES.

FINANCE.

T. J. TRAPP, M. SINCLAIR, C. G. MAJOR

HALL.

E. HUTCHERSON, J. B. KENNEDY, M. J. HENRY
P. LATHAM, R. V. WINCH, H. WEBB, W. J. HARRIS, S. KNIGHT

PRINTING.

THOS. R. PEARSON.

BAND.

J. REID, W. H. KEARY, E. S. SCULLAR

STOCK.

L. WILLIAMS, W. H. LADNER, H. F. PAGE, GEO. A. PERRIN

YARD.

T. J. TRAPP, E. A. WELLS, T. CUNNINGHAM, T. SHANNON

PRIZE LIST.

G. W. CHADSEY, T. R. PEARSON, P. LATHAM, T. CUNNINGHAM
H. F. PAGE, E. HUTCHERSON, M. SINCLAIR.

APPOINTMENT JUDGES.

T. J. TRAPP, GEO. A. PERKIN, E. HUTCHERSON, T. R. PEARSON
P. LATHAM, R. V. WINCH, W. TEMPLETON,
H. F. PAGE, L. WILLIAMS.

RESIDENCES TAKEN AT REASONABLE RATES.

RAND BROS.

CONSTITUTION.

ARTICLE I.—NAME.

SECTION 1. This Society shall be called the ROYAL AGRICULTURAL AND INDUSTRIAL SOCIETY OF BRITISH COLUMBIA.

ARTICLE II.—OBJECT.

SECTION 1. The purpose of this Society shall be to encourage the cultivation of the soil, and the general development of all the agricultural resources of the Province.

SECTION 2. To foster every branch of mechanical and household arts calculated to increase the happiness of home life.

SECTION 3. To extend and facilitate the various branches of mining and mining interests.

ARTICLE III.—MEMBERSHIP.

SECTION 1. Any person may become a member by the payment of an annual fee of three dollars, which shall also entitle members to compete for any prizes of the Society without any charge as entrance fees.

SECTION 2. The names of all members shall be registered in a book kept by the Secretary for that purpose.

SECTION 3. Any person may become a member for life by the payment of twenty-five dollars.

SECTION 4. Any person being a member of this Society shall be eligible to office, entitled to vote, receive a printed copy of the constitution, and such other matter as the Society shall publish, and have free admission to all exhibitions of the Society.

ARTICLE IV.—OFFICERS.

SECTION 1. The Officers and Directors of this Society shall consist of a President, two Vice-Presidents, Secretary, Treasurer, and twenty-five Directors, who shall constitute a Board of Managers.

INFORMATION CHEERFULLY FURNISHED.

RESIDENCES TAKEN AT REASONABLE RATES.

AGENTS FOR FIRE AND ACCIDENT INSURANCE COMPANIES.

FURNITURE and CARPETS

A Beautiful and Complete Line of the above can be bought from

P. PEEBLES

- ON -

DOUGLAS, OR, EIGHTH STREET

A few doors from Columbia Street.

N. B. — Special attention given to packing and shipping goods, etc.

H. H. LENNIE & Co.

† CITY †

Music * and * Fancy * Goods * Store

ALL KINDS OF PLAIN AND FANCY STATIONERY,
JAPANESE GOODS,
BERLIN WOOLS AND OTHER WOOLS.

— o —

THE CELEBRATED HEINTZMAN PIANOS and BELL ORGANS

— o —

. CALL AND EXAMINE OUR STOCK .
TERMS LIBERAL

NOTE.—Our stand is on Douglas Street, three doors from Columbia Street, New Westminster.

BRAY & MCINNIS

— DEALERS IN —

Choice Groceries and Provisions, Flour, Feed,

FRUIT AND CONFECTIONERY,

* TOBACCO AND CIGARS. *

Corner Columbia and Eighth Sts., nearly opposite C. P. R. Station,

NEW WESTMINSTER.

RAND BROS.

— 5 —

SECTION 2. The Officers and Directors shall hold office for one year and shall be elected by ballot at the Annual Meeting of the Society.

SECTION 3. Each candidate for election must have, at least, a majority of the votes cast.

SECTION 4. At any meeting of the Officers and Directors five shall constitute a quorum to transact business.

THE DUTIES OF PRESIDENT.

SECTION 5. The President shall preside at all meetings of the Society, and shall, at the request of five members of the Board of Managers, call special meetings; shall appoint all committees not otherwise ordered; shall vote only at the election of officers and in case of a tie; and shall sign all financial and official documents or papers emanating from the Secretary and not otherwise provided for; and shall have a general supervision of all matters pertaining to the interests of the Society.

In the absence of the President and Vice-Presidents the Society may choose a chairman, *viva voce*, unless voting by ballot be requested by two or more members.

DUTIES OF SECRETARY.

SECTION 6. The Secretary shall conduct the correspondence of the Society, keeping in a separate book copies of all letters in the name and on behalf of the Society, holding the same free to the inspection of any member of the Society at any regular meeting of the same.

He shall receive and file all letters addressed to the Society, holding the same subject to the Board of Managers.

He shall attend all meetings of the Society and the Board, keeping a full record of all the doings of each in a separate book, and shall, if required, furnish a copy of such proceedings for publication.

He shall prepare and publish all notices of meetings, prepare and sign all gratuitous or complimentary cards or tickets of admission, countersign all diplomas, certificates of merit, etc., awarded by the Society, and forward the same to their respective claimants.

He shall keep the seal and all plates, dies, engravings, etc., belonging to the Society, and shall cause to be struck

RESIDENCES TAKEN AT LOW RATES.

OFFICES AT NEW WESTMINSTER AND VANCOUVER, B. C., AND LONDON, ENGLAND.

AGENTS FOR COMMERCIAL UNION ASSURANCE COMPANY, OF LONDON.

FURNITURE

Largest Stock and Finest Assortment of all
Grades in Western Canada.

CARPETS.

Full Line of Wiltons, Brussels, Tapestry and others, in latest
designs, direct from John Crossley & Sons and
other renowned makers.

LINOLEUMS.

All Widths and Qualities, Direct from Best Scotch and English
Manufacturers.

Curtains, Portiers, Rugs,
Table Covers, Comforters,
Quilts, Blankets, Wall-paper:
Crockery, Glassware, Cutlery.
Lamps, Plated Ware,
House Furnishing Goods.

WHOLESALE AND RETAIL.

HOTELS and LARGE BUILDINGS FURNISHED THROUGHOUT
ON THE MOST LIBERAL TERMS.

Largest Showrooms. - Largest Stock.

Write for prices or call and see us.

WEILER BROS.

(Successors to John Weiler),

Showrooms, 50 to 55 Fort Street. }
Factory, Humbolt Street. }

Victoria, B. C.

NO TROUBLE TO SHOW PROPERTY. INFORMATION CHEERFULLY FURNISHED

RAND BROS., REAL ESTATE AGENTS.

- 7 -

therefrom such medals and impressions as may from time to time be required.

He shall have charge of all specimens, moulds, plates, seals, books, etc., arrange, prepare, or distribute the same under the direction of the Board.

He shall receive all moneys due or payable to the Society and pay the same over to the Treasurer, taking his receipt for the same; shall hold all bonds filed by the officers for the faithful performance of their duty, and all vouchers for every class of expenditure.

He shall countersign all drafts ordered by the Board of Managers or Finance Committee, and record the names of life and annual members in a book kept for that purpose in alphabetical order; and shall, at the annual meeting of each year, prepare a tabular statement of the receipts and expenditures of the Society, and place the same in the hands of the committee on printing, for publication or not as may be deemed best; and when required present the same to the Board of Managers.

He shall prepare all reports to be made by the Board to the Society, and perform such other duties as the Society or the Board of Managers may require, and for his services he shall receive such compensation as the Board shall decide to pay.

DUTIES OF TREASURER.

SECTION 7. The Treasurer shall receipt for all moneys received from the hands of the Secretary or any other person; shall disburse the same when audited and allowed by the Finance Committee or on an order from the Secretary.

But this provision shall not apply in the payment of premiums on the fair grounds, but he may there pay demands against the Society where satisfied of their justice.

He shall hold in trust all bonds, notes, deeds, or other evidence of debt or possession belonging to the Society, and shall transfer, invest or dispose of the same only by direction of the Society or by written order of the Board.

He shall, before entering upon the duties of his office, file with the Secretary a bond for the faithful performance of his duty, said bond to be approved by the Board.

He shall, at each annual meeting make the Board of Managers a detailed report of all his doings during the year, for

DEAL LARGELY IN TIMBER LIMITS AND MINES.

NO TROUBLE TO SHOW PROPERTY. INFORMATION CHEERFULLY FURNISHED.

HAVE CHOICE BARGAINS IN TOWN LOTS.

E

f all

atest

glish

Goods.

UGH CUT

Stock.

OS.

B. C.

BRACKMAN & KER

Manufacturers and Dealers in

FLOUR, BRAN, HAY, GRAIN

* MEALS, SPLIT PEAS, ETC. *

☞ Highest cash price paid for good milling oats. Correspondence solicited.

MILLS AT NORTH SAANICH

Office and Warehouse—Government St., Victoria, B. C.

T. B. PEARSON & CO.

Manufacturers of

CLOTHING

OVERALLS, SHIRTS, ETC.

Salesroom and Factory :

YATES ST., NEAR ORIENTAL HOTEL,
VICTORIA, B. C.

LUKE PITHER.

J. GOIGDARRIPR.

BOUCHERAT & CO.,

—Wholesale Dealers in—

Wines, Liquors, Spirits and Havana Cigars

Sole Agent for PRELLER CLARET, GREEN LABELS, SCHLITZ
MILWAUKEE BEERS and GOODERHAM & WORTS' RYE.

YATES STREET, - - - VICTORIA, B. C.

The Best Views of City and
Country on Sale.

Special Attention Given to High
Grade Stationery.

CENTRAL · BOOK · AND · STATIONERY · STORE

15 GOVERNMENT ST., VICTORIA, B. C.

Complete Stock of Albums, Dictionaries, Atlases,
Bibles and Prayer Books.

Special arrangements with Publishers to forward all the late novels as
published. Office and School Supplies. Prompt attention given
to all orders.

P. O. BOX 737

J. R. KERR.

LOTS ON THE TRAMWAY LINE FOR SALE BY RAND BROS.

LIVERPOOL LOTS FOR SALE BY RAND BROS.

— 9 —

which service he shall receive such compensation as the Board shall from time to time decide to pay.

ARTICLE V.—BOARD OF MANAGERS.

SECTION 1. The Board of Managers shall have the general management of the affairs of the Society in the interim of all annual meetings.

SECTION 2. They shall fill vacancies occurring between elections and make the necessary arrangements and preparations for all meetings, fairs, exhibitions, etc.

SECTION 3. The Board shall also have power to make its own By-Laws, (not inconsistent with the Constitution,) and arrange the time and place of holding its own meetings.

ARTICLE VI.—EXHIBITIONS.

SECTION 1. The Society shall hold an annual Fair and Cattle Show at such times and places as shall be agreed upon by the members of the Society at the annual meeting.

ARTICLE VII.—MEETINGS.

SECTION 1. The annual meeting for the election of officers shall be held on the exhibition ground during one of the days of the show; notice of time and place shall be given by the Board of Managers on the first day of the Show.

SECTION 2. No special meeting will be called by the Society but upon fourteen days notice, given and published in some newspaper in the Province, nor without a request signed by at least ten members.

SECTION 3. It shall not be admissible for any member to vote by proxy in any meeting of this Society, or at its Board of Managers.

SECTION 4. At any meeting of this Society ten members shall constitute a quorum.

ARTICLE VIII.—OFFICE AND ROOMS.

SECTION 1. The offices of this Society shall be located at the place where the fair is to be held.

ARTICLE IX.—AMENDMENTS.

Amendments must be presented in writing at an annual meeting, when, if agreed to by three-fourths of the members present, shall be adopted.

VANCOUVER LOTS FOR SALE BY RAND BROS.

LOTS ON THE TRAMWAY LINE FOR SALE BY RAND BROS.

NEW WESTMINSTER LOTS FOR SALE BY RAND BROS.

AIN

ndence

, B. C.

CO.

G

TEL,

DARRIPR.

D.,

igars

HLITZ
VE.

B. C.

to High

TORRE

lasses,

ovels as
iven

R.

McLean & Morrison

— IMPORTERS OF —

Groceries, Provisions

Etc., Etc.

EVERY LINE A SPECIALTY

TEAS, SUGARS,

SYRUPS AND MOLASSES,

CROCKERY AND GLASSWARE.

SUNDRIES OF EVERY DESCRIPTION

704 Columbia Street,

New Westminster.

GENERAL RULES AND REGULATIONS.

APPROVED AND ADOPTED AT A MEETING OF THE BOARD OF DIRECTORS, HELD 3RD FEBRUARY, 1891.

INFORMATION FOR EXHIBITORS.

Exhibitors will please read the following rules carefully and send in their entries as early as possible, and be sure that all fees accompany the same.

On Monday and Tuesday, the 21st and 22nd of September, the grounds and buildings will be open to exhibitors and their assistants from 9 a. m. to 10 p. m. These are preparation days and all exhibits required to be on the grounds the full term of the exhibition must be in place and ready for exhibition by 12 p. m. on Tuesday, 22nd September.

The exhibition will be open to the public on Wednesday, the 23rd September, at 2 o'clock p.m., and will continue open on Thursday and Friday from 9 a.m. to 6 p. m. The exhibition will be considered officially closed at 6 p. m. on Friday, the 25th September, after which exhibitors may move all their property from the grounds and buildings. No removals will, under any circumstances, be allowed before 4 p. m., for stock and 6 p. m. for other articles.

Necessary attendants upon stock and machinery will be furnished with special passes on applying at the Secretary's office on the grounds. These passes will bear the name of the person to whom they are issued, and if presented by any other person will be forfeited.

Any more than one attendant's ticket will not be issued to any exhibitor except in the case of live stock or machinery, which may require extra attendants. As these tickets are positively not transferable under any circumstances, exhibitors who may desire to change their attendants must have their tickets exchanged at the office. The names of all attendants must be written on the tickets, and no ticket will be accepted at the gates unless the name of such attendant has been written thereon in ink.

BEST BARGAINS ON THE MARKET.

HAVE CHOICE ACREAGE ON TRAMWAY BETWEEN WESTMINSTER AND VANCOUVER.

BUY AN ACRE OR TWO. SURE TO GIVE FINE RETURNS.

Entirely New Stock.

* H. MOREY & CO. *

+ PRINTERS +

Booksellers • and • Stationers

—AND DEALERS IN—

MUSICAL INSTRUMENTS,

FANCY GOODS,

TOYS, NOTIONS, &C.

—AGENTS FOR THE—

FAMOUS UXBRIDGE ORGANS

Unexcelled in Quality of Tone and Durability of Workmanship.

Best Value in Violins on the Mainland.

780 Columbia St., Near C. P. R. Depot.

H. MOREY & CO.

BUY LOTS IN NEW WESTMINSTER.

— 13 —

The entry tickets upon animals or articles will admit the person bringing them to the show ground for exhibition, when accompanying such articles or animals on their first entering, without the use of any other ticket; but afterwards such persons must be provided with the regular pass as above or he will have to pay the regular admission fee.

Judges and members of the press will be furnished with badges, this being intended only as a means of showing their official connection with the exhibition, and not for the purpose of securing admission to the grounds.

ENTRIES.

All entries must be made on the printed forms accompanying the Prize List. These forms are to be filled up and signed by the exhibitor, and sent to the Secretary of the Association at New Westminster, on or before the following date, viz :—Tuesday, September the 8th, 1891.

Members of the Society are entitled to free entries and admission to the grounds.

The price of membership ticket is \$3.00, and may be obtained on application to the Secretary.

The entrance fee must in all cases, except those of members, be forwarded with the entry. No entry will be accepted unless this is done. Fees should be sent by money order or in bills in registered letter. Postage stamps are not desirable.

Articles of work or specimens which have been awarded prizes at any previous exhibition of this Association cannot be entered in competition for the prizes named in the prize list for this year.

Exhibitors will please take notice that it is absolutely required that the entries be made on or before the dates mentioned, in order to afford sufficient time to examine the entry papers, to forward the entry tickets and to correspond with parties when necessary, and for the correction of errors and omissions.

RAND BROS., REAL ESTATE AGENTS.

IF YOU WANT TO BUY OR SELL COMMUNICATE WITH THEM.

THE MOST SOLID AND PROGRESSIVE CITY ON THE COAST.

k.

*

ers

&C.

NS

hip.

d.

B. C. MONUMENTAL WORKS

COLUMBIA STREET, NEW WESTMINSTER.

The Leading Marble and Granite Works in British Columbia.

THE ONLY Place in the Province where a stock of SCOTCH, SWEDISH AND CANADIAN GRANITE MONUMENTS is to be found, also carries the Largest Assortment of American and Italian Marble Headstones, Tablets, &c.

Advertises nothing but what is actually to be seen on the premises. All work, whether Marble or Granite, furnished with bases in Native Granite. NO SANDSTONE USED.

ALEX. HAMILTON, P. O. Box 135.

Port Hammond Nurseries.

Headquarters for HOME GROWN Fruit Trees and All Kinds of Nursery Stock.

SEND FOR DESCRIPTIVE CATALOGUE.

80 pages filled with Valuable Information for Fruit Growers.

CAN SUPPLY EASTERN TREES OF FIRST-CLASS QUALITY IF DESIRED.

☞ *Send in Orders Early.*

☞ *We Guarantee Satisfaction.*

G. W. HENRY, Prop'r, Port Hammond, B. C.

N. B.—On hand, a large assortment of Fruit Baskets, different styles, also Bushel Baskets for Farmers.

BAKER'S BAKERY.

The Leading Bread and Cake Establishmen in the City.

All Kinds of Fresh and Fancy Bread, Pastry, and Confectionery
Constantly on hand.

WEDDING CAKES A SPECIALTY.

All orders promptly attended to. A delivery cart in connection with the business.

513 Columbia St., Two Doors East of City Hotel, New Westminister.

RAND BROS.

— 15 —

In the Horses, Cattle, Sheep, Pig and Poultry Classes, the entry must in every instance be made in the name of the bona-fide owner, and unless this rule be observed, no premium will be awarded, or if awarded, will be withheld. If any person shall exhibit any animal or bird, of which he is not the bona-fide owner, he will forfeit any premium which may be awarded him.

In all the other classes entries must be made in the names of the producers or manufacturers only, and by such producers themselves in person or their agents, who must have special authority for doing so, and shall produce the authority in writing if so required by the Judges. Those who are not manufacturers or authorized agents may exhibit, but cannot compete for the prizes offered. If any person, other than the authorized agent shall enter an article for competition, as produced or manufactured by himself, when it has not really been so, he shall forfeit any premium which may be awarded the article.

A merchant who sells a line of goods which are also sold by other merchants cannot be considered as the agent for such goods.

No person will be allowed to enter for competition more than one specimen in any one class of a Division, unless the additional article be of a distinct named variety or pattern from the first. This rule not to apply to animals, but to all kinds of grain, vegetable produce, fruit, manufactured articles, &c., to which each additional specimen would necessarily be precisely similar to the first.

EXTRA ENTRIES.

Every article must be entered under some one of the headings in the regular list when possible, but if any article is of a distinct character from anything specified in the list, it may be entered in the class with which it most nearly corresponds.

On the entry of each animal or article a card will be furnished the exhibitor specifying the class, the Division, the number of the entry, and the name of the exhibitor and residence, which card must remain attached to the animal or article during the exhibition.

In all cases the right is reserved to reject entirely or accept conditionally any entry or application, and under no circumstances will articles which are offensive by reason of their

RESIDENCES TAKEN AT LOW RATES,

OFFICES AT NEW WESTMINSTER AND VANCOUVER, B. C., AND LONDON, ENGLAND.

AGENTS OF COMMERCIAL UNION ASSURANCE COMPANY, OF LONDON.

QUEEN'S MARKET.

GOVERNMENT STREET,



VICTORIA, B. C.

LAWRENCE GOODACRE,

Wholesale and Retail Butcher.

Contractor by appointment to Her Majesty's Royal Navy, the Dominion Government, Etc., Etc.

SHIPPING SUPPLIED AT LOWEST RATES.

→ GO TO ←

CHEAPSIDE

— FOR —

EVERYTHING AND ANYTHING.

→ STEMLER & EARLE ←

Pioneer Steam Coffee & Spice Mills

Removed to their New Factory, Pembroke St., between
Government and Douglas, VICTORIA, B.C.

Manufacturers of COFFEES, SPICES,
MUSTARD and BAKING POWDER.

British Columbia Iron Works.

JOHN ROBERTSON,

Blacksmith and Boiler Maker,

Store Street, Opposite Telegraph Hotel, VICTORIA. B.C.

STEAMBOAT AND SHIPS' WORK,

Agricultural Implements, Miners' Picks, &c., Made and Repaired.

RAND BROS.

— 17 —

odour or appearance, or which are dangerous by reason of thire explosive character, be admitted; and if any such be introduced by an exhibitor through misapprehension or otherwise, they may be removed by order of the Board of Directors.

Exhibitors shall, if required by the Directors, make a statutory declaration that the articles exhibited by them are exhibited in accordance with the rules and regulations of the Association; and in case any exhibitor refuse to make such declaration on being requested, all premiums awarded him, her or them, shall be forfeited.

ENTRANCE FEES.

For cattle, sheep, horses and pigs on amount of prizes, 15 per cent.	
For silver medal.....	2 50
Agricultural implements.....	1 00
Field produce.....	50
Dairy produce.....	50
Fruits.....	25
Vegetables.....	25
Entrance Band Contest.....	15 per cent.
Special and Sweepstakes.....	20 "

All other entries 50 cents, except for ladies and misses, 25 cents.

THERE ARE NO CHARGES FOR SPACE,

Except in special cases where extra advantages, for advertising purposes, have been applied for.

APPLICATIONS FOR SPACE.

For the exhibit of all classes of manufactures, applications for space should be made to the Secretary as early as possible. Space will be allotted according to order of application, up to 12 a.m. Monday, 21st, after which date it will be allotted according to the extent previously undisposed of.

PREPARATORY WORK.

On and after 15th September, exhibitors, their agents and workmen, will be admitted to the grounds and buildings for the purpose of making preparatory structures, or getting machinery and implements into position. These structures must be completed by 6 p.m. Monday, the 21st.

DELIVERY OF LIVE STOCK AND ARTICLES AT GROUNDS.

All exhibits must be delivered on the grounds and placed in position by 12 p.m. on Tuesday. Animals will be received up to 8 a.m., Wednesday morning.

RESIDENCES TAKEN AT LOW RATES.

LOTS ON THE TRAMWAY LINE FOR SALE BY RAND BROS.

NEW WESTMINSTER LOTS FOR SALE BY RAND BROS.

To the Farmers

© AND OTHERS ©

*Don't Forget, when in New Westminster, to Call
and Examine the Fine Stock of*

FURNITURE

— AT —

GORDON · & · RAAB'S

Corner Columbia and Blackie Streets

Opposite C. P. R. Station.

∴ 1153 POUNDS 15 $\frac{3}{4}$ OUNCES ∴

— OF —

Well Worked and Salted Butter

MADE BY A

Holstein-Friesian Cow in One Year,

Also 30,000 pounds of milk, given by a cow of this breed in same time,
also 260 pounds gained in weight in 47 days by a calf of this
breed. Many have weighed 1,200 pounds when one
year old. The subscriber offers for sale

YOUNG STOCK, OF BOTH SEXES,

Sired by Clothilde 2nd, Artis, whose dam, Clothilde 2nd, gave when
four years old, 23,602 pounds of milk in one year, and made 320
pounds of butter in 90 days.

PERCHERON HORSES

From best families in France, (Imported Direct.) Young stock for
sale. Stallion for service. Stock all registered.

PRICES REASONABLE.

HUBERT F. PAGE, - Matsqui, B. C.

RAND BROS.

- 19 -

SPECIAL NOTICE.

As it is fully intended to have the exhibition opened to the public at the time named, exhibitors are specially notified that articles or animals arriving after the above dates will not be allowed to compete. Exhibitors of machinery and other heavy articles are expected to have them on the grounds and placed in position the day preceding the opening of the Exhibition.

All boxes, wrappings and other packing material must be cleared away and everything be in proper order, before 12 p. m. on Tuesday, 22nd September.

Exhibitors must see to it that their articles are properly unpacked and delivered to the superintendent of the department to which they belong, or his authorized agent. Exhibitors must provide for the delivery of their articles upon the Exhibition grounds. The Association cannot, in any case, make provision for their transportation or be subject to any expense therefor, either on their delivery at, or return from, the grounds. All expenses connected therewith must be provided for by the exhibitors, and all express and cartage charges must have been prepaid.

Articles not accompanied by their owners may be addressed to the Secretary, who will receive them on their being delivered on the grounds, if all cartage and other charges on the same have been prepaid.

Exhibitors on arriving with their articles, will apply at the office of the Secretary, when they will be informed where the articles are to be placed.

Exhibitors will at all times give the necessary personal attention to whatever they have on exhibition, and at the close take entire charge of the same.

Exhibitors of animals, machinery in motion, and other exhibits liable to occasion accidents, injury or damage to persons coming in contact with them, shall guard their exhibits and protect the public from coming in contact therewith, and every such exhibitor shall indemnify the Association from and against all claims and demands, costs, charges and expense which it may incur, suffer or be put to by reason of any accident, or of any person being injured or suffering damage through, or by reason of any such exhibit not being properly guarded, or the public not being properly protected therefrom.

INFORMATION CHEERFULLY FURNISHED.

AGENTS FOR FIRE AND ACCIDENT INSURANCE COMPANIES.

RESIDENCES TAKEN AT REASONABLE RATES.

THE ROYAL INCUBATOR



Simple, Perfect and Reliable

HATCHES

All kinds of Eggs. We also manufacture BROODERS' and BEE KEEPERS' SUPPLIES, HIVES, SMOKERS, SECTIONS, FOUNDATIONS, etc., and breed the

Finest Strains of Standard Fowls

ITALIAN BEES AND QUEENS

The Largest Poultry and Bee Ranch in British Columbia. FREE CIRCULARS.

State what you want and address

J. S. SMITH, - - Chilliwack, B. C.

F. M. O'BRIEN,
Business Manager.

JAMES F. NEILSON,
Mechanical Supt.

© WESTMINSTER © FOUNDRY AND MACHINE WORKS

G. W. LOCCIE, Proprietor

Manufacturer of all kinds of

MINING, SAW MILL, STEAMBOAT AND CANNING MACHINERY

SPECIALTIES:

Marine and Stationary Engines, Boilers, Brass and Iron Castings, Babbit Metal, Canning Dies, House Crestings, etc.

OFFICE AND WORKS:

319 and 321 FRONT STREET, - - NEW WESTMINSTER, B. C.

HAVE CHOICE BARGAINS IN TOWN LOTS.

RAND BROS., REAL ESTATE AGENTS.

— 21 —

Articles placed on exhibition must not be removed until the close.

Every facility will be afforded for the transaction of business by taking orders, but no delivery of articles sold can be made on the premises during the Exhibition.

The Association will take reasonable precaution to ensure the safety of articles sent to the Exhibition, but the owners themselves must take the risk of exhibiting them, and should any article be accidentally injured, lost or stolen, the Association will give all the assistance in their power towards the recovery of the same, but will not make any payment for the value thereof.

At the close of the Exhibition exhibitors must remove their exhibits as early as possible. Any article or stand left in the buildings or grounds after this time will be at the risk of the owner.

LIVE STOCK.

All stall doors must be left open, so that visitors can inspect the live stock, between the hours of 9 a. m. and 4 p.m., and at such other times as the officers may find it desirable.

Exhibitors of thoroughbred stock must hand in the pedigrees to the Judges when examining the stock.

Good buildings are provided upon the grounds for live stock. Bedding and water will be furnished for horses, cattle, sheep, and pigs, without charge from the opening till the close of the Exhibition, so that the stock may be taken to the grounds immediately on their arrival. Hay and grain for horses, cattle, sheep and pigs, will be for sale on the grounds at lowest prices. Exhibitors will please report at once if unreasonable prices are exacted.

The production of any animals in the horse ring may be ordered by either of the Committees on Live Stock, for review or other purposes, at any time during the Exhibition; and any attendant or exhibitor refusing to bring such animal into the ring when so required, shall forfeit his entry fees and any premiums which have been awarded him.

MEDALS.

Medals will be awarded in lieu of money prizes when desired by exhibitors, subject to the approval of the Board of Directors. The value of medals are as follows: Gold medal, \$40; Silver medal, \$15; Bronze medal, \$7.50.

DEAL LARGELY IN TIMBER LIMITS AND MINES.

HAVE CHOICE BARGAINS IN TOWN LOTS.

NO TROUBLE TO SHOW PROPERTY. INFORMATION CHEERFULLY FURNISHED.

OR
liable

also
' and
LIES,
SEC-
, etc.,

Fowls

ENS

y and
olum-
S.

. C.

Supt.

KS

NERV

grass

g

B. C.

HERBERT G. ROSS,
Notary Public.

P. O. Box 272. * Telephone 140.

REGINALD C. BLAKER,
Auctioneer.

H. G. ROSS & CO.

COLUMBIA STREET, NEW WESTMINSTER, B. C.

Real Estate, Insurance and Financial Agents

Shipping and Commission Merchants

AGENTS FOR

London and Provincial Marine Insurance Company,

Canada Life Assurance Company,

City of London Fire Insurance Company,

Royal Canadian Insurance Company,

Quebec Fire Assurance Company:

☞ Policies written without reference to home offices. ☞

* City and District Property and Timber Limits at Lowest Prices. *

Cable Address: "ROSS"—A. B. C. Code.

D. J. MACDONALD

Clothing

GENTS' FURNISHINGS, HATS, CAPS

.....ETC.....

POWELL BLOCK, COLUMBIA ST.

NEW WESTMINSTER, B. C.

RAND BROS.

— 23 —

RAILWAYS AND STEAMBOATS.

Favorable arrangements will be made with all the Railway and Steamboat Companies for the conveyance of passengers and articles to and from the Exhibition at greatly reduced rates.

Live stock and all other exhibits sent as freight (not by express) will be returned free, on the freight having been prepaid one way, that is, to New Westminster.

All articles sent by express will be delivered on the grounds without extra charges by the Express Companies.

PAYMENT OF PRIZES.

The Treasurer will be prepared to commence paying the premiums at his office on the grounds, for all classes of exhibits, on Saturday at 10 a. m.

Parties who may have prizes awarded to them are particularly requested to apply for them before leaving New Westminster, or leave a written order with some person to receive them, stating the articles for which prizes are claimed.

In case there should not be sufficient funds to pay the prize list in full, prizes will be paid pro rata.

Persons entitled to premiums must apply for them at the Secretary's office, who will give orders on the Treasurer for the amount. These orders must be endorsed, as they will be payable to order, not to bearer, and on presentation to the Treasurer properly endorsed, will be paid either in cash or by cheque on the bank.

Orders for premiums not applied for as above will be given by the Secretary, and the amount forwarded by the Treasurer, after the close of the Exhibition, to the address given on the entry forms.

All persons to whom a prize is awarded, and who do not receive the same as above, must apply to the Secretary of the Association for the payment thereof, in writing, on or before the 31st October, in the year in which such prize is awarded, or such prize will be forfeited.

JUDGES AND JUDGING.

The Judges will be appointed by the Board of Directors previous to the Exhibition, and will receive a circular informing them of the fact, and when to report at the office on the grounds.

RESIDENCES TAKEN AT LOW RATES.

OFFICES AT NEW WESTMINSTER AND VANCOUVER, B. C., AND LONDON, ENGLAND.

AGENTS FOR COMMERCIAL UNION ASSURANCE COMPANY, OF LONDON.

Mainland Nursery

1891

THIRTY THOUSAND

Fruit - and - Ornamental - Trees

SMALL, FRUITS, SHRUBS AND PLANTS,

HOME GROWN FOR SALE. HOME GROWN

Apples in all their Varieties

A LARGE ASSORTMENT OF

※ PEARS ※

TWO AND THREE YEARS OLD.

Cherries, Plums, Peaches, Apricots, Gooseberries (Downing and Oregon Seedling), Fay's Prolific Red Currants, White and black Currants, Red and Black Raspberries, Blackberries, etc.

ORNAMENTAL TREES FOR WIND-BREAKS

NORWAY SPRUCE,

WHITE THORNS FOR HEDGES.

☞ Come and inspect the Stock.

E. HUTCHERSON,

Ladner's Landing, B. C.

RAND BROS., REAL ESTATE AGENTS.

-- 25 --

No person will be allowed to act as a Judge who is in any way interested in the articles to be examined.

It is particularly requested that the Judges will not enter into argument with exhibitors as to the merits of their exhibits.

It is desired that all Judges of each class go together to hand in their report, instead of sending it by one of their number, and to remain together until their book has been examined by the Secretary or his assistants, in order that cases of error or doubt may be more easily and promptly made right.

Judges will please sign and hand in their awards to the Secretary or his assistant as soon as possible, and make their more extended reports afterwards, making such recommendation as circumstances or their experience may suggest.

The Judges are particularly requested not to leave the grounds until they have ascertained from the Secretary that there are no protests against the awards in the class that they have judged.

In the absence of competition in any section, or if the stock or articles be of inferior quality, the Judges will award only such premiums as they think the articles deserving of. They will exercise their discretion as to whether they will award the first, second, or any premium.

It does not follow that because a prize is offered for any particular animal or article that it must be awarded, unless there is a proper competition, or unless the exhibit is really of sufficient merit to warrant the award being made. THE JUDGES ARE PARTICULARLY REQUESTED TO NOTE THIS FACT.

In addition to the stated premiums offered for animals or articles in the list, the Judges may also distinguish such animals or articles as they consider deserving of notice, but which have not received prizes, by tickets with the words "Highly Commended" upon them. These tickets will not entitle the holder to any money payment.

In awarding prizes for breeding cattle, sheep or pigs, Judges are especially instructed not to take into consideration their present value to the butcher, but to decide according to their relative merits for the purpose of breeding.

The ages of all live stock will be computed from the 1st of January of the year of birth.

BEST BAKGANS ON THE MARKET.

HAVE CHOICE ACREAGE ON TRAMWAY BETWEEN WESTMINSTER AND VANCOUVER.

BUY AN ACRE OR TWO. SURE TO GIVE FINE RETURNS.

Exhibition * Notice

✻ GLOBE HOUSE ✻

MRS. WM. RAE

DIRECT IMPORTER OF

STAPLE AND FANCY DRY GOODS

MILLINERY AND MANTLES

— AND —

GENTS' * FURNISHINGS

WE ARE NOW SHOWING the Latest Novelties in Ladies' Trimmed and Un-trimmed Hats and Bonnets, Flowers, Feathers, Agretts, and all the Newest Gauzes and Millinery Trimmings, Children's Plush, Muslin and Lace Hats and Bonnets, Ladies' Silk Dolmans, Jetted and Lace Visites, Jackets, Capes, Shower-proof Cloaks, White and Colored Blouses and Aprons, Parasols, Hosiery, Gloves, and the Largest Stock of Plain and Fancy Silk and Velvet Ribbons in the city; also the Newest Shades in Dress Goods, Costumes, Satteens, Prints, Muslins, Delaines, Grenadines, Flanneletts, and Ladies' and Children's Underclothing in Great Variety.

☞ Visitors would save both time and money by calling at the GLOBE HOUSE, as there is such a large and well assorted stock to select from.

No Trouble to Show Goods

Remember the address—

GLOBE HOUSE,

Columbia Street, opposite Hotel Douglas, New Westminster, B. C.

BUY LOTS IN NEW WESTMINSTER.

— 27 —

In judging blooded stock, regard will be had to the purity of breed established by pedigree, size, form, action and general characteristics of the various breeds, making proper allowance for age.

No animal will be allowed to enter or compete in more than one class, or section, except for the Medal for the best of any age in its class, and in Special Prizes and Herds.

Horses must be shown uncovered, and in such a manner as Judges may require or allow, and if exhibitors refuse to submit to the proper requirements of the Judges, their animals will be ruled out, but exhibitors will have the privilege of showing their animals in harness, to bridle or under saddle as they may prefer.

All animals competing for prizes must be brought out for the inspection of the Judges or for exhibition whenever called out by the official appointed to attend to that duty.

Exhibitors who desire to take their animals home at night will be allowed to do so on depositing \$5.00 with the Secretary as a guarantee for the return of the animal next morning. If the animal is not returned by 9 o'clock next morning, the amount deposited will be forfeited to the Association.

No award of a prize not offered in the list will be paid until sanctioned by the Board of Directors of the Association.

Each award must be written in a plain, careful manner, on the blank page opposite the number of the entry, with the name of the exhibitor.

Exhibitors can ascertain from the superintendents of the several departments when the Judges may be expected to examine their animals or articles. No complaint or appeal based upon the statement that the Judges have overlooked animals or articles will therefore be considered by the Directors.

Any exhibitor lodging a protest must make it in writing, and it must be delivered to the Secretary or his assistant within three hours of the cause of protest; it must state plainly the cause of complaint or appeal and must be accompanied by a deposit of \$2.00, which sum shall be forfeited to the Association if the said protest is not sustained. The Board of Directors, however, earnestly hope that exhibitors will not enter protests without the strongest grounds for so doing, as much unpleasantness and annoyance is often occasioned by protests of a frivolous nature.

RAND BROS., REAL ESTATE AGENTS.

IF YOU WANT TO BUY OR SELL COMMUNICATE WITH THEM.

THE MOST SOLID AND PROGRESSIVE CITY ON THE COAST.

* **DO NOT FAIL TO CALL ON** *
CORBETT & CLIFF

Carnarvon Street, New Westminster, B. C.

(Opposite Herring's Opera House.)

We are **SOLE AGENTS** for McCleary's Celebrated

"FAMOUS" Stoves, Ranges and Heaters

They are the Best in the Market.

We have constantly on hand a large and varied assortment of

Specially Heavy Tinware of Our Own Manufacture

WE CARRY THE

Gould Manufacturing Company's Pumps

..... **ALL KINDS**

**Baths in Copper and Zinc, Closets,
Children's Baths, Sinks,
Foot Baths, Boilers,
Hip Baths, Kettles, etc.**

SPECIAL inducements offered to buyers during Fair Week. Be sure to see us. We can supply anything you want..

TELEPHONE 153.

P. O. BOX 16.

RAND BROS.

— 20 —

The Judges are expected, in the execution of their duties, to be careful to act with the most rigid impartiality, and make their entries in a clear and conspicuous manner; in all cases of doubt or difficulty referring freely to the Secretary or to the Committee of the Association in charge of the department.

No animal or article exhibited shall have about it any prize colors or cards until the awards have been made in their respective classes.

No person shall be permitted in the horse or cattle rings during the time of judging except the Judges, the grooms, or persons in charge of the animals, and members of the press.

All prize cards which have been affixed by the Judges must be displayed during the Exhibition. Any infraction of this rule will incur the forfeiture of any premium awarded.

Any person who shall attempt to interfere with or influence the Judges while in the discharge of their duties, or who shall at any time, on the premises of the Association, use any contemptuous or abusive language to any Judge in consequence of any award made by him, shall forfeit his right to any premiums to which he might otherwise be entitled, and shall be excluded from exhibiting for one year thereafter. Judges are particularly requested to immediately report any breach of this rule.

Upon the discovery of any fraud, deception or dishonest practice, either in the preparation, ownership, or of any representation concerning any animal or article exhibited, which may have affected, or have been intended to affect, the decision of the Judges, the Board of Directors have power to withhold the payment of any prize awarded, and may prohibit any such party or parties from exhibiting for one or more years, and may also publish the names of such parties, or not, as may be deemed most expedient.

MISCELLANEOUS.

If any persons, through ignorance of the regulations, shall bring things to the Exhibition without having entered them at the proper time, the same may, in the discretion of the Superintendent in charge of the several departments, be allowed to be brought upon the grounds, and so placed that they may be examined by the public, but shall not be classi-

RESIDENCES TAKEN AT LOW RATES.

OFFICES AT NEW WESTMINSTER AND VANCOUVER, B. C., AND LONDON, ENGLAND.

AGENTS OF COMMERCIAL UNION ASSURANCE COMPANY, OF LONDON.

T. J. TRAPP
AUCTIONEER

GENERAL

- AND -

Real • Estate • Agent

CITY AND SUBURBAN PROPERTY AND
FARMING LANDS OF ALL
DESCRIPTIONS

COLUMBIA ST., NEW WESTMINSTER, B. C.

HEAD OFFICE OF THE

Liverpool Land and Improvement Co.



— FOR —

H · A · R · D · W · A · R · E

Paints, Oils, Varnishes, Brushes, etc.

GO DIRECT TO

T. J. TRAPP & CO.

☞ WE CAN SAVE YOU 25 PER CENT.

☞ CONTRACTORS' SUPPLIES A SPECIALTY.

RAND BROS.

— 31 —

fied, nor shall any official examination of them be made or premiums awarded.

Where space has been awarded to any exhibitor, the Board of Directors reserve the right, in case any exhibitor shall fail to make or maintain a creditable display, to declare the space allotted to him, or any portion thereof, forfeited. Exhibitors must arrange their exhibits in as neat and attractive a manner as possible, and neatly fit up the space allotted to them, in default of which the Directors may cancel their entries and require the removal of the goods.

Instructions have been given by the Directors that no bills will be recognized by the Society unless incurred by order of the Secretary. The parties will please pay particular attention to this fact.

The Board of Directors reserve the right to prescribe the dimensions and regulate the position of all signs, and generally to direct the management of articles on exhibition, so far as the same may be necessary to secure harmony and an attractive appearance. Exhibitors will not be allowed to distribute about the grounds or buildings hand-bills or other advertisements that may cause a nuisance. Neat cards for that purpose are recommended, as they are more likely to be kept by visitors and not thrown on the ground.

No exhibitor or attendant will be allowed to make unseemly noises, that may be considered a nuisance, in calling the attention of visitors to his exhibits; and any exhibitor or attendant that may be guilty of distributing any advertising cards or other notices that may be considered immoral or objectionable by the Board of Directors, shall forfeit his space and all other privileges, and shall be removed from the Exhibition grounds.

The parties supplying refreshments at the restaurants must lay in their supply before 8 o'clock a. m. each day, unless under special unavoidable circumstances, when permission must be obtained from the Secretary.

If any person wilfully injures or destroys any property within the Exhibition grounds of the Association, or hinders or obstructs the officers or servants of the Association, or any policeman or constable duly appointed, in the execution of his duty, or gains admission to the grounds contrary to the rules of the Association, he shall be prosecuted according to law.

INFORMATION CHEERFULLY FURNISHED.

RESIDENCES TAKEN AT REASONABLE RATES.

AGENTS FOR FIRE AND ACCIDENT INSURANCE COMPANIES.

* SHIRLEY & HOY *

DEALERS IN

Stoves, Tinware

— AND —

HOUSE FURNISHINGS

PLUMBING AND GAS FITTING

☞ A Full Stock of the Celebrated COPP and JAS. SMART

STOVES and RANGES

WE beg to tender our thanks to the general public for the very liberal patronage that they have extended to us during the short time we have been in business, and hope that by continuing to carry out our motto of "A Fair Profit for a Good Article," we shall always be found worthy of the support and patronage of the public.



MARY STREET

Just above Postoffice,

New Westminster, B. C.

OFFICES AT NEW WESTMINSTER AND VANCOUVER, B. C., AND LONDON, ENGLAND.

RAND BROS.

— 33 —

The officers of the Association have the power to enforce these rules and to prohibit and prevent all kinds of gambling; to regulate or prevent the huckstering or trafficking in fruits, goods, wares or merchandise on the Exhibition grounds; and any person who, after due notice of such rules, violates the same, shall be liable to be removed by the officers, policemen, or constables of the said Association, and be subject to the penalties.

FIRE AND POLICE PROTECTION.

The most careful and thorough arrangements possible have been made to guard against fire. A telephone attachment will be had with the fire hall; and with the precaution taken of having watchmen on during the whole night, the danger of the occurrence of fire is very remote; but exhibitors desiring insurance must give it their personal attention.

An ample police force, detailed for the purpose by the city, will be on duty night and day during the continuance of the Exhibition. But exhibitors are expected to exercise constant supervision over their articles on exhibition, as the Association will not be responsible for loss or damage by theft, fire or otherwise. Small and valuable articles should be exhibited in show cases, which may be securely locked when desirable.

INQUIRIES

as to the Exhibition and its arrangements before the opening should be addressed to the Secretary at New Westminster. During the Exhibition inquiries may be made at the Association offices on the grounds.

INFORMATION FOR VISITORS.

Visitors may be assured of finding on the grounds everything necessary to the convenience and comfort of old or young, during the entire day. Ample restaurants and lunch rooms will serve meals and refreshments during hours of Exhibition, at reasonable rates. The city authorities will cooperate with the officers of the Association in every practicable manner to ensure the safety and contribute to the pleasure of visitors.

The formal opening will take place at 2 p. m. on Wednesday, 23rd September, at which time many distinguished persons have been invited to be present.

RESIDENCES TAKEN AT LOW RATES.

OFFICES AT NEW WESTMINSTER AND VANCOUVER, B. C., AND LONDON, ENGLAND.

AGENTS FOR COMMERCIAL UNION ASSURANCE COMPANY, OF LONDON.

JAMES D. RAE
TEA AND COFFEE

—* IMPORTER *—

AND DEALER IN

STAPLE • AND • FANCY • GROCERIES

Timothy, Red Clover,
Alsike Clover, White Clover.

A Full Line of Field and Garden Seeds.

TELEPHONE 97.

HILL & COATHAM
Dispensing Chemists

Columbia Street, New Westminster, B. C.

Manufacturers of the Celebrated

COLUMBIA * BAKING * POWDER

AGENTS FOR

* Coral Chocolate Company *

OF LONDON, ENGLAND.

☞ Orders by mail promptly attended to. ☛

RAND BROS., REAL ESTATE AGENTS.

— 35 —

A large number of special attractions, in addition to the regular exhibition, of which full particulars will be subsequently given, will be provided for the enjoyment of visitors.

Several bands of music will be present every afternoon and evening.

Intending visitors are particularly requested to read carefully and consider the following rules and regulations governing the exhibition, which will be in all cases strictly enforced.

ADMISSION TO THE GROUNDS.

The price of admission will be 25 cents each time of entering. Admission will be by means of registering turnstiles, and each person must be provided with the proper ticket before entering.

GATE KEEPERS AND TICKET SELLERS

Turnstiles have been provided which will register every entrance to the grounds. In no case will any individual be allowed to pass through without first having deposited his ticket. Gate keepers will have to account to the Society according to the registration of these turnstiles. Separate gates will be provided through which all officers of the Association and others provided with passes will be admitted. Imperative instructions are given to the gate keeper that he will not recognize any authority but the pass issued by the Secretary bearing the presentor's name and address in full.

Tickets will be sold for 25 cents. Every individual entering the grounds will have to pay 25 cents each time of entering. Membership tickets, will, of course, entitle the party whose name appears upon them to admission, but not through the turnstiles.

It is undesirable that parties with teams or single buggies should be admitted to the grounds, but in order that no disputes may arise on this point, the arrangement has been made by which the following charge will be made:—For single horse and buggy, 50 cents for driver and vehicle; for team, \$1.00 for driver and vehicle. In the cases of both these, all other occupants will be charged the usual entrance fee of 25 cents.

Gate keepers will be instructed to be on the grounds not later than 8.30 a. m. each day, and will remain upon the grounds until permission to leave is granted by the Secretary.

DEAL LARGELY IN TIMBER LIMITS AND MINES.

NO TROUBLE TO SHOW PROPERTY. INFORMATION CHEERFULLY FURNISHED.

HAVE CHOICE BARGAINS IN TOWN LOTS.

E

ES

eds.

ts

a.

ER

*

AU BON MARCHÉ



A WONDERFUL SHOWING

In New and Seasonable Goods, of Unquestioned Merit in Quality and Style.

PRICES ARE RIGHT

ON EVERY SINGLE ARTICLE IN THIS ENTIRE STOCK. WE WILL PLEASE YOU AS YOU WERE NEVER PLEASED BEFORE.

Don't You Fail

To call and Inspect our Elegant Fall Stock

—OF—

Dress Goods, Mantles, Quilts, Linens,
Flannels, Sheetings, Blankets, Hosiery,
Corsets, Whitewear, Hats,
Men's and Boys' Clothing, &c.

H. B. SHADWELL & CO.

Columbia and Front Streets, New Westminster.

AGENTS for the NEW YORK DOMESTIC PAPER PATTERNS.

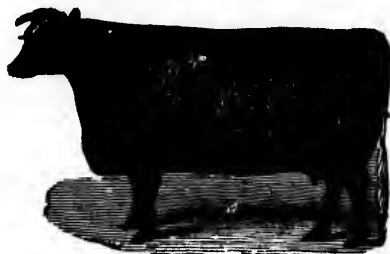
LIVERPOOL, LOTS FOR SALE BY RAND BROS.

PRIZE * LIST.

For instructions regarding entries, etc., see page 13.

DIVISION A.

(Certified pedigrees must be produced in all classes in this division except where animal is under 6 months.)



DURHAMS.

CLAS.		FIRST.	SECOND.
1	Bull, 3 years old and upwards.....	\$20 00	\$15 00
2	" 2 do do do	15 00	10 00
3	" 1 do do do	10 00	7 00
4	Bull Calf, under 1 year.....	5 00	3 00
5	Bull, any age.....	Silver Medal.	
6	Cow, 3 years old and upwards.....	20 00	15 00
7	Heifer, 2 years old.....	10 00	7 00
8	" 1 do	7 50	5 00
9	Heifer Calf, under 1 year.....	5 00	3 00
10	Herd, consisting of 1 bull and 4 females, over 1 year.....	30 00	

HOLSTEINS.

CLASS.		FIRST.	SECOND.
11	Bull, 3 years old and upwards.....	\$20 00	\$15 00
12	" 2 do do	15 00	10 00
13	" 1 do do	10 00	7 00
14	Bull Calf, under 1 year.....	5 00	3 00
15	Bull, any age.....	Silver Medal.	
16	Cow, 3 years old and upwards.....	20 00	15 00

Entries positively close Tuesday, September 8th, 1891.

V ANCOUVER LOTS FOR SALE BY RAND BROS.

LOTS ON THE TRAMWAY LINE FOR SALE BY RAND BROS.

NEW WESTMINSTER LOTS FOR SALE BY RAND BROS.

MAJOR & PEARSON,

Real Estate Brokers

FIRE AND LIFE

INSURANCE AGENTS.



CITY LOTS FOR SALE IN

NEW WESTMINSTER AND VANCOUVER

FARMS FOR SALE.

HOUSES TO RENT.

MONEY TO LOAN.

NEW WESTMINSTER, B. C.

Bank of B. C. Block, opposite P. O.

VANCOUVER, B. C.

Hastings Street, opposite P. O.

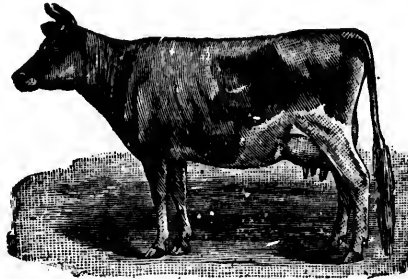
BUY AN ACRE OR TWO. SURE TO GIVE FINE RETURNS.

RAND BROS., REAL ESTATE AGENTS.

-- 39 --

Entries positively close Tuesday, September 8th, 1891.

CLASS.	HOLSTEINS—Continued.	FIRST.	SECOND.
17	Heifer, 2 years old.....	10 00	7 00
18	“ 1 do	7 50	5 00
19	Heifer Calf, under 1 year.....	5 00	3 00
20	Herd, consisting of 1 bull and 4 females, over 1 year.....	30 00	



JERSEYS.

CLASS.		FIRST.	SECOND.
21	Bull, 3 years old and upwards.....	\$20 00	\$15 00
22	“ 2 do do	15 00	10 00
23	“ 1 do do	10 00	7 00
24	Bull Calf, under 1 year.....	5 00	3 00
25	Bull, any age.....	Silver Medal.	
26	Cow, 3 years old and upwards.....	20 00	15 00
27	Heifer, 2 years old.....	10 00	7 00
28	“ 1 do	7 50	5 00
29	Heifer Calf, under 1 year.....	5 00	3 00
30	Herd, consisting of 1 bull and 4 females, over 1 year.....	30 00	

AYRSHIRES.

CLASS.		FIRST.	SECOND.
31	Bull, 3 years old and upwards.....	\$20 00	\$15 00
32	“ 2 do do	15 00	10 00
33	“ 1 do do	10 00	7 00
34	Bull Calf.....	5 00	3 00
35	Bull, any age.....	Silver Medal.	
36	Cow, 3 years old and upwards.....	20 00	15 00
37	Heifer, 2 years old.....	10 00	7 00
38	“ 1 do	7 50	5 00

For instructions regarding entries, etc., see page 13.

BEST BARGAINS ON THE MARKET.

BUY AN ACRE OR TWO. SURE TO GIVE FINE RETURNS.

HAVE CHOICE ACREAGE ON TRAMWAY BETWEEN WESTMINSTER AND VANCOUVER.

RS

VER

P. O.

P. O.

GO TO CHEAPSIDE

-FOR-

EVERYTHING AND ANYTHING.

❖ MAINLAND ❖

Transfer, ❖ Hack, ❖ Livery ❖ and
Feed ❖ Stables.



FIRST-CLASS LIVERY RIGS

Turned out on
SHORT NOTICE,

ORDERS FOR HACKS

RECEIVED
Night and Day.

Draying and Teaming Promptly Attended to.

GILLEY BROS.,

TELEPHONE No. 16.

PROPRIETORS.

CAMPBELL'S
CORNER

Bushby Block, Front Street,

IS THE PLACE TO BUY YOUR

CLOTHING

Hats and Caps,

TRUNKS and VALISES.

RAND BROS.

— 41 —

Entries positively close Tuesday, September 8th, 1891.

AGENTS OF COMMERCIAL UNION ASSURANCE COMPANY, OF LONDON.

OFFICES AT NEW WESTMINSTER AND VANCOUVER, B. C., AND LONDON, ENGLAND.

CLASS.	AYRSHIRES—Continued.	FIRST.	SECOND.
39	Heifer Calf.....	\$ 5 00	\$3 00
40	Herd, consisting of 1 bull and 4 females, over 1 year.....	30 00	

DEVONS.

CLASS.		FIRST.	SECOND.
41	Bull, 3 years old and upwards.....	\$20 00	\$15 00
42	“ 2 do do	15 00	10 00
43	“ 1 do do	10 00	7 00
44	Bull Calf.....	5 00	3 00
45	Bull, any age.....Silver Medal.		
46	Cow, 3 years old and upwards.....	20 00	15 00
47	Heifer, 2 years old.....	10 00	7 00
48	“ 1 do	7 50	5 00
49	Heifer Calf.....	5 00	3 00
50	Herd, consisting of 1 bull and 4 females, over one year.....	30 00	



HEREFORDS.

CLASS.		FIRST.	SECOND.
51	Bull, 3 years old and upwards.....	\$20 00	\$15 00
52	“ 2 do do	15 00	10 00
53	“ 1 do do	10 00	7 00
54	Bull Calf.....	5 00	3 00
55	Bull, any age.....Silver Medal.		
56	Cow, 3 years old and upwards.....	20 00	15 00
57	Heifer, 2 years old.....	10 00	7 00
58	“ 1 do	7 50	5 00
59	Heifer Calf.....	5 00	3 00
60	Herd, consisting of 1 bull and 4 females, over 1 year.....	30 00	

For instructions regarding entries, etc., see page 13.

RESIDENCES TAKEN AT LOW RATES.

W. & G. WOLFENDEN,

Columbia Street, opp. Colonial Hotel.

Family · Grocers

AND

Provision Dealers.

A · FULL · LINE · OF · IMPORTED · AND

Crosse & Blackwell's Goods

◦ ALWAYS ON HAND. ◦

FLOUR AND FEED

Of all kinds.

ALL GOODS FREE ON THE WHARF. ◉

RAND BROS.

- 43 -

Entries positively close Tuesday, September 8th, 1891.

GALLOWAYS.

CLASS.		FIRST.	SECOND.
61	Bull, 3 years old and upwards.....	\$20 00	\$15 00
62	" 2 do do	15 00	10 00
63	" 1 do do	10 00	7 00
64	Bull Calf.....	5 00	3 00
65	Bull, any age.....	Silver Medal.	
66	Cow, 3 years old and upwards.....	20 00	15 00
67	Heifer, 2 years old.....	10 00	7 00
68	" 1 do	7 50	5 00
69	Heifer Calf.....	5 00	3 00
70	Herd, consisting of 1 bull and 4 females, over 1 year.....	30 00	

POLLED ANGUS.

CLASS.		FIRST.	SECOND.
71	Bull, 3 years old and upwards.....	\$20 00	\$15 00
72	" 2 do do	15 00	10 00
73	" 1 do do	10 00	7 00
74	Bull Calf.....	5 00	3 00
75	Bull, any age.....	Silver Medal.	
76	Cow, 3 years old and upwards.....	20 00	15 00
77	Heifer, 2 years old.....	10 00	7 00
78	" 1 do	7 50	5 00
79	Heifer Calf.....	5 00	3 00
80	Herd, consisting of 1 bull and 4 females, over 1 year.....	30 00	

GUERNSEYS.

CLASS.		FIRST.	SECOND.
81	Bull, 3 years old and upwards.....	\$20 00	\$15 00
82	" 2 do do	15 00	10 00
83	" 1 do do	10 00	7 00
94	Bull Calf.....	5 00	3 00
85	Bull, any age.....	Silver Medal.	
86	Cow, 3 years old and upwards.....	20 00	15 00
87	Heifer, 2 years old.....	10 00	7 00
88	" 1 do	7 50	5 00
89	Heifer Calf.....	5 00	3 00
90	Herd, consisting of 1 bull and 4 females, over 1 year.....	30 00	

For instructions regarding entries, etc., see page 13.

INFORMATION CHEERFULLY FURNISHED.

RESIDENCES TAKEN AT REASONABLE RATES.

AGENTS FOR FIRE AND ACCIDENT INSURANCE COMPANIES.

QUEEN'S HOTEL,

Columbia Street, New Westminster.

Finest Table in City.

— ❖ SAMPLE ROOMS FOR COMMERCIAL MEN. ❖ —

W. J. Glencross, - Proprietor.

Mechanics' Mill Co'y

LIMITED.

* FOR *

Doors, Sashes, Lumber,

❖ **Store Fixtures,** ❖

AND ALL KINDS OF FACTORY WORK.

BOAT CEDAR A SPECIALTY.

SATISFACTION GUARANTEED.

FOOT OF PELHAM STREET, - NEW WESTMINSTER, B.C.

L,
.
y.
or.
'y
er,
.
K.
Y.
B.C.

DAVID L'YAL & CO.

WHOLESALE AND RETAIL DEALERS IN

BOOKS

STATIONERY

FANCY * GOODS.

AGENTS FOR

Deery, Cornwall & Uxbridge Copies, Ma-
son & Risch France, Williams Piano.

CODDTS' ACETIC ACID.

DAVID L'YAL & CO.

10, BROADWAY, B.C.

IF YOU WANT TO BUY OR SELL, COMMUNICATE WITH THEM

BUY LOTS IN NEW WESTMINSTER.

— 45 —

Entries positively close Tuesday, September 8th, 1891.

ALDERNEYS.

CLASS.	FIRST.	SECOND.
91 Bull, 3 years old and upwards.....	\$20 00	\$15 00
92 " 2 do do	15 00	10 00
93 " 1 do do	10 00	7 00
94 Bull Calf.....	5 00	3 00
95 Bull, any age..... Silver Medal.		
96 Cow, 3 years old and upwards.....	20 00	15 00
97 Heifer, 2 years old.....	10 00	7 00
98 " 1 do	7 50	5 00
99 Heifer Calf.....	5 00	3 00
100 Herd, consisting of 1 bull and 4 females, over 1 year.....	30 00	

GRADED STOCK.

CLASS.	FIRST.	SECOND.
101 Grade Cow, 3 years old and upwards.....	\$20 00	\$10 00
102 Grade Heifer, 2 years old.....	10 00	5 00
103 " 1 do	7 50	4 00
104 Grade Heifer Calf, under 1 year old.....	5 00	2 50

FAT CATTLE.

CLASS.	FIRST.	SECOND.
105 Fat Ox or Steer, any age.....	\$15 00	\$10 00
106 Fat Steer, under 3 years old	20 00	10 00
107 Pair of Fat Cattle, of any age, neither of which are entered in other classes	25 00	15 00

~~Do~~ Cattle entered in other classes cannot be entered or shown as fat cattle.

108 Cow giving most milk.....	\$10 00
109 Cow making most butter during 24 hours of exhibition, milk to be handled and churned by a committee ap- pointed by the Association.....	10 00

For instructions regarding entries, etc., see page 13.

IF YOU WANT TO BUY OR SELL COMMUNICATE WITH THEM.

THE MOST SOLID AND PROGRESSIVE CITY ON THE COAST.



BEST BARGAINS ON THE MARKET.

TELEPHONE 107.

P.O. BOX 244.

F. J. Coulthard & Co.

→ NOTARIES PUBLIC ←

Real Estate Brokers

Insurance and Financial Agents.

Corner McKenzie and Clarkson Streets, - New Westminster, B.C.

Robson's * China * Hall

Has the Largest and Finest Assortment of

China, Glassware, and Crockery in the City.

* PRICES RIGHT. *

C. J. ROBSON, - Columbia Street.

A. DesBRISAY

→ DEALER IN ←

GROCERIES AND PROVISIONS, FLOUR AND FEED.

OPPOSITE C.P.R. STATION,

COLUMBIA STREET, - NEW WESTMINSTER B.C.

NO TROUBLE TO SHOW PROPERTY. INFORMATION CHEERFULLY FURNISHED.

RAND BROS., REAL ESTATE AGENTS.

— 47 —

Entries positively close Tuesday, September 8th, 1891.

DIVISION B.

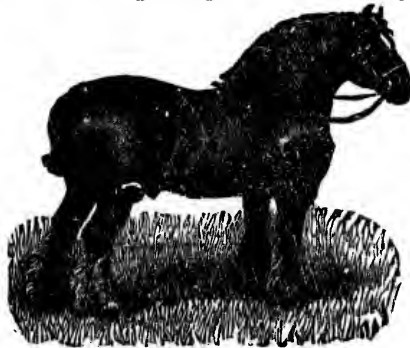


HORSES—ROADSTERS.

(Certified pedigrees must be produced for all stallions.)

CLASS.		FIRST.	SECOND.
1	Stallion 1891.....	\$30 00	\$15 00
2	Brood Mare.....	15 00	10 00
3	Mare, 3 years old or over.....	15 00	7 50
4	Gelding, 2 years old.....	7 50	5 00
5	Filly, 2 years old.....	7 50	5 00
6	Filly or Gelding, 1 year old.....	5 00	3 00
7	Foal of 1891.....	5 00	3 00
8	Pair Matched Horses (Geldings or Mares) in harness, 15 $\frac{3}{4}$ hands and under.....	20 00	10 00
9	Single Horse (Gelding or Mare) in har- ness, 15 $\frac{3}{4}$ hands and under.....	15 00	7 50
10	Saddle Horse.....	10 00	5 00
11	Ladies' Saddle Horse.....	10 00	5 00
12	Walking Horse, under saddle.....	10 00	5 00

For instructions regarding entries, etc., see page 13.



NO TROUBLE TO SHOW PROPERTY. INFORMATION CHEERFULLY FURNISHED.

HAVE CHOICE BARGAINS IN TOWN LOTS.

DEAL LARGELY IN TIMBER LIMITS AND MINES.

REID & CURRIE,

BRASS AND IRON

Founders and Machinists

Manufacturers and Importers of
MACHINERY * OF * ALL * KINDS.

IMPORTERS OF

IRON, STEEL, CHAIN,
COAL, ETC.

AGENTS FOR

JOHN DOTY'S
Marine, Stationary and Hoisting Engines.

A. R. WILLIAMS,
Manufacturer of and Dealer in all kinds of Machinery.

LONDON TOOL CO.,
Manufacturers of all kinds of Iron Working Tools.

ALSO AGENTS FOR

Brickyard and Sawmill Machinery
Duplex, Centrifugal and Rotary Pumps
Canning Machinery and Tools a Specialty.

JOHN CAMPBELL'S

CARRIAGES, HACKS, BUGGIES, PHAETONS AND WAGONS.

A Full Line of Above Always in Stock

RAND BROS., REAL ESTATE AGENTS.

— 49 —

Entries positively close Tuesday, September 8th, 1891.

DRAUGHT HORSES.

(Certified pedigrees must be produced for all classes.)

CLASS.		FIRST.	SECOND.
13	Clydesdale Stallion.....	\$30 00	\$15 00
14	Clydesdale Mare.....	20 00	10 00
15	Suffolk Punch Stallion.....	30 00	15 00
16	Suffolk Punch Mare.....	20 00	10 00
17	Percheron Stallion.....	30 00	15 00
18	Percheron Mare.....	20 00	10 00
19	Gelding, 3 years old or over.....	10 00	5 00
20	Filly, 3 do do.....	10 00	5 00
21	Gelding, 2 do.....	5 00	3 00
22	Filly, 2 do.....	5 00	3 00
23	Filly or Gelding, 1 year old.....	5 00	3 00
24	Foal of 1891.....	5 00	3 00
25	Span Draught Horses, Geldings or Mares.....	20 00	10 00
26	Pulling Team.....	20 00	10 00
27	Dray Horse.....	10 00	7 50
28	Walking Horse.....	10 00	7 50



GENERAL PURPOSE.

(Certified pedigrees must be produced for all stallions.)

CLASS.		FIRST.	SECOND.
29	Stallion.....	20 00	10 00
30	Brood Mare.....	10 00	5 00
31	Filly, 3 years old.....	10 00	7 50
32	Gelding, 2 years old.....	7 50	5 00
33	Filly, 2 do.....	7 50	5 00
34	Filly or Gelding, 1 year old.....	5 00	3 00
35	Foal of 1891.....	5 00	3 00
36	Pair of Matched Carriage Horses, Mares or Geldings, not less than 16½ hands, in harness.....	20 00	10 00

For instructions regarding entries, etc., see page 13.

LIVERPOOL, LOTS FOR SALE BY RAND BROS.

BUY AN ACRE OR TWO. SURE TO GIVE FINE RETURNS.

HAVE CHOICE ACREAGE ON TRAMWAY BETWEEN WESTMINSTER AND VANCOUVER.

G. T. LUNDY,

BOOTS · AND · SHOES

New Westminster, B. C.

<p>BASEBALL</p> <p>Shoes.</p>		<p>LACROSSE</p> <p>Shoes.</p>
--------------------------------------	--	--------------------------------------

Slippers, Rubbers, Gum Boots,
Blacking, Polish, Cement

And many other articles generally found
... in a first-class ...

Boot · and · Shoe · Store.

ORDERS BY MAIL PROMPTLY FILLED. ©

RAND BROS.

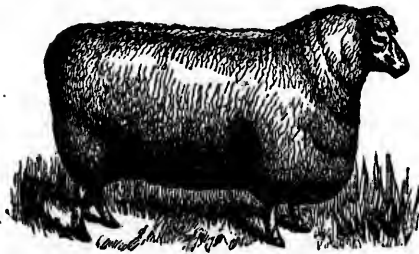
— 51 —

Entries positively close Tuesday, September 8th, 1891.

CLASS.	GENERAL PURPOSE—Continued.	FIRST.	SECOND.	
37	Single Carriage Horse, Gelding or Mare, not less than 16½ hands, in harness	15 00	7 50	
	[A general purpose horse is understood to be a horse that is suitable either for the wagon, carriage, buggy, saddle or plough.]			
38	Most graceful and accomplished lady rider [entrance fee, \$1; five to enter] whether member or not.....	\$10 00	\$7 50	\$5 00
39	Most graceful and accomplished gentleman rider [entrance fee, \$2; five to enter] whether member or not.....	10 00	7 50	5 00
	[No gentleman or lady will be allowed to ride faster than a moderate gallop. Running will forfeit all claim too premium. All contending for premiums in equestrianism will be required to exchange horses with one another at least once during the exhibition.]			
40	Exhibition of Horses, (must include 1 pedigreed stallion).....	\$35 00	\$20 00	

DIVISION C.

(Certified pedigrees must be produced with all rams in this division.)



SHEEP—LEICESTERS.

CLASS.		FIRST.	SECOND.
1	Ram, 2 shears and over.....	\$8 00	\$4 00
2	" Shearling.....	6 00	3 00

For instructions regarding entries, etc., see page 13.

RESIDENCES TAKEN AT LOW RATES.

OFFICES AT NEW WESTMINSTER AND VANCOUVER, B. C., AND LONDON, ENGLAND.

AGENTS FOR COMMERCIAL UNION ASSURANCE COMPANY, OF LONDON.

ES

SE

ots,

re.

MURRAY & GREIG,

Importers and Dealers in

Wall Paper, Mixed Paints, Brushes, Oils,

* Artists' Supplies, Etc. *

SIGN WRITING AND PAPER HANGING

Columbia Street, New Westminster.

D. MURCHIE,

Dealer in First-class

• Furniture •



Undertaker · and · Embalmer.

OPEN DAY AND NIGHT.

Country Orders Promptly Attended to.

→ GO TO ←

CHEAPSIDE

— FOR —

EVERYTHING AND ANYTHING.

NO TROUBLE TO SHOW PROPERTY. INFORMATION CHEERFULLY FURNISHED.

RAND BROS.

— 53 —

Entries positively close Tuesday, September 8th, 1891.

NO TROUBLE TO SHOW PROPERTY. INFORMATION CHEERFULLY FURNISHED.

CLASS.	LEICESTERS—Continued.	FIRST.	SECOND.
3	Ram Lamb.....	4 00	2 00
4	Two Ewes, 2 shears and over.....	8 00	4 00
5	“ “ Shearlings.....	6 00.	3 00
6	“ “ Lambs.....	4 00	2 00
7	Pen of Leicesters, 1 ram, 4 ewes and 2 ewe lambs.....	10 00	

SOUTHDOWNS.

8	Ram, 2 shears and over.....	\$8 00	\$4 00
9	“ Shearling.....	6 00	3 00
10	“ Lamb.....	4 00	2 00
11	Two Ewes, 2 shears and over.....	8 00	4 00
12	“ “ Shearlings.....	6 00	3 00
13	“ “ Lambs.....	4 00	2 00
14	Pen of Southdowns: 1 ram, 4 ewes and 2 ewe lambs.....	10 00	

COTSWOLDS.

15	Ram, 2 shears and over.....	\$8 00	\$4 00
16	“ Shearling.....	6 00	3 00
17	“ Lamb.....	4 00	2 00
18	Two Ewes, 2 shears and over.....	8 00	4 00
19	“ “ Shearlings.....	6 00	3 00
20	“ “ Lambs.....	4 00	2 00
21	Pen of Cotswolds: 1 ram, 4 ewes and 2 ewe lambs.....	10 00	

Shropshire or Hampshire Downs.

22	Ram, 2 shears and over.....	\$8 00	\$4 00
23	“ Shearling.....	6 00	3 00
24	“ Lamb.....	4 00	2 00
25	Two Ewes, 2 shears and over.....	8 00	4 00
26	“ “ Shearlings.....	6 00	3 00
27	“ “ Lambs.....	4 00	2 00
28	Pen of Shropshire or Hampshire Downs: 1 ram, 4 ewes and 2 ewe lambs.....	10 00	

OXFORD DOWNS.

29	Ram, 2 shears and over.....	\$8 00	\$4 00
30	“ Shearling.....	6 00	3 00
31	“ Lamb.....	4 00	2 00

For instructions regarding entries, etc., see page 13.

INFORMATION CHEERFULLY FURNISHED.

HAVE CHOICE BARGAINS IN TOWN LOTS.

THE COLUMBIAN

DAILY AND WEEKLY.

The Pioneer Newspaper of the Mainland.
 Best Advertising Medium in Lower Mainland.
 Reasonable Contract Advertising Rates on Application.
 Unexcelled in the Province as a General Newspaper.
 Perfectly Independent in Politics.
 Sample Copies Sent Free to Any Address.

Daily Columbian, \$8.00 per Annum in Advance, Mailed.
 Weekly Columbian, \$2.00 per Annum in Advance, Mailed.

KENNEDY BROS., Proprietors.

OFFICES: Powell Block, 510 Columbia Street, Cor. Lytton Square,
NEW WESTMINSTER, B. C.

"THE CROWN"

HACK, LIVERY AND FEED STABLES

826 Carnarvon Street, Near Blackie.



First-class Livery Rigs

—ON—

SHORT NOTICE.

Orders for

HACKS and CARRIAGES

RECEIVED

DAY AND NIGHT.

Good Driving and Riding Horses, and Careful Drivers.

A. E. CLARKE,

TELEPHONE 45.

PROPRIETOR.

IF YOU WANT TO BUY OR SELL COMMUNICATE WITH THEM.

BUY LOTS IN NEW WESTMINSTER.

— 55 —

Entries positively close Tuesday, September 8th, 1891.

IF YOU WANT TO BUY OR SELL COMMUNICATE WITH THEM.

CLASS.	OXFORD DOWNS—Continued.	FIRST.	SECOND.
32	Two Ewes, 2 shears and over.....	8 00	4 00
33	“ “ Shearlings.....	6 00	3 00
34	“ “ Lambs	4 00	2 00
35	Pen of Oxford Downs: 1 ram, 4 ewes and 2 ewe lambs.....	10 00	

MERINOS.

36	Ram, 2 shears and over.....	\$ 8 00	\$4 00
37	“ Shearling	6 00	3 00
38	“ Lamb	4 00	2 00
39	Two Ewes, 2 shears and over.....	8 00	4 00
40	“ Shearlings.....	6 00	3 00
41	“ Lambs	4 00	2 00
42	Pen Merinos: 1 ram, 4 ewes and 2 ewe lambs.....	10 00	

DIVISION D.



BERKSHIRE.

(Certified pedigrees must be produced with all boars.)

CLASS.		FIRST.	SECOND.
1	Boar, 1 year old and under 2.....	\$10 00	\$5 00
2	“ under 1 year	7 00	4 00
3	Sow, over 2 years	12 00	6 00
4	“ 1 year and under 2.....	10 00	5 00
5	“ under 1 year.....	7 00	4 00
6	Best Improved Boar and 2 Sows.....	15 00	

POLAND CHINA.

7	Boar, 1 year and under 2	\$10 00	\$5 00
8	“ under 1 year.....	7 00	4 00
9	Sow, 2 years old and upwards.....	12 00	6 00

For instructions regarding entries, etc., see page 13

BEST BARGAINS ON THE MARKET.

THE MOST SOLID AND PROGRESSIVE CITY ON THE COAST.

RAND BROS., REAL ESTATE AGENTS.

— 56 —

Entries positively close Tuesday, September 8th, 1891.

AGENTS OF COMMERCIAL UNION ASSURANCE COMPANY, OF LONDON.

CLASS.	POLAND CHINA—Continued.	FIRST.	SECOND.
10	“ 1 year old and under 2.....	10 00	5 00
11	“ under 1 year.....	7 00	4 00
12	Best Improved Boar and 2 Sows.....	15 00	

ESSEX.

13	Boar, 1 year and under 2.....	\$10 00	\$5 00
14	“ under 1 year.....	7 00	4 00
15	Sow, 2 years old and upwards.....	12 00	6 00
16	1 year old and under 2.....	10 00	5 00
17	under 1 year.....	7 00	4 00
18	Best Improved Boar and 2 Sows.....	15 00	

WHITE CHESTER.

19	Boar, 1 year and under 2.....	\$10 00	\$5 00
20	“ under 1 year.....	7 00	4 00
21	Sow, 2 years old and upwards.....	12 00	6 00
22	“ 1 year and under 2.....	10 00	5 00
23	“ under 1 year.....	7 00	4 00
24	Best improved Boar and 2 Sows.....	15 00	

SUFFOLK.

25	Boar 1 year and under 2.....	\$10 00	\$5 00
26	“ under 1 year.....	7 00	4 00
27	Sow, 2 years old and upwards.....	12 00	6 00
28	“ 1 year old and under 2.....	10 00	5 00
29	“ Under 1 year.....	7 00	4 00
30	Best Improved Boar and 2 Sows.....	15 00	

YORKSHIRE.

31	Boar, 1 year and under 2.....	\$10 00	\$5 00
32	“ under 1 year.....	7 00	4 00
33	Sow, 2 years old and upwards.....	12 00	6 00
34	“ 1 year and under 2.....	10 00	5 00
35	“ Under 1 year.....	7 00	4 00
36	Best Improved Boar and 2 Sows.....	15 00	

For instructions regarding entries, etc., see page 13.

DEAL LARGELY IN TIMBER LIMITS AND MINES.

OFFICES AT NEW WESTMINSTER AND VANCOUVER, B. C., AND LONDON, ENGLAND.

NO TROUBLE TO SHOW PROPERTY. INFORMATION CHEERFULLY FURNISHED.

RAND BROS.

— 57 —

Entries positively close Tuesday, September 8th, 1891.

DIVISION E.

This division under the management of the Mainland Poultry Association.



POULTRY.

CLASS.		FIRST.	SECOND.
1	Turkey Cock, bronze.....	\$ 1 50	50
2	" Hen, ".....	1 50	50
3	Gander, Toulouse.....	1 50	50
4	Goose, ".....	1 50	50
5	Gander, Embden.....	1 50	50
6	Goose, ".....	1 50	50
7	Gander, any other variety.....	1 50	50
8	Goose, ".....	1 50	50
9	Drake, Pekin.....	1 00	50
10	Duck, ".....	1 00	50
11	Drake, Rouen.....	1 00	50
12	Duck, ".....	1 00	50
13	Drake, Aylesbury.....	1 00	50
14	Duck, ".....	1 00	50
15	Drake, Cayuga.....	1 00	50
16	Duck, ".....	1 00	50
17	Drake, any other variety.....	1 00	50
18	Duck, ".....	1 00	50
19	Cock, Black Spanish.....	1 00	50
20	Hen, ".....	1 00	50
21	Breeding Pen, do.....	5 00	
22	Cock, Dorking.....	1 00	50

For instructions regarding entries, etc., see page 13.

BEST BARGAINS ON THE MARKET.

HAVE CHOICE BARGAINS IN TOWN LOTS.

NO TROUBLE TO SHOW PROPERTY. INFORMATION CHEERFULLY FURNISHED.

OFFICES AT NEW WESTMINSTER AND VANCOUVER, B. C., AND LONDON, ENGLAND.

COND.

5 00
4 00

\$5 00
4 00
6 00
5 00
4 00

\$5 00
4 00
6 00
5 00
4 00

\$5 00
4 00
6 00
5 00
4 00

\$5 00
4 00
6 00
5 00
4 00

INES.

RAND BROS., REAL ESTATE AGENTS.

-- 58 --

Entries positively close Tuesday, September 8th, 1891.

BUY AN ACRE OR TWO. SURE TO GIVE FINE RETURNS.

CLASS.	POULTRY—Continued.	FIRST.	SECOND.
23	Hen, Dorking	\$ 1 00	\$ 50
24	Breeding Pen, do	5 00	
25	Cock, Brahma (light)	1 00	50
26	Hen, " "	1 00	50
27	Breeding Pen, do	5 00	
28	Cock, Brahma (dark)	1 00	50
29	Hen, " "	1 00	50
30	Breeding Pen	5 00	
31	Cock, Poland, white crested, black	1 00	50
32	Hen, " " " "	1 00	50
33	Breeding Pen, do	5 00	
34	Cock, Poland, white	1 00	50
35	Hen, " "	1 00	50
36	Cock, " silver	1 00	50
37	Hen, " "	1 00	50
38	Cock, " golden	1 00	50
39	Hen, " "	1 00	50
40	Breeding Pen, do	5 00	
41	Cock, Cochin, buff	1 00	50
42	Hen, " "	1 00	50
43	Breeding Pen, do	5 00	
44	Cock, Cochin, partridge	1 00	50
45	Hen, " "	1 00	50
46	Breeding Pen, do	5 00	
47	Cock, Cochin, white	1 00	50
48	Hen, " "	1 00	50
49	Breeding Pen, do	5 00	
50	Cock, Cochin, black	1 00	50
51	Hen, " "	1 00	50
52	Cock, Langshang	1 00	50
53	Hen, " "	1 00	50
54	Breeding Pen, do	5 00	
55	Cock, Leghorn, white	1 00	50
56	Hen, " "	1 00	50
57	Breeding Pen, do	5 00	
58	Cock, Leghorn, brown	1 00	50
59	Hen, " "	1 00	50
60	Breeding Pen, do	5 00	
61	Cock, Leghorn, black	1 00	50
62	Hen, " "	1 00	50
63	Breeding Pen, do	5 00	

For instructions regarding entries, etc., see page 13.

INFORMATION CHEERFULLY FURNISHED.

HAVE CHOICE ACREAGE ON TRAMWAY BETWEEN WESTMINSTER AND VANCOUVER.

—* COLUMBIA HOUSE *—

(Established 1862.)

Campbell & Anderson

(SUCCESSORS TO JAMES CUNNINGHAM)

WHOLESALE and RETAIL DEALERS

— IN —

GENERAL HARDWARE, PAINTS, OILS AND WINDOW GLASS.

A FINE ASSORTMENT of CARPENTERS' TOOLS, POCKET AND TABLE CUTLERY ALWAYS ON HAND.

ROPE AND TACKLE, PITCH, TAR AND OAKUM, STOVES, GRATES, TINWARE AND WOODENWARE.

HOUSE FURNISHINGS OF ALL KINDS.

GARDEN AND FARM IMPLEMENTS, FENCE WIRE—WOVEN, PLAIN AND BARBED. WHEEL-BARROWS, CHURNS, LAWN MOWERS, Etc.

OUR STOCK OF CROCKERY, GLASSWARE AND LAMP GOODS IS POSITIVELY THE MOST COMPLETE IN THE DISTRICT.

CALL AND SEE OUR DINNER AND TEA SETS AND FANCY GOODS OF EVERY DESCRIPTION.

PRICES AWAY DOWN

616 COLUMBIA ST.,

NEW WESTMINSTER.

HAVE CHOICE ACREAGE ON TRAMWAY BETWEEN WESTMINSTER AND VANCOUVER.

COND.
\$ 50

50
50

50
50

50
50

50
50

50
50

50
50

50
50

50
50

50
50

50
50

50
50

50
50

50
50

ED.

OFFICES AT NEW WESTMINSTER AND VANCOUVER, B. C., AND LONDON, ENGLAND.

RAND BROS.

— 60 —

Entries positively close Tuesday, September 8th, 1891.

CLASS.	POULTRY—Continued.	FIRST.	SECOND.
64	Cock, Leghorn, rose comb	\$ 1 00	\$ 50
65	Hen, " "	1 00	50
66	Breeding Pen.....	5 00	
67	Cock, Plymouth Rock, barred.....	1 00	50
68	Hen, " " "	1 00	50
69	Breeding Pen, do.....	5 00	
70	Cock, Plymouth Rock, white.....	1 00	50
71	Hen, " " "	1 00	50
72	Breeding Pen, do.....	5 00	
73	Cock, Hamburg, black.....	1 00	50
74	Hen, " "	1 00	50
75	Breeding Pen, do.....	5 00	
76	Cock, Hamburg, golden pencilled.....	1 00	50
77	Hen, " " "	1 00	50
78	Breeding Pen, do.....	5 00	
79	Cock, Hamburg, silver pencilled.....	1 00	50
80	Hen, " " "	1 00	50
81	Breeding Pen, do.....	5 00	
82	Cock, Hamburg, golden spangled.....	1 00	50
83	Hen, " " "	1 00	50
84	Breeding Pen, do.....	5 00	
85	Cock, Hamburg, silver spangled.....	1 00	50
86	Hen, " " "	1 00	50
87	Breeding Pen, do.....	5 00	
88	Cock, Wyandotte, black.....	1 00	50
89	Hen, " " "	1 00	50
90	Breeding Pen, do.....	5 00	
91	Cock, Wyandotte, white.....	1 00	50
92	Hen, " " "	1 00	50
93	Breeding Pen, do.....	5 00	
94	Cock, Wyandotte, laced.....	1 00	50
95	Hen, " " "	1 00	50
96	Breeding Pen, do.....	5 00	
97	Cock, Game, black red.....	1 00	50
98	Hen, " " "	1 00	50
99	Breeding Pen, do.....	5 00	
100	Cock, Game, brown red.....	1 00	50
101	Hen, " " "	1 00	50
102	Breeding Pen, do.....	5 00	
103	Cock, Game, black.....	1 00	50
104	Hen, " " "	1 00	50

AGENTS OF COMMERCIAL UNION ASSURANCE COMPANY, OF LONDON.

For instructions regarding entries, etc., see page 13.

RESIDENCES TAKEN AT LOW RATES.

BUY LOTS IN NEW WESTMINSTER.

— 62 —

Entries positively close Tuesday, September 8th, 1891.

CLASS.	POULTRY—Continued.	FIRST.	SECOND.
105	Cock, Game, pile	\$ 1 00	\$ 50
106	Hen, " "	1 00	50
107	Cock, Game, duckwing	1 00	50
108	Hen, " "	1 00	50
109	Cock, any other variety	1 00	50
110	Hen, " " "	1 00	50
111	Cock, Java, black	1 00	50
112	Hen, " "	1 00	50
113	Cock, Java, white	1 00	50
114	Hen, " "	1 00	50
115	Cock, Minorca, black	1 00	50
116	Hen, " "	1 00	50
117	Breeding Pen, do	5 00	
118	Cock, Minorca, white	1 00	50
119	Hen, " "	1 00	50
120	Breeding Pen, do	5 00	
121	Cock, Houdan	1 00	50
122	Hen, "	1 00	50
123	Breeding Pen, do	5 00	
124	Cock, La Fleche	1 00	50
125	Hen, "	1 00	50
126	Cock, Silkies	1 00	50
127	Hen, "	1 00	50
128	Cock, Bantam, game, black red	75	
129	Hen, " " "	75	
130	Cock, " " brown red	75	
131	Hen, " " "	75	
132	Cock, " " duckwing	75	
133	Hen, " " "	75	
134	Cock, " " pile	75	
135	Hen, " " "	75	
136	Cock, " Rose Comb	75	
137	Hen, " " "	75	
138	Cock, " Golden Sebright	75	
139	Hen, " " "	75	
140	Cock, " Silver Sebright	75	
141	Hen, " " "	75	
142	Cock, " Japanese	75	
143	Hen, " "	75	
144	Cock, " Pekin	75	
145	Hen, " "	75	
146	Cock, " Polish	75	

IF YOU WANT TO BUY OR SELL COMMUNICATE WITH THEM.

THE MOST SOLID AND PROGRESSIVE CITY ON THE COAST.

LIVERPOOL, LOTS FOR SALE BY RAND BROS.

H. T. READ & CO.

— THE LEADING —

HARDWARE AND PAINT MERCHANTS

Of New Westminster.



We are now opened out in our new quarters
in the Armstrong-Young Block,

— COLUMBIA STREET —

Carrying as usual a Full Line of

Shelf :: and :: Heavy :: Hardware.



READY MIXED PAINTS IN EVERY SHADE

Of the Finest Quality.

White Lead, Oils, Varnishes, Pitch, Tar,
Oakum, Window Glass, Putty,

CHAIN, ANVILS, BELLOWS, WOOD AND IRON BLOCKS, ETC.



We carry the Largest Stock of

BUILDERS' HARDWARE

— In the City. —

Contractors and others erecting houses, should call on us and
get prices before purchasing elsewhere. Remember
our new quarters,

ARMSTRONG-YOUNG BLOCK,

COLUMBIA STREET.

COND.

50

50

50

50

50

50

50

50

50

50

50

50

50

50

50

50

50

50

50

50

50

50

50

THE MOST SOLID AND PROGRESSIVE CITY ON THE COAST.

OS.

CHAS. E. WOODS,
Provincial Land Surveyor.

A. GORDON GAMBLE,
Notary Public.

WOODS & GAMBLE,
LAND SURVEYORS

Real Estate, Insurance,
Commission and Financial Agents,
Conveyancers, Etc.

INSURANCE:

Western Assurance Co., of Toronto.
Hartford Fire Insurance Co., of Hartford.
Ætna Insurance Co., of Hartford.
Scottish Union and National of Edinburgh.
Firemans Fund Marine Ins. Co.
New York Life Ins. Co., of New York.
Travellers Accident Ins. Co., of Hartford.

* **COLUMBIA STREET,** *

New Westminster, . . . **British Columbia.**

P. O. BOX 264.

TELEPHONE NO. 46.

OND.

50
50
00
00
50
50
50
50
50
50
50

NEW WESTMINSTER LOTS FOR SALE BY RAND BROS.

OND.

50
50
50
50
50
50
50
50
50
50
50
50
50
50
50
50
50
50
50
50
50

OS.

RAND BROS.

— 66 —

Entries positively close Tuesday, September 8th, 1891.

DIVISION F.

There is a great demand for butter on the grounds, so that parties need not hesitate to make a large display.



DAIRY PRODUCE.

RESIDENCES TAKEN AT REASONABLE RATES.

AGENTS FOR FIRE AND ACCIDENT INSURANCE COMPANIES.

CLASS.	1ST.	2ND.	3RD.	4TH.
1 Butter, 10 lbs., in rolls or pats.	\$10 00	\$7 50	\$5 00	\$2 50
2 " Firkin or Crock, not less than 50 lbs.	15 00	10 00	7 00	4 00
3 Butter, 2 crocks, not less than 10 lbs. each or over 25 lbs.	10 00	7 50	5 00	3 00
4 Butter, 20 lbs., in rolls.	10 00	7 50	5 00	3 00
	FIRST.	SECOND.	THIRD.	
5 Cheese, factory (made in the Province), to be exhibited by the manufacturer	\$ 7 50			
6 Cheese, dairy, (made in the Province), to be exhibited by the maker	5 00	3 00		
7 Churn, manufactured in the Province	5 00	2 50		
8 Butter Worker, manufactured in the Province	3 00	1 50		
9 Utensils, best assortment for manufacture of butter	2 50	1 50		
10 Heaviest 12 Hens Eggs, fresh	1 00	50		
11 " 12 Turkey Eggs, fresh	1 00	50		
12 " 12 Duck Eggs, fresh	1 00	50		
13 Bread, 4 loaves, manufactured for sale	2 00	1 00		
14 Bread, 4 loaves, home made	2 00	1 00		
15 " 2 loaves, made by girls under 15 years of age	2 00	1 50	1 00	
16 Bread, 2 loaves, made by girls under 15 years (potatoo yeast)	1 00	50		

For instructions regarding entries, etc., see page 13.

RESIDENCES TAKEN AT LOW RATES.

※ GO TO ※

CHEAPSIDE

-FOR-

EVERYTHING AND ANYTHING.

ROYAL CITY MARKET

J. REICHENBACH,

Wholesale and Retail Dealer in

Fresh and Salt Meats, Fish, Game and Vegetables.

ONLY STEAM SAUSAGE MANUFACTORY IN THE CITY.

Front Street, Next to Vianen's Fish Market.

TELEPHONE No. 172.

FREE CITY DELIVERY.

DAVIDSON BROS.

NEW WESTMINSTER, B. C.

THE LEADING
Watchmakers and
Manuf'g. Jewellers.



Vancouver,
B. C.

VICTORIA,
B. C.

... A LARGE STOCK OF ...
WATCHES, CLOCKS, DIAMONDS,
SILVERWARE AND JEWELLERY
Always on Hand.
A Pleasure to Show Goods. * * *

AGENTS FOR FIRE AND ACCIDENT INSURANCE COMPANIES.

ties

4TH.
\$2 50

4 00

3 00

3 00

THIRD.

1 00

BUY LOTS IN NEW WESTMINSTER.

— 68 —

Entries positively close Tuesday, September 8th, 1891.

IF YOU WANT TO BUY OR SELL COMMUNICATE WITH THEM.

CLASS.	DAIRY PRODUCE.—Continued.	FIRST.	SECOND.
17	Soda Biscuit, made by girls under 15 years of age.....	1 00	50
18	Assortment of Cakes.....	3 00	2 00
19	Best Display of Honey in Comb, not less than 25 lbs.....	10 00	5 00
20	Best Display of Extracted Honey, not less than 25 lbs.....	10 00	5 00
21	Candies, best assortment, Provincial make.....	10 00	5 00
22	Coffee and Spice, best assortment, in tins, Provincial make.....		
Diploma		
23	Sugar and Syrups, best display, Provincial make.....		
Diploma		
24	Best Display Canned Fruits.....		
Diploma		
25	Incubator hatching largest number of eggs during exhibition.....	5 00	
26	Most Useful Apiarian Cage.....	3 00	
27	Wine, currant, one gallon, Provincial.....	3 00	
28	Cider, one gallon, Provincial.....	3 00	
29	Beer, from Provincial hops and malt.....	3 00	2 00
30	Porter.....	3 00	2 00
31	Ale.....	3 00	2 00
32	Flour, made in the Province.....	7 50	4 00
33	Oat Meal, 100 lbs., Provincial.....	6 00	3 00
34	Split Peas.....	2 50	1 50
35	Beet Root Sugar, 25 lbs.....	5 00	
36	Barrel of Cranberries.....	4 00	2 50
37	Salmon, barrel of pickled.....	7 50	4 00
38	“ Preserved in tins.....	7 50	4 00
39	“ Smoked.....	4 00	2 50
40	Herring, do.....	2 50	
41	Best Display of Canned Salmon.....		
Diploma		
42	Cigars, best display, white labor.....	7 50	
43	Tobacco Leaf, 10 lbs., grown in Province.....	6 00	
44	Home-made Fly Rod.....	4 00	2 00
45	Card Home-made Flies.....	2 50	
46	“ Imported Flies.....	2 50	

RAND BROS., REAL ESTATE AGENTS.

THE MOST SOLID AND PROGRESSIVE CITY ON THE COAST.

LOTS ON THE TRAMWAY LINE FOR SALE BY RAND BROS.

VANCOUVER LOTS FOR SALE BY RAND BROS.

— 69 —

Entries positively close Tuesday, September 8th, 1891.

DIVISION G.

This division is under the management of the Fruit Growers' Association of the Province of B. C.

VEGETABLES.

All vegetables must be named.

CLASS.		FIRST.	SECOND.
1	Potatoes, Burbant, 25lbs.....	\$3 00	\$2 00
2	" Rural No. 2, 25lbs.....	3 00	2 00
3	" Early Rose, 25lbs.....	3 00	2 00
4	" Early Sunrise, 25lbs.....	3 00	2 00
5	" Magnum Bonum, 25lbs.....	3 00	2 00
6	" Largest, 50lbs.....	3 00	2 00
7	" New variety not before exhibited, named.....	3 00	2 00
8	" Any other variety, named.....	3 00	2 00
9	" Three varieties, correctly named, 25lbs.....	5 00	3 00
10	" Best collection, 12 of each sort.....	3 00	2 00
11	Swede Turnips, White Globe, 6 roots.....	2 00	1 00
12	Swede Turnips, Greystone, 6 roots.....	2 00	1 00
13	Carrots, Short Horn.....	2 00	1 00
14	" Intermediate, 12 roots.....	2 00	1 00
15	Parsnips, 12.....	2 00	1 00
16	" Intermediate, 12.....	2 00	1 00
17	Cabbage, 2 best summer.....	2 00	1 00
18	" " winter.....	2 00	1 00
19	" 2 best Red.....	2 00	1 00
20	Brussels Sprouts, 2 stalks.....	2 00	1 00
21	Savoys, 2 best and largest.....	2 00	1 00
22	Cauliflower, best 2 heads.....	2 00	1 00
23	Onions, white 12 each.....	2 00	1 00
24	" Yellow, 12 each.....	2 00	1 00
25	" Red, 12 each.....	2 00	1 00
26	" White Pickling, 1 quart.....	2 00	1 00
27	" Yellow " ".....	2 00	1 00
28	Peas, green, best dish, 1 quart, shelled	2 00	1 00
29	Beans, scarlet runners, best dish.....	2 00	1 00
30	" Bush, best dish in pod.....	2 00	1 00
31	" Broad, best dish.....	2 00	1 00

For instructions regarding entries, etc., see page 13.

LIVERPOOL LOTS FOR SALE BY RAND BROS.

THE MOST SOLID AND PROGRESSIVE CITY ON THE COAST.

LOTS ON THE TRAMWAY LINE FOR SALE BY RAND BROS.

NEW WESTMINSTER LOTS FOR SALE BY RAND BROS.

OND.

RAND BROS., REAL ESTATE AGENTS.

— 70 —

Entries positively close Tuesday, September 8th, 1891.

NO TROUBLE TO SHOW PROPERTY. INFORMATION CHEERFULLY FURNISHED.

CLASS.	VEGETABLES—Continued.	FIRST.	SECOND.
32	Corn, table, 12 ears.....	2 00	1 00
33	Beets, long, 6 each.....	2 00	1 00
34	“ Globe, 6 each.....	2 00	1 00
35	Celery, white, 6 bunches.....	2 00	1 00
36	“ Red, “.....	2 00	1 00
37	“ Any other variety, 6 bunches.....	2 00	1 00
38	Lettuce, 6 heads.....	2 00	1 00
39	Radish, long, best dish.....	2 00	1 00
40	“ Turnip, best dish.....	2 00	1 00
41	Squash, best 2 heads for table.....	2 00	1 00
42	Pumpkins, for table, 2.....	2 00	1 00
43	Vegetable Marrows, 2.....	2 00	1 00
44	Tomatoes, best 12.....	2 00	1 00
45	“ best collection, 6 each.....	3 00	2 00
46	Cucumbers, best 6.....	2 00	1 00
47	“ dish for pickling.....	1 00	50
48	Collection of Vegetables, distinct from any other entries, each kind named, all grown by the exhibitor, varieties to be correctly named.....	10 00	5 00
49	Citrons, best 2.....	2 00	1 00
50	Melons, water, best 2.....	2 00	1 00
51	“ Musk, do.....	2 00	1 00
52	“ Nutmeg, best 2.....	2 00	1 00
53	Salsify, 6 roots.....	2 00	1 00
54	Kale, 2 heads.....	2 00	1 00

HAVE CHOICE BARGAINS IN TOWN LOTS.

BUY AN ACRE OR TWO. SURE TO GIVE FINE RETURNS.

DIVISION H.



FIELD PRODUCE.

All vegetables shown must be properly classified by name.

CLASS.		FIRST.	SECOND.	THIRD.
1	Wheat, autumn, 50 lbs.....	\$10 00	\$7 00	\$5 00
2	“ Spring “.....	10 00	7 00	5 00

BEST BARGAINS ON THE MARKET.

OFFICES AT NEW WESTMINSTER AND VANCOUVER, B. C., AND LONDON, ENGLAND.

RAND BROS.

— 72 —

Entries positively close Tuesday, September 8th, 1891.

DIVISION I.



This division is under the management of the Fruit Growers' Association of the Province of B. C.

FRUITS.

All fruits shown must be properly classified by name

CLASS.		FIRST.	SECOND.
1	Apples, 20 varieties, correctly named, 5 each.....	10 00	5 00
2	Apples, 10 varieties, correctly named, 5 each.....	7 00	4 00
3	Apples, 5 varieties, correctly named, 5 each, autumn dessert.....	5 00	3 00
4	Apples, 5 varieties, correctly named, 5 each, winter eating.....	5 00	3 00
5	Apples, 5 varieties, correctly named, 5 each, cooking.....	5 00	3 00
6	Apples, 5 Dutchess of Oldenburg.....	1 00	50
7	" 5 Gravenstein.....	1 00	50
8	" 5 Alexander.....	1 00	50
9	" 5 Any other variety, summer.....	1 00	50
10	" 5 Maiden's Blush.....	1 00	50
11	" 5 Colvert,.....	1 00	50
12	" 5 Twenty ounce Pippins,.....	1 00	50
13	" 5 Snow,.....	1 00	50
14	" 5 Wealthy,.....	1 00	50
15	" 5 Blenheim Orange,.....	1 00	50
16	" 5 Yellow Bell Flower,.....	1 00	50

For instructions regarding entries, etc., see page 13.

RESIDENCES TAKEN AT LOW RATES.

AGENTS OF COMMERCIAL UNION ASSURANCE COMPANY, OF LONDON.

IF YOU WANT TO BUY OR SELL COMMUNICATE WITH THEM.

BUY LOTS IN NEW WESTMINSTER.

- 73 -

Entries positively close Tuesday, September 8th, 1891.

IF YOU WANT TO BUY OR SELL COMMUNICATE WITH THEM.

CLASS.	FRUITS—Continued.	FIRST.	SECOND.
17	Apples, 5 any other variety, fall,	\$1 00	50
18	" 5 King of Tomkins,	1 00	50
19	" 5 Ribston Pippin,	1 00	50
20	" 5 Rhode Island Greening,	1 00	50
21	" 5 Baldwin,	1 00	50
22	" 5 Northern Spy,	1 00	50
23	" 5 Spitzenburg,	1 00	50
24	" 5 Golden Russet,	1 00	50
25	" 5 Roxbury "	1 00	50
26	" 5 Mann,	1 00	50
27	" 5 Ben Davis,	1 00	50
28	" 5 Canada Red,	1 00	50
29	" 5 McIntosh,	1 00	50
30	" 5 Any other variety,	1 00	50
31	" 5 Fall, seedling variety,	1 50	1 00
32	" 5 Winter, do do	1 50	1 00
33	Pears, 10 varieties, correctly named, 5 each	10 00	5 00
34	Pears, 5 varieties, correctly named, 5 each	7 00	4 00
35	Pears, 5 Bartletts,	1 00	50
36	" 5 Clapp's Favorite,	1 00	50
37	" 5 Seckel,	1 00	50
38	" 5 Souvenir de Congress,	1 00	50
39	" 5 Any other other variety, summer,	1 00	50
40	" 5 Flemish Beauty,	1 00	50
41	" 5 Lousie Bonne de Jersey,	1 00	50
42	" 5 White Doyenne,	1 00	50
43	" 5 Howell,	1 00	50
44	" 5 Sheldon,	1 00	50
45	" 5 Dutchess d'Angouleme,	1 00	50
46	" 5 Keiffer's Hybrid,	1 00	50
47	" 5 Any other other variety, fall,	1 00	50
48	" 5 Beurre Clairgeau,	1 00	50
49	" 5 Beurre d'Anjou,	1 00	50
50	" 5 Bosc,	1 00	50
51	" 5 Winter Nelis,	1 00	50
52	" 5 Lawrence,	1 00	50
53	" 5 Pound,	1 00	50
54	" 5 Vicar of Wakefield,	1 00	50
55	" 5 Any other variety, winter,	1 00	50

For instructions regarding entries, etc., see page 13.

RAND BROS., REAL ESTATE AGENTS.

THE MOST SOLID AND PROGRESSIVE CITY ON THE COAST.

AGENTS OF COMMERCIAL UNION ASSURANCE COMPANY, OF LONDON.

As-

COND.
5 00
4 00
3 00
3 00
3 00
50
50
50
50
50
50
50
50

VANCOUVER LOTS FOR SALE BY RAND BROS.

— 74 —

Entries positively close Tuesday, September 8th, 1891.

LOTS ON THE TRAMWAY LINE FOR SALE BY RAND BROS.

CLASS.	FRUIT—Continued.	FIRST.	SECOND.
56	Plums, 12 varieties, correctly named, 12 each.....	\$10 00	\$5 00
57	Plums, 6 varieties, green or yellow, correctly named, 12 each.....	7 00	4 00
58	Plums, 6 varieties, red or blue, correctly named, 12 each.....	7 00	4 00
59	Plums, 12 Lombard,.....	1 00	50
60	“ 12 Washington,.....	1 00	50
61	“ 12 Smith's Orleans,.....	1 00	50
62	“ 12 Coe's Golded Drop,.....	1 00	50
63	“ 12 Yellow Egg,.....	1 00	50
64	“ 12 Pond's Seedling,.....	1 00	50
65	“ 12 Riene Claude,.....	1 00	50
66	“ 12 Dawson,.....	1 00	50
67	“ 12 Red Egg,.....	1 00	50
68	“ 12 Fellenburg, or Italian Prune,.....	1 00	50
69	“ 12 French Prune,.....	1 00	50
70	“ 12 d'Agen Prune,.....	1 00	50
71	“ 12 German Prune,.....	1 00	50
72	“ 12 Any other variety, named,.....	1 00	50
73	Peaches, 6 Early Crawford,.....	1 00	50
74	“ 6 Foster,.....	1 00	50
75	“ 6 Wager,.....	1 00	50
76	“ 6 Late Crawford,.....	1 00	50
77	“ 6 Salway,.....	1 00	50
78	“ 6 Any other variety, named,.....	1 00	50
79	“ 6 Seedling,.....	1 00	50
80	“ Best collection, not less than 4 varieties, named, 6 each.....	5 00	3 00
81	Grapes, Concord, 4 bunches.....	1 00	50
82	“ Worden, “.....	1 00	50
83	“ Delaware, “.....	1 00	50
84	“ Brighton, “.....	1 00	50
85	“ Moyer, “.....	1 00	50
86	“ Niagara, “.....	1 00	50
87	“ Moore's Diamond, 4 bunches.....	1 00	50
88	“ Best collection, 2 bunches.....	2 00	1 00
89	Quince, Orange, 5.....	1 00	50
90	“ Reave's Mammoth, 5.....	1 00	50
91	“ Champion, 5.....	1 00	50
92	“ Any other variety, 5.....	1 00	50

NEW WESTMINSTER LOTS FOR SALE BY RAND BROS.

For instructions regarding entries, etc., see page 13.

LIVERPOOL LOTS FOR SALE BY RAND BROS.

NO TROUBLE TO SHOW PROPERTY. INFORMATION CHEERFULLY FURNISHED.

RAND BROS.

— 76 —

Entries positively close Tuesday, September 8th, 1891.

CLASS.	IMPLEMENTS, ETC—Continued.	FIRST.	SECOND.
17	Assortment Trunks and Valises	\$5 00	\$2 50
18	“ Wagons, Ploughs, Buggies &c., independent other entries	Diploma.	
19	Display of Agricultural Implements, Wagons, &c., others than made in the Province	Diploma.	
20	Display Musical Instruments, Pianos, Organs, &c., others than made in the Province	Diploma.	
21	Sign Writing and Wood Graining	10 00	5 00
22	Galvanized Ironwork for building pur- poses	10 00	5 00
23	Bunch Sawn Shingles	3 00	2 00
24	“ Shaved do.	3 00	2 00
25	Collection Earthenware	Diploma.	
26	Soap, best assortment	“	
27	Jewellery, best assortment, Provincial manufacture	5 00	
28	Cooking Stove	7 50	
29	Parlor do.	5 00	
30	Furniture, best assortment	15 00	10 00
31	Doors and Windows, best assortment	15 00	10 00
32	Marblework, do.	10 00	
33	Collection of Horseshoes	5 00	3 00
34	Matches, best assortment	2 00	1 00
35	Suit Boys' Clothing	3 00	2 00
36	“ Men's do.	3 00	2 00
37	“ of Dress Clothes	5 00	
38	“ of Business Clothes	5 00	
39	Boots and Shoes, best assortment	10 00	
40	Pair of Boots, calf, sewed	4 00	
41	“ “ Kipp, pegged	4 00	
42	Pair of Shoes, gents'	4 00	
43	“ “ ladies'	4 00	
44	Harness leather, not less than two hides	7 50	
45	Russet leather, do. do.	7 50	
46	Sole leather, do. do.	7 50	
47	Best Assortment of Leather	10 00	
48	“ “ of Harness and Sad- dlery	10 00	
49	Gloves	5 00	

For instructions regarding entries, etc., see page 13.

RESIDENCES TAKEN AT LOW RATES.

OFFICES AT NEW WESTMINSTER AND VANCOUVER, B. C., AND LONDON, ENGLAND.

AGENTS FOR COMMERCIAL UNION ASSURANCE COMPANY, OF LONDON.

AGENTS FOR FIRE AND ACCIDENT INSURANCE COMPANIES.

RAND BROS., REAL ESTATE AGENTS.

— 77 —

Entries positively close Tuesday, September 8th, 1891.

COND.
52 50

5 00
5 00
2 00
2 00

10 00
10 00
3 00
1 00
2 00
2 00

AGENTS FOR COMMERCIAL UNION ASSURANCE COMPANY, OF LONDON.

AGENTS FOR FIRE AND ACCIDENT INSURANCE COMPANIES.

CLASS.	IMPLEMENTS, ETC.—continued.	FIRST.	SECOND.
50	Best Assortment of Tweeds	\$10 00	
51	“ “ of Flannels	10 00	
52	“ “ of Blankets	10 00	
53	“ “ of Woolen Yarn	7 50	
54	Display of Shelf Hardware	Diploma.	
55	“ “ of Silverware	“	
56	“ “ of Stoves and Tinware	“	
57	“ “ of Heavy Hardware	“	
58	“ “ of Crockeryware	“	
59	“ “ of Lamps, &c.	“	
60	“ “ of Gas Fixtures	“	
61	“ “ of Carpets and Oilcloths	“	
62	“ “ of Groceries, Canned Goods	“	

DIVISION K.



Articles not before exhibited with this Society. Open to Amateurs only. Amateurs are to be understood as those who do not paint or teach for a livelihood or for profit, or habitually sell or offer for sale their productions, and who have not at any time heretofore done so.

CLASS.		FIRST.	SECOND.
1	Oil Color, figure or historical subject	\$5 00	\$2 00
2	“ Landscape	5 00	2 00
3	“ Marine	5 00	2 00
4	“ Animals, from life	4 00	2 00
5	“ Inanimate objects (not flowers or fruit)	4 00	2 00
6	Oil Color, Flowers	3 00	2 00

For instructions regarding entries, etc., see page 13.

BEST BARGAINS ON THE MARKET.

HAVE CHOICE BARGAINS IN TOWN LOTS.

RAND BROS.

— 78 —

Entries positively close Tuesday, September 8th, 1891.

AGENTS OF COMMERCIAL UNION ASSURANCE COMPANY, OF LONDON.

CLASS.	PAINTINGS, ETC.—Continued.	FIRST.	SECOND.
7	Oil Color, Fruit	\$3 00	\$2 00
8	“ Portrait	5 00	2 50
9	“ Collection (not to include other entries).....	10 00	5 00
10	Water Color, figure or historical subject	5 00	2 00
11	“ Landscape.....	5 00	2 00
12	“ Marine.....	5 00	2 00
13	“ Animals, from life.....	4 00	2 00
14	“ Inanimate objects (not flowers or fruit).....	4 00	2 00
15	“ Flowers.....	3 00	2 00
16	“ Fruit.....	3 00	2 00
17	“ Collection (not to include other entries).....	10 00	5 00
18	Largest and best collection of Oils and Water Colors, independent of other entries. (Open to professionals and may include articles before exhibited.).....	Diploma.	
19	Pencil drawing.....	2 50	
20	Drawing from the antique full figure	Diploma	
21	“ from the antique bust	3 00	
22	“ from objects, outline.....	3 00	
23	“ from objects, shaded (crayon or charcoal).....	3 00	
24	Portraits in crayon or pastile.....	3 00	
25	Pen and ink sketch.....	3 00	
26	Perspective drawing.....	3 00	
27	Geometrical drawing.....	3 00	
28	Animals (crayon).....	2 00	
29	Landscape (crayon).....	2 00	
30	Drawings illustrating historic styles of ornament.....	Diploma.	
31	Building construction.....	Diploma.	
32	Architectural Drawing.....	Diploma.	
33	Machine Drawing.....	Diploma.	
34	Designs suitable for industrial purposes	Diploma.	
35	Engraving on wood block, with proof	Diploma.	
36	Drawings on stone for lithography, with proof.....	Diploma.	
37	Etching on copper with proof.....	Diploma.	

For instructions regarding entries, etc., see page 13.

RESIDENCES TAKEN AT LOW RATES.

RESIDENCES TAKEN AT REASONABLE RATES.

BUY AN ACRE OR TWO. SURE TO GIVE FINE RETURNS.

RAND BROS., REAL ESTATE AGENTS.

— 79 —

Entries positively close Tuesday, September 8th, 1891.

HAVE CHOICE ACREAGE ON TRAMWAY BETWEEN WESTMINSTER AND VANCOUVER.

BUY AN ACRE OR TWO. SURE TO GIVE FINE RETURNS.

SECOND.
\$2 00
2 50
5 00
2 00
2 00
2 00
2 00
2 00
2 00
2 00
5 00

RESIDENCES TAKEN AT REASONABLE RATES.

CLASS.	PAINTINGS, ETC.—Continued.	FIRST.	SECOND.
38	Modelling in clay (plaster cast)	Diploma.	
39	Ornamental Penmanship, by boys and girls under 15	2 00	1 00
40	Specimen Penmanship	2 00	1 00
41	Assortment Printing, plain and ornamental	Diploma.	
42	Book Binding	Diploma.	
43	Decorative Printing	Diploma.	
44	Hand painted China	3 00	2 00
45	Repousse or Hammered Brasswork	3 00	
46	Collection Cabinet Photos, plain	Diploma.	
47	“ “ “ colored	Diploma.	
48	“ Photographs	Diploma.	
49	“ “ or Views by amateurs	2 00	
50	Collection Native Algæ (seaweed)	6 00	
51	“ Shells, marine	4 00	
52	“ Native Insects	4 00	
53	“ Stuffed Birds	5 00	
54	Canary, Green Cock	2 00	
55	“ Yellow Cock, free from black marks	2 00	
56	Canary, Crested Cock	2 00	
57	“ Splashed Cock	2 00	
58	“ other song	2 00	
59	Parrot	2 00	

DIVISION L.



FLORAL.

This Division is under the management of the Fruit Growers' Association of the Province of B. C.

CLASS.	FIRST.	SECOND.	THIRD.	
1	Collection of Stove and Greenhouse Plants, in pots, distinct from other entries	\$4 00	\$2 00	\$1 00

INFORMATION CHEERFULLY FURNISHED.

VANCOUVER LOTS FOR SALE BY RAND BROS.

— 80 —

Entries positively close Tuesday, September 8th, 1891.

LOTS ON THE TRAMWAY LINE FOR SALE BY RAND BROS.

CLASS.	FLORAL—Continued.	FIRST.	SECOND.	THIRD.
2	Collection Ornamental Grasses...	\$2 00	\$1 00	
3	Begonias, 6 Rex.....	2 00	1 00	
4	“ 6 Tuberous, rooted.....	2 00	1 00	
5	Collection Plants in Flower, grown in pots, distinct from other entries.....	4 00	2 00	1 00
6	Geraniums, 6 varieties, single, in pots.....	2 00	1 00	
7	Geraniums, 6 varieties, double, in pots.....	2 00	1 00	
8	Geraniums, specimen, single.....	1 00	50	
9	“ “ double.....	1 00	50	
10	Fuchias, 6.....	2 00	1 00	
11	“ specimen.....	1 00	50	
12	Balsams, 6 varieties.....	1 00	50	
13	Ferns, collection, in pots.....	2 00	1 00	
14	Hanging Baskets, 2.....	2 00	1 00	
15	Gloxinias, best collection, not less than 10 varieties.....	4 00	2 00	
16	Best Collection of Plants in Pots for amateurs only, not less than 10 varieties, (an amateur is one who does not sell plants).....	5 00	2 00	
17	Best Collection hardy evergreen shrubs.....	5 00	2 00	
18	Best Plant, single specimen any variety.....	2 00	1 00	
19	Best Collection Orchids.....	3 00	1 50	
20	“ “ Cacti, not less than 10 varieties.....	5 00	2 00	

CUT FLOWERS.

		FIRST.	SECOND.
21	Bouquet, for table.....	1 50	1 00
22	“ for hand.....	1 50	1 00
23	“ Bridal Bouquet.....	1 50	1 00
24	Sprays of Flowers for ladies, best 6.....	1 00	50
25	Gentlemen's Buttonhole, bouquet, 6.....	1 00	50
26	Marigolds, collection.....	1 00	50
27	Funeral design, flat.....	2 00	1 00
28	“ “ other than flat.....	2 50	1 25

For instructions regarding entries, etc., see page 13.

LIVERPOOL LOTS FOR SALE BY RAND BROS.

NEW WESTMINSTER LOTS FOR SALE BY RAND BROS.

NO TROUBLE TO SHOW PROPERTY. INFORMATION CHEERFULLY FURNISHED.

BROS.

RAND BROS.

- 81 -

Entries positively close Tuesday, September 8th, 1891.

OFFICES AT NEW WESTMINSTER AND VANCOUVER, B. C., AND LONDON, ENGLAND.

NO TROUBLE TO SHOW PROPERTY. INFORMATION CHEERFULLY FURNISHED.

CLASS.	CUT FLOWERS—Continued.	FIRST.	SECOND.
29	Petunias, collection, single.....	2 00	1 00
30	“ “ double.....	2 00	1 00
31	Phlox Drummondi, collection.....	2 00	1 00
32	Dianthus “.....	1 00	50
33	Phloxes, Perennial “.....	1 00	50
34	Hydrangeas “.....	2 00	1 00
35	Hollyhocks “.....	2 00	1 00
36	Lillies, collection.....	2 00	1 00
37	Medicinal Plants, best named collection	2 50	1 00
38	Wreath or Cross.....	2 50	1 00
39	Floral Design.....	2 00	1 00
40	Dahlias, 6, show.....	1 50	1 00
41	“ “ 6, Pompon.....	1 50	1 00
42	“ “ 6, single.....	1 50	1 00
43	“ collection.....	2 00	1 00
44	Pansies, collection.....	2 00	1 00
45	Roses, 6 Hybrid Perpetual.....	1 00	50
46	“ “ 6 Tea.....	1 00	50
47	“ collection.....	2 00	1 00
48	Poppies, collection.....	2 00	1 00
49	Gladiolus “.....	2 00	1 00
50	Picotee or Carnation, collection.....	2 00	1 00
51	Stocks, collection.....	1 00	50
52	Asters “.....	1 00	50
53	Zinnias “.....	1 00	50
54	Annuals “.....	2 00	1 00
55	Perennials “.....	2 00	1 00
56	Everlasting Flowers, collection.....	2 00	1 00
57	Celoria (Cockscomb) collection.....	2 00	1 00
58	Verbena, collection.....	2 00	1 00
59	Sweet Pea “.....	2 00	1 00

DIVISION M.

CLASS.		FIRST.	SECOND.
1	Painting on Silk, water colors.....	\$3 00	\$2 00
2	“ Plush, oil colors.....	3 00	2 00
3	“ Satin “.....	3 00	2 00
4	“ Terra Cotta, oil colors.....	3 00	2 00
5	“ Wood or Marble, oil colors..	3 00	2 00

For instructions regarding entries, etc., see page 13.

RESIDENCES TAKEN AT LOW RATES.

THIRD.

NEW WESTMINSTER LOTS FOR SALE BY RAND BROS.

1 00

SECOND.

1 00
1 00
1 00
50
50
50
1 00
1 25

OS.

RAND BROS.

— 82 —

Entries positively close Tuesday, September 8th, 1891.

CLASS.	PAINTINGS, ETC.—Continued.	FIRST.	SECOND.
6	Painting on Tapestry.....	3 00	2 00
7	“ Bolting Cloth.....	3 00	2 00
8	Shells, 2, oil colors.....	3 00	2 00

DIVISION N.

Lace, Wool Work, Embroidery. Etc.

CLASS.		FIRST.	SECOND.
1	Collection of Ladies' Fancy Work of various knids, independent of other entries, by any lady amateur.....	10 00	5 00
2	Collection of Ladies' Fancy Work of various kinds, independent of other entries, by any professional lady.....	10 00	5 00
3	Point Lace.....	2 00	1 00
4	Honiton Lace.....	2 00	1 00
5	Darned Net.....	2 00	1 00
6	Outline Work.....	2 00	1 00
7	Tinsel Work, gold or silver.....	2 00	1 00
8	Applique Work, on Satin.....	3 00	1 50
9	“ “ Plush.....	3 00	1 50
10	“ “ Cloth.....	3 00	1 50
11	Arrasene “.....	3 00	1 50
12	Handkerchief case.....	2 00	1 00
13	Gentleman's Smoking Cap, embroidered.....	2 00	1 00
14	Cross stitch Embroidery.....	2 00	1 00
15	Embroidered Slippers.....	2 00	1 00
16	Embroidery in Lace Stitches.....	2 00	1 00
17	Crewel Embroidery.....	2 00	1 00
18	Roman “ on white linen.....	2 00	1 00
19	Venetian “.....	2 00	1 00
20	Chenille Work.....	2 00	1 00
21	Crochet “ in cotton.....	2 00	1 00
22	“ “ in wool.....	2 00	1 00
23	“ “ in silk.....	2 00	1 00
24	Ring Work.....	2 00	1 00
25	Perforated Cloth Work.....	2 00	1 00
26	Braiding.....	2 00	1 00
27	Drawing Room Screen, embroidered.....	4 00	2 00
28	Hand Screen, embroidered.....	2 00	1 00

For instructions regarding entries, etc., see page 13.

DEAL LARGELY IN TIMBER LIMITS AND MINES.

RESIDENCES TAKEN AT REASONABLE RATES.

AGENTS OF COMMERCIAL UNION ASSURANCE COMPANY, OF LONDON.

BUY AN ACRE OR TWO. SURE TO GIVE FINE RETURNS.

BUY LOTS IN NEW WESTMINSTER. •

— 84 —

Entries positively close Tuesday, September 8th, 1891.

CLASS.	KNITTING, ETC.—Continued.	FIRST.	SECOND.
18	Knitting, plain Wool Stockings, 1 pair.....	\$2 00	
19	“ “ “ Socks, 1 pair.....	2 00	
20	“ “ Cotton Stockings.....	2 00	
21	“ “ Silk Stockings, children’s, 1 pair.....	2 00	1 00
22	Knitting, Plain Silk Mitts, 1 pair.....	2 00	1 00
23	“ “ Wool Mittens, 1 pair.....	2 00	1 00
24	“ “ “ coarse, 1 pair.....	2 00	1 00
25	“ Plain Wool Gloves, coarse.....	2 00	1 00
26	“ Wool Shirts and Drawers.....	2 00	
27	“ Socks and Stockings, fine.....	2 00	
28	“ “ coarse.....	2 00	
29	Ladies’ Underclothing, 1 handmade.....	2 00	1 00
30	Sewing, plain handmade.....	2 00	
31	“ on Silk or Satin.....	3 00	1 50
32	Shirts, Cotton handmade.....	2 00	1 00
33	“ “ machinemade.....	2 00	1 00
34	“ Flannel, handmade.....	2 00	1 00
35	“ “ machinemade.....	2 00	1 00
36	Nightgown, Flannel, handmade.....	2 00	
37	Quilt, Cotton Patchwork.....	2 00	1 00
38	“ Cloth “.....	2 00	1 00
39	“ Log Cabin “.....	2 00	1 00
40	“ Japanese or Crazy Patchwork.....	2 00	1 00
41	Rag Carpet, Woolen Warp.....	3 00	
42	“ “ Cotton “.....	3 00	
43	Rag Mats.....	2 00	1 00
44	Mats of any kind.....	2 00	1 00
45	Slumber Robe.....	3 00	2 00
46	Crochet Lace.....	2 00	1 00
47	Knitted “.....	2 00	1 00
48	Tea Cosey.....	2 00	1 00
49	Drawn Work.....	2 00	1 00
50	Knitted Slippers.....	1 00	
51	Darned Socks and Stockings.....	1 00	

IF YOU WANT TO BUY OR SELL COMMUNICATE WITH THEM.

THE MOST SOLID AND PROGRESSIVE CITY ON THE COAST.

LOTS ON THE TRAMWAY LINE FOR SALE BY RAND BROS.

For instructions regarding entries, etc., see page 13.

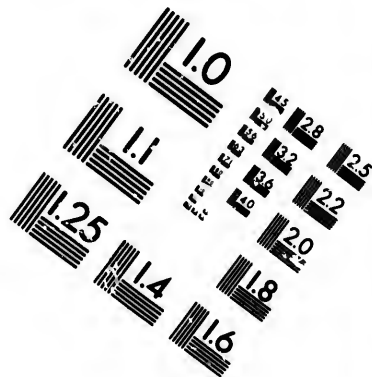
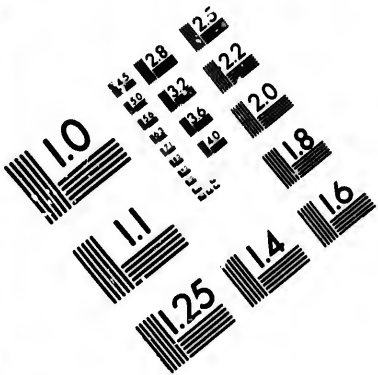
Lewis & Greig,

Printers, Bookbinders and Paper Rulers

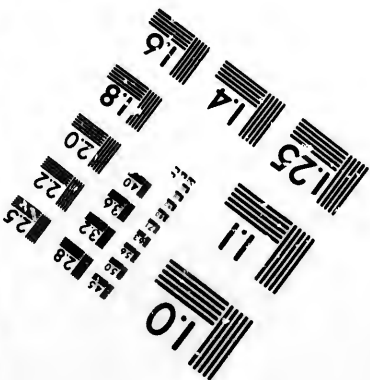
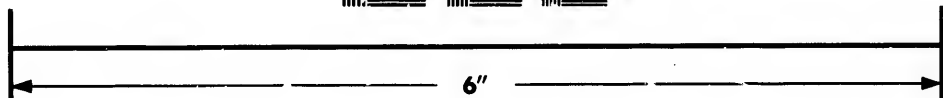
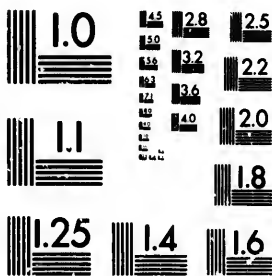
New Westminster.

RAND BROS., REAL ESTATE AGENTS.





**IMAGE EVALUATION
TEST TARGET (MT-3)**



**Photographic
Sciences
Corporation**

23 WEST MAIN STREET
WEBSTER, N.Y. 14580
(716) 872-4503

2.4
2.8
3.2
3.6
4.0
4.5
5.0
5.6
6.3
7.1
8.0
9.0
10.0
11.2
12.5
14.0
16.0
18.0
20.0
22.5
25.0
28.0
31.5
36.0
40.0
45.0
50.0
56.0
63.0
71.0
80.0
90.0
100.0

10
5

RAND BROS.

— 86 —

Entries positively close Tuesday, September 8th, 1891.

CLASS.	CHILDREN'S WORK—Continued.	FIRST.	SECOND.
5	Crochetwork in Cotton	1 00	50
6	Painting, any subject	1 00	50
7	Drawing, pencil or crayon	1 00	50
8	Best Dressed Doll	2 00	1 00
9	Doll's Basinette	1 00	50
10	Bead Work	1 00	50
11	Fancy Pin Cushion	1 00	50
12	Crochet Lace	1 00	50
13	Knitted "	1 00	50
14	Braiding	1 00	50

The Directors being desirous of making the children's department interesting, will award a silver medal to the one taking the largest number of prizes.

SPECIAL PRIZES.

STEELE BROS.—For the best Collection of Vegetables grown from their seeds—Seeds, Bulbs, and Plants, to the value of.....\$10.00

GEO. A. PERRIN—For the best Animal (under Division A), must have certified pedigree, and must be the winner for 3 consecutive years before becoming the property of the winner permanently—Cup, value.....\$50.00.

JOHN S. PEARCE & CO., SEEDSMEN, LONDON, ONT.—For the largest and best Collection of Garden Vegetables, 3 of each kind, properly named. Three roots each of the following to be included in said collection, viz.: Mammoth, Long, Red Mango'd; Giant, Yellow, Globe Mangold; Giant, Yellow, Intermediate Mangold; Swedish Turnip, any variety, and J. S. P. & Co's. Improved Short White Carrot. The seed to be purchased from them.....\$10.00.

PETER LATHAM—Annuals, largest, best, and most carefully arranged Collection, named, amateurs.....\$7.00; \$3.00.

PETER LATHAM—Largest and best display of Fern, not less than 12 varieties, amateurs.....\$10.00; \$5.00.

G. E. CORBOULD—Collection of Grain grown in the Province by the Exhibitor (distinct from other entries).....\$25.00.

MAJOR & PEARSON—Largest and best display of Plants in flower.....\$25.00.

WM. BAILLIE & CO., PROPRIETORS NEW WESTMINSTER LEDGER—To the Exhibitor scoring the largest aggregate number of points, in prizes, awarded at the Exhibition of 1891, for Horses and Cattle; points to score as follows: 1st prizes, 30 points; 2nd prizes, 20 points; 3rd prizes 10 points; for largest number of separate entries, 30 points—The Weekly Ledger for one year and.....\$50.00.

For instructions regarding entries, etc., see page 13.

RESIDENCES TAKEN AT LOW RATES.

OFFICES AT NEW WESTMINSTER AND VANCOUVER, B. C., AND LONDON, ENGLAND.

AGENTS FOR COMMERCIAL UNION ASSURANCE COMPANY, OF LONDON.

AGENTS FOR FIRE AND ACCIDENT INSURANCE COMPANIES.

RAND BROS., REAL ESTATE AGENTS.

— 87 —

Entries positively close Tuesday, September 8th, 1891.

SPECIAL PRIZES—Continued.

- KENNEDY BROS.—Largest and best Collection of Fruit, distinct from other entries—Daily Columbian for 1 year and..... \$25.00.
- CAMPBELL & ANDERSON—Best exhibit of Live Stock, owned by the exhibitor—Plough, value..... \$35.00.
- C. J. ROBSON—Collection of Flowers, in pots, amateurs—Pair Vases, value..... \$6.00.
- MACPHERSON & THOMSON—Oil Painting, by lady amateur, distinct from other entries—Perfume Set, value..... \$15.00.
- REID & CURRIE—Best Collection of Roots and Vegetables (distinct from other entries) named and grown by exhibitor—Plough, value..... \$25.00.
- JAMES D. RAE—Best Collection of Bottled Fruit and Jellies—..... 1st \$7.50, 2nd \$2.50.
- BELL-IRVING, PATERSON & CO.—Collection Shipping Apples, 6 varieties each; largest apples, any kind; Summer and Shipping Pears, 6 varieties; 6 each, named—..... \$20.00.
- GEO. D. BRYMNER—Flowers, Annuals, largest, best and most carefully arranged collection, named, (distinct from other entries)..... 1st \$7.50, 2nd \$2.50.
- D. LYAL & CO.—Oil Painting from Nature (distinct from other entries)—Steel Engraving, value \$20.00.
- OGLE, CAMPBELL & FREEMAN—Collection of Linen Work, by amateur, (distinct from other entries)—Dress Costume, value \$12.00.
- RAND BROS.—Best Animal under Division B., must have certified pedigree \$25.00.
- ARMSTRONG, ECKSTEIN & GAYNOR—Largest and best collection of Palms, not less than 6 varieties, amateur..... \$10.00.
- S. J. THOMPSON—Best Collection Ladies' Fancy Work, by amateur—Life size Portrait of the winner, or a member of the family, value..... \$18.00.
- LEWIS & GREIG—Best performance of Sheep Dog at work, Collie or any other breed. The performance to take place at such time on the 2nd day of the Fair as the directors may name, and in the horse ring. Judgment to be solely by points of merit in the performance, not breeding..... \$10.00.
- W. & G. WOLFENDEN—Best 50 lbs., in rolls, Fresh Butter—..... \$10.00; \$2.50.
- CUNNINGHAM BROS.—Bread, baked on the ground in their Warrior Cook Stove, must be 5 entries—Warrior Cook Stove, value \$32.00.
- WOODS, TURNER & GAMBLE—Largest and best display of thoroughbred Poultry, by amateur..... \$10.00.

For instructions regarding entries, etc., see page 13.

BEST BARGAINS ON THE MARKET.

AGENTS FOR FIRE AND ACCIDENT INSURANCE COMPANIES.

HAVE CHOICE BARGAINS IN TOWN LOTS.

AGENTS FOR COMMERCIAL UNION ASSURANCE COMPANY, OF LONDON.

COND.

50

50

50

1 00

50

50

50

50

50

50

ren's
e one

from
\$10.00
must
cutive
ntly—
\$50.00.

argest
pperly
n said
ellow,
eedish
White
ro 00.

ly ar-
\$3.00.
than
\$5.00.

by the
\$25.00.
ats in
\$25.00.

GER—
oints.
attle;
es, 20
tries,
\$50.00.

RAND BROS.

— 88 —

Entries positively close Tuesday, September 8th, 1891.

SPECIAL PRIZES—Continued.

- E. H. PORT & CO.—Farmers' Premium. Best Span Driving Horses, the property of exhibitors solely engaged in farming, and to be driven by farmers, or sons of farmers, engaged in farming—Walter A. Wood, American Tiger Horse Rake, value.....\$40.00.
- PETER BILODEAU—Ten lbs. Fresh Butter, in rolls or pats, (distinct from other entries).....\$5.00.
- GORDON & RAAB—Fattest Child, 6 months or under—Baby Carriage, value.....\$35.00.
- W. F. BEGGS—Most tasty, attractive, and neatly arranged exhibit of Honey, all to be the production of the exhibitor—Pair Pants made to order, value.....\$10.00.
- MCLEAN & MORRISON—Firkin of Butter, not less than 25 lbs. (distinct from other entries)—Chest of Tea, value.....\$10.00.
- T. J. TRAPP & CO.—Best exhibit of British Columbia manufactures distinct from other entries—One 1,200 lb. Guernev & Ware, Platform Scales, Government standard, value.....\$35.00.
- WINTEMUTE BROS—Collection stuffed birds—Bamboo Music Rack value.....\$10.00.

RESIDENCES TAKEN AT REASONABLE RATES.



In making entries of live stock the attention of exhibitors is drawn to the second paragraph on page 27.

Page 49, Division B—Under Draught Horses, rules re pedigree refer only to classes 13 to 18, inclusive. Under General Purpose (same page), pedigree struck out.

Page 55, Division D, rules re pedigree to read "in all classes."

THE
Young Men's Christian Association
 OF NEW WESTMINSTER,
 INTER-DENOMINATIONAL IN CHARACTER

— AND —

Seeks to Benefit Young Men Physically, Socially,
 Intellectually and Spiritually.

Any young man of moral character may become a member and be entitled to the following privileges for the small sum of \$5.00 per annum: Attractively furnished Parlor, Reading Room, Library, first-class Gymnasium (free instruction), Baths (the finest in the city), Evening Educational Classes.

AT DURING THE FAIR

Some member of the reception committee will be at the building from 9 to 10 A. M., and 7 to 10 P. M., to receive visitors.

A free Reading Room in connection. Present membership 350.

DEAL, LARGELY IN TIMBER LIMITS AND MINES.

AGENTS OF COMMERCIAL UNION ASSURANCE COMPANY, OF LONDON.

FOR
DRUGS

Patent • Medicines, • Sponges,
 Combs, • Brushes,

Or any article you may require in our line, we respectfully
 solicit your patronage.



MACPHERSON & THOMSON

The Leading Druggists,
 NEW WESTMINSTER.

BOOTS AND SHOES

Citizens of New Westmihster and Surrounding Dis-
 tricts will please remember, when wanting
 Footwear of any description, that

GORDON & CO.

Carry the Largest, Best and Cheapest Stock
 of Boots and Shoes in the District.

Look !
 Look !!
 Look !!!

FOR THE SIGN

Of the Buffalo,

Y.M.C.A. BLOCK,

New Westminster, B. C.



P. S. - Orders by mail will receive our prompt attention.

P. O. BOX 239.

TELEPHONE 1-3-3.

AGENTS OF COMMERCIAL UNION ASSURANCE COMPANY, OF LONDON.

Horses,
 d to be
 -Walter
 \$40.00.
 ts, (dis-
 \$5.00.
 -Baby
 \$35.00.
 exhibit
 r Pants
 \$10.00.
 25 lbs.
 \$10.00.
 Features
 e. Plat-
 \$35.00.
 ic Rack
 \$10.00.
 exhibi-
 rules re
 al Pur-
 s."

tion

ER

ially,

and be
 oo per
 7, first-
 city),

g from

350.

NES.

To Smokers ❖

IF YOU WANT
TO ENJOY
A GOOD
CIGAR

... ASK FOR THE ...

**British Lion,
Mainland,
Henry Lee.**

They are not only made of the CHOICEST TOBACCO, but they are of HOME MANUFACTURE, and should be patronized by all good citizens.

WM. TIETJEN, Proprietor,
HOLBROOK BUILDING, COLUMBIA STREET,
NEW WESTMINSTER, B. C.

MOTEL DOUGLAS

CENTRALLY LOCATED.

Corner Columbia and Mackenzie Streets,
NEW WESTMINSTER, B. C.

On the European Plan.

Restaurant Open Day and Night.

SAMPLE ROOMS FOR COMMERCIAL MEN.

A. J. TOLMIE,

TELEPHONE CALL 111.

PROPRIETOR.

S. T. Mackintosh & Co.

REAL ESTATE,

Insurance : and : Financial : Agents,

CONVEYANCERS AND NOTARIES PUBLIC.

Colonial Block, : : New Westminster, B. C.

FOR SALE:

Choice Business and Residential Property in the City and suburbs; Farming Lands, improved and unimproved, throughout the District; Timber Limits and Mining Claims.

COLLECTIONS MADE ↩

↩ LOANS NEGOTIATED

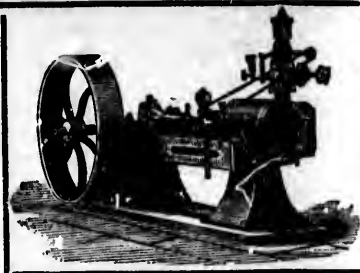
AGENTS FOR

NORTH BRITISH AND MERCANTILE FIRE INSURANCE COMPANY, of London and Edinburgh.

GUARDIAN ASSURANCE COMPANY, of London.

DOMINION BUILDING AND LOAN ASSOCIATION, of Toronto.

MANUFACTURERS' LIFE AND ACCIDENT INSURANCE COMPANY, of Toronto.



E. H. PORT & CO.,
Real Estate Brokers

AND MANUFACTURERS' AGENTS.

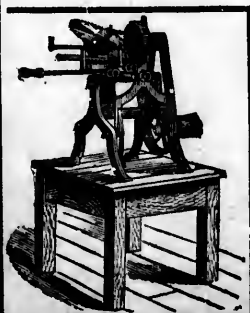
FIRE BRIGADE SUPPLIES.

Engine Boilers and Wood Working Machinery.

+ WALTER A. WOODS' +

→ Famous Binders, Mowers and Reapers. ←

GOLDIE & McCULLOUGH'S FIRE TESTED SAFES.



Cor. Columbia and
Begbie Streets,
NEW WESTMINSTER,
B. C.

y





ERS

CS.

inery.

ERS. ←

SAFES.



