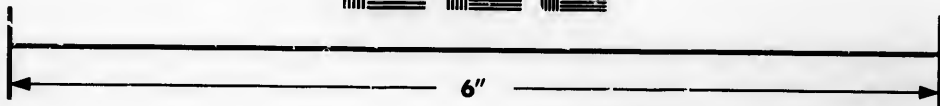
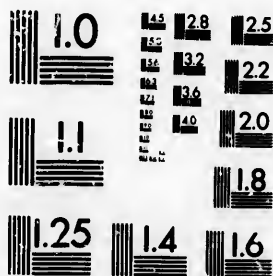


**IMAGE EVALUATION
TEST TARGET (MT-3)**



**Photographic
Sciences
Corporation**

23 WEST MAIN STREET
WEBSTER, N.Y. 14580
(716) 872-4503

1.8
2.0
2.2
2.5
2.8
3.2
3.6
4.0

**CIHM/ICMH
Microfiche
Series.**

**CIHM/ICMH
Collection de
microfiches.**



Canadian Institute for Historical Microreproductions / Institut canadien de microreproductions historiques

1.0
1.8
2.0
2.2
2.5
2.8
3.2
3.6
4.0

© 1983

Technical and Bibliographic Notes/Notes techniques et bibliographiques

The Institute has attempted to obtain the best original copy available for filming. Features of this copy which may be bibliographically unique, which may alter any of the images in the reproduction, or which may significantly change the usual method of filming, are checked below.

L'Institut a microfilmé le meilleur exemplaire qu'il lui a été possible de se procurer. Les détails de cet exemplaire qui sont peut-être uniques du point de vue bibliographique, qui peuvent modifier une image reproduite, ou qui peuvent exiger une modification dans la méthode normale de filmage sont indiqués ci-dessous.

- Coloured covers/
Couverture de couleur
- Covers damaged/
Couverture endommagée
- Covers restored and/or laminated/
Couverture restaurée et/ou pelliculée
- Cover title missing/
Le titre de couverture manque
- Coloured maps/
Cartes géographiques en couleur
- Coloured ink (i.e. other than blue or black)/
Encre de couleur (i.e. autre que bleue ou noire)
- Coloured plates and/or illustrations/
Planches et/ou illustrations en couleur
- Bound with other material/
Relié avec d'autres documents
- Tight binding may cause shadows or distortion along interior margin/
La reliure serrée peut causer de l'ombre ou de la distortion le long de la marge intérieure
- Blank leaves added during restoration may appear within the text. Whenever possible, these have been omitted from filming/
Il se peut que certaines pages blanches ajoutées lors d'une restauration apparaissent dans le texte, mais, lorsque cela était possible, ces pages n'ont pas été filmées.
- Additional comments:
Commentaires supplémentaires:

- Coloured pages/
Pages de couleur
- Pages damaged/
Pages endommagées
- Pages restored and/or laminated/
Pages restaurées et/ou pelliculées
- Pages discoloured, stained or foxed/
Pages décolorées, tachetées ou piquées
- Pages detached/
Pages détachées
- Showthrough/
Transparence
- Quality of print varies/
Qualité inégale de l'impression
- Includes supplementary material/
Comprend du matériel supplémentaire
- Only edition available/
Seule édition disponible
- Pages wholly or partially obscured by errata slips, tissues, etc., have been refilmed to ensure the best possible image/
Les pages totalement ou partiellement obscurcies par un feuillet d'errata, une pelure, etc., ont été filmées à nouveau de façon à obtenir la meilleure image possible.

This item is filmed at the reduction ratio checked below/
Ce document est filmé au taux de réduction indiqué ci-dessous.

10X	12X	14X	16X	18X	20X	22X	24X	26X	28X	30X	32X
						✓					

The copy filmed here has been reproduced thanks to the generosity of:

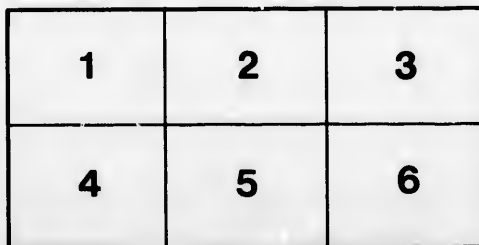
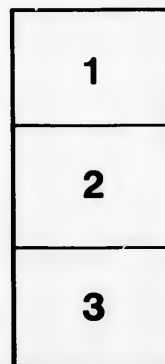
National Library of Canada

The images appearing here are the best quality possible considering the condition and legibility of the original copy and in keeping with the filming contract specifications.

Original copies in printed paper covers are filmed beginning with the front cover and ending on the last page with a printed or illustrated impression, or the back cover when appropriate. All other original copies are filmed beginning on the first page with a printed or illustrated impression, and ending on the last page with a printed or illustrated impression.

The last recorded frame on each microfiche shall contain the symbol \rightarrow (meaning "CONTINUED"), or the symbol ∇ (meaning "END"), whichever applies.

Maps, plates, charts, etc., may be filmed at different reduction ratios. Those too large to be entirely included in one exposure are filmed beginning in the upper left hand corner, left to right and top to bottom, as many frames as required. The following diagrams illustrate the method:



L'exemplaire filmé fut reproduit grâce à la générosité de:

Bibliothèque nationale du Canada

Les images suivantes ont été reproduites avec le plus grand soin, compte tenu de la condition et de la netteté de l'exemplaire filmé, et en conformité avec les conditions du contrat de filmage.

Les exemplaires originaux dont la couverture en papier est imprimée sont filmés en commençant par le premier plat et en terminant soit par la dernière page qui comporte une empreinte d'impression ou d'illustration, soit par le second plat, selon le cas. Tous les autres exemplaires originaux sont filmés en commençant par la première page qui comporte une empreinte d'impression ou d'illustration et en terminant par la dernière page qui comporte une telle empreinte.

Un des symboles suivants apparaîtra sur la dernière image de chaque microfiche, selon le cas: le symbole \rightarrow signifie "A SUIVRE", le symbole ∇ signifie "FIN".

Les cartes, planches, tableaux, etc., peuvent être filmés à des taux de réduction différents. Lorsque le document est trop grand pour être reproduit en un seul cliché, il est filmé à partir de l'angle supérieur gauche, de gauche à droite, et de haut en bas, en prenant le nombre d'images nécessaire. Les diagrammes suivants illustrent la méthode.

ails
du
diffler
une
nage

rata
o

elure,
à

John Bell

EASTERN TOWNSHIPS

MINERAL ASSOCIATION.

Exhibition of Minerals

Held at Sherbrooke, 18th January, 1865.

Descriptive Catalogue,

By CHARLES ROBB, Esq.,
MINING ENGINEER, MONTREAL.

PRINTED BY J. S. WALTON AT THE "GAZETTE" OFFICE.

J. Bell

Eastern Townships Mineral Association.

EXHIBITION OF MINERALS

Hold at Sherbrooke, 18th January, 1865.

DESCRIPTIVE CATALOGUE,

By CHARLES ROBB, Esq., MINING ENGINEER, MONTREAL.

INTRODUCTORY REMARKS.

It is highly gratifying to observe that our mining interests continue to attract unabated attention, notwithstanding the general stagnation of business throughout the Province. Apart from the ascertained facts and the success that has actually attended many of these adventures, the circumstance of their vigorous prosecution for so many years after the first mining excitement commenced in Lower Canada, affords reasonable grounds to infer their permanence and importance.

It is much to be regretted that both Canadian and English capitalists have hitherto manifested so little disposition to embark extensively in enterprises, at once so promising as investments, and so conducive to the best interests of the Province. In the meantime, we are mainly indebted to our neighbors on the other side of the line, who, with characteristic energy and enterprise, have invested largely in purchasing and working mines in Canada.—The recent extraordinary fluctuations in the money market in the United States, have induced a spirit of reckless speculation, unfavorable to the true mining interests of Canada; and it is extremely desirable on all accounts that their system of organizing mining companies should be amended, so as to include the element of real merit in the location selected.

The recent Mineral Exhibition at Sherbrooke, the centre of one of the most important copper mining districts in the country, and the labors of the Association by whom it was instituted, are calculated to afford much valuable information to intending purchasers of mining properties; and with the view of rendering it still further useful it has been deemed desirable to publish a short description of each of the mines represented by the specimens exhibited. We are sorry to observe that some of our most interesting mining districts, such as those of Acton, Leeds, Sutton, Brome, &c., were unrepresented; still enough was shewn to convince the most sceptical, of the extensive distribution and importance of our mines.

No. 1. VIGER COPPER MINE. Township of Chester, Lot No. 8,
Range 6. Exhibited by A. Michel, Esq., Manager.

Large blocks of quartz, charged with yellow sulphuret of copper of the richest quality. This property which is now being vigorously and systematically explored, under the able superintendence of Mr. Michel, affords excellent prospects for successful mining. It is traversed by several copper-bearing quartz veins in chloritic and micaceous schist, which, apart from the quartz veins, yields rich vitreous copper in considerable abundance; the total thickness of the metal bearing rocks is 170 feet. The principal vein, which is of great thickness, has been explored over a length of nearly half a mile by shode pits and costeaus, out of which considerable quantities of ore have been incidentally obtained, yielding an average of three per cent metallic copper throughout the mass of the vein. An adit level, for which the ground is highly favorable, is now being driven to cut all the veins at a depth of 125 feet from the surface. This mine is 15 miles distant from the Arthabaska Station of the G. T. Railway, by the Craig's Road.

No. 2. GRIFFITH MINE, Ascot, Lot No. 3, Range 11, John Griffith, Esq., Proprietor.

Large and fine specimens, (one weighing 506 lbs.) of yellow sulphuret of Copper in silicious slate rock. This mining location has been comparatively little explored, and has not been visited by the writer of these notes; but judging from the handsome specimens exhibited, it must be of great value. It is situated about six miles from the railway.

No. 3. CLARK MINE, Ascot, Lot II, Range 7, Eleazer Clark, Esq., & Co.

Large and handsome specimens of yellow sulphuret of Copper and Iron in silicious schist. Also specimens of the ore dressed to nine per cent, (one of the specimens exhibited weighs 500 lbs.) This mine which has been vigorously worked for upwards of a year by a powerful American Company, may be regarded as a highly successful undertaking. Several beds, or rather *embedded veins* of Copper-bearing rock have been explored on the property; these are of great thickness, in some cases exceeding twenty feet, and are sufficiently productive to justify mining operations on an extensive scale. The overbearing beds are enclosed within walls of a different character, on one side talcose and on the other chloritic slate; the average value of the ore as extracted from the mine may be estimated at $3\frac{1}{2}$ per cent. The work has been hitherto carried on by open cuts, and may be regarded as somewhat of an exploratory character, nevertheless a very large quantity of ore has been obtained, and the mine proved to be permanently productive. Quite recently crushing and dressing machinery has been put in successful operation. An average of about 60 hands

have
steu
road
from
This
No
Y
dres
copp
two
saw
er,
a he
T
with
the
stra
beds
larg
the
rich
that
abo
The
the
No

S
pur
iron
ly
of
stra
bee
sun
bee
we
roo
me
of
Be
ve
an
er
at

have been employed since April last, of whom twenty have been steadily mining; the remainder employed in building, making roads, and constructing machinery. It is situated about one mile from the railway and in the immediate vicinity of Sherbrooke.— This mine is under the able management of Captain Richards.

No 4. HAM COPPER MINE, HAM. Lot 28, Range 4, R. W. Hencker, Esq.

Yellow and variegated sulphurets of copper in dolomite; also dressed ore from the same mine, yielding 36.42 per cent. metallic copper. Here mining operations have been carried on upwards of two years, and a crushing mill, with dressing house and circular saw mill erected and put in operation, being driven by water-power, of which there is an abundant supply on the location, under a head of forty feet.

The band of dolomite is about 100 feet thick and is charged with copper ore for a thickness of thirty feet from its summit; the concentration of the ore seeming to be due to a twist in the stratification. Cupriferous quartz veins also occur cutting the beds, and yield very rich and handsome specimens of ore. A very large amount of excavation has been done at this mine to prove the nature and extent of the deposit, and several tons of very rich ore have been incidentally obtained. There can be little doubt that this mine will prove permanently valuable. It is situated about 19 miles from the Arthabaska Station of the G. T. Railway. There is an abundant supply also of valuable building timber on the property.

No. 5 BROMPTON GORE COPPER MINE, BROMPTON, Lots 28, 29, Range 9, G. R. Robertson, Esq.

Several large masses of purple and vitreous copper ore in impure or mixed serpentine, associated with magnetic and chromic iron. In this rich mineral district the rocks are singularly varied and in a condition highly favorable for the aggregation of metallic deposits, which occur both subordinate and cutting the stratification. At the mine in question, several of these veins have been opened upon, but the work hitherto has been confined to the surface, no regular or extensive mining operations having as yet been instituted. A vein of rich purple ore five feet thick, between well defined walls of serpentine, and cutting the direction of the rocks of the country, has been opened to some extent, and affords most excellent promise for successful mining. An average sample of the whole rock moved has been assayed by Dr. A. A. Hayes of Boston, and found to yield 15 per cent metallic copper. Other veins running with the stratification have been partially exposed, and all tend to shew the extreme richness of the location in mineral deposits. It is situated six miles from the Railway Station at Brompton.

No. 6. ORFORD MINE, ORFORD, Lots 8, 9, Range A, Messrs, Galt and Besette, Proprietors. Major Chas. King, Exhibitor.

Yellow sulphuret of copper in quartz gangue, associated with a bastard serpentine; rock of the country, diorite with diallage.— This mine is situated in the same mineral district, and in rocks of a similar character to those last described. Six veins occur within a breadth of twenty-five feet, cutting the rocks and seeming to converge in descending. Some of these are ten inches wide, and all are rich in copper ore. This mine has been considerably explored, and affords good promise. It is situated about 14 miles from Sherbrooke.

No. 7. SHERBROOKE MINE, ASCOT. Lot 12, Range 7. Eleazer Clark, Esq.

The copper mines in this rich mineral district are nearly all of the same general character. The ore consisting of combined iron and copper pyrites in embedded veins, in micaceous and chloritic slate; the ore being generally associated with silicious and calcareous matter. The concentration of the ore in these veins seems to be due to twists and dislocations of the rocks, both in a horizontal and vertical direction. The copper bearing rocks in Ascot occupy a breadth of $4\frac{1}{2}$ miles in a band running diagonally through the township in a north-easterly direction, and have produced many very valuable mines, of which the present is one of the most important. The work at the mine has hitherto been entirely of a preliminary or exploratory character, and has proved highly satisfactory,—the ore bed from which these fine specimens were obtained being eight feet in thickness, while several others are known to exist on the property. Situated only one mile from the railway.

No 8. BELVIDERE MINE, ASCOT. Lot 10, Range 9. Eleazer Clark, Esq., Proprietor.

These specimens are of similar character to the last, and the same general remarks will apply in regard to the location. The following is Sir William Logan's description of this mine, as given in his general report for 1863 :

* "Here there is a considerable breadth of fine white micaceous or nacreous slates, with which is interstratified a bed of greenish quartz or mica schist, this is in parts chlorite or talcose and con-

* E. Clark, Esq., has requested the Secretary to insert the following note : Since the Report here referred to, 70 feet additional excavation has been made following the dip of the bed and striking upon very rich ore throughout its thickness. The following is an assay :—

SAMPLE,	}	STATE ASSAYER'S OFFICE,
BELVIDERE MINE.		11 Boylston Street, Boston,
Result of Assay.—Sample of copper ore marked as in margin, received from		
E. Clark, Esq., contains 20 per cent of copper.		A. A. HAYES, M. D.
October 1, 1864.		State Assayer.

tains large quantities of a mixture of iron pyrites with yellow copper ore, the latter being irregularly distributed. A few tons of the rock have been removed from the bed by blasting. Select portions of this gave, when dressed, one-half the weight of ore, which contained one-third of siliceous matter and 7.3 per cent of copper, the remainder being iron and sulphur. The breadth of this bed which has an eastward dip of about 30° is not far from six feet, and it is estimated that it will yield two tons of dressed ore, similar to the above, to the fathom."

Although no regular mining operations have been commenced here, considerable work has been done since the date of Sir William Logan's remarks, and with the most favorable results. The mine is situated two and a half miles from the railway.

No. 10. BALRATH MINE, MELBOURNE. Lot 2, Range 4. Right Honorable Lord Aylmer.

Rich specimens of variegated copper ore in the quartz and calc-spar in chloritic and micaceous slate. Eight copper-bearing veins have been discovered and traced on this property; and on one of these considerable work has been done. This vein is persistent and well defined varying in thickness from two to four feet, and running conformably to the strike of the rocks. A shaft has been sunk on the vein upwards of 100 feet, and a drift or level about 50 feet. The ore which is of the richest character, is however, somewhat irregularly distributed; but there is reason to believe that when a greater depth is obtained, it will become more persistent. The property is situated little over one mile from the railway.

No. 11. KING MINE. Orford, Lot 3, Range 13.—Major Charles King.

Specimens of variegated Copper Ore, associated with magnetic oxide of iron in a mixture of dolomite and serpentine. This mining location is situated in the same remarkable mineral district as we have attempted to describe in noticing Nos. 3, 5 and 6. In the present case the vein which is about four feet thick, runs with the rocks, but possesses very well defined walls, and a vein stone differing from the rocks of the country, which consist of serpentine on the foot, and dolomite on the hanging wall. These specimens have been assayed and found to contain eight per cent of metallic copper. The manner of association of the iron and copper is unique and remarkable. It is also worthy of remark that it is precisely in rocks of this character that gold occurs when found in its native bed. This mining location abuts upon Brompton Lake, and is about eight miles from the Railway, and twelve miles, by water, to Richmond Station, G. T. Railway.

St. FRANCIS MINE.—Cleveland, Lot 25, Range 12—Exhibited by Thomas Mackie, Esq.

Very fine specimens of vitreous and purple Copper Ore, large

masses of which occur absolutely pure and free from gangue, testifying to the extraordinary richness of this mine. The vein is about three feet wide, being nearly perpendicular, cutting the rocks in depth, though coinciding in direction. Wall rock, a soft white limestone, saturated with green carbonate on one side, and chloritic schist on the other. The gangue of the vein is quartz and calc spar; and the enclosing rocks some times present an extraordinary combination of quartz and felspar, giving it the aspect of an amygdaloid trap, and assimilating the conditions to those usually accompanying true or fissure veins, to which this interesting deposit is on other grounds manifestly allied. This mine is now being vigorously worked under the able superintendence of Capt. Francis Bennett. A shaft has been sunk upwards of eighteen fathoms. An adit cuts it transversely at a depth of seven fathoms, and at ten fathoms deep levels have been driven on the course of the vein about ten fathoms in total extent. The shaft yields two tons of eight per cent ore per fathom, and one of the ends now produces an average of one ton and a half per fathom of forty per cent ore. The exhibitor also shows a box of ore from the mine dressed to thirty per cent. The most extraordinary variety of ores are found in this mine, few of the ores of copper being unrepresented, and native copper also occurring together with specular iron, manganese, &c. It is situated about three miles from the Richmond Station of the G. T. Railroad.

No. 13. **ELDORADO COPPER MINE.**—Ascot, Lot 3, Range 8. Exhibited by W. S. Hunter, Esq., for Capel, Hunter & Pierce.

Large blocks of Iron and Copper Pyrites, almost totally free from gangue, and containing about eight per cent metallic copper. This deposit has been only very recently discovered, and already bids fair to be one of the most important in this rich mining district, the general features of which have already been described. In the present case the ore-bearing bed or vein is at least six feet wide, and has been proved to extend at least five-eighths of a mile on the surface. We are unable to state the average metallic contents, but a large proportion of the mass consists of such pure and unmixed ore as the specimens exhibited, and from the large admixture of sulphuret of iron will probably smelt very readily.—This highly promising mining location is only about three quarters of a mile from the railway.

No. 14. A miscellaneous collection of ores and useful minerals from the neighborhood of Melbourne; lead ashes, including soap-stone and marble, exhibited by Mr. John N. Gee.

Nos. 15 & 16. **COLDSPRING MINE, MELBOURNE,** Lot 6, Range 2, exhibited by Thomas Mackie, Esq.

Magnetic iron ore and vitreous copper ore, from the same location, the former occurring in an extensive bed between quartz ore,

sandstone and slate, and the latter in a series of parallel embedded veins, extending over a breadth of 200 feet in chloritic slate. Considerable work has been done in exploring, but little actual mining has yet been carried on here. Three trial shafts have been sunk to considerable depths on the copper-bearing beds, and several costeens have been cut; all exhibiting the great mineral richness of the location, which may further be inferred from the fact that, apart from the quartz veins the ore is found impregnating the slate rock itself (dissociated from spar) in such proportions as would probably pay to mine. Such a band charged with vitreous ore gave to the assay of the writer seven per cent of metallic copper. This mine is about six miles from the railway at Richmond.

No. 17. MCKENZIE MINE, SHIPTON, Lot $\frac{2}{2}$, Range $\frac{7}{7}$, Thomas Mackie, Esq.

Specimens of purple ore or erubescite in dolomite limestone. — This lot has been only partially explored but is of good promise; many stones of rich copper ore being found on the surface, and a fair shew in the rock so far as yet examined. Two and a half miles from railroad.

No. 18. A cabinet collection of fine specimens of various ores and minerals from the Eastern Townships, &c., by Captain William Williams.

No. 19. A cabinet collection by Mr. Richard Long of Sherbrocke.

No. 20. SOUTH HAM ANTIMONY MINE, Lot 28, Range East Gosford Road, exhibited by R. Freeman, Esq.

Specimens of native antimony and sulphuret of antimony. — This mine has been worked for nearly a year, and with the most encouraging results. Six veins have been discovered on the property within a very limited area, some cutting and others running parallel with the rocks. The most important, which is a true vein 18 inches wide, cutting the rocks perpendicularly with good walls, shews a thickness of four inches of solid antimony ore and metal, producing when smelted 79 per cent pure metal. About 15 tons of the combined ore and metal have been obtained, most of it in large handsome blocks; three tons have been sent to England, and the result of this experimental sale has been so satisfactory, that the Company are now prosecuting the work of mining with considerable energy, twenty men being now employed, and preparations being made to dress and smelt the ore on the spot. — Thirty miles distant from railway.

No. 21. MARRINGTON MINE, ASCOT, Lot 6, Range 9, Captain Francis Bennett.

Specimens of rough and dressed copper ore. This mine was opened upon a thick bed or vein of mundic or bi-sulphuret of ore, shewing only slight traces of copper. It has, however, under the vigorous and judicious management of Capt. Bennett been tested

pretty extensively, and has verified his prediction and justified his expectations by proving to increase in a very marked manner in the yield of copper ore in proportion as the works are carried deeper. This is a most important fact, establishing the value of many veins in this district, which at the surface appear to yield only a little ore, though much iron ore. The mining operations have been conducted in a very systematic manner. The principal shaft is now nearly 40 fathoms in depth, the last ten fathoms having produced more or less copper ore, say 8 cwt. of 8 per cent ore to the fathom. The total linear extent of the drifts is about 47 fathoms. The vein is from two to three feet wide and is now everywhere producing good specimens of yellow sulphuret of copper with every encouragement to a continued prosecution of the work. The veins in this mine are affected by cross courses of amygdaloid trap and fluccan, or soft decomposed rock, which are always regarded by the miners as highly favorable indications. Situated four miles from the railway at Lennoxville.

No. 22. GOLCONDA MINES, ASCOT. Lots 2 & 3. Range 13, W. S. Hunter, Esq.

A phial containing about ten ounces of gold, value \$180. These specimens are taken from alluvial washings, but are so sharp and angular as to prove that their native bed is in the immediate neighborhood. Mr. Hunter states that during the time he worked them last year the yield was six dollars per day per man, and that a panful of dirt would frequently yield two dollars worth of gold. The quartz veins in the property contain gold to the value of \$16 per ton, and preparations are being made to erect quartz crushing machinery. The mines are situated on the Grass Island Brook, a tributary of the Magog river, about twelve miles from Sherbrooke.

No. 23. GILBERT RIVER, a tributary of the Chaudière. Mr. John N. Gee, Exhibitor.

Two nuggets from the far-famed Chaudière gold region, which maintains its reputation for productiveness and continues to attract both individuals and Joint Stock Companies. In addition to the alluvial diggings it is probable that quartz crushing operations will shortly be instituted.

No. 24. MELBOURNE SLATE QUARRY. Lots 21 & 22. Range 6, Thomas Mackie, Esq.

Very fine specimens of roofing slate; one being five feet long by eighteen inches wide, and very perfect in every respect. This quarry has been in successful and profitable operation for the last three or four years, and is capable of supplying an almost unlimited amount of the very best roofing slate; the band being stated by Sir William Logan to be not less than one-third of a mile wide and 400 feet from the present workings to the drainage level at the

River St. Francis. The quarry is a mile and a half from the railway.

No. 25. SHIPTON SLATE QUARRY. Part of S. W. 1-2 of Lot No. 7 in 4th Range, Shipton. John N. Gee, Proprietor.

These are surface specimens from a newly discovered slate quarry, occurring in the same band of slate as the Melbourne Quarry, and partaking of the same excellent character. One of the specimens exhibited is three feet by eighteen inches. Situated three miles from Danville Station.

No. 26. LAKE JOSEPH COPPER MINE. Halifax, Lot 7, Range 11. A. G. Woodward, Esq., Exhibitor.

Fine specimens of Copper Ore in dolomite. The location has been only slightly explored, and details unknown to the writer. The ore bearing vein is stated to be three feet wide, and the specimens are certainly very encouraging.

No. 27. GALT MINE. Orford, Lots 5 to 9, Range E & F. Exhibited by Capt. Wm. Williams.

This mine, which has been tested to a considerable extent by exploratory works, is of the same character, and in rocks of the same description as we have specified under No. 6, the location being contiguous. The prospects of successful mining here are highly flattering.

No. 28. Unexplored Lot in Ascot. Lot No. 4, Range 11. A. G. Woodward, Esq., proprietor.

Being merely surface specimens we have nothing to remark upon them, but for the nature and probable value of the location, would refer to our previous descriptions of the adjacent mines in Ascot.

No. 29. GOLD BEARING QUARTZ, from New Ireland. Exhibited by A. G. Woodward, Esq.

No analysis of this rock having been produced, we are unable to state whether it contains a workable proportion of gold.

No. 30. OWL'S HEAD LEAD MINE. Potton, Lot 7, Range 11. W. S. Hunter, Esq., Exhibitor.

Specimens of Argentiferous Galena, containing 9 ounces of silver to the ton of lead. This mine, which is situated on the Western shore of Lake Memphremagog, has been developed to a considerable extent, the ore occurring in a quartz vein ten feet wide; the Galena however, being confined to a small portion of this width from which fine specimens of solid ore two or three inches in thickness have been extracted.

No. 31. CHROMIC IRON from Melbourne Slate Quarry.

A vein of this material, which is valuable as the base of many beautiful pigments and dye-stuffs, has been traced in the slate quar-

ry property in serpentine, but although a few barrels full of the ore have been extracted from the surface, it cannot be said to be sufficiently explored to enable us to state definitely its extent and value. The ore is, however, of the very best quality, yielding 53 per cent sesqui-oxide of chromium, equal to 69.6 per cent of chromic-acid.

No. 32. CARBUNCLE HILL MINE. Orford, Lots 2 & 3, Range 15.
A. A. Adams & Co.

Yellow sulphuret of copper in diorite. This vein is situated in the centre of that remarkable mineral region in Orford which has already been described under Nos. 5, 6 and 11. The veins occur on the face of a high bluff fronting on Brompton Lake, and are both of the embedded and transverse kind. Several small openings have been made on these veins, and about 12 tons of 15 per cent ore extracted. The principal vein, which is a true one, is about five feet in thickness, and shows bunches of extraordinary extent and richness at various points. The nature of the ground is highly favorable for mining. Between eight and nine miles to Brompton station.

The following are additions to the above Report, made by the Secretary :

No. 33. N. A. BISSETT MINE. Lot No. 2, Range 4. Stukely, omitted to be reported on by Mr. Robb. Maj. C. King, Exhibitor.

Surface specimens of purple and gray ore of Copper, looking very well. One mile from Shefford and Chambly Railroad.

Specimens of the mines in this Catalogue were kindly left by the Exhibitors to form the nucleus of a Museum, which can be seen on application to the undersigned Secretary, at Sherbrooke.

G. F. BOWEN,
SECRETARY.

he
be
nd
53
ro-

5.

in
us
ur
re
n-
er
is
ry
is
to

he

it-

ry

ne
n



COMMITTEE OF MANAGEMENT

FOR THE YEAR 1865.

R. W. HENEKER, Esq., Com. B. A. Land Company,
PRESIDENT.
J. G. ROBERTSON, Esq., Mayor of Sherbrooke.
ELEAZER CLARK, Esq., J. P.
MAJOR CHARLES KING, Brigade Major.
JOHN GRIFFITH, Esq., J. P.
THOS. MACKIE, Esq., J. P.
G. R. ROBERTSON, Esq., Advocate.
R. FREEMAN, Esq., Editor of Freeman.
THOS. SMYTHIE, Esq.
PATRICK ANDERSON, Esq.
CAPTAIN BRUYERES.
G. F. BOWEN, Esq., Sheriff, SECRETARY.

