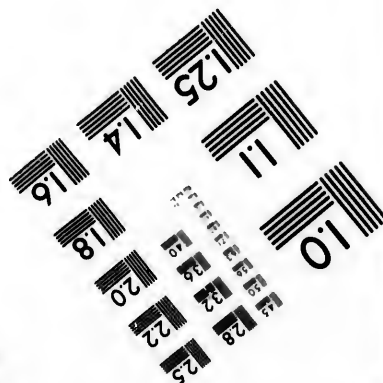
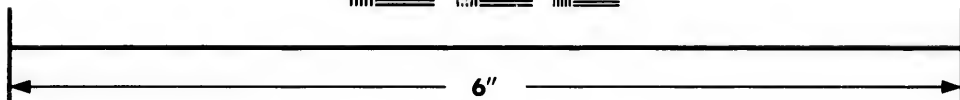
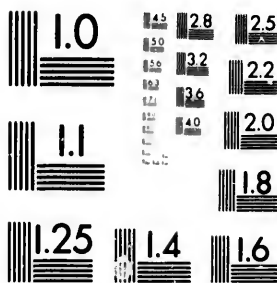


**IMAGE EVALUATION
TEST TARGET (MT-3)**



**Photographic
Sciences
Corporation**

23 WEST MAIN STREET
WEBSTER, N.Y. 14580
(716) 872-4503

**CIHM/ICMH
Microfiche
Series.**

**CIHM/ICMH
Collection de
microfiches.**



Canadian Institute for Historical Microreproductions

Institut canadien de microreproductions historiques

1980

Technical and Bibliographic Notes/Notes techniques et bibliographiques

The Institute has attempted to obtain the best original copy available for filming. Features of this copy which may be bibliographically unique, which may alter any of the images in the reproduction, or which may significantly change the usual method of filming, are checked below.

L'Institut a microfilmé le meilleur exemplaire qu'il lui a été possible de se procurer. Les détails de cet exemplaire qui sont peut-être uniques du point de vue bibliographique, qui peuvent modifier une image reproduite, ou qui peuvent exiger une modification dans la méthode normale de filmage sont indiqués ci-dessous.

- Coloured covers/
Couverture de couleur
- Covers damaged/
Couverture endommagée
- Covers restored and/or laminated/
Couverture restaurée et/ou pelliculée
- Cover title missing/
Le titre de couverture manque
- Coloured maps/
Cartes géographiques en couleur
- Coloured ink (i.e. other than blue or black)/
Encre de couleur (i.e. autre que bleue ou noire)
- Coloured plates and/or illustrations/
Planches et/ou illustrations en couleur
- Bound with other material/
Relié avec d'autres documents
- Tight binding may cause shadows or distortion along interior margin/
La reliure serrée peut causer de l'ombre ou de la distortion le long de la marge intérieure
- Blank leaves added during restoration may appear within the text. Whenever possible, these have been omitted from filming/
Il se peut que certaines pages blanches ajoutées lors d'une restauration apparaissent dans le texte, mais, lorsque cela était possible, ces pages n'ont pas été filmées.
- Additional comments:
Commentaires supplémentaires:

- Coloured pages/
Pages de couleur
- Pages damaged/
Pages endommagées
- Pages restored and/or laminated/
Pages restaurées et/ou pelliculées
- Pages discoloured, stained or foxed/
Pages décolorées, tachetées ou piquées
- Pages detached/
Pages détachées
- Showthrough/
Transparence
- Quality of print varies/
Qualité inégale de l'impression
- Includes supplementary material/
Comprend du matériel supplémentaire
- Only edition available/
Seule édition disponible
- Pages wholly or partially obscured by errata slips, tissues, etc., have been refilmed to ensure the best possible image/
Les pages totalement ou partiellement obscurcies par un feuillet d'errata, une pelure, etc., ont été filmées à nouveau de façon à obtenir la meilleure image possible.

This item is filmed at the reduction ratio checked below/
Ce document est filmé au taux de réduction indiqué ci-dessous.

10X	14X	18X	22X	26X	30X
<input type="checkbox"/>	<input type="checkbox"/>	<input type="checkbox"/>	<input type="checkbox"/>	<input checked="" type="checkbox"/>	<input type="checkbox"/>
12X	16X	20X	24X	28X	32X

The copy filmed here has been reproduced thanks to the generosity of:

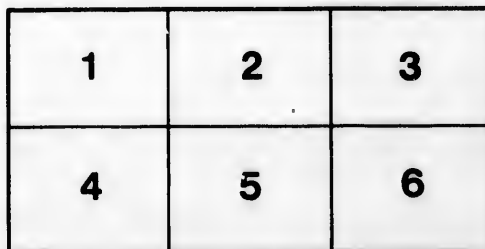
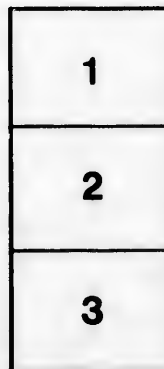
Thomas Fisher Rare Book Library,
University of Toronto Library

The images appearing here are the best quality possible considering the condition and legibility of the original copy and in keeping with the filming contract specifications.

Original copies in printed paper covers are filmed beginning with the front cover and ending on the last page with a printed or illustrated impression, or the back cover when appropriate. All other original copies are filmed beginning on the first page with a printed or illustrated impression, and ending on the last page with a printed or illustrated impression.

The last recorded frame on each microfiche shall contain the symbol \rightarrow (meaning "CONTINUED"), or the symbol ∇ (meaning "END"), whichever applies.

Maps, plates, charts, etc., may be filmed at different reduction ratios. Those too large to be entirely included in one exposure are filmed beginning in the upper left hand corner, left to right and top to bottom, as many frames as required. The following diagrams illustrate the method:



L'exemplaire filmé fut reproduit grâce à la générosité de:

Thomas Fisher Rare Book Library,
University of Toronto Library

Les images suivantes ont été reproduites avec le plus grand soin, compte tenu de la condition et de la netteté de l'exemplaire filmé, et en conformité avec les conditions du contrat de filmage.

Les exemplaires originaux dont la couverture en papier est imprimée sont filmés en commençant par le premier plat et en terminant soit par la dernière page qui comporte une empreinte d'impression ou d'illustration, soit par le second plat, selon le cas. Tous les autres exemplaires originaux sont filmés en commençant par la première page qui comporte une empreinte d'impression ou d'illustration et en terminant par la dernière page qui comporte une telle empreinte.

Un des symboles suivants apparaîtra sur la dernière image de chaque microfiche, selon le cas: le symbole \rightarrow signifie "A SUIVRE", le symbole ∇ signifie "FIN".

Les cartes, planches, tableaux, etc., peuvent être filmés à des taux de réduction différents. Lorsque le document est trop grand pour être reproduit en un seul cliché, il est filmé à partir de l'angle supérieur gauche, de gauche à droite, et de haut en bas, en prenant le nombre d'images nécessaire. Les diagrammes suivants illustrent la méthode.

tails
du
odifier
une
image

rrata
to

pelure,
on à



DESCENT.

Mr. Howard is a scion of one of the most illustrious families in the United Kingdom, being descended from the Most Noble Lord William Howard, of Naworth Castle, in the County of Cumberland, the "Belted Will" of Sir Walter Scott's well-known poem.

By the *Inquisitio Post Mortem*, held at Carlisle on the 22nd of April, 10th Ch. 1., 1640, before William Penington, Esq., John Dalton, Esq., and Cuthbert Orfeur, Gent., Feodaries of the King and Sir William Dalston, Knt. and Bart, Commissioners to enquire respecting the death of the Most Noble Lord William Howard, the jurors on their oath presented as follows :—" That, on the 9th of October, in the 16th year of the present King, the said Lord William Howard died at Naworth, in the County of Cumberland : That the Lady Elizabeth, his wife, died whilst he was living : That William, the eldest son of Philip, and heir to Lord William, was at the time of Lord William's death of full age, viz., 38 years of age : And that on the 28th of January last past, before the taking of this inquisition, he died ; and that his wife Maria died during the lifetime of Lord William, leaving four sons, viz., Charles, Philip, Thomas, and John, and five daughters, viz., Marie, Elizabeth, Catherine, Frances, and Margaret Howard ; and that Philip Howard, the younger son of Philip Howard, was then living." John Howard, the youngest grandson of Lord William, was the direct ancestor of John G. Howard. Being dissatisfied with the arrangement of his father's property he left Corby Castle and went to the Flemish town of Tournay, where he ingratiated himself with the king, who gave him for a coat-of-arms a double-headed raven, with the motto, *mens cœscia recti*. John, while on the Continent, adopted the doctrines of the Muggletonians. The foregoing details are gathered from a work in Mr. Howard's possession, entitled " Selections from the Household Books of the Lord William Howard, of Naworth Castle."



CATALOGUE
OF
PAINTINGS IN THE GALLERY AT COLBORNE LODGE,
HIGH PARK;

A DONATION FROM JOHN G. HOWARD, ESQ. J. P.
TO THE CORPORATION OF THE CITY OF TORONTO,

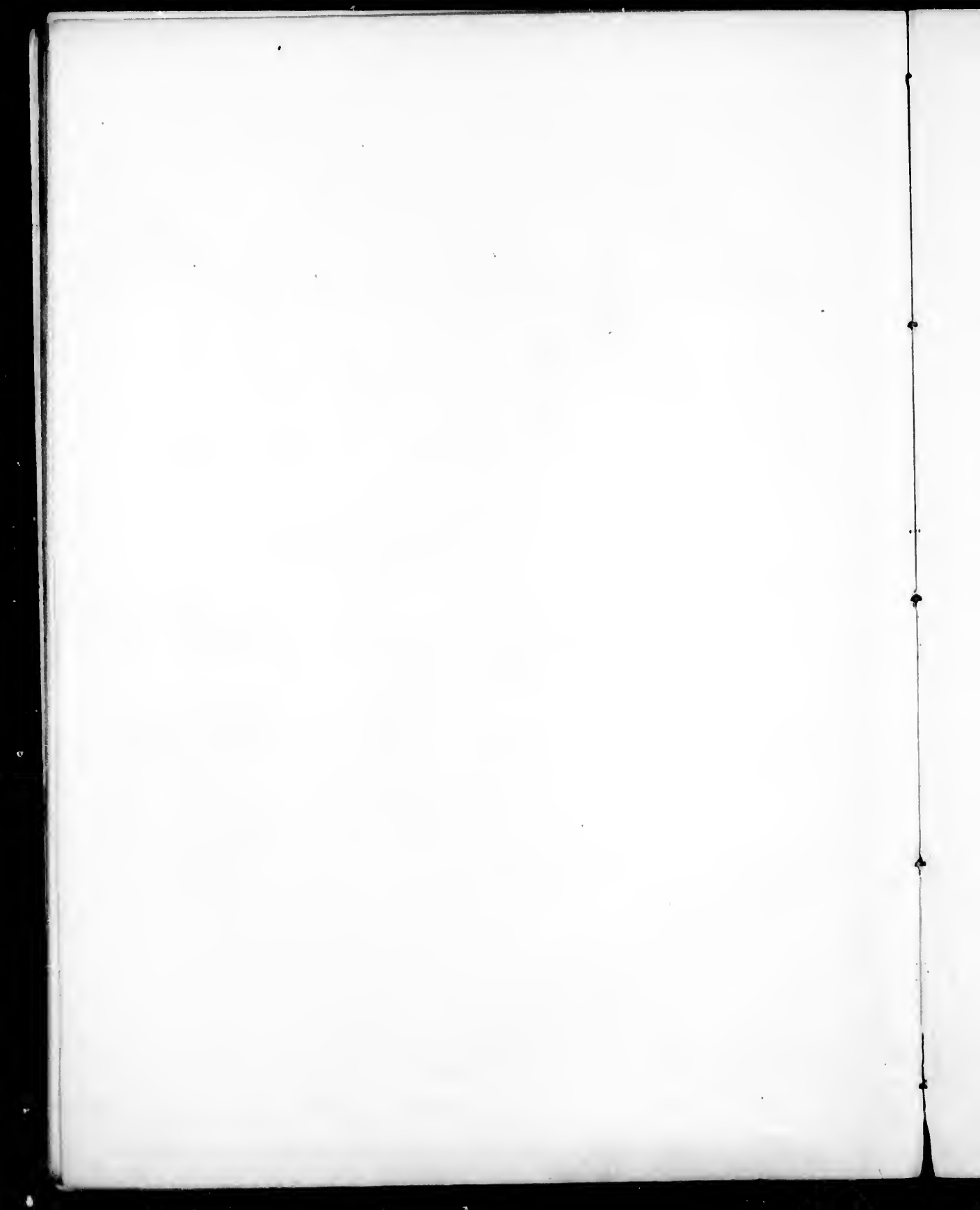
MAY 7TH, 1881.

THE WHOLE OF THE PICTURES WERE PAINTED BY MR. & MRS. J. G. HOWARD.



JOHN G. HOWARD WAS DRAWING MASTER TO UPPER CANADA COLLEGE FOR TWENTY-THREE
YEARS, FROM THE FIRST OF APRIL, 1833, TO 1856, INCLUSIVE.

TORONTO:
PRINTED BY COPP, CLARK & CO., 67 & 69 COLBORNE STREET.
1885.



STEEL ENGRAVING
PORTRAIT OF JOHN G. HOWARD.

BORN 27th JULY, 1803,

And served as Articled Clerk for three years in the office of Messrs. Ford & Paterson, Architects and Civil Engineers, Commercial Sale Rooms, London.

On the 26th June, 1832, left England for Canada on board the bark "Emperor Alexander," Captain Boig, Commander. Arrived at York (now Toronto), on the 14th Sept., 1832, just 11 weeks and 3 days from London, England.

In February and March, 1833, in competition with six other gentlemen for the Drawing Mastership of Upper Canada College, Mr. Howard gained the appointment and entered upon the duties the 1st of April, 1833, and filled the chair for 23 years.

In 1834 the first Artists' Society was formed in Toronto, and the first Exhibition of Pictures took place in the Parliament Buildings under the patronage of Sir John Colborne, K.C.B., Lieutenant-Governor of Upper Canada. Vice-Patron, the Honourable and Venerable John Strachan, D.D., Archdeacon of York, &c. &c. &c.

President:

CAPTAIN BONNYCASTLE, R. E., Member of the Geographical Society of France, and of the Philosophical and Literary Societies, Quebec, Toronto and Montreal.

Committee:

MR. CASTLE.
MR. GILBERT.
MR. HAMILTON.
MR. HOWARD.
MR. LAING.
MR. LENNEN.

Honorary Secretary—CHARLES DALY.

Associated Artists:

CAPT. BONNYCASTLE, R. E.	MR. HAMILTON.	MR. OVEREND.
MR. CASTLE.	MR. HOWARD.	MR. POPPLEWELL.
MR. CRAIG.	LIEUT. JONES.	MR. STEERS.
MR. DALY.	MR. KANE.	MR. TAZEWELL.
MR. FOTHERGILL.	MR. LAING.	MR. S. B. WAUGH.
MR. GILBERT.	MR. LENNEN.	

TORONTO SOCIETY OF ARTS IN 1847 & 1848.

Patrons.

His Excellency the Right Honourable EARL OF ELGIN AND KINCARDINE, Governor-General of British North America, &c. &c. &c.
 The Honourable and Right Reverend JOHN STRACHAN, D. D., Lord Bishop of Toronto, &c. &c. &c.
 The Right Reverend MICHAEL POWER, Roman Catholic Bishop of Toronto, &c. &c. &c.
 The Honourable J. B. ROBINSON, Chief Justice.
 The Rev. JOHN MCCAUL, LL.D., Vice-President University of King's College, Toronto.
 The Hon. R. JAMESON, Vice-Chancellor.
 W. H. BOULTON, ESQ., M.P.P., Mayor of Toronto.

President—WILLIAM THOMAS, Esquire.

Vice-President—JOHN G. HOWARD, Esquire.

Committee.

THOMAS YOUNG.
 PETER MARCH.

EDWARD MCGREGOR.
 THOMAS H. STEVENSON.

Treasurer—JOHN G. HOWARD.

Secretary—E. C. BULL.

Members.

HOPPNER MEYER.
 C. HYDE.
 JOHN CRAIG.

THOMAS WHEELER.
 M. HARRISON.
 T. A. SAUNDERS.
 JACOB HAUER.

MR. ELLIS.
 JOHN JOHNSTON.
 F. G. LOWE.

Honorary—W. ANTROBUS HOLWELL, Esquire.

The Second and Third Exhibitions of Pictures were held in the old City Hall, in April and May, 1847 and 1848, by the members of the Toronto Society of Arts.

THE FOURTH EXHIBITION OF PICTURES BY THE ARTISTS' SOCIETY IN TORONTO, WHICH WAS INSTITUTED IN 1872.

Patrons.

His Excellency the MARQUIS OF LORNE, and Her Royal Highness the PRINCESS LOUISE.

Honorary Patrons.

The EARL OF DUFFERIN and the Honourable JOHN BEVERLEY ROBINSON,
 Lieutenant-Governor of Ontario.

President—HON. G. W. ALLAN.

Vice-President and Treasurer—W. REVELL.

Secretary—J. JARDINE.

In 1883 His Excellency the Marquis of Lorne, with the advice of L. R. O'Brien, President and Council, conferred the title of Royal Canadian Academician upon John G. Howard, Architect.

PICTURES IN THE DRAWING ROOM.

Two Portraits of Mr. and Mrs. Howard, 1848, by Thos. H. Stevenson. James Meikle, Esq., Mrs. Howard's father, by Heppner Meyer. Two Portraits in Oil (life size) of John G. Howard and Wife, by Bridgman in 1874.

Two Portraits of Mr. and Mrs. Howard, by Gagen & Fraser. Portraits in Oil of Lord Seaton, formerly Sir John Colborne, Lieut.-Governor of Upper Canada, by Berthon. Portrait in Oil, by the same Artist, of John G. Howard in his 80th year, wearing the old cloak he had worn for 51 years.

The Members of the Corporation of the City of Toronto paid Mr. Howard a visit on the 27th July, 1883, his birthday, and presented him with an Illuminated Address in a Gilt Frame.

Three very handsome Photographs of the Parliament Buildings, Ottawa, by Thos. Fuller, Esq., Architect. Two Photographs of John G. Howard, life size—one a profile, by Matthews.

1.—Three Photographs taken from pictures painted by Mr. Howard in 1834, from Camera-lucida sketches, and presented to the City of Toronto. One from the corner York Street, looking East, down King Street, shewing the British Coffee House and Chewett's Buildings, where the Rossin House now stands.

2.—The Old Gaol, Fireman's Hall, built by Mr. J. G. Howard, on Church Street, in 1835. The Stocks. The Court House. The Old Stone Cathedral, built in 1831, 1832, and the inside fittings in 1833, by John Ritchey, Builder.

3.—The Parliament Buildings and Emigrants Sheds in 1834. A South view of Colborne Lodge, High Park, from the Lawn.

A North view of Mrs. Howard's Tomb, shewing the Old Iron Railing which surrounded St. Paul's Cathedral, London, for one hundred and sixty years.

A fine Engraving of the death of Nelson at the Battle of Trafalgar.

A fine Engraving, Wellington and Blucher meeting after the Battle of Waterloo.

A Marine Painting, by Cresswell.

A very handsome Sketch, J. S. Crocker.

A Study of Lilacs, by Miss C. Gagen.

A Portfolio of Camera-lucida sketches of various parts of High Park and the Grenadier's Pond.

Also a model of High Park, carved in Wood, from an actual Instrumental Survey, by Mr. Howard.

LIST OF PAINTINGS IN THE GALLERY.

1.—Design for a Monument to the Memory of General Sir Isaac Brock.—This design was made in 1840, immediately after the demolition of the old Monument. The lower pedestal is surrounded by Grecian Doric columns of sturdy dimensions, supporting a stone terrace eight feet high from the ground, surrounded by a balustrade from which a fine view would be obtained of the surrounding country, upon which is erected the solid piers that support the Catenarian Arch which supports the obelisk, and is concealed by the upper blocking and archivaults. The equestrian figure of Sir Isaac Brock is in the act of pointing out the enemy to his gallant 43rd. In the angles of each of the upper pedestals is a soldier in the attitude of a mourner, with reversed arms. The estimated cost of erecting would be from ten to fifteen thousand pounds.

2.—Design for a University.—This plan for King's College, Toronto, was drawn in 1835, and presented to Sir John Colborne, Governor-General. This design, with a few alterations, gained the premium of £50, in competition for Queen's College, to be erected at Kingston in 1842.

3.—Design for filling up the space between the Old Gaol and Court House on King St.—This design was made in 1834, and was intended for a Guildhall, Court House, Post Office, Public Library, Merchants' Exchange, &c., &c., &c. The Old Gaol and Court House were to have been converted into the City and District Gaols, Police Office and temporary Lock-up Room. Estimated cost, £60,000.

4.—Design for a Government House in Toronto.—This design was made in 1833 for the information of Sir John Colborne, Governor-General, and to shew the impropriety of expending money in repairing the old Government House. The site was on the military reserve to the west of Peter Street on Front Street. Cost of erection estimated at £50,000.

5.—A Dutch Galiot becalmed.

6.—Design for a Gothic Chapel.—This design was made for the Hon. John Elmsley in 1834, to be erected in front of his cottage at Clover Hill, on the west side of Yonge Street. Estimated cost, £12,800. The landscape from nature.

7.—The Ocean Race, 1867; Henrietta, Vesta and Fleetwing. The Vesta had two men washed overboard. The Fleetwing had four men washed overboard. Gordon Bennett, in the Henrietta, gained the race without any loss.

8.—A design for a church in the Grecian style of Architecture.—This design was made in 1826, by Mr. Howard, in London, England.

9.—Eagle's nest, from a drawing by Landseer.

10.—Wind against Tide, Tilbury Fort in the distance, after a drawing by Stanfield, R.A.

11.—Bastille in Paris, liberating the Prisoners.—This drawing was made from a print in 1832.

12.—Brockville Gaol and Court House.—Erected from drawing made and superintended by John G. Howard, architect.

13.—Views of Lago Maggiore, from a drawing by Rowbotham.

14.—The Falls of the Stabah, Switzerland.

15.—Design for a Theatre.—This design was made in 1827 by J. G. Howard in London. The estimate cost, £1,000,000, providing all the sculpture was introduced; only the centre half is shown. The Dome is 200 feet high. Two Temples, dedicated to Shakespeare and Milton stand out on the right and left of the South Facade.

16.—North View of the Provincial Lunatic Asylum; competition design; premium, £30 erected under the superintendency of Mr. Howard, 1844.

17.—Sunset in the Islands of Scotland.

18.—North view of Mrs. Howard's Tomb, as seen from the carriage drive to the house across the ravine.

19.—A Cottage in Wales.

20.—Connemara, in Ireland.

21.—A Greek Temple, from a drawing made on the spot by Samuel Paterson, R.A.

- 22.—The Reservoirs at Liverpool, England, from a drawing lent by Charles Fuller, Esq.
 23.—Fairy Glen, North Wales, from a drawing by Harlow White.
 24.—The *Dejeuner* at U. C. College at the laying of the Corner Stone of the Grecian Building in the Queen's Park.
 25.—View of the Lago Maggiore, after drawing by Rowbotham.
 26.—Tul. Y. Lynn, a View in Wales.
 27.—Entrance Gate to Colborne Lodge, in 1870, now High Park.
 28.—Toronto Bay, the Parliament Buildings and the Old Commissariat Wharf, in 1835.
 29.—Toronto Bay from Brown's Wharf, with the Peninsula and Lighthouse, in 1835.
 30.—Old Rocks in Germany.
 31.—Alone on the Ocean, from an oil painting by Briscoe, Phil., U. S.
 32.—St. Peter's at Rome, with the Prisons of the Inquisition and convex side of the Colonnade, from a drawing made on the spot, by Samuel Paterson, Esq., Architect, Royal Academy, partner of William Ford, Esq., Architect, Commercial Sale Rooms, London, where Mr. Howard served his time as Architect and Civil Engineer in 1825, 1826 and 1827.

33.—The North View of the Tomb erected on the reserved portion of High Park, Toronto, by Mr. John G. Howard, architect, in memory of his beloved wife, and in readiness for himself. The Cairn is constructed with granite boulders. Mrs. Howard was a Scotch lady, which accounts for the Cairn. Mr. Howard himself is a Masonic Knight Templar, therefore the double pedestal terminating with the Maltese Cross. The consecrated ground on which it stands is enclosed with some of the old iron railing which surrounded St. Paul's Cathedral, London, England, for 160 years. The cost of erecting the Tomb, including vault and iron railing, amounted to \$3,150. The granite boulders are all bedded in Portland cement against a brick shaft in the centre which supports the marble pedestal. This weighs over ten tons, and came from the Rutland Quarries, Vermont, U. S. Engraved on a brass plate, and fixed on one of the gate posts of the old iron railing is the following inscription:—"Sacred to the Memory of John George Howard and Jemima Frances, his wife; John George, born 27th July, 1803; Jemima Frances, born 18th August, 1802, died 1st September, 1877, aged 75 years." On a brass plate fixed round the other iron gate post:

St. Paul's Cathedral for 160 years I did enclose,
 Oh! stranger look with reverence;
 Man! man! unstable man!
 It was thou who caused the severance.

Nov. 18th, 1875, J. G. H.

The vicissitudes of the railing are curious. After its removal from St. Paul's it was purchased by Mr. Robert Mountcastle, Waverley Place, St. John's Wood, London, of Mr. J. B. Hogarth, iron merchant, London, and shipped by him in good condition on board the steamship *Delta* for Toronto, on the 14th October, 1874. The *Delta* went on shore about five miles from Cape Chat Light, on the 8th November. A portion of the railing was recovered from the wreck, and sent to Montreal by the salvage men in the spring of 1875, in a very mutilated state, but was brought from Montreal by Mr. Howard on the 17th August in that year, and arrived in Toronto on the 21st of the same month. It was repaired by Messrs. William Hamilton & Son, at the St. Lawrence Foundry, Toronto, and finally fixed on the stone curb where it now stands on the 18th of November, 1875.

- 34.—Choosing the Wedding Gown—from an Art Union picture by Mulready.
 35.—Signal Station—from a drawing by Robert Gagen.
 36.—Wild Beast Moor—from a drawing by Mrs. Cope.
 37.—The Entrance Gate to Colborne Lodge. —
 38.—South View of Mrs. Howard's Tomb within the iron railing. See No. 33. }
 39.—Launching the Life Boat.
 40.—St. Winfrau, Abbeville—from a drawing made on the spot, by T. L. Wood.

41.—The Battle of Trafalgar, 21st October, 1805. The foremost ship, the *Victory*, 110 guns, Admiral Nelson, and Captain Hardy. Nelson was shot through the left shoulder about 1 o'clock by a rifleman on the mizen top of the *Redoubtable*. He expired at thirty minutes after 4 p.m., three hours and a quarter after he had received his wound; but he lived until a complete victory had been obtained. The rifleman who shot him did not live to brag of his exploit. He was shot by two midshipmen, one ball through his head and another through his breast.

42.—Cathedral, Huy, Belgium, T. L. Wood.

43.—Early Autumn on Esopus Creek, Kingston, N. Y.

44.—Toronto Bay (in 1835), from Taylor's Wharf, with Dr. Widmer's Cottage and Gooderham's Wind-Mill in the distance.

45.—Provincial Lunatic Asylum, south-east view, built by J. G. Howard, architect. See Corner Stone.

THIS CORNER STONE

*Of the first Building erected in Western Canada for the reception of
INSANE AND LUNATIC PERSONS,*

UNDER THE DIRECTION AND SUPERINTENDENCE OF

The Honourable Robert Sympson Jameson, Vice-Chancellor,

Hamilton Hartley Killaly, Esq.

Henry Sherwood, Esq., Q.C., M.P.P.

The Honourable Christopher Widmer, Surgeon.

John King, M.D., Professor of Medicine, University of K. C., Toronto.

John Ewart, Esq.

James Grant Chewell, Esq.

William Henry Boulton, Esq., M.P.P., Mayor of the City of Toronto.

William R. Beaumont, Esq., F.R.C.S.E., Professor of Surgery, University of K.C., Toronto.

William Botsford Jarvis, Esq., Sheriff of the Home District.

Commissioners appointed for that purpose by His Excellency, the Right Honourable

CHARLES THEOPHILUS BARON METCALFE,

Then Governor-General of the Province.

Under the provisions of an Act of the Legislature of the Province of Upper Canada, passed in the second year of the reign of Her Most Gracious Majesty

QUEEN VICTORIA,

WAS LAID BY

The Honourable John Beverley Robinson, Chief Justice of the Province of Upper Canada,

In the presence of the Clergy,

The Judges and Bar of the Province,

The Members of the Medical Profession,

The Mayor and Corporation of the City of Toronto,

The Sheriff, Magistrates, Warden and Municipal Council of the Home District,

The National Societies of St. George, St. Andrew, and St. Patrick,

The Old Fellows' Society, the Volunteer Fire Companies,

And the inhabitants of Toronto generally,

On the 22nd August, A.D., 1846,

And the tenth year of the reign of Her Most Gracious Majesty ..

QUEEN VICTORIA,

His Excellency Lieutenant-General the Right Honourable

CHARLES MURRAY, EARL CATHCART,

Being Governor-General of British North America and Commander of the Forces therein.

The Plans and Elevations of the Building prepared by

John G. Howard, Esq., Architect,

Were after mature deliberation and great care for the Health, Comfort, Security and Restoration, under Divine Providence, of the unfortunate beings for whom this

ASYLUM

Is erected, adopted by the Commissioners and carried into effect upon this site of

FIFTY ACRES OF LAND,

Munificently granted by Her Majesty's Government for this Humane Purpose.

Builder, Mr. John Ritchey,

Secretary to the Commissioners, Charles Daly,

Marshall of the day, Richard L. Denison, Esq.

- 46.—Sunset on the Beach.
- 47.—Waterfall—from a chromo by Turner.
- 48.—Thos. Tinning rescuing the sailors from the wrecked Pacific, Dec., 1861, J. G. Howard.
- 49.—Island Scenery in Scotland.
- 50.—Landscape with Cows.
- 51.—Yosemite—from a chromo lent by W. Cresswell, Esq., in 1872.
- 52.—Deer Pass—From a print by Edwin Landseer.
- 53.—Returning from Deer Stalking—from a print by E. Landseer.
- 54.—Ice Cone, 11 feet high, opposite the gate leading to Colborne Lodge. J. G. Howard.
- 55.—My first Design for a Government House—estimated cost £50,000.
- 56.—Quebec from the North of the River St. Charles, taken when the *Great Eastern* lay there.
- 57.—A small view of the Falls of Stabah.
- 58.—Mid-day Rest—from an oil painting by Kreighoff.
- 59.—Rapids on Lake Huron—from a drawing by Cresswell.
- 60.—Entrance to Colborne Lodge, 1838.
- 61.—Brock's Monument in 1833; before it was blown up.
- 62.—The Abandoned—from a print by Stanfield.
- 63.—Summer View of a Fisherman's Cottage.
- 64.—Trawlers—from Art Union Print.
- 65.—German Landscape, after David Teniers.
- 66.—Lake View—after a drawing by D. Fowler, Amherst Island.
- 67.—Glencoe—from a print with the celebrated Eagle.
- 68.—View of a Cedar Swamp, taken on the spot in 1840 by J. G. Howard.
- 69.—The Lawn in Front of Colborne Lodge, 1870.
- 70.—The Lawn in Front of Colborne Lodge, 1840.
- 71.—Greek Temple—from a drawing.
- 72.—The Temple of Arcopagus—from a print.
- 73.—Shipwreck—from a drawing by Turner.
- 74.—The Lantern of Demosthenes—from a print.
- 75.—The Parthenon—from Stewart's Athens.
- 76.—Swiss Haymakers—from an oil painting.
- 77.—A Landscape in North Wales—from an oil painting by Boddington, an English artist, who died about 1870. The picture is now in the possession of M. Spooner, Esq., Toronto, who values it at \$500.
- 78.—South View of Mrs. Howard's Tomb—from the Indian trail. See particulars No. 33.
- 79.—Falls of Niagara—taken in 1833.
- 80.—British Coffee House, Chewett's Buildings, designed and erected under the superintendency of Mr. Howard in 1834, now the Rossin House, which was also built under his superintendence.
- 81.—View of an Old Mill in Wales—from a drawing by Harding, R. A., London.
- 82.—A portrait of Mr. Howard, by Dalmain (landscape by himself), in 1835, while engaged making a survey of Toronto Harbour.
- 83.—Rosedale, the Villa of Sheriff Jarvis, as altered by Mr. Howard in 1836.
- 84.—The Sphinx—from a print in 1838.
- 85.—The immense Stone Figures of Memnon—from a print.
- 86.—An Old Wind Mill in Holland—from a drawing in oil by a celebrated Dutch artist.
- 87.—Summer View of Mrs. Howard's Tomb. Same as No. 33.

- 88.—A View in Venice—a wedding party.
 89.—A By-lane in North Wales.
 90.—An Italian Chateau—the Son's Birthday. Companion to 88.
 91.—A Scene on the French Coast—Low Tide.
 92.—Landscape with Cows—Storm coming up.
 93.—A View on the St. Lawrence, Thousand Islands, from a painting by Krieghoff.
 94.—A View of the Grenadier's Pond, High Park, by J. G. Howard.
 95.—Greek Temple, Theseus in the distance.
 96.—Habitans in Cariole, and Pony, by Krieghoff.
 97.—Design for an Arcade, drawn in 1830, J. G. H.
 98.—Interior of a Nunnery, by Mrs. Howard.
 99.—Interior of a Greek Temple.
 100.—Interior of a Monastery, by Mrs. Howard.
 101.—The Tired Soldier, by Mrs. Howard.
 102.—A Farm House in Switzerland.
 103.—A Village Church in Kent.
 104.—Shrimp Catchers, Sussex Coast, after J. H. Mole.
 105.—Woodcock Shooting, Mrs. Howard.
 106.—Partridge Shooting, by Mrs. Howard.
 107.—Wild Duck Shooting, by Mrs. Howard.
 108.—Pheasant Shooting, by Mrs. Howard.
 109.—Fishing Boat in a Gale, after Duncan
 110.—Fishing Boat in a Squall—from a drawing by Duncan.
 111.—A Raft from the Wreck of the *Grosvenor*, by J. G. H.
 112.—View in Switzerland—from an oil painting.
 113.—The Battle of the Nile, 1798.—It commenced about half past six, and about seven, when night closed, the only light was that from the fire of the contending fleets. Rear Admiral Sir H. Nelson, K.B., and Captain Edward Berry in the *Vanguard*, 74, with 595 men. About 10 p.m. the *Orient*, 120 guns, blew up, and by the prodigious light of the conflagration the colours of the different ships could be seen. Fifteen ships were either taken or sunk.
 114.—Shipwreck—from a print.
 115.—A view on the River Don, 1834, by J. G. H.
 116.—The Canada Company's Office, Frederick St., designed and erected by Mr. Howard.
 117.—The Grave Yard—from a drawing by Stanfield.
 118.—A River Scene—from a drawing by Mrs. Cope.
 119.—Coast Scene—from Art Union.
 120.—Coast Scene—from Art Union.
 121.—View of the Lake in Front of Colborne Lodge in the morning.
 122.—The same view in the afternoon, by J. G. H.
 123.—A View on the St. John River, N.S.—from pictures lent by W. C. Chewett, Esq.
 124.—A View on the St. John River, N.S.—from pictures lent by W. C. Chewett, Esq.
 125.—St. Mark's, Venice.
 126.—Falls of Niagara, and a Gaol and Court House.
 127.—La Morne, a market place in France.

The following six plans were designed by Mr. Howard in 1832, and were put in competition with six other gentlemen who were competing for the appointment of Drawing Master in U. C. College.

Mr. Howard gained the appointment, and entered upon the duties on the 1st April, 1833, and resigned on account of ill-health after 23 years' service.

- | | |
|----------------------------------------------------------------------------------|-------------------|
| A.—Design for Log Houses, | } In a Portfolio. |
| B.—Design for Frame Cottages, | |
| D.—Design for Villas, | |
| E.—Design for a Row of Shops, | |
| F.—Design for a Tavern, | |
| G.—Design for Churches, | |
| H.—Design for improving Rosedale. | |
| I.—South view of Marine Villa, called Sunny Side, erected by Mr. Howard in 1850. | |
- J.—Design for Court House and Gaol, Toronto. This plan gained Premium, £45.

A LIST OF PREMIUMS GAINED BY MR. HOWARD, ARCHITECT.

1834.—Gained the Premium of £30, in competition for laying out the Market Block, - Toronto.

1836.—Gained the Premium of £45, in competition for the Gaol and Court House, - Toronto.

1837.—Gained the Premium of £45, in competition for the new Gaol and Court House, London, C W.

1841.—Gained the Premium of £25, in competition for the new Market at Kingston.

1842.—Gained the Premium of £50, in competition for Queen's College at Kingston.

1844.—Gained the Premium of £30, in competition for the Provincial Lunatic Asylum at Toronto, which was built under his superintendence. See the laying of the Corner Stone on 22nd August, 1856.

A model for a Patent Bridge to be erected across a deep Ravine on Yonge Street for Mr. Hewson Not erected.

THE TOMB IN HIGH PARK.

A rustic cairn on hallowed ground,
Summited by a *Mystic Cross*;
O'rshadew'd by some lofty oaks—
The sun's bright rays through foliage pass;

Which lighting up the mystic cross,
Brings forth the symbol from the shade;
The rustic cairn all clothed with moss.
A glimmering light o'er it pervades.

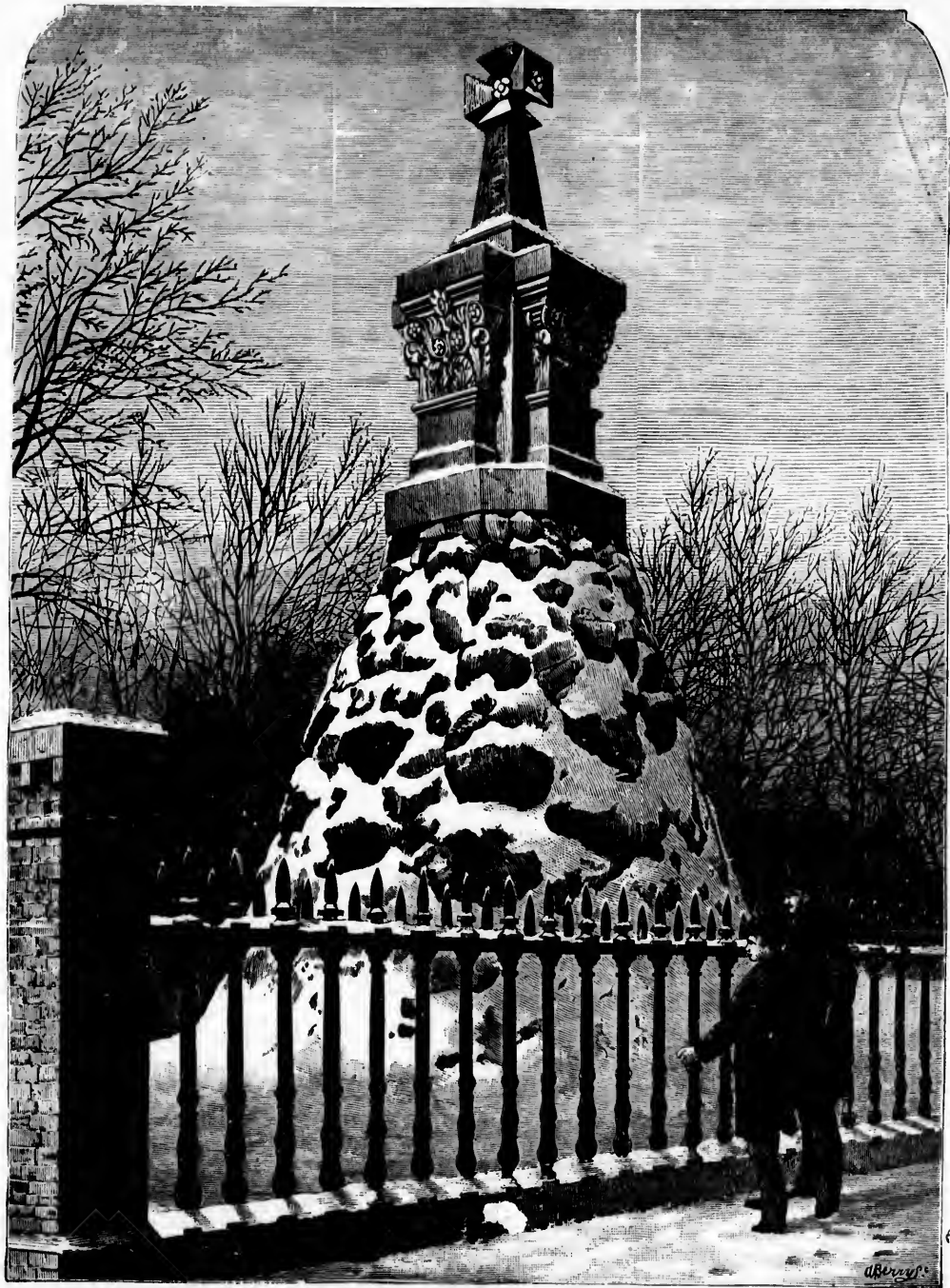
But what of this to the old man
Who mourns the loved one laid below—
Those rustic stones so stately piled
To mark the spot where he must go!

For years, altho' her mind was gone,
The dear one still was left with him;
Tho' oftentimes she knew him not,
Still was the ruin dear to him.

And why should he now cling to life—
Now all worth living for is gone;
With nothing left but care and strife,
But man, they say, was made to mourn.

1877.

J. H. G.



AN ARCHITECT'S TOMB IN TORONTO, CANADA.

COLBORNE LODGE, HIGH PARK, TORONTO.

THE TOMB OF MR. J. G. HOWARD, ARCHITECT, AND WIFE, ERECTED IN 1874 AND 1875.

The North side of the Graveyard is enclosed by a portion of the Old Iron Railing which surrounded St. Paul's Cathedral, London, England, designed and erected by Sir CHRISTOPHER WREN, Architect, in the year 1714.

Some further interesting particulars will be found in the following extract from *The Builder*, October 16th, 1880:—

AN ARCHITECT'S TOMB IN TORONTO.

THE RAILING FROM ST. PAUL'S.

The tomb, of which we give a view, has been erected on a portion of High Park, Toronto, by Mr. John G. Howard, of that city, architect, in memory of his wife, and in readiness for himself. The cairn is constructed with granite boulders. Mrs. Howard was a Scotch lady, which accounts for the cairn. Mr. Howard himself "is a Masonic Knight Templar—therefore the double pedestal, terminating with the Maltese cross." The consecrated ground on which it stands is inclosed with some of the old iron railing which surrounded St. Paul's Cathedral, London, England, for 160 years. The cost of erecting the tomb, including vault and iron railing, amounted to \$3,120. The granite boulders are all bedded in Portland cement against a brick shaft in the centre, which supports the marble pedestal. This weighs over 10 tons, and came from the Rutland Quarries, Vermont, U.S. Engraved on a brass plate, and fixed round one of the gate-posts of the old iron railing, is the following inscription:—"Sacred to the memory of John George Howard and Jeannima Frances, his wife. John George, born 27th July, 1803; Jeannima Frances, born 18th August, 1802, died 1st September, 1877. Aged 75 years." On a brass plate fixed round the other iron gate-post:—

" St. Paul's Cathedral for 160 years I did enclose,
Oh! stranger, look with reverence;
Man! man! unstable man!
It was thou who caused the severance.

Nov. 18th, 1875."

J. H. G.

The vicissitudes of the railing are curious. After its removal from St Paul's it was purchased by Mr. Robert Mountcastle, Waverley-place, St. John's Wood, London, of Mr. J. B. Hogarth, iron merchant, London, and shipped by him in good condition, on board the steamship *Delta*, for Toronto, on the 14th of October, 1874. The *Delta* went on shore about five miles below Cape Chat Light, on the 8th of November. A portion of the railing was recovered from the wreck, and sent to Montreal by the salvage men in the spring of 1875, in a very mutilated state, but was brought from Montreal by Mr. Howard, 17th of August, in that year, and arrived in Toronto on the 21st of the same month. It was repaired by Messrs. William Hamilton & Son, at the St. Lawrence Foundry, Toronto, and finally fixed on the stone curb, where it now stands, on the 18th of November, 1875.

Mr. Howard has behaved munificently to Toronto. High Park, which contains 165 acres, was his property, and had cost him \$50,000. Having been largely employed as an architect and civil engineer in Toronto and Canada generally, he considered it his duty to return a portion of the property he had accumulated to the Corporation of Toronto, and the land has been conveyed in trust to the citizens for a public park. One hundred and twenty acres they already occupy, and the other forty-five acres, with all the buildings thereon, they will have after his death, with the exception of the consecrated eighth of an acre, on which is erected the tomb depicted on a former page.

TO JOHN G. HOWARD, ESQUIRE,
OF COLBORNE LODGE, HIGH PARK.

Some sing of the heroes that battles have made,
Of genius surpassing the glitter of arms ;
They eulogize men who made carnage a trade,
Tho' heroes indeed ! they for me have few charms.

With them I've no quarrel, but mournfully lay
My wreath of immortelles with tears on the grave
Of the vanquished and victors who fell in the fray,
Who doubtless alike were heroic and brave.

They fell in the quarrels that statesmen had made,
In conflicts, perhaps, without reason or right ;
But on them the burden of battle was laid,
And true to their country they fell in the fight.

Peace, peace, to their ashes ! They merit the crown
I gratefully yield them, the laurel and bay ;
Their exploits of valour deserve more renown,
Than many who boast of their knighthood to-day.

But dearer to me are the men who have won,
In peaceful arenas the laurels they wear ;
Who, viewing the past, and the work they have done,
Behold through its vista a vision more fair.

No widows bereft mark the steps they have trod,
No blood-curdling scene rises up to their view ;
But duty performed leading nearer to God,
Is the record of lives that were noble and true.

Of such is the subject of these humble lines,
A man of high purpose, with rich gifts endued.
Whose life, by his acts of benevolence, shines
A star among men of the first magnitude.

Of such would I sing with a hope to inspire
To highest endeavour such deeds to excel ;
And leave to the world the accomplished desire,
And all future ages shall say, " They did well."

More lasting their fame than the beautiful stone
Affection has reared where lov'd ashes repose ;
And when the dear name is no longer alone,
Her mem'ry with *His* will be sweet as the rose.

July 12, 1887.

ROBERT AWDE.

A SPLENDID GIFT.

—

THE HIGH PARK RANGER AGAIN A PUBLIC BENEFACTOR.

—

DONATION TO THE PUBLIC LIBRARY.

—

Mr. J. G. Howard, who a few years ago gave to the city that noble demesne now called High Park, has now added to his title to be enrolled among the chief of Toronto's worthies. Yesterday he sent for Mr. Bain, Librarian of the Public Library, and acquainted him with the fact that he had made up his mind to hand over to the Library, now, his books, instead of bequeathing them by will, as had been his intention for some years past.

Among the books were the following:—

	VOLS.
Illustrated London News	61
Builder	34
Canadian Illustrated News	18
Ballou's Pictorial	6
Picturesque America	2
Art Journal	4
Illustrations of Piedmont and Italy	2
" Canadian Scenery	2
" American Scenery	2
" Switzerland	2
" Scotland	2
Finden's Ports and Harbours of Great Britain	2
Antiquities of Ireland	2
History of Wales	2
* Claude's Liber Veritatis, folio	3
Turner Gallery, folio	3
Allibone's Dictionary of Authors	3
Graphic	18
Illustrated Times	16
Scientific American	34
Weekly Globe	4
	219

* A beautiful copy, valued in London at £50 sterling.

