

**CIHM
Microfiche
Series
(Monographs)**

**ICMH
Collection de
microfiches
(monographies)**



Canadian Institute for Historical Microreproductions / Institut canadien de microreproductions historiques

© 1998

The
copy
may
the
sign
chec



This
Ce d

10x



Technical and Bibliographic Notes / Notes techniques et bibliographiques

The Institute has attempted to obtain the best original copy available for filming. Features of this copy which may be bibliographically unique, which may alter any of the images in the reproduction, or which may significantly change the usual method of filming are checked below.

- Coloured covers / Couverture de couleur
- Covers damaged / Couverture endommagée
- Covers restored and/or laminated / Couverture restaurée et/ou pelliculée
- Cover title missing / Le titre de couverture manque
- Coloured maps / Cartes géographiques en couleur
- Coloured ink (i.e. other than blue or black) / Encre de couleur (i.e. autre que bleue ou noire)
- Coloured plates and/or illustrations / Planches et/ou illustrations en couleur
- Bound with other material / Relié avec d'autres documents
- Only edition available / Seule édition disponible
- Tight binding may cause shadows or distortion along interior margin / La reliure serrée peut causer de l'ombre ou de la distorsion le long de la marge intérieure.
- Blank leaves added during restorations may appear within the text. Whenever possible, these have been omitted from filming / Il se peut que certaines pages blanches ajoutées lors d'une restauration apparaissent dans le texte, mais, lorsque cela était possible, ces pages n'ont pas été filmées.
- Additional comments / Commentaires supplémentaires:

L'Institut a microfilmé le meilleur exemplaire qu'il lui a été possible de se procurer. Les détails de cet exemplaire qui sont peut-être uniques du point de vue bibliographique, qui peuvent modifier une image reproduite, ou qui peuvent exiger une modification dans la méthode normale de filmage sont indiqués ci-dessous.

- Coloured pages / Pages de couleur
- Pages damaged / Pages endommagées
- Pages restored and/or laminated / Pages restaurées et/ou pelliculées
- Pages discoloured, stained or foxed / Pages décolorées, tachetées ou piquées
- Pages detached / Pages détachées
- Showthrough / Transparence
- Quality of print varies / Qualité inégale de l'impression
- Includes supplementary material / Comprend du matériel supplémentaire
- Pages wholly or partially obscured by errata slips, tissues, etc., have been refilmed to ensure the best possible image / Les pages totalement ou partiellement obscurcies par un feuillet d'errata, une pelure, etc., ont été filmées à nouveau de façon à obtenir la meilleure image possible.
- Opposing pages with varying colouration or discolourations are filmed twice to ensure the best possible image / Les pages s'opposant ayant des colorations variables ou des décolorations sont filmées deux fois afin d'obtenir la meilleure image possible.

This item is filmed at the reduction ratio checked below /
Ce document est filmé au taux de réduction indiqué ci-dessous.

	10x		14x		18x		22x		26x		30x	
					✓							
	12x		16x		20x		24x		28x		32x	

The copy filmed here has been reproduced thanks to the generosity of:

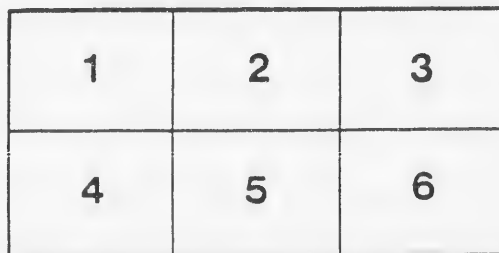
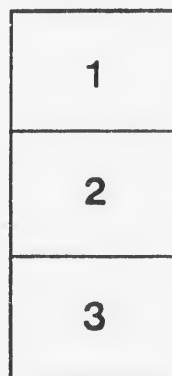
National Gallery of Canada,
Library

The images appearing here are the best quality possible considering the condition and legibility of the original copy and in keeping with the filming contract specifications.

Original copies in printed paper covers are filmed beginning with the front cover and ending on the last page with a printed or illustrated impression, or the back cover when appropriate. All other original copies are filmed beginning on the first page with a printed or illustrated impression, and ending on the last page with a printed or illustrated impression.

The last recorded frame on each microfiche shall contain the symbol \rightarrow (meaning "CONTINUED"), or the symbol ∇ (meaning "END"), whichever applies.

Maps, plates, charts, etc., may be filmed at different reduction ratios. Those too large to be entirely included in one exposure are filmed beginning in the upper left hand corner, left to right and top to bottom, as many frames as required. The following diagrams illustrate the method:



L'exemplaire filmé fut reproduit grâce à la générosité de:

Musée des Beaux-Arts du Canada,
Bibliothèque

Les images suivantes ont été reproduites avec le plus grand soin, compte tenu de la condition et de la netteté de l'exemplaire filmé, et en conformité avec les conditions du contrat de filmage.

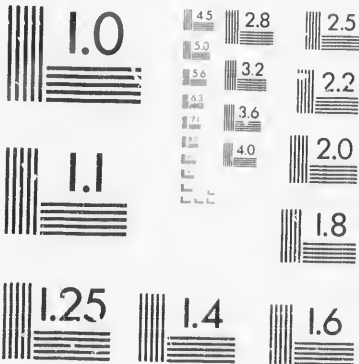
Les exemplaires originaux dont la couverture en papier est imprimée sont filmés en commençant par le premier plat et en terminant soit par la dernière page qui comporte une empreinte d'impression ou d'illustration, soit par le second plat, selon le cas. Tous les autres exemplaires originaux sont filmés en commençant par la première page qui comporte une empreinte d'impression ou d'illustration et en terminant par la dernière page qui comporte une telle empreinte.

Un des symboles suivants apparaîtra sur la dernière image de chaque microfiche, selon le cas: le symbole \rightarrow signifie "A SUIVRE", le symbole ∇ signifie "FIN".

Les cartes, planches, tableaux, etc., peuvent être filmés à des taux de réduction différents. Lorsque le document est trop grand pour être reproduit en un seul cliché, il est filmé à partir de l'angle supérieur gauche, de gauche à droite, et de haut en bas, en prenant le nombre d'images nécessaire. Les diagrammes suivants illustrent la méthode.

MICROCOPY RESOLUTION TEST CHART

(ANSI and ISO TEST CHART No. 2)



APPLIED IMAGE Inc

1653 East Main Street
Rochester, New York 14609 USA
(716) 482-0300 - Phone
(716) 288-5909 - Fax



CATALOGUE

... OF ...

OIL PAINTINGS

... BY ...

PAUL PEEL, R.C.A.

PUPIL OF GEROME, BOULANGER, LEFEVERE,
BENJ. CONSTANT, AND DOUCET.

Graduate of the Pennsylvania Academy of Fine Arts, and
Ecole de Beaux Arts of Paris.

Honorable Mention 1889, and Gold Medal 1890,
Paris Salon.

Mail Job Print.

CONDITIONS OF SALE

1. The highest bidder to be the buyer, and if any dispute arise between two or more bidders, the lot so in dispute shall be immediately put up again and re-sold.
2. The purchasers to give their names and addresses, and to pay down a cash deposit, or the whole of the purchase-money, *if required*, in default of which the lot or lots so purchased to be immediately put up again and re-sold.
3. The lots to be taken away at the buyer's expense and risk upon the conclusion of the sale, and the remainder of the purchase-money to be absolutely paid or otherwise settled for to the satisfaction of the auctioneers, on or before delivery; in default of which, the undersigned will not hold themselves responsible if the lots be lost, stolen, damaged, or destroyed, but they will be left at the sole risk of the purchaser.
4. The sale of any article is not to be set aside on account of any error in the description. All articles are exposed for public exhibition one or more days, and are sold just as they are, without recourse.
5. To prevent inaccuracy in delivery, and inconvenience in the settlement of the purchases, no lot can, on any account, be removed during the sale.
6. Upon failure to comply with the above conditions, the money deposited in part payment shall be forfeited; all lots uncleared within the time aforesaid shall be re-sold by public or private sale, without further notice, and the deficiency (if any) attending such re-sale shall be made good by the defaulter at this sale, together with all charges attending the same. This condition is without prejudice to the right of the auctioneers to enforce the contract made at this sale, without such re-sale, if they think fit.

OLIVER, COATE & CO.



BREAKFAST

CATALOGUE OF SALE



1. On the Lake Shore
near Toronto
2. The Two Friends
Etaples, France
3. A Threshing Bee
Normandy

- | | |
|---|---------------|
| 4. Twilight | Quebec |
| 5. Luxembourg Garden | Paris |
| 6. Distant View of R. C. Yacht Club House
Toronto Island | |
| 7. Mother's Help | Normandy |
| 8. A Daisy Field | Pas de Calais |
| 9. Sweet Flowers | |
| 10. Patient | Brittany |

- | | |
|-------------------------------|------------|
| 11. Good News | Toronto |
| 12. Cabbage Field | Brittany |
| 13. Spring Time | Etaples |
| 14. Overlooking North Channel | Quebec |
| 15. A Winter Scene | Brittany |
| 16. The Ship-builder | Concarneau |
| 17. Guarding the Sheep | Normandy |



18. Ocean Shells

19. The R. C. Yacht Club House
Toronto Island

20. Canadian Fruit

21. On the Hill
Brittany

22. An Arabian Guard
Normandy
23. Solitude
Normandy
24. The Milkmaid
Normandy
25. Luxembourg Garden—Morning
Paris
26. Breakfast
Brittany
27. The Month of May
Brittany
28. Canadian Poppies

29. Sunshine
30. On the Mimico Road near Toronto
31. Return of the Flock Brittany
32. Quebec from Point Levis
33. Farewell
34. The Venetian Bather PARIS SALON, 1889
35. Luxembourg Garden Paris



36. On the Aven River

France

37. A Glimpse of Toronto Bay
from Island

38. On the Bay of Biscay

39. In the Meadow
Normandy
40. The Farm Yard Pet
Brittany
41. The Reaper's Joy
Brittany
42. Awaiting the Bath
France
43. Souvenir
44. Adoration
Brittany
45. Still Life

45. Still Life

ii

46. Life Is Bitter
Study for PARIS SALON PICTURE, 1889

47. Evening
Brittany

48. Horse Shoe Falls
Niagara

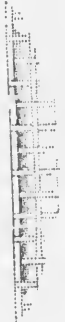
49. The Sea Shore
France

50. Lagoon
Toronto Island

51. Luxembourg Garden
Paris

52. Trials of a Milkmaid
Brittany

53. Sea Shells
54. On the St. Lawrence near Quebec
55. Marine View St. Lawrence River
56. Marine View St. Lawrence River
57. Landscape Normandy



2584
34

581

1

