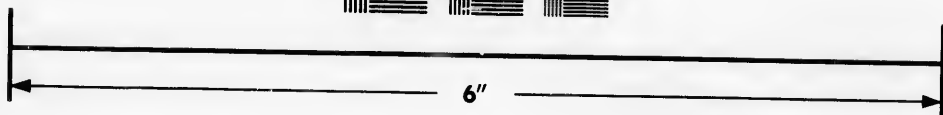
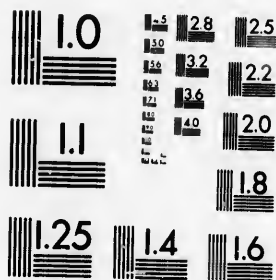


**IMAGE EVALUATION
TEST TARGET (MT-3)**



**Photographic
Sciences
Corporation**

23 WEST MAIN STREET
WEBSTER, N.Y. 14580
(716) 872-4502



**CIHM/ICMH
Microfiche
Series.**

**CIHM/ICMH
Collection de
microfiches.**



Canadian Institute for Historical Microproductions / Institut canadien de microreproductions historiques



© 1986

Technical and Bibliographic Notes/Notes techniques et bibliographiques

The Institute has attempted to obtain the best original copy available for filming. Features of this copy which may be bibliographically unique, which may alter any of the images in the reproduction, or which may significantly change the usual method of filming, are checked below.

L'Institut a microfilmé le meilleur exemplaire qu'il lui a été possible de se procurer. Les détails de cet exemplaire qui sont peut-être uniques du point de vue bibliographique, qui peuvent modifier une image reproduite, ou qui peuvent exiger une modification dans la méthode normale de filmage sont indiqués ci-dessous.

- Coloured covers/
Couverture de couleur
- Covers damaged/
Couverture endommagée
- Covers restored and/or laminated/
Couverture restaurée et/ou pelliculée
- Cover title missing/
Le titre de couverture manque
- Coloured maps/
Cartes géographiques en couleur
- Coloured ink (i.e. other than blue or black)/
Encre de couleur (i.e. autre que bleue ou noire)
- Coloured plates and/or illustrations/
Planches et/ou illustrations en couleur
- Bound with other material/
Relié avec d'autres documents
- Tight binding may cause shadows or distortion along interior margin/
La reliure serrée peut causer de l'ombre ou de la distorsion le long de la marge intérieure
- Blank leaves added during restoration may appear within the text. Whenever possible, these have been omitted from filming/
Il se peut que certaines pages blanches ajoutées lors d'une restauration apparaissent dans le texte, mais, lorsque cela était possible, ces pages n'ont pas été filmées.

- Coloured pages/
Pages de couleur
- Pages damaged/
Pages endommagées
- Pages restored and/or laminated/
Pages restaurées et/ou pelliculées
- Pages discoloured, stained or foxed/
Pages décolorées, tachetées ou piquées
- Pages detached/
Pages détachées
- Showthrough/
Transparence
- Quality of print varies/
Qualité inégale de l'impression
- Includes supplementary material/
Comprend du matériel supplémentaire
- Only edition available/
Seule édition disponible
- Pages wholly or partially obscured by errata slips, tissues, etc., have been refilmed to ensure the best possible image/
Les pages totalement ou partiellement obscurcies par un feuillet d'errata, une pelure, etc., ont été filmées à nouveau de façon à obtenir la meilleure image possible.

Additional comments: [Printed ephemera] 1 sheet (verso blank) This copy is a photoreproduction.
Commentaires supplémentaires:

This item is filmed at the reduction ratio checked below/
Ce document est filmé au taux de réduction indiqué ci-dessous.

10X	12X	14X	16X	18X	20X	22X	24X	26X	28X	30X	32X
								✓			

The copy filmed here has been reproduced thanks to the generosity of:

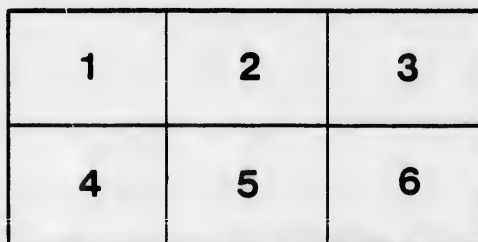
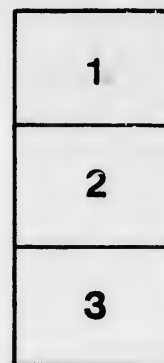
D. B. Weldon Library
University of Western Ontario
(Regional History Room)

The images appearing here are the best quality possible considering the condition and legibility of the original copy and in keeping with the filming contract specifications.

Original copies in printed paper covers are filmed beginning with the front cover and ending on the last page with a printed or illustrated impression, or the back cover when appropriate. All other original copies are filmed beginning on the first page with a printed or illustrated impression, and ending on the last page with a printed or illustrated impression.

The last recorded frame on each microfiche shall contain the symbol \rightarrow (meaning "CONTINUED"), or the symbol ∇ (meaning "END"), whichever applies.

Maps, plates, charts, etc., may be filmed at different reduction ratios. Those too large to be entirely included in one exposure are filmed beginning in the upper left hand corner, left to right and top to bottom, as many frames as required. The following diagrams illustrate the method:



L'exemplaire filmé fut reproduit grâce à la générosité de:

D. B. Weldon Library
University of Western Ontario
(Regional History Room)

Les images suivantes ont été reproduites avec le plus grand soin, compte tenu de la condition et de la netteté de l'exemplaire filmé, et en conformité avec les conditions du contrat de filmage.

Les exemplaires originaux dont la couverture en papier est imprimée sont filmés en commençant par le premier plat et en terminant soit par la dernière page qui comporte une empreinte d'impression ou d'illustration, soit par le second plat, selon le cas. Tous les autres exemplaires originaux sont filmés en commençant par la première page qui comporte une empreinte d'impression ou d'illustration et en terminant par la dernière page qui comporte une telle empreinte.

Un des symboles suivants apparaîtra sur la dernière image de chaque microfiche, selon le cas: le symbole \rightarrow signifie "A SUIVRE", le symbole ∇ signifie "FIN".

Les cartes, planches, tableaux, etc., peuvent être filmés à des taux de réduction différents. Lorsque le document est trop grand pour être reproduit en un seul cliché, il est filmé à partir de l'angle supérieur gauche, de gauche à droite, et de haut en bas, en prenant le nombre d'images nécessaire. Les diagrammes suivants illustrent la méthode.

CHANCER

Pursuant to a decree on Further Direction and
Chancery, in a certain

M' CARTY VS

And with the approbation of James Shanly, Esquire,
will be sold by Public Auction

Auction Rooms of M
ON DUNDAS STREET, IN THE

TUESDAY, the 2nd Dec

At 1 o'Clock in the

IN ONE LOT, THE UNDER

Part of Lot No. 1, in the 10th Concession of the T
of Oxford, and better known and described as building lots, I
in the Village of Thamesford, reserving thereout a right of way
of 7 rods from said Allen Street; also, building lot No. 1, on the
West of Milton street; also, building lots Nos. 3, 4

Part of Lot No. 1, in the 10th Concession of the T

EMERY'S SALE

Execution and final order for sale of the Court of
in a certain cause of

VS. JOHNS

only, Esquire, Master of the said Court at London,
by Public Auction, at the

of Mr. A. S. Emery,
in the City of London, on

and Day of June next

in the afternoon,

UNDERMENTIONED LANDS:

tion of the Township of Nissouri East, in the County
building lots, Nos. "6" and "7," on the East side of Allen Street,
a right of way across both lots, 40 feet wide, and at the distance
No. 1, on the North side of Dundas Street, East of the River
lots Nos. 3, 4 and 5, on the East side of Milton street; also,

tion of the Township of Nissouri East, in the County

Part of Lot No. 1, in the 10th Concession of the Town of Oxford, and better known and described as building lots, No. 1, in the Village of Thamesford, reserving thereout a right of way of 7 rods from said Allen Street; also, building lot No. 1, on the North side of Thames, and West of Milton street; also, building lots Nos. 3, 4 and 5, on the west side of Sullivan street; also, the side of Milton street; also, lots 6, 7, 8, 9 and 10, on the said west land known as the Mill Property, with the Mills and Mill privileges, and also the right to flood and overflow all such parts of lots on the Nissouri, as may be required to form a head and fall at the dam, with a water mark. The Mill is a Two and a-half Storey

FRAME GRIST

With Stone Basement, having Two Run of Stones and other necessary Machinery, and is known

There are on the premises a Two

FRAME WOOLLEN

A Two Storey Frame Dwelling House.

The Grist Mill is well situated, has a large local custom, is in good repair and

The Purchaser is to pay down, at the time of sale, a deposit of \$1,000, the balance of his purchase money into Court, within One month from the date of sale, and the property to be sold subject to a reserved bidding, and the purchaser will not be bound to purchase the next. In other respects, the conditions of the sale are the standing conditions of sale.

Further Particulars and Conditions of Sale may be had on application to the Vendor.
Dated this 20th day of April, A. D., 1874.

W. R. MEREDITH,

Vendor's Solicitor.

(Herald Print)

on of the Township of Nissouri East, in the County
building lots, Nos. "6" and "7," on the East side of Allen Street,
right of way across both lots, 40 feet wide, and at the distance
No. 1, on the North side of Dundas Street, East of the River
lots Nos. 3, 4 and 5, on the East side of Milton street; also,
reet; also, the unsold or rear parts of lots 4 and 5, on the west
on the said west side of Milton street; also, the lot or parcel of
nd Mill privileges thereon erected or thereto in any wise belong-
h parts of lots 1, 2 and 3, in the said 10th Concession of East
at the dam, where it is now erected, of 9 feet 6 inches at low

WATERWHEEL MILL

of Stones, a Smut Mill, Duster, Screener, and
and is known as the "Thamesford Mills."

premises a Two and a-half Storey

ALLEN FACTORY,

Milling House, and a small Frame Barn.

, is in good repair and running order; and the dam is new and well built.

a deposit of \$10 for every \$100 of his purchase money, and is to pay
One month from the day of sale, with interest. The property will
er will not be entitled to possession until the First day of August
e standing conditions of the Court of Chancery.

ication to the Vendor's Solicitor, London, Ontario, or to the Auctioneer.

J. SHANLY,

(Herald Print, London.)

Master at London.

