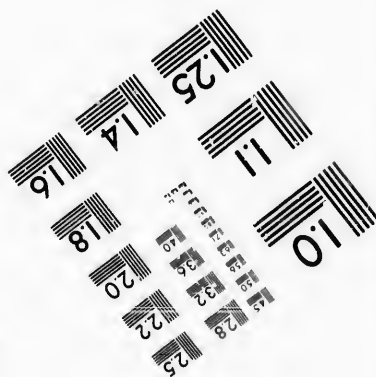
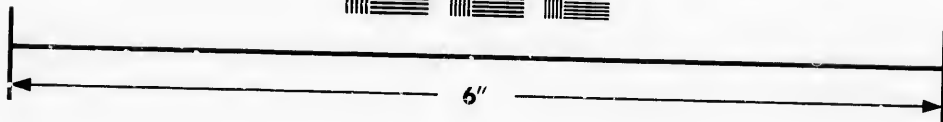
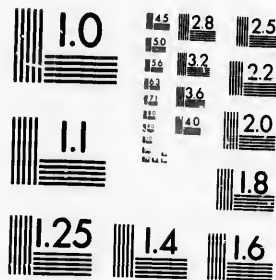
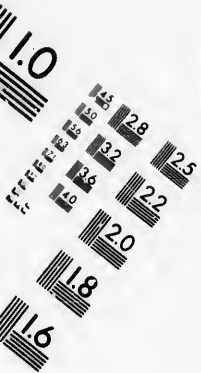


IMAGE EVALUATION
TEST TARGET (MT-3)



Photographic
Sciences
Corporation

23 WEST MAIN STREET
WEBSTER, N.Y. 14580
(716) 872-4503



**CIHM/ICMH
Microfiche
Series.**

**CIHM/ICMH
Collection de
microfiches.**



Canadian Institute for Historical Microreproductions / Institut canadien de microreproductions historiques



© 1986

Technical and Bibliographic Notes/Notes techniques et bibliographiques

The Institute has attempted to obtain the best original copy available for filming. Features of this copy which may be bibliographically unique, which may alter any of the images in the reproduction, or which may significantly change the usual method of filming, are checked below.

L'Institut a microfilmé le meilleur exemplaire qu'il lui a été possible de se procurer. Les détails de cet exemplaire qui sont peut-être uniques du point de vue bibliographique, qui peuvent modifier une image reproduite, ou qui peuvent exiger une modification dans la méthode normale de filmage sont indiqués ci-dessous.

- | | |
|--|--|
| <input checked="" type="checkbox"/> Coloured covers/
Couverture de couleur | <input type="checkbox"/> Coloured pages/
Pages de couleur |
| <input type="checkbox"/> Covers damaged/
Couverture endommagée | <input type="checkbox"/> Pages damaged/
Pages endommagées |
| <input type="checkbox"/> Covers restored and/or laminated/
Couverture restaurée et/ou pelliculée | <input type="checkbox"/> Pages restored and/or laminated/
Pages restaurées et/ou pelliculées |
| <input type="checkbox"/> Cover title missing/
Le titre de couverture manque | <input checked="" type="checkbox"/> Pages discoloured, stained or foxed/
Pages décolorées, tachetées ou piquées |
| <input type="checkbox"/> Coloured maps/
Cartes géographiques en couleur | <input checked="" type="checkbox"/> Pages detached/
Pages détachées |
| <input type="checkbox"/> Coloured ink (i.e. other than blue or black)/
Encre de couleur (i.e. autre que bleue ou noire) | <input checked="" type="checkbox"/> Showthrough/
Transparence |
| <input type="checkbox"/> Coloured plates and/or illustrations/
Planches et/ou illustrations en couleur | <input type="checkbox"/> Quality of print varies/
Qualité inégale de l'impression |
| <input type="checkbox"/> Bound with other material/
Relié avec d'autres documents | <input type="checkbox"/> Includes supplementary material/
Comprend du matériel supplémentaire |
| <input type="checkbox"/> Tight binding may cause shadows or distortion
along interior margin/
La reliure serrée peut causer de l'ombre ou de la
distorsion le long de la marge intérieure | <input type="checkbox"/> Only edition available/
Seule édition disponible |
| <input type="checkbox"/> Blank leaves added during restoration may
appear within the text. Whenever possible, these
have been omitted from filming/
Il se peut que certaines pages blanches ajoutées
lors d'une restauration apparaissent dans le texte,
mais, lorsque cela était possible, ces pages n'ont
pas été filmées. | <input type="checkbox"/> Pages wholly or partially obscured by errata
slips, tissues, etc., have been refilmed to
ensure the best possible image/
Les pages totalement ou partiellement
obscurcies par un feuillet d'errata, une pelure,
etc., ont été filmées à nouveau de façon à
obtenir la meilleure image possible. |
| <input type="checkbox"/> Additional comments:/
Commentaires supplémentaires: | |

This item is filmed at the reduction ratio checked below/
Ce document est filmé au taux de réduction indiqué ci-dessous.

10X	14X	18X	22X	26X	30X
<input type="checkbox"/>	<input type="checkbox"/>	<input checked="" type="checkbox"/>	<input type="checkbox"/>	<input type="checkbox"/>	<input type="checkbox"/>
12X	16X	20X	24X	28X	32X

The copy filmed here has been reproduced thanks to the generosity of:

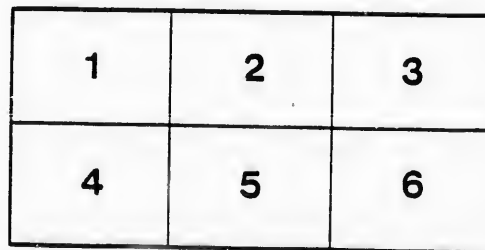
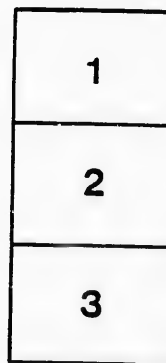
D.B. Weldon Library
University of Western Ontario
(Regional History Room)

The images appearing here are the best quality possible considering the condition and legibility of the original copy and in keeping with the filming contract specifications.

Original copies in printed paper covers are filmed beginning with the front cover and ending on the last page with a printed or illustrated impression, or the back cover when appropriate. All other original copies are filmed beginning on the first page with a printed or illustrated impression, and ending on the last page with a printed or illustrated impression.

The last recorded frame on each microfiche shell contains the symbol \rightarrow (meaning "CONTINUED"), or the symbol ∇ (meaning "END"), whichever applies.

Maps, plates, charts, etc., may be filmed at different reduction ratios. Those too large to be entirely included in one exposure are filmed beginning in the upper left hand corner, left to right and top to bottom, as many frames as required. The following diagrams illustrate the method:



L'exemplaire filmé fut reproduit grâce à la générosité de:

D.B. Weldon Library
University of Western Ontario
(Regional History Room)

Les images suivantes ont été reproduites avec le plus grand soin, compte tenu de la condition et de la netteté de l'exemplaire filmé, et en conformité avec les conditions du contrat de filmage.

Les exemplaires originaux dont la couverture en papier est imprimée sont filmés en commençant par le premier plat et en terminant soit par la dernière page qui comporte une empreinte d'impression ou d'illustration, soit par le second plat, selon le cas. Tous les autres exemplaires originaux sont filmés en commençant par la première page qui comporte une empreinte d'impression ou d'illustration et en terminant par la dernière page qui comporte une telle empreinte.

Un des symboles suivants apparaîtra sur la dernière image de chaque microfiche, selon le cas: le symbole \rightarrow signifie "A SUIVRE", le symbole ∇ signifie "FIN".

Les cartes, planches, tableaux, etc., peuvent être filmés à des taux de réduction différents. Lorsque le document est trop grand pour être reproduit en un seul cliché, il est filmé à partir de l'angle supérieur gauche, de gauche à droite, et de haut en bas, en prenant le nombre d'images nécessaire. Les diagrammes suivants illustrent la méthode.

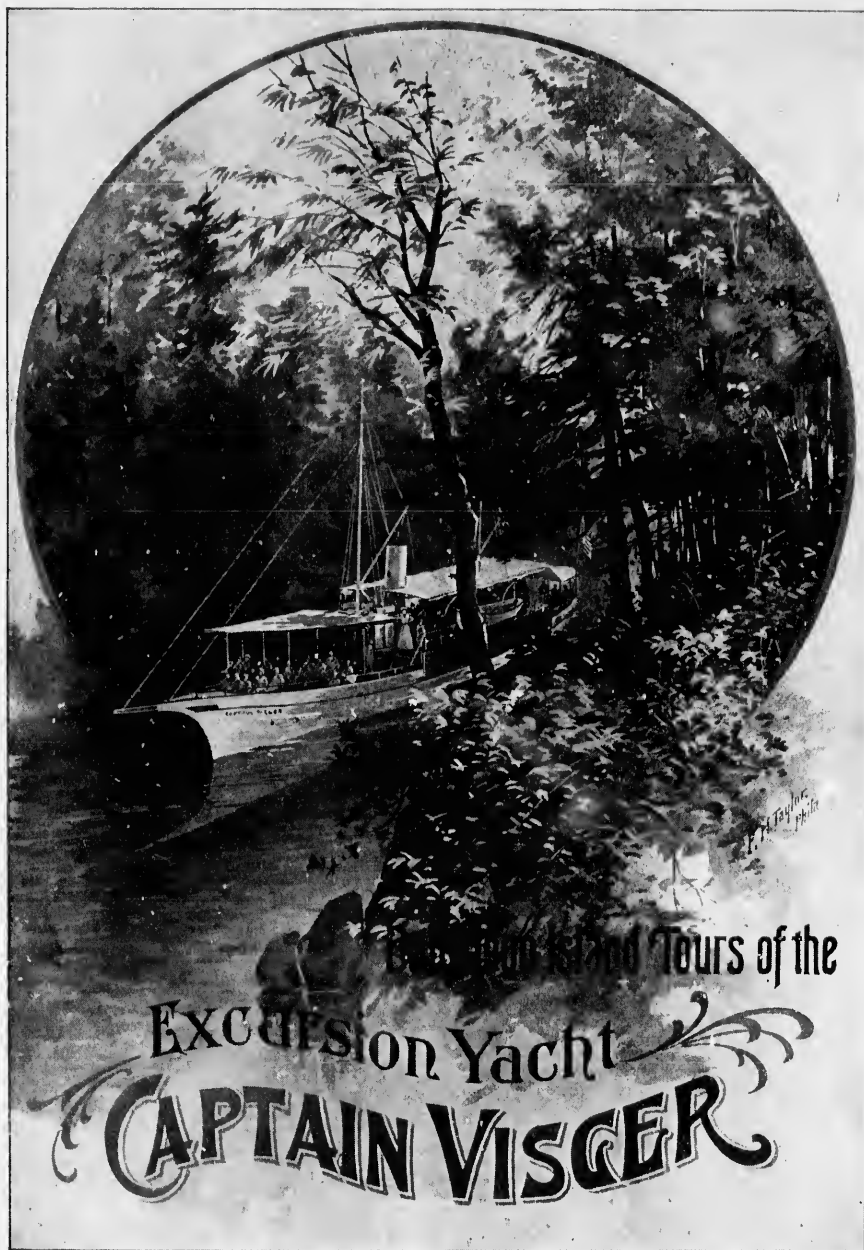
aire
détails
des du
modifier
ger une
filmage

es

errata
to

pelure,
on à

32X



Excursion Yacht
CAPTAIN VISGER

SEASON OF 1899.

PRICE, 10 CENTS.

PATRONIZED BY THE BETTER CLASSES
SOCIALY AND COMMERCIALY

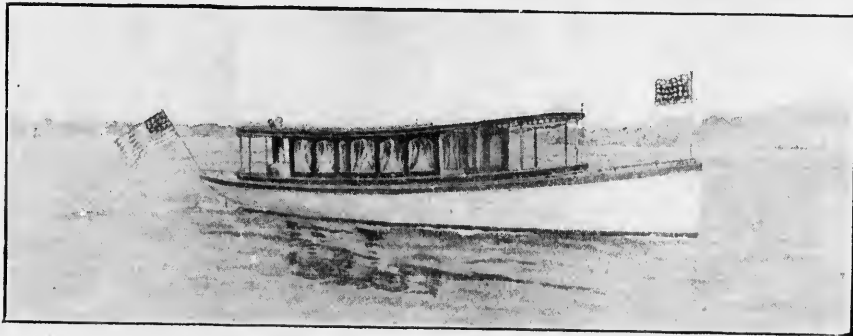
SITUATED IN THE CENTER OF
MONTREAL'S ACTIVITY

St. Lawrence Hall Montreal

ALL THE COMFORTS OF THE
MOST REFINED HOME

A LIBERALLY CONDUCTED
AND POPULAR HOTEL

We Build HIGH GRADE
Pleasure and Racing Boats
OF ALL SIZES FROM A CANOE TO A
SAIL YACHT or STEAM YACHT



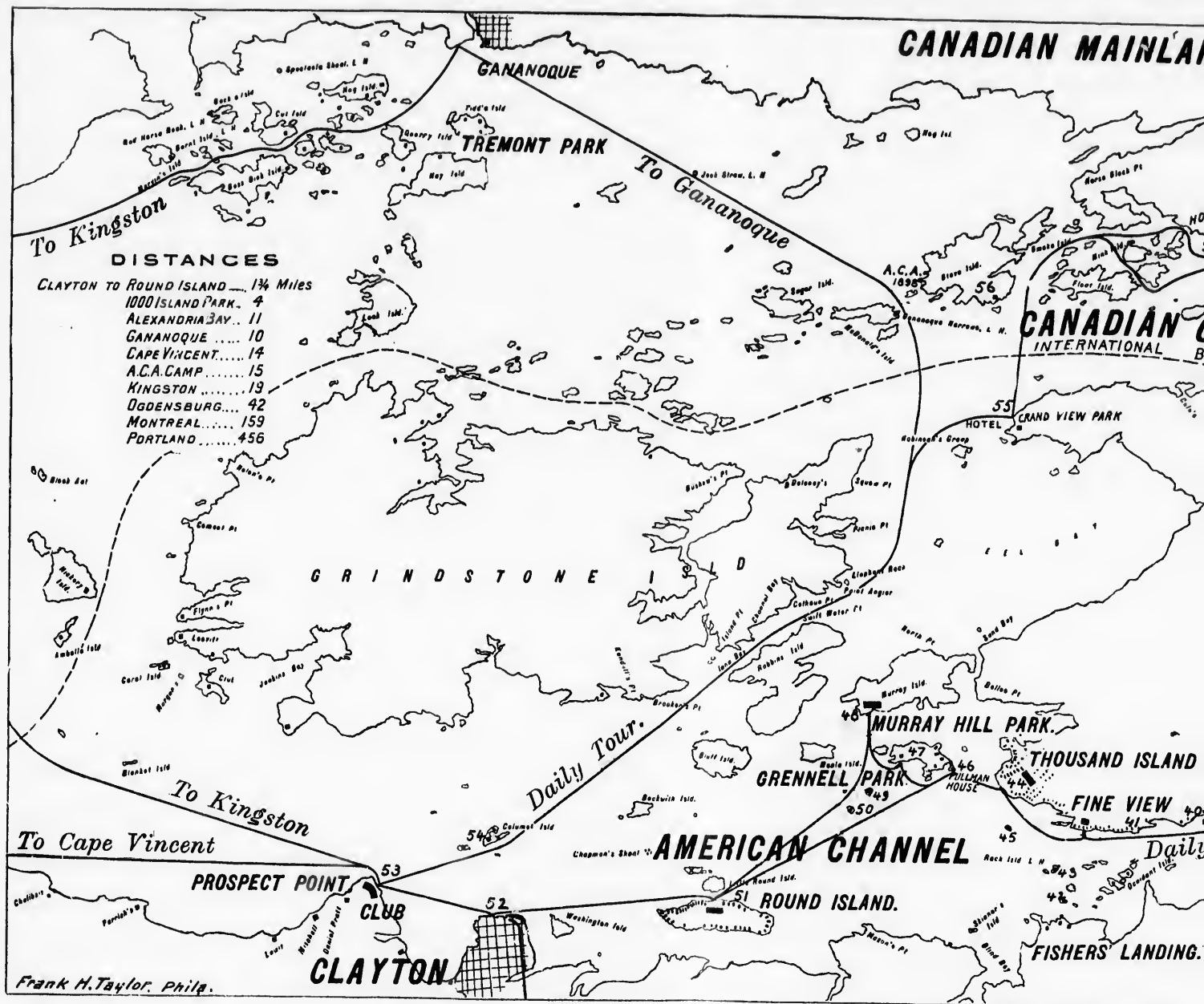
35-Foot Cabin Launch.

WE ARE THE ORIGINAL DESIGNERS
AND BUILDERS OF THE FAMOUS
ST. LAWRENCE RIVER SKIFFS

Write us for Catalogue and Booklets
THE SPALDING ST. LAWRENCE BOAT CO.
OGDENSBURG, N.Y. (J. G. FRASER, MGR.)

F

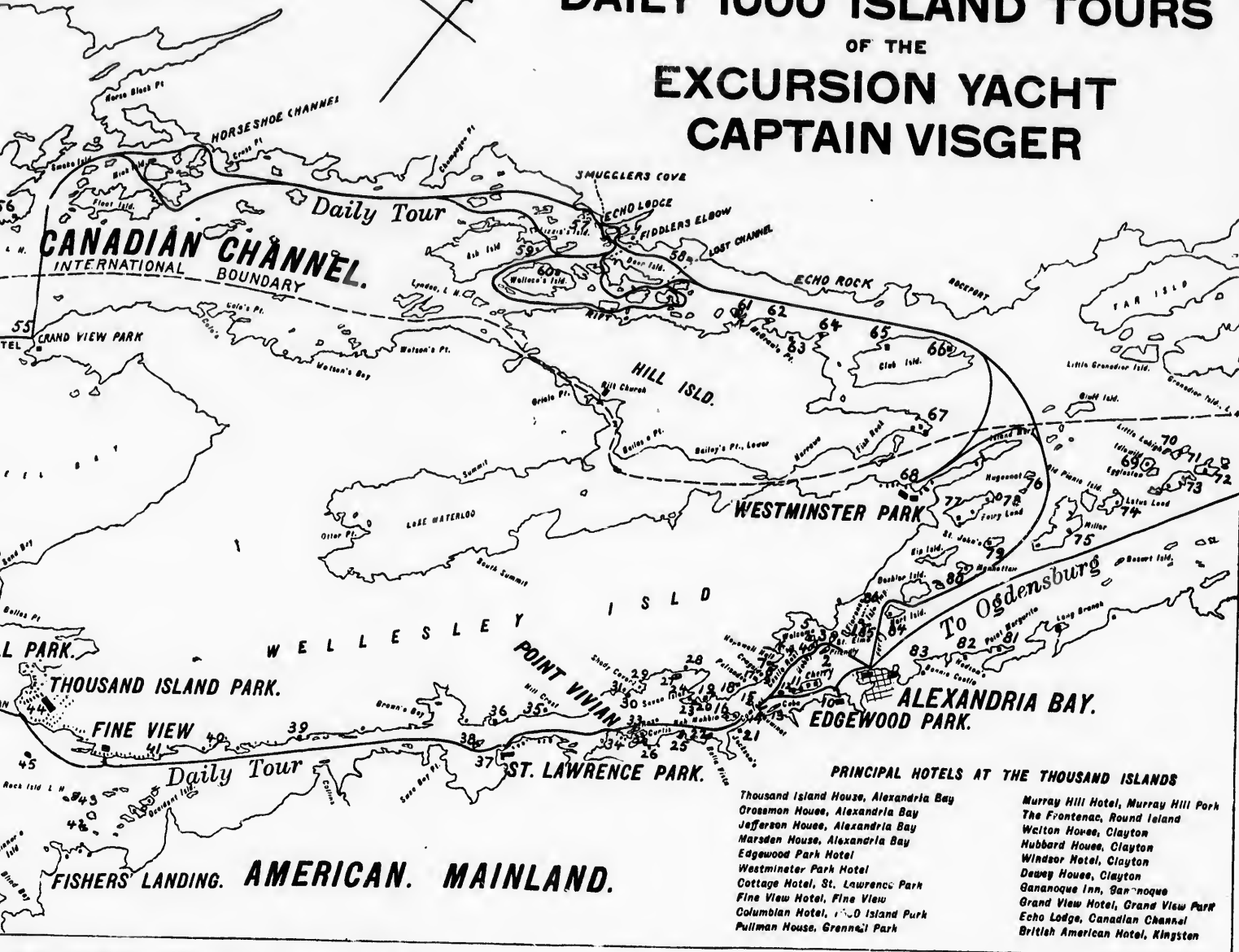
AMERICAN BUREAU OF PHYSICS
53 AVENUE C
YONKERS, N. Y.



THE THOUSAND ISLANDS, SHOWING ROUTES OF

DIAN MAINLAND.

DAILY 1000 ISLAND TOURS OF THE EXCURSION YACHT CAPTAIN VISGER



PRINCIPAL HOTELS AT THE THOUSAND ISLANDS

Thousand Island House, Alexandria Bay
 Crossman House, Alexandria Bay
 Jefferson House, Alexandria Bay
 Marsden House, Alexandria Bay
 Edgewood Park Hotel
 Westminster Park Hotel
 Cottage Hotel, St. Lawrence Park
 Fine View Hotel, Fine View
 Columbian Hotel, Ogdensburg
 Pullman House, Grenville Park

Murray Hill Hotel, Murray Hill Park
 The Frontenac, Round Island
 Welton House, Clayton
 Hubbard House, Clayton
 Windeor Hotel, Clayton
 Dewey House, Clayton
 Gananoque Inn, Gananoque
 Grand View Hotel, Grand View Park
 Echo Lodge, Canadian Channel
 British American Hotel, Kingston

ROUTES OF THE STEAM YACHT CAPTAIN VISGER.

THE BETTER CLASSES

The Better Classes is a collection of essays and articles that explore the lives and experiences of individuals from the upper echelons of society. The authors provide a detailed and often critical look at the social structures, values, and challenges that define this segment of the population. The work is both a social critique and a historical record, offering readers a unique perspective on the complexities of wealth and power.

CAPTAIN VISGER'S STANDARD GUIDE

TO THE

THOUSAND ISLANDS

WITH FISHING AND EXCURSION MAP

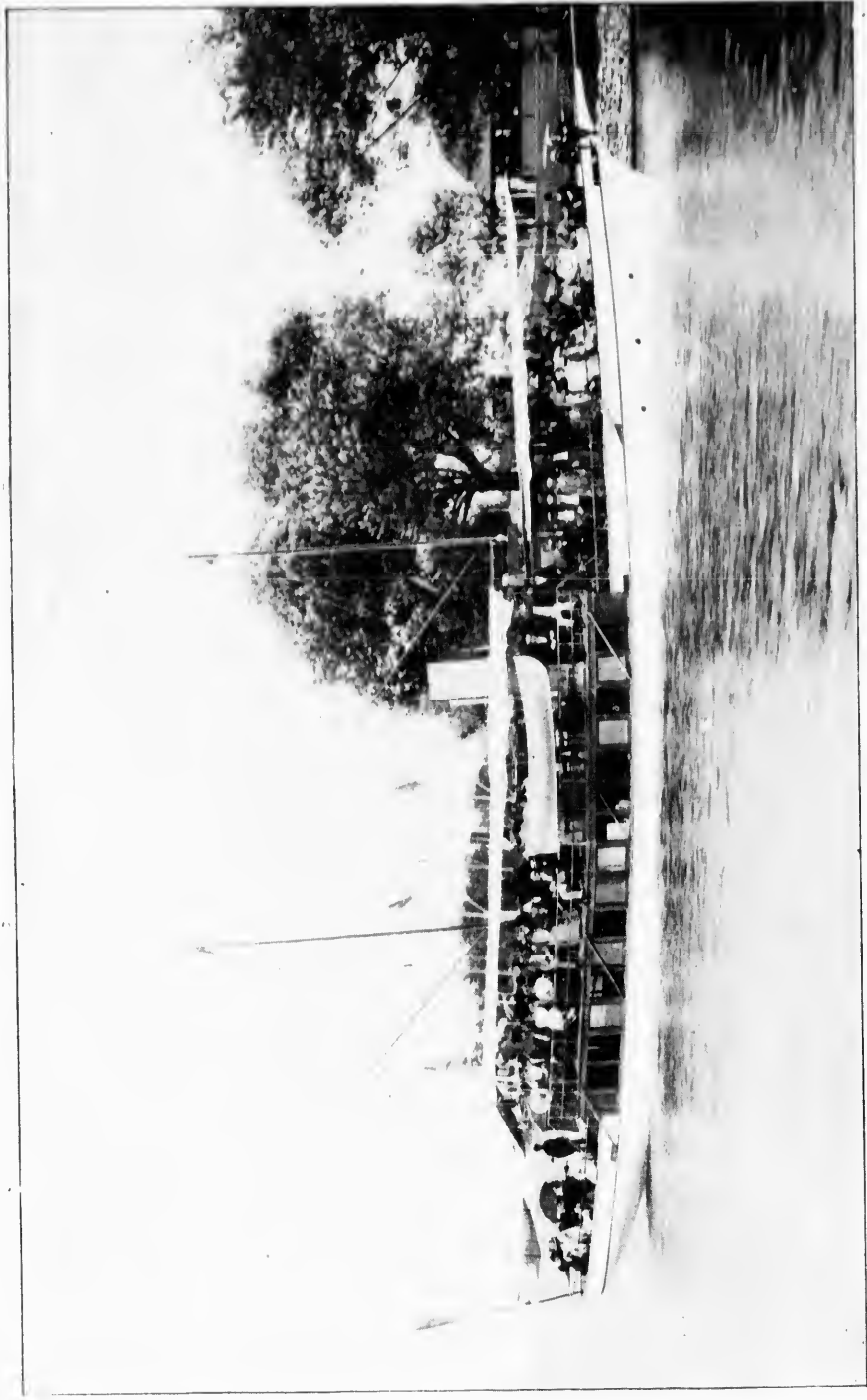


The Captain Visger Going Through London's Rift.

Published by WALTER L. VISGER, Alexandria Bay.

Copyrighted by WALTER L. VISGER, 1898.

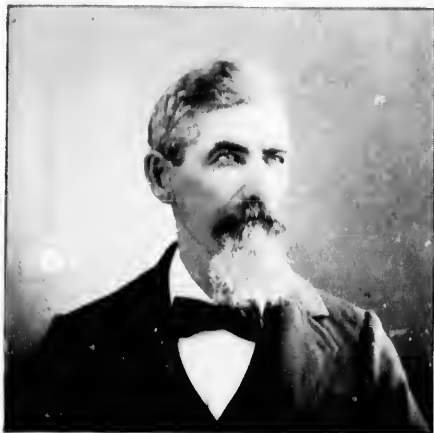
THE MASON PRESS, SYRACUSE, N. Y.



Ready for the Grand Tour.

AMONG THE THOUSAND ISLANDS

A Tour Upon the Captain Visger



CAPT. E. W. VISGER.

HIS swift and popular Rambler among the intricate channels of the lovely Thousand Islands bears the name of the

well-known steamboat captain who first opened to the public the famous circuit of the Islands by regular daily excursions. The Commander of the CAPTAIN VISGER is a son of this pioneer navigator.

The CAPTAIN VISGER has the proportions, grace and speed of a superb private steam-yacht. The boat has a length of 90 feet, is 13 feet beam and has a capacity of 110 passengers, with ample protection

below in case of stormy weather. With her light draught and easy handling the CAPTAIN VISGER is guided through many lovely scenes not heretofore revealed to the excursionist.

Twice daily the CAPTAIN VISGER leaves Alexandria Bay during the summer season, making a tour of 40 miles, which includes stops at all important points among the Islands, and gives a complete panorama of all the magnificent natural attractions and hundreds of splendid summer homes which are the admiration of all visitors.

The morning tour leads up the American Channel to Clayton, thence through Eel Bay and along the Canadian main shore, where are grouped the most beautiful of the wild Canadian islands. The afternoon tour begins at Clayton and reverses the direction. The itinerary following is that of the forenoon tour, the places named being designated by numbers upon the accompanying map. Those using this list for reference in the afternoons should read the list backwards.



Alexandria Bay.

OPPOSITE ALEXANDRIA BAY.

IMMEDIATELY across from the starting point is a group of magnificent villas, each upon a separate islet or point, forming a superb picture. Other beautiful properties occupying the chain of islands extending down the river, will be passed upon the return trip.

- No. 1. FLORENCE ISLAND. H. S. Chantler, Brooklyn.
2. DEWEY ISLAND. E. W. Dewey, New York City.
3. ST. ELMO ISLAND. N. W. Hunt, Brooklyn.
4. NOBBY ISLAND. Henry R. Heath, Brooklyn. This place is just behind Dewey Island. The CAPTAIN VISGER usually passes between them. Upon the site of Mr. Heath's beautiful cottage the first summer home among the islands was located. It was built by Mr. Heath in 1870.
5. WELCOME ISLAND. The Thousand Island Club Casino and Yacht Club.
6. CASTLE REST. Built by the late Geo. M. Pullman of Chicago, and now owned by his daughter, Mrs. Frank Lowden, Chicago.
7. HOPEWELL HALL. Wm. C. Browning, New York City. A beautiful home, set high upon a crag and embellished with a wealth of flowers, probably unequalled in America.
8. CAMP ROYAL. Rev. Royal H. Pullman, Baltimore. A gentleman who has summiered here under canvas for many years.
9. Adjoining CAMP ROYAL is the spot, marked by a fine pine tree, where Miss Clara Barton, the famous head of the Red Cross Society in America, makes her summer bivouac.

IN THE AMERICAN CHANNEL.

10. Across upon the mainland is EDGEWOOD PARK, its handsome hotel and private cottages.



p of
ning
the
upon

ce is
asses
stage
was

and

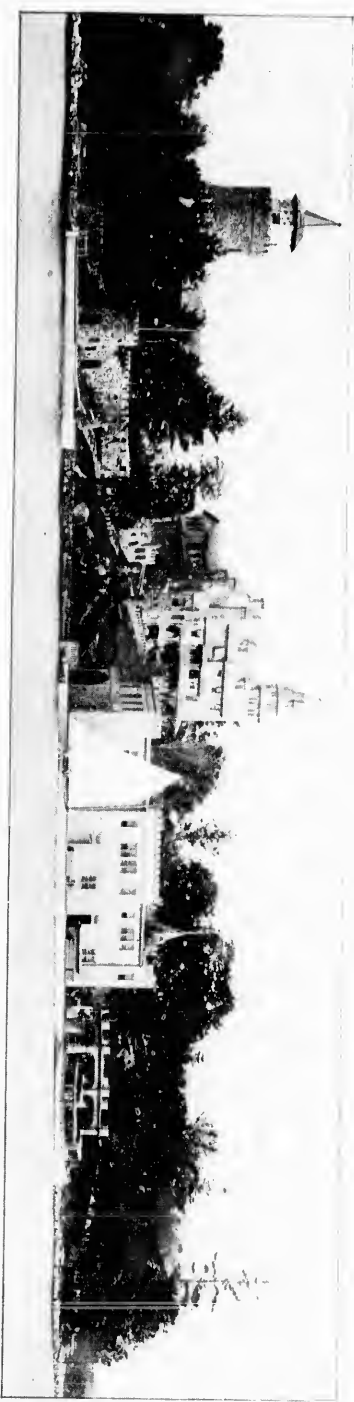
ago,
ago.

. A
with a

ntle-
cs.

tree,
Cross

some



Heart Island, Owned by Mr. Geo. C. Boldt.

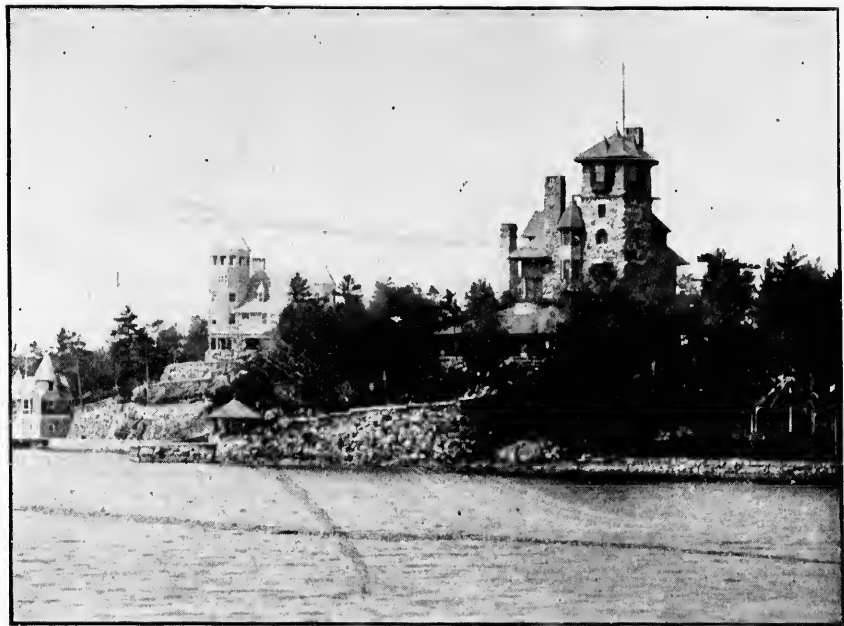


Casino of the Thousand Island Club. Welcome Island.



Channel Between Dewey and St. Elmo Islands.

- No. 11. Just in front of it is CHERRY ISLAND, containing four cottages respectively owned as follows : INGLESIDE, Mrs. G. B. Marsh, La Porte, Indiana (at the foot of the island); CASA BLANCA, Luis Marx, New York; STUYVESANT LODGE, J. T. Easton, Brooklyn, and SUNNYSIDE, Rev. Geo. Rockwell (Estate), Tarrytown, N. Y.
12. THE DEVIL'S OVEN. A remarkable rock owned by Mr. Henry R. Heath, Brooklyn.
13. CUBA ISLAND (near the mainland and very like in shape to its tropical namesake). Mrs. Michael Chauncey, Brooklyn.
14. WAUWINET. C. E. Hill, Chicago.
15. STONY CREST. S. R. Van Duser, Newburgh, N. Y. Formerly owned by H. H. Warner, of Rochester. It is located in mid-stream.
16. COMFORT ISLAND. Occupied by two fine properties, the lower one being that of Mr. A. E. Clark, of Chicago, and the upper, NEH MAHBIN, which is detached by a small artificial channel, that of Jas. H. Oliphant.
17. Upon Wellesley Island, facing the main channel, are CRAIGSIDE, H. A. Laughlin, Pittsburg, and
18. PALISADES, G. T. Rafferty, Pittsburg.



Castle Rest, built by the late Geo. M. Pullman.



Hopewell Hall, owned by Mr. Wm. C. Browning.

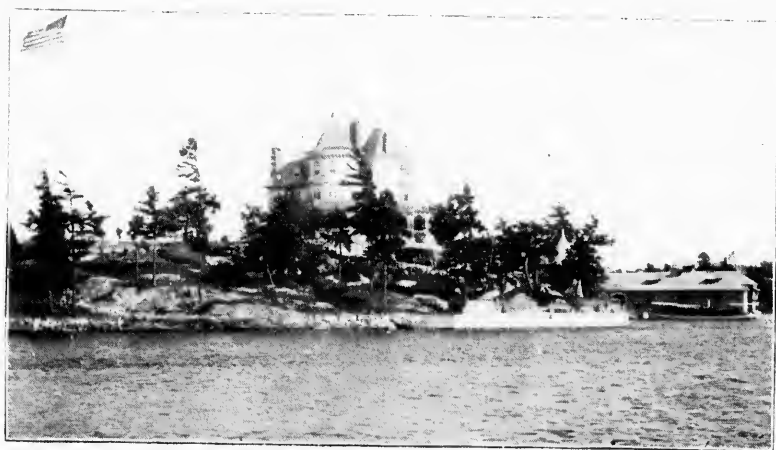
- No. 19. IDLEHURST. W. M. Lambie, Theresa, N. Y.
20. LOUISIANA POINT. J. W. Johnson, Plainfield, N. J., and are also upon Wells Island.
21. KEEWAYDEN, J. W. Jackson, Plainfield, N. J., is upon a beautiful promontory of the mainland, opposite Neh Mahbin.
22. BELLA VISTA LODGE, Wm. Chisholm, Cleveland, O., stands upon a grassy point of the mainland.
23. AUF WIEDERSEHN. A new cottage with an extensive wharf above Louisiana Point. D. H. Scott, of Watertown.
24. SEVEN ISLES. Hon. Bradley Winslow, Watertown, N. Y.
25. LINDENHOF. Frank Ritter, Rochester, N. Y. Upon the mainland, just above, is
26. ALLEGHENY POINT. J. S. Laney, Cleveland, O.

In Dinsmore Bay, Wells Island, are:

27. ELSINORE, Mrs. F. A. McAfee, New Haven, Conn., and
28. DELFT HAVEN, Gen. J. B. Van Petten, Claverack, N. Y.
29. SHADY COVERT. B. J. Maycock, Buffalo.
30. ISLAND ROYAL. Royal E. Dean, New York City.
31. EDANISTA. Dr. Thos. Wilson, Claverack, N. Y.
32. GIPSEY POINT. J. M. Curtis, Cleveland, O.
33. ROSE ISLAND. Hon. H. P. Rose, Cleveland, O.
34. POINT VIVIAN. A pleasant little settlement occupied mostly by residents of near-by towns.
35. HILL CREST. J. H. Shields, Philadelphia.
36. HATNELL POINT. Dr. H. D. Payne, Watertown, N. Y.
37. ST. LAWRENCE PARK (formerly called Central Park), with its hotels and several attractive cottages set in an abundant grove. This is one of the most pleasant and homelike points upon the river. The late Hon. C. W. Hackett, Utica, N. Y.; Hon. Chas. R. Skinner, State Supt. of Public Instruction, Albany, N. Y.; Judge P. C. Williams, W. G. Williams, J. T. Moffatt, C. H. Remington and B. B. Taggart of Watertown, have long had cottages here.

No. 38. ST. HELENA ISLAND. H. Stillman, of Oswego, who has suggested the Napoleonic idea by mock redoubts commanding the channel. A short distance up the river, above the last-named point, and upon the shore of Wellesley Island, is the site of McDonnell's Wharf, where the Steamer Sir Robert Peel was burned by "patriots" upon the night of May 30, 1838. This was one of the many exciting incidents of the border disturbances of that period.

39. "ISLAND KATE," a picturesque spot occupied by a small but handsome cottage, is the home of G. W. Lascelle, of New Haven, Conn.



Keewayden, owned by J. W. Jackson, Plainfield, N. J.

40. At "JOLLY OAKS" Messrs. John Norton and O. T. Green, of Carthage, N. Y., and the family of Hon. W. W. Butterfield have cottages.

41. "WAVING BRANCHES" is a pleasant group of cottages occupied by residents of this part of the State.

Many small cottages are ranged along the shady margin of Wellesley Island below Fine View Hotel. This has long been a popular resort, and commands, as its name indicates, a beautiful outlook.

Opposite the FINE VIEW SETTLEMENT is a group of picturesque islands, several of which contain cottages, the largest of which is

42. ISLE OF PINES. John Cooper, New York City.

- No. 43. **ROCK ISLAND** contains a lighthouse guarding one of the most contracted and dangerous points upon the line of navigation. The **CAPTAIN VISGER** turning here to the right, after touching at **FINE VIEW**, passes between two shoals just upon the surface, and heads for the wharf at **THOUSAND ISLAND PARK**, the most populous place among the islands.
44. **THE COLUMBIAN HOTEL**, located here, is one of the largest and best known of the Island houses. Several hundred cottages, some of them costly and tasteful, range along the river front or face the inland avenues.
45. **CASTLE FRANCES**, opposite "The Park," is owned by Wm. J. Serrell, Bayonne, N. J.
46. **THE PULLMAN HOUSE**, another attractive hotel, beautifully situated, is the next regular stop, and just above it is
47. **GRENELL PARK**, containing about thirty cottages and a pretty chapel. Among the cottages is **JERSEY HEIGHTS**, upon a lofty perch just above the Pullman House, owned by Mrs. L. L. Carlisle, of Newark, N. J.; **Riverleigh**, upon the point owned by L. E. Curtis, of New York; **Kirmess**, owned by T. B. Keer, Englewood, N. J.; these two are connected by a little rustic bridge; and the **BUNGALOW**, upon the summit of the island, owned by P. M. Sharples, of Westchester, Pa.
48. **MURRAY HILL HOTEL**, recently built, is the next call. This is a wildwood park, already well dotted with cottages set among the crags and verdure. The hotel is a large and elegant building, handsomely furnished. It should be mentioned that the **CAPTAIN VISGER** is the only steamer making the Island Ramble that touches regularly at the Pullman House, Grenell Island and Murray Hill Park.
49. **BASSWOOD ISLAND**. Thos. A. Gillespie, Pittsburg, Pa.
50. **WORONOCO**. Charles Terry, New York.
These are both new and costly places.
After passing these island homes the **CAPTAIN VISGER** steams across the broad open interval direct for
51. **ROUND ISLAND** and its large **HOTEL FRONTENAC**. Seventy cottages are ranged along the shores of this well known settlement. At the north end are the cottages of N. H. Freeman, Gouverneur, N. Y.; John Dunfee, Syracuse. **BROOKLYN HEIGHTS**, Chas. A. Johnson, New York. **SHADY LEDGE**, Frank H. Taylor, artist, Philadelphia, and **CHANNELSIDE**, C. C. Darby, of Cortland, N. Y. Above the steamer wharf are, among many ranged along the shore,



View from Echo Lodge.

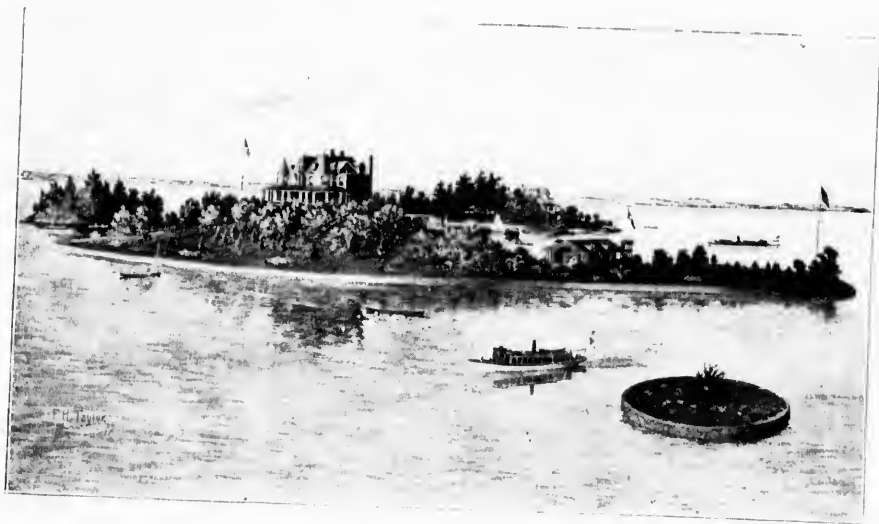
CARPE DIEM, Mrs. Jas. Eaton, Syracuse, those of L.V. Rathbun, Rochester; Geo. M. Barnes, Syracuse; Anthony Lamb, Syracuse; E. M. Allowelt, Syracuse; Fred Frazer, Syracuse; F. M. Metcalf, Westmoreland, N.Y.; E. M. Henderson, Wheatport, N. Y.; Mrs. S. B. Kirk, Syracuse;

Ex-Mayor Kirk, Syracuse, and at the head, ETHELRIDGE, Dr. Geo. D. Whedon, Syracuse; Jacob Hays, New York; H. Van Wagenen, New York; Congressman J. J. Belden, Syracuse, and N. A. St. John, of Binghamton, N. Y.

- No. 52. CLAYTON, the *Entrepot* of the Islands, is a busy place in summer. It is the terminus of the R. W. & O. Railroad, and has several good hotels, the Hubbard, Walton and Windsor, all being popular.
53. PROSPECT PARK, upon the shapely point above Clayton. The WOODLANDS, the villa of Mrs. Alexander Mitchell, of Florida, with several other fine cottages, are located here.
54. Opposite Clayton is CALUMET ISLAND, which with its magnificent sandstone residence, ornate boat-house and varied improvements made by Mr. Chas. G. Emery, of New York, is probably the most costly place upon the river.

Calumet is seen with especial advantage from the CAPTAIN VISGER, which approaches close to its sea walls in passing. The beautiful steam yacht Nina, a house-boat and two naphtha launches, with numerous trim skiffs may be seen in the fairy bay as we glide past. Mr. Emery owns a number of other islands, among them Robbins, upon which he has established a fine farm, orchards and green houses.

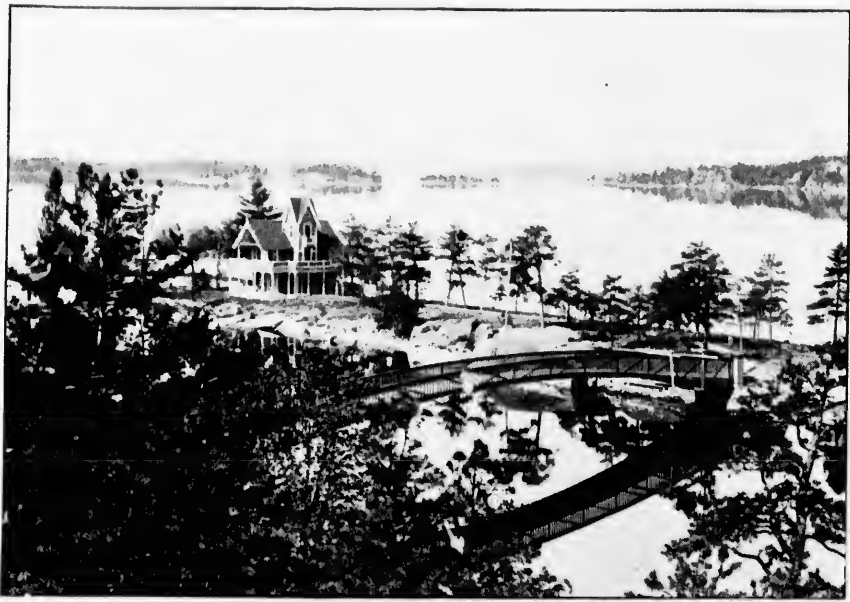
The CAPTAIN VISGER now heads away through the channel leading into Eel Bay and toward Canada. The summer Venice of wealthy Americans is left behind and primeval nature surrounds us. Camping parties and fishing skiffs are seen in the



Calumet Island, owned by Chas. G. Emery.

shadows of the wildwood, where many a smoke-wreath tokens the cooking of sylvan dinners by the oarsmen after the morning's catch. One of the prettiest of these camp places is at Swiftwater Point, another at Point Anjier, and in Eel Bay at Elephant Rock and Picnic Point. For a number of years the famous American Canoe Association has held its annual August camp and races at Delaney's Point, but this season (1899) it goes to HAY ISLAND in Canadian waters just opposite GANANOQUE, ONT. Seventy acres of the ground at the foot of Grindstone Island have been bought by the State Forestry Commission for a public reservation. Similar purchases are being made elsewhere among the islands.

- No. 55. Stop is made upon signal at GRAND VIEW PARK, a small but beautifully located settlement at the southwest end of big Wellesley Island. A little distance off shore runs the border line of Canada. Through the Narrows at the lighthouse upon the left is seen the Canadian town of Gananoque, a place of 3000 people. Four miles away to the right is the Lyndoc lighthouse standing at the entrance of the most beautiful group of islands of the whole river. Before turning hither our steam yacht explores the romantic channels of the Stave Island group, and courses along close to the Canadian main shore for eight miles.
56. STAVE ISLAND is owned by A. B. Chaffee and others at Montreal. Previous to 1897 no boat engaged upon the Island Ramble had ever essayed this route, and it was only after careful soundings that it was found practical to run through. After passing Stave, Smoke, Float and Sugar Islands, with glimpses of intri-



Little Lehigh Island and Bridge Connecting it with Sport Island.

cate and entrancing channels everywhere, the yacht crosses a small bay and heads directly for the main shore. There is no apparent outlet and the prospect seems imminent for the CAPTAIN VISGER to come to a stop in a farmer's garden dead ahead. By a sudden turn to the right, however, we enter Horseshoe Channel. Upon the left is the Glen House, W. W. Shipman, proprietor. Our course is now in a generally northeastern direction, passing Champagne Point and Ivy Lea. With slowed engines we enter that wonderfully narrow channel, THE NEEDLE'S EYE; from either side of the boat a person might leap ashore. Leaving this beautiful group of islands we head for the Canadian main shore at a point where there seems to be no outlet. Again with slowed engines we enter the narrow, tortuous channel called OUT OF SIGHT. There is but one place in the whole river that surpasses this in the grandeur of its natural beauty, THE WONDERFUL RIFT, which we will soon enter.

No. 57. ECHO LODGE, a pleasant hotel conducted by O. L. Potter.

From Champagne Point to Echo Lodge, no excursion steamer has ever before ventured, presumably from the belief that this channel through a dense group of islands was too intricate for navigation. This lovely link in the perfect island tour has now been added by the CAPTAIN VISGER.

The constant succession of lovely nooks and channels in this



The Captain Visger passing through the "Needle's Eye."

vicinity amaze and delight the stranger. Many of these, like the "Needle's Eye" (shown in the illustration) and "Landon's Rift" (the scene upon the cover), are to be seen from the deck of the **CAPTAIN VISGER** only.

Numbers of pretty summer homes have been built recently in this neighborhood, among them one on **MANAWASCA ISLAND**, owned by Andrew Devine, Brooklyn. The **CAPTAIN VISGER** passes almost directly under the veranda of this beautiful summer home.

- No. 58. **SURVEYOR'S ISLAND**. Donald Horton, Toronto, Ont.
59. "THE SHANTY." Upon Ash Island, owned by Jos. Davidson, of Ottawa.
60. **DERRY CARNE**, upon Wallace Island, W. D. Morris, Ottawa.
61. **NIMES POINT** is owned by A. L. Causse, of New York.
62. **INDIANOLA** is the property of F. J. King, of Brooklyn.
63. **SUMMER REST** belongs to M. W. Ferris, New York.
64. **FAIRJOLINE**, the lovely cottage of Mr. D. F. Fairchild, of Leavenworth, Kansas.

Upon Club Island are

No. 65. COMBERMERE, the villa of Mr. J. A. Skinner, of Newark, N. J.
At the foot of the Island is a lofty cottage.

66. Mrs. F. Taylor, of New York, has a fine cottage here, in a beautiful grove of pines. ROCKPORT is upon the left, and ahead is seen the lighthouse at Grenadier Island, beyond which the Canadian and American Channels come together.

67. Upon the foot of Hill Island, owned by Mrs. J. R. Sargent, Mrs. J. W. Slauson, of Middleton, N. Y., and Mrs. Bowie Dash, of Spuyten Duyvel, N. Y.

68. WESTMINSTER PARK with its large hotel is at the foot of Wellesley Island. Between Hill and Wellesley islands is the entrance to the Lake of the Isles, or "Lake Waterloo," as it is locally known. It is accessible only by rowboats and small naphtha launches. A steam ferry-boat plies regularly between Westminster Park and Alexandria Bay.

The international boundary line is crossed with slowed engine, not because of any danger of getting the line tangled up in the propeller, but because the water here is shallow.

To the left of the CAPTAIN VISGER'S course is a group of noted places, among them

69. IDLEWILD I. Mrs. R. H. Eggleston, New York.

70. LITTLE LEHIGH. W. A. & R. H. Wilbur, Bethlehem, Pa.

71. SPORT I. E. P. Wilbur, Bethlehem, Pa.

72. ARCADIA. S. A. Briggs, Passadena, Cal.

73. SUMMERLAND, Rochester Colony.

This year a beautiful summer residence has been built on INA ISLAND, just above Summerland, by Arthur T. Hagan, of Rochester, N. Y.

74. LOTOS LAND, G. H. Robinson, New York.

The steamer passes to the southward between

75. DEER I. Geo. D. Miller, Albany, who has several cottages located here, and

76. HUGUENOT I. L. Hasbrouck, Ogdensburgh, N. Y.

77. FAIRYLAND, a large island to the right, contains three handsome cottages of the late Peter Hayden and Charles and William Hayden, of Columbus, O., and at the northern end of this lovely domain is

78. LITTLE FRAUD. Also owned by Wm. Hayden.

79. ST. JOHN'S ISLAND, Hon. Chas. Donahue, New York, has long been an admired feature of the river.

- No. 80. **MANHATTAN I.**, J. L. Hasbrouck and Hon. J. C. Spencer, New York, is also a notable and richly adorned property. Upon the American mainland, below Alexandria Bay, are :
81. **POINT MARGUERITE**, Mrs. E. Anthony, New York;
82. **THE LEDGES**, Mrs. S. E. R. Hudson, New York, and
83. **BONNIE CASTLE**, Mrs. J. G. Holland (estate), New York.

These are all costly and beautifully situated summer residences, the last named being of interest as the home, during many years, of Dr. J. G. Holland, the author, poet and editor.

84. **HEART ISLAND**, Geo. C. Boldt, New York, is the most recent and elegant addition to the group of Bay places. Here the genial proprietor of the Waldorf and Astoria Hotels has created a marvelous sylvan home upon a long neglected island. The **CAPTAIN VISGER** is the only boat which makes a circuit of this island.
85. **ISLE IMPERIAL**, G. T. Rafferty, Pittsburg—a charming spot—and
86. **LINLITHGOW**, Mrs. R. Livingston, New York, complete the list, and the **CAPTAIN VISGER** steams rapidly to its berth at Alexandria Bay, from which the boat goes on at once to land passengers at all points as far as Clayton, from which the afternoon tour starts.

(Passengers going to the Parks and Clayton will find the list of islands above Alexandria Bay on page 4.)

It is impossible to detail all of the natural and artificial features of this poetic voyage. Perhaps it is better to leave many things to the discovery of the summer voyager. It is a tour to be enjoyed many times, under all of the varying conditions of sky and water. It never wearies one, and its charms are recalled when the memories of other features in a northern journey have faded through a lapse of years. This little book should be kept as a constant reminder of a happy holiday spin upon a jaunty yacht through scenes unsurpassed for tranquil charm and poetic suggestions in all the world.



Steam Yacht Captain Visger at the "Fiddler's Cove."

The...

Windsor Hotel

MONTREAL, CANADA

RATES \$4.00 TO \$5.00 PER DAY

AMERICAN PLAN ONLY



ITS cool, airy rooms, its magnificent appointments, palatial corridors, parlors and dining room, and its perfect cuisine, hold a world-wide reputation, and it is recognized as the only Hotel in the City of Montreal constructed to supply the demands of pleasure seekers. . .

THE
WINDSOR
STANDS
UNRIVALLED

SITUATED in the centre of the City, facing the famous Dominion Square. Electric Street Cars pass the door for all parts of the City.

W. S. WELDON, MANAGER

REPRESENTED AT ALEXANDRIA BAY BY
MR. FRED HOWARTH

THE LARGEST RETAIL FUR ESTABLISHMENT IN THE WORLD

Chs. Desfardens & Cie

1533 TO 1537 ST. CATHERINE ST.

MONTREAL

EXHIBITION OF **FURS**
GOING ON ALL THE SUMMER

YOUR VISIT RESPECTFULLY SOLICITED.

Our Seal Garments are World Renowned.

GRAND DISPLAY OF INDIAN CURIOSITIES.



THE CAPTAIN VISGER PASSING THROUGH THE LOST CHANNEL.

