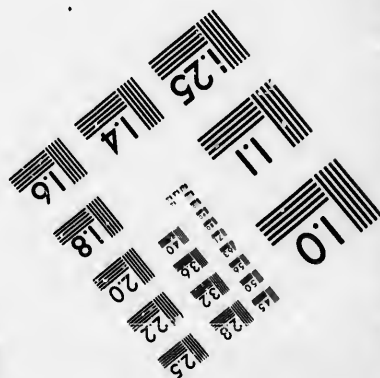
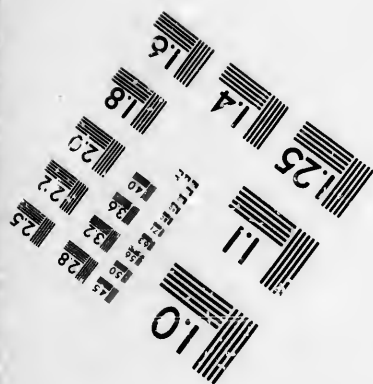
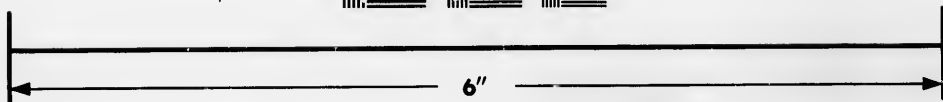
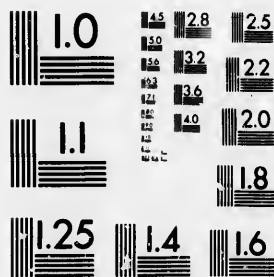


**IMAGE EVALUATION
TEST TARGET (MT-3)**



**Photographic
Sciences
Corporation**

23 WEST MAIN STREET
WEBSTER, N.Y. 14580
(716) 872-4503

18
20
22
25
28
32
36

**CIHM/ICMH
Microfiche
Series.**

**CIHM/ICMH
Collection de
microfiches.**



Canadian Institute for Historical Microreproductions / Institut canadien de microreproductions historiques

01
51
55

© 1985

Technical and Bibliographic Notes/Notes techniques et bibliographiques

The Institute has attempted to obtain the best original copy available for filming. Features of this copy which may be bibliographically unique, which may alter any of the images in the reproduction, or which may significantly change the usual method of filming, are checked below.

L'Institut a microfilmé le meilleur exemplaire qu'il lui a été possible de se procurer. Les détails de cet exemplaire qui sont peut-être uniques du point de vue bibliographique, qui peuvent modifier une image reproduite, ou qui peuvent exiger une modification dans la méthode normale de filmage sont indiqués ci-dessous.

- Coloured covers/
Couverture de couleur
- Covers damaged/
Couverture endommagée
- Covers restored and/or laminated/
Couverture restaurée et/ou pelliculée
- Cover title missing/
Le titre de couverture manque
- Coloured maps/
Cartes géographiques en couleur
- Coloured ink (i.e. other than blue or black)/
Encre de couleur (i.e. autre que bleue ou noire)
- Coloured plates and/or illustrations/
Planches et/ou illustrations en couleur
- Bound with other material/
Relié avec d'autres documents
- Tight binding may cause shadows or distortion along interior margin/
La reliure serrée peut causer de l'ombre ou de la distorsion le long de la marge intérieure
- Blank leaves added during restoration may appear within the text. Whenever possible, these have been omitted from filming/
Il se peut que certaines pages blanches ajoutées lors d'une restauration apparaissent dans le texte, mais, lorsque cela était possible, ces pages n'ont pas été filmées.

- Coloured pages/
Pages de couleur
- Pages damaged/
Pages endommagées
- Pages restored and/or laminated/
Pages restaurées et/ou pelliculées
- Pages discoloured, stained or foxed/
Pages décolorées, tachetées ou piquées
- Pages detached/
Pages détachées
- Showthrough/
Transparence
- Quality of print varies/
Qualité inégale de l'impression
- Includes supplementary material/
Comprend du matériel supplémentaire
- Only edition available/
Seule édition disponible
- Pages wholly or partially obscured by errata slips, tissues, etc., have been refilmed to ensure the best possible image/
Les pages totalement ou partiellement obscurcies par un feuillet d'errata, une pelure, etc., ont été filmées à nouveau de façon à obtenir la meilleure image possible.

Additional comments: / This copy is a photoreproduction.
Commentaires supplémentaires:

This item is filmed at the reduction ratio checked below/
Ce document est filmé au taux de réduction indiqué ci-dessous.

10X	14X	18X	22X	26X	30X
<input type="checkbox"/>	<input type="checkbox"/>	<input type="checkbox"/>	<input type="checkbox"/>	<input checked="" type="checkbox"/>	<input type="checkbox"/>
12X	16X	20X	24X	28X	32X

The copy filmed here has been reproduced thanks to the generosity of:

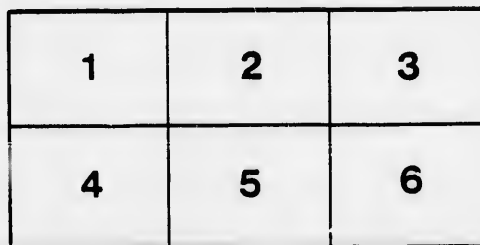
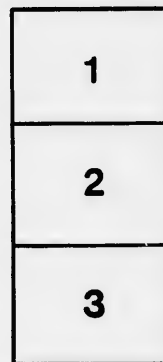
D. B. Weldon Library
University of Western Ontario
(Regional History Room)

The images appearing here are the best quality possible considering the condition and legibility of the original copy and in keeping with the filming contract specifications.

Original copies in printed paper covers are filmed beginning with the front cover and ending on the last page with a printed or illustrated impression, or the back cover when appropriate. All other original copies are filmed beginning on the first page with a printed or illustrated impression, and ending on the last page with a printed or illustrated impression.

The last recorded frame on each microfiche shall contain the symbol \rightarrow (meaning "CONTINUED"), or the symbol ∇ (meaning "END"), whichever applies.

Maps, plates, charts, etc., may be filmed at different reduction ratios. Those too large to be entirely included in one exposure are filmed beginning in the upper left hand corner, left to right and top to bottom, as many frames as required. The following diagrams illustrate the method:



L'exemplaire filmé fut reproduit grâce à la générosité de:

D. B. Weldon Library
University of Western Ontario
(Regional History Room)

Les images suivantes ont été reproduites avec le plus grand soin, compte tenu de la condition et de la netteté de l'exemplaire filmé, et en conformité avec les conditions du contrat de filmage.

Les exemplaires originaux dont la couverture en papier est imprimée sont filmés en commençant par le premier plat et en terminant soit par la dernière page qui comporte une empreinte d'impression ou d'illustration, soit par le second plat, selon le cas. Tous les autres exemplaires originaux sont filmés en commençant par la première page qui comporte une empreinte d'impression ou d'illustration et en terminant par la dernière page qui comporte une telle empreinte.

Un des symboles suivants apparaîtra sur la dernière image de chaque microfiche, selon le cas: le symbole \rightarrow signifie "A SUIVRE", le symbole ∇ signifie "FIN".

Les cartes, planches, tableaux, etc., peuvent être filmés à des taux de réduction différents. Lorsque le document est trop grand pour être reproduit en un seul cliché, il est filmé à partir de l'angle supérieur gauche, de gauche à droite, et de haut en bas, en prenant le nombre d'images nécessaire. Les diagrammes suivants illustrent la méthode.

trata
o

pelure,
à

H. J. Sobel read -

A STATEMENT of the many Advantages to be derived to the Canadas, and District of Brock in particular, by the construction of the Railway from the Town of Woodstock to Lake Erie,—say Forty Miles in length.

1. This Railway will confer the greatest benefit to the inhabitants of the above district, which so abounds with Pine timber that, without some means for its sale or removal, the lands on which it grows will remain a wilderness for ever, to the great injury of this fine district, as no one will purchase or clear such Pine lands, from their stumps remaining undecayed for fifty years; and the labour of chopping up and burning such enormous trees prevents their location being coveted by even the poorest emigrant. But with an easy communication by a cheap Railway, permanently constructed with Payne's patent metalized sleepers, to Lake Erie, this Pine can be transported from the Canadian shores across the lake, and find ready purchasers to almost any amount in the opposite American states, which by its sale would soon clear these gloomy and inhospitable tracts, and exchange their wildness and infertility to a source of agricultural abundance, and social intercourse.
2. This short road will give permanent employment and food to full six thousand workmen, independently of those who may construct the Railway, who will then find full occupation in cutting down and bringing these Pine and Oak trees to the 177 Saw and 6 Steam Mills, to be converted into plank.
3. The sale of this plank to the Americans, who so much require it for the building of their numerous daily increasing towns on the whole of their northern frontier, will bring into this inland district from £100,000. to even £200,000. a year, for the price of this now useless timber alone, as the Americans have not any Pine, Oak, or Black Walnut: while this trade will convert a somewhat radical and discontented district into greater loyalty and repugnance to annexation.
4. It will create the immediate erection of ten or twelve considerable towns on the line of road, and many more will arise near it, with numerous Protestant Churches, and enlightened Clergymen of the English Church settled to attend them, who would guide the mind, and form the Christian principles of the rising generation to a right source. And as this Company propose to erect Steam Mills and apparatus, to convert *Pine and Beech Wood* into Metalized building blocks, of every size, for the construction of these churches, towns, stations, enclosures, rails, pavements, gates, embankments, drains, bridges, aqueducts, viaducts, culverts, wells, &c. &c., which can be constructed at *one-tenth* the cost of any others of stone or brick, being warranted *proof* against decay, fire, air, or water, and equally beautiful to the eye, the avoidance of the tax for the insurance alone clearing the original cost in the course of *ten years*, would be a boon of such importance to still more quickly clear the forests to the North and South of Woodstock, and facilitate the *more elegant* construction of all erections, whether of cities, farms, or seats of gentlemen, to the improvement and appearance of the interior; that a century in *any other way* would fail to effect; and which would soon be adopted in all parts of this extensive country where these woods abound; rail and plank roads so formed, be held permanent from decay; with durable roadsteads for shipping, equally secured as if constructed of stone or brick, and if stuccoed not to be discernible in substance; which works would much increase the timber traffic of the said Railway with the Americans, who are deficient in such woods, and cannot take advantage of the process in consequence: and the method to secure these effects may be always cheaply guaranteed while the forests abound: more especially as every industrious person can easily build *his own house*, by such blocks of 2 and 3 feet lengths, without the cost of either masons or carpenters, but only of common day labourers to mix up the mortar and give aid, when required, to fix them *perpendicularly*, which *any one* can effect in a quarter of the time of other erections; the blocks, floors, &c. being so exactly cut by the Steam Mill that they can be united and fixed in their places by individual labour as truly as if effected by many hands (*and all secured without an iron nail*); plans and elevations for the work being supplied gratis.
5. This Railway will insure good markets to the whole interior contiguous to the district, as well as to itself, for all agricultural produce, and thereby cause a much greater influx of Emigrants, which without such a line, to give an impulse to clear the wilderness, would always remain stationary, and void of cultivation.
6. It would soon create good cross roads on or near the main line of Railway, from the numerous Saw and Flour Mills requiring them, as by these the Millers will more easily bring their produce to be transported by the main line to the Lake Erie, and thus benefit all classes of the district, without a general expense.
7. It will greatly cheapen the price of the plank timber to the American States, as well as to the Canadian inhabitants and the district, by the facility of its carriage, and *still bring* the same price to the Millers themselves as before the erection of the Railway.
8. It will convey the produce of the fisheries, to be established at Long Point, not only to the interior of the District, but to all other parts of the Province, by the Great Western Line, thereby giving cheap food to all classes, and be a great boon to poor

Emigrants who may be unemployed. This also will enrich the Railway by its carriage, and be a great luxury to all the inhabitants; while the Indians can bring their superabundant game to the interior, which is now lost, as from the heat of the summer this food requires to be quickly transported to prevent decay.

9. It will bring the tropical productions, from the West Indies, New Orleans, and other southern countries, to be consigned to Canada, by the Mississippi and Ohio Rivers, and many inhabitants also, by the Cleveland Canal, will be brought by the Company's Steam Boats, touching daily at that town; the above produce will find a ready sale in all parts of Canada.

10. It will promote the immediate formation of two desirable Harbours, on the northern side of Lake Erie, where there are not now any good Ports or Harbours, for the safety of shipping on both coasts.

11. These Harbours will encourage a greatly increased shipping and commerce, to the enrichment of the Western Province, as well as America, and to the general benefit of all the inhabitants of the Province.

12. It will greatly benefit the Great Western Canadian Railway, now erecting from Niagara to Sandwich and Detroit, in carrying the produce of the plank (cut from about 40 Saw Mills, including the new Mills to be erected), which will convey it from Burford and Blenheim to Woodstock by this Railway; from whence it will proceed by the Woodstock Line to Lake Erie, which otherwise would descend the Grand river, to the great loss of both Railways. And the profit on the carriage alone of this plank to the Great Western, at half a dollar per 1000 feet, will amount to £15,000. a year, at least.

13. The Woodstock Railway will be continued at no distant period to the town of Godrich, to open out a direct communication to Lakes Huron and Superior, and develop the great resources of these Lakes to Canadian and American enterprise, and to Europe; and augment the disposal of the Canada Company's lands in its direction; on which also a great many towns must arise, more quickly to colonize this part of the Province.

14. It will create a much finer climate in this interior beautiful country, and accelerate the clearing of the forests, and thus dissolve the ice on the edge of the Lakes Erie, St. Clair and Huron; render them navigable all the year round, and immeasurably enrich both Canada and America, by their continued, instead of partial navigation.

15. Is it not urgent that such an important work as the Woodstock Railway, which could accomplish so much good, enrich this part of the Province, and give general employment to a disheartened and distressed inland district, should be encouraged by the Government, if it be desirable to retain the Colony, where it could find ample room to settle all the distressed poor of Great Britain on the useless waste lands, which cry out in reproach to the Mother Country for its neglect, when there is room in this noble Province for ten generations of the poor, who by their location would increase the home commerce, and reciprocally supply it with all its raw materials, minerals, bread stuffs, &c., for the increase of the happiness and resources of both countries—for their everlasting union and strength, if the greatness of England be desirable to be upheld, and all her children and descendants made happy; when her increasing poor urgently implore help in their distress, and who could be so easily and cheaply relieved, while the nation boasts of being Christians, or have we "the form of godliness, but deny the power thereof." If this permanent settlement of the starving poor be longer neglected, as it can be demonstratively proved that they can be conveyed out most comfortably to Canada for £3. 12s. a head; kept 12 months for £12. 10s. (provisions being so cheap there), independently of allowing them £2. for clothing, by being located on ten acres each man, which are paid for, the price from the crops of which will liquidate the debt every second year, leaving ample provision for that year's food, and the means of purchasing every necessary subsequently, to establish them; while the Railways, made by the men themselves during this time, would pay from 12 to 15 per cent. ever after, for the general benefit of the Canadas, and which process may be applied to every Colony.

CANADA WEST.

WOODSTOCK & LAKE ERIE RAILWAY COMPANY

The Charter of which passed 27th of July, 1847.

Approved of by the Queen on the 15th of April, 1848. Granted for ever. To be completed in Ten Years.

To build two Ports, Steam Boats or other Vessels, in conjunction with Forty Miles of Railway, from the Town of Woodstock to the Lake Shore.

The seven Directors appointed will command the following patronage, and employ the poor in Canada to prepare the timber for 177 Saw Mills, propelled by water, with 6 Steam Saw Mills; the former of which will cut 6,000 feet per day, the latter double; and from the cheapness of its carriage by railway, to sell it to the Americans at about half its present price, to insure great traffic and profits (see the Prospectus).

1. They will grant ten agencies, of £150. a year salary; the agent to receive also six per cent. on the price of all timber sold, which will treble his income: the timber being paid for in cash.

2. One head Superintendent, to visit all these Agents weekly, and report their accounts to the Company. He will receive a salary of £700. a year, and contingent expenses.

3. Eleven Episcopalian Clergymen will be stationed at the eleven towns, and will be Rectors of the Churches, erected at each, for life; will only at first be in receipt of £150. a year, but as the towns increase, and the building lots are sold, in about ten years their salaries will be augmented to £700. a year each. (See the 10th Question in the Prospectus, how without cost to the Company this is insured.)

4. Eleven School Masters, with a salary of from one to five hundred a year, but till the town lots are sold will be uncertain. The above will have their houses built, with School-Houses, and Churches to hold 1000 persons.

5. Two Port Masters, with £300. a year, to be augmented as the port dues increase.

6. A Secretary in England, at £500. a year, to be increased to a £1000.

7. A Secretary in Canada, with a salary of £300. a year.

8. The seven Directors at first will only receive a salary of £150. a year, to be increased to £300.

9. A Banker will be chosen by the Directors, with whom the deposit for the shares will be placed. Many thousand pounds will be often left in his hands.

10. A consulting Engineer will also be appointed, to refer to in cases of need.

11. The Company will appoint a Superintendent of the Fisheries to be erected at Long Point, where thousands of large sturgeon and salmon trout may be taken, and may be sent to all parts of the world. His salary will be £300. a year, to be augmented to £500.

N.B. Any one who impartially examines the Prospectus, and the short distance of 40 miles from the town of Woodstock to Lake Erie, with a branch of 20 miles, cannot fail to be surprised that so many as 147 Saw Mills, propelled with water power (with 30 new ones to be erected on the commencement of the Railway), and 27 Flour Mills, and Cloth Mills, Smelting Mills and Tanneries, all propelled in like manner *by water*, could possibly be sustained on so short a route. And there are 150,000 Acres of Pine, Oak, and Black Walnut on or near the line of route, with Millions of Acres of the same to the north of Woodstock, which will insure to the Company immense traffic and great profit, as it is ascertained that the Americans will require *all* the plank these Mills can cut, independently of what may be transported by the Welland Canal to Europe, West Indies and other countries; also by the Erie Canal and Railway, and by the Cleveland Canal, to *all* parts of the world, which debouche from their two Harbours on the Lake Erie, on each of which Canals five Depôts will be placed.

