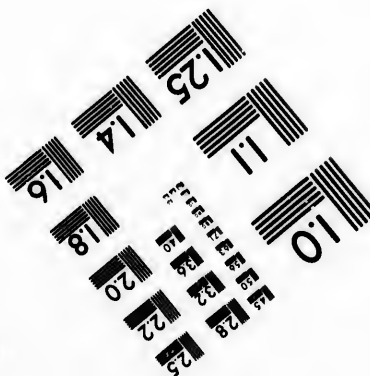
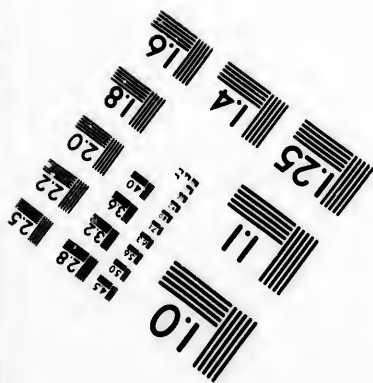
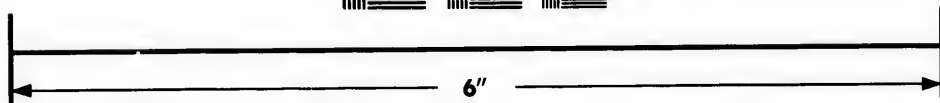
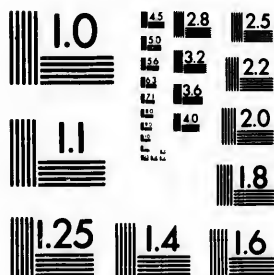


**IMAGE EVALUATION
TEST TARGET (MT-3)**



**Photographic
Sciences
Corporation**

23 WEST MAIN STREET
WEBSTER, N.Y. 14580
(716) 972-4503

1.5
1.8
2.0
2.2
2.5
2.8
3.2
3.6

**CIHM/ICMH
Microfiche
Series.**

**CIHM/ICMH
Collection de
microfiches.**



Canadian Institute for Historical Microreproductions / Institut canadien de microreproductions historiques

1.0
1.1
1.2
1.3
1.4
1.5
1.6
1.7
1.8
1.9
2.0
2.1
2.2
2.3
2.4
2.5
2.6
2.7
2.8
2.9
3.0
3.1
3.2
3.3
3.4
3.5
3.6
3.7
3.8
3.9
4.0
4.1
4.2
4.3
4.4
4.5
4.6
4.7
4.8
4.9
5.0

© 1982

Technical and Bibliographic Notes/Notes techniques et bibliographiques

The Institute has attempted to obtain the best original copy available for filming. Features of this copy which may be bibliographically unique, which may alter any of the images in the reproduction, or which may significantly change the usual method of filming, are checked below.

L'Institut a microfilmé le meilleur exemplaire qu'il lui a été possible de se procurer. Les détails de cet exemplaire qui sont peut-être uniques du point de vue bibliographique, qui peuvent modifier une image reproduite, ou qui peuvent exiger une modification dans la méthode normale de filmage sont indiqués ci-dessous.

- Coloured covers/
Couverture de couleur
- Covers damaged/
Couverture endommagée
- Covers restored and/or laminated/
Couverture restaurée et/ou pelliculée
- Cover title missing/
Le titre de couverture manque
- Coloured maps/
Cartes géographiques en couleur
- Coloured ink (i.e. other than blue or black)/
Encre de couleur (i.e. autre que bleue ou noire)
- Coloured plates and/or illustrations/
Planches et/ou illustrations en couleur
- Bound with other material/
Relié avec d'autres documents
- Tight binding may cause shadows or distortion along interior margin/
La reliure serrée peut causer de l'ombre ou de la distorsion le long de la marge intérieure
- Blank leaves added during restoration may appear within the text. Whenever possible, these have been omitted from filming/
Il se peut que certaines pages blanches ajoutées lors d'une restauration apparaissent dans le texte, mais, lorsque cela était possible, ces pages n'ont pas été filmées.
- Additional comments:/
Commentaires supplémentaires:

- Coloured pages/
Pages de couleur
- Pages damaged/
Pages endommagées
- Pages restored and/or laminated/
Pages restaurées et/ou pelliculées
- Pages discoloured, stained or foxed/
Pages décolorées, tachetées ou piquées
- Pages detached/
Pages détachées
- Showthrough/
Transparence
- Quality of print varies/
Qualité inégale de l'impression
- Includes supplementary material/
Comprend du matériel supplémentaire
- Only edition available/
Seule édition disponible
- Pages wholly or partially obscured by errata slips, tissues, etc., have been refilmed to ensure the best possible image/
Les pages totalement ou partiellement obscurcies par un feuillet d'errata, une pelure, etc., ont été filmées à nouveau de façon à obtenir la meilleure image possible.

This item is filmed at the reduction ratio checked below/
Ce document est filmé au taux de réduction indiqué ci-dessous.

10X	14X	18X	22X	26X	30X
<input type="checkbox"/>	<input type="checkbox"/>	<input type="checkbox"/>	<input checked="" type="checkbox"/>	<input type="checkbox"/>	<input type="checkbox"/>
12X	16X	20X	24X	28X	32X

The copy filmed here has been reproduced thanks to the generosity of:

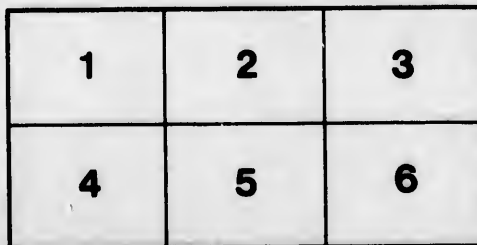
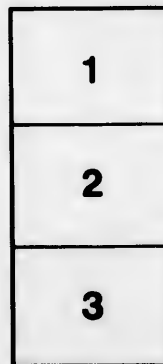
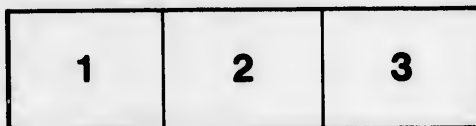
University of British Columbia Library

The images appearing here are the best quality possible considering the condition and legibility of the original copy and in keeping with the filming contract specifications.

Original copies in printed paper covers are filmed beginning with the front cover and ending on the last page with a printed or illustrated impression, or the back cover when appropriate. All other original copies are filmed beginning on the first page with a printed or illustrated impression, and ending on the last page with a printed or illustrated impression.

The last recorded frame on each microfiche shall contain the symbol \rightarrow (meaning "CONTINUED"), or the symbol ∇ (meaning "END"), whichever applies.

Maps, plates, charts, etc., may be filmed at different reduction ratios. Those too large to be entirely included in one exposure are filmed beginning in the upper left hand corner, left to right and top to bottom, as many frames as required. The following diagrams illustrate the method:



L'exemplaire filmé fut reproduit grâce à la générosité de:

University of British Columbia Library

Les images suivantes ont été reproduites avec le plus grand soin, compte tenu de la condition et de la netteté de l'exemplaire filmé, et en conformité avec les conditions du contrat de filmage.

Les exemplaires originaux dont la couverture en papier est imprimée sont filmés en commençant par le premier plat et en terminant soit par la dernière page qui comporte une empreinte d'impression ou d'illustration, soit par le second plat, selon le cas. Tous les autres exemplaires originaux sont filmés en commençant par la première page qui comporte une empreinte d'impression ou d'illustration et en terminant par la dernière page qui comporte une telle empreinte.

Un des symboles suivants apparaîtra sur la dernière image de chaque microfiche, selon le cas: le symbole \rightarrow signifie "A SUIVRE", le symbole ∇ signifie "FIN".

Les cartes, planches, tableaux, etc., peuvent être filmés à des taux de réduction différents. Lorsque le document est trop grand pour être reproduit en un seul cliché, il est filmé à partir de l'angle supérieur gauche, de gauche à droite, et de haut en bas, en prenant le nombre d'images nécessaire. Les diagrammes suivants illustrent la méthode.

ils
du
diffier
me
age

trata
o

pelure,
à

32X

Alaska Commercial Co's

STEAMSHIP LINES

—TO—

ST. MICHAEL



—AND—

YUKON

RIVER

General Offices:

310 SANSOME STREET

SAN FRANCISCO

Alaska Commercial Co.

PIONEER
TRADERS
IN ALASKA
IN
GENERAL
MERCHANDISE
AND
MINERS'
SUPPLIES

Maintain Trading Posts at all Important Points in Western and Northern Alaska and all points on the

YUKON RIVER

IN ALASKA AND NORTH WEST TY.

Particular attention has been given in selecting only the best provisions, clothing, and tools suitable for the particular needs of the Alaska miner.



General Offices:

310 SANSOME STREET
SAN FRANCISCO.

Alaska Commercial

YUKON

RIVER STEAM



The large, comfortable, rapid, stern w

ALICE,	SAR
BELLA,	SUS
MARGARET,	LOU
LEAH,	VICT
HANNAH,	YUK
W. H. SEWARD	

AND THE
STEEL PADDLE WHEELER

SAIDIE

WILL PLY
BETWEEN

St. Michael,	Forty
Tanana,	Daws
Minook,	Sixty
Fort Hamlin,	Stuart
Fort Yukon,	White
Circle City,	Pelly
and Fort Selkirk.	

Commercial Co's

YUKON

STEAMERS



portable, rapid, stern wheel steamers

SARAH,
SUSIE,
MARET, LOUISE,
VICTORIA,
SAH, YUKON,
H. SEWARD,

WHEELER

SAIDIE

Forty Mile,
Dawson,
Sixty Mile,
Stuart River,
White River,
Pelly River
and Fort Selkirk.

FROM SAN FRANCISCO

—TO—

YUKON

RIVER

DIRECT

—VIA—

ST. MICHAEL



ALASKA COMMERCIAL CO'S

OCEAN SERVICE



The fleet of this service includes the new steel Steamer "ST. PAUL," the Steamer "PORTLAND," recently rebuilt, the Steamer "BERTHA" and the Steamer "DORA."

The new Steamer St. Paul, built by the Union Iron Works at San Francisco, especially for passenger service between San Francisco and St. Michael, is 2500 tons register, 1800 horse power, with accommodations for 260 cabin passengers. No expense has been spared, and nothing has been omitted in the building of this Steamer that could promote

the comfort or safety of its passengers; such as large, comfortable, airy smoking room, and luxurious social hall on hurricane deck; bath rooms, electric lights, cold storage for fresh meats and vegetables, search lights, steam heaters etc. All berths are fore and aft.

This Company has always been known for the excellence of the fare provided; competent cooks and stewards will be on our ships as in previous years.

All our Steamers are under the command of masters and officers who have been in our employ for many years, and are thoroughly conversant with the various needs and requirements of the routes to which they are assigned.

We point with pride to the fact that during the thirty years we have navigated the waters of the Alaskan coast, we have never lost a passenger.



PASSENGER RATES

—FROM—

SAN FRANCISCO

—TO—

DAWSON

—VIA—

ST. MICHAEL



\$300.00 and upwards according to location. 150 lbs. baggage carried free; an excess of 50 lbs. allowed at 15 cts. per lb.

TO SECURE PASSAGE

A deposit of \$100.00 per berth is required. The full amount of the passage must be paid by April 15, 1898. All berths not then paid for will be otherwise disposed of and the deposit forfeited to the Alaska Commercial Company.

SAILING DATES.

Beginning about June 5th and at short intervals thereafter.

Letters of Credit.



The Alaska Commercial Co. will issue Letters of Credit at its San Francisco office, payable at St. Michael, Alaska, and Dawson, N. W. Ty., by depositing the amount of the Letter of Credit at the Company's office, 310 Sansome St. Parties wishing letters of credit on other places on the Yukon River can arrange for same at the St. Michael, Alaska, or Dawson, N. W. Ty. offices of the Company.

This Company will also issue

Certificates of Deposit



For full particulars address

Alaska Commercial Co.,

310 SANSOME ST.,

SAN FRANCISCO, CAL.

COOK'S INLET

—VIA—

Sitka-Portage

ROUTE



Should the amount of freight warrant, the Steamer "Dora" will sail from Sitka for Portage Bay on Alaska May 1st.

By this route the goods from Turnagain Arm may be received three or four weeks earlier than the Cook's Inlet Route.

Portage Bay is on the west coast of Prince William Sound. From point of landing, portage the goods, a distance of five miles, arriving at Turnagain Arm Inlet.

For further information

Alaska Commercial Co.

310 SANSOME ST.

SAN FRANCISCO, CAL.

COOK'S INLET

—VIA—

Portage Bay

ROUTE



and the amount of travel war-
Steamer "Dora" will leave
Portage Bay on April 1st and

is route the gold fields of
Arm may be reached some
four weeks earlier than via
et Route.

ge Bay is on the extreme
Prince William Sound.
nt of landing, parties cross
e, a distance of fifteen miles,
t Turnagain Arm, Cook's

urther information apply to

Commercial Co.,

10 SANSOME ST.,

SAN FRANCISCO, CAL.

SITKA=UNALASKA

MAIL ROUTE



The U. S. Mail Steamer

"DORA"

leaves Sitka on or about April 1st,
May 1st, and May 31st for *YAKUTAT,*
PRINCE WILLIAM SOUND, COOK'S INLET,
KODIAK, KARLUK, UNGA, UNALASKA and
Western way Ports.

Prompt connection is made at Sitka
with P. C. S. S. Co's. Steamer City of
Topeka.

For freight or passage apply to:

J. F. TROWBRIDGE,

Ocean Dock, Seattle

EDWARD De GROFF,

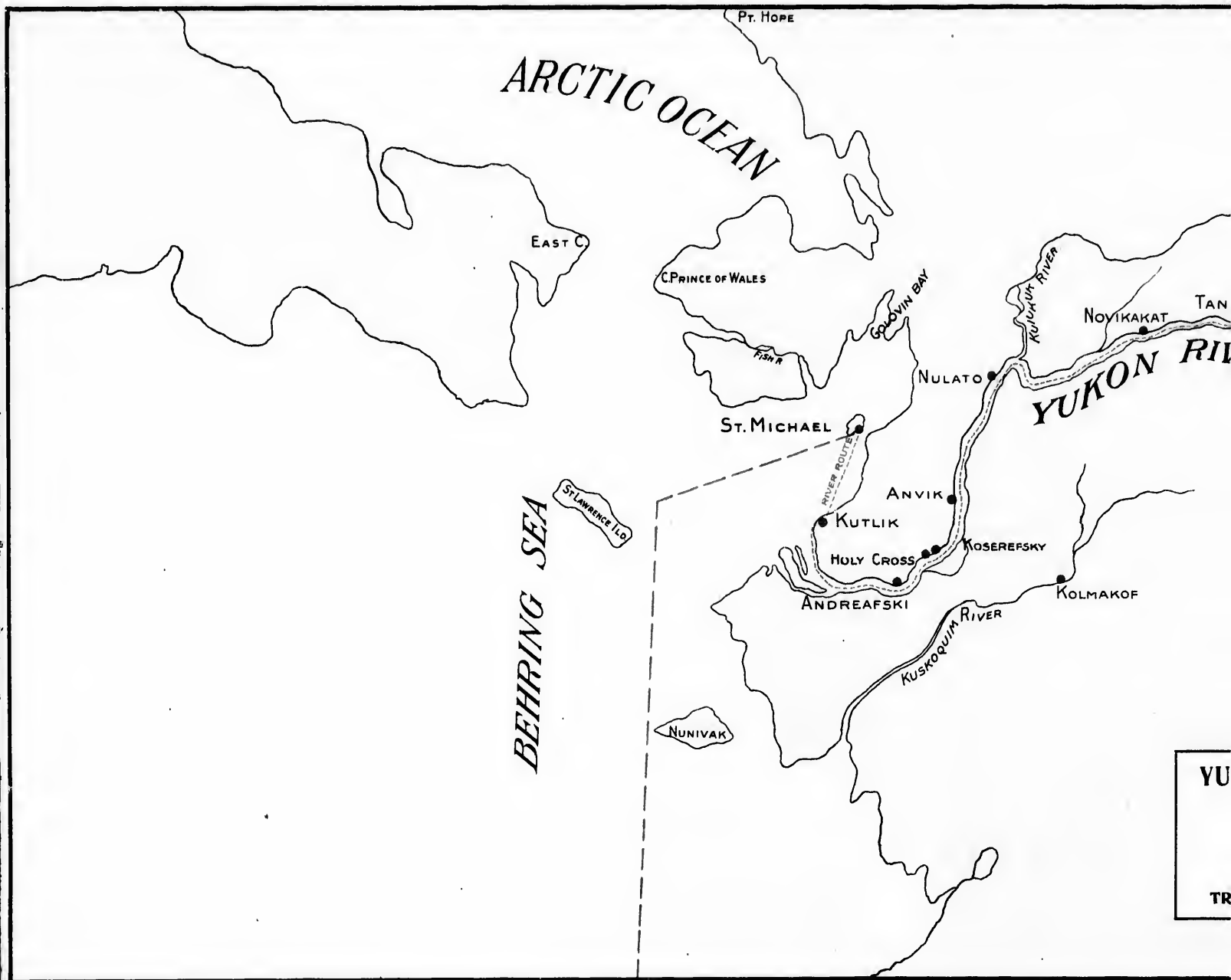
Sitka, Alaska

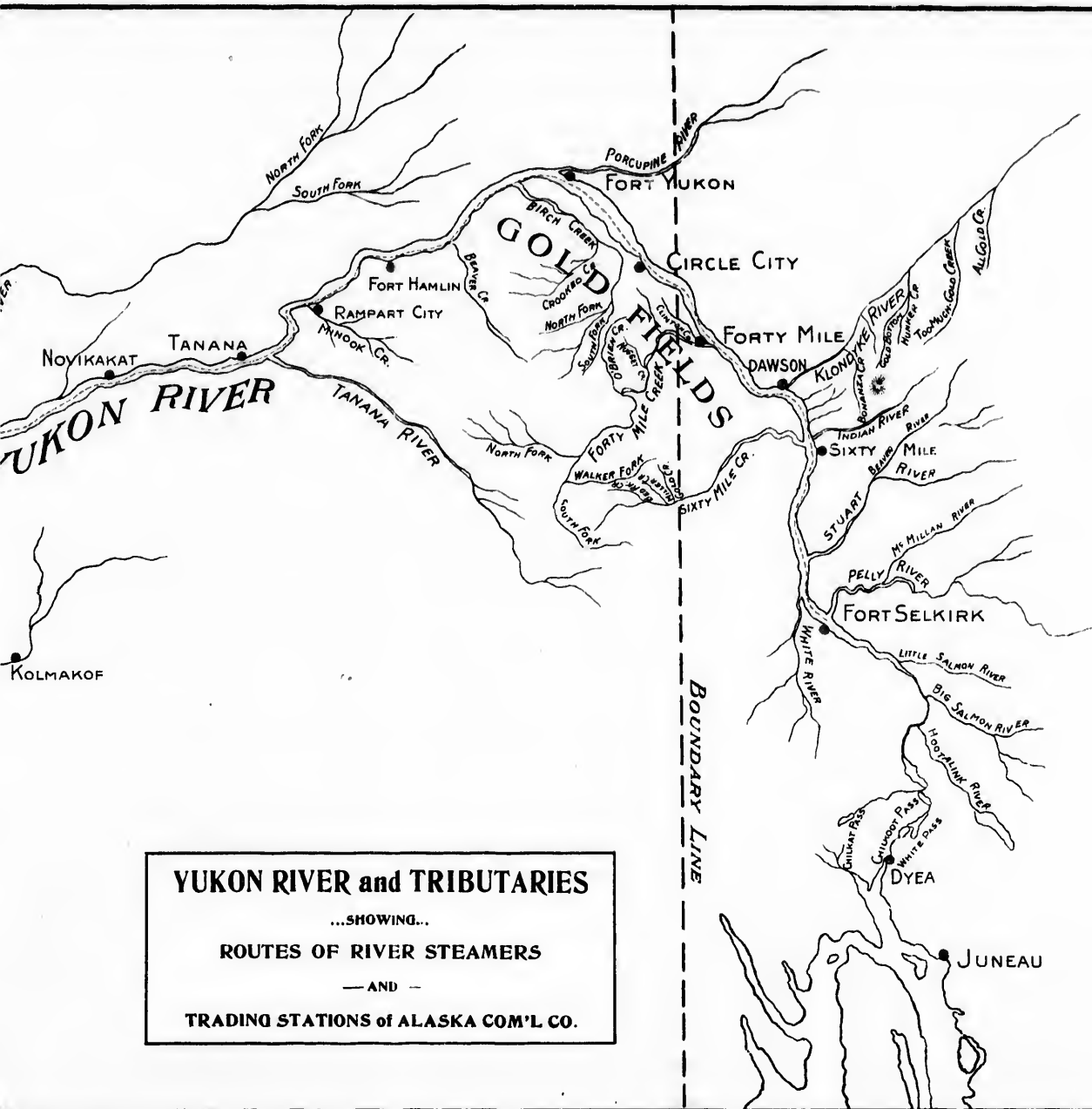


Alaska Commercial Co.

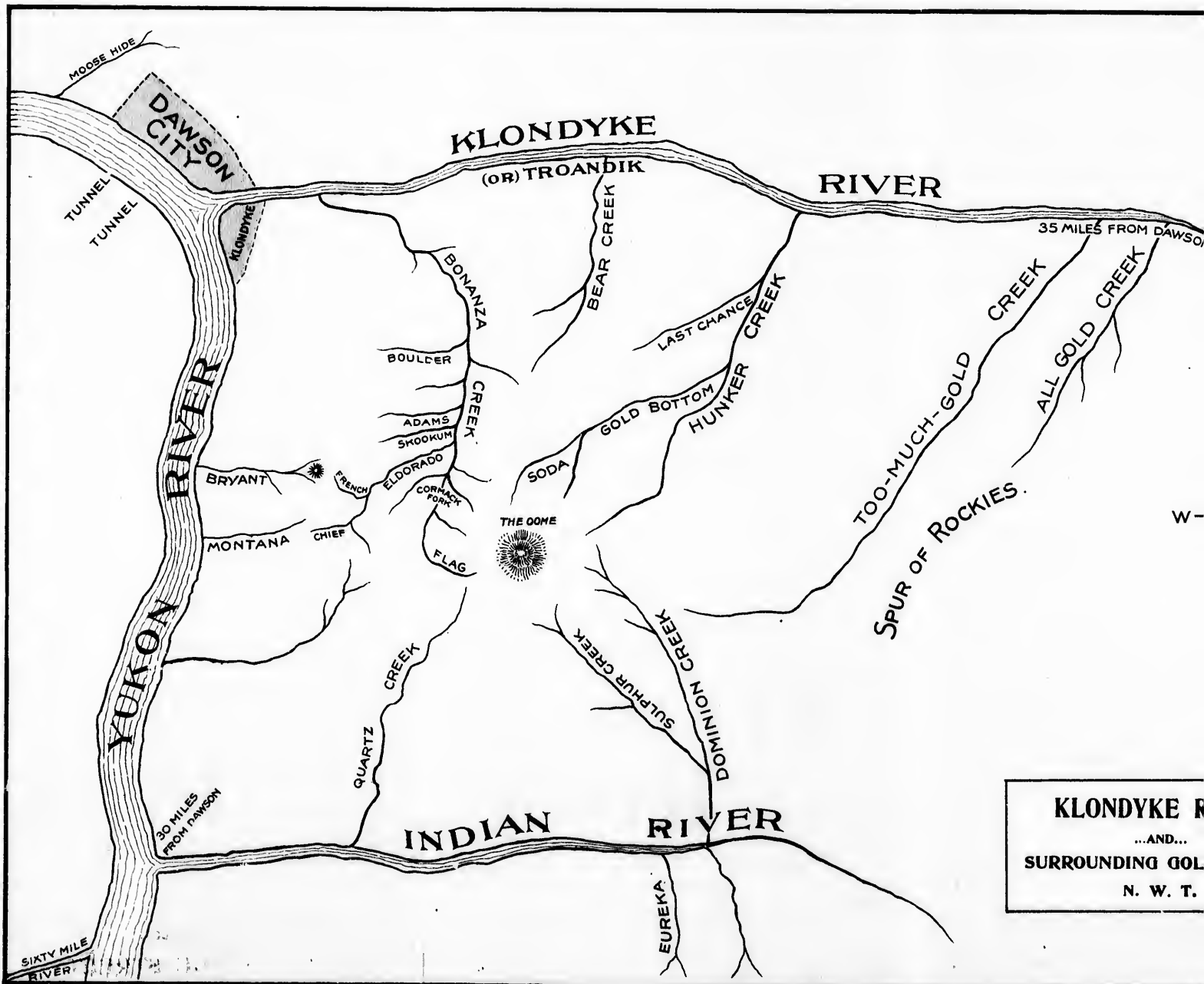
310 SANSOME STREET

SAN FRANCISCO, CAL.

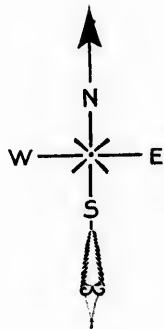
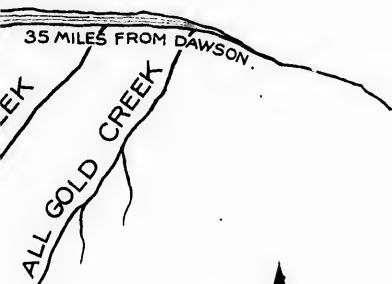




YUKON RIVER and TRIBUTARIES
 ...SHOWING...
ROUTES OF RIVER STEAMERS
 — AND —
TRADING STATIONS of ALASKA COM'L CO.



KLONDYKE R
 ...AND...
SURROUNDING GOL
 N. W. T.

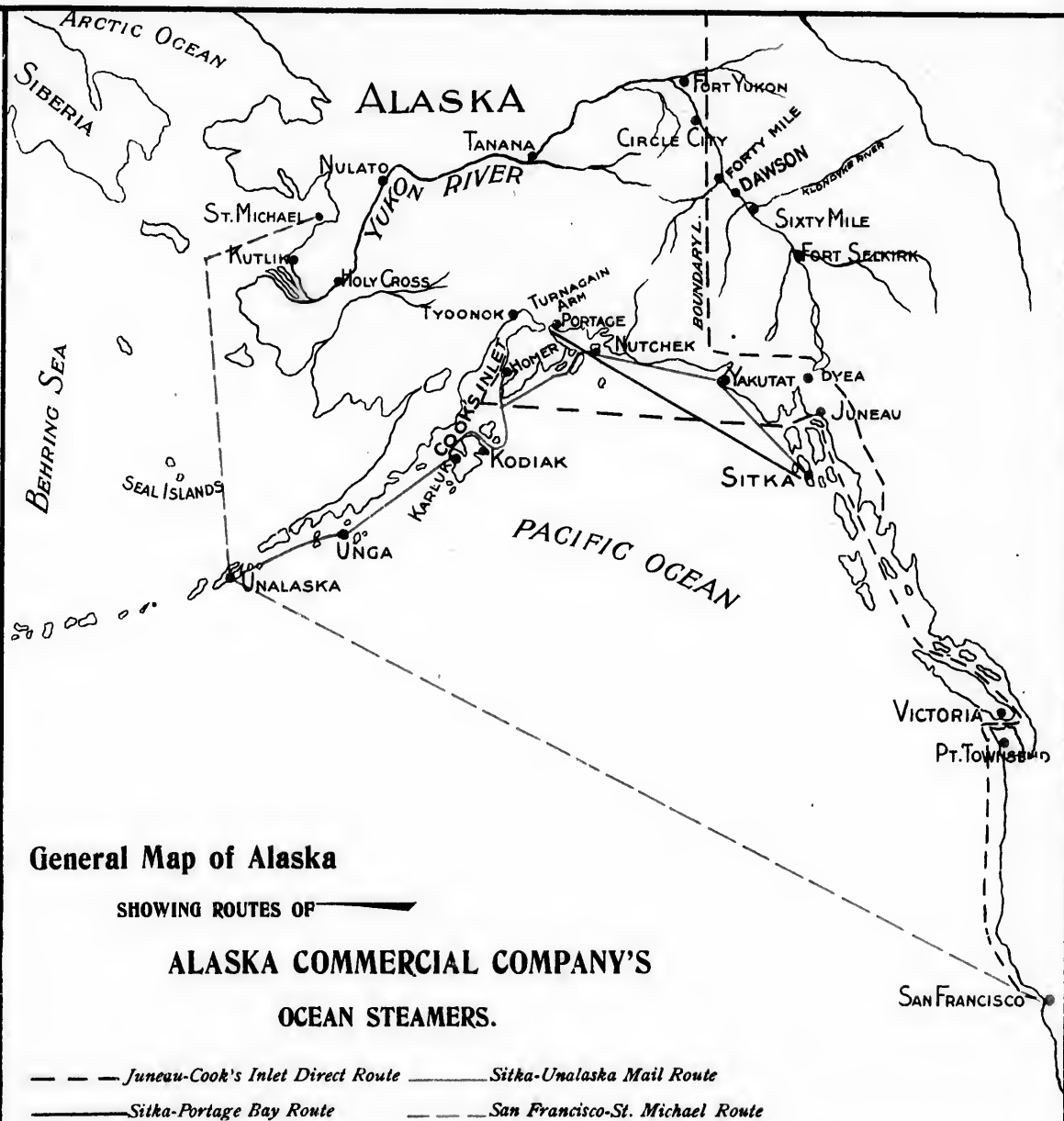


KLONDYKE RIVER

...AND...

SURROUNDING GOLD FIELDS

N. W. T.



Alaska Commercial Co's

STEAMSHIP LINES



ST. MICHAEL



YUKON RIVER

General Offices:

310 SANSOME STREET
SAN FRANCISCO

Alaska Commercial Co's

STEAMSHIP LINES



ST. MICHAEL



YUKON RIVER

General Offices:

310 SANSOME STREET
SAN FRANCISCO

