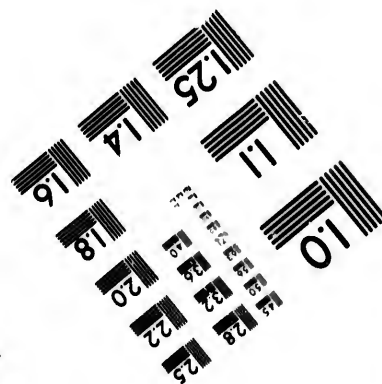
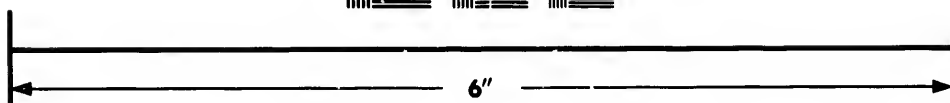
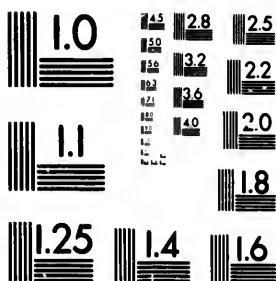
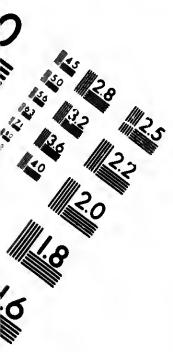


**IMAGE EVALUATION
TEST TARGET (MT-3)**



**Photographic
Sciences
Corporation**

23 WEST MAIN STREET
WEBSTER, N.Y. 14580
(716) 872-4303



**CIHM/ICMH
Microfiche
Series.**

**CIHM/ICMH
Collection de
microfiches.**



Canadian Institute for Historical Microreproductions / Institut canadien de microreproductions historiques



© 1984

Technical and Bibliographic Notes/Notes techniques et bibliographiques

The Institute has attempted to obtain the best original copy available for filming. Features of this copy which may be bibliographically unique, which may alter any of the images in the reproduction, or which may significantly change the usual method of filming, are checked below.

L'Institut a microfilmé le meilleur exemplaire qu'il lui a été possible de se procurer. Les détails de cet exemplaire qui sont peut-être uniques du point de vue bibliographique, qui peuvent modifier une image reproduite, ou qui peuvent exiger une modification dans la méthode normale de filmage sont indiqués ci-dessous.

- Coloured covers/
Couverture de couleur
- Covers damaged/
Couverture endommagée
- Covers restored and/or laminated/
Couverture restaurée et/ou pelliculée
- Cover title missing/
Le titre de couverture manque
- Coloured maps/
Cartes géographiques en couleur
- Coloured ink (i.e. other than blue or black)/
Encre de couleur (i.e. autre que bleue ou noire)
- Coloured plates and/or illustrations/
Planches et/ou illustrations en couleur
- Bound with other material/
Relié avec d'autres documents
- Tight binding may cause shadows or distortion along interior margin/
La reliure serrée peut causer de l'ombre ou de la distortion le long de la marge intérieure
- Blank leaves added during restoration may appear within the text. Whenever possible, these have been omitted from filming/
Il se peut que certaines pages blanches ajoutées lors d'une restauration apparaissent dans le texte, mais, lorsque cela était possible, ces pages n'ont pas été filmées.
- Additional comments:
Commentaires supplémentaires:

- Coloured pages/
Pages de couleur
- Pages damaged/
Pages endommagées
- Pages restored and/or laminated/
Pages restaurées et/ou pelliculées
- Pages discoloured, stained or foxed/
Pages décolorées, tachetées ou piquées
- Pages detached/
Pages détachées
- Showthrough/
Transparence
- Quality of print varies/
Qualité inégale de l'impression
- Includes supplementary material/
Comprend du matériel supplémentaire
- Only edition available/
Seule édition disponible
- Pages wholly or partially obscured by errata slips, tissues, etc., have been refilmed to ensure the best possible image/
Les pages totalement ou partiellement obscurcies par un feuillet d'errata, une pelure, etc., ont été filmées à nouveau de façon à obtenir la meilleure image possible.

MSS NOTATIONS ON VERSO ARE BLEEDING.
MAY MAKE PRINT DIFFICULT TO READ

This item is filmed at the reduction ratio checked below/
Ce document est filmé au taux de réduction indiqué ci-dessous.

10X	12X	14X	16X	18X	20X	22X	24X	26X	28X	30X	32X
											✓

The c
to the

The ir
possib
of the
filmin

Origin
begin
the la
sion,
other
first p
sion,
or illu

The la
shall
TINUI
which

Maps
differ
entire
begin
right
requir
metho

The copy filmed here has been reproduced thanks to the generosity of:

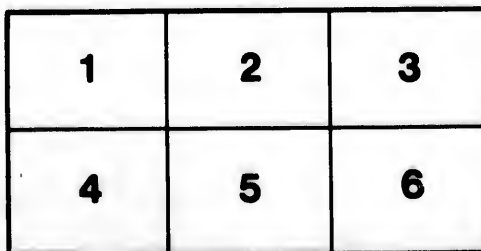
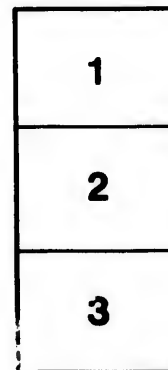
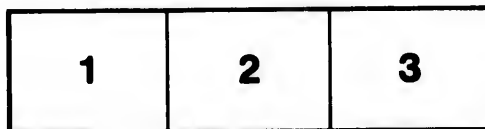
Metropolitan Toronto Library
Canadian History Department

The images appearing here are the best quality possible considering the condition and legibility of the original copy and in keeping with the filming contract specifications.

Original copies in printed paper covers are filmed beginning with the front cover and ending on the last page with a printed or illustrated impression, or the back cover when appropriate. All other original copies are filmed beginning on the first page with a printed or illustrated impression, and ending on the last page with a printed or illustrated impression.

The last recorded frame on each microfiche shall contain the symbol \rightarrow (meaning "CONTINUED"), or the symbol ∇ (meaning "END"), whichever applies.

Maps, plates, charts, etc., may be filmed at different reduction ratios. Those too large to be entirely included in one exposure are filmed beginning in the upper left hand corner, left to right and top to bottom, as many frames as required. The following diagrams illustrate the method:



L'exemplaire filmé fut reproduit grâce à la générosité de:

Metropolitan Toronto Library
Canadian History Department

Les images suivantes ont été reproduites avec le plus grand soin, compte tenu de la condition et de la netteté de l'exemplaire filmé, et en conformité avec les conditions du contrat de filmage.

Les exemplaires originaux dont la couverture en papier est imprimée sont filmés en commençant par le premier plat et en terminant soit par la dernière page qui comporte une empreinte d'impression ou d'illustration, soit par le second plat, selon le cas. Tous les autres exemplaires originaux sont filmés en commençant par la première page qui comporte une empreinte d'impression ou d'illustration et en terminant par la dernière page qui comporte une telle empreinte.

Un des symboles suivants apparaîtra sur la dernière image de chaque microfiche, selon le cas: le symbole \rightarrow signifie "A SUIVRE", le symbole ∇ signifie "FIN".

Les cartes, planches, tableaux, etc., peuvent être filmés à des taux de réduction différents. Lorsque le document est trop grand pour être reproduit en un seul cliché, il est filmé à partir de l'angle supérieur gauche, de gauche à droite, et de haut en bas, en prenant le nombre d'images nécessaire. Les diagrammes suivants illustrent la méthode.

plaire
s détails
ques du
nt modifier
xiger une
de filmage

d/
quées

caire

by errata
ned to

ment
une pelure,
façon à



DIVISION OF THE HURON DISTRICT, C. W.

STATEMENT OF FACTS,

(EXTRACTED CHIEFLY FROM A CIRCULAR PUBLISHED JANUARY, 1847.)

TABLE OF TOWNSHIPS.

NUMBER OF ACRES, POPULATION AND INCREASE, AND THE TAXES OF THE HURON DISTRICT, AS AT MARCH, 1846.

Townships, &c.	No. of Acres exclusive of Roads.	POPULATION.			TAXES.		
		Population, Dec., 1840.	Population, Mar., 1846.	Increase of Population.	£	s.	d.
WEST.							
Goderich..... } and Town..... }	54,512	1148	1789	641	185	4	9½
Collerne.....	34,399	225	553	328	38	18	8
Hullett.....	53,818	62	235	173	29	3	4½
Tuckersmith.....	41,441	342	695	353	96	7	9½
McKillop.....	52,435	143	358	215	43	0	2½
Stanley.....	45,255½	211	886	675	112	16	7
Hay.....	53,450	60	186	126	19	0	6½
Stephen.....	55,444	91	259	168	28	8	5
McClivray.....	63,690	142	516	374	80	14	1
Usborne.....	43,371	138	336	198	39	1	8
Biddulph.....	39,912	420	1209	789	140	3	1½
Ashfield.....	40,000	...	306	306	26	19	9½
Wawanosh.....	66,000	...	194	194	19	2	9
	643,727½	3681	8339	4658	940	14	0½
EAST.							
North Easthope.....	43,692	544	1350	806	173	14	1½
South Easthope.....	24,684	389	851	462	103	2	10½
Downie & G.....	49,856	394	1530	1136	183	15	0½
Ellice.....	54,987	208	739	531	82	11	7
Logan.....	54,476	9	171	162	25	6	5
Fullarton.....	41,045	46	608	562	88	19	8½
Hibbert.....	41,476	39	156	117	16	1	8
Blanshard.....	49,140	—	1239	1239	143	12	6
	359,356	1629	6644	5015	817	9	10½

Divided into two Sections, viz.:—1. WEST SECTION.—The extent of the West portion, consisting of 13 Townships, appears at a glance, from the above Table,—but it does not include in it the extensive block of land to the north, behind Ashfield, Wawanosh, Hullett, and McKillop, amounting to thousands of acres.

2. EAST SECTION.—Acre.—The extent of the East Section, which is desired to be set apart as a new District, is as follows:—

No. of Acres, as above, in eight Townships, say.....	360,000
Wellesley (behind North Easthope).....	64,000
Mornington..... } behind Ellice	54,000
Maryborough..... }	54,000
	172,000
	532,000
Besides the Block of land behind or north of Logan, say to the extent of two Townships.....	92,000
Total.....	624,000

POPULATION.—The population of the eight Townships by the above Table was at March 1846, per Assessors' Returns, 6,644, but by a Census made up by J. C. W. Daly, Esq., in the summer of 1846, is..... 7,887
Wellesley, Mornington, and Maryborough, say..... 1,700

9,587

TAXES.—The Taxes at March 1846 of the 8 Townships is £817, and they are expected to be at March 1847, £950, at March 1848 between £1100 and £1200. It will be noticed that this statement of Taxes does not include the Wild Land Tax on the Company's lands, which will amount to a considerable sum each year. This Wild Land Tax is not payable yearly; but still when it is paid, say every three years, a sum then of some hundreds of pounds will be due the Treasury. The calculation of the assessed yearly tax will be seen not to be an over-estimated one, for if the increase of Emigration continues, and settlers locate themselves as they have done lately, the yearly Taxes will be much over this calculation. And as

the Canada Company have again opened their lands for sale, by way of Lease, the extent of emigration will be much greater.

INCREASE OF POPULATION.—You will hardly fail to notice that the increase of population of the 8 East Townships, except the increase of the 13 West Townships, viz.:

Increase of West Townships	4,658
Do. of East Do.	5,015

Being an increase in about 5 years of 357 in favor of the East portion. The Town of Goderich, for instance, has increased during the period from 1840 to 1846, only 146, while the village of Stratford, not named in the population list, is in 1840 supposed to have 50 inhabitants, now by a census taken this last fall it has 23, being an increase of 373, and at present the population is supposed to be over 500. The chief increase of population, and along with it, Improvements, increase of Stock, &c. is in favour of the Eastern portion. It is estimated that the population for the last few years, has increased at a ratio of about 45 per cent. with every prospect of the increase continuing for years to come.

DISTANCES.—The distance from Stratford to Goderich, the present District town, being at the extremity of the District, is 45½ miles—from the east end of North Easthope it is about 58—from points again to the north, and to the south, it is over 60 miles—while the Township of Wellesley, in the rear of North Easthope, some parts of it will be nearer 70 miles distant from Goderich. The great majority of the inhabitants in this section, say about 6000, (and if the north townships are included, there would be 8000 people) are over forty miles from Goderich.

Now, if these 8 Townships, with the additional Townships and block included, as above stated, are formed into a new District, and Stratford as the District Town, then the Village of Stratford will be within 20 miles off the inhabitants, (excepting those in Maryborough), and within much less to the majority of the settlers.

REMARK.—It will be seen by comparing the one end of the District with the other,—13 townships with 8,—that if the population of the Townships of Stanley and the Town of Goderich, and the Tax payable by Stanley, were not included in the West section, then both sections west and east, 12 townships to 8, would be nearly balanced.

The population of the whole District was 4001 in 1838, when the Act was passed separating the County of Huron from the London District,—to be called the District of Huron. When in 1841 it went into operation 7101.—In 1842 it was by some returns 7309, and by the regular Census (if correctly published) 6815.—Then these 8 Townships have about double the population, and it may also be said taxes too, that the whole District had when the Act of Parliament was passed in 1838—and when the separation actually took place in 1841, the population and taxes of the said District were not so great as those of these 8 Townships are at this present time. The whole District went into operation with a population and tax no greater than that of the East portion has now.—When the present divisions takes place, and when the new District will go into operation, there will be a greater population, and a greater income, with far less expenditure than is now in the whole District as it stands.

The reasons which have been generally given by those in other new Districts, when they craved from the Legislature a separation from the Districts they were joined to, may be confined to four,—Extent, Distance, Population, Taxes.—When the District of Huron was separated from London, the reasons given in the Act of Parliament, are as follows; "Whereas from the great extent of the said Tract of Land, and its great distance from the District Town of the London District, it is highly expedient and necessary that the said County of Huron should be set off into a distinct and separate District."—Besides the Extent and Distance,—we also have Population and Taxes, two reasons which could not be well urged, and were not, at the time of the separation from London.

JOHN J. E. LINTON,

On behalf of himself and the other Petitioners.
MONTREAL, June, 1847.

see 1. West: C. 1. 1. 1.
(March 1838) 9.23
preamble to 7. N. 4.
C. 116. April 1838
8. West: C. 22. 9.2.

Wm. Baldwin Esq.

M. P. P.

Montreal

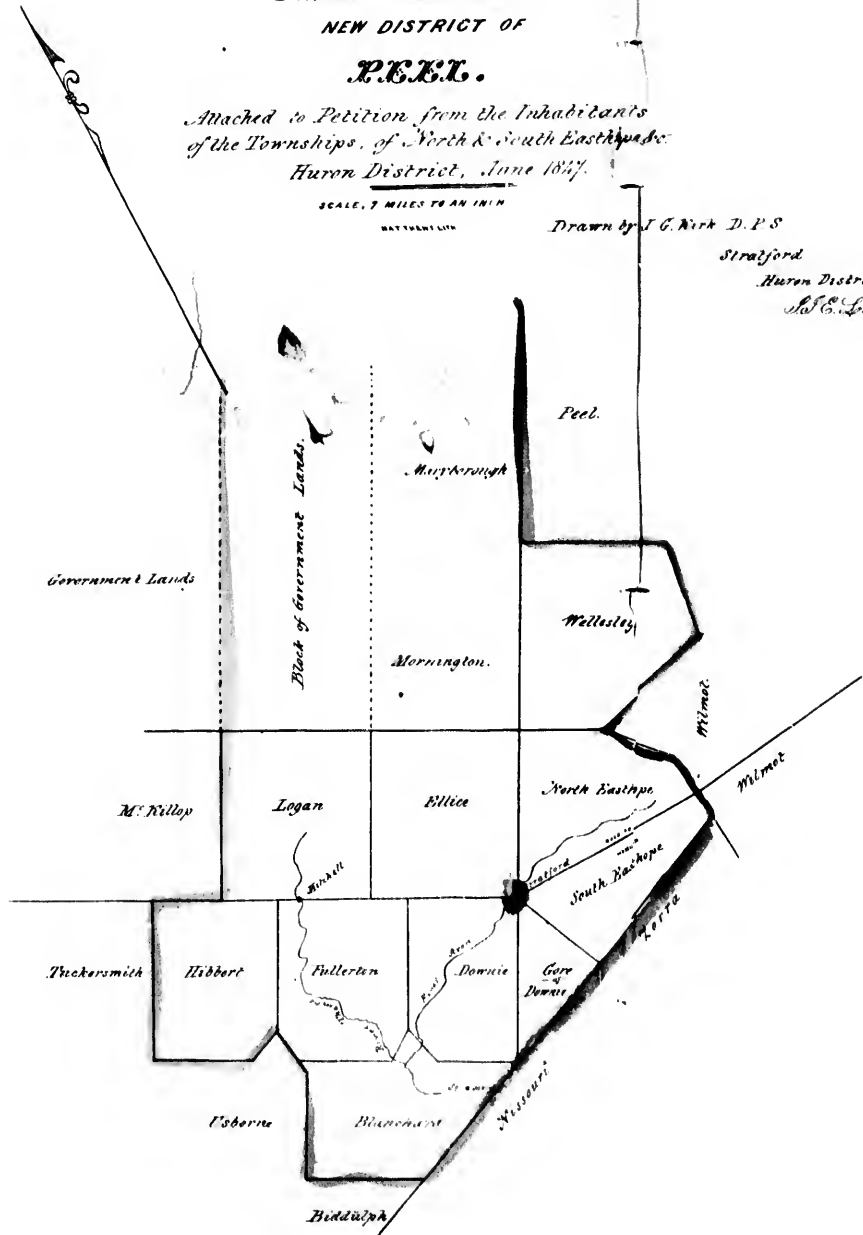
Plan
OF THE TOWNSHIPS & BLOCK OF LAND
Intended to Constitute the
NEW DISTRICT OF
P.E.E.L.

Attached to Petition from the Inhabitants
of the Townships of North & South East
Huron District, June 1847.

SCALE, 7 MILES TO AN INCH
BY THEORETICAL

Drawn by J. C. Kirk D. P. S.

Stratford
Huron District
J. C. Kirk



(Turn Over)

