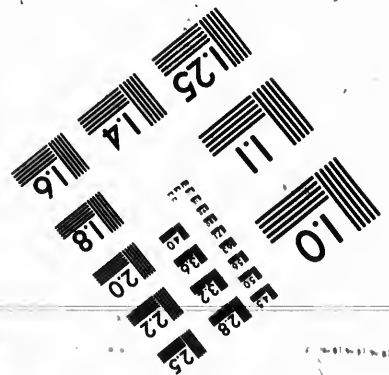
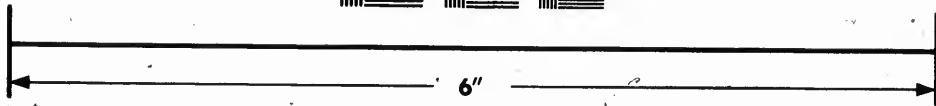
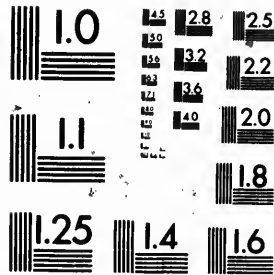


**IMAGE EVALUATION
TEST TARGET (MT-3)**



**Photographic
Sciences
Corporation**

23 WEST MAIN STREET
WEBSTER, N.Y. 14580
(716) 872-4503

125
22

**CIHM
Microfiche
Series
(Monographs)**

**ICMH
Collection de
microfiches
(monographies)**



Canadian Institute for Historical Microreproductions / Institut canadien de microreproductions historiques

© 1992

Technical and Bibliographic Notes / Notes techniques et bibliographiques

The Institute has attempted to obtain the best original copy available for filming. Features of this copy which may be bibliographically unique, which may alter any of the images in the reproduction, or which may significantly change the usual method of filming, are checked below.

L'Institut a microfilmé le meilleur exemplaire qu'il lui a été possible de se procurer. Les détails de cet exemplaire qui sont peut-être uniques du point de vue bibliographique, qui peuvent modifier une image reproduite, ou qui peuvent exiger une modification dans la méthode normale de filmage sont indiqués ci-dessous.

- Coloured covers/
Couverture de couleur
- Covers damaged/
Couverture endommagée
- Covers restored and/or laminated/
Couverture restaurée et/ou pelliculée
- Cover title missing/
Le titre de couverture manque
- Coloured maps/
Cartes géographiques en couleur
- Coloured ink (i.e. other than blue or black)/
Encre de couleur (i.e. autre que bleue ou noire)
- Coloured plates and/or illustrations/
Planches et/ou illustrations en couleur
- Bound with other material/
Relié avec d'autres documents
- Tight binding may cause shadows or distortion along interior margin/
La reliure serrée peut causer de l'ombre ou de la distorsion le long de la marge intérieure
- Blank leaves added during restoration may appear within the text. Whenever possible, these have been omitted from filming/
Il se peut que certaines pages blanches ajoutées lors d'une restauration apparaissent dans le texte, mais, lorsque cela était possible, ces pages n'ont pas été filmées.

- Coloured pages/
Pages de couleur
- Pages damaged/
Pages endommagées
- Pages restored and/or laminated/
Pages restaurées et/ou pelliculées
- Pages discoloured, stained or foxed/
Pages décolorées, tachetées ou piquées
- Pages detached/
Pages détachées
- Showthrough/
Transparence
- Quality of print varies/
Qualité inégale de l'impression
- Continuous pagination/
Pagination continue
- Includes index(es)/
Comprend un (des) index

Title on header taken from: /
Le titre de l'en-tête provient:

- Title page of issue/
Page de titre de la livraison
- Caption of issue/
Titre de départ de la livraison
- Masthead/
Générique (périodiques) de la livraison

- Additional comments: /
Commentaires supplémentaires:

This item is filmed at the reduction ratio checked below/
Ce document est filmé au taux de réduction indiqué ci-dessous.

10X	12X	14X	16X	18X	20X	22X	24X	26X	28X	30X	32X
<input type="checkbox"/>	<input type="checkbox"/>	<input type="checkbox"/>	<input type="checkbox"/>	<input type="checkbox"/>	<input type="checkbox"/>	<input checked="" type="checkbox"/>	<input type="checkbox"/>	<input type="checkbox"/>	<input type="checkbox"/>	<input type="checkbox"/>	<input type="checkbox"/>

The copy filmed here has been reproduced thanks to the generosity of:

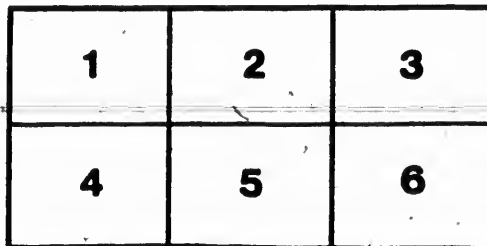
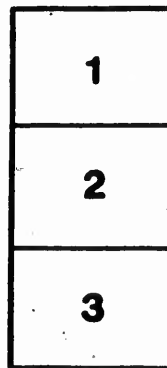
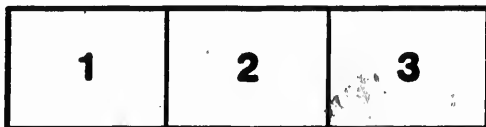
Manuscript Division,
National Archives of Canada

The images appearing here are the best quality possible considering the condition and legibility of the original copy and in keeping with the filming contract specifications.

Original copies in printed paper covers are filmed beginning with the front cover and ending on the last page with a printed or illustrated impression, or the back cover when appropriate. All other original copies are filmed beginning on the first page with a printed or illustrated impression, and ending on the last page with a printed or illustrated impression.

The last recorded frame on each microfiche shall contain the symbol \rightarrow (meaning "CONTINUED"), or the symbol ∇ (meaning "END"), whichever applies.

Maps, plates, charts, etc., may be filmed at different reduction ratios. Those too large to be entirely included in one exposure are filmed beginning in the upper left hand corner, left to right and top to bottom, as many frames as required. The following diagrams illustrate the method:



L'exemplaire filmé fut reproduit grâce à la générosité de:

Division des manuscrits,
Archives nationales du Canada

Les images suivantes ont été reproduites avec le plus grand soin, compte tenu de la condition et de la netteté de l'exemplaire filmé, et en conformité avec les conditions du contrat de filmage.

Les exemplaires originaux dont la couverture en papier est imprimée sont filmés en commençant par le premier plat et en terminant soit par la dernière page qui comporte une empreinte d'impression ou d'illustration, soit par le second plat, selon le cas. Tous les autres exemplaires originaux sont filmés en commençant par la première page qui comporte une empreinte d'impression ou d'illustration et en terminant par la dernière page qui comporte une telle empreinte.

Un des symboles suivants apparaîtra sur la dernière image de chaque microfiche, selon le cas: le symbole \rightarrow signifie "A SUIVRE", le symbole ∇ signifie "FIN".

Les cartes, planches, tableaux, etc., peuvent être filmés à des taux de réduction différents. Lorsque le document est trop grand pour être reproduit en un seul cliché, il est filmé à partir de l'angle supérieur gauche, de gauche à droite, et de haut en bas, en prenant le nombre d'images nécessaire. Les diagrammes suivants illustrent la méthode.

MONTREAL DISTRICT AGRICULTURAL SOCIETY.

Mr. Henry Headley, Mr. Peter Grant and Mr. Nicholas Le Faivre, accepted the appointment of inspectors of Crops, &c. &c., in the County of Montreal, and being duly sworn, proceeded to the Farms of the several competitors; and awarded the premiums as follows, viz:—

- CLASS
 27—Alexander Mills, Cote St. Pierre, for the best field of Wheat.
 C. O. Ermatinger, Longue Point, for the next best.
 28—Hugh Brodie, Cote St. Pierre, for the best field of Barley.
 James Knox, Cote St. Paul, for the next best.
 29—James Somerville, La Chine, for the best field of Oats.
 John Cross, River St. Pierre, for the next best.
 30—James Fisher, Longue Pointe, for the best field of Pease.
 James Somerville, La Chine, for the next best.
 31—Joseph Perrault, St. Catharine, for the best field of Indian Corn.
 Charles Penner, La Chine, for the next best.
 32—William Evans, Cote St. Paul, for the best field of Potatoes.
 Joseph Perrault, St. Catherine, for the next best.
 33—C. O. Ermatinger, Longue Pointe, for the best Mangle Wurtzel.
 No competitor for the 2d prize.
 34—No competitor for Turnips.

Premiums awarded to Canadian Practical Farmers only.

- 35—Captain Andre Legault, Pointe Claire, for the best field of Wheat.
 Charles Valois, La Chine, for the next best.
 36—Pierre Valiquette, River St. Pierre, for the best field of Barley.
 Charles Groux, Cote de Liesse, St. Laurent, for the next best.
 37—Captain Andre Legault, Pointe Claire, for the best field of Oats.
 Hyacinte Viault, St. Laurent, for the next best.
 38—Joseph Allard, Junr., La Chine, for the best field of Pease.
 John Et. Miloché, La Chine, for the next best.
 39—Maurice Gougon, Cote St. Pierre, for the best field of Indian Corn.
 Antoine Gougon, do. for the next best.
 40—Maurice Gougon, do. for the best field of Potatoes.
 François Belanger, do. for the next best.
 41—Flax, no competitors.
 42—Maurice Gougon, Cote St. Pierre, for the best managed Farm & Stock.
 Nicholas Le Faivre, senr. (Liesse) La Chine, for the next best.
 Gilbert Ledue, Cote St. Pierre, recommended for a 3d premium.
 43—Antoine Cacire, Lachine, best prepared summer Fallow.
 Jean Et. Quessel, do. for the next best.
 Captain Roy, St. Laurent, recommended a prize for Fall Wheat.

The premiums above awarded shall be paid on application to the Secretary, at the Society's Committee Room, at the house of Mr. A. Joynt, St. Gabriel Street, on Tuesday next the 28th instant, from nine to twelve o'clock; and if not applied for that day, the Secretary will pay at his own house, Cote St. Paul, when called upon.

By order,

WM. EVANS, SECRETARY.

REPORT OF THE INSPECTORS OF CROPS, &c.

The inspection of crops of persons who were competitors for premiums offered by the Society for 1837, leading us through a large portion of the County of Montreal, has induced us to make a report of the state of the crops generally which have come under our observations, and to bestow commendation on some individuals whom we consider particularly merited it, by their good farming and management generally.

STATE OF THE CROPS.

Wheat is in general a fair crop.

Barley a good crop.

Oats promise to be abundant, and is sowed to a great extent.

Pease are a heavy crop on dry land, but have suffered on low wet soils.

Indian Corn planted to a greater extent than for many years past, and looks well.

Potatoes look well on high dry lands, but have suffered very much on flat lands from the heavy rains in the latter part of June.

Hay most abundant, and is likely to be as low in price as for years past.

STATE OF SOME FARMS, &c.

Mr. Perrault, of St. Catherines, President of the Society, has his extensive farm in the highest state of improvement. We admired particularly a fine road through the centre, and the farm judiciously subdivided by good fences of wood and stone, with well made pointed gates opening into each enclosure. A part that had been a bare quarry had stone to the depth of two or three feet taken off, and is now growing a heavy crop of barley. His cows, thirty-six in number, are very fine.

Mr. Ermatinger, of Longue Pointe, deserves the greatest praise for the high state of cultivation of his extensive property. His buildings, fences and stock of cattle are most excellent.

Major Gregory's farm at Woodlands has been greatly improved the last four years. His stock of cattle (bred by himself) are superior to most in the county.

Mr. Fenner of Lachine, vice president of the society, has his farm in the best condition. The regular and neat manner in which his hops are planted and dressed particularly arrested our attention. His farm is conveniently sub-divided—we remarked 30 acres of summer fallow on a property purchased by him last year. His sheep, (some imported by himself,) are superior to any on the island.

The farm of Mr. Somerville, of Lachine, is in excellent order—and well managed.

Mr. Evans of Cote St. Paul, Secretary to the Society, has made great improvement in his farm, (where improvement was practicable): we cannot omit mentioning his crop of potatoes—of which he has near thirty acres planted on high land—as the cleanest and most forward we have seen.

Mr. Brodie of Cote St. Pierre, has his farm in good order, with good fences and buildings.

Mr. Ogilvie, Rivièrs St. Pierre, though an unsuccessful competitor, his crops having suffered from the heavy rains in June, has his farm in excellent order, and well managed.

The farm, stock and crops of Mr. Fisher of Longue Pointe, do him great credit.

We take particular pleasure in mentioning the high state of cultivation of several farms owned by Canadians. The first, Mr. Maurice Gougon, Cote St. Pierre, deserves the greatest praise for good crops, good management, and his farm being highly manured with dung taken from town—quite in the style of an old country farmer. His brother Antoine, and brother-in-law François Belanger, who occupy the adjoining farms, are also deserving the highest commendation for good crops, well manured from town.

Mr. Gilbert Ledue's Cote St. Pierre, Farm and Buildings do him great credit; his land is clear and in good order, with a most extensive orchard.

Mr. Nicholas Le Faivre, senior, (Liesse) Lachine, has his farm in good order, with good stock.

Capt. Roy of St. Laurent, had about three acres of excellent fall wheat; his buildings are superior; and we observed an extensive young orchard planted.

The number of English and Canadian competitors were equal—18 of each. The President and Secretary accompanied us the first day—and at our particular request the Secretary continued with us during our inspection—all which is respectfully submitted to the managing Committee—

HENRY HEADLEY.
 PETER GRANT.
 NICHOLAS LAFAIVRE.

July 21, 1837.

58

