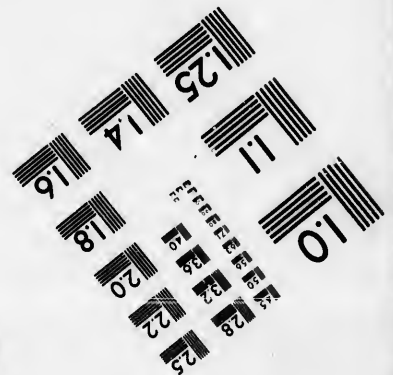
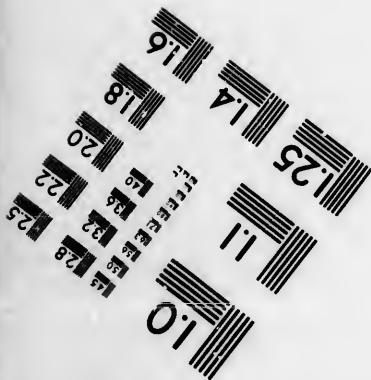
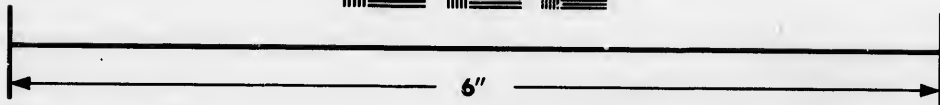
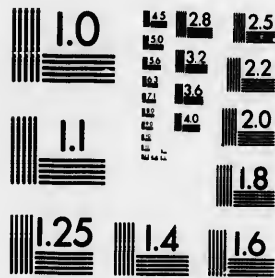


**IMAGE EVALUATION
TEST TARGET (MT-3)**



**Photographic
Sciences
Corporation**

23 WEST MAIN STREET
WEBSTER, N.Y. 14580
(716) 872-4503



**CIHM/ICMH
Microfiche
Series.**

**CIHM/ICMH
Collection de
microfiches.**



Canadian Institute for Historical Microreproductions / Institut canadien de microreproductions historiques



© 1985

The copy filmed here has been reproduced thanks to the generosity of:

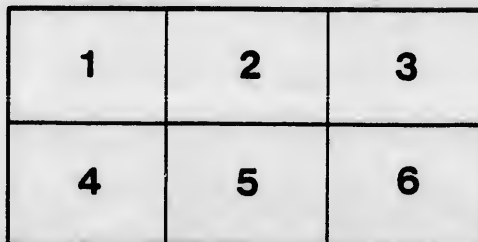
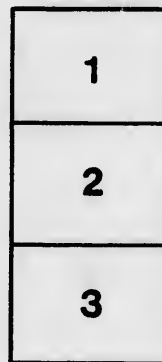
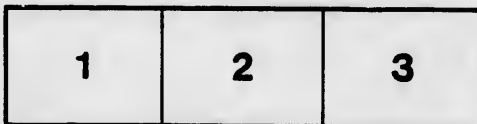
D. B. Weldon Library
University of Western Ontario
(Regional History Room)

The images appearing here are the best quality possible considering the condition and legibility of the original copy and in keeping with the filming contract specifications.

Original copies in printed paper covers are filmed beginning with the front cover and ending on the last page with a printed or illustrated impression, or the back cover when appropriate. All other original copies are filmed beginning on the first page with a printed or illustrated impression, and ending on the last page with a printed or illustrated impression.

The last recorded frame on each microfiche shall contain the symbol \rightarrow (meaning "CONTINUED"), or the symbol ∇ (meaning "END"), whichever applies.

Maps, plates, charts, etc., may be filmed at different reduction ratios. Those too large to be entirely included in one exposure are filmed beginning in the upper left hand corner, left to right and top to bottom, as many frames as required. The following diagrams illustrate the method:



L'exemplaire filmé fut reproduit grâce à la générosité de:

D. B. Weldon Library
University of Western Ontario
(Regional History Room)

Les images suivantes ont été reproduites avec le plus grand soin, compte tenu de la condition et de la netteté de l'exemplaire filmé, et en conformité avec les conditions du contrat de filmage.

Les exemplaires originaux dont la couverture en papier est imprimée sont filmés en commençant par le premier plat et en terminent soit par la dernière page qui comporte une empreinte d'impression ou d'illustration, soit par le second plat, selon le cas. Tous les autres exemplaires originaux sont filmés en commençant par la première page qui comporte une empreinte d'impression ou d'illustration et en terminant par la dernière page qui comporte une telle empreinte.

Un des symboles suivants apparaîtra sur la dernière image de chaque microfiche, selon le cas: le symbole \rightarrow signifie "A SUIVRE", le symbole ∇ signifie "FIN".

Les cartes, planches, tableaux, etc., pouvant être filmés à des taux de réduction différents. Lorsque le document est trop grand pour être reproduit en un seul cliché, il est filmé à partir de l'angle supérieur gauche, de gauche à droite, et de haut en bas, en prenant le nombre d'images nécessaire. Les diagrammes suivants illustrent la méthode.

errata
to

pelure,
n à



32X

pu

Price 25 cts each. 5 Copies for \$1, or \$2 per Doz.

DOYLE'S
POCKET
READY RECKONER,
FOR
TIMBER, PLANK, BOARDS, SAW-LOGS,
WAGES, BOARD,
AND 6 AND 7 PER CENT.
INTEREST TABLES.

BY EDWARD DOYLE.

REVISED AND IMPROVED EDITION.

TORONTO:
THOMAS MACLEAR.
1853.

"The most correct Ready Reckoner now before the public."—NEW YORK SIGNAL,

Entered according to Act of Congress, in the year 1851, by
GEO. H. DERBY AND CO.
In the Clerk's Office of the District Court for the Northern
District of New York.

Stereotyped by
BEADLE & BROTHER,
BUFFALO.

T318

PUBLISHERS' NOTICE.

IN these days when the *saving of time* enters into every man's calculations concerning his business, it is evident that every method of obtaining so desirable an object, should be studied and adopted. The following Tables will be found eminently calculated to answer this great purpose, in all the ordinary transactions which require correct and accurate results in relation to WOOD, LUMBER, WEIGHTS, COINS, INTEREST, &c., &c. And when it is considered that in addition to the *saving of time and labor*, perfect *certainty* as to the results is obtained by any person even moderately versed in arithmetic, it seems clear enough that such a work must not only be useful but command a continuance of public favor. And as more than fifteen thousand of this work in its old form have been already sold, it is confidently believed that there will be a still greater demand for this new and much improved edition.

BUFFALO, Sept., 1851.

RECOMMENDATIONS.

THE following extract from a letter received from Jonathan Child, Esq., late Mayor of the city of Rochester, has induced me to offer to the public a Second Edition of my Pocket Reckoner.

"For the last three years I have been extensively engaged in the Saw-mill business, requiring the use of a log book ; not being able to find any of yours in the bookstores, I purchased one published by Mr. Scribner of this city ; I soon found it varied from yours, and on a thorough comparison I found it to contain many errors. As the edition you published is entirely out of the market I have borrowed one for a short time, and the booksellers inform me it is very much inquired after, and that if you would get up a new edition, a large number of them could be sold here.

"JONATHAN CHILD."

"The statement of Mr. Child can be relied upon, and from my own knowledge of Mr. Doyle's qualifications as an accountant I concur in his recommendation.

WM. C. BOUCK."

The accuracy of the calculations can be relied on, as they have been tested in an extensive business for several years, and will be found very convenient to persons dealing in any of those articles, or hiring men for any purpose, as they will at all times afford a correctness not readily acquired by hasty calculation.

THE AUTHOR.

ed from
city of
public a

nsively
ng the
any of
blished
it va-
rison I
dition
I have
sellers
ad that
umber

L.D."

upon,
qual-
recom-
DK."

ed on,
siness
venient
hiring
afford
lecula-
OR.

TIMBER MEASURE.

THE following Table gives the number of feet, inches and parts, contained in a stick of Timber of any dimension, from 18 to 36 feet long, and from 9 to 24 inches square.

The column on the left, from 18 to 36, is intended for the length of a piece of Timber, and the caption for the breadth and depth. Example — A stick of Timber 23 feet long, 15 inches broad, and 14 inches thick: to find its contents, refer to the column on the left for the length 23 feet; then on a line immediately under its dimension 14 by 15, you find the contents to be 33 feet, 6 inches, and 6 parts. Where the contents of a larger stick is required, than given in the Table; for instance, 45 feet, take the amount of 23 and 22 feet of the dimension required, add them together, and you have the contents of a stick 45 feet long. If the breadth or depth is not on the Table, where the length is given; for

instance, 10 by 8, take the amount of 10 by 16 of the same length; as 10 by 16 is twice 10 by 8, you have only to divide 10 by 16 by 2, and you have the quantity contained in a stick of 10 by 8. Where neither the breadth nor depth is in the Table; for instance, 7 by 8, find out the quantity in a stick of the same length, 14 by 16, divide them by 4, and you have the contents required.

The contents of a stick of round Timber, when squared, can be ascertained, with a small variation, by the same Table. Where the stick is of equal diameter, gird it in the middle with a small cord, and take 1-5 of the girt for the square of the side; where it is tapering, gird it in two or more places, and divide the sum of the girt for the mean girt, which when found, 1-5 will be the side of the square, the contents of which will be nearly the same as a stick of square Timber of the same dimensions.

TIMBER.

Square of the Side in Inches.

Length in Feet.

	9 by 9			9 by 10			9 by 11			9 by 12		
	Feet.	Inches.	Parts.	Feet.	Inches.	Parts.	Feet.	Inches.	Parts.	Feet.	Inches.	Parts.
18	10	1	6	11	3	0	12	4	6	13	6	0
19	10	8	3	11	10	6	13	0	9	14	3	0
20	11	3	0	12	6	0	13	9	0	15	0	0
21	11	9	9	13	1	6	14	5	3	15	9	0
22	12	4	6	13	9	0	15	1	6	16	6	0
23	12	11	3	14	4	6	15	9	9	17	3	0
24	13	6	0	15	0	0	16	6	0	18	0	0
25	14	0	9	15	7	6	17	2	3	18	9	0
26	14	7	6	16	3	0	17	10	6	19	6	0
27	15	2	3	16	10	6	18	6	9	20	3	0
28	15	9	0	17	6	0	19	3	0	21	0	0
29	16	3	9	18	1	6	19	11	3	21	9	0
30	16	10	6	18	9	0	20	7	6	22	6	0
31	17	5	3	19	4	6	21	3	9	23	3	0
32	18	0	0	20	0	0	22	0	0	24	0	0
33	18	6	9	20	7	6	22	8	3	24	9	0
34	19	1	6	21	3	0	23	4	6	25	6	0
35	19	8	3	21	10	6	24	0	9	26	3	0
36	20	3	0	22	6	0	24	9	0	27	0	0

TIMBER.

Square of the Side in Inches.

Length in Feet.	9 by 13				9 by 14				9 by 15				9 by 16			
	Feet.		Inches.		Feet.		Inches.		Feet.		Inches.		Feet.		Inches.	
	Feet.	Inches.	Parts.		Feet.	Inches.	Parts.		Feet.	Inches.	Parts.		Feet.	Inches.	Parts.	
18	14	7	6	15	9	0		16	10	6		18	0	0		
19	15	5	3	16	7	6		17	9	9		19	0	0		
20	16	3	0	17	6	0		18	9	0		20	0	0		
21	17	0	9	18	4	6		19	8	3		21	0	0		
22	17	10	6	19	3	0		20	7	6		22	0	0		
23	18	8	3	20	1	6		21	6	9		23	0	0		
24	19	6	0	21	0	0		22	6	0		24	0	0		
25	20	3	9	21	10	6		23	5	3		25	0	0		
26	21	1	6	22	9	0		24	4	6		26	0	0		
27	21	11	3	23	7	6		25	3	9		27	0	0		
28	22	9	0	24	6	0		26	3	0		28	0	0		
29	23	6	9	25	4	6		27	2	3		29	0	0		
30	24	4	6	26	3	0		28	1	6		30	0	0		
31	25	2	3	27	1	6		29	0	9		31	0	0		
32	26	0	0	28	0	0		30	0	0		32	0	0		
33	26	9	9	28	10	6		30	11	3		33	0	0		
34	27	7	6	29	9	0		31	10	6		34	0	0		
35	28	5	3	30	7	6		32	9	9		35	0	0		
36	29	3	0	31	6	0		33	9	0		36	0	0		

TIMBER.

Square of the Side in Inches.

Length in Feet.

9 by 17 | 9 by 18 | 9 by 19 | 9 by 20

Feet.	Inches.	Parts.	Feet.	Inches.	Parts.	Feet.	Inches.	Parts.	Feet.	Inches.	Parts.
-------	---------	--------	-------	---------	--------	-------	---------	--------	-------	---------	--------

18	19	1	6	20	3	0	21	4	6	22	6	0
19	20	2	3	21	4	6	22	6	9	23	9	0
20	21	3	0	22	6	0	23	9	0	25	0	0
21	22	3	9	23	7	6	24	11	3	26	3	0
22	23	4	6	24	9	0	26	1	6	27	6	0
23	24	5	3	25	10	6	27	3	9	28	9	0
24	25	6	0	27	0	0	28	6	0	30	0	0
25	26	6	9	28	1	6	29	8	3	31	3	0
26	27	7	6	29	3	0	30	10	6	32	6	0
27	28	8	3	30	4	6	32	0	9	33	9	0
28	29	9	0	31	6	0	33	3	0	35	0	0
29	30	9	9	32	7	6	34	5	3	36	3	0
30	31	10	6	33	9	0	35	7	6	37	6	0
31	32	11	3	34	10	6	36	9	9	38	9	0
32	34	0	0	36	0	0	38	0	0	40	0	0
33	35	0	9	37	1	6	39	2	3	41	3	0
34	36	1	6	38	3	0	40	4	6	42	6	0
35	37	2	3	39	4	6	41	6	9	43	9	0
36	38	3	0	40	6	0	42	9	0	45	0	0

TIMBER.

Length in Feet.

Square of the Side in Inches.

	9 by 21			10 by 10			10 by 11			10 by 12		
	Feet.	Inches.	Parts.	Feet.	Inches.	Parts.	Feet.	Inches.	Parts.	Feet.	Inches.	Parts.
18	23	7	6	12	6	0	13	9	0	15	0	0
19	24	11	3	13	2	4	14	6	2	15	10	0
20	26	3	0	13	10	8	15	3	4	16	8	0
21	27	6	9	14	7	0	16	0	6	17	6	0
22	28	10	6	15	3	4	16	9	8	18	4	0
23	30	2	3	15	11	8	17	6	10	19	2	0
24	31	6	0	16	8	0	18	4	0	20	0	0
25	32	9	9	17	4	4	19	1	2	20	10	0
26	34	1	6	18	0	8	19	10	4	21	8	0
27	35	5	3	18	9	0	20	7	6	22	6	0
28	36	9	0	19	5	4	21	4	8	23	4	0
29	38	0	9	20	1	8	22	1	10	24	2	0
30	39	4	6	20	10	0	22	11	0	25	0	0
31	40	8	3	21	6	4	23	8	2	25	10	0
32	42	0	0	22	2	8	24	5	4	26	8	0
33	43	3	9	22	11	0	25	2	6	27	6	0
34	44	7	6	23	7	4	25	11	8	28	4	0
35	45	11	3	24	3	8	26	8	10	29	2	0
36	47	3	0	25	0	0	27	6	0	30	0	0

TIMBER.

Square of the Side in Inches.

Length in Feet.

10 by 13 | 10 by 14 | 10 by 15 | 10 by 16

Length in Feet.	10 by 13			10 by 14			10 by 15			10 by 16		
	Feet.	Inches.	Parts.	Feet.	Inches.	Parts.	Feet.	Inches.	Parts.	Feet.	Inches.	Parts.
18	16	3	0	17	6	0	18	9	0	20	0	0
19	17	1	10	18	5	8	19	9	6	21	1	4
20	18	0	8	19	5	4	20	10	0	22	2	8
21	18	11	6	20	5	0	21	10	6	23	4	0
22	19	10	4	21	4	8	22	11	0	24	5	4
23	20	9	2	22	4	4	23	11	6	25	6	8
24	21	8	0	23	4	0	25	0	0	26	8	0
25	22	6	10	24	3	8	26	0	6	27	9	4
26	23	5	8	25	3	4	27	1	0	28	10	8
27	24	4	6	26	3	0	28	1	6	30	0	0
28	25	3	4	27	2	8	29	2	0	31	1	4
29	26	2	2	28	2	4	30	2	6	32	2	8
30	27	1	0	29	2	0	31	3	0	33	4	0
31	27	11	10	30	1	8	32	3	6	34	5	4
32	28	10	8	31	1	4	33	4	0	35	6	8
33	29	9	6	32	1	0	34	4	6	36	8	0
34	30	8	4	33	0	8	35	5	0	37	9	4
35	31	7	2	34	0	4	36	5	6	38	10	8
36	32	6	0	35	0	0	37	6	0	40	0	0

Inches.	Parts.
0	0
10	0
8	0
6	0
4	0
2	0
0	0
10	0
8	0
6	0
4	0
2	0
0	0
10	0
8	0
6	0
4	0
2	0
0	0



TIMBER.

Square of the Side in Inches.

Length in Feet.

	10 by 17			10 by 18			10 by 19			10 by 20		
	Feet.	Inches.	Parts.	Feet.	Inches.	Parts.	Feet.	Inches.	Parts.	Feet.	Inches.	Parts.
18	21	3	0	22	6	0	23	9	0	25	0	0
19	22	5	2	23	9	0	25	0	10	26	4	8
20	23	7	4	25	0	0	26	4	8	27	9	4
21	24	9	6	26	3	0	27	8	6	29	2	0
22	25	11	8	27	6	0	29	0	4	30	6	8
23	27	1	10	28	9	0	30	4	2	31	11	4
24	28	4	0	30	0	0	31	8	0	33	4	0
25	29	6	2	31	3	0	32	11	10	34	8	8
26	30	8	4	32	6	0	34	3	8	36	1	4
27	31	10	6	33	9	0	35	7	6	37	6	0
28	33	0	8	35	0	0	36	11	4	38	10	8
29	34	2	10	36	3	0	38	3	2	40	3	4
30	35	5	0	37	6	0	39	7	0	41	8	0
31	36	7	2	38	9	0	40	10	10	43	0	8
32	37	9	4	40	0	0	42	2	8	44	5	4
33	38	11	6	41	3	0	43	6	6	45	10	0
34	40	1	8	42	6	0	44	10	4	47	2	8
35	41	3	10	43	9	0	46	2	2	48	7	4
36	42	6	0	45	0	0	47	6	0	50	0	0

TIMBER.

Square of the Side in Inches.

Length in Feet.

10 by 21 | 11 by 11 | 11 by 12 | 11 by 13

Length in Feet.	10 by 21			11 by 11			11 by 12			11 by 13		
	Feet.	Inches.	Parts.	Feet.	Inches.	Parts.	Feet.	Inches.	Parts.	Feet.	Inches.	Parts.
18	26	3	0	15	1	6	16	6	0	17	10	6
19	27	8	6	15	11	7	17	5	0	18	10	5
20	29	2	0	16	9	8	18	4	0	19	10	4
21	30	7	6	17	7	9	19	3	0	20	10	3
22	32	1	0	18	5	10	20	2	0	21	10	2
23	33	6	6	19	3	11	21	1	0	22	10	1
24	35	0	0	20	2	0	22	0	0	23	10	0
25	36	5	6	21	0	1	22	11	0	24	9	11
26	37	11	0	21	10	2	23	10	0	25	9	10
27	39	4	6	22	8	3	24	9	0	26	9	9
28	40	10	0	23	6	4	25	8	0	27	9	8
29	42	3	6	24	4	5	26	7	0	28	9	7
30	43	9	0	25	2	6	27	6	0	29	9	6
31	45	2	6	26	0	7	28	5	0	30	9	5
32	46	8	0	26	10	8	29	4	0	31	9	4
33	48	1	6	27	8	9	30	3	0	32	9	3
34	49	7	0	28	6	10	31	2	0	33	9	2
35	51	0	6	29	4	11	32	1	0	34	9	1
36	52	6	0	30	3	0	33	0	0	35	9	0

Inches.	Parts.
0	0
4	8
9	4
2	0
6	8
11	4
4	0
8	8
1	4
6	0
10	8
3	4
8	0
0	8
4	4
10	0
2	8
7	4
0	0

TIMBER.

Square of the Side in Inches.

Length in Feet.	11 by 14			11 by 15			11 by 16			11 by 17		
	Feet.	Inches.	Parts.	Feet.	Inches.	Parts.	Feet.	Inches.	Parts.	Feet.	Inches.	Parts.
18	19	3	0	20	7	6	22	0	0	23	4	6
19	20	3	10	21	9	3	23	2	8	24	8	1
20	21	4	8	22	11	0	24	5	4	25	11	8
21	22	5	6	24	0	9	25	8	0	27	3	3
22	23	6	4	25	2	6	26	10	8	28	6	10
23	24	7	2	26	4	3	28	1	4	29	10	5
24	25	8	0	27	6	0	29	4	0	31	2	0
25	26	8	10	28	7	9	30	6	8	32	5	7
26	27	9	8	29	9	6	31	9	4	33	9	2
27	28	10	6	30	11	3	33	0	0	35	0	9
28	29	11	4	32	1	0	34	2	8	36	4	4
29	31	0	2	33	2	9	35	6	4	37	7	11
30	32	1	0	34	4	6	36	8	0	38	11	6
31	33	1	10	35	5	3	37	10	8	40	3	1
32	34	2	8	36	8	0	39	1	4	41	6	8
33	35	3	6	37	9	9	40	4	0	42	10	3
34	36	4	4	38	11	6	41	6	8	44	1	0
35	37	5	2	40	1	3	42	9	4	45	5	5
36	38	6	0	41	3	0	44	0	0	46	9	0

TIMBER.

Square of the Side in Inches.

Length in Feet.

11 by 18 | 11 by 19 | 11 by 20 | 11 by 21

by 17

Inches.
Parts.

4 6
8 1
11 8
3 3
6 10
10 5
2 0
5 7
9 2
0 9
4 4
7 11
11 6
3 1
6 8
10 3
1 0
5 5
9 0

Feet.
Inches.
Parts.

Feet.
Inches.
Parts.

Feet.
Inches.
Parts.

Feet.
Inches.
Parts.

18	24	9	0	26	1	6	27	6	0	28	10	6
19	26	1	6	27	6	11	29	0	4	30	5	9
20	27	6	0	29	0	4	30	6	8	32	1	0
21	28	10	6	30	5	9	32	1	0	33	8	3
22	30	3	0	31	11	2	33	7	4	35	3	6
23	31	7	6	33	4	7	35	1	8	36	10	9
24	33	0	0	34	10	0	36	8	0	38	6	0
25	34	4	6	36	3	5	38	2	4	40	1	3
26	35	9	0	37	8	10	39	8	8	41	8	6
27	37	1	6	39	2	3	41	3	0	43	3	9
28	38	6	0	40	7	8	42	9	4	44	11	0
29	39	10	6	42	1	1	44	3	8	46	6	3
30	41	3	0	43	6	6	45	10	0	48	1	6
31	42	7	6	44	11	11	47	4	4	49	8	9
32	44	0	0	46	5	3	48	10	8	51	4	0
33	45	4	6	47	10	9	50	5	0	52	11	3
34	46	9	0	49	4	12	51	11	4	54	6	6
35	48	1	6	50	9	7	53	5	8	56	1	9
36	49	6	0	52	3	0	55	0	0	57	9	0

TIMBER.

Square of the Side in Inches.

Length in Feet.	12 by 12				12 by 13				12 by 14				12 by 15			
	Feet.	Inches.	Parts.		Feet.	Inches.	Parts.		Feet.	Inches.	Parts.		Feet.	Inches.	Parts.	
18	18	0	0		19	6	0		21	0	0		22	6	0	
19	19	0	0		20	7	0		22	2	0		23	9	0	
20	20	0	0		21	8	0		23	4	0		25	0	0	
21	21	0	0		22	9	0		24	6	0		26	3	0	
22	22	0	0		23	10	0		25	8	0		27	6	0	
23	23	0	0		24	11	0		26	10	0		28	9	0	
24	24	0	0		26	0	0		28	0	0		30	0	0	
25	25	0	0		27	1	0		29	2	0		31	3	0	
26	26	0	0		28	2	0		30	4	0		32	6	0	
27	27	0	0		29	3	0		31	6	0		33	9	0	
28	28	0	0		30	4	0		32	8	0		35	0	0	
29	29	0	0		31	5	0		33	10	0		36	3	0	
30	30	0	0		32	6	0		35	0	0		37	6	0	
31	31	0	0		33	7	0		36	2	0		38	9	0	
32	32	0	0		34	8	0		37	4	0		40	0	0	
33	33	0	0		35	9	0		38	6	0		41	3	0	
34	34	0	0		36	10	0		39	8	0		42	6	0	
35	35	0	0		37	11	0		40	10	0		43	9	0	
36	36	0	0		39	0	0		42	0	0		45	0	0	

TIMBER.

Square of the Side in Inches.

Length in Feet.

12 by 16 | 12 by 17 | 12 by 18 | 12 by 19

	12 by 16			12 by 17			12 by 18			12 by 19		
	Feet.	Inches.	Parts.	Feet.	Inches.	Parts.	Feet.	Inches.	Parts.	Feet.	Inches.	Parts.
18	24	0	0	25	6	0	27	0	0	28	6	0
19	25	4	0	26	11	0	28	6	0	30	1	0
20	26	8	0	28	4	0	30	0	0	31	8	0
21	28	0	0	29	9	0	31	6	0	33	3	0
22	29	4	0	31	2	0	33	0	0	34	10	0
23	30	8	0	32	7	0	34	6	0	36	5	0
24	32	0	0	34	0	0	36	0	0	38	0	0
25	33	4	0	35	5	0	37	6	0	39	7	0
26	34	8	0	36	10	0	39	0	0	41	2	0
27	36	0	0	38	3	0	40	6	0	42	9	0
28	37	4	0	39	8	0	42	0	0	44	4	0
29	38	8	0	41	1	0	43	6	0	45	11	0
30	40	0	0	42	6	0	45	0	0	47	6	0
31	41	4	0	43	11	0	46	6	0	49	1	0
32	42	8	0	45	4	0	48	0	0	50	8	0
33	44	0	0	46	9	0	49	6	0	52	3	0
34	45	4	0	48	2	0	51	0	0	53	10	0
35	46	8	0	49	7	0	52	6	0	55	5	0
36	48	0	0	51	0	0	54	0	0	57	0	0

Feet.	Inches.	Parts.
22	6	0
23	9	0
25	0	0
26	3	0
27	6	0
28	9	0
30	0	0
31	3	0
32	6	0
33	9	0
35	0	0
36	3	0
37	6	0
38	9	0
40	0	0
41	3	0
42	6	0
43	9	0
45	0	0
46	3	0
47	6	0
48	9	0
50	0	0
51	3	0
52	6	0
53	9	0
55	0	0

TIMBER.

Square of the Side in Inches.

Length in Feet.

	12 by 20			12 by 21			12 by 22			12 by 23		
	Feet.	Inches.	Parts.	Feet.	Inches.	Parts.	Feet.	Inches.	Parts.	Feet.	Inches.	Parts.
18	30	0	0	31	6	0	33	0	0	34	6	0
19	31	8	0	33	3	0	34	10	0	36	5	0
20	33	4	0	35	0	0	36	8	0	38	4	0
21	35	0	0	36	9	0	38	6	0	40	3	0
22	36	8	0	38	6	0	40	4	0	42	2	0
23	38	4	0	40	3	0	42	2	0	44	1	0
24	40	0	0	42	0	0	44	0	0	46	0	0
25	41	8	0	43	9	0	45	10	0	47	11	0
26	43	4	0	45	6	0	47	8	0	49	10	0
27	45	0	0	47	3	0	49	6	0	51	9	0
28	46	8	0	49	0	0	51	4	0	53	8	0
29	48	4	0	50	9	0	53	2	0	55	7	0
30	50	0	0	52	6	0	55	0	0	57	6	0
31	51	8	0	54	3	0	56	10	0	59	5	0
32	53	4	0	56	0	0	58	8	0	61	4	0
33	55	0	0	57	9	0	60	6	0	63	3	0
34	56	8	0	59	6	0	62	4	0	65	2	0
35	58	4	0	61	3	0	64	2	0	67	1	0
36	60	0	0	63	0	0	66	0	0	69	0	0

TIMBER.

Square of the Side in Inches.

Length in Feet.

12 by 24 | 13 by 13 | 13 by 14 | 13 by 15

ches.
12 by 23

Feet.	Inches.	Parts.
34	6	0
36	5	0
38	4	0
40	3	0
42	2	0
44	1	0
46	0	0
47	11	0
49	10	0
51	9	0
53	8	0
55	7	0
57	6	0
59	5	0
61	4	0
63	3	0
65	2	0
67	1	0
69	0	0

Length in Feet.	12 by 24			13 by 13			13 by 14			13 by 15		
	Feet.	Inches.	Parts.	Feet.	Inches.	Parts.	Feet.	Inches.	Parts.	Feet.	Inches.	Parts.
18	36	0	0	21	1	6	22	9	0	24	4	6
19	38	0	0	22	3	7	24	0	2	25	8	9
20	40	0	0	23	5	8	25	3	4	27	1	0
21	42	0	0	24	7	9	26	6	6	28	5	3
22	44	0	0	25	9	10	27	9	8	39	9	6
23	46	0	0	26	11	11	29	0	10	31	1	9
24	48	0	0	28	2	0	30	4	0	32	6	0
25	50	0	0	29	4	1	31	7	2	33	10	3
26	52	0	0	30	6	2	32	10	4	35	2	6
27	54	0	0	31	8	3	34	1	6	36	6	9
28	56	0	0	32	10	4	35	4	8	37	11	0
29	58	0	0	34	0	5	36	7	10	39	3	3
30	60	0	0	35	2	6	37	11	0	40	7	6
31	62	0	0	36	4	7	39	2	2	41	11	9
32	64	0	0	37	6	8	40	5	4	43	4	0
33	66	0	0	38	8	9	41	8	6	44	8	3
34	68	0	0	39	10	10	42	11	8	46	0	6
35	70	0	0	41	0	11	44	2	10	47	4	9
36	72	0	0	42	3	0	45	6	0	48	9	0

TIMBER.

Square of the Side in Inches.

Length in Feet.

	13 by 16			13 by 17			13 by 18			13 by 19		
	Feet.	Inches.	Parts.	Feet.	Inches.	Parts.	Feet.	Inches.	Parts.	Feet.	Inches.	Parts.
18	26	0	0	27	7	6	29	3	0	30	10	6
19	27	5	4	29	1	11	30	10	6	32	7	1
20	28	10	8	30	8	4	32	6	0	34	3	8
21	30	4	0	32	2	9	34	1	6	36	0	3
22	31	9	4	33	9	2	35	9	0	37	8	10
23	33	2	8	35	3	7	37	4	6	39	5	5
24	34	8	0	36	10	0	39	0	0	41	2	0
25	36	1	4	38	4	5	40	7	6	42	10	7
26	37	6	8	39	10	10	42	3	0	44	7	2
27	39	0	0	41	5	3	43	10	6	46	3	9
28	40	5	4	42	11	8	45	6	0	48	0	4
29	41	10	8	44	6	1	47	1	6	49	8	11
30	43	4	0	46	0	6	48	9	0	51	5	6
31	44	9	4	47	6	11	50	4	6	53	2	1
32	46	2	8	49	1	4	52	0	0	54	10	8
33	47	8	0	50	7	9	53	7	6	56	7	3
34	49	1	4	52	2	2	55	3	0	58	3	10
35	50	6	8	53	8	7	56	10	6	60	0	5
36	52	0	0	55	3	0	58	6	0	61	9	0

Inches.

13 by 19

Feet.	Inches.	Parts.
30	10	6
32	7	1
34	3	8
36	0	3
37	8	10
39	5	5
41	2	0
42	10	7
44	7	2
46	3	9
48	0	4
49	8	11
51	5	6
53	2	1
54	10	8
56	7	3
58	3	10
60	0	5
61	9	0

TIMBER.

Square of the Side in Inches.

13 by 20 | 13 by 21 | 13 by 22 | 13 by 23

Length in Feet.

Length in Feet.	13 by 20			13 by 21			13 by 22			13 by 23		
	Feet.	Inches.	Parts.	Feet.	Inches.	Parts.	Feet.	Inches.	Parts.	Feet.	Inches.	Parts.
18	32	6	0	34	1	6	35	9	0	37	4	6
19	34	3	8	36	0	3	37	8	10	39	5	5
20	36	1	4	37	11	0	39	8	8	41	6	4
21	37	11	0	39	9	9	41	8	6	43	7	3
22	39	8	8	41	8	6	43	8	4	45	8	2
23	41	6	4	43	7	3	45	8	2	47	9	1
24	43	4	0	45	6	0	47	8	0	49	10	0
25	45	1	8	47	4	9	49	7	10	51	10	11
26	46	11	4	49	3	6	51	7	8	53	11	10
27	48	9	0	51	2	3	53	7	6	56	0	9
28	50	6	8	53	1	0	55	7	4	58	1	8
29	52	4	4	54	11	9	57	7	2	60	2	7
30	54	2	0	56	10	6	59	7	0	62	3	6
31	55	11	8	58	9	3	61	6	10	64	4	5
32	57	9	4	60	8	0	63	6	8	66	5	4
33	59	7	0	62	6	9	65	6	6	68	6	3
34	61	4	8	64	5	6	67	6	4	70	7	2
35	63	2	4	66	4	3	69	6	2	72	8	1
36	65	0	0	68	3	0	71	6	0	74	9	0

TIMBER.

Square of the Side in Inches.

Length in Feet.

Length in Feet.	13 by 24				14 by 14			14 by 15			14 by 16		
	Feet.	Inches.	Parts.		Feet.	Inches.	Parts.	Feet.	Inches.	Parts.	Feet.	Inches.	Parts.
18	39	0	0		24	6	0	26	3	0	28	0	0
19	41	2	0		25	10	4	27	8	6	29	6	8
20	43	4	0		27	2	8	29	2	0	31	1	4
21	45	6	0		28	7	0	30	7	6	32	8	0
22	47	8	0		29	11	4	32	1	0	34	2	8
23	49	10	0		31	3	8	33	6	6	35	9	4
24	52	0	0		32	8	0	35	0	0	37	4	0
25	54	2	0		34	0	4	36	5	6	38	10	8
26	56	4	0		35	4	8	37	11	0	40	5	4
27	68	6	0		36	9	0	39	4	6	42	0	0
28	60	8	0		38	1	4	40	10	0	43	6	8
29	62	10	0		39	5	8	42	3	6	45	1	4
30	65	0	0		40	10	0	43	9	0	46	8	0
31	67	2	0		42	2	4	45	2	6	48	2	8
32	69	4	0		43	6	8	46	8	0	49	9	4
33	71	6	0		44	11	0	48	1	6	51	5	0
34	73	8	0		46	3	4	49	7	0	52	10	8
35	75	10	0		47	7	8	51	0	6	54	5	4
36	78	0	0		49	0	0	52	6	0	56	0	0

ches.

14 by 16

Feet.	Inches.	Parts.
28	0	0
29	6	8
31	1	4
32	8	0
34	2	8
35	9	4
37	4	0
38	10	8
40	5	4
42	0	0
43	6	8
45	1	4
46	8	0
48	2	8
49	9	4
51	5	0
52	10	8
54	5	4
56	0	0

POCKET RECKONER.

23

TIMBER.

Square of the Side in Inches.

Length in Feet.

14 by 17 | 14 by 18 | 14 by 19 | 14 by 20

Length in Feet.	14 by 17			14 by 18			14 by 19			14 by 20		
	Feet.	Inches.	Parts.	Feet.	Inches.	Parts.	Feet.	Inches.	Parts.	Feet.	Inches.	Parts.
18	29	9	0	31	6	0	33	3	0	35	0	0
19	31	4	10	33	3	0	35	1	2	36	11	4
20	33	0	8	35	0	0	36	11	4	38	10	8
21	34	8	6	36	9	0	38	9	6	40	10	0
22	36	4	4	38	6	0	40	7	8	42	9	4
23	38	0	2	40	3	0	42	5	10	44	8	8
24	39	8	0	42	0	0	44	4	0	46	8	0
25	41	3	10	43	9	0	46	2	2	48	7	4
26	42	11	8	45	6	0	48	0	4	50	6	8
27	44	7	6	47	3	0	49	10	6	52	6	0
28	46	3	4	49	0	0	51	8	8	54	5	4
29	47	11	2	50	9	0	53	6	10	56	4	8
30	49	7	0	52	6	0	55	5	0	58	4	0
31	51	2	10	54	3	0	57	3	2	60	3	4
32	52	10	8	56	0	0	59	1	4	62	2	8
33	54	6	6	57	9	0	60	11	6	64	2	0
34	56	2	4	59	6	0	62	9	8	66	1	4
35	57	10	2	61	3	0	64	7	10	68	0	8
36	59	6	0	63	0	0	66	6	0	70	0	0

TIMBER.

Square of the Side in Inches.

Length in Feet.

	14 by 21			14 by 22			14 by 23			14 by 24		
	Feet.	Inches.	Parts.	Feet.	Inches.	Parts.	Feet.	Inches.	Parts.	Feet.	Inches.	Parts.
18	36	9	0	38	6	0	40	3	0	42	0	0
19	38	9	6	40	7	8	42	5	10	44	4	0
20	40	10	0	42	9	4	44	8	8	46	8	0
21	42	10	6	44	11	0	46	11	6	49	0	0
22	44	11	0	47	0	8	49	2	4	51	4	0
23	46	11	6	49	2	4	51	5	2	53	8	0
24	49	0	0	51	4	0	53	8	0	56	0	0
25	51	0	6	53	5	8	55	10	10	58	4	0
26	53	1	0	55	7	4	58	1	8	60	8	0
27	55	1	6	57	9	0	60	4	6	63	0	0
28	57	2	0	59	10	8	62	7	4	65	4	0
29	59	2	6	62	0	4	64	10	2	67	8	0
30	61	3	0	64	2	0	67	1	0	70	0	0
31	63	3	6	66	3	8	69	3	10	72	4	0
32	65	4	0	68	5	4	71	6	8	74	8	0
33	67	4	6	70	7	0	73	9	6	77	0	0
34	69	5	0	72	8	8	76	0	4	79	4	0
35	71	5	6	74	10	4	78	3	2	81	8	0
36	73	6	0	77	0	0	80	6	0	84	0	0

Length in Feet.

18
19
20
21
22
23
24
25
26
27
28
29
30
31
32
33
34
35
36

R.

ches.

14 by 24

Feet.	Inches.	Parts.
42	0	0
44	4	0
46	8	0
49	0	0
51	4	0
53	8	0
56	0	0
58	4	0
60	8	0
63	0	0
65	4	0
67	8	0
70	0	0
72	4	0
74	8	0
77	0	0
79	4	0
81	8	0
84	0	0

TIMBER.

Square of the Side in Inches.

Length in Feet.

15 by 15 | 15 by 16 | 15 by 17 | 15 by 18

Length in Feet.	15 by 15			15 by 16			15 by 17			15 by 18		
	Feet.	Inches.	Parts.	Feet.	Inches.	Parts.	Feet.	Inches.	Parts.	Feet.	Inches.	Parts.
18	28	1	6	30	0	0	31	10	6	33	9	0
19	29	8	3	31	8	0	33	7	9	35	7	6
20	31	3	0	33	4	0	35	5	0	37	6	0
21	32	9	9	35	0	0	37	2	3	39	4	6
22	34	4	6	36	8	0	38	11	6	41	3	0
23	55	11	3	38	4	0	40	8	9	43	1	6
24	37	6	0	40	0	0	42	6	0	45	0	0
25	39	0	9	41	8	0	44	3	3	46	10	6
26	40	7	6	43	4	0	46	0	6	48	9	0
27	42	2	3	45	0	0	47	9	9	50	7	6
28	43	9	0	46	8	0	49	7	0	52	6	0
29	45	3	9	48	4	0	51	4	3	54	4	6
30	46	10	6	50	0	0	53	1	6	56	3	0
31	48	5	3	51	8	0	54	10	9	58	1	6
32	50	0	0	53	4	0	56	8	0	60	0	0
33	51	6	9	55	0	0	58	5	3	61	10	6
34	53	1	6	56	8	0	60	2	6	63	9	0
35	54	8	3	58	4	0	61	11	9	65	7	6
36	56	3	0	60	0	0	63	9	0	67	6	0

TIMBER.

Square of the Side in Inches.

Length in Feet.	Square of the Side in Inches.											
	15 by 19			15 by 20			15 by 21			15 by 22		
	Feet.	Inches.	Parts.	Feet.	Inches.	Parts.	Feet.	Inches.	Parts.	Feet.	Inches.	Parts.
18	35	7	6	37	6	0	39	4	6	41	3	0
19	37	7	3	39	7	0	41	6	9	43	6	6
20	39	7	0	41	8	0	43	9	0	45	10	0
21	41	6	9	43	9	0	45	11	3	48	1	6
22	43	6	6	45	10	0	48	1	6	50	5	0
23	45	6	3	47	11	0	50	3	9	52	8	6
24	47	6	0	50	0	0	52	6	0	55	0	0
25	49	5	9	52	1	0	54	8	3	57	3	6
26	51	5	6	54	2	0	56	10	6	59	7	0
27	53	5	3	56	3	0	59	0	9	61	10	6
28	55	5	0	58	4	0	61	3	0	64	2	0
29	57	4	9	60	5	0	63	5	3	66	5	6
30	59	4	6	62	6	0	65	7	6	68	9	0
31	61	4	3	64	7	0	67	9	9	71	0	6
32	63	4	0	66	8	0	70	0	0	73	4	0
33	65	3	9	68	9	0	72	2	3	75	7	6
34	67	3	6	70	10	0	74	4	6	77	11	0
35	69	3	3	72	11	0	76	6	9	80	2	6
36	71	3	0	75	0	0	78	9	0	82	6	0

TIMBER.

Square of the Side in Inches.

Length in Feet.

15 by 23 | 15 by 24 | 16 by 16 | 16 by 17

es.
5 by 22

Feet.
Inches.
Parts.

11 3 0
13 6 6
15 10 0
18 1 6
20 5 0
22 8 6
25 0 0
27 3 6
29 7 0
31 10 6
34 2 0
36 5 6
38 9 0
41 0 6
43 4 0
45 7 6
47 11 0
50 2 6
52 6 0

Length in Feet.	15 by 23			15 by 24			16 by 16			16 by 17		
	Feet.	Inches.	Parts.	Feet.	Inches.	Parts.	Feet.	Inches.	Parts.	Feet.	Inches.	Parts.
18	43	1	6	45	0	0	32	0	0	34	0	0
19	45	6	3	47	6	0	33	9	4	35	10	8
20	47	11	0	50	0	0	35	6	8	37	9	4
21	50	3	9	52	6	0	37	4	0	39	8	0
22	52	8	6	55	0	0	39	1	4	41	6	8
23	55	1	3	57	6	0	40	10	8	43	5	4
24	57	6	0	60	0	0	42	8	0	45	4	0
25	59	10	9	62	6	0	44	5	4	47	2	8
26	62	3	6	65	0	0	46	2	8	49	1	4
27	64	8	3	67	6	0	48	0	0	51	0	0
28	67	1	0	70	0	0	49	9	4	52	10	8
29	69	5	9	72	6	0	51	6	8	54	9	4
30	71	10	6	75	0	0	53	4	0	56	8	0
31	74	3	3	77	6	0	55	1	4	58	6	8
32	76	8	0	80	0	0	56	10	8	60	5	4
33	79	0	9	82	6	0	58	8	0	62	4	0
34	81	5	6	85	0	0	60	5	4	64	2	8
35	83	10	3	87	6	0	62	2	8	66	1	4
36	86	3	0	90	0	0	64	0	0	68	0	0

TIMBER.

Square of the Side in Inches.

Length in Feet.

	16 by 18			16 by 19			16 by 20			16 by 21		
	Feet.	Inches.	Parts.	Feet.	Inches.	Parts.	Feet.	Inches.	Parts.	Feet.	Inches.	Parts.
18	36	0	0	38	0	0	40	0	0	42	0	0
19	38	0	0	40	1	4	42	2	8	44	4	0
20	40	0	0	42	2	8	44	5	4	46	8	0
21	42	0	0	44	4	0	46	8	0	49	0	0
22	44	0	0	46	5	4	48	10	8	51	4	0
23	46	0	0	48	6	8	51	1	4	53	8	0
24	48	0	0	50	8	0	53	4	0	56	0	0
25	50	0	0	52	9	4	55	6	8	58	4	0
26	52	0	0	54	10	8	57	9	4	60	8	0
27	54	0	0	57	0	0	60	0	0	63	0	0
28	56	0	0	59	1	4	62	2	8	65	4	0
29	58	0	0	61	2	8	64	5	4	67	8	0
30	60	0	0	63	4	0	66	8	0	70	0	0
31	62	0	0	65	5	4	68	10	8	72	4	0
32	64	0	0	67	6	8	71	1	4	74	8	0
33	66	0	0	69	8	0	73	4	0	77	0	0
34	68	0	0	71	9	4	75	6	8	79	4	0
35	70	0	0	73	10	8	77	9	4	81	8	0
36	72	0	0	76	0	0	80	0	0	84	0	0

TIMBER.

Square of the Side in Inches.

Length in Feet.

16 by 22 | 16 by 23 | 16 by 24 | 17 by 17

ches.
16 by 21

Feet.	Inches.	Parts.
42	0	0
44	4	0
46	8	0
49	0	0
51	4	0
53	8	0
56	0	0
58	4	0
60	8	0
63	0	0
65	4	0
67	8	0
70	0	0
72	4	0
74	8	0
77	0	0
79	4	0
81	8	0
84	0	0

	16 by 22			16 by 23			16 by 24			17 by 17		
	Feet.	Inches.	Parts.	Feet.	Inches.	Parts.	Feet.	Inches.	Parts.	Feet.	Inches.	Parts.
18	44	0	0	46	0	0	48	0	0	36	1	6
19	46	5	4	48	6	8	50	8	0	38	1	7
20	48	10	8	51	1	4	53	4	0	40	1	8
21	51	4	0	53	8	0	56	0	0	42	1	9
22	53	9	4	56	2	8	58	8	0	44	1	10
23	56	2	8	58	9	4	61	4	0	46	1	11
24	58	8	0	61	4	0	64	0	0	48	2	0
25	61	1	4	63	10	8	66	8	0	50	2	1
26	63	6	8	66	5	4	69	4	0	52	2	2
27	66	0	0	69	0	0	72	0	0	54	2	3
28	68	5	4	71	6	8	74	8	0	56	2	4
29	70	10	8	74	1	4	77	4	0	58	2	5
30	73	4	0	76	8	0	80	0	0	60	2	6
31	75	9	4	79	2	8	82	8	0	62	2	7
32	78	2	8	81	19	4	85	4	0	64	2	8
33	80	8	0	84	4	0	88	0	0	66	2	9
34	83	1	4	86	10	8	90	8	0	68	2	10
35	85	6	8	89	5	4	93	4	0	70	2	11
36	88	0	0	92	0	0	96	0	0	72	3	0

TIMBER.

Square of the Side in Inches.

Length in Feet.	Square of the Side in Inches.											
	17 by 18			17 by 19			17 by 20			17 by 21		
	Feet.	Inches.	Parts.	Feet.	Inches.	Parts.	Feet.	Inches.	Parts.	Feet.	Inches.	Parts.
18	38	3	0	40	4	6	42	6	0	44	7	6
19	40	4	6	42	7	5	44	10	4	47	1	3
20	42	6	0	44	10	4	47	2	8	49	7	0
21	44	7	6	47	1	3	49	7	0	52	0	9
22	46	9	0	49	4	2	51	11	4	54	6	6
23	48	10	6	51	7	1	54	3	8	57	0	3
24	51	0	0	53	10	0	56	8	0	59	6	0
25	53	1	6	56	0	11	59	0	4	61	11	9
26	55	3	0	58	3	10	61	4	8	64	5	6
27	57	4	6	60	6	9	63	9	0	66	11	3
28	59	6	0	62	9	8	66	1	4	69	5	0
29	61	7	6	65	0	7	68	5	8	71	10	9
30	63	9	0	67	3	6	70	10	0	74	4	6
31	65	10	6	69	6	5	73	2	4	76	10	3
32	68	0	0	71	9	4	75	6	8	79	4	0
33	70	1	6	74	0	3	77	11	0	81	9	9
34	72	3	0	76	3	2	80	3	4	84	3	6
35	74	4	6	78	6	1	82	7	8	86	9	3
36	76	6	0	80	9	0	85	0	0	89	3	0

Inches.

17 by 21

Feet.	Inches.	Parts.
44	7	6
47	1	3
49	7	0
52	0	9
54	6	6
57	0	3
59	6	0
61	11	9
64	5	6
66	11	3
69	5	0
71	10	9
74	4	6
76	10	3
79	4	0
81	9	9
84	3	6
86	9	3
89	3	0

TIMBER.

Square of the Side in Inches.

Length in Feet.

Length in Feet.	17 by 22			17 by 23			17 by 24			18 by 18		
	Feet.	Inches.	Parts.	Feet.	Inches.	Parts.	Feet.	Inches.	Parts.	Feet.	Inches.	Parts.
18	46	9	0	48	10	6	51	0	0	40	6	0
19	49	4	2	51	7	1	53	10	0	42	9	0
20	51	11	4	54	3	8	56	8	0	45	0	0
21	54	6	6	57	0	3	59	6	0	47	3	0
22	57	1	8	59	8	10	62	4	0	49	6	0
23	59	8	10	62	5	5	65	2	0	51	9	0
24	62	4	0	65	2	0	68	0	0	54	0	0
25	64	11	2	67	10	7	70	10	0	56	3	0
26	67	6	4	70	7	2	73	8	0	58	9	0
27	70	1	6	73	3	9	76	6	0	60	6	0
28	72	8	8	76	0	4	79	4	0	63	0	0
29	75	3	10	78	8	11	82	2	0	65	3	0
30	77	11	0	81	5	6	85	0	0	67	6	0
31	80	6	2	84	2	1	87	10	0	69	9	0
32	83	1	4	86	10	8	90	8	0	72	0	0
33	85	8	6	89	7	3	93	6	0	74	3	0
34	88	3	8	92	3	10	96	4	0	76	6	0
35	90	10	10	95	0	5	99	2	0	78	9	0
36	93	6	0	97	9	0	102	0	0	81	0	0

TIMBER.

Square of the Side in Inches.

Length in Feet.

	18 by 19			18 by 20			18 by 21			18 by 22		
	Feet.	Inches.	Parts.	Feet.	Inches.	Parts.	Feet.	Inches.	Parts.	Feet.	Inches.	Parts.
18	42	9	0	45	0	0	47	3	0	49	6	0
19	45	1	6	47	6	0	49	10	6	52	3	0
20	47	6	0	50	0	0	52	6	0	55	0	0
21	49	10	6	52	6	0	55	1	6	57	9	0
22	52	3	0	55	0	0	57	9	0	60	6	0
23	54	7	6	57	6	0	60	4	6	63	3	0
24	57	0	0	60	0	0	63	0	0	66	0	0
25	59	4	6	62	6	0	65	7	6	68	9	0
26	61	9	0	65	0	0	68	3	0	71	6	0
27	64	1	6	67	6	0	70	10	6	74	3	0
28	66	6	0	70	0	0	73	6	0	77	0	0
29	68	10	6	72	6	0	76	1	6	79	9	0
30	71	3	0	75	0	0	78	9	0	82	6	0
31	73	7	6	77	6	0	81	4	6	85	3	0
32	76	0	0	80	0	0	84	0	0	88	0	0
33	78	4	6	82	6	0	86	7	6	90	9	0
34	80	9	0	85	0	0	89	3	0	93	6	0
35	83	1	6	87	6	0	91	10	6	96	3	0
36	85	6	0	90	0	0	94	6	0	99	0	0

TIMBER.

Square of the Side in Inches.

Length in Feet.

Length in Feet.	18 by 23			18 by 24			19 by 19			19 by 20		
	Feet.	Inches.	Parts.	Feet.	Inches.	Parts.	Feet.	Inches.	Parts.	Feet.	Inches.	Parts.
18	51	9	0	54	0	0	45	1	6	47	6	0
19	54	7	6	57	0	0	47	7	7	50	1	8
20	57	6	0	60	0	0	50	1	8	52	9	4
21	60	4	6	63	0	0	52	7	9	55	5	0
22	63	3	0	66	0	0	55	1	10	58	0	8
23	66	1	6	69	0	0	57	7	11	60	8	4
24	69	0	0	72	0	0	60	2	0	63	4	0
25	71	10	6	75	0	0	62	8	1	65	11	8
26	74	9	0	78	0	0	65	2	2	68	7	4
27	77	7	6	81	0	0	67	8	3	71	3	0
28	80	6	0	84	0	0	70	2	4	73	10	8
29	83	4	6	87	0	0	72	8	5	76	6	4
30	86	3	0	90	0	0	75	2	6	79	2	0
31	89	1	6	93	0	0	77	8	7	81	9	8
32	92	0	0	96	0	0	80	2	8	84	5	4
33	94	10	6	99	0	0	82	8	9	87	1	0
34	97	9	0	102	0	0	85	2	10	89	8	8
35	100	7	6	105	0	0	87	8	11	92	4	4
36	103	6	0	108	0	0	90	3	0	95	0	0

TIMBER.

Square of the Side in Inches.

Length in Feet.

19 by 21 | 19 by 22 | 19 by 23 | 19 by 24

	19 by 21			19 by 22			19 by 23			19 by 24		
	Feet.	Inches.	Parts.	Feet.	Inches.	Parts.	Feet.	Inches.	Parts.	Feet.	Inches.	Parts.
18	49	10	6	52	3	0	54	7	6	57	0	0
19	52	7	9	55	1	10	57	7	11	60	2	0
20	55	5	0	58	0	8	60	8	4	63	4	0
21	58	2	3	60	11	6	63	8	9	66	6	0
22	60	11	6	63	10	4	66	9	2	69	8	0
23	63	8	9	66	9	2	69	9	7	72	10	0
24	66	6	0	69	8	0	72	10	0	76	0	0
25	69	3	3	72	6	10	75	10	5	79	2	0
26	72	0	6	75	5	8	78	10	10	82	4	0
27	74	9	9	78	4	6	81	11	3	85	6	0
28	77	7	0	81	3	4	84	11	8	88	8	0
29	80	4	3	84	2	2	88	0	1	91	10	0
30	83	1	6	87	1	0	91	0	6	95	0	0
31	85	10	9	89	11	10	94	0	11	98	2	0
32	88	8	0	92	10	8	97	1	4	101	4	0
33	91	5	3	95	9	6	100	1	9	104	6	0
34	94	2	6	98	8	4	103	2	2	107	8	0
35	96	11	9	101	7	2	106	2	7	110	10	0
36	99	9	0	104	6	0	109	3	0	114	0	0

TIMBER.

Square of the Side in Inches.

Length in Feet.

20 by 24 | 21 by 21 | 21 by 22 | 21 by 23

	20 by 24			21 by 21			21 by 22			21 by 23		
	Feet.	Inches.	Parts.	Feet.	Inches.	Parts.	Feet.	Inches.	Parts.	Feet.	Inches.	Parts.
18	60	0	0	55	1	6	57	9	0	60	4	6
19	63	4	0	58	2	3	60	11	6	63	8	9
20	66	8	0	61	3	0	64	2	0	67	1	0
21	70	0	0	64	3	9	67	4	6	70	5	3
22	73	4	0	67	4	6	70	7	0	73	9	6
23	76	8	0	70	5	3	73	9	6	77	1	9
24	80	0	0	73	6	0	77	0	0	80	6	0
25	83	4	0	76	6	9	80	2	6	83	10	3
26	86	8	0	79	7	6	83	5	0	87	2	6
27	90	0	0	82	8	3	86	7	6	90	6	9
28	93	4	0	85	9	0	89	10	0	93	11	0
29	96	8	0	88	9	9	93	0	6	97	3	3
30	100	0	0	91	10	6	96	3	0	100	7	6
31	103	4	0	94	11	3	99	5	6	103	11	9
32	106	8	0	98	0	0	102	8	0	107	4	0
33	110	0	0	101	0	9	105	10	6	110	8	3
34	113	4	0	104	1	6	109	1	0	114	0	6
35	116	8	0	107	2	3	112	3	6	117	4	9
36	120	0	0	110	3	0	115	6	0	120	9	0

TIMBER.

Square of the Side in Inches.

Length in Feet.	21 by 24				22 by 22			22 by 23			22 by 24		
	Feet.	Inches.	Parts.	Feet.	Inches.	Parts.	Feet.	Inches.	Parts.	Feet.	Inches.	Parts.	
	18	63	0	0	60	6	0	63	3	0	66	0	0
19	66	6	0	63	10	4	66	9	2	69	8	0	
20	70	0	0	67	2	8	70	3	4	73	4	0	
21	78	6	0	70	7	0	73	9	6	77	0	0	
22	77	0	0	73	11	4	77	3	8	80	8	0	
23	80	6	0	77	3	8	80	9	10	84	4	0	
24	84	0	0	80	8	0	84	4	0	88	0	0	
25	87	6	0	84	0	4	87	10	2	91	8	0	
26	91	0	0	87	4	8	91	4	4	95	4	0	
27	94	6	0	90	9	0	94	10	6	99	0	0	
28	98	0	0	94	1	4	98	4	8	102	8	0	
29	101	6	0	97	5	8	101	10	10	106	4	0	
30	105	0	0	100	10	0	105	5	0	110	0	0	
31	108	6	0	104	2	4	108	11	2	113	8	0	
32	112	0	0	107	6	8	112	5	4	117	4	0	
33	115	6	0	110	11	0	115	11	6	121	0	0	
34	119	0	0	114	3	4	119	5	8	124	8	0	
35	122	6	0	117	7	8	122	11	10	128	4	0	
36	126	0	0	121	0	0	126	6	0	132	0	0	

23
Parts.
6
9
0
3
6
9
0
3
6
9
0
3
6
9
0
3
6
9
0

TIMBER.

Square of the Side in Inches.

Length in Feet.

23 by 23 | 23 by 24 | 24 by 24 | 24 by 25

	23 by 23			23 by 24			24 by 24			24 by 25		
	Feet.	Inches.	Parts.	Feet.	Inches.	Parts.	Feet.	Inches.	Parts.	Feet.	Inches.	Parts.
18	66	1	6	69	0	0	72	0	0	75	0	0
19	69	9	7	72	10	0	76	0	0	79	2	0
20	73	5	8	76	8	0	80	0	0	83	4	0
21	77	1	9	80	6	0	84	0	0	87	6	0
22	80	9	10	84	4	0	88	0	0	91	8	0
23	84	5	11	88	2	0	92	0	0	95	10	0
24	88	2	0	92	0	0	96	0	0	100	0	0
25	91	10	1	95	10	0	100	0	0	104	2	0
26	95	6	2	99	8	0	104	0	0	108	4	0
27	99	2	3	103	6	0	108	0	0	112	6	0
28	102	10	4	107	4	0	112	0	0	116	8	0
29	106	6	5	111	2	0	116	0	0	120	10	0
30	110	2	6	115	0	0	120	0	0	125	0	0
31	113	10	7	118	10	0	124	0	0	129	2	0
32	117	6	8	122	8	0	128	0	0	133	4	0
33	121	2	9	126	6	0	132	0	0	137	6	0
34	124	10	10	130	4	0	136	0	0	141	8	0
35	128	6	11	134	2	0	140	0	0	145	10	0
36	132	3	0	138	0	0	144	0	0	150	0	0

SAW-LOGS

REDUCED TO

BOARD MEASURE.

The following Table gives the quantity of Boards produced from a Saw-Log of different dimensions. Example — I sell to a miller a Log 15 feet long, and 18 inches diameter at the small end, at a given price per thousand feet, board measure: to find the quantity of boards produced from a Log of that size, refer to the column on the left, and find the length 15 feet; and under the diameter 18 inches, you find the quantity to be 184 feet; fractions omitted.

SAW-LOGS REDUCED TO BOARD
MEASURE.

Length in Feet.	Inches in diameter at small end.								
	12	13	14	15	16	17	18	19	20
	Feet.	Feet.	Feet.	Feet.	Feet.	Feet.	Feet.	Feet.	Feet.
10	40	50	62	75	90	105	122	140	160
11	44	55	69	83	99	116	135	154	176
12	48	61	75	91	108	126	147	168	192
13	52	66	81	98	117	137	159	183	208
14	56	71	88	106	126	148	171	197	224
15	60	76	94	115	135	158	184	201	240
16	64	81	100	121	144	169	196	225	256
17	68	86	106	128	153	179	208	239	272
18	72	91	112	136	162	190	220	253	288
19	76	96	119	143	171	201	232	267	304
20	80	101	125	151	180	211	244	281	320
21	84	106	131	158	189	222	257	295	336
22	88	111	137	166	198	232	269	309	352
23	92	116	144	174	207	243	281	323	368
24	96	122	150	181	216	254	294	337	384
25	100	127	156	189	225	264	308	351	400

SAW-LOGS REDUCED TO BOARD
MEASURE.

Length in Feet.	Inches in diameter at small end.						
	21	22	23	24	25	26	27
	<i>Feet.</i>	<i>Feet.</i>	<i>Feet.</i>	<i>Feet.</i>	<i>Feet.</i>	<i>Feet.</i>	<i>Feet.</i>
10	180	202	225	250	275	302	330
11	198	223	248	275	302	333	363
12	217	243	271	300	331	363	397
13	235	263	293	325	358	393	430
14	253	283	313	350	386	433	463
15	271	303	336	375	413	453	496
16	289	324	359	400	441	484	530
17	307	344	383	425	468	514	563
18	325	364	406	450	496	544	596
19	343	384	429	475	523	574	630
20	361	404	452	500	551	605	661
21	379	425	473	525	579	635	693
22	397	445	496	550	605	665	726
23	415	465	519	575	632	695	760
24	433	486	541	600	661	726	794
25	451	506	562	625	689	756	827

SAW-LOGS REDUCED TO BOARD MEASURE.

Length in Feet.	Inches in diameter at small end.								
	28	29	30	31	32	33	34	35	36
	<i>Feet.</i>	<i>Feet.</i>	<i>Feet.</i>	<i>Feet.</i>	<i>Feet.</i>	<i>Feet.</i>	<i>Feet.</i>	<i>Feet.</i>	<i>Feet.</i>
10	360	390	422	456	490	525	562	601	640
11	396	430	465	502	539	578	619	661	704
12	432	469	507	547	588	631	675	721	768
13	468	508	549	592	637	684	731	781	832
14	504	547	591	638	686	736	787	841	896
15	540	586	633	683	735	789	844	901	960
16	576	625	676	729	784	842	900	961	1024
17	612	664	718	774	833	895	956	1021	1088
18	648	703	761	820	882	946	1012	1081	1152
19	684	742	803	865	931	999	1069	1141	1216
20	720	781	845	912	980	1051	1125	1201	1280
21	756	820	887	956	1029	1103	1181	1261	1344
22	792	859	930	1004	1078	1156	1238	1321	1408
23	828	898	972	1049	1127	1209	1295	1381	1472
24	864	938	1014	1094	1176	1262	1352	1441	1536
25	900	977	1056	1139	1225	1315	1408	1501	1600

TABLE
OF
BOARDS AND PLANK.

The following Table gives the number of square feet and inches contained in a Board one inch thick, from 10 to 20 feet long, and from 6 to 24 inches broad; and from 21 to 55 feet long, and from 12 to 20 inches broad. The column on the left, is the length, and the caption the breadth in inches; under which, and opposite to the length of a board, you have its contents in feet and inches. Example — Require the contents of a Board 35 feet long and 20 inches broad; by reference, you will find it to be 58 feet, 4 inches.

In measuring Boards, it is not customary to add the extra inches in length; but where ship or other long and thick plank is measured, it makes an essential difference, which, however, in some measure may be remedied, by omitting all under 6 inches over the foot, and calling all over equal to a foot — in a large quantity, the difference will be trifling.

BOARDS AND PLANK.

Inches Wide.

Length in Feet.

	6	7	8	9	10	11	12	13	14	15
10	5 0	5 10	6 8	7 6	8 4	9 2	10 0	10 10	11 8	12 6
11	5 6	6 5	7 4	8 3	9 2	10 1	11 0	11 11	12 10	13 9
12	6 0	7 0	8 0	9 0	10 0	11 0	12 0	13 0	14 0	15 0
13	6 6	7 7	8 8	9 9	10 10	11 11	12 0	14 1	15 2	16 3
14	7 0	8 2	9 4	10 6	11 8	12 10	14 0	15 2	16 4	17 6
15	7 6	8 9	10 0	11 3	12 6	13 9	15 0	16 3	17 6	18 9
16	8 0	9 4	10 8	12 0	13 4	14 8	16 0	17 4	18 8	20 0
17	8 6	9 11	11 4	12 9	14 2	15 7	17 0	18 5	19 10	21 3
18	9 0	10 6	12 8	13 6	15 0	16 6	18 0	19 6	21 0	22 6
19	9 6	11 1	12 8	14 3	15 10	17 5	19 0	20 7	22 2	23 9
20	10 0	11 8	13 4	15 0	16 8	18 4	20 0	21 8	23 4	25 0

BOARDS AND PLANK.

Inches Wide.

Length in Feet.	16		17		18		19		20		21		22		23		24	
	Feet,	Inches,	Feet,	Inches,	Feet,	Inches,	Feet,	Inches,	Feet,	Inches,	Feet,	Inches,	Feet,	Inches,	Feet,	Inches,	Feet,	Inches,
10	13	4	14	2	15	0	15	10	16	8	17	6	18	4	19	2	20	0
11	14	8	15	7	16	6	17	5	18	4	19	3	20	2	21	1	22	0
12	16	0	17	0	18	0	19	0	20	0	21	0	22	0	23	0	24	0
13	17	4	18	5	19	6	20	7	21	8	22	9	23	10	24	11	26	0
14	18	8	19	10	21	0	22	2	23	4	24	6	25	8	26	10	28	0
15	20	0	21	3	22	6	23	9	25	0	26	3	27	6	28	9	30	0
16	21	4	22	8	24	0	25	4	26	8	28	0	29	4	30	8	32	0
17	22	8	24	1	25	6	26	11	28	4	29	9	31	2	32	7	34	0
18	24	0	25	6	27	0	28	6	30	0	31	6	33	0	34	6	36	0
19	25	4	26	11	28	6	30	1	31	8	33	3	34	10	36	5	38	0
20	26	8	28	4	30	0	31	8	33	4	35	0	36	8	38	4	40	0

1 2 3 4 5 6 7 8 9 10 11 12 13 14 15 16 17 18 19 20 21 22 23 24 25 26 27 28 29 30 31 32 33 34 35 36 37 38 39 40 41 42 43 44 45 46 47 48 49 50

BOARDS AND PLANK.—Inches Wide.

12	13	14	15	16	17	18	19	20
38	0 41	4 44	6 47	8 50	10 53	12 57	14 60	16 63
39	0 42	6 45	9 48	0 52	3 55	6 58	9 61	12 65
40	0 43	8 46	0 50	4 53	8 56	0 60	4 63	8 66
41	0 44	10 47	3 51	8 54	1 58	6 61	11 64	4 68
42	0 45	6 49	6 52	0 56	6 60	0 63	6 66	0 70
43	0 46	7 50	9 53	4 57	11 60	6 63	8 68	1 71
44	0 47	8 51	5 55	8 58	0 62	9 66	1 69	4 73
45	0 48	9 52	6 56	0 59	9 63	0 67	3 71	8 75
46	0 49	10 53	8 57	4 61	2 65	9 69	10 72	0 76
47	0 50	11 54	10 58	6 62	7 70	0 74	5 78	4 80
48	0 52	0 56	0 60	0 64	0 68	0 72	0 76	0 80
49	0 53	1 57	3 61	4 65	5 69	6 73	7 77	8 81
50	0 54	2 58	4 62	8 66	10 70	0 75	2 79	4 83
51	0 55	3 59	6 63	0 68	3 72	6 76	9 80	0 85
52	0 56	4 60	8 65	4 69	8 73	0 78	4 82	8 86
53	0 57	5 61	10 66	8 70	1 75	9 79	11 83	4 88
54	0 58	6 63	6 67	0 72	6 76	0 81	6 85	0 90
55	0 59	7 64	9 68	4 73	11 77	6 82	8 87	0 91

TABLE
OF
WAGES AND BOARD.

The column on the left shows the number of days; the caption the rate per month. To find the amount of 16 days works, \$10 per month, you trace the number of days to 16; follow the line until it is under \$10, the rate per month, and you find \$6,16, omitting the lesser fractions. That for Board in the same way. The wages are cast at 26 working days to the month, and the week's board at 6 days.

TABLE OF WAGES AT GIVEN RATES PER MONTH.

Rate per month of 26 days.

Part & Days.	\$8	\$9	\$10	\$11	\$12	\$13	\$14	\$15
1/4	0 8	0 9	0 10	0 11	0 12	0 13	0 14	0 14
1/2	0 15	0 17	0 19	0 21	0 23	0 25	0 27	0 29
3/4	0 23	0 26	0 29	0 32	0 35	0 38	0 40	0 43
1	0 31	0 35	0 38	0 42	0 46	0 50	0 54	0 58
2	0 62	0 69	0 77	0 85	0 92	1 0	1 8	1 15
3	0 92	1 4	1 15	1 27	1 38	1 50	1 62	1 73
4	1 23	1 38	1 54	1 69	1 85	2 0	2 15	2 31
5	1 54	1 73	1 92	2 12	2 31	2 50	2 69	2 88
6	1 85	2 8	2 31	2 54	2 77	3 0	3 23	3 46
7	2 15	2 42	2 69	2 96	3 23	3 50	3 77	4 4
8	2 46	2 77	3 8	3 38	3 69	4 0	4 31	4 62
9	2 77	3 12	3 46	3 81	4 15	4 50	4 85	5 19
10	3 8	3 46	3 85	4 23	4 62	5 0	5 38	5 77
11	3 38	3 81	4 23	4 65	5 8	5 50	5 92	6 35

TABLE OF WAGES AT GIVEN RATES PER MONTH.

No. of Days.	Rate per month of 26 days.														
	\$8	\$9	\$10	\$11	\$12	\$13	\$14	\$15	\$16	\$17	\$18	\$19	\$20	\$21	\$22
12	3 69	4 15	4 62	5 8	5 54	6 0	6 46	6 92	7 38	7 84	8 30	8 76	9 22	9 68	10 14
13	4 0	4 50	5 0	5 50	6 0	6 50	7 0	7 50	8 0	8 50	9 0	9 50	10 0	10 50	11 0
14	4 31	4 85	5 38	5 92	6 46	7 0	7 54	8 08	8 62	9 16	9 70	10 24	10 78	11 32	11 86
15	4 62	5 19	5 77	6 35	6 92	7 50	8 08	8 65	9 23	9 80	10 38	10 96	11 54	12 12	12 69
16	4 92	5 54	6 16	6 77	7 38	8 0	8 62	9 23	9 84	10 45	11 06	11 67	12 28	12 89	13 50
17	5 23	5 88	6 54	7 19	7 85	8 50	9 15	9 80	10 45	11 10	11 75	12 40	13 05	13 70	14 35
18	5 54	6 23	6 92	7 62	8 31	9 0	9 69	10 38	11 07	11 76	12 45	13 14	13 83	14 52	15 21
19	5 85	6 58	7 31	8 4	8 77	9 50	10 23	10 96	11 69	12 42	13 15	13 88	14 61	15 34	16 07
20	6 15	6 92	7 69	8 46	9 23	10 0	10 77	11 54	12 31	13 08	13 85	14 62	15 39	16 16	16 93
21	6 46	7 27	8 8	9 88	10 69	11 50	12 31	13 12	13 93	14 74	15 55	16 36	17 17	17 98	18 79
22	6 77	7 62	8 46	9 31	10 15	11 0	11 85	12 69	13 54	14 38	15 23	16 07	16 92	17 76	18 61
23	7 8	8 96	9 85	10 73	11 62	12 50	13 38	14 27	15 15	16 04	16 92	17 81	18 70	19 59	20 48
24	7 38	8 31	9 23	10 15	11 8	12 50	13 46	14 42	15 28	16 14	17 00	17 86	18 72	19 58	20 44
25	7 69	8 65	9 62	10 58	11 54	12 50	13 46	14 42	15 38	16 34	17 30	18 26	19 22	20 18	21 14
26	8	9 0	10 0	11 0	12 0	13 0	14 0	15 0	16 0	17 0	18 0	19 0	20 0	21 0	22 0

TABLE OF WAGES AND BOARD PER MONTH AND WEEK.

Part & Days.	Rate per month of 26 days.											Board per Week, 6 days.		
	\$16	\$17	\$18	\$19	\$20	\$21	10s.	11s.	0	5	6	0	5	6
1/4	0 15	0 16	0 17	0 18	0 19	0 20	0 20	0 20	0 20	0 20	0 20	0 0	0 5	0 6
1/2	0 31	0 32	0 34	0 36	0 38	0 40	0 40	0 40	0 40	0 40	0 40	0 0	0 10	0 11
3/4	0 46	0 49	0 51	0 55	0 58	0 61	0 61	0 61	0 61	0 61	0 61	0 0	0 16	0 17
1	0 62	0 66	0 69	0 73	0 77	0 81	0 81	0 81	0 81	0 81	0 81	0 0	0 21	0 23
2	1 23	1 31	1 38	1 46	1 54	1 62	1 62	1 62	1 62	1 62	1 62	0 0	0 42	0 46
3	1 85	1 96	2 08	2 19	2 31	2 42	2 42	2 42	2 42	2 42	2 42	0 0	0 63	0 69
4	2 46	2 62	2 77	2 92	3 08	3 23	3 23	3 23	3 23	3 23	3 23	0 0	0 83	0 92
5	3 08	3 27	3 46	3 65	3 85	4 04	4 04	4 04	4 04	4 04	4 04	0 1	1 04	1 15
6	3 69	3 92	4 15	4 38	4 62	4 85	4 85	4 85	4 85	4 85	4 85	1 1	2 25	1 38
7	4 31	4 58	4 85	5 12	5 38	5 65	5 65	5 65	5 65	5 65	5 65	1 1	4 46	1 60
8	4 92	5 23	5 54	5 85	6 16	6 46	6 46	6 46	6 46	6 46	6 46	1 1	6 67	1 83
9	5 54	5 88	6 23	6 58	6 92	7 27	7 27	7 27	7 27	7 27	7 27	1 1	8 88	2 06
10	6 15	6 54	6 92	7 31	7 69	8 08	8 08	8 08	8 08	8 08	8 08	2 2	10 29	2 26
11	6 77	7 19	7 62	8 04	8 46	8 88	8 88	8 88	8 88	8 88	8 88	2 2	12 29	2 52
12	7 38	7 85	8 31	8 77	9 23	9 69	9 69	9 69	9 69	9 69	9 69	2 2	14 50	2 75

TABLE OF WAGES PER MONTH AND BOARD PER WEEK.

No. of Days.	Rate per month of 26 days.											Board per Week, 6 days.		
	\$16	\$17	\$18	\$19	\$20	\$21	Da.	13s.	14s.					
13	8 0	8 50	9 0	9 50	10 0	10 50	1	0 26	0 29					
14	8 62	9 15	9 69	10 23	10 77	11 31	2	0 54	0 58					
15	9 23	9 81	10 38	10 96	11 54	12 12	3	0 81	0 88					
16	9 85	10 46	11 8	11 69	12 31	12 92	4	1 8	1 17					
17	10 46	11 12	11 77	12 42	13 08	13 73	5	1 35	1 46					
18	11 8	11 77	12 46	13 15	13 85	14 54	6	1 63	1 75					
19	11 69	12 42	13 15	13 88	14 62	15 35	7	1 90	2 4					
20	12 31	13 8	13 85	14 62	15 38	16 15	8	2 17	2 33					
21	12 92	13 73	14 54	15 35	16 16	16 96	9	2 44	2 63					
22	13 54	14 38	15 23	16 8	16 92	17 77	10	2 71	2 92					
23	14 15	15 4	15 92	16 81	17 69	18 58	11	2 98	3 21					
24	14 77	15 69	16 62	17 54	18 46	19 38	12	3 25	3 50					
25	15 38	16 35	17 31	18 27	19 23	20 19	13	3 52	3 79					
26	16 0	17 0	18 0	19 0	20 0	21 0	14	3 79	4 8					
27	16 62	17 65	18 69	19 73	20 77	21 81	15	4 6	4 38					
28	17 23	18 31	19 38	20 46	21 54	22 62	16	4 33	4 67					

28 | 17 23 | 18 31 | 19 38 | 20 46 | 21 54 | 22 62 | 16 | 4 33 | 4 67

EXPLANATION
OF
TABLE OF DAYS.

On the left you have the month, from any day of which to compute the number of days to the same day in any other month — For example, you wish to know how many days there are from the 20 January to the 20 of August; by following the line of January, till you are under the month of August, gives you the number of days 212, and so for other months.

TABLE,
Showing the number of days from any day in one month, to the same day in
any other.

FROM	Jan.	Feb.	Mar.	Apr.	May.	June	July.	Aug.	Sept.	Oct.	Nov.	Dec.
January,	365	31	59	90	120	151	181	212	243	273	304	334
February,	334	365	28	59	89	120	150	181	212	242	273	303
March,	306	337	365	31	61	92	122	153	184	214	245	275
April,	275	306	334	365	30	61	91	122	153	183	214	244
May,	245	276	304	335	300	31	61	92	123	153	184	214
June,	214	245	273	304	334	365	30	61	92	122	153	183
July,	184	215	243	274	304	335	365	31	62	92	123	153
August,	153	184	212	243	273	304	334	365	31	61	92	122
September,	122	153	181	212	242	273	304	334	365	30	61	91
October,	92	123	151	282	211	243	273	304	335	365	31	61
November,	61	92	120	151	181	212	242	273	304	334	365	30
December,	31	62	90	121	151	182	212	243	274	304	335	365

31
 62
 90
 121
 151
 182
 212
 243
 274
 304
 335
 365
 30
 305
 309
 334
 304
 274
 243
 212
 182
 151
 121
 90
 62
 31
 December,

EXPLANATION

OF

STONE WALL TABLE.

FIND the length in the left, and the thickness in the right hand column; then follow down the column under the height, until you come to the line opposite the length and thicknes, and you have the amount of feet required; then by adding or subtracting, you have the amount of any length, height, or thickness desired. Inches under six in the whole amount, not mentioned — over six, called a foot.

STONE WALL MEASURE.

Length	Height in Feet.										Thickness.
	1	2	3	4	5	6	7	8	9	10	
1	1	2	3	4	5	6	7	8	9	10	12
2	2	4	6	9	11	13	15	17	20	22	13
3	4	7	10	14	17	21	24	28	32	35	14
4	5	10	15	20	25	30	35	40	45	50	15
5	7	13	20	27	33	40	47	53	60	67	16
6	8	17	26	34	42	51	60	68	77	85	17
7	10	21	32	42	52	63	73	84	94	105	18
8	13	25	38	51	63	76	89	101	114	127	19
9	15	30	45	60	75	90	105	120	135	152	20
10	17	35	52	70	87	105	122	140	157	175	21
11	20	40	60	81	101	121	141	161	181	202	22
12	23	46	69	92	115	138	161	184	207	230	23
13	26	52	78	104	130	156	182	208	234	260	24

TABLE

For Calculating the Solid Contents of Cisterns.

Depth of Cistern in Feet & inches.		Longest Head in Feet & inches.		Smallest Head in Feet & Inches.		Wine Gallons and Parts of Gallons.
Ft.	In.	Ft.	In.	Ft.	In.	
5	00	4	06	4	00	555.25
5	02	4	08	4	02	590.
5	04	4	10	4	04	665.2
5	06	5	00	4	06	725.1
5	08	5	02	4	08	810.2
5	10	5	04	4	10	890.
6	00	5	06	5	00	977.2
6	02	5	08	5	02	1080.
6	04	5	10	5	04	1175.
6	06	6	00	5	06	1285.2
6	08	6	02	5	08	1387.1
6	10	6	06	5	10	1548.2
7	00	6	10	6	00	1742.
7	03	7	00	6	02	1892.1
7	06	7	00	6	04	1927.2
7	09	7	03	6	06	2143.3
8	00	7	06	6	08	2345.1
8	06	7	07	6	10	2622.

22	23	24
202	230	260
181	207	234
161	184	208
141	161	182
121	138	156
101	115	130
81	92	104
61	69	78
46	52	
23	26	
12	13	

Miscellaneous Tables.

20 units	make 1 score.
5 score	1 hundred.
12 units	1 dozen.
12 doz. = 144	1 gross.
12 gross = 144 doz.	1 great gross.
200 lbs. of beef, } pork, or fish, }	1 barrel.
196 lbs. of flour	1 barrel.
8 bushels of salt	1 hogshead.
280 lbs. of salt at the salt works in New York }	1 barrel.
100 lbs. of raisins	1 cask.
100 lbs. of fish	1 quintal.
100 lbs.	1 hundred.
18 inches	1 cubit.
22 inches, nearly,	1 sacred cubit.
1 gallon of train oil	7½ lbs.
1 gallon of molasses	11 lbs.
24 sheets of paper	1 quire.
20 quires	1 ream.
2 reams	1 bundle.
5 bundles	1 bale.

Troy Weight.

24 grains =	1 pennyweight.
20 pennyweights =	1 ounce.
12 ounces =	1 pound.

Apothecaries Weight.

20 grains =	1 scruple.
3 scruples =	1 dram.
8 drams =	1 ounce.
12 ounces =	1 pound.

Avoirdupois Weight.

16 drams =	1 ounce.
16 ounces =	1 pound.
2000 pounds =	1 ton.

32 lbs. of oats =	1 bushel.
46 lbs. of barley	do.
56 lbs. of corn, rye, or flax seed	do.
60 lbs. of wheat, or clover seed	do.

Circular Measure.

60 degrees =	a sextant.
90 degrees =	a quadrant.
90 degrees =	a right-angle.
180 degrees =	a semi-circle.

SPECIFIC DUTIES.

In the custom-house weight and gauge of goods, certain deductions are made for the box, bag, cask, &c., containing the goods, and also for leakage, breakage, &c. These deductions must be made before the specific duties are imposed.

Gross weight is the weight of the goods together with the box, bale, bag, cask, &c., which contains them.

Draft is an allowance made for waste, which is to be deducted from the gross weight, and is as follows :

On	112 lbs.		1 lb.
Above	112 lbs., and not exceeding 224 lbs.,		2 lbs.
"	224 lbs.,	" "	336 lbs., 3 lbs.
"	336 lbs.,	" "	1120 lbs., 4 lbs.
"	1120 lbs.,	" "	2016 lbs., 7 lbs.
"	2016 lbs.,		9 lbs.

Tare is an allowance for the weight, of the box, bag, cask, &c. It is to be deducted

from the remainder of any weight or measure, after the draft or tret has been allowed.

Leakage is an allowance of 2 per cent. on all liquors in casks, paying duty by the gallon.

Breakage is an allowance of 10 per cent. on ale, beer, and porter in bottles, and of 5 per cent. on all other liquors in bottles; or the importer may have the bottles counted, and pay duties on the number remaining unbroken.

Net weight is the weight of the goods after deducting the weight of the box, bale, &c., and making all other allowances.

re of
the
and
de-
ecific

oods
&c.,

hich
and

1 lb.
2 lbs.
3 lbs.
4 lbs.
7 lbs.
9 lbs.

the
cted

Value of Gold Coins.

According to the Laws passed by Congress, May
and June, 1834.

NAMES OF COINS	d. c. m.
UNITED STATES.	
Eagle, coined before July 31, 1834,	10 66 5
Shares in proportion.	
<i>FOREIGN GOLD.</i>	
AUSTRIAN DOMINIONS.	
Sovereign,	3 37 7
Double Ducat,	4 58 9
Hungarian, do.,	2 29 6
BAVARIA.	
Carolín,	4 95 7
Max d'or, or Maximilian,	3 31 8
Ducat,	2 27 5
BERNE.	
Ducat, double in proportion,	1 98 6
Pistole,	4 54 2
BRAZIL.	
Johannes, $\frac{1}{2}$ in proportion,	17 6 4
Dobraon,	32 70 6
Dobra,	17 30 1
Moidore, $\frac{1}{2}$ in proportion,	6 55 7
Crusade,	63 5

NAMES OF COINS.	d. c. m.
BRUNSWICK.	
Pistole, double in proportion,	4 54 8
Ducat,	2 23 0
COLOGNE.	
Ducat,	2 26 7
COLOMBIA.	
Doubloons,	15 53 5
DENMARK.	
Ducat, Current,	1 81 2
Ducat, Specie,	2 26 7
Christian d'or,	4 02 1
EAST INDIES.	
Rupee, Bombay, 1818,	7 09 6
Rupee, Madras, 1818,	7 11 0
Pagoda, Star,	1 79 8
ENGLAND.	
Guinea, half in proportion,	5 07 5
Sovereign, do.,	4 84 6
Seven Shilling piece,	1 69 8
FRANCE.	
Double Louis, coined before 1786,	9 69 7
Louis, do.,	4 84 6
Double Louis, coined since 1786,	9 15 3
Louis, do. do.,	4 57 6
Double Napoleon, or 40 francs,	7 70 2
Napoleon, or 20 do.,	3 85 1

NAMES OF COINS.	d. c. m.
FRANKFORT ON THE MAIN.	
Ducat,	2 27 9
GENEVA.	
Pistole, old,	3 98 5
Pistole, new,	3 44 4
GENOA.	
Sequin,	2 30 2
HAMBURGH.	
Ducat, double in proportion.	2 27 9
HANOVER.	
Double George d'or, single in proportion,	7 87 9
Ducat,	2 29 6
Gold Florin, double in proportion,	1 67 0
HOLLAND.	
Double Ryder,	12 20 5
Ryder,	6 04 3
Ducat,	2 27 5
Ten Guilder piece, 5 do. in proportion,	4 03 4
MALTA.	
Double Louis,	9 27 8
Louis,	4 85 2
Demi Louis,	2 33 6
MEXICO.	
Doubloons, shares in proportion,	15 53 5

NAMES OF COINS.	d. c. m.
MILAN.	
Sequin,	2 29 0
Doppia, or Pistole,	3 80 7
Forty Livre Piece, 1808,	7 74 2
NAPLES.	
Six Ducat Piece, 1783,	5 24 9
Two do., or Sequin, 1762,	1 59 1
Three do., or Oncetta, 1818,	2 49 0
NETHERLANDS.	
Gold Lion, or Fourteen Florin Piece,	5 04 6
Ten Florin Piece, 1820,	4 01 9
PARMA.	
Quadruple Pistole, double in propor- tion,	16 62 8
Pistole or Doppia, 1787,	4 19 4
do. do., 1796,	4 13 5
Maria Theresa, 1818,	3 86 1
PIERMONT.	
Pistole, coined since 1785, half in proportion,	5 41 1
Sequin, half in proportion,	2 28 0
Carlino, coined since 1785, half in proportion,	27 34 0
Piece of 20 francs, called Marengo,	3 56 4

NAMES OF COINS.	d. c. m.
POLAND.	
Ducat,	2 27 5
PORTUGAL.	
Dobraon,	32 70 6
Dobra,	17 30 1
Johannes,	17 06 4
Moidore, half in proportion,	6 55 7
Piece of 16 Testoons, or 1600	
Rees,	2 12 1
Old Crusado, of 400 Rees,	85 5
New do., 480 do.,	63 5
Milree, coined in 1775,	78 0
PRUSSIA.	
Ducat, 1748,	2 27 9
do., 1787	2 26 7
Frederick, double, 1769,	7 95 5
do. do., 1800,	7 95 1
do. single, 1778,	3 99 7
do. do., 1800,	3 97 5
ROME.	
Sequin, coined since 1760,	2 25 1
Scudo of Republic,	15 81 1
RUSSIA.	
Ducat, 1796,	2 29 7
do., 1763,	2 26 7
Gold Ruble, 1756,	96 7

NAMES OF COINS.	d. c. m.
RUSSIA.	
Gold Ruble, 1799,	73 7
do. Poltin, 1777,	35 5
Imperial, 1801,	7 82 9
Half do., 1801,	3 93 3
SARDINIA.	
Carlino, half in proportion,	9 47 2
SAXONY.	
Ducat, 1784,	2 26 7
do., 1797,	2 27 9
Augustus, 1754,	3 92 5
do., 1784,	3 97 4
SICILY.	
Ounce, 1751,	2 50 4
Double do., 1758,	5 04 4
SPAIN.	
Doubloon, 1772, double and single, and shares in proportion,	16 02 8
Doubloon,	15 53 5
Pistole,	3 88 4
Coronilla, Gold Dollar, or Vintern, 1801	98 3
SWEDEN.	
Ducat,	2 23 5
SWITZERLAND.	
Pistole of Helvetic Republic, 1800,	4 56 0

NAMES OF COINS.	d. c. m.
TREVES.	
Ducat,	2 26 7
TURKEY.	
Sequin Fonducili, of Constanti- nople, 1773,	1 86 8
do., 1789,	1 84 8
Half Misseir, 1818,	52 1
Sequin Fonducili,	1 83 0
Yeermeeblekblek,	3 02 8
TUSCANY.	
Zechino, or Sequin,	2 31 8
Ruspone of the kingdom of Etruria,	6 93 8
VENICE.	
Zechino, or Sequin, shares in proportion,	2 31 0
WIRTEMBURG.	
Carolin,	4 89 8
Ducat,	2 23 5
ZURICH.	
Ducat, double and half in pro- portion,	2 26 7

TABLE,

Showing the present worth of \$1, or £1, from 1 year to 40, allowing compound discount, at 5 and 6 per cent.

Yrs.	5 per cent.	6 per cent.	Yrs.	5 per cent.	6 per cent.
1	.952381	.943396	21	.358942	.294155
2	.907029	.889996	22	.341850	.277505
3	.863838	.839619	23	.325571	.261797
4	.822702	.792094	24	.310068	.246979
5	.783526	.747258	25	.295303	.232999
6	.746215	.704961	26	.281241	.219810
7	.710681	.665057	27	.267848	.207368
8	.676839	.627412	28	.255094	.195630
9	.644609	.591898	29	.242946	.184557
10	.613913	.558395	30	.231377	.174110
11	.584679	.526788	31	.220359	.164255
12	.556837	.496969	32	.209866	.154957
13	.530321	.468839	33	.199873	.146186
14	.505068	.442301	34	.190355	.137912
15	.481017	.417265	35	.181290	.130105
16	.458112	.393646	36	.172657	.122741
17	.436297	.371364	37	.164436	.115793
18	.415521	.350344	38	.156605	.109239
19	.395734	.330513	39	.149148	.103056
20	.376889	.311805	40	.142046	.097222

EXPLANATION
OF
INTEREST TABLES.

FIND the amount in the left hand column, then follow the line of figures until you come to the column giving the number of days at the head, and you have the amount of days to one month; then, by adding together, you have the interest of as many months as required, on amounts from one dollar to one hundred.

100
2
2
3
3
5
5
6
6
8
8
9
9
10
10
12
12
13
13
15
15
17
17
19
19
21
21
23
23
25
25
27
27
29
29
30
33
33
35
35
36
36
38
38
40
40
42
42
44
44
46
46
48
48
50
50
52
52
54
54
56
56
58
58
59
59
60
60
61
61
63
63
64
64
66
66
68
68
70
70
72
72
74
74
76
76
78
78
80
80
82
82
84
84
86
86
88
88
90
90

