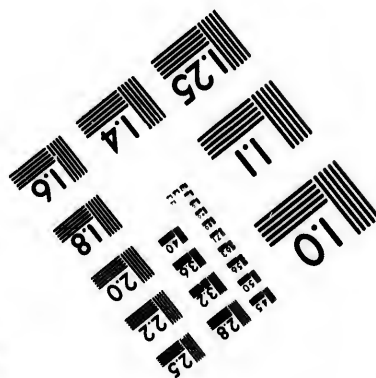
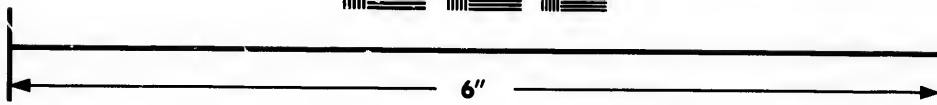
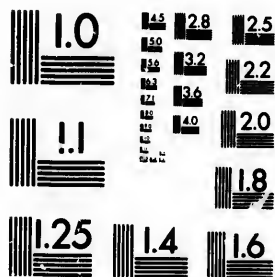


**IMAGE EVALUATION
TEST TARGET (MT-3)**



**Photographic
Sciences
Corporation**

23 WEST MAIN STREET
WEBSTER, N. Y. 14580
(716) 872-0303



Technical and Bibliographic Notes/Notes techniques et bibliographiques

The Institute has attempted to obtain the best original copy available for filming. Features of this copy which may be bibliographically unique, which may alter any of the images in the reproduction, or which may significantly change the usual method of filming, are checked below.

L'Institut a microfilmé le meilleur exemplaire qu'il lui a été possible de se procurer. Les détails de cet exemplaire qui sont peut-être uniques du point de vue bibliographique, qui peuvent modifier une image reproduite, ou qui peuvent exiger une modification dans la méthode normale de filmage sont indiqués ci-dessous.

- Coloured covers/
Couverture de couleur
- Covers damaged/
Couvertures endommagées
- Covers restored and/or laminated/
Couverture restaurée et/ou pelliculée
- Cover title missing/
Le titre de couverture manque
- Coloured maps/
Cartes géographiques en couleur
- Coloured ink (i.e. other than blue or black)/
Encre de couleur (i.e. autre que bleue ou noire)
- Coloured plates and/or illustrations/
Planches et/ou illustrations en couleur
- Bound with other material/
Relié avec d'autres documents
- Tight binding may cause shadows or distortion along interior margin/
La reliure serrée peut causer de l'ombre ou de la distorsion le long de la marge intérieure
- Blank leaves added during restoration may appear within the text. Whenever possible, these have been omitted from filming/
Il se peut que certaines pages blanches ajoutées lors d'une restauration apparaissent dans le texte, mais, lorsque cela était possible, ces pages n'ont pas été filmées.
- Additional comments:
Commentaires supplémentaires:

- Coloured pages/
Pages de couleur
- Pages damaged/
Pages endommagées
- Pages restored and/or laminated/
Pages restaurées et/ou pelliculées
- Pages discoloured, stained or foxed/
Pages décolorées, tachetées ou piquées
- Pages detached/
Pages détachées
- Showthrough/
Transparence
- Quality of print varies/
Qualité inégale de l'impression
- Includes supplementary material/
Comprend du matériel supplémentaire
- Only edition available/
Seule édition disponible
- Pages wholly or partially obscured by errata slips, tissues, etc., have been refilmed to ensure the best possible image/
Les pages totalement ou partiellement obscurcies par un feuillet d'errata, une pelure, etc., ont été filmées à nouveau de façon à obtenir la meilleure image possible.

This item is filmed at the reduction ratio checked below/
Ce document est filmé au taux de réduction indiqué ci-dessous.

10X	12X	14X	16X	18X	20X	22X	24X	26X	28X	30X	32X
<input type="checkbox"/>	<input type="checkbox"/>	<input type="checkbox"/>	<input type="checkbox"/>	<input type="checkbox"/>	<input type="checkbox"/>	<input type="checkbox"/>	<input type="checkbox"/>	<input checked="" type="checkbox"/>	<input type="checkbox"/>	<input type="checkbox"/>	<input type="checkbox"/>

The copy filmed here has been reproduced thanks to the generosity of:

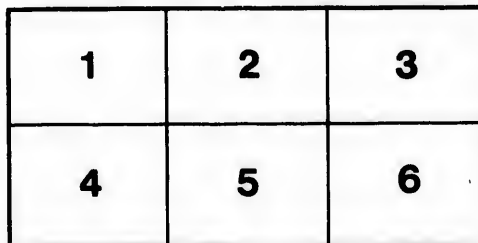
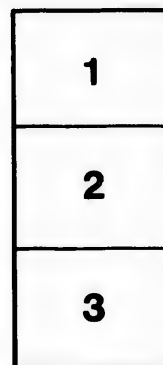
Library of the Public
Archives of Canada

The images appearing here are the best quality possible considering the condition and legibility of the original copy and in keeping with the filming contract specifications.

Original copies in printed paper covers are filmed beginning with the front cover and ending on the last page with a printed or illustrated impression, or the back cover when appropriate. All other original copies are filmed beginning on the first page with a printed or illustrated impression, and ending on the last page with a printed or illustrated impression.

The last recorded frame on each microfiche shall contain the symbol \rightarrow (meaning "CONTINUED"), or the symbol ∇ (meaning "END"), whichever applies.

Maps, plates, charts, etc., may be filmed at different reduction ratios. Those too large to be entirely included in one exposure are filmed beginning in the upper left hand corner, left to right and top to bottom, as many frames as required. The following diagrams illustrate the method:



L'exemplaire filmé fut reproduit grâce à la générosité de:

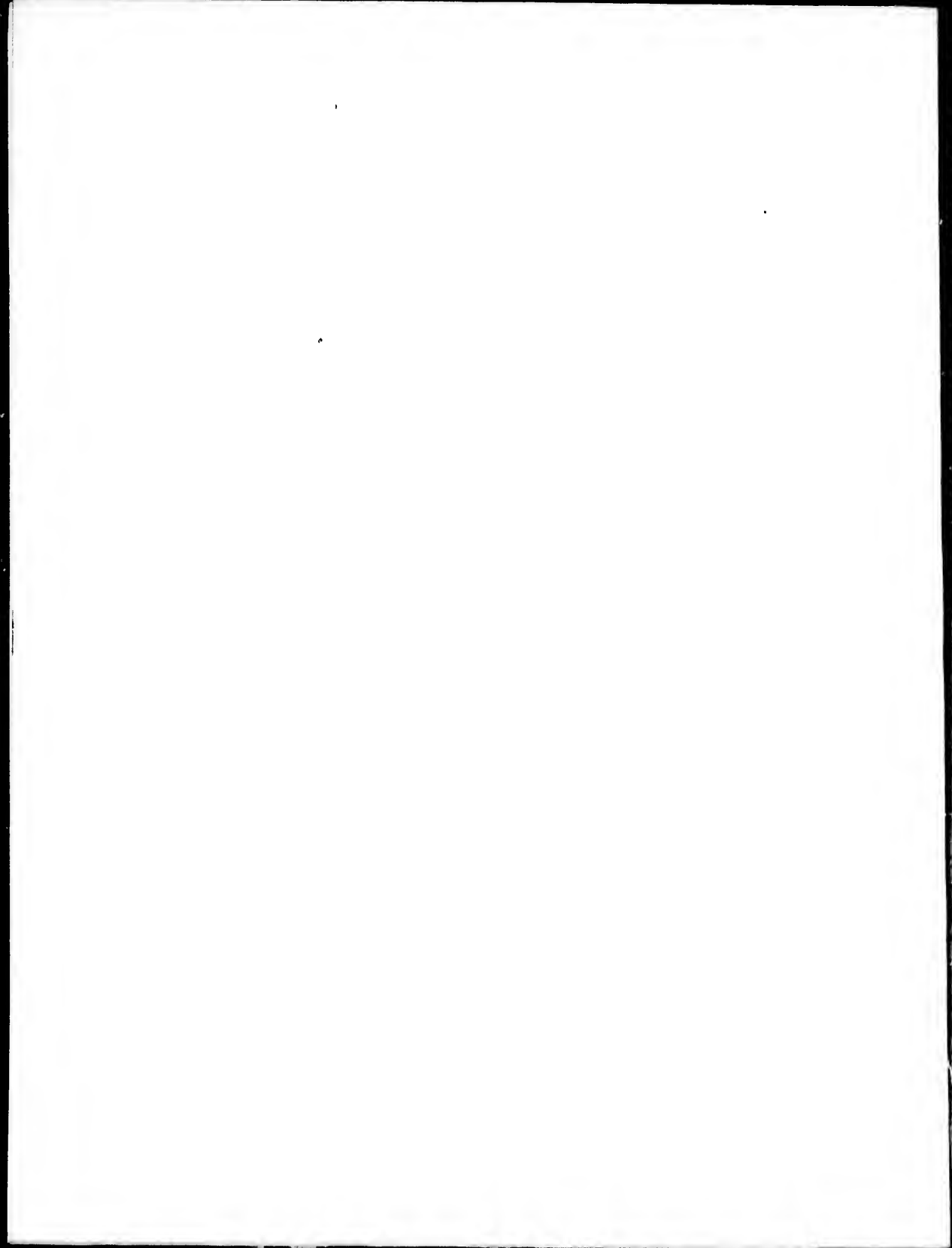
La bibliothèque des Archives
publiques du Canada

Les images suivantes ont été reproduites avec le plus grand soin, compte tenu de la condition et de la netteté de l'exemplaire filmé, et en conformité avec les conditions du contrat de filmage.

Les exemplaires originaux dont la couverture en papier est imprimée sont filmés en commençant par le premier plat et en terminant soit par la dernière page qui comporte une empreinte d'impression ou d'illustration, soit par le second plat, selon le cas. Tous les autres exemplaires originaux sont filmés en commençant par la première page qui comporte une empreinte d'impression ou d'illustration et en terminant par la dernière page qui comporte une telle empreinte.

Un des symboles suivants apparaîtra sur la dernière image de chaque microfiche, selon le cas: le symbole \rightarrow signifie "A SUIVRE", le symbole ∇ signifie "FIN".

Les cartes, planches, tableaux, etc., peuvent être filmés à des taux de réduction différents. Lorsque le document est trop grand pour être reproduit en un seul cliché, il est filmé à partir de l'angle supérieur gauche, de gauche à droite, et de haut en bas, en prenant le nombre d'images nécessaire. Les diagrammes suivants illustrent la méthode.



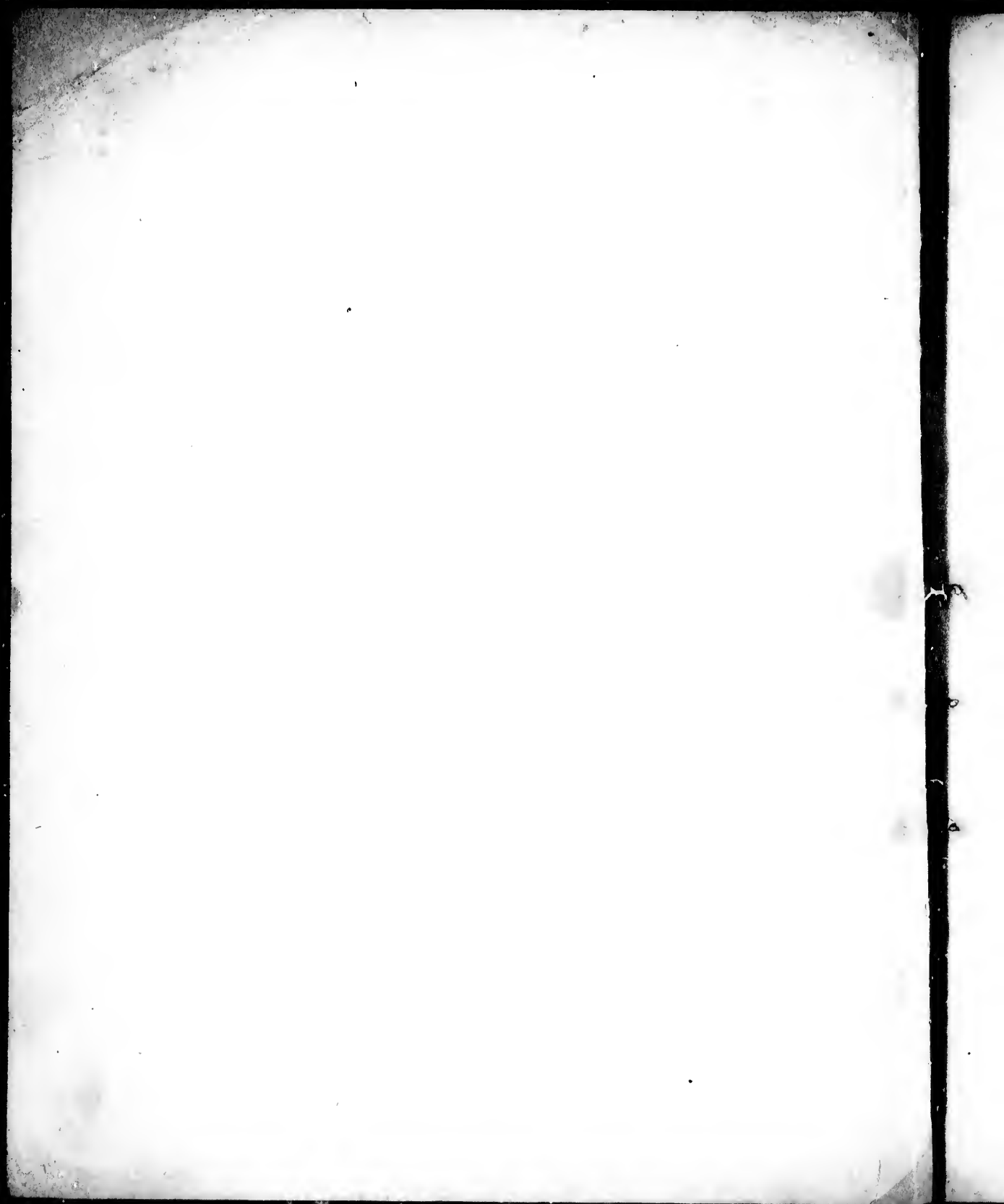
RESULT
OF
ASTRONOMICAL OBSERVATIONS,
MADE IN THE
INTERIOR PARTS
OF
NORTH AMERICA.

London:

PRINTED FOR A. ARROWSMITH, CHARLES STREET, SOHO SQUARE,

BY C. BUCKTON, GREAT PULTENEY STREET, GOLDEN SQUARE.

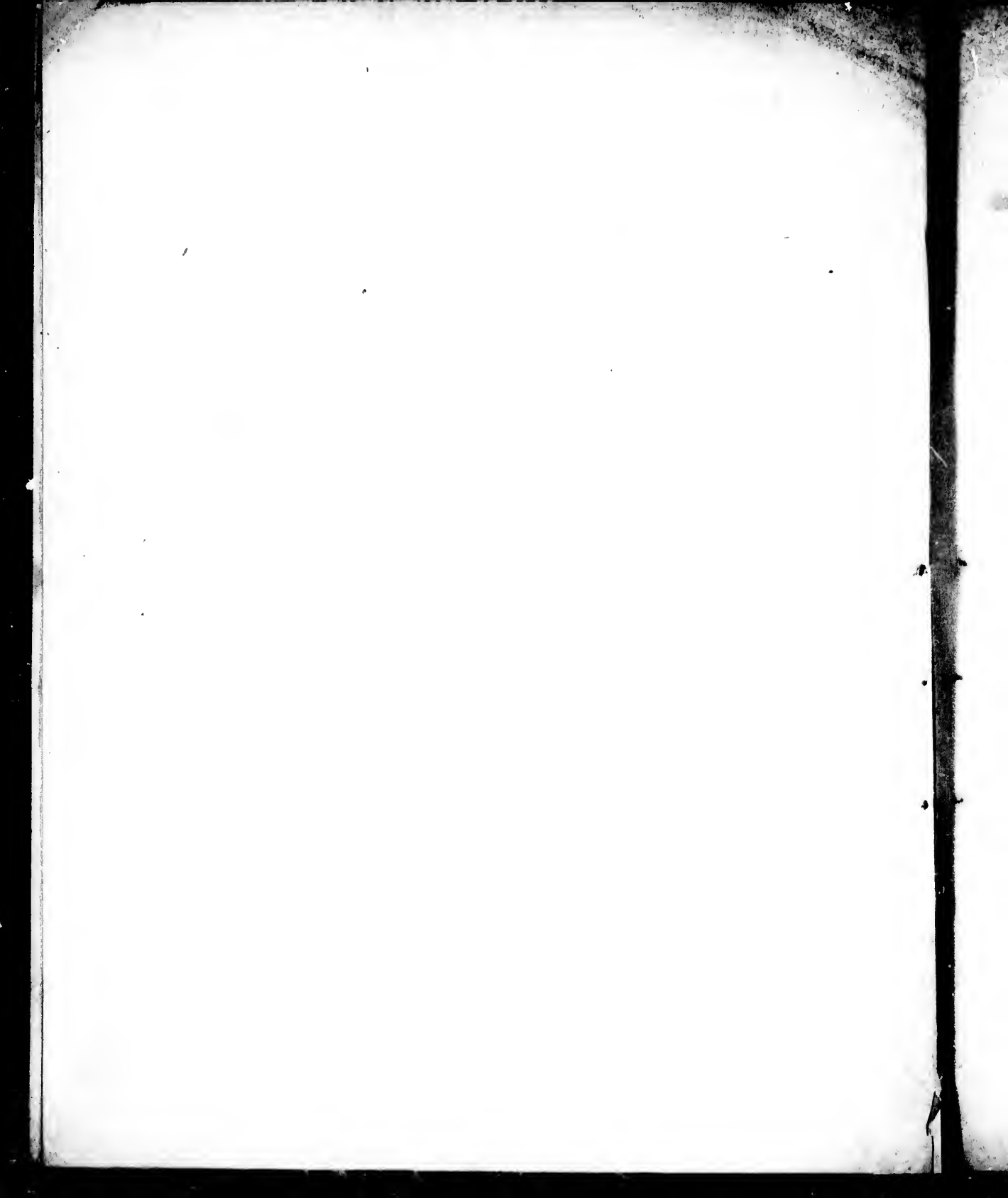
1794.



ADVERTISEMENT.

THE RESULT of ASTRONOMICAL OBSERVATIONS in the Interior Parts of North America, have chiefly been made at the Expence of The Honorable GOVERNOR and COMPANY of ADVENTURERS of ENGLAND, Trading into HUDSON'S BAY; and printed by Permission of the COMPANY; to which the Public stands indebted for the many Positions so accurately settled by Mr. PHILIP TURNOR* and Others in their Service; which has laid a permanent Foundation for the GEOGRAPHY in that Part of the Globe.

* TEACHER of NAVIGATION and the LUNAR OBSERVATIONS, Prospect Row,
Dock Head, Rotherhithe.



SLAVE LAKE. *By Mr. PHILIP TURNOR, in 1791.*

AT the WEST BRANCH of the SLAVE RIVER, which is S. $33^{\circ} 38'$ W. distance 11,73 miles from the CANADIAN SETTLEMENT.

Latitude by meridian altitude mean $61^{\circ} 16' 39''$ N.
 July 19th. 8 distances of Aquilæ and \mathcal{D} , the * E. Longitude from Greenwich 113 19 15 W.

At the CANADIAN SETTLEMENT 1791, SLAVE LAKE.

Latitude by 2 meridian altitudes mean $61^{\circ} 26' 25''$ N.
 Longitude W. from Greenwich, by 69 dist. of \odot and \mathcal{D} , the \odot E. in 7 sets, mean 112 50 04 W.

Aquilæ W. of \mathcal{D} , taken at the West Branch of the Slave River $113^{\circ} 19' 15''$ from which deduct $13' 36''$ of longitude for the easting, made between the two places of observation, will leave $113^{\circ} 5' 39''$, which will give for the mean longitude at the Canadian Settlement 112 57 50 W.

ATHAPESCOW LAKE, about 600 yards S. W. of FORT CHEPAWYAN, and about 7 miles E. N. E. $\frac{1}{2}$ E. from the East Branch of the ATHAPESCOW LAKE. *By Mr. PHILIP TURNOR, in the Year 1791 and 1792.*

Latitude by 6 meridian altitudes of the \odot 's lower limb, mean $58^{\circ} 37' 44''$ N.
 Longitude W. of Greenwich, by 50 dist. of \odot and \mathcal{D} , the \odot E. in 5 sets, $110^{\circ} 14' 33''$
 Longitude W. of Greenwich, by 100 dist. of \odot and \mathcal{D} , the \odot E. in 11 sets, 110 27 43

Mean 110 21 08

Long. W. of Greenwich, by 138 dist. of * and \mathcal{D} , the * E. in 14 sets, 110 24 14
 Long. W. of Greenwich, by 110 dist. of * and \mathcal{D} , the * W. in 11 sets, 110 34 22

Mean 110 29 18

Mean of the whole 110 25 13 W.

ATHAPESCOW LAKE, Mouth of STONY RIVER.

August 31, 1791. Latitude by meridian altitude of the \odot 's lower limb $59^{\circ} 16' 22''$ N.
 Mean longitude by 21 distances of the \odot and \mathcal{D} , the \odot E. in 3 sets, 105 26 00 W.

ISLE LA CROSS. *By Mr. PHILIP TURNOR, in 1790 and 1791.*

Latitude by 5 meridian altitudes of the \odot 's lower limb, mean $55^{\circ} 25' 43''$ N.
 Long. W. from Greenwich, by 78 dist. of \mathcal{D} and \odot , the \odot E. in 8 sets, 107 42 50
 Long. W. from Greenwich, by 206 dist. of \odot and \mathcal{D} , the \odot W. in 23 sets, 107 49 17

Mean 107 46 03

Long. W. from Greenwich, by 195 dist. of * and \mathcal{D} , the * E. in 23 sets, 107 43 37
 Long. W. from Greenwich, by 152 dist. of * and \mathcal{D} , the * W. in 18 sets, 107 52 57

107 48 17

Mean of the whole 107 47 10 W.

N. P. The meridian altitude is always to be understood the double meridian altitude.

HUDSON'S HOUSE. By Mr. PHILIP TURNOR, in 1779.

Latitude by 4 meridian altitudes, mean	53° 00' 32" N.
Longitude W. of Greenwich, by 32 dist. of ☉ and ☽, the ☉ W. mean 106° 35' 49"	
Longitude W. of Greenwich, by 12 dist. of ♀ and ☽, the ♀ E. mean 106 36 45	
Longitude W. of Greenwich, by 12 dist. of ♀ and ☽, the ♀ W. mean 106 01 00	
Mean of ♀ and ☽ 106 18 52	
Mean of the whole	106 27 20 W.

CUMBERLAND HOUSE. By Mr. PHILIP TURNOR, in 1778 and 1790.

Latitude by 14 meridian altitudes of the ☉'s lower limb, mean	53 56 41 N.
Long. W. of Greenwich, by 149 dist. of ☉ and ☽, the ☉ E. in 17 sets, 102° 17' 09"	
Long. W. of Greenwich, by 191 dist. of ☉ and ☽, the ☉ W. in 21 sets, 102 14 10	
Mean of ☉ and ☽ 102 15 39	
Long. W. of Greenwich, by 201 dist. of ♀ and ☽, the ♀ E. in 26 sets, 102 00 03	
Long. W. of Greenwich, by 112 dist. of ♀ and ☽, the ♀ W. in 16 sets, 102 22 49	
Mean of ♀ and ☽ 102 11 26	
Mean of the whole	102 13 32 W.

YORK FORT. By Mr. PHILIP TURNOR, in 1778 and 1779.

Latitude by 4 meridian altitudes of the ☉'s lower limb, mean	57 01 51 N.
Long. W. of Greenwich, by 46 dist. of ☉ and ☽, the ☉ E. in 5 sets, 92° 59' 12"	
Long. W. of Greenwich, by 20 dist. of ☉ and ☽, the ☉ W. in 3 sets, 91 58 00	
Mean of ☉ and ☽ 92 28 36	
Long. W. of Greenwich, by 7 dist. of ♀ and ☽, the ♀ E. 93 22 45	
Mean of the whole	92 46 40 W.

MOOSE FORT. By Mr. PHILIP TURNOR, in 1779, 1780, 1781 and 1782.

Latitude by 8 meridian altitudes of ☉'s lower limb, mean	51 15 54 N.	
Long. W. of Greenwich, by 105 dist. of ☉ and ☽, the ☉ E. in 10 sets, 81° 03' 42"		
Long. W. of Greenwich, by 75 dist. of ☉ and ☽, the ☉ W. in 8 sets, 80 52 32		
Mean by ☉ and ☽ 80 58 07	} Mean	
Long. W. of Greenwich, by 54 dist. of ♀ and ☽, the ♀ E. in 6 sets, 80 44 12		80 51 05 W.
Long. W. of Greenwich, by 40 dist. of ♀ and ☽, the ♀ W. in 5 sets, 80 43 57		
Mean by ♀ and ☽ 80 44 04		

Longitude W. of Greenwich by the Immersions of Jupiter's Satellites.

1781. March 26. I. Satellite <i>dubious</i> 81° 21' 45"	} Mean	81 01 07 W.
April 27. I. Satellite 80 54 45		
1782. Feb. 4. I. Satellite 80 57 00		
May 16. I. Satellite 80 49 30		
March 10. II. Satellite 81 06 30	} Mean of the whole	80 56 06 W.
Feb. 26. III. Satellite 81 03 15		
May 16. III. Satellite 80 56 15		

ALBANY FORT. *By Mr. PHILIP TURNOR, in 1780.*

Latitude by 5 meridian altitudes of the ☉'s lower limb, mean	52° 14' 40" N.
Long. W. from Greenwich, by 19 dist. of ☉ and ☽, the ☉ E. in 3 sets, 82° 15' 20"	
Long. W. from Greenwich, by 25 dist. of ☉ and ☽, the ☉ W. in 3 sets, 81 58 25	
Mean by ☉ and ☽	82 07 07
Jan. 21. Long. W. from Greenw. by Immer. of Jupiter's 1st. Satellite, 82 02 45	
Feb. 6. Long. W. from Greenw. by Immer. of Jupiter's 1st. Satellite, 82 06 30	
Mean by Immersions of Jupiter's 1st. Satellite	82 04 37
Long. W. from Gr. by 18 dist. of ☉ and *, the * W. in 3 sets, 81 48 10	
Mean of the whole	81 59 58 W.

HENLEY HOUSE. *By Mr. PHILIP TURNOR, in 1780.*

Latitude by 4 meridian altitudes of the ☉'s lower limb, mean	51 14 27 N.
Long. W. of Greenwich, by 46 dist. of ☉ and ☽, the ☉ W. in 5 sets, 85° 12' 05"	
Long. W. of Greenwich, by 18 dist. of * and ☽, the * E. in 2 sets, 84 56 37	
Long. W. of Greenwich, by 14 dist. of * and ☽, the * W. in 2 sets, 85 02 52	
Mean by * and ☽	84 59 44
Mean of the whole	85 05 54 W.

GLOUCESTER HOUSE. *By Mr. PHILIP TURNOR, in 1780.*

Latitude by 5 meridian altitudes of the ☉'s lower limb, mean	51 24 26 N.
Long. W. of Greenwich, by 36 dist. of ☉ and ☽, the ☉ E. in 4 sets, 87° 20' 19"	
Long. W. of Greenwich, by 6 dist. of * and ☽, the * E. in 1 set, 86 35 45	
Long. W. of Greenwich, by 6 dist. of * and ☽, the * W. in 1 set, 86 20 45	
Mean by * and ☽	86 28 15
July 11th Long. W. of Greenwich, by Emersion of Jupiter's 1st Satellite, 87 09 15	
Mean of the whole	86 59 16 W.

EAST MAIN HOUSE. *By Mr. PHILIP TURNOR, in 1781.*

Latitude by 3 meridian altitudes of the ☉'s lower limb, mean	52 15 00 N.
Long. W. of Greenwich, by ☉ and ☽, the ☉ E. 70° 11' 00"	
Long. W. of Greenwich, by ☽ and *, the * W. 78 13 00	
Mean of both	78 42 00 W.

BRUNSWICK HOUSE. *By Mr. PHILIP TURNOR, in 1781 and 1784.*

Latitude by 7 meridian altitudes of the ☉'s lower limb, mean	50° 13' 43" N.
Long. W. from Greenwich, by 15 dist. of ☉ and ☽, the ☉ E. in 2 sets, 82° 17' 15"	
Long. W. from Greenwich, by 58 dist. of ☉ and ☽, the ☉ W. in 6 sets, 82 21 55	
Mean by ☉ and ☽ 82 19 35	
Long. W. from Greenwich, by 21 dist. of ☽ and *, the * E. in 2 sets, 83 04 07	
Long. W. from Greenwich, by 20 dist. of ☽ and *, the * W. in 2 sets, 82 21 30	
Mean by ☽ and * 82 42 48	
Mean of the whole	82 31 11 W.

ABBITIBBE RIVER, *at the JUNCTION with the PUSQUACHAGAMAY RIVER.*
By Mr. PHILIP TURNOR, in 1784 and 1785.

Latitude by 3 meridian altitudes of the ☉'s lower limb, mean	49 19 12 N.
Longitude W. from Greenwich, by 5 sets of ☉ and ☽, the ☉ E. mean	81 43 24 W.

FREDERICK HOUSE. *By Mr. PHILIP TURNOR, in 1785, 1786 and 1787.*

Latitude by 3 meridian altitudes of the ☉'s lower limb, mean	48 34 35 N.
Longitude W. from Greenwich, by 6 sets of ☉ and ☽, the ☉ E. mean	82 06 07 W.

MISSINABE LAKE, *at the LATE SETTLEMENT.* *By Mr. PHILIP TURNOR, 1781.*

Latitude by 5 meridian altitudes of the ☉'s lower limb, mean	48 29 42
Longitude W. from Greenwich, by 20 dist. of ☽ and *, the * W. in 2 sets, mean	84 02 15 W.

Single Observation between CUMBERLAND HOUSE and the SLAVE LAKE.

By Mr. PHILIP TURNOR, in 1790 and 1791.

	LATITUDE.
Near the Sturgeon Weare-Fall	54° 18' 33"
Entrance of Beaver Lake	54 25 10
Near the Birch Carrying Place	54 50 23
Great Fall Carrying Place	55 22 33
Neekcak, or Otter Carrying Place	55 39 28
Devil's Carrying Place	55 40 14
Tickameg Lake	55 41 05
Entrance of Knee Lake Longitude 106° 38' 50"	55 50 56
At a Carrying Place of 450 yards nearly, N. of Isle la Cross	55 57 24
At another Carrying Place 360 yards to the westward of Isle la Cross	56 00 13
At a small Island on Isle la Cross Lake	55 40 00
On the West Coast of Buffalo Lake	55 54 35
Entrance of Swan Lake Longitude 109° 22' ½	
Three miles west of the above Point Longitude 109° 43' ½	56 18 15
Carrying Place between Swan Lake and another small Lake which is the Land's } height that divides the Waters }	56 15 21
At a Branch on the Red Willow River which comes from the south west	56 01 46
Small Rapid on the Red Willow River	56 15 00
Head of the Rapids on the Red Willow River	56 27 16
Foot of the Rapids on the Red Willow River	56 35 35
On a small Island after entering the Athapescow River about 3 miles	56 45 26
On the Athapescow River opposite a small Creek	57 29 26
At <i>a</i> on the Athapescow Lake	58 47 56
At <i>b</i> on the Athapescow Lake	59 00 00
At <i>c</i> on the Athapescow Lake	59 05 16
At <i>d</i> on the Athapescow Lake	59 24 15
At <i>e</i> on the Athapescow Lake	59 07 47
At <i>f</i> on the Athapescow Lake	59 16 12
At <i>g</i> on the Athapescow Lake	59 09 22
At <i>h</i> on the Athapescow Lake	59 21 23
At <i>i</i> on the Athapescow Lake Longitude 107° 17' ½	59 14 14
On the Slave River	59 04 06
At Strong Rapid on the Slave River	59 17 30
On the Slave River	59 38 38
Head of the Falls where the Dog River falls into the Slave River, Long. 111° 30'	59 51 29
Great Fall Carrying Place	60 00 03
On Slave River	60 21 37
On Slave River Longitude 112° 33' 22"	60 31 35
On Slave River	60 33 10
On Slave River Longitude 112° 23'	60 35 47
On Slave River	60 42 40
On Slave River	61 11 05
On Slave River	61 13 42

<i>Between MOOSE FORT and LAKE SUPERIOR.</i>		LATITUDE.
1781.	Nearly the middle of Mecowbanish Lake on the Eastern Shore	48° 58' 30" N.
	Mishipicoten	47 56 00 N.
<hr/>		
<i>Between MOOSE FORT and ABBITIBBE, TEMISCAMAIN, &c.</i>		
1782.	Plumb Pudding Island in Abbitibbe River	50 20 00 N.
	{ Abbitibbe River at the Mouth of Abbitibbe Lake	48 47 30 N.
	{ Abbitibbe River, Longitude from Greenwich, 80° 02' W.	
	{ One mile from the Abbitibbe Lake	48 45 00 N.
	{ Longitude of Abbitibbe Lake 79° 05' W.	
	{ The Canadian Settlement at Abbitibbe Lake	47 37 00 N.
	{ The Canadian Settlement at Abbitibbe Lake, Long. from Green 79° 09' W.	
	Mesuckamy Lake where the Track enters from the Athacana River . . .	50 10 00 N.
	At a Point on the West Shore of Mesuckamy Lake, formed by a small Bay	50 29 00 N.
1787.	Soweyawamineca Canadian Settlement	47 54 00 N.
	Upatchawanau, or Temiscamain Canadian Settlement	47 17 30 N.
<hr/>		
<i>Between YORK FACTORY and CUMBERLAND HOUSE, by the Way of PORT NELSON'S RIVER.</i>		
1778.	At the First Two Islands up Port Nelson's River	56 57 04 N.
	One Mile North of Hell Gate Fall	56 37 48 N.
	On the Fourteenth Carrying Place (Length 150)	56 24 14 N.
	The First Carrying Place above the Gull Lake	56 07 30 N.
	The Cliff Carrying Place in Little Grass River	55 43 00 N.
	Near the East End of the large Island in the Lake below Grass River, and } near the Mouth of the River	54 57 19 N.
	At a Point near the Middle of the Lake below Sweet Herb Lake	54 52 12 N.
<hr/>		
<i>Between YORK FACTORY and CUMBERLAND HOUSE, by Way of HAYES'S RIVER.</i>		
1779.	On the South Side of the Devil's Drum Island	53 23 00 N.
	In the Cader Lake, about 4 miles N. W. by N. of the Long Point	53 13 00 N.
	At the Upper End of the Short Carrying Place of the Great Rapid, above } Lake Winnipeg	53 12 00 N.

	LATITUDE.
1779. At the small Bay at the Bottom of the Great Rapid	53° 14' 00" N.
About 10 miles from the N. W. Point of the Sandy Bay, Lake Winnipeg	53 51 00 N.
1792. About 13 miles N. W. of the above Point	53 49 00 N.
The Mossy Point in Lake Winnipeg S. E. by E. 3 miles	58 33 30 N.
1779. Buscascagan, or Play Green	53 53 00 N.
Painted-stone Carrying Place	54 26 00 N.
On the Lower End of the White Fall Carrying Place	54 28 00 N.
In the Knee Lake, about 10 miles N. of the Knee	55 06 00 N.
In Hayes's River, 4 miles N. of Steel River Point	56 26 00 N.
At the Mouth of the Sitting River (Saskashawan River)	53 10 00 N.
1781. Rupert's River House	51 29 27 N.
1791. Junction of the Wawashagummow, or Clear Water River, with the Red } Willow River	56 39 00 N.
3½ miles west of the Back Road	56 42 00 N.
3½ miles east of the Back Road	56 41 37 N.
North Side of the Methy Carrying Place	56 42 04 N.
Entrance of the Methy Lake	56 23 20 N.
North End of the Methy Lake	56 33 20

Latitude observed by Mr. M^c KENZIE, in 1789. Extracted from his Original.

Canadian Settlement	61 28 00 N.
Big Island in the Slave Lake	61 34 00 N.
At an Island in the Slave Lake, a Canadian Settlement	62 24 00 N.
In M ^c Kenzie's River	67 47 00 N.
Entrance of the North Sea	69 01 00 N.
Whale Island	69 14 00 N.

Results of Observations made by Mr. WILLIAM WALES, Mathematical Master to Christ's Hospital, in his Voyage to HUDSON'S BAY, for the Observation of the TRANSIT of VENUS, in 1769.

Cape Resolution	61° 29' 00" N.	65° 16' 00" W.
Saddle Back Island	67 07 00	68 13 00
Upper Savage Islands	62 32 30	70 48 00
Cape Charles	62 46 00	74 15 00
Salisbury Isle	63 29 00	76 47 00
Cape Wostenholme	62 39 00	77 48 00
Cape Digges	62 41 00	78 50 00
North End of Mansel Island	62 38 30	80 33 00
Churchill	48 57 32	94 12 30

LATITUDES *Observed by Captain HANWELL, in HUDSON'S BAY.*

South End of Mansfield Island	61° 35"
Cape Pembroke	63 00
Caryswans Nest	62 25
Cape Southampton	62 10
Cape Smith	60 52
North Sleepers	62 08
West Sleepers	59 08
Belchers, from	{ 56 20
to	
Cape Henrietta Maria	55 10
North End of North Bear	54 37
South Bear	54 25
Gasket Rock	54 13
North West End of Agoomska	53 34
North East End of Agoomska	53 32
South East End of Agoomska	52 50
North End of North Terin	53 30
South End of South Torin	53 12
North-most Westons	52 46
South-most Westons	52 39
South-most Tiders	52 20
Gasket Shoal	52 28
Charlton Isle	51 55
Outer Buoy 5 leagues east of North Bluff	51 38

BUCKINGHAM HOUSE. By Mr. PETER FIDLER, in the Years 1792 and 1793.

10 Meridian altitudes of the ☉'s lower limb, mean 53° 51' 35" N.

From November 3d, 1792, to May 20th, 1793.

61 Distances of the ☉ and ☽, the ☉ west, . . . }
86 Distances of the ☉ and ☽, the ☉ east, . . . } Mean of all 110 51 23 W.
20 Distances of the * and ☽, the * west, . . . }
28 Distances of the * and ☉, the * east, . . . } Variation 18 00 18 E.

RED DEER RIVER, 1792.

Novem. 19th. Meridian altitude of the ☉'s lower limb 52 21 25 N.
30 Distances of ☉ and ☽, ☉ west, mean 113 15 00 W.

At a Place 10 miles N. N. E. ½ E. of ASKOWSEEPEE; or, BAD RIVER, 1792.

Decem. 8th. Meridian altitude of the ☉'s lower limb 50 00 35 N.
20 Distances of ☉ and ☽, the ☉ east, 111 12 45 W.

At STOMMIX E PIS CON NEE HEAT TAT TI; or, BULL BUFFALO POND RIVER; the Rocky Mountains bearing S. W. distant about 12 miles.

January 16th. Meridian altitude of the ☉'s lower limb 50 23 33 N.
17th. Variation 17 51 45 E.

At a Place near the Head of STOMMIX E PIS CON NEE HEAT TAT TI; or, BULL BUFFALO POND RIVER, the Rocky Mountain bears S. W. ½ W. distant 6 miles.

Latitude 50 23 39 N.
32 Distances of ☉ and ☽, the ☉ west, 114 24 19 W.

Mr. FIDLER went from this place E. S. E. 4 ½ miles, then S. by W. 12 miles, S. S. W. 14 miles, S. W. by S. 3 miles, and lastly, west 1 ½ mile, and then arrived at the Tents of the CATTANAHOWES, 3 miles within the Stony Mountain, on December 31, 1792, where he observed the latitude to be 49° 52' 03", and then returned. The Stony Mountain is therefore in longitude 114° 47' 19" west.

On the SASKACHAWAN RIVER, 62 leagues West of MANCHESTER HOUSE,
and 37 leagues West of BUCKINGHAM HOUSE, 1793.

April 6th. 30 Distances of the ☉ and ☽, the ☉ east,	113° 35' 58"
From this place Mr. FIDLER went S. by W. 9 miles, and on April 7, observ- ed the sun's meridian altitude, which gave the latitude of the place he was then at	53 45 47 W.
So that the latitude of the place on the Saskachawan River, where the fore- going longitude was observed, must have been	53 53 37 N.
And the longitude of this latter place where the latitude was observed was . . .	113 43 22 W.

MANCHESTER HOUSE, situated on the SASKACHAWAN RIVER, and 25
leagues to the eastward of BUCKINGHAM HOUSE.

1792, October 4th, and 1793, May 30th, from 2 meridian altitudes of the ☉'s lower limb	53 14 18 N.
---	-------------

CHATHAM HOUSE, &c. By Mr. DAVID THOMPSON, in the Years 1792 and 1793.

Latitude by 5 meridian altitudes of the ☉'s lower limb, mean	55 23 40
Long. west of Greenwich, by 9 sets, of ☽ and *, the * east, 97° 37' 32" }	97 48 41 W.
Long. west of Greenwich, by 5 sets, of ☽ and *, the * west, 97 59 51 }	53 53 00 N.
Play Green, or Puscacogan,	53 53 00 N.
Play Green, or Puscacogan, longitude west, 97 54 00 W.	54 25 00 N.
The East End of White Fall Carrying Place	54 25 00 N.
The East End of White Fall Carrying Place, longitude west, 96 57 00 W.	55 19 00 N.
A Sandy Bay, nigh the End of Swampy Lake, Head of Hill River,	55 19 00 N.
Ditto, Ditto, longitude west 94 15 00	46 48 39 N.
1764. Quebec, latitude } Samuel Holland, Esq. 71 12 06	46 48 39 N.
Longitude from Greenwich, }	
1776. Muskitto Cove, latitude	64 55 13 N.
Longitude west from Greenwich, Lieutenant Pickergeil, 53 03 45	59 38 00
Cape Farewell, latitude,	59 38 00
* Cape Farewell, longitude, 42 42 00	47 32 00
1784, And 1785 Saint John's, Newfound Land, latitude,	47 32 00
Longitude from Greenwich, Admiral Campbell, 52 29 00	47 36 20
1764. Burgeo Isles, latitude,	47 36 20
Longitude from Greenwich, Captain Cook 57 36 30	
Louisbourg, latitude	45 54 00 N.
Longitude from Greenwich,	59 55 00 W.
Charlotte Town, latitude	46 14 00 N.
Charlotte Town, longitude } Mr. Wright.	62 50 00 W.
Isle Anticoste, S. W. Point, latitude	49 22 00 N.
Isle Anticoste, S. W. Point, longitude	63 42 30

* Cape Farewell here meant, is that Land seen by the Lion Brig, in 1776.

Observations between MISHIPICOTON and LAKE WINNIPEG.

By Mr. VANDRIEL, 1791.

	LATITUDE.
River du Pic, Lake Superior	48° 36' 11"
{ Grand Portage. }	48 11 18
{ Longitude by ☉ and ☽ }	{ 89° 41' 06"
Elk Lake	48 1 41
West End of the New Portage	48 4 27
Height of Land Portage	48 5 40
Wooden Horse Portage	48 8 04
{ White Wood Portage }	48 1 45
{ Longitude by ☉ and ☽ }	{ 93 12 05
In the Narrows, Lac la Plue	49 3 02
Fort Lac la Plue	48 35 49
Island Portage	50 7 31
{ At the Barrier }	50 7 51
{ Longitude by ☉ and ☽ }	{ 95 8 30
At the Provision Store, bottom of the River Winnipeg,	50 33 12

Result of Astronomical Observations made at NOOTKA and the following Places.

By Captain COOK, in 1778.

Latitude of the Observatory	Sun	49° 36' 1" 15"
	Stars	South 49 36 8 36
		North 49 36 10 30
Mean of these means	49 36 6 47 N.	

LONGITUDE.

SHIP COVE.	20 Sets taken on the 21st and 23d of March	233° 26' 18" 7"
	93 Sets taken at the Observatory	233 18 6 6
	24 Sets taken on the 1st, 2d, and 3d of May	233 7 16 7
Mean of all	233 17 44 0 E.	

Captain COOK's Voyages, Vol. II. Page 337.	But by reducing each set taken before they arrived in the Sound and after they left it, by the Time-keeper, and adding them up with those made on the spot, the mean of the	233 17 30 5 E.	} per Lunar.
		or	
	137 sets will be	19 44 37 30 Var. E.	
	Time-keeper, Greenwich Rate,	233 46 51	
Time-keeper, Ulictea Rate,	233 59 24		

In the Harbour of SAMGANOODHA,

		LATITUDE.
Captain Cook's Voyages, Vol. II. Page 523.	Latitude by the mean of several meridian altitudes	53° 55' 00" N.
	Longitude by the mean of twenty sets of Lunar Observations, the ☉ E.	193 47 45 E.
	By the mean of fourteen sets, the ☉ west	193 11 45
	Mean	193 29 45 E.
Variation 19° 59' 15" East,	166 30 15 W.	

At SHOAL NESS.

Page 436	Latitude of Ship's place	59 37 30 N.
	Longitude by a great number of Lunar Observations made during five days, all reduced to the Ship's station, gave	197 45 48 E.
	Or	162 14 12 W.
	By the Time-keeper	197 26 48
Variation	22 56 51 E.	

CHACKTOOLE BAY, NOTON SOUND.

Page 486	Latitude	64 31 00 N.
	Longitude from 77 sets of Lunar Observations, mean	197 13 00 E.
	Or	162 47 00 W.
Variation	25 45 00 E.	

SPEEDILY WILL BE PUBLISHED,

By A. ARROWSMITH,

A M A P

OF THE

UNITED STATES

OF

NORTH AMERICA.

