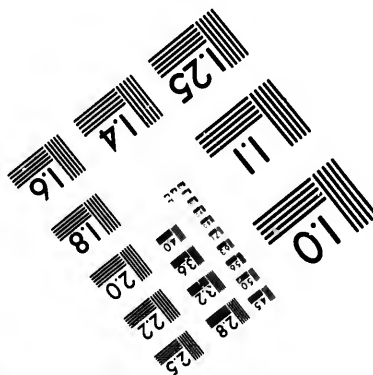
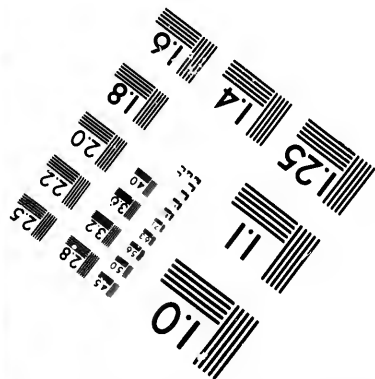
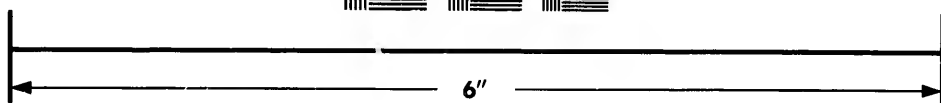
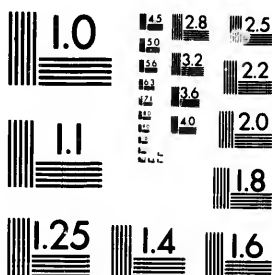


**IMAGE EVALUATION
TEST TARGET (MT-3)**



**Photographic
Sciences
Corporation**

23 WEST MAIN STREET
WEBSTER, N.Y. 14580
(716) 872-4503

1.5 2.8
1.6 3.2
1.8 3.6
2.0 4.0
2.2 4.5
2.5 5.0

**CIHM/ICMH
Microfiche
Series.**

**CIHM/ICMH
Collection de
microfiches.**



Canadian Institute for Historical Microreproductions / Institut canadien de microreproductions historiques

110

© 1982

Technical and Bibliographic Notes/Notes techniques et bibliographiques

The Institute has attempted to obtain the best original copy available for filming. Features of this copy which may be bibliographically unique, which may alter any of the images in the reproduction, or which may significantly change the usual method of filming, are checked below.

L'Institut a microfilmé le meilleur exemplaire qu'il lui a été possible de se procurer. Les détails de cet exemplaire qui sont peut-être uniques du point de vue bibliographique, qui peuvent modifier une image reproduite, ou qui peuvent exiger une modification dans la méthode normale de filmage sont indiqués ci-dessous.

- | | |
|---|---|
| <input type="checkbox"/> Coloured covers/
Couverture de couleur | <input checked="" type="checkbox"/> Coloured pages/
Pages de couleur |
| <input type="checkbox"/> Covers damaged/
Couverture endommagée | <input type="checkbox"/> Pages damaged/
Pages endommagées |
| <input type="checkbox"/> Covers restored and/or laminated/
Couverture restaurée et/ou pelliculée | <input type="checkbox"/> Pages restored and/or laminated/
Pages restaurées et/ou pelliculées |
| <input type="checkbox"/> Cover title missing/
Le titre de couverture manque | <input checked="" type="checkbox"/> Pages discoloured, stained or foxed/
Pages décolorées, tachetées ou piquées |
| <input type="checkbox"/> Coloured maps/
Cartes géographiques en couleur | <input type="checkbox"/> Pages detached/
Pages détachées |
| <input type="checkbox"/> Coloured ink (i.e. other than blue or black)/
Encre de couleur (i.e. autre que bleue ou noire) | <input checked="" type="checkbox"/> Showthrough/
Transparence |
| <input type="checkbox"/> Coloured plates and/or illustrations/
Planches et/ou illustrations en couleur | <input type="checkbox"/> Quality of print varies/
Qualité inégale de l'impression |
| <input type="checkbox"/> Bound with other material/
Relié avec d'autres documents | <input type="checkbox"/> Includes supplementary material/
Comprend du matériel supplémentaire |
| <input type="checkbox"/> Tight binding may cause shadows or distortion along interior margin/
La reliure serrée peut causer de l'ombre ou de la distortion le long de la marge intérieure | <input type="checkbox"/> Only edition available/
Seule édition disponible |
| <input type="checkbox"/> Blank leaves added during restoration may appear within the text. Whenever possible, these have been omitted from filming/
Il se peut que certaines pages blanches ajoutées lors d'une restauration apparaissent dans le texte, mais, lorsque cela était possible, ces pages n'ont pas été filmées. | <input type="checkbox"/> Pages wholly or partially obscured by errata slips, tissues, etc., have been refilmed to ensure the best possible image/
Les pages totalement ou partiellement obscurcies par un feuillet d'errata, une pelure, etc., ont été filmées à nouveau de façon à obtenir la meilleure image possible. |
| <input type="checkbox"/> Additional comments:/
Commentaires supplémentaires: | |

This item is filmed at the reduction ratio checked below/
Ce document est filmé au taux de réduction indiqué ci-dessous.

10X	14X	18X	22X	26X	30X
<input type="checkbox"/>	<input type="checkbox"/>	<input checked="" type="checkbox"/>	<input type="checkbox"/>	<input type="checkbox"/>	<input type="checkbox"/>
12X	16X	20X	24X	28X	32X

The copy filmed here has been reproduced thanks to the generosity of:

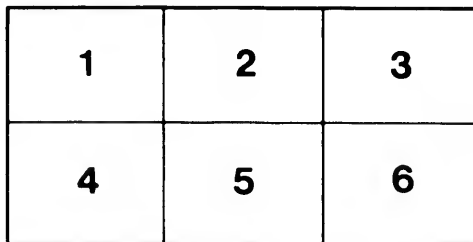
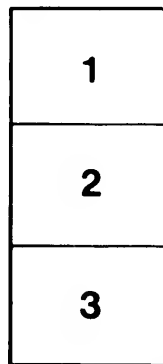
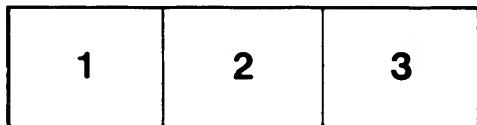
Library Division
Provincial Archives of British Columbia

The images appearing here are the best quality possible considering the condition and legibility of the original copy and in keeping with the filming contract specifications.

Original copies in printed paper covers are filmed beginning with the front cover and ending on the last page with a printed or illustrated impression, or the back cover when appropriate. All other original copies are filmed beginning on the first page with a printed or illustrated impression, and ending on the last page with a printed or illustrated impression.

The last recorded frame on each microfiche shall contain the symbol \rightarrow (meaning "CONTINUED"), or the symbol ∇ (meaning "END"), whichever applies.

Maps, plates, charts, etc., may be filmed at different reduction ratios. Those too large to be entirely included in one exposure are filmed beginning in the upper left hand corner, left to right and top to bottom, as many frames as required. The following diagrams illustrate the method:



L'exemplaire filmé fut reproduit grâce à la générosité de:

Library Division
Provincial Archives of British Columbia

Les images suivantes ont été reproduites avec le plus grand soin, compte tenu de la condition et de la netteté de l'exemplaire filmé, et en conformité avec les conditions du contrat de filmage.

Les exemplaires originaux dont la couverture en papier est imprimée sont filmés en commençant par le premier plat et en terminant soit par la dernière page qui comporte une empreinte d'impression ou d'illustration, soit par le second plat, selon le cas. Tous les autres exemplaires originaux sont filmés en commençant par la première page qui comporte une empreinte d'impression ou d'illustration et en terminant par la dernière page qui comporte une telle empreinte.

Un des symboles suivants apparaîtra sur la dernière image de chaque microfiche, selon le cas: le symbole \rightarrow signifie "A SUIVRE", le symbole ∇ signifie "FIN".

Les cartes, planches, tableaux, etc., peuvent être filmés à des taux de réduction différents. Lorsque le document est trop grand pour être reproduit en un seul cliché, il est filmé à partir de l'angle supérieur gauche, de gauche à droite, et de haut en bas, en prenant le nombre d'images nécessaire. Les diagrammes suivants illustrent la méthode.

ils
lu
ifier
ne
age

ata

elure,
à

12X

The Firemen's Trumpet

R. MATHISON]

VANCOUVER, APRIL 14, 1887

[Publisher

FIREMEN'S
Amateur  
  *Minstrels*
Skating Rink
Thursday Evening, April 14th, 1887

OFFICERS:

J. A. MATEER, President; H. A. BERRY, Manager; M. GOODERHAM,
Stage-Manager; THOS. BECKET, Secretary

The Proceeds of the Entertainment are in aid of the Benevolent Fund
Performance to commence at 8 o'clock sharp * * * * * Order carriages for 10:30

THE LEADING BOOT & SHOE HOUSE

CORDOVA STREET

I have lately added largely to my Stock and now carry
Everything in the Boot and Shoe Line.

 BRANCH STORE ON HASTINGS ST. **G. L. Allan**

Opp. Mathison's Job Printing Office

PR
Va
E
1887

THE CITY DRUG STORE !



CHARLES NELSON

CHEMIST & DRUGGIST

CARROLL STREET

Pure Drugs and Medicines !

FULL LINES OF

Patent Medicines and Toilet Articles !

New Garden and Flower Seeds

THE

Gold ♦ House

WATER STREET

STRICTLY FIRST-CLASS

*The Largest and Best Furnished
Hotel in the City.*

Sample and Bath Rooms and a large
fire-proof safe for the comfort and con-
venience of Guests.

THE CUISINE

Is under the immediate supervision of
Mrs. Gold, which is a guarantee that
guests will receive every delicacy that the
market affords

Polite and attentive servants.

EMMA GOLD

Proprietress

VANCOUVER

Glee and Madrigal Society

—♦♦♦—
FIRST CONCERT

—ON—

✧ Tuesday Evening, April 19, 1887 ✧

—IN—

THE METHODIST HALL

The Audience are requested to be in their seats at 5 minutes before 8 o'clock as
the National Anthem will be sung at 8 o'clock precisely.

TICKETS (\$1.00 each) may be obtained of any member of the Society, or will
be mailed on receipt of remittance by

J. S. ADAMS

DIRECTOR

WATER STREET

PROGRAMME

PART I.

OVERTURE—	Orchestra
OPENING CHORUS— "Swanee River"	Company
"Gospel Raft," (<i>Tambo</i>)	H. A. Berry
BALLAD— ... "I'll Take You Home Again, Kathleen"	F. N. Mitchell
"In the Morning by the Bright Light," (<i>Bones</i>)	W. Lord
BALLAD— ... "A Boy's Best Friend is His Mother..."	C. M. Hawley
"Mary's Gone with a Coon," (<i>Tambo</i>)	J. Mateer
SONG— ... "Old Kentucky Home"	Master E. Miller
"Climbing up the Golden Stairs," (<i>Bones</i>)	J. Beatty
SONG— ... "Sweet Sunny South"	R. Rutherford
GRAND FINALE— ... "The Skids Are Out To-day"	Company

PART II.

OVERTURE—	Orchestra
IRISH CHARACTER SONG AND DANCE	M. Gooderham
BANJO SOLO—	H. A. Berry
AGED NEGRO ACT—	J. Mateer

FARCE

Senator McGinnis' Trip to Kansas !

Senator McGinnis	M. Gooderham
Landlord	F. N. Mitchell
Other Characters by Company	

DUTCH CHARACTER SONG	C. M. Hawley
IRISH CHARACTER SONG	F. N. Mitchell
CHARACTER SONG	W. R. Lord

To Conclude with the Side-Splitting Farce

❖ "FITS," OF "IRISH JUSTICE" ❖

Justice	M. Gooderham
Prosecuting-Attorney	Geo. L. Schetky
Lawyer DeBum	H. A. Berry
Officer O'Reilly	W. R. Lord

Other Characters by the Company

A. G. PERRY, Bookseller, Stationer, and Dealer in Toys and Fancy Goods.
Japanese Curios a Specialty. Opp. Meth. Hall, WATER ST.

Ogle, Campbell & Co.

DIRECT IMPORTERS OF

Gents' Furnishings

BOOTS & SHOES

FERGUSON BLOCK

VANCOUVER

Columbia Street
New Westminster

J. S. CLUTE & CO.

DIRECT IMPORTERS OF

Dry :
Goods

WATER STREET

"COSMOPOLITAN HOTEL"

AND RESTAURANT

COR. ABBOTT & CORDOVA STS.

Open Day and Night

Well known as a well-furnished and well-fitted house throughout. The Chop House is run by first-class caterers, and private dining rooms for ladies and gentlemen are provided.

The Bar is well stocked with the Best Wines, Liquors and Cigars.

Call and get a Nice Steak or Chop
after the Entertainment.

J. COHEN, - - Manager

H. A. BERRY

ALL KINDS OF

TRUCK AND DRAY WORK

Baggage Promptly Delivered to
or from the Boat

Moderate Rates and Uniform Charge

MILK ! MILK !

THE PITT MEADOWS DAIRY of Port
Hammond will be prepared to supply
the people of Vancouver with the above
article

FRESH AND PURE

About the middle of April

Arrangements have been made with the undersigned who will represent the P. M. Dairy here, to receive the milk, which will be shipped daily per express to this city. For all further information, terms, etc., apply to

G. F. UPHAM,
Agent for Pitt-Meadows Dairy
Carroll St. McClellan & Barnes' Building.

B. C. BOOKSTORE

ALL THE NEW NOVELS

BY POPULAR AUTHORS

Fashion Journals of Every Description

NOTE PAPER AND ENVELOPES

THE NOBBIEST IN B.C.

Blank Books and Office
Requisites our Specialty

CORDOVA ST. C. Z. PERRY

R. MATHISON, Jr., FINE JOB PRINTER

HASTINGS ST. WEST

