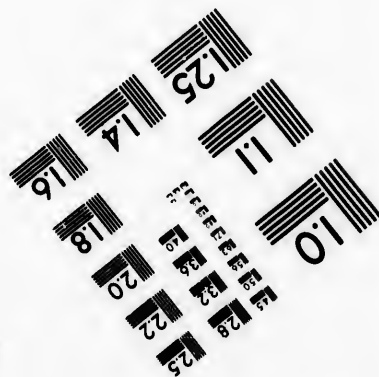
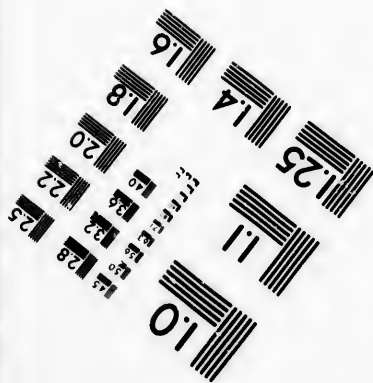
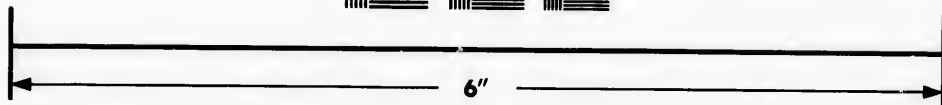
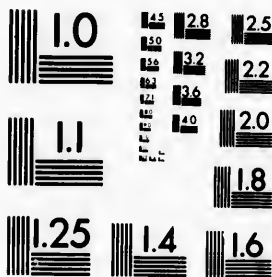


**IMAGE EVALUATION
TEST TARGET (MT-3)**



**Photographic
Sciences
Corporation**

23 WEST MAIN STREET
WEBSTER, N.Y. 14580
(716) 872-4503



**CIHM/ICMH
Microfiche
Series.**

**CIHM/ICMH
Collection de
microfiches.**



Canadian Institute for Historical Microreproductions / Institut canadien de microreproductions historiques



© 1981

Technical and Bibliographic Notes/Notes techniques et bibliographiques

The Institute has attempted to obtain the best original copy available for filming. Features of this copy which may be bibliographically unique, which may alter any of the images in the reproduction, or which may significantly change the usual method of filming, are checked below.

L'Institut a microfilmé le meilleur exemplaire qu'il lui a été possible de se procurer. Les détails de cet exemplaire qui sont peut-être uniques du point de vue bibliographique, qui peuvent modifier une image reproduite, ou qui peuvent exiger une modification dans la méthode normale de filmage sont indiqués ci-dessous.

- Coloured covers/
Couverture de couleur
- Covers damaged/
Couverture endommagée
- Covers restored and/or laminated/
Couverture restaurée et/ou pelliculée
- Cover title missing/
Le titre de couverture manque
- Coloured maps/
Cartes géographiques en couleur
- Coloured ink (i.e. other than blue or black)/
Encre de couleur (i.e. autre que bleue ou noire)
- Coloured plates and/or illustrations/
Planches et/ou illustrations en couleur
- Bound with other material/
Relié avec d'autres documents
- Tight binding may cause shadows or distortion
along interior margin/
La reliure serrée peut causer de l'ombre ou de la
distortion le long de la marge intérieure
- Blank leaves added during restoration may
appear within the text. Whenever possible, these
have been omitted from filming/
Il se peut que certaines pages blanches ajoutées
lors d'une restauration apparaissent dans le texte,
mais, lorsque cela était possible, ces pages n'ont
pas été filmées.
- Additional comments:/
Commentaires supplémentaires:

- Coloured pages/
Pages de couleur
- Pages damaged/
Pages endommagées
- Pages restored and/or laminated/
Pages restaurées et/ou pelliculées
- Pages discoloured, stained or foxed/
Pages décolorées, tachetées ou piquées
- Pages detached/
Pages détachées
- Showthrough/
Transparence
- Quality of print varies/
Qualité inégale de l'impression
- Includes supplementary material/
Comprend du matériel supplémentaire
- Only edition available/
Seule édition disponible
- Pages wholly or partially obscured by errata
slips, tissues, etc., have been refilmed to
ensure the best possible image/
Les pages totalement ou partiellement
obscurcies par un feuillet d'errata, une pelure,
etc., ont été filmées à nouveau de façon à
obtenir la meilleure image possible.

This item is filmed at the reduction ratio checked below/
Ce document est filmé au taux de réduction indiqué ci-dessous.

10X	14X	18X	22X	26X	30X
<input type="checkbox"/>	<input type="checkbox"/>	<input type="checkbox"/>	<input checked="" type="checkbox"/>	<input type="checkbox"/>	<input type="checkbox"/>
12X	16X	20X	24X	28X	32X

The copy filmed here has been reproduced thanks to the generosity of:

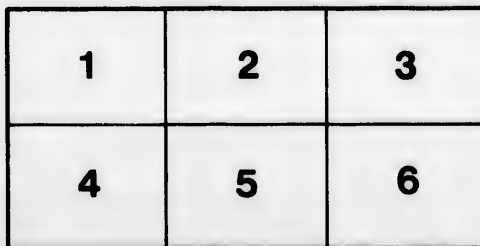
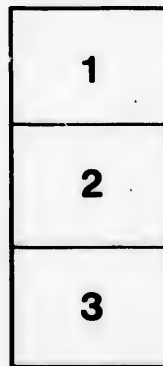
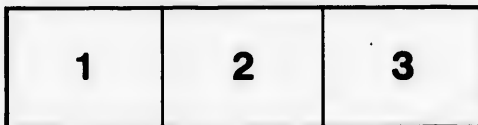
Library of the Public
Archives of Canada

The images appearing here are the best quality possible considering the condition and legibility of the original copy and in keeping with the filming contract specifications.

Original copies in printed paper covers are filmed beginning with the front cover and ending on the last page with a printed or illustrated impression, or the back cover when appropriate. All other original copies are filmed beginning on the first page with a printed or illustrated impression, and ending on the last page with a printed or illustrated impression.

The last recorded frame on each microfiche shall contain the symbol \rightarrow (meaning "CONTINUED"), or the symbol ∇ (meaning "END"), whichever applies.

Maps, plates, charts, etc., may be filmed at different reduction ratios. Those too large to be entirely included in one exposure are filmed beginning in the upper left hand corner, left to right and top to bottom, as many frames as required. The following diagrams illustrate the method:



L'exemplaire filmé fut reproduit grâce à la générosité de:

La bibliothèque des Archives
publiques du Canada

Les images suivantes ont été reproduites avec le plus grand soin, compte tenu de la condition et de la netteté de l'exemplaire filmé, et en conformité avec les conditions du contrat de filmage.

Les exemplaires originaux dont la couverture en papier est imprimée sont filmés en commençant par le premier plat et en terminant soit par la dernière page qui comporte une empreinte d'impression ou d'illustration, soit par le second plat, selon le cas. Tous les autres exemplaires originaux sont filmés en commençant par la première page qui comporte une empreinte d'impression ou d'illustration et en terminant par la dernière page qui comporte une telle empreinte.

Un des symboles suivants apparaîtra sur la dernière image de chaque microfiche, selon le cas: le symbole \rightarrow signifie "A SUIVRE", le symbole ∇ signifie "FIN".

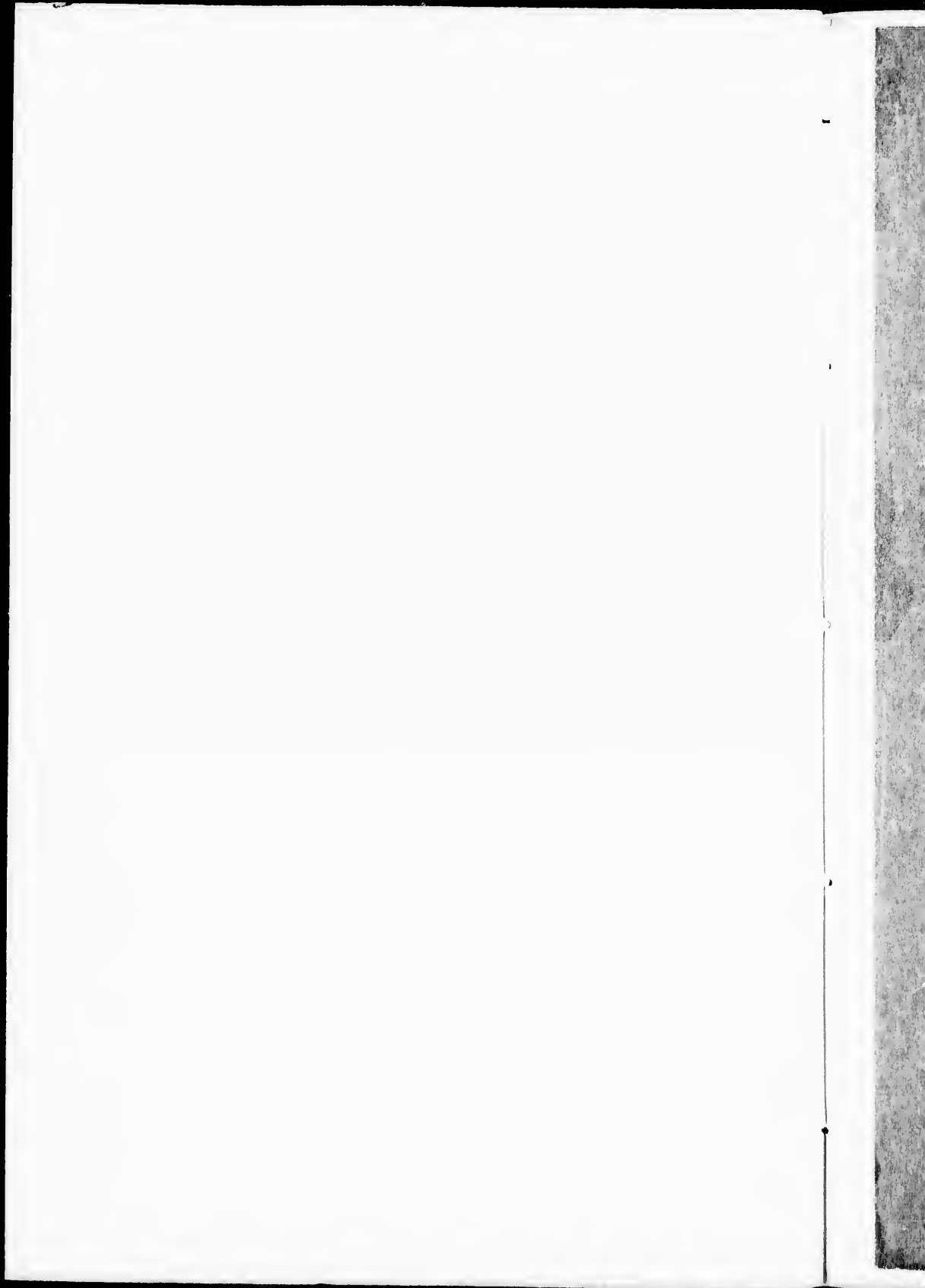
Les cartes, planches, tableaux, etc., peuvent être filmés à des taux de réduction différents. Lorsque le document est trop grand pour être reproduit en un seul cliché, il est filmé à partir de l'angle supérieur gauche, de gauche à droite, et de haut en bas, en prenant le nombre d'images nécessaire. Les diagrammes suivants illustrent la méthode.



ails
du
odifier
une
mage

rrata
o

elure,
n à

32X





STATEMENT

— OF —

SALMON FISHING

— ON —

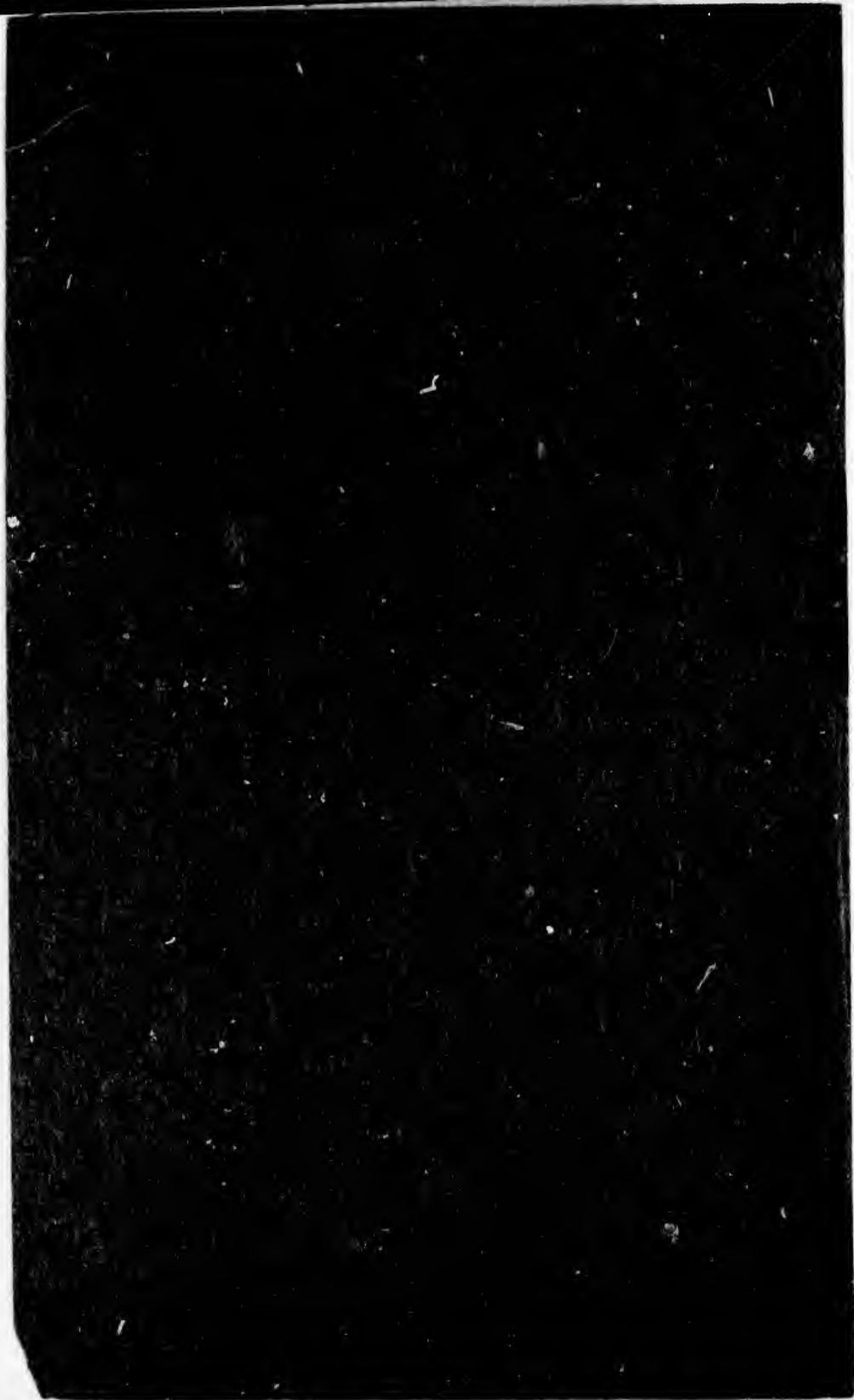
THE RIVER GODBOUT,

— FROM —

SEASON 1859, ONWARDS.



Ottawa :
PRINTED BY A. S. WOODBURN, 36 ELGIN STREET.



STATEMENT OF SALMON FISHING

— ON —

THE RIVER GODBOUT,

— FROM —

SEASON 1859, ONWARDS.

1888

(10)

Printed by A. S. Woodburn, 36 Elgin St., Ottawa

77134a

The River Godbout.

Contributed by one of its now oldest Salmon Fishers.

Again on the Godbout's banks we've met
With trusty rod in hand,
And envy not the greatest Prince
Who reigns o'er happiest land.

For here from the world's cares we're free.
Beneath a genial sky,
While under the rippling waters bright
The silvery salmon lie.

Ready to test the utmost skill
Of the lover of angling art,
And give to the startled nerves a thrill
That pulses from the heart.

Then come with me to the "Upper Pool,"
Well known on thy glorious stream,
And prove for thyself, if doubter thou art,
That its treasures are not a dream.

And take thy stand on the "Gravel Bank,"
Where the water glides swiftly by.
And over its surface lightly cast
The tempting "Fairy Fly."

It touches the water,—a moment floats,—
Then quickly disappears ;
With a magic tug ! and the line runs out !
Now Piscator comes thy fears !

Still hope prevails o'er every fear
That the victory will be thine,
Should no mishap occur in the fight
To break thy fragile line.

But a ready hand and watchful eye
Alone will success command,
And bring the gallant, tho' conquered fish,
At last to the Gaffman's hand.

Oft when "Salmo Salar" has seized the lure,
Quickly down in the water he goes ;
But soon discovering the mistake he has made,
He tugs and shakes his nose.

But all in vain—so he angry gets
 And perhaps, as a fish may—swears
 But be that as it may, he soon dashes off,
 And away through the water tears.

The line now runs out with lightning speed, —
 The reel gives its music sweet ;
 But dependence on these alone won't do,
 So be ready with nimble feet.

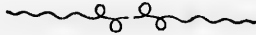
For down the stream he may take a rush,
 In his madness to break away ;
 When thou must be ready to follow him up,
 Or assuredly lose the day.

Again, in his rage to clear the hook,
 With a spring he will dart in the air ;
 And his frantic bounds again repeat,
 Which will claim thy anxious care.

Then thou must be ready with courtier's ease
 His vaulting feats to greet,—
 Quickly lower your rod and make your bow,
 Or misfortune you'll surely meet.

Your line will be snapped like a spider's web,
 When off goes the hoped-for prize ;
 But then too late, you may stamp and rave
 Who such acts polite despise.

At last the dubious fight is o'er—
 The battle's been fought and won ;
 And the coveted prize lies safe ashore,
 A beauty !—a twenty-pounder good !
 Hurra ! a prettier Salmon sure
 Was ne'er seen beneath the sun !



Sal

Fu

July 11

June 18

June 7

June 12

June 8

STATEMENT

-OF-

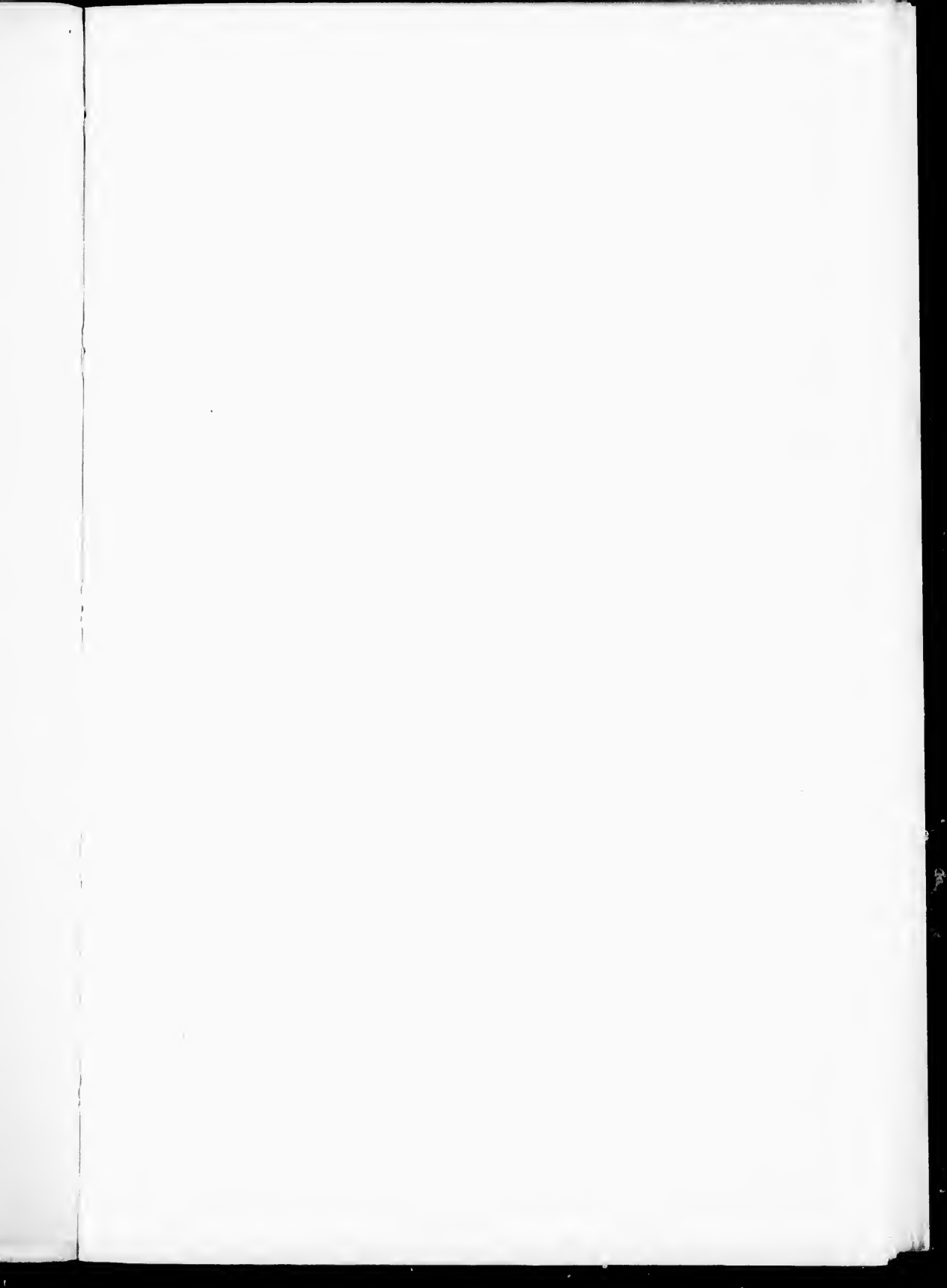
Salmon Taken With the Rod

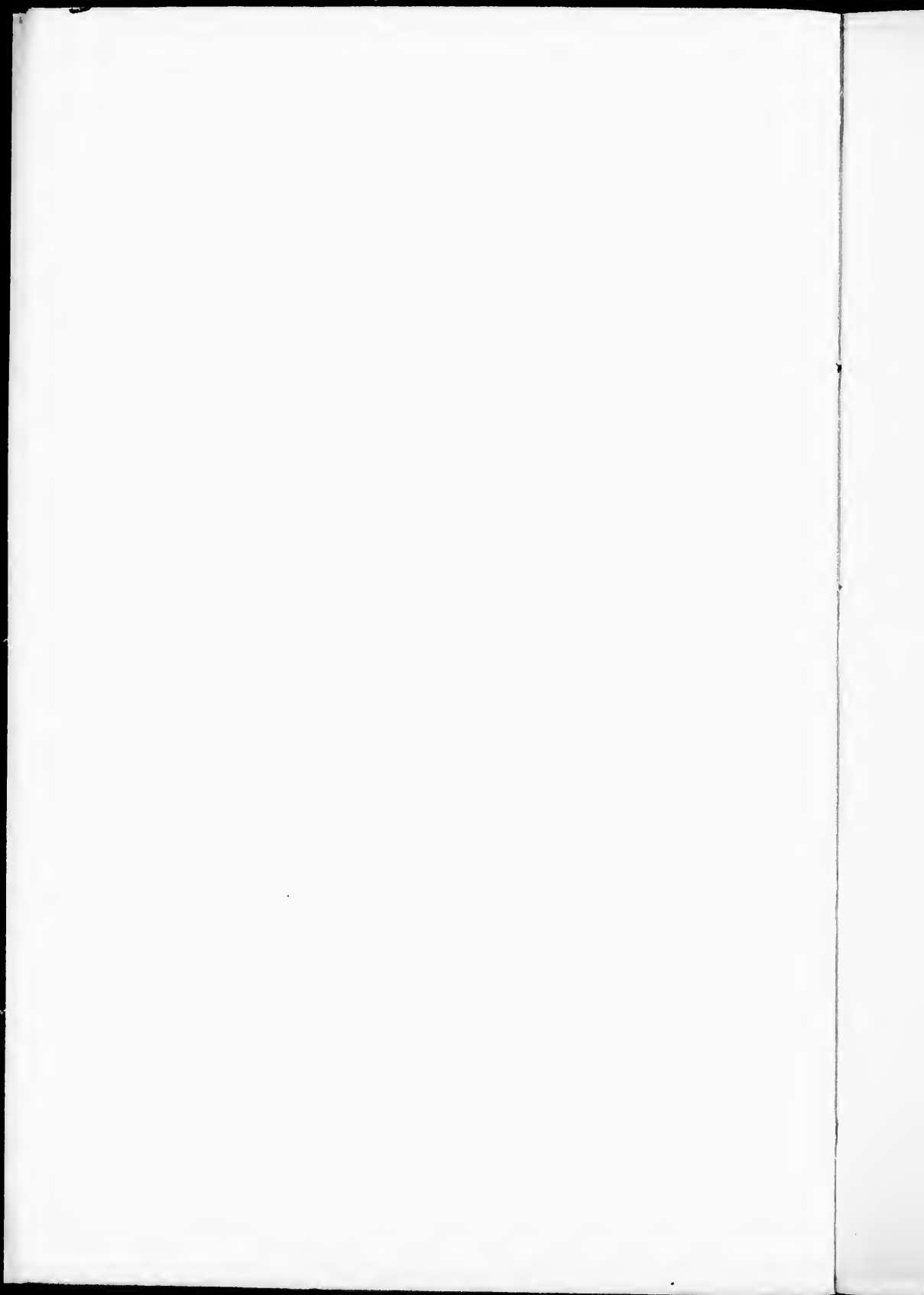
At River Godbout during Seasons 1859 to 1861.

FIRST FISH.	LAST FISH.	No. of Fish.	No. of Rods.	REMARKS.
July 11, 1859.....	July 25.....	167	Three.	Much Rain.
June 18, 1860... ..	July 27.....	47	Two...	Dry Weather.
June 7, 1861	July 24.....	252	Four...	Much Rain—floods.
June 12, 1862.....	July 18.....	279	Three..	2 Grilse.
June 8, 1863.....	July 28... ..	194	Three..	Wet Weather.

STATEMENT OF SALMON FISHING on River Godbout, Season of 1864.

DATE.	Adamson.	J. Law.	A. Gilmour	Powell.		Weight Daily	No. of Fish.	Total Weight.
June 23.....		1				8½		
				2	7½. 8.	15½	3	24
24.....		2			7½. 8.	15½		
				2	8. 9.	17	4	32½
25.....		3			9. 9½. 6½.	25		
			1			9½		
				1		9	5	43½
27.....		6			7. 7½. 7½. 10. 10. 15.	57		
			3		10. 9½. 9.	28½		
				3	11. 9. 7½.	27½	12	113
28.....		2			8. 15.	23		
			2		11. 19.	30		
				3	11. 9½. 6½.	27	7	80
29.....		6			8. 8. 9. 9. 9. 20.	63		
				1		11	7	74
30.....		1				9½		
			1			9		
				1		9	3	27½
July 1.....		1				9		
			4		9. 7. 10. 10.	36		
				1		10	6	55
4.....		5			11. 6. 9. 8. 7.	41		
			6		10. 10. 10. 9½. 9. 8.	56½		
				6	8½. 8. 10. 9. 9. 9.	53½	17	151
5.....		5			6. 8. 7. 9. 8.	55		
			5		8. 9. 10. 10. 11.	48		
				4	7. 10. 10. 10½	37½	14	123½
6.....		2			8. 7.	15		
			1			9		
				4	8. 9. 10. 11.	38	7	62
7.....		3			10½. 8. 7.	25½		
			4		7. 8. 8. 12.	35		
				5	8. 9. 9. 10. 14½	50½	12	111
8.....		2			8½. 8.	16½		
			1			8		
				1		18	4	42½
		39	28	34			101	939½





STATEMENT OF SALMON FISHING ON RIVER GODBOUT, SEASON OF 1864,
(Continued.)

DATE.	Adamson.	J. Law.	A. Gilmour.	Fowell.	Weight Daily.	No. of Fish.	Total Weight.
July 8.....		39	28	34		101	939½
9.....		5	2	3	12 .11.10½.9½.7½. 7 .9. 10 .12.13.	50½ 16 35	101½
11.....		4	1	6	11 .8 .7 .6. 8½.8½.9½.9½.9½.10	32 8½ 55½	96
12.....		1	3	4	7 .8 .9. 7 .17.9½.10.	9 24 43½	76½
13.....		3	6	4	8 .8 .9. 10 .10.9 .9 .8 .8. 10 .10.9 .9½.	25 54 38½	117½
14.....		6	1	1	3 .11½.10.7 .7 .9.	47½ 7	54½
15.....			3	4	10 .10.7½. 8 .9 .17.18.	27½ 53	79½
16.....		2	1		7 .8.	15 8	23
17.....		1	1	1		11 8 8½	27½
19.....				1		3	3
		61	46	57		164	1518½
				164	fish average 9½ lbs.....		1517

STATEMENT OF SALMON FISHING on River Godbout, Season of 1865.

DATE.	Capt. Noble	A. Cross.	J. Law.	Allan Gilmour.	Weight Daily.	No. of Fish.	Total Weight.
June 17.....			1		11½	1	11½
19.....			2	10, 4.....	14	2	14
20.....			6	11, 11, 7, 8, 17, 22 ..	76	7	85
		1			9		
21.....			1		8	1	8
22.....	1				9	10	99
		2		10, 11.....	21		
			7	9, 12, 8, 10, 10, 9, 11,	69		
23.....	1				9	7	67
			2	7, 11	18		
			4	8, 8, 17, 7.....	40		
24.....	1				7	8	86
			4	14, 11, 11, 8.....	44		
			3	11, 7, 17	35		
26.....	2			8, 9.....	17	11	104½
		3		9, 9, 7	25		
			3	16, 10, 8½	34½		
			3	11, 8, 9	28		
27.....	5			9, 10, 12, 14, 18.....	63	20	214
			6	18, 14, 9, 8, 7, 12 ..	68		
			9	11, 10, 7, 9, 9, 9, 12, 7	88		
28.....	5			8, 8, 9, 10, 12.....	47	28	261
		8		10, 10, 11, 8, 8, 9, 8, 11	75		
			9	10, 10, 10, 9, 9, 8, 7, 11	83		
			6	9, 9, 9, 10, 11, 8	56		
29.....	5			10, 10, 10, 8, 9.....	47	26	245
		6		14, 10, 12, 8, 8, 7.....	59		
				10, 9, 9, 7, 11, 10, 9, 9	81		
			6	10, 11, 9, 9, 9.....	58		
30.....	6			10, 9, 9, 9, 8	54	22	195
		6		11, 10, 9, 8, 8, 8	54		
			10	10, 10, 9, 9, 8, 8, 8, 8	87		
July 1.....	2			4 9.....	13	17	172
		9		16, 15, 10, 10, 9, 9, 9, 7	94		
			6	11, 17, 10, 9, 9	65		
	14	35	64	47		160	1562

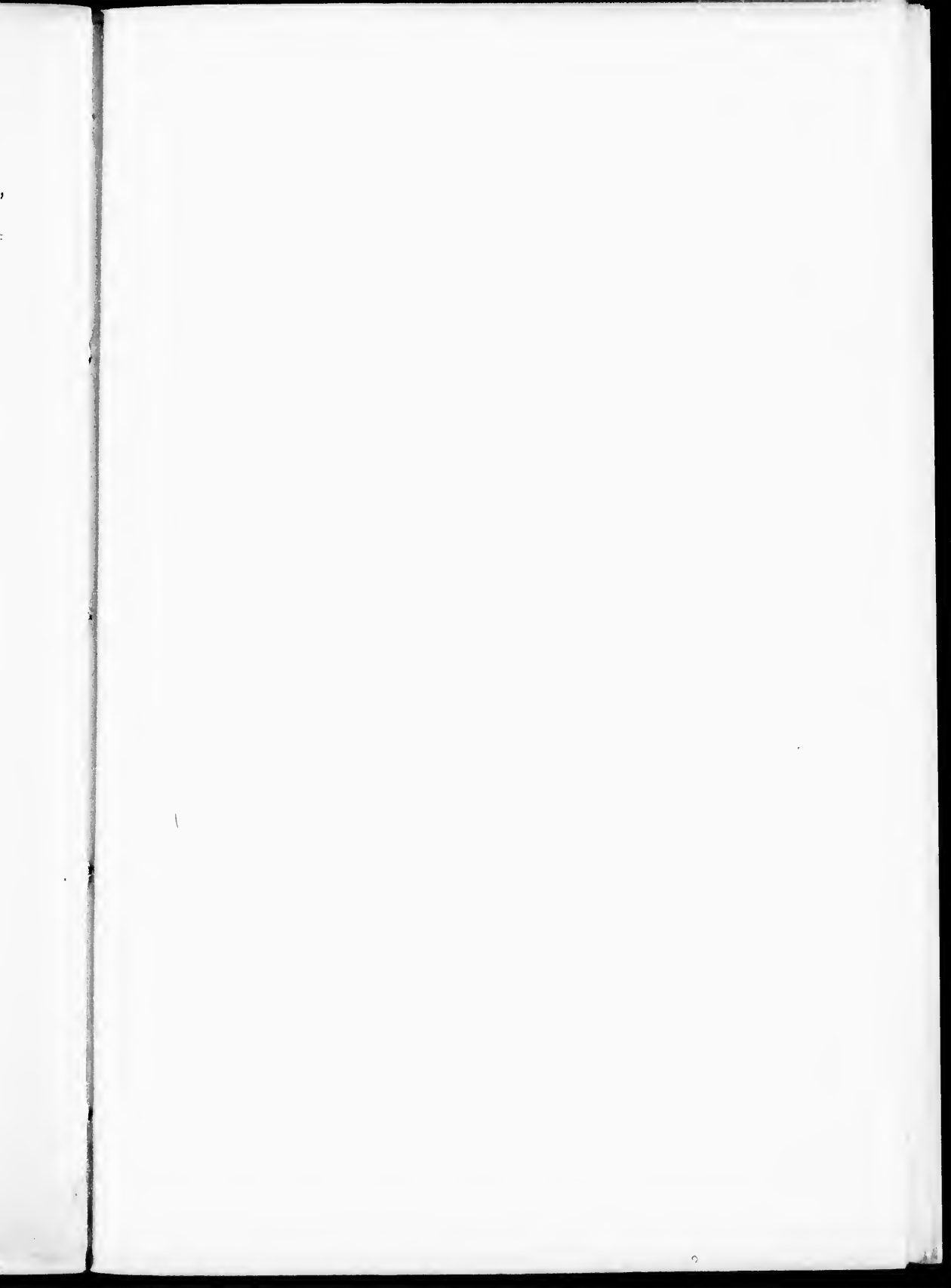
STATEMENT OF SALMON FISHING on River Godbout, Season of 1865,
(Continued.)

DATE.	Capt. Noble.	A Cross.	J. Law.	Allen Gilbourn.	Weight Daily.	No. of Fish.	Total Weight.	
July 1. . . .	14	35	64	47	160	1562	
3.	7	2	12	9	16, 15, 13, 10, 10, 9, 6 14, 9. 10, 10, 10, 10, 9, 9, 8, 8, } 8, 8, 23, 14. 10, 10, 10, 9, 9, 9, 9, 7, 6	79 23 127 79	30	308
4.	2	16	7	6	11, 4. 9, 9, 9, 9, 9, 10, 10, 10, 10, } 11, 16, 21, 19, 19, 9, 10 23, 12, 12, 10, 10, 10, } 10, 10, 9, 9, 9, 8.	15 190 87 55	31	347
5.	5	1	8	30	13, 10, 9, 9, 8. 12, 8, 10, 7, 9, 11, 5, 8 19, 19, 11, 10, 10, 8, 9, 9, } 10, 8, 9, 8, 8, 9, 8, 8, 7, 7, 8. } 6, 20, 10, 10, 10, 14, 9, 11. } 8, 10, 13.	49 8 70 306	44	433
6.	1	7	9	6	9, 9, 9, 8, 8, 4, 16. . . } 21, 15, 14, 10, 10, 10, 9 } 9, 8. 15, 15, 10, 10, 9, 8. . . }	10 43 106 67	23	246
7.	10	3	4	1	20, 12, 11, 11, 10, 9, 9, } 9, 9, 10. } 10, 9, 9. 9, 9, 9, 9.	110 28 36 8	18	182
8.	12	10	4	4	19, 15, 11, 11, 10, 10, 10 } 9, 9, 8, 8, 7. } 8, 8, 9, 9, 10, 11, 10, 9, 7 } 8, 9, 10, 11.	127 90 38	26	255
10.	1	4	3	46	11, 11, 11, 7. 9, 8, 7. 15, 11, 11, 10, 10, 9, 9, 8, 8, } 5, 8, 9, 11, 8, 10, 16, 9, 8, 12 } 8, 8, 9, 9, 11, 10, 8, 9, 15 } 8, 18, 3, 4, 7, 9, 9, 10, 8, 8 } 8, 8, 10, 10, 8, 6.	11 40 24 426	54	501
	40	80	117	149		386	3834	

STATEMENT OF SALMON FISHING on River Godbout, Season of 1865,
(Continued.)

DATE.	Capt. Noble.	A. Cross	J. Law.	Allan Gilmour.	Weight Daily.	No. of Fish.	Total Weight.
July 10.....	40	80	117	149		386	3834
11.....	8	2			15, 11, 11, 9, 9, 9, 8, 8 ...	80	
					9, 10.....	19	
			16		15, 10, 8, 16, 13, 10, 7, 8, 9	} 168	
				7	10, 10, 10, 17, 8, 10, 7..		
					11, 11, 11, 9, 9, 9, 8..	68	33
12.....	1					5	
		4			12, 16, 10, 8.....	46	
			6		9, 8, 7, 13, 9, 9.....	55	
				4	10, 7, 4, 6.....	27	15
13.....		21			5, 7, 10, 10, 8, 8, 9, 10, 10,	} 186	
					10, 9, 9, 9, 9, 9, 9, 9, 9, 9,		
14.....	2				10, 3.....	13	
			15		9, 9, 9, 17, 17, 8, 7, 14, 8 }	} 153	
					8, 9, 9, 10, 8, 11.....		
				5	8, 10, 11, 4, 3.....	36	22
	49	109	154	165		477	4690

477 fish. average $9\frac{1}{2}$ lbs., = 4674 lbs.



S

J

STATEMENT OF SALMON FISHING ON RIVER GODBOUT, SEASON OF 1866

DATE.	A. Gilmour.	J. Dykes.	D. Law.	J. Law.		Weight Daily.	No. of Fish.	Total Weight.
June 16....	2				20, 10.....	30		
				1	16	3	46
17....	3				10, 10, 10.....	30	3	30
18....	10				16, 10, 10, 9, 9, 8, 7, 9, 7, 7..	92		
		4			10, 9, 9, 9.....	37		
				7	12, 9, 10, 10, 10, 8, 8.....	67	21	196
19....	2				10, 19.....	29		
				11	7, 13, 10, 8, 7, 8, 10, 8, 9, } 10, 9.....	99	13	128
20....	18				10, 10, 19, 6, 14, 11, 11, } 10, 9, 10, 11, 10, 10, 8, 8 } 9, 10, 11.....	187		
		3			18, 12, 10.....	40		
				10	18, 10, 11, 12, 7, 12, 7, 9 } 10, 10.....	106	31	333
21....	7				11, 10, 10, 12, 11, 10, 9 ..	73		
		5			11, 9, 8, 7, 12.....	47		
				9	14, 11, 10, 9, 7, 18, 14, } 10, 11.....	104	21	224
22....	3				10, 11, 7.....	28		
		4			7, 9, 7, 8.....	31		
				7	8, 12, 10, 9, 9, 10, 9.....	67	14	126
23....	6				10, 8, 10, 11, 11, 12 ..	62		
		1			18		
				5	11, 9, 8, 8, 10.....	46	12	126
25....	12				9, 25, 12, 10, 10, 8, 8, 10 } 23, 18, 15, 21.....	169		
		3			12, 10, 9.....	31		
				8	10, 10, 10, 8, 9, 12, 10, 9	78	23	278
26....	4				12, 14, 9, 18.....	53		
		4			11, 9, 7, 7.....	34		
				7	16, 12, 9, 12, 10, 10, 10...	79	15	166
27....	5				9, 10, 15, 9, 8.....	51		
		10			17, 10, 11, 9, 11, 8, 11, } 10, 9, 9.....	105		
				6	19, 16, 16, 12, 8, 8 ..	79	21	235
	70	36		71			177	1886

STATEMENT OF SALMON FISHING ON RIVER GODBOUT, SEASON OF 1866,
(Continued.)

DATE.	A. Gilmour.	J. Dykes.	D. Law.	J. Law.	Weight Daily.	No. of Fish.	Total Weight.	
June 27....	70	36		71		177	1886	
28....	8	1	5		8, 11, 12, 8, 9, 10, 10, 12..	80		
					9, 10, 10, 8, 9..	10		
				9	10, 11, 9, 9, 10, 3, 8, 9, 10..	46		
						79	23	215
29....	9				17, 8, 8, 8, 9, 10, 10, 6, 10..	86		
		2			11, 12..	23		
			2		8, 9..	17		
				7	20, 16, 10, 10, 10, 12, 11..	89	20	215
30....	7				9, 9, 6, 6, 7, 8, 10..	55		
		5			8, 9, 8, 8, 7..	40		
			6		10, 10, 10, 10, 11, 9..	60		
				7	12, 12, 9, 10, 8, 10, 9..	65	25	220
July 2....	5				10, 8, 6, 7, 6..	37		
		3			10, 12, 13..	35		
			2		8, 11..	19		
				13	11, 9, 8, 8, 11, 9, 20, 7, } 27, 13, 15, 7, 11.. }	156	23	247
3....	20				11, 3, 9, 10, 8, 8, 7, 6, 7, 7 } 8, 8, 8, 8, 9, 10, 7, 8, 8, 12 }	162		
				4	11, 9, 8, 12..	40	24	202
4....	2				13, 9..	22		
		6			11, 10, 14, 8, 12, 10..	65		
			1			10		
				3	10, 9, 10..	29	12	126
5....	5				8, 9, 10, 11, 10..	48		
		2			11, 10..	21		
			1			12		
				10	8, 9, 9, 9, 9, 9, 10, 10, 11, 12	96	18	177
6....	21				26, 10, 11, 10, 10, 8, 8, } 10, 14, 10, 10, 17, 12, 11 }	226		
					9, 7, 11, 9, 8, 7, 8.. }			
				3	9, 9, 10..	28	24	254
7....		7			12, 14, 9, 6, 3, 10, 7..	61		
			8		17, 10, 8, 9, 3, 8, 11, 8	74	15	185
	147	62	25	127			361	3679

STATEMENT OF SALMON FISHING on River Godbout, Season of 1866,
(Continued,)

DATE.	A. Gilmour.	J. Dykes.	D. Law.	J. Law.		Weight Daily.	No. of Fish.	Total Weight.
July 7	147	62	25	127			361	3679
9	8			24	12, 11, 11, 10, 8, 7, 3, 3. . .	65	32	299
					10, 11, 10, 10, 9, 9, 10, 9, . . .	234		
					11, 12, 8, 9, 8, 12, 9, 9, 10, . . .			
10	23				18, 11, 11, 8, 9, 9, 10, 9, 10, . . .	232	27	270
					10, 9, 17, 11, 9, 11, 9, 11, . . .			
				4	10, 9, 9, 7, 4, 11.	38		
11		3			9, 9, 11.	29	12	112
			4		7, 8, 9, 12.	36		
				5	8, 8, 10, 10, 11.	47		
12	7				10, 11, 7, 8, 4, 4, 4.	48	15	106
		1				3		
			2		10, 4.	14		
				5	10, 10, 9, 9, 3.	41		
13	6				3, 7, 11, 10, 9, 8.	48	9	72
				3	12, 8, 4.	24		
14		9			9, 9, 9, 3, 9, 10, 13, 9, 10.	81	20	183
					8, 10, 12, 10, 10, 8, 3.	61		
				4	11, 11, 10, 9.	41		
16	6				16, 12, 12, 11, 8, 8.	67	18	163
					9, 10, 10, 6, 11, 6, 12, 4,	96		
				12	7, 9, 3, 9.			
17	6				11, 11, 11, 10, 10, 9.	62	6	62
18					12, 11, 4, 10, 7, 10, 3, 10.	67	12	98
				8	18, 5, 4, 4.	31		
19	4				3, 3, 9, 9.	24	7	67
				3	22, 12, 9.	43		
20					9, 4, 4.	17	3	17
21					11, 4, 4, 11.	30	4	30
	207	75	46	198			526	5158

527 fish, average 9 $\frac{3}{4}$ lbs., = 5138 lbs.

STATEMENT OF SALMON FISHING on River Godbout, Season of 1867.

DATE.	A. Gilmour.	Dr. Adamson.	Jas. Law.	Gilmour, Jr.	Weight Daily.	No. of Fish.	Total Weight.	
June 11....	1			1	11 12	2	23	
12.....			1		9	1	9	
13.....			1	2	10 23	3	33	
14.....	3			18, 12, 8	38	3	38	
15.....		1	1		10 18			
17.....	2			1	11	3	39	
18.....		5		9, 11..... 9, 10, 10, 11, 12..... 6 10, 10, 10, 11, 11, 13.	20 52 65	13	137	
18.....		2	4	4	10, 12..... 9, 10, 9, 11..... 4 11, 9, 9, 11.....	22 39 40	10	101
19.....	1		1	2	10 18			
20.....				2	10, 11.....	4	49	
20.....	2		4	2	10, 11..... 11, 11, 11, 10..... 2 10, 11.....	21 43 21	8	85
21.....	5	2	3	3	12, 12, 9, 10, 11..... 28, 15..... 15, 10, 8..... 3 8, 10, 10.....	54 43 33 28	13	158
22.....	7	2	2	2	11, 12, 17, 7, 10, 12, 12 .. 10, 10..... 13, 13..... 2 13, 10.....	81 20 26 23	13	150
24.....	2	3	5	2	10, 8..... 13, 9, 10..... 19, 14, 14, 10, 10..... 2 10, 9.....	18 32 67 19	12	136
	21	17	22	25		85	958	

STATEMENT OF SALMON FISHING on River Godbout, Season of 1867,
(Continued.)

DATE.	A. Gilmour.	Dr. Adamson	Jas. Law.	Gilmour, Jr.	Weight Daily.	No. of Fish.	Total Weight	
June 24...	21	17	22	25		85	958	
25...	3	2	3	10	10, 11, 11 11, 14 11, 10, 10 9, 11, 12, 12, 9, 10, 11, 9 11, 10	32 25 31 104	18	192
26...	2	2	2	5	11, 12 19, 20 10, 12 9, 10, 10, 9	23 39 22 38	11	122
27...	1	1	1	10	19, 12, 11, 10, 10, 10, 13 8, 10, 10	10 12 11 113	13	146
28...	2	4	2		10, 11 9, 12, 17, 20 9, 11	21 58 20	6	99
29...	5	7	6		13, 13, 9, 9, 11 9, 9, 10, 11, 19, 11, 13 9, 10, 13, 9, 10, 10	55 82 61	18	198
July 1...	13	13	6		17, 14, 11, 9, 9, 12, 9, 12 11, 9, 10, 10, 13 8, 9, 11, 10, 13, 8, 9, 9, 9 10, 10, 11, 12 12, 11, 11, 10, 9, 11	146 129 64	32	339
2...	11	6	7		22, 23, 23, 16, 11, 9, 11 10, 11, 11, 11 11, 11, 13, 10, 10, 12 12, 12, 10, 8, 12, 10, 9	158 67 73	24	298
3...	10	5	4		10, 10, 8, 8, 9, 10, 9, 9, 9, 10 12, 10, 12, 12, 11 19, 10, 10, 13	92 57 52	19	201
4...	9	3	7		9, 9, 10, 10, 13, 12, 10 9, 10 10, 12, 13 12, 14, 13, 9, 10, 16, 11	92 35 85	19	212
	77	60	60	50		247	2765	

STATEMENT OF SALMON FISHING on River Godbout, Season of 1867,
(Continued.)

DATE.	A. Gilmour.	Dr. Adairson.	Jas. Law.	Gilmour, Jr.		Weight Daily.	No. of Fish.	Total Weight.
July 4....	77	60	60	50			247	2765
5....	1	3	13		10, 11, 9	10 30		
					12, 11, 13, 10, 9, 14, 9, 11, 10, 9, 10, 9, 11	138	17	178
6....	21		6		17, 13, 13, 8, 9, 9, 8, 12, 9, 12, 10, 10, 11, 11, 12, 10, 9, 9, 7, 8, 11	2, 8 67	27	285
8....	7	5	7		12, 11, 12, 11, 12, 14, 8, 10, 12, 13, 13, 16, 8, 9, 8, 7, 11, 10, 11	80 64 64	19	208
9....	10	1	3		11, 11, 11, 11, 10, 10, 10, 9, 9, 9	101 11 33	14	145
10....	2	5	7		7, 10, 10, 10, 11, 12, 15, 5, 8, 9, 10, 10, 11, 11	17 58 64	14	139
11....	26	1	3		20, 15, 17, 14, 10, 10, 10, 10, 12, 12, 8, 10, 11, 9, 13, 9, 11, 10, 9, 10, 9, 12, 10, 9, 10, 10	290 10 33	30	333
12....	2	6			8, 9, 9, 9, 9, 10, 10, 20	17 67	8	84
13....	2	3			9, 12, 9, 9, 12	21 30	5	51
15....	2	6	6		10, 11, 11, 12, 10, 10, 11, 12, 9, 9, 10, 11, 11, 11	21 66 61	14	148
16....	10	2	4		11, 12, 10, 8, 9, 9, 12, 10, 10, 11, 10, 11, 8, 9, 10, 11	102 21 38	16	161
	158	85	118	50			411	2497

STATEMENT OF SALMON FISHING ON RIVER GODBOUT, SEASON OF 1867,
(Continued.)

DATE.	A. Gilmour.	Dr. Adamson.	Jas. Law.	Gilmour, Jr.		Weight Daily.	No. of Fish.	Total Weight.
July 16...	158	85	118	50	411	2497
17....	4	8, 10, 12, 9.....	39	6	65
		2	12, 11.....	26		
18....	4	13, 12, 11, 8.....	44	5	58
		1	14		
19....	3	8, 9, 10.....	27	4	37
		1	10		
20....	1	10	1	10
	165	89	123	50			427	4667

427 salmon, average $10\frac{3}{166}$ lbs., = 4667.

STATEMENT OF SALMON FISHING on River Godbout, Season of 1868.

DATE.	Allen Gilmour.	A. Cross.	W.M. Ramsay	Weight Daily.	No. of Fish.	Total Weight.
June 15.	1			11	1	14
16.		1		7	1	7
17.	2	2	1	32 18 10	5	60
18.	1	1		14 13	2	27
19.	2	1	1	23 10 13	4	46
20.	2	2	4	19 22 50	8	91
22.	5	8	4	57 116 57	17	230
23.	12	3	3	135 29 30	18	194
24.	6	5	4	62 55 47	15	164
25.	5	18	3	54 209 29	26	292
26.	11	4	6	140 42 61	21	243
27.	23	7	2	268 71 21	32	360
29.	13	16	7	154 181 78	36	413
	83	68	35		186	2141

STATEMENT OF SALMON FISHING ON RIVER GODBOUT, SEASON OF 1868,
(Continued.)

Total Weight.	DATE.	Allan Gilmour.	A. Cross.	W. M. Ramsay	Weight Daily.	No. of Fish.	Total Weight.
14	June 29.....	83	68	35		186	2141
7	30.	14	5	19	159 55 201	38	415
60	July 1.....	1	3	9	14 32 94	13	140
27	2.....	3	16	1	34 164 12	20	210
46	3.....	12	1	3	118 10 32	16	160
91		113	93	67		273	3066

273 Salmon average $11\frac{23}{100}$ lbs. = 3066 lbs.

230
194
5
164
6
292
1
243
32
360
36
413
86
2141

STATEMENT OF SALMON FISHING ON RIVER GODBOUT, SEASON OF 1869.

DATE.	A. Gilmour Ortawa.	J. Gilmour, Glasgow.	J. Gilmour, Quebec.	P. J. W. Montreal.		Weight Daily.	No. of Fish.	Total Weight.	
June 16....	3				12, 10, 11	33	11	127	
		4			10, 19, 15, 11.	55			
			2		9, 11.	20			
			2		9, 10.	19			
17....	3				9, 10, 7	26	13	133	
		3			10, 9, 10.	29			
			2		9, 9.	18			
			5		10, 12, 10, 10, 18.	60			
18....		3			10, 10, 24	44	6	70	
			3		8, 9, 9	26			
19....	5				10, 9, 9, 12, 11.	51	14	159	
		1			10.	10			
			5		9, 10, 21, 17, 11.	68			
			3		10, 11, 9.	30			
21. ...		3			11, 9, 10	30	1	92	
			1		12	12			
			5		9, 12, 10, 11, 8.	50			
22....	1				12.	12	8	94	
		4			21, 9, 9, 10	49			
			2		11, 9.	20			
			1		13.	13			
23....		5			11, 9, 20, 12, 10.	62	8	109	
			2		28, 10.	38			
			1		9.	9			
24....	6				10, 10, 11, 20, 12, 19	82	18	310	
		4			10, 10, 10, 10.	40			
			6		7, 9, 9, 23, 10, 9	67			
			2		10, 11.	21			
25....	1				11.	11	13	143	
		3			26, 12, 9	47			
			9		9, 11, 9, 8, 9, 9, 11, 8, 11.	85			
26....	11				11, 10, 10, 9, 9, 10, 10, 9,	107	31	317	
					10, 11, 8.				
		8			14, 10, 8, 9, 8, 20, 10,				88
			9		9.				
					12, 8, 10, 11, 10, 9, 9,	93			
					15, 9.				
			3		10, 10, 9	29			
	30	38	41	22			131	1454	

STATEMENT OF SALMON FISHING on River Godbout, Season of 1869,
(Continued.)

DATE.	A. Gilmour, Ottawa.	J. Gilmour, Glasgow.	J. Gilmour, Quebec.	D. Law, Montreal.		Weight Daily.	No. of Fish.	Total Weight.
June 26 ...	30	38	41	22			131	1454
28.....	8	6	<i>Left</i>	3	12,11,11 11,11,11,9,8. 12,9,10,10,13,9. 10, 10, 10	84 63 30	17	177
29.....	11	8		6	10,12,9,9,10,10,9,10 10, 9, 13, 9, 6, 8, 8,9,9, 10, 8	79 99	25	249
30.....	10	20		5	12, 11, 13, 9, 11,12,11, 11, 7 23,17,15,10,10,10,9,7, 10,10,18,14,14,10,10 11,7,7,8,8	107 228	35	391
July 1.....	3	5		7	10, 11, 12 9, 12, 8, 12, 10 17, 10, 10, 9, 9, 9, 9	33 51 73	15	157
2.....	10	8	<i>Arri- ved.</i>	3	22,20,11,9,9,13,12,12, 10, 10 13, 8,10,11,11,12,10,11 8, 9 9, 9, 14	128 86 17 32	23	263
3.....	1	7		7	10 11, 11, 11, 10, 10, 9, 7 9, 9, 9, 10, 10, 12, 11, 14 17, 9, 7, 8,8,9,9,8,9,11, 10,9,10,7	10 69 70 131	29	280
5.....	10	23		1	8,9,10,11,10,9,10,8,8,9 24, 21, 19,12,12,11,11, 11,10,10,10,10,10,10 10,10,9,9,9,9,8,8, 8, 9, 9, 10, 10, 13	92 262	40	421
6.....	16	7		8	24,22,18,13,8,6,9,7,9,9 9,9,9,10,10,11 13,10,9,11,11,10,7 12, 11, 10, 10, 11, 11, 12, 11	183 71 88	31	342
	99	122	64	61			316	3734

369.

total
light.

27

133

70

159

92

94

109

210

143

317

1454

STATEMENT OF SALMON FISHING on River Godbout, Season of 1869,
(Continued.)

DATE.	A. Gilmour, Ottawa.	J. Gilmour, Glasgow.	A. Gilmour, Quebec.	D. Law, Montreal.	Weight Daily.	No. of Fish.	Total Weight.
July 6.....	99	122	64	61	346	3734
7.....	6	3	11		9, 9, 9, 11, 10, 11... 12, 12, 10... 27, 22, 17, 12, 10, 10, 9, 9, 9, 8, 6.....	59 34 139	20 232
8.....	4	5	5	12	12, 11, 10, 10... 10, 10, 9 8, 9... 12, 10, 10, 11, 10... 9, 8, 10, 10, 11, 9, 9, 10, 8, 10, 11, 8.....	43 46 53 113	26 255
9.....	2	14	2	3	10, 10... 11, 9, 11, 12, 10, 10, 9, 8, 9, 9, 9, 10, 10, 11... 12, 10... 8, 8, 10.....	20 138 22 26	21 206
10.....	12	3	6	2	22, 9, 7, 10, 8, 8, 10, 10, 10, 11, 11, 12... 7, 9, 12... 8, 11, 12, 9, 11, 10... 9, 10.....	128 28 61 19	23 236
12.....	1	5	11		10... 10, 12, 11, 10, 14... 10, 13, 8, 16, 10, 12, 10, 9, 7, 11, 8.....	10 57 114	17 181
13.....	1	1	4	2	14... 9... 13, 11, 10, 10... 10, 8.....	14 9 44 18	8 85
14.....		5	7	2	10, 9, 8, 23, 19... 10, 10, 11, 10, 9, 9, 10 10, 10.....	69 69 20	14 158
15.....	14	3	5		11, 11, 11, 10, 9, 9, 10, 7, 10, 10, 10, 10, 9, 8... 11, 10, 8... 11, 8, 8, 9, 10.....	135 29 46	22 210
16.....			10		19, 13, 9, 10, 6, 8, 10, 12, 12, 10.....	109	10 109
	139	161	125	82		507	5406

STATEMENT OF SALMON FISHING on River Godbout, Season of 1869,
(Continued.)

DATE.	A. Gilmour, Ottawa.	J. Gilmour, Glasgow.	A. Gilmour, Quebec.	D. Law, Montreal.		Weight Daily.	No. of Fish.	Total Weight.
July 16. . . .	139	161	125	82	507	5406
17.		3	10, 11, 12	33		
				5	6, 14, 12, 10, 12....	54	8	87
	139	164	125	87			515	5493

515 Salmon, average $10\frac{66}{100}$ lbs. = 5490 lbs.

STATEMENT OF SALMON FISHING on River Godbout, Season of 1870.

DATE.	Dr. Campbell.	A. Urquhart.	A. Gilmonr.	D. Law.	C. F. Smith.	Weight Daily.	No. of Fish.	Total Weight.
June 16..	5	...	2	23, 12, 12, 12, 11 10, 11	7	91
17..	2	2	4	1	...	11, 11 20, 10 10, 11, 12, 12 11	9	108
18..	6	4	8	11, 12, 10, 9, 10, 11. 8, 10, 8, 12. 7, 10, 13, 13, 12, 8, } 10, 7	18	181
20..	3	10	3	7	...	8, 9, 16. 10, 16, 9, 20, 10, 10, } 12, 9, 12, 9 9, 11, 11 8, 9, 10, 11, 12, 12, 13	23	256
21..	5	...	7	4	...	18, 10, 9, 11, 9 27, 10, 9, 11, 9, 9, 8 11, 11, 9, 8	16	179
22..	1	1	1	5	...	10. 12. 18. 19, 13, 12, 9, 6	8	99
23..	10	2	1	4	...	19, 19, 18, 10, 10, 11 } 10, 11, 12, 9 11, 10 11 10, 11, 12, 12	17	206
24..	2	5	7	5	...	11, 9 19, 15, 9, 8, 8 11, 10, 8, 11, 8, 8, 9 20, 14, 11, 10, 10	19	209
25..	1	2	16	4	...	9. 11, 13 17, 19, 21, 14, 10, 11, } 10, 9, 9, 12, 10, 11, } 10, 9, 10, 9 11, 11, 11, 10	23	267
35	26	49	30				140	1596

STATEMENT OF SALMON FISHING on River Godbout, Season of 1870,
(Continued.)

	DATE.	Dr. Campbell	A. Urquhart	A. Gilmour.	D. Law.	C. F. Smith.	Weight Daily.	No. of Fish.	Total Weight.	
91	June 25..	35	26	49	30			140	1596	
	27..	4	4	2	13		8, 9, 10, 11. } 7, 8, 9, 10. } 10, 11. } 25, 23, 12, 9, 10, 10, 8, 9 } 12, 9, 10, 11, 8. }	38 34 21 156	23	249
108										
181	28..	15					21, 19, 11, 8, 12, 9, 9, 8, } 11, 11, 9, 9, 9, 10, 10. }	166		
			1	3	3		10. } 10, 10, 9. } 9, 20, 11. }	10 29 40	22	245
256	29..	3	8	2	2		14, 11, 11. } 9, 9, 9, 9, 10, 11, 12, 12. ... }	36 81 19		
							9, 10. } 10, 11. }	21	15	157
179	30..	6	5	13	7		10, 10, 10, 11, 12, 13. } 15, 14, 12, 11, 9. } 9, 8, 10, 10, 9, 9, 10, 8, } 11, 9, 11, 12, 14. }	66 61 130		
99	July 1..	4	4	4	6		11, 9, 10, 13, 12, 10, 8. }	73	31	330
							11, 12, 10, 12. } 10, 11, 12, 9. } 10, 10, 9, 12. }	45 42 41		
206	2..	6	2	5	5		8, 9, 10, 10, 10, 13. }	60	18	188
							9, 9, 10, 11, 12, 12. } 9, 10. } 10, 10, 10, 12, 12. }	63 19 54		
209	4..	3	9	2	4		11, 12, 13, 13, 8. }	57	18	193
							10, 10, 11. } 21, 17, 13, 10, 9, 9, 11, 8, 7. }	31 105		
							23, 12. } 11, 11, 11, 10. }	35 43	18	214
267	5..	11					21, 13, 14, 10, 11, 12, 11 } 9, 10, 9, 8. }	128		
			1	9	1		14. } 9, 9, 10, 10, 10, 10, 11, } 11, 11. }	14 91		
							10. }	10	22	243
1596		87	60	89	71				307	3415

STATEMENT OF SALMON FISHING on River Godbout, Season of 1870,
(Continued.)

DATE.	Dr. Campbell.	A. Urquhart.	A. Gilmore.	D. Iaw.	C. F. Smith.	Weight Daily.	No. of Fish.	Total Weight.
July 5	87	60	89	71	307	3415
6	2	1	2	9	8, 10	18	14	138
					9	9		
					10, 11	21		
					9, 10, 9, 10, 11, 8, 10, (12, 11)	90		
7	8			1	7, 7, 8, 9, 10, 10, 11	73	12	122
					17	17		
					3 9, 11, 12	32		
8		5		5	11, 11, 11, 12, 12	57	12	129
					11, 10, 11, 8, 8	48		
					2 11, 13	24		
9	3	1		2	10, 12, 9	31	9	89
					11	11		
					10, 9	19		
					3 11, 9, 8	28		
11	2	4		4	9, 11	20	11	113
					9, 9, 10, 10	38		
					9, 10 11, 11	41		
					1 14	14		
12	6			1	8, 8, 10, 11, 11, 11	59	8	81
					14	14		
					8 8	8		
13	1	7		3	11	11	12	133
					18, 10, 11, 10, 11, 16, 9	85		
					10, 10, 10	30		
					1 7	7		
14	1	1			10	10	4	39
					8	8		
					2 10, 11	21		
15		2		5	9, 10	19	8	73
					8, 8, 8, 10, 10	44		
					1 10	10		
16	1				7	7	2	17
					1 10	10		
	111	81	91	101	15		399	4349

399 Salmon average $10\frac{2}{3}$ lbs. = 4349 lbs.

STATEMENT OF SALMON FISHING on River Godbout, Season of 1871.

Total Weight.	DATE.	A. Gilmour, Ottawa.	D. Law, Montreal.	A. Cross, Montreal.	D. Gilmour, Quebec.	A. T. Paterson, Montreal.	Weight Daily.	No. of Fish.	Total Weight.
3415	June 15..				5		9, 10, 11, 10, 9	5	49
	16..			1			9	1	9
138	17..		7	2			10, 10, 10, 9, 9, 3, 7	10	84
					1		7, 8		
							11		
122	19..	7					8, 10, 16, 19, 9, 9, 6	23	252
			7				10, 10, 9, 9, 10, 18, 12		
				4			23, 9, 10, 10		
					5		7, 9, 10, 11, 8		
129	20..	1					14	15	167
			3				9, 18, 9		
				4			9, 13, 8, 10		
					7		8, 8, 8, 11, 14, 20, 8		
89	21..	2					18, 9	14	150
			3				17, 9, 8		
				6			8, 10, 10, 16, 13, 11		
					3		9, 10, 11		
113	22..	3					8, 10, 12	11	152
			2				32, 22		
					6		9, 10, 10, 21, 9, 9		
81	23..	4					20, 11, 10, 9	20	234
			6				5, 8, 19, 12, 10, 11		
				4			10, 22, 10, 10		
					6		10, 11, 11, 11, 12, 12		
133	24..	6					15, 9, 12, 8, 17, 10	29	356
			8				20, 11, 9, 9, 10, 21, 9, 8		
				7			10, 10, 12, 22, 18, 16, 9		
					8		20, 11, 9, 9, 9, 10, 12, 11		
39	26..	6					20, 10, 11, 9, 10, 10	23	254
			7				20, 13, 12, 12, 9, 11, 12		
				6			10, 10, 10, 11, 7, 8		
73					4		7, 10, 11, 11		
	27..	4					7, 7, 8, 10	16	167
			2				11, 13		
				9			7, 8, 10, 11, 10, 11, 12, 11, 22		
17							9		
4349					1				
		33	45	43	46			167	1883

STATEMENT OF SALMON FISHING ON RIVER GODBOUT, SEASON OF 1871,
(Continued.)

DATE.	A. Gilmour, Ottawa.	D. Law, Montreal.	A. Cross, Montreal.	D. Gilmour, Quebec.	A. T. Paterson, Montreal.	Weight Daily.	No. of Fish.	Total Weight.
June 27..	33	45	43	46	167	1883
28..	10	9, 12, 15, 17, 20, 22, 18, } 12, 9, 10 } 19, 25, 14, 12, 12, 11 } 12 } 18, 11, 10, 9, 14. }	144 93 12 62	22	311
29..	4	7, 21, 9, 26. } 5, 8, 9, 11, 12, 8, 20. } 11, 11, 17, 13. } 10, 10, 11, 11, 12 }	63 73 52 54	20	242
30..	10	10, 10, 11, 9, 10, 11, 11, } 11, 11, 10 } 9, 10 } 13, 11 } 19, 12, 13, 11. }	104 19 24 55	18	202
July 1..	7	15, 11, 11, 10, 10, 9, 9. } 13, 10, 12, 11, 13, 13, 10. } 13, 12, 8, 8. }	75 82 41	18	198
2..	1	11 } 24, 19, 16, 12, 13, 10, } 9, 10 } 8, 11, 17, 13, 11, 11, 11, } 11, 9, 20, 11, 9. }	11 113 142	21	266
4..	2	10, 11 } 12, 13, 8, 8, 10, 11 } 22, 19, 11, 11, 11, 10, 10 } 8, 7 }	21 62 109	17	192
5..	9	9, 10, 11, 15, 10, 9, 11, } 13, 9 } 16, 18, 12, 10, 11, 14, 13 } 10, 9, 6, 18, 17. } 10, 11, 10, 20, 9. }	97 154 60	26	311
6..	4	9, 10, 11, 12. } 8, 8, 9. } 9, 9, 9, 13, 13, 11, 10, 12 } 13, 10, 10 } 6, 9, 11, 15, 18, 10 }	42 25 119 69	24	255
	80	96	54	97	6		333	3860

STATEMENT OF SALMON FISHING on River Godbout, Season of 1871,
(Continued.)

Total Weight.	DATE.	A. Gilmour, Ottawa.	D. Lav. Montreal.	A. Cross, Montreal.	D. Gilmour, Quebec.	A. T. Paterson, Montreal.	Weight Daily.	No. of Fish.	Total Weight.
1883	July 6..	80	96	54	97	6		333	3860
	7..	5	3		10		12,13,13 11,10. } 9,9,17 } 19,12,11,9,10,8,9,9. } 9, 10 } 19, 17, 10,10,10,7,9. } 16,11,9,8,9,10,8,8 } 8,18,9,12,10,7,8. }	59 35 106	
311						22		40	433
242	8..	6	3		13 <u>Left.</u>	9	14,8,10,11,20,11 } 11,11,10 } 18,15,12,12,15,15,10 } 8,10,8,8,7,7 } 15,13,12,11,11,11,10 } 9, 8 }	74 32 145 100	31
202	10..	1	4			8	11 } 17,9,8,11 } 12, 11,10,9,9,9,25,23.. }	11 45 107	13
198	11..	9				6	7,9,9,9,9,9,11,10,10 } 11,10,10,9,9,7 }	83 56	15
266	12..		4			18	11,11,12,12. } 8, 10,8,10,9,8,11,11, } 13,7,12,7,7,8,8,22 } 11,13. }	46 183	22
192	13..	1	19			4	10 } 11, 11, 9,10,10,10,7. } 10, 9, 11,12,10,10, } 6,9,9,11,17,16 } 11,10,9,8. }	10 198 38	24
311	14..					20	12, 12, 11,10,9,7,10, } 10, 10,9,10,11,9,8, } 9,8,10,19,18,8 }	210	20
255	15..		11				10, 9, 9,9,13,7,8,8,9, } 20, 10 }	112	11
3860		102	140	54	120	93		509	5743

509 salmon, average $11\frac{2}{100}$ lbs., = 5741.

STATEMENT OF SALMON FISHING on River Godbout, Season of 1872.

DATE.	A. Gilmour, Ottawa.	D. Law, Montreal.	T. B. Meigs, Jersey City.	Capt. Dick, Toronto.		Weight Daily.	No. of Fish	Total Weight.
June 20..	3	2			10, 10, 17.	37	5	69
					10, 22.	32		
21..			2		12, 8.	20	2	20
22..	4	1	1		8, 9, 10, 16.	43	6	64
					11.	11		
24..	5	11	7		10.	10	23	251
					20, 10, 10, 8, 8.	56		
					22, 15, 10, 11, 9, 7, 20, 9 } 9, 7, 8. }	127		
25..	2	2	5		11, 10, 10, 10, 9, 10, 8.	68	9	91
					4, 12.	16		
26..	12	5	2		8, 12.	20	19	206
					8, 8, 10, 19, 10.	55		
					20, 19, 9, 8, 10, 9, 9, 8, 9 } 11, 12, 12. }	136		
27..	1	14	2		10, 11, 9, 9, 9.	48	17	196
					11, 11.	22		
					11.	11		
28..	10	6	12		9, 9, 9, 10, 10, 11, 18, 19. } 8, 10, 10, 11, 12, 18. . }	164	28	322
					10, 11.	21		
					17, 8, 11, 9, 10, 12, } 16, 10, 10, 17. }	120		
					9, 10, 22, 13, 10, 11. } 11, 12, 13, 12, 8, 10, 10, } 15, 12, 7, 8, 9. }	75		
29..	4	1			28 in Upper Pool	127	5	52
					11, 11, 10, 9.	41		
July 1..	5	10	1		11.	11	12	142
					15, 12, 11, 11, 7, 18, 10, 10. } 16, 11, 10. }	131		
July 1..	5	10	2	Left	9, 9, 10, 17, 13.	58	17	172
					10, 12, 12, 9, 9, 10, 7, 8. } 11, 10. }	98		
	46	63	34				148	1585

STATEMENT OF SALMON FISHING on River Godbout, Season of 1872,
(Continued.)

DATE.	A. Gilmour.	D. Law.	T. B. Meigs.	Capt. Dick.	Weight Daily.	No. of Fish.	Total Weight.
July 1..	46	63	34	143	1585
2..	3	9, 10, 11.	30	6	58
	3	9, 9, 10.	28		
3..	6	9, 10, 16, 10, 9, 10.	64	17	174
	11	19, 9, 10, 11, 9, 6, 9, 10, (10, 5, 12.)	110		
4..	1	9.	9	5	52
	4	13, 11, 10, 9.	43		
5..	3	8, 10, 19.	37	14	169
	11	9, 14, 10, 11, 12, 17, 10, (10, 9, 10, 26.)	132		
6..	8	8, 8, 8, 9, 10, 10, 10, 10 ...	73	13	121
	5	8, 9, 10, 10, 11.	48		
8..	1	11.	11	14	127
	2	11, 9.	20		
	11	18, 10, 8, 9, 7, 9, 9, 8, 9.	96		
9..	5 24, 8, 9, 9, 10.	60	5	60
	68	99	34	16	217	2346

217 salmon, average $10\frac{81}{100}$ lbs., = 2346 lbs.

STATEMENT OF SALMON FISHING on River Godbout, Season of 1873.

DATE.	A. Gilmour, Ottawa.	A. Cross, Montreal.	R. Muir, Montreal.	G. Denholm, Montreal.	Lord Dufferin & Countess.	Weight Daily.	No. of Fish.	Total Weight.
June 19.	3				13,19,23	55		
		3			9,12,13	34	6	89
20.	2				11, 11	22		
		4			11,11,11,22	55		
			1		11	11	7	88
21.	3				13,10,12	35		
		1			13	13	4	48
23.	3				13,8,8	29		
			2		10, 9	19	5	48
24.		5			19,14,12,12,11	68		
			1		11	11	6	79
25.		2			12, 18	30	2	30
26.					3	31	3	31
27.					4	40	4	40
28.	1				12	12		
		3			11,11,10	32		
			5		12,11,24,10,9	66	9	110
30.	25				12,12,12,12,11,11,11 11,11,11,11,11,11, 11, 11, 10,9,9,9,9, 13,13,8,8,12	269	25	269
July 1.		7			13,13,11,11,11,17,8	84	7	84
2.			1		10	10	1	10
3.	5				12,12,10,9,11	54	5	54
4.		2			11, 11	21		
			1		9	9	3	30
5.			2		10, 8	18		
	1				11	11		
		1			7	7	4	36
7.	6				9,9,9,10,11,13	61		
				1	10	10	7	71
	49	28	12	2	7		98	1117

STATEMENT OF SALMON FISHING ON RIVER GODBOUT, SEASON OF 1873,
(Continued.)

DATE.	A. Gilmour.	A. Cross.	R. Muir.	G. Denholm.	Lord Dufferin & Countess.	Weight Daily.	No. of Fish.	Total Weight.	
July 7..	49	28	12	2	7	98	1117	
8..	10	8, 12, 10, 14, 12, 11, 11, } 11, 9, 9 }	107	107	
9..	3 ₂	22, 10, 10 9, 9 8 8 8 8 10 10 10	42 18 8	68	
10..	1	8 8 10 10	4	36
11..	8	12, 8, 10, 12, 11, 11, 12, 10	86	8	86
12..	1	9.....	9	1	9
Omitted June 30..	5	19, 14, 12, 12, 11.	68	5	68
	50	55	16	4	7			132	1491
		9	4	2		Grilse.			

132 Salmon, average $11\frac{2}{3}$ lbs. = 1491.

STATEMENT OF SALMON FISHING on River Godbout, Season of 1874.

DATE.	A. Gilmoor, Ottawa.	D. Law, Montreal.	Rev. D. McG. reid Ottawa.	R. N. Shepherd, Montreal.	Weight Daily.	No. of Fish.	Total Weight.	
June 26....	5	5	1	2	13,11,11,9,10.	54	13	126
					8,8,9,9,10.	44		
					9.....	9		
					11, 8	19		
27....	5	12	3	4	7,12,10,11,12.	52	24	265
					9, 9,9,10,11,13,9,11, } 15,9,12,15.....	132		
					13,8,9	30		
					10,11,19,11.....	51		
29....	4	10	5	7	7,9,10,10.....	36	36	269
					10,11,11,12,10,12,10 } 9,9,9	103		
					11,10,10,9,8.....	48		
					18,14,13,10,7,9,11....	82		
30....	3	1			8,10,11	29	4	41
					12.....	12		
July 1....	7	13	7	8	13,11,9,11,11,16,12... } 10,10,10,10,10,15,9, } 10,11,12,12,12,10. }	83	35	408
					18,10,10,8,8,19,12....	85		
					19,10,11,13,13,11,12 } 10.....	99		
					10,11,12,13,14,12,9, } 11,10,10,10,10,9... }	140		
2....	13	11	10	6	10,11,12,13,9,9,9,10 } 10,12,13	118	40	452
					18, 16, 10,7,6,23,12, } 10,10,10.....	122		
					25,11,9,7,10,10	72		
					9,10,10,10,11,12,12, } 12,12,13,13,8,10,11 }	153		
3....	14		7		8,10,11,12,9,9,9.....	68	21	221
4....	12	17	9	7	21,20,12,10,10,23 } 21,14,14,8,11. }	174	45	523
					20, 12,12,12,10,11,8,7, } 9,8,14,10,9,12,10,10,10 }	184		
					8, 9, 10,10,10,11,10, } 12, 11	91		
					9,11,13,8,10,10,13....	74		
	46	85	43	34		208	2305	

STATEMENT OF SALMON FISHING on River Godbout, Season of 1874,
(Continued.)

DATE.	A. Gilmore, Ottawa.	D. Law, Montreal.	Rev. P. M. Gordon, Ottawa.	R. W. Shepherd, Montreal.	Weight Daily.	No. of Fish.	Total Weight.
July 4.....	46	85	43	34	208	2305
6.....	8	24			11, 10, 10, 12, 10, 13, 8, 12 22, 23, 9, 6, 8, 14, 11, 11 27, 17, 29, 11, 12, 8, 20, 11, 12, 12, 11, 16, 12, 12, 11, 11.....	86 336	
			2		10, 11.....	21	
			2		9, 9.....	18	36
			30		9, 7, 11, 8, 18, 15, 12, 16 9, 11, 13, 13, 11, 10, 7, 10, 9, 3, 9, 10.....	211	20
	54	109	65	36		264	2977
					Comeau.....	9	90
						273	2067

273 Salmon average $11\frac{23}{100}$ lbs. = 3066 lbs.

See Comeau's catch for 1874 next page.

STATEMENT OF N. A. COMEAU'S FISHING ON RIVER GODROUT, Season of 1874.

DATE.	N. A. Comeau.		Weight Daily.	No. of Fish.	Total Weight.
July 8.....	7	12,13,14,9,10,6,16.....	80		
9.....	57	10,16,9,18,14,11,9,10,11,9,11,11,10, 10,10,9,10,10,14,8,11,9,9,9,11,12, 8,10,11,12,8,11,11,8,10,12,11,11, 16,8,12,8,11,12,18,13,10,9,9,17,24 20,9,11,10,9,10.....	634		
10.....	25	9, 9, 10, 14, 21, 9, 9, 8, 11, 11, 9, 17, 9, 10, 16, 23, 7, 11, 7, 10, 9, 11, 8, 8, 14.....	282		
11.....	34	10, 11, 10, 9, 11, 9, 10, 11, 11, 11, 11, 11, 11, 12, 8, 10, 10, 29, 13, 9, 8, 11, 11, 11, 11, 11, 10, 8, 9, 11, 10, 9, 11, 12.....	361		
13.....	40	11, 8, 13, 9, 8, 9, 19, 10, 12, 11, 14, 11, 7, 10 9, 15, 9, 14, 10, 8, 12, 11, 9, 11, 9, 11, 12, 10, 8, 12, 11, 12, 18, 11, 12, 11, 11, 11, 9, 10.....	438		
14.....	25	7, 9, 8, 10, 9, 10, 10, 11, 12, 8, 11, 9, 13, 10, 10, 14, 12, 13, 11, 9, 11, 10, 9, 8, 9.....	253		
15.....	16	11, 11, 9, 15, 10, 10, 10, 9, 11, 11, 12, 11, 12 9, 11, 10.....	172		
16.....	37	13, 8, 10, 13, 11, 10, 12, 13, 12, 10, 10, 7, 12 20, 8, 9, 11, 11, 12, 10, 10, 8, 8, 10, 9, 13 9, 9, 9, 12, 13, 11, 10, 12, 11, 9, 10.....	394		
17.....	16	10, 11, 12, 12, 9, 25, 10, 11, 10, 13, 10, 13, 8 9, 11, 9.....	183		
18.....	28	9, 10, 10, 11, 10, 8, 11, 12, 10, 8, 11, 12, 11, 9, 9, 14, 10, 8, 10, 11, 10, 10, 10, 11, 10, 11, 11, 9.....	286		
20.....	27	10, 11, 13, 11, 10, 8, 9, 9, 11, 7, 10, 11, 10, 11, 9, 10, 9, 12, 11, 11, 12, 11, 9, 9, 9, 10, 10.....	273		
21.....	13	12, 12, 11, 11, 11, 9, 10, 7, 7, 8, 7, 10, 9.....	124		
22.....	20	10, 10, 12, 8, 8, 9, 12, 9, 7, 9, 10, 8, 12, 12, 8, 12, 12, 8, 10, 12.....	198		
23.....	6	10, 9, 11, 11, 12, 10.....	63		
24.....	3	10, 10, 10.....	30		
27.....	3	12, 12, 9.....	33		
28.....	2	10, 9.....	19		
July 31.....	1	9.....	9		
	360		3832	360	3832
	5	Grills, average 3½ lbs.....			19

360 Salmon average $10\frac{64}{100}$ lbs. = 3830 lbs.

18 days fishing caught 360 Salmon, or an average of 20 each day during the whole time.

STATEMENT OF SALMON FISHING ON RIVER GODBOUT, SEASON OF 1875.

DATE.	D. J. Lav. Montreal.	R. W. Shephard, Montreal.	Robt. Muir, Montreal.		Weight Daily.	No. of Fish.	Total Weight.		
June 28..	6	9, 11, 11, 10, 12, 11	64	22	262		
		4	12	10, 11, 10, 9	40				
				15, 16, 9, 9, 9, 9, 9, 18, 16, 20, 17, 11.	158				
29..	2	...	5	11, 12	23	8	95		
			1	9, 9, 9, 15, 19	61				
30..	20	8, 9, 10, 10, 10, 10, 11, 12, 13, 15, 15, 17, 17, 17, 18, 18, 19, 19, 20	280	24	324		
		3	1	10, 11, 12	33				
				11	11			11	
July 1..	7	...	1	11, 12, 10, 9, 9, 10, 12	73	16	155		
			8	8	8				
2..	4	...	5	7, 8, 9, 9, 9, 10, 11, 11	74	12	128		
			3	11, 11, 12, 9	43				
				10, 10, 11, 11, 12	54				
3..	7	...	3	8, 10, 13	31	13	148		
			3	7, 9, 11, 13, 16, 17, 18	91				
			3	8, 8, 10	26				
5..	5	...	3	10, 10, 11	31	15	156		
			7	7, 8, 10, 10, 12	47				
				11, 10, 9	30				
6..	9	...	8	12, 9, 7, 10, 10, 15, 16	79	22	223		
			5	10, 10, 11, 11, 12, 9, 10, 11, 13	97				
				8, 8, 8, 9, 10, 10, 12, 11	76				
7..	16	...	6	8, 9, 10, 13	50	23	235		
			1	8, 8, 9, 9, 9, 9, 10, 10, 10, 10, 10, 11, 12, 12, 14	163				
				9, 10, 10, 11, 11, 11	62				
8..	5	...	3	10	10	22	210		
			14	9, 9, 10, 10, 11	49				
				10, 8, 8	26				
10..	81	41	55	9, 10, 11, 11, 9, 8, 7, 10, 9, 10, 11, 10, 10	135	177	1936		
								MacNab, Molson and Party..	8
								Comeau.	4
	81	41	55		189		2057		

189 Salmon, average $10\frac{88}{100}$ lbs. = 2056 lbs.

STATEMENT OF SALMON FISHING on River Godbout, Season of 1876.

DATE.	A. Gilmore, Ottawa.	D. Law, Montreal.	R. W. Shephard, Montreal.	A. Demistowh, Montreal.	J. Manuel, Ottawa.	Weight Daily.	No. of Fish.	Total Weight.
June 19..	1			1		9 12	2	21
20..	2			1		24, 17 8	3	49
21..	1	2	1			23 10, 11 9	4	53
22..	1	3		2		26 9, 11, 16 9, 20	6	94
23..	2	4		6	1	20, 21 8, 8, 10, 16 25, 11, 2, 13, 21, 9 9	13	191
24..	3			2		19, 20, 29 8, 11 23	6	110
26..	2	10	6	4	2	11, 12 9, 11, 11, 18, 19, 19, 8, 1 10, 11 10, 10, 12, 16, 9, 12 10, 11, 15, 25 11, 14	24	294
27..	7	3		1	1	11, 11, 9, 12, 14, 11, 12 11, 11, 20 10 13	12	145
28..	1	1		1		11 11 16	3	38
29..	2	<i>Left</i>		3	2	14, 29 11, 12, 22 10, 18	7	116
30..	4			7	1	19, 13, 11, 12 16, 9, 11, 9, 9, 14, 22 13	12	158
	22	28	7	28	7		92	1269

STATEMENT OF SALMON FISHING ON RIVER GODBOUT, SEASON OF 1876,
(Continued.)

76.

tal
ght.

21

49

53

94

191

110

291

145

38

116

158

269

DATE.	A. Gilmour.	D. Law.	R.W. Shepherd, Montreal.	A. Beauséjour, Montreal.	J. Mannel, Ottawa.	C. F. Smith, Quebec.	Amerson, India.	Weight Daily.	No. of Fish.	Total Weight.
June 30.	22	28	7	28	7				92	1260
July 1.	5		2	1	1		11,11,11,11,9.	53		
							21,11,	32		
							13,12,20,10 . . .	55		
							9	9	12	149
3.	6			3	1		11,11,11,11,) 12,10,)	66		
							22,22,20,	64		
							12	12	10	142
4.				3	2		18,8,	26		
							10,11,12,	33		
			3				17,11,13,	41	8	100
5.	2		1	7			10,13,	23		
							19	19		
							20,18,18,18,) 10,10,9,)	103		
					5		24,22,11,11,9, . . .	77	15	222
6.	6		<i>Left</i>	6			12,10,12,12,) 9,13,)	68		
							11,11,11,9,) 16,17,)	75		
					1		19	19		
						1	9	9	14	171
7.	1			1			11	11		
					1		11	11		
						2	14	14		
							12,10	22		
						3	12,11,8,	31	8	89
8.					7		21,19,13,13,) 11,10,10, . . .)	97		
						2	12,9	21		
						2	24,10,	34	11	152
10.	2			8			14,10,	21		
							18,16,15,12,) 11,11,11,10)	104		
					4		14,12,9,12	47		
						1	9	9	15	181
	41	28	13	60	29	6	5		185	2478

STATEMENT OF SALMON FISHING on River Godbout, Season of 1876,
(Continued.)

DATE.	A. Gilmour.	D. Law.	R. W. Shephard, Montreal.	A. Dennistown, Montreal	J. Manuel, Ottawa.	C. F. Smith, Quebec.	Anderson, India.		Weight Daily.	No. of Fish.	Total Weight.
July 10.	44	28	13	60	29	6	5		185	2478
11.	6							24,10,11,11, } 9,9..... }	74		
					1			12.....	12		
								16.....	16	8	102
12.					2			12,13.....	25		
						2		12,12.....	24		
							3	13,17,10.....	40	7	89
13.					4			18,17,17,13 ..	65		
						2		11,10.....	21	6	86
14.					4			11,12,12,12 ..	47		
							1	12.....	12	5	59
15.	2							9,10.....	20	2	20
	52	28	13	60	40	10	10			213	2834
								N. A. Comeau.....		11	149
								C. McNab.....		3	34
										227	3017

227 Salmon, average $13\frac{28}{100}$ lbs. = 3017 lbs.

6 Grilse, weighing 26 lbs.

STATEMENT OF SALMON FISHING on River Godbout, Season of 1877.

DATE.	A. Gilmour, Ottawa.	C. F. Smith, Quebec.	J. Manuel, Ottawa.	Rev. D. M. G. Robt. Ottawa.	Judge Henry, Ottawa.	Col. Irwin, Kingston.	Weight Daily.	No. of Flsh.	Total Weight.
June 15.	1					18	18	1	18
16.	4	4	4			13, 11, 10, 14. 7, 9, 10, 11. 8, 10, 11, 19.	48 37 48	12	133
18.	11	5	3			13, 11, 10, 12, 8, 9, 12 } 13, 9, 9, 12. } 9, 9, 11, 12, 13. } 10, 10, 8	118 54 28	19	200
19.	1	10				12 7, 9, 10, 10, 10, 10, 12 } 13, 14, 20 } 9, 10, 10, 11, 11.	12 115 51	16	178
20.	6	1	8			9, 10, 11, 11, 11, 12 } 7 } 8, 9, 9, 10, 10, 10, 10, 22	64 7 88	15	159
21.	20	3	6			21, 20, 19, 12, 11, 11. } 9, 10, 10, 10, 10, 8, 8. } 9, 12, 10, 11, 9, 11, 12 } 11, 12, 13 } 9, 13, 12, 11, 23, 10	233 36 78	29	347
22.	4	2	20			12, 9, 11, 11 } 10, 11 } 19, 18, 10, 11, 9, 8, 10 } 12, 11, 10, 11, 10, 10. } 10, 11, 9, 9, 10, 10, 10 }	43 21 218	26	282
23.	5	2	12			11, 11, 11, 9, 9. } 18, 13 } 20, 19, 16, 11, 10, 10. } 12, 11, 10, 10, 10, 10. }	51 31 149	19	231
25.	13	12	5			19, 18, 13, 10, 9, 11. } 11, 9, 8, 10, 11, 9, 8. } 11, 11, 12, 11, 10, 11. } 11, 11, 11, 12, 13, 13. } 10, 10, 10, 10, 10. }	146 137 50	30	333
26.	15	15	8			22, 19, 14, 12, 11, 8, 10. } 10, 20, 11, 11, 11, 10. } 9, 10 } 11, 10, 9, 13, 10, 12, 7, 9 } 11, 11, 12, 13, 24, 14, 9. } 8, 9, 11, 11, 20, 14, 11, 9	188 175 93	38	456
	80	54	71					205	2337

Total
light.

2478

102

89

86

59

20
834
149
34
017

STATEMENT OF SALMON FISHING on River Godbout, Season of 1877,
(Continued.)

DATE.	A. Gibmour Ottawa.	C. F. Smith, Quebec.	J. Manuel, Ottawa.	Rev. H.M. Gordon Ottawa.	Judge Henry, Ottawa.	Col. Irwin, Kingsthn.	Weight Daily	No. of Fish.	Total Weight
June 26	80	54	74					205	2337
27.	4	7	5			11, 11, 9, 13.	44		
						19, 11, 10, 12, 10, 10, 11	83		
						22, 17, 12, 12, 8.	71	16	198
28.	12	<i>Left</i>	9			9, 9, 10, 10, 11, 11, 11 } 12, 12, 12, 14, 22.	143		
						10, 10, 10, 11, 11, 12. } 12, 12, 13	101	21	244
29.	3		14			13, 8, 9	30		
						11, 11, 11, 11, 11, 10, } 10, 10, 10, 9, 9, 9, 8.	139	17	169
30.	15		9			9, 9, 10, 10, 10, 10 } 11, 11, 12, 12, 12, } 13, 14, 17	170		
						10, 10, 11, 11, 12, 12, } 13, 13, 24	116	24	286
July 2.			17			13, 13, 10, 10, 23, 11, } 8, 11, 8, 11, 10, 10, } 11, 8, 8, 9, 8.	182	17	182
3.			10			14, 11, 11, 12, 10, 12, } 9, 12, 9, 9.	109	10	109
4.					1	11.	11	1	11
5.				4	6	26, 13, 10, 10.	59		
					5	12, 12, 11, 11, 9, 8.	63		
						15, 13, 12, 10, 9	59	15	181
6.				5	2	13, 20, 16, 10, 11.	70		
					4	9, 11	20		
						11, 13, 11, 10.	45	11	135
7.				2	5	10, 10	20		
					3	10, 11, 9, 12, 10.	52		
						12, 13, 9	34	10	106
9.				4	11	12, 13, 14, 16.	55		
					5	10, 11, 8, 10, 10, 14, } 7, 13, 10, 10, 12.	115		
						9, 11, 8, 11, 8	47	20	217
	114	61	135	15	24	18		367	4175

1877,
STATEMENT OF SALMON FISHING ON RIVER GODBOUR, SEASON OF 1877,
(Continued.)

Total Weight.	DATE.	A. Gilmour, Ottawa.	C. F. Smith, Quebec.	J. Manuel, Ottawa.	Rev. D. McFarlane, Ottawa.	Judge Henry, Ottawa.	Col. Irwin, Kingston.	Weight Daily.	No. of Fish.	Total Weight.	
3337	July 9.	114	61	135	15	24	18	367	4175	
	10.	3	5	9,9,9 9,12,13,10,11.	27 55		
198		3	12,10,9 13,10,9 10,10,8 12,11,10,9.....	31 32 28 42	11 102	
244	11.	3	3	4	11,11,8 11.....	30 11	4	41
169	12.	3	12,12,9	33	3	33
	13.	3
		114	61	144	18	32	26	395	4464	

395 salmon, average $11\frac{3}{10}$ lbs., = 4464.

3 Grilse—3, 4 and 5 lbs., average 4 lbs. = 12 lbs.

STATEMENT OF SALMON FISHING on River Godbout, Season of 1878.

DATE.	A. Gilmour, Ottawa.	D. Law, Montreal.	R. N. Shepherd, Montreal.	C. F. Smith, Quebec.	J. Manuel, Ottawa.	Hon. A. Mackenzie, Ottawa.	R. & D. M. Gordon Ottawa.	Weight Daily.	No. of Fish.	Total Weight.
June 11.		5			4		11, 13, 15, 11, 12, 17, 20, 10, 9. ...	62 56	9	118
12.	2	3	2	3	7		15, 14. 10, 21, 10. 12, 13. 19, 10, 9. 20, 17, 12, 11, } 11, 12, 7. ... }	29 41 25 38 90	17	223
13.		3		8	5		10, 14, 21. 11, 17, 17, 12 } 11, 10, 8, 7. ... }	45 93	16	196
14.		11	1	3	7		9, 8, 18, 20, 12, } 9, 8, 9, 7, 11, 10 } 7. 22, 11, 11. 12, 12, 11, 10, } 10, 20, 7. ... }	121 7 44 82	22	254
15.		5	6	1	1		10, 11, 11, 12, 23, } 11, 12, 11, 12, } 14, 8. }	67 68	13	154
17.	3	4		4	11		12, 12, 8. 10, 11, 11, 12. 11, 11, 12, 12. 8, 12, 25, 18, 9, } 12, 13, 10, } 10, 11, 11. ... }	33 44 46 138	22	260
18.	2	3		6	9		11, 11. 11, 13, 13. 11, 12, 12, 12, } 13, 9. }	22 37 69	20	244
19.		<i>Left</i>	<i>Left</i>	4	6		20, 17, 13, 13, } 11, 10, 11, } 11, 10. }	116	10	140
				4	6		12, 12, 12, 11. 25, 9, 11, 10, } 26, 12. }	47 93	10	140
	7	34	9	29	50				129	1589

STATEMENT OF SALMON FISHING ON RIVER GODBOUT, SEASON OF 1878,
(Continued.)

DATE.	A. Gilmour, Ottawa.	D. Law, Montreal.	R. N. Shephard, Montreal.	C. F. Smith, Quebec.	J. Manuel Ottawa.	Hon. A. McKenzie, Ottawa.	Rev. D. M. Gordon, Ottawa.	Weight Dully.	No. of Fish.	Total Weight.
June 19.	7	34	9	29	50				129	1589
20.	2			2	1		10, 10	20		
							10, 10	20		
							18.	18	7	77
							10, 9.	19		
21.				1	3		11	11		
							10, 10, 19.	39		
						3	10, 11, 8.	29	7	79
22.				2	3		17, 8.	25		
							11, 11, 9.	31	5	56
24.				6			11, 11, 10, 20,	75		
							12, 11. . . . }			
					11		10, 9, 9, 8, 12,		17	182
							10, 10, 10,			
				<i>Left</i>	<i>Left</i>		10, 10, 9. . . }			
25.					11		17, 13, 12, 13,	130	11	130
							12, 10, 11,			
							11, 11, 11, 9 }			
26.					9		21, 11, 12, 12, }	106	9	106
							8, 8, 12, 11, 11. }			
27.					10		12, 11, 11, 11. }			
							10, 10, 10,	124		
							11, 12, 26. . . }			
						10	11, 11, 10, 8, 9, }	98	20	222
							13, 9, 10, 9, 8 }			
28.					12		10, 10, 9, 7, 7, 8 }	124		
							17, 15, 11,			
							11, 9, 10. . . }			
						4	21, 10, 10, 10. . . }	51	16	175
29.					4		11, 12, 8, 10. . . }	41		
						6	20, 9, 10, 9, 8, 8. . }	64	10	105
July 1.					4		9, 11, 23, 8. . . . }	51	4	51
2.					2		9, 9. }	18		
							11. }	11	3	29
3.							10. }	10	1	10
	9	34	9	40	120	5	22		239	2811

239 salmon, average $11\frac{7}{10}$ lbs., = 2810 lbs.

STATEMENT OF SALMON FISHING on River Godbout, Season of 1879.

DATE.	A. Gilmour, Ottawa	Chas. Hallock, New York.	Robt. Muir, London, Eng.	C. F. Smith, Quebec.	John Manuel, Ottawa.	Fulton, Toronto.	G. Denholm, Montreal.	Weight Daily.	No. of Fish.	Total Weight.
June 14.	1			1			17.	17		
					2		12.	12		
							20, 20.	40	4	69
16.	3			4			18, 12, 11.	41		
					3		15, 14, 12, 10.	51		
							12, 15, 16	43	10	135
17.	1		1				19.	19		
			1				17.	17		
				1			15.	15		
					3		12, 10, 17	30	6	90
18.			1				21.	21		
				2			18, 10.	28		
					1		26.	26	4	75
		1							1	18
19.	2						18.			
			3				23, 11.	34		
				3			10, 13, 14.	37		
					1		17, 13, 12.	42		
							9.	9	9	122
20.			4				13, 14, 19, 16.	62		
				2			10, 20.	30		
					1		28.	28	7	120
21.			1				10.	10		
					4		23, 11, 12, 22.	68	5	78
23.	2						11, 10.	21		
				1			11.	11		
					5		19, 25, 21, 11, 20.	96	8	128
24.			1				9.	9		
				2			20, 23.	43		
					3		13, 11, 7.	31	6	83
25.	<i>Left</i>		<i>Left</i>							
			5				18, 19, 20, 11, 12.	80		
					4		20, 16, 18, 18.	72	9	152
26.	4						21, 19, 12, 13.	65		
			5				23, 12, 12, 11, 8.	66		
					5		18, 12, 18, 21, 28.	97	14	228
	11	3	21	16	22				83	1298

STATEMENT OF SALMON FISHING on River Godbout, Season of 1879,
(Continued.)

1879.

Total Weight.	DATE.	A. Gilmour, Ottawa.	Chas. Hallock New York.	R. Muir, London, Eng.	C. F. Smith, Quebec.	John Manuel, Ottawa.	Fulton, Toronto.	G. Denbohn, Montreal.	Weight Daily.	No. of Fish.	Total Weight.
	June 26.	11	3	21	16	32				83	1298
69	27.	4		1		4		23, 12, 13, 19. 17. 23, 18, 17, 10.	67 17 68	9	152
135	28.	2		5		8		10, 10. 10, 18, 15, 11, 10. 16, 18, 23, 11, 18, 13, 12, 13	24 64 124	15	212
90	30.			6		2		28, 23, 13, 12, } 10, 10, ... }	96 30 10	9	136
75						1		18, 12. 10.	30 10		
18	July 1.					2		23, 9. 9. 13.	32 9 13	4	54
	2.			1				13	13	1	13
122	3.			1		1		10 14 13	10 14 13	3	37
120	4.			2		9		9, 13. 12, 10, 11, 10, 10, 10, 18, 18, 17.	22 116	11	138
78	5.					3		10, 12, 11. 20	33 20	4	53
128	7.	2				14		16, 9. 23, 12, 12, 11, 9, 10, 12, 14, 14, 12, 11, 11 10, 9.	25 170	16	195
152	8.			4		2		11, 11, 10, 10. 12, 12	42 24	6	66
228	9.			1		3		12 11, 11, 10.	12 32	4	44
298		19	3	42	16	80	2	3		165	2398

STATEMENT OF SALMON FISHING on River Godbout, Season of 1879,
(Continued.)

DATE.	A. Gilmore, Ottawa.	Chas Hallock New York.	Robt. Muir, London, Eng.	C. F. Smith, Quebec.	John Manuel, Ottawa.	Fulton, Toronto.	G. Denholm, Montreal.		Weight Daily.	No. of Fish.	Total Weight.
July 9.	19	3	42	16	80	2	3			165	2398
								Nap. A. Comeau, Season.....	during	18	223
	19	3	42	16	80	2	3			183	2611

183 Salmon, average $14\frac{7}{10}$ lbs = 2611 lbs.

8 Grilse, average 4 lbs..... = 32

Caught by Judge Taschereau after the above party left
the river, in 6 days to 19th July, 40 salmon, average
 $11\frac{6}{10}$ lbs..... = 446

5 Grilse.

Weight of Judge Taschereau's grilse not given.

STATEMENT OF SALMON FISHING on River Godbout, Season of 1880.

DATE.	Ottawa. A. Gilmour.	D. Law, Montreal.	J. Manuel, Ottawa.	Rev D. M. Gordon Ottawa.	Weight Daily.	No. of Fish.	Total Weight.
June 14..		1		21	21		
			1	9	9	2	30
15..			3	21,12,18	51	3	51
17..			3	12,20,18	50	3	50
18..			1	28	28	1	28
19..		1		30	30		
			2	10, 27	37	3	67
21..		1		20	20		
			1	12	12	2	32
22..		6		27,26,25,20,9,8	115		
			4	11,20,20,11	71	10	186
23..		1		21	21		
			6	22,27,21,10,20,20	120	7	141
24..	1			14	14		
		5		21,14,12,10,8	65		
			2	18, 12	30	8	109
25..		1		10	10		
			5	26,24,22,21,8	101	6	111
26..		6		10,17,27,10,10,15	89		
			4	10,10,12,18	50	10	139
28..			13	24, 18, 12, 10,10,9,10,10, 10,11,10,11,10	155	13	155
29..		3		12,9,11	32		
			5	14,12,8,12,10	56	8	88
30		6		10,9,9,10,9,10	57		
			8	12,10,11,14,8,8,11,9	83	14	140
July 1..		2		12, 8	20		
			4	19,11,9,9	48	6	68
	1	33	58	4		96	1395

Total
Weight.

398

223

611

STATEMENT OF SALMON FISHING on River Godbout, Season of 1880,
(Continued.)

DATE.	A. Gilmour, Ottawa.	D. Law, Montreal.	J. Manuel, Ottawa.	Rev. D. M. Gordon Ottawa.		Weight Daily.	No. of Fish	Total Weight.	
July 1..	1	33	58	4		96	1395	
2..		11	4		23, 12, 12, 10, 9, 11, 10, 9, 8, 8, 7 13, 9, 12, 11 10	119 45 10	16	174	
3..		<i>Left</i>	4	2	11, 11, 9, 8. 12, 11	39 23	6	62	
5..			2	3	20, 7 9, 8, 7	27 24	5	51	
6..			1		10	10	1	10	
7..			5	1	8, 9, 10, 11, 6 10	44 10	6	54	
8..			6	2	10, 10, 10, 10, 10, 8 10, 10	58 20	8	78	
9..			2	3	8, 12 11, 11, 9	20 31	5	51	
10..			5	1	12, 12, 10, 10, 7 11	51 11	6	62	
	1	44	87	17			149	1937	
Nap. A. Comeau, during season								2	18
							151	1955	

151 Salmon, average $12\frac{3}{100}$ lbs. = 1955 lbs.

1 Grilse, 4 lbs. = 4 lbs.

15 Salmon caught by Judge Taschereau after party left the river;
weight not given.

STATEMENT OF SALMON FISHING on River Godbout, Season of 1881.

DATE.	A. Gilmour, Ottawa.	D. Law, Montreal.	J. Manuel, Ottawa.	Weight Daily.	No. of Fish.	Total Weight.
June 14		2		17, 18	2	35
15		1	2	26		
				16, 16	3	58
16		1	6	24		
				24, 22, 20, 19, 24, 29	7	162
17		4		20, 20, 23, 24	4	87
18		2	4	24, 16		
				10, 20, 27, 23	6	120
20		3	1	25, 20, 10		
				13	4	68
21			1	24	1	24
22		2	3	22, 15		
				10, 27, 12	5	86
23		0	0		0	0
		15	17		32	640

32 Salmon, average 20 lbs. = 640 lbs.

STATEMENT OF SALMON FISHING on River Godbout, Season of 1882.

DATE.	A. Gilmour, Ottawa.	D. Law, Montreal.	J. Manuel, Ottawa.	Fanon de La Grange, Paris.	Viscomte de Talbourt Paris.	Weight Daily.	No. of Fish.	Total Weight.
June 16.			1		10	19	1	10
17.	2		1		10, 10	20		
			5		13	13		
					12, 9, 11, 11, 21	64	8	97
19.		2			12, 16	28		
			2		22, 12	34	4	62
20.			3		14, 12, 11	37	3	37
21.		3			9, 9, 11	29		
			3		8, 12, 21	41	6	70
22.	1				10	10		
		4			8, 9, 9, 11	37		
			3		13, 11, 12	36	8	83
23.		3			10, 18, 8	36		
			4		15, 11, 10, 10	46	7	82
24.		2			14, 9	23		
			4		12, 12, 9, 11	41	6	67
26.		2			13, 8	21		
			2		10, 11	21	4	42
27.			3		11, 12, 9	32	3	32
July 4.					Left the river this date.			
5.	1				Returned to fish this [date.]	7		
			6		13, 11, 9, 7, 9, 10	59	7	66
6.			6		11, 11, 11, 11, 10, 9	63	6	63
7.			6		22, 10, 10, 10, 11, 12	75	6	75
8.			2		10, 11	21	2	21
10.			24		19, 11, 10, 10, 13, 7, 10, 10 17, 18, 10, 9, 8, 9, 11, 8, 11, 10, 9, 9, 11, 10, 11, 11	262	24	262
	4	17	74				95	1069

STATEMENT OF SALMON FISHING on River Godbout, Season of 1882,
(Continued.)

DATE.	A. Gilmour, Ottawa.	D. Law, Montreal.	J. Manuel, Ottawa.	Baron de La Grange Paris.	Vicomte de Talbour Paris.	Weight Daily.	No. of Fish.	Total Weight.
July 10.	4	17	74				95	1069
11.			30			23, 10, 11, 11, 10, 9, 11, 11, 13, 8, 9, 10, 11, 10, 10, 10, 11, 10, 12, 8, 11, 10, 7, 11, 11, 11, 9, 9, 11, 10	30	318
12.			8		11, 9, 9, 9, 8, 11, 11, 13		8	81
13.			23		12, 11, 10, 11, 10, 7, 11, 8, 10, 11, 8, 9, 10, 11, 8, 10, 10, 11, 8, 9, 8, 9, 11, ...		23	223
14.			10		13, 11, 11, 11, 12, 9, 9, 12, 10, 10	10	10	108
15.			13		18, 9, 8, 10, 11, 8, 9, 12, 13, 9, 10, 10, 10	13	13	137
17.			16		12, 11, 11, 11, 10, 11, 10, 12, 10, 9, 7, 11, 10, 11, 11, 10	16	16	167
18.			6		12, 9, 12, 9, 11, 11	6	6	64
	4	17	180			45	201	2167
			10		Grilse		10	45
	4	17	190				211	2212
211 Salmon, average 10 $\frac{78}{100}$ lbs.; 10 Grilse, average 4 $\frac{1}{2}$ lbs								
<i>Caught by Visitors during the Season :</i>								
Napoleon A. Comeau (guardian)—12, 9, 10, 8, 10, 10, 9, 8, 12, 11, 15, 18, 10, 10, 11, 11, 9, 11, 25, 18, 15, 12, 12, 10, 11, 10, 9, 10, 10, 8, 10, 12, 8, 8, 9, 11, 11, 11, 11							39	435
Alexander Dennistown, Montreal—12 13, 9							3	34
Baron de La Grange, Paris, France—13, 8, 10, 11							4	42
Vicomte de Talbrouet, " " —7, 10							2	17
Peter Macnaughton, Quebec—10, 9, 21, 8, 10, 10, 11, 12, 11, 8, 10, 10, 12, 9 (1 Grilse 5 lbs.)							14	151
62 Salmon average 10 $\frac{98}{100}$ lbs. 1 Grilse, " 5 lbs.								
<i>Forward</i>							273	2891

of 1882.
Total Weight.
10
97
62
37
70
83
82
67
42
22
66
63
75
21
262
069

STATEMENT OF SALMON FISHING on River Godbout, Season of 1882,
(Continued.)

DATE.	A. Gilmour, Ottawa.	D. Law, Montreal.	J. Manuel, Ottawa.	Visitors, see pre- ceding page.	RECAPITULATION.	Weight Daily.	No. of Fish.	Total Weight.
	4	17	186	62	Salmon.....		263	2846
			10	1	Grilse.....		11	50
	4	17	190	63			274	2896

263 Salmon average $10\frac{82}{100}$ lbs. = $2845\frac{66}{100}$ lbs.

11 Grilse, " $4\frac{55}{100}$ lbs. = $50\frac{65}{100}$ lbs.

Caught by Comte de Les Maison after the fishing party left the river: -
8 Salmon and 5 Grilse. Weight not known.

STATEMENT OF SALMON FISHING ON RIVER GODBOUT, SEASON OF 1883.

DATE.	A. Gilmour, Ottawa.	J. Mannel, Ottawa.	D. Law, Montreal.	Weight Daily.	No. of Fish.	Total Weight.
June 18.	1		10	10	2	19
		1	9	9		
19.			Rained all day, no fishing.			
20.		3	20,11,24	55	3	55
21.	1		24	24	4	67
		2	10, 9	19		
		1	24	24		
22.		3	11,17,21	49	3	49
23.		1	20	20	1	20
25.	1		12	12	4	52
		1	19	19		
		2	10, 11	21		
26.		4	22,9,23,12	66	4	66
27.		3	16,11,12	39	5	59
		2	9, 11	20		
28.		1	11	11	2	22
		1	11	11		
29.		1	23	23	2	31
		1	11	11		
30.		4	11,11,12,14	48	4	48
July 2.		4	13,10,21,22	66	7	109
		3	12,11,20	43		
3.		6	11,13,10,10,8,10	62	8	101
		2	23, 16	39		
4.		5	13,12,11,11,9	56	8	94
		3	13,13,12	38		
5.		3	12,12,10	31	5	60
		2	12, 14	26		
6.		2	14, 11	25	3	37
		1	12	12		
	3	44	18		65	892

of 1882,

river: -

STATEMENT OF SALMON FISHING on River Godbout, Season of 1883,
(Continued.)

DATE.	A. Gilmour, Ottawa.	J. Manuel, Ottawa.	D. Law, Montreal.		Weight Daily.	No. of Fish.	Total Weight.
July 6.	3	44	18		65	892
7.	7	19,23,14,21,12,10,11	110	7	110
9.	11	<i>Left</i> 20,18,13,18,21,11,9,19,12,11,9	164	11	164
10.	7	23,10,21,17,16,9,11.	107	7	107
11.	4	23,18,13,12	66	4	66
	3	73	18			94	1339

94 Salmon, average $14\frac{1}{4}$ lbs. = 1339 lbs.

STATEMENT OF 1883, (Continued.)

DATE.	Name of Parties.	Fish Caught.	No. of Fish.	Total Weight
July 11.	Regular fishing party during season	94	1339
	Caught by Guardian (N. A. Comeau) during the season	22, 21, 19, 12, 11, 19, 10, 18, 11, 13, 9, 11	12	176
	<i>Caught by visitors during the season:</i>			
	J. D. Gilmour, Quebec (from 20th to 25th July inclusive.)	12, 11, 11, 11, 10, 10, 8, 8, 11, 11, 10, 10, 11, 10, 10, 12, 15, 11, 20, 13, 11, 10, 12, 13, 10, 10, 9, 13, 11, 13, 11, 12, 11, 10, 20, 12, 11, 11, 10, 9, 10	42	475
	Mr. Hale, Quebec	1	1	12
	Judge Taschereau, Ottawa.	25	225
	Judge Taschereau	Grilse	12	227
	J. D. Gilmour	Grilse	9	48
			195	33
			195	2308

174 Salmon average $12\frac{1}{4}$ lbs. = 2227 lbs.

21 Grilse " $3\frac{1}{6}$ lbs.

STATEMENT OF SALMON FISHING on River Godbout, Season of 1884.

Total Weight.	DATE.	A. Gilmour Ottawa.	J. Manuel, Ottawa.	Jas. Law, Montreal.	Alex. Campbell, Toronto.		Weight Daily.	No. of Fish.	Total Weight.
892	June 19.		1			10	10	1	10
110	20.		5			10, 10, 10, 9, 7	46		
164				1		11	11	6	57
107	21.		4			9, 10, 11, 20	50	4	50
66	23.		2			10, 10	20		
1339				3		10, 11, 24	45		
	24.		4		1	10	10	6	75
	25.					17, 9, 10, 11	47	4	47
	26.		7			15, 12, 8, 8, 10, 8, 9	70		
				1		23	23		
				1		28	28	9	121
	26.		3		<i>Left</i>	13, 18, 20	51		
				8		19, 21, 9, 7, 9, 10, 7, 7	89	11	140
	27.		8			11, 7, 7, 20, 14, 10, 13, 8	90	8	90
	28.		2			11, 12	23		
				4		19, 12, 10, 7	48	6	71
	30.		8			10, 10, 11, 11, 13, 10, 10, 6	81		
				2		11, 9	20	10	101
	July 1.		3			9, 11, 12	32		
				3		13, 11, 11	35	6	67
	2.			3		15, 13, 7	35	3	35
	3.		5			11, 15, 13, 11, 8	58		
				3		10, 11, 6	27	8	85
	4.		6			11, 9, 13, 10, 9, 11	63		
				2		10, 11	21	8	84
	5.		8			10, 10, 11, 11, 12, 10, 11, 12	87		
				5		10, 10, 10, 10, 8	48	12	135
	7.		10			9, 9, 10, 29, 11, 9, 10, 10, 10, 12	119		
				3		11, 15, 10	36	13	155
	8.		2			10, 10	20		
				4		11, 11, 10, 10	42	6	62
			78	42	2			122	1385

STATEMENT OF SALMON FISHING on River Godbout, Season of 1884,
(Continued.)

DATE.	A. Gilmour, Ottawa	J. Marnel, Ottawa.	J. Lavé, Montreal.	A. Campbell, Toronto.	Weight Daily.	No. of Fish.	Total Weight.
July 8.		7 $\frac{1}{2}$	42	2		122	1385
9.		8	3		18, 8, 9, 11, 10, 10, 11, 9. 10, 12, 11.	86 33	11 119
10.		12	5		12, 9, 11, 10, 11, 10, 11, 12, 10, 14, 11, 9. 13, 10, 11, 10, 10.	133 54	17 187
11.		4	2		12, 11, 10, 9 13, 7.	42 20	6 62
12.		3	3		10, 11, 12. 9, 11, 11.	33 31	6 61
14.					Not fishing.		
15.		17			12, 11, 7, 10, 10, 11, 9, 8, 9, 7, 8 } 11, 12, 11, 10, 10, 10	166	17 166
16.		5	10		12, 11, 12, 8, 10. 14, 13, 10, 10, 10, 11, 9, 10, 12, 10	53 109	15 162
		127	65	2		194	2145
194 Salmon, average 11 ⁰⁶ = 2145.							
Caught by N. A. Comeau :							
19.					11, 11, 10, 13, 9, 10, 8, 9, 9.		
21.					18, 12, 11, 11, 10, 10, 9, 10, 9, 9, 8, 7, 9.		
22.					11, 11, 10, 10, 10, 9.		
25.					17, 13, 12, 13, 11, 10, 11, 10, 10, 10, 9, 9, 10, 9, 8, 10, 10, 8, 7.		
26.					13, 11, 10, 10, 9, 8, 8.		
28.					11, 10, 10, 9, 8, 8, 8.		
29.					10, 10, 8.		
30.					10, 9.		
Aug. 3.					10.		
31.					9.	68	0
68 Salmon average 10 lbs = 680							
3 Grilse, 3, 4, 4 lbs. = 11							
691							

STATEMENT OF SALMON FISHING ON RIVER GODBOUT, SEASON OF 1885.

DATE.	Ottawa. A. Gilmour.	J. Manuel, Ottawa.	Jas. J. W., Montreal.	Weight Daily.	No. of Fish.	Total Weight.
June 25.		5	17, 18, 19, 11, 13 1 12	78 12	6	90
26.		1	6 5 18, 18, 10, 20, 21	6 87	6	93
27.		1	10 2 10, 9.	10 19	3	29
29.		1	23 19 24, 18, 16, 10, 9, 9, 10, 10, 11, 17, 10, 10 11, 10, 16, 9, 8, 11, 10 6 24, 21, 10, 11, 9, 14.	23 229 89	26	341
30.		2	12, 9. 15 19, 8, 8, 20, 11, 10, 19, 19, 11, 9, 11, 8, 9, 10, 9.	21 181		
			14 21, 21, 18, 20, 17, 19, 21, 19, 18, 10, 10, 11, 9, 7.	221	31	423
July 1.		2	23, 10. 9 20, 19, 19, 11, 13, 12, 11, 11, 9. 6 18, 18, 12, 10, 15, 11.	33 125 84	17	242
2.		6	11, 10, 10, 10, 9, 22. 8 28, 19, 15, 10, 9, 10, 10, 11 5 22, 12, 10, 12, 23	72 112 79	19	263
3.		1	22 6 20, 13, 9, 9, 8, 26.	22 85	7	107
4.		5	22, 12, 12, 10, 9	65	5	65
6.		12	18, 15, 12, 10, 13, 10, 12, 9, 8, 9, 8, 6. 1 10	130 10	13	140
7.		2	15, 16. 5 27, 16, 12, 10, 8	31 73	7	104
8.		18	21, 20, 22, 17, 17, 15, 16, 14, 12, 12, 10, 10, 9, 10, 11, 9, 8, 8 1 11	241 11	19	252
9.		1	9 6 18, 18, 9, 12, 10, 10.	9 77	7	86
10.		16	20, 18, 16, 12, 17, 10, 9, 12, 12, 10, 9, 10, 9, 9, 10, 12 1 18	195 18	17	213
	12	112	50		183	2448

STATEMENT OF SALMON FISHING on River Godbout, Season of 1885,
(Continued.)

DATE.	A. Gilmore, Ottawa.	John Manuel, Ottawa.	Jas. Law, Montreal.	Weight Daily.	No. of Fish.	Total Weight.	
July 10.	12	112	59		183	2448	
11.		3		10, 12, 13.	35		
			9	10, 12, 12, 9, 10, 9, 8, 12, 10.	92	12	127
13.		13		18, 16, 19, 22, 19, 9, 10, 8, 10, 10, 9, 9, 11.	170		
			2	9, 10.	19	15	189
14.	1			10	10		
		10		18, 13, 12, 10, 9, 10, 9, 11, 12, 10	114		
			8	16, 12, 10, 10, 10, 10, 9, 8	85	19	209
15.		9		19, 15, 8, 8, 9, 7, 10, 9, 8.	93		
			5	10, 8, 9, 9, 11	47	14	140
16.		10		18, 12, 12, 9, 9, 8, 8, 8, 10, 10	104		
			7	17, 11, 10, 10, 10, 13, 9	80	17	184
17.		20		11, 9, 10, 7, 10, 11, 8, 8, 10, 10, 11, 9, 12 } 10, 7, 8, 9, 9, 7, 7 }	183		
			5	18, 9, 9, 9, 9	54	25	237
18.		3		10, 9, 9.	28		
			4	15, 14, 10, 8	47	7	75
20.		4		12, 9, 8, 8	37		
			1	10	10	5	47
21.		4		17, 12, 8, 7	44		
			5	7, 7, 8, 8, 10	40	9	84
	13	188	105			306	3740

303 Salmon, average $12\frac{2}{3}$ lbs. = 3740 lbs.
 2 Grilse, " 4 lbs., by J. Manuel 8 lbs.
 1 Grilse, " 4 lbs., by Jas. Law 4 lbs.
 Total number of fish caught 309, weighing 3752 lbs

STATEMENT OF SALMON FISHING on River Godbout, Season of 1886.

of 1885,
Total Weight.
2448
127
189
209
140
184
237
75
47
84
3740

DATE.	A. Gilmour, OTTAWA.	D. Law, Montreal.	Robt. Muir, Montreal.	J. Mammel, Ottawa.	Weight Daily.	No. of Fish	Total Weight.
June 21.		2		11, 10	21		
			2	20, 19	39		
				7 20,20,12,19,20,14,11	116	11	176
22.		4		21,12,14,11	58		
			3	17,11,8	36		
			1	12	12	8	106
23.		2		23, 17	40		
			3	10,10,11	31		
			3	23,11,21	55	8	126
24.		2		11, 11	22		
			4	20,17,11,11	59		
				20 19, 11, 10,10,10,9,20,16,18, } 20,18,12,12,10,8,20,10,9, } 14, 9	265	26	346
25.		3		10,20,11	41		
			13	21,19,17,17,19,20,19,14,10, } 10,12,10,8	196		
			3	21,12,12	45	19	282
26.		15		18,19,17,15,19,17,16,11,11, } 12,10,11,10,9,11	206		
			2	10, 18	28		
			3	12,18,10	40	20	274
28.		3		12,12,10	34		
			3	17,11,10	38		
			23	15, 11, 11,9,18,20,18,18,19, } 20, 15,10,12,10,10,11,13, } 10,20,11,11,11,11	314	29	386
29.		5		22,10,11,11,10	64		
			10	16,12,12,11,18,19,18,18,14,10	148		
			1	12	12	16	224
30.		2		13, 10	23		
			2	9, 11	20		
			4	19,10,10,11	50	8	93
July 1.		1		13	15		
			2	11, 10	21		
			19	28, 22, 13,9,19,18,13,11,10, } 12, 11,11,10,15,11,11,13, } 10, 8	255	22	280
		39	44	84		167	2302

lbs.
lbs.
lbs.
bs

STATEMENT OF SALMON FISHING ON RIVER GODBOUT, SEASON OF 1886,
(Continued.)

DATE.	A. Gilmour, Ottawa.	D. Law, Montreal.	R. Muir, Montreal.	J. Manuel, Ottawa.	Weight Daily.	No. of Fish.	Total Weight.
July 1.		30	44	84			
2.			5	2	18, 10, 10, 10, 10 20, 13	58 33	7 91
3.		11		2	20, 14, 19, 12, 14, 13, 15, 13, 13. 15, 12 19, 10.	160 29	13 189
5.		3	2	12	10, 16, 11. 11, 10. 13, 13, 12, 11, 11, 11, 7, 8, 10, 18, 19, 9.	37 21 142	17 200
6.			1	5	17 13, 10, 9, 10, 13.	17 55	6 72
7.		8		4	9, 12, 11, 13, 16, 9, 10, 11 12, 10, 10, 10	91 42	12 133
8.			1	4	13 12, 10, 9, 20	13 51	5 64
9.			3	2	26, 10, 11. 11, 11.	47 22	5 69
10.			5	4	10, 11, 11, 9, 7. 11, 12, 13, 10	48 46	9 94
12.		<i>L//</i>	2	9	24, 12. 12, 10, 11, 9, 12, 10, 10, 10, 8	36 92	11 128
13.			3	2	10, 10, 12. 10, 8	32 18	5 50
14.			1	2	9 11, 21.	9 32	3 41
15.			2	2	13, 9. 11, 12.	22 23	4 45
17.			1		10	10	1 10
		61	70	134		265	3488

265 salmon, average $13\frac{1}{100}$ lbs. = 3488
 1 Grilse, " 4 " by A. Gilmour. 4
 1 Grilse, " 4 " by R. Muir. 4
 5 Grilse, " $4\frac{1}{4}$ " by J. Manuel. 23
 Total number of fish 272, weighing 3519 lbs.

STATEMENT OF SALMON FISHING on River Godbout, Season of 1887.

Total Weight.	DATE.	A. Gilmour, Ottawa.	John Manuel, Ottawa.	Jas. Law, Montreal.	Col. Irwin, Ottawa.	Capt. Irwin, Ottawa.	Weight Daily.	No. of Fish.	Total Weight.
2302	June 20		8	2			30, 19, 30, 19, 12, 12, 12, 10. 16, 18	10	168
91	21		6	7			20, 8, 19, 16, 12, 10 24, 19, 11, 9, 19, 22, 9	13	198
189	22		7	6			26, 10, 11, 10, 18, 16, 12. 17, 12, 12, 12, 10, 18	13	184
	23		10				18, 16, 15, 11, 10, 11, 25,) 10, 11, 9)	15	221
200	24		5	7			19, 19, 11, 11, 12 11, 11, 10, 10, 8, 20, 11	12	153
72	25		8	4			18, 16, 12, 10, 11, 9, 10, 12 18, 9, 11, 10	12	146
133	27		6	5			9, 20, 22, 9, 11, 10 10, 10, 10, 14, 11	11	136
64	28		5	6			12, 11, 10, 10, 9 10, 11, 8, 18, 19, 21	11	139
63	29		4	3			11, 12, 9, 9 14, 13, 10	7	78
94	30		2	3			10, 10 10, 9, 11	5	50
128	July 1		5	2			13, 10, 8, 11, 9 14, 21	7	86
50	2		1	2			12 11, 9	3	32
41	4		1	1			9 10	2	19
45	5		1	4			9 11, 12, 12, 8	7	72
10					1	1	9 11		
3488	6		2	2	3	4	10, 11 12, 16 14, 11, 9 10, 10, 10, 10	11	123
			71	59	4	5		139	1805

STATEMENT OF SALMON FISHING on River Godbout, Season of 1887,
(Continued.)

DATE.	A. Gilmour, Ottawa.	J. Manuel Ottawa.	Jas. Law, Montreal.	Col. Irwin, Ottawa.	Capt. Irwin, Ottawa.	Weight Daily.	No. of Fish.	Total Weight.
July 6.		71	59	4	5			
7.		3				11,9,19	3	1805
8.		2				10, 11		
			1			11	3	32
9.		1				17		
			2			12, 14	3	43
11.	2					10, 10		
		7				18,14,12,10,10,11,12.		
			1			12.	10	119
12.		3				12,12,10		
			1			12.	4	46
13.		1				11.		
			4			14,8,11,10	5	54
14.		2				10, 8.		
	2						2	18
	90	68	4	5			169	2156

169 Salmon, average $12\frac{1}{3}$ lbs = 2156 lbs.
 4 Grilse—5,4,5,4—caught by J. Manuel = 18
 6 Grilse—5,5,5,4,4,3—caught by Jas. Law = 26
 179 Fish, making a total weight of 2200 lbs.

STATEMENT OF SALMON FISHING ON RIVER GODBOUT, SEASON OF 1888.

Total
Weight.

805

39

32

43

19

46

54

8

6

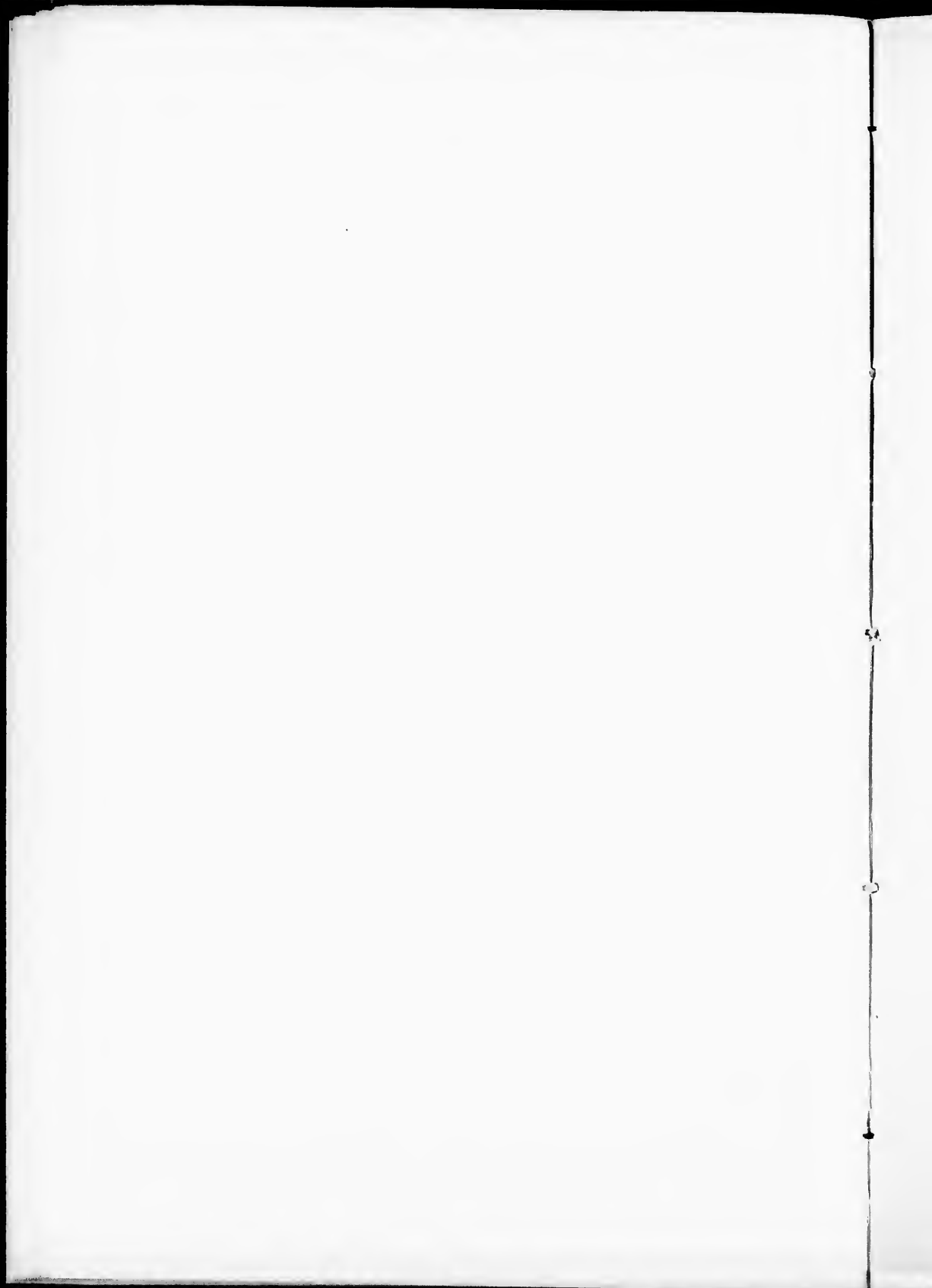
DATE.	J. Manuel, Ottawa.	Jas. Law, Montreal.	Thos. Law, Montreal.	Weight Daily.	No. of Fish	Total Weight.
June 18.	3			11,8,10	29	
		5		21,14,9,11,8	63	92
19.	3			7,11,11	29	
		7		24,16,13,10,10,9,11	93	
			4	12,17,13,8	50	172
20.	1			9	9	
		6		11,13,10,7,11,9	61	
			5	10,9,9,9,8	45	115
21.	3			11,9,9	29	
		2		14, 8	22	
			1	11	11	62
22.	8			11,13,10,9,12,11,10,9	85	
		3		12,13,21	46	
			2	9, 12	21	152
23.	7			7,7,12,11,11,10,12	70	
		3		15,10,11,12,10	58	
			2	11, 13	24	152
25.	12			15,13,10,13,13,12,13,11,11,12,12,9	144	
		2		11, 12	23	
			4	11,12,10,15	48	215
26.	3			8,20,11	39	
		16		13, 9, 11, 12,9,10,20,15,11,11,10, { 10,8,8,10,9	176	
			1	10	10	225
27.	8			9,10,10,11,12,10,10,9	81	
		6		13,13,13,10,11,12	72	153
28.	1			10	10	
		7		14,11,12,12,12,11,9	81	
			3	14,12,10	36	127
29.	2			10, 10	20	
		3		10,10,13	33	53
30.	5			11,11,9,9,10	50	
		2		9, 9	18	
			2	11, 12	23	91
	56	61	27		144	1609

STATEMENT OF SALMON FISHING on River Godbout, Season of 1888,
(Continued.)

DATE.	John Manuel, Ottawa.	Jas. Lav, Montreal.	Thos. Lav, Montreal.	Weight Daily.	No. of Fish.	Total Weight.
June 30.	56	61	27		144	1609
July 2.	14		13, 11, 11, 11, 10, 11, 11, 10, 10, 8, 7, 7, } 8, 10	128		
		1	11	11		
			2 14, 9	23	17	172
3.	3		12, 12, 10			
		11	12, 9, 9, 9, 10, 7, 11, 24, 9, 11, 11	34		
			4 10, 10, 9, 9	122		
				38	18	194
4.	6		10, 10, 10, 9, 9, 9			
		1	11	57		
			3 20, 12, 10	11		
				42	10	110
5.	7		12, 11, 11, 11, 10, 9, 9			
		4	12, 12, 9, 9	73		
			1 9	42		
				9	12	124
6.	2		10, 11			
		15	10, 11, 9, 9, 11, 10, 9, 12, 10, 8, 12, 11, } 10, 8, 8	21		
			5 9, 10, 10, 10, 13	148		
				52	22	224
7.	4		11, 11, 11, 12			
		4	10, 12, 11, 14	45		
		18	17, 20, 8, 10, 11, 8, 10, 12, 10, 9, 9, 11, } 12, 12, 9, 8, 10, 10	47		
				196	26	288
9.	8		11, 10, 10, 11, 10, 12, 12, 12			
		2	9, 10	88		
			6 13, 9, 8, 12, 11, 11	19		
				64	16	171
10.	6		10, 10, 10, 11, 11, 12			
		15	11, 9, 11, 11, 9, 12, 8, 7, 6, 10, 7, 10, 9, } 10, 10	64		
			2 10, 11	140		
				21	23	225
11.	4		13, 11, 11, 12			
		3	9, 12, 11	47		
		16	8, 10, 11, 7, 12, 9, 9, 10, 11, 12, 9, 10, 9, } 10, 11, 11	32		
				159	23	238
12.	5		11, 8, 11, 12, 11			
		3	11, 12, 10	53		
				33	8	86
	115	120	84		319	3438

of 1888,

No. of sh.	Total Weight.
4	1609
	172
	194
	110
	124
	221
	288
	171
	225
	238
	86
	<hr/> 3438



STATEMENT OF SALMON FISHING ON RIVER GODBOUT, Season of 1888
(Continued.)

DATE.	J. Manuel, Ottawa.	J. Law, Montreal.	Thos. Law, Montreal.	Weight Daily.	No of Fish.	Total Weight.
July 12.	115	120	84		319	3438
13.	1	4	2	14. 10,11,12,17. 13, 16	7	93
14.		2	8	14, 9 20,15,11,11,11,9,9,8	10	117
16.	11		1	11,9,9,10,8,11,9,8,7,10,11 13.	12	116
17.		3	1	10,9,9 13.	4	41
18.	1		6	11. 12,10,9,9,11,10	7	72
19.	5			12,11,10,10,8	5	51
20.		2		11, 12	2	23
21.			3	18,11,11	3	40
	133	131	105		369	3991

369 Salmon average $10\frac{113}{1000}$ lbs. = 3991 lbs.

10 Grilse—4,4,4,4,4,4,4,3,3—by J. Manuel. 38

6 Grilse—4,4,4,4,3,3—by Jas. Law 22

7 Grilse—4,4,4,4,3,3 by Thos. Law 26

392 Fish, making a total weight of. 4077 lbs.

