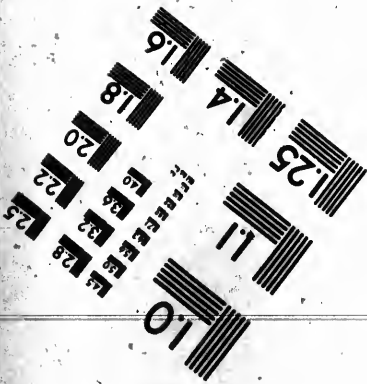
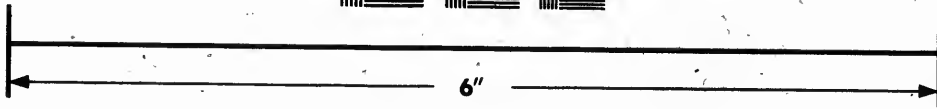
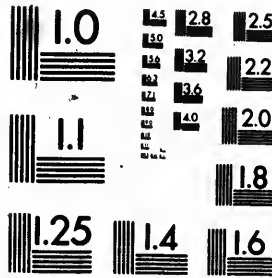


**IMAGE EVALUATION
TEST TARGET (MT-3)**



**Photographic
Sciences
Corporation**

23 WEST MAIN STREET
WEBSTER, N.Y. 14580
(716) 872-4503

**CIHM
Microfiche
Series
(Monographs)**

**ICMH
Collection de
microfiches
(monographies)**



Canadian Institute for Historical Microreproductions / Institut canadien de microreproductions historiques

© 1992

Technical and Bibliographic Notes / Notes techniques et bibliographiques

The Institute has attempted to obtain the best original copy available for filming. Features of this copy which may be bibliographically unique, which may alter any of the images in the reproduction, or which may significantly change the usual method of filming, are checked below.

L'Institut a microfilmé le meilleur exemplaire qu'il lui a été possible de se procurer. Les détails de cet exemplaire qui sont peut-être uniques du point de vue bibliographique, qui peuvent modifier une image reproduite, ou qui peuvent exiger une modification dans la méthode normale de filmage sont indiqués ci-dessous.

- Coloured covers/
Couverture de couleur
- Covers damaged/
Couverture endommagée
- Covers restored and/or laminated/
Couverture restaurée et/ou pelliculée
- Cover title missing/
Le titre de couverture manque
- Coloured maps/
Cartes géographiques en couleur
- Coloured ink (i.e. other than blue or black)/
Encre de couleur (i.e. autre que bleue ou noire)
- Coloured plates and/or illustrations/
Planches et/ou illustrations en couleur
- Bound with other material/
Relié avec d'autres documents
- Tight binding may cause shadows or distortion
along interior margin/
La reliure serrée peut causer de l'ombre ou de la
distorsion le long de la marge intérieure
- Blank leaves added during restoration may appear
within the text. Whenever possible, these have
been omitted from filming/
Il se peut que certaines pages blanches ajoutées
lors d'une restauration apparaissent dans le texte,
mais, lorsque cela était possible, ces pages n'ont
pas été filmées.

- Coloured pages/
Pages de couleur
- Pages damaged/
Pages endommagées
- Pages restored and/or laminated/
Pages restaurées et/ou pelliculées
- Pages discoloured, stained or foxed/
Pages décolorées, tachetées ou piquées
- Pages detached/
Pages détachées
- Showthrough/
Transparence
- Quality of print varies/
Qualité inégale de l'impression
- Continuous pagination/
Pagination continue
- Includes index(es)/
Comprend un (des) index

Title on header taken from: /
Le titre de l'en-tête provient:

- Title page of issue/
Page de titre de la livraison
- Caption of issue/
Titre de départ de la livraison
- Masthead/
Générique (périodiques) de la livraison

- Additional comments: /
Commentaires supplémentaires:

This item is filmed at the reduction ratio checked below/
Ce document est filmé au taux de réduction indiqué ci-dessous.

10X	14X	18X	22X	26X	30X
<input type="checkbox"/>	<input type="checkbox"/>	<input type="checkbox"/>	<input checked="" type="checkbox"/>	<input type="checkbox"/>	<input type="checkbox"/>
12X	16X	20X	24X	28X	32X

The copy filmed here has been reproduced thanks to the generosity of:

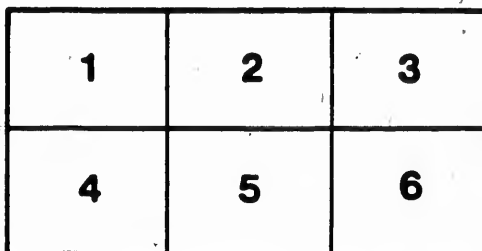
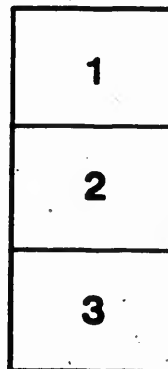
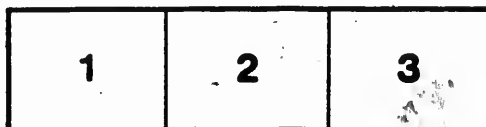
Library of the National Archives of Canada

The images appearing here are the best quality possible considering the condition and legibility of the original copy and in keeping with the filming contract specifications.

Original copies in printed paper covers are filmed beginning with the front cover and ending on the last page with a printed or illustrated impression, or the back cover when appropriate. All other original copies are filmed beginning on the first page with a printed or illustrated impression, and ending on the last page with a printed or illustrated impression.

The last recorded frame on each microfiche shall contain the symbol \rightarrow (meaning "CONTINUED"), or the symbol ∇ (meaning "END"), whichever applies.

Maps, plates, charts, etc., may be filmed at different reduction ratios. Those too large to be entirely included in one exposure are filmed beginning in the upper left hand corner, left to right and top to bottom, as many frames as required. The following diagrams illustrate the method:



L'exemplaire filmé fut reproduit grâce à la générosité de:

La bibliothèque des Archives nationales du Canada

Les images suivantes ont été reproduites avec le plus grand soin, compte tenu de la condition et de la netteté de l'exemplaire filmé, et en conformité avec les conditions du contrat de filmage.

Les exemplaires originaux dont la couverture en papier est imprimée sont filmés en commençant par le premier plat et en terminant soit par la dernière page qui comporte une empreinte d'impression ou d'illustration, soit par le second plat, selon le cas. Tous les autres exemplaires originaux sont filmés en commençant par la première page qui comporte une empreinte d'impression ou d'illustration et en terminant par la dernière page qui comporte une telle empreinte.

Un des symboles suivants apparaîtra sur la dernière image de chaque microfiche, selon le cas: le symbole \rightarrow signifie "A SUIVRE", le symbole ∇ signifie "FIN".

Les cartes, planches, tableaux, etc., peuvent être filmés à des taux de réduction différents. Lorsque le document est trop grand pour être reproduit en un seul cliché, il est filmé à partir de l'angle supérieur gauche, de gauche à droite, et de haut en bas, en prenant le nombre d'images nécessaire. Les diagrammes suivants illustrent la méthode.



Demill's Residential Academy

And Day School.

179 BEVERLEY STREET, TORONTO.

To an Interested Public:—

During the sixteen years that I have spent in connection with female education in the Province of Ontario, the fact has frequently been forced upon my attention that in this large and influential Protestant province, no provision has been made—except in charitable institutions—for providing a home and education for motherless, orphans, and other little girls requiring the advantages of such an institution, outside the Roman Catholic Church.

Latterly, this want has become so apparent and pressing that I have felt it to be my plain duty to meet it, even though at great personal sacrifice.

For the purpose of giving effect to my intention in this respect, I have purchased the property of the late Judge Duggan, corner of Beverley and Baldwin Streets, in the city of Toronto, and am having it fitted up with every convenience and comfort for the purpose of a home and school.

These premises are very extensive and are situated in one of the most healthy and respectable localities in the city, and are convenient to street cars, churches, etc.

The Home will be under the care of a matron of experience, whose Christian character and kindly disposition are a guarantee that everything possible will be done to develop a high moral character in those entrusted to her care, and that her government will be a rule of love and kindness.

It is determined that the institution shall be one in which the little ones will not be left without the affection of a home. To this end, the co-operation of all Christian and philanthropic ladies is invited, to aid the officers in their efforts to bring sunshine and joy into the lives and hearts of the young students.

The school is in no sense a charitable institution, and children attending it will not be reduced in their social standing; yet the fees are put at the lowest possible point for the purpose of placing the school within the reach of parents of moderate means, and of competing with the convents.

The convents are built by contributions; they are free from taxes, and the nuns, who do the teaching, are paid no salaries. To compete with schools conducted in this manner is no ordinary undertaking, and it will require the support and encouragement of a united Protestant people to make it a success, which can only be attained by a very large attendance.

It is after careful consideration that I have assumed this work, and my determination is to provide a comfortable and pleasant home, affectionate, tender care, with superior moral training. Each child will be brought up in the church of its parents' choice. The teaching will be thorough in every respect. Most of the teachers will be college graduates, and all will be fully competent. The text-books will be the same as those of the public schools, and students will be taught along the same lines, so that, if at any time a change should become desirable, a student can enter other schools without a break in her studies.

Girls between six and fourteen years of age will be received as students, and instructed in the English branches, Calisthenics, etc., and all necessary care will be taken of their wardrobe, for a school year of forty-four weeks, for one hundred dollars. Shorter terms than one year, \$2.50 per week. The Residence will be kept open the year round, and yearly students requiring to remain during the vacation will be kept and cared for, for an additional fifteen dollars.

Music, Drawing, Painting, the Languages, Fine Arts, Needle Work, etc., will be taught as extras at very moderate additional rates.

There will be a Day School in connection with the Academy, for girls and young ladies. The branches taught will be identical with those of the best ladies' Colleges in the country, and prices will be correspondingly low with those of the Residence. Professor V. P. Hunt, director of the Musical Department of Demill College, Oshawa, will have the Direction of the Musical Department in this school. Calisthenics will be free to the school.

The Residence opens on the 30th of June, 1890, and will be prepared to accommodate all who may apply.

Terms for Day Pupils.

English Branches	per term	\$3 00.
Music	" "	5 00.
Drawing	" "	3 00.
Painting	" "	7 00.
Languages	" "	3 00.
Violin	" "	6 00.

Toronto, June 16th, 1890.

A. B. DEMILL.

