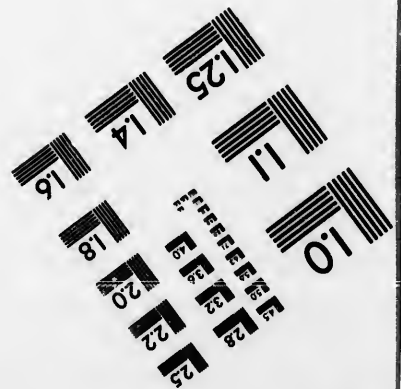
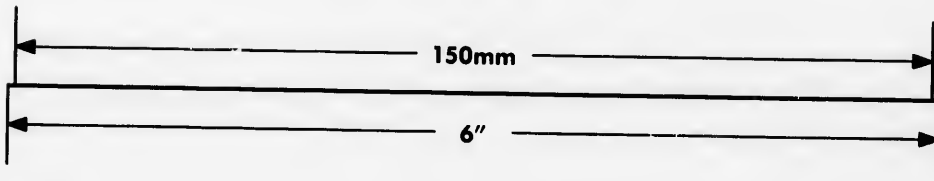
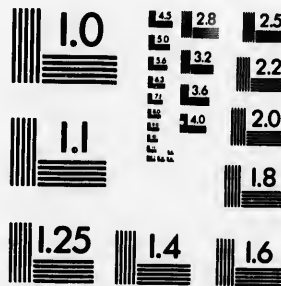
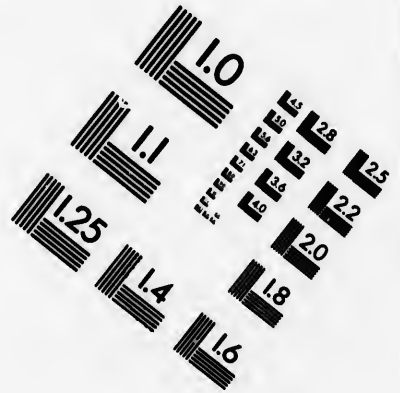
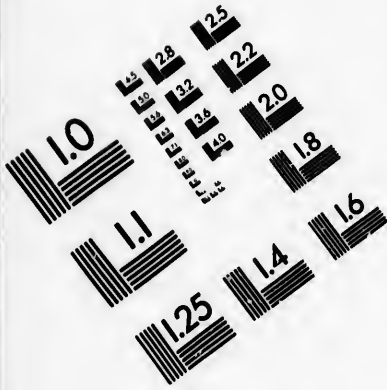


# IMAGE EVALUATION TEST TARGET (MT-3)



**APPLIED IMAGE, Inc**  
 1653 East Main Street  
 Rochester, NY 14609 USA  
 Phone: 716/482-0300  
 Fax: 716/288-5989

© 1993, Applied Image, Inc., All Rights Reserved

**CIHM  
Microfiche  
Series  
(Monographs)**

**ICMH  
Collection de  
microfiches  
(monographies)**



**Canadian Institute for Historical Microreproductions / Institut canadien de microreproductions historiques**

**© 1993**

Technical and Bibliographic Notes / Notes techniques et bibliographiques

The Institute has attempted to obtain the best original copy available for filming. Features of this copy which may be bibliographically unique, which may alter any of the images in the reproduction, or which may significantly change the usual method of filming, are checked below.

L'Institut a microfilmé le meilleur exemplaire qu'il lui a été possible de se procurer. Les détails de cet exemplaire qui sont peut-être uniques du point de vue bibliographique, qui peuvent modifier une image reproduite, ou qui peuvent exiger une modification dans la méthode normale de filmage sont indiqués ci-dessous.

Coloured covers/  
Couverture de couleur

Covers damaged/  
Couverture endommagée

Covers restored and/or laminated/  
Couverture restaurée et/ou pelliculée

Cover title missing/  
Le titre de couverture manque

Coloured maps/  
Cartes géographiques en couleur

Coloured ink (i.e. other than blue or black)/  
Encre de couleur (i.e. autre que bleue ou noire)

Coloured plates and/or illustrations/  
Planches et/ou illustrations en couleur

Bound with other material/  
Relié avec d'autres documents

Tight binding may cause shadows or distortion along interior margin/  
La reliure serrée peut causer de l'ombre ou de la distorsion le long de la marge intérieure

Blank leaves added during restoration may appear within the text. Whenever possible, these have been omitted from filming/  
Il se peut que certaines pages blanches ajoutées lors d'une restauration apparaissent dans le texte, mais, lorsque cela était possible, ces pages n'ont pas été filmées.

Additional comments: /  
Commentaires supplémentaires:

Coloured pages/  
Pages de couleur

Pages damaged/  
Pages endommagées

Pages restored and/or laminated/  
Pages restaurées et/ou pelliculées

Pages discoloured, stained or foxed/  
Pages décolorées, tachetées ou piquées

Pages detached/  
Pages détachées

Showthrough/  
Transparence

Quality of print varies/  
Qualité inégale de l'impression

Continuous pagination/  
Pagination continue

Includes index(es)/  
Comprend un (des) index

Title on header taken from: /  
Le titre de l'en-tête provient:

Title page of issue/  
Page de titre de la livraison

Caption of issue/  
Titre de départ de la livraison

Masthead/  
Générique (périodiques) de la livraison

This item is filmed at the reduction ratio checked below/  
Ce document est filmé au taux de réduction indiqué ci-dessous.

10X	12X	14X	16X	18X	20X	22X	24X	26X	28X	30X	32X
<input type="checkbox"/>	<input type="checkbox"/>	<input type="checkbox"/>	<input type="checkbox"/>	<input type="checkbox"/>	<input type="checkbox"/>	<input type="checkbox"/>	<input type="checkbox"/>	<input type="checkbox"/>	<input checked="" type="checkbox"/>	<input type="checkbox"/>	<input type="checkbox"/>

The copy filmed here has been reproduced thanks to the generosity of:

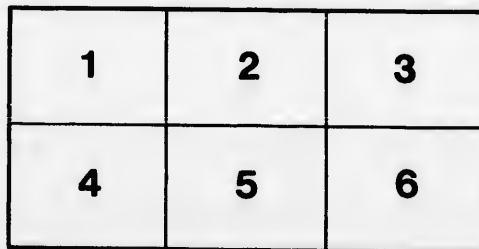
National Library of Canada

The images appearing here are the best quality possible considering the condition and legibility of the original copy and in keeping with the filming contract specifications.

Original copies in printed paper covers are filmed beginning with the front cover and ending on the last page with a printed or illustrated impression, or the back cover when appropriate. All other original copies are filmed beginning on the first page with a printed or illustrated impression, and ending on the last page with a printed or illustrated impression.

The last recorded frame on each microfiche shall contain the symbol  $\rightarrow$  (meaning "CONTINUED"), or the symbol  $\nabla$  (meaning "END"), whichever applies.

Maps, plates, charts, etc., may be filmed at different reduction ratios. Those too large to be entirely included in one exposure are filmed beginning in the upper left hand corner, left to right and top to bottom, as many frames as required. The following diagrams illustrate the method:



L'exemplaire filmé fut reproduit grâce à la générosité de:

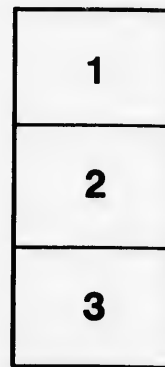
Bibliothèque nationale du Canada

Les images suivantes ont été reproduites avec le plus grand soin, compte tenu de la condition et de la netteté de l'exemplaire filmé, et en conformité avec les conditions du contrat de filmage.

Les exemplaires originaux dont la couverture en papier est imprimée sont filmés en commençant par le premier plat et en terminant soit par la dernière page qui comporte une empreinte d'impression ou d'illustration, soit par le second plat, selon le cas. Tous les autres exemplaires originaux sont filmés en commençant par la première page qui comporte une empreinte d'impression ou d'illustration et en terminant par la dernière page qui comporte une telle empreinte.

Un des symboles suivants apparaîtra sur la dernière image de chaque microfiche, selon le cas: le symbole  $\rightarrow$  signifie "A SUIVRE", le symbole  $\nabla$  signifie "FIN".

Les cartes, planches, tableaux, etc., peuvent être filmés à des taux de réduction différents. Lorsque le document est trop grand pour être reproduit en un seul cliché, il est filmé à partir de l'angle supérieur gauche, de gauche à droite, et de haut en bas, en prenant le nombre d'images nécessaire. Les diagrammes suivants illustrent la méthode.



[6-]p. 2, 1900?

Through the  
**Maritime Provinces**

(New Brunswick and Nova Scotia)

---

---

Including the Gaspé Coast, Cape Breton, Prince Edward Island  
and a portion of the Province of Quebec

---

---

BY  
**J. WESLEY SWAN**  
MONTREAL

*Albert P. C.*

FC 2025

04

582

1900

p\*\*\*1

## Through the Maritime Provinces

---

---



THE wonderful charm of a cool summer climate, the magnificent scenery and historic associations, the endless variety of tourist routes, the unexcelled wealth of river and forest for the sportsman and angler are yearly attracting to Canada an ever increasing number of summer tourists and travellers, and of these welcome visitors, a goodly number wend their way to the Province of Quebec and the Maritime Provinces. The natural Canadian gateways for travellers to this portion of the Dominion are Montreal, Quebec, St. John, Halifax, and the Sydneys, and it is as a souvenir for visitors arriving at any of these places, as well as for the residents of the different cities, towns and villages situated on the route of the famous "Maritime Express" of the Intercolonial Railway, that this handsome illustrated book has been published. The views shown are reproductions from direct photographs made by the publisher and are only available through this channel.

The City of Montreal being the Metropolitan City of Canada and the western terminus of this great railway system, it has been considered desirable in the arrangement of the illustrations to commence at that city and to include a few of the best views en route from Montreal to the sea. It is manifestly impossible in a production of this nature to do justice to the country traversed, but the publication will give an insight to the many beautiful localities and the picturesque beauties that are to be found in this section of the British Empire.

The engravings illustrate the City of Quebec, stretches along the Lower St. Lawrence, and on through the picturesque Metapedia Valley. It also portrays the shore of the famed Baie de Chaleur and gives pretty vistas through New Brunswick and Nova Scotia to the historic city of Halifax, including the most important points in the Maritime Provinces, the City of St. John, the Sydneys, that summer paradise Cape Breton, and Prince Edward Island—the Garden of the Gulf. Embraced in this territory is such a variety of attractions that the requirements of all travellers may be met, and once here what more suitable souvenir can be secured than the booklet entitled "Through the Maritime Provinces"?



CITY OF QUEBEC, FROM LEVIS



MURRAY BAY, QUEBEC

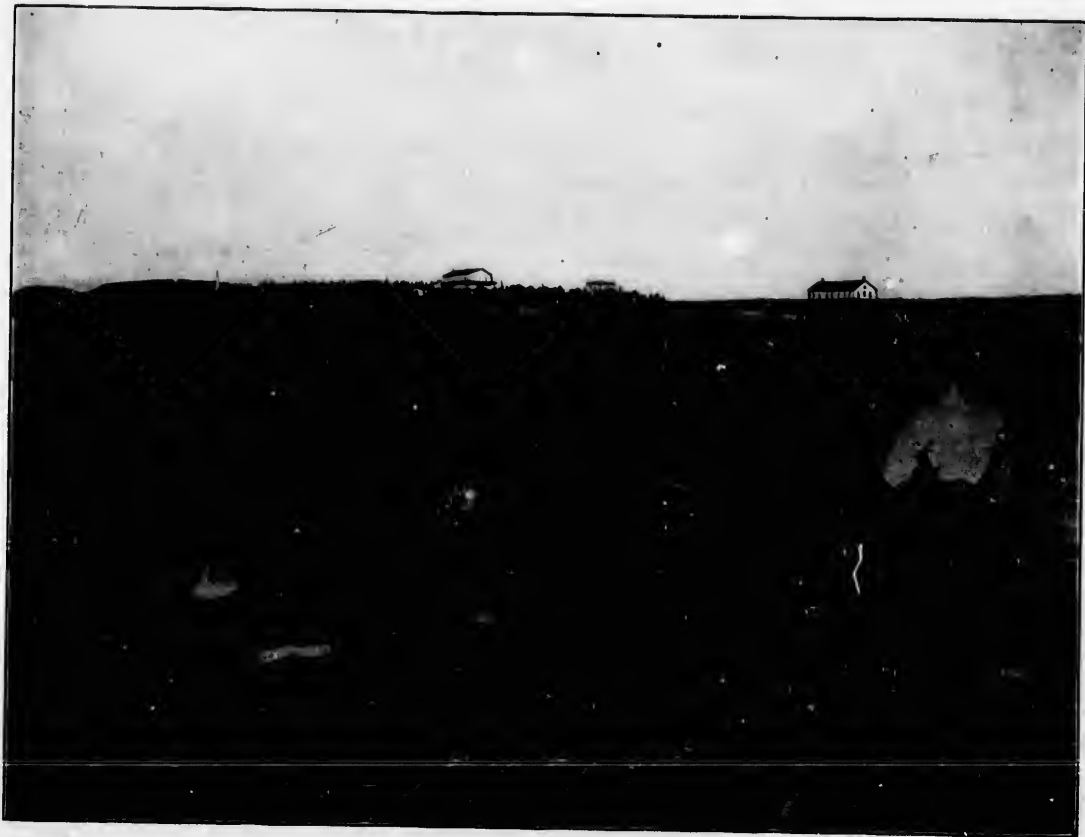




MANOIR RICHELIEU, MURRAY BAY, QUEBEC



TADOUSAC, SHOWING SAGUENAY RIVER



RIVIERE DU LOUP, PROVINCE OF QUEBEC



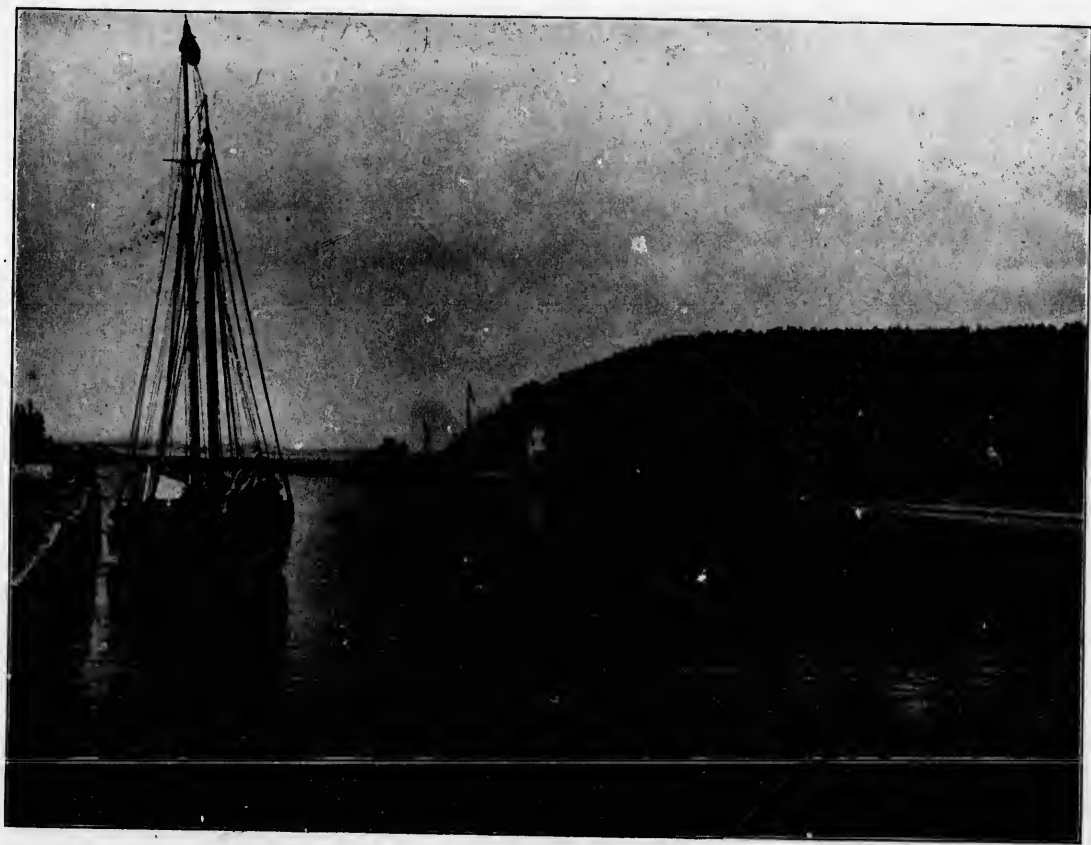
BATHING BEACH, CACOUNA, QUEBEC



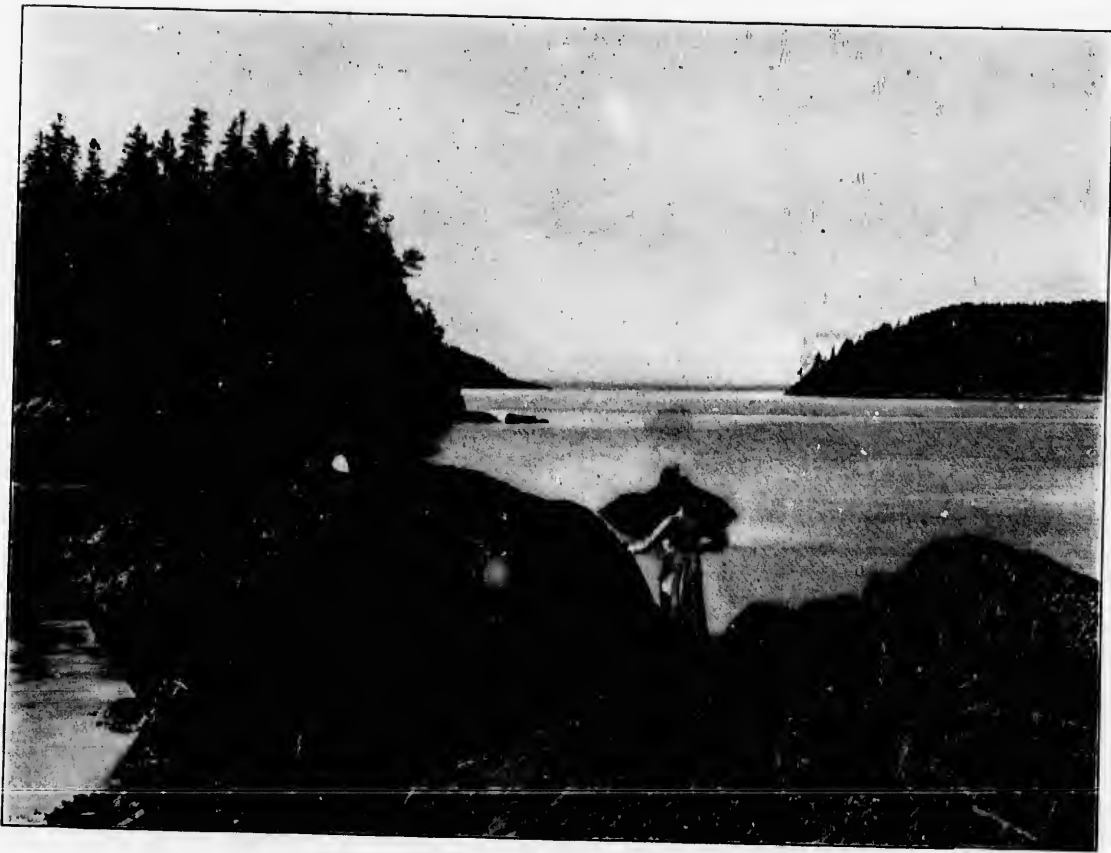
SAND PEEPS, CACOUNA, QUEBEC



PICTURESQUE VISTA FROM BIC THE BEAUTIFUL, QUEBEC



SUMMER HOMES AT BIC THE BEAUTIFUL, QUEBEC



AT BIC THE BEAUTIFUL, QUEBEC





GRAND RIVER, LITTLE METIS, QUEBEC



GRAND FALLS, LITTLE METIS, QUÉBEC



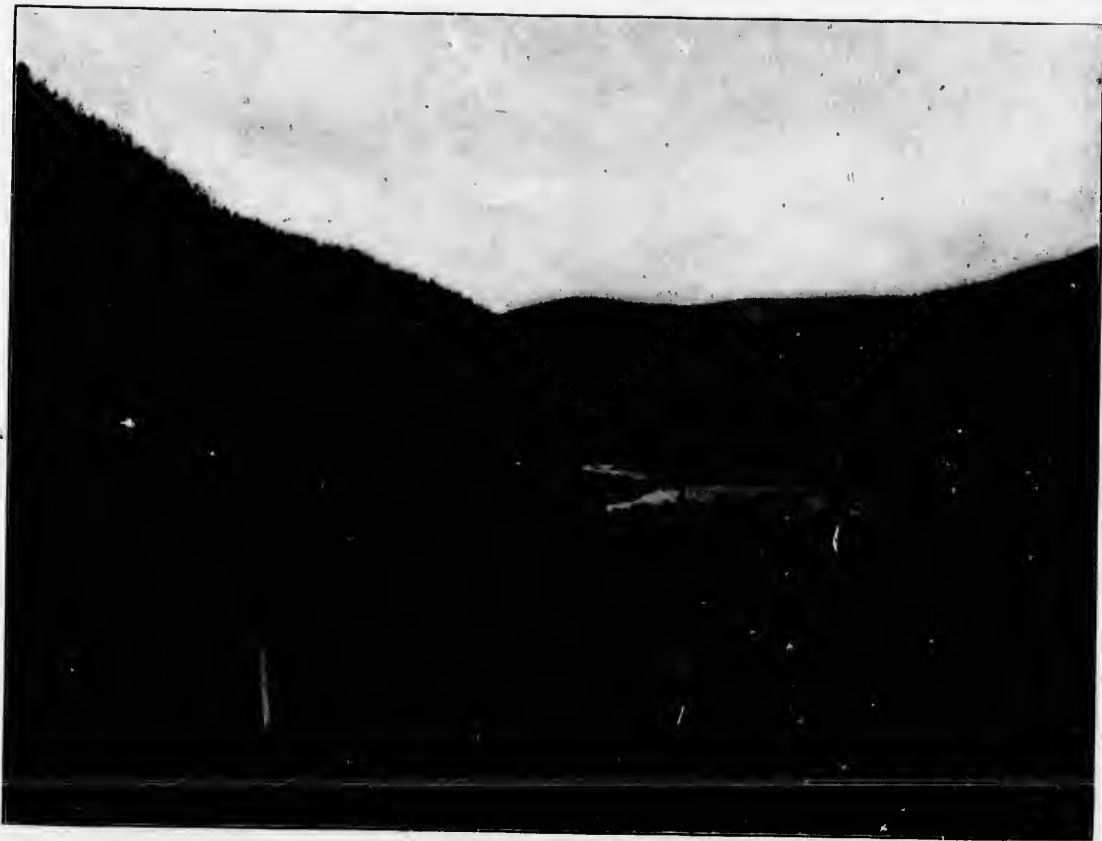
GOLF LINKS, LITTLE METIS, QUEBEC



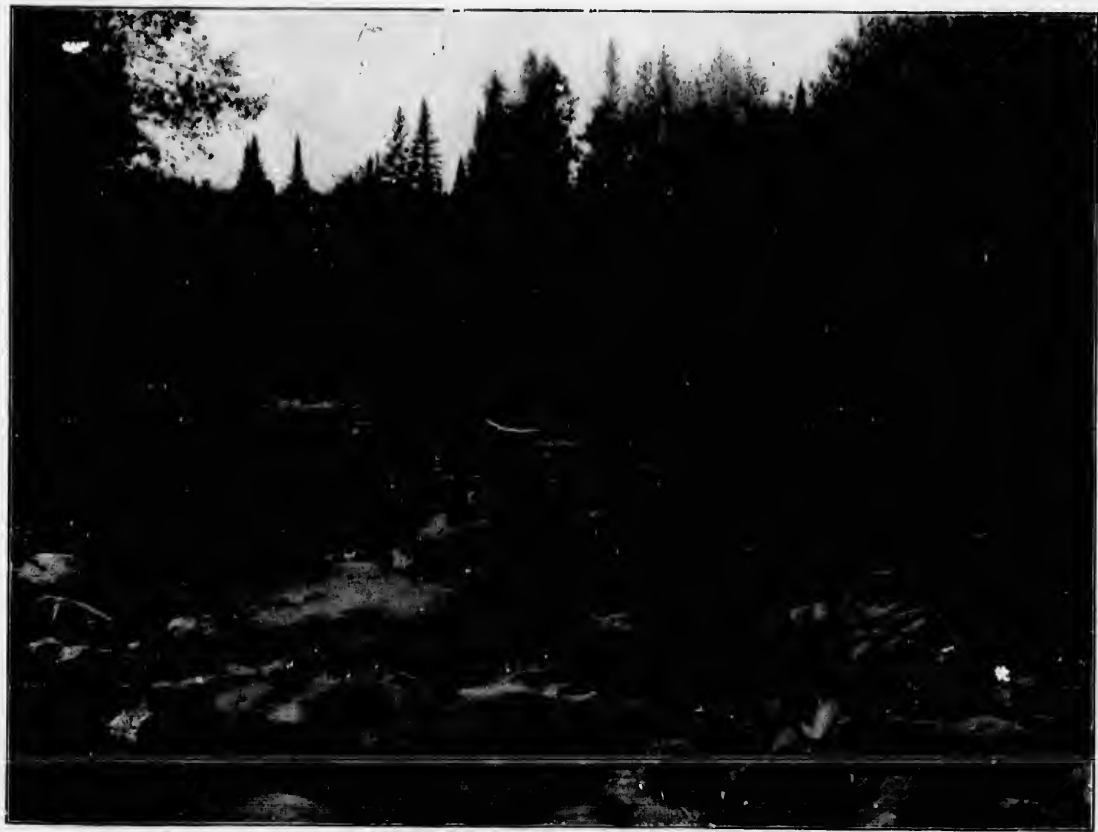
SALMON STREAM, METAPEDIA VALLEY



THROUGH THE METAPEDIA VALLEY



THROUGH THE METAPEDIA VALLEY



TROUT STREAM, TRIBUTARY TO THE METAPEDIA

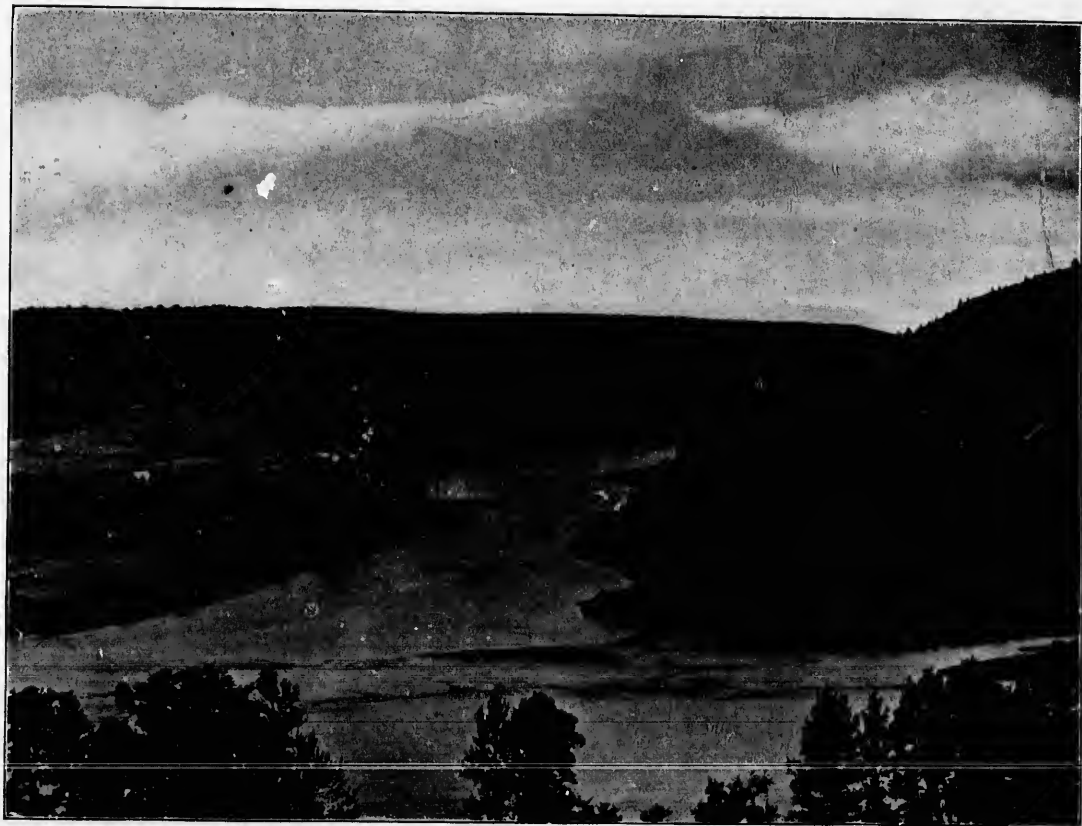


TROUT FISHING, METAPELIS, N. Y.





SALMON FISHING, METAPEDIA RIVER



THE MEETING OF THE WATERS, RESTIGOUCHE AND METAPEDIA RIVERS



MORRISSEY ROCK, NEAR CAMPBELLTON, N. B.



PORT DANIELS, GASPE COAST



PERCÉ ROCK, GASPÉ COAST



PERCÉ ROCK, GASPE COAST



GASPE BASIN, PROVINCE OF QUEBEC



GASPE BASIN, PROVINCE OF QUEBEC





ON THE NEPISIGUIT, BATHURST, N.B.



PETITCODIAC RIVER AT LOW TIDE, MONCTON, N.B.



PETITCODIAC RIVER, TIDAL WAVE APPROACHING, MONCTON, N.B.



ROCKS AT HOPEWELL CAPE, NEAR MONCTON, N.B.

ROCKS AT HOPEWELL CAPE, NEAR MONCTON, N.B.



HAMPTON VALLEY, NEAR ST. JOHN, N.B.



REVERSING FALLS (TIDE GOING OUT), ST. JOHN, N.B.



MARTELLO TOWER, ST. JOHN, N.B.



ROCKWOOD PARK, ST. JOHN, N.B.





SURF BATHING, ST. JOHN, N.B.



SURF SCENE AT HALIFAX, N.S.



PUBLIC PARK, HALIFAX, N.S.



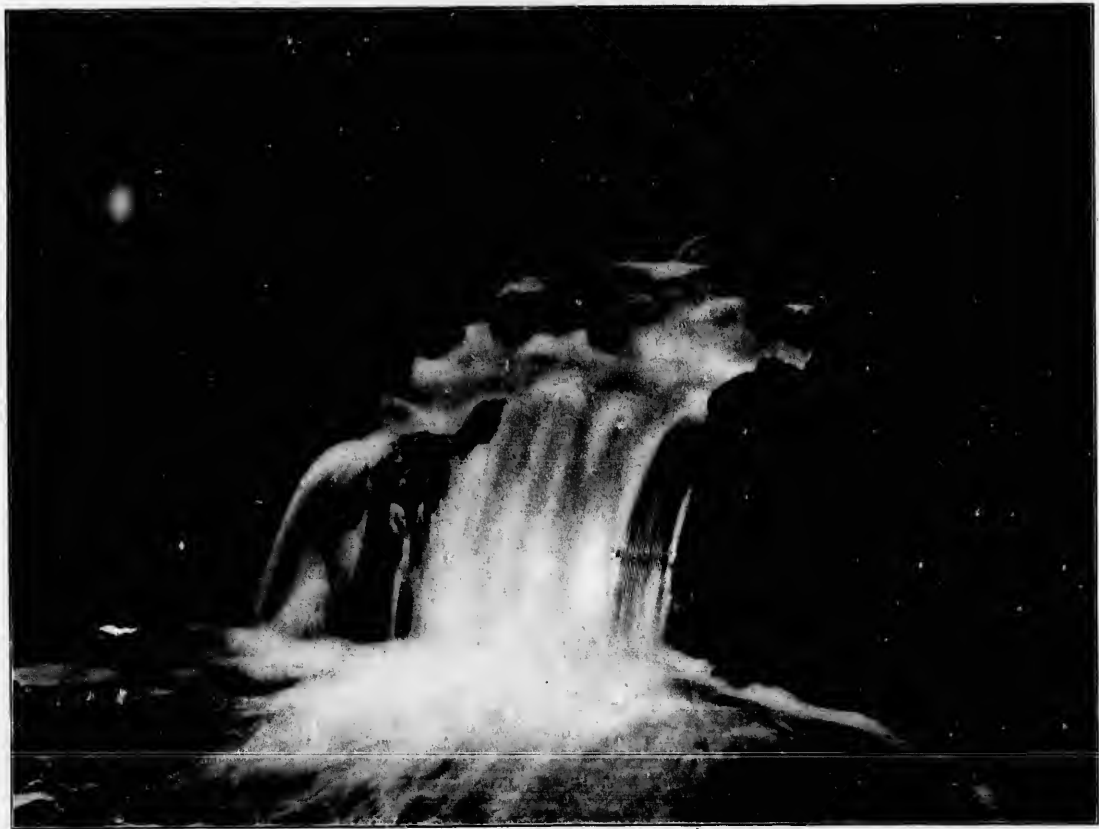
IN POINT PLEASANT PARK, HALIFAX, N.S.



REGATTA, HALIFAX, N.S.



PUBLIC PARK, HALIFAX, N.S.

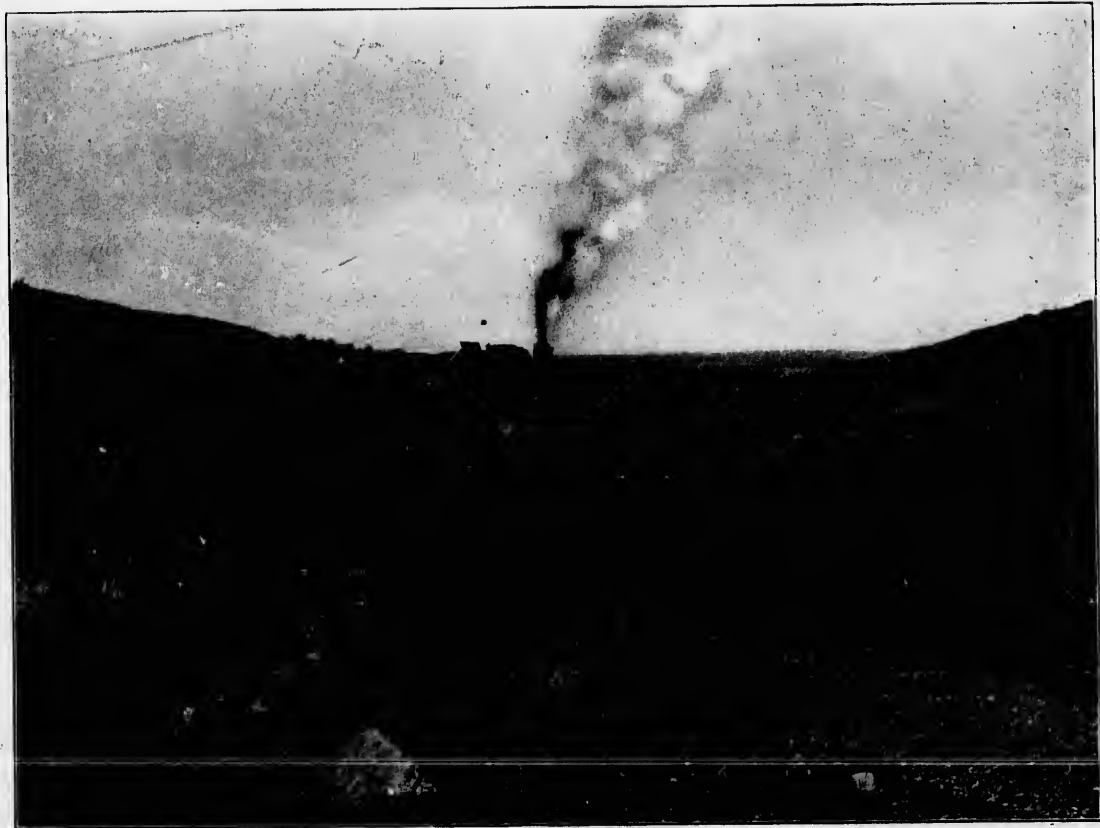


JOE HOWE FALLS, TRURO, N.S.



FOLLEIGH LAKE, NEAR TRURO, N.S.





MARITIME EXPRESS, WENTWORTH VALLEY, N.S.



ALONG THE BEACH, NEAR PICTOU, N.S.



SURF, AT PICTOU, N.S.



ENTRANCE TO PICTOU HARBOR, N.S.



NEAR ANTIGONISH, N.S.



WHYCOCOMAGH, CAPE BRETON, N.S.



GRAND NARROWS, CAPE BRETON, N.S.



BADDECK, CAPE BRETON, N.S.





BRAS\_D'OR LAKES, CAPE BRETON, N.S.



YACHT RACE, SYDNEY, CAPE BRETON, N.S.

D



SYDNEY, CAPE BRETON, N.S.



LOUISBOURG, NEAR SYDNEY, CAPE BRETON, N.S.



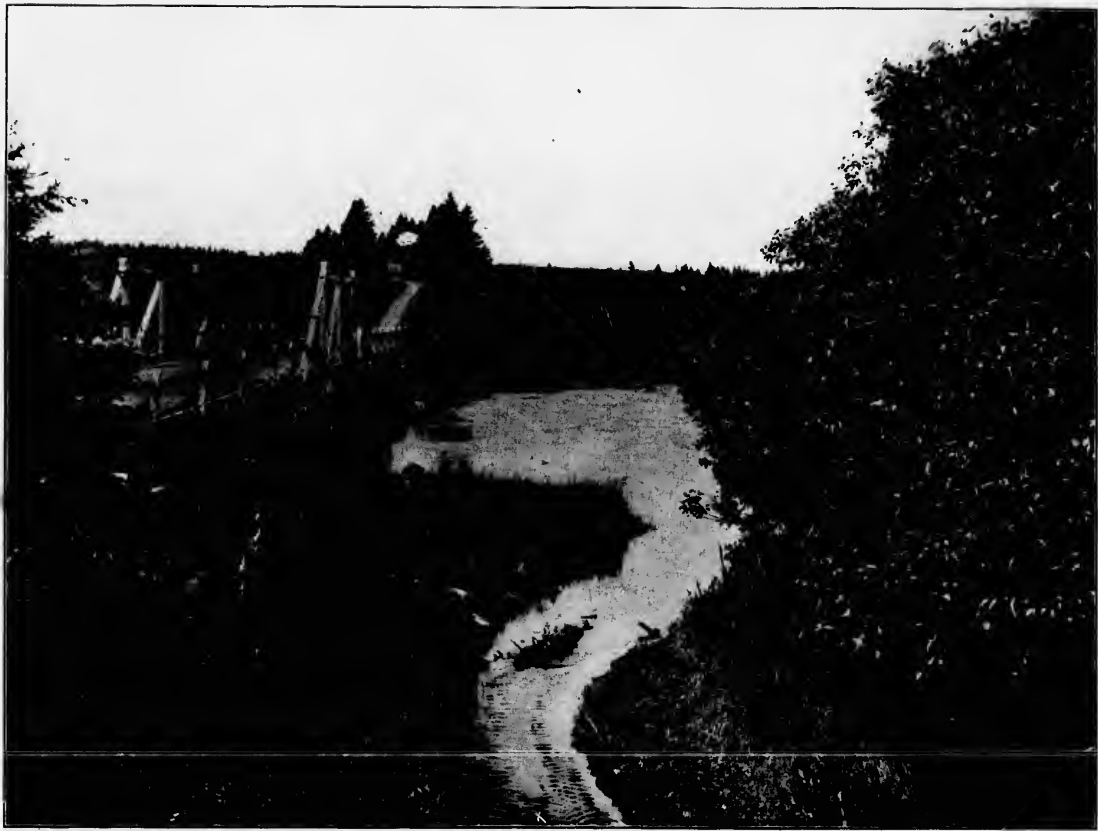
STEAMER "NORTHUMBERLAND" LEAVING SUMMERSIDE, P.E.I.



MORRELL RIVER, P.E.I.

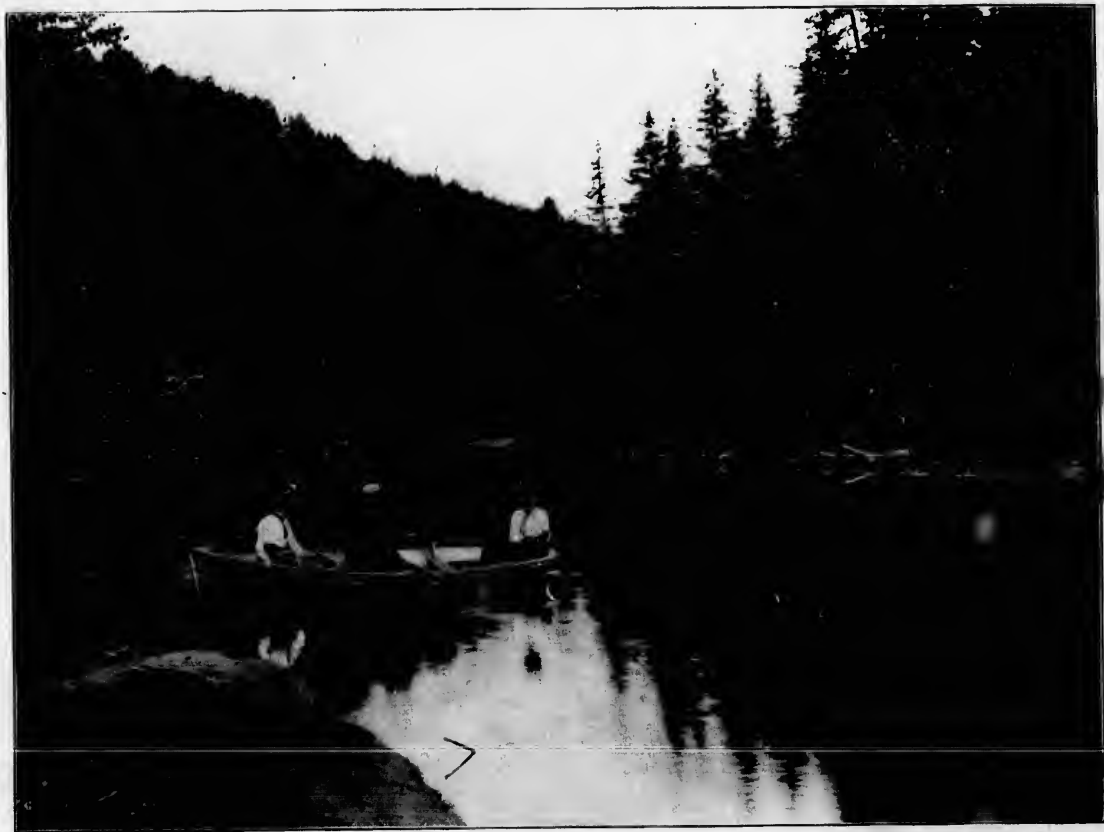


RUSTICO BEACH, P.E.I.



TROUT FISHING, P.E.I.

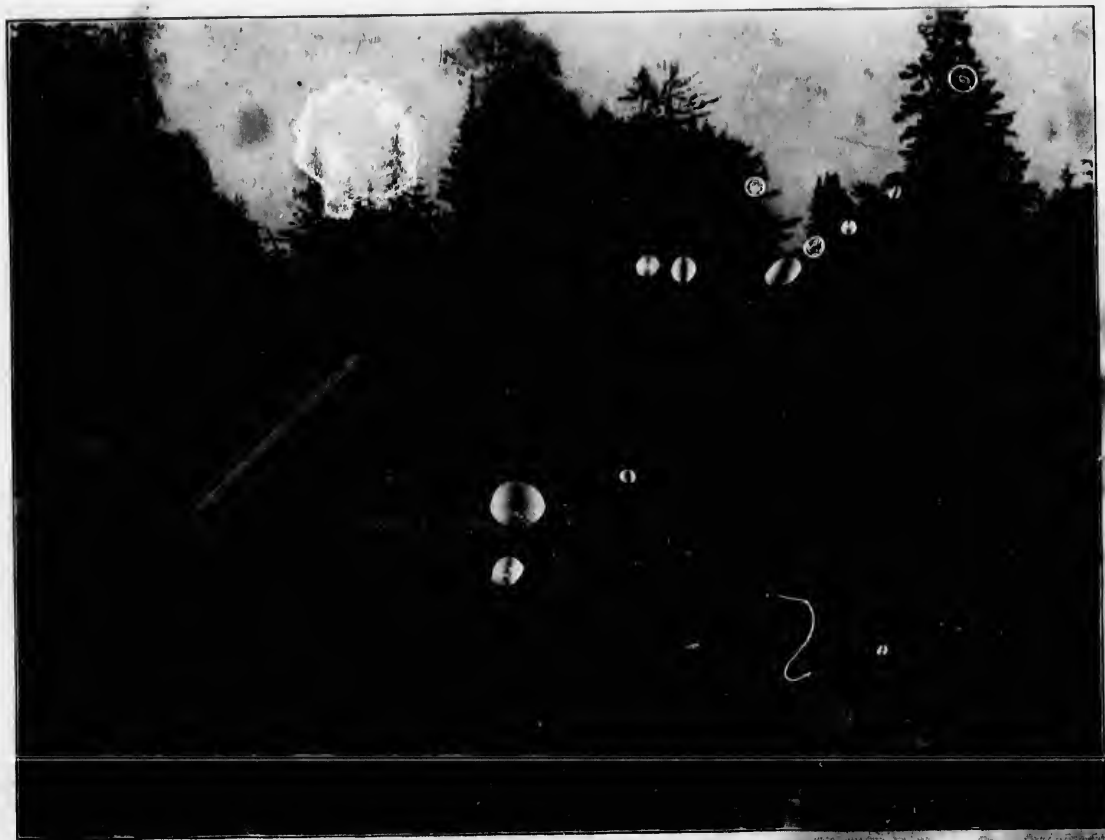




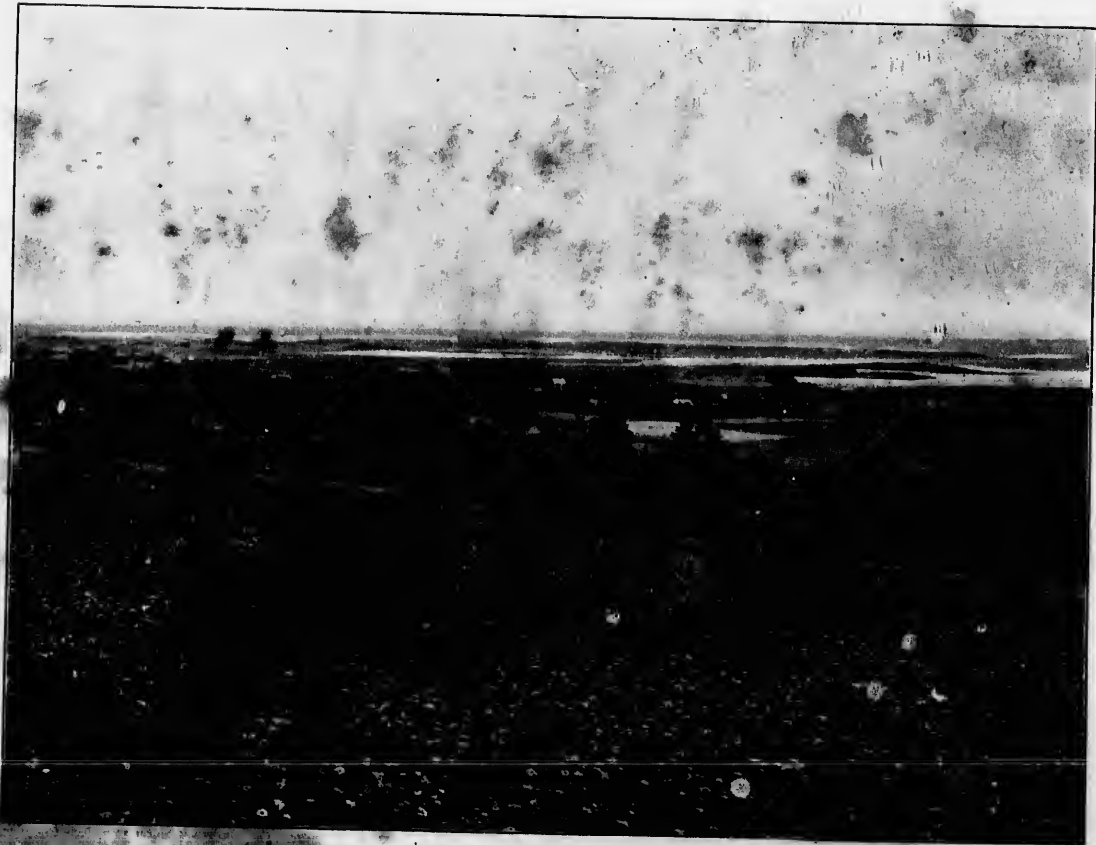
A QUIET NOOK, P.E.I.



A COUNTRY DRIVE, P.E.I.



PASTORAL SCENE, P.E.I.



POWNALL BAY, P.E.I.

