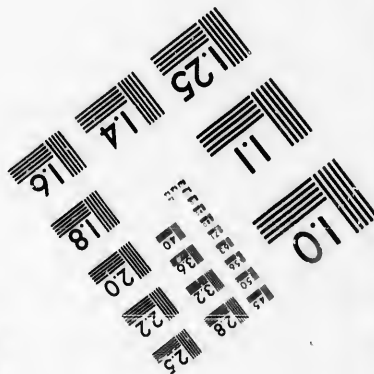
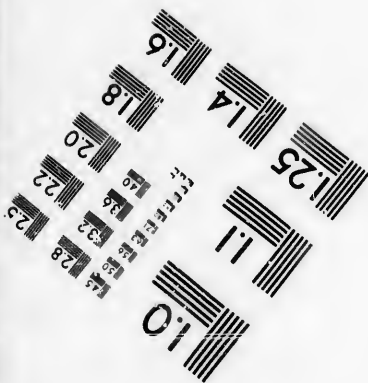
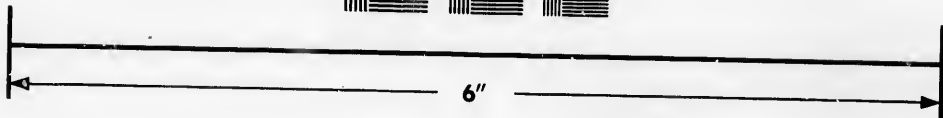
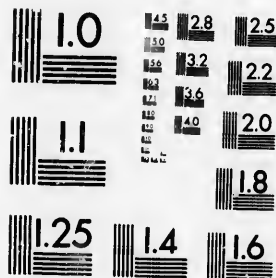


**IMAGE EVALUATION
TEST TARGET (MT-3)**



**Photographic
Sciences
Corporation**

23 WEST MAIN STREET
WEBSTER, N.Y. 14590
(716) 872-4503

**CIHM/ICMH
Microfiche
Series.**

**CIHM/ICMH
Collection de
microfiches.**



Canadian Institute for Historical Microreproductions / Institut canadien de microreproductions historiques

© 1986

Technical and Bibliographic Notes/Notes techniques et bibliographiques

The institute has attempted to obtain the best original copy available for filming. Features of this copy which may be bibliographically unique, which may alter any of the images in the reproduction, or which may significantly change the usual method of filming, are checked below.

L'Institut a microfilmé le meilleur exemplaire qu'il lui a été possible de se procurer. Les détails de cet exemplaire qui sont peut-être uniques du point de vue bibliographique, qui peuvent modifier une image reproduite, ou qui peuvent exiger une modification dans la méthode normale de filmage sont indiqués ci-dessous.

- | | |
|---|---|
| <input checked="" type="checkbox"/> Coloured covers/
Couverture de couleur | <input type="checkbox"/> Coloured pages/
Pages de couleur |
| <input type="checkbox"/> Covers damaged/
Couverture endommagée | <input type="checkbox"/> Pages damaged/
Pages endommagées |
| <input type="checkbox"/> Covers restored and/or laminated/
Couverture restaurée et/ou pelliculée | <input type="checkbox"/> Pages restored and/or laminated/
Pages restaurées et/ou pelliculées |
| <input type="checkbox"/> Cover title missing/
Le titre de couverture manque | <input checked="" type="checkbox"/> Pages discoloured, stained or foxed/
Pages décolorées, tachetées ou piquées |
| <input type="checkbox"/> Coloured maps/
Cartes géographiques en couleur | <input type="checkbox"/> Pages detached/
Pages détachées |
| <input type="checkbox"/> Coloured ink (i.e. other than blue or black)/
Encre de couleur (i.e. autre que bleue ou noire) | <input checked="" type="checkbox"/> Showthrough/
Transparence |
| <input type="checkbox"/> Coloured plates and/or illustrations/
Planches et/ou illustrations en couleur | <input type="checkbox"/> Quality of print varies/
Qualité inégale de l'impression |
| <input type="checkbox"/> Bound with other material/
Relié avec d'autres documents | <input type="checkbox"/> Includes supplementary material/
Comprend du matériel supplémentaire |
| <input type="checkbox"/> Tight binding may cause shadows or distortion along interior margin/
La reliure serrée peut causer de l'ombre ou de la distorsion le long de la marge intérieure | <input type="checkbox"/> Only edition available/
Seule édition disponible |
| <input type="checkbox"/> Blank leaves added during restoration may appear within the text. Whenever possible, these have been omitted from filming/
Il se peut que certaines pages blanches ajoutées lors d'une restauration apparaissent dans le texte, mais, lorsque cela était possible, ces pages n'ont pas été filmées. | <input type="checkbox"/> Pages wholly or partially obscured by errata slips, tissues, etc., have been refilmed to ensure the best possible image/
Les pages totalement ou partiellement obscurcies par un feuillet d'errata, une pelure, etc., ont été filmées à nouveau de façon à obtenir la meilleure image possible. |
| <input type="checkbox"/> Additional comments:/
Commentaires supplémentaires: | |

This item is filmed at the reduction ratio checked below/
Ce document est filmé au taux de réduction indiqué ci-dessous.

10X	12X	14X	16X	18X	20X	22X	24X	26X	28X	30X	32X
				✓							

The copy filmed here has been reproduced thanks to the generosity of:

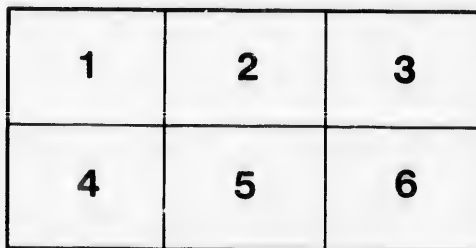
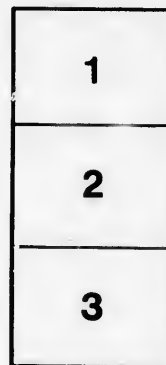
Library of the Public
Archives of Canada

The images appearing here are the best quality possible considering the condition and legibility of the original copy and in keeping with the filming contract specifications.

Original copies in printed paper covers are filmed beginning with the front cover and ending on the last page with a printed or illustrated impression, or the back cover when appropriate. All other original copies are filmed beginning on the first page with a printed or illustrated impression, and ending on the last page with a printed or illustrated impression.

The last recorded frame on each microfiche shall contain the symbol \rightarrow (meaning "CONTINUED"), or the symbol ∇ (meaning "END"), whichever applies.

Maps, plates, charts, etc., may be filmed at different reduction ratios. Those too large to be entirely included in one exposure are filmed beginning in the upper left hand corner, left to right and top to bottom, as many frames as required. The following diagrams illustrate the method:



L'exemplaire filmé fut reproduit grâce à la générosité de:

La bibliothèque des Archives
publiques du Canada

Les images suivantes ont été reproduites avec le plus grand soin, compte tenu de la condition et de la netteté de l'exemplaire filmé, et en conformité avec les conditions du contrat de filmage.

Les exemplaires originaux dont la couverture en papier est imprimée sont filmés en commençant par le premier feuillet et en terminant soit par le dernier page qui comporte une empreinte d'impression ou d'illustration, soit par le second feuillet, selon le cas. Tous les autres exemplaires originaux sont filmés en commençant par la première page qui comporte une empreinte d'impression ou d'illustration et en terminant par le dernier page qui comporte une telle empreinte.

Un des symboles suivants apparaîtra sur la dernière image de chaque microfiche, selon le cas: le symbole \rightarrow signifie "A SUIVRE", le symbole ∇ signifie "FIN".

Les cartes, planches, tableaux, etc., peuvent être filmés à des taux de réduction différents. Lorsque le document est trop grand pour être reproduit en un seul cliché, il est filmé à partir de l'angle supérieur gauche, de gauche à droite, et de haut en bas, en prenant le nombre d'images nécessaire. Les diagrammes suivants illustrent la méthode.

CELEBRATED IMPROVED

SLUTHOUR PUMP



ADOPTED BY THE UNITED STATES GOVERNMENT.

AWARDED THE



WORLD'S FAIR, VIENNA!

WORLD'S FAIR, PHILADELPHIA!

FOR SALE BY

GAUTHIER & CO.,

~~197~~ St. ~~James~~ St., Montreal.

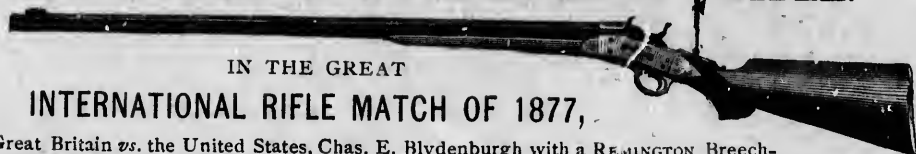
E. REMINGTON & SONS,

MANUFACTURERS OF

MILITARY, Hunting, Sporting, and Target Breech-Loading Guns, Rifles and Pistols. Also, Cartridges, Shells, Bullets, Primers, &c.

Also, Sewing Machines, Agricultural Implements, &c.

THE REMINGTON CREEDMOOR RIFLE.



IN THE GREAT

INTERNATIONAL RIFLE MATCH OF 1877,

Great Britain vs. the United States, Chas. E. Blydenburgh with a REMINGTON Breech-Loading Rifle made 429 points out of a possible of 450, the greatest score ever recorded. Also, Dudley Selph, New Orleans Team, made 219 out of a possible of 225.

REMINGTON'S.

REMINGTON'S

BREECH-LOADING DOUBLE-BARRELED GUN.



The best ever offered the American Sportsmen, combining all the most desirable features of the best imported, together with some valuable improvements not found in any other. Top-Lever, Snap-Action, Center-Fire. For sale by the trade everywhere.

(From the *Rod and Gun*, November 18, 1876.)

THE REMINGTON GUN.—Judge H. A. Gildersleeve, of the American Rifle Team, 1874, 1875, and 1876, thus writes under date of November 10:

I have just returned from the Big South Bay, where I have been gunning for ducks. I tried for the first time the Remington 10-gauge gun I purchased from you last summer. My success with it was excellent. In my judgment its shooting capacity cannot be surpassed. I want no better gun, and if I did I don't believe I could find it, even among the expensive grades of English guns.

H. A. GILDERSLEEVE.

REMINGTON'S NEW LINE REVOLVERS.

RIM or CENTER FIRE.



SEND FOR OUR

Illustrated Catalogue,

Treatise on Rifle Shooting & Price List.

DISCOUNT TO DEALERS ONLY.

Armory, Ilion, Herkimer Co., N. Y.

WAREHOUSES:

283 BROADWAY, New York. P. O. Box 3994. | 149 TREMONT STREET, Boston, Mass.
237 STATE STREET, Chicago, Ill. | 47 GERMAN STREET, Baltimore, Md.
54 QUEEN VICTORIA STREET, London, England.

S,

Guns,
&c.



, Dudley

S

ADING
RELED

N.



er date of

n 10-gauge
surpassed.

EEVE.



R

ogue,

List.

. Y.

ton, Mass.
more, Md.

*An inferior Pump will "make every drop
of water swear,"—as remarked by the Counsellor
Gonzago of Naples, on board the "Tempest."*

*Moral.—Choose the best Pump, and eschew
profanity.*

Oscillating Pump Company,

MANUFACTURERS OF THE

CELEBRATED IMPROVED

SLUTHOUR PUMP.

*Hump has heretofore rhymed with Pump in
poesy as in fact. That must now come to an end.
Stand erect and work like men of sense.*

FOR SALE BY

FAIRBANKS & CO.,

311 Broadway, New York.



The "Stand-upright" Pump.

Mercutio says to Romeo: "Thou hast worn out thy Pump." No wonder! Romeo was an active lad, and the pumps of Verona were destitute of the modern improvements.

THE "COMMON SENSE" PUMP.

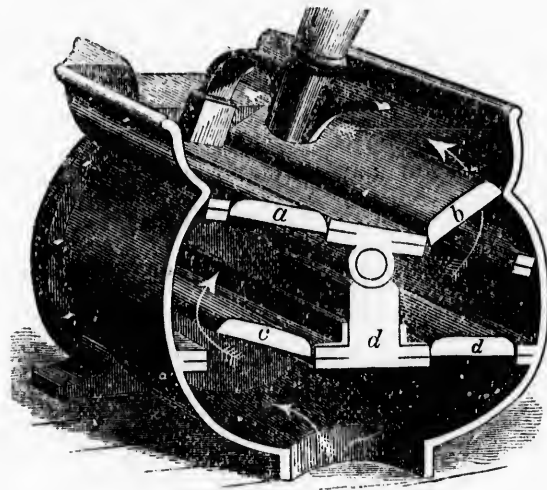
This Pump stands low upon its platform, the suction pipe extending down from the lower part of the chamber to the water.

The person using the pump stands erect, and moves the lever backward and forward, swaying the body so as to bring its weight in aid of the action. Great force may be thus exerted without violent exercise of muscular power.

Water is lifted and discharged at each stroke of the piston, which oscillates in the barrel-shaped chamber.

Man will harness a horse to a wagon so that the weight of the animal becomes useful in drawing the load.

Oh, for a Bergh to enforce pity on galled and strained Men!



*Figure illustrating the Interior and the Action of
the Pump.*

*Shakespeare refers to "Gabriel's Pumps,"—
which were nothing like these. "Tempora
mutantur et nos mutamur in illis." "Times
change, and Pumps are subject to the same laws."*

ACTION OF THE PUMP.

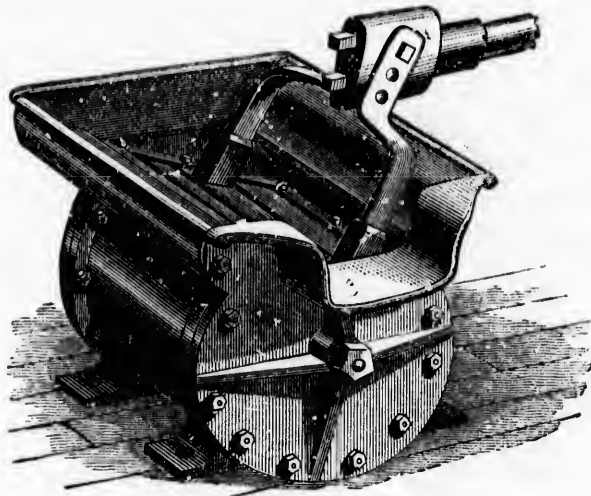
The oscillating piston has two flap valves, and beneath it is a stationary diaphragm having similar valves.

The Pump is double-acting. Each motion of the lever draws in water on one side of the chamber from the suction, and discharges water from the chamber on the other side.

In the cut, the lever is passing over to the right, and the water from the suction lifts the valve *c*, and flows into the left chamber; at the same time, water in the right chamber raises valve *b*, and flows above the piston. This water runs out at the spout when the lever makes its return motion, during which the valves *c*, *b*, will be down, and valves *a*, *d*, raised.

The Farmer threw away the sickle and welcomed the Cradle which he could swing erect.

We bring a blessing to the back-bowed Pumper.



*The Sluthour Lift Pump,
Adapted to be Worked by Power.*

Like the Clown in "Twelfth Night,"—this Pump "for all waters." The versatility of Olivia's Illyrian servant was however not as great as that of this Pump:—equally adapted for the Farm, the Ship, the Factory, and the Mine.

This Pump never clogs with

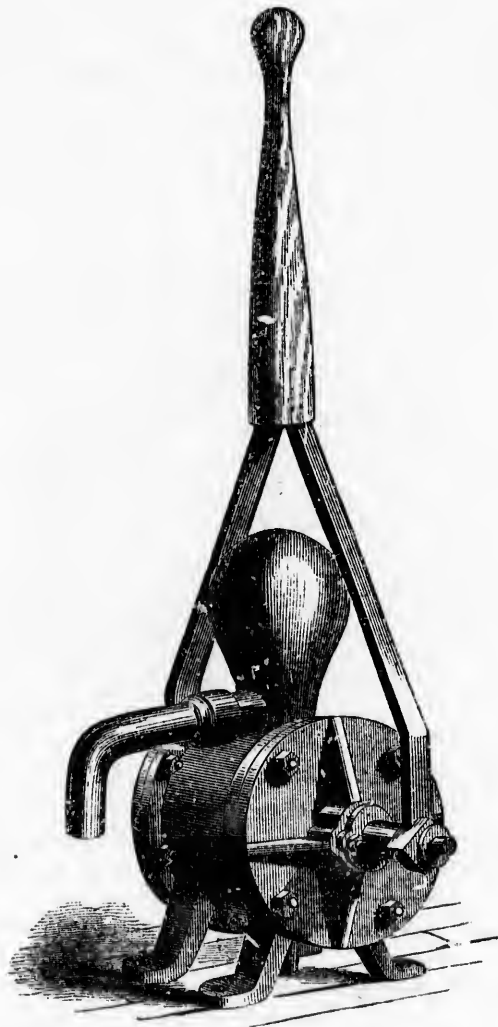
CHIPS,
SHAVINGS, CORN,
WHEAT, OATS,
HAY, RAGS.

Capacity from 40 to 500 gallons per minute.

Diameter of Cylinder.	Gallons per Minute.	Diam. of Suction Pipe.
No. 1.....8 inch.15 to 20.....2 inch.....
" 2.....10 "30 to 50.....3 ".....
" 3.....12 "50 to 70.....3½ ".....
" 4.....15 "250 to 350.....5 ".....
" 5.....18 "350 to 500.....6 ".....

Anything that will pass into the Suction will pass out at the Pump Valves.

A new dispensation in Pumps. An exercise as good as Indian Clubs—and much more useful.



The "Sluthour" Force Pump.

“Alas, now! I pray you, work not so hard”
—as the gentle Miranda said to the slave.

Men much better looking than Caliban have strained themselves unnecessarily with wretched pumps.

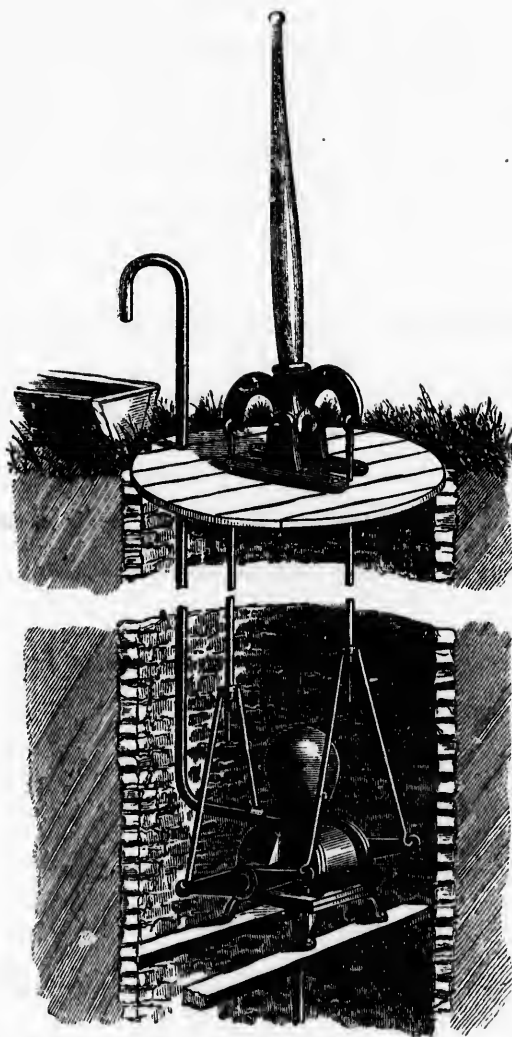
THE SLUTHOUR FORCE PUMP.

When used as a Force Pump, the pump barrel is closed on top, an air chamber put on to make the flow uniform, and an eduction pipe attached.

The handle is connected by a yoke to the axis of the pump piston, which is constructed as in the lift pumps shown on other pages.

The length of handle and construction of the pump enable a stream to be thrown with great force.

Nature has taught man to stand upright on his feet. The most effective mode of working is by a swaying action of the body, bringing the weight into play.



*The Sluthour Force Pump,
Adapted for Deep Wells.*

While other Pumps creak like the "Vengeful wagon of Tamora,"—in these "Smooth runs the water," as Suffolk says (in reference to an entirely different subject).

These Pumps are used for
 SHIPS,
 WELLS, MINES,
 CISTERNS, TANNERIES,
 BREWERIES, STOCK YARDS,
 LAUNDRIES, FARMES.

Capacity, from 5 to 100 Gallons per Minute.

Diam. of Cylinder.	Gallons per Minute.	Diameter of Suction Pipe.	Diameter of Discharge Pipe.
No. 1...4 inch.4 to 6....1 inch..... $\frac{3}{4}$ inch.....
" 2...6 "10 to 15....1 $\frac{1}{2}$ "1 "
" 3...8 "20 to 30....2 $\frac{1}{2}$ "1 $\frac{1}{2}$ "
" 4...10 "50 to 70....3 "2 $\frac{1}{2}$ "
" 5...12 "70 to 90....3 $\frac{1}{2}$ "3 "

FOR IRRIGATING PURPOSES IT HAS NO EQUAL.

We may say with Mercurio—We "Stand so much on the new form that we cannot sit at ease on the old bench."

International Exhibition, PHILADELPHIA, 1876.

The U. S. Centennial Commission has examined the report of the Judges, and accepted the following reasons, and decreed an award in conformity therewith.

PHILADELPHIA, March 13, 1877.

REPORT ON AWARDS.

Product :

FORCE and BILGE HAND PUMPS and FIRE ENGINES.

Name and Address of Exhibitor :

OSCILLATING PUMP COMPANY, PHILADELPHIA, PA.

The undersigned, having examined the product herein described, respectfully recommends the same to the Centennial Commission for award, for the following reasons :

SIMPLICITY, CHEAPNESS, EFFICIENCY.

W. H. BARLOW, Judge.

Approval of Group Judges.

N. PETROFF,
C. T. PORTER,

CHARLES E. EMERY,
JOSEPH BELKNAP,
F. REULEAUX.

HORATIO ALLEN,
EMIL BRUGSCH,

(A true Copy of the record.)

FRANCIS A. WALKER,
Chief of Bureau of Awards

Given by authority of U. S. Centennial Commission.

A. T. GOSHORN, *Director General.*

J. R. HAWLEY, *President.*

J. L. CAMPBELL, *Secretary.*

Report of Judges at the Second International Industrial Exhibition of the Mechanics' Institute.

To the Exhibition Committee:

GENTLEMEN:—The undersigned, Judges in department 5 and group 2, report that they carefully and impartially examined, according to "Instructions to Judges" transmitted to them, the several competing articles submitted to their judgment, and that the following are their conclusions. The best article of those intended to accomplish the same object is mentioned first, and the remaining articles of the same class in their relative order of merit:

No. 491, House Pump; No. 492, Well Pump; No. 493, Ship Pump; entered for competition by A. SLUTHOUR, Cleveland.

For Efficiency,

Accessibility of Working Parts,

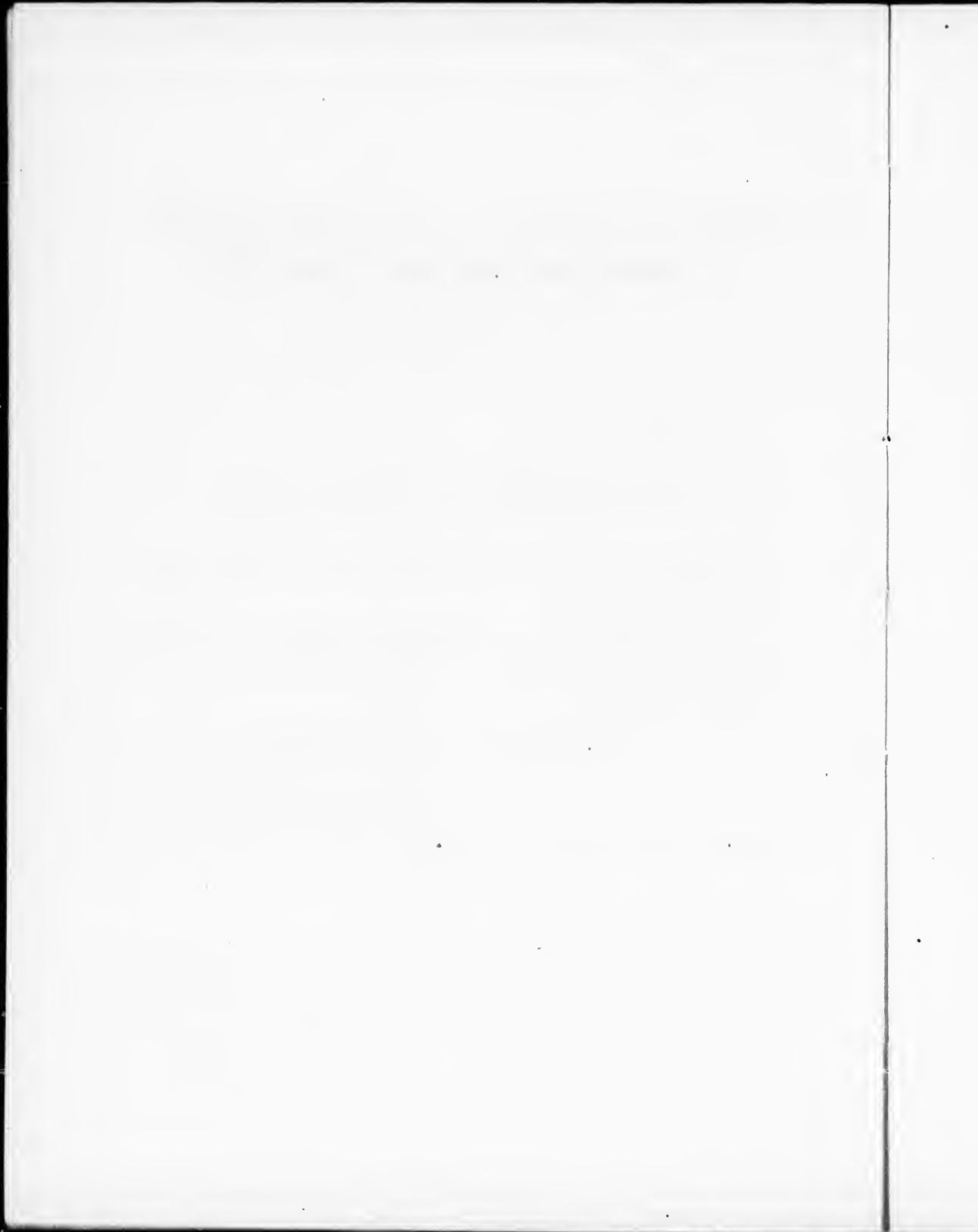
and Economy of Space.

The large size of the pump bucket admits of the use of valves much larger than usual, and the slow motion of the working parts renders its action very easy. We therefore deem it worthy of being awarded **the First Order of Merit.**

I hereby certify the above to be a correct copy of the Report of Judges on entry of 491, 492 and 493, and that they were awarded a large Medal, First Premium, for the best Hand Pump.

D. B. M'NISH,

Secretary.



TESTIMONIALS.

BALDWIN LOCOMOTIVE WORKS, PHILA.,
June 19th, 1877.

Messrs. FAIRBANKS & Co., 311 Broadway, New York,

Gentlemen :—Replying to your favor of the 15th inst., we are using a Bilge Pump manufactured by the Oscillating Pump Co., of Philadelphia, with very satisfactory results. We have bought two others for customers.

Very truly yours,
(Signed,) BURNHAM, PARRY, WILLIAMS & CO.

PHILADELPHIA WATER DEPARTMENT.

Dear Sir :—The Philadelphia Water Department have those three Sluthour Bilge Pumps in use, and find them to be the best Pump that they have ever used for the purpose for which adopted.

Yours truly,
JAS. F. NEALL,
Superintendent Shop.

The above is indorsed by

February 23, 1878.

WM. H. McFADDEN,
Chief Engineer, W. D.

3713 WALNUT STREET,
Philadelphia, June 23d, 1877.

Messrs. FAIRBANKS & Co.,

Gentlemen :—Your favor of the 21st inst. has been received, and in answer to your inquiries in regard to the Sluthour Pump, beg to say that I had three of the pumps in use from January, 1876, until June, 1876, and from the excellent service they performed I was led to recommend them to Mr. Edwards as being especially adapted for Bilge

Pumps. Having had a long, and at times very serious experience with the clogging of Bilge Pumps at the most critical moment on ship board, I can fully appreciate a pump that can be relied upon, as the *Sluthour Pumps* can be; besides they throw a larger volume of water than any Bilge Pump I have seen. We lifted the water 12 or 14 feet, and two men worked a pump that threw a volume of water equal to an ordinary ship's pump, that would have required three or four men to work. I consider their great value to consist in being able to pump chips, rags, and blocks of wood without clogging. Ships generally spring a leak in stormy weather, and the excessive rolling and pitching of a vessel dislodges every movable object in the bilge, and the current of bilge water to the pumps carries them along, so that in time the dirt collects around the pump suction pipes, and no pump is of any use, comparatively, without they can work it through them and overboard.

Very truly yours,
 (Signed,) JOHN S. ALBERT,
Col. of Engineers U. S. Navy.

INTERNATIONAL EXHIBITION, *Bureau of Administration.—Machinery.*
 Philadelphia, December 15, 1876.

OSCILLATING PUMP Co.,

Gentlemen :—We used three of your Bilge Pumps during the Exhibition, and take great pleasure in recommending them as the most reliable and powerful Pumps that I know of.

JOHN S. ALBERT,
 Chief of Bureau.
 Philadelphia, September 30, 1876.

OSCILLATING PUMP Co.,

Gentlemen :—The *Sluthour Pump* we got of you excels anything in the shape of hand-pumps I have ever seen. The one we have lifts the water, sand and dirt thirty-one feet, and does not clog at all; two men working it easily, discharging fifty gallons per minute. I am pleased to say we consider it superior to any pump in the market.

S. N. NEWCOMB,
Superintendent HALE, KILBURN & Co.
 48 and 50 N. Sixth Street.

Philadelphia, February 14th, 1877.

Gentlemen :—I take pleasure in certifying that after many years of experience in this city of pumping out cisterns, cellars, etc. (meanwhile using, I believe, every variety of pump manufactured), I have found none that can compare with your No. 4 (10-inch) Force Pump now in use by me. I can discharge a larger amount of water with it and throw it further with two men than with three men and any other pump I ever saw. I invite the skeptical to come and see my pump work.

Very truly yours,

JOHN SYMINGTON,
1426 Lombard Street.

OCEAN MILLS, NEWBURYPORT, MASS.

February 26, 1877.

Dear Sir :—Yours of the 24th inst. at hand. I think the pump referred to is a very good one. It will throw more water for the power exerted than any pump we ever had. I have two of them.

Yours,

A. D. CHANDLER, *Agent*.

Philadelphia, April 20th, 1877.

Gentlemen :—The 10-inch Bilge Pump we hired from you is working splendidly, lifting water, rock and sand 23 feet. It excels anything we have ever seen.

A. S. ALLSHOUSE, *Artesian Wells*,
Elm Avenue, opp. Main Exhibition Building.

INTERNATIONAL EXHIBITION, *Bureau of Administration—Machinery*.

Philadelphia, December 15th, 1876.

INTERNATIONAL EXHIBITION Co., *Bureau of Management*.

Philadelphia, July 16th, 1877.

Messrs. FAIRBANKS & Co.,

Gentlemen :—Yours of the 12th inst. is at hand, and in reply would say that my experience with pumps has been very extensive, and as regards the Oscillating Pump, beg to say, that I had one of the hand power

Oscillating Pumps in use during the Centennial, and it gave me perfect satisfaction. It is simple in its construction, and displaces a very large quantity of water. They have also hand power pumps.

Yours very truly,

(Signed,)

L. D. MORTON,

D. W. Supt. Machinery.

Germantown, October 9th, 1876.

Gents:—The 12-inch Bilge Pump we bought of you gives perfect satisfaction; it works admirably, lifting water, rock and sand 19 feet from our culvert. It is doing more with three men than two Douglas pumps we have with six men. We are free to say that we never saw a pump worked lift half the quantity of water with double the power.

P. & T. COLLINS,

Contractors for Main Sewer, 22d Ward, Phila.

Shippensburg, Pa., May 12th.

OSCILLATING PUMP Co.:

I take great pleasure in saying that the No. 2 Sluthour Pump I bought of you gives me the most perfect satisfaction. We had a fire here a few days ago, and I ran a hose up on my house 100 feet long, and watered my own and my neighbors' roofs completely. If I could not get another, I would not part with it for four times the price.

WM. T. S. JAMISON.

Philadelphia, January 25th, 1875.

It affords us great pleasure to state that your one-hundred gallon Bilge Pump lifted the water from a well in our basement, 24 feet deep, with a rapidity and ease that is truly wonderful. We cheerfully recommend your Pumps to the public as the best in the market, and doubt not all giving them a trial will be delighted with their working.

Respectfully yours,

L. & S. STERNBERGER,

503 Market Street.

This is to Certify, That I have been master of vessels and a seafaring man most of my life, and I have used many pumps and seen many. I purchased two of the No. 3 Sluthour Bilge Pumps, and I can safely say that they are far beyond anything in the market, as they are less liable to choke, and lift more water with much less power than anything I have ever come across, and I cheerfully recommend it to all and any one needing a pump.

WESTON GREGORY,
Capt. of Schooner Adela S. Hills.

PRICES OF FOOT VALVES.

For No. 1 Force Pump..... \$1 25	For No. 1 Bilge Pump..... \$2 50
“ 2 “ 1 75	“ 2 “ 3 75
“ 3 “ 2 75	“ 3 “ 5 00
“ 4 “ 3 75	“ 4 “ 10 00
“ 5 “ 5 00	“ 5 “ 12 00

PRICE LIST

OF

WROUGHT IRON PIPE.

Inside Diameter.	Per Foot.	Inside Diameter.	Per Foot.
$\frac{1}{8}$ inch.	6 cts.	2 inch.	31 cts.
$\frac{1}{4}$ “	6 “	$2\frac{1}{2}$ “	46 “
$\frac{3}{8}$ “	7 “	3 “	60 “
$\frac{1}{2}$ “	7 “	$3\frac{1}{2}$ “	80 “
$\frac{3}{4}$ “	9 “	4 “	1 00 “
1 “	$12\frac{1}{2}$ “	$4\frac{1}{2}$ “	1 25 “
$1\frac{1}{4}$ “	18 “	5 “	1 50 “
$1\frac{1}{2}$ “	22 “		

FAIRBANKS'
STANDARD SCALES.



THE WORLD'S STANDARD
SCALES! SCALES! SCALES!

ADAPTED TO ALL BRANCHES OF BUSINESS.

Principal Warehouses:

FAIRBANKS & EWING, 715 Chestnut Street, Philadelphia, Pa.

FAIRBANKS & CO., 311 Broadway, New York.

FAIRBANKS & CO., 166 Baltimore Street, Baltimore, Md.

FAIRBANKS & CO., 53 Camp Street, New Orleans.

FAIRBANKS & CO., 216 Main Street, Buffalo, N. Y.

FAIRBANKS & CO., 393 Broadway, Albany, N. Y.

FAIRBANKS & CO., 403 St. Paul Street, Montreal.

FAIRBANKS & CO., London, Eng.

FAIRBANKS, BROWN & CO., 83 Milk Street, Boston, Mass.

FAIRBANKS, MORSE & CO., 111 and 118 Lake St., Chicago.

FAIRBANKS, MORSE & CO., 139 Walnut St., Cincinnati, O.

FAIRBANKS, MORSE & CO., 182 Superior St., Cleveland, O.

FAIRBANKS, MORSE & CO., 43 Wood Street, Pittsburgh, Pa.

FAIRBANKS, MORSE & CO., Fifth and Main Sts., Louisville, Ky.

FAIRBANKS & CO., 302 and 304 Washington Ave., St. Louis.

FAIRBANKS & HUTCHINSON, San Francisco, Cal.



The WILLCOX & GIBBS New
"AUTOMATIC"
 SILENT SEWING MACHINE.

NO REGULATING OF TENSIONS.
NO PREPARATORY EXPERIMENTS.
NO ADJUSTING OF NEEDLES.
NO PREPARING OF SHUTTLES.
NO WINDING OF BOBBINS.
NO COAXING OR TESTING.

But **INSTANT** and **IMMEDIATE READI-
 NESS FOR ALL KINDS OF WORK.**

Come and see it *expecting much* and you will
 yet be astonished at its marvelous workings. It is
 far superior to any possible representation of it.

D. S. EWING,
 WHOLESALE and RETAIL DEALER,
 1127 CHESTNUT ST.,
 PHILADELPHIA.

"THE NEW HOME"

Is the Best Lock-Stitch

SEWING MACHINE

EVER MANUFACTURED.

It **Excels in Every Particular.**

This Machine is exceedingly light
 running and very quiet. It has a self-
 setting Needle, a device for winding
 bobbins without turning the machine,
 an Index Dial for regulating the stitch
 to any given length, and various other
 novelties.

**EXTRAORDINARY INDUCEMENTS
 ARE OFFERED TO AGENTS.**

D. S. EWING,
 1127 Chestnut St., Philadelphia.

