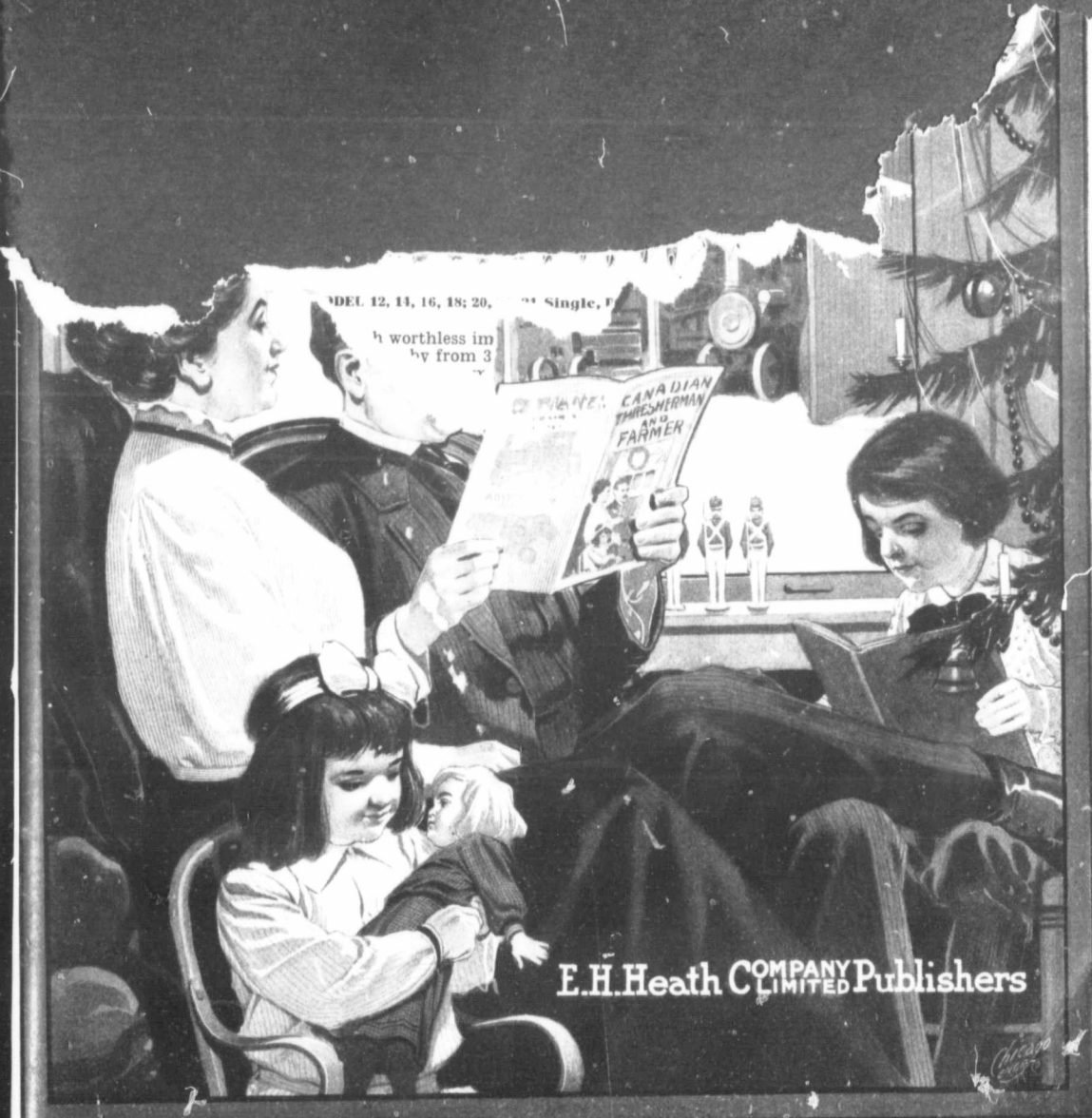


**PAGES
MISSING**



MODEL 12, 14, 16, 18; 20, ... Single, P

h worthless im
by from 3

OF PLANT: CANADIAN
THRESHERMAN
AND
FARMER

E.H. Heath COMPANY LIMITED Publishers

Heath



John Deere Engine Plows

JOHN DEERE LITTLE ENGINE PLOW,
4 and 6 Bottoms.

JOHN DEERE JUNIOR ENGINE PLOW,
6 and 8 Bottoms.

JOHN DEERE BIG ENGINE PLOW,
10, 12 and 14 Bottoms.



The ENGINE GANG is the plow for all day and all night work, all the year round, without fatigue. One medium-sized outfit will do what several teams and many hired men could never accomplish.

QUICK DETACHABLE SHARES.

On the ordinary Engine Plow many hours of valuable time are wasted in changing shares. By our new quick detachable arrangement provided on all plows they can be changed in one-fifth of the time taken on other makes.

JOHN DEERE PLOW CO. LTD.

Winnipeg

Regina

Calgary

Edmonton

Saskatoon

Lethbridge

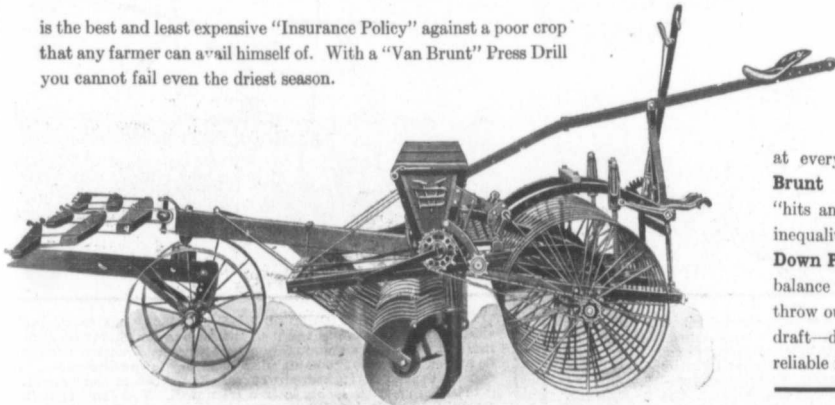
CIRCLE OF
DISC

...LATEST NEW MODEL 12, 14, 16, 18; 20, 22, 24 Single, Double Disc and Shoe, interchangeable

This is the original model from which worthless imitations have been made and foisted on the market, but the great prototype is stronger and lighter than these by from 300 to 400 pounds. The effect of the NEW BOOT DISCHARGE is to plant the seed at the exact depth for certain germination. Not a single grain is left on top of the soil or so near the surface that wind or shower can expose it.

THE VAN BRUNT PRESS DRILL

is the best and least expensive "Insurance Policy" against a poor crop that any farmer can avail himself of. With a "Van Brunt" Press Drill you cannot fail even the driest season.



End View of Single Disc Press Drill. Made in 7 inch Feeds—14, 16 and 18 sizes. Single and Double Disc and Shoe.

The real business of this great implement is to sow the grain at an **Even Depth** with a uniform pressure on the soil at every point. With the **Van Brunt Press Drill** there are no "hits and misses"—no bunching or inequality. It is the **Only Low Down Press Drill** having a perfect balance with an easy adjustment to throw out of gear. Extremely light draft—dust-proof disc bearings and reliable force feed.

WRITE FOR
DRILL CATALOGUES

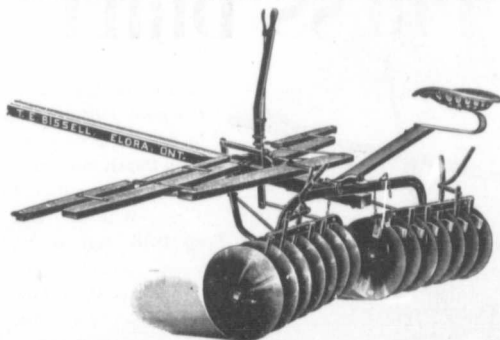
JOHN DEERE PLOW CO. LTD.

Winnipeg Regina Calgary Saskatoon Edmonton Lethbridge

The DEERE MODEL B HARROW is a perfect implement for any service, and is peculiarly adapted for use on uneven or stony ground. Its flexibility enables it to conform to any surface and to cultivate it evenly. The gangs act independently and every movement is under perfect control. When either gang of a MODEL B passes over an obstruction, it rises while the other remains at work, as though nothing had happened. The gangs may be set at any angle or each at a different angle to suit conditions. There need be no skipping rough places in the "middle." Other special features of MODEL B are:—Easy double spring seat; high frame out of dust; adjustable disc scrapers, lightest possible draft

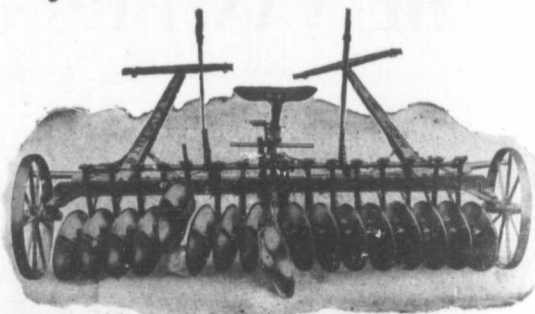
unusually substantial, but still possessing many of its distinctive features. Frame is made from a single piece of steel. Discs, crosstrees and braces are all steel securely bolted together. Made in 6, 7 and 8-foot widths, it is one of the most efficient two-lever harrows at work to-day. Hard Maple oil-soaked bearings are used on this harrow. The Disc Blades are of the very finest steel, and the Double Angling levers make it one of the most successful machines for lapping lands or hillside work.

Genuine Bissell Disc Harrow



This IN-THROW HARROW with its strong backbone, extremely light draft and great capacity, enjoys a well-earned popularity in Western Canada. Its accurate balance guarantees uniform work. The discs stay down at their work—there can be no buckling, binding or "bumping" in the centre. Forty hard Anti-friction Balls used in the "Bissell" affords immense relief to the draft, while the horses are further considered in the fact that the Hitch is put well back and no weight lies on the necks.

Cyclone Wheel Disc Harrow



The CYCLONE MOUNTED DISC HARROW has many individual points that commend it to the serious consideration of farmers in search of a thoroughly satisfactory field worker that can be moved from point to point without injury to the disc-edges. It can be backed or turned anywhere. Each disc is independent, fitted with pressure spring as in a grain drill. You can't beat it—scarcely equal it for discing stubble, summer fallow or plowed land. It is also a great weeder or cultivator. Discs can be set to any depth.

WRITE FOR LITERATURE, PRICES AND TERMS.

JOHN DEERE PLOW COMPANY, LTD.

Winnipeg

Regina

Calgary

Saskatoon

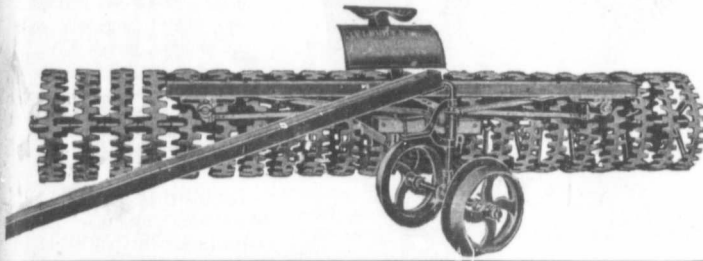
Edmonton

Lethbridge

LOST! A LOAD OF DEAD WEIGHT

Belonging to one of the best Soil Pulverizers ever built. Whoever finds it can keep it as its day of usefulness with us is done. In the world famous **Fleury Pulverizer and Packer** with its **New Roller Bearing Tongue Truck**, there is not one ounce weight of needless drag on the draft horses. Note these points in this

Complete Departure from anything else made



The **FLEURY PULVERIZER** with **NEW ROLLER BEARING TONGUE TRUCK**, in sizes 16-22-24, sections with or without Tongue Trucks. We can also supply any of these sizes with **SUB-SOIL WHEELS**

1. The jolting from uneven ground which, through the old rigid poles, fell directly on the horses' necks, is entirely borne by the **FREE OSCILLATING TONGUE TRUCK** which automatically accomodates itself to the slightest deviation of the Pulverizer.

2. **DUST PROOF ROLLER BEARINGS** take the place of the obsolete "friction" equipment of the two main axles and the **TWO DRAFT IRON BEARINGS**. These **ARE** made absolutely dirt-proof by close-fitting washers screened to both ends of bearing case.

3. The castings in which the roller bearings revolve are accurately **BORED**—not "cored," so that the bearings fit perfectly. In other makes the shafting "takes its chance" in the core of the casting. We use only the finest **REELED** shafting which is **clean and true throughout its entire length**, as distinguished from the common and irregular cast-shafting of competitive machines.

The effect of this revolution at these vital points of a pulverizer must be felt to be fully appreciated. The saving on draft is extraordinary—not to speak of wear and tear on machine. It means more work and better work with half the wear and sweat. It means ease and indurance in place of weight and wear.

Light Draft John Deere Gang Plow

HOW TO SELECT A PLOW. THE RULE OF FOUR.

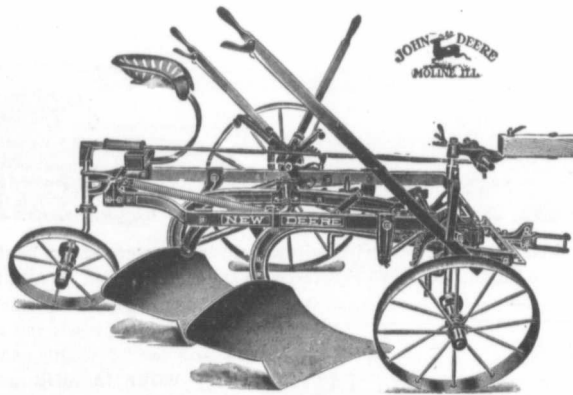
Plow quality does not improve with age.

An inferior plow does poorer work, is harder to pull, and costs more for repairs every year it is in use.

Because certain things about a plow cannot be changed for the better after you buy it, care and study before buying, is important.

Judging the real worth of a plow is not difficult if four things are kept in mind.

- First—Quality of work.
- Second—Ease of management.
- Third—Lightness of draft.
- Fourth—Strength and durability.



WHY THESE FOUR QUALITIES ARE THE TEST.

First—Nothing takes the place of good work. Unless a plow does perfect work you cannot afford to own it, no matter what the price.

Second—Have regard for your own comfort—that pays. Get a plow that is easy to ride, and that can be operated with little effort on your part.

Third—Never work horses harder than necessary. Horseflesh and horsefeed cost money. An extra one-eighth horse-power added to the draft will cost you the price of a plow—very soon.

Fourth—Repairs are expensive—a good plow lasts longer than a poor one.

The Light Draft New Deere—Why it Pulls Easy

Consider five things when judging the draft of a plow. **First**—the shape of the bottom. **Second**—Material out of which it is made. **Third**—Equal weight on all the wheels. **Fourth**—Proper adjustments. **Fifth**—Staunchness of the plow.

WRITE FOR LITERATURE, PRICES AND TERMS.

JOHN DEERE PLOW COMPANY, LTD.

Winnipeg

Regina

Calgary

Saskatoon

Edmonton

Lethbridge

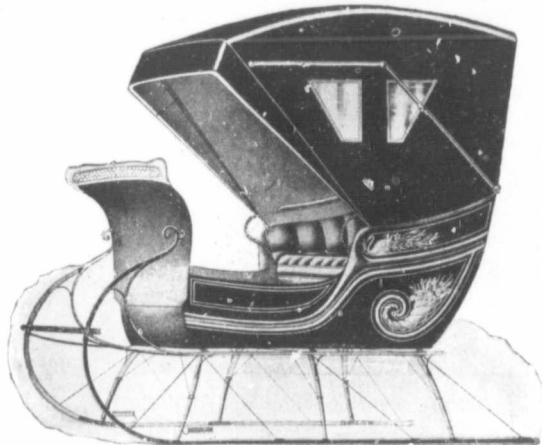
Utility : Style : Comfort

ON THE SNOW BOUND TRAIL.

The worst inconvenience of travelling in a Canadian winter is more than compensated by the single experience of a

Brockville Cutter.

For the City Street or the "top of the frozen trail", there are few things the world over that can take its place. Nothing can surpass it.



Its whole construction and finish is a work of art. Every detail is of the very best quality. Skilled workmen only are employed on the

Brockville Cutter

and the most generous treatment is accorded those smaller particulars that are skimmed or veneered in other makes to detriment.

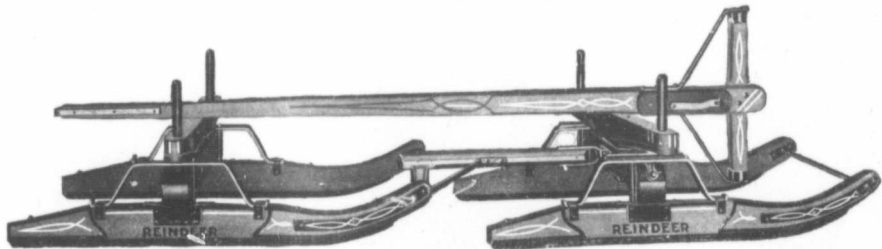
The Best, and, therefore, the only thing worth Buying.

The body of a Brockville Cutter is of:—White Ash Frames; Three ply Dash, Back and Side Panels—the Panels screwed and glued to frame. Gears:—XXX Hickory Knees and beams. Steel Braces and Steel Channel Shoes. Shifting Rod on Detachable bar shafts. Trimming of the Best Grade Plush or Wool-dyed Cloth. Removable Spring Backs.

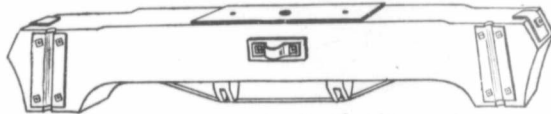
Reindeer Sleighs

are at once the greatest sprinters and the most sure-footed runners that ever took the top of the roadway of ice and snow. For real hard service, hard wear and easy travelling, they are the best winter roadsters going.

This cut represents the **JOHN DEERE No. 28½ Reindeer Sleigh**. It is made in all sizes to meet every possible requirement in winter haulage—with Steel or Cast Shoes.



BOLSTERS are equipped with iron stakes—fastened with bolts and rivets to prevent ends of bolsters from splitting. **ROLLER RODS** for tongue and reach are full length. **BOLSTER PLATES** large and made of steel. **START PINS** are $\frac{3}{4}$ in., plates rivetted to outside of runners prevent start pins from splitting. **RUNNERS**: Front inside end of runners is plated to save wear and tear of tongue and reach rollers as well as rod holes. **WORKMANSHIP** and **MATERIAL** all of the **VERY BEST**.



WRITE, OR SEE THE NEAREST JOHN DEERE DEALER.

JOHN DEERE PLOW COMPANY, LTD.

WINNIPEG

REGINA

CALGARY

SASKATOON

EDMONTON

LETHBRIDGE

Inte
Se

Aut

GR

For Sal
Division
**Watn
wrih**
of **Tof
Scott**
of Gran
between

The I
Ltd., is
sale of
or Subdi
follow

REG
MOO
MED
LET
NOR
CAN
WEY
ENT
LAC
VOR
SWII

Inquir
parties s
in any of
Towns.
afford sp
ness and
informat
ool
any of
mailed f

Interna

Somerse

F
HMcMIL
WI
WRE
DRAPE

International Securities Co., Limited.

Authorised and Exclusive Agent of

GRAND TRUNK PACIFIC

For Sale of its Townsite Lots in Divisional Points of **Melville, Watrous, Biggar, Wainwright**, and Junctional Point of **Tofield**, and as Town of **Scott**, all located on Main Line of Grand Trunk Pacific Railway between Winnipeg and Edmonton.

The International Securities Co., Ltd., is the owner or manager for sale of other important Townsites or Subdivisions to Cities or Towns, follows:

REGINA, SASK.
MOOSE JAW, SASK.
MEDICINE HAT, ALTA.
LETHBRIDGE, ALTA.
NORTH BATTLEFORD, SASK.
CANORA, SASK.
WEYBURN, SASK.
ENTWISTLE, ALTA.
LACOMBE, ALTA.
YORKTON, SASK.
SWIFT CURRENT, SASK.

Inquiries are solicited from parties seeking a sound investment in any of above named Cities and Towns. Many of these places afford splendid openings for business and professional men. Full information will be freely furnished, booklets, maps, etc., regarding any of these Cities or Towns, mailed free upon request.

International Securities Co. Limited.

Somerset Building, Winnipeg, Man.

SHIP YOUR
FURS
AND
HIDES
TO
McMILLAN FUR & WOOL CO.
272 BURET STREET
WINNIPEG - MANITOBA
WRITE FOR CIRCULAR
TRAPPERS GOING FREE TO THOSE WHO
SHIP TO US

A Christmas Greeting from The Canadian Thresherman and Farmer to You

What a world of good cheer ripples through the air,
Surcharged with the spirit of this glad season!
It is coming older; it is coming to-night!
On the snowflakes which cover the sod.
The feet of the Christ-child fall gentle and white,
And the voice of the Christ-child tells utmost delight,
That men are the children of God.

Do you not catch that wonderful something that thrills the great round world as you ring out your greeting or hear the salutation from others? It is a glorious occasion, and we who live in this day and generation should feel truly thankful that we are allowed to enjoy its privileges in freedom. It is, in fact the memorial day of a commercial age. Then, as on no other day, we face with compassion those who have fallen in our battles for wealth.

For a moment think of the thousands of children who have no share in the easy life we give our children, and who must find the season's joy in the charity dinner. Along with the barter to which we have debased our giving within the circle of our acquaintances, we play at extending the spirit of the day to those who are the refuse of our industrial game. We give a trifle to help the poor temper the bitterness of the year with an hour or two hours' good eating.

However sincere we may be in our efforts to spread Christmas cheer, our charity is none the less a testimony of the fact that Peace and Goodwill has not come upon the earth. Poverty and wretchedness are not to be off-set by yearly gifts of baskets of food and out grown clothes. We ought to make the spasmodic kindness of Christmas one of the constant forces of our work-a-day life. The qualities of fraternity are not born of charity but of justice.

Instead of commercializing Christmas, we should Christianize commercialism.

We do not pretend to be prophets, but we can all bear to hope, and this is what we hope: "That some day the strong will help and not exploit the weak; that some day fraternity will mean more than the desire of one man to become acquainted with another for the reason of the dollar; that some day love will beget justice, rather than charity."

Christmas cometh to the farmer and likewise to the thresherman as the last milestone of the year. Just around the bend is the beginning of another road, 365 days in length. The time glass must be given another turn and old Father Time registers another gap in his sickle. Christmas comes on

the wane of the old year. Colder and colder—days rapidly shortening—less and less sun. Summer warmth and life seem to be ebbing away for ever. Suppose it should never stop, and day finally disappear in everlasting night! So the first man, in his first year, must have thought.

After the 21st of December there is no sign of release. Every day has been shorter than the last. But on the twenty-second there is a difference. The almanac now tells us that we shall have three days of equal length. Perhaps, after all, the sun will go no further away. That is now the best we can hope for, but the evening of the twenty-fourth comes and, joy of mankind! The day is longer! The tide of darkness has turned. We are not to be swept away by it. The sun is coming back! We can stand the frost of winter cheerfully now, for we know that summer will rise from the dead. Christmas is the promise of Easter, wafted back across the snow.

Let us gather round the festive board on this Memorial occasion with as near a feeling of kinship and goodwill to all mankind as it is possible for human nature to muster. Let us be satisfied with the feeling that our lot has been cast in a place that might have been considerably worse, but let us not be contented with the drifting down the stream of another year. Let each of us help the good time forward, and Christmas tells us how.

This is the season of the year for exercising the brotherhood spirit—that is the source of peace and goodwill—that is the sun which must rise out of the valley of darkness and drive away the shadows there—that is the tide which will at last reach the high water mark of human happiness and make equality and fraternity real.

Let us fill ourselves with the Christmas spirit and carry it with us through the busy year.

May "1912" come to you as the happiest, healthiest and most prosperous year of all your existence. May your granaries be full; may your life in 1912 be an everlasting song; may your efforts be rewarded in every particular, is the sincere wish of THE CANADIAN THRESHERMAN AND FARMER to all of its readers.

Lunkenheimer Pop-Safety Valves

Do not waste steam as they relieve the over pressure only

They can be regulated to reduce the pressure only one pound, if such close regulation is desired. The improved construction of the valves prevents chattering and sticking and adjustment of the pop and pressure can be made from the outside of the valve.

Lunkenheimer Pop-Safety Valves have full relieving capacity and are positive in operation.

Either brass or iron body valves can be had, and they are made in all standard sizes for working pressures up to 250 pounds.

Write for Catalogue J. Your Local Dealer can furnish them, if not, write us.



THE LUNKENHEIMER COMPANY

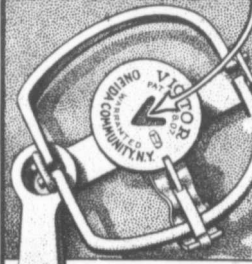
Largest Manufacturers of High-Grade Engineering Specialties in the world.

General Offices and Works: CINCINNATI, OHIO, U.S.A.

BRANCHES: NEW YORK—64-68 Fulton Street

CHICAGO—32 Dearborn St., cor. Lake LONDON, S.E.—35 Gt. Dover

See the V



And Make \$25 a Week Trapping this Fall VICTOR TRAPS

are sure to go and sure to hold. Every genuine Victor Trap is pierced with a "V"

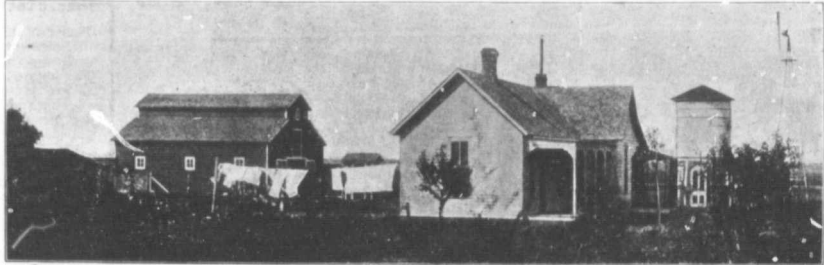
Ask your Dealer "Insist on the V"

OUR OFFER

One Thresherman's Settlement Book and the Canadian Thresherman and Farmer one year for

ONE DOLLAR

MERRY CHRISTMAS-FARMERS AND THRESHERMEN



Here is a picture of what Sawyer-Massey Machines and Industry will do for you.

You have had a fairly successful season, so have we. We rejoice with you that the crops were not a complete failure, and, are looking forward to greater success and prosperity next year.

The success and prosperity of our customers, the satisfaction our goods have given, the large number of orders already in, justify this optimism, and the faith we have in our machines.

You know it is a mighty fine feeling, and, we know you can have the same feeling if you let Sawyer-Massey Machines do your work and help you to the success, prosperity, and happiness you wish for.

You will have the time and the opportunity during the next few months, to give careful thought and study to your machinery requirements, and the methods you will adopt in your farming operations next Spring and Summer.

You should consider very carefully the big question of power farming. It opens up channels of unlimited opportunities, besides, it will increase your income, and reduce your work.

Have you ever stopped to think of the many ways in which a Sawyer-Massey Plowing and Threshing Outfit would be profitable to you?

Our Outfits are earning hundreds of dollars, yes thousands of dollars, for many men throughout this broad Dominion, men who had the foresight, energy, push, and nerve to take hold and secure for themselves some of the good and profitable things that surround us all.

You may be so situated, that fuel is not handy, and water is scarce. You should then have a Gasoline Engine. When considering this question remember we have to offer you the new Sawyer-Massey Gasoline Engine, and the British Colonial or Marshall Tractor.

The above picture recalls to our minds many of our customers who with our outfits, and by industry, have made for themselves just such homes, and this leads us to ask, What are you doing about that family of boys growing up around you? Again we ask—Have you considered the many ways in which a Sawyer-Massey Plowing and Threshing Outfit would be profitable to you?

You are ambitious, and anxious to do something for your sons as well as yourself, why not therefore decide now, and go at it in a farsighted, methodical, businesslike way.

Our Engines and Separators last for years. By the time your boys are ready to go to college, you have the money to send them. They may be naturally inclined towards Engineering, and only need the practical experience. What will it not mean to them to have had the opportunity of assisting and working around a Plowing and Threshing Outfit in their early boyhood days? You cannot tell, nor can we, the possibilities are unlimited.

You now, are not going to be the man to withhold these opportunities, besides you are earning money, and getting your own work done efficiently and cheaply. You can also do your neighbors plowing and threshing, as well as your own.

You and your horses need not work like slaves if you own a Sawyer-Massey Machine.

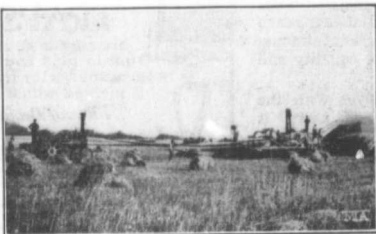
For a few dollars now, you have an opportunity to open up these avenues of advantage, for yourself and family. Do you not think this is a question to which you can well afford to give your most thoughtful consideration? We know it will pay you to own a Sawyer-Massey Outfit.

Write us for particulars. Catalogues and Circulars gladly mailed free upon request. Our terms are easy, and well within your reach.

SAWYER-MASSEY CO., LIMITED

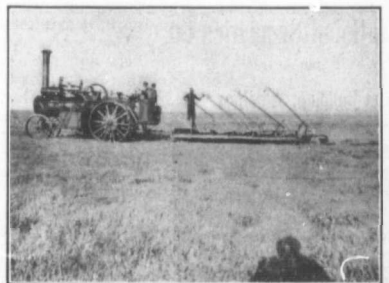
Factories and
Head Office

Hamilton, Ontario.



This is one way Sawyer-Massey Machines do it.

Western Branch:
UNION BANK
BUILDING,
WINNIPEG
MAN.



This is another way.

There are many others.