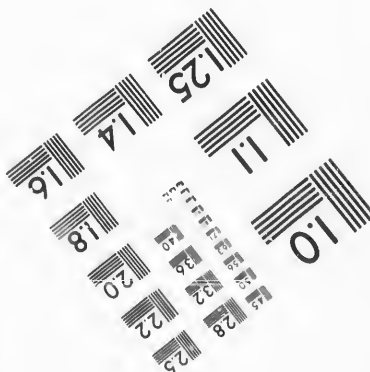
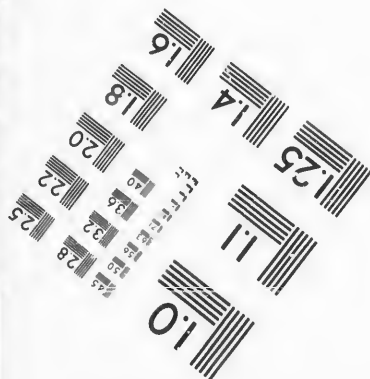
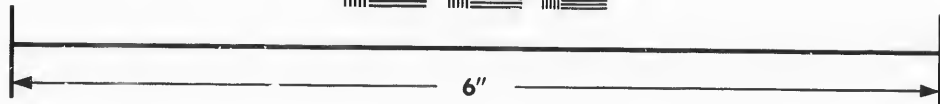
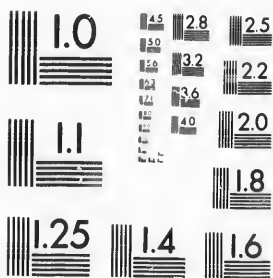


**IMAGE EVALUATION
TEST TARGET (MT-3)**



**Photographic
Sciences
Corporation**

23 WEST MAIN STREET
WEBSTER, N.Y. 14580
(716) 872-4503

1.5
1.8
2.0
2.2
2.5
2.8
3.2
3.6

**CIHM/ICMH
Microfiche
Series.**

**CIHM/ICMH
Collection de
microfiches.**



Canadian Institute for Historical Microreproductions / Institut canadien de microreproductions historiques

10

© 1987

Technical and Bibliographic Notes/Notes techniques et bibliographiques

The Institute has attempted to obtain the best original copy available for filming. Features of this copy which may be bibliographically unique, which may alter any of the images in the reproduction, or which may significantly change the usual method of filming, are checked below.

L'Institut a microfilmé le meilleur exemplaire qu'il lui a été possible de se procurer. Les détails de cet exemplaire qui sont peut-être uniques du point de vue bibliographique, qui peuvent modifier une image reproduite, ou qui peuvent exiger une modification dans la méthode normale de filmage sont indiqués ci-dessous.

- | | |
|--|--|
| <input checked="" type="checkbox"/> Coloured covers/
Couverture de couleur | <input type="checkbox"/> Coloured pages/
Pages de couleur |
| <input type="checkbox"/> Covers damaged/
Couverture endommagée | <input type="checkbox"/> Pages damaged/
Pages endommagées |
| <input type="checkbox"/> Covers restored and/or laminated/
Couverture restaurée et/ou pelliculée | <input type="checkbox"/> Pages restored and/or laminated/
Pages restaurées et/ou pelliculées |
| <input type="checkbox"/> Cover title missing/
Le titre de couverture manque | <input checked="" type="checkbox"/> Pages discoloured, stained or foxed/
Pages décolorées, tachetées ou piquées |
| <input type="checkbox"/> Coloured maps/
Cartes géographiques en couleur | <input type="checkbox"/> Pages detached/
Pages détachées |
| <input type="checkbox"/> Coloured ink (i.e. other than blue or black)/
Encre de couleur (i.e. autre que bleue ou noire) | <input checked="" type="checkbox"/> Showthrough/
Transparence |
| <input type="checkbox"/> Coloured plates and/or illustrations/
Planches et/ou illustrations en couleur | <input type="checkbox"/> Quality of print varies/
Qualité inégale de l'impression |
| <input type="checkbox"/> Bound with other material/
Relié avec d'autres documents | <input type="checkbox"/> Includes supplementary material/
Comprend du matériel supplémentaire |
| <input type="checkbox"/> Tight binding may cause shadows or distortion
along interior margin/
La reliure serrée peut causer de l'ombre ou de la
distorsion le long de la marge intérieure | <input type="checkbox"/> Only edition available/
Seule édition disponible |
| <input type="checkbox"/> Blank leaves added during restoration may
appear within the text. Whenever possible, these
have been omitted from filming/
Il se peut que certaines pages blanches ajoutées
lors d'une restauration apparaissent dans le texte,
mais, lorsque cela était possible, ces pages n'ont
pas été filmées. | <input type="checkbox"/> Pages wholly or partially obscured by errata
slips, tissues, etc., have been refilmed to
ensure the best possible image/
Les pages totalement ou partiellement
obscurcies par un feuillet d'errata, une pelure,
etc., ont été filmées à nouveau de façon à
obtenir la meilleure image possible. |
| <input type="checkbox"/> Additional comments:/
Commentaires supplémentaires: | |

This item is filmed at the reduction ratio checked below/
Ce document est filmé au taux de réduction indiqué ci-dessous.

10X	14X	18X	22X	25X	30X
<input type="checkbox"/>	<input type="checkbox"/>	<input type="checkbox"/>	<input type="checkbox"/>	<input checked="" type="checkbox"/>	<input type="checkbox"/>
12X	16X	20X	24X	28X	32X

The co
to the

The im
possib
of the
filming

Origina
beginn
the las
sion, o
other c
first p
sion, a
or illus

The las
shall c
TIN/JE
which

Maps,
differe
entirel
beginn
right a
require
metho

The copy filmed here has been reproduced thanks to the generosity of:

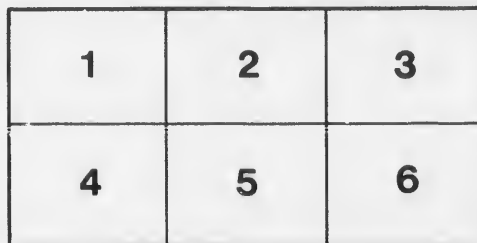
The Nova Scotia
Legislative Library

The images appearing here are the best quality possible considering the condition and legibility of the original copy and in keeping with the filming contract specifications.

Original copies in printed paper covers are filmed beginning with the front cover and ending on the last page with a printed or illustrated impression, or the back cover when appropriate. All other original copies are filmed beginning on the first page with a printed or illustrated impression, and ending on the last page with a printed or illustrated impression.

The last recorded frame on each microfiche shall contain the symbol \rightarrow (meaning "CONTINUED"), or the symbol ∇ (meaning "END"), whichever applies.

Maps, plates, charts, etc., may be filmed at different reduction ratios. Those too large to be entirely included in one exposure are filmed beginning in the upper left hand corner, left to right and top to bottom, as many frames as required. The following diagrams illustrate the method:



L'exemplaire filmé fut reproduit grâce à la générosité de:

The Nova Scotia
Legislative Library

Les images suivantes ont été reproduites avec le plus grand soin, compte tenu de la condition et de la netteté de l'exemplaire filmé, et en conformité avec les conditions du contrat de filmage.

Les exemplaires originaux dont la couverture en papier est imprimée sont filmés en commençant par le premier plat et en terminant soit par la dernière page qui comporte une empreinte d'impression ou d'illustration, soit par le second plat, selon le cas. Tous les autres exemplaires originaux sont filmés en commençant par la première page qui comporte une empreinte d'impression ou d'illustration et en terminant par la dernière page qui comporte une telle empreinte.

Un des symboles suivants apparaîtra sur la dernière image de chaque microfiche, selon le cas: le symbole \rightarrow signifie "A SUIVRE", le symbole ∇ signifie "FIN".

Les cartes, planches, tableaux, etc., peuvent être filmés à des taux de réduction différents. Lorsque le document est trop grand pour être reproduit en un seul cliché, il est filmé à partir de l'angle supérieur gauche, de gauche à droite, et de haut en bas, en prenant le nombre d'images nécessaire. Les diagrammes suivants illustrent la méthode.

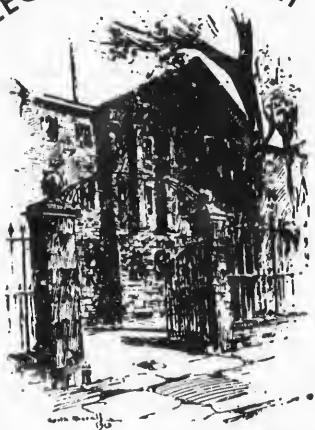
ST. JOHN'S NEW LIVERPOOL



NS
387.
5221
F

FURNESS WILBY & CO. LTD.

NOVA SCOTIA
LEGISLATIVE LIBRARY



PROVINCE HOUSE

7.90



S. S. "Newfoundland"

T
B

C

th

pl
to

34
w
an
a
fr

C
b
ca

TWO NEW PASSENGER LINERS for the "FURNESS" SERVICE

Between BOSTON, HALIFAX, N. S., ST. JOHN'S, NFL'D, and LIVERPOOL, ENGLAND

THE steamers "*Nova Scotia*" and "*Newfoundland*" were built to special order by the well-known firm of Vickers, Ltd., of Barrow-In-Furness, for Messrs. Furness, Withy & Company's passenger and freight service between Boston, Halifax, N. S., St. John's, (Newfoundland), and Liverpool, England, and no expense has been spared to make them attractive in every respect.

These two fine ships open up a new and comfortable route to and from the great summer playgrounds in Nova Scotia and Newfoundland, and also offer a unique voyage to England.

The "*Nova Scotia*" and the "*Newfoundland*" are 423 feet long, 55 feet beam, 34 feet moulded depth, and register 7,000 gross tons, were constructed under the supervision of Lloyds', and are classed 100 A1. And although they have an average speed of 15 knots they are steady and free from vibration.

Ample accommodations have been provided for 100 Cabin Class and 80 Third Class passengers. On the bridge deck there are eighteen two-bed cabins and two cabins-de-luxe, with bath and other accessories, supplying



the acme of comfort at sea. The other staterooms in the Cabin Class are on the upper deck amidships. Here also is the palatial dining room with many small tables, accommodating all the passengers at one sitting. The cuisine and service are in keeping with the tasteful surroundings of this charming room. Other public rooms include a smoking room, bar, lounge, and music room, with luxurious furnishings and decorations. The lounge and music room are finished after the Adam period. The smoking room is in walnut of the William and Mary period, topped with an ornate skylight, a popular rendezvous for the men, distinctive for its air of congeniality.

Everywhere there is perfect ventilation by the Gibbs system, and the lighting and heating leave nothing to be desired. All the first-class rooms have running water. Thus the comfort of the passengers is satisfied in every way.

There is plenty of deck space for promenading or participating in one of the numerous games that supply both exercise and pleasure at sea.

Every contrivance for safety and sanitation has been adopted. Each ship carries wireless operators, one being on duty at all times.

For perfection of travel at sea, the "*Nova Scotia*" and "*Newfoundland*" compare favorably with the finest ships on the ocean. They furnish an ideal way to reach the summer vacation paradises of Nova Scotia and Newfoundland, and supply comfortable and attractive accommodations to ocean travelers between Boston and Liverpool, an ideal route between the United States and England.

FURNESS WITBY & CO. LTD



Main Companionway



Cabin Stateroom with Two Beds

Ideal Route to Romantic Vacation Grounds

NOVA SCOTIA and NEWFOUNDLAND are now acknowledged to be the perfect vacation grounds for summer tourists who have but a short time to spare from the grind and bustle of modern industry. For those who get but two weeks, there is ample time to make this tour.

A great feature connected with a visit to these romantic and historic regions is the thousand-mile ocean voyage that carries the vacationist from Boston to Halifax, N. S., and thence to St. John's, N. F., the nearest point to the Old World across the Atlantic. Add to this the genuine comfort and attractiveness of

the new "Furness" steamers the "*Nova Scotia*" and the "*Newfoundland*," and you will find your vacation trip ideal.

There is nothing to compare with a sea trip to renew the energy that the rush of business wears down. Ocean air is a great health-giver, the salt tang supplying the "pep" that you like to take back to the office with you to show that your vacation was the success you had hoped it would be. On the Halifax-St. John's route the steamers swing far out into the wide Atlantic, giving all the thrill and pleasure of a transatlantic trip.

FURNESS WITTHY & CO. LTD



Dining Saloon



Sambro Light, N S

With the Bay of Fundy on one side and the Atlantic Ocean, with its mild temperature from the Gulf Stream, on the other, salubrious indeed are the breezes that blow over the peninsula, filling with cheer the visitor to Nova Scotia, known in its early days as the beautiful land of Acadia.

The city of Halifax is perched upon a great rock which protrudes out into the sea, rising at the citadel to a height of 256 feet. The view is a splendid one from the deck of the ship as it steams into the harbor.

There is much to see in Halifax. Especially delightful are the drives to the coves and beaches of the northwest arm. A pleasing sight is St. Paul's Church, built more than two centuries ago. The old and the modern forts also engage attention. The "Grand Parade," in the center of the city, dates from 1749, when Halifax was a camp with a palisade

around it to defend the British within from the French and Indians without. The old Martello Tower near Halifax is in a fine state of preservation.

Across Nova Scotia from Halifax, on the Basin of Minas, is the village of Grand Pré and the scenes of the Great Banishment in 1755. It is called the land of Evangeline, and was

FURNESS WITTHY & CO. LTD



Smoking Room

BOSTON · HALIFAX · ST. JOHN'S, N'FLD. · LIVERPOOL



Entrance to the Lounge

FURNESS WITHY & CO. LTD



The Lounge

BOSTON · HALIFAX · ST. JOHN'S, N.F.L.D. · LIVERPOOL

immortalized by Longfellow in his beautiful poem. Evangeline's Well and other relics of the long gone by days may still be seen.

Annapolis Royal, also on this side of the great peninsula, is a busy city with many French inhabitants. The grass-grown ramparts of the ancient fort invite inspection, while the officers' quarters contain many old war relics. The valley here is famous for its apples, peaches and plums. The town is the gateway to an enchanting lake district.

Other interesting points in Nova Scotia are Digby, renowned for its cherries, and Yarmouth, where Leif the Lucky left his imprint when he visited here in the 10th century.

Cape Breton Island, with its scenic Bras d'Or district, is well worth the journey. So is Louisberg, with its romantic and historic ruins.

The island of Newfoundland, lying far out in the Atlantic, was the first place on the American continent to be visited by members of the English-speaking race, and is Great Britain's very oldest colony. Historic, charming, it might properly be called the summer garden of North America. The climate of June, July, August and early September is similar to that of the delightful winter months in Florida.

The sea coast of Newfoundland excels that of Norway, which it resembles in many ways. For hundreds of miles it has stupendous cliffs rising sheer out of the sea, being intersected with bays, inlets, rivers and fine harbors. Inland the scenery is of indescribable grandeur. There are wide valleys, high hills and mountains, and majestic forests.

It is the angler's mecca and the hunter's paradise. There are numerous lakes and streams, where every species of trout abound; also the rivers will yield a good fare of the

gamy salmon. For the sightseer or tourist the combination of mighty sea coast and picturesque interiors makes the beauty of the whole seem more like an illusion than a reality.

The city of St. John's, capital of Newfoundland, is situated on the easternmost part of the island, really on the extreme eastern tip of the North American continent. One of the sights of the town is the new hotel, a seven-story building covering the site of Fort William, which was originally built in 1618. It overlooks the city and supplies delightful views of Quidi Vidi Lake and the beautiful landscape surrounding it, and also a fine outlook over the narrows, with the huge rock cliffs on either side.

Tourists who visit Newfoundland in the summer will see something entirely different, something they cannot see elsewhere so near home on the usual beaten paths of the summer vacationists.

The scenic loveliness of Nova Scotia and Newfoundland lies within the reach of the vacationist who has but two weeks in which to regain vigor enough to last until the next year's vacation period. It costs less than many much shorter trips, and supplies all the charm and health-giving effects of a transatlantic voyage.

Although catering to summer vacationists and tourists who like to spend one or another season in either Nova Scotia or Newfoundland, the steamships "*Nova Scotia*" and "*Newfoundland*" were designed and built for transatlantic travel between Boston and Liverpool, the calls at Halifax and St. John's being made because of the great demand for short sea trips. This demand is especially heavy during the summer because of the ease with which the visit can be made in two weeks or less, and the ample opportunities provided for sightseeing.

BOSTON · HALIFAX · ST. JOHN'S, N'F'LD · LIVERPOOL



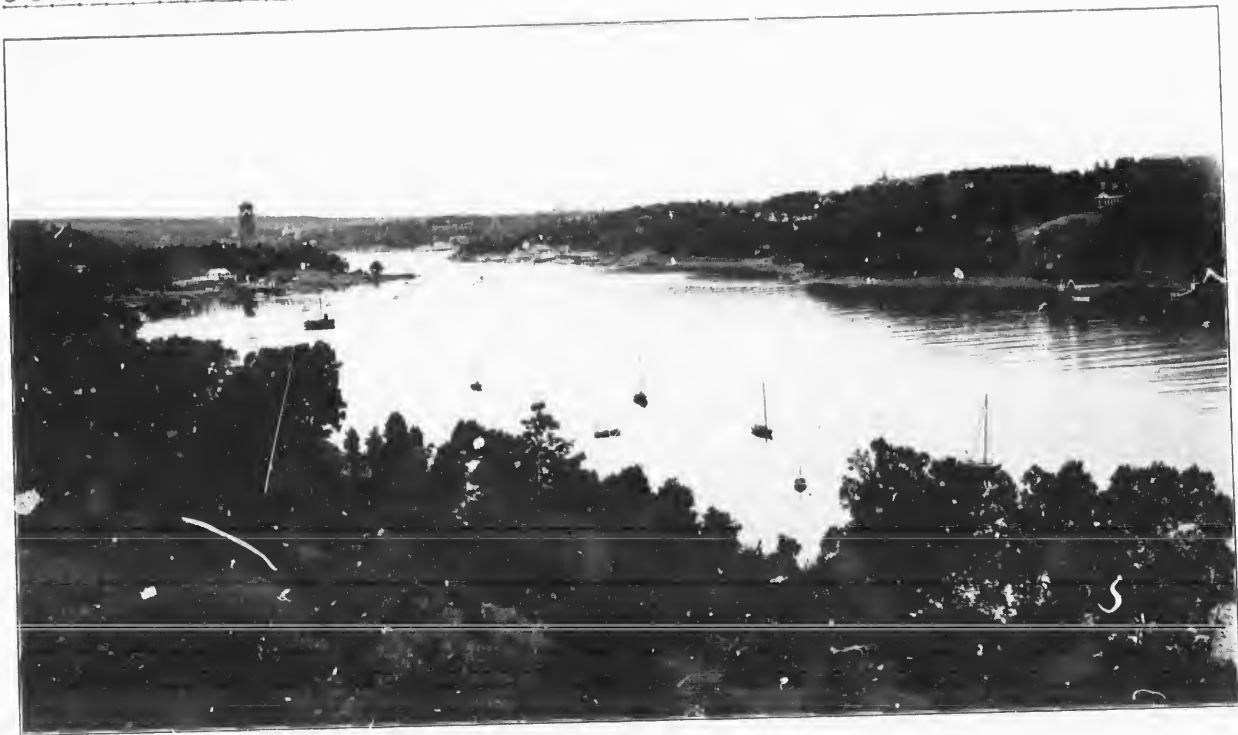
Enclosed Promenade

FURNESS WITHY & CO. LTD



The Beautiful Gaspereaux Valley

BOSTON · HALIFAX · ST. JOHN'S, N'FLD · LIVERPOOL



North West Arm, Halifax Harbor

FURNESS WITBY & CO. LTD



The Land of Evangeline

BOSTON · HALIFAX · ST. JOHN'S, N.F.L.D. · LIVERPOOL



Fishing Village, St. John's, Newfoundland

An
Excite
Mom



Typical Newfoundland Scenery



*In
the
Land
of
Acadia*



*An
Exciting
Moment*



Waterford River, Near St. John's, Newfoundland

BOSTON · HALIFAX · ST. JOHN'S, N.F.L.D. · LIVERPOOL



The Landing Stage, Liverpool, England

FURNESS WITHY & COMPANY, LIMITED

FURNESS HOUSE

34 Whitehall Street, New York, N. Y.

American Offices

BALTIMORE	24 South Street
BOSTON	10 State Street
CHICAGO	307 N. Michigan Avenue
NEWPORT NEWS	River Road
NORFOLK	Bankers Trust Building
PHILADELPHIA	Public Ledger Building
SAN FRANCISCO	Balfour Building, California Street
SEATTLE	Burehard & Fisker
PORTLAND, ORE	Burehard & Fisker



Canadian Offices

HALIFAX	71 Upper Water Street
MONTREAL	43 St. Saerament Street
ST. JOHN'S, N. F.	Water Street, East
ST. JOHN N. B.	22 King Street
SYDNEY, C. B.	Pitt Street
TORONTO	Royal Bank Building
VANCOUVER	Standard Bank Building, Hastings Street

Printed in U. S. A.

