

**CIHM
Microfiche
Series
(Monographs)**

**ICMH
Collection de
microfiches
(monographies)**



Canadian Institute for Historical Microreproductions / Institut canadien de microreproductions historiques

© 1998

Technical and Bibliographic Notes / Notes techniques et bibliographiques

The institute has attempted to obtain the best original copy available for filming. Features of this copy which may be bibliographically unique, which may alter any of the images in the reproduction, or which may significantly change the usual method of filming are checked below.

- ☐ Coloured covers / Couverture de couleur
- ☐ Covers damaged / Couverture endommagée
- ☐ Covers restored and/or laminated / Couverture restaurée et/ou pelliculée
- ☐ Cover title missing / Le titre de couverture manque
- ☐ Coloured maps / Cartes géographiques en couleur
- ☒ Coloured ink (i.e. other than blue or black) / Encre de couleur (i.e. autre que bleue ou noire)
- ☒ Coloured plates and/or illustrations / Planches et/ou illustrations en couleur
- ☐ Bound with other material / Relié avec d'autres documents
- ☐ Only edition available / Seule édition disponible
- ☐ Tight binding may cause shadows or distortion along interior margin / La reliure serrée peut causer de l'ombre ou de la distorsion le long de la marge intérieure.
- ☐ Blank leaves added during restorations may appear within the text. Whenever possible, these have been omitted from filming / Il se peut que certaines pages blanches ajoutées lors d'une restauration apparaissent dans le texte, mais, lorsque cela était possible, ces pages n'ont pas été filmées.
- ☐ Additional comments / Commentaires supplémentaires:

L'Institut a microfilmé le meilleur exemplaire qu'il lui a été possible de se procurer. Les détails de cet exemplaire qui sont peut-être uniques du point de vue bibliographique, qui peuvent modifier une image reproduite, ou qui peuvent exiger une modification dans la méthode normale de filmage sont indiqués ci-dessous.

- ☐ Coloured pages / Pages de couleur
- ☐ Pages damaged / Pages endommagées
- ☐ Pages restored and/or laminated / Pages restaurées et/ou pelliculées
- ☒ Pages discoloured, stained or foxed / Pages décolorées, tachetées ou piquées
- ☐ Pages detached / Pages détachées
- ☒ Showthrough / Transparence
- ☐ Quality of print varies / Qualité inégale de l'impression
- ☐ Includes supplementary material / Comprend du matériel supplémentaire
- ☐ Pages wholly or partially obscured by errata slips, tissues, etc., have been refilmed to ensure the best possible image / Les pages totalement ou partiellement obscurcies par un feuillet d'errata, une pelure, etc., ont été filmées à nouveau de façon à obtenir la meilleure image possible.
- ☐ Opposing pages with varying colouration or discolourations are filmed twice to ensure the best possible image / Les pages s'opposant ayant des colorations variables ou des décolorations sont filmées deux fois afin d'obtenir la meilleure image possible.

This item is filmed at the reduction ratio checked below /
Ce document est filmé au taux de réduction indiqué ci-dessous.

10x		14x		18x		22x		26x		30x	
						✓					
	12x		16x		20x		24x		28x		32x

The copy filmed here has been reproduced thanks to the generosity of:

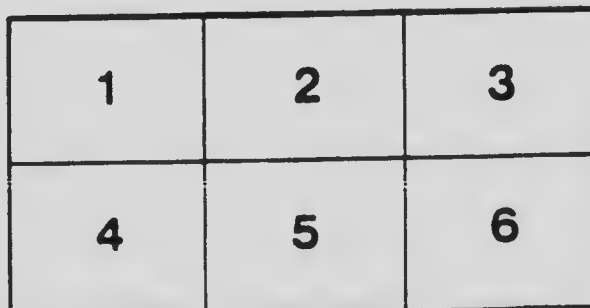
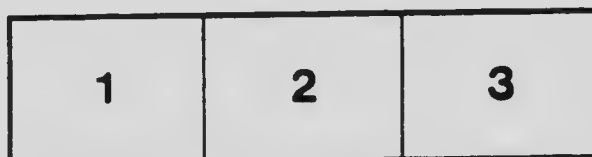
Stauffer Library
Queen's University

The images appearing here are the best quality possible considering the condition and legibility of the original copy and in keeping with the filming contract specifications.

Original copies in printed paper covers are filmed beginning with the front cover and ending on the last page with a printed or illustrated impression, or the back cover when appropriate. All other original copies are filmed beginning on the first page with a printed or illustrated impression, and ending on the last page with a printed or illustrated impression.

The last recorded frame on each microfiche shell contain the symbol ➡ (meaning "CONTINUED"), or the symbol ▼ (meaning "END"), whichever applies.

Maps, plates, charts, etc., may be filmed at different reduction ratios. Those too large to be entirely included in one exposure are filmed beginning in the upper left hand corner, left to right and top to bottom, as many frames as required. The following diagrams illustrate the method:



L'exemplaire filmé fut reproduit grâce à la générosité de:

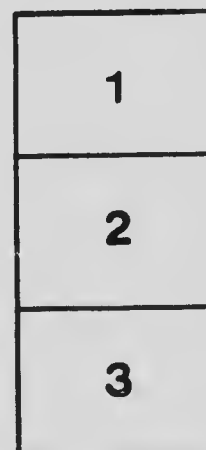
Stauffer Library
Queen's University

Les images suivantes ont été reproduites avec le plus grand soin, compte tenu de la condition et de la netteté de l'exemplaire filmé, et en conformité avec les conditions du contrat de filmage.

Les exemplaires originaux dont la couverture en papier est imprimée sont filmés en commençant par le premier plat et en terminant soit par la dernière page qui comporte une empreinte d'impression ou d'illustration, soit par le second plat, selon le cas. Tous les autres exemplaires originaux sont filmés en commençant par la première page qui comporte une empreinte d'impression ou d'illustration et en terminant par la dernière page qui comporte une telle empreinte.

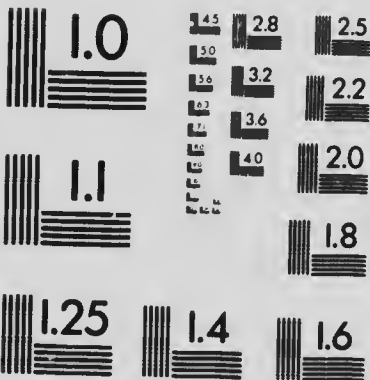
Un des symboles suivants apparaîtra sur la dernière image de chaque microfiche, selon le cas: le symbole ➡ signifie "A SUIVRE", le symbole ▼ signifie "FIN".

Les cartes, planches, tableaux, etc., peuvent être filmés à des taux de réduction différents. Lorsque le document est trop grand pour être reproduit en un seul cliché, il est filmé à partir de l'angle supérieur gauche, de gauche à droite, et de haut en bas, en prenant le nombre d'images nécessaire. Les diagrammes suivants illustrent la méthode.



MICROCOPY RESOLUTION TEST CHART

(ANSI and ISO TEST CHART No. 2)



APPLIED IMAGE Inc.

1653 East Main Street
Rochester, New York 14609 USA
(716) 482-0300 - Phone
(716) 288-5989 - Fax

PRIZE LIST



**DOMINION EXPOSITION
REGINA
1911**

F515. F11. R325

PRIZE LIST

OF THE

DOMINION

EXPOSITION

To be held in the City of

R E G I N A

SASKATCHEWAN

JULY 31st---AUG. 12th

(INCLUSIVE)

1911

Under the auspices of the Regina
Agricultural and Industrial
Exhibition Association,
Limited.

Dominion Exposition

REGINA, SASKATCHEWAN, 1911

PATRON

His Honor the Lieutenant Governor of Saskatchewan

HONORARY DIRECTORS

Hon. Sydney Fisher	A. E. Whitmore,	F. W. G. Haultain, K.C.,
Hon. Walter Scott	M.L.A.	M.L.A.
W. M. Martin, M.P.	Hon. W. R. Motherwell	F. C. Tait, M.L.A.
	His Worship Mayor McAra	

DIRECTORS

S. Beach	George Kinnon	J. R. Peverett
W. G. V. Bishop	H. C. Lawson	J. C. Pope
J. F. Bole, M.L.A.	G. H. Marsh	F. J. Robinson
P. M. Bredt	John A. Mooney	J. W. Smith
A. B. Cook	Alex. Mutch	R. H. Taber
J. F. L. Embury	H. F. Mytton	J. D. Traynor
A. Hammond	E. A. McCallum	J. A. Wetmore
F. H. O. Harrison	M. McCausland	Geo. R. Whitmore
P. Horn	R. McKell	W. M. Williamson
A. T. Hunter	J. L. R. Parsons	J. M. Young
J. K. Hunter	W. R. W. Parsons	
W. F. Kerr	T. B. Patton	

COMMITTEES, 1911

His Worship Mayor McAra *ex officio* member of all Committees

Finance---W. G. V. Bishop, J. F. L. Embury, Robert Martin

Advertising---T. B. Patton, J. M. Young, J. K. Hunter, W. F. Kerr,
E. A. McCallum

Racing---J. A. Wetmore, H. C. Lawson, J. L. R. Parsons, S. Beach,
W. M. Williamson

Complimentary---The Executive

Improvements---J. R. Peverett, L. L. Kramer, J. K. Hunter, P. M.
Bredt, F. J. Robinson

Attractions---A. T. Hunter, A. B. Cook, Geo. R. Whitmore

Prize List---P. M. Bredt, R. H. Taber, J. A. Wetmore, John A.
Mooney, H. C. Lawson

Reception and Entertainment---J. W. Smith, W. G. V. Bishop,
P. M. Bredt

Accommodation---A. T. Hunter

Donors of Special Prizes

1. Aberdeen Angus Cattle Society, Banff, Scotland—the Society's major silver medal.
2. Canadian Ayrshire Breeders' Association, Huntingdon, Quebec—\$100.
3. Canadian Farm, Toronto, Ont.—Two silver tea sets (value \$40 each).
4. Canadian Pacific Railway Co.—\$100.
5. Canadian Northern Railway Co.—\$250.
6. Capital City Flour Mills, Regina, Sask.—\$50.
7. Clydesdale Horse Society of Great Britain and Ireland—Two gold medals.
8. Clydesdale Horse Association of Canada—\$400.
9. Canadian Bank of Commerce, Regina Branch—Two silver medals.
10. Farmers' Advocate, Winnipeg, Man.—One gold and one silver medal and \$25.
11. Manitoba Free Press, Winnipeg, Man.—Silver challenge cup (value \$75) and silver medals.
12. Grand Trunk Pacific Railway Co.—\$100.
13. The Hackney Horse Society, 12 Hanover Square, London, W., England—Silver medal.
14. American Hackney Horse Society, New York—Two silver medals.
15. Canadian Hackney Horse Society—\$100 and two silver medals.
16. American Hereford Cattle Breeders' Association—\$200.
17. Canadian Hereford Breeders' Association—\$50.
18. Holstein Friesian Association of Canada—\$100.
19. Hunters' Improvement Society, 12 Hanover Square, London, W., England—Silver medal.
20. Imperial Bank of Canada, Regina Branch—Silver cup.
21. International Harvester Co. of America, Regina Branch—Oliver No. 1 high lift sulky plough (value \$64).
22. The King's Hotel, Regina, Sask.—\$25.
23. A. E. McKenzie Co., Ltd., Seedsmen, Brandon, Man., and Calgary, Alta.—\$30.
24. The Nor'West Farmer, Winnipeg, Man.—Silver Cup (value \$50).
25. Office Specialty Co., Ltd., Regina Branch—Set of sectional book cases (value \$25).
26. Oxford Down Sheep Breeders' Association, Oxford, England—Silver medal.
27. American Oxford Down Record Association, Hamilton, Ohio—\$45.
28. Canadian Percheron Horse Breeders' Association—Three silver cups and two gold medals.
29. Petrie Manufacturing Co.—6,000 sheets "Magnet" cream separator butter paper.

Entries close July 8th, 1911

302894

30. Canadian Red Polled Association, Winnipeg, Man.—\$25.
31. M. Rumely Co., Laporte, Indiana, Regina Branch—A twelve barrel steel water tank, mounted on four inch steel trucks with double trees and neckyoke, equipped with tank pump (value \$200).
32. The Shetland Pony Stud Book Society, Aberdeen, Scotland—Two medals bearing the special die of the Society.
33. The Canadian Shire Horse Association, Toronto, Ont.—\$100.
34. The Shire Horse Society, 12 Hanover Square, London, W., England—Two silver medals.
35. The Steele Briggs Seed Co., Winnipeg, Man.—\$30.
36. Suffolk Horse Society, Woodbridge, Suffolk, England—Two medals for championships.
37. Von's Hotel, Regina, Sask.—\$25.
38. Ayrshire Cattle Herd Book Society of Great Britain and Ireland, Ayr, Scotland—Two silver medals.
39. The Leader Publishing Co., Regina, Sask.—Silver cup (value \$100).
40. Robert M. Moore & Co., Vancouver, B.C., and Regina, Sask.—Lights (value \$46).
41. Canadian Pony Society, Toronto, Ont.—Four silver medals.
42. Dominion Shorthorn Breeders' Association—\$800.
43. Ontario Large Yorkshire Swine Breeders' Association, Toronto, Ont.—\$30.
44. Ontario Berkshire Breeders' Society, Toronto, Ont.—\$30.
45. Canadian Thoroughbred Horse Society, Toronto Ont.—\$25.
46. Ontario Sheep Breeders' Association—Silver medals, as championships in sheep classes to the value of \$150.

General Rules and Regulations

Read carefully the following Rules as well as conditions of Entry Forms.

The Exhibition will be open to the public on Tuesday, August 1st, at two o'clock, and will remain open each day, except Sunday, from 9 a.m. until 10 p.m., up to and including Saturday, August 12, 1911.

ENTRIES AND ENTRY FEES

1. Entries close July 8th. All entries by mail must bear the postmark of the date of closing (or earlier) of the Regina post office.

2. Entries received after this date will be charged double fees and cannot be guaranteed to be entered in the live stock catalogue. This rule will be strictly enforced. The management will not hold themselves responsible for providing suitable stabling for late entries.

3. All entries must be on the printed form supplied for that purpose. The particulars called for on these Entry Forms must be fully supplied, and be written in clear legible writing and properly signed by the exhibitor or his duly authorised agent. In case of pure bred animals it is absolutely essential that the correct record numbers be given.

4. The entrance fee must in all cases be forwarded with the entry. No entry will be accepted unless this is done. Fees should be sent by money order or in bills in registered letter at the risk of the exhibitor. A form of entry is affixed after the last page in the Prize List, and similar forms can be obtained from the Manager.

5. Exhibitors will please take notice that it is absolutely required that the entries be made on or before the date above mentioned, in order to afford sufficient time to examine the entry papers, to correspond with parties when necessary, and for the correction of errors and omissions.

6. The following shall be the entrance fees:

Stallion, 3 years and over.....	\$2.00
Stallion, under 3 years.....	1.00
All other horses, 3 years and over.....	1.00
All other horses, under 3 years.....	.50
Ponies, each.....	.50
Teams and harness horses.....	1.00
Bulls, 2 years and over.....	1.50
Bulls, under 2 years.....	.75
All other cattle, 2 years and over.....	1.00
All other cattle, under 2 years.....	.50
Herds or collections (pure bred).....	free
Champion or special prizes.....	free

Entries close July 8th, 1911

Sheep, per head.....	.25
Swine, per head.....	.25
Agricultural and dairy produce, one entry.....	.25
Agricultural and dairy produce, each additional entry.....	.10
Natural history, one entry.....	.25
Natural history, each additional entry.....	.10
Ladies' work and domestic manufactures, one entry.....	.15
Ladies' work and domestic manufactures, each additional entry.....	.10
Plants and flowers, each entry.....	.10

7. Prize winners only will be allowed to compete for championships, and no entry will be necessary, the same.

8. On the entry of each article, a perforated card (entry ticket) will be furnished the exhibitor, specifying in duplicate the class, section and number of the entry, one-half to be torn off and retained by the exhibitor, the other half to be attached to such exhibit and so remain during the Exhibition. The duplicate ticket must be produced to secure the return of the exhibit at the close of the Exhibition.

9. The entry ticket will be mailed if there is sufficient time for same to reach exhibitor; if not, they may be obtained from the office on the grounds when the exhibits are brought in.

10. Exhibitors must be careful that entry tickets are securely and conspicuously attached to their exhibits, otherwise the exhibits may not be considered in the awarding of prizes.

11. In horses, cattle, sheep, swine and poultry classes the entry must in every instance be made in the name of the actual owner, and unless this rule be observed no premium will be awarded, or, if awarded, will be withheld. In all the other classes, entry must be made in the names of the producers or manufacturers, and by such producers themselves, in person or their agents, who must have special authority for so doing. Those who are not manufacturers or authorised agents may exhibit, but they cannot compete for the prizes offered.

12. Any exhibitor shall, if required by the Board, make a statutory declaration that the exhibits made by him are shown in accordance with the Rules and Regulations of the Association; in case any exhibitor refuses to make such declaration on being requested, all premiums awarded him shall be forfeited. No person shall be allowed to enter for competition more than one specimen in any one section of a class, unless the additional article should be of a distinct variety or pattern from the first. **THIS RULE DOES NOT APPLY TO ANIMALS.**

EXTRA ENTRIES

13. Every exhibit must be entered under some one of the headings in the regular list, when possible; but if any exhibit is of a distinct character from anything in the list, it may be entered in the class with which it most nearly corresponds.

14. Entries for articles not named in the Prize List will be received, and may be recommended for extra prizes at the discretion of the judges; but the Association does not bind itself to make any awards for such exhibits.

Entries close July 8th, 1911

TRANSPORTATION OF EXHIBITS

All articles sent by express prepaid will be delivered on the grounds without extra charge.

Freight on carload exhibits originating in Canada will be refunded by the Regina Agricultural and Industrial Exhibition Association subject to the following conditions:

- (a) The regular one way rate must be prepaid by the exhibitor.
- (b) Transportation charges on exhibits sent by freight will be refunded, provided that the entire exhibit does not change ownership and is returned to original point of shipment.
- (c) The exhibitor must see that the lowest single rate is charged and that the exhibit comes the cheapest route, as refund will be based on this.
- (d) No refund will be made on horses entered in the racing events.
- (e) If an exhibitor disposes of a portion of his stock and sends the balance back to the original point of shipment (without having to pay extra freight charges) a pro rata refund of freight will be made for number returned.
- (f) Refund of freight will only be made after the exhibit returns to the original point of shipment and on presentation of the original shipping bill, showing the amount paid for freight and No. 1 freight expense bill, showing that the shipment has been delivered to exhibitor at the original point of shipment.

DELIVERY OF LIVE STOCK AND ARTICLES AT GROUNDS

15. All exhibits must be on the grounds not later than 9 a.m. on the first day and must remain to the close of the Exhibition. No exhibit of any kind must be removed until the close of the Exhibition; except in the fruit, floral or vegetable sections, when such a removal is necessary to a continuous display.

16. Exhibitors of machinery and other heavy articles are requested to have them on the grounds and placed in position at least two days previous to the opening of the Exhibition.

17. All boxes, wrappings and other packing material must be cleared away and everything be in proper order before 9 a.m. Tuesday, August 1st.

18. All animals must be submitted to veterinary examination on entering the grounds if required. No animal having a contagious disease shall be admitted to the Exhibition grounds, and if any animal has been admitted through an oversight, suffering from any such disease, the management shall immediately order its removal from the grounds.

19. Articles not accompanied by their owners may be addressed to the Association, who will receive them on their being delivered to the Exhibition grounds and place them in their allotted places as above. Exhibitors arriving with their exhibits will apply at the general office, when they will be informed where the articles are to be placed.

20. Though the Association will take reasonable precaution to insure the safety of exhibits sent to the Exhibition, it is to be dis-

Entries close July 8th, 1911

tingly understood that the owners themselves must take the risk of exhibiting them and that should any exhibit or portion thereof be injured, lost or stolen, the Association will give all the assistance in its power towards recovery of the same, but will not be liable therefor nor make any payment for the value thereof.

21. Exhibitors will at all times give the necessary personal attention to whatever they have on exhibition and at the close take entire charge of same.

LIVE STOCK

22. Good buildings are provided on the grounds for live stock. Straw for bedding and water will be furnished free of charge. Hay and grain will be for sale on the grounds at the lowest prices. Exhibitors will please report at once any case of extortion.

23. The production of any of the animals may be ordered by the Directors in charge for review or other purposes at any time during the Exhibition; and an exhibitor or attendant refusing or neglecting to bring such animal out as directed shall forfeit his entry fees and any premiums that may have been awarded him.

JUDGES AND JUDGING

Judges are particularly requested to adhere to the following rules:

24. Judges in the several departments will kindly report at the office on the grounds at 9.30 a.m. on Wednesday, August 2nd.

25. No person will be allowed to act as judge who is in any way interested in the exhibits to be examined.

26. Judging will commence on Wednesday, August 2nd, at 10 a.m.

27. Exhibitors must ascertain from the managers of the several departments at what hour judging will take place, therefore, no complaint or appeal based upon the statement that the judges have overlooked exhibits will be considered.

28. In all classes where certificates of registration are required, the same must be produced to the Director in charge, if asked for, before the judging takes place.

29. Judges will sign and hand in their lists of awards as soon as possible, making such recommendations as circumstances or their experience may suggest. A competent clerk will be provided for each judge to write up the judge's book and distribute the award cards.

30. In the absence of competition in any section or if the article or stock exhibited be of inferior quality the judges shall award only such premiums as they think the article or stock merits. They will exercise their discretion as to whether they will award the first, second or any premium. Judges are particularly requested to note this fact.

31. In addition to the stated premiums offered, judges may also distinguish such exhibits as they consider deserving of notice by tickets or ribbons with the words "Highly Commended" upon them. This will not entitle such exhibits to any money payment.

Entries close July 8th, 1911

The judges are requested to name a reserve in all sections in case of a protest being sustained.

32. An exhibitor lodging a protest must make it in WRITING. It must be delivered to the Secretary Treasurer BEFORE 10 A.M. THE DAY FOLLOWING THE CAUSE OF PROTEST, and a receipt must be obtained. A protest must state plainly the cause of complaint or appeal and must be accompanied by a deposit of \$5, which sum shall be forfeited to the Association if the said protest is not sustained.

33. The decision of the judges shall be final and no protest or appeal will be entertained except in cases where actual misrepresentation or fraud is alleged.

34. In any case where a protest is entered for an improper or malicious purpose, the Board of Directors may exclude the party making such protest from exhibiting for two years thereafter.

35. No prize colors or cards may be affixed until the awards have been made.

36. No person shall be permitted in the judging rings during the time of judging except the judges or assistants, persons in charge of the animals, Directors of the Association and members of the press.

37. Members of the press will be allowed into the judging rings only when wearing ring badges, and are particularly requested under no circumstances to interfere or converse with the judges while they are in the ring.

38. All prize ribbons or cards which have been awarded must be displayed during the Exhibition. Any infraction of this rule will incur the forfeiture of any premium.

39. Any person who shall attempt to interfere with or influence the judges while in the discharge of their duties, or who shall at any time, on the premises of the Association, use any contemptuous or abusive language to any judge or within his hearing in consequence of any award made by him, or any exhibitor refusing to accept any award made by a judge, shall forfeit his right to any premiums to which he might otherwise be entitled and may be excluded from exhibiting for one or more years thereafter. Judges are particularly requested to report any breach of this rule.

40. Upon the discovery of fraud, deception or dishonest practice, either in the preparation, ownership or of any representation concerning exhibits which may have affected, or have been intended to affect the decision of the judges, the Association has power to withhold the award and may prohibit any such party or parties from exhibiting in any class for one or more years, and may also publish the names of such persons if deemed expedient.

DISTINGUISHING COLORS OF PRIZE TICKETS

41. The several prize ribbons shall be distinguished by the following colors:

First Prize	Red.
Second Prize	Blue.
Third Prize	White.
Fourth Prize	Green.

Entries close July 8th, 1911

Fifth Prize	Yellow.
Sixth Prize	Pink.
Championship	Royal Purple.
Reserve Champion	Purple and White.

ADMISSION TO THE GROUNDS

42. The price of admission for adults will be 25 cents each time of entering and for children under 14 years of age 15 cents. Admission to grand stand 25c, **RESERVED SEATS EXTRA**. The admission will be by means of registering turnstiles, and **EACH PERSON MUST BE PROVIDED WITH THE PROPER TICKET BEFORE ENTERING AND PERSONALLY DEPOSIT TICKET IN TURNSTILE BOX.**

43. For each vehicle, delivery, hack, carriage or automobile a charge of 25 cents will be made each time of entering, which will take in one driver free. If driver shows a ticket will also admit vehicle or automobile. Tickets may be purchased good for entire fair for \$2.00 which will admit driver or vehicle. Drivers delivering goods on the grounds before 10 a.m. will be admitted free.

44. Necessary attendants upon stock and machinery will be furnished with special tickets upon application to the Manager. These passes, which are not transferable, will bear the names of the persons to whom they are issued, and if presented by any other person will be forfeited. Attendants' tickets will be issued as follows: Horses—One for every two, up to six; one for every three, over six. Cattle—One for every herd of six. Sheep and swine—One for each pen or flock. Poultry—One for each exhibitor making eight or more entries.

45. Exhibitors paying entrance fees of \$5 or over will be entitled to a free exhibitor's ticket.

46. Judges and members of the press will be furnished with tickets and badges, the badges being intended only as a means of showing their official connection with the exhibition, **AND NOT FOR THE PURPOSE OF SECURING ADMISSION TO THE GROUNDS.**

47. Parties bringing exhibits to the grounds will be admitted with same by the entry ticket accompanying exhibit. But **AFTERWARDS SUCH PARTIES MUST BE PROVIDED WITH REGULAR TICKETS AS ABOVE, OR THEY WILL HAVE TO PAY THE REGULAR ADMISSION FEE.**

FIRE AND POLICE PROTECTION

48. The most careful and thorough arrangements possible have been made to guard against fire. The grounds are provided with a fully equipped fire station and are also connected with the fire station by telephone, and with the precautions taken it is believed that any danger from fire is very remote; but exhibitors desiring insurance must give the matter their personal attention.

49. An ample police force will be on duty night and day during the continuance of the Exhibition, but exhibitors are expected to exercise constant supervision over their articles on exhibition, as the Association will not be responsible for loss or damage by theft, fire or otherwise. Small and valuable articles should be exhibited in show cases, securely locked.

Entries close July 8th, 1911

MISCELLANEOUS

50. Where space has been awarded to any exhibitor, the Association reserves the right, in case the exhibitor shall fail to make or maintain a creditable display, to declare the space allotted to him or any portion thereof forfeited. Exhibitors must arrange their exhibits in as attractive a manner as possible and fill the space allotted to them.

51. The Association reserves the right to prescribe the dimensions and regulate the positions of all signs and generally to direct the arrangement of all articles on exhibition, so far as the same may be necessary to secure harmony and an attractive appearance.

52. No person, except an exhibitor from the booth occupied by his exhibit, will be permitted to distribute any printed or advertising matter in buildings or upon the grounds or to affix same on any fence or building.

53. No claim for injury to any person or property shall ever be asserted, nor suit instituted or maintained against the Association, its officers or their agents, by or on behalf of any visitor or any person, firm or corporation, or their agents, representatives, servants or employees, having license or privilege to exhibit on the Fair grounds or occupying any space thereon.

54. If any damage, loss or injury to person or property shall be proximately caused by reason of any neglect or wilful act of any person, firm or corporation, their agents, representatives, servants or employees having license or privilege to exhibit on said Fair Grounds, or occupying any space thereon, the Association shall in no manner be responsible therefor, and in case it be subjected to any expense or liability, all persons causing the same or liable therefor shall indemnify the said Association.

55. In all cases the right is reserved to reject entirely, or accept conditionally, any entry or application; and under no circumstances will exhibits which are offensive by reason of their odor or appearance or which are dangerous by reason of their combustible or explosive character be admitted; and if any such be introduced by an exhibitor through misrepresentation or otherwise, they may be removed by order of the Board.

56. Exhibitors of animals, machinery in motion and other exhibits liable to occasional accidents, injury or damage to persons coming in contact with them, shall guard their exhibits and protect the public from coming in contact therewith, and every such exhibitor shall indemnify the Association from and against all claims and demands, costs and charges and expenses which it may incur, suffer or be put to by reason of any accident or of any person being injured or suffering damage through or by reason of any such exhibit not being properly guarded or the public not being properly protected therefrom.

PRIZE LIST

Horses

1. Judges are requested not to make awards where the entries are not worthy.

2. Horsemen are especially urged to send in their entries at as early a date as possible to facilitate the allotment of stalls.

3. All top doors of box stalls must be left open so that visitors can inspect the horses, between the hours of 9 a.m. and 6 p.m. All stalls must be cleared out before 7 a.m. so that refuse can be taken away before the arrival of visitors.

4. All animals competing for prizes must be entered in the names of their bona fide owners or their duly authorised agents, except where sire and get are shown together; should doubts arise, the Directors may require affidavits of ownership from the exhibitor. Both horses in a team must be owned by the exhibitor.

5. All winners of first and second prizes must compete, if eligible, for the Championship in their respective classes or they shall forfeit their class money. THIS RULE WILL BE STRICTLY ENFORCED.

6. Horses shown as a team may also compete as single horses.

7. Horses must be shown uncovered and in such manner as the judges may require or allow, and if exhibitors refuse to submit to the proper requirements of the judges their animals will be ruled out. In the roadster, carriage and hackney classes, except stallions, exhibitors must come prepared to show their horses in harness if required.

8. All horses competing must be brought out for the inspection of the judges, or for exhibition, whenever called out by the official appointed to attend to that duty.

9. Every exhibitor must make his own choice as to the class in which he will enter his horse, and abide by it; and great care must be taken to enter each horse in its proper class, as no alterations can be made after the entries close.

10. The official measurer appointed by the Exhibition Association will be in attendance from 9 to 11 a.m. on the first three days of the Exhibition.

11. Exhibitors who may desire to take their horses from the grounds at night will be allowed to do so on depositing \$5.00 for each animal with the Manager as a guarantee for the return of

Entries close July 8th, 1911

the animal next morning. If the horse is not returned by 9 o'clock next morning the amount deposited and all premiums awarded will be forfeited.

12. IN MAKING ENTRIES THE OWNERS OR THE AUTHORIZED AGENT'S NAME AND ADDRESS IN FULL, THE NAME OF THE ANIMAL, ITS AGE, COLOR, MARKINGS AND SEX MUST BE GIVEN. (THESE ARE IMPERATIVE.) NAMES OF SIRE AND DAM MUST BE GIVEN IF KNOWN. THE REGISTRATION NUMBER OF ANIMAL AND NAME OF STUD BOOK MUST BE GIVEN WITH ALL THE ENTRIES IN PURE BRED CLASSES.

13. For the purposes of the catalogue all entries must be as full as possible. Numbers corresponding with those in the catalogue will be furnished exhibitors on their arrival at the grounds and the number of the stall the horse is to occupy and no animal will be allowed to enter the ring without having its number on.

14. Amateurs residing in Regina and exhibiting in the Harness, Hunter and Saddle Classes are not required to keep their horses on the grounds during the entire time of the Exhibition, but must take part in the final parade in front of the Grand Stand or when specially ordered to parade by the committee.

15. IN THE BREEDING CLASSES NO ANIMAL WILL BE ALLOWED TO COMPETE IN MORE THAN ONE CLASS, EXCEPT WHEN COMPETING FOR PROGENY, IN TEAMS, SPECIAL OR CHAMPION PRIZES. THIS RESTRICTION DOES NOT APPLY TO OTHER CLASSES.

16. A copy of the certificate showing registration in the Canadian Live Stock Records, signed by the Secretary of the Association publishing the same, must be produced to the Director in charge, before the judging takes place.

17. The age of horses shall date from the first of January.

18. No horse suffering from any of the following diseases shall be awarded a premium: Cataract, periodic ophthalmia, roaring, thickwind or whistling, ringbone, sidebones, navicular disease, curb, bone spavin, thoroughpin or bog spavin. Animals injured by accident which does not lessen their usefulness may be awarded a prize.

19. Owners shall, if required, produce satisfactory proof to the judge of their stallion's virility in the four-year-old and over classes.

20. Noncompliance with the rules of the Association on the part of an exhibitor or employees shall incur the forfeiture of any premium awarded.

N.B.—Entry must be made in every section in which it is desired to compete, except in championship, although such entry may be free. Where no entry is made no premium can be awarded.

21. The Directors wish to suggest to all exhibitors of horses (other than in the Harness and Jumping Classes) that when showing their animals in the judging ring the attendants should be neatly attired in white or brown duck clothing.

Entries close July 8th, 1911

Class 1 CLYDESDALES

Certificate of registration in the Clydesdale Stud Book of Canada will be required.

Sec.	1st.	2nd.	3rd.	4th.	5th.
1. Stallion, five years or over.	\$50	\$40	\$30	\$20	\$15
2. Stallion, four years	50	40	30	20	15
3. Stallion, three years	50	40	30	20	15
4. Stallion, two years	40	30	20	15	10
5. Stallion, yearling	30	25	20	15	10
6. Brood mare with foal at foot or heavy with foal	40	30	25	15	10
7. Yeld mare, four years or over.....	40	30	20	10	
8. Filly, three years old.....	35	30	20	15	10
9. Filly, two years old.....	30	25	20	15	10
10. Filly, yearling	25	20	15	10	5
11. Foal of 1911.....	20	15	12	8	5
12. Three the progeny of one stallion, any age or sex, owned by exhibitor.....	30	20	15	10	
13. Mare and two of her progeny, owned by exhibitor	25	20	15	10	
14. Team in harness to wagon, mares or geldings, any age.....	50	40	30	20	10
15. Stallion, any age, Championship. Gold Medal, Reserve Ribbon					
16. Female, any age, Championship. Gold Medal, Reserve Ribbon					

SPECIAL BY THE CLYDESDALE HORSE SOCIETY OF GREAT BRITAIN AND IRELAND

Archibald MacNellage, Secretary, 93 Hope Street, Glasgow.

For the best Clydesdale stallion..... Gold Medal

For the best Clydesdale mare or filly, any age..... Gold Medal

No animal which has won one of the Society's medals in 1911 is eligible to compete for above.

Class 2 CANADIAN BRED CLYDESDALES

Certificate of registration in the Clydesdale Stud Book of Canada will be required.

Animals competing in this class are also eligible to compete in Class 1, but must pay entry fees in both classes if they wish to show in both.

The Grand Trunk Pacific Railway contributes one hundred dollars towards the prizes in sections 1 and 2.

Sec.	1st.	2nd.	3rd.	4th.	5th.
1. Stallion, three years or over.....	\$40	\$30	\$20	\$15	\$10
2. Stallion, two years.....	30	25	20	15	10
3. Stallion, yearling	25	20	15	10	
4. Brood mare with foal at foot or heavy with foal	40	30	25	15	
5. Yeld mare, four years or over.....	30	25	15	10	
6. Filly, three years.....	25	20	15	10	
7. Filly, two years.....	25	20	15	10	
8. Filly, yearling	20	15	10	5	

Entries close July 8th, 1911

Sec.	1st.	2nd.	3rd.	4th.	5th.
9. Three, the get of one stallion, not necessarily the property of one exhibitor. Entry to be made in the name of the owner of the stallion, which need not have been bred in Canada	\$25	\$20	\$15	\$10	
10. Mare and two of her progeny, the progeny to have been bred but not necessarily owned by exhibitor.	25	20	15	10	
11. Stallion, any age, championship..	Gold Medal, Reserve Ribbon				
12. Female, any age, championship..	Gold medal, Reserve Ribbon				
13. SPECIAL by the "Canadian Farm," for the best Canadian bred female.....	Silver Tea Set (value \$40)				

The Clydesdale Horse Association of Canada, J. W. Sangster, Secretary Treasurer, Toronto Ont., gives a grant of four hundred dollars (\$400) towards the prizes in classes 1 and 2.

Class 3

SHIRES

Certificate of registration in the Canadian Shire Horse Stud Book must be produced in this class.

Sec.	1st.	2nd.	3rd.
1. Stallion, three years or over.....	\$40	\$30	\$20
2. Stallion, two years.....	25	15	
3. Stallion, yearling	20	10	
4. Brood mare with foal at foot or heavy with foal	30	20	10
5. Yeld mare	20	15	
6. Three-year filly.	20	15	
7. Two year filly.....	15	10	
8. Yearling filly	10	5	
9. Foal of 1911.....	10	5	
10. Three, the get of one sire.....	25		
11. Best stallion, any age.....	Gold Medal, Reserve Ribbon		
12. Best female, any age.....	Gold Medal, Reserve Ribbon		

SPECIAL BY THE CANADIAN SHIRE HORSE ASSOCIATION

G. de W. Green, Secretary Treasurer, 58 Grenville Street, Toronto, Ont.

13. Best Shire Stallion.....	\$25
14. Best Shire mare or filly.....	25
15. Best Shire stallion, any age, bred in Canada....	25
16. Best Shire mare or filly, any age, bred in Canada	25

All horses entered for these prizes must be entered in the Canadian Shire Horse Stud Book under the name of the exhibitor, and no prize will be awarded to anyone not complying with this condition.

SPECIAL BY THE SHIRE HORSE SOCIETY.

Secretary, J. Sloughgrove, 12 Hanover Square, London, W., England.

For the best Shire stallion or colt.....	Silver Medal
For the best Shire mare or filly.....	Silver Medal

Entries close July 8th, 1911

Additional Special Prizes

1. The Canadian Aberdeen-Angus Association will give a Special Prize of \$100 to be divided amongst the Prize Winners, in the class for Aberdeen-Angus Cattle.

2. In Class 19, Section 4, for pair of Carriage Horses, the First Prize of \$25 is given by the Von's Hotel, Regina, Sask.

3. Canadian Belgian Draft Horse Breeders' Association, Secretary J. A. Paquette, Department of Agriculture, Quebec, Que., \$20 in class for Belgian Horses.

4. Societe Hippique Percheronne de France, President Monsieur le Chevallier Avellne, Nogent-le-Rotrou, France, for the best collection of Mares, registered in the Percheron Stud Book of France, the Society's Major Gold Medal.

CLASS 4 PERCHERONS

Certificate of registration in Canadian Percheron Stud Book must be produced in this class.

Sec.	1st.	2nd.	3rd.	4th.
1. Stallion, four years or over.....	\$50	\$40	\$30	\$20
2. Stallion, three years.....	35	30	20	10
3. Stallion, two years.....	25	15	10	
4. Stallion, yearling.....	20	10	5	
5. Brood mare with foal at foot or heavy with foal.....	35	30	20	10
6. Yeld mare.....	25	20	10	
7. Three year old filly.....	25	20	10	
8. Two year old filly.....	20	15	10	
9. Yearling filly.....	15	10	8	
10. Foal of 1911.....	15	10	8	
11. Three, the get of one sire, owned by exhibitor.....	30	20	10	
12. Mare and two of her progeny, owned by exhibitor.....	20	10		
13. Team in harness to wagon, mares or geldings, any age.....	40	30	20	

SPECIAL PRIZES OFFERED BY THE CANADIAN PERCHERON HORSE BREEDERS' ASSOCIATION

Secretary F. R. Pike, High River, Alberta.

14. Best stallion, any age.....	Silver Cup, Reserve Ribbon
15. Best female, any age.....	Silver Cup, Reserve Ribbon
16. Best Canadian bred stallion....	Silver Cup, Reserve Ribbon
17. Best Canadian bred female, any age.....	Gold Medal, Reserve Ribbon
18. Best Canadian bred yearling filly	Gold Medal, Reserve Ribbon

Class 5 BELGIANS

Certificate of registration in the Canadian Belgian Draft Stud Book must be produced in this class.

Sec.	1st.	2nd.	3rd.
1. Stallion, three years or over.....	\$40	\$30	\$20
2. Stallion, two years.....	25	15	
3. Stallion, yearling.....	20	10	
4. Brood mare with foal at foot or heavy with foal.....	30	20	10
5. Yeld mare.....	20	15	
6. Three year old filly.....	20	15	
7. Two year old filly.....	15	10	
8. Yearling filly.....	10	5	
9. Foal of 1911.....	10	5	
10. Three, the get of one sire, owned by exhibitor..	25		
11. Best stallion, any age.....	Gold Medal, Reserve Ribbon		
12. Best female, any age.....	Gold Medal, Reserve Ribbon		

Entries close July 8th, 1911

SPECIAL PRIZES OFFERED BY MESSRS. EUGENE POOTMAN & SONS

Corner of Cameron Street and Ninth Avenue, Regina, Sask.

13. Team in harness, to wagon, mares or geldings,
any age Silver Cup

Messrs. Eugene Pootman & Sons also offer medals for the following classes:

14. Best four females, any age owned by exhibitor.
15. Best filly or gelding, sired by registered Belgian stallion.
16. Best Canadian bred Belgian, male or female (registered).
17. Best stallion with three of his get.
18. Mare and two of her progeny.

Class 6 SUFFOLK PUNCH

Certificate of registration in the Canadian Suffolk Horse Stud Book must be produced in this class.

Sec.	1st.	2nd.	3rd.
1. Stallion, three years or over.....	\$40	\$30	\$20
2. Stallion, two years.....	25	15	
3. Stallion, yearling.....	20	10	
4. Brood mare, with foal at foot or heavy with foal	35	20	10
5. Yeld mare.....	20	15	
6. Three year old filly.....	20	15	
7. Two year old filly.....	15	10	
8. Yearling filly.....	10	5	
9. Foal of 1911.....	10	5	
10. Three, get of one sire.....	25		

SPECIAL BY THE SUFFOLK HORSE SOCIETY

Secretary Fred Smith, Woodbridge, Suffolk, England.

- Best stallion, any age..... Medal
Best mare, any age..... Medal

Reserve Ribbon will be given by the Association in each of the above championship classes.

Class 7 SPECIAL HEAVY DRAFT CLASS

Horses in Sections 1, 2, 3 and 4 of this class must be recorded in the Canadian National Live Stock Records.

Sec.	1st.	2nd.	3rd.
1. Ten heavy horses, any age, sex or breed, owned in one province at time of entry. Post entry. Exhibition Diploma and Gold Medal to each exhibitor in the winning ten.			
2. Five heavy horses, any age, sex or breed, owned by one exhibitor.....	\$40	\$25	\$15
3. Three heavy horses, any age, sex or breed, bred and owned by the exhibitor:			
1st Prize—Special by the "Nor'West Farmer"—Silver Cup (value \$50).			
2nd Prize—Donated by the Association.....			\$25
3rd Prize—Donated by the Association.....			15

Entries close July 8th, 1911

PRIZE LIST

19

4.—SPECIAL by the Farmers' Advocate for the best draft team, mares or geldings, any breed, each 1,700 pounds or over, to be shown in harness to wagon:

1st Prize \$25 and Gold Medal
2nd Prize Silver Medal

SPECIAL BY THE INTERNATIONAL HARVESTER COMPANY OF AMERICA

Regina Branch, W. P. Wells, General Agent.

5. Four-horse team, mares or geldings, to be shown tandem to wagon.

First Prize—Oliver No. 1 high lift sulky plough (value \$64).

Second Prize—Donated by the Association, \$40.

Third Prize—\$30.

Fourth Prize—\$20.

6. Six-horse team, mares or geldings, to be shown tandem to wagon..... \$75 \$50

SPECIAL BY THE M. RUMELY COMPANY, LAPORTE, IND., U.S.A.

Regina Branch, B. G. Baker, Manager.

7. Heavy draft team, mares or geldings, any age or breed, registered or unregistered, to be shown in harness to wagon.

Prize—A twelve barrel steel water tank mounted on set of four inch steel trucks and equipped with tank pump (value \$200).

Class 8 SPECIAL CLASS

1. Four teams, mares or geldings, to be shown to wagons; teams must have been owned by bona fide farmers within a local improvement district or rural municipality for at least three months prior to August 1, 1911. Registered stock barred. Teams to be entered under the name of the local improvement district or rural municipality.

SPECIAL PRESENTED BY THE LEADER PUBLISHING COMPANY.

First Prize—\$80 and Silver Cup presented by The Leader Publishing Company.

Second Prize—\$40.

Third Prize—\$20.

Class 9 DRAFT HORSES

Registered horses or horses eligible for registration, not eligible to compete in this class.

Sec.	1st.	2nd.	3rd.	4th.
1 Brood mare, 1,600 pounds or over, with foal at foot or heavy with foal.....	\$25	\$15	\$10	\$5
2. Yeld mare or gelding, 4 years or over, 1,600 pounds or over.....	20	15	10	
3. Team mares or geldings, each 1,600 pounds or over, to be shown in harness to wagon	30	25	15	
4. Filly or gelding, three years.....	20	15	10	

Entries close July 8th, 1911

Class 10 AGRICULTURAL HORSES

Registered horses or horses eligible for registration not eligible to compete in this class.

Sec.	1st.	2nd.	3rd.	4th.
1. Brood mare, under 1,600 pounds, with foal at foot or heavy with foal.....	\$25	\$15	\$10	\$5
2. Yeld mare or gelding, under 1,600 pounds, four years or over.....	20	15	10	
3. Filly or gelding, three years.....	20	15	10	
4. Filly or gelding, two years.....	18	14	10	6
5. Filly or gelding, yearling.....	15	12	8	6
6. Foal of 1911.....	12	8	6	4
7. Team of mares or geldings, each under 1,600 pounds, suitable for farm purposes, to be shown in harness to wagon.....	30	20	15	

Class 11 GENERAL PURPOSE

A general purpose horse is understood to be a horse suitable for plough, wagon, carriage, buggy or saddle, weight 1,150 to 1,400 pounds, and not less than 15 hands 2 inches in height. Docked horses not eligible.

Sec.	1st.	2nd.	3rd.
1. Team, mares or geldings, in harness to wagon..	\$30	\$25	\$15

Light Horses

Class 12 THOROUGHBREDS

Certificate of registration in the Canadian National Live Stock Records will be required.

Horses in training not allowed to compete.

Sec.	1st.	2nd.	3rd.
1. Stallion, four years or over.....	\$35	\$20	\$10
2. Stallion, three years.....	25	15	
3. Stallion, two years.....	15	10	
4. Stallion, yearling.....	15	10	
5. Brood mare, with foal at foot or heavy with foal	25	20	
6. Yeld mare.....	20	15	
7. Filly, three years old.....	20	15	
8. Filly, two years old.....	15	10	
9. Filly, yearling.....	15	10	
10. Foal of 1911.....	12	8	

SPECIAL BY THE CANADIAN THOROUGHBRED HORSE SOCIETY

John J. Dixon, Secretary Treasurer, Toronto, Ont.

For the best Thoroughbred stallion, 3 years or over, suitable for getting saddle horses and hunters..... \$25
Size, conformation and bone will be the chief requisites in judging this class.

Entries close July 8th, 1911

SPECIAL BY THE HUNTERS' IMPROVEMENT SOCIETY

12 Hanover Square, London, W., England.

For the best Thoroughbred or Registered Hunter Stallion....

Silver Medal

Class 13**HACKNEYS**

Certificate of registration in the Canadian Hackney Stud Book will be required in this class.

Sec.	1st.	2nd.	3rd.
1. Stallion, four years or over.....	\$35	\$20	\$10.
2. Stallion, three years.....	25	15	
3. Stallion, two years.....	15	10	
4. Stallion, yearling.....	15	10	
5. Brood mare, with foal at foot or heavy with foal	25	20	
6. Yield mare.....	20	15	
7. Filly, three years old.....	20	15	
8. Filly, two years old.....	15	10	
9. Filly, yearling.....	15	10	
10. Foal of 1911.....	12	8	

SPECIAL BY THE CANADIAN HACKNEY HORSE SOCIETY.

H. M. Robinson, Doncaster, Ont., Secretary Treasurer

Stallion, any age or height, on line.....	Silver Medal and	\$25
Mare, any age or height, on line.....	Silver Medal and	25
Stallion in harness.....		25
Brood mare with foal at foot or in foal.....		25

SPECIAL BY THE HACKNEY HORSE SOCIETY

12 Hanover Square, London, W., England.

For the best Hackney Stallion registered in the Eng-

lish, Canadian or American Stud Books..... Silver Medal

SPECIAL BY THE AMERICAN HACKNEY HORSE SOCIETY

Secretary, Gurney C. Gae, 308 West Ninety-seventh Street, New York.

Best Hackney Stallion, registered in the American Hackney Stud Book, not under 14 hands 2 in., to be first shown in harness, then stripped and shown in hand. Conformation and quality to count 50 per cent., action, speed and style in harness 50 per cent.....

Silver Medal

Same conditions as above for class for Hackney mares

Silver Medal

Class 14**STANDARD BREDS**

Certificate of registration in the book of record of the Canadian Standard Bred Horse Society will be required in this class.

Entries close July 8th, 1911

Three year olds and upwards to be shown in harness except in class for brood mares. Horses in training not allowed to compete.

Sec.	1st.	2nd.	3rd.
1 Stallion, three years or over.....	\$35	\$20	\$10
2. Stallion, two years.....	15	10	5
3. Stallion, yearling	15	10	5
4. Brood mare with foal at foot or heavy with foal	25	20	15
5. Yeld mare	20	15	10
6. Filly, three years old.....	20	15	10
7. Filly, two years old.....	15	10	5
8. Filly, yearling	15	10	5
9. Foal of 1911.....	12	8	5

Class 15 ROADSTERS

Registered horses not eligible to compete in this class.
Horses in training not eligible to compete.

Sec.	1st.	2nd.	3rd.
1. Filly or gelding, three years.....	\$15	\$10	\$5
2. Filly or gelding, two years.....	12	8	5
3. Filly or gelding, yearling.....	12	8	5
4. Brood mare with foal at foot or heavy with foal.....	20	15	10
5. Foal of 1911.....	10	5	5

Class 16 ENGLISH, FRENCH OR GERMAN COACH HORSES

Certificate of registration in the Canadian National Live Stock Records will be required.

Sec.	1st.	2nd.	3rd.
1. Stallion, three years or over.....	\$35	\$20	\$10
2. Stallion, two years or under.....	20	10	5
3. Brood mare with foal at foot or heavy with foal	25	20	15
4. Female, three years or over.....	20	15	10
5. Filly, two years or under.....	15	10	5

Class 17 PONIES

Certificate of registration in the Canadian Pony Stud Book will be required in this class.

Sec.	1st.	2nd.	3rd.
1. Shetland stallion, any age.....	\$15	\$10	\$5
2. Shetland mare with foal at foot or heavy with foal	15	10	5
3. Shetland female, any age.....	15	10	5
4. Hackney pony stallion, any age.....	15	10	5
5. Hackney pony mare, with foal at foot or heavy with foal	15	10	5
6. Hackney pony, female, any age.....	15	10	5
7. Welsh or any other breed, stallion any age.....	15	10	5
8. Welsh or any other breed, brood mare with foal at foot or heavy with foal.....	15	10	5
9. Welsh or any other breed, female, any age.....	15	10	5

Entries close July 8th, 1911

PRIZE LIST

23

SPECIAL BY THE SHETLAND PONY STUD BOOK SOCIETY

Aberdeen, Scotland.

For the best Shetland pony male, any age—Medal bearing the special die of the Society.

For the best Shetland pony female, any age—Medal bearing the special die of the Society.

SPECIAL BY THE CANADIAN PONY SOCIETY.

Secretary Treasurer, W. J. Stark, Toronto, Ont.

Best Hackney pony stallion.....	Silver Medal
Best Hackney pony mare.....	Silver Medal
Best Shetland stallion.....	Silver Medal
Best Shetland mare.....	Silver Medal

Harness Horses

Note—Should one of a pair be within the height limit by not more than half an inch and the other be within the height limit, the pair shall be allowed to compete in one of the classes, but neither horse shall be allowed to compete in both classes.

Class 18 ROADSTERS (Trotters and Pacers)

To be shown to appropriate four-wheeled road wagon.

Conformation, substance, style of going, manners, action, biting and shoeing and as they are and appear at time of showing will be considered in judging.

Sec.	1st.	2nd.	3rd.
1. Single trotter, mare or gelding, 15 hands 2 inches and over	\$20	\$10	\$5
2. Single trotter, mare or gelding, 15 hands to 15 hands 2 inches.....	20	10	5
3. Pair of matched trotters, mares or geldings, 15 hands 2 inches and over.....	25	15	10
4. Pair of matched trotters, mares or geldings, 15 hands to 15 hands 2 inches.....	25	15	10
5. Single pacer, mare or gelding.....	20	10	5
6. Pair matched pacers, mares or geldings.....	25	15	10

Class 19 CARRIAGE HORSES

To be shown to appropriate carriages.

Sec.	1st.	2nd.	3rd.
1. Single horse, mare or gelding, over 15 hands 2 inches	\$20	\$15	\$5
2. Single horse, mare or gelding, 15 hands to 15 hands 2 inches.....	20	10	5
3. Pair of horses, mares or geldings, over 15 hands 2 inches	25	15	10
4. Pair of horses, mares or geldings, 15 hands to 15 hands 2 inches.....	25	15	10

Entries close July 8th, 1911

Class 20**HIGH STEPPERS**

Sec.	1st.	2nd.	3rd.
1. Single horse, mare or gelding, 15 hands 2 inches and over	\$20	\$10	\$5
2. Single horse, mare or gelding, under 15 hands 2 inches	20	10	5
3. Pair of matched horses, mares or geldings.....	25	15	10
4. Stallion in harness	25	15	10

Class 21 SPECIAL HARNESS CLASSES

Sec.	1st.	2nd.	3rd.
1. Tandem, mares or geldings, over 15 hands, both owned by one exhibitor, to be shown to appropriate two-wheeled vehicle.....	\$20	\$10	\$5
2. Horse and runabout, mare or gelding, to be shown to a runabout and driven by owner. Horse to count 75 per cent., appointments 25 per cent. Horse must stand without being held.....	15	10	5
3. Single cob in harness, mare or gelding, 14 hands 1 inch to 15 hands.....	15	10	5
4. Pair of cobs in harness, mares or geldings, 14 hands 1 inch to 15 hands.....	20	10	5
5. Tandem cobs, mares or geldings, 14 hands 1 inch to 15 hands, both owned by exhibitor, to be shown to appropriate two-wheeled vehicle....	20	10	5
6. Four-in-hand, to be shown to appropriate vehicle	30	20	10
7. Single horse, mare or gelding, to be driven by a lady. Horse to count 60 per cent. Appointments 40 per cent. Horse must have good manners, stand quietly and back well.....	15	10	5
8. Pair of horses, mares or geldings, to be driven by a lady. Horse to count 60 per cent, appointments 40 per cent. Horses must have good manners, stand quietly and back well.....	20	15	10

Class 22**SPECIAL BY THE IMPERIAL BANK OF CANADA**

Regina Branch, J. A. Wetmore, Manager.

For the best horse in single harness, mare or gelding, must have taken first or second prize at this Exhibition in Classes 18, 19, 20 or 21.....

Silver Cup

Class 23 FARMERS' DRIVING HORSES

Sec.	1st.	2nd.	3rd.
1. Single driver, mare or gelding, to be shown to appropriate vehicle. Horse to count 60 per cent, appointments 40 per cent. The entire outfit to have been the bona fide property of the exhibitor for at least three months prior to August 1, 1911.....	\$20	\$10	\$5

Entries close July 8th, 1911

PRIZE LIST

25

Sec.	1st.	2nd.	3rd.
2. Pair of drivers, mares or geldings, to be shown to appropriate vehicle. Horses to count 60 per cent., appointments 40 per cent. Same conditions as in previous class.....	\$25	\$15	\$10

Note—A farmer is one who resides on his farm and whose sole occupation is farming.

SPECIAL BY THE OFFICE SPECIALTY MANUFACTURING CO.
Regina Office, George E. Meyers, Manager.

To the winner in Section 2 of above class—Set of Sectional Book Cases (value \$20).

Class 24 SADDLE HORSES

Sec.	1st.	2nd.	3rd.
1. Saddle horse, mare or gelding, 15 hands 2 inches and over	\$20	\$15	\$10
2. Saddle horse, mare or gelding, under 15 hands 2 inches	20	15	10
3. Lady's saddle horse, mare or gelding, ridden by a lady	20	15	10
4. Stock horse, mare or gelding.....	15	10	5
5. Combination horse, mare or gelding, 15 hands and over, to be first shown in an appropriate vehicle. The horse then to be unharnessed in the ring and shown under saddle.....	20	15	10
6. Combination horse, mare or gelding, under 15 hands, same conditions as previous class.....	20	15	10

SPECIAL BY THE KING'S HOTEL CO.

7. Champion saddle horse, mare or gelding—Silver Cup (value \$25)

Class 25 HUNTERS

In Sections 1, 2 and 3 conformation to count 60 per cent., manners and performance over jumps, 40 per cent. Horses to carry a minimum of 150 pounds.

Sec.	1st.	2nd.	3rd.
1. Lightweight hunter, mare or gelding, up to 160 pounds	\$20	\$15	\$10
2. Heavyweight hunter, mare or gelding, up to 200 pounds	20	15	10
3. Lady's hunter, mare or gelding, to be ridden by a lady	20	15	10
4. Hunter showing best performance over jumps..	20	15	10

Class 26 PONIES

Sec.	1st.	2nd.
1. Pony in harness, under 12 hands, mare or gelding, to be driven by boy or girl under fifteen years of age	\$10	\$5
2. Pony in harness, mare or gelding, 12 hands and under 13 hands 1 inch.....	10	5

Entries close July 8th, 1911

Sec.	1st.	2nd.
3. Pony in harness, mare or gelding, 13 hands 1 inch and under 14 hands 1 inch.	\$10	\$5
4. Pair of ponies in harness, mares or geldings, under 12 hands, to be driven by girl or boy under fifteen years of age.	15	10
5. Pair of ponies in harness, mares or geldings, 12 hands and under 13 hands 1 inch.	15	10
6. Pair of ponies in harness, mares or geldings, 13 hands 1 inch and under 14 hands 1 inch.	15	10
7. Saddle pony, mare or gelding, under 12 hands.	10	5
8. Saddle pony, mare or gelding, 12 hands and under 13 hands 1 inch.	10	5
9. Saddle pony, mare or gelding, 13 hands 1 inch and under 14 hands 1 inch.	10	5
10. Tandem, mares or geldings, both the property of the exhibitor, under 14 hands 1 inch.	15	10
11. Four-in-hand, mares or geldings, under 14 hands 1 inch.	15	10

Class 27 DELIVERY AND DRAY

Sec.	1st.	2nd.	3rd.
1. Single horse, mare or gelding, to be shown in single harness with delivery wagon as used in local deliveries. Horse to count 60 per cent., wagon and equipment, 40 per cent.	\$15	\$10	\$5
2. Single horse, mare or gelding, to be shown to dray or lorry.	15	10	5
3. Pair of delivery horses, mares or geldings. (Same conditions as Sec. 1.)	20	15	10
4. Pair of horses, mares or geldings, to be shown to dray or lorry.	20	15	10

Class 28 SPECIAL

For the most appropriately decorated stalls by any exhibitor in the Horse Classes, decorative display to be maintained throughout the exhibition:

First Prize	\$20
Second Prize	10

st. 2nd.

10 \$5

15 10

15 10

15 10

10 5

10 5

10 5

15 10

15 10

d. 3rd.

10 \$5

10 5

15 10

15 10

Exhibitor
rough-

\$20

10

Cattle

1. Judges are requested not to make awards in sections where the entries are not worthy.

2. In making entries, the owner's name and address in full, the exact age of the animal, its name, registration number, names of sire and dam and name of breeder must be given on the Entry Sheet for the purposes of listing.

3. All cattle competing for prizes must be registered in their respective Canadian Herd Book and be the property of the exhibitor at the time of making entry. If required, exhibitors must produce pedigrees at the time of exhibition.

4. Accommodation will not be provided for cattle not properly entered and accompanied by catalogue number. Special accommodation will be provided for nurse cows, but exhibitors must state on entry blank how many nurse cows they wish to bring.

5. The age of cattle shall date from July 1st.

6. Cows must be giving milk at the time of exhibition or be EVIDENTLY well gone in calf.

7. No animal may compete in more than one class or section, except for the herd prizes in the class to which it belongs; for bull and get, cow and progeny, herd, or collection, championships and any special prizes offered. No exhibitor will be permitted to enter more than one herd or collection in any one section except in sections for the get of one bull or cow and two of her progeny.

8. All animals must be shown in the judging ring; they must be properly haltered, and exhibitors must be ready to bring them out when called for.

9. Bulls over one year must have rings in their noses.

10. A Catalogue will be published and numbers corresponding with those in the Catalogue will be furnished exhibitors on their arrival at the grounds. No animal will be allowed in the rings without having its number on.

11. The prize tickets or ribbons awarded must be placed on the animal before leaving the judging ring.

12. Noncompliance with the rules of the Association on the part of an exhibitor or his employee shall incur the forfeiture of any premium awarded. Entry must be made in every section in which it is desired to compete, except championships, although such entry may be free. Where no entry is made no premiums can be awarded.

13. The Directors wish to suggest to all exhibitors that when showing their animals in the judging ring the attendants should be neatly attired in white or brown duck clothing.

Entries close July 8th, 1911

Class 29

SHORTHORNS

Certificate of registration in the Dominion Shorthorn Herd Book will be required.

Sec.	1st.	2nd.	3rd.	4th.	5th.	6th.
1. Bull, three years or over.....	\$50	\$40	\$30	\$25	\$15	\$10
2. Bull, two years.....	45	35	25	15	10	
3. Bull, senior yearling, calved between June 30, 1909, and Jan. 1, 1910	35	25	20	15	10	
4. Bull, junior yearling, calved between Jan. 1 and June 30, 1910	35	25	20	15	10	
5. Senior bull calf, calved between June 30, 1910, and Jan. 1, 1911	25	20	15	10	5	
6. Junior bull calf, calved on or after Jan. 1, 1911.....	20	15	12	8	5	
7. Senior champion bull, two years or over	Gold Medal, Reserve Ribbon					
8. Junior champion bull, under two years	Gold Medal, Reserve Ribbon					
9. Grand champion bull.....	Gold Medal, Reserve Ribbon					
10. Cow, four years or over.....	50	40	30	25	15	10
11. Cow, three years.....	50	40	30	25	15	10
12. Cow with suckling calf at foot, to be judged on beef qualities, cow 60 per cent., calf 40 per cent....	45	35	25	20	15	
13. Cow in milk (to be judged 50 per cent. for beef qualities, 50 per cent. for milk qualities).....	45	35	25	20	15	
14. Heifer, two years.....	45	35	25	20	15	10
15. Heifer, senior yearling, calved between June 30, 1909, and Jan. 1, 1910	35	25	20	15	10	
16. Heifer, junior yearling, calved between Jan. 1 and June 30, 1910	35	25	20	15	10	
17. Senior helper calf, calved between June 30, 1910, and Jan. 1, 1911	25	20	15	10	5	
18. Junior helper calf, calved on or after Jan. 1, 1911.....	20	15	12	8	5	
19. Senior champion female, two years or over	Gold Medal, Reserve Ribbon					
20. Junior champion female, under two years	Gold Medal, Reserve Ribbon					
21. Grand champion female.....	Gold Medal, Reserve Ribbon					
22. Graded herd, bull two years or over, cow three years or over, helper two years and under three, helper yearling and under two, helper, under one year.....	50	40	30	20	10	
23. Herd, bull and four females, all two years or over, owned by exhibitor	50	40	30	20	10	
24. Herd, bull and four females, all under two years, owned by exhibitor	50	40	30	20	10	

Entries close July 8th, 1911

PRIZE LIST

29

Sec.	1st.	2nd.	3rd.	4th.	5th.	6th.
25. Herd, bull and four females, all bred and owned by exhibitor...	\$50	\$40	\$30	\$20	\$10	
26. Four calves, bred and owned by exhibitor	35	25	20	15	10	
27. Three, the get of one bull, owned by exhibitor	30	25	20	15	10	
28. Cow and two of her progeny, the progeny to be owned and bred exhibitor	30	25	20	15		
SPECIAL by the "Canadian Farm"						
for the best Canadian bred						
Shorthorn female						
Silver Tea Set (value \$40)						

Class 30

HEREFORDS

Certificate of registration in the Canadian Hereford Herd Book will be required.

Sec.	1st.	2nd.	3rd.	4th.
1. Bull, three years or over.....	\$30	\$20	\$15	
2. Bull, two years or over.....	25	20	15	
3. Bull, one year or over.....	25	20	15	
4. Bull calf, senior, calved between June 30, 1910, and January 1, 1911.....	25	20	15	
5. Bull calf, junior, calved after Jan. 1, 1911..	20	15	10	
6. Bull, any age, championship.....	Gold Medal			
7. Cow, three years or over.....	30	20	15	
8. Heifer, two years.....	25	20	15	
9. Heifer, yearling	25	20	15	
10. Senior heifer calf, calved between June 30, 1910, and Jan. 1, 1911.....	20	15	10	
11. Junior heifer calf, calved after January 1, 1911	15	10	5	
12. Female, any age, championship.....	Gold Medal			
13. Herd, bull and four females, the property of exhibitor	45	30	20	5
14. Herd, bull and four females, all under two years, the property of exhibitor.....	35	25	15	5
15. Three calves, owned by exhibitor.....	20	15	10	
16. Three animals, owned by exhibitor, the get of one bull.....	35	25	15	

SPECIAL—The Canadian Hereford Association donates \$50 and the American Hereford Association \$200 of the above prize list.

Class 31

ABERDEEN ANGUS

Certificate of registration in the Canadian Aberdeen Angus Association will be required.

Sec.	1st.	2nd.	3rd.
1. Bull, three years or over.....	\$30	\$25	\$20
2. Bull, two years.....	25	20	15
3. Bull, senior yearling, calved between June 30 1909, and Jan. 1, 1910.....	20	15	10

Entries close July 8th, 1911

Sec.	1st.	2nd.	3rd.
4. Bull, junior yearling, calved between Jan. 1 and June 30, 1910.....	\$20	\$15	\$10
5. Senior bull calf, calved between June 30, 1910, and Jan. 1, 1911.....	15	10	5
6. Junior bull calf, calved on or after January 1, 1911	15	10	5
7. Best bull, any age.....	Gold Medal,	Reserve	Ribbon
8. Cow, three years or over.....	25	20	15
Heifer, two years.....	20	15	10
10. Heifer, senior yearling, calved between June 30, 1909, and Jan. 1, 1910.....	20	15	10
11. Heifer, junior yearling, calved between Jan. 1, and June 30, 1910.....	15	10	5
12. Senior heifer calf, calved between June 30, 1910, and Jan. 1, 1911.....	15	10	5
13. Junior heifer calf, calved on or after January 1, 1911	12	8	5
14. Best female, any age.....	Gold Medal,	Reserve	Ribbon
15. Herd, bull and four females, all two years or over, the property of exhibitor.....	30	20	10
16. Herd, bull and four females, all under two years, the property of exhibitor.....	25	15	10
17. Three calves, owned and bred by exhibitor.....	20	10	5
18. Three animals, the get of one sire, owned by exhibitor	20	10	5

SPECIAL BY THE ABERDEEN ANGUS CATTLE SOCIETY

Secretary, James R. Barclay, 9 Old Market Place, Banff, Scotland.

For the best Aberdeen Angus animal in the breeding classes—The Society's Major Silver Medal.

Class 32

GALLOWAYS

Certificate of registration in the North American Galloway Herd Book will be required in this class.

Sec.	1st.	2nd.
1. Bull, three years or over.....	\$25	\$20
2. Bull, two years.....	20	15
3. Bull, yearling	15	10
4. Bull calf	10	5
5. Best bull, any age, championship	Gold Medal,	Reserve Ribbon
6. Cow, three years or over.....	20	15
7. Heifer, two years.....	15	10
8. Heifer, yearling	15	10
9. Heifer calf	10	5
10. Female, any age, championship	Gold Medal,	Reserve Ribbon
11. Herd, bull and four females, all two years or over, the property of one exhibitor.....	25	20
12. Herd, bull and four females, all under two years, the property of exhibitor.....	20	15
13. Three calves, bred and owned by exhibitor.....	15	10

Entries close July 8th, 1911

Class 33 SPECIAL CLASS OPEN TO BEEF BREEDS

Cattle in this class must be registered in the Canadian National Live Stock Records.

Sec.	1st.	2nd.	3rd.	4th.
1. Ten head of beef cattle, any age, sex or breed, owned in any one province at time of entry Post entry.—Exhibition Diploma and Gold Medal to each exhibitor in the winning ten.				
2. Five head of beef cattle, any age, sex or breed, owned by exhibitor.....	\$35	\$25	\$20	\$15

SPECIAL BY THE MANITOBA FREE PRESS.

3. Four head of beef cattle, any age, sex or breed, bred and owned by exhibitor.				
1st—Silver Challenge Cup (value \$75) accompanied by a Silver Medal, to become the property of the winner of the cup.				
2nd—By the Association.....				\$25
3rd—By the Association.....				20
4th—By the Association.....				15

Class 34 HERDSMAN'S PRIZE

Special by P. M. Bredt & Sons, Golden West Stock Farm, Edenwold, Sask.

Herdsmen's Prize for the best fitted and conditioned animal of any beef breed..... Gold Medal
Competitors must be the fitters and must have had charge of the animal entered for at least three months prior to the date of the show. Animals may be of any age or sex.

Awards based on the following conditions: Fitting and condition of the animal, 60 per cent.; deportment, dress and manner of competitor and skill in showing the animal in the ring, 40 per cent.

Class 35 HOLSTEINS

The Holstein Friesian Association of Canada, Secretary Treasurer, G. W. Clemons, St. George, Ont., donates one hundred dollars (\$100) towards the prizes in this class.

Sec.	1st.	2nd.	3rd.	4th.	5th.
1. Bull, three years or over.....	\$40	\$35	\$25	\$15	
2. Bull, two years.....	35	25	15	10	
3. Bull, senior yearling, calved between June 30 and Dec. 31, 1909.....	20	15	10	5	
4. Bull, junior yearling, calved on or after January 1, 1910.....	20	15	10	5	
5. Senior bull calf, calved between June 30 and Dec. 31, 1910.....	15	12	8	5	
6. Junior bull calf, calved on or after January 1, 1911.....	12	8	6	4	

Entries close July 8th, 1911

Sec.		1st.	2nd.	3rd.	4th.	5th.
7.	Bull, senior champion.....	Gold Medal,	Reserve	Ribbon		
8.	Bull, junior champion.....	Gold Medal,	Reserve	Ribbon		
9.	Bull, grand champion.....	Gold Medal,	Reserve	Ribbon		
10.	Cow, three years or over.....	\$35	\$30	\$25	\$20	\$10
11.	Heifer, two years.....	25	20	15	10	
12.	Heifer, senior yearling, calved between June 30 and Dec. 31, 1909.....	20	15	10	5	
13.	Heifer, junior yearling, calved on or after January 1, 1910.....	20	15	10	5	
14.	Senior heifer calf, calved between June 30 and Dec. 31, 1910.....	15	12	8	5	
15.	Junior heifer calf, calved on or after January 1, 1911.....	12	8	6	4	
16.	Female, senior champion.....	Gold Medal,	Reserve	Ribbon		
17.	Female, junior champion.....	Gold Medal,	Reserve	Ribbon		
18.	Female, grand champion.....	Gold Medal,	Reserve	Ribbon		
19.	Herd, bull and four females, all two years or over, property of exhibitor	40	30	20	10	
20.	Herd, bull and four females, all under two years old, property of exhibitor	30	25	20	10	
21.	Three calves, owned and bred by ex- hibitor.....	20	10	5		
22.	Three, the get of one sire, bred and owned by one exhibitor.....	20	10	5		
23.	Cow and two of her progeny, the pro- geny owned and bred by exhibitor..	20	10	5		

Class 36**AYRSHIRES**

Certificate of registration in the Canadian Herd Book will be required in this class.

The Canadian Ayrshire Breeders' Association, Secretary Treasurer, W. F. Stephen, Huntingdon, Quebec, donates one hundred dollars (\$100) towards the prizes in this class.

Sec.		1st.	2nd.	3rd.	4th.	5th.
1.	Bull, three years or over.....	\$40	\$35	\$25	\$15	
2.	Bull, two years.....	30	25	15	10	
3.	Bull, senior yearling, calved between June 30 and Dec. 31, 1909.....	20	15	10	5	
4.	Bull, junior yearling, calved on or after Jan. 1, 1910.....	20	15	10	5	
5.	Senior bull calf, calved between June 30 and Dec. 31, 1910.....	15	12	8	5	
6.	Junior bull calf, calved on or after January 1, 1911.....	12	8	6	4	
7.	Bull, senior champion.....	Gold Medal,	Reserve	Ribbon		
8.	Bull, junior champion.....	Gold Medal,	Reserve	Ribbon		
9.	Bull, grand champion.....	Gold Medal,	Reserve	Ribbon		
10.	Cow, three years or over.....	35	30	25	20	\$10
11.	Heifer, two years.....	25	20	15	10	
12.	Heifer, senior yearling, calved between June 30 and Dec. 31, 1909.....	20	15	10	5	

Entries close July 8th, 1911

PRIZE LIST

33

Sec.	1st.	2nd.	3rd.	4th.	5th.
13. Heifer, junior yearling, calved on or after Jan. 1, 1910.....	\$20	\$15	\$10	\$5	
14. Senior heifer calf, calved between June 30 and Dec. 31, 1910.....	15	12	8	5	
15. Junior heifer calf, calved on or after January 1, 1911.....	12	8	6	4	
16. Female, senior champion.....	Gold Medal, Reserve Ribbon				
17. Female, junior champion.....	Gold Medal, Reserve Ribbon				
18. Female, grand champion.....	Gold Medal, Reserve Ribbon				
19. Herd, bull and four females, all two years or over, owned by exhibitor..	40	30	20	10	
20. Herd, bull and four females, all under two years old, the property of exhibitor	30	25	20	10	
21. Three calves, owned and bred by exhibitor	20	10	5		
22. Three, the get of one sire, owned by exhibitor	20	10	5		
23. Cow and two of her progeny, the progeny owned and bred by exhibitor..	20	10	5		

SPECIAL BY THE AYRSHIRE CATTLE HERD BOOK SOCIETY OF GREAT BRITAIN AND IRELAND.

For the best male.....	Silver Medal
For the best female.....	Silver Medal

Class 37 JERSEYS AND GUERNSEYS

Certificate of registration in the Canadian Jersey Cattle Club Record or Canadian Guernsey Herd Book will be required in this class.

Sec.	1st.	2nd.	3rd.	4th.
1. Bull, three years or over.....	\$25	\$20	\$15	
2. Bull, two years.....	25	15	10	
3. Bull, yearling	20	15	10	
4. Bull calf	15	12	8	\$5
5. Best bull, any age, championship	Gold Medal, Reserve Ribbon			
6. Cow, three years or over.....	25	20	15	10
7. Heifer, two years.....	20	15	10	
8. Heifer, yearling	20	15	10	
9. Heifer calf	15	12	8	5
10. Female, any age, championship—	Gold Medal, Reserve Ribbon			
11. Herd, bull and four females, all two years or over, owned by exhibitor.....	25	15		
12. Herd, " and four females, all under two years the property of exhibitor.....	20	10		
13. Three ves, under one year old, owned and bred by "bitor.....	15	10		
14. Three animals, the get of one sire, bred and owned by exhibitor.....	15	10		

Entries close July 8th, 1911

Class 38 RED POLLED CATTLE

Certificate of registration in the Canadian Red Polled Herd Book will be required.

Sec.	1st.	2nd.
1. Bull, three years or over.....	\$25	\$20
2. Bull, two years.....	20	15
3. Bull, yearling	15	10
4. Bull calf	12	8
5. Bull, any age, championship....	Gold Medal, Reserve Ribbon	
6. Cow, three years or over.....	20	15
7. Heifer, two years.....	15	10
8. Heifer, yearling	12	8
9. Heifer calf	10	5
10. Female, any age, championship..	Gold Medal, Reserve Ribbon	

SPECIAL PRIZE BY THE RED POLLED CATTLE SOCIETY OF GREAT BRITAIN AND IRELAND.

11. Best Red Polled animal, any age or sex. Gold Medal

SPECIAL BY THE CANADIAN RED POLLED ASSOCIATION.

Secretary, Dr. A. W. Bell, Winnipeg, Man.

12. Herd, bull and four females..... \$25

Class 39 SPECIAL CLASS, OPEN TO DAIRY CATTLE

The prizes in this class, up to the amount of two hundred and fifty dollars (\$250) are donated by the Canadian Northern Railway.

Cattle in this class must be registered in some Herd Book recognized by the Canadian National Live Stock Records.

Sec.	1st.	2nd.	3rd.	4th.
1. Ten head of pure bred dairy cattle, any age or sex, owned in any one province at time of entry. Post entry. Exhibition Diploma and Gold Medal to each exhibitor in the winning ten.				
2. Five head of pure bred dairy cattle, any age, sex or breed, bred and owned by one exhibitor	\$35	\$25	\$20	\$15
3. Four head of dairy cattle, any age, sex or breed, bred and owned by exhibitor....	35	25	20	15

Class 40 GRADE CATTLE

Sec.	1st.	2nd.	3rd.	4th.
1. Cow, three years or over, beef strain.....	\$15	\$12	\$8	\$5
2. Cow, three years or over, milk strain.....	15	12	8	5
3. Heifer, two years old, beef strain.....	12	8	5	
4. Steer, two or three years old.....	12	8	5	
5. Heifer, two years, milk strain.....	12	8	5	
6. Steer, yearling	10	6	4	
7. Heifer, yearling, beef strain.....	10	6	4	
8. Heifer, yearling, milk strain.....	10	6	4	
9. Heifer calf	6	4		

Entries close July 8th, 1911

PRIZE LIST

35

Sec.	1st.	2nd.	3rd.
10. Herd, three females, two years or over, beef strain owned by exhibitor.....	\$15	\$10	\$5
11. Herd, three females, two years or over, milk strain, owned by exhibitor.....	15	10	5
12. Yoke of oxen, hitched to waggon.....	20	15	10

Class 40a SPECIAL CLASS

To the exhibitor in the cattle classes who decorates his stalls in the most suitable manner, decoration to be maintained throughout the Exhibition \$15 \$10

Class 41 JUDGING COMPETITION

Three entries necessary for competition.
For date and hour apply to Manager.

Sec. 1 BEEF CATTLE

The best judging of beef cattle, restricted to farmers and farmers' sons under 30. Judging to be done by score card or otherwise, together with such written explanation as may be required by the Official Judges, who will take into consideration the correct placing of animals, the reasons and quickness in making awards. Entrance fee 50c. Prizes, \$10, \$6, \$4.

Sec. 2 DAIRY CATTLE

The best judging of dairy cattle. (Same conditions as for beef cattle.) Entrance fee, 50c. Prizes, \$10, \$6, \$4.

Sec. 3 HEAVY DRAUGHT HORSES

The best judging of heavy horses. (Same conditions as Sections 1 and 2.) Entrance fee, 50c. Prizes, \$10, \$6, \$4.

Entries close July 8th, 1911

Sheep

1. Judges are requested not to make awards in sections where entries are not worthy.

2. In making entries the age of the animal must be given. If required, exhibitors must make a statutory declaration that the animals are of the ages stated by them.

3. Ewes, two shears and over, must have produced lambs the present season.

4. All sheep in pure bred classes must be registered in the Canadian National Live Stock Records, except lambs under six months, in which class application forms duly filled out and signed will be accepted.

5. A lamb must be dropped after January 1, 1911.

6. No entry charged on pens, when the same sheep are entered in other sections.

7. Noncompliance with the rules of the Association on the part of an exhibitor or his employee shall incur the forfeiture of any premium awarded.

In classes for sheep, the Silver Medals awarded for the best ram and best ewe, in every class, are donated by the Ontario Sheep Breeders' Association.

Secretary, W. P. Westervelt, Department of Agriculture, Toronto, Ont.

Class 42

SOUTHDOWNS

Certificate of registration in the Canadian National Live Stock Records will be required.

Sec.	1st.	2nd.	3rd.
1. Ram, two shears or over.....	\$15	\$12	\$8
2. Ram, shearling	15	12	8
3. Ram, lamb	12	8	5
4. Best ram, any age.....	Silver Medal, Reserve Ribbon		
5. Ewe, aged	15	12	8
6. Ewe, shearling	15	12	8
7. Ewe lamb	12	8	5
8. Best ewe, any age.....	Silver Medal, Reserve Ribbon		
9. Pen, ram, two ewes and two lambs.....	15	10	
10. Pen, ram lamb, and two ewe lambs, owned and bred by exhibitor	12	8	

Class 43

SHROPSHIRE

Certificate of registration in the Canadian National Live Stock Records will be required.

Sec.	1st.	2nd.	3rd.
1. Ram, two shears or over.....	\$15	\$12	\$8
2. Ram, shearling	15	12	8
3. Ram lamb	12	8	5
4. Best ram, any age	Silver Medal, Reserve Ribbon		
5. Ewe, aged	15	12	8

Entries close July 8th, 1911

PRIZE LIST

37

Sec.	1st.	2nd.	3rd.
6. Ewe, shearling	15	12	8
7. Ewe lamb	12	8	5
8. Best ewe, any age.....	Silver Medal, Reserve Ribbon		
9. Pen, ram, two ewes, and two lambs.....	15	10	
10. Pen, ram lamb, and two ewe lambs, bred and owned by exhibitor.....	12	8	

Class 44 OXFORD DOWNS

Certificate of registration in the Canadian National Live Stock Records will be required.

Sec.	1st.	2nd.	3rd.
1. Ram, two shears or over.....	\$15	\$12	\$8
2. Ram, shearling	15	12	8
3. Ram lamb	12	8	5
4. Best ram, any age.....	Silver Medal, Reserve Ribbon		
5. Ewe, aged	15	12	8
6. Ewe, shearling	15	12	8
7. Ewe lamb	12	8	5
8. Best ewe, any age.....	Silver Medal		
9. Pen, ram, two ewes and two lambs.....	15	10	
10. Pen, ram lamb, and two ewe lambs, bred and owned by exhibitor.....	12	8	

SPECIAL BY THE AMERICAN OXFORD DOWN RECORD ASSOCIATION

W. A. Shafor, Secretary, Hamilton, Ohio.

Sec.	1st.	2nd.
Best yearling ram.....	\$10	\$5
Best yearling ewe.....	10	5
Best pen of four lambs of either sex.....	10	5

NOTE.—All stock competing for these prizes must be good specimens of the breed or no prizes will be awarded; must be bred and owned by the exhibitor, who must be a member of this Association and a resident of the State or Province where competing; must be registered in the American Oxford Down Record, bear the A. O. D. R. A. ear tag and certificate of registry under the seal of the Association presented at the time of the exhibition.

Class 45 HAMPSHIRE

Certificate of registration in the Canadian National Live Stock Records will be required.

Sec.	1st.	2nd.
1. Ram, two shears or over.....	\$15	\$12
2. Ram, shearling	15	12
3. Ram lamb	12	8
4. Ram, any age, championship..	Silver Medal, Reserve Ribbon	
5. Ewe, aged	15	12
6. Ewe, shearling	15	12
7. Ewe lamb	12	8
8. Ewe, any age, championship..	Silver Medal, Reserve Ribbon	
9. Pen, ram, two ewes, and two lambs.....	15	
10. Pen, ram lamb, and two ewe lambs, owned and bred by exhibitor	12	

Entries close July 8th, 1911

Class 46**SUFFOLK DOWNS**

Certificate of registration in the Canadian National Live Stock Records will be required.

Sec.	1st.	2nd.
1. Ram, two shears or over.....	\$15	\$12
2. Ram, shearling	15	12
3. Ram lamb	12	8
4. Ram, any age, championship... Silver Medal, Reserve Ribbon		
5. Ewe, aged	15	12
6. Ewe, shearling	15	12
7. Ewe lamb	12	8
8. Ewe, any age, championship... Silver Medal Reserve Ribbon		
9. Pen, ram, two ewes, and two lambs.....	15	
10. Pen, ram lamb and two ewe lambs, owned and bred by exhibitor		12

Class 47**DORSET HORNS**

Certificate of registration in the Canadian National Live Stock Records will be required.

Sec.	1st.	2nd.
1. Ram, two shears or over.....	\$15	\$12
2. Ram, shearling	15	12
3. Ram lamb	12	8
4. Best ram, any age..... Silver Medal		
5. Ewe, aged	15	12
6. Ewe, shearling	15	12
7. Ewe lamb	12	8
8. Best ewe, any age..... Silver Medal		
9. Pen, ram, two ewes, and two lambs.....	15	
10. Pen, ram lamb and two ewe lambs, owned and bred by exhibitor		12

Class 48**LEICESTERS**

Certificate of registration in the Canadian National Live Stock Records will be required.

Sec.	1st.	2nd.	3rd.
1. Ram, two shears or over.....	\$15	\$12	\$8
2. Ram, shearling	15	12	8
3. Ram lamb	12	8	5
4. Best ram, any age..... Silver Medal, Reserve Ribbon			
5. Ewe, aged	15	12	8
6. Ewe, shearling	15	12	8
7. Ewe lamb	12	8	5
8. Best ewe, any age..... Silver Medal, Reserve Ribbon			
9. Pen, ram, two ewes, and two lambs.....	15	10	
10. Pen, ram lamb, and two ewe lambs, bred and owned by exhibitor.....	12	8	

Entries close July 8th, 1911

Class 49

COTSWOLDS

Certificate of registration in the Canadian National Live Stock Records will be required.

Sec.	1st.	2nd.	3rd.
1. Ram, two shears or over.....	\$15	\$12	\$8
2. Ram, shearling	15	12	8
3. Ram, lamb	12	8	5
4. Best ram, any age.....	Silver Medal, Reserve Ribbon		
5. Ewe, aged	15	12	8
6. Ewe, shearling	15	12	8
7. Ewe lamb	12	8	5
8. Best ewe, any age.....	Silver Medal, Reserve Ribbon		
9. Pen, ram, two ewes and two lambs.....	15	10	
10. Pen, ram lamb, and two ewe lambs, bred and owned by exhibitor.....	12	8	

Class 50

LINCOLNS

Certificate of registration in the Canadian National Live Stock Records will be required.

Sec.	1st.	2nd.	3rd.
1. Ram, two shears or over.....	\$15	\$12	\$8
2. Ram, shearling	15	12	8
3. Ram lamb	12	8	5
4. Best ram, any age.....	Silver Medal, Reserve Ribbon		
5. Ewe, aged	15	12	8
6. Ewe, shearling	15	12	8
7. Ewe lamb	12	8	5
8. Best ewe, any age.....	Silver Medal, Reserve Ribbon		
9. Pen, ram, two ewes, and two lambs.....	15	10	
10. Pen, ram lamb, and two ewe lambs, bred and owned by exhibitor.....	12	8	

Class 51

GRADES

Sec.	1st.	2nd.	3rd.
1. Ewes, aged, a pair.....	\$12	\$8	\$5
2. Ewes, shearlings, a pair.....	10	6	4
3. Ewes, lambs, a pair.....	8	6	4
4. Pen, two ewes and two ewe lambs. Animals competing in sections 1-3 of this class not eligible to compete in this section.....	12	8	5

Swine

1. Judges are requested not to make awards in sections where entries are not worthy.
2. Entries in the pure bred classes must be registered in the Canadian National Live Stock Records.
3. The age of animals shall date from July 1.
4. If required, exhibitors must make a statutory declaration that their animals are of the age stated by them.
5. Boars with tusks shall not be eligible to compete, nor shall they be admitted to the grounds. The Directors in charge are instructed to have this rule strictly enforced.
6. Breeding sows must have had pigs during the calendar year or be in pig when shown.
7. No entry fee will be charged on sow and litter of pigs when the sow is exhibited in another section.
8. Non-compliance with the rules of the Association, on the part of an exhibitor or his employee, shall incur the forfeiture of any premium awarded.
9. Entry must be made in every section in which it is desired to compete, although such entry may be free. Where no entry is made no premium can be awarded.

Class 52 IMPROVED YORKSHIRES

Certificate of registration in the Canadian National Live Stock Records will be required.

Sec.	1st.	2nd.	3rd.	4th.
1. Boar, two years or over.....	\$20	\$15	\$10	\$5
2. Boar, over one and under two years.....	20	15	8	5
3. Boar, over six and under twelve months....	15	10	6	4
4. Boar, under six months.....	15	10	6	4
5. Best boar, any age.....	Silver Medal			
6. Sow, two years or over.....	20	15	10	5
7. Sow, over one and under two years.....	20	15	10	5
8. Sow, over six and under twelve months....	15	10	6	4
9. Sow, under six months.....	15	10	6	4
10. Best sow, any age.....	Silver Medal			
11. Boar and three sows, any age.....	20	15	10	5
12. Four pigs, under six months old, the get of one boar, bred and owned by exhibitor...	15	10	5	
13. Four pigs, under six months old, the produce of one sow, bred and owned by exhibitor	15	10	5	

SPECIAL BY THE ONTARIO LARGE YORKSHIRE SWINE BREEDERS' SOCIETY.

Secretary, W. P. Westervelt, Department of Agriculture, Toronto, Ont.

For the best Yorkshire boar, any age.....	\$15
For the best Yorkshire sow, any age.....	15

Entries close July 8th, 1911

PRIZE LIST

41

Class 53

BERKSHIRES

Sec.	1st.	2nd.	3rd.
1. Boar, two years or over.....	\$20	\$15	\$10
2. Boar, over one and under two years.....	15	12	8
3. Boar, over six and under twelve months.....	12	8	5
4. Boar, under six months.....	12	8	5
5. Best boar, any age.....	Silver medal		
6. Sow, two years or over.....	20	15	10
7. Sow, over one and under two years.....	15	12	8
8. Sow, over six and under twelve months.....	12	8	5
9. Sow, under six months.....	12	8	5
10. Best sow, any age.....	Silver Medal		
11. Boar and three sows, any age.....	15	10	
12. Four pigs, under six months old, the get of one boar, bred and owned by exhibitor.....	15	10	
13. Four pigs under six months old, the produce of one sow, bred and owned by exhibitor.....	15	10	

SPECIAL BY THE ONTARIO BERKSHIRE BREEDERS' SOCIETY.

Secretary, W. P. Westervelt, Department of Agriculture, Toronto, Ont.

Berkshire boar, over 12 and under 18 months.....	\$10	\$5
Berkshire sow, over 12 and under 18 months.....	10	5

Class 54

TAMWORTHS

Sec.	1st.	2nd.
1. Boar, two years or over.....	\$15	\$10
2. Boar, over one and under two years.....	15	10
3. Boar, over six and under twelve months.....	12	8
4. Boar, under six months.....	10	5
5. Best boar, any age.....	Silver Medal	
6. Sow, two years or over.....	15	10
7. Sow, over one and under two years.....	15	10
8. Sow, over six and under twelve months.....	12	8
9. Sow, under six months.....	10	5
10. Best sow, any age.....	Silver Medal	
11. Boar, any age; and three sows, any age.....	15	10
12. Four pigs under six months old, the get of one boar, bred and owned by exhibitor.....	15	10
13. Four pigs, under six months old, the produce of one sow, bred and owned by exhibitor.....	15	10

Class 55

POLAND CHINAS

Sec.	1st.	2nd.
1. Boar, two years or over.....	\$15	\$10
2. Boar, over one and under two years.....	15	10
3. Boar, over six and under twelve months.....	12	8
4. Boar, under six months.....	10	5
5. Best boar, any age.....	Silver Medal	
6. Sow, two years or over.....	15	10
7. Sow, over one and under two years.....	15	10

Entries close July 8th, 1911

Sec.	1st.	2nd.
8. Sow, over six and under twelve months.....	\$12	\$8
9. Sow, under six months.....	10	5
10. Best sow, any age.....	Silver Medal	
11. Boar, any age; and three sows, any age.....	15	10
12. Four pigs under six months old, the get of one boar, bred and owned by exhibitor.....	15	10
13. Four pigs, under six months old, the produce of one sow, bred and owned by exhibitor.....	15	10

Class 56**BACON HOGS**

No registration required. Entries in this class must not compete in any other class.

The hogs to be bred by exhibitor.

Hogs to weigh not less than 160 lbs., and not more than 220 lbs. each, and to be judged in relation to length and even depth of side, width of back, smoothness of shoulder and head, and well developed hams.

Sec.	1st.	2nd.	3rd.	4th.	5th.
1. Pen of three finished hogs, suitable for the bacon trade	\$25	\$20	\$15	\$10	\$5

Entries close July 8th, 1911

Class 57

Poultry

SPECIAL NOTICE

All specimens must be banded.

All entries must be made by class and entry number corresponding to catalogue, on blanks, provided by the Secretary.

All entry fees must be forwarded with the entry.

All entries must reach the Secretary on or before July 8, 1911.

Positively no entries will be received after that date.

Exhibits must be addressed to L. T. McDonald, Secretary Manager.

Transportation on all exhibits must be fully prepaid.

RULES AND REGULATIONS

1. The Revised American Standard of Perfection shall be the guide of the Judges on all varieties mentioned therein.

All specimens will be judged by comparison.

2. All exhibits must be shown as classified.

3. A breeding pen shall consist of one male and three females, but must be distinct specimens from those shown in single classes.

4. All specimens will be properly cared for by the committee, and returned at the close of the Exhibition. The expense of transportation must be prepaid and all specimens entered at the risk of owners. Coops must have owner's name and address printed thereon for the return journey, and also the name of the express company by which they are to be returned. The Association will not be responsible for loss from any cause whatever, but will exercise all reasonable vigilance in the care of specimens.

5. All specimens must be exhibited in their natural condition, with the exception of Games, Game Bantams, Pheasants and wild fowl. Any violation of this rule will exclude the specimens from competing, and cause the withholding of all premiums awarded to such birds. Any exhibitor interfering with the plumage or otherwise handling any bird or birds, either his or any exhibitor's during the days of judging, shall forfeit the whole amount of his prize money. In the event of an owner considering it necessary that his bird or birds should be handled, then he shall report to the Committee.

6. In competing for displays or sweepstakes, premiums will count as follows, unless otherwise specified: 1st prize 5 points, 2nd prize 4 points, 3rd prize 3 points, 4th prize 2 points.

7. The Judge shall award all prizes. His decision shall be final, except in the case of fraud, or error, in which event the matter in dispute shall be decided by the executive.

8. All specimens competing for premiums must be strictly the property of the exhibitor. Exhibitors shall, if deemed necessary by the Committee, make statutory declaration that the specimens exhibited by them are in accordance with this rule. In case any exhibitor refuses to make such declaration, on being requested, all premiums awarded him shall be withheld.

Entries close July 8th, 1911

9. Any person making a protest shall deposit \$2.00, and in the event of the protest being sustained, such deposit shall be returned, but if the protestant fails to prove the affirmation, then the deposit shall be forfeited.

All protests must be in writing and deposited with the Secretary by 10 o'clock Thursday, August 10th.

10. While the judging of poultry is being carried on the public will be prohibited from having any communication with the Judge. Any assistants to the Judge must not be exhibitors in the class being judged.

11. All exhibits must be delivered at the Poultry Building on Monday, August 7th.

12. The exhibition will be open to the public on Wednesday, August 9, at 9 a.m., and will be open daily from 9 a.m., closing Friday at 9 p.m.

NOTICE—Strict attention to the above rules will save unnecessary trouble, as they will be closely adhered to by the association.

PRIZE LIST

Entry fee, single bird, 25c. Breeding pen 50c.

Premiums will be awarded for the best cock (Sec. 1), hen (Sec. 2), cockerel (Sec. 3), pullet (Sec. 4), breeding pen (Sec. 5).

Prizes in each section to be as follows: For single birds, where the entries number four or under, 1st \$1.00; 2nd 50c, 3rd 25c.

Where entries number over four, 1st \$1.50; 2nd, \$1.00; 3rd 50c.

Where entries number over eight, 1st \$2.00; 2nd \$1.50; 3rd \$1.00; 4th 50c.

For breeding pens, 1st \$3.00, 2nd \$2.00, 3rd \$1.00.

The Regina Poultry Breeders' Association will give a special prize of a silver cup to be won outright for the best display in any one variety of poultry, bantams and pigeons barred.

ASIATIC

Class.

1. Brahmas, light.
2. Brahmas, dark.
3. Cochin, buff.
4. Cochin, partridge.

Class.

5. Cochin, black.
6. Cochin, white.
7. Langshans, black.
8. Langshans, any other variety.

AMERICAN

Class.

9. Plymouth Rocks, barred.
10. Plymouth Rocks, white.
11. Plymouth Rocks, buff.
12. Wyandottes, golden laced.
13. Wyandottes, silver laced.
14. Wyandottes, black.
15. Wyandottes, buff.
16. Wyandottes, white.

Class.

17. Wyandottes, partridge.
18. Wyandottes, Columbian.
19. Dominiques.
20. Javas, black.
21. Javas, mottled.
22. S.C. Rhode Island Reds.
23. R.C. Rhode Island Reds.

Entries close July 8th, 1911

GAME

Class.

- 24. Games, black red.
- 25. Games, brown red.
- 26. Games, duckwing.
- 27. Games, pyle.

Class.

- 28. Games, Indian.
- 29. Games, Sumatra (black).
- 30. Games, birchen.
- 31. Games, pitt.

MEDITERRANEAN

Class.

- 32. Leghorns, R.C. white.
- 33. Leghorns, S.C. white.
- 34. Leghorns, R.C. brown.
- 35. Leghorns, S.C. brown.
- 36. Leghorns, black.
- 37. Leghorns, buff, S.C.
- 38. Leghorns, buff, R.C.

Class.

- 39. Spanish.
- 40. Minorcas, S.C. black.
- 41. Minorcas, R.C. black.
- 42. Minorcas, white.
- 43. Andalusians.
- 44. Anconas.

FRENCH

Class.

- 45. Houdans.
- 46. Creve Coeurs.

Class.

- 47. La Fleche.

ENGLISH

Class.

- 48. Dorkings, silver grey.
- 49. Dorkings, colored.
- 50. Dorkings, white.
- 51. Orpingtons, buff S.C.

Class.

- 52. Orpingtons, black S.C.
- 53. Orpingtons, white S.C.
- 53a. Orpingtons, any other variety.

POLANDS

Class.

- 54. Polands, W.C.B.
- 55. Polands, golden.
- 56. Polands, silver.
- 57. Polands, white.

Class.

- 58. Polands, golden bearded.
- 59. Polands, silver bearded.
- 60. Polands, white bearded.
- 61. Polands, buff laced.

HAMBURGS

Class.

- 62. Hamburgs, G.S.
- 63. Hamburgs, S.S.
- 64. Hamburgs, G.P.

Class.

- 65. Hamburgs, S.P.
- 66. Hamburgs, black.
- 67. Red Caps.

MIXED

Class.

- 68. Sultans.
- 69. Silkies.

Class.

- 70. Faveroles.
- 71. Any other variety fowls.

GAME BANTAMS

Class

- 72. Bantams, black red.
- 73. Bantams, brown red.
- 74. Bantams, duckwing.
- 75. Bantams, pyle.

Class

- 76. Bantams, white.
- 77. Bantams, birchen.
- 78. Bantams, any other variety.

ORNAMENTAL BANTAMS

Class.	Class.
79. Bantams, G. seabright.	87. Bantams, white booted.
80. Bantams, S. seabright.	88. Bantams, Japanese white.
81. Bantams, black rose comb.	89. Bantams, Japanese, black tailed.
82. Bantams, white rose comb.	90. Bantams, Japanese black.
83. Bantams, cochin white.	91. Bantams, Polish bearded.
84. Bantams, cochin black.	92. Bantams, Polish unbearded.
85. Bantams, cochin buff.	93. Bantams, any other variety.
86. Bantams, cochin partridge.	

ORNAMENTAL BIRDS

Prizes. 1st \$1.00; 2nd 50c.

Class.	Class.
94. Golden Pheasants.	99. Ring Neck Pheasants.
95. Silver Pheasants.	100. Guinea Fowl, any variety.
96. English Pheasants.	101. Pea Fowl, any variety.
97. Lady Amherst Pheasants.	102. Any other variety.
98. Reeve Pheasants.	

TURKEYS

Prizes will be awarded for Cock, adult (Sec. 1); Cock, yearling (Sec. 2); Cockeral (Sec. 3); Hen (Sec. 4); Pullet (Sec. 5).

Entry Fee 50c. each. Prizes: 1st \$2.00; 2nd \$1.00.

Class.	Class.
103. Bronze.	106. Buffs.
104. White.	107. Any other variety.
105. Bourbon reds.	

GESE

Prizes will be awarded for Gander, old (Sec. 1); Goose, old (Sec. 2); Gander, young (Sec. 3); Goose, young (Sec. 4).

Entry Fee 50c. each. Prizes: 1st \$2.00; 2nd \$1.00.

Class.	Class.
108. Emden.	111. African.
109. Toulouse.	112. Any other variety.
110. Chinese.	

DUCKS

Prizes will be awarded for Drake, old (Sec. 1); Duck, old (Sec. 2); Drake, young (Sec. 3); Duck, young (Sec. 4).

Entry Fee 25c. Prizes: 1st \$1.50; 2nd \$1.00; 3rd 50c.

Class.	Class.
113. Aylesbury.	117. Rouen.
114. Cayuga.	118. Indian Runner.
115. Muscovy.	119. Any other variety.
116. Pekin.	

Entries close July 8th, 1911

PIGEONS

Prizes will be awarded in Classes 120 to 156 for pair of birds.

Entry Fee 10c. Prizes: 1st 50c; 2nd 25c.

Class.	Class.
120. Pigeon, common.	136. Tumblers, muffed, any other color.
121. Pouters, blue or black pied.	137. Jacobins, white.
122. Pouters, red or yellow pied.	138. Jacobins, red or yellow.
123. Pouters, white.	139. Jacobins, any other color.
124. Antwerps, any color.	140. Owls, African.
125. Barbs, any color.	141. Owls, English.
126. Flying homers, blue or black.	142. Trumpeters.
127. Flying homers, chequered.	143. Turbets, blue.
128. Flying homers, any other color.	143a. Turbets, any other variety.
129. Show homers, any color.	144. Fantails, white.
130. Tumblers, long face, clean leg, red or yellow.	145. Fantails, blue or black.
131. Tumblers, long face, clean leg, any other solid color.	146. Fantails, any other color.
132. Tumblers, long face, clean leg, any other color.	147. Magpies, black.
133. Tumblers, short face.	148. Magpies, red.
134. Tumblers, muffed, red or yellow.	149. Magpies, any other color.
135. Tumblers, muffed, any other solid color.	150. Archangels.
	151. Nuns.
	152. Swallows, blue or black.
	153. Swallows, red or yellow.
	154. Dragoons.
	155. Oriental Frills.
	156. Any other variety.

RABBITS

Entry Fee 10c.

Prizes: 1st 50c; 2nd 25c.

Prizes will be awarded for (1) old buck, (2) young buck, (3) old doe, (4) young doe.

Class.	Class.
157. Rabbits, common.	160. Any other variety.
158. Rabbits, lopped ears.	161. Belgian Hares.
159. Rabbits, white pink eyed.	

CAGE BIRDS

Prizes will be offered for Sec. 1 male; Sec. 2 female.

Entry Fee 15c for each entry. Prizes: 1st \$1.00; 2nd 50c.

Class.	Class.
162. Canary, Belgian, any color.	169. Goldfinch.
163. Canary, Scotch, fancy.	170. Bullfinch.
164. Canary, crested Norwiche.	171. Linnet.
165. Canary, Yorkshires.	172. Thrush.
166. Canary, Lizard, gold or silk.	173. Parrot, any variety.
167. Canary, Cinnamon.	174. Paroquette.
168. Canary, any cross.	175. Magpie.
	176. Mocking Bird.

Entries close July 8th, 1911

DRESSED POULTRY

Entry Fee 15c.

Prizes: 1st \$1.00; 2nd 50c.

1. Before prize money is paid a statutory declaration may be required from each exhibitor in the Dressed Poultry Department, stating that each exhibit has been fed and is owned by the exhibitor, and that all rules have been complied with.

2. Poultry must be exhibited undrawn, with feet on and feathers shall not be plucked from the head nor from the upper portion of the neck.

3. All birds must have been thoroughly fasted, and no bird will be allowed to compete if feed is in the crop.

4. All birds must have been killed by pulling or wringing the neck or by bleeding through the roof of the mouth.

5. Prizes for dressed poultry will be awarded on best and best dressed.

Class.

177. Best dressed turkey.

178. Best dressed goose.

179. Best dressed pair of chickens.

180. Best dressed pair of ducks.

EGGS

(Double Yolk Barred)

Entry Fee 15c.

Prizes: 1st \$1.50; 2nd \$1.00; 3rd 50c; 4th 25c.

Class.

181. For the 12 best hen eggs, white.

182. For the 12 best hen eggs, brown.

183. For the 12 heaviest hen eggs, any color.

Eggs must be exhibited only by owners of birds laying same and a statutory declaration provided if necessary. The name of the variety that produced the eggs must accompany each entry.

184. Display of Poultry Appliances, Association's Diploma.

Entries close July 8th, 1911

Class 58

Dogs

Entries close Saturday, July 15, 1911.

The show will be held August 8, 9, 10, 11, 1911.

Pedigree not required to show your dog. Dogs not registered in the Canadian Kennel Club will be listed with said club free of charge to exhibitor.

An entry fee of one dollar (\$1.00) will be charged for first entry on each dog, 50 cents additional for each class when a dog is entered in more than one class.

In cases of dogs coming by express, each dog must be clearly identified by a tag attached to the collar.

No dog will be received before 4 p.m., Monday, August 7th, or after 9 a.m., Tuesday, August 8th.

For entry forms and prize lists containing special rules write to the Secretary Manager.

A first prize of \$5, a second of \$3 and a third prize of Ribbon is offered in each of the following sections:

ST. BERNARDS

Open, dogs and bitches. Winners, dogs and bitches.

RUSSIAN WOLFDOUNDS

Open, dogs and bitches. Winners, dogs and bitches.

DEERHOUNDS

Open, dogs and bitches. Winners, dogs and bitches.

GREYHOUNDS

Open, dogs and bitches. Winners, dogs and bitches.

ENGLISH SETTERS

Puppy, dogs and bitches. Open, bitches.
Open, dogs. Winners, bitches.
Winners, dogs.

IRISH SETTERS

Puppy, dogs and bitches. Open, bitches.
Open, dogs. Winners, bitches.
Winners, dogs.

GORDON SETTERS

Open, dogs. Open, bitches.
Winners, dogs. Winners, bitches.

POINTERS

Puppy, dogs and bitches. Open, bitches.
Open, dogs. Winners, bitches.
Winners, dogs.

RETRIEVERS

Puppy, dogs and bitches. Open, bitches.
Open, dogs. Winners, bitches.
Winners, dogs.

Entries close July 15th, 1911.

CHESAPEAKE BAY DOGS

Open, dogs and bitches. Winners, dogs and bitches.

IRISH WATER SPANIELS

Open, dogs and bitches. Winners, dogs and bitches.

COCKER SPANIELS, ANY COLOR

Puppy, dogs and bitches. Winners, dogs and bitches.
Open, dogs and bitches.

COLLIES

Puppy, dogs and bitches. Winners, dogs and bitches.
Open, dogs and bitches.

DALMATIANS

Open, dogs and bitches. Winners, dogs and bitches.

GREAT DANES

Open, dogs and bitches. Winners, dogs and bitches.

BULLDOGS

Puppy, dogs and bitches. Open, dogs and bitches.
Novice, dogs and bitches. Winners, dogs and bitches.

BULL TERRIERS

Puppy, dogs and bitches. Winners, dogs and bitches.
Open, dogs and bitches.

PIT BULL TERRIERS

Open, dogs and bitches.

BOSTON TERRIERS

Open, dogs and bitches. Winners, dogs and bitches.

FOX TERRIERS (SMOOTH)

Puppy, dogs and bitches. Open, bitches.
Open, dogs. Winners, bitches.
Winners, dogs.

FOX TERRIERS (WIRE)

Puppy, dog and bitch. Winners' dog and bitch.
Open, dog and bitch.

IRISH TERRIERS

Open, dog. Open, bitch.
Winners, dog. Winners, bitch.

SCOTTISH TERRIERS

Open, dog. Open, bitch.
Winners, dog. Winners, bitch.

POMERANIAN

Open, dog and bitch.

AIREDALES

Puppy, dog and bitch. Winners, dogs and bitches.
Open, dogs and bitches.

MISCELLANEOUS

Open, dogs and bitches Open, dogs and bitches
(Under 25 pounds) (Under 25 pounds)

Entries close July 13th, 1911.

Brace Prize Sweepstakes can be made in each breed for the best two dogs of such breed, irrespective of sex, belonging to the same owner. The dogs comprising a brace need not be named at time of entry but simply entered as Mr.....'s brace, Entry fee for each brace \$2.00, all money going to the winner.

Sweepstake Kennel Prize (open to all breeds): For best kennel of not less than four dogs of any one breed owned by one exhibitor. The dogs comprising a kennel need not be named at time of entry, but simply entered as Mr.....'s kennel. Entry fee \$5.00 each kennel. Stakes to be divided equally first and second. Ten dollars in addition given to winner of first prize.

Additional special prizes will also be given.

Dairy Products

BUTTER

Butter, or packages containing it, must not be branded or exhibit any marks before being judged.

In making up your exhibit use tubs in preference to crocks; they are cheaper and more suitable for shipping purposes.

Packages should be covered with burlap or cotton to prevent soiling in transit and in handling.

Packages must contain full weight of butter called for, but not more.

Packages should be perfectly plain on top and prints should be made without any ornamentation.

Class 60 CREAMERY BUTTER

Sec.	1st.	2nd.	3rd.
1. Two packages of not less than 50 lbs. in prints...	\$30	\$20	\$10
2. One package 14 lbs. and one package 28 lbs.....	30	20	10
3. Exhibits in sections 1 and 2 scoring over 92 points will be awarded a prize of one dollar for each point, or fraction thereof, above 92.			
4. Sweepstakes, best butter in sections 1 and 2.			
	Exhibition Diploma.		

Class 61 DAIRY BUTTER

Sec.	1st.	2nd.	3rd.	4th.	5th.
1. One pound prints, not less than five pounds, done up in parchment paper	\$25	\$20	\$15	\$10	\$5
2. Package, not less than 20 lbs. (crock or tub)	25	20	15	10	5
3. Granular butter in brine, not less than three pounds	15	10	5		

SPECIAL BY THE CANADIAN BANK OF COMMERCE.

Regina Branch, H. F. Mytton, Manager.

Sweepstakes for the best butter in sections 1 and 2—Silver Medal

SPECIAL—GIVEN BY THE PETRIE MFG., CO. LIMITED.

For the Best 5 pounds "MAGNET" Cream Separator Butter:

1st Prize—3,000 sheets Magnet Separator Butter Paper.

2nd Prize—2,000 sheets Magnet Separator Butter Paper.

3rd Prize—1,000 sheets Magnet Separator Butter Paper.

CONDITIONS OF AWARDS

1. Amount of butter exhibited in one pound rolls or prints.
2. Each party on entering for a "MAGNET" prize must file with the Secretary of the Fair a certificate giving the number of the "MAGNET" Cream Separator used in skimming the cream from which the butter was made, and also the name of the owner of the separator.

Entries close July 8th, 1911

Class 62**CHEESE**

Sec.	1st.	2nd.	3rd.
1. Cheese, two, factory (white or colored), 70 lbs. or over, make of current season.....	\$20	\$15	\$10
2. Cheese, two, factory (white or colored), small, make of current season.....	20	15	10
3. Sweepstakes, best factory cheese.....	Exhibition	Diploma	
4. Cheese, home made.....	12	8	5
5. Cream cheese, home made.....	12	8	5

Class 63 DOMESTIC, COUNTRY HOME

Sec.	1st.	2nd.	3rd.
1. Bread, home made, 2 lb. loaf.....	\$6	\$4	\$2
2. Buns, home made, 3 varieties.....	3	2	1
3. Hams, home cured.....	5	3	2
4. Bacon, home cured, full side.....	5	3	2
5. Soap, home made, not less than 2 lbs.....	3	2	1
6. Wild fruit, canned, four varieties.....	3	2	1
7. Wild fruit, preserved, four varieties.....	3	2	1
8. Home made wine, three bottles.....	3	2	1
9. Pickles, collection	3	2	1
10. Catsup, collection	2	1	.50

SPECIAL BY ROBERT M. MOORE & CO., MOORE LIGHTING SYSTEMS, VANCOUVER AND REGINA.

To the farmer in Saskatchewan winning the largest amount of prize money in Class 63.

First—One light, Moore Lighting System (value \$25).

Second—One table lamp (value \$15).

These prizes can be seen in the Industrial Building at the Moore Lighting System exhibit.

Entries close July 8th, 1911

Agricultural Products

Class 64 SHEAF GRAINS AND GRASSES

Sec.	1st.	2nd.	3rd.
1. Sheaf of spring wheat grown in 1911.....	\$5	\$3	\$2
2. Sheaf of fall wheat grown in 1911.....	5	3	2
3. Sheaf of oats grown in 1911.....	5	3	2
4. Sheaf of barley grown in 1911.....	5	3	2
5. Sheaf of rye grown in 1911.....	5	3	2
6. Sheaf of alfalfa grown in 1911.....	5	3	2
7. Sheaf of red clover grown in 1911.....	5	3	2
8. Sheaf of brome grass grown in 1911.....	5	3	2
9. Sheaf of western rye grass grown in 1911.....	5	3	2
10. Sheaf of timothy grown in 1911.....	5	3	2
11. Six best stalks of corn grown in 1911.....	5	3	2
12. Sheaf of flax grown in 1911.....	5	3	2
13. Sheaf of field peas grown in 1911.....	5	3	2
14. Best separate collection of sheaves grown in 1911	15	12	8

NOTE.—All sheaves must be six inches in diameter or over.

Class 65 FIELD ROOTS

	1st.	2nd.	3rd.
1. 1 bushel potatoes, white	\$3	\$2	\$1
2. 1 bushel potatoes, red	3	2	1
3. 6 turnips	3	2	1
4. 6 carrots	3	2	1
5. 6 mangel wurzels	3	2	1
6. 6 sugar beets	3	2	1
7. Best special collection of field roots, three of each kind (potatoes excluded).....	9	6	3

Class 66 FRESH FRUITS

	1st.	2nd.	3rd.
1. Currants, black, on stalk.....	\$3	\$2	\$1
2. Currants, white, on stalk.....	3	2	1
3. Currants, red, on stalk.....	3	2	1
4. Gooseberries, one pint.....	3	2	1
5. Raspberries, red, one quart.....	3	2	1
6. Raspberries, white, one quart.....	3	2	1
7. Strawberries, one pint.....	3	2	1
8. Best separate collection of fruits, not less than five varieties, one pint of each.....	8	5	3
9. Best collection of wild fruit.....	5	3	2

Entries close July 8th, 1911

Class 67

Vegetables

	Sec.	1st.	2nd.	3rd.
3rd. \$2	1. Asparagus, best bunch.....	\$2	\$1	\$.50
2	2. Beans, wax or kidney, one quart.....	2	1	.50
2	3. Beans, broad or Windsor, one quart.....	2	1	.50
2	4. Beans, any other variety, one quart.....	2	1	.50
2	5. Beets, long, bunch of five.....	2	1	.50
2	6. Beets, round, bunch of five.....	2	1	.50
2	7. Cabbage, early, three heads.....	2	1	.50
2	8. Cabbage, late, three heads.....	2	1	.50
2	9. Cabbage, red, three heads.....	2	1	.50
2	10. Cabbage, savoy, three heads.....	2	1	.50
2	11. Best collection of cabbages, one of each, not less than four varieties.....	4	2	1.00
2	12. Cauliflower, four heads.....	3	2	1.00
2	13. Carrots, short, bunch of six.....	2	1	.50
8	14. Carrots, long, bunch of six.....	2	1	.50
	15. Celery, white plume, six roots.....	2	1	.50
	16. Celery, any other variety, six roots.....	2	1	.50
	17. Corn, squaw, six cobs.....	2	1	.50
	18. Corn, any other variety, six cobs.....	2	1	.50
	19. Cucumber, long frame, two.....	3	2	1.00
	20. Cucumber, garden or ridge, six.....	2	1	.50
3rd. \$1	21. Cucumber, pickling, one quart.....	2	1	.50
1	22. Citron, two.....	2	1	.50
1	23. Leeks, six roots.....	2	1	.50
1	24. Lettuce, cabbage, three heads.....	2	1	.50
1	25. Lettuce, cos, three heads.....	2	1	.50
1	26. Kohl Rabi, three roots.....	2	1	.50
1	27. Melon, musk.....	2	1	.50
3	28. Marrow, English vegetable, two.....	2	1	.50
	29. Marrow, long white bush, two.....	2	1	.50
	30. Marrow, crook neck, two.....	2	1	.50
	31. Onions, from sets, red, bunch of six.....	2	1	.50
	32. Onions, from sets, yellow or any other color, bunch of six.....	2	1	.50
	33. Onions, spring sown, red, bunch of six.....	2	1	.50
3rd. \$1	34. Onions, spring sown, yellow or any other color, bunch of six.....	2	1	.50
1	35. Onions, pickling, one quart.....	2	1	.50
1	36. Onions, multipliers or shallots, one quart....	2	1	.50
1	37. Parsnips, bunch of six.....	2	1	.50
1	38. Parsley, three roots.....	2	1	.50
1	39. Peas in pod, best collection, not less than three varieties, one quart of each.....	3	2	1.00
1	40. Potatoes, pink variety, one peck.....	2	1	.50
1	41. Potatoes, white variety, one peck.....	2	1	.50
3	42. Potatoes, best collection, not less than three varieties, one peck of each.....	5	3	2.00
2	43. Radishes, round, two bunches of 12 each....	2	1	.50
	44. Radishes, long, two bunches of 12 each....	2	1	.50

Entries close July 8th, 1911

Sec.	1st.	2nd.	3rd.
45. Rhubarb, pink or early variety, six stalks....	\$2	\$1	\$.50
46. Rhubarb, green or giant variety, six stalks..	2	1	.50
47. Squash	2	1	.50
48. Tomatoes, ripe, best plate not less than four..	2	1	.50
49. Tomatoes, green, not less than four.....	2	1	.50
50. Turnips, Swede, not less than six for table use	2	1	.50

SPECIAL BY THE CANADIAN BANK OF COMMERCE.

Regina Branch, H. F. Mytton, Manager.

51. Best separate collection of vegetables to be judged for proper staging as well as quality of exhibit..... Silver Medal
- Money prize added to the above by the Association \$6 \$4 \$2 \$1

SPECIAL PRIZE—OFFERED BY A. E. MCKENZIE CO., LTD., SEEDMEN.

Brandon, Man., and Calgary, Alta.

52. For the best collection of vegetables, grown from McKenzie's seeds \$5 cash

EXTRA SPECIAL PRIZE OFFERED BY A. E. MCKENZIE CO., LTD., SEEDSMEN.

Brandon, Man., and Calgary, Alta.

53. To the exhibitor in Saskatchewan, Manitoba, Alberta and British Columbia who wins the most prizes with vegetables grown from McKenzie's seeds \$25 cash

SPECIAL by Steele Briggs Seed Co., Ltd., Winnipeg, Man.

54. For Collection of Vegetables, grown from Steele Briggs' Seeds.
 1st Prize (\$15.00) value in seeds selected from 1912 Cat.
 2nd Prize (\$10.00) value in seeds, selected from 1912 Cat.
 3rd Prize (\$5.00) value in seeds, selected from 1912 Cat.
 Exhibits to be carded "STEELE BRIGGS' SPECIAL." Steele Briggs will supply the cards free.

Horticulture

Class 68 HOUSE PLANTS AND CUT FLOWERS—OPEN

Sec.	1st.	2nd.	3rd.
1. Collection of plants, not less than twelve, not to exceed two of each kind.....	\$10	\$6	\$4
2. Collection of geraniums, three varieties, one single, one double, one ivy-leaved or variegated	3	2	1

Entries close July 8th, 1911

PRIZE LIST

57

Sec.	1st.	2nd.	3rd.
3. Collection of begonias, not less than six plants, nontuberous	\$5	\$3	\$2
4. Collection of tuberous begonias, not less than six plants	5	3	2
5. Specimen flowering plant.....	3	2	1
6. Specimen foliage plant.....	3	2	1
7. Hanging basket	3	2	1
8. Lawn vase, arranged for effect.....	3	2	1
9. Window box, best arranged.....	3	2	1
10. Floral design, diploma to first, and.....	5	3	2
11. Bouquet, bridal or otherwise, diploma to first, and.....	5	3	2
12. Carnations, best vase, not less than 24 blooms of one variety	4	2	1
13. Lily of the valley, 50 spikes.....	4	2	1
14. Roses, best vase not less than 24 blooms of any one variety	6	4	2
15. Collection of cut flowers, greenhouse or otherwise	5	3	2

Class 69 HOUSE PLANTS (Amateur)

Sec.	1st.	2nd.	3rd.
1. Collection of plants, not less than six, not to exceed two of each kind.....	\$5	\$3	\$2.00
2. Collection tuberous begonias (double) not less than three	3	2	1.00
3. Collection of flowering begonias, not including tuberous, not less than three.....	3	2	1.00
4. Collection of tuberous begonias (single), not less than three.....	3	2	1.00
5. Asparagus plumosus, one plant.....	2	1	.50
6. Asparagus sprengeri, one plant.....	2	1	.50
7. Cactus	2	1	.50
8. Calceolaria	2	1	.50
9. Coleus	2	1	.50
10. Fern, Boston	2	1	.50
11. Fern, any other variety.....	2	1	.50
12. Fuschia	2	1	.50
13. Geranium, single	2	1	.50
14. Geranium, double	2	1	.50
15. Geranium, ivy leafed	2	1	.50
16. Geranium, variegated	2	1	.50
17. Hydrangea in bloom.....	2	1	.50
18. Pelargonium, in bloom	2	1	.50
19. Petunia	2	1	.50
20. Primula, Chinese variety.....	2	1	.50
21. Primula, any other variety.....	2	1	.50
22. Mimulus (musk plant).....	2	1	.50
23. Palm	2	1	.50
24. Rose plant, in bloom.....	2	1	.50
25. Rubber plant	2	1	.50
26. Specimen foliage plant, any variety.....	2	1	.50
27. Specimen flowering plant, any variety.....	2	1	.50
28. Hanging basket	2	1	.50
29. Window box	2	1	.50

Entries close July 8th, 1911

Class 70 CUT FLOWERS (Amateur)

In judging this class the manner in which exhibits are displayed will be taken into consideration in making the awards.

Sec.	1st.	2nd.	3rd.	4th.
1. Antirrhynums, collection of six varieties, one of each	\$2	\$1	\$.50
2. Asters, not less than three varieties, two of each	2	1		.50
3. Canterbury bells, not less than three spikes	2	1		.50
4. Carnations, three varieties, three of each	2	1		.50
5. Dahlias, collection not less than six varieties	2	1		.50
6. Dianthus or pinks, collection of six varieties, two of each	2	1		.50
7. Gladiolus, not less than four varieties	2	1		.50
8. Hollyhocks, not less than three spikes	2	1		.50
9. Marigolds, not less than two varieties, four blooms of each	2	1		.50
10. Nasturtiums, best collection, not less than three blooms of each variety	2	1		.50
11. Pansies, collection of six varieties	2	1		.50
12. Pansies, collection of twelve varieties	2	1		.50
13. Petunias, double, collection of four varieties, one of each	2	1		.50
14. Petunias, single, collection of six varieties, one of each	2	1		.50
15. Phlox, collection of four varieties, one of each	2	1		.50
16. Salpiglossis, collection of four varieties, one each	2	1		.50
17. Scabiosa, collection of three varieties, one of each	2	1		.50
18. Stocks, collection of four varieties, one of each	2	1		.50
19. Sweet peas, collection of six named varieties, not less than six heads of each	3	2		1.00
20. Sweet peas, collection of twelve named varieties, not less than six heads of each	3	2		1.00
21. Sweet peas, best collection of named varieties, not less than six heads of each. First, Silver Cup, and	6	4	3.00	\$2
22. Sweet peas, best arranged vase	6	4	3.00	2
23. Sweet William, collection of four varieties, one of each	2	1		.50
24. Roses, not less than three varieties	3	2		1.00
25. Verbenas, collection of four varieties, one of each	2	1		.50
26. Zinnias, collection of four varieties, one of each	2	1		.50
27. Best collection of annuals in separate bunches	5	3		2.00
28. Best collection of perennials, in separate bunches	3	2		1.00
29. Bouquet of garden flowers	4	2		1.00
30. Bouquet of wild flowers	3	2		1.00

Entries close July 8th, 1911

SPECIAL BY STEELE, BRIGGS SEED CO., LIMITED.
Winnipeg, Man.

31. Competition open only to pupils up to 16 years attending school.
Best exhibit of sweet peas, twelve named varieties, eight to twelve stems of each, grown from Steele Briggs Seeds, each variety to be correctly named. \$10 \$7 \$5.00

Industrial Department

Class 71 NATURAL HISTORY

Sec.	1st.	2nd.
1. Animals, indigenous to Canada, stuffed and mounted..	\$20	\$15
2. Animals' heads, indigenous to Canada, stuffed and mounted	15	10
3. Birds, indigenous to Canada not less than ten, stuffed and mounted	10	5
4. Collective exhibit of animals and birds, indigenous to Canada, stuffed and mounted.....	25	20
5. Preserved specimens of plants (named), injurious to agriculture	10	5
6. Indian beadwork, implements and other manufactures	10	5
7. Best collection of wild flowers, pressed and named....	10	5
8. Best collection of native grasses, named.....	10	5

Ladies' Work, Etc.

Exhibits competing for prizes must be the production of the exhibitor and have been made in Canada. No unfinished work can be awarded a prize. Articles presented for competition must be fresh and clean.

All exhibits must be delivered by 2 p. m. Monday, July 31st.

Class 72 PROFESSIONAL OR AMATEUR

Suitable cases will be provided for fine exhibits.

No article can be shown in sections 4, 5, 6 and also in Class 73.

Sec.	1st.	2nd.
1. Best collection of drawn work	\$10	\$5
2. Best collection of embroidery	10	5
3. Best collection of lace work	10	5
4. Best sample drawn work.....	2	1
5. Best sample embroidery	2	1
6. Best sample lace work	2	1

Entries close July 8th, 1911

Class 73**AMATEURS**

Amateurs are understood as those who do not make fancy work for a livelihood, or habitually sell or offer for sale their productions.

Suitable cases will be provided for fine exhibits.

Entry fee, 25 cents for first entry and 10 cents for each additional entry.

LACE

Sec.	1st.	2nd.
1. Crochet	\$2	\$1
2. Point or Honiton	3	1
3. Battenburg	3	1
4. Duchess	3	1
5. Teneriffe	2	1
6. Irish	2	1
7. Princess	2	1
8. Centre piece, lace	2	1

EMBROIDERY

9. Cross stitch on canvas	2	1
10. Embroidery on silk or satin	2	1
11. Embroidery on cotton	2	1
12. Embroidery, linen, sideboard scarf	2	1
13. Embroidery, bolting cloth, sofa pillow or centre piece	2	1
14. Embroidery, eyelet, tea or tray cloth	3	1
15. Embroidery, eyelet	2	1
16. Embroidery on towels, initial or monogram	2	1
17. Embroidery, outline work	3	1
18. Embroidery, Russian	2	1
19. Embroidery, Mount Mellick work	2	1
20. Embroidery, Roman	2	1
21. Embroidery, linen sofa cushion in colors	2	1
22. Embroidery, sofa cushion, outline	2	1
23. Embroidery, Bulgarian	2	1
24. Embroidery, jewel	2	1
25. Embroidery, Wallachian	2	1
26. Embroidery, Hardanger	2	1
27. Embroidered photograph frame, handkerchief, tie or veil case	2	1
28. Embroidered ribbon work	2	1
29. Embroidered centre piece (in white)	2	1
30. Embroidered tray cloth	2	1
31. Embroidered pair of slippers	2	1
32. Embroidered infant's shawl	2	1
33. Embroidered tea cloth in colors	3	1
34. Embroidered tea cloth in white	3	1
35. Embroidered collars, stocks	2	1
36. Embroidered pillow shams	2	1
37. Embroidered shirt waists	2	1
38. Embroidered table linen, three pieces	2	1

Entries close July 8th, 1911

DRAWN WORK

Sec.	1st.	2nd.
39. Drawn work, tea cloth.....	\$2	\$1
40. Drawn work, sideboard scarf.....	2	1
41. Drawn work, tray cloth.....	2	1
42. Drawn work, pillow shams.....	2	1
43. Drawn work, Mereshg.....	2	1

MISCELLANEOUS

44. Tea cosy.....	2	1
45. Toilet set.....	2	1
46. Braiding.....	2	1
47. Fillet work.....	2	1
48. Netting.....	2	1
49. Hemstitching.....	2	1
50. Sofa cushion top in silk or satin.....	2	1

CROCHET AND KNITTED WORK

51. Infant's jacket, crocheted or knitted.....	2	1
52. Sweater, crocheted or knitted.....	2	1
53. Infant's hood, crocheted or knitted in silk.....	2	1
54. Infant's booties, crocheted.....	2	1
55. Infant's booties, knitted.....	2	1
56. Crochet work, silk.....	2	1
57. Afghan, crocheted in wool.....	2	1
58. Crochet work, wool.....	2	1
59. Crochet work, cotton.....	2	1
60. Crochet work, four table mats.....	2	1
61. Knitted socks in wool.....	2	1
62. Knitting—silk, wool, cotton—one piece each.....	2	1
63. Knitted mittens, plain, in wool.....	2	1
64. Knitted mittens, fancy, in wool.....	2	1
65. Knitted mittens, silk.....	2	1
66. Quilt, knitted.....	2	1
67. Quilt, crocheted.....	2	1

SEWING, DARNING, QUILTS. Etc.

68. Child's linen or lawn frock.....	2	1
69. Apron, hand made.....	2	1
70. Shirt waist.....	2	1
71. Ladies' underclothing.....	2	1
72. Ladies' underclothing, machine.....	2	1
73. Pin cushion.....	2	1
74. Darning pair of stockings.....	2	1
75. Mat, home made.....	2	1
76. Quilt, cotton patchwork.....	2	1
77. Quilt, wool patchwork.....	2	1
78. Quilt, silk patchwork.....	2	1

Entries close July 8th, 1911

Paintings and Drawings

(Professional and Amateur)

Class 74 OIL PAINTINGS

Sec.	1st.
1. Life studies, portrait or figure.....	\$10
2. Life studies, animals	10
3. Landscape or marine.....	10

WATER COLORS

Sec.	1st.
4. Life studies, animals.....	\$10
5. Landscape or marine.....	10

Class 75 PAINTINGS AND DRAWINGS FOR AMATEURS

OIL PAINTINGS

Sec.	1st.
1. Life studies, portrait or figure, original.....	\$8.00
2. Life studies, animals, original.....	8.00
3. Landscape or marine, original.....	8.00

WATER COLORS

4. Life studies, animals, original	8.00
5. Landscape or marine, original	8.00
6. Flowers	8.00

GENERAL PAINTINGS AND DRAWINGS

Sec.	1st.	2nd.
7. Miniature	\$5.00	\$3.00
8. Painting on silk or satin (water color or oil)....	3.00	1.50
9. Pastel, any subject.....	3.00	1.50
10. Painting on leather.....	3.00	1.50
11. Monochrome, pencil, crayon or sepia, any subject	3.00	1.50

CHINA PAINTING, NATURALISTIC

Sec.	1st.	2nd.
12. Vase	\$3.00	\$1.50
13. Tea set, three tea pieces and two cups and saucers	3.00	1.50
14. Half dozen plates.....	3.00	1.50
15. Brush and comb tray.....	3.00	1.50

Entries close July 8th, 1911

CHINA PAINTING, CONVENTIONAL

Sec.	1st.	2nd.
16. Vase	\$3.00	\$1.50
17. Tea set	3.00	1.50
18. Half dozen plates.....	3.00	1.50
19. Brush and comb tray.....	3.00	1.50
20. Best collection, either conventional or naturalistic	6.00	4.00

Class 76 HANDICRAFTS

Sec.	1st.	2nd.
1. Wood-carving relief	\$5	\$3
2. Wood-carving chip	3	2
3. Collection of wood-carving.....	6	4
4. Burnt leather, best sample.....	3	2
5. Collection of pyrography.....	3	2
6. Best piece of marquetry work.....	3	2
7. Specimen of modelling in clay or other material (in the round)	3	2
8. Specimen of clay modelling (in relief).....	2	1

Class 77 PHOTOGRAPHY, PROFESSIONAL

All Exhibits must be from Exhibitor's negatives, and finished by him or those in his immediate employ.

Sec.	1st.	2nd.
1. Portrait	\$6	\$4
2. Views, collection of not less than six.....	6	4
3. Best collection of farm scenes in Western Canada....	6	4
4. Collective exhibit of photographs.....	Exhibition Diploma	

Class 78 PHOTOGRAPHY, AMATEURS

All work must be entirely that of the Exhibitor, including Taking, Developing, Finishing, etc. Amateurs are those who do not habitually sell or offer for sale their productions.

Sec.	1st.	2nd.	3rd.
1. Collection of landscapes, not less than six.....	\$4	\$3	\$2
2. Interiors, collection of three.....	3	2	1
3. Home portraiture	3	2	1
4. Bromide enlargement	4	3	2

Class 79 School Section

NOTE.—Exhibits from any school must be accompanied by a teacher's certificate to the effect that the work shown is that of the pupils; and that no alterations or additions have been made by the teacher and no suggestions made apart from the regular teaching.

Unless specifically stated exhibits are open to both graded and ungraded schools.

Sec.	1st.	2nd.	3rd.
1. Collective exhibit of pupils' work from any one ungraded school, including work in penmanship, composition, arithmetic, geography, history	\$3.00	\$2.00	\$1.00
2. Collective exhibit of pupils' work from any one graded school	3.00	2.00	1.00
3. Geography map (modelled in relief)	1.00	.75	.50
4. Series of maps of Canada showing: (1) Outline, relief and drainage; (2) Climate and natural products. (3) Waterways, railways and great centres of population....	2.00	1.50	1.00
5. A map of Saskatchewan showing: (1) Relief and drainage; (2) Natural products; (3) Centres of population, railways....	1.50	1.00	.75
6. Specimen of penmanship, 75 words (under 12 years of age)	1.00	.75	.50
7. A business letter written on foolscap (12 years and over)	1.50	.75	.50
8. Exhibit of work books used by a pupil during the last school term, immediately preceding the exhibition. These books must show the daily work of the school as far as such work can be shown in work books	2.00	1.50	1.00
9. Best kindergarten exhibits made by one school to cover full range of kindergarten work	2.00	1.00	.50
10. Individual samples on kindergarten work open to children under seven years of age.	1.00	.75	.50
11. Collection of native woods, named.....	1.00	.75	.50
12. Collection of plants, made by individual exhibitor, named, pressed and mounted....	1.50	1.00	.75
13. Collection of noxious weeds made by individual exhibitor, named, pressed and mounted	1.00	.75	.50

DRAWING AND DESIGN

(Children 12 and over)

14. Decorative design in black and white (wall paper, book cover or other similar problem)	1.50	1.00	.50
15. Decorative design in color.....	1.50	1.00	.50
16. Design for stencil (border, cushion or curtain	1.50	1.00	.50

Entries close July 8th, 1911

PRIZE LIST

65

Sec.	1st.	2nd.	3rd.
17. Design for piece of constructive work in wood or metal	\$1.50	\$1.00	\$.50
18. Specimen of geometrical drawing—plane or solid	1.50	1.00	.50
19. A group of still life in black and white.....	1.50	1.00	.50
20. A group of still life in colors ..	1.50	1.00	.50
21. A group of still life with fruits or vegetables, in black and white.....	1.50	1.00	.50
22. A group of still life with fruits or vegetables, in colors	1.50	1.00	.50
23. Landscape in tones of one color (sepia, blue or grey)	1.50	1.00	.50
24. Landscape in colors.....	1.50	1.00	.50
25. Drawing of plant form in pencil or pen and ink	1.50	1.00	.50
26. Drawing of flower or fruit in colors.....	1.50	1.00	.50

(Children under 12 years)

27. Design (tile, border or similar problem in black and white)	1.00	.50
28. Design (tile, rug or similar problem in colors)	1.00	.50
29. Illustration of story, game or song in silhouette	1.00	.50
30. Illustration of story, game or song in colors	1.00	.50
31. Drawing of an inanimate object, in pencil..	1.00	.50
32. Drawing of an inanimate object, in colors..	1.00	.50
33. Specimen of mechanical drawing.....	1.00	.50

HANDICRAFT

(Eighteen years and under)

34. Piece of rattan, cane or willow work.....	1.50	1.00	.50
35. Piece of raffia, reed, or grass work.....	1.50	1.00	.50
36. Piece of modelling in clay or other material) in the round	1.00	.75	.50
37. Piece of modelling in clay—in relief.....	1.00	.75	.50
38. Piece of paper work (manilla, cover paper, etc.)	1.00	.75	.50
39. Piece of cardboard work (pulp board, bristol board, etc.)	1.00	.75	.50
40. Piece of woodwork (plain, stained or varnished)	1.50	1.00	.50
41. Piece of woodwork (decorated with pyrography)	1.50	1.00	.50
42. Piece of woodwork (carved).....	1.50	1.00	.50
43. Piece of work made of wood and copper or brass	1.50	1.00	.50
44. A mechanical model	1.50	1.00	.50
45. A simple toy	1.50	1.00	.50
46. A piece of wood turning.....	1.00	.75	.50
47. A piece of wire work.....	1.00	.75	.50
48. A piece of jointed sheet metal work.....	1.50	1.00	.50
49. A piece of hammered sheet metal work.....	1.50	1.00	.50

Entries close July 8th, 1911

(Under 12 years)

Sec.	1st.	2nd.	3rd.
50. A piece of clay modelling.....	\$1.00	\$.75	\$.50
51. A piece of paper or cardboard work.....	1.00	.75	.50
52. A piece of raffia or rattan work.....	1.00	.75	.50
53. A piece of weaving.....	1.00	.75	.50

COOKING

(Eighteen years or under)

54. Bread, two loaves baked in one pan about 7 in. x 4 in. x 3 in.....	1.50	.75	
55. Rolls, six	1.00	.50	
56. Biscuits, six	1.00	.50	
57. Muffins, six	1.00	.50	
58. Standard cake	1.00	.50	
59. Three pints canned fruit (three varieties)..	1.00	.50	
60. Three pints pickles (three varieties).....	1.00	.50	
61. Three pints jam (three varieties))).....	1.00	.50	
62. Three pints jelly (three varieties).....	1.00	.50	
63. Three pints marmalade (three varieties)....	1.00	.50	

SEWING

(Eighteen years and under)

64. Three piece set of underwear (underskirt, underwaist, drawers (handmade)	2.50	1.50	1.00
65. Night dress (handmade).....	1.50	1.00	.50
66. Underwaist (handmade)	1.50	1.00	.50
67. Underskirt (machine)	1.50	1.00	.50
68. Drawers (machine)	1.50	1.00	.50
69. Napery, hemmed table napkin. hemstitched towel	1.00	.75	.50
70. Samples of each of the following: (1) Felled seam; (2) French seam; (3) Plain seam (overcast); (4) Overhanded seam.....	1.00	.75	.50
71. Six button-holes, as follows: two plain, two barred, two tailored.....	1.00	.75	.50
72. Mending, samples of each of the following: (1) Tweed or darned patch; (2) Over- handed (gingham); (3) Hemmed (ging- ham)	1.00	.75	.50
73. Darning, each of the following: (1) Worn hole (cotton); (2) Worn hole (wool)....	1.00	.75	.50
74. Knitting, each of the following: (1) Plain; (2) Fancy	1.00	.75	.50
75. Crochet work (cotton or linen)	1.00	.75	.50
76. Embroidery on linen.....	1.00	.75	.50
77. Apron, with lace.....	1.00	.75	.50
78. Handkerchief75	.50	
79. Kimona	1.00	.75	.50

Entries close July 8th, 1911

Class 80 DISTRICT COLLECTIVE EXHIBITS

Exhibits in this class limited to Agricultural Societies or Boards of Trade, exhibiting in the name of the Society or Board, provided, that in Districts in which there is no organised Agricultural Society or Board of Trade, one or more individuals may compete in the name of the District.

All exhibits must be grown or manufactured in the Districts exhibiting and be produced in 1910 or 1911.

The following prizes are offered for District Exhibits: 1st \$200; 2nd \$150; 3rd \$100, 4th \$75, 5th \$50.00.

The Association have made ample provision for space in one of their buildings for as many District Exhibits as may make entry, and urge the Districts throughout the Province to make every effort to bring before the public in this way the resources of their particular districts.

Class 81 INDIAN EXHIBITS

(Open to all treaty Indians)

Sec.	1st.	2nd.	3rd.
1. Yoke of oxen, hitched to wagon.....	\$10	\$6	\$4.00
2. Team of horses, mares or geldings, in harness to wagon	20	12	8.00
3. Mare, with foal at foot.....	10	6	4.00
4. Saddle horse, mare or gelding.....	10	6	4.00
5. Two-year-old, filly or gelding.....	8	5	3.00
6. One bushel wheat, grown in 1910.....	5	3	2.00
7. One bushel oats, grown in 1910.....	5	3	2.00
8. Sheaf of wheat, not less than five inches in diameter	3	2	1.00
9. Sheaf of oats, not less than five inches in diameter	3	2	1.00
10. Potatoes, pink variety, one peck.....	2	1	.50
11. Potatoes, white variety, one peck.....	2	1	.50
12. Potatoes, best collection, one peck of each....	3	2	1.00
13. Onions, spring sown, bunch of six.....	2	1	.50
14. Onions, from sets, bunch of six.....	2	1	.50
15. Carrots, bunch of six.....	2	1	.50
16. One dozen hen eggs.....	2	1	.50
17. Bread, homemade, 2 lb. loaf.....	2	1	.50
18. Patchwork quilt	3	2	1.00
19. Lady's apron	3	2	1.00
20. Homemade flannel shirt	3	2	1.00
21. Pair of hand knitted socks.....	2	1	.50
22. Child's dress	3	2	1.00
23. Boy's suit	3	2	1.00
24. Best pair moccasins	2	1	.50
25. Best collection beadwork	\$20 10	6	4.00
26. Best collection Indian curios	20 10	6	4.00

Entries close July 8th, 1911

PROGRAMME OF RACES

DOMINION EXPOSITION

Regina, Sask., July 31--Aug. 12, 1911

Rules Governing Races:

ENTRY FEES

In all Purse Races entry fee 5 per cent. of purse, which amount must accompany entry; 5 per cent. additional from winners.

In Stake Races the entry fee is payable as follows: 1 per cent. April 1, when all Stake Races close; 1 per cent. May 1, and 1 per cent. June 1, when horses must be named; 2 per cent. July 22. A horse may be declared out at any time on written notice being given, accompanied by entry fees then due.

Stakes not filling to the satisfaction of the Directors may be declared off, but the Association will notify nominators within fifteen days of stakes closing.

Purses and stakes divided as follows: Trotting and pacing events, 50 per cent. to first, 25 per cent. to second, 15 per cent. to third, 10 per cent. to fourth. Running events, 65 per cent. to first, 25 per cent. to second, 10 per cent. to third.

Five to enter, four to start in all races. Any horse distancing the field entitled to first money only.

In all running races, maidens at starting allowed 5 lbs.

The Association claims the right to interlace heats of different races, as well as to alter the order of events, when they deem it expedient; also to postpone on account of bad weather or other reasonable cause.

If, owing to bad weather or other unavoidable cause, the Association shall be unable to start one or more of the races at or before 4 p.m. of the last day of the meeting, such race may or may not be declared off, by the decision of the Speed Committee.

All races conducted under the rules and regulations of the American Trotting Association. Running races under the Racing Rules governing the same.

Entries close July 22, 1911, except where otherwise specified.

Entries close July 22nd, 1911.

Tuesday, August 1st

- | | | |
|---|----------|-----|
| 1. Free for All Trot..... | Purse \$ | 600 |
| 2. Three minute trot or pace, for horses bred in
Canada | " | 400 |
| 3. Six furlongs dash, running, for horses bred in
Canada | " | 300 |
| 4. Half mile heats, running, two in three..... | " | 300 |

Thursday, August 3rd

- | | | |
|--|----------|-------|
| 5. 2.30 Trot | Stake \$ | 600 |
| 6. 2.30 Pace, 2.25 Trot..... | " | 1,000 |
| 7. One and a quarter mile dash, running..... | Purse | 350 |
| 8. Five furlongs dash, running, for 3-year-olds..... | " | 300 |
| 9. Relay Race, first heat..... | " | 100 |

Relay Race—Two miles a day for three days. Riders to change horses and saddles every half mile. Two horses only to be used. Thoroughbreds and professional running horses barred. Riders must use regular Western saddles, same to weigh not less than 25 lbs. Clips allowed, blinds allowed. One man allowed to hold fresh horse. Bridle need not be changed. Horses may be owned by different persons, but must be entered in their joint names. Horses to be used must be named and described and riders designated by noon two days previous to the first day of the race, and no change will be allowed except in case of accident, and then only by permission of the judges. Money to be divided in heats (\$100 each day). Five to enter, four to strat.

Saturday, August 5th

- | | | |
|--|----------|-------|
| 10. Hotel Keepers' Stake, 2.15 Pace, 2.10 Trot..... | Stake \$ | 1,500 |
| 11. 2.40 Pace, 2.35 Trot..... | Purse | 600 |
| 12. Six furlongs dash, running, for Canadian bred
3-year-olds | " | 300 |
| 13. One Mile Dash, running..... | " | 300 |
| 14. Relay Race, second heat..... | " | 100 |

Tuesday, August 8th

- | | | |
|---|----------|-----|
| 15. Trot or Pace, for three-year-olds, hobbles barred.. | Stake \$ | 600 |
| 16. 2.25 Pace, 2.20 Trot..... | Purse | 600 |
| 17. Seven furlongs dash, running..... | " | 300 |
| 18. Pony Race, for ponies 14 hands, 2 inches and under,
half mile heats, running, two in three, catch
weights | " | 200 |
| 19. Relay Race, third heat..... | " | 100 |

Wednesday, August 9th

- | | | |
|---|----------|-----|
| 20. Free for All Trot or Pace..... | Purse \$ | 600 |
| 21. 2.35 Pace, 2.30 Trot..... | " | 500 |
| 22. 2.15 Pace, 2.10 Trot..... | " | 600 |
| 23. Six furlongs dash, running..... | " | 300 |
| 24. One and a quarter mile dash, running, for horses
bred in Canada..... | " | 350 |

Entries close July 22nd, 1911.

Thursday, August 10th

25. 2.18 Trot	Purse \$	500
26. 2.19 Pace, 2.14 Trot.....	Stake	1,000
27. Six furlongs dash, running.....	Purse	300
28. One and one-eighth mile dash, running.....	"	300
29. Gentleman's Race, one mile dash, running, purse...	"	200

Open to horses that have never won a purse exceeding in value \$100 to the winner, and that have been the property of the nominator for at least three months prior to the date of the race. Professional riders barred. The decision of the committee as to the standing of any horse or rider shall be final.

Friday, August 11th

30. 2.25 Pace, 2.20 Trot (Consolation), for horses that have started at the meeting, but have not won first, second or third money.....	Purse \$	300
31. 2.20 Pace, 2.15 Trot (Consolation), for horses that have started at the meeting, but have not won first, second or third money.....	"	300
32. Five furlongs dash, running, for 2-year-olds....	"	250
33. Five furlongs dash, running.....	"	300
34. Consolation Race, one mile dash, running, for horses that have started at the meeting, but have not won first or second money.....	"	250

SASKATCHEWAN FAIR DATES, 1911

- (a) North Battleford.....June 26-28
 Saskatoon.....June 30-July 4
 Prince Albert.....July 5-8
- (b) SaltcoatsJuly 20
 Foam Lake.....July 27
 Churchbridge.....July 21
 Yorkton.....July 25-26
 Wynyard.....July 28
 Kelliher.....Aug. 2
 Nokomis.....Aug. 3
 Asquith.....Aug. 4
- (c) Mortlach.....July 18
 Swift Current.....July 19-20
 HerbertJuly 21
 Milestone.....July 25
 Moose Jaw.....July 25-28
- (d) Govan.....July 24-25
 Elstow.....July 26
 Lashburn.....July 28
 Lloydminster.....Aug. 1
 Zealandia.....Aug. 3
 Unity.....Aug. 4
- (e) Togo.....July 25
 Canora.....July 26
 Wadena.....July 27
 Quill Lake.....July 27-28
 Humboldt.....July 31-Aug. 1
 Vonda.....Aug. 2
 Rosethorn.....Aug. 3-4
- (f) Indian Head.....July 25-26
 Craik.....July 27
 Bladworth.....July 28
 Hanley.....July 31-Aug. 1
 Outlook.....Aug. 3
 Brownlee.....Aug. 4
- (g) Arcola.....July 25
 Stoughton.....July 26
 Weyburn.....July 27-28
 Alameda.....Aug. 1
 Oxbow.....Aug. 2
 Carnduff.....Aug. 3
 Gainsboro.....Aug. 4

(h)	Fort Qu'Appelle.....	July 26
	Strassburg	July 27-28
	Lipton.....	Aug. 1
	Abernethy.....	Aug. 2
	Dubuc.....	Aug. 3
	Stockholm.....	Aug. 4
(i)	Regina	July 31-Aug. 12
	Lumsden.....	Aug. 15
	Davidson.....	Aug. 16
(j)	Carlyle.....	July 26
	Kennedy.....	July 28
	Wolseley.....	Aug. 1-2
	Windthorst.....	Aug. 3
	Moosomin.....	Aug. 4
	Fairmede.....	Aug. 9
	Broadview.....	Aug. 10-11
	Qu'Appelle.....	Aug. 15-16
(k)	Francis.....	Aug. 10
	Creelman.....	Aug. 11
	Grenfell.....	Aug. 14-15
	Sintaluta.....	Aug. 16
	Whitewood.....	Aug. 17
	Wapella.....	Aug. 18
(l)	Tisdale.....	Sept. 12
	Melfort.....	Sept. 13-14
	Kinistino.....	Sept. 15
	Carlton.....	Sept. 19
	Duck Lake.....	Sept. 21
(m)	Maymont.....	Sept. 19
	Paynton.....	Sept. 20
	Radisson.....	Sept. 21
	Langham.....	Sept. 22
	Watson.....	Sept. 26
	Lanigan.....	Sept. 28
(n)	Maple Creek.....	Sept. 20-21

CALGARY INDUSTRIAL Exhibition

CALGARY, ALTA.

June 30 to July 7
1911

\$29,000 IN PRIZES AND
PURSES 2 2 2 2

Prize List and Race Programme now ready.

Music and Attractions to cost \$11,000. The
best that can be procured.

*Attendance at our 1910 Exhibition, 76,800.
Increase in attendance over previous
year, 21,000. Estimated attend-
ance for 1911, 100,000.

WE REFUND FREIGHT ON ALL ALBERTA EXHIBITS

President

I. S. G. VAN WART

Vice President

E. J. DEWEY

GENERAL MANAGER—E. L. RICHARDSON, Victoria Park,
Calgary

CANADIAN INDUSTRIAL Exhibition

WINNIPEG, -:- MAN.
JULY 12-22, 1911

**WESTERN CANADA'S PREMIER LIVE
STOCK SHOW**

\$40,000.00 In Prizes
and Purses

Canada's Best Harness Racing
Programme.

Attractions unequalled, including

CORONATION NAVAL REVIEW

Entries for Live Stock close June 30th. For further particulars apply to

W. SANFORD EVANS,
President

Dr. A. W. BELL,
Manager

Saskatoon Agricultural and Industrial == EXHIBITION ==

JUNE 30, JULY 1, 3 AND 4, 1911

David Douglas, Sec. Man., Room 3, Masonic Temple, Saskatoon

1911 FIXTURES

REMEMBER THESE DATES

Edmonton Spring Shows, April 26th and 27th.

Edmonton Spring Races, May 24 and 25th.

Edmonton Athletic Meet, July 1st.

EDMONTON EXHIBITION AND STOCK SHOW, AUG. 16th, 16th, 17th, 18th & 19th

EDMONTON FAT STOCK SHOW, DECEMBER 20, 1911

*For further information, write the Edmonton Exhibition Association, Ltd.,
Box 216, Edmonton, Alberta, Canada*

PROVINCIAL EXHIBITION

Queen's Park, New Westminster, B.C., Oct'r. 3, 4, 5, 6 & 7, 1911

T. J. TRAPP, Esq., President.

G. D. BRYMNER, Esq., Hon. Treasurer

\$50,000---In Prizes and Attractions---\$50,000

Largest and Best Agricultural, Horticultural and Floricultural Exhibition in Western
Canada. Splendid Prizes for Horses, Cattle, Sheep, Swine and Poultry.

—SEND FOR PREMIUM LIST—

W. H. KEARY, Manager and Secretary, . . . P. O. Box 59, New Westminster, B.C.

== MOOSE JAW == Agricultural Society Fair, 1911

JULY 25th—OPENING DAY

JULY 26th—FARMERS' DAY


JULY 27th—VISITORS' DAY

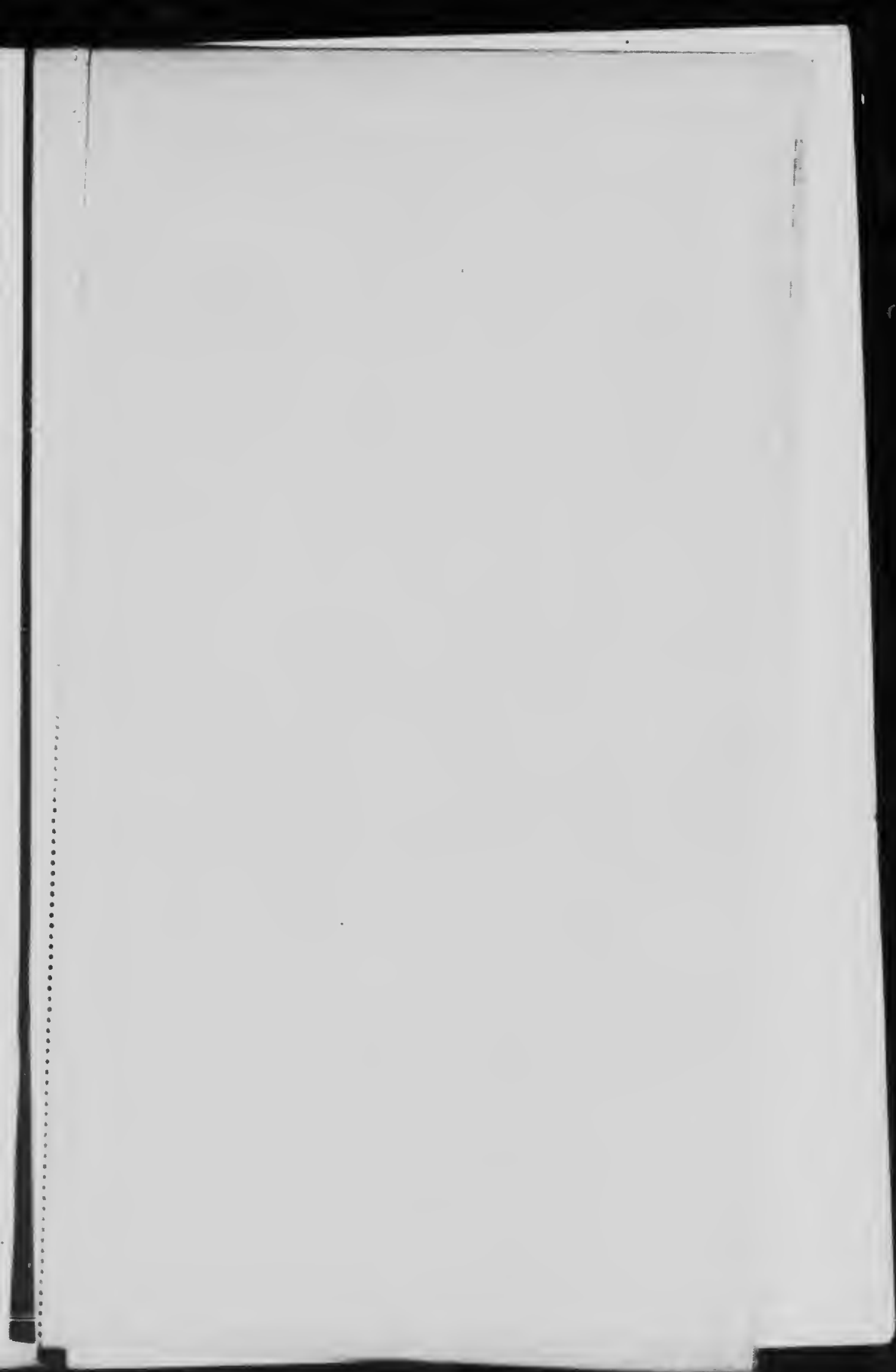
JULY 28th—CITIZENS' DAY

— FOR PRIZE LISTS WRITE TO —

HUGH McKELLAR, Secretary

BOX 922, MOOSE JAW, SASK.


THE LEADER PUBLISHING CO.
REGINA, SASK.



All Letters containing Entry Fees should be Registered.

Checks must be payable at par Regina.

WALTON EXPOSITION

June 10 to July 10, 1901

DOMINION

REGINA, SASK., JULY

I hereby make the following Entries subject to Rules printed in the Prize List, and enclose the necessary Fees, amounting to \$.....

Date 1911

Entry Form for

[illegible]

JULY 31—AUGUST 12, 1911

for Live Stock Only

Entry No.

Prize Cheque No.

Signature of Exhibitor

Street

Post Office

[illegible]



JULY 31st

to

AUGUST 12th

1911

