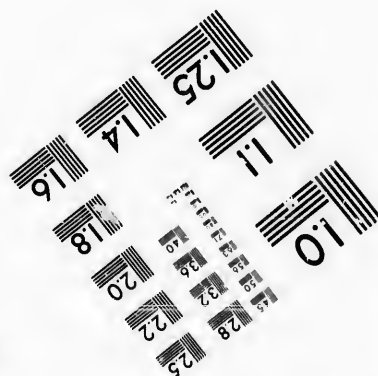
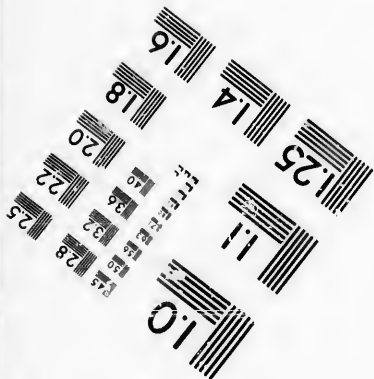
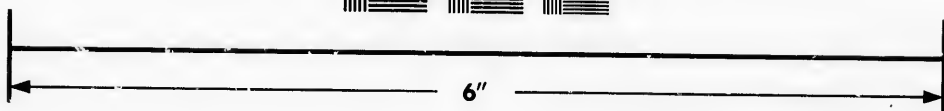
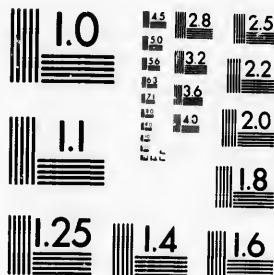


**IMAGE EVALUATION
TEST TARGET (MT-3)**



**Photographic
Sciences
Corporation**

23 WEST MAIN STREET
WEBSTER, N.Y. 14580
(716) 872-4503

0
15
28
32
36
40
22
20
18
16

**CIHM/ICMH
Microfiche
Series.**

**CIHM/ICMH
Collection de
microfiches.**



Canadian Institute for Historical Microreproductions / Institut canadien de microreproductions historiques

11
10
15
14
12

© 1986

Technical and Bibliographic Notes/Notes techniques et bibliographiques

The Institute has attempted to obtain the best original copy available for filming. Features of this copy which may be bibliographically unique, which may alter any of the images in the reproduction, or which may significantly change the usual method of filming, are checked below.

L'Institut a microfilmé le meilleur exemplaire qu'il lui a été possible de se procurer. Les détails de cet exemplaire qui sont peut-être uniques du point de vue bibliographique, qui peuvent modifier une image reproduite, ou qui peuvent exiger une modification dans la méthode normale de filmage sont indiqués ci-dessous.

- | | |
|--|---|
| <input type="checkbox"/> Coloured covers/
Couverture de couleur | <input type="checkbox"/> Coloured pages/
Pages de couleur |
| <input type="checkbox"/> Covers damaged/
Couverture endommagée | <input type="checkbox"/> Pages damaged/
Pages endommagées |
| <input type="checkbox"/> Covers restored and/or laminated/
Couverture restaurée et/ou pelliculée | <input type="checkbox"/> Pages restored and/or laminated/
Pages restaurées et/ou pelliculées |
| <input type="checkbox"/> Cover title missing/
Le titre de couverture manque | <input checked="" type="checkbox"/> Pages discoloured, stained or foxed/
Pages décolorées, tachetées ou piquées |
| <input type="checkbox"/> Coloured maps/
Cartes géographiques en couleur | <input type="checkbox"/> Pages detached/
Pages détachées |
| <input type="checkbox"/> Coloured ink (i.e. other than blue or black)/
Encre de couleur (i.e. autre que bleue ou noire) | <input checked="" type="checkbox"/> Showthrough/
Transparence |
| <input type="checkbox"/> Coloured plates and/or illustrations/
Planches et/ou illustrations en couleur | <input type="checkbox"/> Quality of print varies/
Qualité inégale de l'impression |
| <input type="checkbox"/> Bound with other material/
Relié avec d'autres documents | <input type="checkbox"/> Includes supplementary material/
Comprend du matériel supplémentaire |
| <input type="checkbox"/> Tight binding may cause shadows or distortion
along interior margin/
La reliure serrée peut causer de l'ombre ou de la
distorsion le long de la marge intérieure | <input type="checkbox"/> Only edition available/
Seule édition disponible |
| <input type="checkbox"/> Blank leaves added during restoration may
appear within the text. Whenever possible, these
have been omitted from filming/
Il se peut que certaines pages blanches ajoutées
lors d'une restauration apparaissent dans le texte,
mais, lorsque cela était possible, ces pages n'ont
pas été filmées. | <input type="checkbox"/> Pages wholly or partially obscured by errata
slips, tissues, etc., have been re-filmed to
ensure the best possible image/
Les pages totalement ou partiellement
obscurcies par un feuillet d'errata, une pelure,
etc., ont été filmées à nouveau de façon à
obtenir la meilleure image possible. |
| <input type="checkbox"/> Additional comments:/
Commentaires supplémentaires: | |

This item is filmed at the reduction ratio checked below/
Ce document est filmé au taux de réduction indiqué ci-dessous.

10X	14X	18X	22X	26X	30X
<input type="checkbox"/>	<input type="checkbox"/>	<input type="checkbox"/>	<input checked="" type="checkbox"/>	<input type="checkbox"/>	<input type="checkbox"/>
12X	16X	20X	24X	28X	32X

The copy filmed here has been reproduced thanks to the generosity of:

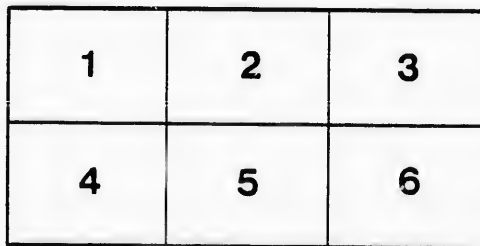
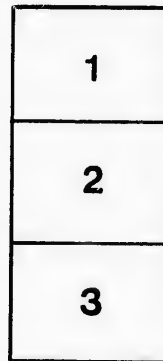
D. B. Weldon Library
University of Western Ontario
(Regional History Room)

The images appearing here are the best quality possible considering the condition and legibility of the original copy and in keeping with the filming contract specifications.

Original copies in printed paper covers are filmed beginning with the front cover and ending on the last page with a printed or illustrated impression, or the back cover when appropriate. All other original copies are filmed beginning on the first page with a printed or illustrated impression, and ending on the last page with a printed or illustrated impression.

The last recorded frame on each microfiche shell contain the symbol \rightarrow (meaning "CONTINUED"), or the symbol ∇ (meaning "END"), whichever applies.

Maps, plates, charts, etc., may be filmed at different reduction ratios. Those too large to be entirely included in one exposure are filmed beginning in the upper left hand corner, left to right and top to bottom, as many frames as required. The following diagrams illustrate the method:



L'exemplaire filmé fut reproduit grâce à la générosité de:

D. B. Weldon Library
University of Western Ontario
(Regional History Room)

Les images suivantes ont été reproduites avec le plus grand soin, compte tenu de la condition et de la netteté de l'exemplaire filmé, et en conformité avec les conditions du contrat de filmage.

Les exemplaires originaux dont la couverture en papier est imprimée sont filmés en commençant par le premier plat et en terminant soit par la dernière page qui comporte une empreinte d'impression ou d'illustration, soit par le second plat, selon le cas. Tous les autres exemplaires originaux sont filmés en commençant par la première page qui comporte une empreinte d'impression ou d'illustration et en terminant par la dernière page qui comporte une telle empreinte.

Un des symboles suivants apparaîtra sur la dernière image de chaque microfiche, selon le cas: le symbole \rightarrow signifie "A SUIVRE", le symbole ∇ signifie "FIN".

Les cartes, planches, tableaux, etc., peuvent être filmés à des taux de réduction différents. Lorsque le document est trop grand pour être reproduit en un seul cliché, il est filmé à partir de l'angle supérieur gauche, de gauche à droite, et de haut en bas, en prenant le nombre d'images nécessaire. Les diagrammes suivants illustrent la méthode.

re
détails
es du
modifier
er une
image

es

errata
to

pelure,
on à

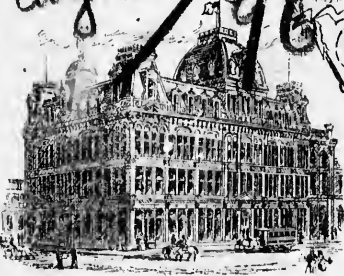


32X



*Ward & Decker
A Room on the Bank*

Aug. 20



**GRAND
OPERA HOUSE**
C. J. WHITNEY,
LESSEE.
A. E. ROOTE
MANAGER.



LONDON, ONT.



x SMITH BROS., x

TELEPHONE
538.

LEADING PLUMBER

376 RICHMOND STREET., - LONDON, O

(London Printing and Litho. Co.)



The... Tecumseh

LONDON, ONT.

FIRST-CLASS IN ALL
APPOINTMENTS.

SPECIAL RATES FOR
COMPANIES.

CHAS. W. DAVIS,
Proprietor.

READ AND REFLECT.

DOORS open for matinees at 2 p. m. ; curtain rises at 2.30 p. m.
Evenings.—Doors open at 7.30, and curtain rises at 8.15 p. m. sharp.

Tickets can be reserved two days in advance without extra charge.

Office open from 9 a. m. to 9 p. m.

Seats can be secured by mail, telegraph or telephone. Telephone 732.

Seats ordered by Telephone or in Person, and not called for by 7 30 o'clock on the night of performance, will then be sold to avoid loss to the Theatre.

Physicians are requested to register at the Box Office, leaving seat number, as this will enable Ushers to find them, if called for, without disturbing the audience.

Children in arms not admitted to evening performances. Children three years old or over, full price.

Patrons will confer a favor by reporting to the management any incivility or inattention on the part of the employees, and annoyances of any nature.

If the individual members of an audience would stop to think for just an instant, they would undoubtedly appreciate the fact that the habit of rising from their seat and leaving the theatre before the curtain falls, is a most annoying one, and one that should be stopped. We therefore beg our audiences to kindly remain in their seats until the close of the performance.

Electric Cars will be waiting on Richmond St. for all parts of the City, at the close each performance.

Carriages can be ordered at the Box Office or of the Chief Usher.

For all lost articles, apply at Box Office.

It is strange, but there is a class of people that seem to take an intense delight in bespattering the floor with tobacco juice, and in being boisterous and using profane language. These people should know at once that the courts authorize their immediate expulsion, should the management see fit to exercise its rights.

THE

PROGRAMME

The primary idea of this Programme is, of course, to enlighten the audience as to the personnel of the artists taking part in the performances, incidentally to serve as a guide to the plot of the piece, and generally to give such information as will tend to the enjoyment of the auditor.

Reading matter of a miscellaneous nature is, however, liberally supplied, that may be perused with interest and advantage. Quips and Quirks give zest to the solid matter, as sauces do to meats, but there is a fund of information in the advertisements that may be seriously considered with profit.

The publisher is prepared to attend to all business in the way of general and special advertising.

Respectfully,

A. E. ROOTE,

Advertising Agent.

GRAND TRUNK RAILWAY SYSTEM.

FOR ALL POINTS

NORTH or SOUTH, EAST or WEST,

Take the **Great Double-Track Highway**

Baggage passed United States Customs here, and checked through to destination.

Sleeping car accommodation secured in advance.

OFFICES: "CLOCK" COR. RICHMOND and DUNDAS STS. & C.T.R. DEPOT

PROSPECTIVE HOUSEKEEPERS

A serious problem for prospective housekeepers is the great original outlay necessary for the purchase of appropriate furniture and carpets. We can be of service to all such. They'll be surprised to learn upon how small an investment they can begin, while veteran housekeepers will be amazed by some of our offerings. For INSTANCE:

*A FIVE-ROOMED HOUSE FURNISHED
COMPLETE FOR \$100,
AND DO IT NICELY IN OAK WOOD—
FINE FINISHED.*

John Ferguson & Sons

174 to 180 KING ST., LONDON.

SMOKE

McKenna's

VIRGINIA & CIGAR

THE BEST 5c. CIGAR IN THE
WORLD.

225 Dundas Street.

GRAND OPERA HOUSE

LONDON, ONT.

C. J. WHITNEY, Lessee.

A. E. ROOTE, Manager.

PROGRAMME

THURSDAY, AUGUST 20TH.

THE POPULAR ENTERTAINERS

WARD & VOKES

IN THE FARICAL SUCCESS

"A RUN ON THE BANK"

(BY CHAS. E. BLANEY.)

TOUR DIRECTED BY E. D. STAIR.

PROGRAMME—Continued on Page 7.

BRADFORD & HODGINS, TELEPHONE 546.

... Confectioners and Carterers,

—194 DUNDAS STREET.



WE respectfully announce that we have remodelled and refitted our store throughout, making it one of the finest in the Province. Our LUNCH and REFRESHMENT PARLORS are spacious, light, airy and fully equipped, and we are now prepared to provide LUNCHES in a manner that will be appreciated by the general public. Our facilities for supplying ICE CREAM and SODA WATER beverages are of the best. We respectfully solicit your patronage. BRADFORD & HODGINS.

GIVE US A CALL AFTER THE CLOSE OF THE PERFORMANCE.

6

Hub Restaurant

STEVENS & NICOL.

203 & 205 $\frac{1}{2}$ DUNDAS ST.,

..... LONDON, ONTARIO.

IMPORTED and DOMESTIC WINES,
LIQUORS and CIGARS.

Private Dining Parlors.
Cafe Open Until 12 o'clock.

JOSEPH DAMBRA,

Merchant
Tailor...

New Goods.
Latest Styles.

262 $\frac{1}{2}$ DUNDAS
STREET,

London, Ontario.

WE HAVE JUST OPENED

3 CASES

NEW FALL HATS

GRAHAM BROS.,

159 DUNDAS ST.

PROGRAMME—Continued from Page 5.

CAST OF CHARACTERS.

LORD PERCY SOAKUP.....	} Gentlemen of Unlimited Nerve and Experience	"HAPPY" WARD
BARON HAROLD DECANter.....		HARRY VOKES
Bowlegs, crooked by nature.....		Chas. Guyer
General Note Shaver.....		Tony Williams
August Biewer, sheriff.....		Chas. A. Mason
Coonie Acker, a counterfeiter.....		Joe Kelley
Con Mann, a gentleman of leisure.....		
Eagle Eye, a blind man.....		
Adam Shame, a depositor.....		
Clubs R. Trumps, a policeman.....		T. Wilmot Eckert
Lager Hops, a brewer.....		
Ready Money, a bank runner.....		
His Most, a dynamiter.....		Gus Mechan
Barley Corn, a rustic.....		
Billy Booze, a bar fly.....		Cyrus Riddell
Makin Noise, agitator.....		W. B. Brock
Nera Mann, a female book agent.....		Gilbert Learock
Sassy Moll, a tough girl.....		Margaret Daly-Vokes
Hasty Writer, a private secretary.....		Emma Francis
Estelle Shaver.....	} The banker's daughters	Martha Franklyn
Belle Shaver.....		Alma Desnond
Minnie Appolis.....	} Friends of the family,	Sadie Whitcomb
Carrie Romance.....		Adelaide Prucilla
Grace Church.....		Nellie Daly
Miss Fitt.....		Hattie Bernard
Belle Ringer.....		Lotta Miranda
Miss Fire.....		Grace Archer
Barbara Shaver.....		Belle Varney
Mena Moe.....		

Depositors, Anarchists, Bums and Others.

PROGRAMME—Continued on Page 9.

THERE ARE FLOWERS AND FLOWERS AND FLOWERS, BUT

GAMMAGE'S FLOWERS

ARE

THE FLOWERS,

When you want something better than you can get anywhere else.

J. GAMMAGE & SONS, 213 DUNDAS ST.



8.

STRONG'S DRUG STORE.

FOR

Choice Perfumes

AND ALL TOILET ARTICLES.

An Authority

on birds, to explain little difficulties—that's what users of COTTAM'S SEED enjoy. Directions on each packet embody the best professional practice; and a stamp for reply will bring you advice by return mail.

BE SURE "BART. COTTAM & CO." is on each label, and patent "Bird Bread," patent Holder and Beak Sharpener inside. Sold everywhere, 10c. Read Cottam's "Book on Birds,"—by mail, 25c.
[1]

—THE—
London Printing
AND
Lithographing
Company
(Limited)

PRINTERS,
LITHOGRAPHERS,
DESIGNERS and
ENGRAVERS.....



FREE PRESS BUILDING } London, Ont.
Richmond Street, }

First-Class Work! Right Prices!

After the Opera

....CALL IN AND SEE....

JOE NOLAN,

Where you can get all the leading brands of

**CIGARS, CIGARETTES
AND TOBACCOS.**

**OPERA CIGAR STORE: MASONIC TEMPLE,
RICHMOND ST.**

When you go home
after the Opera



AND FEEL TIRED,
A CUP OF.....

Darjeeling Tea

Sold by....

**Fitzgerald,
Seandrett & Co.**

IS THE BEST STIMULANT
YOU CAN TAKE.

IT IS PERFECTLY PURE.

PROGRAMME—Continued from Page 7.

SYNOPSIS OF INCIDENTS.

- ACT I.—Home of General Note Shaver, in the suburbs.
ACT II.—The Percy and Harold Bank.
ACT III.—Parlor off Ballroom, in the Palace Hotel, San Francisco.

NOTE.—The safe used in the second Act of the Play was furnished by the Herring-Hall Marvin Safe Co.

MUSICAL INTERPOLATIONS.

ACT I.—"Mother Nature's Laughing Eyes," Ladies. Conversation Dance, Ward, Vokes and Margaret Daly-Vokes. Original Specialty, by Kelley and Mason. The sweet-voiced Baritone, Gus Meehan. Original Specialty, Chas. Guyer, assisted by Misses Learock, Berg, Franklyn, Desmond, Whitcomb, Prucilla, Bernard, Archer, Varney, and Emma Francis. Solo Dance, Nellie Daly. Song, "Coming Candidates," Kelley, Mason, Meehan, Eckert and Williams. Finale, Amateur Circus (original), Company.

ACT II.—Song and Dance, Emma Francis and Chas. Guyer. Song, "The Sporty Girls," Ladies.

ACT III.—WARD AND VOKES FAMOUS SPECIALTY, "Percy and Harold". The great operatic duettists, T. W. Eckert and Miss Emma Berg in their refined lyric sketch, "Master and Pupil". Finale, Ward, Vokes and Company.

Incidental Music especially composed and arranged by Mr. Chas. Zimmerman.

PROGRAMME—Continued on Page 11.

A. SCREATON & CO.

Fine Merchant Tailoring.

THE FINEST ASSORTED STOCK IN THE CITY OF IMPORTED

Suitings, Overcoatings & Trouserings.

Let us make your clothes, and possess an amount of comfort
and satisfaction that will be a surprise to you.

134 DUNDAS ST.

A. SCREATON & CO.

GO TO

JOHN GARVEY'S,

156 DUNDAS STREET,

FOR CHOICE

Liquors and . . . Champagnes.

R. MITCHELTREE

—DEALER IN ALL KINDS OF—

FRESH and SALT MEATS

BOLOGNA, FRESH PORK, SAUSAGE,
Head Cheese, Black Pudding, Lard, Tripe, Etc.

153 KING STREET, A. FAR
RICHMOND.

ORDERS PROMPTLY ATTENDED TO.

TELEPHONE 862.



Grigg House

LONDON, ONT.

THE LEADING COMMERCIAL HOUSE
OF THE WEST.

SPECIAL RATES TO
THEATRICAL PEOPLE.

E. HORSMAN;
PROPRIETOR.

PROGRAMME—Continued from Page 9.

FOR E. D. STAIR.

Max Zoellner,	Manager.
Chas. R. Sturges,	Business Manager.
Chas. Zimmerman,	Musical Director.
T. W. Eckert,	Stage Manager.
Cyrus Riddell,	Transportation Manager.

THE GERHARD HEINTZMAN PIANO

—USED IN THIS OPERA HOUSE WAS SUPPLIED BY—

Warerooms: 229 Dundas St., London. **W. McPHILLIPS.**

GET
YOUR

MARRIAGE LICENSES,

WEDDING RINGS,

AND **OPERA GLASSES** FROM

**402 RICHMOND
STREET.**

THOS. GILLEAN,

Jeweler and Optician.

PROGRAMME—Concluded.

NEXT ATTRACTION 

— **COMING.....**

THE BEST LIST OF ATTRACTIONS

EVER BOOKED FOR THE GRAND OPERA HOUSE.

Look out for the Attractions during the Fair

JUST TELL THEM THAT YOU SAW ME AT THE
SAME OLD STAND,

The Office Restaurant, 378 RICHMOND ST.,
Opp. Masonic Temple.

.....
A PLEASANT SMILE TO ALL!
.....

BILLIE & DAVE.

←=→ D. SARE, Prop.

NS

air

Speaking about Tragedy!

There have been several narrow escapes in London recently.

A Broken Plank

was the cause. You possibly have a poor stretch of walk in front of your premises. Our Telephone No. is 653.

And Lumber is Cheap.

Before you place an order for Inside Finishing, remember that we have an elegantly equipped factory and a great reputation on that class of work.

GEO. H. BELTON
LUMBER YARD,
YORK STREET.

JAMIE'S OFFER.

Jamie is a bright-eyed boy who belongs to a family of seven children. He has an uncle living in the country twenty miles from his city home, and he loves to visit him.

Although he is only six, he shows great fondness for animals, and during his last visit he was much interested in a little calf there, and kept teasing his uncle to sell it to him to take home.

Finally the uncle asked: "What would you pay me for the calf?"

Jamie replied: "I haven't much money, but I could trade the baby for the calf, for we have a baby at our house most every year."

BEHIND THE TIMES.

Colonel— "Yes, that silver plate was handed down to me by my great grandmother, dear soul, who has been in heaven these sixty years."

Mrs. Parvenoo— "Bless me! How awfully behind the times they are up there, aren't they?"

A PLACE TO STAY IN.

"Kind sir," said the well-dressed stranger to a resident of the city, "is there a home for the friendless in this place?"

"Yes, there is; but you don't look as though you were forced to seek such a refuge."

"You must not judge by appearances, sir. I am a baseball umpire."

AN EFFECTIVE ONE; TOO.

Miss Kilduff—"How did Blanche manage to get a husband?"

Miss Kittish—"She utilized a matrimonial agency."

Miss Kilduff—"She surely didn't! What matrimonial agency did she utilize?"

Miss Kittish—"A hammock."

ECONOMICAL.

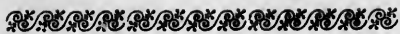
Bingo—"I shouldn't think you could afford to let your wife go to so many matinees."

Kingley—"Why not? It keeps her away from the dry-goods stores at least two hours and a-half."

Patrons of this Theatre will confer a favor by reporting any discourtesy on the part of employees, to A. E. ROOTE, Manager.

Parties finding lost articles in any portion of this Theatre will please leave them at the Ticket Office.

Parties losing any articles in this Theatre will please inquire at the Box Office.



When You Have

Lithographing,

Bill Posting,

Distributing,

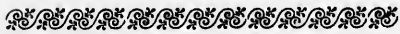
Country Work,

or Advertising

*Of any kind to do,
Don't forget the*

LONDON 

...BILL POSTING
AGENCY.



ngs to
uncle
m his

great
visit
there,
im to

would
oney,
or we
r."

was
other,
sixty

awful-
aren't

ranger
me for

ok as
fuge."
sir. I

anage
monial

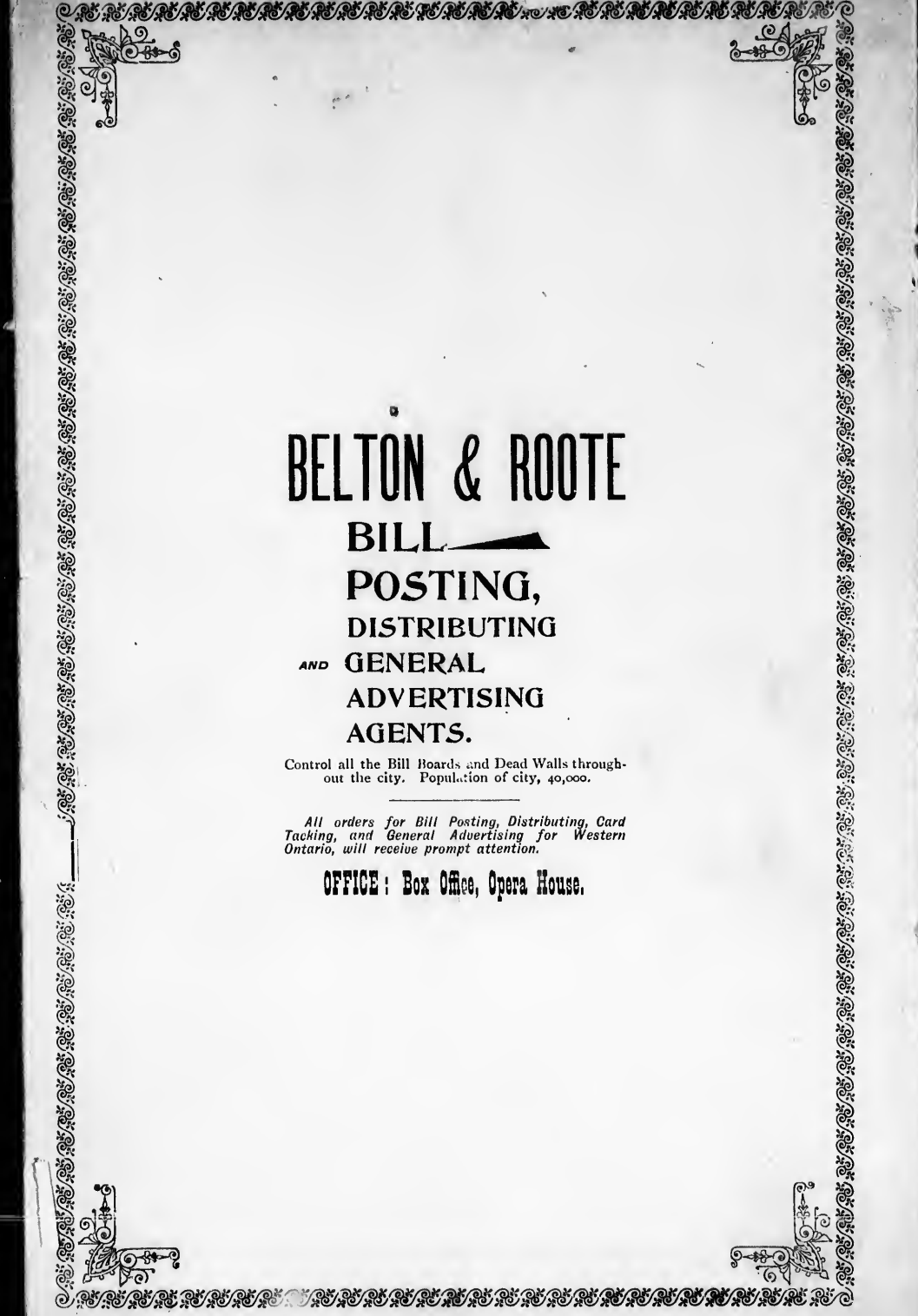
What


afford
away
hours

favor
art of

ortion
at the

eatre



BELTON & ROOTE
BILL 
POSTING,
DISTRIBUTING
AND GENERAL
ADVERTISING
AGENTS.

Control all the Bill Boards and Dead Walls throughout the city. Population of city, 40,000.

All orders for Bill Posting, Distributing, Card Tacking, and General Advertising for Western Ontario, will receive prompt attention.

OFFICE: Box Office, Opera House.

