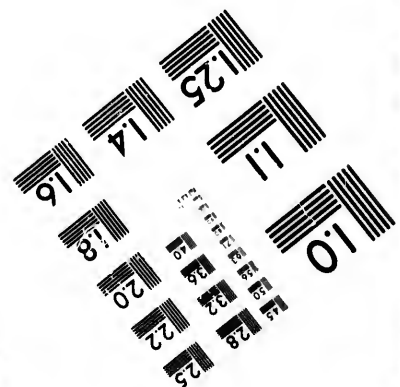
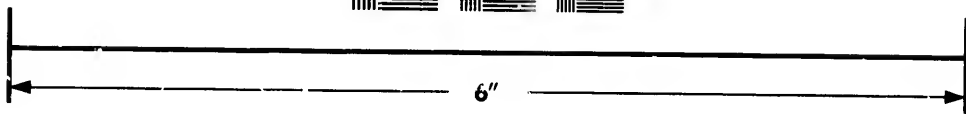
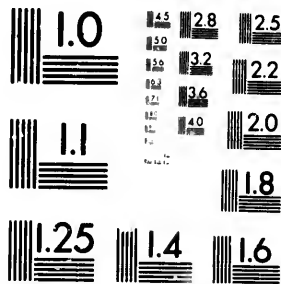


**IMAGE EVALUATION
TEST TARGET (MT-3)**



**Photographic
Sciences
Corporation**

23 WEST MAIN STREET
WEBSTER, N.Y. 14580
(716) 872-4503

**CIHM/ICMH
Microfiche
Series.**

**CIHM/ICMH
Collection de
microfiches.**



Canadian Institute for Historical Microreproductions / Institut canadien de microreproductions historiques

© 1981

Technical and Bibliographic Notes/Notes techniques et bibliographiques

The Institute has attempted to obtain the best original copy available for filming. Features of this copy which may be bibliographically unique, which may alter any of the images in the reproduction, or which may significantly change the usual method of filming, are checked below.

L'Institut a microfilmé le meilleur exemplaire qu'il lui a été possible de se procurer. Les détails de cet exemplaire qui sont peut-être uniques du point de vue bibliographique, qui peuvent modifier une image reproduite, ou qui peuvent exiger une modification dans la méthode normale de filmage sont indiqués ci-dessous.

- | | |
|--|--|
| <input checked="" type="checkbox"/> Coloured covers/ Couverture de couleur | <input type="checkbox"/> Coloured pages/ Pages de couleur |
| <input checked="" type="checkbox"/> Covers damaged/ Couverture endommagée | <input type="checkbox"/> Pages damaged/ Pages endommagées |
| <input type="checkbox"/> Covers restored and/or laminated/ Couverture restaurée et/ou pelliculée | <input type="checkbox"/> Pages restored and/or laminated/ Pages restaurées et/ou pelliculées |
| <input type="checkbox"/> Cover title missing/ Le titre de couverture manque | <input type="checkbox"/> Pages discoloured, stained or foxed/ Pages décolorées, tachetées ou piquées |
| <input type="checkbox"/> Coloured maps/ Cartes géographiques en couleur | <input checked="" type="checkbox"/> Pages detached/ Pages détachées |
| <input type="checkbox"/> Coloured ink (i.e. other than blue or black)/ Encre de couleur (i.e. autre que bleue ou noire) | <input type="checkbox"/> Showthrough/ Transparence |
| <input type="checkbox"/> Coloured plates and/or illustrations/ Planches et/ou illustrations en couleur | <input type="checkbox"/> Quality of print varies/ Qualité inégale de l'impression |
| <input type="checkbox"/> Bound with other material/ Relié avec d'autres documents | <input type="checkbox"/> Includes supplementary material/ Comprend du matériel supplémentaire |
| <input type="checkbox"/> Tight binding may cause shadows or distortion along interior margin/ La reliure serrée peut causer de l'ombre ou de la distortion le long de la marge intérieure | <input type="checkbox"/> Only edition available/ Seule édition disponible |
| <input type="checkbox"/> Blank leaves added during restoration may appear within the text. Whenever possible, these have been omitted from filming/ Il se peut que certaines pages blanches ajoutées lors d'une restauration apparaissent dans le texte, mais, lorsque cela était possible, ces pages n'ont pas été filmées. | <input type="checkbox"/> Pages wholly or partially obscured by errata slips, tissues, etc., have been refilmed to ensure the best possible image/ Les pages totalement ou partiellement obscurcies par un feuillet d'errata, une pelure, etc., ont été filmées à nouveau de façon à obtenir la meilleure image possible. |
| <input type="checkbox"/> Additional comments:/ Commentaires supplémentaires: | |

This item is filmed at the reduction ratio checked below/
Ce document est filmé au taux de réduction indiqué ci-dessous.

| | | | | | |
|--------------------------|--------------------------|--------------------------|--------------------------|-------------------------------------|--------------------------|
| 10X | 14X | 18X | 22X | 26X | 30X |
| <input type="checkbox"/> | <input type="checkbox"/> | <input type="checkbox"/> | <input type="checkbox"/> | <input checked="" type="checkbox"/> | <input type="checkbox"/> |
| 12X | 16X | 20X | 24X | 28X | 32X |

The copy filmed here has been reproduced thanks to the generosity of:

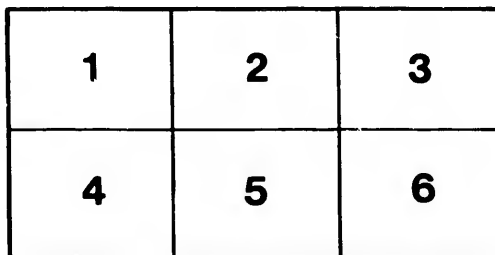
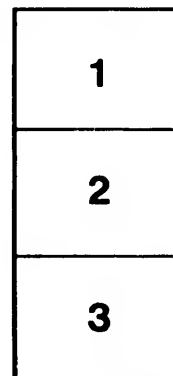
Library of Congress
Photoduplication Service

The images appearing here are the best quality possible considering the condition and legibility of the original copy and in keeping with the filming contract specifications.

Original copies in printed paper covers are filmed beginning with the front cover and ending on the last page with a printed or illustrated impression, or the back cover when appropriate. All other original copies are filmed beginning on the first page with a printed or illustrated impression, and ending on the last page with a printed or illustrated impression.

The last recorded frame on each microfiche shall contain the symbol \rightarrow (meaning "CONTINUED"), or the symbol ∇ (meaning "END"), whichever applies.

Maps, plates, charts, etc., may be filmed at different reduction ratios. Those too large to be entirely included in one exposure are filmed beginning in the upper left hand corner, left to right and top to bottom, as many frames as required. The following diagrams illustrate the method:



L'exemplaire filmé fut reproduit grâce à la générosité de:

Library of Congress
Photoduplication Service

Les images suivantes ont été reproduites avec le plus grand soin, compte tenu de la condition et de la netteté de l'exemplaire filmé, et en conformité avec les conditions du contrat de filmage.

Les exemplaires originaux dont la couverture en papier est imprimée sont filmés en commençant par le premier plat et en terminant soit par la dernière page qui comporte une empreinte d'impression ou d'illustration, soit par le second plat, selon le cas. Tous les autres exemplaires originaux sont filmés en commençant par la première page qui comporte une empreinte d'impression ou d'illustration et en terminant par la dernière page qui comporte une telle empreinte.

Un des symboles suivants apparaîtra sur la dernière image de chaque microfiche, selon le cas: le symbole \rightarrow signifie "A SUIVRE", le symbole ∇ signifie "FIN".

Les cartes, planches, tableaux, etc., peuvent être filmés à des taux de réduction différents. Lorsque le document est trop grand pour être reproduit en un seul cliché, il est filmé à partir de l'angle supérieur gauche, de gauche à droite, et de haut en bas, en prenant le nombre d'images nécessaire. Les diagrammes suivants illustrent la méthode.

ils
u
lifier
ne
age

ate

olure,
à

32X



Cape Breton

ILLUSTRATED

PART IV





CAPE BRETON

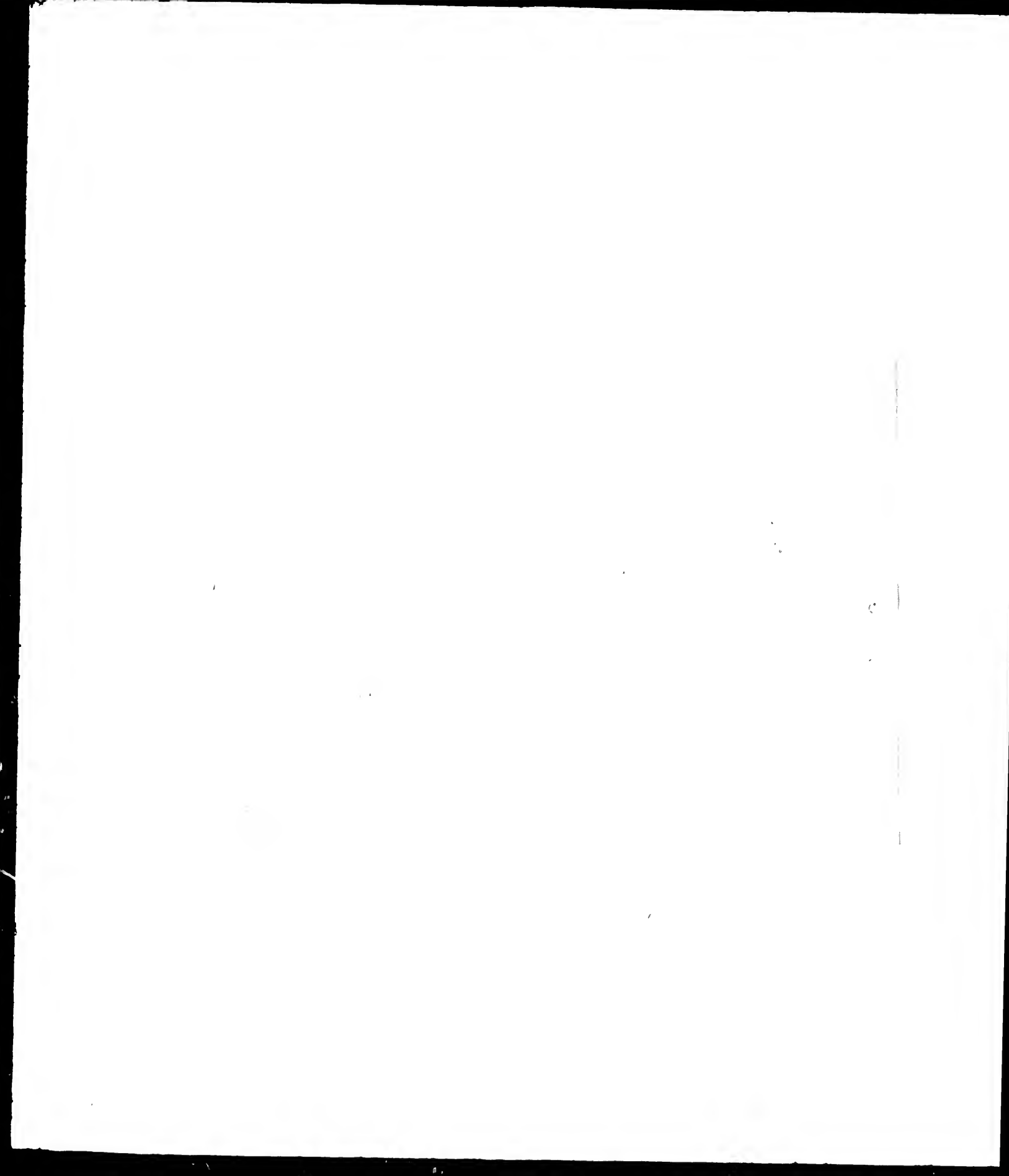
• ILLUSTRATED •

PART IV.



Copyrighted by Jas A Stubbert, 1891.

THE ALBERTYPE CO., N. Y.



CAPE BRETON.



HIS selection of views in Cape Breton is intended to place in the hands of the public a few illustrations of places of historic interest in that island. The scenery of Cape Breton, Margaree and the Bras D'Or Lake is unrivalled in the Maritime provinces. Louisbourg and Sydney are both towns of historic interest. The former is the scene of the great struggles which resulted in the permanent occupation of the island by the British; while the latter became the centre of English authority, being the centre of a separate military government from 1784 to 1819.

The citadel of Louisbourg was a work after the plan of Vauban. It was magnificent in extent and design but badly built and poorly armed. The outlines of this fortification can still be distinctly traced. Four bomb-proof casements in a state of partial preservation still mark the site of the "King's Bastion," which defended the citadel on the north; while the "Queen's Bastion" occupied the opposite angle, where the remains of three other casements are yet to be seen. This view is in the direction of the light-house and the English Harbour, towards the East.

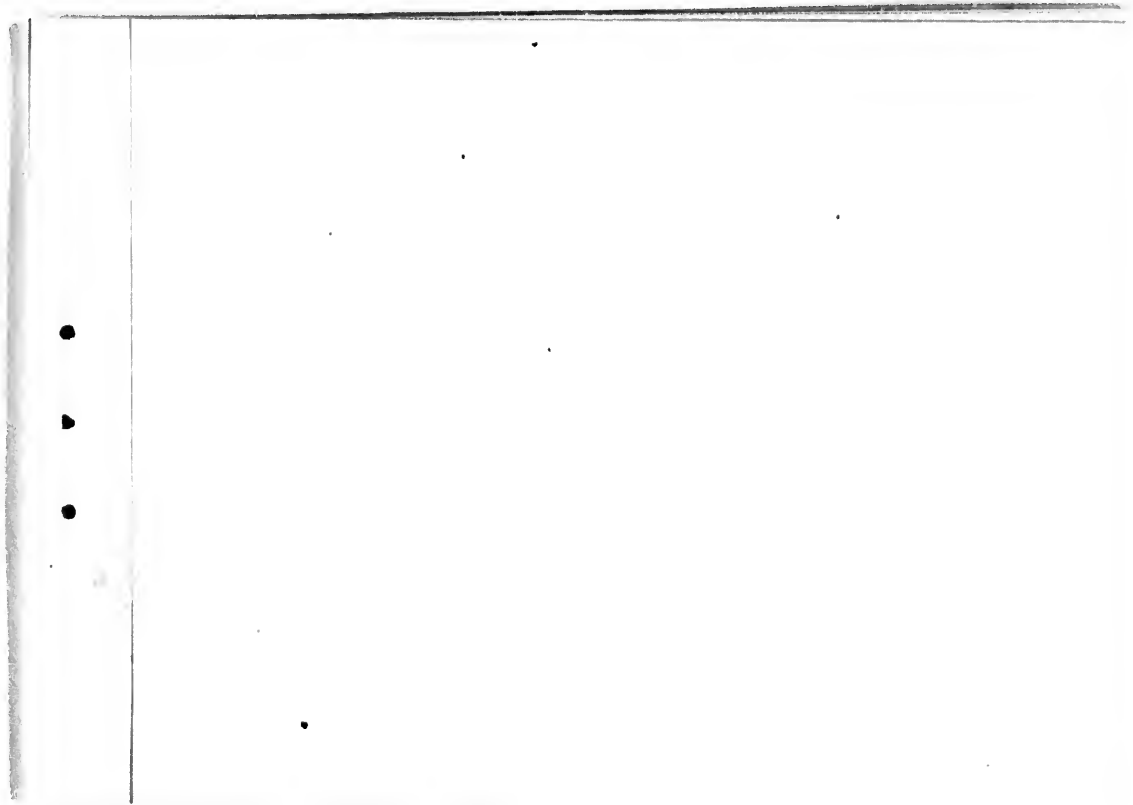
Sydney is the county town of Cape Breton County, and is commercially the centre of the coaling region. The place has a population of about 3,000. Its harbour is one of the largest and safest in the world, and, next to Halifax, has more shipping trade than any other part in the lower provinces. A small garrison was stationed here up to the time of the Crimean War, and the harbour is still frequented by English and French war ships during the summer months. Five miles distant, and on the opposite side of the harbour, is North Sidney, formerly called the "Bar." It has grown up during the last twenty

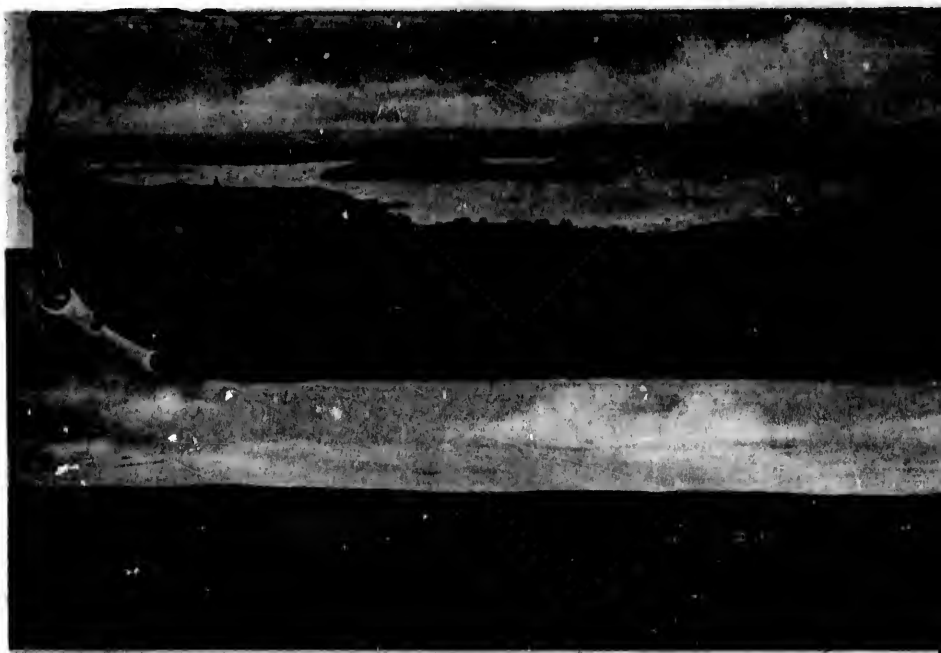
years. The General Mining Association ship their coal at this point, and the Western Union Atlantic cable lands here. This is a place of considerable enterprise, and is a port of call for ships from Europe bound to Atlantic and St. Lawrence ports.

St. Peter's Canal is about half a mile in length and has been cut for the most part out of the solid rock. It connects the Atlantic with the Bras D'Or Lake towards the South West, and thus provides a water route from Sidney to the Strait of Canso, through the interior of the island. The scenery all along this route is very fine. "Grand Narrows" is a narrow and deep passage forming the eastern inlet to Bras D'Or Lake. The bridge seen in the illustration is 1,750 feet in length, and the depth of the water is 175 feet. A hotel has been built here for the accommodation of travelers and tourists. The Grand Narrows are about half-way between Sidney and the Strait of Canso.

The Uisge Ban Falls, 125 feet in height, are in the midst of wild and rugged scenery. The name signifies "White Water Falls." The scenery of Ingonish is very grand. The inner harbor, surrounded by bold and wooded heights, is very much admired. Near this place is Cape Enfermé, 2,100 feet in height, the highest headland in the Maritime Provinces. Baddeck is the county town of Victoria County. The scenery in this neighborhood is varied and beautiful, and attracts visitors during the summer months. The eminence on the right in the view entitled "Fishing at Margaree" is "Cape Clear," the highest point of land in the Lower Provinces.

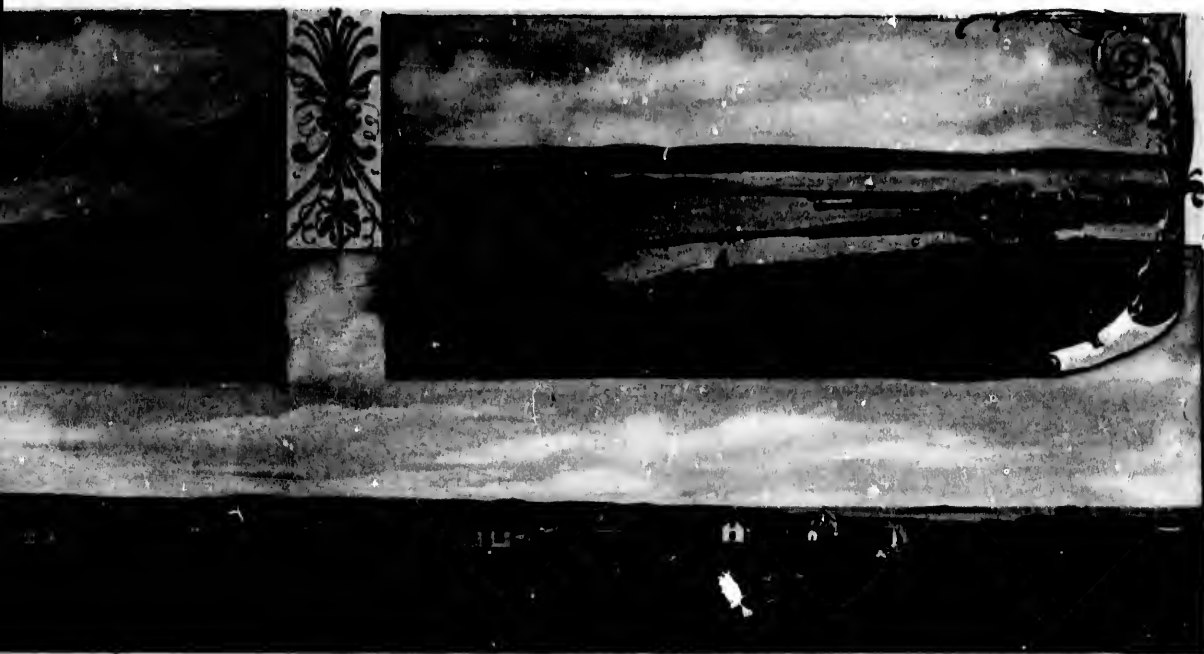
This little volume is the fourth in number of a series entitled "Cape Breton Illustrated." The first (a large volume) designated "Louisbourg, Historic, Descriptive and Picturesque," is devoted to the history of this French stronghold. Both sieges will be described in detail. The origin and result of the conflict between the Puritans, the French and the British in North America will be considered. The book will be finely illustrated, and it is hoped that the public may find it both tasteful and instructive.





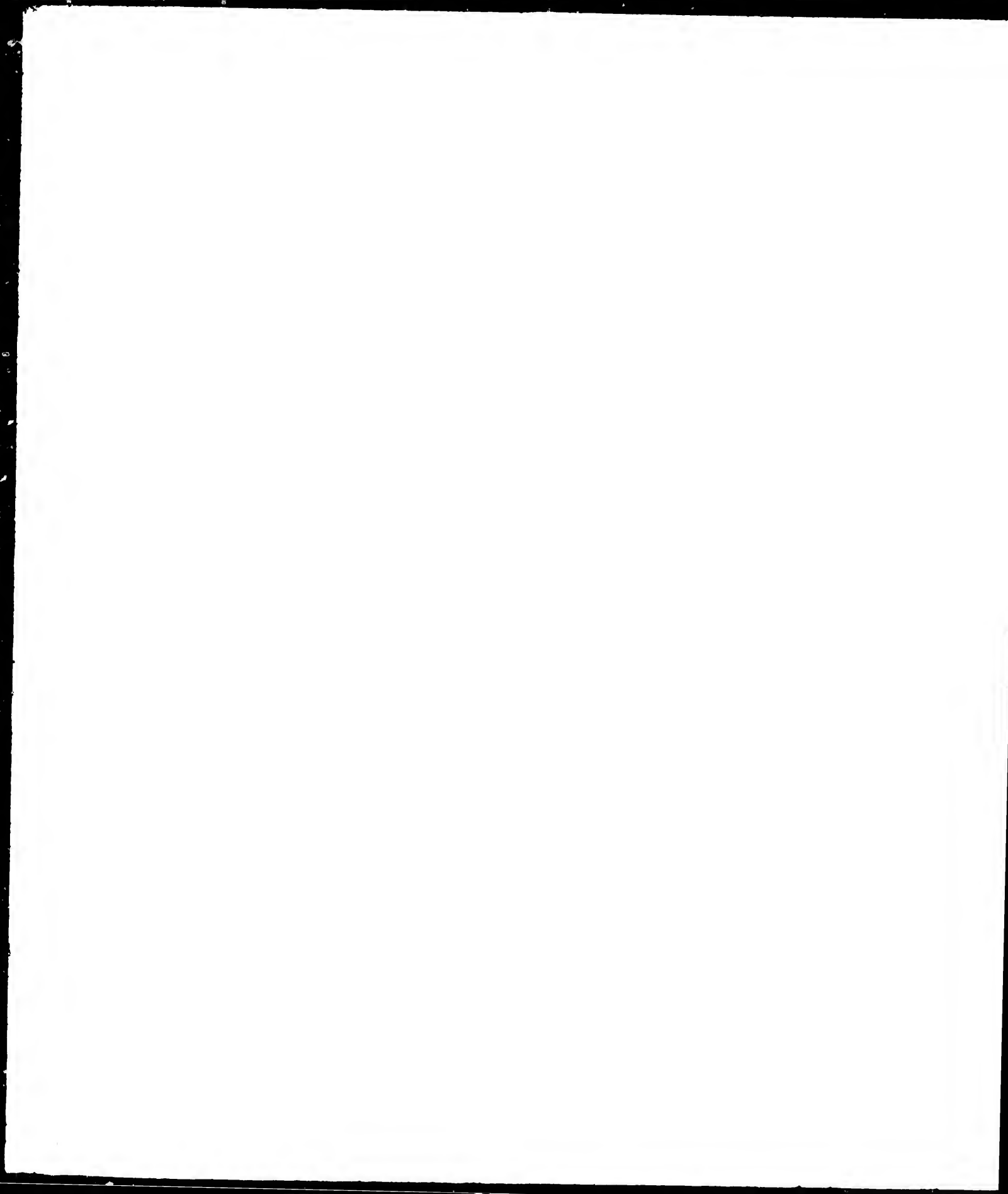
WHYCOMAGH BAY.

LOUISBOURG.



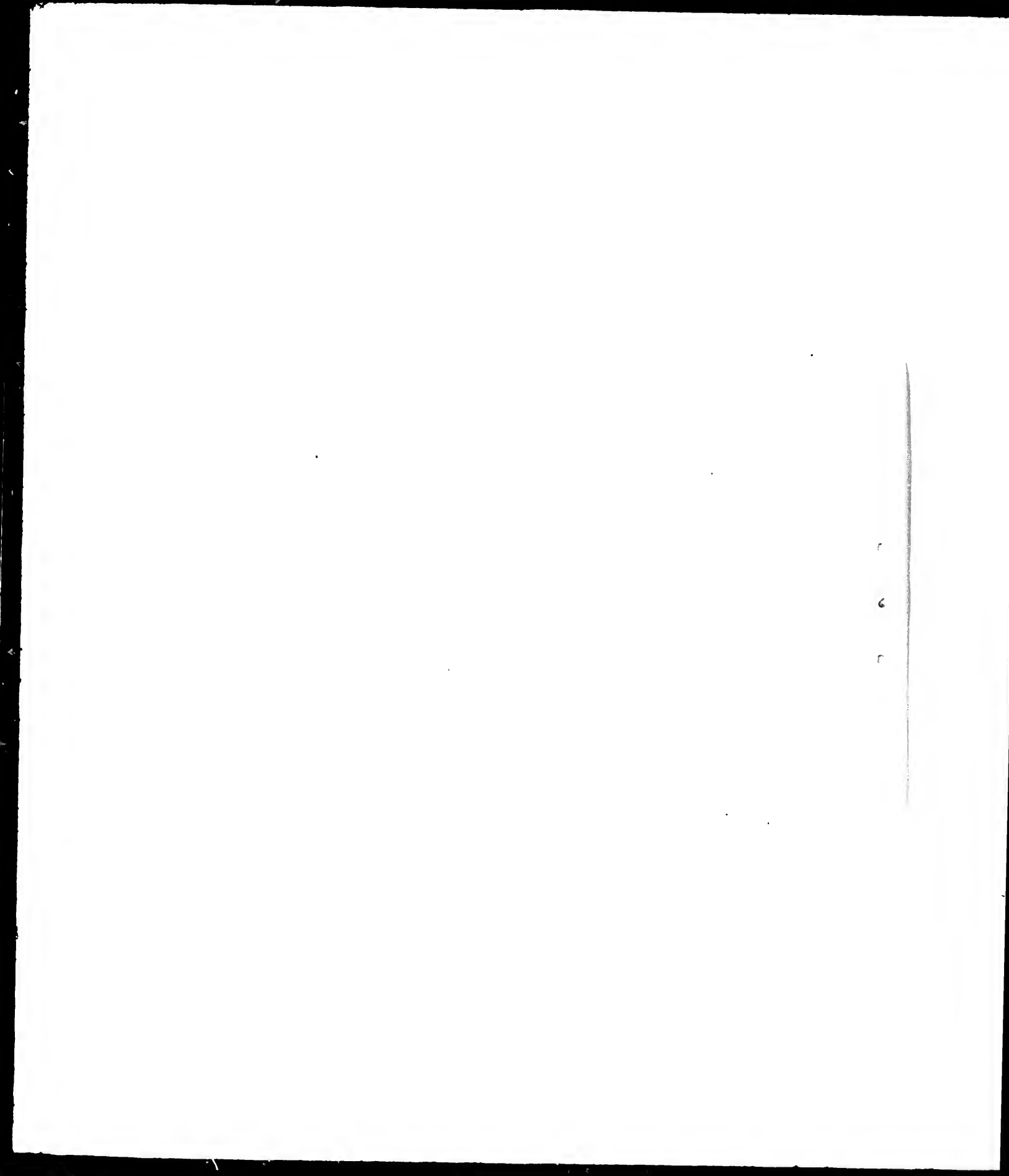
LOUISBOURG, FROM THE CITADEL.

GRAND NARROWS.





SYDNEY.





NORTH SYDNEY.

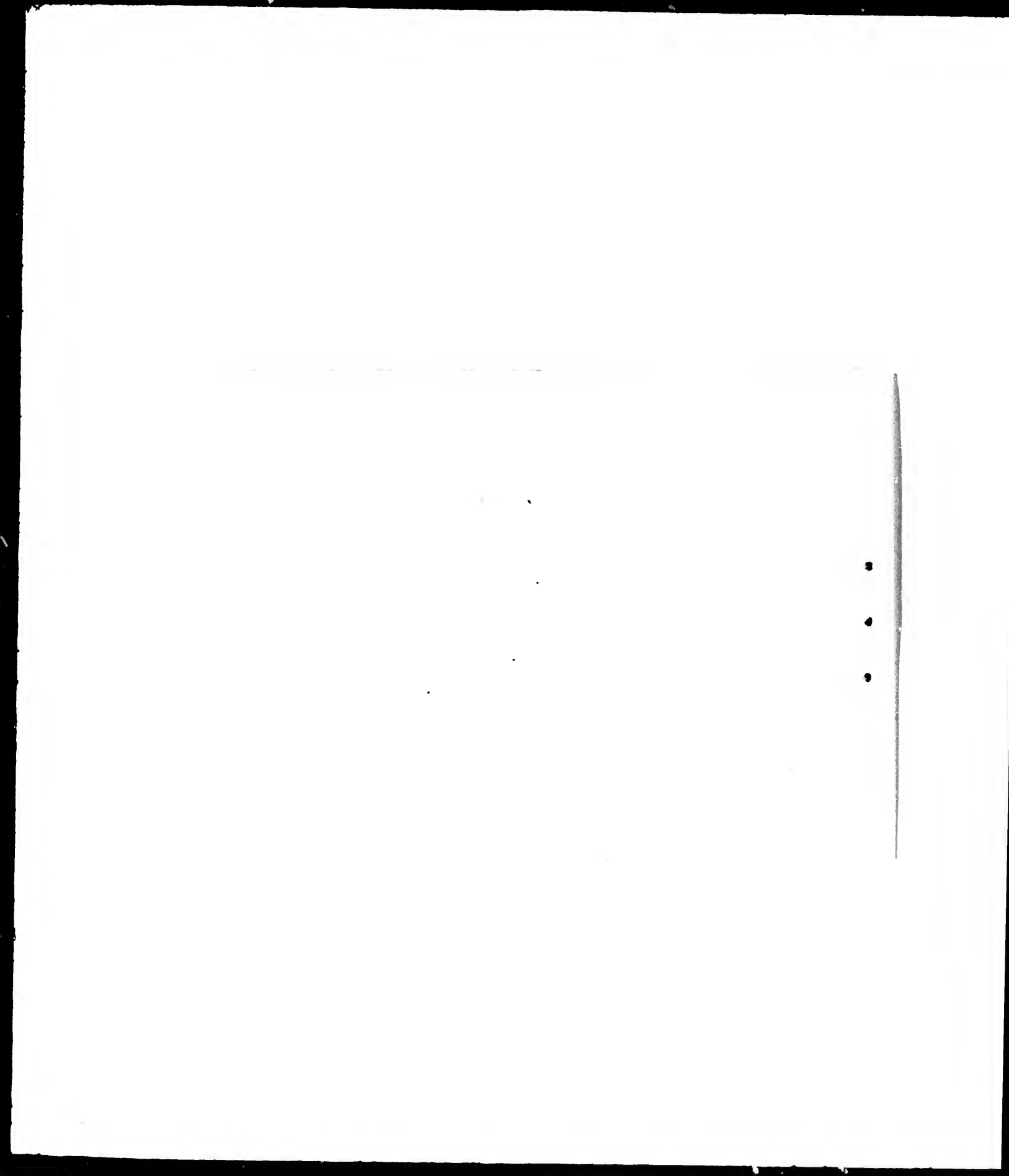


SYDNEY FROM THE CEMETERY.

R
O
O



SUGAR LOAF, MARGAREE.





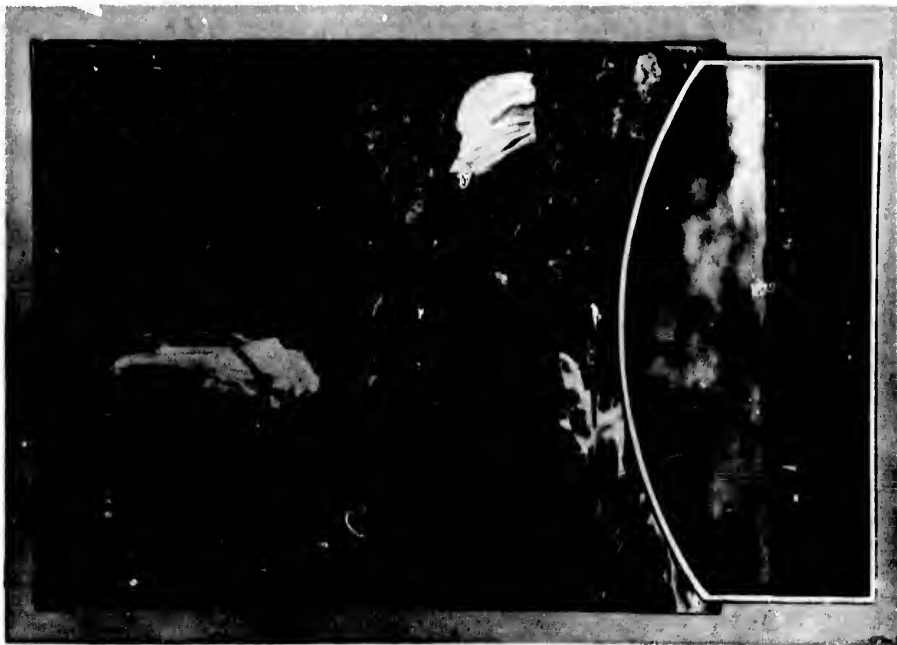
ON THE MARGAREE RIVER.

•
•
•

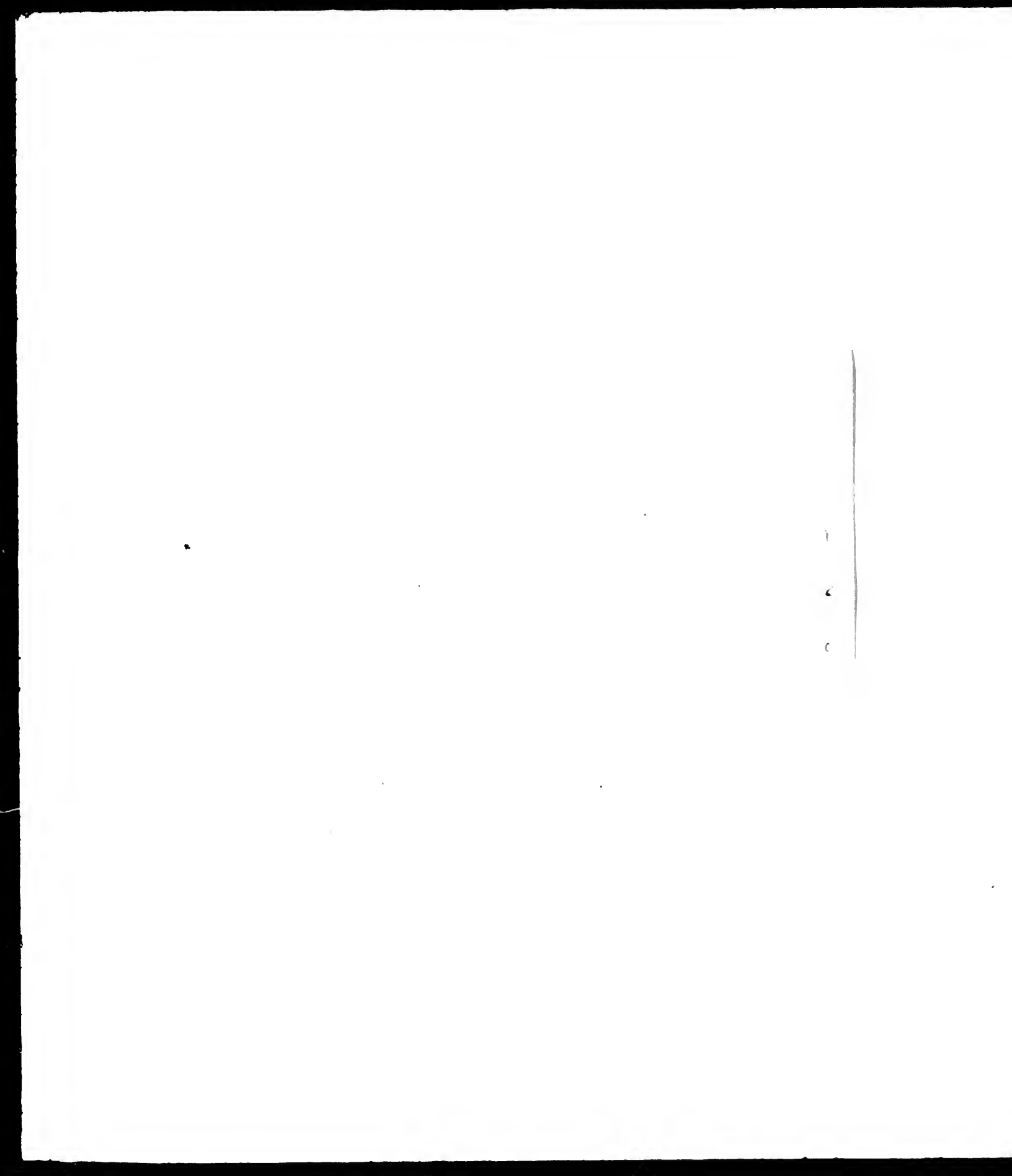


FISHING AT MARGAREE.



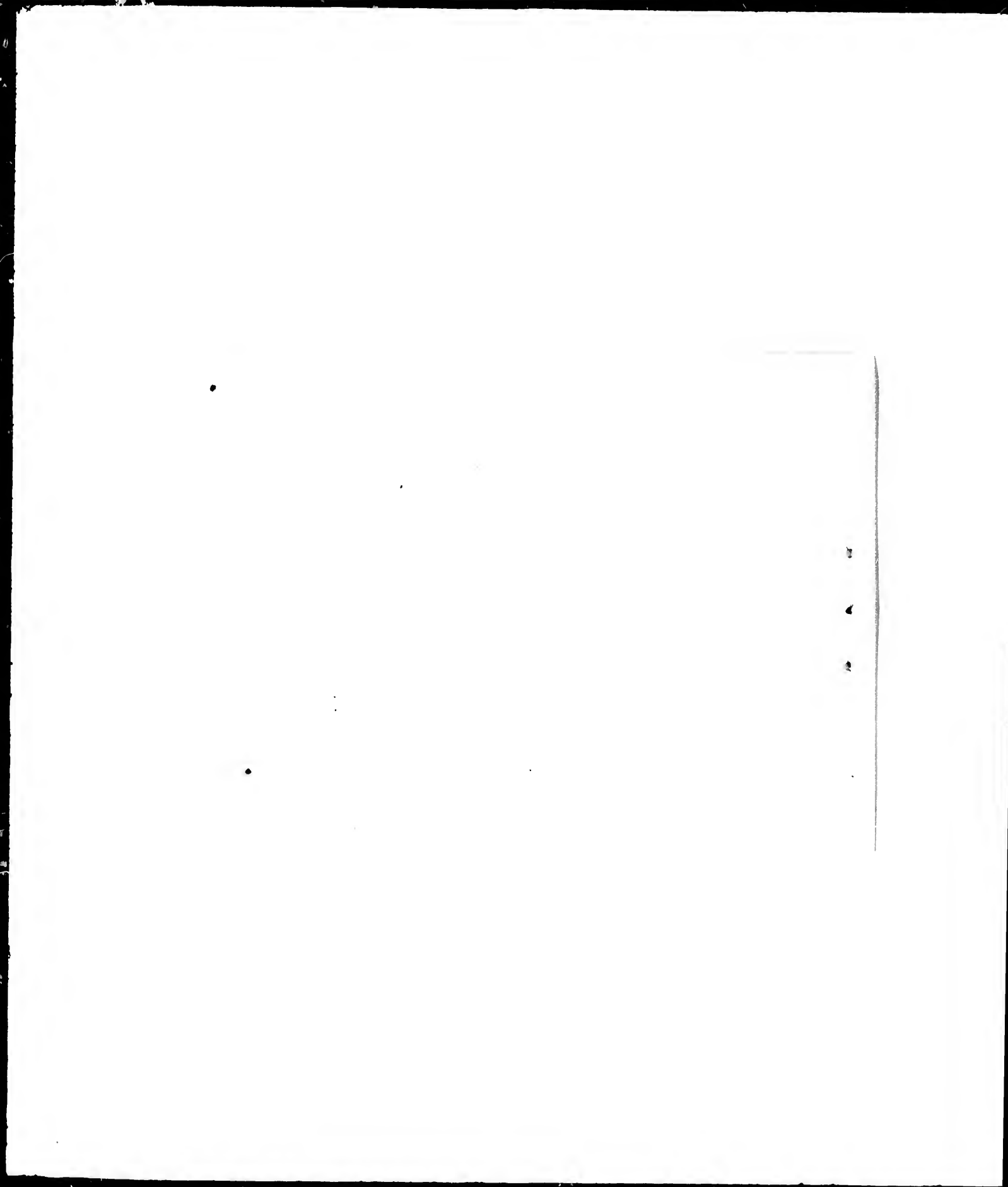


UISGE BAN FALLS.
BADDECK.



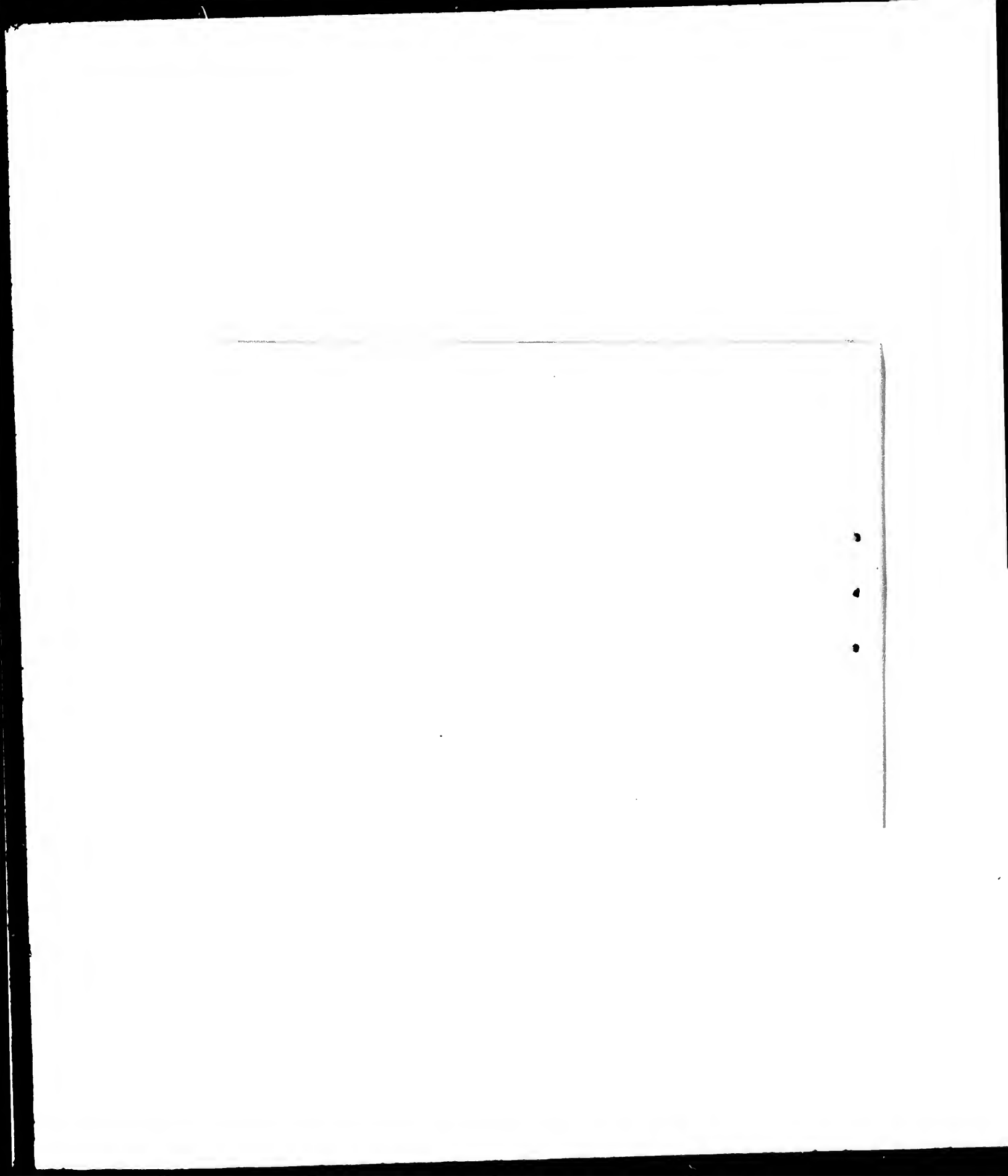


LOCH O'LAU.





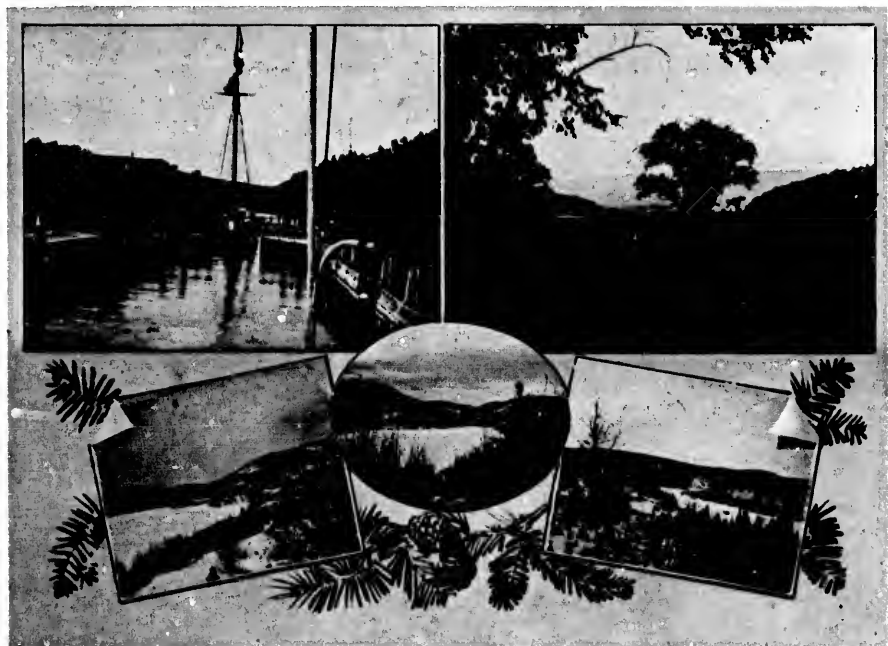
GRAND NARROWS HOTEL.





GRAND NARROWS CONSTRUCTING THE RAILROAD.





ST. PETER'S CANAL.
FRESH WATER LAKE, CAPE NORTH.

HEAD OF INGONISH BAY.

FORKS INTERVALE, MARGAREE.
PLASTERS ASPY BAY.



