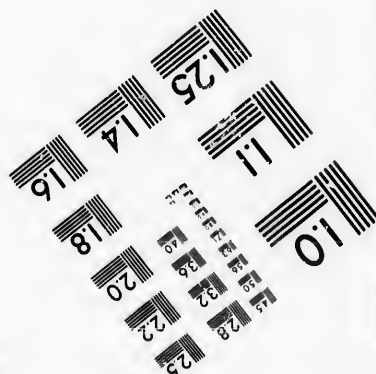
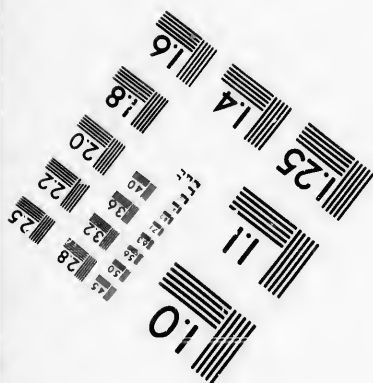
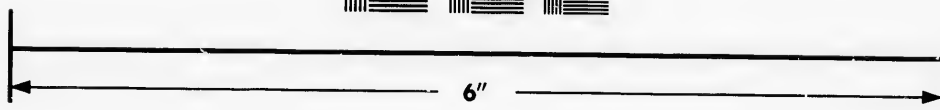
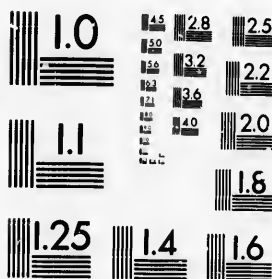


**IMAGE EVALUATION  
TEST TARGET (MT-3)**



**Photographic  
Sciences  
Corporation**

23 WEST MAIN STREET  
WEBSTER, N.Y. 14580  
(716) 872-4503

25  
28  
32  
22  
20  
18

**CIHM/ICMH  
Microfiche  
Series.**

**CIHM/ICMH  
Collection de  
microfiches.**



**Canadian Institute for Historical Microreproductions / Institut canadien de microreproductions historiques**

10

**© 1987**

Technical and Bibliographic Notes/Notes techniques et bibliographiques

The Institute has attempted to obtain the best original copy available for filming. Features of this copy which may be bibliographically unique, which may alter any of the images in the reproduction, or which may significantly change the usual method of filming, are checked below.

L'Institut a microfilmé le meilleur exemplaire qu'il lui a été possible de se procurer. Les détails de cet exemplaire qui sont peut-être uniques du point de vue bibliographique, qui peuvent modifier une image reproduite, ou qui peuvent exiger une modification dans la méthode normale de filmage sont indiqués ci-dessous.

- Coloured covers/  
Couverture de couleur
- Covers damaged/  
Couverture endommagée
- Covers restored and/or laminated/  
Couverture restaurée et/ou pelliculée
- Cover title missing/  
Le titre de couverture manque
- Coloured maps/  
Cartes géographiques en couleur
- Coloured ink (i.e. other than blue or black)/  
Encre de couleur (i.e. autre que bleue ou noire)
- Coloured plates and/or illustrations/  
Planches et/ou illustrations en couleur
- Bound with other material/  
Relié avec d'autres documents
- Tight binding may cause shadows or distortion along interior margin/  
L'aire liurée serrée peut causer de l'ombre ou de la distorsion le long de la marge intérieure
- Blank leaves added during restoration may appear within the text. Whenever possible, these have been omitted from filming/  
Il se peut que certaines pages blanches ajoutées lors d'une restauration apparaissent dans le texte, mais, lorsque cela était possible, ces pages n'ont pas été filmées.
- Additional comments:/  
Commentaires supplémentaires:

- Coloured pages/  
Pages de couleur
- Pages damaged/  
Pages endommagées
- Pages restored and/or laminated/  
Pages restaurées et/ou pelliculées
- Pages discoloured, stained or foxed/  
Pages décolorées, tachetées ou piquées
- Pages detached/  
Pages détachées
- Showthrough/  
Transparence
- Quality of print varies/  
Qualité inégale de l'impression
- Includes supplementary material/  
Comprend du matériel supplémentaire
- Only edition available/  
Seule édition disponible
- Pages wholly or partially obscured by errata slips, issues, etc., have been refilmed to ensure the best possible image/  
Les pages totalement ou partiellement obscurcies par un feuillet d'errata, une pelure, etc., ont été filmées à nouveau de façon à obtenir la meilleure image possible.

This item is filmed at the reduction ratio checked below/  
Ce document est filmé au taux de réduction indiqué ci-dessous.

10X	14X	18X	22X	26X	30X
<input type="checkbox"/>	<input type="checkbox"/>	<input type="checkbox"/>	<input checked="" type="checkbox"/>	<input type="checkbox"/>	<input type="checkbox"/>
12X	16X	20X	24X	28X	32X

The copy filmed here has been reproduced thanks to the generosity of:

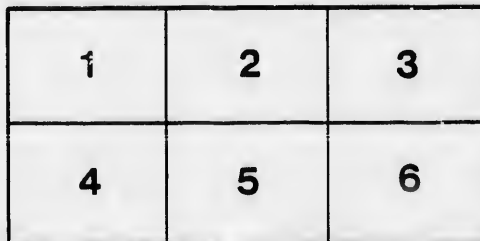
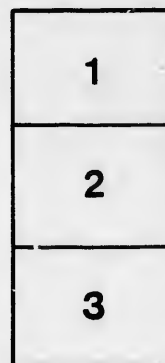
D. B. Weldon Library  
University of Western Ontario  
(Regional History Room)

The images appearing here are the best quality possible considering the condition and legibility of the original copy and in keeping with the filming contract specifications.

Original copies in printed paper covers are filmed beginning with the front cover and ending on the last page with a printed or illustrated impression, or the back cover when appropriate. All other original copies are filmed beginning on the first page with a printed or illustrated impression, and ending on the last page with a printed or illustrated impression.

The last recorded frame on each microfiche shall contain the symbol  $\rightarrow$  (meaning "CONTINUED"), or the symbol  $\nabla$  (meaning "END"), whichever applies.

Maps, plates, charts, etc., may be filmed at different reduction ratios. Those too large to be entirely included in one exposure are filmed beginning in the upper left hand corner, left to right and top to bottom, as many frames as required. The following diagrams illustrate the method:



L'exemplaire filmé fut reproduit grâce à la générosité de:

D. B. Weldon Library  
University of Western Ontario  
(Regional History Room)

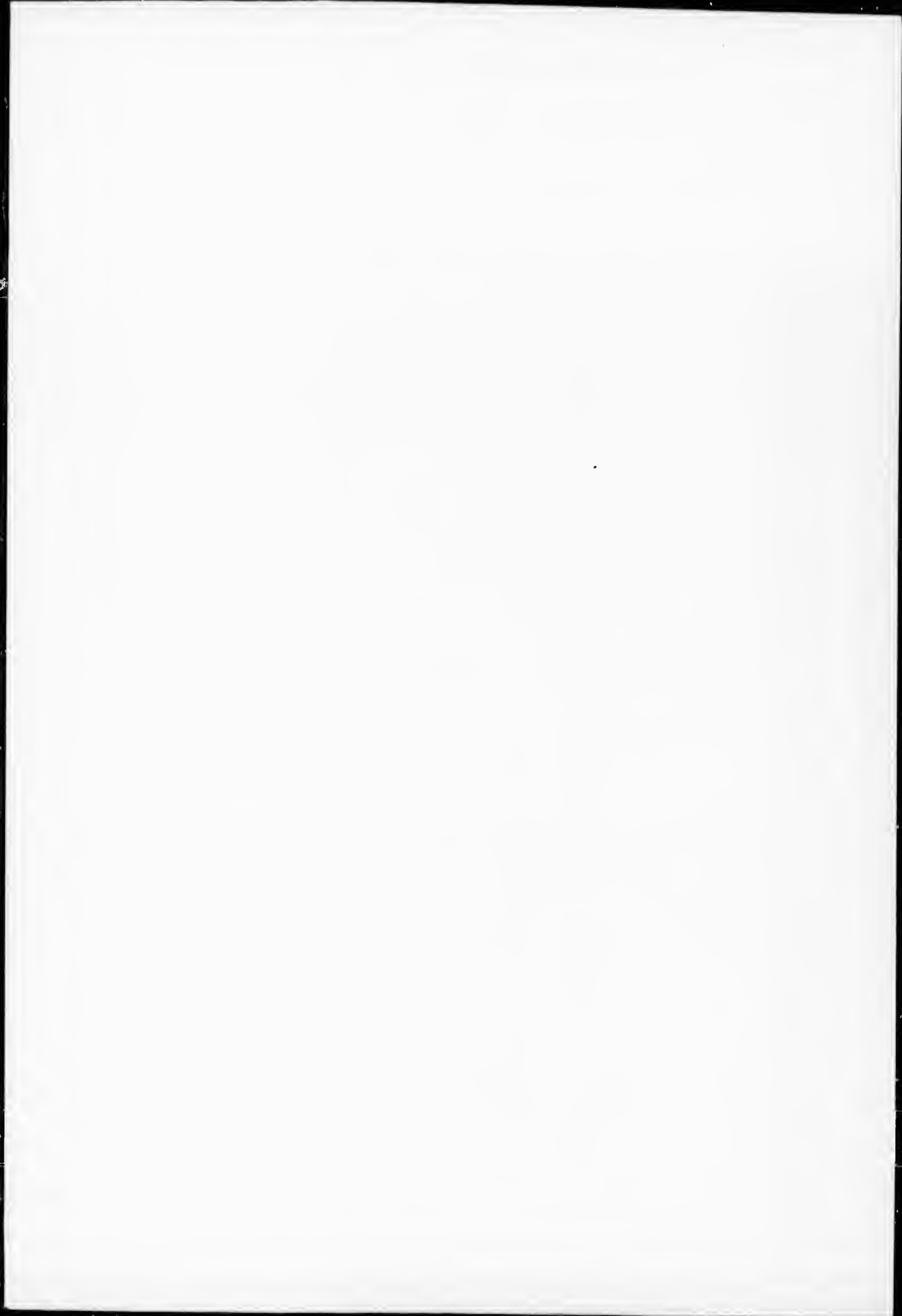
Les images suivantes ont été reproduites avec le plus grand soin, compte tenu de la condition et de la netteté de l'exemplaire filmé, et en conformité avec les conditions du contrat de filmage.

Les exemplaires originaux dont la couverture en papier est imprimée sont filmés en commençant par le premier plat et en terminant soit par la dernière page qui comporte une empreinte d'impression ou d'illustration, soit par le second plat, selon le cas. Tous les autres exemplaires originaux sont filmés en commençant par la première page qui comporte une empreinte d'impression ou d'illustration et en terminant par la dernière page qui comporte une telle empreinte.

Un des symboles suivants apparaîtra sur la dernière image de chaque microfiche, selon le cas: le symbole  $\rightarrow$  signifie "A SUIVRE", le symbole  $\nabla$  signifie "FIN".

Les cartes, planches, tableaux, etc., peuvent être filmés à des taux de réduction différents. Lorsque le document est trop grand pour être reproduit en un seul cliché, il est filmé à partir de l'angle supérieur gauche, de gauche à droite, et de haut en bas, en prenant le nombre d'images nécessaire. Les diagrammes suivants illustrent la méthode.





# TOWN

## MAP

Comprising all the  
streets, and S  
of A

No. on Roll. NA

15.....Armstr  
J 16.....Armstr  
J 25.....Ashwel  
11.....Akroyd

J 75.....Beer, J  
65.....Bundy,  
640.....Buttery  
66.....Brady,  
67.....Babb, V  
68.....Bryans,  
70.....Bell, A  
J 80.....Baker,  
94.....Betts, C

144.....Cain, W  
159.....Calcvt,  
142.....Campbe  
147.....Campbe  
J 152.....Campbe  
67.....Carson,  
880.....Castle,  
J 87.....Chesley  
J 146.....Clark, C

VOTERS' LIST, 1884,

TOWN OF STRATHROY.

POLLING SUB-DIVISION NO. 1,

Comprising all that part of the Town lying West of McKellar and Richmond streets, and South of the road allowance between 4th and 5th Concessions of Adelaide. Polling place, Maitland street school-house.

No. on Roll.	NAME.	Street or Concession.	No. of Lot or Part Lot.	Other Description.	0
15	Armstrong, J. W.	Sydenham place	13, 14	F	16
J 16	Armstrong, W. H.	con. 5	pt 21	F	1
J 25	Ashwell, George	J and W sy.	28, 30	F	1
11	Akroyd, John G.	E Milner	25	F	1
J 75	Beer, Jacob	con 10	pt 10, 13	F	1
65	Bundy, W. H.	W Milner	pt 1	F	1
640	Buttery, William	S Albert	3	F	1
66	Brady, Albert	N Metcalfe	45	H	1
67	Babb, William	E Milner	7	H	1
68	Bryans, Mayant	J and W sy.	34, 50 51	H	1
70	Bell, Achibald	5	pt 21	H	1
J 80	Baker, W. R.	S Albert	25	T	1
94	Betts, George	W McKellar	1 and 2	T	1
144	Cain, William	W McKellar	pt 4, 5	T	1
159	Calcut, John W.	Armstrong sy.	22	F	1
142	Campbell, D. M.	W McKellar	9, 10	F	1
147	Campbell, W. A.	W McKellar	9, 10, 11	F	1
J 152	Campbell, Thomas	N Metcalfe	56, 57	T	1
67	Carson, J. S.	con 5	pt 20	F	1
889	Castle, Joseph	Armstrong sy.	7, 8, 9, 10	F	1
J 87	Chesley, Jordan	N Metcalfe	7	F	1
J 146	Clark, Gilbert	W McKellar	3, 4	F	1



<i>No. on Roll.</i>	<i>NAME.</i>	<i>Street or Concession.</i>	<i>No. of Lot or Part Lot.</i>	<i>Other Description</i>	<i>P.O.</i>
167.....	Clark, John S.....	S Metcalfe .....	pt 5.....	T.....	1
200.....	Cleverdon, L .....	J and W sy.....	45 to 48.....	F.....	1
143.....	Currie, Daniel.....	E Milner.....	21 to 24.....	F.....	1
145 .....	Collins, Oscar.....	W McKellar.....	2.....	T.....	1
J 147.....	Clark, John G.....	W McKellar.....	9, 10, 11.....	T.....	1
149.....	Cook, James.....	S Metcalfe.....	6.....	F.....	4
159.....	Calcut, John.....	Armstrong sy.....	22.....	H.....	1
J 166.....	Campbell, W. C.....	S Albert .....	pt 24.....	H.....	1
J 168.....	Copland, James.....	5.....	pt 20.....	F.....	1
J 202.....	Chalmers, James.....	Corneil's sy.....	pt 15.....	T.....	1
1058.....	Cuddy, Loftus.....	W Oak avenue.....		F.....	1
J 231.....	Dalton, Dukes.....	W Milner.....	41, 42.....	F.....	1
J 236.....	Davey, James .....	Sydenham place.....	12.....	T.....	1
J 238.....	Davis, David.....	Young sy.....	6, 7, 8, 9.....	F.....	1
908.....	Dell, Howard .....	J and W sy, E Oxford.....	33 .....	F.....	1
J 215.....	Dickenson, R.....	E Oxford.....	16.....	F.....	1
J 235.....	Drynan, William.....	E Oxford.....	13.....	F.....	1
232.....	Dunsmore, Thomas.....	con 10.....	pt 11.....	H.....	1
J 219.....	Diprose, Robert.....	Corneil's sy.....	7.....	T.....	1
234.....	Degroat, Charles.....	S Albert.....	25.....	T.....	1
J 769.....	Easterbrook, R.....	E Oak ave.....	5, 6, 7.....	F.....	1
259 .....	Ellico, Charles.....	con 10.....	pt 11.....	F.....	1
263.....	Evans, David.....	S Albert.....	4.....	H.....	1
J 261.....	Ewer, William H.....	T and L sy.....	4.....	F.....	1
262.....	Evans, John H.....	5.....	pt 21.....	T.....	1
302.....	Ferris, Wm. Y., jr.....	Armstrong sy.....	5, 6 .....	H.....	1
J 66.....	Fisher, John.....	W McKellar.....	4, 5.....	F.....	1
J 328.....	Fletcher, W. D.....	W McKellar.....	2.....	F.....	1
J 301.....	Fletcher, Benjamin.....	W McKellar.....	7.....	H.....	1
68.....	Frank, H. G.....	E Oxford.....	34, 50, 51.....	F.....	1
310.....	Frank, Zacharias.....	W Richmond.....	25.....	T.....	1
319.....	Fullerton, James.....	S Albert.....	1.....	F.....	1
307.....	Fawcett, W. F.....	W Oxford.....	19.....	F.....	1
J 343.....	Gilzean, G. D.....	con 10.....	pt 10.....	F.....	1
J 344.....	Gilzean, J. T. A.....	S Albert.....	20, 21, 22.....	F.....	1
J 366.....	Goodwin, A.....	W Oxford .....	6, 7 .....	F.....	1
J 345.....	Guille, Nicholas.....	10.....	pt 11.....	T.....	1
349.....	Gilley, John.....	W Milner.....	pt 8, 9.....	H.....	1
351.....	Geoghegan, Charles.....	Sydenham place.....	15.....	F.....	1
356.....	Gough, Henry.....	Armstrong sy.....	23 and 24.....	F.....	1

FOLLING SUB-DIVISION NO. 1.

<i>No. on Roll.</i>	<i>NAME.</i>	<i>Street or Concession.</i>	<i>No. of Lot or Part Lot.</i>	<i>Other Description.</i>	<i>P.O.</i>
424	Henderson, Gregg	Corneil sy	2	F	1
J 406	Hinchcliffe, George W.	Armstrong sy	1, 2, 3, 4	F	1
J 433	Humphries, Samuel	T and L Co.'s sy	6	F	1
236	Hunt, Squire	Sydenham place	12	T	1
386	Hutcheoff, William	Hyman's sy	3 to 5, 13 to 18	F	1
J 407	Hodgson, John	T & W sy	29	F	1
410	Hendershot, Alonzo	5	pt 21	F	1
351	Ivison, Rev. J. A.	Sydenham place	15	F	1
J 504	Kettlewell, Richard	S Burns	2, 3	F	1
512	Ketchum, H. E.	S Albert	20, 21, 22	H	1
505	Keys, John	E Milner	33, 34	T	1
345	Kittredge, A. H.	10, pt 10	8, 9	F	1
J 506	Kinder, Charles A.	T & W sy	31, 32	T	1
262	Lenfestey, Thomas	5	pt 21	F	1
J 553	Lenfestey, James	W Richmond	53, 54	F	1
J 531	Lighthouse, George	W McKellar	1	H	1
630	Lindley, George	E Oak	20	F	1
532	Lucas, W. J.	Armst	25, 26	F	1
J 529	Lindsay, John	E Oak	13, 14	F	1
534	Lighthouse, Lanson	T & W	41, 42	F	1
J 561	Lauler, J. E.	E Oxford	19	T	1
J 712	Maitland, E.	W Oxford	9, 10	T	1
J 346	Martin, Samuel	S Metcalfe	8, 9	F	1
J 706	Meek, W. H.	S Albert	2	F	1
143	Morgan, John	E Milner	pt 29, 30	F	1
J 640	Munro, William	S Albert	3	T	1
619	Murphy, Robert	10	pt 10	H	1
701	Mann, George A.	W Oxford	pt 6	T	1
J 707	Murray, W. H.	T and W sy	4, 5, 6, 7	F	1
618	McDade, William	W McKellar	park lot 1	F	1
642	McLarty, Robert	Hyman sy	2	F	1
708	McIntosh, J. W.	J and W sy	35 to 38	F	1
166	McIntyre, Hugh	S Albert	24	F	1
J 726	Neil, George H.	W McKellar	18	F	1
J 734	Noble, James	E Victoria and W Oxford	pt lot	F	1

## POLLING SUB-DIVISION NO. 1.

No. on Roll.	NAME.	Street or Concession.	No. of Lot or Part Lot.	Other Description	P.O.
J 735	Noble, D. C.	"	"	F	1
739	Nugent, Edmund	J and W sy	58 to 61	F	1
739	Nugent, E. W.	"	"	F	1
J 746	O'Dwyer, Michael	T and L sy	5	F	1
J 745	Owens, Henry	N Burns	1, 2	F	1
J 748	O'Neil, John H.	T and W sy	53, 54	O	1
J 770	Parke, Edward	W Milner	1	F	1
795	Pincombe, Richard	Hyman sy	6 to 14	F	1
J 569	Piott Anthony	E Oak avenue	5, 6, 7	H	1
785	Pullen, George	Hyman's sy	1	F	1
804	Porter, George	Armstrong sy	18, 19	F	1
J 833	Ray, Samuel	W McKellar	5, 6	F	1
J 829	Richards, Robert	"	5	H	1
J 300	Riddal, Andrew	J and W sy	39	F	1
J 804	Routledge, W. H.	Armstrong sy	18, 19	T	1
807	Ryan, David	"	5	H	1
805	Rooney, James	S Metcalfe	pt 5	H	1
818	Rapley, Manfred	W Oxford	pt 19	H	1
850	Robertson, John	"	17	H	1
J 884	Saxton, Frank B.	J and W sy	12, 13, 14	H	1
J 898	Shields, John	Hyman sy	pt 1	F	1
J 878	Sinclair, Dougald	W McKellar	8	F	1
933	Smith, J. G.	E Oak ave	15, 21, 22	H	1
J 921	Smith, Henry	E Oak ave	16, 18, 19	F	1
J 80	Smith, J. W.	J and W sy	62, 63	F	1
J 92	Smith, Henry C.	E and W Oak ave	2, 4, 5, 8, 9	T	1
J 908	Smith, William C.	E Oxford	33	T	1
J 938	Springer, Menno	S Albert	5	F	1
805	Steer, George	S Metcalfe	4, 5	F	1
94	Steer, George	W McKellar	1, 2	F	1
879	Shea, William	W Milner	43, 44	H	1
880	Saulsbury, John	Armstrong sy	7, 8, 9, 10	H	1
901	Stevenson, Edward	T and Leo sy	7	O	1
J 999	" Robert	"	7	F	1
292	Taylor, James F.	Cornell sy	7	T	1
884	Thompson, Isaac	J and W sy	12, 13, 14	F	1
954	Thompson, James	W Oxford	8	F	1
J 263	Thompson, A.	S Albert	4	F	1

POLLING SUB-DIVISION NO. 1.

5

<i>No. on Roll.</i>	<i>NAME.</i>	<i>Street or Concession.</i>	<i>No. of Lot or Part Lot.</i>	<i>Other Description.</i>	<i>Ac.</i>
J 958.....	Trothan, William.....	W McKellar.....	16.....	F.....	1
J 948.....	Tyler, John.....	S Burns.....	1.....	H.....	1
J 302.....	Tomlinson, Thos.....	Armstrong sy.....	5, 6.....	F.....	1
J 970.....	Veitch, Frank.....	E Oxford.....	17.....	F.....	1
152.....	Walker, W. B.....	N Metcalfe.....	56, 57.....	F.....	1
1012.....	Widdis, Robert.....	.....	5..... pt 20.....	F.....	1
982.....	Wray, William.....	.....	10..... pt 14.....	H.....	1
999.....	Weeks, George.....	T and L sy.....	7.....	H.....	1
1036.....	Whyte, E. A.....	W Milner.....	54 to 60.....	F.....	1
1040.....	Young, George.....	.....	5..... W hf 21.....	T.....	1

**PART II.—Persons entitled to vote at Municipal Elections O.S.A.**

68.....	Bryans, Margaret.....	J and W sy.....	34, 50, 51.....	H.....	4
162.....	Corneil, Emma.....	Corneil's sy.....	7.....	F.....	1
161.....	Crawford, Isabella.....	Corneil's sy.....	pt 27.....	H.....	1
162.....	Cowan, Alice.....	".....	pt 27.....	H.....	1
506.....	Eakins, Hannah.....	T and W sy.....	31, 32.....	F.....	1
231.....	Kilty, Mrs. H. J.....	.....	10..... pt 10.....	F.....	1
516.....	Kilty, Leafic.....	.....	10..... pt 10.....	F.....	1
637.....	Maxwell, Many A.....	S Albert.....	pt 25.....	T.....	1
638.....	Malone, Eliza.....	".....	pt 25.....	T.....	1
639.....	McBeth, Jane.....	Corneil's sy.....	3.....	T.....	1
372.....	McIntyre, Mrs. Dr.....	S Albert.....	20, 21, 22.....	F.....	1
723.....	Pearce, Jane.....	Corneil's sy.....	1.....	H.....	1
70.....	Saul, Ann.....	.....	5..... pt 21.....	F.....	1
712.....	Smith, Rosina.....	W Oxford.....	9, 10, 12.....	F.....	1
850.....	Saunders, Elizabeth.....	W Oxford.....	17.....	F.....	1
899.....	Smythe, Harriett.....	Corneil's sy.....	pt 1.....	H.....	1
866.....	Smith, Mrs.....	E Oxford.....	17.....	H.....	1
901.....	" Mary.....	".....	7.....	F.....	1

### POLLING SUB-DIVISION NO. 2.

**Comprising all that part of the Town lying west of Maria street to its intersection at the side-road, thence west thereof and north of the road allowance between the 4th and 5th concessions of Adelaide. Polling place at or near R. P. Smith's coach-house**

No. on Roll.	NAME.	Street or Concession.	No. of Lot or Part Lot.	Other Description	R <sup>o</sup>
J 16.....	Armstrong, W. H.	con 4.....	pt 20.....	F.....	1
378.....	Alison, B. H.	N Front.....	13.....	F.....	1
475.....	Alison, B. H.	S North.....	pt 7 and 8.....	F.....	1
J 81.....	Baskerville, Thomas	con 4.....	pt 20.....	T.....	1
J 82.....	Baskerville, J. W.	Crealy sy.....	5, 6.....	F.....	1
87.....	Bishop, George	Saulsbury sy.....		T.....	2
88.....	Bishop, George, jr.	Saulsbury sy.....		T.....	2
J 731.....	Brett, Robert	S North.....	9.....	F.....	1
J 84.....	Brown, Thomas	4.....	pt 21.....	F.....	1
J 85.....	Brown, Donald	4.....	pt 21.....	F.....	1
J 93.....	Butler, James	4.....	pt 21.....	F.....	1
172.....	Bishop, George	Saulsbury sy.....	11.....	F.....	1
207.....	Cameron, Ed. R.	S Saulsbury st.....	4.....	T.....	1
J 171.....	Challoner, Thomas S.	Saulsbury sy.....	N hf 25, 26.....	F.....	1
J 199.....	Clark, John R.	S North.....	pts 7, 8.....	F.....	1
J 195.....	Crealy, Truman	con 4.....	pt 20.....	F.....	1
J 172.....	Croucher, George	Saulsbury sy.....	11.....	H.....	1
J 173.....	Cummings, John	Saulsbury sy.....	8.....	F.....	1
175.....	Cummings, Charles	con 4.....	pt 22.....	F.....	1
239.....	Dalc, Thomas	Saulsbury sy.....	pt 26.....	F.....	1
J 423.....	Dell, Hiram	N Albert.....	26.....	F.....	1
237.....	Dudley, George	4.....	S E pt 21.....	F.....	1
272.....	Eakins, S. A.	S Front.....	4.....	H.....	1
J 270.....	Eakins, Joseph	Saulsbury sy.....	26.....	F.....	1
J 267.....	Eastman, Elijah	con 4.....	21.....	T.....	1
J 266.....	Eastman, Wesley	con 4.....	21.....	T.....	1
267.....	Eastman, Chester	con 4.....	21.....	F.....	1
271.....	Edwards, H. F.	Saulsbury sy.....	A.....	F.....	1
268.....	Elliott, John	Rapley sy.....	1.....	F.....	4
269.....	Elliott, Charles	Rapley sy.....	1.....	F.....	4
J 279.....	Evans, Frank F.	S Front.....	13.....	T.....	1
J 265.....	Evoy, George	4.....	pt 21.....	T.....	1

POLLING SUB-DIVISION NO. 2.

7

<i>No. on Roll.</i>	<i>NAME.</i>	<i>Street or Concession.</i>	<i>No. of Lot or Part Lot.</i>	<i>Other Description.</i>	<i>R.O.</i>
J 362.....	German, G. G.....	Rapley sy.....	15.....	T.....	1
J 362.....	Gooden, Charles.....	Rapley sy.....	15.....	F.....	1
J 378.....	Gordon, Thomas J.....	N Front.....	13.....	T.....	1
J 375.....	Gott, William.....	N North.....	2.....	F.....	1
J 377.....	Grist, Charles.....	Saulsbury sy.....	1.....	F.....	1
J 368.....	Greenaway, Charles.....	Rapley sy.....	5.....	F.....	1
354.....	Gott, David.....	S North.....	5, 6.....	T.....	1
367.....	Grant, W. H.....	Saulsbury sy.....	A.....	F.....	1
J 430.....	Hanley, J. H.....	N North.....	13.....	F.....	1
J 425.....	Holmes, John.....	N Albert.....	36.....	T.....	1
J 425.....	Hull, Jacob.....	Saulsbury sy.....	pt 21.....	F.....	1
J 426.....	Harris, William.....	Saulsbury sy.....	3.....	F.....	1
422.....	Hilton, Friend.....	N Albert.....	37.....	F.....	1
402.....	Harris, Thomas.....	Rapley sy.....	7.....	F.....	1
J 429.....	Hilton, Alexander.....	S North.....	pts 5, 6.....	F.....	1
J 440.....	Hoskin, F. T.....	N Front.....	13.....	H.....	1
354.....	Hawkin, David.....	S North.....	pts 5, 6.....	F.....	1
J 427.....	Hutton, G. Y.....	Saulsbury sy.....	pt A.....	F.....	1
457.....	Hunter, George.....	S Front.....	12.....	T.....	1
492.....	Ivor, John.....	4.....	pt 22.....	F.....	1
J 475.....	Irvine, Samuel.....	S North.....	7, 8.....	T.....	1
J 472.....	Jay, William.....	S Front.....	N hf 8.....	T.....	1
J 473.....	Jury, William.....	Rapley sy.....	7, 8.....	H.....	1
J 508.....	Kerr, Robert.....	4.....	pt 21.....	T.....	1
543.....	Lee, Andrew.....	Rapley sy.....	3.....	F.....	1
J 545.....	Leonard, Micheal.....	N Centre.....	pt 49.....	T.....	1
563.....	Lenfestey, John.....	S Front.....	9, 10.....	F.....	1
J 542.....	Leitch, D. L.....	Rapley sy.....	9.....	F.....	1
J 457.....	Manson, James.....	S Front.....	12.....	F.....	1
651.....	Marshall, George.....	Crealy sy.....	31.....	F.....	1
J 654.....	Mitchell, Hugh.....	N North.....	14.....	F.....	1
657.....	Moore, William.....	N Centre.....	39.....	T.....	1
473.....	McLarty, Robt.....	Rapley sy.....	7, 8.....	F.....	1
715.....	Mackintosh, Fred P.....	N Front.....	pt 17.....	H.....	1
J 641.....	McIntosh, J. H.....	N Front.....	S hf 8.....	H.....	1
J 695.....	Macranlt, J. S.....	N Front.....	pt 16.....	H.....	1
685.....	McColl, Hugh.....	Saulsbury sy.....	20, 21.....	F.....	1

## POLLING SUB-DIVISION NO. 2.

<i>No. on Roll.</i>	<i>NAME.</i>	<i>Street or Concession.</i>	<i>No. of Lot or Part Lot.</i>	<i>Other Description</i>	<i>P.O.</i>
J 717.....	McBride, William.....	S North.....	13, 14, 9.....	F.....	1
J 649.....	McIntyre, Peter.....	Saulsbury sy.....	15, 16.....	F.....	1
678.....	McCrow, Thomas.....	4.....	pt 21.....	F.....	1
J 741.....	Nicholson, Henry.....	Rapley sy.....	5, 6.....	F.....	1
J 728.....	Nicholson, Robert.....	4.....	pt 20.....	F.....	1
441.....	Nugent, Edmund.....	N Front.....	13.....	F.....	1
J 731 .....	Nishol, John.....	Reed's sy.....	S N 9.....	H.....	1
J 751.....	Orchard, George.....	Saulsbury sy.....	1.....	F.....	1
J 755.....	O'Dwyer, Patrick.....	S Front.....	pt 13.....	T.....	1
J 776.....	Phillips, William.....	Saulsbury sy.....	B.....	F.....	1
J 777.....	Petch, Francis.....	Saulsbury sy.....	17.....	F.....	1
774.....	Parker, James.....	Crealy sy.....	1, 2, 3, 4.....	F.....	1
J 696.....	Rapley, William.....	Rapley sy.....	2.....	F.....	1
J 851.....	Richardson, Thomas.....	S Front.....	11.....	F.....	1
J 821 .....	Robertson, D. S.....	Rapley sy.....	W hf 14.....	T.....	1
J 827.....	Raison, Andrew J.....	N North.....	15.....	F.....	1
J 81.....	Rowland, Edward.....	4.....	pt 20.....	F.....	1
825.....	Rowland, Edward.....	N N.....	W pt 2.....	H.....	1
508.....	Stevenson, Judge.....	4.....	pt 21.....	F.....	1
J 899.....	Shepherd, William.....	4.....	pt 20.....	F.....	1
J 962.....	Sellers, William.....	Rapley sy.....	6.....	F.....	1
J 654.....	Smith, Thomas.....	N North.....	14.....	H.....	1
J 917.....	Sutherland, Robert.....	S North.....	5, 6.....	H.....	1
J 967.....	Smith, R. P.....	Rapley sy.....	10, 11, 12.....	F.....	1
903.....	Scott, C. G.....	4.....	pt 21.....	F.....	1
J 932.....	Snell, W. F.....	N Albert.....	11, 12.....	F.....	1
937.....	Smith, Wm. T.....	N Front.....	16, 17.....	T.....	1
854.....	Sanderson, Rev. Dr.....	N Front.....	13, 14.....	O.....	1
J 902.....	Seed, Hugh.....	Rapley sy.....	6.....	F.....	1
954.....	Thompson, James.....	Saulsbury sy.....	3, 13, 10.....	F.....	1
J 963.....	Tucker, Titus.....	Rapley sy.....	16.....	F.....	1
J 493.....	Tisdall, Fred.....	4.....	22.....	F.....	1
272.....	Thompson, Alex.....	S North.....	4.....	F.....	1
J 971.....	Urquhart, Hector.....	N Albert.....	38.....	F.....	1
1015.....	Walker, W. B.....	Rapley sy.....	4.....	F.....	1
J 1013.....	Woodhull, C. W.....	con 4.....	pt 20.....	T.....	1

POLLING SUB-DIVISION NO. 2.

9

<i>No. on Roll.</i>	<i>NAME.</i>	<i>Street or Concession.</i>	<i>No. of Lot or Part Lot.</i>	<i>Other Description.</i>	<i>Q</i>
1014	Williston, Rev. J. K.	con 4	pt 21	F	1
1016	Wiley, David	Saulsbury sy	12	F	1
93	Wray, William	N North	1	F	1
1017	Weeks, George	Saulsbury sy	8	F	1
1018	Wilson, William	4	pt 22	H	1
1048	Zavitz, John	Saulsbury sy	14, 23, 24, 27	F	1

**PART II.—Persons entitled to vote at Municipal Elections ONLY.**

86	Brown, Eliza	Saulsbury sy	18	F	1
169	Crealy, Eliza	Crealy sy	2	F	1
265	Early, Mundana	Con 4	pt 21	F	1
207	Gale, Mary E.	Saulsbury sy	4	F	1
355	Gibson, Mary	N North	2	F	1
	McKean, Sarah	4	22	F	1
918	Scatcherd, Margaret	S North	15	F	1

**POLLING SUB-DIVISION NO. 3,**

**Comprising all that part of the Town lying West of Caradoc street, north of Centre street to Frank street, thence north of James street to Maria street and its intersection with the side-road. Polling place at the Town Hall.**

544	Andrews, Rev. A.	N North	4 pt 12	F	1
J 31	Avery, Richard	pt 22	S Front	T	1
34	Attwood, P. H.	N Front	pt 7	F	4
J 32	Avery, William	N Centre	W pt 45	T	1
19	Adanson, Jas	N Centre	S T	F	1
24	Andrews, C. M.	N Centre	8 of 50	T	1
361	Ashwell, George	N Centre	pt 48, 49	F	1



No. on Roll.	NAME.	Street or Concession.	No. of Lot or Part Lot.	Other Description	P. O.
92.....	Beswick, Rev. S.....	N Centre.....	pt 41.....	H.....	1
432.....	Bryans, Wm.....	N Centre.....	E hf 43, 44.....	F.....	1
J 95.....	Bailey, Thos.....	S Centre.....	76.....	F.....	1
J 964.....	Bowley, James.....	S Front.....	16 and pt 17.....	F.....	1
J 117.....	Bowley, James.....	S Front.....	pt 18, 17.....	F.....	1
J 109.....	Bixel, Mathew.....	N Front.....	rear T U V.....	F.....	1
J 110.....	Bixel, Cyrus.....	".....	".....	F.....	1
J 115.....	Barber, J. W.....	N Front.....	E ht 7.....	H.....	1
118.....	Bettridge, Wm.....	N Front.....	9 and 10.....	F.....	1
785.....	Bond, Isaac.....	N Centre.....	pt 77.....	F.....	1
J 194.....	Bowley, James.....	S Front.....	pt V.....	F.....	1
548.....	Buck, William.....	N Albert.....	70.....	F.....	1
21.....	Bartlett, Frank.....	N centre.....	pt S & T.....	F.....	1
J 91.....	Brodricht, Werner.....	N North.....	pt S.....	F.....	1
J 102.....	Barry, John.....	N Front.....	pt 1 & 2.....	F.....	1
103.....	".....	N Centre.....	48, 49.....	T.....	1
J 183.....	Cox, James.....	S Front.....	12 of 24.....	F.....	1
198.....	Cameron, D. M.....	N Front.....	pt W.....	F.....	1
J 206.....	Crispin, W. T.....	S Front.....	pt 21, 22.....	T.....	1
31.....	Crispin, Thomas.....	S Front.....	21, 22.....	F.....	1
J 201.....	Chalmers, James.....	N Front.....	W pt 4.....	F.....	1
961.....	Cooper, J. C.....	S Centre.....	pt 74.....	F.....	4
J 964.....	Cleverdon, L.....	S Front.....	16, 17.....	F.....	1
176.....	Colter, Charles.....	S Centre.....	69.....	F.....	1
177.....	Coghlan, Richard.....	".....	E hf V.....	T.....	1
J 181.....	Cummings, John.....	".....	9 of 50.....	T.....	1
J 193.....	Crealy, Truman.....	S Front.....	pt T.....	T.....	1
194.....	Clark, W. G.....	".....	pt V.....	T.....	1
J 195.....	Cross, William.....	N.....	E pt V.....	T.....	1
J 203.....	Campbell, Thomas M.....	".....	pt 16.....	T.....	1
295.....	Cock, S. A.....	S.....	pt 17, 18.....	T.....	1
247.....	Degroat, James.....	N North.....	W pt 8.....	F.....	1
242.....	Dubois, Joseph.....	N Centre.....	W hf 23.....	H.....	1
245.....	Dingman, W S.....	".....	48, 49.....	T.....	1
J 253.....	Diggins, J C.....	S Front.....	U.....	T.....	1
J 220.....	Dumbrill, R. & Nugent.....	N Front.....	pt U.....	T.....	1
J 216.....	Dickenson, Richard.....	S Front.....	Arcade.....	T.....	1
J 232.....	Dyas, W. J.....	S Front.....	pt U.....	T.....	1
J 249.....	Dewar, Wm.....	Kittredge Ave.....	18, 19.....	H.....	1
J 242.....	Dubois, John.....	N Centre.....	pt 43.....	F.....	1
J 241.....	Dingman, Absalom.....	N North.....	12.....	T.....	1
J 219.....	Diprose, Robert.....	S Front.....	Arcade.....	T.....	1
J 221.....	Dawson, Wm.....	N Front.....	pt X.....	T.....	1
J 243.....	Davis, F. H.....	N Centre.....	W pt T.....	T.....	1
285.....	Edwards, Richard.....	N Front.....	pt 3.....	F.....	10
J 196.....	Edwards, H. F.....	".....	".....	T.....	1

POLLING SUB-DIVISION NO. 3.

11

<i>No. on Roll.</i>	<i>NAME.</i>	<i>Street or Concession.</i>	<i>No. of Lot or Part Lot.</i>	<i>Other Description.</i>	<i>P.O.</i>
198	Fawcett, W. F.	Kittredge Ave.	13 to 15 and 17, 18.	F	1
841	Francis, G. M.	S Front.	pt U	F	1
317	Findlay, James	N Centre	S T	T	1
J 319	Fullerton, Jas.	N Centre	48, 49	T	1
J 313	Ferguson, Andrew	N Centre	W pt W	T	1
J 326	Folinsbee, John	N Front	11	H	1
J 455	Fletcher, W. D.	"	717	T	1
361	Graham, Dougald	N Centre	48, 49	T	1
J 360	Geldes, James R.	N Front	pt T	T	1
J 390	Geddes, William	"	"	T	1
J 360	Goodwin, Abraham	S Front	26	T	1
J 367	Grant, W. H.	N Front	Arcade	T	1
J 376	Gott, William	S Front	pt 21	T	1
J 377	Grist, Charles	S Front	23	F	1
372	Graham, George	"	pt 1	T	1
375	Going, Charles C	"	1, 2	T	1
J 433	Harrison, F. L.	S and N North	11, 10	F	1
431	Hungerford, Becher	S Centre	71	H	1
J 432	Higman, Andrew	N Centre	pt 44	H	1
253	Howard, George	S Front	pt U	F	1
448	Hay, W. H.	N Front	pt V	T	1
J 105	Harrington, Daniel	N Centre	48, 49	T	1
451	Hutchinson, Ed	N Front	pt 3	T	1
J 849	Healy, James	N Front	pt 7	F	1
J 381	Harrison, Thos. F.	S Front	pt 22	T	1
J 456	Hambly, John	"	pt 7	T	1
J 491	Ivor, John	N Front	1, 2	T	1
J 492	Ivor, David	N Front	1, 2	T	1
J 490	Irwin, John	Income	Front-st.		1
J 470	Jay, Charles G.	S Centre	pt 44	H	1
549	Johnston, John	N Centre	S T U	F	1
J 1057	Johnston, Alexander	Kittredge ave	27, 28	F	1
J 495	Johnson, John	S Front	E hf 15	T	1
567	Koppelberger, Henry	N Albert	70	F	1
J 512	Ketchum, H. E.	"	101, 102, 103	F	1
245	Kittredge, A. H.	N Centre	pt 46	T	1

## POLLING SUB-DIVISION NO. 3.

No. on Roll.	NAME.	Street or Concession.	No. of Lot or Part Lot.	Other Description	P.O.
558	Learoyd, Rev. John.	N Front.	W pt V.	O	1
555	Letzgas, Joseph	"	pt U.	T	1
565	Lindsay, W. B.	"	12.	F	1
J 564	LeGallee, Thomas.	S North.	pt 7.	F	1
J 544	Large, Henry.	N North.	12.	H	1
J 557	Lee, James H.	S Front.	S pt 17, 18.	T	1
561	Lauler, J. E.	N Front.	11.	F	1
549	Levitt, Alexander.	S Front	S T U	T	1
326	Lauler, Margaret	"	"	F	1
548	Lucas, W. J.	S Centre.	pt 70.	T	1
553	Learoyd, A. D.	N Front.	pt V.	T	1
692	Morrison, Peter.	S Front.	pt V.	T	1
J 690	Meekison, A.	S Front.	pt T V.	F	1
J 656	Macdonald, D. E.	"	pt 14.	T	1
J 703	Meek, William H.	N Front	pt X.	T	1
J 794	Meek, F. W.	"	E pt X.	T	1
J 655	McIntyre, Patrick.	"	9.	F	1
660	Miller, Robert.	N Centre.	N hf 44.	H	1
662	Mallon, John.	S Centre	pt 74.	F	1
J 667	McKellar, Malcolm.	"	75.	F	1
J 709	Matthews, Philip.	S Front	11 of 24.	T	1
28	McLarty, Robert.	N Front	4, 5.	F	1
688	McGarvey, John.	N Centre	pt U T.	H	1
700	Mann & Co.	N Front.	T.	T	1
J 707	Murray, W. H.	N Front.	pt 1.	F	1
J 694	Macrault, John S.	S Front.	Arcade.	T	1
J 693	McLaren, A.	S Front.	pt V.	T	1
J 221	Moore, W. C.	N Front.	pt X and W.	F	1
J 713	Moore, Isaac.	S Front.	19.	F	1
J 375	Manson, James	N Front.	1.	F	1
J 676	McKellar, John.	S Centre	79.	H	1
92	McPherson, John.	N Centre.	pt 41.	F	1
978	McIntyre, Hugh.	N Front.	pt 3.	F	1
177	Manning, John.	N Centre.	W hf U.	F	1
720	McKellar, John.	N Centre.	50, 51.	F	1
476	Meekison, A.	N Centre	44.	F	1
J 711	McNeil, David.	N Front	4.	T	1
J 404	McDougall, P. M.	N Centre.	48, 49.	T	1
559	McBean, Donald.	N Front.	pt V.	T	1
J 347	Nugent, Dr.	S Centre.	72	F	1
J 740	Napper, Charles.	N Front.	pt 5.	T	1
736	Noble, James.	"	pt X.	T	1
737	" D. C.	"	pt X.	T	1
738	" Joseph J.	"	pt X.	T	1
J 755	O'Dwyer, Patrick.	N Front.	X	T	1
252	Orchard, George	S Front.	T U.	F	1

POLLING SUB-DIVISION NO. 3.

No. on Roll.	NAME.	Street or Concession.	No. of Lot or Part Lot.	Other Description.	P.O.
370	Pearce, Jane	N Front	pt U	F	1
780	Paine, Benjamin	N Centre	41, 42	T	1
J 781	Paine, John	"	47	T	1
J 695	Parker, J. W.	S Front	Arcade	T	1
J 792	Parker, J. W.	N Centre	40	F	1
J 794	Parker, C. W.	N Front	6	F	1
J 203	Parker, Harvey	"	pt 6	F	1
438	Patterson, Samuel	S Front	pt 15	F	1
702	Pool, Irving	N Front	E pt V	F	1
J 314	Parks, William	N Centre	W pt 45	F	1
779	Perry, Robert	N Centre	S T	T	1
787	Pratt, Wm	"	78, 79	T	1
793	Pike, Richard	N Front	pt 5	T	1
798	Peterson, A. E. W.	S Front	pt 26	T	1
J 526	Raymond, John	N North	11	H	1
J 841	Rapley, L. F.	S Front	pt U	T	1
846	Rapley & Co.	N Front	1	T	1
J 850	Robertson, John	S Front	pt 22	H	1
J 848	Rowland, E.	N Front	pt 7	T	1
822	Rothwell, Thomas	con. 4	21	F	1
J 830	Roach, B. G.	S Centre	77, 78	T	1
J 181	Ray, Samuel	N Centre	2 of 50	F	1
319	Rose, Wilhelmina	"	48, 49	F	1
J 917	Sutherland, Robt	N Centre	pt 48, 49	F	1
431	Scott, C. G.	N Albert	71	F	1
709	Snell, F. W.	S Front	pt U	T	1
J 112	Small, J. S.	S Front	pt 26	T	1
939	Stevenson, Alex	N Front	pt 6	T	1
J 327	Smith, W. T.	N Front	pt 2	T	1
J 939	Springer Menno	S Front	Arcade	T	1
940	Stevenson, R. A.	N Front	Income	1	
855	Scatcherd, E. W.	4	21, 22, 26	F	1
102	Scott, C. G.	N Front	pt V	F	1
929	Scott, John	S Front	E hf T	T	1
912	Saulsbury, John	N Albert	73	F	1
20	Se well, Samuel	N Centre	J T	F	1
220	Street, N. K.	N Front	U	F	1
707	Smith, Charles	Con. 4	22 E Maria	F	1
J 910	Stevens, Joseph	N Centre	S T	H	1
J 934	Springs, L. H.	N Front	pt W	T	1
J 935	Shibley, S. W.	"	pt A	T	1
957	Tinkler, Wm	4	pt 23	H	1
960	Tomlinson, G. W.	S Centre	74	T	1
961	Tomlinson, C. S.	S Centre	74	T	1
934	Thompson, Dr. A.	N Front	pt W	F	1
J 964	Taylor, Henry	S Front	16	T	1

## POLLING SUB-DIVISION NO. 3.

<i>No. on Roll.</i>	<i>NAME.</i>	<i>Street or Concesston.</i>	<i>No. of Lot or Part Lot.</i>	<i>Other Description</i>	<i>P.O</i>
979.....	Vary D. W.....	N Front.....	8.....	F.....	1
978.....	Vokes, J. T.....	N Front.....	3.....	T.....	1
J 975.....	Vail, W. A.....	N Front.....	pt V.....	T.....	1
J 976.....	Vail, J. B.....	".....	".....	T.....	1
1019.....	Waite, David.....	S North.....	12.....	F.....	1
J1020.....	Waite, Stephen.....	S North.....	12.....	F.....	1
846.....	Wallace, Richard.....	S Front.....	pt U.....	H.....	1
1043.....	Westlake, F. G.....	N Front.....	E pt V.....	T.....	1
1041.....	Woodbury, Edward.....	S Front.....	24.....	T.....	1
1039.....	Wright, James.....	S Front.....	T.....	F.....	1
666.....	Williams, M.....	S Front.....	14, 17, 18.....	F.....	1
1022.....	Walker, Reuben.....	N Centre.....	pt 44.....	H.....	1
1038.....	Worthington, A I.....	S Front.....	pt S.....	T.....	1

## PART II.—Persons entitled to vote at Municipal Elections ONLY.

29.....	Auld, Euphemia.....	N Front.....	pt 5.....	F.....	1
372.....	Collins, Ellen.....	N Front.....	pt 7.....	F.....	1
197.....	Cameron, Catherine.....	".....	15.....	T.....	1
197.....	" Annie.....	".....	".....	F.....	1
197.....	" Jessie.....	".....	".....	F.....	1
197.....	" Kate.....	".....	".....	F.....	1
197.....	" Bella.....	".....	".....	F.....	1
316.....	Fletcher, Clarine.....	".....	pt V.....	F.....	1
357.....	Gale, Mary.....	S Centre.....	72.....	H.....	1
371.....	Geddes, Martha.....	N Centre.....	pt 42.....	F.....	1
442.....	Howard, Anna.....	S Centre.....	pt 79.....	F.....	1
458.....	Hawley, Mary.....	S Front.....	pt 15.....	T.....	1
432.....	Herbert, Elizabeth.....	N ".....	pt 7.....	T.....	1
513.....	Knight, Mary.....	S Front.....	pt 22.....	T.....	1
689.....	Mills, Isabella.....	S Front.....	pt S.....	T.....	1
702.....	McIntyre, Maggie.....	N Front.....	pt V.....	T.....	1
719.....	Manners, Mary.....	S Front.....	pt 14.....	H.....	1
834.....	Rose, Wilhelmina.....	N Centre.....	48, 49.....	F.....	1
1040.....	Willis, Maggie.....	".....	pt V.....	H.....	1

POLLING SUB-DIVISION NO. 4.

15

No. on Roll.	NAME.	Street or Concession.	No. of Lot or Part Lot.	Other Description.	R. O.
--------------	-------	-----------------------	-------------------------	--------------------	-------

POLLING SUB-DIVISION NO. 4,

Comprising all that part of the Town lying west of Caradoc Street, south of Centre Street to Frank Street, thence South of James Street and East of Richmond and McKellar Streets. Polling Place at the High School.

	98.....	Anderson, W. J.....	S and K sy.....	W hf 107.....	H.....	1
J	23.....	Armstrong, T. L.....	S James.....	U and E hf V.....	F.....	1
J	933.....	Alison, P. J.....	S and K sy.....	67, 68.....	F.....	1
	404.....	Alison, Brisbane H.....	Reid's sy.....	S R R, pt 14.....	F.....	1
J	14.....	Althouse, M. W.....	N Metcalfe.....	202, 203.....	T.....	1
	18.....	Alexander, Joseph.....	S Metcalfe.....	18.....	H.....	1
	26.....	Alexander, James.....	S Front.....	pt S.....	T.....	1
	35.....	Ash, John.....	S James.....	200, 202.....	F.....	1
	541.....	Auld, Adam.....	S Albert.....	23.....	F.....	1
J	54.....	Brown, J. W.....	S and K sy.....	60.....	F.....	1
J	50.....	Barron, Edwin.....	S and K sy.....	69, 70.....	H.....	1
	79.....	Bicknell, Benjamin.....	S Albert.....	31.....	H.....	1
J	95.....	Bishop, Wm.....	N James.....	109, 110, 111.....	T.....	1
	113.....	Billington, George.....	S and K sy.....	38.....	T.....	1
	55.....	Buck, Wm.....	S and K sy.....	139, 140.....	F.....	14
J	49.....	Ballantyne, R. A.....	S and K sy.....	17.....	F.....	1
J	53.....	Barclay, Wm.....	S and K sy.....	59.....	T.....	1
	132.....	Brown, John.....	Reid's sy.....	pt 15.....	F.....	1
J	40.....	Brown, John T.....	E McKellar.....	11, 12, 13.....	F.....	1
	46.....	Brown, Alfred.....	Reid sy.....	5.....	T.....	1
	47.....	Brown, John.....	S and K sy.....	pt 14.....	F.....	1
J	97.....	Black, J. V.....	S James.....	200, 202.....	F.....	1
	100.....	Berdan, John.....	S Centre.....	pt 79.....	T.....	1
	392.....	Bennett, Arthur.....	S & K sy.....	6, 7.....	F.....	5
	636.....	Bell, Richard.....	S Albert.....	32.....	F.....	1
J	52.....	Brown, James.....	S & K sy.....	65, 66.....	F.....	1
J	45.....	Blackwell, John.....	Reid sy S R R.....	pt 5.....	T.....	1
J	137.....	Campbell, James M.....	S and K sy.....	36, 37.....	F.....	1
	138.....	Campbell, Thomas.....	S and K sy.....	141.....	F.....	1
	133.....	Cutler, Jacob.....	Reid sy, S R R.....	pt 6.....	F.....	1
J	150.....	Cawthorpe, Thomas.....	S Metcalfe.....	1, 3.....	F.....	1
	658.....	Currie, Wm.....	Reid sy, S R R.....	S hf 8.....	F.....	1
J	140.....	Cooper, Charles.....	S and K sy.....	132.....	H.....	1
	165.....	Cowan, Thomas.....	S Centre.....	pt 79, 80.....	F.....	1
	135.....	Drone, Wm.....	S Albert.....	34, 35.....	F.....	1
	527.....	Carruthers, Andrew.....	S and K sy.....	90, 91.....	F.....	1
J	139.....	Campbell, James.....	S and K sy.....	127, 128.....	F.....	1
	132.....	Carson, S. W.....	Reid sy.....	pt 14.....	T.....	1

## POLLING SUB-DIVISION NO. 4.

No. on Roll.	NAME.	Street or Concession.	No. of Lot or Part Lot.	Other Description	P.O.
134.....	Champion, F. C	"	N pt 8.	T.....	1
192.....	Carruthers, A	S Metcalfe.	pt 1.	T.....	1
J 227.....	Donley, Patrick	{ E McKellar	4, 5.	F.....	1
J 228.....	Donley, James	{ Beattie sy	23 to 27	F.....	1
J 788.....	Dudley, George	Reid sy, S R R.	pt 6, 5.	F.....	1
J 226.....	Dell, B F	S and K sy	113 to 117	F.....	1
598.....	Donley, Patrick	"	96.	F.....	1
50.....	Elliott, J. B.	S and K sy	69, 70.	F.....	1
274.....	Elliott, J B.	N James	N hf 9, 10.	F.....	1
J 295.....	Farrow, Robt	S and K sy	61.	F.....	1
296.....	Fisher, James	"	pt 107.	T.....	1
304.....	Frank, Sol. non	J and W sy	26.	H.....	1
293.....	Folks, Francis	Reid sy	pt 5.	F.....	1
305.....	Fry, George	J and W sy	W hf 15.	F.....	1
300.....	Frank, Charles G	Beattie sy	6 to 17, 22, 25.	F.....	1
J 342.....	Getty, Joseph	S James	pt T.	T.....	1
592.....	Grant, Thomas	Reid sy	pt 10.	T.....	1
J 360.....	Gough, James	S James	pt 200, 202.	T.....	1
J 338.....	Gordon, Thos	S and K sy	62, 64.	F.....	1
J 340.....	Gooderham, Thomas	11 Kittredge sy	pt 72.	F.....	1
J 389.....	Hart, John	Reid sy	pt 6.	T.....	1
J 413.....	Harrison, Edward	S Metcalfe	57.	T.....	1
396.....	Hope, George	S and K sy	74.	H.....	1
J 401.....	Hardy, James	10 pt 11.	6 8	F.....	1
J 414.....	Hill, Benjamin	S Metcalfe	pt 57.	T.....	1
J 418.....	Hartson, Charles H	N Metcalfe	S T	T.....	1
J 419.....	Hodgkinson, Wm	"	pt V and 204.	T.....	1
439.....	Hoskin, F. T.	"	pt V and 204.	T.....	1
444.....	Hoskin, G. B.	{ N Centre	pt 109.	T.....	1
1024.....	Huggins, John	N James	E hf V.	F.....	1
615.....	Hickson, John	S and K sy	144	F.....	1
J 420.....	Hull, W. W.	5.	22.	F.....	1
397.....	Harrison, Thomas	S and K sy	103.	F.....	1
391.....	Harnett, William	S and K sy	89	F.....	1
J 394.....	Hurd, C. N.	B, McK and McR sy	6, 7.	F.....	1

POLLING SUB-DIVISION NO. 4.

No. on Roll.	NAME.	Street or Concession.	No. of Lot or Part Lot.	Other Description.	P.O.
J 399	Harris, James	S and K sy	124, 125	F	1
J 398	Hill, Thomas	S and K sy	142	F	1
J 456	Hambly, John	J and K sy, S R R	32, 33	F	1
J 393	Hardy, Wm	N James	S and T	H	1
J 418	Haldane, Robert	S James	E hf T	F	1
J 468	Henry, Richard	J and W sy	16	F	1
J 463	Jeffery, David	C, McK and McR sy	3, 4, 5	H	1
465	Johnson, H. D	"	8, 9, 10	F	1
464	Jarvis, Edward	Reid sy, S R R	14	T	1
468	Jackson, Thos	J and W sy	16	H	1
502	Knight, Benjamin	S and K sy	77	F	1
J 509	Kirkpatrick, J. J	McK sy B	9, 10	T	1
514	Kittredge, A. H.	con 10	pt 12	F	1
J 528	Large, William	D, McK and McR sy	3, 4, 5, 8, 9, 10	F	1
554	Laird, W. P.	S Centre	V and 81	H	1
J 562	Lenfestey, John, jr	N James	pt S and T	F	1
527	Lea, William	S and K sy	90, 91	T	1
510	Lamont, David	S Albert	29	T	1
J 598	McGowan, Robert	S and K sy	79	H	1
603	McEwen, Robert	"	78	H	1
605	McBeth, George	"	62	F	1
J 296	McNeice, Thomas	"	E hf 107, 104, 5	F	1
615	McPhee, Daniel	"	143, 144	T	1
658	McPhee, Alexander	Reid sy	S hf 8	T	1
721	Macadam, Rev. T	S Albert	26, 27	O	1
J 692	Morrison, Peter	S and K sy	153, 154	F	1
18	McTaggart, Jane	S Metcalfe	57	F	1
140	McKean, Sarah	S and K sy	132	F	1
554	McKellar, Adeline	S Centre	V 81	F	1
597	Main, Henry	Reid sy S R R	4	H	1
595	McIntyre, John	"	3	F	1
541	Murray, John W	"	pt 15	F	1
661	Mitchell, John	S Centre	pt T	F	1
J 670	McBride, Samuel	N Metcalfe	E hf U	H	1
671	McBride, John	"	S	F	1
J 635	Moody, Wilham	S Albert	33	F	1
J 601	McKeigan, Alexander	S and K sy	18, 20	T	1
597	McIntyre, Hugh	Reid sy, S R R	4	F	10
592	Monkman, John	Reid sy	S hf 10	T	1
609	McIntyre, Peter	Kittredge sy	10 pt 11, 3, 6	F	1



No. on Roll.	NAME.	Street or Concession.	No. of Lot or Part Lot.	Other Description	P.O.
J 727	Nicholson, Robert	N Metcalfe	54, 55, 56	F	1
732	Nicholls, Thomas	N James	pt V	F	1
389	Nicholls, Edward	Reid sy, S R R	pt 6	F	1
J 603	Napper, Charles	S and K sy	78	F	1
724	Northcott, Joseph	Reid sy	N E, pt 6	H	1
J 743	O'Dwyer, Edward	C, McK and McR sy	1 and 2	F	1
J 747	Ogden, John	S Metcalfe	2	F	1
J 753	Ogden, W. A.	S Albert	28	F	1
752	Orr, James	S Centre	S	H	1
9	Orr, Rowland	S and K sy	w hf 107	F	1
J	Orvis, Myron	S and K sy	71	H	1
765	Park, James	S and K sy	34	F	1
767	Petch, James	"	76	F	1
J 782	Parsons, Edwin	N James	109, 110	H	1
795	Pincombe, Richard	Reid sy, S R R	mill	T	1
98	Prangle, George	N James	109, 110, 111	F	?
765	Park, Edward	S and K sy	34	F	1
J 509	Rothwell, Thomas	McK and McR sy, B	9, 10	F	1
811	Robinson, John	S and K sy	100	F	1
J 813	Robinson, James	"	92, 99	F	1
852	Ross, G. W., M.P.P.	"	150, 151, 152	F	1
871	Rapley, Manfred	McK and McR sy, D	1, 2	F	1
J 844	Reid, Alexander	S James	197, 198, 199	F	4
J 808	Robinson, John	} W Caradoc	52	T	1
J 809	Robinson, James				
J 810	Robinson, Albert				
J 817	Richardson, Robert F	S Albert	30	T	1
J 981	Richardson, Thomas	J and W sy	17 to 21	F	1
8	Rapley, Henry	N James	U	T	1
871	Stoddard, Thomas	D, McK and McR sy	1, 2	T	1
J 933	Small, Joseph S	S and K sy	67, 68	T	1
883	Sessions, William	E Richmond	15	F	1
764	Stoops, William	S and K sy	93	F	1
309	Stokoe, Bartholomew	N Metcalfe	pt U	F	1
360	Seaton, John	S James	200, 202	F	1
45	Sells, David	Reid sy	pt 5	F	1
463	Shepherd, William	S and K sy	49	F	1
J 877	Stevens, Ambrose	E McKellar	11, 12, 13	H	1
878	Stevens, B. F.	"	"	F	1
878	Stevens, John W.	"	"	F	1
893	Seymour, Henry	S Metcalfe	pt 56	H	1

POLLING SUB-DIVISION NO. 4.

19

No. on Roll.	NAME.	Street or Concession.	No. of Lot or Part Lot.	Other Description.	P.O.
943	Topp, Abraham	S and K sy	27, 28	F	1
945	Tomlinson, C. S.	Kittredge sy	65, 66	F	1
947	Thompson, John	S and K sy	133	F	1
J 949	Trelfa, William	"	3 to 5, 11, 14	H	1
J 14	Thompson, Archibald	N Metcalfe	202, 243	F	1
944	Thody, Elijah	S and K sy	25	H	1
946	Tomliuson, Wm.	Beattie sy	32	H	1
980	Van Staden, W. G.	J and W sy	17 to 21	F	1
1032	Woods, Charles	N Metcalfe	105, 106	F	1
1000	Wright, George	S Metcalfe	E pt 3	T	1
J 1024	Westover, Alexander	N James	V	T	1
990	Wallace, William	Reid sy	S hf 7	T	1
J 1010	Wilson, Joseph	S Albert	37	T	1
1032	Woods, James	S James	200, 202	F	1
J 744	Woods, Charles	S and K sy	72	F	1
J 993	Webb, Joseph	"	74	H	1
1038	Worthington, A. I.	"	94	F	1
99	Winters, Thomas	N James	pt 109	F	1
1008	Williams, Roger	S and K sy	39	F	1
987	Walton, John	Reid sy, S R R.	pt 14	F	1
985	Wiles, Thomas	"	pt 6	H	1
J 1001	Wray, William	J and W sy	22, 25	H	1
1003	Weeks, John	"	52	F	1
1004	Williams, Michael	"	74, 75	F	1
1026	Whitehead, J. P.	S James	pt T	H	1
1033	Walker, James	W pt 11	59, 60	F	1
J 396	Zavitz, Thomas	S and K sy	74	F	1

**PART II.—Persons entitled to vote at Municipal Elections ONLY.**

52	Buttery, Mary	S and K sy	133, 140	T	1
99	Bradley, Mary	N James	109, 110 pt	T	1
135	Crone, Ann	S & K sy	79	H	1
164	Cowan, Alice	S Centre	79, 80	F	1
990	Clark, Ann	Reid sy S R R.	7	F	1
46	Degraw, Eliza	Reid sy	pt 13	F	1

## POLLING SUB-DIVISION NO. 4.

<i>No. on Roll.</i>	<i>NAME.</i>	<i>Street or Concession.</i>	<i>No. of Lot or Part Lot.</i>	<i>Other Description</i>	<i>P.O.</i>
294.....	Frank, Caroline.....	S and K sy.....	98.....	F.....	1
309.....	Finlay, Ann.....	N Metcalfe.....	E N W.....	T.....	1
395.....	Howe, Kate.....	W K and McKellar sy.....	67.....	T.....	1
541.....	Livingston, Mrs. B. A.....	S Albert.....	22.....	T.....	1
593.....	McPherson, Sarah.....	Reid sy.....	N hf 10.....	T.....	1
594.....	Myles, Mrs. W.....	".....	N hf 7.....	T.....	1
599.....	McDougal, Sarah.....	S and K sy.....	S hf 10.....	F.....	1
603.....	Mocre, Ann.....	".....	24.....	F.....	1
607.....	McDougal, Nancy.....	".....	102.....	F.....	1
608.....	McConechy, Jane.....	".....	120, 121.....	F.....	1
636.....	McNeil, Nancy.....	S Albert.....	32.....	H.....	1
646.....	McTaggart, Jane.....	S Metcalfe.....	57.....	F.....	1
669.....	Moore, Mary.....	S James.....	pt T.....	H.....	1
778.....	Pegley, Matilda.....	Reid sy. S RR.....	9, 10.....	F.....	1
802.....	Rowland, Mary.....	S and K sy.....	106.....	F.....	1
817.....	Richardson, Fanny.....	S Albert.....	30.....	F.....	1
873.....	Street, Eliza.....	S and K sy.....	135.....	F.....	1
911.....	Steinhoff, Sarah.....	N James.....	S T.....	H.....	1
1001.....	Wells, Mary.....	J and W sy.....	10, 11.....	H.....	1
53.....	Williams, Jane.....	S and K sy.....	59.....	F.....	1

## POLLING SUB-DIVISION NO. 5,

Comprising all that part of the Town lying east of Caradoc street and north of Metcalfe street. Polling place at Colborne street school-house.

J 17.....	Ayre, Joshua.....	4.....	23.....	T.....	1
13.....	Andrews, G. W. Rev.....	A and K sy.....	64.....	T.....	1
J 158.....	Bailie, Hugh.....	A and K sy.....	68.....	F.....	1
J 179.....	Bond, John.....	E Caradoc.....	pt 10, 11.....	F.....	1
J 66.....	Barnes, John.....	E Caradoc.....	pt 4, 5.....	F.....	1
J 90.....	Black, A. N. C.....	con 4.....	29, 30, 31.....	F.....	1
J 83.....	Burkholder, Henry.....	A and K sy.....	62.....	H.....	1

POLLING SUB-DIVISION NO. 5.

21

No. on Roll.	NAME.	Street or Concession.	No. of Lot or Part Lot.	Other Description.	P.O.
J 105	Banghart, John	S Front	O	F	1
J 110	Bixel, Cyrus	N Front	pt S	H	1
J 107	Banks, Thomas	S Front	H	H	1
358	Brown, John	E Caradoc	pt 1	F	1
191	Bishop, Wm	W Colborne	N hf 3	F	1
J 77	Best, Jacob	A and K sy	pt 38, 39	F	1
J 74	Banghart, Jas	A and K sy	38, 39, 40	F	1
158	Campbell, D. B	A and K sy	64	T	1
215	Cameron, John	E Head	S, 9, 10	T	1
174	Crooks, Thomas	4	pt 22	F	1
190	Cambell, Ftulay F.	M S Front		T	1
180	Cutler, Wm	E Colborne	pt 4	T	1
155	Clarke, Samuel	A and K sy	53	H	1
J 157	Collins, Thomas	A and K sy	50	H	1
J 178	Coy, Richard	E Caradoc	pt 9	F	1
183	Cox, James	con 4	pt 24	F	1
209	Craig, F. J.	} W Head	1, 2, 3	F	1
J 210	Craig, W. E.				
J 211	Craig, J. G.	} N Front	E hf K	F	1
187	Carson, Samuel				
191	Craik, Alex	S Front	W pt N	F	1
192	Carruthers, A	N Front	rear G, H, I	F	1
J 354	Callaghan, John O.	S Front	pt R	F	8
150	Clark, Henry	A and K sy	43	T	1
J 179	Cornell, James	E Caradoc	pt 10	H	1
J 485	Corkindale, L.	E Colborne	8	H	1
417	Cameron, Allan	A and K sy	71	F	1
J 185	Dell, Solomon	E Colborne	8, 9	F	1
J 228	Davidson, R.	A and K sy	33, 34	F	1
J 215	Dumbrell, Richard	N Metcalfe	8, 9, 10	F	1
J 244	Daniels, Wm	E Head	N hf 6	F	1
924	Dewar, W.	N Front	D, E, F	F	1
251	Durand, James	W Colborne	pts N and O	F	4
J 550	Durrant, George	S Front	pt Q	T	1
J 275	Evely, Wm	N Front	W hf K	F	1
J 627	Emmons, Robert	A and K sy	45, 46	F	1
273	Evans, David	} S Front	pt Q	H	1
276	Evans, F. F.				
277	Evans, F. L. E.				
J 281	English, John				
323	Frank, John	S Front	N pt K	T	1
J 316	Frank, F. W.	E Caradoc	S hf 8 and 9	F	1

<i>No. on Roll.</i>	<i>NAME.</i>	<i>Street or Concession.</i>	<i>No. of Lot or Part Lot.</i>	<i>Other Description</i>	<i>P.O</i>
J 308.....	Fitzpatrick, James.....	W Arthur.....	3.....	F.....	1
J 318.....	Fitzpatrick, Peter.....	W Colborne.....	6.....	F.....	1
J 320.....	Fitzpatrick, Thomas.....	N & S Front.....	R. J.....	H.....	1
J 321.....	Feron, Rev. P. H.....	N Front.....	D, E, F.....	O.....	1
J 324.....	Foe, Amos H.....	S Front.....	pt R.....	T.....	1
347.....	Gare, George.....	A and K sy.....	52.....	H.....	1
348.....	Gill, Aaron.....	A and K sy.....	44.....	H.....	1
J 352.....	Galloway, James.....	con 4.....	pt 22.....	F.....	1
J 358.....	Gordon, George.....	E Caradoc.....	pt 1.....	F.....	1
J 349.....	Goodison, John.....	A and K sy.....	65, 66.....	T.....	1
354.....	Geary, Wm. jr.....	S Front.....	N.....	T.....	1
364.....	Geary, Wm.....	N Front.....	pt L, M.....	T.....	1
435.....	Heard, John.....	E Caradoc.....	7.....	F.....	1
J 434.....	Hoare, W. W.....	E Caradoc.....	pts 6, 7.....	H.....	1
444.....	Hill, Rev. A. C.....	W Head.....	church.....	H.....	1
J 437.....	Hill, George S.....	W Colborne, N Burns.....	3 plot.....	H.....	1
890.....	Humphries, S.....	W Arthur.....	3, 4, 5.....	F.....	1
417.....	Hamblyn, Henry.....	A and K sy.....	71.....	T.....	1
J 443.....	Haggarty, Edward.....	W Head.....	pts 2, 3.....	T.....	1
447.....	Hill, Thomas.....	N Front.....	pt 3.....	T.....	1
539.....	Hull, Wesley.....	4.....	pt 22.....	F.....	1
J 489.....	Irvine, Thomas.....	N Front.....	S.....	F.....	1
J 477.....	Johnston, P. H.....	W Colborne.....	2.....	F.....	1
574.....	Kittredge, A. H.....	A and K sy.....	22, 23.....	F.....	1
J 510.....	Kerr, J. B.....	E Colborne.....	5.....	T.....	1
J 539.....	Lawson, Frederick.....	con 4.....	pt 22.....	F.....	1
J 443.....	Lindsay, James.....	E Head.....	pts 2, 3.....	F.....	1
551.....	Laing, Rev. D.....	E Caradoc.....	3.....	T.....	1
J 556.....	Loney, James.....	S Front.....	pt P.....	T.....	1
J 627.....	McLeod, James.....	W Arthur.....	4, 5, 46.....	H.....	1
J 628.....	Merrills, Thomas.....	A and K sy.....	6, 9, 70.....	F.....	1
J 630.....	McCormick, John.....	A and K sy.....	72.....	H.....	1
J 644.....	Mallon, Thomas.....	N Metcalfe.....	9.....	H.....	1
570.....	Mann, Shadrach.....	E Colborne.....	N hf 5.....	F.....	1

<i>No. on Roll.</i>	<i>NAME.</i>	<i>Street or Concession.</i>	<i>No. of Lct or Part Lot.</i>	<i>Other Description.</i>	<i>P.O.</i>
681	McCallum, Daniel	S Front	W hf S	T	1
684	McMillen, Josiah	S Front	E hf O	F	1
688	McGarvey, John	N Front	P N O	F	1
277	McCull, Hugh	S Front	P and Q	T	1
107	Merrills, Thomas	S Front	H	F	1
687	Martyn, J. T	A and K sy	5, 12	F	1
J 629	Murdock, Wm.	A and K sy	70	T	1
J 672	Murdock, John	E Head	3, 4	T	1
682	McNeil, John	N Front	W pt L	F	1
180	Munn, Kiziah	E Colborne	pt 4	F	1
J 650	Munro, David W.	4	pt 22	F	1
644	Malcolm, John	N Metcalfe	9	F	4
664	Muldon, John S.	E Caradoc	N hf 8	H	1
674	Morrow, Frank	E Head	1, 2	F	1
683	McLeod, James	S Front	pt A	H	1
686	McGruther, Robert	"	pt R	T	1
J 961	Murdock, William	N Front	rear of S	F	1
J 753	Ogden, Henry	E Colborne	6	F	1
756	O'Keefe, Patrick	E Caradoc	2	F	1
J 790	Pike, Charles	N Front	P and Q	F	1
J 760	Pool, Irving	E Colborne	1, 2, 3	F	1
795	Pinecombe, R.	con 4	23, 24	F	1
J 781	Plaxton, Albert	E Caradoc	10, 11	T	1
J 789	Pike, Wm. H.	S Front	Q	T	1
772	Player, H. J.	A and K sy	55, 56	H	1
J 780	Pool, Albert E.	E Caradoc	pt 1	H	1
832	Rundle, Wm	E Colborne	6 and 7	F	1
824	Richardson, L. R.	con 4	pt 23	F	1
J 825	Richardson, H. T.	"	pt 23	F	1
J 583	Richardson, William	S Front	A, B	F	1
938	Rowles, William	N Front	pt 1	F	1
J 830	Roach, Tunis	E Caradoc	10	H	1
157	Saxon, John	A and K sy	50	F	1
888	Sewell, Samuel	A and K sy	64	T	1
J 889	Smith, William H.	W Arthur	E hf 6	T	1
J 905	Sifton, Charles G.	"	4	pt 22	F
858	Shepherd, George	4	pt 24	F	1
J 950	Sickles, John	A and K sy	47, 48, 49	F	1
J 904	Shotwell, J. B.	"	4	pt 22	F
J 913	Simpson, William	E Colborne	pt 1	H	1
J 925	Statham, T. J.	S Front	pt P	T	1
926	Statham, Enoch	"	pt P	T	1
250	Seaton, John	"	pt Q	F	1
J 83	Statham, Silas	A and K sy	62	T	1
927	Spurr, L. V.	N Front	E pt P	T	1

<i>No. on Roll.</i>	<i>NAME.</i>	<i>Street or Concession.</i>	<i>No. of Lot or Part Lot.</i>	<i>Other Description</i>	<i>P.O.</i>
686.....	Seaton, John.....	E Caradoc.....	2.....	T.....	1
111.....	Smith, Emily.....	N Front.....	Rear of 5.....	F.....	1
853.....	Scatherd, E. W.....	N Front.....	pt S.....	T.....	1
890.....	Snyder, Andrew.....	W Arthur.....	3, 4, 5.....	H.....	1
891.....	Smith, G. W.....	N Metcalfe.....	10, 11.....	H.....	1
J 914.....	Sweeney, James.....	E Head.....	4, 5.....	H.....	1
J 916.....	Sickles, Edward.....	W Head.....	4.....	H.....	1
934.....	Springs, L. H.....	W Colborne.....	N 6.....	H.....	1
J 953.....	Thompson, John R.....	4.....	pt 22.....	F.....	1
J 951.....	Touzeau, Thomas.....	A and K sy.....	48, 49.....	T.....	1
956.....	Thompson, Andrew.....	con 4.....	pt 23.....	F.....	1
J 959.....	Thompson, Wm.....	E Caradoc.....	10.....	F.....	1
950.....	Tanton, John.....	A and K sy.....	5.....	H.....	1
J 974.....	Vrooman, David.....	W Colborne.....	7.....	F.....	1
J1023.....	Wilkinson, Isaac.....	W Arthur.....	7 and 8.....	F.....	1
J1027.....	Wilson, George.....	E Head.....	pt 3, 4.....	H.....	1
J1008.....	Williams, Roger.....	A and K sy.....	E of 67.....	F.....	1
1057.....	Winlow, J. B.....	W Colborne.....	4.....	F.....	1
672.....	Walsh, Patrick.....	S Front.....	W hf J.....	F.....	1
1039.....	Wright, James.....	N Front.....	G, H, I.....	F.....	1
1035.....	Wright, Walter.....	".....	pt 8.....	T.....	1
J1028.....	Wilton, John.....	E Colborne.....	5.....	F.....	1
J1009.....	Walton, George.....	N Metcalfe.....	10.....	T.....	1
J 13.....	Williams, Roger.....	A and K sy.....	64.....	F.....	1
J1029.....	Watkinson, W. J.....	E Head.....	S hf 6.....	T.....	1
1008.....	Wetherell, J. E.....	A and K sy.....	pt 67.....	H.....	1
1033.....	Wright, Thomas.....	N Front.....	pt J.....	H.....	1
J1047.....	Zavitz, David.....	A and K sy.....	63.....	F.....	1
J1050.....	Zavitz, Thomas.....	4.....	N E qr 22.....	F.....	1
J1049.....	Zavitz, Edward.....	A and K sy.....	21, 22.....	F.....	1

**PART II.—Persons entitled to vote at Municipal Elections ONLY.**

186.....	Crosby, Elizabeth.....	S Front.....	pt L.....	F.....	1
189.....	Campbell, Mary.....	".....	M.....	F.....	1
830.....	Collins, Mrs. E.....	E Caradoc.....	10.....	F.....	1
772.....	Hardy, Mrs. R. C.....	A and K sy.....	55, 56.....	F.....	1

POLLING SUB-DIVISION NO. 5.

25

No. on Roll.	NAME.	Street or Concession.	No. of Lot or Part Lot.	Other Description.	P.O.
625.....	Moore, Druscilla.....	N Metcalfe.....	9.....	F.....	1
652.....	McGugan, Ann.....	4 pt 22.....	3, 4.....	F.....	1
653.....	Matthews, Jane.....	4.....	pt 22.....	F.....	1
663.....	McCabe, Emma.....	E Caradoc.....	4.....	F.....	1
663.....	McCabe, Emma.....	E Caradoc.....	pt 4.....	H.....	1
827.....	Raison, Mrs. E.....	N North.....	15.....	F.....	1
1034.....	Worsfold, Maria.....	S Front.....	pt L.....	F.....	1

POLLING SUB-DIVISION NO. 6,

Comprising all that part of the Town lying east of Caradoc street and south of Metcalfe street. Polling place at Caradoc street school-house.

1.....	Althouse, A. E.....	E Ellor.....	S W pt 3.....	F.....	1
6.....	Arscott, George.....	S Henry.....	7.....	F.....	1
J 4.....	Argue, Robert.....	S English.....	7.....	H.....	1
7.....	Anderson, James.....	E Caradoc.....	4, English sy.....	F.....	1
5.....	Adams, John S.....	N English.....	E hf 8.....	T.....	1
2.....	Ament, Augustine.....	S English.....	W hf 8.....	T.....	1
12.....	Arlair, Huga.....	S Concord.....	12.....	H.....	1
J 38.....	Bravender, George.....	Blackburn sy.....	24.....	F.....	1
J 42.....	Black, Archibald.....	E Ellor.....	6.....	F.....	1
40.....	Barron, Isaac.....	Blackburn sy.....	15.....	F.....	1
J 96.....	Barnes, John.....	W Metcalfe.....	pt 2.....	F.....	1
J 39.....	Berdan, John.....	Blackburn sy.....	13, 14.....	F.....	1
37.....	Bradt, Sylvester.....	".....	31, 32.....	T.....	1
J 36.....	Brown, John.....	N Bella.....	S hf 27, 28.....	F.....	1
71.....	Bowlon, Isaac A.....	Blackburn sy.....	2.....	F.....	1
39.....	Brock, Thomas.....	Blackburn sy.....	13, 14.....	H.....	1
48.....	Booker, John.....	Munroe's sy.....	9, 10.....	T.....	1
71.....	Booker, John.....	Blackburn sy.....	2.....	H.....	1
J 72.....	Bond, John.....	".....	5.....	F.....	1
J 73.....	Berdan, John.....	".....	6.....	F.....	1
J 659.....	Ballantue, Robert.....	W Ellor.....	N hf 20.....	F.....	1
J 122.....	Cooper, William.....	E Ellor.....	pt 9.....	F.....	1
J 125.....	Condon, Thomas.....	W Ellor.....	11, 12.....	F.....	1
J 121.....	Cockburn, Alex.....	Blackburn sy.....	27.....	H.....	1
J 123.....	Calcut, Caester.....	W Ellor.....	18.....	H.....	1



## POLLING SUB-DIVISION NO. 6.

<i>No. on Roll.</i>	<i>NAME.</i>	<i>Street or Concession.</i>	<i>No. of Lot or Part Lot.</i>	<i>Other Description</i>	<i>P.O</i>
388.....	Carroll, James.....	S English.....	14, 15.....	F.....	1
J 131.....	Campbell, Wm. J.....	10.....	pt 13.....	T.....	1
127.....	Collins, Wm.....	Blackburn sy.....	24.....	T.....	1
194.....	Clark, W. G.....	".....	1.....	F.....	1
124.....	Collins, Isaac.....	".....	16.....	T.....	1
128.....	Cooper, Robert.....	N English.....	E hf 11.....	T.....	1
129.....	Calkins, John.....	".....	14.....	F.....	1
131.....	Cornell, James.....	".....	pt 1.....	T.....	1
182.....	Cummings, Wm.....	N Bella.....	27, 28.....	H.....	1
182.....	Campbell, Malcolm.....	".....	".....	F.....	1
252.....	Dyas, W. J.....	E Caradoc.....	12.....	F.....	1
229.....	Donley, Patrick.....	N English.....	pt 6.....	F.....	1
947.....	Drew, James.....	S English.....	W hf 8.....	F.....	1
863.....	Duncan, James.....	10.....	pt 13.....	F.....	1
2.....	Drew, James.....	S English.....	W hf 8.....	F.....	1
223.....	Douglas, Thomas.....	Con 10.....	pt 12.....	F.....	1
224.....	Deo, Daniel.....	N English.....	pt 27.....	F.....	1
J 282.....	Englsh, J. H.....	Con. 10.....	pt 12.....	F.....	1
253.....	Englsh, J.....	E Caradoc.....	5 and 6.....	F.....	1
815.....	Ellis, John.....	W Blackburn sy.....	Plot.....	F.....	1
292.....	Ferguson, James.....	N Henry.....	14.....	F.....	1
J 291.....	Fawcett, Charles.....	S Canaan & E Elm.....	26, 25.....	H.....	1
J 301.....	Fawcett, W. F.....	S Canaan.....	19 to 20.....	F.....	1
J 260.....	Fortner, Lewis.....	Blackburn sy.....	9, 10.....	F.....	1
J 289.....	Fortner, George.....	".....	".....	F.....	1
353.....	Gooderham, James.....	S English.....	5.....	H.....	1
J 334.....	Gowrie, John.....	Blackburn sy.....	34, 35.....	F.....	1
J 333.....	Gibson, J. W.....	".....	36, 37, 38.....	F.....	1
J 336.....	Gill, Michael.....	E Ellor.....	1 and 2.....	F.....	1
332.....	Gooderham, Henry.....	Blackburn sy.....	45.....	F.....	1
J 359.....	Gooderham, Ezekiel.....	W Ellor.....	14.....	H.....	1
590.....	Gordon, Robert.....	E Caradoc.....	2.....	F.....	1
J 970.....	Gallivan, Timothy.....	10.....	pt 13.....	F.....	1
J 121.....	Haldane, Robert.....	con 10.....	pt 13.....	F.....	1
387.....	Harris, Adam.....	W Ellor.....	19.....	F.....	1
J 384.....	Hamilton, John.....	Blackburn sy.....	39, 40.....	F.....	1
J 412.....	Hill, W. F.....	N Concord.....	5, 6.....	F.....	1
J 388.....	Hazlit, Jacob.....	S English.....	14, 15.....	T.....	1

POLLING SUB-DIVISION NO. 6.

<i>No. on Roll.</i>	<i>NAME.</i>	<i>Street or Concession.</i>	<i>No. of Lc or Part Lot.</i>	<i>Other Description.</i>	<i>P.O.</i>
J 382	Hambly, John	10	S W qr 13	F	1
J 421	Hill, David	N Concord	8	T	1
522	Hazlitt, J. A.	N English	pt A	F	1
48	Harnett, Wm.	Munn's sy	9, 10	F	1
124	Hughes, Frederick	Blackburn sy	6	F	1
390	Hoskin, George	S Henry	4, 5	F	1
411	Hunter, Robert	S Concord	11	O	1
415	Hill, James	W Blackburn sy		T	1
461	Iles, William	Richardson's Block		H	1
471	" "	S Canaan st	Plot	H	1
J 464	James, Joseph	10	pt 13	F	1
J 462	James, Philip	N Blackburn sy	plot	H	1
582	Jennings, Isaac	W Ellor	15	F	1
J 469	Johnston, W. J.	N Canaan	14, 15	F	1
J 497	Kion, John	N Canaan	pt 60	T	1
353	Kittridge, A. H.	S English	5	F	1
J 517	Lynani, John	E Ellor	10	F	1
519	Lapage, Joseph	"	9	F	1
J 526	Loynes, Samuel	N English	1	F	1
J 524	Loynes, John	"	2	F	1
520	Loynes, J. S.	N and S English	pt A, 2, 3	F	1
J 523	Loynes, James S.	N English	3	F	1
462	Laird, W. P.	Laird's sy	C, D, E, F	F	1
123	Leys, F. B.	Blackburn sy	27	F	1
525	Loynes, John, jr.	N English	pt 1	F	1
J 536	Lloyd, Robert	S Concord	9	T	1
J 537	Lamon, George	N Concord	pt 6 and 1	T	1
520	McLellan, A. B.	N and S English	pt A, 2, 3	F	1
590	McIntosh, William	E Caradoc	2	H	5
577	McKellar, D.	Laird sy	G	T	1
578	McKellar, Alex.	"	"	"	"
586	McWhinney, John	N English	12, 13	F	1
J 583	McLellan, Archy	S English	9, 10	F	1
J 588	Mihell, James	"	pt 12	F	1
J 624	Milner, Edward	N Concord	5 and 6	F	1
626	Mann, William	W Blackburn sy	plot	H	1
708	Moore, W. C.	"	3, 4	F	1
J 589	Moore, George	10	pt 15	T	1

## POLLING SUB-DIVISION NO. 6.

No. on Roll.	NAME.	Street or Concession.	No. of Lot or Part Lot.	Other Description	P.O.
625.....	Mansfield, George.....	S Metcalfe.....	3, 7.....	F.....	1
J 36.....	Moore, Archibald.....	10.....	13.....	F.....	1
J 5.....	Morrow, James.....	N English.....	7, 8.....	F.....	1
J 820.....	Mann, John.....	".....	10.....	F.....	1
J 4.....	McCrimmon, John.....	S English.....	7.....	F.....	1
587.....	McQuade, Henry.....	S Henry.....	11.....	F.....	1
574.....	Moore, James.....	Munn sy.....	7.....	F.....	1
585.....	Murphy, John.....	E Ellor.....	25.....	F.....	1
12.....	Moore, W. C.....	S Concord.....	12.....	F.....	1
576.....	Myles, George.....	Gregory sy B.....	7, 8.....	T.....	1
579.....	Melon, Wm.....	Richardson Block.....	1.....	F.....	12
582.....	Miner, Oliver.....	W Ellor.....	15.....	T.....	1
589.....	McWhimny, James.....	N Henry.....	12, 13.....	F.....	1
J 659.....	McEwen, George.....	W Ellor.....	N hf 20.....	H.....	1
J 730.....	Norris, George.....	N Henry.....	1, 2.....	F.....	1
J 723.....	Newton, John.....	E Ellor.....	13, 14.....	F.....	1
126.....	Nell, Thomas.....	W Ellor.....	18.....	F.....	1
537.....	Nicholson, Henry.....	E Caradoc.....	1 and 6.....	F.....	1
J 761.....	Plank, Francis.....	10.....	pt 12.....	F.....	1
758.....	Plank, Sylvester.....	10.....	pt 13.....	F.....	1
J 763.....	Plank, Samuel.....	Blackburn sy.....	26.....	H.....	1
J 757.....	Plaxton, William.....	Munn sy.....	19 to 27 and 28.....	F.....	1
332.....	Phillips, J. C.....	Blackburn sy.....	45.....	F.....	1
795.....	Pincombe, R.....	10.....	pt 14.....	F.....	1
J 771.....	Price, John.....	S Concord.....	10.....	H.....	1
819.....	Rogers, William.....	N English.....	10.....	T.....	1
820.....	Rogers, Thomas H.....	".....	10.....	T.....	1
J 37.....	Robinson, John.....	Blackburn sy.....	31, 32.....	F.....	1
J 800.....	Robinson, Frank.....	".....	43, 44.....	F.....	1
J 810.....	Richardson, Robert.....	10.....	pt 12.....	F.....	1
J 815.....	Robinson, John.....	W Blackburn sy.....	plot.....	H.....	1
867.....	Smith, Richard.....	S Concord.....	9, 13.....	F.....	1
859.....	Steadman, William.....	Gregory sy.....	1, 2, 3 and pt 4.....	F.....	1
862.....	Sinclair, D. B.....	10.....	pt 13.....	F.....	1
J 864.....	Schram, Levi.....	10.....	pt 13.....	H.....	1
J 865.....	Stonehouse, Robert.....	Blackburn sy.....	33.....	F.....	1
989.....	Sawyer, L. D.....	S English.....	11.....	F.....	14
886.....	Smith, Richard.....	S Concord.....	13.....	F.....	1
J 866.....	Sickels, George.....	10.....	pt 3.....	T.....	1
861.....	Sickels, George W.....	E Ellor.....	13.....	F.....	1
856.....	Scott, James.....	Munn sy.....	13.....	F.....	1
J 860.....	Saulsbury, Charles.....	10.....	pt 14.....	F.....	1

POLLING SUB-DIVISION NO. 6.

29

<i>No. on Roll.</i>	<i>NAME.</i>	<i>Street or Concession.</i>	<i>Lot or Lots.</i>	<i>Other Description.</i>	<i>P.O.</i>
J 857	Scott, William	Munn sy	18, 26	F	1
J 127	Smith, Richard	N English	W hf 7	F	1
867	Smith, W. J	N English	9	H	1
626	Thompson, Alexander	W Blackburn sy	plot	F	1
942	Todd, W. E.	N English	N hf 8	H	1
J 970	Upton, Frank	10	pt 13	H	1
969	Urquhart, George, jr	W Ellor	4	F	1
968	Urquhart, George	"	5, 6	F	1
578	Vail, G. W.	10	pt 12	F	1
1037	Woodward, Frank	Munn sy	12, 16	F	1
J 934	Watson, G. W.	E Ellor	5 and 20	F	1
J 1021	Wilkinson, Reuben	Munn sy	1, 2, 3, 5, 6	F	1
104	Woodbury, Edward	10	pt 13	F	1
415	Woods, Charles	W Blackburn sy	plot	F	1
J 983	Winters, John	10	N hf 15, 14	F	1
986	Windle, James	10	N W qr 13	F	1
J 985	Winterton, John	10	pt 13	F	1
1005	Welch, William	Head Concord st		F	1
1044	Yager, Henry	W Ellor	S hf 19	F	1

## POLLING SUB-DIVISION NO. 6.

No. on Roll.	NAME.	Street or Concession.	No. of Lot or Part Lot.	Other Description	P.O.
--------------	-------	-----------------------	-------------------------	-------------------	------

## PART II.—Persons entitled to vote at Municipal Elections ONLY.

122	Collins, Sarah	E Ellor	pt 9	F	1
153	Clemenig, Mary	N Canaan	16, 17, 18	F	1
154	Corkindale, Janet	W Blackburn sy	Plot	F	1
280	English, Eliza	E Caradoc	5, 6	F	1
864	Fraser, Catherine	10	pt 13	F	1
416	Harrison, Sarah	W Blackburn sy	7	F	1
578	Lamont, Flora	E Ellor	pt 10	F	1
861	Root, Mrs. Daniel	E Ellor	pt 3	F	1

454 of the above named voters are qualified to serve on Juries.

I, J. B. WINLOW, Clerk of the municipality of the town of Strathroy, in the County of Middlesex, do hereby certify that part one of the above list constitutes a correct list for the year 1884 of all persons appearing by the last revised Assessment Roll of the said Municipality to be entitled to vote at Elections for Members of the Legislative Assembly; and that parts one and two constitute a correct list for said year of all persons appearing by the said roll to be entitled to vote at Municipal Elections in said Municipality; and I hereby call upon all electors to examine the said list, and if any omissions or other errors are perceived therein, to take immediate proceedings to have the said errors corrected according to law.

JACOB B. WINLOW,  
Clerk of the Town of Strathroy, Strathroy P O.

Dated this 25th day of August, 1884.

CANCN15Q18 X7V54

OE

