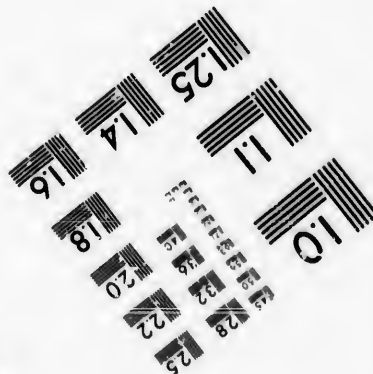
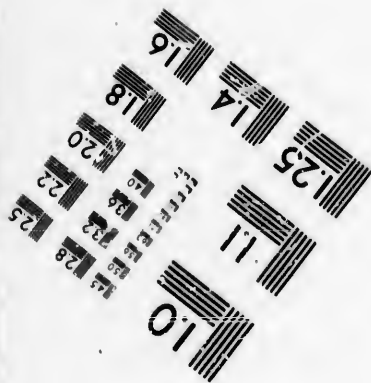
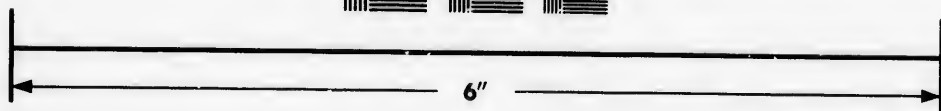
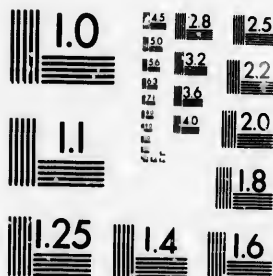


**IMAGE EVALUATION  
TEST TARGET (MT-3)**



**Photographic  
Sciences  
Corporation**

23 WEST MAIN STREET  
WEBSTER, N.Y. 14580  
(716) 872-4503

10  
16  
18  
20  
22  
25  
28

**CIHM/ICMH  
Microfiche  
Series.**

**CIHM/ICMH  
Collection de  
microfiches.**



Canadian Institute for Historical Microreproductions / Institut canadien de microreproductions historiques

10  
11  
12  
13  
14  
15  
16  
17  
18  
19  
20  
21  
22  
23  
24  
25  
26  
27  
28  
29  
30

**© 1986**

Technical and Bibliographic Notes/Notes techniques et bibliographiques

The Institute has attempted to obtain the best original copy available for filming. Features of this copy which may be bibliographically unique, which may alter any of the images in the reproduction, or which may significantly change the usual method of filming, are checked below.

L'Institut a microfilmé le meilleur exemplaire qu'il lui a été possible de se procurer. Les détails de cet exemplaire qui sont peut-être uniques du point de vue bibliographique, qui peuvent modifier une image reproduite, ou qui peuvent exiger une modification dans la méthode normale de filmage sont indiqués ci-dessous.

- |  |  |
|--|--|
| <input checked="" type="checkbox"/> Coloured covers/<br>Couverture de couleur  | <input type="checkbox"/> Coloured pages/<br>Pages de couleur   |
| <input type="checkbox"/> Covers damaged/<br>Couverture endommagée  | <input type="checkbox"/> Pages damaged/<br>Pages endommagées   |
| <input type="checkbox"/> Covers restored and/or laminated/<br>Couverture restaurée et/ou pelliculée  | <input type="checkbox"/> Pages restored and/or laminated/<br>Pages restaurées et/ou pelliculées  |
| <input type="checkbox"/> Cover title missing/<br>Le titre de couverture manque   | <input checked="" type="checkbox"/> Pages discoloured, stained or foxed/<br>Pages décolorées, tachetées ou piquées   |
| <input type="checkbox"/> Coloured maps/<br>Cartes géographiques en couleur   | <input type="checkbox"/> Pages detached/<br>Pages détachées  |
| <input checked="" type="checkbox"/> Coloured ink (i.e. other than blue or black)/<br>Encre de couleur (i.e. autre que bleue ou noire)  | <input checked="" type="checkbox"/> Showthrough/<br>Transparence   |
| <input type="checkbox"/> Coloured plates and/or illustrations/<br>Planches et/ou illustrations en couleur  | <input type="checkbox"/> Quality of print varies/<br>Qualité inégale de l'impression   |
| <input type="checkbox"/> Bound with other material/<br>Relié avec d'autres documents   | <input type="checkbox"/> Includes supplementary material/<br>Comprend du matériel supplémentaire   |
| <input type="checkbox"/> Tight binding may cause shadows or distortion<br>along interior margin/<br>La reliure serrée peut causer de l'ombre ou de la<br>distorsion le long de la marge intérieure   | <input type="checkbox"/> Only edition available/<br>Seule édition disponible   |
| <input type="checkbox"/> Blank leaves added during restoration may<br>appear within the text. Whenever possible, these<br>have been omitted from filming/<br>Il se peut que certaines pages blanches ajoutées<br>lors d'une restauration apparaissent dans le texte,<br>mais, lorsque cela était possible, ces pages n'ont<br>pas été filmées. | <input type="checkbox"/> Pages wholly or partially obscured by errata<br>slips, tissues, etc., have been refilmed to<br>ensure the best possible image/<br>Les pages totalement ou partiellement<br>obscurcies par un feuillet d'errata, une pelure,<br>etc., ont été filmées à nouveau de façon à<br>obtenir la meilleure image possible. |
| <input type="checkbox"/> Additional comments:/<br>Commentaires supplémentaires:  |  |

This item is filmed at the reduction ratio checked below/  
Ce document est filmé au taux de réduction indiqué ci-dessous.

10X	14X	18X	22X	26X	30X
				✓	
12X	16X	20X	24X	28X	32X

The copy filmed here has been reproduced thanks to the generosity of:

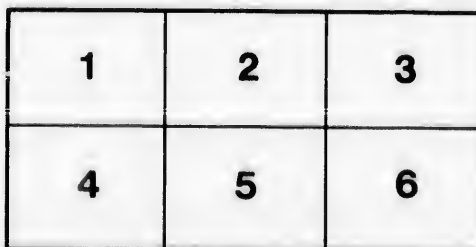
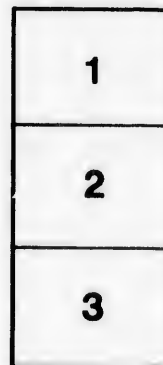
Douglas Library  
Queen's University

The images appearing here are the best quality possible considering the condition and legibility of the original copy and in keeping with the filming contract specifications.

Original copies in printed paper covers are filmed beginning with the front cover and ending on the last page with a printed or illustrated impression, or the back cover when appropriate. All other original copies are filmed beginning on the first page with a printed or illustrated impression, and ending on the last page with a printed or illustrated impression.

The last recorded frame on each microfiche shall contain the symbol  $\rightarrow$  (meaning "CONTINUED"), or the symbol  $\nabla$  (meaning "END"), whichever applies.

Maps, plates, charts, etc., may be filmed at different reduction ratios. Those too large to be entirely included in one exposure are filmed beginning in the upper left hand corner, left to right and top to bottom, as many frames as required. The following diagrams illustrate the method:



L'exemplaire filmé fut reproduit grâce à la générosité de:

Douglas Library  
Queen's University

Les images suivantes ont été reproduites avec le plus grand soin, compte tenu de la condition et de la netteté de l'exemplaire filmé, et en conformité avec les conditions du contrat de filmage.

Les exemplaires originaux dont la couverture en papier est imprimée sont filmés en commençant par le premier plat et en terminant soit par la dernière page qui comporte une empreinte d'impression ou d'illustration, soit par le second plat, selon le cas. Tous les autres exemplaires originaux sont filmés en commençant par la première page qui comporte une empreinte d'impression ou d'illustration et en terminant par la dernière page qui comporte une telle empreinte.

Un des symboles suivants apparaîtra sur la dernière image de chaque microfiche, selon le cas: le symbole  $\rightarrow$  signifie "A SUIVRE", le symbole  $\nabla$  signifie "FIN".

Les cartes, planches, tableaux, etc., peuvent être filmés à des taux de réduction différents. Lorsque le document est trop grand pour être reproduit en un seul cliché, il est filmé à partir de l'angle supérieur gauche, de gauche à droite, et de haut en bas, en prenant le nombre d'images nécessaire. Les diagrammes suivants illustrent la méthode.



The  
GARDEN  
of the  
GULF

Prince Edward.

Island.

*The* EDITH and LORNE PIERCE  
COLLECTION of CANADIANA



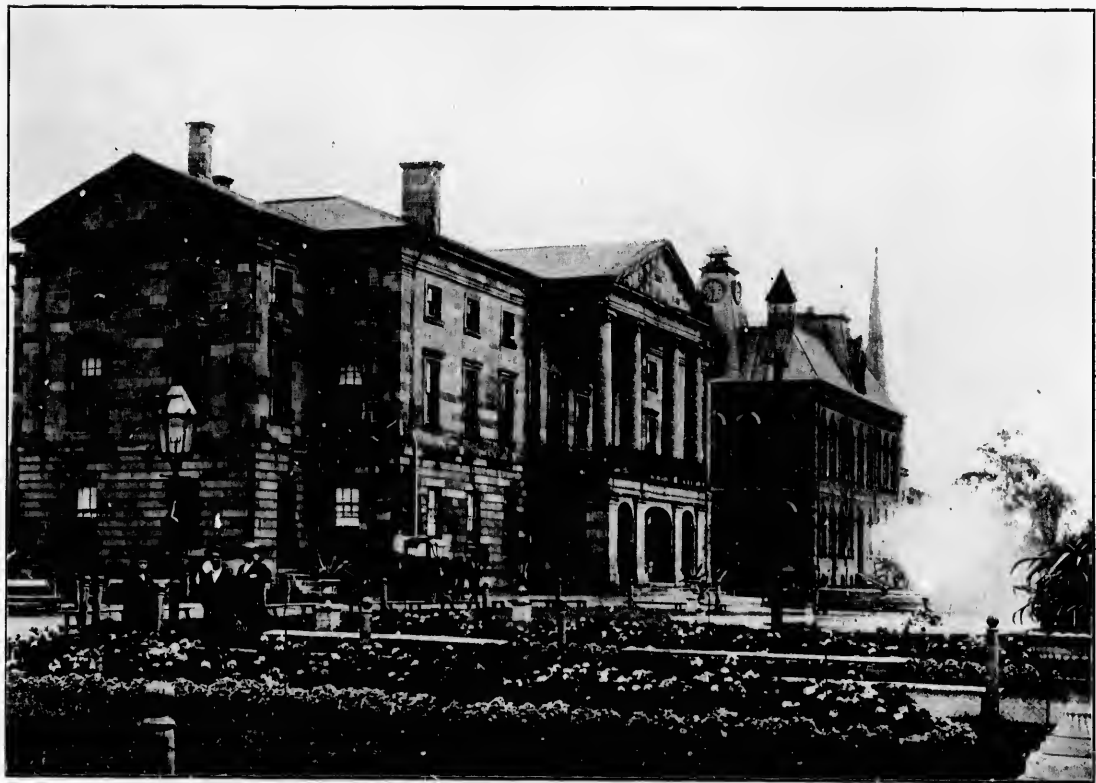
*Queen's University at Kingston*

Sefer Art 706 P 1111 1111

Sejer Antiquæ F. FELIX 1850



An Island Evangeline.



Provincial Building and Queen Square Gardens, Charlottetown.



THE  
GARDEN OF  
THE GULF:

Prince  
Edward  
Island.



AND ITS HANDSOME AND DELIGHTFUL  
CAPITAL

# CHARLOTTETOWN.



BEING PICTURES AND DESCRIPTION OF THE  
CHARMS OF CITY AND SEASHORE  
AS SUMMER RESORTS.



ONE OF A SERIES OF  
VIEW BOOKS OF  
Canadian Scenic Places  
PUBLISHED BY  
W. G. MACFARLANE,  
TORONTO.

GEO. CARTER & CO.,  
PUBLISHERS,  
CHARLOTTETOWN,  
P.E.I.



Victoria Row and some Representative Business\_Blocks.



Park Roadway, Charlottetown.



View East from Post Office, Overlooking Harbor.

## THE GARDEN OF THE GULF, PRINCE EDWARD ISLAND.



THERE is something very distinctive about Prince Edward Island with its brilliant atmosphere, its depth of color, its luxuriance of foliage. One almost thinks he is in the tropics in that intensely clear air, every object shows so vividly and colors seem to breathe, they have so much life in them. The Island seems to have been steeped in sunshine, giving the earth its deep red hue, the foliage its luxuriant green. It is a veritable garden province and its rolling hills are dotted with happy homesteads and farms.

Charlottetown, the Island's Capital, is a prosperous city of about twelve thousand inhabitants, just emerging into the name and appearance of metropolitan status. It has many things to recommend it to the tourist and sightseer. It is a busy city, situated upon a magnificent harbor, and its wide streets and avenues of shade trees, not to mention its substantial architecture, give it an aristocratic appearance. But the chef d'oeuvre of the city is Queen Square with its Legislative Building in the old colonial style, flanked on either side by the Court House and Post Office. Then facing the square are rows of handsome business blocks. There are few churches in Canada that surpass in magnitude St. Dunstan's R.C. Cathedral. It is a magnificent structure and the architectural feature of the city. St. Paul's (Anglican) and St. James (Presbyterian) are also fine edifices. Among the other notable buildings are Prince of Wales College, Bishop's Palace, City Hall,



The Seats of Authority, the Colonial Building, Court House and Post Office.



Fort Edward and the Dogs of War.



St. James Presbyterian Church.



St. Paul's Anglican Church.



Masonic Temple, Prince Edward Island and Charlottetown Hospitals and the Public Schools.

On the western shore is Victoria Park, a delightful recreation ground, with its pretty drives and lawns for sports. It is approached by a breezy roadway and at its entrance are the guns and ramparts of Fort Edward.

There are pleasant drives all about Charlottetown and one of the principal ones is that to Warren Farm, the chief historic spot on the Island, the site of the old French Capital, Port La Joie. Now nothing remains but mounds and excavations, while some old relics dug up there are reminders of the French community and of Fort Amherst, which was afterwards built by the English at the spot.

Numerous excursions are offered from Charlottetown by water to various south shore places, and the drives over the rolling hills and along pastoral valleys are charming.

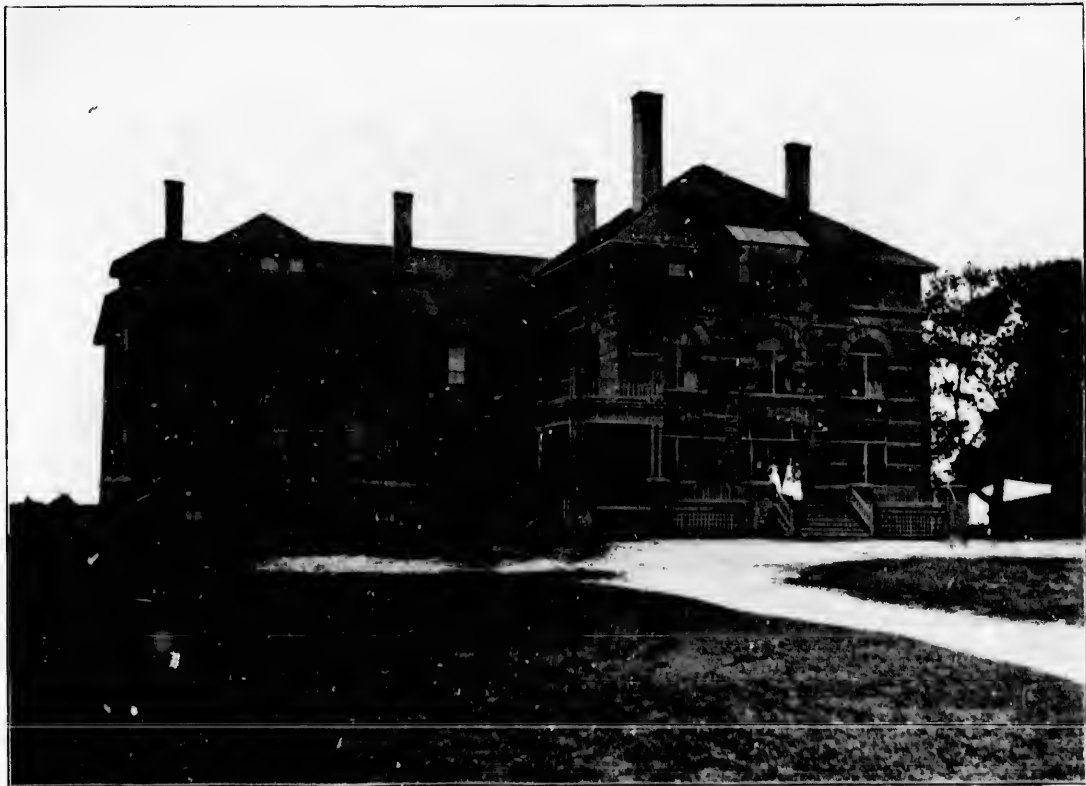
Charlottetown is connected with the outside world by several lines of steamers, including those of the Charlottetown Steam Navigation Co., running to Pictou and Point du Chene. It is the terminus of the Plant Line from Boston and a port of call of the Quebec Steamship Co's Steamer "Campana," running from Montreal to Pictou.



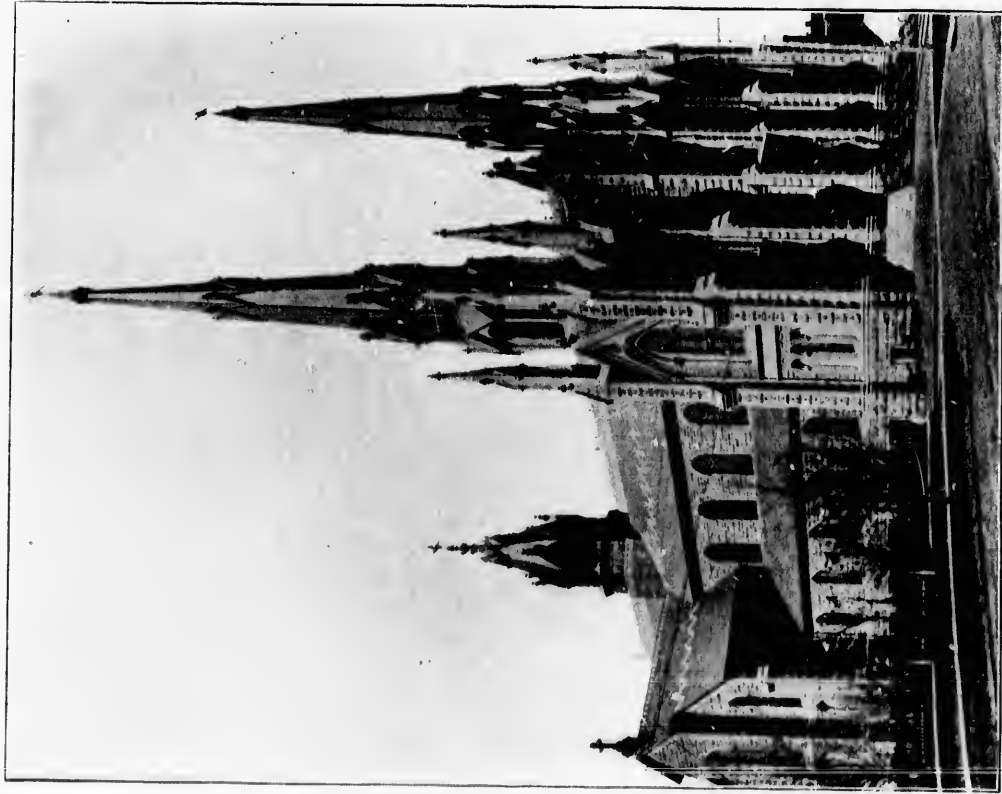
A Typical Summer Scene.



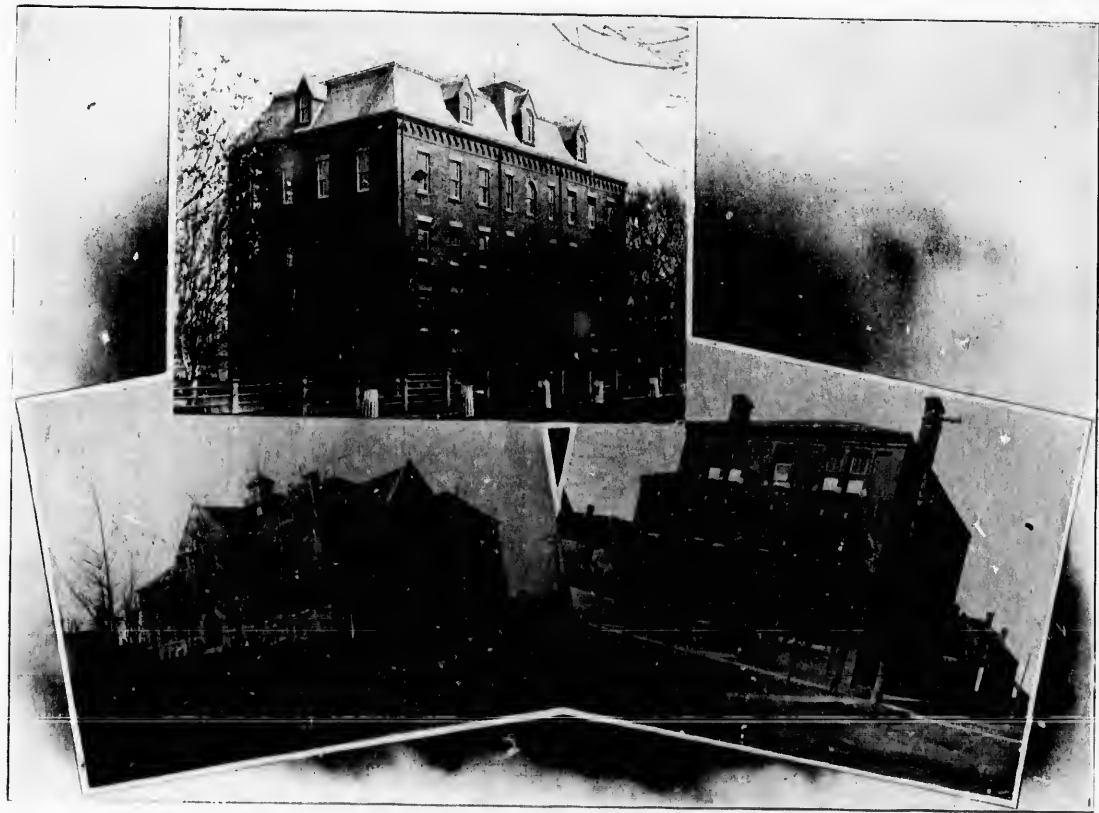
1. Upper Prince Street.      2. St. Dunstan's Cathedral and Bishop's Palace.  
3. Queen Square.      4. Market Building.



The New Prince Edward Island Hospital.



Magnificent St. Dunstan's Cathedral.



Prince of Wales College, Kent Street School, Merchants Bank.



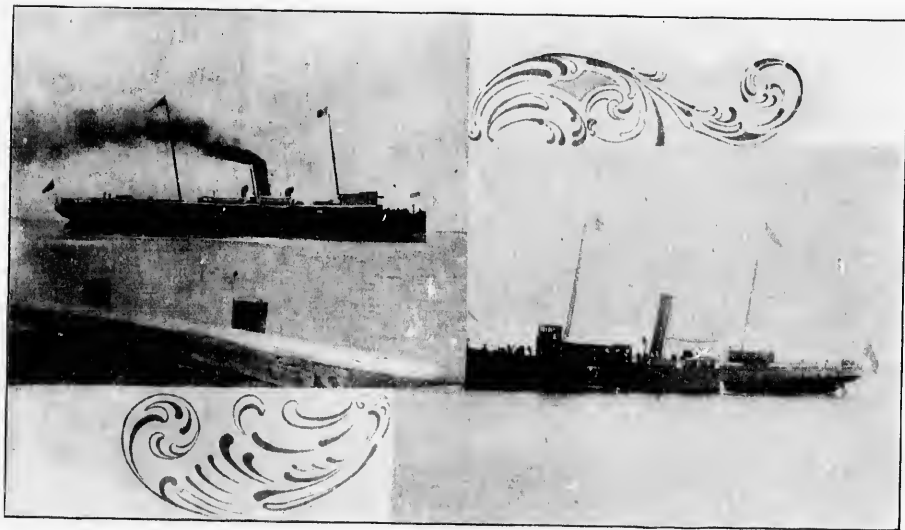
Panoramic View of Charlottetown and

From the Roof of the Prince Street School a magnificent view is to be had of Charlottetown and its spacious  
and long tongues of land effectually protect this fine expanse of



Panoramic View of Charlottetown and Harbor.

of Charlottetown and its spacious Harbor. Into the Harbor flow three rivers, the York, Elliot and Hillsborough, which actually protect this fine expanse of water from the storms without.



How the Island is reached, Steamers "Northumberland" and "Princess" of the  
Charlottetown Steam Navigation Company.



## THE NORTH SHORE RESORTS.



A BEAUTIFUL drive across the Island from Charlottetown brings one to the charming seaside resorts of the north shore. These are also reached from nearby stations of the Prince Edward Island Railway. Here are fifty miles of white sand dunes or hills that the billows of old Atlantic have piled up and fifty miles of glistening white sand beach as fine as dust and as hard as a billiard board. There is no finer surf bathing in the world, and the facilities are excellent for all kinds of sport, deep sea fishing, trout angling, wild fowl shooting and so on.

Tracadie, Stanhope, Cove Head and Brackley Beach, are almost due north from Charlottetown and about fifteen miles away. These resorts are grouped within a few miles of each other and are all delightful places offering the full list of attractions enumerated and some additional. At Tracadie is the Acadia Hotel and the Tracadie golf links. From here too



The Tracadie Fisheries.



Old Government House Avenue.

the Acadian settlements can be reached in a day's excursion. At Brackley Beach is Shaw's Hotel, at Cove Head is the Cliff House. At Stanhope is the summer residence of Alex. McDonald, of Cincinnati, the Standard Oil magnate. Rustico is further to the west and the Seaside Hotel is located here. This is reached by coach from Charlottetown, or by train to Hunter River.

Summerside, on Bedeque Bay, is the commercial centre of the western end of the Island, and is headquarters for wild fowl shooting in Richmond Bay. Near Summerside is Malpeque, another charming north shore resort. At eastern end of the Island are Souris and Georgetown.

Prince Edward Island is being visited annually by an increasing number of tourists. The trip thereto, whether by direct steamer or by rail and water route via Nova Scotia and New Brunswick towns and cities, is a pleasant and varied one, and on the Island are found every form of summer amusement, excellent hotel accommodation and a climate unsurpassed on the continent. The air is remarkably fresh and buoyant, there is an entire absence of fog and the temperature is cool with breezes always blowing from the Gulf. Were the north shore within easy reach of as large a population as the New Jersey coast resorts it would attract as many hundreds of thousands of tourists and health seekers every year. People, however, are learning to take more extended vacation trips, to hunt out new places and the Island will attract ever increasing throngs.



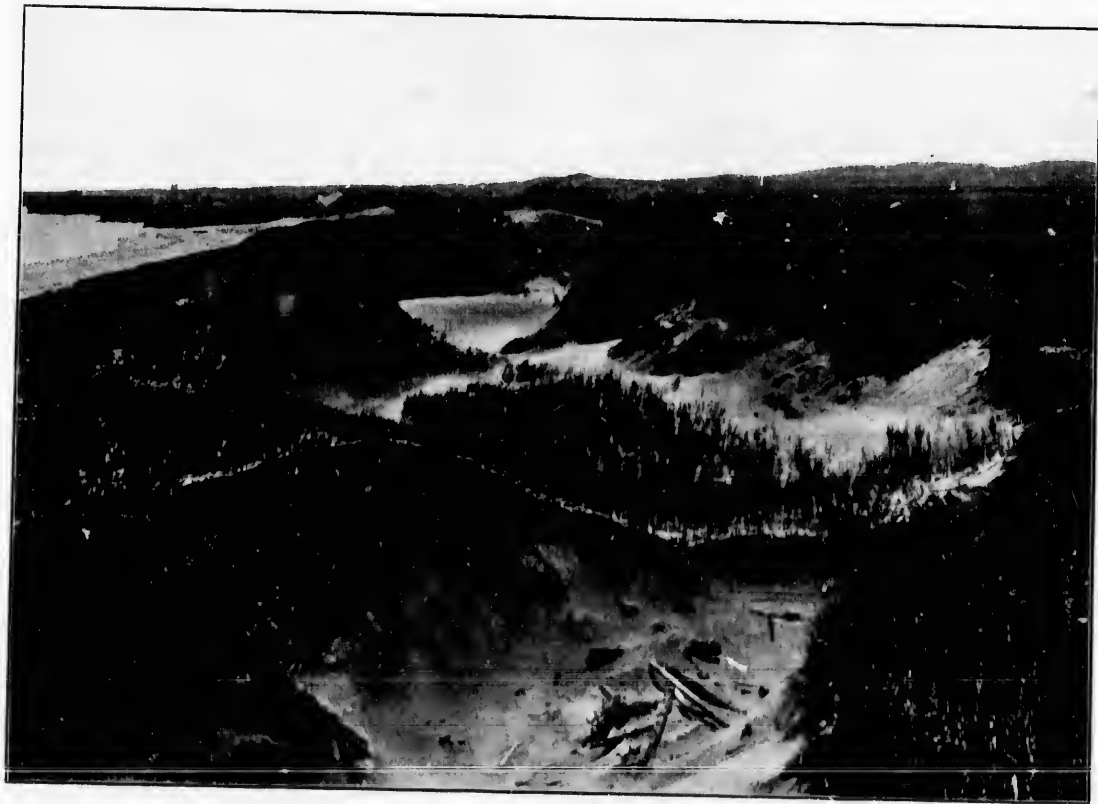
In the Surf at Tracadie.



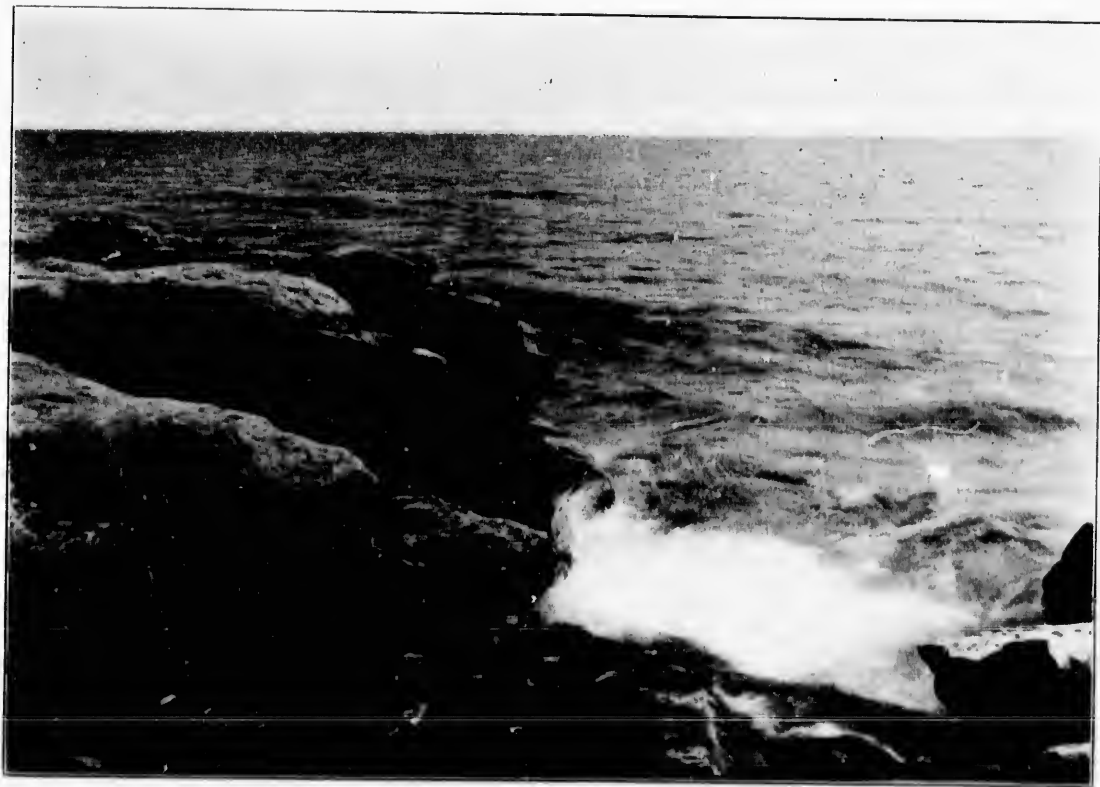
A Picturesque Rock at Cavendish, near Rustico.



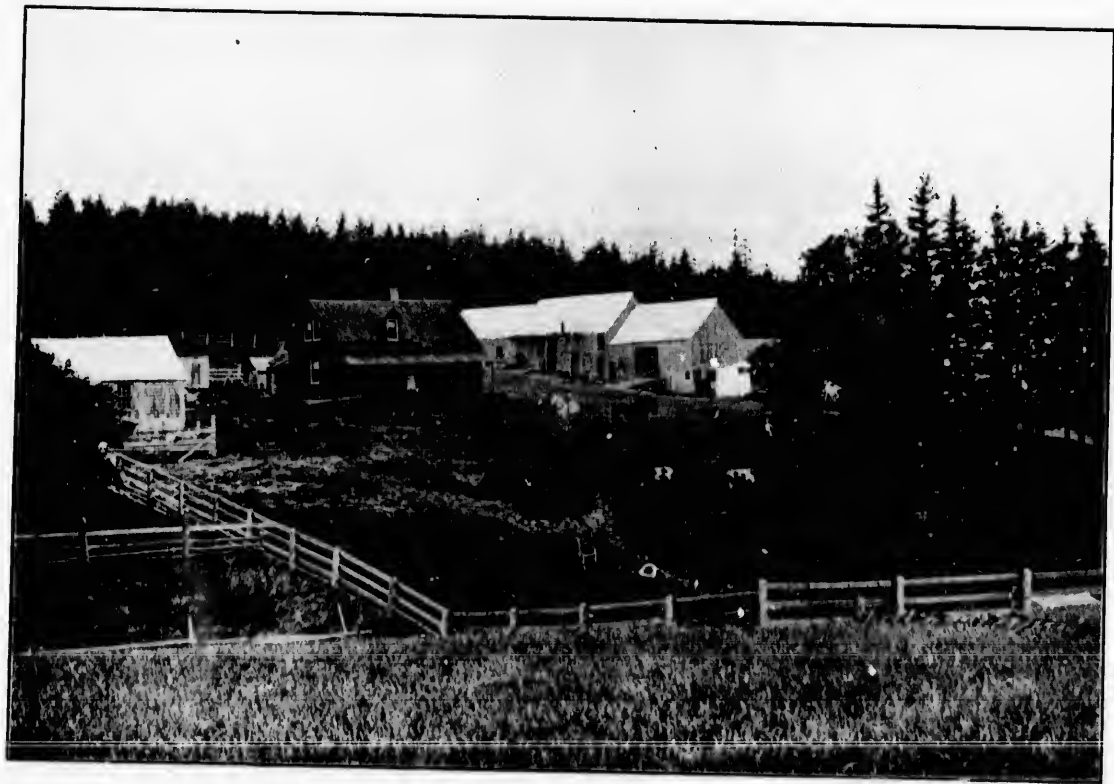
The Island's Lovely Beaches - At Cavendish.



Fifty Miles of White Sand Dunes.



Abegweit Cradled by the Wave.

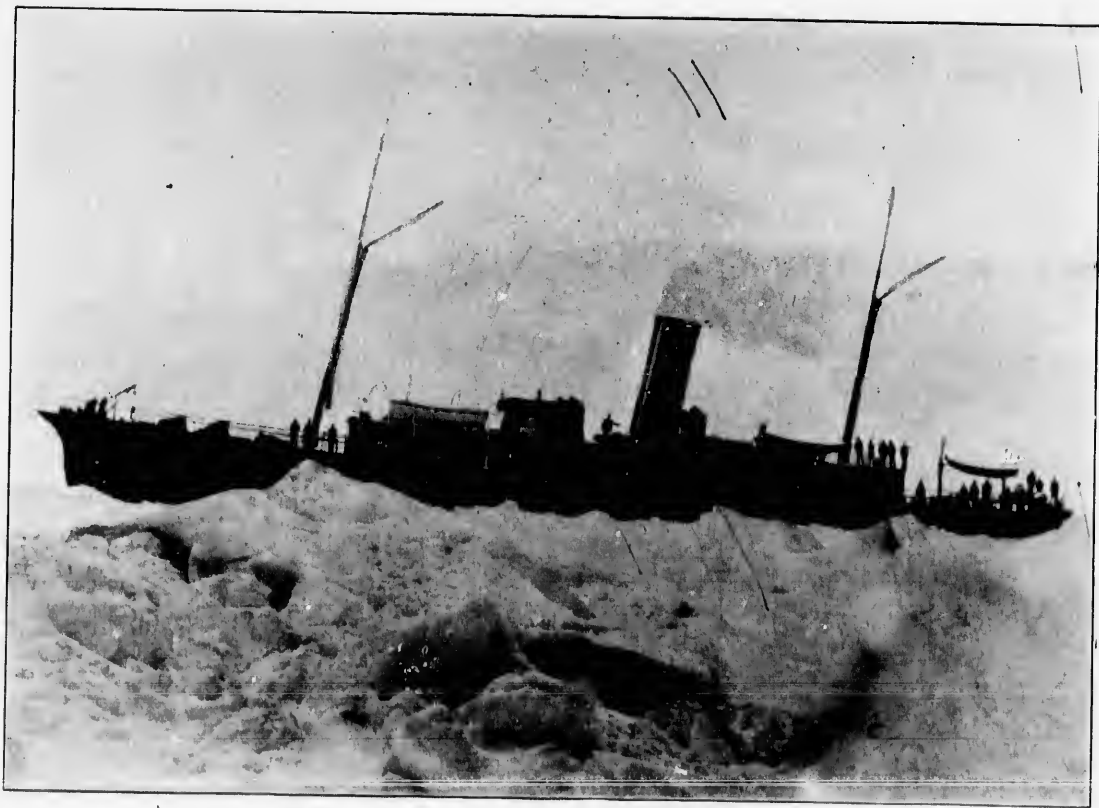


Warren Farm, the Site of the old French Capital, Port La Joie.





A Harvesting Scene in the Land of Sunshine.



The Government Steamer "Stanley," Breaking Through the Ice.

## ISLAND COMMUNICATION IN WINTER.



WINTER communication is one of the most engrossing questions with the Islanders. For years they have been agitating for tunnel connection with the mainland, but no practical step has been taken in that direction yet. Navigation across the Straits of Northumberland to the mainland is rendered difficult by the drift ice from the Arctic, which obstructs the passage. The splendid ice-breaking government steamers Minto and Stanley, however, successfully cut the floes and solid ice and keep up regular communication during the winter. It is an exhilarating trip to take and it is interesting to watch the steamers attack a mammoth floe and by repeated assaults force a passage through.

Our illustrations show both the new way and the old way of reaching the Island in winter. Until recently a great deal of the travel was in ice boats crossing between the Capes, Traverse and Tormentine, a distance of nine miles. The standard ice boat is eighteen feet long and five feet wide. It has a double keel, which serves for runners. The crew are hardy, courageous men and the passengers work their passage. Each man is strapped to the boat and starting out from the shore they shove the boat over the hummocks and hollows of the hard ice. Occasionally one of the party drops in an air hole but the strap saves him. Then the boat is at length launched in the channel of the Straits and the oars do the work until the hard ice of the other shore is reached. If there is much "lolly" (a sort of slush which frequently floats in the water to the depth of several feet) the difficulties of the journey are greatly increased.

It takes from three and a half to six or seven hours to cross and on the coldest day crews and passengers arrive at their destination dripping with perspiration.



The Winter Journey at the Capes—The Ice Boats.



1. Landing from the Ice Boats.      2. The Ice Breaking Steamer "Minto,"  
3. The Ice Boats and their Crews.



Scenic Canada  
Photo Album  
Series.



Published  
by

W. G. MacFarlane,  
Toronto.

SCENIC  
CANADA

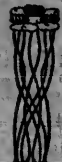


PHOTO  
ALBUM  
SERIES

The Garden of the Gulf—Prince  
Edward Island.

Through the Evangeline Country to  
Halifax.

St. John—City and River.

Fredericton—The Celestial City and  
the River St. John.

The Pittsburg of the North—Sydney,  
Cape Breton.

Toronto—The Ideal Summer City.

Montreal—Historic and Picturesque.

Ye Ancient City of Quebec and ye  
Renowned Saguenay.

Port Arthur and Fort William and the  
Gateway to the West.

EACH 25 CENTS.

Cooidom—Tourists and Sportsmen's Guide to  
the Maritime Provinces of Canada.

