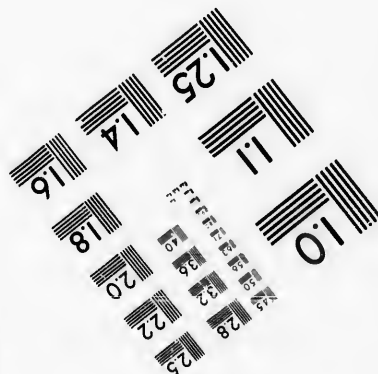
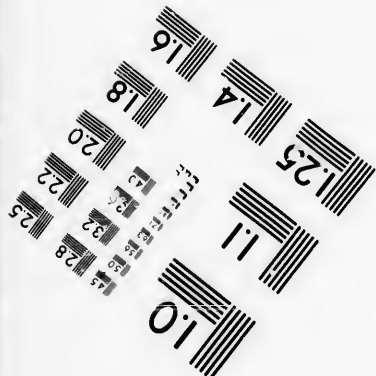
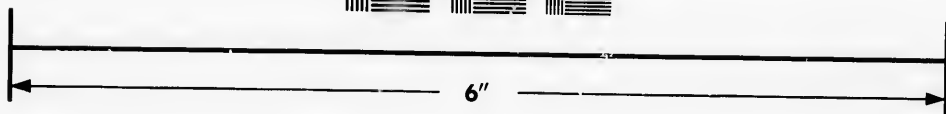
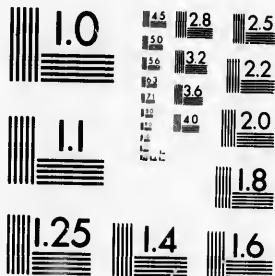


**IMAGE EVALUATION  
TEST TARGET (MT-3)**



**Photographic  
Sciences  
Corporation**

23 WEST MAIN STREET  
WEBSTER, N. Y. 14580  
(716) 872-4503



Technical and Bibliographic Notes/Notes techniques et bibliographiques

The Institute has attempted to obtain the best original copy available for filming. Features of this copy which may be bibliographically unique, which may alter any of the images in the reproduction, or which may significantly change the usual method of filming, are checked below.

L'Institut a microfilmé le meilleur exemplaire qu'il lui a été possible de se procurer. Les détails de cet exemplaire qui sont peut-être uniques du point de vue bibliographique, qui peuvent modifier une image reproduite, ou qui peuvent exiger une modification dans la méthode normale de filmage sont indiqués ci-dessous.

- Coloured covers/  
Couverture de couleur
- Covers damaged/  
Couverture endommagée
- Covers restored and/or laminated/  
Couverture restaurée et/ou pelliculée
- Cover title missing/  
Le titre de couverture manque
- Coloured maps/  
Cartes géographiques en couleur
- Coloured ink (i.e. other than blue or black)/  
Encre de couleur (i.e. autre que bleue ou noire)
- Coloured plates and/or illustrations/  
Planches et/ou illustrations en couleur
- Bound with other material/  
Relié avec d'autres documents
- Tight binding may cause shadows or distortion along interior margin/  
La reliure serrée peut causer de l'ombre ou de la distorsion le long de la marge intérieure
- Blank leaves added during restoration may appear within the text. Whenever possible, these have been omitted from filming/  
Il se peut que certaines pages blanches ajoutées lors d'une restauration apparaissent dans le texte, mais, lorsque cela était possible, ces pages n'ont pas été filmées.

- Coloured pages/  
Pages de couleur
- Pages damaged/  
Pages endommagées
- Pages restored and/or laminated/  
Pages restaurées et/ou pelliculées
- Pages discoloured, stained or foxed/  
Pages décolorées, tachetées ou piquées
- Pages detached/  
Pages détachées
- Showthrough/  
Transparence
- Quality of print varies/  
Qualité inégale de l'impression
- Includes supplementary material/  
Comprend du matériel supplémentaire
- Only edition available/  
Seule édition disponible
- Pages wholly or partially obscured by errata slips, tissues, etc., have been refilmed to ensure the best possible image/  
Les pages totalement ou partiellement obscurcies par un feuillet d'errata, une pelure, etc., ont été filmées à nouveau de façon à obtenir la meilleure image possible.

Additional comments:/ [Printed ephemera] [4] p.  
Commentaires supplémentaires:

This item is filmed at the reduction ratio checked below/  
Ce document est filmé au taux de réduction indiqué ci-dessous.

10X	12X	14X	16X	18X	20X	22X	24X	26X	28X	30X	32X
						✓					

The copy filmed here has been reproduced thanks to the generosity of:

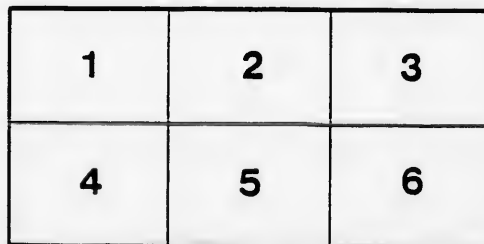
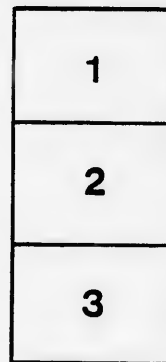
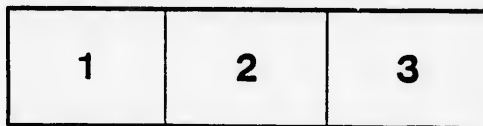
D. B. Weldon Library  
University of Western Ontario  
(Regional History Room)

The images appearing here are the best quality possible considering the condition and legibility of the original copy and in keeping with the filming contract specifications.

Original copies in printed paper covers are filmed beginning with the front cover and ending on the last page with a printed or illustrated impression, or the back cover when appropriate. All other original copies are filmed beginning on the first page with a printed or illustrated impression, and ending on the last page with a printed or illustrated impression.

The last recorded frame on each microfiche shall contain the symbol  $\rightarrow$  (meaning "CONTINUED"), or the symbol  $\nabla$  (meaning "END"), whichever applies.

Maps, plates, charts, etc., may be filmed at different reduction ratios. Those too large to be entirely included in one exposure are filmed beginning in the upper left hand corner, left to right and top to bottom, as many frames as required. The following diagrams illustrate the method:



L'exemplaire filmé fut reproduit grâce à la générosité de:

D. B. Weldon Library  
University of Western Ontario  
(Regional History Room)

Les images suivantes ont été reproduites avec le plus grand soin, compte tenu de la condition et de la netteté de l'exemplaire filmé, et en conformité avec les conditions du contrat de filmage.

Les exemplaires originaux dont la couverture en papier est imprimée sont filmés en commençant par le premier plat et en terminant soit par la dernière page qui comporte une empreinte d'impression ou d'illustration, soit par le second plat, selon le cas. Tous les autres exemplaires originaux sont filmés en commençant par la première page qui comporte une empreinte d'impression ou d'illustration et en terminant par la dernière page qui comporte une telle empreinte.

Un des symboles suivants apparaîtra sur la dernière image de chaque microfiche, selon le cas: le symbole  $\rightarrow$  signifie "A SUIVRE", le symbole  $\nabla$  signifie "FIN".

Les cartes, planches, tableaux, etc., peuvent être filmés à des taux de réduction différents. Lorsque le document est trop grand pour être reproduit en un seul cliché, il est filmé à partir de l'angle supérieur gauche, de gauche à droite, et de haut en bas, en prenant le nombre d'images nécessaire. Les diagrammes suivants illustrent la méthode.

rrrata  
to

pelure,  
n à



32X

1891

THE JESSIE COUTHOU ENTERTAINERS



Jessie Couthou-Shandrew,  
The Popular Recitationist

Willard E. Shandrew,  
Baritone

ADDRESS: JOSEPH COUTHOU,  
AUDITORIUM HOTEL, CHICAGO.

VICTORIA HALL,

Wednesday Evening, October 21st, 1891.

SPACE FOR DATE AND NAME OF HALL.

**DES MOINES (IOWA) NEWS.**

\* \* \* \* One of the most enjoyable and successful events of the season.

Jessie Couthoui-Shandrew is a charming and versatile artist, and Mr. Shandrew has a baritone voice of fine quality. He sustained his part admirably.

**DES MOINES REVIEW.**

Jessie Couthoui-Shandrew captivated the audience at once. Mr. Shandrew is a fine baritone, giving his numbers with splendid expression and effectiveness.

**BURLINGTON (IOWA) HAWKEYE.**

The entertainment was very pleasing and very satisfactory.

**BURLINGTON GAZETTE.**

Jessie Couthoui-Shandrew is a recitationist of extraordinary ability, and Mr. Shandrew sings with a very pleasing baritone voice. The entertainment gave entire satisfaction.

**OMAHA (NEB.) BEE.**

Jessie Couthoui-Shandrew is deservedly one of the best known recitationists before the public, and Mr. Shandrew has a pleasing baritone voice. They gave a delightful entertainment last evening in the auditorium of the First Congregational Church.

# ESS ENCOMIUMS

## MUSCATINE (IOWA) JOURNAL.

It was a refined and delightful entertainment of the highest order of talent.

## AURORA (ILL.) BEACON.

Jessie Couthoui-Shandrew's recitations evoked enthusiastic applause. Her enunciation is very distinct. Mr. Shandrew showed himself to be possessed of a fine voice.

## MONMOUTH (ILL.) ATLAS.

It is safe to say that of the many entertainments here this winter, none has given the satisfaction equal to this one. All in all, the evening was a delightful one.

## MOUNT PLEASANT (IOWA) NEWS.

The entertainment fully met the highest expectations of the most sanguine, and both these artists were several times compelled to return before the footlights.

## CRESTON (IOWA) GAZETTE.

Jessie Couthoui-Shandrew sustained her reputation, and her work warranted all the good words that have been spoken for her. Mr. Shandrew has a rich baritone voice and was received with marked favor by the audience.



\* \* \* Entertainment. \* \* \*

Elocutionary, Musical and Dramatic.

First Appearance in Petrolia, Ont.,

OF THE

Jessie Couthoui Entertainers,

(PRONOUNCED COOTHWEE.)

Victoria Hall, Wednesday Evening, Oct. 27th, 1897.



Jessie Couthoui-Shandrew,



THE POPULAR RECITATIONIST.

WILLARD E. SHANDREW.....The Pleasing Baritone.  
MISS MACALPINE.....Pianist and Accompanist.

- 1. SELECTION.....
- 2. A CLOSE CALL.....*Baynes.*  
JESSIE COUTHOU-SHANDREW
- 3. THE CLANG OF THE FORGE.....*Rodney.*  
WILLARD E. SHANDREW.
- 4. (a) SCENE FROM KING JOHN, Act 4, Scene 1.....*Shakespeare.*
- 5. (b) CHRISTMAS AT THE QUARTERS.....*Russell.* *Fine*  
(In which Mrs. Shandrew introduces the violin and banjo.)  
JESSIE COUTHOU-SHANDREW.
- 6. AFTERWARDS.....*Mullen.* *Good*  
WILLARD E. SHANDREW.
- 7. SELECTION.....

BRIEF INTERMISSION.

After which the entertainment will conclude with the one-act comedy entitled.

"A Happy Pair."

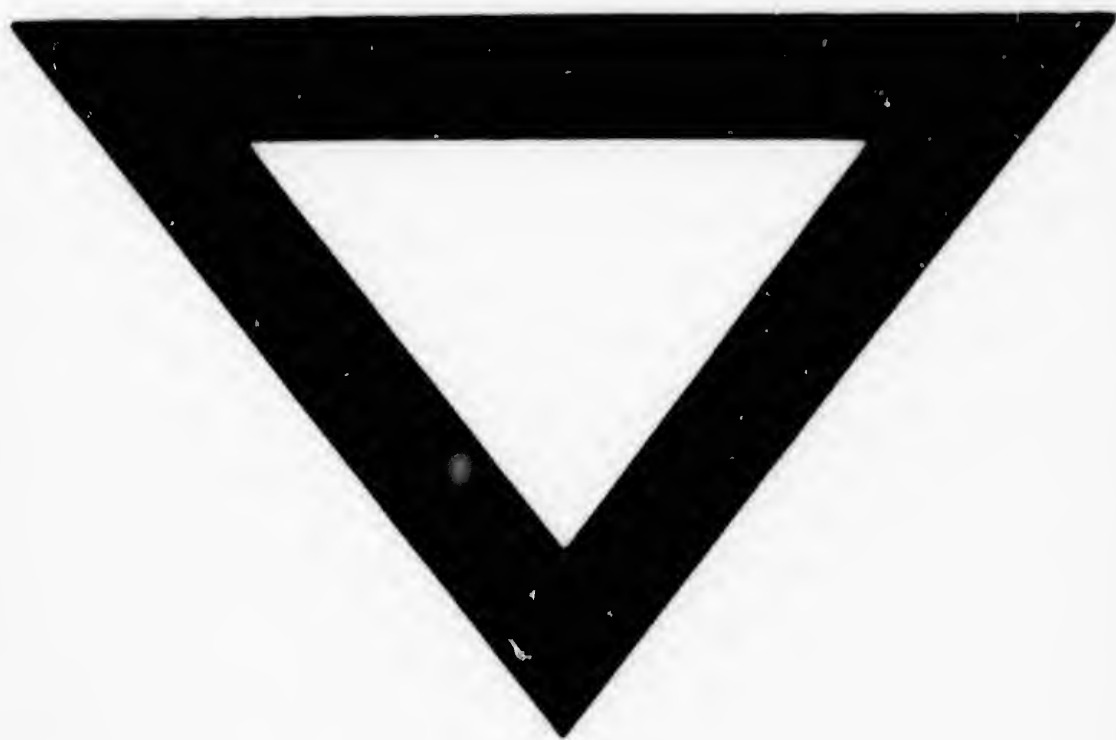


MR. HONEYTON.....WILLARD E. SHANDREW.  
MRS. HONEYTON.....JESSIE C. SHANDREW.

NOTE—U-hers will please keep the doors closed during the rendition of numbers in the first part of programme, and oblige the management.

"TISER PRINT, Petrolia.





257