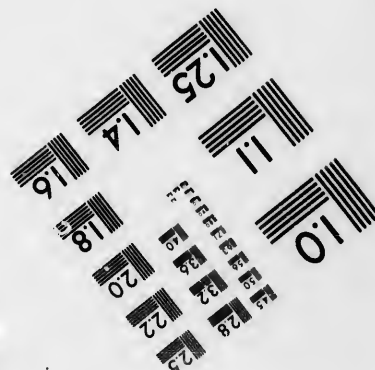
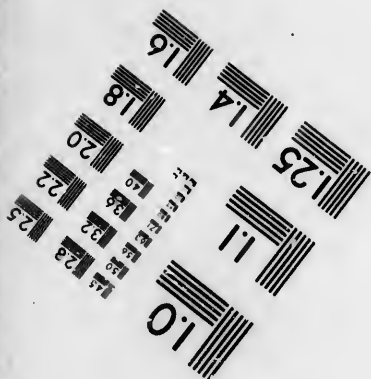
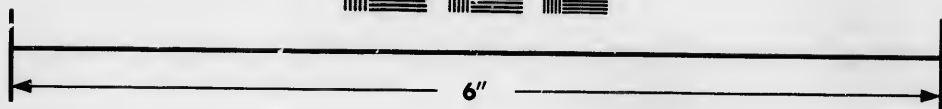
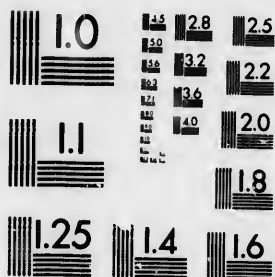


**IMAGE EVALUATION
TEST TARGET (MT-3)**



**Photographic
Sciences
Corporation**

23 WEST MAIN STREET
WEBSTER, N.Y. 14580
(716) 872-4503

**CIHM/ICMH
Microfiche
Series.**

**CIHM/ICMH
Collection de
microfiches.**



Canadian Institute for Historical Microreproductions / Institut canadien de microreproductions historiques

© 1986

Technical and Bibliographic Notes/Notes techniques et bibliographiques

The Institute has attempted to obtain the best original copy available for filming. Features of this copy which may be bibliographically unique, which may alter any of the images in the reproduction, or which may significantly change the usual method of filming, are checked below.

L'Institut a microfilmé le meilleur exemplaire qu'il lui a été possible de se procurer. Les détails de cet exemplaire qui sont peut-être uniques du point de vue bibliographique, qui peuvent modifier une image reproduite, ou qui peuvent exiger une modification dans la méthode normale de filmage sont indiqués ci-dessous.

- | | |
|--|--|
| <input type="checkbox"/> Coloured covers/
Couverture de couleur | <input type="checkbox"/> Coloured pages/
Pages de couleur |
| <input type="checkbox"/> Covers damaged/
Couverture endommagée | <input type="checkbox"/> Pages damaged/
Pages endommagées |
| <input type="checkbox"/> Covers restored and/or laminated/
Couverture restaurée et/ou pelliculée | <input type="checkbox"/> Pages restored and/or laminated/
Pages restaurées et/ou pelliculées |
| <input type="checkbox"/> Cover title missing/
Le titre de couverture manque | <input checked="" type="checkbox"/> Pages discoloured, stained or foxed/
Pages décolorées, tachetées ou piquées |
| <input type="checkbox"/> Coloured maps/
Cartes géographiques en couleur | <input type="checkbox"/> Pages detached/
Pages détachées |
| <input type="checkbox"/> Coloured ink (i.e. other than blue or black)/
Encre de couleur (i.e. autre que bleue ou noire) | <input type="checkbox"/> Showthrough/
Transparence |
| <input type="checkbox"/> Coloured plates and/or illustrations/
Planches et/ou illustrations en couleur | <input type="checkbox"/> Quality of print varies/
Qualité inégale de l'impression |
| <input type="checkbox"/> Bound with other material/
Relié avec d'autres documents | <input type="checkbox"/> Includes supplementary material/
Comprend du matériel supplémentaire |
| <input type="checkbox"/> Tight binding may cause shadows or distortion
along interior margin/
La reliure serrée peut causer de l'ombre ou de la
distorsion le long de la marge intérieure | <input type="checkbox"/> Only edition available/
Seule édition disponible |
| <input type="checkbox"/> Blank leaves added during restoration may
appear within the text. Whenever possible, these
have been omitted from filming/
Il se peut que certaines pages blanches ajoutées
lors d'une restauration apparaissent dans le texte,
mais, lorsque cela était possible, ces pages n'ont
pas été filmées. | <input type="checkbox"/> Pages wholly or partially obscured by errata
slips, tissues, etc., have been refilmed to
ensure the best possible image/
Les pages totalement ou partiellement
obscurcies par un feuillet d'errata, une pelure,
etc., ont été filmées à nouveau de façon à
obtenir la meilleure image possible. |
- Additional comments: [Printed ephemera] [2] p.
Commentaires supplémentaires:

This item is filmed at the reduction ratio checked below/
Ce document est filmé au taux de réduction indiqué ci-dessous.

10X	14X	18X	22X	26X	30X
<input type="checkbox"/>	<input type="checkbox"/>	<input type="checkbox"/>	<input type="checkbox"/>	<input checked="" type="checkbox"/>	<input type="checkbox"/>
12X	16X	20X	24X	28X	32X

The copy filmed here has been reproduced thanks to the generosity of:

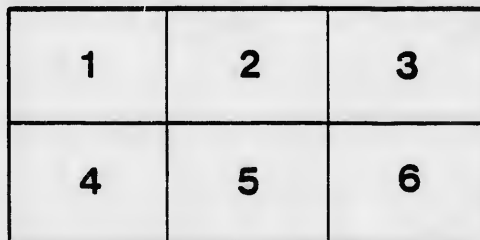
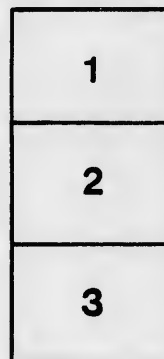
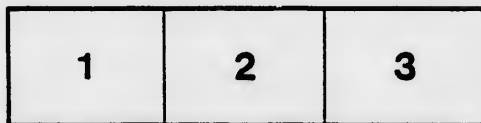
Manuscript Division
Public Archives of Canada

The images appearing here are the best quality possible considering the condition and legibility of the original copy and in keeping with the filming contract specifications.

Original copies in printed paper covers are filmed beginning with the front cover and ending on the last page with a printed or illustrated impression, or the back cover when appropriate. All other original copies are filmed beginning on the first page with a printed or illustrated impression, and ending on the last page with a printed or illustrated impression.

The last recorded frame on each microfiche shall contain the symbol \rightarrow (meaning "CONTINUED"), or the symbol ∇ (meaning "END"), whichever applies.

Maps, plates, charts, etc., may be filmed at different reduction ratios. Those too large to be entirely included in one exposure are filmed beginning in the upper left hand corner, left to right and top to bottom, as many frames as required. The following diagrams illustrate the method:



L'exemplaire filmé fut reproduit grâce à la générosité de:

Division des manuscrits
Archives publiques du Canada

Les images suivantes ont été reproduites avec le plus grand soin, compte tenu de la condition et de la netteté de l'exemplaire filmé, et en conformité avec les conditions du contrat de filmage.

Les exemplaires originaux dont la couverture en papier est imprimée sont filmés en commençant par le premier plat et en terminant soit par la dernière page qui comporte une empreinte d'impression ou d'illustration, soit par le second plat, selon le cas. Tous les autres exemplaires originaux sont filmés en commençant par la première page qui comporte une empreinte d'impression ou d'illustration et en terminant par la dernière page qui comporte une telle empreinte.

Un des symboles suivants apparaîtra sur la dernière image de chaque microfiche, selon le cas: le symbole \rightarrow signifie "A SUIVRE", le symbole ∇ signifie "FIN".

Les cartes, planches, tableaux, etc., peuvent être filmés à des taux de réduction différents. Lorsque le document est trop grand pour être reproduit sur un seul cliché, il est filmé à partir de l'angle supérieur gauche, de gauche à droite, et de haut en bas, en prenant le nombre d'images nécessaire. Les diagrammes suivants illustrent la méthode.

1852 - 22 Aug 1852
(CIRCULAR.)

30 19 August 1852

6-7-52
To the Clerks of the Peace.

SIR,

It is probable, from the advanced period of the year, that the Statutes of the present Session may not be published in time to enable the Selectors of Jurors to procure them and perform their duties within the time prescribed for that purpose.

HIS EXCELLENCY THE GOVERNOR GENERAL has therefore been pleased to direct me to call your particular attention to the alterations made in the Jurors' Act of 1850, by the Bill passed during the present Session, in order that the necessary steps may be taken to ensure the Jurors' Books for 1852 being properly completed according to its provisions.

I am further directed by His Excellency to transmit copies of such of the Sections of the Jurors' Act of 1850, as have been altered as they stand amended by the Bill of 1851, together with the new provisions of the latter. So that parties having copies of the Act of 1850 will only have to substitute the amended Sections for the original ones in such copies to have the law as it will stand under the operation of both.

I am also commanded to direct that you address a circular to the Heads of the different Municipal Corporations within your County or Union of Counties, as you were directed to do last year, calling their attention to the 11th Section of the Jurors' Act, as amended, and recommending that they should notify their brother Selectors respectively, of the time and place of meeting for the performance of their duties, noticing particularly that the period fixed by the amendment for the meeting of the Selectors is the 1st of September, instead of the 8th of that month. In your circular to such Officers, you will also request that the Selectors should endorse on their Reports, for the information of the Government and Parliament, if it should call for such Returns.

1st. The amount of Assessment which they found to be that necessary to qualify Jurors for such local division of the County according to the 4th section of the Act.

2nd. The number of Jurors selected under each division of their Report and the total of such numbers.

3rd. The number of persons on the Assessment Rolls whom they found, though otherwise qualified to be elected, disqualified to be so under the 9th and 10th sections.

4th. The number of persons on such Roll whom they found qualified, but exempt from being selected under the 5th and 6th sections.

5th. The number of persons on such Roll not qualified in respect of property, and

6th. The whole number of persons on such Assessment Roll.

The necessary expense incurred by you in taking these steps on the present occasion you may charge in your general account.

I am further commanded to direct that immediately after the completion of the Jurors' Books for 1852, you will make a return to me in a tabular form, for the information of His Excellency, of

1st. The amount of Assessment which, according to the returns of the different Selectors of Jurors for the different Cities, Towns, Villages and Townships in your County or Union of Counties, was found to be that necessary to qualify Jurors for such City, Town, Village or Township, according to the 4th section of the Act.

2ndly. The number of Jurors selected for each of such Cities, Towns, Villages and Townships, under divisions corresponding with those of the Reports of Selectors, and the total of such numbers both in each City, Town, Village and Township, and in the whole County or Union of Counties.

3rd. The number of persons on the Assessment Rolls of each of such Cities, Towns, Villages and Townships respectively, found disqualified under the 9th and 10th sections of the Act, with the sum total of such disqualified persons.

4th. The number of persons on such Rolls respectively, found qualified but exempted from being selected under the 5th and 6th sections, with the sum total of such exempted persons.

5th. The number of persons on such Rolls respectively, not qualified in respect of property, with the sum total of such persons.

6th. The whole number of persons on each of such Rolls respectively.

7th. The whole amount of the Assessed Property on such Rolls respectively, with the sum total of such Assessments: and

8th. The whole number of inhabitants in such City, Town, Village or Township, with the sum total of such inhabitants in the County or Union of Counties.

I have the honor to be,

Sir,

Your most obedient Seryant,

J. Walker.

Secy.

Having omitted to make the Returns
required by my Circular of 1830, I will
be obliged that they accompany them
you in present year in that an explanation
be given why this has not been done.

Mem. The Returns above alluded to were received
from the Clerks of the Peace of the following Counties,
viz. Lincoln & Nottingham, Leeds & Yorkshire & C.,
Northumberland & Durham, Essex & Hertford, &
& Worcester, Stafford & Gloucester & C.

