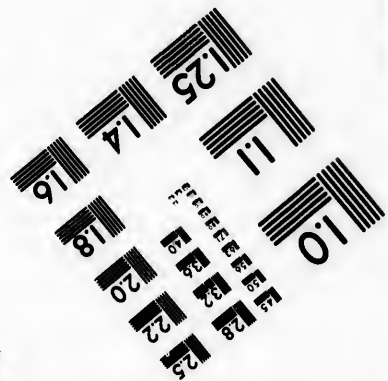
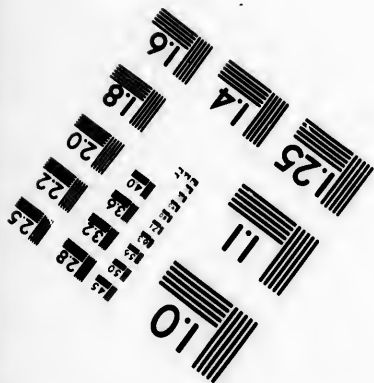
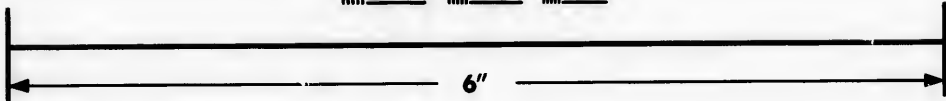
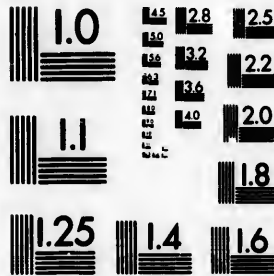


**IMAGE EVALUATION  
TEST TARGET (MT-3)**



**Photographic  
Sciences  
Corporation**

23 WEST MAIN STREET  
WEBSTER, N.Y. 14580  
(716) 872-4503

**CIHM/ICMH  
Microfiche  
Series.**

**CIHM/ICMH  
Collection de  
microfiches.**



**Canadian Institute for Historical Microreproductions / Institut canadien de microreproductions historiques**

**© 1985**

Technical and Bibliographic Notes/Notes techniques et bibliographiques

The Institute has attempted to obtain the best original copy available for filming. Features of this copy which may be bibliographically unique, which may alter any of the images in the reproduction, or which may significantly change the usual method of filming, are checked below.

L'institut a microfilmé le meilleur exemplaire qu'il lui a été possible de se procurer. Les détails de cet exemplaire qui sont peut-être uniques du point de vue bibliographique, qui peuvent modifier une image reproduite, ou qui peuvent exiger une modification dans la méthode normale de filmage sont indiqués ci-dessous.

- Coloured covers/  
Couverture de couleur
- Covers damaged/  
Couverture endommagée
- Covers restored and/or laminated/  
Couverture restaurée et/ou pelliculée
- Cover title missing/  
Le titre de couverture manque
- Coloured maps/  
Cartes géographiques en couleur
- Coloured ink (i.e. other than blue or black)/  
Encre de couleur (i.e. autre que bleue ou noire)
- Coloured plates and/or illustrations/  
Planches et/ou illustrations en couleur
- Bound with other material/  
Relié avec d'autres documents
- Tight binding may cause shadows or distortion along interior margin/  
La reliure serrée peut causer de l'ombre ou de la distorsion le long de la marge intérieure
- Blank leaves added during restoration may appear within the text. Whenever possible, these have been omitted from filming/  
Il se peut que certaines pages blanches ajoutées lors d'une restauration apparaissent dans le texte, mais, lorsque cela était possible, ces pages n'ont pas été filmées.
- Additional comments:/  
Commentaires supplémentaires:      Copy has manuscript annotations.

- Coloured pages/  
Pages de couleur
- Pages damaged/  
Pages endommagées
- Pages restored and/or laminated/  
Pages restaurées et/ou pelliculées
- Pages discoloured, stained or foxed/  
Pages décolorées, tachetées ou piquées
- Pages detached/  
Pages détachées
- Showthrough/  
Transparence
- Quality of print varies/  
Qualité inégale de l'impression
- Includes supplementary material/  
Comprend du matériel supplémentaire
- Only edition available/  
Seule édition disponible
- Pages wholly or partially obscured by errata slips, tissues, etc., have been refilmed to ensure the best possible image/  
Les pages totalement ou partiellement obscurcies par un feuillet d'errata, une pelure, etc., ont été filmées à nouveau de façon à obtenir la meilleure image possible.

This item is filmed at the reduction ratio checked below/  
Ce document est filmé au taux de réduction indiqué ci-dessous.

10X	14X	18X	22X	26X	30X
<input type="checkbox"/>	<input type="checkbox"/>	<input checked="" type="checkbox"/>	<input type="checkbox"/>	<input type="checkbox"/>	<input type="checkbox"/>
12X	16X	20X	24X	28X	32X

The o  
to the

The l  
poss  
of th  
filmi

Orig  
begin  
the l  
sion,  
other  
first  
sion,  
or ill

The l  
shall  
TINU  
whic

Map  
differ  
entir  
begin  
right  
requ  
meth

The copy filmed here has been reproduced thanks to the generosity of:

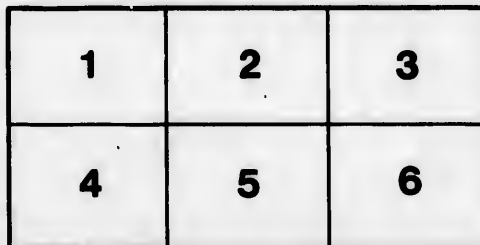
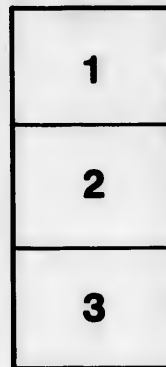
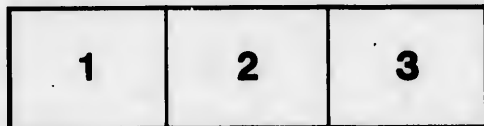
Izaak Walton Killam Memorial Library  
Dalhousie University

The images appearing here are the best quality possible considering the condition and legibility of the original copy and in keeping with the filming contract specifications.

Original copies in printed paper covers are filmed beginning with the front cover and ending on the last page with a printed or illustrated impression, or the back cover when appropriate. All other original copies are filmed beginning on the first page with a printed or illustrated impression, and ending on the last page with a printed or illustrated impression.

The last recorded frame on each microfiche shall contain the symbol  $\rightarrow$  (meaning "CONTINUED"), or the symbol  $\nabla$  (meaning "END"), whichever applies.

Maps, plates, charts, etc., may be filmed at different reduction ratios. Those too large to be entirely included in one exposure are filmed beginning in the upper left hand corner, left to right and top to bottom, as many frames as required. The following diagrams illustrate the method:



L'exemplaire filmé fut reproduit grâce à la générosité de:

Izaak Walton Killam Memorial Library  
Dalhousie University

Les images suivantes ont été reproduites avec le plus grand soin, compte tenu de la condition et de la netteté de l'exemplaire filmé, et en conformité avec les conditions du contrat de filmage.

Les exemplaires originaux dont la couverture en papier est imprimée sont filmés en commençant par le premier plat et en terminant soit par la dernière page qui comporte une empreinte d'impression ou d'illustration, soit par le second plat, selon le cas. Tous les autres exemplaires originaux sont filmés en commençant par la première page qui comporte une empreinte d'impression ou d'illustration et en terminant par la dernière page qui comporte une telle empreinte.

Un des symboles suivants apparaîtra sur la dernière image de chaque microfiche, selon le cas: le symbole  $\rightarrow$  signifie "A SUIVRE", le symbole  $\nabla$  signifie "FIN".

Les cartes, planches, tableaux, etc., peuvent être filmés à des taux de réduction différents. Lorsque le document est trop grand pour être reproduit en un seul cliché, il est filmé à partir de l'angle supérieur gauche, de gauche à droite, et de haut en bas, en prenant le nombre d'images nécessaire. Les diagrammes suivants illustrent la méthode.

taille  
du  
modifier  
une  
image

errata  
to

pelure,  
on à



32X

THE  
NOVA-SCOTIA CALENDER  
OR AN  
ALMANACK,

For the YEAR of the CHRISTIAN ERA,

1797.

And from the Creation of the World, according to Chronology,  
1796 being the first after Bissextile or Leap Year. And in the  
Thirty seventh Year of the Reign of his Majesty KING  
GEORGE the Third, containing 365 Days.

WHEREIN IS CONTAINED

The Eclipses of the Luminaries;	Equation of Time,
Sun and Moon's Rising and Setting,	Feasts and Fasts of the Church,
Moon's Place and Age,	Situations of the several Towns and
Time of High Water at Halifax,	Sessions in this Province, &c.
Moon's Apogee and Perigee,	&c. &c.

Calculated for the Meridian of HALIFAX in NOVA-SCOTIA,  
Lat.  $44^{\circ} 44'$  North, and 4 hours 14 minutes West Longitude  
from LONDON; and will serve without sensible Error, for  
any part of the Province.

By M. E. T. O. N. I. C. U. S.

Whose Souls the Furies Scold  
And car'd with hearts unknowing how to yield,  
Thus unlamented pass the Proud away,  
The Gaze of Rools, and pageant of the Day,  
So perish all, whose breast ne'er learn'd to glow  
For others Good, or melt at others wor. POPE.

HALIFAX:

Printed and sold by ANTHONY HENRY, at his Printing-Office,  
in Jackville Street, Corner of Graham-Street.

## Vulgar Notes for the Year 1797.

Dominical, or Sunday Letter A. Golden Number 18 Epact 1 Cycle of the Sun 14 Roman Indiction 15 Sundays after Epiphany 5 Septuagesima Sunday, Feb. 12 Ash Wednesday March 1	Full Moon before Easter, Ap. 10 Easter Sunday April 16 Rogation Sunday May 21 Ascension Day, May 25 Whitsunday, June 4 Trinity Sunday June 11 Sundays. after Trinity 24 Advent Sunday, December 8
---	--

### The Characters and Names of the Planets, &c.

☉ The Sun ☾ The Moon ☿ Mercury, ♀ Venus, ♁ The Moon's or any other Planet's Ascending Node. ♁ The Descending Node.	♂ Mars, ♃ Jupiter, ♄ Saturn, ♁ Georgian. ♁
---	--

### Aspects.

- ♁ Conjunction, or Planets situate in the same Longitude.
- ♁ Opposition, or Planets, situate in Longitudes differing six Signs from each other.
- Quartile, is when they are 90° distant from each other.
- △ Trine, is when they are 120° distant.
- \* Sextile, is when they are 60° distant.
- ∩ Semi sextile, is when they are 30° distant.
- ∪ Quincunx, is when they are five Signs, or 150° distant.

### The Signs of Zodiac.

♈ Aries, the Ram, ♉ Taurus, the Bull, ♊ Gemini, the Twins. ♋ Cancer, the Crab, ♌ Leo, the Lion, ♍ Virgo, the Virgin,	♎ Libra, the Balance, ♏ Scorpio, the Scorpion, ♐ Sagitarius, the Archer, ♑ Capricorn, the Goat, ♒ Aquarius, the Water bearer, ♓ Pisces, the Fishes.
---	--

- ♀ Venus, will be Morning Star, to the 28th May, thence Evening Star, to the end of the Year.
- ♃ Jupiter, will be an Evening Star to the 15th March, thence Morning Star to the 7th October, and thence Evening Star, to the end of the Year.

# The Names and Characters of the Twelve Signs

ARIES

TAURUS

CANCER

VIRGO

SCORPIO

CAPRICORN



GEMINI

LEO

LIBRA

SAGGITARIUS

AQUARIUS

PISCES

Eclipses of the Sun and Moon, for the Year 1797.

THERE will be Four Eclipses in this Year, Two of the Sun and Two of the Moon, in the following Order, Viz.

June 9th. MOON Eclipsed, invisible at Halifax.

June 24th. SUN Eclipsed invisible at Halifax, by reason of the Moon's great North Latitude, ☽ at oh. 12m. in Long. 3f. 3°. 19'. 43". This Eclipse will be visible in London, at 1h. 15½m. Digits Eclipsed 4°¼. on the Sun's North Limb. ☽'s Lat. 58' 9" North Ascending.

December 3d and 4th. MOON Eclipsed Visible and Total, if the Weather be clear.

	D	H	M	
Beginning	3	10	23	} At Night.
Beginning of Total Darkness	3	11	22	
Middle of the Eclipse	4	0	12	} In the Morning.
End of Total Darkness	4	1	3	
End of the Eclipse	4	2	2	
Duration of the Eclipse	0	3	39	} Apparent Time.
Digits Eclipsed 20°. 35' from South Side of ☾'s Shadow.				

December 18th. SUN Eclipsed invisible at Halifax. ☽ at 2h. 25' in the Morning in Long. 8f. 26°. 56'. ☽'s Lat. 1°. 13¼. South.

1  
2  
15

## Directions to Farmers and Gardeners.

AS some Springs are much earlier than others, the following directions ought not to be too literally adhered to in point of time; but may rather serve to point out the order in which things may succeed each other; but as to the precise time of beginning, the judgment of the planter must be in some measure regulated by the appearance of the Spring.

The last week in April, sow early pease, cabbage, parsnips, parley, onions, turnips, radishes, lettuce and mustard.

However, those mentioned for the last week in April, may be put in whenever the snow is gone, the frost out of the ground, and the earth so dry as not to be muddy, and the others succeed in their order.

The first week in May, sow oats, wheat and rye; also some early English beans, (and the main crop by the 20th or 21st); spinage and orrice; and by the 20th of May a few hills of cucumbers, and a few early bush beans.

The middle of May, sow hemp and flax; and any time between this and the 10th of June will do for potatoes; such as are planted about the first of June, are frequently the largest, but the earliest planted are as commonly the best to eat, being drier in consequence of their being more thoroughly ripe.

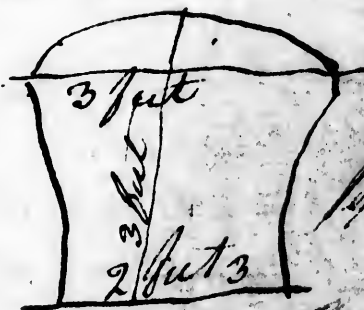
The first week in June, plant all sorts of kidney beans; also cucumbers, squashes and pumpkins.

The 20th of June, sow buckwheat; this is also a good time to sow in herd grass, clover, or any sort of grass seed, which is thought to succeed better if sowed in now with buckwheat, than in the spring with oats. Herds-grass that is sowed the latter part of June or through the whole of July, instead of running up, heading out, and ripening as that does which is earlier sown, spends the summer in spreading into a large bunch, and rooting firmly, by which it not only bears the severity of the winter, but sends up from each seed many more stalks the ensuing summer. The farmer should be careful to sow his clover, if possible, before the end of July; for it is very apt to be killed with the winter, if not well rooted, and it often happens that crops which come up well, late in the fall, are wholly killed, so that a single plant cannot be found the next summer.—The first week in July sow field turnips—the early Dutch may be sown as late as the 25th.—The 20th is a good time to sow winter wheat and rye, as by being sowed early it will be better rooted to stand the severity of the winter, and be more likely to escape a blast in earlier next summer. In the fore part of September, sow winter salad, which may then be cut any time in the winter when the snow is off.

Coy  
un  
No



10 January New York  
 23<sup>rd</sup> Jan 17<sup>th</sup> 1760 Fellen, Dollen  
 2<sup>nd</sup> Feb 30<sup>th</sup> for Liverpool  
 15 Feb by D Bond arrived



Back of High

Do not Bond Gimbrach  
 High  
 Small Trees

Beyond covered in cellar  
 under a Box

- 101 Pear
- 11 Plum of D Bond
- 111 Apple

car  
 old men  
 now  
 little  
 little  
 D.  
 Burn  
 hair

ness: -  
 the following  
 to point of  
 such things  
 beginning, the  
 lated by the  
 parsnips, par-  
 pril, may be  
 ground, and  
 succeed in their  
 also some early  
 (1st), spinage  
 cumpers, and  
 time between  
 as are plant-  
 out the earliest  
 a consequence  
 eans; also cu-  
 od time to sow  
 h is thought  
 in the spring  
 t of June or  
 ling out, and  
 e summer in  
 ch it not only  
 h feed many  
 areful to sow  
 is very apt to  
 ten happens  
 holly killed,  
 - The first  
 be sown as  
 winter wheat  
 to fr the  
 last  
 em

News from Ann about in a  
strip to Brimley I. land

4th Frost had to start to melt

5 Snow Wind SW

6 Snow at times all day E winds blow

7 0° - 9° Cold

8 1st Night Very cold humph

& clouds stopped with cold the

day fair & very cold

Thurs. 5 Day - calm Night

& cold - 9 40 clear & cold

11 Fair 12 Rain & Sleet 13 Snow

at times squally.

14 The man fair coming cloud with

snow in A.M. afternoon fair 16°

17th 9th Snow for 4th time in year

18. 19 Snow at times 20 11 10° at times

20 Cloudy & cold little snow

21 0° Snow settled more

Johnston & Robt walked over to Tenn

Bay to (Dufferin) 22° Heavy Gale

from NE much snow 23° fair Wind SWNW

from 24° fair weather 24 cold snow at times

25 a little snow 26 0° 27 Heavy 28

thaw with small rain 29 pleasant & warm

30 Squally Snow every wind cold

and cold - 31 Moderate cloudy 13th

1.	J	
	Fi	
	Fu	
	La	
	Ne	
	© en	
M	w	R
D	D	
1	A	11
2		D
3	3	
4	4	
5	5	
6	6	E
7	7	
8	A	11
9	9	(
10	2	3
11	4	d
12	5	(
13	6	St
14	7	
15	A	2d
16	2	
17	3	
18	4	Q
19	5	F
20	6	L
21	7	
22	A	3
23	2	
24	3	M
25	4	C
26	5	(
27	6	P
28	7	
29	A	4
30	2	K
31	3	cl



## II. FEBRUARY, hath XXVIII. Days. 1797.

First Quarter, Saturday the 4th Day at 9h. 58m. afternoon.

Full Moon, Saturday the 11th Day at 7h. 28m. morning.

Last Quarter, Saturday the 18th Day at 10h. 21m. forenoon.

New Moon, Sunday the 26th Day at 9h. 18m. afternoon.

☉ enters ♋ Friday 17th Day at 10h. 4m. night.

M	w	Remarkable days,	Aspects,	r.	☉	♂	☾	Place.	☾	r.	☾	H.	w.
D	D	weather, &c.	&c.						A.	H.	M.	H.	M.
1	4	7 <sup>th</sup> s fo. 6h. 33m. aftern.		7	11	5	5	Υ 20	5	10	15	12	6
2	5	Purif. of B.V. Mary. ♀ Sta.		7	10	5	18	4	6	10	4	12	55
3	6	Fine weather for ♂ & ♀		7	9	5	1	♁ 4	7	11	54	1	44
4	7	the Season.		7	8	5	14	21	♁	morn.	2	33	
5	A	5th Su. aft. Epi. Agatha.		7	7	5	27	58	9	0	55	3	22
6	2	(Days len. 9h. 46m.		7	6	5	11	Π 55	10	1	50	4	11
7	3	More freezing cold,		7	5	5	26	14	11	2	48	5	0
8	4	Perigee. and high winds,		7	4	5	10	♁ 52	12	3	40	5	49
9	5	and afterwards some rain.		7	2	5	25	46	13	4	30	6	38
10	6	A pleasant Snow storm.		7	1	5	10	Ω 48	14	5	28	7	28
11	7	Clo. fast 14m. 38f.		6	59	6	25	51	♁	rile.	8	16	
12	A	SEPTUAGESIMA SUN.		6	57	6	10	♁ 44	16	6	7	9	3
13	2	(Inf. ♂ ☉ ♀ D. le. 10. 6.		6	55	6	25	19	17	6	56	9	50
14	3	VALENTINE.		6	53	6	9	♁ 29	18	7	54	10	37
15	4	7 <sup>th</sup> s fat 1h. 50m. morn.		6	51	6	23	11	19	8	48	11	24
16	5	More snow or rain,		6	49	6	6	♁ 25	20	9	45	12	11
17	6	with frequent		6	48	6	19	12	21	10	48	12	58
18	7	changes of weather.		6	47	6	1	♁ 36	♁	11	50	1	45
19	A	SEXAGESIMA SUN.		6	45	6	13	43	23	morn.	2	32	
20	2	♁ Sta. (Day's l. 10h. 30m.		6	43	6	25	37	24	1	6	3	19
21	3	7 <sup>th</sup> s fo. 5h. 14m. aft.		6	41	6	7	♁ 25	25	2	9	4	6
22	4	♁ Apo. Very cold about this		6	39	6	19	11	26	3	21	4	53
23	5	♁ St. Oct. morn. time.		6	38	6	0	♁ 59	27	4	28	5	40
24	6	♁ St. Mar. Pr. Adol.		6	36	6	12	54	28	5	19	6	27
25	7	♁ St. Valentine b. 1774.		6	35	6	24	58	29	6	4	7	14
26	A	QUINQUAGESIMA SUN.		6	34	6	7	♁ 12	♁	fets.	8		
27	2	(Day's l. 10h. 52m.		6	33	6	19	38	1	7	10	8	
28	3	or rain.		6	32	6	2	Υ 15	2	8	20	9	

*Lamp*  
*Lamb*  
*Quail*  
*Hills*

1  
2  
3  
4  
5  
6  
7  
8  
9  
10  
11  
12  
13  
14  
15  
16  
17  
18  
19  
20  
21

Days. 1797.

n. afternoobn.  
n. morning.  
: 1 m. forenoon  
n. afternoobn.  
ght.

r.	s.	H.	W.
H.	M.	H.	M.
10	15	12	6
10	4	12	55
11	54	1	44
morn.	2	33	
0	55	3	22
1	50	4	11
2	48	5	0
3	40	5	49
4	30	6	38
5	28	7	28
rile.	8	8	16
6	7	9	3
6	56	9	50
7	54	10	37
8	48	11	24
9	45	12	11
10	48	12	58
1	50	1	45
norn.	2	32	
1	6	3	19
2	9	4	6
3	21	4	53
4	28	5	40
5	19	6	27
6	4	7	14
ets.	8	8	
10	8		
20	9		

- 1st Cloud Wind Not South Run yd...
- 2 Rain Wind S. P. High Lead NW
- 3 Very fair last night Snow had all  
melt almost gone view transparent  
& frog as low as 70 yds this side  
Pink near Bay N side
- 4th Squalls Snow at times  
frequent more hunting
- 5 fair & pleasant
- 6 Rain at times Squalls  
arrived from N of us at night
- 7 Night Blue had S. & West
- 8 Fair & pleasant
- 9 Cloudy Small rain at times
- 10 Fair Weather moderate
- 11 Ditto fine evening
- 12 Rainy day Snow all gone
- 13 Rainy day Bad weather  
wind East fast Night of Blue had
- 14 Rainy weather at times Wind East  
only the River totally broken up
- 15 Rainy weather at times Snow at  
times wind Easterly
- 16 Snow at times Wind N East  
Doct. Bennett Geo Rowland yam m
- 17 Fair last night Snow heavy  
Gale from N East
- 18 Fair Weather very cold S.W
- 19 moderate with snow at  
9 AM wind N.W clear weather
- 20 Fair day N.W Snow goes fast  
Fair cloudy
- 21 Cloudy W Wind Scudding  
Geo Rowland for yam m

See  
 journal  
 & diary  
 orig.  
 27th

... and other very clear

- 21 Cloudy & low weather
- 22 Cold box head
- 23 Go - ~~fair~~ W - Suddy
- 24 Rain W South westerly
- 25 Thunder NW Sea Sailed 7/12
- 26 Snow Storm Every Clear Sea
- 27 S - - - Snow
- 28 S - - - Night Clear

- 1 Fair - Fair & Pleasant
- 2 S - S - Slip & Ice
- 3 Pleasant & warm for the season
- 4 Snow at times all day being rain
- 5 D - Cold & soft weather
- 6 D - at times poor head (at night)
- 7 D - rain sent almost to snow, with the  
at Blew's hand
- 7 A rainy wind still very slippery  
win 13 or 14 on to the Island NW
- 8 Cold & snow squalls wind N NW SEA
- 9 Light snow squalls wind N & Nathy
- 10 Fair weather wind NW cold and a  
little snow
- 11 Fair & pleasant but cold rain on last night
- 12 Low bar on gain Fair with NW
- 13 Fairly weather W & S westerly in all
- 14 D - - - -
- 15 D - - - - Seen Arrived
- 16 Fair ... Wind westerly
- 17 D - - - - in distance
- 18 D - - - - D - Noy when night
- 19 D - - - - Bond left us this
- 20 Fair weather
- 21 Cloudy weather 22 Rain 23 Cloudy 24 High  
low in part by 4th hour

Sample

Lamb

Swat  
Milk

27	28	29	30	31
III.	III.	III.	III.	III.
Fin	Fin	Fin	Fin	Fin
Fu	Fu	Fu	Fu	Fu
La	La	La	La	La
Ne	Ne	Ne	Ne	Ne
○	○	○	○	○
M	w	R		
D	D	D		
1	4	A		
2	5	F		
3	6	C		
4	7			
5	A	if		
6	2	6		
7	3	P		
8	4	J		
9	5	C		
10	6	8		
11	7	7		
12	A	2d		
13	2			
14	3	A		
15	4	C		
16	5			
17	6	S		
18	7	E		
19	A	3d		
20	2	C		
21	3	B		
22	4			
23	5			
24	6			
25	7	A		
26	A	4		
27	2			
28	3			
29	4			
30	5	C		
31	6			



1790-1791 Fair Westerly Wind  
 9° 20' 5  
 Clouds Snow Rain & Mists

1 Fair  
 2 D°  
 3 D°  
 4 Cloudy  
 5 Snow  
 6 S°  
 7 S°  
 8 S°  
 9 S°  
 10 S°  
 11 S°  
 12 Fair  
 13 Unknown  
 14 Fair  
 15 Snow  
 16 Snow  
 17 Fair  
 18 D°  
 19 Snow  
 20 Cloudy  
 21 Cold  
 22 Fair  
 23 Cloudy  
 24 Rain  
 25 Fair  
 26 D°  
 27 D°  
 28 D°  
 29 D°  
 30 Duly

IV. APRIL, hath XXX. Days. 1797.

First Quarter, Tuesday the 4th Day, at 8h. 47m. forenoon.  
 Full Moon, Tuesday the 11th Day, at 5h. 29m. morning.  
 Last Quarter, Wednesday the 19th Day, at 1h. 25m. morn.  
 New Moon, Wednesday the 26th Day, at 6h. 40m. aftern.  
 ☉ enters ♈, Wednesday, the 19th Day, at 11h. 2m. foren.

M	W	Remarkable days, Aspects,	r.	☉	s.	☾	☽	r.	☾	s.	H.	W.
D	D	weather, &c. &c.				Place.	A.	H.	M.	H.	M.	M.
1	7	All Fools. Pleasant weather	5	42	7	2 II	5	4	10	36	11	47
2	A	5th SUN. in Lent. Day's	5	40	7	18	58	5	11	36	12	39
		(len. 12h. 40m.)	5	38	7	2 ☽	54	6	morn.	1	31	
4	3	St. AMBROSE. Some re-	5	37	7	14	57	☽	0	35	2	23
5	4	☾ Peri. (freshing showers	5	35	7	1 ☽	5	8	1	24	3	15
6	5	*'s set 10h. 48m. aftern.	5	34	7	15	18	9	2	4	4	7
7	6	about these days, then	5	32	7	29	32	10	2	39	4	59
8	7	☽ pleasant again.	5	30	7	13 ☽	46	11	3	6	5	51
9	A	6th SUN. in Lent. Palm Sun.	5	28	7	27	54	12	3	36	6	43
		(Day's len. 13h. 4m.)	5	27	7	11 ☽	52	13	4	4	7	35
11	3	*'s rise 5h. 58m. morning.	5	26	7	25	35	☽	rise.	8	27	
12	4	Now pleasant	5	24	7	9 ☽	0	15	7	44	9	13
13	5	again.	5	23	7	22	5	16	8	50	10	0
14	6	GOOD FRIDAY.	5	21	7	8 ↑	49	17	9	58	10	46
		More rain.	5	19	7	17	15	18	10	55	11	33
16	A	EAST. DAY. D.l. 13. 26.	5	17	7	29	5	19	11	56	12	19
17	2	Easter Monday. Cl. fl. 39f.	5	16	7	11 ☽	23	20	morn.	1	6	
18	3	Easter Tuesday. ☽ Apogee.	5	15	7	23	14	21	0	36	1	53
19	4	Alphege. Some foggy	5	13	7	5 ☽	4	☽	1	26	2	40
20	5	weather may be expected.	5	11	7	16	56	23	2	5	3	27
21	6	*'s to. 1h. 37m. aftern.	5	10	7	28	58	24	2	41	4	14
22	7	Sup. ☽ ☽ 4h. 46m. aftern.	5	9	7	11 ☽	13	25	3	10	5	1
23	A	1st SUN. af. East. St. George.	5	8	7	23	44	26	3	42	5	47
		(Day's len. 13h. 44m.)	5	6	7	6 ☽	34	27	4	12	6	34
25	3	St. MARK. Prs. MARY b.	5	5	7	19	54	28	4	44	7	21
26	4	*'s set 9h. 34m. aft. (1776.	5	3	7	3 ☽	13	☽	sets.	8	9	
27	5	Vic. C. 1746.	5	2	7	16	59	1	8	40	8	59
28	6	Some foggy weather.	5	0	7	0 ☽	58	2	9	44	9	50
29	7	☽. fl. 2m. 54f. (14h. 4m.)	4	59	8	15	7	3	10	38	10	41
30	A	2d SUN. af. East. Day's len.	4	58	8	29	21	4	11	35	11	3

8  
 9  
 10  
 11  
 12  
 13  
 14  
 15  
 16  
 17  
 18  
 19  
 25  
 26  
 27  
 28  
 29  
 30



1797.

7m. forenoon.  
 11m. morning.  
 1h. 25m. morn.  
 40m. aftern.  
 1h. 2m. foren.

r.	s.	H.	W.
H.	M.	H.	M.
4	10	36	11 47
5	11	36	12 39
6	morn.	1	31
7	0	35	2 23
8	1	24	3 15
9	2	4	4 7
10	2	39	4 59
11	3	6	5 51
12	3	36	6 43
13	4	4	7 35
14	rife.	8	27
15	7	44	9 13
16	8	50	10 0
17	9	58	10 46
18	10	55	11 33
19	11	56	12 19
20	morn.	1	6
21	0	36	1 53
22	1	26	2 40
23	2	5	3 27
24	2	41	4 14
25	3	10	5 1
26	3	42	5 47
27	4	12	6 34
28	4	44	7 21
29	sets.	8	9
30	8	40	8 59
31	9	44	9 50
32	10	38	10 41
33	11	35	11 3

8th Squalls Snow all Day & Cold N<sup>W</sup> & E  
 9 Do Do Wind SE much Snow last Night  
 and a strong Easterly Gale  
 10 Snow at times & Cold Wind N<sup>W</sup> & E  
 11 Much Snow on the Ground but gone off  
 miserably all the morning family <sup>gathered</sup>  
 12 Snow Squalls all in the morning, Wind at  
 NW 13 low & hard. Steam h. h. h. sailed at  
 10 O'clock. A m also William, in the Am  
 Clear but Cold. <sup>hazy</sup> in Hetch on last Night  
 13 Fair but Cold, Snow not gone <sup>Wind</sup> <sup>blow</sup> <sup>blow</sup>  
 14 last Night strong Gale or East & Cloudy at  
 10 O'clock Snow Squalls till 4 O'clock Clear N<sup>W</sup>  
 11<sup>m</sup> Steam h. h. h. A m 2 Spoon & sailed this  
 morning - at 11 low hard from N<sup>W</sup> & E above  
 15 Fair W<sup>ind</sup> Northwaly but cold, blowing all Snow  
 16 Cold Snow Squalls N<sup>W</sup> & E  
 17 Fair but cold Wind N<sup>W</sup> & E  
 in the Night, going off in the Day  
 18 Cold but fair till evening when cloudy N<sup>W</sup>  
 19 Snow signals wind N<sup>W</sup> & cold strong fresh  
 20 fair & clear & spring  
 21 do - pleafant & pleafante  
 22 do - do -  
 23 do - do -  
 24 do - do -  
 25 do - do -  
 26 do - do -  
 27 do - do -  
 28 do - do -  
 29 do - do -  
 30 Cloudy & rather Cold -  
 31 do - do -

Graves Schoon from  
 N<sup>Y</sup> Yesterday

Good Fair

1  
2  
3  
4  
5  
6  
7  
8  
9  
10  
11  
12  
13  
14  
15  
16  
17  
18  
19  
20  
21  
22  
23  
24  
25  
26  
27  
28  
29  
30

1. Clear Rain Wind East by  
 2. S. D. at times S  
 3. S. D. Cloudy — S  
 4. Moderate — NW  
 5. D. — Cloudy W. W. by Barry  
 6. S. — — East by  
 7. S. — —  
 8. Rather Cold  
 9. S. — —  
 10. In this morning —  
 11. Pleasant Showers —  
 12. Moderate Cloudy —  
 13. Rain — Warm  
 14. Cloudy Some Rain  
 15. Fair — Fair Weather  
 16. Cloudy Fair Weather  
 17. Fair a Shower this Morning  
 18. Fair & Pleasant  
 19. S. — D. Raining Cloudy S. S.  
 20. Rain & Rather Cold  
 21. Disagreeable had some East by  
 22. S. — —  
 23. S. — —  
 24. High Low weather N East by  
 25. Cloudy Dark Cold Weather N  
 26. Fair & Moderate  
 27. Cloudy — S. S.  
 28. S. — & Low weather  
 29. Rather Cold — Light Wind  
 30. Cloudy — East  
 31. Cloudy — East

V.	Fi	Ful	La	Ne
M	w	R		
D	D			
1	2	St		
2	3	)		
3	4	In		
4	5			
5	6	Cl		
6	7			
7	A	3d		
8	2			
9	3			
10	4			
11	5			
12	6	Cl		
13	7			
14	A	4th		
15	2			
16	3			
17	4			
18	5	C		
19	6	Q		
20	7			
21	A	5th		
22	2	(S)		
23	3	Pl		
24	4	Cl		
25	5	Al		
26	6	Al		
27	7	d		
28	A	Su		
29	2	K		
30	3			
31	4	Cl		

V. MAY, hath XXXI. Days. 1797.

First Quarter, Wednesday the 3d Day, at 2h. 34m. aftern.  
 Full Moon, Wednesday the 10th Day, at 5h. 42m. aftern.  
 Last Quarter, Thursday the 18th Day, at 7h. 28m. aftern.  
 New Moon, Friday the 26th Day, at 4h. 20m. morning.

☉ enters II, Saturday the 20th Day, at 11h. 32m. forenoon.

M	W	Remarkable Days, Aspects,	r. ☉	's	☾	r. ☽	☾	H. W.
D	D	weather, &c. &c.	Place	A.	H.	M.	H. M.	H. M.
1	2	St. Philip and James.	4 57 8	13	☽	37	5	morn. 1 23
2	3	Perigee.	4 56 8	27	51	6	0 21	2 14
3	4	Inv. of the Cross,	4 55 8	12	☽	3	0 52	3 5
4	5		4 54 8	26	10	8	1 21	3 56
5	6	Clo. slow 3m. 35f. 7 <sup>th</sup>	4 52 8	10	☽	10	1 50	4 47
6	7	(set 8h. 55m. afternoon.	4 51 8	24	3	10	2 17	5 37
7	A	3d SUN. after East. Days	4 50 8	7	☽	45	11 2 45	6 27
8		(len. 14h. 20m.	4 49 8	21	16	12	3 10	7 7
9	3	A Cold May storm	4 48 8	4	☽	34	3 40	7 47
10	4	may be expected now, or	4 46 8	17	☽	37	rise.	8 20
11	5	about the next Change.	4 45 8	0	☽	24	7 16	9 5
12	6	Clo. slow 3m. 57f.	4 44 8	12	57	16	8 17	9 50
13	7	(Days len. 14m. 38m.	4 42 8	25	14	17	9 18	10 35
14	A	4th SUN. af. East. St. Peters	4 41 8	7	☽	20	10 21	11 20
15	2	(& Miquilon, tak. by Gen.	4 40 8	19	17	19	11 24	12 6
16	3	Apogee. (Ogilvie 1793.	4 39 8	1	☽	8	20	morn. 12 50
17	4	More rain, and then plea-	4 38 8	12	58	21	0 24	1 35
18	5	Clo. slow 3m. 54f. fant.	4 37 8	24	42	☽	0 54	2 20
19	6	Queen Charlotte, b. 1744.	4 36 8	6	☽	54	1 21	3 6
20	7		4 35 8	19	9	24	1 50	3 51
21	A	5th SUN. aft. East. Rog.	4 34 8	1	☽	42	2 18	4 36
22	2	(Sun. Days len. 14h. 52m.	4 33 8	14	35	26	2 50	5 21
23	3	Pleasant growing weather	4 32 8	27	51	27	3 21	6 6
24	4	Cl. fl. 3m. 30f. about this	4 31 8	11	☽	30	3 51	6 50
25	5	Ascen. Day. Holy Thursday	4 30 8	25	32	29	4 14	7 35
26	6	Aug. 1st Abp. Cant. time.	4 29 8	9	☽	51	sets.	8 20
27	7	☽ ☽ 6h. 18m. afternoon.	4 28 8	24	25	1	8 26	9 12
28	A	SUN. aft. Ascension-Day.	4 28 8	9	☽	5	9 22	10 4
29	2	K. Char. II. restored.	4 28 8	23	46	3	10 9	10 56
30	3	☽ Perigee. More rain,	4 26 8	8	☽	21	10 49	11 48
31	4	Clo. slow 2m. 40f.	4 25 8	22	47	5	11 23	12 4

By Barry  
 ming  
 P.P.  
 Saturday

By Barry

VI. JUNE, hath XXX Days, 1797.

First Quarter, Thursday the 1st Day, at 8h. 3m. night.  
 Full Moon, Friday the 9th Day, at 7h. 12m. morning.  
 Last Quarter, Saturday the 17th Day, at 10h. 58m. foren.  
 New Moon, Saturday the 24th Day, at oh. 12m. afternoon.  
 ☉ enters ♄ Tuesday the 20th Day, at 8h. 15m. afternoon.

M	w	Remarkable days, Aspects,	r.	☉	s.	☾'s	☾	r.	☾	s.	H.	w
D	D	weather, &c.&c.				Place.	A.	H.	M.	H.	M.	
1	5	Nicomedē. 7 <sup>s</sup> f. 7h. 13m. a.	4	24	8	6♃ 23	6	11	54	1	32	
2	6	Pleasant growing weather.	4	24	8	20 57	7	morn.		2	24	
3	7	♃ Stat. (D. len. 15h. 14m.)	4	23	8	4♄ 38	8	0	18	3	16	
4	A	Whitfun. K. Geo. III. b. 1738.	4	23	8	18 4	9	0	46	4	8	
5	2	Whit-Mon. Pr. Ern. Aug. b.	4	22	8	1♄ 14	10	1	11	5	0	
6	3	Whit-Tuef. (1771. Boniface)	4	21	8	14 8	11	1	39	5	52	
7	4	More pleasant	4	20	8	26 50	12	2	9	6	44	
8	5	showers, with	4	20	8	9♄ 18	13	2	38	7	36	
9	6	☾ Eclipsed invisible.	4	20	8	21 35	13	☾	rise.	8	20	
10	7	Thunder.	4	20	8	3♃ 42	15	8	50	9	8	
11	A	Trinity SUN. St. Barnabas.	4	20	8	15 42	16	9	20	9	56	
12	2	☾ Apeg. (D. len. 15h. 20m.)	4	20	8	27 35	17	10	16	10	44	
13	3	Now comes a spell of fine	4	20	8	9♃ 25	18	10	50	11	32	
14	4	growing weather, if I	4	19	8	21 15	19	11	26	12	20	
15	5	am not mistaken.	4	19	8	3♄ 10	20	11	58	1	8	
16	6	Inf. ♂ ♃ 3h. afternoon.	4	19	8	15 12	21	morn.		1	56	
17	7	St. Alban. Cl. fast. 3f.	4	19	8	27 26	☾	0	8	2	44	
18	A	1st SUN. af. Trin. D. len.	4	19	8	9♃ 56	23	0	37	3	32	
19	2	(15h. 22m.)	4	19	8	22 46	24	1	1	4	20	
20	3	Tr. of Edw. K. of W. Sax.	4	18	8	6♃ 0	25	1	44	5	8	
21	4	(longest Day)	4	18	8	19 40	26	2	19	5	56	
22	5	♃ ☉ 8h. forenoon.	4	18	8	3♄ 46	27	2	49	6	44	
23	6	Cl. fast 1m. 49f.	4	18	8	18 15	28	3	21	7	32	
24	7	N. of St. John Bap. ☾ ec. inv.	4	18	8	3♄ 3	☾	sets.		8	20	
25	A	2d SUN. af. Trin. D. len.	4	18	8	18 5	1	8	30	9	10	
26	2	☾ Perigee. (15h. 24m.)	4	18	8	3♄ 7	2	9	10	10	0	
27	3	♃ Stationary. Pleas <sup>2</sup>	4	18	8	18 5	3	9	44	10	50	
28	4	Cl. f. 2m. 52f. showe <sup>2</sup> id	4	18	8	2♃ 50	4	10	24	11	40	
29	5	St. Peter. growing weath. r.	4	19	8	17 15	5	11	4	12	30	
30	6	☉ in Aph. at 7h. 19m. even.	4	19	8	1♄ 19	6	11	44	1	20	

*1 Crow & Cloudy with rain afternoon*

1797.

night.  
 morning.  
 5m. foren.  
 m. afternoon.  
 n. afternoon.

r.	☾	s.	H.	W
H.	M.	H.	M.	
11	54	1	32	
morn.		2	24	
0	18	3	16	
0	46	4	8	
1	11	5	0	
1	39	5	52	
2	9	6	44	
2	38	7	36	
rife.		8	20	
8	50	9	8	
9	20	9	56	
10	16	10	44	
10	50	11	32	
11	26	12	20	
11	58	1	8	
morn.		1	56	
0	8	2	44	
0	37	3	32	
1	1	4	20	
1	44	5	8	
2	19	5	56	
2	49	6	44	
3	21	7	32	
fets.		8	20	
8	30	9	10	
9	10	10	0	
9	44	10	50	
10	24	11	40	
11	4	12	30	
11	44	1	20	

23 July 1670 Paid Charles's  
Father 2 Dollars to the above date

VII.  
P  
F  
L  
M  
P  
C

M	w
D	D
1	7
2	A
3	2
4	3
5	4
6	5
7	6
8	7
9	A
10	2
11	3
12	4
13	5
14	6
15	7
16	A
17	2
18	3
19	4
20	5
21	6
22	7
23	A
24	2
25	3
26	4
27	5
28	6
29	7
30	A
31	2

date

VII. JULY, hath XXXI Days. 1797.

First Quarter, Saturday the 1st Day, at 2h. 40m. morning.  
 Full Moon, Saturday the 8th Day, at 9h. 53m. night.  
 Last Quarter, Sunday the 16th Day, at 11h. 54m. night.  
 New Moon, Sunday the 23d Day, at 7h. 11m. afternoon.  
 First Quarter, Sunday the 30th Day, at 11h. 53m. forenoon.  
 ☉ enters ♋ Saturday the 22d Day, at 7h. 7m. morning.

M	w	Remarkable days, Aspects,	r.	☉ s.	☽ s.	☾ s.	H.	w.	
D	D	weather, &c. &c.			Place.	A.	H.	M.	
1	7	*s fo. 8h. 54m. morning.	4	19	8	14	59	6 morn.	2 10
2	A	3d SUN. af. Trin. Vis. B. V.	4	20	8	28	19	8 0 3	3 0
3	2	(Mary. D. len. 15h. 20m.	4	20	8	11	M	14 9 0 35	3 50
4	3	Clo. fast 4m.	4	21	8	23	53	10 1 5	4 40
5	4	<i>Pleasant growing</i>	4	21	8	6	f	18 11 1 35	5 30
6	5	<i>weather. Very hot.</i>	4	22	8	18	31	12 2 15	6 20
7	6	<i>More showers.</i>	4	22	8	0	V	36 13 2 55	7 10
8	7	St. Killan.	4	23	8	12	33	☉ rise.	8 0
9	A	4th SUN. after Trinity.	4	23	8	24	26	15 8 24	8 48
10	2	☾ Apog. (D. l. 15h. 14m.	4	24	8	6	m	17 16 9 18	9 37
11	3	Clo. fast 5m. 5f.	4	25	8	18	7	17 9 42	10 26
12	4	<i>Fine growing</i>	4	26	8	29	59	18 10 12	11 15
13	5	<i>weather.</i>	4	27	8	11	X	55 19 10 43	12 4
14	6		4	28	8	23	59	20 11 15	12 53
15	7	Swithin B.	4	29	8	6	Y	13 21 11 48	1 42
16	A	5th SUN. after Trinity.	4	30	8	18	42	☾ morn.	2 39
17	2	(Days len. 15h. 0h.	4	31	8	1	☽	28 23 0 20	3 28
18	3	<i>Pleasant</i>	4	32	8	14	36	24 1 0	4 17
19	4	<i>showers.</i>	4	33	8	28	9	25 1 38	5 6
20	5	Margaret.	4	34	8	12	II	9 26 2 28	5 55
21	6	*s fo. 7h. 33m. morning.	4	35	8	26	35	27 3 18	6 43
22	7	Magdalen. Cl. fast 6m.	4	36	8	11	☽	34 28 4 8	7 32
23	A	6th SUN. after Trinity.	4	37	8	26	30	☾ sets.	8 20
24	2	☾ Perig. Pretty full Tides.	4	38	8	11	Ω	45 1 7 30	9 7
25	3	St. James. Dog Days begin.	4	39	8	26	58	2 8 3	9 54
26	4	St. Anne. 7*s ri. 10h. 57m. m.	4	40	8	11	☾	59 3 8 40	10 41
27	5	<i>More rain about</i>	4	40	8	26	23	4 9 12	11 28
28	6	<i>Cl. fast 6m. 3f. this time.</i>	4	41	8	10	5	5 9 44	12 15
29	7	(Days len. 14h. 36m.	4	41	8	25	32	6 10 24	1 2
30	A	7th SUN. after Trinity.	4	42	8	7	M	56 D 10 54	1 49
31	2	<i>Pleasant growing weather.</i>	4	43	8	20	49	3 11 11	2 36

VIII. AUGUST, hath XXXI Days. 1797.

Full Moon, Monday the 7th Day, at 1h. 17m. afternoon.  
 Last Quarter, Tuesday the 15th Day, at 10h. 39m. forenoon.  
 New Moon, Tuesday the 22d Day, at 2h. 19m. morning.  
 First Quarter, Tuesday the 29th Day, at 0h. 40m. morning.  
 ☉ enters ♍ Tuesday the 22d Day, at 1h. 31m. afternoon.

M	D	Remarkable days, Affects, weather &c. &c.	☉	♌	♍	♎	♏	H. W.
			°	Place.	A.	I. M.	H. M.	
1	3	Lammas Day. Δ ☾ ♀	4 44 8	3 ♄ 21	9	11 16	3 23	
2	4	Spell of delightful growing weather.	4 45 8	15 37	10	11 57	4 10	
3	5		4 46 8	27 41	11	morn.	4 57	
4	6	Clo. fast 5m. 39f.	4 47 8	9 ♃ 37	12	0 44	5 44	
5	7	(D. len. 14h. 22m.)	4 48 8	21 29	13	1 39	6 31	
6	A	8th SUN. after Trinity.	4 49 8	3 ♃ 18	14	2 45	7 18	
7	1	Name of Jesus. ☾ Apogee.	4 50 8	15 9	15	☉ ris.	8 5	
8	3	♃ Stationary.	4 52 8	27 216	7	7 46	8 54	
9	4	♄ ☉ ♀	4 53 8	8 ♃ 58	17	8 14	9 43	
10	5	St. Lawrence.	4 54 8	21 1	18	8 50	10 32	
11	6	Clo. fast 4m. 44f.	4 55 8	3 ♃ 11	19	9 5	11 21	
12	7	Pr. of Wales, born 1762.	4 56 8	15 30	20	9 45	12 10	
13	A	9th SUN. after Trinity.	4 57 8	28 2	21	10 20	12 59	
14	2	(D. len. 14h. 6m.)	4 58 8	10 ♃ 48	22	11 0	1 48	
15	3	More rain, about this quarter	4 59 8	23 58	11	11 40	2 37	
16	4	Pr. Fred. D. of York, born	5 0 7	7 ♃ 17	24	morn.	3 26	
17	5	Clo. fast 3m. 36f. (1763.)	5 2 7	21 6	25	0 30	4 15	
18	6	Pleasant growing weather.	5 4 7	5 ♃ 21	26	1 15	5 4	
19	7	(D. len. 13h. 46m.)	5 5 7	19 58	2	2 10	5 53	
20	A	10th SUN. aft. Trin. ☾ Per.	5 7 7	4 ♃ 56	28	3 10	6 42	
21	2	Pr. W. Henry, D. of Cla.	5 8 7	20 6	29	4 10	7 31	
22	3	Pretty full tid. (rence b. 1765.)	5 10 7	5 ♃ 19	19	☾ set.	8 20	
23	4	Perhaps some show rs with	5 12 7	20 24	1	7 20	9 8	
24	5	St. Bartholomew. Thunder.	5 14 7	5 ♃ 10	2	7 45	9 56	
25	6	(5. 15.)	5 16 7	19 32	3	8 21	10 44	
26	7	Clo. fast 1m. 23f. 7*5f.	5 18 7	3 ♃ 24	4	8 45	11 32	
27	A	11th SUN. aft. Trin. D. len.	5 19 7	16 47	5	9 10	12 20	
28	2	St. Augustine. (13h. 22m.)	5 21 7	29 42	6	9 43	1 8	
29	3	Now for a delightful spell of pleasant and agreeable	5 22 7	12 ♄ 14	10	10 21	1 56	
30	4	of pleasant and agreeable	5 23 7	24 28	8	11 8	2 44	
31	5	Clo. slow 6f. weather.	5 25 7	6 ♃ 29	9	11 52	3 32	



146

~~125~~

261

319. 17. 6

58. 17. 6

30

33 : 8. 7

17

~~92. 6. 1~~

25. 9. 1

ys. 1797.

afternoon.  
9m. forenoon.  
morning.  
om. morning.  
a. afternoon.

	f.	s.	H.	W.
	M.	H.	M.	
9	11	16	3	23
0	11	57	4	20
1	morn.		4	57
2	0	44	5	44
3	1	39	6	31
4	2	45	7	18
5	rif.		8	5
6	7	46	8	54
7	8	14	9	43
8	8	50	10	32
9	9	5	11	21
0	9	45	12	10
1	10	20	12	59
2	11	0	1	48
3	11	40	2	37
4	morn.		3	26
5	0	30	4	15
6	1	15	5	4
7	2	10	5	53
8	3	10	6	42
9	4	10	7	31
0	fet.		8	20
1	7	20	9	8
2	7	45	9	56
3	8	21	10	44
4	8	45	11	32
5	9	10	12	20
6	9	43	1	8
7	10	21	1	56
8	11	8	2	44
9	11	52	3	32

X. S

Full

Last

New

Fir

© ent

[w Re  
D]

6 G

7 L

A 12

2 D

3 6

4

5 E

6 N

7 C

A 13

2 7\*

3

4 H

5 C

6 C

7 7\*

A 14

2

3 M

4 C

5 S

6 K

7

A 15

2

3 S

4

5 S

6 S

7 S

**IX. SEPTEMBER, hath XXX Days, 1797.**

Full Moon, Wednesday the 6th day at 4h. 53m. morn.  
 Last Quarter, Wednesday 13th day at 7h. 36m. Afternoon.  
 New Moon, Wednesday 20th day at 10h. 37m. forenoon  
 First Quarter, Wednesday the 27th day at 5h, 17m. aftern.  
 ☉ enters ♋ Friday 22d day at 10th. forenoon.

D	Remarkable days, Aspects, Weather, &c.	r.	☉	☽	☾	☿	♁	♂	♀	H. W.
					Place.	A.	H.	M.	H.	M.
6	Giles. 7 <sup>th</sup> r. 8h. 37m. aft.	5	27	7	18	♄	22	10	morn.	4 20
7	London burnt 1666, O. S.	5	29	7	0	♃	11	11	0 50	5 8
A	12th SUN. aft. Trin. ☾ Apo.	5	31	7	12		12	1	57	5 56
2	D. days end. (D. l. 12. 58.	5	32	7	23	53	13	3	5	6 44
3	☉ ☽ Serene, pleasant weather.	5	34	7	7	♃	52	14	4 15	7 32
4	Enurhus.	5	36	7	17	57	☉		rife.	8 20
5	Nativity of B.V. MARY.	5	37	7	0	♃	10	16	7 12	9 11
6	Clo. fl. 3m. 10f.	5	39	7	12	32	17	7	47	10 5
7	13th SUN. aft. Trin. D. len.	5	40	7	25	3	18	8	23	10 52
A	7 <sup>th</sup> r. 8h. 5m. aft. (12. 36.	5	42	7	7	♄	45	19	9 10	11 44
2	More rain, and then pleasant again.	5	44	7	20	37	20	5	49	12 34
3	Holy Cross.	5	45	7	3	♁	47	21	10 26	1 25
4	Clo. slow 5m. 9f.	5	46	7	17	11	☾	10	56	2 16
5	7 <sup>th</sup> r. 7h. 43m. afternoon.	5	48	7	0	♄	53	23	11 22	3 7
6	14th S. af Trin. LAM. ☾ p.	5	49	7	14	55	24	11	52	3 57
7	(Day's len. 12h. 12m.	5	51	7	29	17	25	morn.	4 48	
A	Middling Tides.	5	53	7	13	♁	56	26	0 30	5 40
2	Cl. fl. 6m. 54f.	5	54	7	28	48	27	1	30	6 30
3	St. MATTHEW.	5	56	7	13	♁	42	28	2 30	7 20
4	K. GEO. III. Crown. 1761.	5	58	7	28	37	☾		sets.	8 10
5	Pretty high winds.	5	59	7	13	♁	17	1	6 48	8 57
6	15th SUN. aft. Trin.	6	0	6	27	36	2	7	14	9 44
7	(D. l. 11h. 56m.	6	1	6	11	♁	29	3	7 48	10 31
A	St. CYPRIAN.	6	2	6	24	54	4	8	32	11 18
2	Showers about this quarter.	6	3	6	7	♄	53	5	9 18	12 6
3	St. MICH. PRS. ROYAL, b.	6	5	6	20	28	6	10	13	12 52
4	St. Jerome. (1766.	6	7	6	2	♄	44	♄	11 12	1 39
5		6	9	6	14	56	8	morn.	2 26	
6		6	11	6	26	39	9	0	15	3 13
7		6	12	6	8	♃	29	10	1 10	4 0

X. OCTOBER, hath XXXI Days. 1797

Full Moon, Thursday the 5th Day, at 8h. 9m. afternoon.  
 Last Quarter, Friday the 13th Day, at 3h. 17m. morning.  
 New Moon, Thursday the 19th Day, at 9h. 5m. night.  
 First Quarter, Friday the 27th Day, at oh. 53m. afternoon.  
 ☉ enters ♍, Sunday, the 22d Day, at 6h. afternoon.

16<sup>th</sup> B Ship sailed

M	D	Remarkable days, Aspects, weather, &c. &c.	r.	☉	s.	☾	Place.	☾	r.	☾	s.	H. W.	H. M.	H. M.
1	A	6th S. af. TRI. Remigius.	6	13	6	20	☾	21	11	2	20	4	4	
2		(☾ Apo. D.l. 11h. 34m.	6	15	6	2	☾	17	12	3	30	5	3	
3		<i>pleasant spell of weather.</i>	6	17	6	14	21	13	4	40	6	21		
4		☽ ☽	6	19	6	26	36	14	5	50	7			
5		☽. flow 11m. 46f.	6	20	6	9	☽	2	☽		rise.	7	5	
6		☽*s. rif. 6h. 30m. aftern.	6	22	6	21	40	16	6	30	8	4		
7		☽ ☽ ☽. 46m. afternoon.	6	23	6	4	☽	17	7	15	9	3		
8	A	17th SUN. aft. TRIN.	6	25	6	17	30	18	8	0	10	2		
9	2	St. DENYS. (D.l. 11. 10.	6	26	6	0	☽	41	19	8	48	11	1	
10	3	<i>Pleasant weather continues.</i>	6	27	6	14	4	20	9	39	12			
11	4	☽*s. ri. 6h. 13m. aftern.	6	29	6	27	38	21	10	31	12	5		
12	5	☽. fl. 13m. 38f.	6	31	6	11	☽	24	22	11	22	1	4	
13	6	Transf. of K. EDW. Conf.	6	32	6	25	22	☽	morn.		2	4		
14	7	☽ Perigee. (D.l. 10h. 48m.	6	34	6	9	☽	32	24	0	10	3	3	
15	A	18th SUN. aft. TRIN.	6	36	6	23	53	25	1	3	4	2		
16	2	Maria Antonietta of France	6	37	6	8	☽	21	26	1	57	5	13	
17	3	Etheldred. (beheaded 1793.	6	39	6	22	51	27	2	49	6	4		
18	4	St Luke. <i>A storm about</i>	6	40	6	7	☽	19	28	3	50	6	5	
19	5	<i>this change, or I am</i>	6	41	6	21	38	☽	sets.		7	49		
20	6	<i>much mistaken.</i>	6	43	6	5	☽	40	1	5	50	8	3	
21	7	☽. fl. 15m. 22f.	6	44	6	19	23	2	6	30	9	21		
22	A	19th SUND aft. TRIN.	6	46	6	2	☽	43	3	7	14	10	7	
23	2	☽ Stat. (D.l. 10h. 28m.	6	47	6	15	40	4	8	1	10	5		
24	3		6	49	6	28	17	5	8	54	11	3		
25	4	K. GEO. III. Acces. Crisp.	6	50	6	10	☽	35	6	10	1	12	2	
26	5	K. GEO. III. Procl. 1760.	6	52	6	22	39	7	11	5	1	11		
27	6	☽. fl. 16m. 2f.	6	53	6	4	☽	34	☽	11	59	1	5	
28	7	St. Simon and Jude. ☽ Apo.	6	55	6	16	25	9	morn.		2	4		
29	A	20th SUN. aft. TRIN.	6	56	6	28	18	10	0	5	3	2		
30	2	(D.l. 10h. 8m.	6	57	6	10	☽	16	11	1	15	4	1	
31	3		6	59	6	22	24	12	2	30	5			

Snyder Sch<sup>r</sup> 27<sup>th</sup> N.Y.

ys. 1797

m. afternoon.  
7m. morning.  
5m. night.  
3m. afternoon.  
afternoon.

(r. (s. H. W  
A. H. M. H. M

11	2	20	4	4
12	3	30	5	3
13	4	40	6	21
14	5	50	7	8
15	6	30	8	4
16	7	15	9	38
17	8	0	10	20
18	8	48	11	18
19	9	39	12	
20	10	31	12	5
21	11	22	1	4
22	0	10	2	40
23	1	3	3	30
24	1	57	4	28
25	2	49	5	13
26	3	50	6	4
27	3	50	6	58
28	4	50	7	49
29	5	50	8	35
30	6	30	9	21
31	7	14	10	7
32	8	1	10	53
33	8	54	11	39
34	10	1	12	25
35	11	5	1	11
36	11	59	1	57
37	9	morn.	2	43
38	10	0	3	29
39	11	1	4	15
40	12	30	5	1

Stephen Skinner  
Shelburne  
Oct 17 1798

Tuesday Morning

Shelburne

John Skinner

1799

Shelburne

3

Handwritten notes on the right margin, including the word 'morn' and other illegible characters.

28 1/2 Libra T. M.B.  
 30 M. Sean sailed for H +  
 Lushum arrived  
 12<sup>th</sup> put the Hams in Cure  
 18 put 2 large hams in Cure

16<sup>th</sup> B Ship sailed

Hargraves sailed  
 9<sup>th</sup> M. Noice. Wind Dr. Moody  
 10 Johnston set out  
 Cold disagreeable weather till the 15<sup>th</sup>  
 at night when snow squalls and frost  
 gale at N.E.  
 16<sup>th</sup>  
 Violent snow storm much snow Johnston  
 arrived with 2 deserters in the evening N.E.  
 17<sup>th</sup> snow  
 17<sup>th</sup> snow to cloudy with snow squalls  
 19<sup>th</sup> cloudy Johnston this morning  
 for H. in Barge to borrow  
 20 Fair. Wind N.West  
 21 snow squalls & cloudy N.  
 22 Thompson from Baltimore  
 26 light snow cold  
 27 snow to low ground  
 28 snow squalls at times  
 29 Cloudy do  
 30 Fair

27  
 34  
 Full  
 Last  
 New  
 First  
 © en  
 Ren  
 D  
 4 All  
 5 Pr.  
 6 Prs  
 7 So  
 2 if  
 2 (P  
 3 Cl  
 4 Prs  
 5  
 6 Pe  
 7 St.  
 A 22  
 2 Br  
 3 Cl  
 4 R  
 5 7\*  
 6 H  
 7 1  
 A 2  
 2 E  
 3 C  
 4 C  
 5 S  
 6  
 7  
 A 2  
 2  
 3  
 4  
 5  
 6  
 7  
 A 2  
 2  
 3  
 4  
 5  
 6  
 7

27th Rachel came to work  
 3 Dollars month  
 NOVEMBER, hath XXX Days. 1797.

Full Moon, Saturday the 4th Day at 10h. 43m. forenoon.  
 Last Quarter, Saturday the 11th Day at 10h. 24m. forenoon.  
 New Moon, Saturday the 18th Day at 10h. 20m. forenoon.  
 First Quarter, Sunday the 26th Day at 9h. 55m. forenoon.  
 ☉ enters ♄ Tuesday 21st. Day at 2h. 16m. afternoon.

M	D	Remarkable days, Aspects, weather, &c. &c.	r.	☉	♋	♌'s		♍		♎		H. W.	
						Place.	A.	H.	M.	H.	M.		
1	4	All Saints. Cl. fl. 16m. 15l.	7	0	5	4	Υ	45	13	3	40	5	47
2	5	Pr. EDW. b. 1767. Π ♂ ♃	7	2	5	1	7	22	14	4	55	6	33
3	6	Prs. SOPHIA b. 1777.	7	3	5	0	♄	15	15	6	6	7	20
4	7	Some rain and high winds.	7	5	5	3	23	0	♄	rise.	8	6	
5	1	21st SUN. aft. TRI. Pow.	7	6	♄	6	47	17	5	40	8	58	
6	2	(Plot 1605. D. l. 9h. 48m.	7	7	5	0	Π	24	18	6	20	9	50
7	3	Clo. fl. 16m. 4l.	7	9	5	4	14	19	7	5	10	42	
8	4	Prs. AUG. SOPHIA. born.	7	10	5	8	♄	9	20	7	55	11	34
9	5	Pleasant for the season.	7	11	5	2	12	21	8	49	12	26	
10	6	Perhaps a small flurry of	7	12	5	6	♄	20	22	9	42	1	18
11	7	St. Martin. Peri. snow.	7	13	5	0	30	♄	10	41	2	10	
12	A	22d SUN. aft. TRI. D. le.	7	14	5	4	♄	41	24	11	38	3	2
13	2	Britius Bp. ♂ ♄ ♂ (9. 32.	7	15	5	1	7	50	25	morn.	3	54	
14	3	Clo. slow 15m. 13f.	7	16	5	2	♄	56	26	0	45	4	46
15	4	Rain with high winds about	7	17	5	6	55	27	1	43	5	38	
16	5	*s ri. 3h. 53m. af. this time.	7	19	5	0	♄	44	28	2	44	6	30
17	6	Hugh Bp. of Lincoln.	7	20	5	4	21	29	3	45	7	20	
18	7	(♄ ♄ ♃)	7	21	5	7	42	♄	sets.	8	10	8	10
19	A	23d SUN. aft. TRI. D. l. 9.	7	22	5	0	♄	47	1	5	30	8	54
20	2	EDM. K. & MART. (16.	7	23	5	3	35	2	6	28	9	38	
21	3	Clo. fl. 13m. 40f.	7	24	5	6	♄	6	3	7	30	10	18
22	4	Cecilia. ♂ ♄ ♃ 2h. 8m. mo.	7	25	5	3	23	4	8	31	11	3	
23	5	St. Clement. Rain; hail,	7	26	5	0	♄	27	5	9	39	11	48
24	6	or Snow.	7	27	5	2	23	6	10	47	12	33	
25	7	D. of GLO. b. 1743. (Apo.	7	28	5	4	15	7	11	54	1	18	
26	A	24th SUN. aft. TRI. D. le.	7	29	5	6	♄	8	morn.	2	3	2	3
27	2	Clo. fl. 11m. 50f. (9h. 2m	7	30	5	3	6	9	0	10	2	50	
28	3		7	31	5	5	Υ	13	10	1	20	3	34
29	4		7	32	5	2	35	11	2	26	4	19	
30	5	St. ANDREW.	7	33	5	5	15	12	3	35	5	3	

of Maria's husband & money  
 H 3  
 Cloudy  
 Snow  
 Rain  
 Cloudy  
 Little  
 Snow

Gracia Dina Konjelt. 26th 1/2 Dollars

H +  
 in O...  
 the 15th  
 and back  
 the 15th  
 in N...  
 equal  
 running  
 w -

## XII. DECEMBER, hath XXXI Days. 1797

Full Moon, Monday the 4th Day at oh. 12m. morning.  
 Last Quarter, Sunday the 10th Day, at 5h. 57m. afternoon  
 New Moon, Monday, the 18th Day, at 2h. 25m. morning  
 First Quarter, Tuesday the 26th Day at 6h. 32m. morning  
 ☉ enters ♍ Thursday 21st Day, at 2h. 39m. morning.

Under  
 Bond  
 from the  
 any day 1797  
 as the ship in 20. to up.

w	w	Remarkable days, Aspects,	r.	☉	♁	♂	♀	♃	♄	♅	H.	w	
D	D	weather, &c. &c.	☉	♁	♂	♀	♃	♄	♅	♁	H.	N.	
1	6	Clo. flow 10m. 22f	7	34	5	8	♁	15	13	4	44	5	4
2	7	<i>Pr. ty moderate for the</i>	7	35	5	21	♁	37	14	5	48	6	3
3	A	ADVENT SUN. <i>season.</i>	7	36	5	5	♁	20	15	6	52	7	1
	2	(D. le. 8h. 48m.)	7	37	5	19	♁	21	10	6	52	8	1
4	2	Sup. ☉ ☽ 3. 15m. ☽ St.	7	37	5	3	♁	38	17	5	37	9	5
5	6	Nicholas. 7 <sup>th</sup> so. 10.40. af.	7	38	5	18	♁	5	18	6	35	9	5
6	5	Clo. flow 7m. 53f.	7	39	5	2	♁	36	19	7	33	10	4
7	5	Conception of V. MARY.	7	39	5	17	♁	7	20	8	30	11	3
8	6	Perigee. ♁ ☽ ☽	7	40	5	1	♁	31	21	9	27	12	3
9	7	2d SUN. in ADVENT. D.	7	40	5	15	♁	46	10	10	24	1	2
10	2	7 <sup>th</sup> s. ri. 2h. af. (le. 8h. 40m.)	7	41	5	29	♁	50	23	11	22	2	1
11	2	Clo. fl. 5m. 36f. <i>I think</i>	7	41	5	13	♁	40	24	11	22	3	4
12	3	LUCY. <i>there is a prospect</i>	7	42	5	27	♁	16	25	0	20	3	5
13	4	<i>of rain about this quarter;</i>	7	42	5	10	♁	39	26	1	18	4	4
14	5	<i>tho' it may happen to be snow.</i>	7	42	5	23	♁	49	27	2	24	5	3
15	6	Clo. fl. 3m. 39f.	7	42	5	6	♁	46	28	3	33	6	2
16	7	3d SUN. in ADV. Day's	7	42	5	19	♁	30	29	4	43	7	2
17	A	(length 8h. 36m.)	7	42	5	2	♁	2	2	8	10	8	1
18	2		7	42	5	14	♁	22	1	5	50	8	5
19	3	Cl. fl. 1h. 39m. Shortest day.	7	42	5	26	♁	33	2	6	51	9	4
20	4	St. THOMAS. 7 <sup>th</sup> s. f. 9. 34. af.	7	42	5	8	♁	34	3	7	57	10	3
21	5	Apogee. ☽ Stationary.	7	42	5	20	♁	29	4	9	0	11	2
22	6	Low Tides. <i>Perhaps snow.</i>	7	42	5	2	♁	21	5	10	6	12	1
23	7	4th SU. in AD. D. le. 8. 36.	7	42	5	14	♁	12	6	11	16	12	5
24	A	CHRISTMAS DAY.	7	42	5	26	♁	8	7	11	16	12	5
25	2		7	42	5	8	♁	12	2	10	2	34	1
26	3	St. STEPHEN. clo. f. 1. 21.	7	42	5	20	♁	30	9	3	24	3	2
27	4	St. JOHN. (7 <sup>th</sup> s. f. 9. 12. 26)	7	41	5	20	♁	30	9	3	24	3	2
28	5	INNOCENTS.	7	41	5	3	♁	6	10	4	39	4	10
29	6	☽ ☽ 1h. 46m. foren.	7	41	5	16	♁	4	11	5	30	4	5
30	7	☽ in per. 1oh. 1m. 24f. for.	7	40	5	29	♁	27	12	6	1	5	4
31	A	SUN. af. CHRIST. Silvester.	7	40	5	13	♁	16	13	6	59	6	3





Qu<sup>d</sup> 26 The Prisoner over  
27 Still fast with an air

Note -

28 J. & B. the water entirely

29 It began to rain -

30 A small rain to the

my house -

31 All fast -

Letters

1/30  
from the

the  
the  
the

26 NE Ship sailed a Brig  
Came within the point  
& stood off agains

TABLE  
Guine  
all Gu  
fore  
hole  
hole  
hole  
hole  
ble  
le. J  
F Jo  
arter  
own S  
lar,  
F Do  
arter  
TA  
1.  
1  
2  
3  
4  
5  
6  
7  
8  
9  
10  
20  
30  
40  
50  
100  
200  
300  
400  
500  
1000

TABLE of the weight and value of Coins as they pass in New-York and New-England.

COINS.	Wt. dw. gr.	N. York.			La. M.			Sterling.		
		L.	s.	d.	L.	s.	d.	L.	s.	d.
Guinea,	5 9	1	17	4	1	8	0	1	10	0
Half Guinea,	2 16	0	18	8	1	14	0	0	10	6
Fourpence,	6 22	2	8	0	1	16	0	1	7	0
Shilling Piece,	17 8	5	16	0	4	8	0	3	6	0
Half Shilling Piece,	8 16	2	18	0	2	4	0	1	13	0
Sixpence,	4 8	1	9	0	1	2	0	0	16	6
Double Johannes,	18 10	6	8	0	4	16	0	3	12	0
Single Johannes,	9 5	3	4	0	2	8	0	1	16	0
Half Johannes,	4 14	1	18	0	1	4	0	0	18	0
Quarter Johannes,	2 7	0	16	0	0	18	0	0	9	0
Half Crown Silver,	19 8	0	8	9	0	6	8	0	5	0
Quarter Crown Silver,	17 12	0	8	0	0	6	0	0	4	6
Half Dollar,	8 18	0	4	0	0	3	0	0	2	3
Quarter Dollars,	4 9	0	2	0	0	1	6	0	1	1 1/2

TABLE of the Value of DOLLARS at 4s. 8d. each.

L.	Sterling.			Halifax.				9pts.	Lawful Mon.				9pts.
	L.	s.	d.	L.	s.	d.	f.		L.	s.	d.	f.	
1	0	4	8	0	5	2	0	8	0	6	2	2	6
2	0	9	4	0	10	4	1	7	0	12	5	1	3
3	0	14	0	0	15	6	2	6	0	18	8	0	0
4	0	18	8	1	0	8	3	5	1	4	10	2	6
5	1	3	4	1	5	11	0	4	1	11	1	1	3
6	1	8	0	1	11	1	1	3	1	17	4	0	0
7	1	12	8	1	16	3	2	2	2	3	6	2	6
8	1	17	4	2	1	5	3	1	2	9	9	1	3
9	2	2	0	2	6	8	0	0	2	16	0	0	0
10	2	6	8	2	11	10	0	8	3	2	2	2	6
20	4	13	4	5	8	8	1	7	6	4	5	1	3
30	7	0	0	7	15	6	2	6	9	6	8	0	0
40	9	6	8	10	7	4	3	5	12	8	10	2	6
50	11	13	4	12	19	3	0	4	15	11	1	1	3
100	23	6	8	25	18	6	0	8	31	2	2	2	0
200	46	13	4	51	17	0	1	7	62	4	5	1	3
300	70	0	0	77	15	6	2	6	93	6	8	0	0
400	93	6	8	103	14	0	3	5	124	8	10	0	6
500	116	13	4	129	12	7	0	6	155	11	1	1	3
600	141	6	8	157	5	2	1	3	186	4	2	2	6

*own  
an Air  
entirely  
to  
Brij  
int*

Of the PLANETS PLACES, for the 1st, 7th, 13th, 19th, 25th

Days.	Month.	☉'s place		♄	♃	♂	♂	♁	♁	♁	♁	Days.
		D.	M.									
												D
1	January.	11	51	15	6	19	10	23	12			1
7		17	58	25	13	23	11	22	12			5
13		24	5	32	21	27	12	22	12			10
19		0	12	15	28	2	13	22	12			15
25		6	18	24	5	6	14	21	12			20
1	February.	13	24	♄	14	11	16	21	12			25
7		19	30	♄	22	15	18	21	11			30
13		25	32	♄	29	19	19	21	11			35
19		1	35	♄	6	24	20	20	11			40
25		7	37	♄	13	28	21	20	11			45
1	March.	11	38	16	10	8	22	21	10			50
7		17	38	20	26	5	23	21	10			55
13		23	37	26	3	9	25	21	10			60
19		29	34	♄	3	11	13	21	10			65
25		5	32	♄	11	18	17	22	9			70
1	April.	12	25	22	27	22	♁	22	9			75
7		18	19	♁	2	♁	4	26	9			80
13		24	11	14	12	♁	3	23	9			85
19		0	8	26	19		4	23	9			90
25		5	53	8	9	27	8	24	9			95
1	May.	11	42	22	8	4	12	7	25	8		100
7		17	30	♁	3	12	16	8	25	8		105
13		23	7	13	19	20	10	26	8			110
19		29	4	21	26	24	11	26	8			115
25		4	49	27	♁	4	28	12	27	8		120
1	June.	11	32	♁	12	3	13	28	8			125
7		17	16	c	19	7	13	29	9			130
13		22	59	♁	28	27	11	14	9			135
19		28	43	24	♁	4	15	15	9			140
25		4	27	22	12	19	16	2	9			145

# AN EPHEMERIS.

1st, 7th, 13th, 19th, and 25th Days of each Month in the Year 1796.

Day.	Month.	☉'s Place.		♄	♃	♂	♆	♅	♁	☾			
		D.	M.							D.	M.		
	July.	10	05	0	22	19	22	17	2	9	44		
		15	53		25	26	26	17	3	10	2		
		21	36	♄	1	♃	4	♂	18	4	10	20	
		27	20		10	11		4	19	4	10	38	
		30	4	♃	21	19		8	19	5	10	56	
	August.	9	46	♂	5	27	12	20	6	11	14		
		15	31		17	♃	5	16	20	6	11	36	
		21	16		29	12	20	20	20	7	11	59	
		27	3	♃	10	19	24	20	20	7	12	21	
		31	15		20	27	28	19	19	8	12	43	
	September.	9	37	♁	1	♃	5	♃	2	19	6		
		15	26		9	12		6	18	9	13	28	
		21	17		17	20	10	18	10	10	13	51	
		27	9		23	27	13	18	10	10	14	13	
		30	2	♁	28	♃	4	17	17	11	14	13	
	October.	8	56		29	11	21	16	11	14	58		
		14	51		27	19	25	15	11	15	18		
		20	47		20	26	29	14	12	15	38		
		26	45		15	♄	3	♁	3	13	15	58	
		31	45	♃	15	10		6	12	12	16	17	
	November.	9	45		21	19	11	12	12	16	36		
		15	46		30	26	15	11	11	16	48		
		21	49	♃	9	♄	3	19	10	11	17	0	
		27	53		19	10	22	10	11	17	12		
		30	57	♄	28	17	26	10	10	17	23		
	December.	10	2	♄	7	24	♃		10	10	17	34	
		16	8		17	♃	1		4	10	10	17	27
		22	14		26		8		8	10	9	17	20
		28	21	♄	6	15	12	10	10	9	17	13	
		31	28	♄	16	21	16	11	11	9	17	6	

PROVINCE OF NOVA-SCOTIA.

His Excellency Sir JOHN WENTWORTH, *Baronet, L.L.*  
Lieutenant-Governor, and Commander-in-Chief, in and of  
his Majesty's Province of Nova-Scotia; &c. &c. &c.

HIS MAJESTY'S COUNCIL.

Hon. Thomas Andrew Strange,	Hon. Charles Morris,
— Richard Bulkeley,	— John Halliburton,
— Henry Newton,	— Henry Duncan,
— Alexander Brymer	— Sampson Salter Blowers,
— Isaac Deschamps,	— James Delancey,
— Thomas Cochran,	— Benning Wentworth.

MEMBERS OF THE HOUSE OF ASSEMBLY.

*County of Halifax.*

*J. M. Fick, Esq;*

Jonathan Sterns, Esq;

Lawrence Hartshorne, Esq;

Michael Wallace, Esq;

*County of Annapolis.*

Thomas Milledge, Esq;

Mr. James Moody.

*County of Cumberland.*

William Freeman, Esq;

Samuel Embree, Esq;

*Queen's County.*

Simeon Perkins, Esq;

Benajah Collins, Esq;

*County of Lunenburg.*

John William Schwartz, Esq;

Edward James, Esq;

*King's County.*

Benjamin Belcher,

Elisha Dewolf, Esq;

*County of Hants.*

Hector M'Lean, Esq;

William Cottnam Tonge, Esq;

*County of Shelburne.*

Stephen Skinner, Esq;

*Town of Halifax.*

William Cochran, Esq;

John George Pyke, Esq;

*Londonderry.*

Robert M'Elminney, Esq;

*Annapolis.*

Thomas Barclay, Esq;

*Granville.*

Alexander Howe, Esq;

*Lunenburg.*

John Bolman, Esq;

*Horton.*

Samuel Leonard, Esq;

*Cornwallis.*

William Baxter, Esq;

*Falmouth.*

Jeremiah Northup, Esq;

*Newport.*

Shubael Dimock, Esq;

*Amherst.*

Thomas Lusby, Esq;

*Windsor.*

John M'Monagle, Esq;

*Liverpool.*

Samuel Hart, Esq;

*C. Morris*

*John M'Graw*

COTIA.

H, Baronet, L.L.

Chief-in and of

Sc.Sc.Sc.

L.

es Morris,  
Halliburton,  
Duncan,  
on Salter Blowers  
Delancey,  
ng Wentworth.

SEMBLY.

of Halifax.

chran, Esq;

Pyke, Esq;

ndonderry.

linney, Esq;

nnapolis.

lay, Esq;

anville.

owe, Esq;

enburgh.

Esq;

orton.

ard, Esq;

wallis.

er, Esq;

outh.

hup, Esq;

ort.

k, Esq;

rst.

Esq;

for.

e, Esq;

ool.

Esq;

County of Sydney.

John Stuart, Esq;

Thomas Cutler, Esq;

Onslow.

Truro.

Matthew Archibald, Esq;

Thomas Barclay, *Speaker.*

James B. Franklin, *Clerk.*

*Secretary and Register of the Province*; James Michael Freke  
Bulkeley, Esq;

*Chief Surveyor of Lands*; Hon. Charles Morris.

*Attorney-General*; Hon. S. S. Blowers.

*Solicitor-General*; Richard John Uniacke, Esq;

*Speaker of the House of Assembly*; Thomas Barclay, Esq;

*Prothonotary and Clerk of the Crown*; William Thompson, Esq;

*Treasurer*; Benning Wentworth, Esq;

*Quartermaster-Officer*; William Cottnam Tonge, Esq;

Yarmouth.

Samuel Sheldon Poole, Esq;

Barrington.

John Sargent, Esq;

Digby.

Henry Rutherford, Esq;

Shelburne.

Colin Campbell, Esq;

PROVINCIAL COURT of ADMIRALTY.

Hon. Richard Bulkeley, *Judge.* | Hon. Charles Morris, *Register.*

J. Uniacke, Esq; *Adv. Gen.* | J. M. F. Bulkeley, Esq; *Marshal.*

His MAJESTY'S SUPREME COURT of the Province.

Honourable Thomas Andrew Strange, Esq; *Chief Justice.*

Honourable Isaac Deschamps and James Brenton, Esq's *Justices.*

JUSTICES of the INFERIOR COURT of COMMON PLEAS.

*County of Halifax.*—Hon. Henry Newton, Jonathan Binney, Francis Green, Michael Wallace, and Daniel Wood. Esqrs.

*County of Annapolis.*—Alexander Howe, Thomas Barclay, David Seabury, Josiah Jones, and Thomas Millidge, Esqrs.

*County of Lunenburg.*—John Creighton, Joseph Pernette, D. C. Jellen, Jonathan Prescott, and J. C. Rudolf, Esqrs.

*King's County.*—John Burbidge, John Chipman, John Whidden, and Gurd. Dennison, Esqrs.

*Queen's County.*—Simeon Perkins, Wm. Johnstone, Samuel Freeman, and Benejah Collins, Esqrs.

*County of Hants.*—G. H. Monk, Joseph Gray, Geo. Deschamps, Hector M'Lean, and William C. Tonge, Esqrs.

4  
*County of Cumberland.*—Edward Barron, Charles Bakes, and Wm. Freeman, Esqrs.

*County of Shelburne.*—Stephen Skinner, Benjamin Davis, Nich. Ogden, John Sargent, and Gideon White, Esqrs.

*District of Yarmouth.*—John Crawley, Nathan Utley, S. Sheldon Poole, Esqrs.

*District of Colchester.*—James Fulton, Robert Archibald, and John Harris, Esqrs.

*Poictou, in the District of Colchester.*—James Fulton, John Fraser, Hugh Denoon, John Ross, Robert Pagan, and John Dawson, Esqrs.

*County of Sydney.*—John Stuart, George Dawkins, Thomas Cutler, and James Stewart, Esqrs.

---

JUSTICES of the PEACE throughout the PROVINCE.  
Honorable S. S. Blowers, | Richard J. Uniacke, Esq.

---

JUSTICES of the PEACE.

66  
*County of Halifax.*—Jonathan Binney, John Newton, George William Sherlock, Francis Green, John George Pyke, Michael Head, William Taylor, Stephen Hall Binney, William Porter, James Michael Freke Bulkeley, Alexander Sutherland, Wm. Sutherland, Theophilus Chamberlain, William Jordan, Mich. Houfeal, James Gautier, William Cochran, Charles Morris, jun. Roger Johnson, Daniel Wood, Lewis Davis, Geo. Brown, William Thompson, John Philipps, Michael Wallace, James Fulton, John Mahan, James Yuill, John Harris, Charles Dickson, Eliakim Tupper, Robert Archibald, John Fraser, Hugh Denoon, John Ross, Andrew Belcher, William Forsyth, James Putnam, John Solomon, Charles Hill, Law. Hartshorne, Rich. Kidston, Philip Marchinton, J. Tremain, John Masters, James Clarke, John Wm. Schwartz, Robert Pagan, John Dawson, James Archibald, James Sutherland, Nicholas Purdue Olding, John George Weaver, Edward Mortimer, Robert Geddes, Alexander Stewart, Samuel Tupper, Hibert Newton Binney, William Logan, John Faulkner, William Cutting, Daniel McCurdy, Daniel Morrison, Jashua Marsh, Alexander Waugh, James Moore, William McKeen, and Thomas Russell, Esquires.

*County of Annapolis.*—Phineas Lovet, Christopher Prince, John Hall, S. Katherns, Benj. James, Thomas Millidge, Daniel Brown, Isaac Bonnel, Samuel Chesley, Richard Hall, Lewis Demolliter, Anthony George Kyth, William M'Niel, Alexander Howe, Josiah Jones, Thomas Bannister, Niel M'Niel, Terence

M'Ke  
Thorr  
Amia  
Shaw,  
Dodd  
County  
Presc  
Jame  
Will  
King's  
John  
Whi  
bert  
Coli  
Ger  
Alli  
County  
Wa  
sley  
and  
Queen  
naj  
Eli  
Ifa  
Coun  
No  
Sr  
B  
J  
C  
M  
C  
Cov



ker, and Wm.  
Dair, Nich.  
y, S. Sheldon  
ald, and John  
John Fraser,  
ohn Dawson,  
Thomas Cut-

ROVINCE.  
ke, Esq.

ton, George  
yke, Michael  
William Porter,  
rland, Wm.  
rdan, Mich.  
arles Morris,  
Geo. Brown,  
lace, James  
Charles Dick-  
rafer, Hugh  
rlyth, James  
orne, Rich.  
sters, James  
an Dawson,  
ue Olding,  
rt Geddes,  
on Binney,  
Daniel Mc'  
er Waugh,  
l, Esquires.  
nce, John  
e, Daniel  
Lewis De-  
Alexander  
, Terence

M'Kerin, Christopher Benson, Andrew Snodgrafs, Edward Thorne, John Hodges, Wm. Winniett, Stephen Jones, David Amiable Dowett, Thomas Cornwall, Walter Willet, Moses Shaw, Robert Fitz Randolph, Phineas Lovett, junr. and Benj. Dodge, Esquires.

*County of Lunenburg.*—Joseph Pernette, D. C. Jessen, Jonathan Prescott, Josiah Marshall, J. C. Rudolf, Casper Woolenhaupt, James Green, F. G. Etter, John Martin, Elisha Cooper, John William Schwartz, J. Donig, and Joseph Rudolf, Esquires.

*King's County.*—John Burbidge, Handy Chipman, John Chipman, John Bishop, jun. Jonathan Crane, Jonathan Shearman, John Whidden, Gurdon Dennison, Daniel Bowen, Edward Potts, Robert Walker, John Fraser, Elisha Dewolf, Benjamin Belcher, Colin Campbell, William Campbell, Thomas Ratchford, B. Gerrish Gray, E. Taylor, James Kerr, John Thomas Hill, John Allison, Elkanah Morton, and John Fillis, Esquires.

*County of Cumberland.*—Edward Baron, William Black, Thomas Watson, George Foster, Charles Baker, Henry Purdy, J. Pug-  
sley, S. Kipp, George Oxley, jun. Thomas Lusby, John Stewart, and Alpheus Morse, Esquires.

*Queen's County.*—Simcon Perkins, C. R. William Johnstone, Benajah Collins, William Freeman, Samuel Hunt, John Thomas, Elisha Hopkins, Hallit Collins, Joseph Bass, Nathan Tupper, Isaac Dexter, Bartlet Bradford, and Joshua Newton, Esquires.

*County of Hants.*—Joseph Gray, George Deschamps, Jeremiah Northup, Constant Church, John Sandford, John Emerson, John Small, Duncan Campbell, Hector M'Lean, Keneth M'Donald, Benjamin Dewolf, Richard Cunningham, John M'Monagle, John Bond, Wm. Cottnam Tonge, Daniel M'Niel, John Clarke, Peter Shey, Otho Schwartz, Jonathan Snelling, John M'Colla, Arnold Shaw, Shubal Dimock, John Walker, John Chambers, William Smith and Isaac O'Brien, Esquires.

*County of Shelburne.*—Stephen Skinner, John Crawley, R. M'Kinnon, ~~Ebenezer Cook~~, Archibald Smith, Joseph Durfee, Nichr-  
Ogden, ~~David Thompson~~, David Thompson, Joshua Frost, John Homer, John Coffin, John Sargeant, ~~Ebenezer Parker~~,  
~~Alexander Leslie~~, Samuel S. Poole, Benjamin Barnard, Gideon White, ~~Samuel Poole~~, Samuel Campbell, ~~George Smith~~, Edward Brinley, Benoni, Dentremond, Nathaniel Richards, Samuel Marshall, and James Kelly, Esquires.

*County of Sydney.*—Timothy Hierlihy, George Dawkins, Joseph Marshall, Daniel M'Niel, Lifford Waldron, T. W. Hierlihy, George Whitmore, John Stuart, Tho. Cutler, James Stewart, and John Legget, Esquires.

27

28

Commissioners for taking Special Bail in the Country, on  
Actions depending in the Supreme Court.

<i>Annapolis</i> : Wm. Winniett, Esq;	<i>Shelburne</i> : C. Campbell, Esq;
<i>Cornwallis</i> : J. Burbidge, Esq;	<i>Digby</i> : Richard Hill, Esq;
<i>Horton</i> : Samuel Dennison, Esq;	<i>Cumberland</i> : Cha. Baker, Esq;
<i>Windfor</i> : G. Delchamps, Esq;	<i>Lunenburg</i> : Fra. Rudolf, Esq;

JUDGES of the COURT for the PROBATE of WILLS.

Hon. Charles Morris, *Surrogate-General*.

<i>Annapolis</i> : Wm. Winniett, Esq;	<i>Yarmouth</i> : S. S. Poole, Esq;
<i>Cumberland</i> : Ed. Barron, Esq;	<i>Shelburne</i> : C. Campbell, Esq;
<i>Lunenburg</i> : J. Creighton, Esq;	<i>Sydney</i> : John Stuart, Esq;
<i>Hants</i> : Hon. Isaac Deschamps, Esq;	<i>King's County</i> : H. Chipman, Esq;
	<i>Queen's County</i> : S. Perkins, Esq;

OFFICERS of His MAJESTY'S CUSTOMS.

Hon. Henry Newton, <i>Collector</i> .	Mr. John H. Flieger, <i>Guager</i> .
John Slayter, Esq; <i>Comptroller</i> .	Isaac Maffingham, } <i>Tide</i>
J. Newton, Esq; <i>Surveyor and</i>	Hammond Green, } <i>Waiters.</i>
<i>Searcher</i> .	

OFFICERS for Collecting the PROVINCIAL DUTIES.

John Newton and Hibbert H. Binney, Esquires. *Collectors*.  
 Daniel Wood, Esq; *Inspector and Searcher*.  
 Mr. John Cleaveland, *Collector of Licence Duty*.  
 Mr. John H. Flieger, *Guager*.  
 Messrs. John Selby and Charles Hill, *Revenue Waiters*.  
 Mr. Henry Newton, junr. *Affstant*.  
*Collectors of Light Duty*. { *Digby*—Niel M'Neil, Esq;  
 { *Annapolis*—James Hughston,  
 { *Shelburne*—Edward Brinley, Esq;

PORT of SHELBURNE

James Bruce, Esq; <i>Collector</i> .	Archibald Scott Bruce, Esq;
David Thompson, Esq; <i>Comptroller</i> .	<i>Surveyor and Searcher</i> .
	Mr. Richard Brazel, <i>Guager</i> .

SURVEYOR-GENERAL of WOODS in the PROVINCE of  
NOVA-SCOTIA, and all other His Majesty's Territories  
in NORTH-AMERICA.

His Excellency Sir JOHN WENTWORTH, Baronet.

Sittings of the Courts and Sessions in this Province.

SUPREME COURT.

- At HALIFAX.—The first Tuesday of April, second Tuesday of July, and second Tuesday of October.
- At WINDSOR.—On the third Thursday of May and September.
- At HORTON.—In King's County on the Monday next following the sitting of said Court at Windsor.
- At ANNAPOLIS.—On Monday next following the sitting of the said Court at Horton.
- At AMHERST.—On the Tuesday following the sitting of said Court at Annapolis, in the Spring of the Year.

INFERIOR COURT OF COMMON PLEAS.

- At HALIFAX.—On the second Tuesday of March, second Tuesday of September, and second Tuesday of December.
- At ANNAPOLIS.—On the first Tuesday of April, and the first Tuesday of November.
- At LUNENBURG.—On the second Tuesday of April, and the second Tuesday of October.
- At HORTON.—On the first Tuesday of June, and the first Tuesday of October.
- At LIVERPOOL.—On the second Tuesday of April, and the second Tuesday of November.
- At TUSKET VILLAGE.—On the first Tuesday of April, and the first Tuesday of October.
- At AMHERST.—On the third Tuesday of March and the last Tuesday of October.
- At SHELBURNE.—On the first Tuesday of March, first Tuesday of July, and first Tuesday of November.
- At COLCHESTER.—At Orflow, on the first Tuesday of July, at Walmfley in the District of Poictou, on the third Tuesday of July, at Orflow, on the first Tuesday of January, and at Walmfley aforesaid on the third Tuesday of January.
- At WINDSOR.—On the first Tuesday of April, and the last Tuesday of October.
- At MANCHESTER.—On the second Tuesday of May, and the second Tuesday of October.

SESSIONS OF THE PEACE.

- At HALIFAX.—On the first Tuesday of March, the first Tuesday of June, the first Tuesday of September and the first Tuesday of December.
- At ANNAPOLIS.—On the first Tuesday of December.

The Court of Quarter Sessions

Country, on Court.

Campbell, Esq;  
d Hill, Esq;  
na. Baker, Esq;  
a. Rudolf, Esq;

E of WILLS.

Poole, Esq;  
Campbell, Esq;  
tuart, Esq;  
Chipman, Esq;  
s. Perkins, Esq;

TOMS.

eger. Guager.  
Tide  
Waiters.

L DUTIES.

Collectors.

ers.

Esq;  
ghston,  
inley, Esq;

Bruce, Esq;  
rcher.  
el, Guager.

OVINCE OF  
Territories

net.



List of the **PROVINCIAL GRAND LODGE** of the Most Ancient and Honorable Fraternity of **FREE AND ACCEPTED MASONS** in the Province of **NOVA-SCOTIA** and Masonical Jurisdiction thereunto belonging viz.

The Hon. Richard Bulkeley, *Right Worshipful Grand Master.*  
 The R. W. Duncan Clark, Esq; *Deputy Grand Master.*  
 The R. W. James Clarke, Esq; *Sen. Grand Warden.*  
 The R. W. John Bremner, Esq; *Jun. Grand Warden.*  
 The R. W. John Selby, *Genl. Grand Secretary.*  
 The W. J. Wm. Schwartz, Esq; *Grand Treasurer.*  
 The Reverend John Wetheral, *Grand Chaplain.*  
 Mr. Michael Bennett, *Deputy Grand Secretary.*  
 Mr. Andrew Gray, *Grand Pursuivant.*  
 Mr. Wm. Wilt, *Grand Tyler.*

**LODGE's** under the Jurisdiction of the **GRAND LODGE** of **NOVA-SCOTIA.**—viz.

No. 155. Called *St. Andrews*, on the Registry of England, held at Halifax, First Tuesday.

No. 211. Called *St. John's*, on the Registry of England, held at Halifax, First Monday.

No. 8. Called the *Royal Rose*, on the Registry of Lower Canada, a Travelling Warrant, in H. M. 7th Regiment of Foot (or Royal Fusiliers) now quartered in Halifax, First Thursday.

No. 7. Called, the *Lodge of Fidelity*, on the Registry of Lower Canada, a Travelling Warrant, in H. M. 7th Regiment of Foot (or Royal Fusiliers) now Quartered in Halifax Fourth Tuesday.

On the Registry of Nova-Scotia.

No. 1. Resigned.

No. 2. Called *Artillery*, held at Halifax; Fourth Monday.

No. 3. Called *Parr*, held at Shelburne, Second Thursday.

No. 4. Resigned.

No. 5. Recalled.

No. 6. Called *Digby*, held at Digby, First Tuesday.

No. 7. Called *Temple*, held at Manchester, First Tuesday.

No. 8. Resigned.

No. 9. Called *Chester*, held at Chester, First Tuesday.

No. 10. Called *Hiram*, held at Shelburne, Second Monday.

No. 11. Called *St. George's*, held at Cornwallis, First Monday.

No. 12. Recalled.

No. 13. Called *Windfor Lodge* held at Windfor.

No. 14. Recalled.

No. 15. Called Cornwallis, held at Halifax, Third Monday.

No. 16. \_\_\_\_\_ held at Sydney Cape-Breton, First  
wednesday.

No. 17. Recalled.

No. 18. Called Royal Navy Lodge, held at Halifax, Second  
Tuesday.

No. 19. Called St. George's held at Manguville, New-Brun-  
swick, Second Tuesday.

No. 20. Resigned.

No. 21. Called Sion, held at Kingston, N. B. First Monday after  
full Moon.

No. 22. Called Solomon's, held at Fredericton, N. B. First  
Tuesday after Full Moon.

No. 23. Called Hiram York, held at Fredericton, N. B.  
Second Thursday.

No. 24. Called Royal Nova-Scotia Regiment, a Travelling  
Warrant) in the Royal Nova-Scotia Regiment, second Thursday.

CLERGY of the ESTABLISHED CHURCH in the  
PROVINCE of NOVA-SCOTIA.

**R**IGHT Reverend *Charles Inglis*, D. D. Bishop of Nova-  
Scotia.

Reverend *Robert Stanfer*, L.L.B. Rector of St. Paul's Church,  
Halifax,

Reverend *Bernard M. Houfeal*, Missionary to the Germans, Halifax.

Reverend *George Wright*, Master of the Academy in Halifax.

Reverend *Joshua Wingate Weeks*, Minister at Preston.

Reverend *Edward Chapman Willoughby*, Missionary at Windsor.

Reverend *William Cochran*, President of the Academy at Windsor.

Reverend *William Twining*, Missionary at Cornwallis and Horton.

Reverend *John Wiswall*, Missionary at Wilmot and Aylesford.

Reverend *Archibald P. Inglis*, Missionary at Granville.

Reverend *Jacob Bailey*, Missionary at Annapolis.

Reverend *Roger Viets*, Missionary at Digby.

Reverend *Thomas B. Rowland*, Missionary at Shelburne.

Reverend *Richard Money*, Missionary at Lunenburg.

Reverend *Thomas Shreve*, Missionary at Parrsborough.

Reverend *John Millidge*, Missionary at Cumberland.

List of Presbyterian Ministers in the Province of Nova Scotia.

*Halifax*.—Arch. Gray,

*Cornwallis*.—Hugh Graham,

*Truro*.—Daniel Cock,

*Poictou*.—James M'Gregor.

*Lunenburg*.—B. R. Comingo,

*Yarmouth*.—\_\_\_\_\_ Scott.

FIRE

Benjamin

William

Ephraim

Samuel

John He

Stephen

Edward

John Ir

Philip F

1st Janu

18th di

Birth

17th M

23d A

4th Ju

Honor

Com

Mr. I

A.

Cor

Titus

an

Mr.

Ja

S

Eli

a

Mr.

t

The

t

Mr

H

M

FIRE ENGINE COMPANY for the TOWN of HALIFAX.

Benjamin Bridge, *Captain.*  
 William Milward  
 Ephraim Whiston  
 Samuel King  
 John Head  
 Stephen Dupee  
 Edward G. Wisdom  
 John Irven  
 Philip Fofs

William Hogg  
 Michael Perkins  
 Thomas Adams  
 Edmund Butler  
 Archibald Wilfon  
 John Brown  
 Thomas Donaldson  
 Alexander Clunies  
 Robert Milne.

LEVEE DAYS AT THE GOVERNMENT-HOUSE.

1st January New Year's Day.  
 18th ditto. Queen Charlotte's  
 Birth Day.  
 17th March, St. Patrick.  
 23d April, St. George.  
 4th June, King's Birth Day.

12th August, Prince of Wales  
 Birth Day.  
 22d Sept. George III crowned.  
 25th October, George III Ac-  
 cession.  
 30th November, St. Andrew.

OFFICERS OF HIS MAJESTY'S NAVAL-YARD.

Honorable Henry Duacan, Esq;  
*Commissioner.*  
 Mr. Provo. F. Wallis, and Mr.  
 A. Farquarson, *Clerks to the*  
*Commissioner.*  
 Titus Livie, Esq; *Naval-Officer*  
*and Storekeeper.*  
 Mr. A. Anderson, and Mr. B.  
 James, *Clerks to the Naval*  
*Storekeeper.*  
 Elias Matthal, Esq; *Master-Ship-*  
*wright.*  
 Mr. Thomas Wood, *Clerk to*  
*the Master Shipwright.*  
 Thomas Read, Esq; *Master-At-*  
*tendant.*  
 Mr. William Hughes, *Foreman*

*of Shipwrights.*  
 Mr. William Lec, *Foreman of*  
*House Carpenters.*  
 Mr. John Brush, *Foreman of*  
*Smiths.*  
 Mr. John Gardner, *Foreman of*  
*Sailmakers.*  
 Mr. John King, *Foreman of*  
*Masons.*  
 Mr. James Robertson, *Foreman*  
*of Labourers.*  
 Mr. James Rackum, *Boatswain*  
*of the Ordinary.*  
 Mr. G. Andrew, *Purveyor of*  
*Masts.*  
 Mr. Duncan Clarke, *Surgeon.*  
 Mr. Stephen Cullen, *Porter.*

HIS MAJESTY'S NAVAL-HOSPITAL.

Honourabe John Halliburton, *Surgeon and Agent.*  
 Mr. M'Evoy, *Affstant.*

Sheriffs in the several Counties in this Province.

County of HALIFAX.  
 Foster Hutchinson, Esq.  
 County of ANNAPOLIS.  
 Robert Dickson, Esq.  
 County of CUMBERLAND.  
 Henry Purdy, Esq.  
 County of Lunenburg.  
 Benjamin Knaut, Esq.

KING'S COUNTY.  
 John Thomas Hill, Esq.  
 QUEEN'S COUNTY.  
 Nathan Tupper, Esq.  
 County of HANTS.  
 Benjamin Dewolf, Esq.  
 County of SHELBURNE.  
 Ebenezer Parker

STAFF OF THE ARMY.

Under the Command Lieutenant-General His Royal Highness Prince EDWARD.

Major General JAMES OGILVIE.

*Deputy Adjutant General*, Frederick Aug. Wetherall,  
*Major of Brigade*, Robert Walker,  
*Aid-du-Camps to His Royal Highness*, John Vesey, and G. S. Smith.

*Military Secretary*, John Hall.  
*Commanding Royal Engineer*, James Straten,  
*Commissary and Storekeeper General*, George Brinley, Esq;  
*Assstant Commissary General Provision Branch*, Gregory Towniend, Esq;  
*Assstant Commissary Gen. Fuel Branch*, Foster Hutchinson, Esq; junr.  
*Commissary of Musters*, William Porter, Esq;  
*Deputy Barrack Master General* James Putnam, Esq.

*Ordnance Storekeeper*, Clement Horton, Esq;  
*Barrack Master*, Stephen H. Binney, Esq;  
*Ordnance Barrack Master*, C. Horton, Esq.  
*Clerk of the Cheque*, J. Spry Heaton, Esq.  
*Deputy Paymaster to the Forces*, Hon. Alexander Brymer.  
*Comptroller of Army Accounts*, ~~Michael Peck~~ ~~Dunkley~~, Esq;  
*Deputy Judge Advocate*, Edw. B. Breton, Esq.  
*Surgeons to the Garrison*, ~~Don~~ ~~Monte~~ Thomas Irwin.  
*Assstants do.* James Boggs, Jno. Ogden, and John Boyd.  
*Surgeon to the Ordnance and Artillery*, W. J. Almon.  
*Acting Chaplain to the Garrison*, Rev. J. Wetherall.

OFFICERS of the REGIMENTS

Under Lieutenant-General His Royal Highness Prince EDWARD.

ROYAL ARTILLERY.

*Major.*  
 Thomas Desbrisay  
*Capt. Lieutenant.*  
 Robert Wright

*Lieutenants.*  
 Geo. W. Roekruge  
 George Mercer

*2d Lieutenant.*  
 Harcourt Holcombe  
*Surgeon.*  
 Wm. J. Allmon

SEVENTH  
 Co  
 His Royal  
 Prince E  
 Lieut.  
 John Des  
 A. L. La  
 M  
 James Bu  
 Charles  
 Ca  
 Walter  
 Thomas  
 Thomas  
 Robert  
 Henry  
 George  
 J. A. P  
 Edward  
 John B  
 Capt.  
 Fred. H  
 Supern  
 James  
 Sir Jo  
 Ba  
 Li  
 Franc  
 Sam  
 Geo  
 Jam  
 Joh  
 Jon  
 He  
 Al  
 Ge  
 C  
 A



SEVENTH REGIMENT OF FOOT, (OR ROYAL FUSILIERS.)

*Colonel.*  
 His Royal Highness  
 Prince EDWARD.  
*Lieut. Colonels.*  
 John Despard  
 A. L. Layard  
*Majors.*  
 James Burrowes  
 Charles Domville  
*Captains.*  
 Walter Cliffe  
 Thomas L'Esrange  
 Thomas Saumarez  
 Robert Walker  
 Henry J. Reynett  
 George J. Smith  
 J. A. Prevost  
 Edward J. Byng  
 John Birmingham  
*Capt. Lieutenant.*  
 Fred. Hardyman  
*Supernum. Captains.*  
 James M'Donald

*James Peachy*  
*Lieutenants.*  
~~James Peachy~~  
~~James Peachy~~  
~~James Peachy~~  
 Robert Burton  
 Brenton Haliburton  
 William Bernard  
 B. N. Layard  
~~James Peachy~~  
 George Harris  
 Ralph Gore  
 William Despard  
 Robert Robertson  
 M. G. Howe  
 John Holland  
 Winckworth Tonge  
 John Weeks  
~~James Peachy~~  
 John Parsonage  
 F. Holland  
 Tho. Fitzsimons  
 Donald Campbell

Michael S. Scott  
 Cha. Sehekelton  
 F. A. Weheral  
 Skinner 20  
 Hon. B. Cockran  
 Joseph Taylor  
 Cha. Nowel  
 Bowyer  
 Henry Crotty  
 Hulton Rowe  
 Alex. Walker  
 Robert D. Stuart  
 Christopher Taylor  
 Finlay  
*Chaplain.*  
 John Wetheral  
*Adjutant.*  
 Fred. Hardyman  
*Quarter Master.*  
 Surgeon.  
~~James Peachy~~  
*Captain*

ROYAL NOVA-SCOTIA REGIMENT.

*Colonel.*  
 Sir John Wentworth  
 Baronet.  
*Lieut. Colonels.*  
 Francis Kearney  
 Samuel V. Bayard  
*Major.*  
 George H. Monk  
*Captains.*  
 James Moody  
 John Solomon  
 Jones Fawson  
 Hector M'Lean  
 Alexander Howe  
 George Thesiger  
*Capt. Lieutenant.*  
 Alex. Sutherland

*Lieutenants.*  
 Job Bennett Clarke  
 Thomas Morris  
 Delancey Barclay  
 William Cox  
 Joshua W. Weeks  
 John Allen  
 Benjamin James  
 John G. de Greben  
~~Alex. M. G. G. G.~~  
 Obo Schwartz  
 Philip Kearney  
 Eric Sutherland  
 Geo. H. Monk  
 Michael Purnett  
 Charles Rudelf  
 Robert Campbell

John C. Ritchie  
*Ensigns.*  
 John Fitzsimons  
 Timothy Ruggles  
 John Emerson  
 Frederick Muller  
 Joshua N. Upham  
 Richard W. Green  
*Chaplain.*  
 Robert Stanfer  
*Adjutant.*  
 William Cox  
*Quarter Master.*  
 John Allen  
*Surgeon.*  
 John Fraser  
*Mate.* Jon. Clarke.

## OFFICERS OF MILITIA.

His Excellency Sir JOHN WENTWORTH, Bart. Capt. General.  
 Honourable RICHARD BULKELEY, Brigadier General.  
 THOMAS BARCLAY, Esq. Adjutant-General.  
 WILLIAM B. BRINLEY, Esq; Commissary.

### HALIFAX ARTILLERY COMPANY.

<p><i>Captain.</i>                  Jona. Tremain  <i>Capt. Lieutenant.</i></p>	<p>Andrew Liddell  <i>1st Lieutenants.</i>                  John Bremier</p>	<p>William Smith  <i>2d Lieutenant.</i>                  Thomas Moody</p>
---	--	---

### OFFICERS of the 1st BATTALION of HALIFAX MILITIA.

<p><i>Colonel.</i>                  Sir J. Wentworth, Bt.  <i>Lieut. Colonel.</i>                  John George Pyke  <i>Major.</i>                  William Lawlor  <i>Captains.</i>                  James Strachan, L. I.                  John Boyd                  Jacob Hurd C.                  William Millét                  Winckworth Allan                  Charles Geddes                  James Creighton                  Nicholas Smith</p>	<p><i>Capt. Lieutenant.</i>                  Thomas Fillis  <i>1st Lieutenants.</i>                  William Lyon L. I.                  Godfrey Jacob                  Martin Wagner                  Jona. Tremain, jun.                  George Grassie                  Adolphus Vieth                  Thomas Wood C                  Robert Hill                  Joseph Davis                  John Stealing  <i>2d Lieutenants.</i>                  Thomas Boggs</p>	<p>Thomas Wallace                  Norman Uniacke                  John Holmes, C.                  Garret Miller                  James Leaver                  John Liddell                  John W. Pyke L. I.  <i>Adjutant.</i>                  Adolphus Vieth  <i>Quarter Master.</i>                  Thomas Austin  <i>Surgeon.</i>                  Michael Head  <i>Mate.</i>                  John Head</p>
--	---	--

### COLCHESTER REGIMENT OF MILITIA.

<p><i>Colonel.</i>                  Robert Archibald  <i>Lieut. Colonel.</i>                  Jotham Blanchard  <i>Major.</i>                  John Archibald  <i>Captains.</i>                  James Fulton                  John M'Keen                  John Culling</p>	<p>Samuel Fulton                  Robert Geddes  <i>Lieutenants.</i>                  Samuel Whidden                  Daniel Eaton                  Robert M'Elhinney                  John Archibald                  Robert Gammill                  John Archibald  <i>2d Lieutenants.</i></p>	<p>Thomas Fletcher                  Hugh Logan                  James Benvie                  Robert Johnson                  Richard Blackmore  <i>Ensigns.</i>                  William Logan                  Samuel M'Lellan                  Daniel M'Curdy                  John Higgins</p>
--	---	--

2.11.3

1.7.6

3.3.9

1.11.3

SECOND REGIMENT of KING'S COUNTY MILITIA.

*Lieut. Colonel.*  
Jonathran Crane  
*Major.*

*Captains.*  
Wm. Bishop  
Francis Perkins  
Patrick Henry  
*Capt. Lieutenant.*  
David Dennison

*Lieutenants.*  
Simon Fitz  
Samuel Bishop  
Wm. Allison  
Sam. Dennison, jun.  
*2d Lieutenants.*  
Amasa Harris  
Samuel Hamilton  
John Bishop  
Sherman Dennison

Daniel Dewolf  
Benj. Lee  
*Adjutants.*  
Nathaniel Caulkins  
*Quarter Master.*  
Sherman Dennison  
*Surgeon.*  
Joseph Prescott  
*Chaplain.*  
Wm. Twining

PART of the foregoing REGIMENT at PARRSBOROUGH.

*Captains.*  
James Ratchford  
Patrick Henry

*2d Lieutenants.*  
Francis T. Prichard  
James Jenks

Elisha Fowler  
*Adjutant.*  
Fones York

OFFICERS of the 2d BATTALION of HALIFAX MILITIA.

*Colonel.*  
J. M. F. Bulkeley  
*Lieut. Colonel.*  
W. Cochran  
*Majors.*  
Richard J. Uniacke  
Wm. Sutherland  
*Captains.*  
Andrew Belcher  
John W. Schwartz  
James Sutherland  
Charles Morris  
Constant Connor  
George M'Intosh  
James Cochran  
Daniel Wood  
Samuel Mercer  
John Lawton  
A. Hinthelwood  
John G. Weaver  
— M'Innes  
William M'Keen

Rufus Fairbanks  
Tobias Miller  
*Brevet Capt. Lieut.*  
W. Smith  
*1st Lieutenants.*  
William Jordan  
George Smith  
James Foreman  
Tho. Cochran, jun.  
Alex. Creighton  
J. F. Gschwind  
Benjamin Green  
George Bayer  
William Lawton  
Patrick O'Brien  
Hugh Bambrick  
John Weaver  
— Coombs  
James Croutscher  
George Campbell  
John Lawlor  
Peter M'Nab, jnn.

Andrew Wallis  
Thomas M'Gory  
*2d Lieutenants.*  
Thomas Watson  
Benjamin Etter  
Stephen Collins  
James Fitzgerald  
James Wooden  
Alex. M'Donald  
John Story  
George Dunn  
— Studders  
James Kidston  
R. M'Donald  
John Albro  
Peter M'Condorchie  
Henry Newton  
Patrick Ryan  
Mich. Richardson  
*Adjutant & Surgeon*  
J. F. Gschwind  
*Quarter Master.*  
Michael Bennet

*Lieut. Colonel.*

*Major.*

Colin S. Campbell  
*Captains.*  
William C. Tonge  
John Emerson  
Rich. Cunningham  
John Shey  
Peleg Sandforth  
Constant Church  
Niel M'Geachy  
Jonathan Snelling  
Jehu Mosher  
David Whidden  
William Smith  
Niel M'Geachy

HANTS MILITIA.

*Capt. Lieutenant.*

Nathan Thomas  
*1st Lieutenants.*  
John Palmer  
John Irish  
Johnua M. Francklin  
Robert M'Heffey  
Loran Dewolf  
John Brown  
John Macomber  
William Shey  
Shubael Dimock  
Isaac O'Brien  
William Salter  
William Northup  
*2d Lieutenant.*  
W. Halliburton

Isaac Deschamps  
Job Rofs  
Job Card  
Thomas Allen  
Nicholas M'isher  
Simeon Irish  
Thomas Smith  
John Smith  
Francis Denfmore  
Samuel Meek  
M. B. Grant  
Ludowick Hunter  
Paul Woodworth  
*Adjutant.*  
Job Rofs  
*Quarter Master.*  
Loran Dewolf

OFFICERS of the ANNAPOLIS REGIMENT of MILITIA.

*Colonel.*

Thomas Millidge

*Lieut. Colonels.*

David Seabury

*Major.*

Chr. Benson

*Captains.*

Samuel Chesley  
Ds Dismans  
Tunis Bogart  
William Robertson  
James Eager  
Nathaniel Parker  
John S. ocomb

Sam. Morse

Jacob Troop

*Lieutenants.*

Henry Harris  
James Thorne  
John Roach  
Miner Tupper  
Jacob Troop  
Andrew Walter  
William Prince  
John Van Buskirk  
Zebulon Dutland  
John Starrot  
James Hall

*Ensigns.*

John Dismans  
Ferdinand Shaffner  
Pardon Saunders  
John Bath  
Stephen Dodges  
B. R. Beardsley  
Edw. Dunn  
Isa. Shaw  
*Adjutant.*  
William Prince  
*Quarter Master.*  
Foster Woodberry

DIGBY REGIMENT of MILITIA.

*Lieut. Colonels.*

Isaac Hatfield

*Major.*

Isaac Roop

*Captains.*

John Hill  
John Stewart  
Jo. Grigg

*Lieutenants.*

Jesse Keen  
William Baily  
John Coseman  
*2d Lieutenants.*  
Amos Dillon  
Isaac Titus

*Ensigns.*

Benjamin Lawrence  
John Aikins  
T. Jackson  
*Adjutant.*  
William Muir  
*Quarter Master.*  
John Morford

C  
Thomas  
*Lieut.*  
Alexand  
C  
Robert  
William  
Thomas  
Reuben  
  
Thoma  
*Lieu*  
John T  
  
Peter  
  
Reub  
  
*Lieu*  
C  
Robe  
  
Edw  
  
John  
Hug  
Nich  
Tho  
Dav  
  
Colo  
Joh  
*Lieu*  
Jof  
  
D.  
  
Jo  
Jo  
W  
D

NOVA-SCOTIA LEGION.

*Colonel.*  
 Thomas Barelay  
*Lieut. Colonel.*  
 Alexander Howe  
*Captains.*  
 Robert Rollo  
 William Willet  
 Thomas Williams  
 Reuben Harkinson

*Lieutenants.*  
 Robert Robinson  
 Phineas Millidge  
 William Winniett  
 Joseph Dowfett  
*2d Lieutenants.*  
 William Seaman  
 George Nash  
 John Groben

Charles Dowfett  
*Ensigns.*  
 Peter De St. Croix  
 William Bonnell  
 John Fitz Randolph  
*Adjutant.*  
 Christopher Benson  
*Quarter Master.*  
 Francis Hutchinso

ACADIAN MILITIA—COUNTY OF ANNAPOLIS.

*Colonel.*  
 Thomas Millidge  
*Lieut. Colonel.*  
 John Taylor  
*Major.*  
 Peter Dowfett  
*Captains.*  
 Reuben Hankinson

Charles E. Razeo  
 Amant Lanoo  
*Lieutenants.*  
 Joseph Dowfett  
 John M'Colly  
 William Johnson  
 Charles Dowfett  
 John Moody

John Trahon  
*Ensigns.*  
 John Fitz Randolph  
 Jacob Cornwall  
*Adjutant.*  
 John Moody  
*Quarter Master.*  
 William Johnston

PICTOU REGIMENT OF MILITIA.

*Lieutenant Colonel.*  
 Commandant.  
 Robert Pagan  
*Major.*  
 Edward Mortimer  
*Captains.*  
 John Dawson  
 Hugh Denoon  
 Nicholas P. Olding  
 Thomas Copland  
 David M'Lean

Rob. Stewart, sen.  
*1st Lieutenants.*  
 Wm. M'Kay  
 Thomas Pagan  
 James Carmichael  
 David Patterfon  
 John Patterfon, jun.  
 James M'Donald  
 James Peacock  
 David Simpson  
*2d Lieutenants.*

David Lowden  
 David Bryden  
 Robert Stewart, jun.  
 William Frazer  
 Thomas Patterfon  
 Hugh Frazer  
 James M'Donald  
 Robert Smith  
 Donald M'Kay  
*Adjutant.*  
 John Gault

OFFICERS of the LUNENBURG MILITIA.

*Colonel Commandant.*  
 John Creighton  
*Lieut. Commandant.*  
 Joseph Pernette  
*Major.*  
 D. C. Jessen  
*Captains.*  
 Jonathan Prescott  
 John Donig  
 Wendel West

Cornwallis Moreau  
 John Christ. Rudolf  
 C. Wollenhaupt  
 Francis Rudolf  
 Thomas Pirtle  
*Capt. Lieutenant.*  
 Romkes B. Comingo  
*Lieutenants.*  
 Henry Vogeler  
 George Koch

John Arenberg  
 John Prescott  
 L. M. Wilkins  
 Benjamin Knaut  
 John Pernette  
*Ensigns.*  
 Nicolas Reinhard  
 William Marvin  
 Peter Arenberg  
*Adjutant.* F. Rudolf

*W. Thomas Soule*

**FIRE-WARDS for the TOWN of HALIFAX.**

John George Pyke,	}	Esquires.
Richard John Uniacke,		
Michael Wallace,		
Charles Hill,		
Richard Kidston,		
Mr. John Cleaveland,		
James Cochran, Esquire.		
William Lawlor, Esquire.		<i>William Lawlor</i>
Mr. William Millet,		
Elia Marshall, Esquire.		
Mr. George Bell.		
James Clarke, Esquire.		
Mr. Thomas Fillis.		
Mr. John Stealing.		
Mr. Andrew Liddle.		

**A List of the Post Towns in Nova-Scotia, New-Brunswick and Canada, with the rates of Postage for a single Letter to and from Halifax, in Sterling Money.**

	£.	s.	d.
Windsor	0	0	4
Horton or Parrsborough	0	0	6
Annapolis, Cumberland, Digby, or St. John	0	0	8
Fredericton	0	0	10
Quebec	0	1	6
Three rivers or Berthier	0	1	8
Montreal, Coteau du Lac, or Cornwall	0	1	10
Matilda or Augusta	0	2	0
Kingston	0	2	2
Niagara, or Fort Erie	0	2	4
Detroit	0	2	10
Michilimackinac	0	3	4

**NOTE.**—The foregoing rates being for a single letter, it is to be observed, that a double letter must pay double the sum mentioned in this table; a treble letter, three times the sum, and an ounce weight, four times the sum; and so in proportion, accounting every ounce weight equal to four single letters.

☞ The mails for the afore-mentioned places, are closed at the Post-Office at Halifax, on every Monday at 3 o'clock in the evening.—Letters that are intended for those mails, must be put into the office by 7 o'clock.

OFFI

Franc  
Char  
Char  
Thom  
Alex  
Jame  
Mur  
Josef  
Alex  
M. C  
A. C  
W. I  
Joh

Rob  
Edw  
Geo  
Step  
Dav  
Ste  
Joh  
Th  
A.  
Jo

ALIFAX.

OFFICERS of His MAJESTY'S SHIPS on this STATION.

RESOLUTION,  
74 guns.

Francis Pender, Esq; Captain.  
Charles Apthorp, 1st Lieut.  
Charles Wollaston, 2d Lieut.  
Thomas H. Tidy, 3d Lieut.  
Alexander Skene, 4th Lieut.  
James Stewart, 5th Lieut.  
Murdo Downie, Master.  
Joseph Fleming, Surgeon.  
Alexander Urquhart, Purser.  
M. C. Cole, Captain. }  
A. Collins, 1st Lieut. } Marines  
W. Harvey, 2d Lieut. }  
John Wetherall, Chaplain.

Henry Anderson, Major. } Ma-  
Wm. Wilson, 1st Lieut. } rines.

T H E T I S,  
38 guns.

Hon. Alex. F. Cochrane, Capt.  
George Tobin, 1st Lieut.  
Lord Cochran, 2d Lieutenant.  
Robert O'Brien, 3d Lieut.  
Andrew Mackie, Master.  
James Sawyers, Surgeon.  
Thoma: Phelps, Purser.  
Paul Crebbin, 1st Lieut. Marines

A S I A,  
64 guns.

Robert Murray, Esq; Captain.  
Edward Hanham, 1st Lieut.  
George Lawrence, 2d Lieut.  
Stephen Digby, 3d Lieutenant.  
David Smith, Master.  
Stern Tuckey, Surgeon.  
Joseph Trounfall, Purser.  
Tho. Gilford, Capt. }  
A. Cox, 1st Lieut. } Marines  
John Cook fley, Chaplain.

LA PREVOYANTE,  
44 guns.

Charles Wemyss, Esq; Captain.  
J. G. Saville, 1st Lieutenant.  
Wm. McLeod, 2d Lieutenant.  
Wm. Askew, 3d Lieut.  
Lemuel Little, Master.  
Edward Beaumont, Surgeon.  
John Cock, Purser.  
Wm. Sladin, Lieut. Marines.

ASSISTANCE,  
50 guns.

Henry Mowat, Esq; Captain.  
John Mackellar, 1st Lieutenant.  
Geo. Gust. Lenock, 2d Lieut.  
Wm. Webb, 3d Lieutenant.  
Rob Dunham, 4th Lieut.  
Wm. Scargill, Master.  
Robert Cinnamon, Surgeon.  
Samplon Coyfgarne, Purser.

T O P A Z E,  
38 guns.

Steph. Geo. Church, Esq; Capt.  
Jacob Waldon, 1st Lieut.  
George Hegginson, 2d Lieut.  
Courtney, 3d Lieut.  
William Oty, Master.  
Liefeld, Surgeon.  
Joseph Bellamy, Purser.  
McDonald, Lieut. Marines

Brunswick and  
letter to and from

£.	s.	d
0	0	4
0	0	6
0	0	8
0	0	10
0	1	6
0	1	8
0	1	10
0	2	0
0	2	2
0	2	4
0	2	10
0	3	4

ter, it is to be  
sum mention-  
sum, and an  
proportion, ac-  
letters.

are closed at  
'clock in the  
must be put

**THISBE,**

28 guns.

Jno. Oakes Hardy, Esq; Capt.  
 James Wareham, 1st Lieut.  
 Wm. Jos. Symons, 2d Lieut.  
 John Coleman, Master.  
 Wm. Cather, Surgeon.  
 Edw. Lamport, Purser.  
 — Montgomery, Lt. Marines.

**LA RAISON,**

28 guns.

John P. Beresford, Esq; Capt.  
 John Lambe, 1st Lieutenant.  
 John C. Wilday, 2d Lieutenant.  
 John Shields, Master.  
 Ralph Cumings, Surgeon.  
 Alex. Smith, Purser.  
 J. Atcherly, Lieut. Marines.

**L Y N X,**

18 guns.

Robert Hall, Esq; Captain.  
 Thomas J. Lynne, 1st Lieut.  
 Edward O'Brien, 2d Lieut.  
 Joseph Dillon, Master.  
 William Jamason, Surgeon.  
 John Jewell, Purser.  
 Wm. Phillips, Lieut. Marines.

**L'ESPERANCE,**

18 guns.

John ... Esq; Captain.  
 Edward ... Lieut.  
 John ... Lieutenant.

George Hewson, ...

**SPENCER,**

18 guns.

Andrew F. Evans, Esq; Captain.  
 Joseph Lenox, 1st Lieutenant.  
 Alex. M'Culloch, 2d Lieut.  
 — Baker, Master.  
 Robert Hume, Surgeon.  
 John Pearse, Purser.

**BERMUDA,**

16 guns.

John Rennie, Esq; Captain.  
 Abraham Ravot, 1st Lieut.  
 Charles Moray, Acting Lieut.  
 William Forrest, Master.  
 John Callum, Surgeon.  
 Wm. Brenton, Purser.

**HUNTER.**

Tuder Tucker, Captain.

**ROVER.**

Tho. Maxtone, Captain.

**DRIVER.**

Thomas Hurd, Captain.

**DASHER.**

John Sealer, Captain.

**Prison Ship SECURITY.**

Lieutenant James Milne, Com-  
 mander.

Agent for Prisoners of War.—  
 Daniel Lyman, Esq.

Mr. James Proud, Clerk.



**N C E R,**  
guns.

ns, Esq; Captain.  
1st Lieutenant.  
och, 2d Lieut.  
, Master.  
, Surgeon.  
Purser.

**MUDA,**  
guns.  
Esq; Captain.  
ot, 1st Lieut.  
y, Acting Lieut.  
ft, Master.  
Surgeon.  
Purser.

**N T E R.**

Captain.

**V E R.**

Captain.

**V E R.**

Captain.

**H E R.**

ptain.

**SECURITY.**

s Milne, Com-

rs of War.—  
Eq.

, Clerk.

**Distance from Halifax to Poictou, on the New-Road, via Maf-  
quedoboit, viz.**

MILES.		MILES.	
From Halifax, across the		From Mr. Alex. Henry's	1½
Ferry, to Dartmouth	1½	Mr. Rob. Dunbar's (first	
To Preston, Bradley's	6	Settlement) on the west	
Mr. Putnam's Farm	5	branch of the east river	
Mr. Porter's ditto	5	of Poictou	26½
Mr. William M'Keen's	11	Mr. Wm. M'Kay's	8
Mr. Leckie's	13	Mr. John Fraser's	7
Mr. Robert Archibald's	4	Across the harbour to <i>Walm-</i>	
Mr. Robert Geddes's	4	<i>sley Court-House</i>	1
	<hr/> 49½		<hr/> 44—93½

**Distance between Halifax and Annapolis Royal, with the Houses  
of Entertainment on the Road.**

	MILES.
From Halifax to Fort Sackville	10
To Wenman's Farm	5
To Springfield	3
To Eglington	3
To Pence's Farm	4½
To Woodworth's	5
To Montague house	6
To Margaret Place	2
To Windsor	6½
To the Ferry House, Falmouth	2
To half way River	5
To Bishop's Farm	7
To Fowler's	3
To Peck's	6½
To Inglis's Farm	4½
To Marshal's Farm, Stedman's	5
To Aylesford Township Boundary	6
To Bowen's Farm, Buskirk's	6
To Clermont, (the Bishop of Nova-Scotia's Seat)	1
To Dodge's Farm	7½
To Leonard's Farm	10½
To Hick's Ferry	6
To Annapolis Ferry.	15
	<hr/> 133

11111111  
11111111  
19  
18 Schoony

**ROAD FROM HALIFAX TO FORT-CUMBERLAND.**

From Halifax to Windsor	45 Miles
To Partridge Island (Parrsboro') by water	39
Lewis's, at Half Way River, Parrsboro'	9
Moore do.	1
Jeffers, Head of the River Hebere	10
Munroe, Barronsfield	12
Davidson, Amherst	7
Baxter, do. Court-House	1
Fort Cumberland	6

*William Spry Secretary*

**Another Road from PARRSBORO', by the RIVER MACAN.**

Moore at Half Way River	85 Miles
Robert Read, Macan Settlement	12
Coats do.	7
Davidson, Amherst	8
Fort Cumberland	7
	119

By the latter Road you clear the Ferry and Sands at Barronsfield, which are often troublesome to Sailors, but when the Tides are low, the former is the best Way, the Ferry excepted.

**AN ACCOUNT OF BHOYS**

Laid down for the better Guidance of Ships, sailing in and out of Halifax Harbour.

<i>Where placed.</i>	<i>Depth of Water.</i>	<i>Colour of the Buoys.</i>
Litchfield Rock	15 Feet	white
Mars Rock (between Chedabucto and the Litchfield Rock)	21	Ditto
Point Pleasant Shoal, the South East part	22	Ditto
Shoal between Cornwallis and George's Island	30	Red

