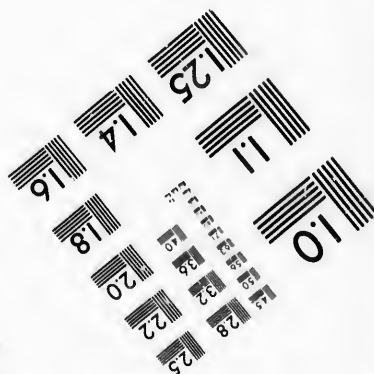
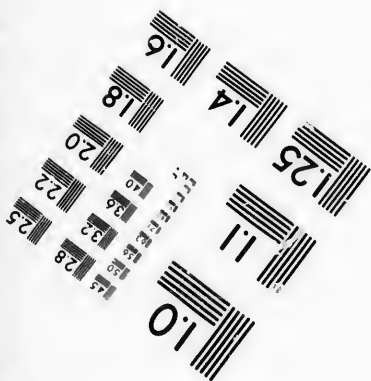
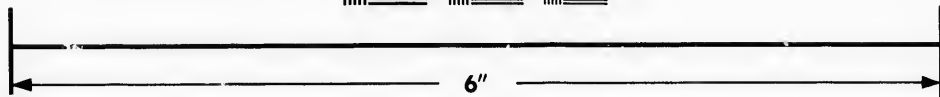
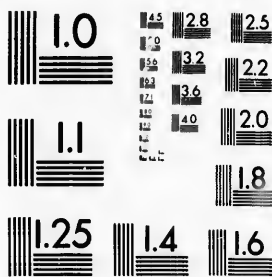


**IMAGE EVALUATION
TEST TARGET (MT-3)**



**Photographic
Sciences
Corporation**

23 WEST MAIN STREET
WEBSTER, N.Y. 14580
(716) 372-4503

**CIHM/ICMH
Microfiche
Series.**

**CIHM/ICMH
Collection de
microfiches.**



Canadian Institute for Historical Microreproductions / Institut canadien de microreproductions historiques

© 1987

Technical and Bibliographic Notes/Notes techniques et bibliographiques

The Institute has attempted to obtain the best original copy available for filming. Features of this copy which may be bibliographically unique, which may alter any of the images in the reproduction, or which may significantly change the usual method of filming, are checked below.

L'Institut a microfilmé le meilleur exemplaire qu'il lui a été possible de se procurer. Les détails de cet exemplaire qui sont peut-être uniques du point de vue bibliographique, qui peuvent modifier une image reproduite, ou qui peuvent exiger une modification dans la méthode normale de filmage sont indiqués ci-dessous.

- | | |
|------------------------------------------------------------------------------------------------------------------------------------------------------------------------------------------------------------------------------------------------------------------------------------------------------------------------------------------------|--------------------------------------------------------------------------------------------------------------------------------------------------------------------------------------------------------------------------------------------------------------------------------------------------------------------------------------------|
| <input type="checkbox"/> Coloured covers/
Couverture de couleur | <input type="checkbox"/> Coloured pages/
Pages de couleur |
| <input type="checkbox"/> Covers damaged/
Couverture endommagée | <input type="checkbox"/> Pages damaged/
Pages endommagées |
| <input type="checkbox"/> Covers restored and/or laminated/
Couverture restaurée et/ou pelliculée | <input type="checkbox"/> Pages restored and/or laminated/
Pages restaurées et/ou pelliculées |
| <input type="checkbox"/> Cover title missing/
Le titre de couverture manque | <input checked="" type="checkbox"/> Pages discoloured, stained or foxed/
Pages décolorées, tachetées ou piquées |
| <input type="checkbox"/> Coloured maps/
Cartes géographiques en couleur | <input type="checkbox"/> Pages detached/
Pages détachées |
| <input type="checkbox"/> Coloured ink (i.e. other than blue or black)/
Encre de couleur (i.e. autre que bleue ou noire) | <input checked="" type="checkbox"/> Showthrough/
Transparence |
| <input type="checkbox"/> Coloured plates and/or illustrations/
Planches et/ou illustrations en couleur | <input type="checkbox"/> Quality of print varies/
Qualité inégale de l'impression |
| <input checked="" type="checkbox"/> Bound with other material/
Relié avec d'autres documents | <input type="checkbox"/> Includes supplementary material/
Comprend du matériel supplémentaire |
| <input type="checkbox"/> Tight binding may cause shadows or distortion
along interior margin/
La reliure serrée peut causer de l'ombre ou de la
distorsion le long de la marge intérieure | <input type="checkbox"/> Only edition available/
Seule édition disponible |
| <input type="checkbox"/> Blank leaves added during restoration may
appear within the text. Whenever possible, these
have been omitted from filming/
Il se peut que certaines pages blanches ajoutées
lors d'une restauration apparaissent dans le texte,
mais, lorsque cela était possible, ces pages n'ont
pas été filmées. | <input type="checkbox"/> Pages wholly or partially obscured by errata
slips, tissues, etc., have been refilmed to
ensure the best possible image/
Les pages totalement ou partiellement
obscurcies par un feuillet d'errata, une pelure,
etc., ont été filmées à nouveau de façon à
obtenir la meilleure image possible. |
| <input checked="" type="checkbox"/> Additional comments:/
Commentaires supplémentaires: | Docket title page is bound in as last page in book but filmed as first page on fiche. |

This item is filmed at the reduction ratio checked below/
Ce document est filmé au taux de réduction indiqué ci-dessous.

10X	12X	14X	16X	18X	20X	22X	24X	26X	28X	30X	32X
									/		

The copy filmed here has been reproduced thanks to the generosity of:

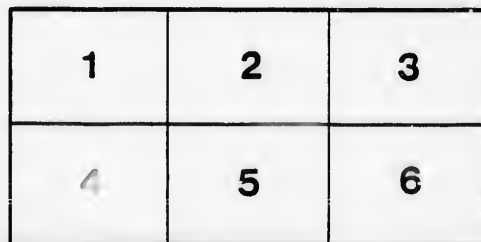
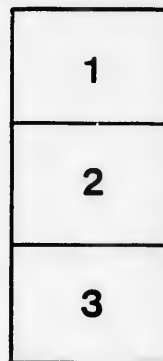
Seminary of Quebec
Library

The images appearing here are the best quality possible considering the condition and legibility of the original copy and in keeping with the filming contract specifications.

Original copies in printed paper covers are filmed beginning with the front cover and ending on the last page with a printed or illustrated impression, or the back cover when appropriate. All other original copies are filmed beginning on the first page with a printed or illustrated impression, and ending on the last page with a printed or illustrated impression.

The last recorded frame on each microfiche shall contain the symbol \rightarrow (meaning "CONTINUED"), or the symbol ∇ (meaning "END"), whichever applies.

Maps, plates, charts, etc., may be filmed at different reduction ratios. Those too large to be entirely included in one exposure are filmed beginning in the upper left hand corner, left to right and top to bottom, as many frames as required. The following diagrams illustrate the method:



L'exemplaire filmé fut reproduit grâce à la générosité de:

Séminaire de Québec
Bibliothèque

Les images suivantes ont été reproduites avec le plus grand soin, compte tenu de la condition et de la netteté de l'exemplaire filmé, et en conformité avec les conditions du contrat de filmage.

Les exemplaires originaux dont la couverture en papier est imprimée sont filmés en commençant par le premier plat et en terminant soit par la dernière page qui comporte une empreinte d'impression ou d'illustration, soit par le second plat, selon le cas. Tous les autres exemplaires originaux sont filmés en commençant par la première page qui comporte une empreinte d'impression ou d'illustration et en terminant par la dernière page qui comporte une telle empreinte.

Un des symboles suivants apparaîtra sur la dernière image de chaque microfiche, selon le cas: le symbole \rightarrow signifie "A SUIVRE", la symbole ∇ signifie "FIN".

Les cartes, planches, tableaux, etc., peuvent être filmés à des taux de réduction différents. Lorsque le document est trop grand pour être reproduit en un seul cliché, il est filmé à partir de l'angle supérieur gauche, de gauche à droite, et de haut en bas, en prenant le nombre d'images nécessaire. Les diagrammes suivants illustrent la méthode.

PROVINCE OF }
NEW-BRUNSWICK }

In Appeal.

FARQUHAR MCHAE,
(*Defendant in the Court below*)
AND
APPELLANT;
ROBERT MASON,
(*Plaintiff in the Court below*)
RESPONDENT.

=====
Respondent's Case.
=====

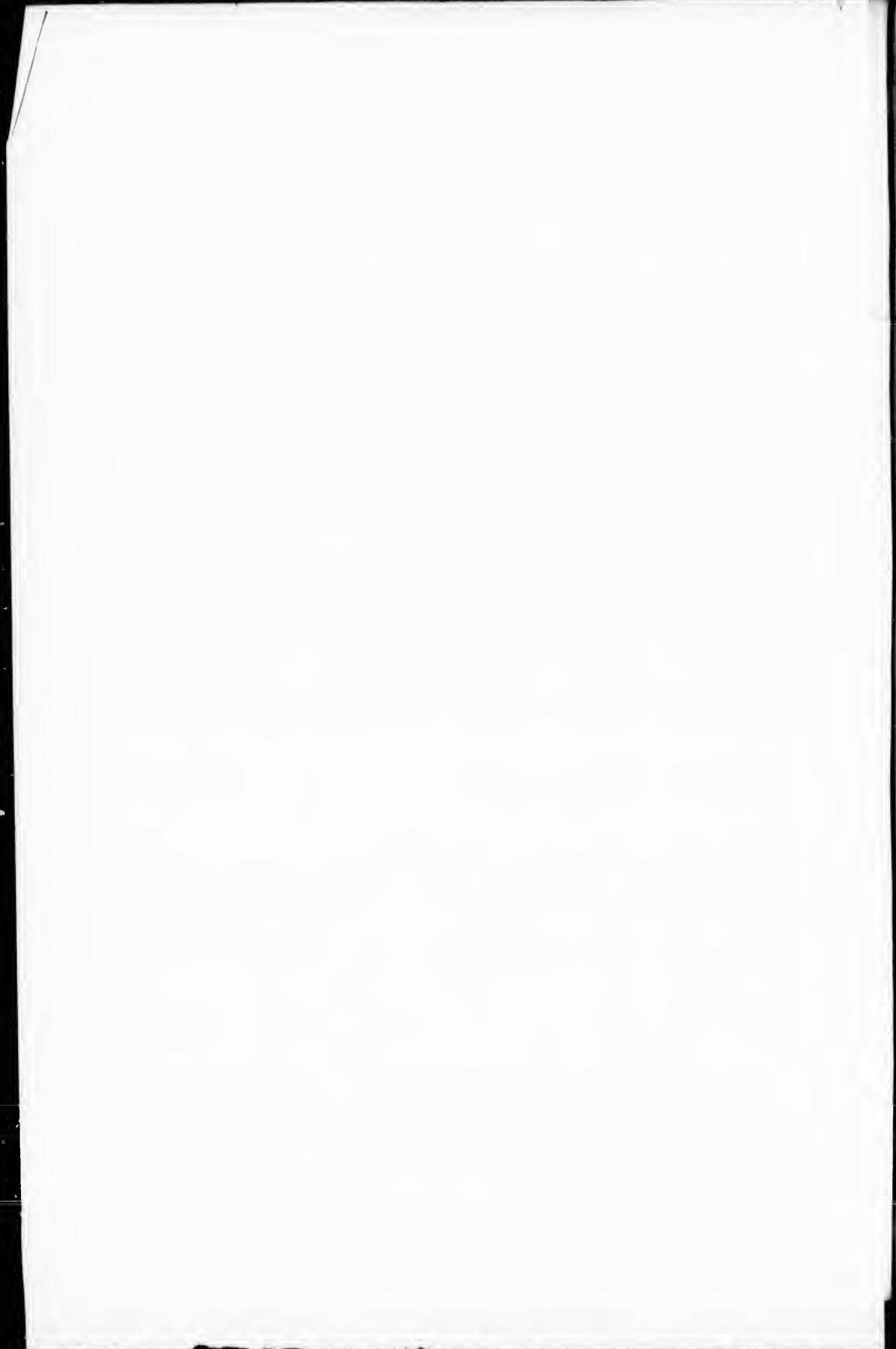
Filed 14. Nov. 1822
W. M.
W. M. and P. M.

A. STUART, for Respondent.

PROVINCE of }
LOWER-CANADA }

In Appeal.

FARQUHAR MERRAE,



PROVINCE OF }
LOWER-CANADA. }

In Appeal.

FARQUIAR McRAE,
(Defendant in the Court below,)
APPELLANT;

AND

ROBERT MASON,
(Plaintiff in the Court below,)
RESPONDENT.

RESPONDENT'S CASE.

ON the 10th of January, 1820, at Montreal, Farquhar McRae, the above named Appellant, and one Robert Kerr, they being then Carpenters and Joiners, and Copartners, working and trading together, at Montreal, under the name or firm of Kerr & McRae, made there a certain Note, whereby, three months after date, they jointly and severally promised to pay the Respondent the sum of £50, for value received, and severally signed the same.

On the 22d of February, 1820, Robert Kerr absconded.

On the 23d the Respondent made affidavit that these, his debtors, were about to leave the Province, and that, without the benefit of a Capias ad Respondendum, he might be deprived of his remedy against them. The Capias accordingly issued. The Sheriff returned service of the process on McRae, and *non est inventus* as to Kerr.

The Respondent's declaration contains an averment similar to the affirmation contained in his affidavit.

Upon the trial of the cause, the Copartnership which had subsisted between Kerr & McRae, was proved by several witnesses. The absconding of Kerr, one of the partners, was also proved by several witnesses. The intention of McRae to follow the example of his partner is also proved by testimony in the cause. And the Court below, coupling these facts with the positive affirmation of the Respondent, did not hesitate in pronouncing judgment against the Appellant for the sum demanded.

The only question, offering any difficulty, was the term of payment, which had not expired at the period of the institution of the suit. But it was found, on reference to authorities, (and amongst others Ferr. Gr. Cout.) that the debtor, meditating flight, was deprived of the benefit of any term of which the creditor might have granted him.

It is from this judgment that the present appeal is brought.

Quebec, 14th Nov. 1820.

A. M. Mason
aw

Faint, illegible text centered on the page, possibly bleed-through from the reverse side. The text appears to be organized into several lines or paragraphs, but the characters are too light and blurry to transcribe accurately.

