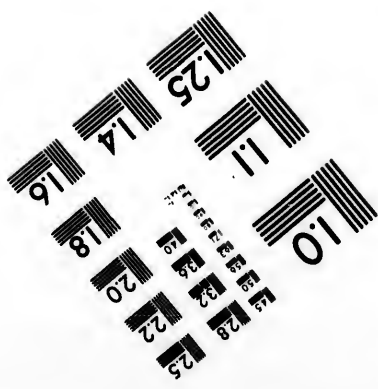
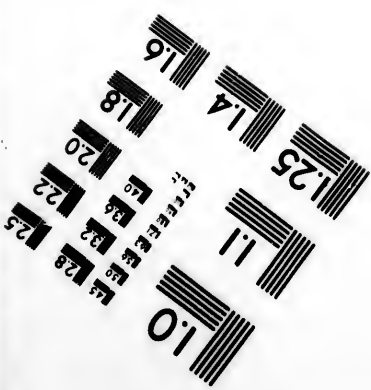
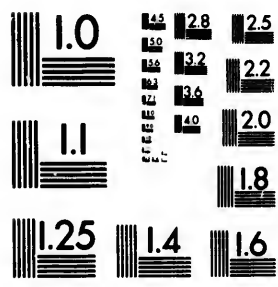


**IMAGE EVALUATION
TEST TARGET (MT-3)**



**CIHM/ICMH
Microfiche
Series.**

**CIHM/ICMH
Collection de
microfiches.**



Canadian Institute for Historical Microreproductions

Institut canadien de microreproductions historiques

1980

Technical Notes / Notes techniques

The Institute has attempted to obtain the best original copy available for filming. Physical features of this copy which may alter any of the images in the reproduction are checked below.

L'Institut a microfilmé le meilleur exemplaire qu'il lui a été possible de se procurer. Certains défauts susceptibles de nuire à la qualité de la reproduction sont notés ci-dessous.

- Coloured covers/
Couvertures de couleur
- Coloured maps/
Cartes géographiques en couleur
- Pages discoloured, stained or foxed/
Pages décolorées, tachetées ou piquées
- Tight binding (may cause shadows or distortion along interior margin)/
Reliure serrée (peut causer de l'ombre ou de la distortion le long de la marge intérieure)
- Additional comments/
Commentaires supplémentaires

- Coloured pages/
Pages de couleur
- Coloured plates/
Planches en couleur
- Show through/
Transparence
- Pages damaged/
Pages endommagées

Bibliographic Notes / Notes bibliographiques

- Only edition available/
Seule édition disponible
- Bound with other material/
Relié avec d'autres documents
- Cover title missing/
Le titre de couverture manque
 Plates missing/
Des planches manquent- Additional comments/
Commentaires supplémentaires
- Pagination incorrect/
Erreurs de pagination
- Pages missing/
Des pages manquent
- Maps missing/
Des cartes géographiques manquent

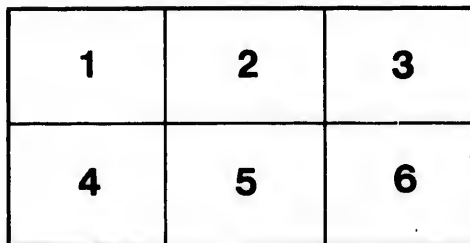
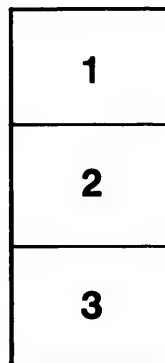
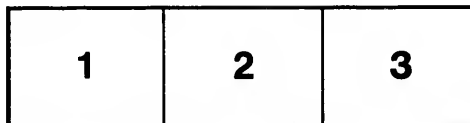
The images appearing here are the best quality possible considering the condition and legibility of the original copy and in keeping with the filming contract specifications.

The last recorded frame on each microfiche shall contain the symbol → (meaning "CONTINUED"), or the symbol ∇ (meaning "END"), whichever applies.

The original copy was borrowed from, and filmed with, the kind consent of the following institution:

Library of the Public
Archives of Canada

Maps or plates too large to be entirely included in one exposure are filmed beginning in the upper left hand corner, left to right and top to bottom, as many frames as required. The following diagrams illustrate the method:



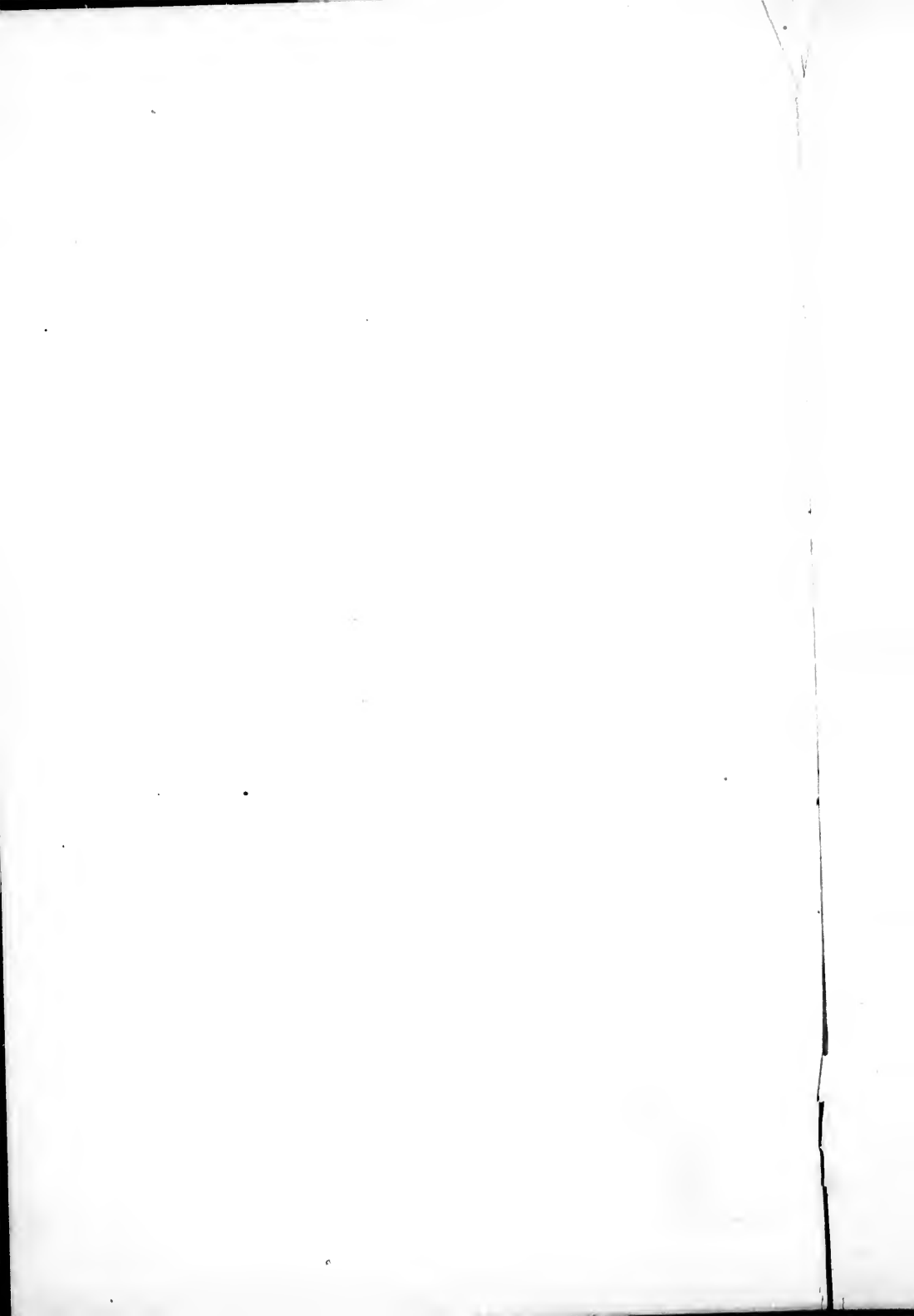
Les images suivantes ont été reproduites avec le plus grand soin, compte tenu de la condition et de la netteté de l'exemplaire filmé, et en conformité avec les conditions du contrat de filmage.

Un des symboles suivants apparaîtra sur la dernière image de chaque microfiche, selon le cas: le symbole → signifie "A SUIVRE", le symbole ∇ signifie "FIN".

L'exemplaire filmé fut reproduit grâce à la générosité de l'établissement prêteur suivant :

La bibliothèque des Archives
publiques du Canada

Les cartes ou les planches trop grandes pour être reproduites en un seul cliché sont filmées à partir de l'angle supérieure gauche, de gauche à droite et de haut en bas, en prenant le nombre d'images nécessaire. Le diagramme suivant illustre la méthode :



CEREMONY

— OF —

Laying Corner Stone of Montreal Temple,

OCTOBER 6th, 1894.

1. Grand Lodge is opened in the Windsor Hall.
2. Grand Master addresses Grand Lodge, stating object of meeting.
3. Procession is formed, headed by Band.
4. When the procession reaches site, both ranks face inwards, allowing G. M. and Officers to walk to their respective stations; Hardy's Band next take their position on the floor of the building, followed by Brethren and friends,—the Band playing "The British Grenadiers."
5. The President of the Montreal Temple Co'y presents an address to the Grand Master.
6. Grand Master replies and addresses those assembled.
7. Sing at once. 11's.

1 Come, rouse ye, my brethren, to labour away;
The Sun's in the east, and betokens the day;
The plumb, square and level, now bring into view,
For hearts that are willing, there's plenty to do.

2 The "Pillar of Wisdom" with gavel in hand,
Stands ready to lead, to preside and command:
The "Pillar of Beauty" behold in the light
To watch for the Sun at meridian height.

3 When day is far spent, and our labour is done
The "Pillar of Strength" sees the setting of Sun,
Our duties accomplished, the day at its close,
We hail the glad season of rest and repose.

8. Grand Chaplain now offers up prayer.

9. Sing at once. C. M.

1 Behold the "Stone," the precious "Stone,"
The builders did refuse;
A stone, rejected, cast away
Unworthy to be used.

2 Amid the Temple's rubbish now
That "Stone" rejected lies;
But from that rubbish it shall yet
Triumphantly arise.

3 The hidden name shall be revealed,
Its virtue brought to view;
Mark well the mystic circle there,
And read the name anew.

4 This precious stone, although it has
Rejected been by some,
Shall be restored, and shall at last
Head Corner Stone become.

10. The Architect presents plans and working tools to the G. Master.
11. Grand Treasurer places box in cavity, contents are read by the Secretary of The Montreal Temple Co'y.
12. The Grand Master spreads cement, etc., and the stone is lowered with three distinct stops, at the end of each stop begin the following verses, one after each stop.

L.M.

- 1 When God upheaved the pillowed earth,
Hung out the stars, to light gave birth,
Opened its deeps, its carpet spread,
Was silence all, as chaos fled
- 2 When rose the fane on Zion's hill,
A work of matchless power and skill,
No axe was heard, no hammer there,
But all was still as summer air.
- 3 Great God ! thus let the temple rise
Whose altar stone within us lies
Silent and calm with skill divine
Till light immortal round it shine.

13. Grand Master proceeds with the assistance of his officers to lay the stone.
Right Worshipful Deputy Grand Master, what is the proper jewel of your office ?

D. G. M.—The Square.

G. M.—What are its moral and masonic uses ?

D. G. M.—To square our actions by the square of *Virtue*, and prove our work.

G. M.—Apply the implement of your office to that portion of foundation stone that needs to be proved, and make report.

(The Deputy Grand Master applies the square to the stone, and says :)

D. G. M.—Most Worshipful, I find the stone to be square. The craftsmen have performed their duty.

G. M.—Right Worshipful Senior Grand Warden, what is the jewel of your office ?

S. G. W.—The Level.

G. M.—What are its moral and masonic uses ?

S. G. W.—Morally, it reminds us of "*Equality*," and its use is to lay horizontals.

G. M.—Apply the implement of your office to the foundation stone, and make report.

(This is done.)

S. G. W.—Most Worshipful, I find the stone to be level. The craftsmen have performed their duty.

G. M.—Right Worshipful Junior Grand Warden, what is the proper jewel of your office ?

J. G. W.—The Plumb.

G. M.—What are its moral and masonic uses ?

J. G. W.—Morally, it teaches *rectitude* of conduct, and we use it to try perpendiculars.

G. M.—Apply the implement of your office to the several edges of the foundation stone, and make report.

(This is done.)

J. G. W.—Most Worshipful, I find the stone is plumb. The craftsmen have performed their duty.

G. M.—This corner stone has been tested by the proper implements of masonry. I find that the craftsmen have skilfully and faithfully performed their duty, and I declare the stone to be well formed, true and trusty, and correctly laid according to the rules of our ancient craft. Let the elements of consecration now be presented.

(The deputy grand master comes forward with the vessel of corn, and scatters it on the stone, saying :)

D. G. M.—I scatter this corn as an emblem of plenty. May the blessings of bounteous Heaven be showered upon us, and upon this and all like noble undertakings, and may T. G. A. O. T. U. inspire the hearts of this people with virtue, wisdom and gratitude.

Response.—So mote it be.

When Corn is applied, sing at once.

- 1 Where once of old, in Israel
Our early brethren wrought with toil,
Jehovah's blessings on them fell,
In showers of Corn, and Wine, and Oil.

(The senior grand warden then comes forward with the vessel of wine, and pours it upon the stone, saying :)

S. G. W.—I pour this wine as an emblem of joy and gladness. May the Great Ruler of the universe bless this country and all who are in lawful authority over us, and grant that religion, freedom, progress and prosperity may perpetually prevail, and that the voice of joy and thanksgiving may be heard everywhere throughout the land.

Response.—So mote it be.

When Wine is applied, sing at once.

- 2 When there a shrine to Him above
They built, with worship sin to foil,
On threshold and on corner-stone
They poured out Corn, and Wine, and Oil.

(The junior grand warden then comes forward with a vessel of oil, which he pours upon the stone, saying :)

J. G. W.—I pour this oil as an emblem of peace and consolation. May the Great Disposer of events cause peace to prevail more and more upon earth, and good will among men,—give comfort and consolation to the sorrowing and bereaved ; provide and protect the widow, the fatherless and the suffering poor ; and bestow upon us all the consolation of His grace in the trials and vicissitudes of life.

Response.—So mote it be.

When Oil is applied, sing at once.

- 3 And we have come, fraternal bands,
With joy and pride and prosperous spoil,
To Honor Him by votive hands,
With streams of Corn, and Wine, and Oil.

Invocation by Grand Master.

Response.— So mote it be.

(The Grand Master strikes the stone three times with the gavel, and the public grand honors are then given.)

Sing at once.

- 1 Great Architect of heaven and earth,
To whom all nature owes its birth,
Then spoke and vast creation stood,
Surveyed the work, pronounced it good.
 - 2 Lord, canst thou deign to own and bless
This humble dome, this sacred place,
Oh ! let thy spirit presence shine
Within these walls, this house of thine.
 - 3 'Twas reared in honor of thy name ;
Here kindle Lord the sacred flame ;
Oh ! make it burn in every heart
And never from this place depart.
 - 4 Lord, here the wants of all supply,
And fit our souls to dwell on high ;
From service in this humble place.
Raise us to praise thee face to face.
15. *G. S.*—I now declare this Corner Stone duly laid, according to our ancient customs, by Most Wor. Bro. J. P. Noyes, Q.C., Grand Master of Masons in the Province of Quebec, assisted by other Grand Lodge Officers and Members of the Grand Lodge of Ancient, Free and Accepted Masons of Quebec, on the 6th day of October, A.L. 5894—A.D. 1894.
16. The Grand Master then delivers over to the Architect the implements of architecture.
- (The Grand Master ascends the platform while the band plays "Rule Britannia.")
17. Band will play "Rule Britannia."
18. Trowel is then presented to Grand Master.
19. Grand Master then addresses his Officers, the Brethren, and those assembled:
20. 1 Brothers, ere to-day we part,
Join each voice and every heart ;
Grateful songs to God we'll raise,
Hymning forth our songs of praise.
 - 2 Brothers we may meet no more
Yet there is a happier shore
Where, re'eased from toil and pain,
Brothers we shall meet again.
21. Grand Chaplain pronounces benediction.

GOD SAVE THE QUEEN.

