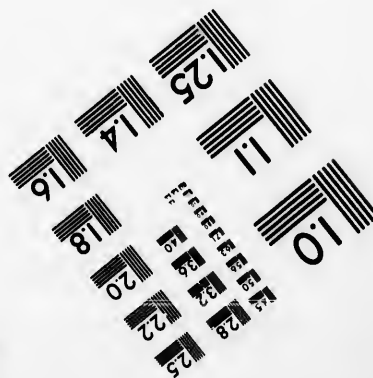
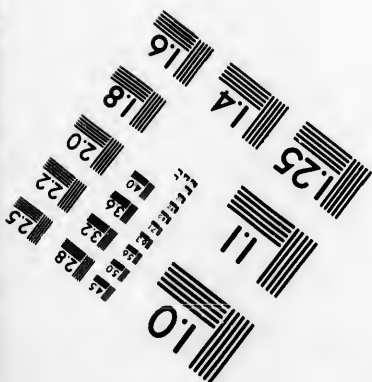
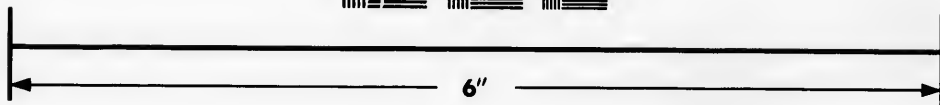
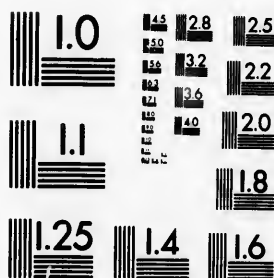


**IMAGE EVALUATION
TEST TARGET (MT-3)**



**Photographic
Sciences
Corporation**

23 WEST MAIN STREET
WEBSTER, N.Y. 14580
(716) 872-4503

**CIHM
Microfiche
Series
(Monographs)**

**ICMH
Collection de
microfiches
(monographies)**



Canadian Institute for Historical Microreproductions / Institut canadien de microreproductions historiques

© 1993

Technical and Bibliographic Notes / Notes techniques et bibliographiques

The Institute has attempted to obtain the best original copy available for filming. Features of this copy which may be bibliographically unique, which may alter any of the images in the reproduction, or which may significantly change the usual method of filming, are checked below.

L'Institut a microfilmé le meilleur exemplaire qu'il lui a été possible de se procurer. Les détails de cet exemplaire qui sont peut-être uniques du point de vue bibliographique, qui peuvent modifier une image reproduite, ou qui peuvent exiger une modification dans la méthode normale de filmage sont indiqués ci-dessous.

- Coloured covers/
Couverture de couleur
- Covers damaged/
Couverture endommagée
- Covers restored and/or laminated/
Couverture restaurée et/ou pelliculée
- Cover title missing/
Le titre de couverture manque
- Coloured maps/
Cartes géographiques en couleur
- Coloured ink (i.e. other than blue or black)/
Encre de couleur (i.e. autre que bleue ou noire)
- Coloured plates and/or illustrations/
Planches et/ou illustrations en couleur
- Bound with other material/
Relié avec d'autres documents
- Tight binding may cause shadows or distortion along interior margin/
La reliure serrée peut causer de l'ombre ou de la distorsion le long de la marge intérieure
- Blank leaves added during restoration may appear within the text. Whenever possible, these have been omitted from filming/
Il se peut que certaines pages blanches ajoutées lors d'une restauration apparaissent dans le texte, mais, lorsque cela était possible, ces pages n'ont pas été filmées.

- Coloured pages/
Pages de couleur
- Pages damaged/
Pages endommagées
- Pages restored and/or laminated/
Pages restaurées et/ou pelliculées
- Pages discoloured, stained or foxed/
Pages décolorées, tachetées ou piquées
- Pages detached/
Pages détachées
- Showthrough/
Transparence
- Quality of print varies/
Qualité inégale de l'impression
- Continuous pagination/
Pagination continue
- Includes index(es)/
Comprend un (des) index

Title on header taken from: /
Le titre de l'en-tête provient:

- Title page of issue/
Page de titre de la livraison
- Caption of issue/
Titre de départ de la livraison
- Masthead/
Générique (périodiques) de la livraison

Additional comments: /
Commentaires supplémentaires:

This item is filmed at the reduction ratio checked below /
Ce document est filmé au taux de réduction indiqué ci-dessous.

10X	14X	18X	22X	26X	30X
<input type="checkbox"/>	<input type="checkbox"/>	<input type="checkbox"/>	<input type="checkbox"/>	<input checked="" type="checkbox"/>	<input type="checkbox"/>
12X	16X	20X	24X	28X	32X

The copy filmed here has been reproduced thanks to the generosity of:

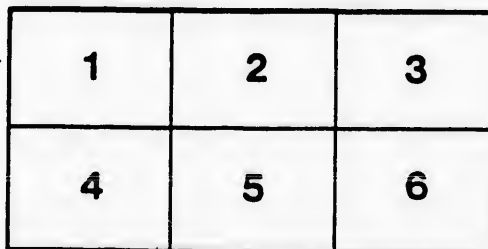
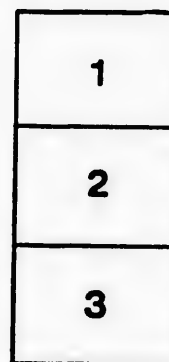
University of Guelph

The images appearing here are the best quality possible considering the condition and legibility of the original copy and in keeping with the filming contract specifications.

Original copies in printed paper covers are filmed beginning with the front cover and ending on the last page with a printed or illustrated impression, or the back cover when appropriate. All other original copies are filmed beginning on the first page with a printed or illustrated impression, and ending on the last page with a printed or illustrated impression.

The last recorded frame on each microfiche shall contain the symbol \rightarrow (meaning "CONTINUED"), or the symbol ∇ (meaning "END"), whichever applies.

Maps, plates, charts, etc., may be filmed at different reduction ratios. Those too large to be entirely included in one exposure are filmed beginning in the upper left hand corner, left to right and top to bottom, as many frames as required. The following diagrams illustrate the method:



L'exemplaire filmé fut reproduit grâce à la générosité de:

University of Guelph

Les images suivantes ont été reproduites avec le plus grand soin, compte tenu de la condition et de la netteté de l'exemplaire filmé, et en conformité avec les conditions du contrat de filmage.

Les exemplaires originaux dont la couverture en papier est imprimée sont filmés en commençant par le premier plat et en terminant soit par la dernière page qui comporte une empreinte d'impression ou d'illustration, soit par le second plat, selon le cas. Tous les autres exemplaires originaux sont filmés en commençant par la première page qui comporte une empreinte d'impression ou d'illustration et en terminant par la dernière page qui comporte une telle empreinte.

Un des symboles suivants apparaîtra sur la dernière image de chaque microfiche, selon le cas: le symbole \rightarrow signifie "A SUIVRE", le symbole ∇ signifie "FIN".

Les cartes, planches, tableaux, etc., peuvent être filmés à des taux de réduction différents. Lorsque le document est trop grand pour être reproduit en un seul cliché, il est filmé à partir de l'angle supérieur gauche, de gauche à droite, et de haut en bas, en prenant le nombre d'images nécessaire. Les diagrammes suivants illustrent la méthode.

qu'il
cet
de vue
ge
ation
ués





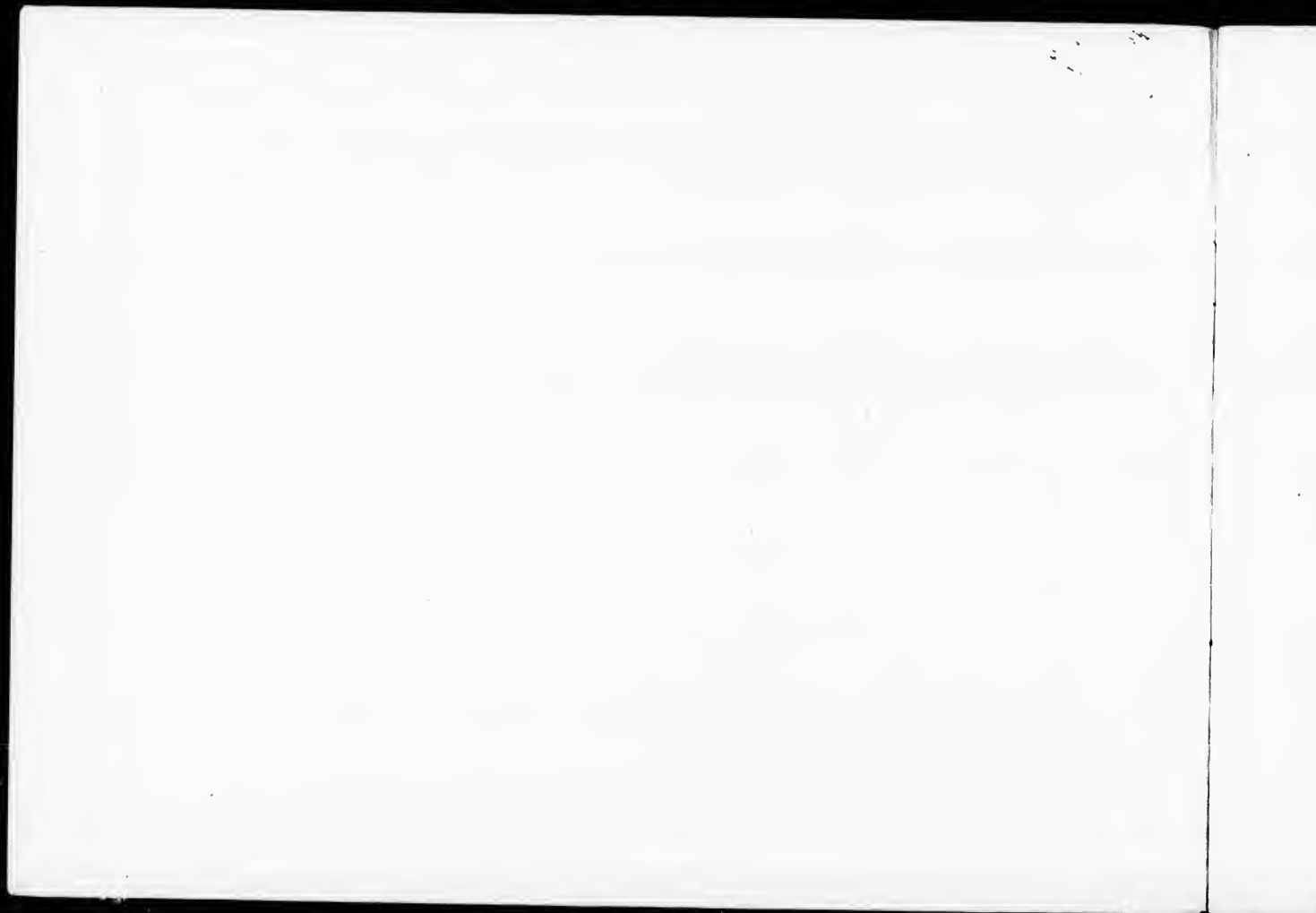
NORTHWAY
ONTARIO

12⁰⁰

NORTH BAY, ONTARIO

THE GATEWAY TO THE WEST AND NORTH
THE COUNTRY SEAT OF NIPISSING
ITS PAST, PRESENT AND ITS
FUTURE PROSPECTS

Published by A. C. RORABECK, DRUGGIST, NORTH BAY, ONT.



THE TOWN OF NORTH BAY



As the eastern gateway into newer Ontario, seated on the northern shore of Island Gem'd, Lake Nipissing, being one of the brightest, most prosperous towns in the New Ontario group. Its age is co-equal with the construction of the great transcontinental, ocean to ocean Canadian Pacific Railway; here they have established the official offices, shops and works of the Lake Superior Division. Here also is the present terminal of the Grand Trunk Railway from Toronto. The people's Temiscamingue and Northern Ontario Railway has its initial point here, opening up a vaster Canada than we knew. With its line running through the great clay belt, and forming a junction at a point two hundred miles north, near Lake Abitibi, making possible the early settlement of millions of acres of fertile lands, the future homes of thousands of happy and prosperous people. The extension of the Grand Trunk Railway from its present terminal point here to a point on the proposed Grand Trunk Pacific Railway is one of the newer schemes which we hope to see carried out in the near future. We also believe that the commencement of the construction of the Georgian Bay Ship Canal is only the question of the completion of the surveys now under way. When these great works are completed, North Bay will be a shipping point second to no inland point in the Dominion. The population is about 5,000; the buildings are substantial structures; brick blocks, business blocks, grace the public streets.

The homes of our citizens show the wealth, faith and architectural taste of the owners. Our churches are a credit to our people. Nothing has been left undone to make them perfect in size and architectural beauty. Our schools are many and strictly up-to-date in every respect. We also have a High School, large, commodious, beautiful in outward appearance, large grounds, and fully equipped to do the best work. Our Board of Trade was established in 1894, has been and is active in promoting the best business interests of the town. Our Council has under construction a system of Septic Tank Sewerage, this town being one of the first towns in Canada to adopt this system.

Also under contract is the changing of the source of water supply for the town from Lake Nipissing to Trout Lake, three and a half miles distant, and contemplate constructing a large reservoir on a mountain to hold millions of gallons of water; this at an elevation higher than the highest building in town will give us a Waterworks System superior to anything we know of.

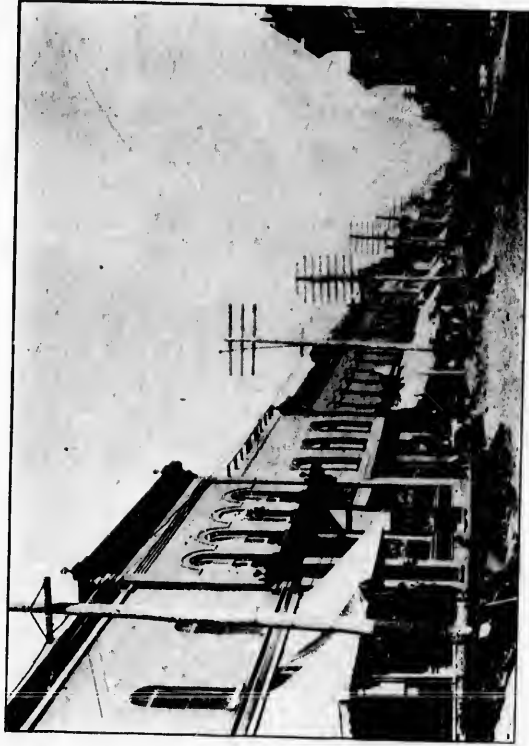
When these municipal undertakings are complete we will have all the modern conveniences of an up-to-date city, except street cars, which are coming. We found this place a wilderness in 1882. We made it a Post Office in a Township in 1884. We made it an Incorporated Town in 1890. We made it a County Town in 1895. We are still working shoulder to shoulder, with one aim always in sight, to make of our Town a City in the near future. Come and see us, and if possible remain with us, become one with us, and help us.



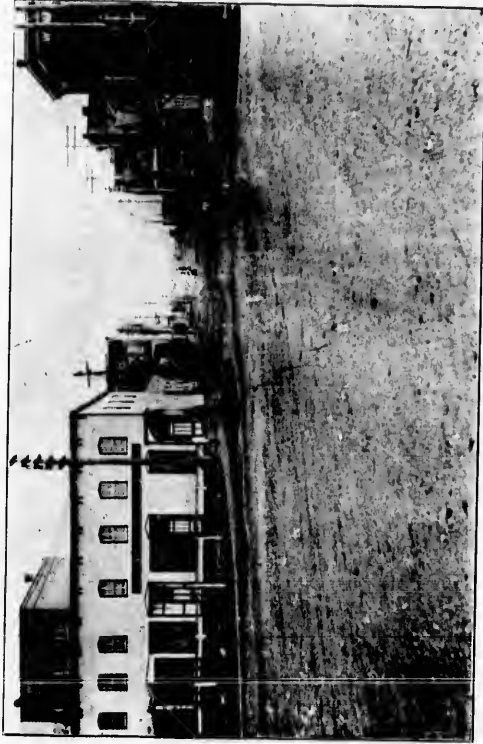
LOOKING SOUTH FROM CATHOLIC CHURCH TOWER



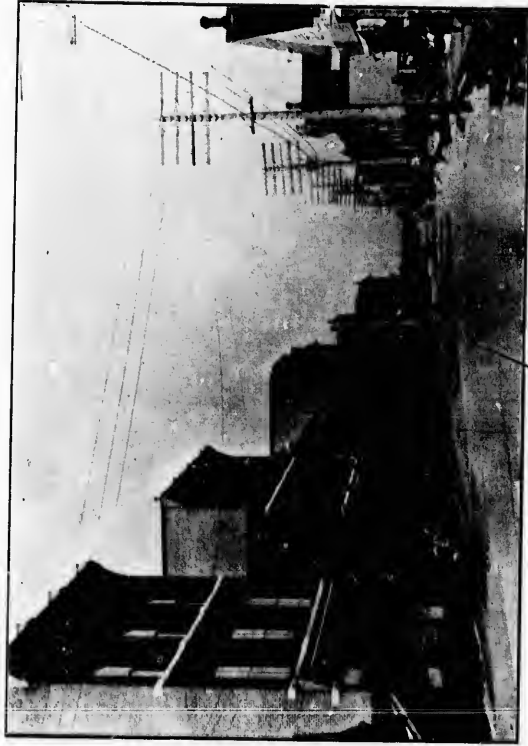
AT THE CHAUDIERE RAPIDS, FRENCH RIVER



NORTH SIDE OF MAIN STREET



FERGUSON STREET LOOKING NORTH



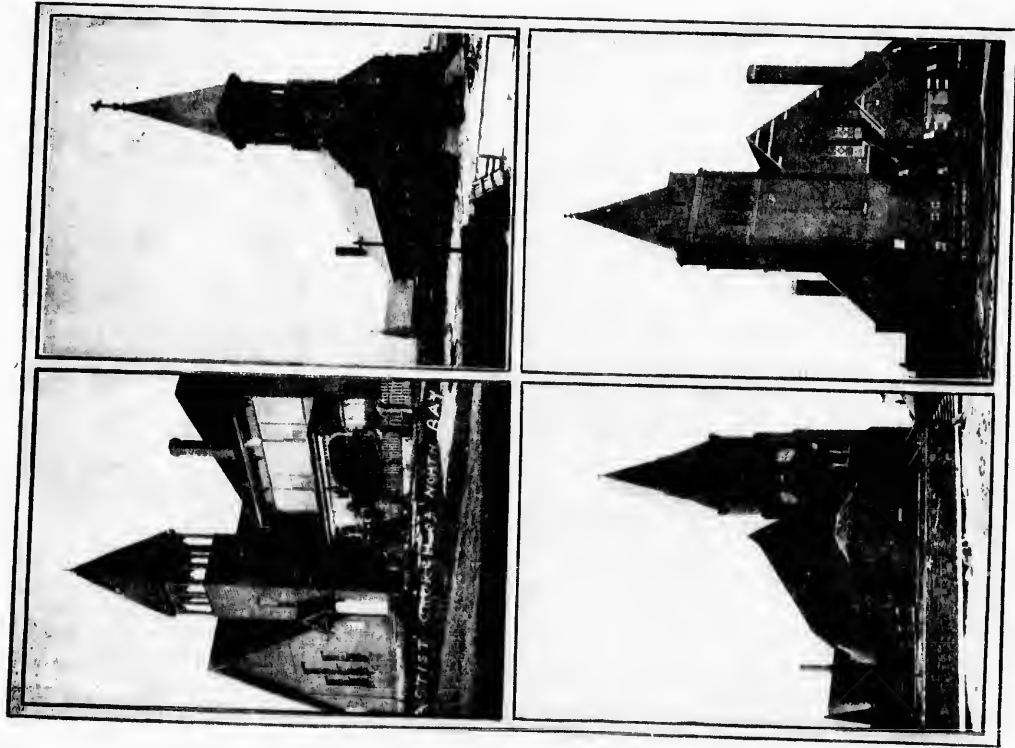
MAIN STREET, LOOKING WEST



THE CHONG GWON CLUB



PIC-NIC PARTY ON TROUT LAKE



ROMAN CATHOLIC CHURCH
PRESBYTERIAN CHURCH

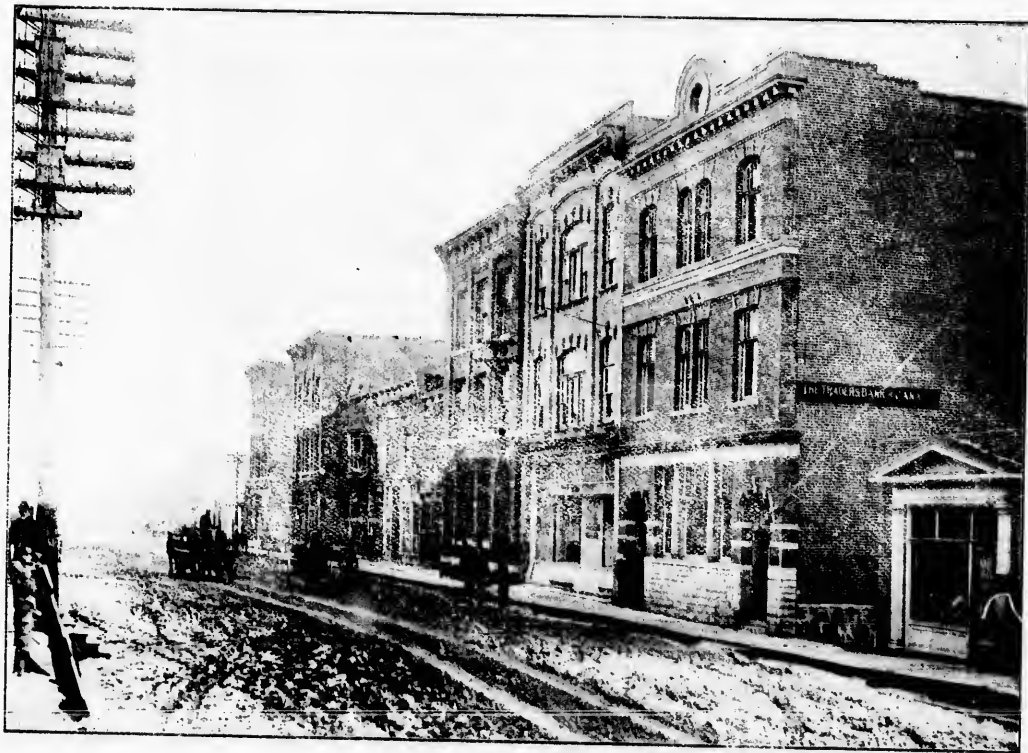
BAPTIST CHURCH
CHURCH OF ENGLAND

ROMAN CATHOLIC CHURCH
PRESBYTERIAN CHURCH

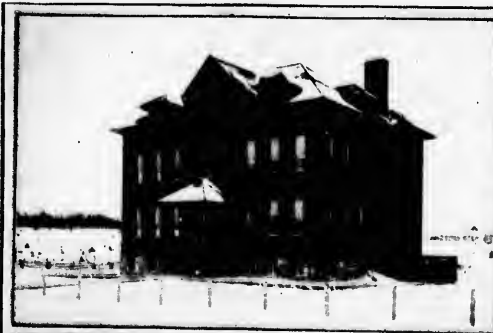
BAPTIST CHURCH
CHURCH OF ENGLAND



MCINTYRE STREET, LOOKING WEST



MAIN STREET, LOOKING EAST

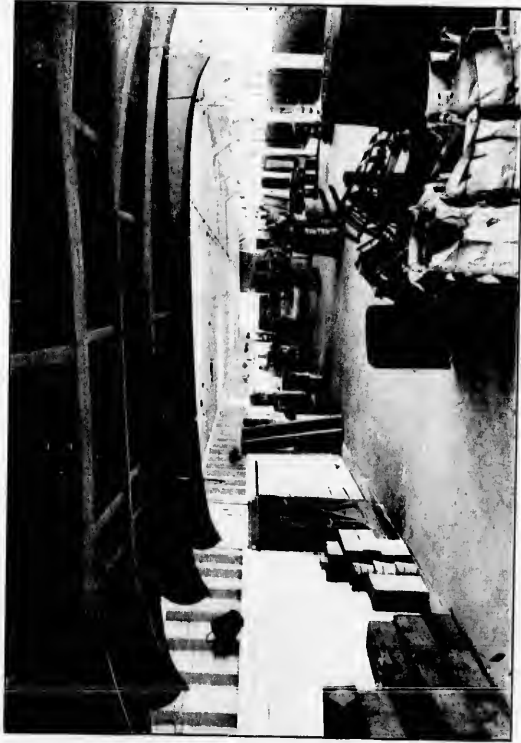


HIGHSCHOOL.
PUBLIC SCHOOL.

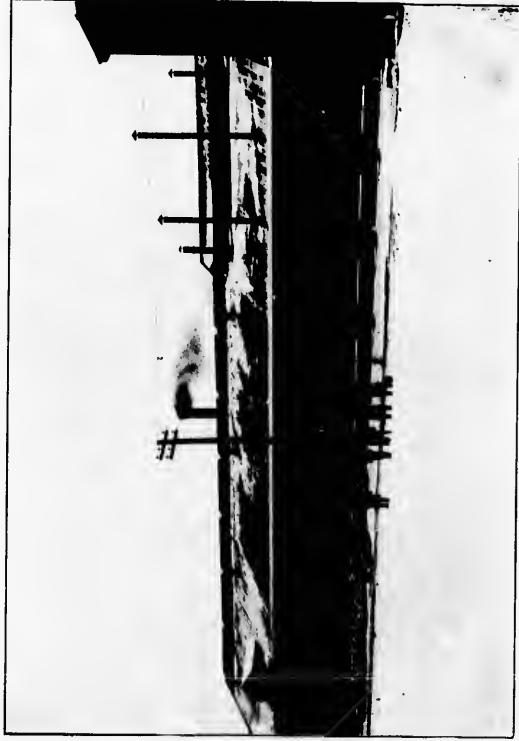
PUBLIC SCHOOL.
SEPARATE SCHOOL.



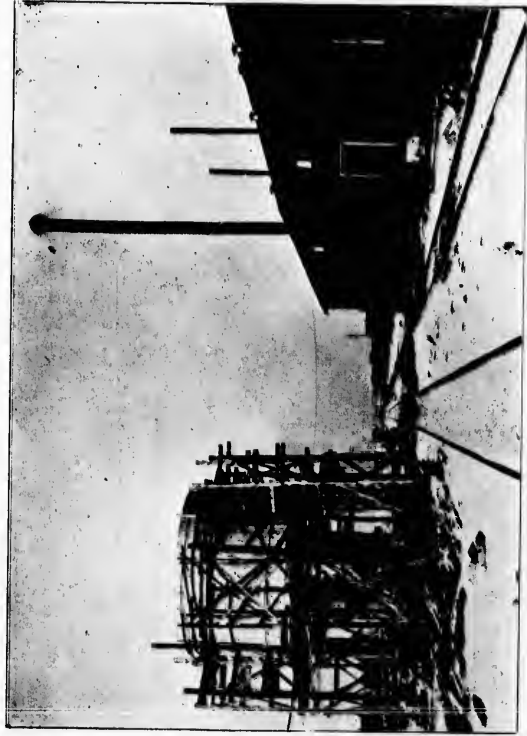
UNION STATION



INTERIOR OF C.P.R. FREIGHT SHED



C.P.R. MACHINE SHOPS



TERMINAL OF T. & N. O. RY

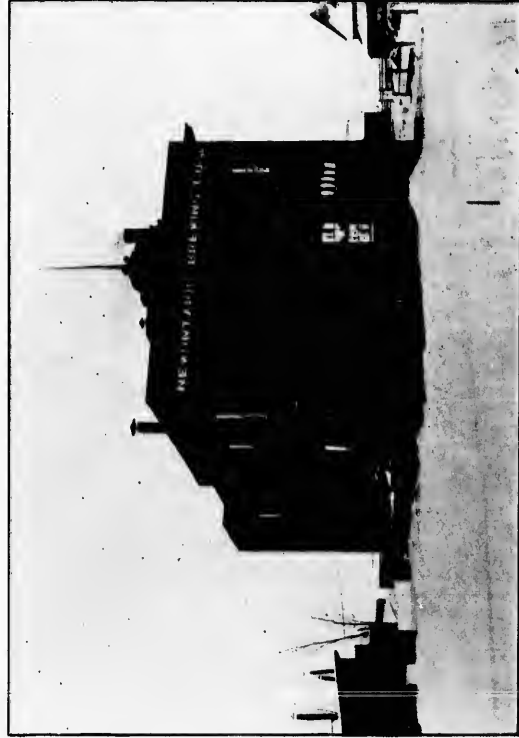


INTERIOR OF A. C. RORBECK'S DRUG STORE

INTERIOR OF A. C. ROBARCK'S DRUG STORE



INTERIOR OF PALACE SKATING RINK



NEW ONTARIO BREWERY



EXCAVATING FOR SEWER



ON TROUT LAKE



RESIDENCE OF MR. F. P. BRADY
RESIDENCE OF MR. B. M. MULLIGAN

RESIDENCE OF MR. JAS. E. YOUNG
RESIDENCE OF SHERIFF H. C. VARIN



PACIFIC HOTEL.
QUEEN'S HOTEL.

VICTORIAN HOSPITAL.
FERGUSON BLOCK—Under construction.

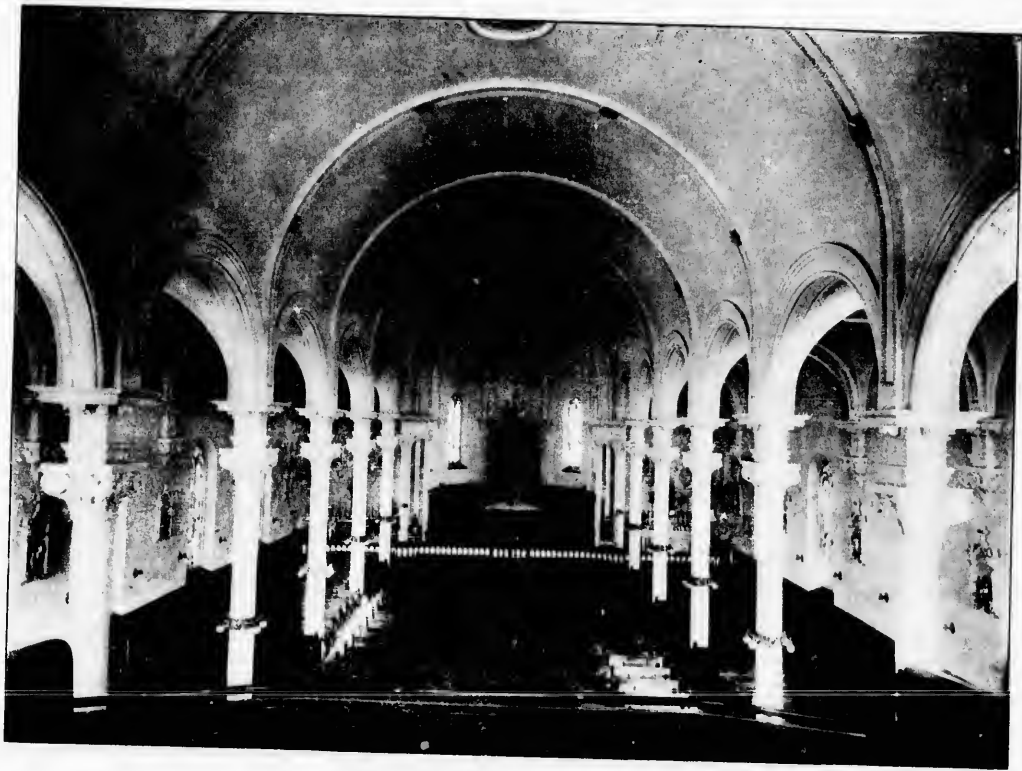


ON FRENCH RIVER



ON FRENCH RIVER
ON LAKE NIPISSING

DUCHESNEY FALLS
CHAUDIERE RAPIDS



INTERIOR ROMAN CATHOLIC CHURCH



AN HOUR'S FISHING NORTH OF NORTH BAY
1. ON FRENCH RIVER 2. AMONG THE ISLANDS OF TROTT LAKE



RESIDENCE OF MR. A. G. BROWNING
RESIDENCES OF MR. J. DEVINE AND MR. P. MCCOOL

RESIDENCE OF MR. A. C. RORABECK
RESIDENCE OF MRS. GLACKIN



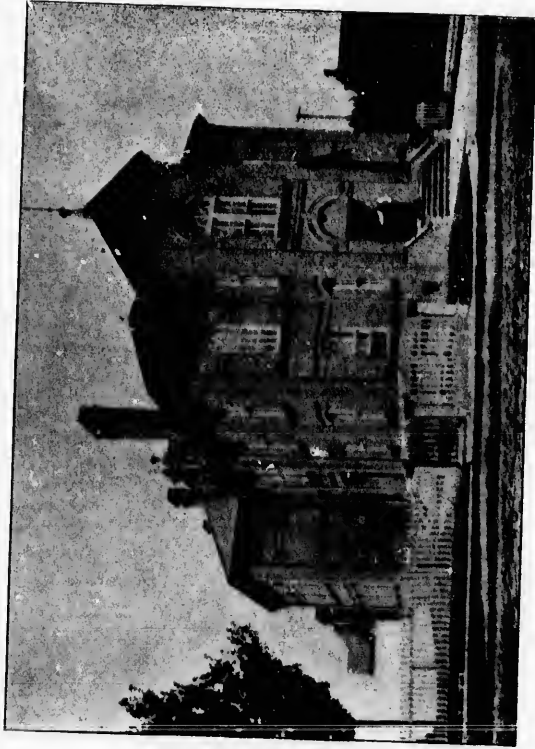
FIRST ARTS AND AGRICULTURAL EXHIBITION, OCT., 1894



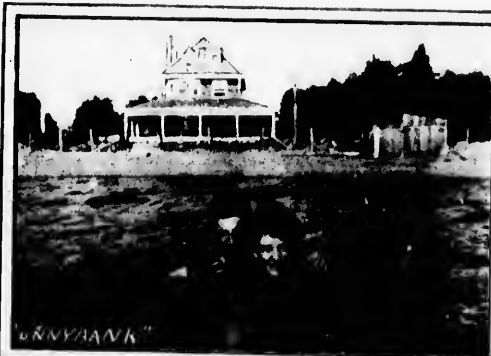
TOWN HALL



ON THE BEACH, SHOWING DOCK



DISTRICT COURT HOUSE



RESIDENCE OF JUDGE VALIN
RESIDENCE OF WM. MARTIN, SR.

RESIDENCE OF MR. D. PURVIS
RESIDENCE OF MR. S. AUBREY



C.P.R. STOCK YARDS



BIRCH GROVE IN NOVEMBER
MR. WOODCOCK'S SUMMER RESIDENCE, TURTLE LAKE

RESIDENCE OF MR. R. RANKIN
SHOP AND SIDINGS, T. & N. O. RY.



TWO TEAMS OF NORTH BAY CURLERS



NORTH BAY HOCKEY TEAM

