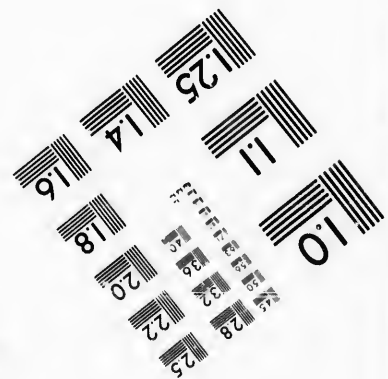
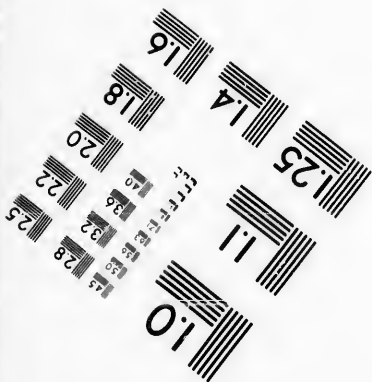
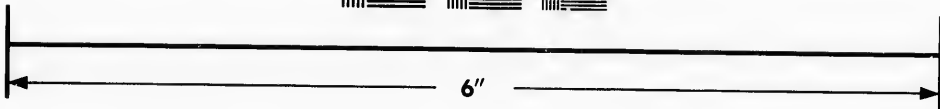
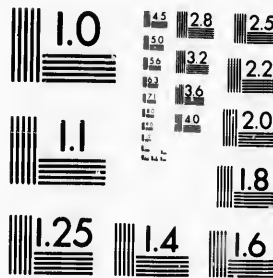


**IMAGE EVALUATION
TEST TARGET (MT-3)**



**Photographic
Sciences
Corporation**

23 WEST MAIN STREET
WEBSTER, N.Y. 14580
(716) 872-4503

1.8
2.0
2.2
2.5
2.8
3.2
3.6
4.0

**CIHM/ICMH
Microfiche
Series.**

**CIHM/ICMH
Collection de
microfiches.**



Canadian Institute for Historical Microreproductions / Institut canadien de microreproductions historiques

10
01

© 1987

Technical and Bibliographic Notes/Notes techniques et bibliographiques

The Institute has attempted to obtain the best original copy available for filming. Features of this copy which may be bibliographically unique, which may alter any of the images in the reproduction, or which may significantly change the usual method of filming, are checked below.

L'Institut a microfilmé le meilleur exemplaire qu'il lui a été possible de se procurer. Les détails de cet exemplaire qui sont peut-être uniques du point de vue bibliographique, qui peuvent modifier une image reproduite, ou qui peuvent exiger une modification dans la méthode normale de filmage sont indiqués ci-dessous.

- Coloured covers/
Couverture de couleur
- Covers damaged/
Couverture endommagée
- Covers restored and/or laminated/
Couverture restaurée et/ou pelliculée
- Cover title missing/
Le titre de couverture manque
- Coloured maps/
Cartes géographiques en couleur
- Coloured ink (i.e. other than blue or black)/
Encre de couleur (i.e. autre que bleue ou noire)
- Coloured plates and/or illustrations/
Planches et/ou illustrations en couleur
- Bound with other material/
Relié avec d'autres documents
- Tight binding may cause shadows or distortion
along interior margin/
La reliure serrée peut causer de l'ombre ou de la
distorsion le long de la marge intérieure
- Blank leaves added during restoration may
appear within the text. Whenever possible, these
have been omitted from filming/
Il se peut que certaines pages blanches ajoutées
lors d'une restauration apparaissent dans le texte,
mais, lorsque cela était possible, ces pages n'ont
pas été filmées.
- Additional comments:/
Commentaires supplémentaires:

- Coloured pages/
Pages de couleur
- Pages damaged/
Pages endommagées
- Pages restored and/or laminated/
Pages restaurées et/ou pelliculées
- Pages discoloured, stained or foxed/
Pages décolorées, tachetées ou piquées
- Pages detached/
Pages détachées
- Showthrough/
Transparence
- Quality of print varies/
Qualité inégale de l'impression
- Includes supplementary material/
Comprend du matériel supplémentaire
- Only edition available/
Seule édition disponible
- Pages wholly or partially obscured by errata
slips, tissues, etc., have been refilmed to
ensure the best possible image/
Les pages totalement ou partiellement
obscurcies par un feuillet d'errata, une pelure,
etc., ont été filmées à nouveau de façon à
obtenir la meilleure image possible.

This item is filmed at the reduction ratio checked below/
Ce document est filmé au taux de réduction indiqué ci-dessous.

10X	14X	18X	22X	26X	30X
<input type="checkbox"/>	<input type="checkbox"/>	<input type="checkbox"/>	<input type="checkbox"/>	<input checked="" type="checkbox"/>	<input type="checkbox"/>
12X	16X	20X	24X	28X	32X

The copy filmed here has been reproduced thanks to the generosity of:

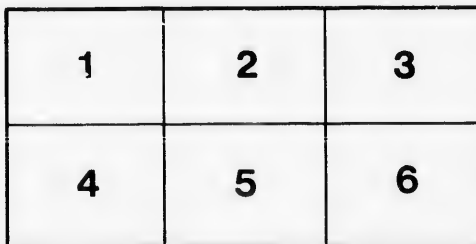
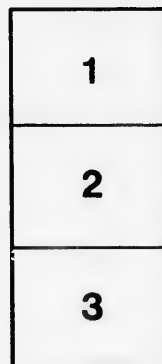
Harold Campbell Vaughan Memorial Library
Acadia University

The images appearing here are the best quality possible considering the condition and legibility of the original copy and in keeping with the filming contract specifications.

Original copies in printed paper covers are filmed beginning with the front cover and ending on the last page with a printed or illustrated impression, or the back cover when appropriate. All other original copies are filmed beginning on the first page with a printed or illustrated impression, and ending on the last page with a printed or illustrated impression.

The last recorded frame on each microfiche shall contain the symbol \rightarrow (meaning "CONTINUED"), or the symbol ∇ (meaning "END"), whichever applies.

Maps, plates, charts, etc., may be filmed at different reduction ratios. Those too large to be entirely included in one exposure are filmed beginning in the upper left hand corner, left to right and top to bottom, as many frames as required. The following diagrams illustrate the method:



L'exemplaire filmé fut reproduit grâce à la générosité de:

Harold Campbell Vaughan Memorial Library
Acadia University

Les images suivantes ont été reproduites avec le plus grand soin, compte tenu de la condition et de la netteté de l'exemplaire filmé, et en conformité avec les conditions du contrat de filmage.

Les exemplaires originaux dont la couverture en papier est imprimée sont filmés en commençant par le premier plat et en terminant soit par la dernière page qui comporte une empreinte d'impression ou d'illustration, soit par le second plat, selon le cas. Tous les autres exemplaires originaux sont filmés en commençant par la première page qui comporte une empreinte d'impression ou d'illustration et en terminant par la dernière page qui comporte une telle empreinte.

Un des symboles suivants apparaîtra sur la dernière image de chaque microfiche, selon le cas: le symbole \rightarrow signifie "A SUIVRE", le symbole ∇ signifie "FIN".

Les cartes, planches, tableaux, etc., peuvent être filmés à des taux de réduction différents. Lorsque le document est trop grand pour être reproduit en un seul cliché, il est filmé à partir de l'angle supérieur gauche, de gauche à droite, et de haut en bas, en prenant le nombre d'images nécessaire. Les diagrammes suivants illustrent la méthode.

ails
du
modifier
une
page

rata
o
elure,
à

32X

A
287.15
N 42

SOUVENIR

:: OF THE ::

15TH ANNUAL SESSION

:: OF THE ::

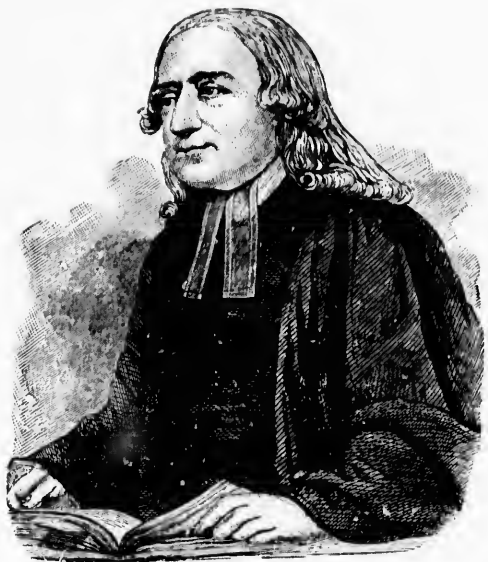
N. B. AND P. E. I. CONFERENCE

OF THE METHODIST CHURCH

HELD IN THE FIRST METHODIST CHURCH

CHARLOTTETOWN, P. E. ISLAND

JUNE, 1898



REV. JOHN WESLEY

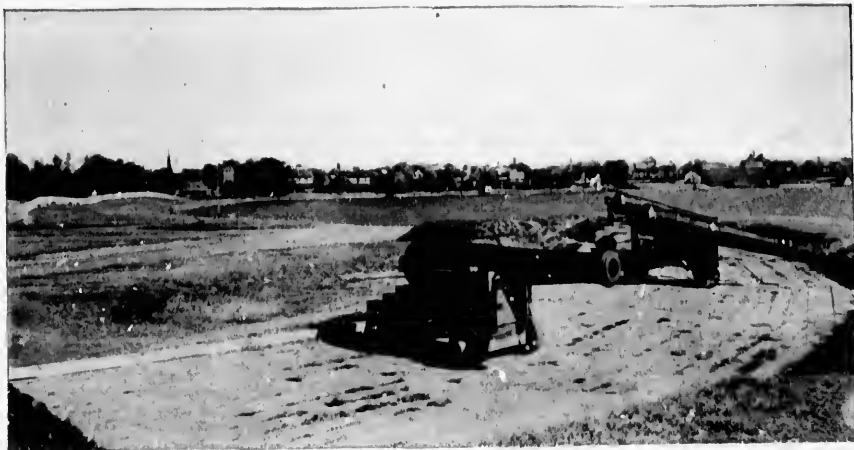
- 5 1 2 6

Prince Edward Island.

PRINCE EDWARD ISLAND has been justly designated the "Garden of Canada." The landscape is sufficiently undulating to relieve it from the monotony of the prairie, while bays and winding estuaries, with their placid waters and varied banks, abound, and together with verdant slopes, luxuriously waving grain fields and handsome residences, make up a scenery imposing and picturesque. The waters of the Gulf of St. Lawrence are almost as salt as those of the ocean itself, and the excessive heat of summer is tempered by breezes laden with the pure sweet taste of the sea. Fifty miles and more of white drifted sand-hills skirt the north side of the Island. The clear waters of the Gulf that roll and break in white foaming surf over the smooth broad beach, beaten hard by the continuous action of the waves, furnish bathing facilities acknowledged to be unequalled on the continent. When there is added to these attractive features a summer climate delightfully free from chilling fog and excessive heat; and the important fact is also noted that "the wing of life's best angel, Health, is ever on the breeze," a few of the many attractive features of this fair Province have been enumerated.

"A long low line of beach, with crest of trees,
With openings of rich verdure, emerald-hued,
***And this fair land is Epaygooyat called,
An isle of golden grain and healthful clime,
With vast fish-teeming waters, ocean-walled,
The smallest Province of the Maritime.

CHARLOTTETOWN, the Capital of this fair and fertile Province, is beautiful for situation. The streets are wide, and laid out at right angles, many of them adorned with beautiful shade trees. The public Squares, beautified with flowering plants and well-arranged walks, are surrounded by imposing public buildings and beautiful private residences. Close to its splendid and widely-known Market are the Post Office, the Provincial Building and the Law Courts, substantial and handsome buildings that would do honor to larger cities. These buildings are situated in Queen Square Gardens—a delightful and beautiful spot—whose flowers, fountain and other attractions are arranged to produce the most pleasing effect. From the roof of the Provincial Building a charming view of the city and its surroundings may be obtained. On a clear day the shores of the mainland, forty miles distant, can be distinctly seen. Nearer at hand, a view of the splendid—and almost land-locked—harbor, the three broad rivers that merge into Hillsborough Bay, with ornamental woods and fertile fields stretching away to the horizon, present "a fair and lovely scene." Beautiful drives, through "English-like scenery," lie in all directions around the Capital, and railroad and steamers furnish daily facilities for most pleasant excursions to the many points of interest in the "Garden of British North America."



CHARLOTTETOWN FROM VICTORIA PARK

Methodism in Prince Edward Island.

"When He first the work begun,
Small and feeble was His day;
Now the Word doth swiftly run,
Now it wins its widening way."

—*Charles Wesley.*

"A hundred years ago! What then?
There rose the world to bless,
A little band of faithful men,
A cloud of witnesses."

—*James Montgomery.*

METHODISM in Prince Edward Island dates from 1774. On the 31st day of May in that year, Mr. Benjamin Chappell and his wife reached this Province—then known as the Island of St. John's—and settled in New London, on the North side of the Island. In October, 1778, they removed to Charlottetown and "set in motion a train of measures" that resulted in the introduction and organization of the Methodist Church. Mr. Chappell was born in London, England, in 1740, and was the son of worthy and God-fearing parents. Mr. Wesley—under whose ministry he was converted—mentions him with respect in the fourth volume of his Journal, and maintained a correspondence with him to the end of his life. In his later years Mr. Chappell was wont to repeat with apparent delight incidents arising from his intimate acquaintance with the Founder of Methodism, and extracts from letters received from him bearing upon the progress of the work of God in this colony. Mr. Chappell was a man of integrity and considerable ability. In 1779 he was elected a member of the Legislative Assembly, "and after having been engaged in several departments of the public service," was in 1802 appointed "Postmaster of the colony"—which position he held during the remainder of his life. From the time of his arrival in the colony, he was deeply impressed with the spiritual destitution of the inhabitants, and at once organized the distinctive and peculiar services of Methodism—which without interruption have been continued to the present time. This godly and devoted man ended his journey on the 6th day of January, 1825, in the 83rd year of his age. The late Rev. Dr. Richey, who visited him in 1823, referred to him, when "bending over the tomb under the accumulated infirmities of extreme old age," as remarkably clear and collected in mind; ready after a life of irreproachable godliness, to be offered up; and awaiting not only without fear, but in joyful anticipation the hour of his departure from earth. "And I heard a voice from heaven saying, Write, Blessed are the dead which die in the Lord from henceforth: yea, saith the Spirit, that they may rest from their labors: for their works follow after them."



COURT HOUSE, CHARLOTTETOWN

In 1801 Mr. Chappell's hands were strengthened by the arrival of Mr. Thomas Dawson—one of John Wesley's early band of local preachers. The late Rev. Stephen Bamford, who at one time was Superintendent of the Charlottetown Circuit, had, in his early days, frequently heard Mr. Dawson preach at the Blaris Camp in Ireland. He was born in County Caven, Ireland, in 1762. When sixteen years of age he entered the Army, and as an officer served in the American war, under Lord Cornwallis, until peace was declared. Returning to Ireland he joined the Royal Irish Artillery, and subsequently served as Paymaster in the battalion of Caven Militia, under the Earl of Bellamont, until 1799, when he finally retired from military service. In March, 1801, he took passage for Philadelphia on his way to this Province to secure possession of a tract of land he had purchased at the head of Hillsborough River. While in Philadelphia influential citizens, evidently impressed with his qualifications, urged him to accept the position of Chaplain in one of their frigates; but his loyalty to kieg and country prevented his acceptance of the tempting offer. He at once proceeded on his journey, reaching Charlottetown on the 16th day of June, and immediately took charge of his estate, twenty-four miles distant from the Capital, and which is still known as "Dawson's Grove."

Mr. Dawson at once exerted himself to promote the cause of religion—and his name is intimately connected with the rise and progress of Methodism in Prince Edward Island. He found four members of the church in Charlottetown—Benjamin Chappell and his wife, Joseph Robinson and Mrs. Smith—and proved a most important auxiliary to the small and struggling cause. Services were frequently conducted by him in town, sometimes in the "hired room," at Samuel Hutchinson's, near the jail, Townal Street; but generally at the house of Mrs. Smith, which stood on the site of the present residence of Miss Morris, and adjoined the residence and Post Office of Mr. Chappell, Water Street. He also visited every settlement on the Island, holding services among the people, who hailed his coming with great delight. The forests were then in their primitive grandeur; there were no roads, few horses, and no carriages of any kind, no bridges; and the faithful itinerant in the midst of hardships and privations, now altogether unknown, did the work of an evangelist, and made proof of his ministry. His youngest son, referring to his father's faith and work, observes that "no obstacle seemed so great as to hinder him from performing what he considered his duty." Although a man of strong constitution, the exposure and long journeys were too heavy a tax on his physical strength, and after a short illness, in the 42nd year of his age, he closed his useful and honorable career, happy in God and full of hope and peace. Mr. Dawson was a pious and intelligent man, of liberal education, whose practical ministry was very acceptable to the people, and was rendered the happy means of deepening and spreading the work of God. His name is still recalled with grateful emotion. "For after he had in his own generation served the counsel of God," he "fell on sleep, and was laid unto his fathers." "Precious in the sight of the Lord is the death of his saints."

REV. WILLIAM BLACK.

The first Methodist Minister to visit Charlottetown was the Rev. William Black, of blessed memory. He was one of Mr. Wesley's converts, and is justly recognized as the Apostle of Methodism in the Maritime Provinces. His ministry was convincing, congregations overflowed, multitudes were converted, and the



RESIDENCES, UPPER PRINCE STREET

Church, through his instrumentality, organized in Nova Scotia, New Brunswick, Newfoundland and Prince Edward Island. Under date October 20th, 1783, he makes the following entry in his journal: "I set off for the Island of St. John's, at the earnest and repeated invitation of Mr. B. Chappell, where I arrived on the 22nd, and tarried about a fortnight. I preached several times at Charlottetown and St. Peters; hut alas! the people in general appeared altogether ignorant of the nature of true religion, and of that faith which worketh by love."

Mr. Black made a second visit in the autumn of 1794. Mr. Nathaniel Wright, of Bedeque, a godly and devoted man, crossed to Nova Scotia in his own vessel to lay before Mr. Black the moral condition of the people, and to convey him to the Island. The visit was productive of great good. At Bedeque Mr. Wright and his family were baptized and a church of twenty members organized. Mr. Black's reception at Charlottetown was of a most pleasing character. The people heard him gladly, and Governor Fanning "expressed much friendship," and offered to assist in the "erection of a chapel in town." Thus the foundations of Methodism, in the beautiful Island of Prince Edward, were laid. Mr. Black's work proved to be of a genuine and permanent character. Classes were formed at Charlottetown, Bedeque, Tryon, Murray Harbor, and other settlements in the Province, and his work developed on thoroughly Wesleyan lines. He was succeeded by James Bulpit, John Hick, John Bass Strong, and a long succession of godly and devoted men, whose memories are cherished, and whose "works follow after them." Through their labors, and by the blessing of the Great Head of the Church, Methodism has extended her borders, multiplied her converts, erected beautiful churches, well furnished and commodious parsonages; and the last census brought out the encouraging fact, that during the decade the Methodist Church in Prince Edward Island, as the result of sustained evangelical enterprise, and the building up of believers in their most holy faith, had doubled the number of its adherents.

"More and more it spreads and grows,
Ever mighty to prevail."

THE FIRST METHODIST CHURCH, CHARLOTTETOWN.

In that invaluable work "Methodism in Eastern British America," Rev. Dr. Smith informs us that in November, 1814, the frame of the first church building was raised—special assistance being given on the occasion by British soldiers—and in the partly finished edifice the first sermon was preached in June, 1816. In order to accommodate the rapidly increasing congregation, a site was secured on Prince Street, and in 1835 a new church was dedicated, described as "a strong, neat and commodious building, that will comfortably seat 600 hearers, and is also an ornament to the town." "Of the original trustees the most widely known was Isaac Smith, an Englishman of most estimable character, good mental powers, and an acceptable local preacher; Henry Smith, his brother, who died at a good old age in New Zealand; Robert Longworth, of Loyalist parentage; Thomas Dawson, son of the early local preacher of the same name; and also John Boyer, Christopher Cross, John Trenaman, Charles Welsh, and William Tanton—faithful and zealous men." In 1838-39 the church "was considerably enlarged," and a few years later "a spacious wing was added." Associated with the trustees in this work was the following committee: Ralph Brecken, James



FIRST METHODIST CHURCH AND PARSONAGE.

Moore, George Beer, jr., William Heard, John Williams, Mark Butcher and John T. Thomas. "When thus enlarged the Sanctuary could boast of no special architectural attractions; but the many occasions on which the Most High did in very deed dwell with men gathered within its walls, and the rich music for which it became famed, made it difficult for any resident or visiting worshipper ever to forget it."

THE PRESENT CHURCH.

The corner stone of the present spacious and imposing edifice was laid on May 24th, 1863, by Mrs. Dundas, "the Lady of His Excellency the Lieutenant Governor of Prince Edward Island." The scroll deposited in the corner stone contained the following inscription: "The corner stone of the Wesleyan Church was laid on the 25th day of May, A.D. 1863, in the twenty-sixth year of the reign of Queen Victoria, by Mrs. Dundas, the Lady of His Excellency, the Lieutenant Governor of Prince Edward Island, in the presence of a large concourse of persons; the Rev. John Brewster being Superintendent of the Circuit, and the following who have hereunto signed their names, being the Trustees of the Methodist property at Charlottetown: Robert Longworth, Richard Heartz, James Moore, Thomas Alley, Thomas Dawson, George Beer, Charles Young, Mark Butcher, William Heard." *The Monitor* newspaper contained a lengthy and interesting account of the opening services, when on the 13th of November, 1864, the new Sanctuary was solemnly dedicated to the worship of Almighty God, from which we take the following

ARCHITECTURAL DESCRIPTION.

"The whole structure is 115 feet long, by 68 feet wide, and 42 feet high to the eaves. The basement story is 12 feet 7 inches high, 4 feet of which is below the surface line. The style of architecture is Gothic of the 16th century. The material is brick, rough cast, Island made, and all the trimmings are Nova Scotia freestone.

"The front is divided into three compartments by two octagonal turrets, of about 135 feet high. A large central window is between the turrets, 32 feet high, 15 feet wide, with ornamental Gothic top.

"The roof is lofty pitch, covered with Dutches slate. There are 150 pews on the main floor which will seat 900 persons. The gallery extends all round the building and contains 78 pews which will seat 650 persons. The ceiling is plain Gothic, starting from the cornice, and the height from the main floor to the apex is 43 feet, 4 inches.

"In the basement is a large lecture room, 63 feet by 54 feet, and six class rooms, each 25 feet by 12 feet. The whole building is heated by steam. It is, as a whole, a beautiful, commodious and convenient church, and we must pronounce it an honor to the friends of Methodism who have reared it. Long may it stand!

"Thomas Alley and Mark Butcher, Esquires, were the architects of this splendid edifice."



"FAIRHOLM"—RESIDENCE OF HON. B. ROGERS

A
287.15
•N42

CHURCH RENOVATION.

"Great improvements have recently been made in the interior of the church. In the summer of 1897 Mr. Burke, of Burke & Horwood, Toronto, came to Charlottetown by appointment, and was engaged to prepare plans for necessary renovation and changes in the church. His plans were accepted, a portion of which have been successfully carried out. The ceiling is now of wood, and changes in its formation have added length and height to the appearance of the building. The eastern or pulpit end has been wonderfully improved by a triple arch and arch traceries in wood under the arches immediately over the organ. The organ has been lowered several feet and a new choir and pulpit platform constructed. The choir platform or plat's will hold 48 chairs, and will necessitate a choir several times larger than the former one. The pulpit platform is much larger than formerly, and the old pulpit has been removed and a small desk furnished in its place. Two new vestries have been made on either side of the organ gallery on main floor of church. These two rooms will be used on Sunday afternoons for adult Bible Classes. Before commencing the interior work it was found necessary to re-slate one side of the roof.

The ladies of the congregation have in a marvellously short time collected the money, ordered from the firm of Robert McCausland & Co., Toronto, and placed in the church very neat and costly stained glass windows, comprising the large window in the western end and 14 side windows. Provision has been made for a number of memorial windows, and it is expected these will be completed and placed in position before the end of the year. The ladies have also generously provided covering for the aisles and platform, and have also assumed the expense of the rich traceries under the arches immediately over the organ.

The total cost of all improvements, including the slating, will be, in round numbers, \$5000.00, and all will be completed without any debt on the congregation. Work amounting to \$500 has been undertaken (with consent) by the Building Committee, they providing in the near future monies to pay for the same. In addition to work already completed the plan adopted covers new and modern circular pews without upholstering, changes to main vestibules, and a new and elaborate stone porch and main entrance, running up between the two turrets and finishing in an open arch over the large window. These desirable additions have not yet been undertaken, but having earnestly started in the work of needed renovation, no doubt the good work will continue until completed by the congregation."

The following gentlemen compose the present Board of Trustees: Messrs. Richard Hartz, L. L. Beer, W. A. Weeks, William Boyle, F. S. Moore, James Paton, L. M. Poole, W. W. Stanley, Mark Wright, Henry Smith; with whom there was associated in the renovation of the church, the following representatives of the congregation: Messrs. Benjamin Rogers, Dr. Taylor, Benjamin Hartz, Philip Large, W. W. Beer and G. A. Sharp, Benjamin Sellar.

CONGREGATIONAL WORK.

The First Church is well known; numerically and financially strong, and is extending the work of the Master with enterprise and success. Too much cannot be said of the activity, benevolence, high Christian character, and loyalty of its people to the Lord Jesus Christ. The present membership is 430, and the congregation is large and enthusiastic in all that pertains to aggressive church work. The following



RESIDENCE OF MR. FRANK R. HEARTZ.

organizations exist in the congregation, whose several names in a measure indicate the character of the work engaged in by each: The Epworth League of Christian Endeavour; the Junior League; the Missionary Committee; the Woman's Missionary Society, with its attached Band; the Sunday School Missionary Society; the Ladies' Aid Society; the "King's Daughters;" the Dorcas Society, and the Central Relief Committee. The seed sown has expanded, under the fostering hand of God, into a large and prosperous church; the successes of the past are full of encouragement for the future, and "the best of all is, God is with us." The music has ever been a distinctive feature. The congregational singing is excellent and hearty. A large loyal and efficient choir under the leadership of Prof. Earle, renders impressively the best Church music, and leads the great congregation in "Holy Song."

THE SUNDAY SCHOOL.

In the year 1820 Mr. Walter Johnson, of Scotland, arrived in the colony, and spent a year "with a design to establish Sabbath Schools, and investigate the religious interests of the country." He records that "the single Sunday School in existence," on his arrival, "was that of the Methodists at Charlottetown," and that his most ready helpers in his work belonged to the Methodist Communion.

As early as 1737 John Wesley gathered the children in Savannah, Georgia, for religious instruction, and in 1786 Bishop Asbury organized the first Sunday School in America. The early Methodists in Charlottetown were "baptized by the same spirit, and believed the same things." They availed themselves of every means which could promote the work they had under aker—the spread of scriptural holiness throughout the land—and notably adopted the Sunday School. They appreciated the great importance of the Christian education of the young, and set apart a portion of the Sabbath to "teach the Word," and to train the children in "the nurture and admonition of the Lord." And as a result, in all the history of the church the Sunday School has been an active and energetic department of work, putting its stamp of Christian beauty and blessing upon the children, and teaching lessons of love and gentleness which have filled the homes of the congregation with happiness, sweetness and song. The school is at present large, prosperous, and well organized—having a staff of 52 officers and teachers, and 537 scholars in its three departments. John A. Moore, Esq., and James Paton, Esq., are the efficient Superintendents, and under their able management the School is doing a grand work in assisting to train the children of the church, and in scattering seeds of blessings in the homes of the congregation.

CHURCH EXTENSION.

The First Church has from its organization been the home of men and women "full of good works and alms-deeds." They organized Sunday Schools, conducted evangelistic services in different parts of the city, until 1871, a building was secured and a cause organized—which has since developed into the active and growing congregation of Grace Church, whose origin and history will be found elsewhere.

In 1889, in the eastern part of the city, Kensington Hall was erected and set apart by the First Church for mission work. A devoted band of workers make the Hall the centre of their visitation of the sick and relief of the poor, Sunday School and Home-department work, and "cottage meetings." The school



RESIDENCE OF L. L. BEER, ESQ

numbers 10 officers and teachers, 140 scholars, and is well equipped. Under the popular management of Miss Mary White and her devoted assistants, the work in Kensington Hall is in a prosperous condition.

The following gentlemen were appointed by the Quarterly Official Board, to hold in trust the Kensington Hall property: Messrs. L. L. Beer, E. H. Beer, W. J. Miller, C. A. Clark, G. H. Hazard, G. H. Taylor, G. D. Wright, W. C. Turner.

GRACE CHURCH.

In the year 1871 it was thought desirable to extend the operations of the Society making such rapid strides in the First Methodist Church, so the Free Church building, then situated on Euston Street, facing Prince Street, was rented for a Mission Church and Sunday School. The new Society showed signs of growth from the beginning, and as early as 1877 a new church was erected on Upper Prince Street, on the site of the present building, and was opened with appropriate services on the 14th of October in that year. Again in 1884 it was found necessary to enlarge the church building to accommodate this growing congregation.

This church was, until the year 1883, worked in connection with the First Church, and under the same Quarterly Official Board. The young men who were in charge of the new mission church, under the superintendency of the pastor of the First Church, were as follows:—

1871—Rev. Robert McArthur.
1873—Rev. William Penna.
1874—Rev. Robert Crisp.
1876—Rev. William Fielcier.

1877—Rev. George Steel.
1879—Rev. G. M. Campbell.
1880—Rev. William Tippett.
1882—Rev. J. W. Wadman.

In the year 1883 the union of the Methodist bodies into one great Methodist Church took place, and the congregation of the Bible Christian Church united with the Upper Methodist Church and became one congregation, under the pastorate of the Rev. S. H. Rice, who was at the time of the union in charge of the Bible Christian Church in this city. From that time the Upper Methodist Church became an independent congregation, and organized its own Quarterly Board, and did its own business independently of the First Church. To accommodate the united congregations it was deemed necessary to enlarge the church building, and with the hope, some day, of building a further addition, and setting the old church apart for the use of the Sunday School, the present building in its peculiar formation is accounted for. The building is capable of seating 700 persons with comfort.

The pastors in charge since the independency of the circuit were as follows:—Rev. S. H. Rice, Rev. William Harrison, Rev. W. W. Brewer, Rev. C. W. Hamilton, Rev. G. C. P. Palmer. The present pastor is the Rev. W. J. Kirby.



GRACE CHURCH

For some time the congregation had felt the inconvenience of the many names by which the church was called by the public, and steps were taken to settle upon a name which should be appropriate to the church and easy of memory. At the time of this decision a gracious work was going on in the congregation and it suggested the beautiful name of GRACE CHURCH and on February 10, 1897, the Quarterly Board decided to call the church Grace Church (Methodist), which the Conference of the same year confirmed. The present membership is 223, with 170 families on the pastor's visiting list. The Sabbath School has a total membership of 525. The Superintendent of the Sabbath School is Dr. J. H. Ayers, and the Recording Steward of the Circuit is Mr. James Carter. In connection with the church is a flourishing Epworth League of Christian Endeavour, and a prosperous Sabbath School Mite Society. The Sunday School holds its sessions at 2.15, and the Epworth League holds its weekly meetings at 3.30 every Sunday.

This church is beautifully situated, and owns a valuable property on which the church and parsonage are built, immediately opposite the Upper Prince Street Public School building. Mr. George W. Ritchie, Pew Steward, will give any information to strangers regarding sittings in the church.

THE CLOSING WORD.

Methodism occupies a commanding position in Charlottetown. Her adherents are numerous and influential, and the congregational work and the schemes of the denomination are intelligently and liberally supported. The church of four members that welcomed Mr. Thomas Dawson in 1801, has greatly increased and "become two hands." How small and feeble were the beginnings; how encouraging and suggestive the developments. The patriarchs of the church entered upon their work with consecrated hearts. They proclaimed daily, by precept and example, the Gospel of Jesus Christ—the old Gospel of repentance and faith; the fullness, freeness and efficacy of the atonement, the witness of the Spirit to the believer's adoption into the family of God, and the entire sanctification of heart and life. Earnest, energetic, strongly evangelical, the church has gone on since the days of its organization, faithfully performing its work, until in intensity of spirit and practical effectiveness of success, we see the fulfillment of prophetic declaration: "A little one shall become a thousand, and a small one a strong nation: I the Lord will hasten it in his time." Less than one hundred years ago a small "hired room" comfortably held the assembled congregation; now Methodist property in Charlottetown—consisting of two spacious and imposing Churches, with seating accommodation for 2300 persons, one mission-hall, and two substantial and well furnished parsonages—is valued at \$51,000.00. Connected with these two churches are three ministers, an efficient staff of local-preachers and class-leaders, a membership of 659, and an enrollment of upwards of 1100 in the three Sunday Schools. During the Conference year of 1897-8 there was raised for the Schemes of the Church \$2,200.00, and for all other purposes \$8,900.00.

[Attention is directed to the fact that all cards found in the Souvenir Directory are from adherents of the Methodist Church, or business establishments connected by at least one member with the congregation.]



"FARRINGFORD" RESIDENCE OF HON. D. J. VAIL, U. S. CONSUL

LIST OF MINISTERS OF THE FIRST METHODIST CHURCH, CHARLOTTETOWN, FROM 1807 TO 1875.

James Burbit, John Hark, John B. Stevas, William Fisheron, Robert Alder, D. D., Stephen Bamford, William Bart, Henry Pope, William Temple, Matthew Riches, D. D., William McDermott, Stephen Evans, William Dawson, J. P. Hetherington, Richard Knight, D. D., William Smith, J. B. Strong, William Webb, Charles D. Voth, D. D., Edmund Roberts, D. D., Richard Knapp, Ephraim Evans, D. D., John McMurray, D. D., Joshua Satchell, Henry Daniel, D. D., John Brewster, Matthew Kealey, D. D., Henry Pope, D. D., Geo. W. Millington, L. L. D., James Taylor, D. D., Currie, John Lathern, D. D., Humphrey P. Cowperthwaite, A. M., John Bayne, D. Sc., Job Sheaton, John Read, Waldron W. Brewer, George M. Campbell.

LIST OF ASSISTANT MINISTERS FROM 1845 TO 1882, WHEN GRACE CHURCH WAS MADE AN INDEPENDENT CIRCUIT.

John Prince, William McCarty, Henry Pope, D. D., J. R. Narraway, A. M., Thomas Gaetz, T. M. Albrighton, William Ryan, W. W. Perkins, Richard Pratt, W. C. Brown, Edwin Evans, D. D., T. D. Hart, Howard Sprague, D. D., Jabez A. Rogers, Robert McArthur, William Penna, Robert Crisp, William Fielder, George Steel, George M. Campbell, William Tippet, J. W. Waldman, A. M.

"METHODIST PREACHERS' PLAN FOR CHARLOTTETOWN, CORNWALL, WINSLOE, YORK AND POWNAL CIRCUITS"
CONTAINS THE FOLLOWING NAMES:

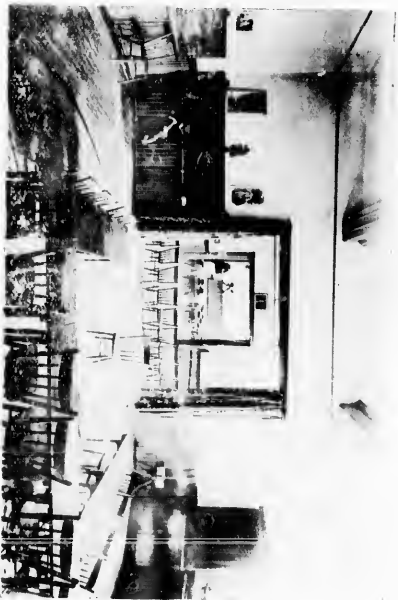
MINISTERS: George M. Campbell, Douglas H. Lodge, William J. Kirby, George F. Dawson, M. A., A. D. McLeod, Richard Opie, William J. Howard, B. D.

LOCAL PREACHERS: Richard Johnson, M. D., Joseph Knight, William Boyle, John T. Mellish, A. M., LL. B., George Bryenton, N. Pearden, J. Bonnie, Thomas Ayers, Harry Ruckham, Isaac Bryenton, G. H. Taylor, John Prowse, George Carter, J. D. Seanna, Samuel Wheatley, J. Matthews, Alfred Bowyer, George Ruckham, George Ayers, John Wood, F. Bryenton, John Edwards, J. Ayers, D. D. S., H. Johnson, J. Wheatley.

Richard Johnson, M. D., was ordained in 1861, and was a member of the old Conference of Eastern British America. Dr. Johnson was an excellent preacher and did effective work on his circuits. A serious throat trouble made it necessary for him to retire from the active work in 1864. He shortly after commenced the practice of medicine in this city, and as Local-preacher and Class-leader has rendered valuable service to the First Church.



KINDEGARTEN



KINDEGARTEN (INTERIOR)

WESLEYAN METHODIST SCHOOL
CHARLOTTETOWN
PARTIALLY ENDOWED

TRUSTEES:—The Reverend George M. Campbell, ex-officio; L. L. Beer, Esq; Richard Johnson, M. D., Lt. Col. F. S. Moore; L. M. Poole, Esq; Richard Hertz, Esq; John Newson, Esq., L. E. Prowse, Esq; M. L. A.

OFFICERS OF THE BOARD :—Chairman, Rev. George M. Campbell; Secretary, Lt. Col. Moore; Joint-Treasurers, L. L. Beer, Esq. and R. Johnson, M. D.

In the autumn of 1895 the Board decided to open a Kindergarten. The services of Miss Sayre, a teacher of ability and an accomplished Kindergartener were secured. Miss Sayre stands high in her profession, and under her efficient management the Kindergarten has been deservedly popular, and is meeting a long felt need in the city.

A Primary School was opened in 1897, Miss Lena Barrette—a licensed teacher and a successful instructor—was engaged by the Board, and under her care this Department has increased in numbers, and is doing excellent work.

The regular curriculum for Kindergarteners has been adopted by the Board, and Diplomas will be granted to all who complete the prescribed course satisfactorily.

In 1896 the Trustees purchased the valuable property on the corner of Prince and Grafton Streets for the purposes of the Trust. At considerable expense they provided a modern school-building, with three large and well arranged class-rooms, and a spacious assembly-hall—which is also used for public lectures and concerts.

The following is the staff of the school:—Miss Sayre, Kindergarten Director; Miss Lena Barrette—Teacher of Primary Department; Miss McPherson and Miss Hunt, Assistants.

The enrollment last year:—Kindergarten 48; Transition Class 15; Primary Class 27; Total 90.

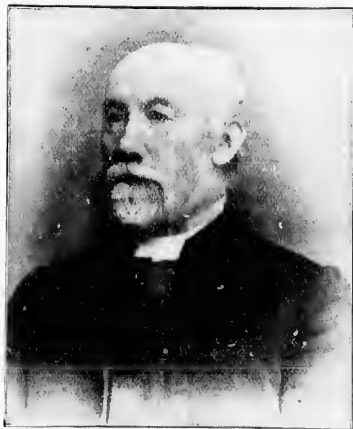
For full information as to courses of study, terms, etc., address the Kindergarten Director, or the Secretary of the Board.



REV. R. W. WALL, B.A.
PRESIDENT N. D. & P. T. CONFERENCE



REV. GEO. F. HILL
SECRETARY N. D. & P. T. CONFERENCE



REV. H. K. RYAN



REV. D. H. HILL



REV. G. M. CAMPBELL
PASTOR



REV. W. L. KELLY



REV. G. H. HILL
SECRETARY N. D. & P. T. CONFERENCE

DIRECTORY

OF THE FIFTEENTH SESSION OF NEW BRUNSWICK AND PRINCE EDWARD ISLAND CONFERENCE OF THE
METHODIST CHURCH, HELD IN FIRST METHODIST CHURCH, CHARLOTTETOWN, P. E. I., COMMENCING
JUNE 22nd, 1898.

CONFERENCE SERVICES.

- Wednesday, June 22, 7.30 p. m. — Sacrament of the Lord's Supper, conducted by the President. Address by Rev. Dr. Stewart.
- Thursday, June 23, 7.30 p. m. — Open Session of Conference in behalf of Missionary Society. Addresses by Revs. G. W. Fisher and S. F. Huestis.
- Friday, June 24, 7.30 p. m. — Open Session of Conference in behalf of Educational Society. Addresses by Revs. S. H. Rice, J. A. Clark, M.A., and H. R. Baker, B.D.
- Saturday, June 25, 7.30 p.m. — Consecration Service, conducted by Rev. Dr. Brecken.
- Sabbath, June 26, 9 a.m. — Conference Loveteast, led by Rev. Dr. Chapman. 11 a.m., Ordination Service. Charge by Rev. R. W. Weddall, B. A., retiring President. 2.30 Sabbath School service. Addresses by Rev. A. D. McCully, B.D., Geo. J. Young and C. W. Strong. 7 p.m. — Rev. G. J. Bond, B.A. 8.20 — Evangelistic Service, conducted by Rev. F. H. W. Pickles.

Monday, June 27, 7.30 p.m. — Open Session in behalf of Sustentation Fund. Addresses by Revs. Hy. Penna, Geo. F. Dawson, M. A., and W. C. Matthews.

Tuesday, June 28, 7.30 p.m. — Temperance Meeting. Addresses by Revs. Wm. Penna and N. McLaughlin, B. A.

Morning Services from 7 to 7.45.

- Wednesday, conducted by Rev. S. A. Bayley.
- Thursday, " " J. B. Gough.
- Friday, " " J. S. Cregg.
- Saturday, " " J. A. Ives.
- Sunday, " " H. D. Marr.
- Monday, " " Hy. Pierce.
- Tuesday, " " W. B. Tennant.



J. A. MOORE
Supt. First Church Sunday School



E. C. F. S. MOORE
Chairman Conference Committee



HENRY SMITH
Secretary Conference Committee



G. H. HAZARD



JAMES PATIS
Asst. Supt. First Church Sunday School



W. W. WELGE
Chairman Church Deputation Committee



A. S. JOHNSON
Chairman Syncon Committee



W. W. STANLEY

CONFERENCE COMMITTEE

SERVICES IN OTHER CHURCHES.

Grace—11 a. m., Rev. R. Wilson, Ph. D. 2.30, Sabbath School Service.
Addresses by Rev. S. H. Rice and G. C. Palmer. 7 p. m.—Rev. Geo.
M. Young.

Heartz Hall, 3 p. m.—Rev. James Crisp.

St. James, (Presbyterian)—11 a. m. Rev. J. Read; 7 p. m., Rev. Thomas
Marshall.

Zion, (Presbyterian) 11 a. m. Rev. W. W. Brewer; 7 p. m., Rev. J. A.
Clark, M. A.

Baptist—11 a. m., Rev. J. Shenton; 7 p. m., Rev. Wm. Penna.

Central Christian Church—11 a. m., Rev. Wm. Wass; 7 p. m., Rev. William
Lawson.

Church of Christ—11 a. m., Rev. C. H. Manaton; 7 p. m., Rev. Jos. Parkins.

Cornwall—11 a. m., Rev. S. H. Rice; 7 p. m., Rev. W. W. Lodge.

North Wiltshire—11 a. m., Rev. W. W. Lodge; 7 p. m., Rev. E. C. Turner.

Kingston—3 p. m., Rev. E. C. Turner.

Little York—11 a. m., Rev. W. H. Spargo; 7 p. m., Rev. S. James.

Union Road—3 p. m., Rev. R. W. J. Clements.

Brackley Point Road—7 p. m. Rev. Thos. Pierce.

Pleasant Grove—3 p. m., Rev. W. H. Spargo.

Stanhope—3 p. m., Rev. S. James.

Black River 10.30 a. m., Rev. E. Bell.

Winsloe South—2.30 p. m., Rev. Harry Harrison; 7 p. m., Rev. J. C. Berrie.

Highfield—11 a. m., Rev. J. C. Berrie; 7 p. m., Rev. Harry Harrison.

Princetown Road—7 p. m., Rev. Geo. A. Sellar.

Winsloe North—11 a. m., Rev. Thomas Stebbings.

Pownal—11 a. m., Rev. Geo. W. Fisher; 7 p. m., Rev. Geo. Steel.

Mount Herbert—2.30 p. m., Rev. J. J. Colter.

Clifton—11 a. m., Rev. J. S. Allen.

Vernon River North—2.30 p. m., Rev. J. S. Allen.

Summerside—a. m. and p. m., Rev. S. Howard, B. D.

Margate—Rev. R. S. Crisp.

Bedeqe—Rev. Wm. Harrison.

R. W. WEDDALL, President.
GEORGE STEEL, Secretary.

G. M. CAMPBELL, } Superintendents of Charlottetown Circuits.
W. J. KIRBY, }

MINISTERS AND THEIR HOMES DURING CONFERENCE

Allison, Dr; F. R. Heartz, Grafton Street.
 Allen, John S.; E. J. Sautner, Weymouth Street.
 Allen, Thomas; I. D. Seaman, Bayfield Street.
 Bayley, D. B., B. A.; J. T. Peardon, Malpeque Road.
 Bayley, S. A.; J. T. Peardon, Malpeque Road.
 Baker, H. R., M. A.; N. Rattenbury, Great George Street.
 Balderston, B. H., B. A.; B. Balderston, Great George Street.
 Bell, A. C., S. T. B.; J. T. Mellish, Great George Street.
 Bell, Edward; G. H. Taylor, Upper Prince Street.
 Berrie, J. C.; G. E. Hughes, Easton Street.
 Brecken, P., D. D.; L. C. Moore, Watermere.
 Bond, G. L., A. B.; B. Heartz, Westbourne.
 Brewer, W. W.; W. F. Carter, Queen Street.
 Campbell, G. M.; Parsonage, Prince Street.
 Champion, Josiah; L. Huestis, Kensington Road.
 Chapman, A. E., B. A.; Miss Stamper, Grafton Street.
 Chipman, D., D. D.; G. A. Sharp, Grafton Street.
 Clarke, I. A., A. M.; John A. Moore.
 Clements, R. W. E.; Richard Heartz, Great George Street.
 Colter, J. J., S. T. B.; Chas Matheson, St. Peter's Road.
 Comben, Charles; Joseph Knight, Hillsboro Street.
 Crisp, James; W. A. Hutcheson, Easton Street.
 Crisp, Robert; W. A. Hutcheson, Easton Street.
 Dawson, George F., B. A.; John Lewis, Grafton Street.
 Dystant, John; Thomas R. Brooks, Prince Street.
 Diebstahl, T. J.; W. S. Stewart, Water Street.
 Ertev, John F.; Artemas Lord, Brighton Road.
 Evans, E., D. D.; Dr. R. Johnson, Kent Street.
 Fisher, G. W.; Phillip Large, Bayfield Street.
 Frizzel, Frank; George Carter, Easton Street.
 Goldsmith, John; R. C. Goff, Fitzroy Street.
 Gough, John B.; Henry Weeks, Rochford Square.
 Gregg, J. S., B. A.; Miss Stamper, Grafton Street.

Hamilton, C. W.; E. Toombs, Great George Street.
 Harrison, F. W.; James Barrett, Dorchester Street.
 Harrison, George; James Barrett, Dorchester Street.
 Harrison, H., B. A.; Rev. G. Campbell, Prince Street.
 Harrison Wm; A. Down, Malpeque Road.
 Hicks, Thomas; Dr. Taylor, Grafton Street.
 Huestis, S. F.; Hon. D. J. Vail, Esplanade.
 Howard, Sannel, B. A.; W. P. Culwill, Malpeque Road.
 Howard, W. J., B. A.; B. Heartz, Westbourne.
 Howie, Isaac; Miss Ellis, Prince Street.
 Janey, J., B. A.; F. R. Heartz, Grafton Street.
 Ives, John A.; W. H. Long, Malpeque Road.
 James, Silas; Wm Large, Hillsboro Street.
 Johnston, W. E., B. A.; Henry Smith, Hillsboro Street.
 King, J. K.; Herbert Love, Fitzroy Street.
 Kirby, W. J.; Parsonage, Upper Prince Street.
 Knight, M. R., A. M.; R. K. Jost, King Street.
 Lawson, Wm; Lemuel Phillips, Hillsboro Street.
 Leard, L. J.; E. Leard, Grafton Street.
 Lodge, D. H.; Residence, Kent Street.
 LePage, A. E.; F. LePage, Fitzroy Street.
 Lodge, W. W.; Lemuel Phillips, Hillsboro Street.
 McConnell, J. W., B. A.; Andrew McNair, Hillsboro Street.
 McCully, A. T., B. D.; R. C. Goff, Fitzroy Street.
 McDonald, L. R.; Mrs. Henry Seller, Kent Street.
 McLaughlin, N., B. A.; Hon. D. Farquharson, Upper Prince Street.
 McLeod, A. D.; Edward H. Norton, Malpeque Road.
 Manaton, C. H.; E. F. Purdy, Malpeque Road.
 Marr, H. D., B. A.; G. E. Full, Upper Prince Street.
 Marshall, Thomas; G. Frank Beer, Prince Street.
 Matthews, W. C.; Mrs. W. L. Wellner, Hillsboro Street.
 Opie, Richard; F. Perkins, Brighton Road.
 Palmer, G. C. P.; Dr. R. Johnson, Kent Street.



"WESTBOURNE" RESIDENCE OF BENJ. HEARTZ, ESQ

Fair
Par
Pay
Pen
Per
Pic
Pie
Pop
Rat
Rea
Ric
Ro
Sel
Sh
Sl
Spr

a H
at
Is
H
R
W

as
re

MINISTERS AND THEIR HOMES DURING CONFERENCE

Faisley, C. H.; M. A.; G. Frank Beer, Prince Street.
Parkin, Joseph; E. Toombs, Great George Street.
Payson, G. B.; J. J. Davies, Hotel Davies.
Peana, Henry; Harry Boswall, Kent Street.
Peana, Wm.; W. C. White, Brighton.
Pepper, W. R.; A. Saline, Grafton Street.
Pickles, F. H. W.; W. C. Turner, Hillsboro Street.
Pierce, Henry, B. V. Thomas Pierce, Great George Street.
Pierce, Thomas; Thomas Pierce, Great George Street.
Pope, Henry, D. D.; Mrs. H. Johnson, Esplanade.
Ramsay, E.; E. F. Purdy, Malpasque Road.
Reid, John; James Paton, Craighlea.
Rice, S. H.; N. Rattenbury, Great George Street.
Ross, George A.; John Ross, Dorchester Street.
Seller, George A.; George Seller, Hillsboro Street.
Shenton, Job; W. E. Dawson, Kilburn.
Slackford, E.; A. Morris, Weymouth Street.
Spargo, W. H.; J. Peter Dickard, Bayfield Street.

Sprague, H., D. D.; Judge Alley, Dorchester Street.
Stebbins, Thomas; Theo Moore, Upper Prince Street.
Steel, George; Mark Wright, Kent Street.
Stewart, Charles, D. D.; A. S. Johnson, Prince Street.
Teasdale, J. J.; G. E. Full, Upper Prince Street.
Tenant, W. B.; James McKee, King Street.
Thomas, H. E.; L. M. Poole, Hillsboro Street.
Thomas, W. B.; W. P. Doull, Kent Street.
Thompson, W. A.; Mrs. George A. Stanley, Grafton Street.
Turner, E. C.; Henry Weeks, Rotebford Square.
Tweedie, Wm.; W. W. Beer, King Square.
Wason, L. J.; George Carter, Easton Street.
Wass, Wm.; Miss Ellis, Prince Street.
Weddall, R. W., A. B.; Dr. Taylor, Grafton Street.
Wightman, F. A.; L. M. Poole, Hillsboro Street.
Wilson, R., Ph. D.; B. Balderston, Great George Street.
Young, J. B.; A. C. Duchemin, Great George Street.
Young, G. M.; Lt. Col. Moore, Watermere.

As the lay members of Conference are elected at the annual district meeting, which is usually held the week preceding Conference, it is impossible to publish a list of their homes. The committee has arranged with the following members and friends of the congregations to provide homes for the lay-men in attendance at Conference:—

Dr. J. S. Bagnall, Henry Balls, Dr. F. D. Beer, F. H. Beer, L. L. Beer, H. R. Boswall, Wm. Boyle, E. R. Brow, John I. Chappell, Rev. G. M. Campbell, Isaac Carter, S. W. Crabbe, C. B. Chappell, H. M. Davison, John Drake, C. P. Fletcher, Robert Fennell, C. C. Gardiner, Von Clur Gay, Mrs. R. B. Huestis, J. P. Hood, A. S. Johnson, Dr. H. D. Johnson, Rev. W. J. Kirby, John A. Lawson, William Large, William Long, John Newson, John McMillan, B. C. Prowse, A. Ritchie, Hon. B. Rogers, Mrs. Henry Seller, Frederick Seller, Geo. Stanley, W. W. Stanley, Arthur Weeks, Major Weeks, W. A. Weeks, W. W. Wellner, G. D. Wright, H. J. Worth, David Wayne, Mrs. R. Young, W. W. Beer.

NOTE: The Souvenir Committee acknowledges with gratitude its indebtedness to Rev. Geo. M. Campbell, pastor of the First Church, for his invaluable assistance in compiling the text of this little book, and for his great interest and untiring efforts which contributed so largely in making the Souvenir a success. To the reverend gentlemen the Committee now tenders its sincere and hearty thanks.



RESIDENCE OF G. A. SHARP, ESQ., SUPT. P. E. I. RAILWAY



"KILBURN" RESIDENCE OF W. E. DAWSON, ESQ.



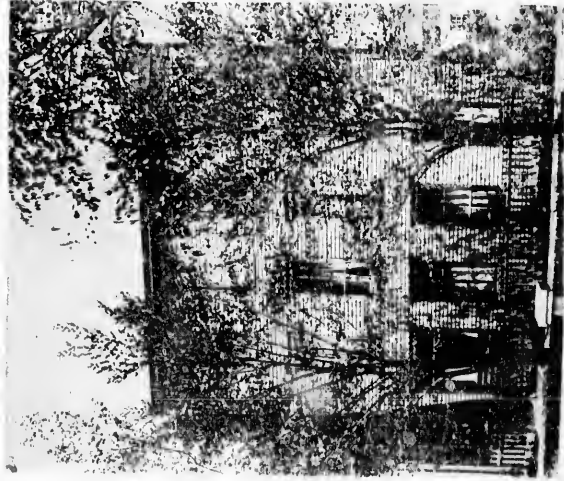
RESIDENCE OF W. A. WEEKS, ESQ



RESIDENCE OF MR. JOHN McMILLAN
Chief Engineer Dominion S.S. Stanley



SOUTH SIDE QUEEN SQUARE



RESIDENCE OF MR. ANDREW MCNAIR,
Chief Engineer U.S. Northern Island



"HAWTHORN VILLA"—RESIDENCE OF Mrs. B. W. Higgs



RESIDENCE OF MAJOR W. A. WEEKS, BRIGHTON



POOLE'S WHARF



" THE CEDARS.
Residence of Mr. Von Clime Gay, of J. J. Gay & Son



RESIDENCE OF MR. W. A. HUTCHESON

Mark Wright & Co. Ltd

FURNITURE

AND

BICYCLES

WHOLESALE AND RETAIL

North Side Queen Square - - Charlottetown

Haszard & Moore : : :



BOOKSELLERS

AND

STATIONERS

Artistic Printing
and
Bookbinding



CHARLOTTETOWN
P. E. I.

A. S. JOHNSON, PH. G.

R. M. JOHNSON, PHM. B.

JOHNSON & JOHNSON

DRUGGISTS

Corner Kent and Prince Streets.

Corner Queen and Richmond Streets

CHARLOTTETOWN, P. E. I.



Amateur Photographers' Supplies.



The dispensing of Physicians' Prescriptions our Specialty.



Ice Cold Soda Water with pure Fruit Juice Flavors.

Victoria Jewelry Store

E. W. TAYLOR

Watchmaker, Jeweler and Optician

CHARLOTTETOWN, P. E. ISLAND

Special attention given to fitting Glasses.

CROWN CONFECTIONERY



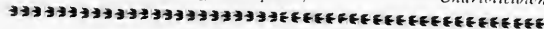
Bon-Bons
Fine Chocolate

W. A. HUTCHESON

MANUFACTURER OF AND
JOBBER IN

Choice Confectionery

North and South Sides Queen Square, - - - - - Charlottetown



GEO. CARTER & CO.

Wholesale and Retail Seedsmen

IMPORTERS AND DEALERS IN

BOOKS, STATIONERY, FANCY GOODS AND WALL PAPERS

SOUVENIR CHINAWARE AND
PHOTOGRAPHS

Charlottetown, - - - - - P. E. I.

G. M. MOORE
S. A. McLEOD

W. A. STEWART
J. P. GORDON

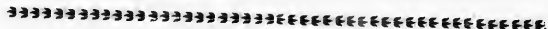
Moore & McLeod

STAPLE AND FANCY DRY GOODS

AND

* * * WALL PAPER * * *

QUEEN STREET, - - - - - CHARLOTTETOWN



ESTABLISHED 1857

DODD & ROGERS

Wholesale and Retail

 **HARDWARE** 

Stoves, Paints, Oils, Glass, etc., etc.

CHARLOTTETOWN, - - - - - P. E. ISLAND



✦ FLOUR AND TEA STORES ✦

BEER & GOFF

IMPORTERS OF

FLOUR, TEA, FRUIT, GENERAL GROCERIES

Queen Square and King Square

CHARLOTTETOWN, P. E. I.

STANLEY BROS.

Dry Goods

Millinery ✦ and ✦ Gentlemen's ✦ Furnishings

BROWN'S BLOCK,

Charlottetown, P. E. Island

CHARLOTTETOWN BOOT FACTORY

GOFF BROTHERS

BOOT MANUFACTURERS

Fine Footwear
Leading Styles
Low Prices



Hand Made
Custom Boots
And Repairing

Charlottetown,

P. E. Island

ESTABLISHED 1863



W. A. Weeks & Co.

WHOLESALE AND RETAIL

Dry Goods Merchants

81 QUEEN STREET

CHARLOTTETOWN, P. E. ISLAND

SIMON W. CRABBE

DEALER IN

Stoves, Register Grates & Hardware

Walker's Brick Building, Cor. Great Geo. & Grafton Sts.

CHARLOTTETOWN, P. E. I.

SAUNDERS & NEWSOM

DEALERS IN
ALL KINDS OF

FRESH AND
SALT

MEATS OF THE BEST
QUALITY

City Market Building, Queen Square, East End, Opp. Post Office

CHARLOTTETOWN, P. E. ISLAND

TELEPHONE 81

W. W. WELLNER

• • •

Watchmaker, Jeweler

& Optician

CHARLOTTETOWN, P. E. ISLAND

Doole & Lewis ; ;

DEALERS IN ALL KINDS OF

L·U·M·B·E·R

LIME, BRICK, & C.

Poole's Wharf - - - Charlottetown, P. E. I.

F. D. BEER, M. D.

Physician and Surgeon;

KING SQUARE

Charlottetown, - - - P. E. Island

OFFICE HOURS:—8 to 10 a. m.; 12 to 3 p. m.; 8 to 10 p. m.



F. P. TAYLOR, F. R. C. S. EDIN.

PHYSICIAN AND
SURGEON

Grafton Street, - - - Charlottetown

OFFICE HOURS:—9 to 10.30 a.m.; 1.30 to 3.30 p.m.

H. D. Johnson, M.D., C.M.

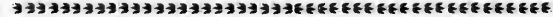


Physician & Surgeon

Special Attention Given to Diseases of
Eye, Ear, Nose and Throat

OFFICE—KENT STREET,
CHARLOTTETOWN.

OFFICE HOURS:—9 to 10.30 a. m.
1 to 3.30 p. m.
6 to 7.30 p. m.



Richard Johnson, M. D.

Physician and Surgeon

Prince Street, Near Kent,
Charlottetown, P. E. I.

OFFICE HOURS:—
9 to 10 a. m.; 2 to 4 p. m.; 7 to 8 p. m.

FIRE

LIFE

ACCIDENT

INSURANCE

E. R. BROW

Charlottetown

OFFICE—BROWN'S BLOCK

DENTISTRY



In all its branches—Crown, Bridge, Plate Work, etc.—is carried on successfully and satisfactorily at Sunnyside Dental Parlors.

*Teeth Extracted Painlessly.
Examination and Advice Free.*

J. H. AYERS

PROWSE BROS.

FOR



CLOTHING, CARPETS

HATS & CAPS

CHARLOTTETOWN,

P. E. ISLAND

*** * G. F. Hutcheson * ***

JEWELER

AND OPTICIAN

Graduate of Philadelphia Optical College

QUEEN STREET

Charlottetown, - - P. E. Island

W. E. DAWSON

IMPORTER OF

✧ HARDWARE ✧

CARRIAGE STOCK

IRON, PAINTS, OILS, VARNISHES, &c.

Corner Kent and Great George Sts. - - Charlottetown

John Newson

VICTORIA ROW

CHARLOTTETOWN

Headquarters for all kinds of FURNITURE

PRICES LOWEST QUALITY BEST

RIDE **“Imperial Wheels”** THE GO-LIGHTLY KIND

*** * W. F. CARTER * ***

CONFECTIONER

Dealer in Pastry, Fruit, Ice Cream, &c.

QUEEN STREET

Charlottetown, - - P. E. Island

We attend the Annual

: : : **Dental Convention**

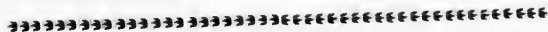
EVERY YEAR

Thereby keeping ourselves learned on all things
new to our profession.

Gerlin Dental Parlor.

OVER STORE PROWSE BROS.

Charlottetown, P. E. I.



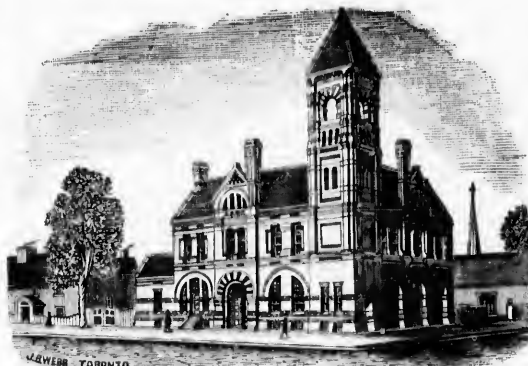
G. H. Taylor † † † †



*Watchmaker, Jeweler
and Silversmith.*

SOUVENIR GOODS

North Side Queen Square, - Charlottetown, P. E. I.



LAURENCE TORONTO

CITY BUILDING

C. B. Chappell

ARCHITECT

Office—Masonic Temple. - - - Charlottetown

✦ ✦ Robert Poombs ✦ ✦

DEALER IN

HARNESS of all kinds.

LIGHT BUGGY HARNESS A SPECIALTY

Charlottetown, - - P. E. Island

BOOTS & SHOES

IN STORE AND
MADE TO ORDER

Any Style from the best Imported Leather
BLACK OR COLORED

 **W. F. Morris**

Prince Street, adjoining K'mergarten Hall.

NELSON BROS.

DEALERS IN

DRY GOODS & GROCERIES

Agents for the Celebrated Star of India
Blend Tea.

Richmond Street, - - Charlottetown, P. E. I.

Bicycles Enameled 

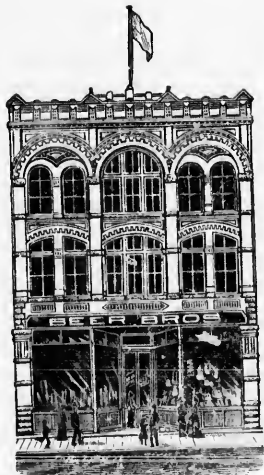
ANY COLOR

(BAKING PROCESS)

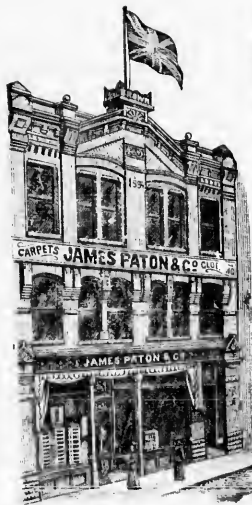
 **H. R. LARGE**

At Large & Son's
Carriage Factory

Upper Great George St., Charlottetown.



GENERAL DRY GOODS
MANTLES & MILLINERY
BEER BROS.



IMPORTERS OF
STAPLE & FANCY DRY GOODS

Pierce & Co. : : :

General Grocers
AND SEEDSMEN

Corner Queen & Fitzroy Streets

Charlottetown, P. E. I.

PHOENIX FIRE INSURANCE COMPANY, OF HARTFORD, CONN.
CONFEDERATION LIFE ASSOCIATION.
ONTARIO ACCIDENT INSURANCE COMPANY.
DOMINION STEAMSHIP COMPANY.

INSURE YOUR PROPERTY IN THE PHOENIX
YOUR LIFE IN THE CONFEDERATION
TAKE OUT AN ONTARIO ACCIDENT POLICY
THEN PURCHASE A TICKET TO EUROPE
BY DOMINION LINE STEAMERS.
ALL THESE GOOD THINGS CAN BE HAD FROM

E. H. BEER

General Insurance Agent
Accountant & Auditor

Charlottetown, P. E. Island

Pownal Wharf Coal Depot



AUGUSTUS DOWN

DEALER IN
ALL KINDS OF

**Hard &
Soft Coal**

Charlottetown, - - P. E. Island

City Foundry and Machine Shop

A. WHITE & SON

Manufacturers of and Dealers in

Mowing & Reaping Machines, Rotary Harrows, Plows, &c.

Repairing Promptly Attended To.

King Square, - - Charlottetown, P. E. I.

Stentiford & Taylor

Painters and Decorators

HOUSE PAINTING, TINTING, CALCIMING, PAPER
HANGING, &c., PROMPTLY ATTENDED TO AT REASONABLE
PRICES.

HILLSBOROUGH STREET, - - CHARLOTTETOWN

J. J. PROWSE

GAS FITTER
Sheet Iron and Tin Plate Worker

WATER WORKS PLUMBER

KENT STREET, - - CHARLOTTETOWN

The Federal Life Assurance Company

HEAD OFFICE HAMILTON, ONT.

Capital and Assets over \$1,350,458.00

"Special Policies sold to Clergymen."

All classes of Assurance sold. Lowest Rates.

D. DEXTER,
Managing Director.

J. K. McCUTCHEON,
Supt. of Agencies

S. M. KENNEY,
Secretary.

EDWARD H. NORTON,
Manager for P. E. I.

CHARLOTTETOWN, P. E. I.

J. R. DAVISON

 Undertaker

OPPOSITE BAPTIST CHURCH

Charlottetown - - P. E. Island

E. B. LOVE

Kensington Tannery

E. G. LOVE

St. Peter's Road, - - - Charlottetown, P. E. I.

E. B. LOVE & SON

MANUFACTURERS OF

Satin and Pebble Grain, Wax and Grain Upper,
Splits, Harness Leather, etc.

 Highest Cash Price Paid for Hides, Bark, &c. 

JOHN H. BELL

DEALER IN

BOOTS, SHOES AND RUBBERS

Sole Leather, Shoe Findings, &c.

Custom Work and Repairing a Specialty.

Upper Great George Street, - - Charlottetown, P. E. I.

❧ JAMES BARRETT ❧

GENERAL DEALER IN

Lumber & Coal

CONNOLLY'S WHARF

Charlottetown. - - - P. E. Island

J. S. BAGNALL, D. D. S.

— DENTIST —

SPECIALS—Crown and Bridge Work, and Nitrous Oxide
or Laughing Gas.

Cor. Queen & Richmond Sts.

Charlottetown, P. E. Island

* * * W. P. DOULL * * *

ELECTRICIAN



Bicycle Re-enameling



AND REPAIRING IN ALL ITS BRANCHES

== CHEAPEST AND BEST ==

BEFORE TAKING

KENT STREET

AFTER TAKING

Near Johnson & Johnson's Uptown Store,

CHARLOTTETOWN

CHARLOTTETOWN ROLLER MILLS

CHOICE BRANDS OF

FAMILY FLOUR

CORNMEAL AND ROLLED OATS

GEO. E FULL,

Lower Prince Street.

PROPRIETOR

IF YOU WANT **HARNESS** ❖ ❖

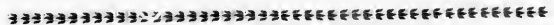
→ GO TO →

WM. H. LONG

UPPER GREAT GEORGE STREET

Charlottetown, P. E. I.

Where You can Get the Best Goods at the
Lowest Price



GEO. W. GARDINER,
Steam Printer and Publisher,
QUEEN STREET,
Charlottetown, P. E. Island.

All kinds of Printing in the Best Style
at Low Prices.

BRIGHT

TRY US FOR

BREAD, CAKE AND PASTRY

ALSO

Fruits, Confections, Groceries

QUALITY FIRST-CLASS PRICES LOW

TELEPHONE

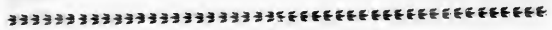
W. PICKARD & CO.

Cor. Gt. Geo. and Euston St.

Successors to L. C. Worthy.

AND

GROCERY



Ward 5 Daily Meat Market.

E. WHEATLEY

Wholesale and Retail Dealer in

BEEF AND PORK, SHOULDERS & BREAKFAST BACON

Curer of Extra Family Hams. PURE LEAF LARD.

Charlottetown, - - - P. E. Island

THOS. PICKARD

Buggy & Tops & and & Carriages

TRIMMED TO ORDER

===== EUSTON STREET =====

CHARLOTTETOWN, - - P. E. ISLAND

Geo. Rackham 



*GROCERIES, FRUITS
AND PROVISIONS*

Corner Prince and Kent Streets,
Charlottetown, P. E. I.

Ministers and Laymen

A good SHAVE is essential to deliberations on matters temporal and otherwise.

Personal Appearance

should be in keeping with a man's profession.
While attending Conference call and get a good shave and a fashionable hair-cut.

 **F. RIGGS**

The Fashionable Barber

Queen Street, Charlottetown.

 **W. NEEDHAM** 

DEALER IN ALL KINDS OF

    **STOVES**

Pownal Street, - - Charlottetown

Grafton Street Tannery

Four doors East of Kindergarten Hall

CHARLOTTETOWN, - - - P. E. I.

Calf, Sheepskins, Neats, Grain and Harness Leather kept in stock.

Raw materials purchased.

 **JOHN L. GODKIN**
PROPRIETOR

~~~~~  
G. H. HOLBROOK



General Insurance Agent

CHARLOTTETOWN, P. E. I.

REPRESENTING

The Ontario Mutual Life, and  
The Manufacturers' Guarantee and Accident Co's.

## Lewis's Photographs

For fineness of finish and artistic posing  
Lewis's photos are unsurpassed anywhere.  
Special attention given to

### CHILDREN'S PICTURES

Also to copying and enlarging old pictures.  
All kinds of pictures framed to order.  
Don't forget the place.

 **C. LEWIS**

Opposite Post Office, Charlottetown.

~~~~~  
If You Want Your

Horse Shod

GO TO

PARSONS' FORGE

HILLSBORO STREET
NEAR GRAFTON

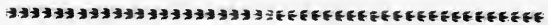
CHARLOTTETOWN, P. E. ISLAND

✦ GEO. COOMBS ✦

Ship Owner 

Commission Merchant

Water Street, Charlottetown.



FINE PAINTING AND DECORATING

House and Sign Painting
Hardwood Floors Polished
Staining of all kinds done
Paper Hanging, etc., etc.
Church Painting a Specialty

A. L. HOWATT

SCHOOL STREET

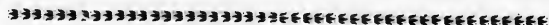
CHARLOTTETOWN, P. E. ISLAND

Charlottetown ✦ Carriage ✦ Factory

• **LARGE & SON** •

Upper Great George Street

Charlottetown, P. E. Island



GEO. WHEATLEY

Wholesale and Retail Dealer in
BEEF and PORK.

Curers of Extra Family Hams, Shoulders and Breakfast Bacon.
PURE LEAF LARD.

Produce Bought and Sold.

CHARLOTTETOWN, - - - P. E. ISLAND

17

✦ ✦ **Music Studio** ✦ ✦

OFFERS BUILDING, QUEEN STREET

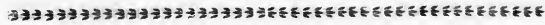
Piano, Organ, Voice Culture and Singing

BEGINNERS A SPECIALTY


Intends teaching one or two days in the week during the summer months.

Agent for the Newcombe Piano—the Steinway of Canada

 **S. N. EARLE**
Organist First Methodist Church



 **J. T. MELLISH** 

 Barrister, Solicitor, &c.

Charlottetown, P. E. Island.


A. J. B. MELLISH

Barrister, &c.

Souris, - - - P. E. Island

C. B. MURLEY

B. J. L. GARNHUM

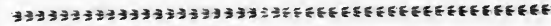
JOHN COOMBS & CO

Respectfully wish the N B and P. E. I Conference a very pleasant session; and will be pleased to meet the visiting pastors at their place of business at any time.

All kinds of PRINTING and BOOKBINDING at prices that will suit everybody, and at short notice.

 *John Coombs & Co.*
Steam Printers and Bookbinders

Lower Queen Street, Charlottetown.



G. H. COOK



Artistic Photographer


Panel and Cabinet Photos

Children's Photos a Specialty

COPYING AND ENLARGING FROM OLD PICTURES

WILL BE CAREFULLY ATTENDED TO

Corner Queen and Grafton Sts. - - - Charlottetown

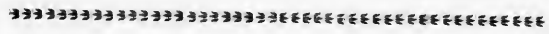
SMALL'S TIN SHOP
MILNERS' OLD STAND  GREAT GEORGE ST.

CHARLOTTETOWN, P. E. I.

ROBERT B. SMALL

Water Works Plumber

BELL HANGER, GAS FITTER, SHEET
IRON & TIN PLATE WORKER



James Vatcher

CONFECTIONER and JOBBER

Dealer in Oysters 

Catering for Teas, Picnics, &c, a Specialty

JAMES VATCHER

QUEEN STREET, CHARLOTTETOWN

The People's Cash Store

IS THE PLACE TO BUY YOUR

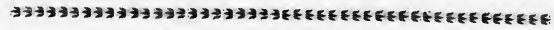
GROCERIES, SEEDS, &c.

We buy for cash and sell for cash. You can save money by dealing with us


We pay Cash for all kinds of Country Produce.

JNO. WHEATLEY

Upper Great Geo. St, Charlottetown.



JOHN HARPER

 Builder and Contractor

AND GENERAL ROOFER



Residence—Fitzroy Street-East

CHARLOTTETOWN, P. E. ISLAND

J. A. MATHIESON, GEORGETOWN

W. E. BENTLEY, CHARLOTTETOWN

Mathieson & Bentley

Barriers, Attorneys
& Solicitors

OFFICES { Cameron Block, Charlottetown
Main Street, Georgetown

PRINCE EDWARD ISLAND
CANADA

J. A. MACDONALD

G. S. INMAN

Macdonald & Inman

Barriers, Attorneys, Solicitors
Notaries Public, &c.

CHARLOTTETOWN,
P. E. ISLAND

OFFICES:

CAMERON BLOCK, VICTORIA ROW

PATRONIZE



Hughes The People's
Druggist

FOR

Drugs, Medicines, Toilet Requisites, &c.

*Special Discount to Clergymen
and others attending Conference.*

George E. Hughes

Charlottetown, P. E. Island.

Apothecaries Hall.

W. N. Tanton

Watches, Clocks, Jewelry, &c.

Our Specialty—Fine Watch, Clock and Jewelry Repairing
in all its branches, at reasonable prices.

Great George Street.

CHARLOTTETOWN, - - - P. E. ISLAND

J. J. GAY & SON

.. NURSERY GARDENS ..

Market House & Head of Prince Street, Charlottetown, P. E. I.

High Grade Tested Seeds the same as they plant so largely themselves. Choice Vegetable and Bedding Flowering Plants a specialty, in their season.

Mailed to any address in the lower provinces.

Telephone.)

33 J. W. PEARSON 33

WHOLESALE GROGER

CHARLOTTETOWN, : : : P. E. ISLAND

Tobacco, Cigars and Lime

HENRY BALLS

Wholesale and Retail Dealer in

FRESH AND SALT MEATS

OF THE BEST QUALITY

Choice Bacon and Hams

Upper Queen Street and Market Stall, - - Charlottetown, P. E. I.

Edmund Toombs, Jr.

DEALER IN

Flour, Meal, Molasses, Tea, Fish, Etc., Etc.

CROCKERYWARE AND GLASSWARE

Upper Great George Street

CHARLOTTETOWN, - - - P. E. I.

W. P. COLWILL

IMPORTER AND DEALER IN

Glass, China, Earthenware, General Groceries

QUEEN STREET

Charlottetown, - - P. E. Island

C. D. Fletcher's



Piano Warerooms

OPERA HOUSE BUILDING

Charlottetown, P. E. I.

A. DUCHEMIN & CO.

MANUFACTURERS OF

Doors, Sash, Building Trimmings, Mouldings, Etc.

Cor Great George and Water Streets

CHARLOTTETOWN, P. E. ISLAND

W. C. Whitlock



DEALER IN

Pictures, Frames & Mouldings

WHOLESALE AND RETAIL

Umbrellas Repaired

240 QUEEN STREET

Charlottetown, - - P. E. Island

Worth's Livery Stables

PRINCE STREET
Charlottetown, - P. E. Island

TELEPHONE COMMUNICATION

POPULAR SHOE STORE . .

WEEKS & WARREN

IF YOU need anything in Shoes, it will be to your advantage to call and examine our stock of

FOOTWEAR

Out of consideration for your feet as well as for your pocket, turn your steps this way and save money. All the latest styles and newest designs in Ladies' fine Oxford Shoes, turn soles, patent tip at rock bottom prices.

WEEKS & WARREN
NORTH SIDE MARKET SQUARE.

H. GORDON

DEALER IN

FANCY GROCERIES & PROVISIONS

TEA, FRUIT, FLOUR, MEAL, PORK, FISH,
CHOICE SUGAR CURED HAMS & BACON

Goods Promptly Delivered.

Corner of Prince & Dorchester Streets
Charlottetown, - P. E. Island

L. P. TANTON

Choice Groceries and Provisions

Wholesale Dealer in

EGGS, BUTTER, OYSTERS, HYDES, &c
CORNER GT. GEORGE & KENT STS.

Charlottetown - - P. E. Island

F. Perkins & Co.

IMPORTERS OF

GENERAL AND FANCY DRY GOODS
FINE MILLINERY &c.

—SUNNYSIDE—

Charlottetown, - - - P. E. Island

~~~~~  
*J. D. TAYLOR*

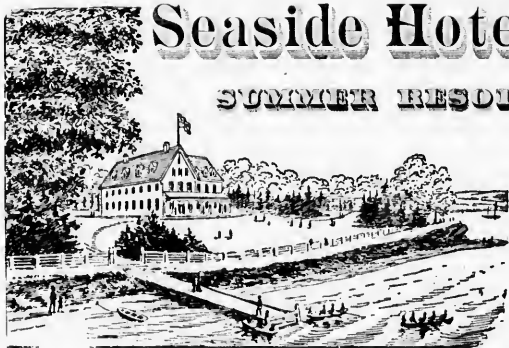
— Bookbinder

Book and Job Printery

*Queen St., Charlottetown, P. E. I.*

My work goes all over the Province.

24



**Seaside Hotel**

**SUMMER RESORT**

**Rustico Beach, P. E. I.**

Will be opened about JULY 1st.

**ADDRESS—John Newson,**

**Charlottetown.**

# UNIVERSITY OF MOUNT ALLISON COLLEGE

SACKVILLE, N. B.

DAVID ALLISON, LL. D., : : : President

The University, with its associate institutions, the Ladies' College and the Mount Allison Academy, constitutes one of the most extensive and symmetrical educational establishments in the Dominion. Students are admitted without distinction of sex for either the full Arts Course or Selected Special Courses. Young ladies enrolled as University students find an elegant domestic home in the Ladies' College, in close proximity to the University class-rooms. The New University Residence is replete with every comfort and convenience. The first term of the Collegiate Year, '98-'9, begins September 22nd. For full information as to course of study, terms, scholarship, prizes, degrees, etc., address the president for a Calendar.

## MOUNT ALLISON LADIES COLLEGE

OWEN'S ART INSTITUTION AND CONSERVATORY  
OF MUSIC

Sackville, N. B., - - Rev. B. C. Borden, D. D, Principal

Forty years of progressive educational work has given this institution an unrivalled position in the public confidence. Instruction is imparted on subjects ranging from the Primary English branches through the whole University Curriculum. Young ladies studying for the teaching profession may here combine the accomplishments with the thorough drill necessary to their calling.

THE CONSERVATORY OF MUSIC employs six teachers, all eminent in their profession, all of whom have received their musical education in Europe. Courses in Piano, Vocal Culture, Pipe Organ, Violin, Musical History, Harmony, etc., are provided.

THE OWEN'S ART INSTITUTION, lately transferred from St. John, furnishes the opportunities of an Art Education unequalled in Canada. Pupils may here enjoy the tuition of one of the leading artists of America, as well as the educative influences afforded by the paintings of the noted artists found in the Gallery.

Shorthand and Type-writing are also taught. Special attention is given to the cultivation of refined tastes and lady-like manners. Apply to Principal for Catalogues. Fall term begins first Thursday in September.

Mount Allison Wesleyan Academy and Commercial College,

JAMES M. PALMER, M. A. - - - - - PRINCIPAL

This is one of the oldest and best schools for boys in the Dominion. The courses comprise:—1st. General Elementary Education, and Preparation for Matriculation. 3rd. A Full Business Course. Students will find here good social and moral influences, thorough education and a comfortable home. Terms moderate. Write for Calendar. Young ladies are admitted to the Commercial Department. These may reside at the Ladies' College. Academic year, 1897-'8, begins September 1st, '98.

# Methodist Book-Room

—AND—

## Wesleyan Office

141 Granville Street, Halifax, Nova Scotia.

### Methodist Hymn Books

in all the styles and prices, including Hymn Book and Bible combined.

### Bibles

for the Pulpit, Family and S. S. Teacher: Oxford International, etc. All styles and prices.

### Music Books

Methodist Hymn and Tune Book, Excells Anthems, Gospel Hymns, Canadian Hymnal, etc.

### Sunday School Libraries

The best books of the best Publishers are kept in stock. Canadian Copyright Books. Most Liberal discount to Sunday Schools.

**Theological and Miscellaneous Books and General Literature.**

### STATIONERY

Note Paper, Envelopes, Papetries, etc., etc.

“THE WESLEYAN”

Published Week y. at \$1.00 per year. Rev. Geo. J. Bond, B. A., Editor.

☞ Samples of Books may be seen at the Conference Church, Charlottetown.

S. F. HUESTIS,  
Book Steward.

Sole Agents for the  
: : : **SLATER SHOE**

MADE IN MANY SHAPES AND WIDTHS  
TO SUIT ALL MEN, AT

**\$3.00, \$4.00 & \$5.00** A PAIR

**ALLEY & CO.**

CHARLOTTETOWN, P. E. ISLAND

~~~~~  
E. F. PURDY . . .

**MARBLE, GRANITE
AND FREE STONE CUTTER**

:: 280 ::

KENT STREET, CHARLOTTETOWN

A variety of Monuments in Scotch and St. George Granite,
Brandon, Italian and Butland.
All work as ordered at lowest prices.



D. E. J. Commercial College

ISAAC OXENHAM, Principal and Proprietor

BOOK-KEEPING in all its Branches taught
in connection with Actual Business.

Shorthand and Typewriting,
Arithmetic, Penmanship,
Commercial Law, Business
Correspondence

Re-opens after summer holidays on

15th AUGUST, 1898

PARKMAN & CRABBE

Carpenters, Contractors and Builders

Estimates given for all kinds of Wood Work.
Contracts undertaken for erectior. of Stone, Brick, or Wooden Buildings.

All Work Under Direct Personal Supervision.

EUSTON STREET - - - CHARLOTTETOWN



CHARLES SMALLWOOD

Horseshoeing and Jobbing

RICHMOND STREET

Charlottetown, P. E. Island

N. RATTENBURY

WHOLESALE

Grocer and Produce Exporter

CHARLOTTETOWN, P. E. I.

AGENT

DOBELL LINE STEAMERS, BEAVER LINE STEAMERS,
BEAVER FLOUR, ROWLEY & DAVIES, TEA MERCHANTS,
LONDON, ENG.



† William Brehaut †

*Lathing and Plastering,
Whitewashing and Calcimining.*

GRAFTON STREET

Charlottetown, - - - P. E. I.



WEELEY MEMORIAL

Worcester Abbey



