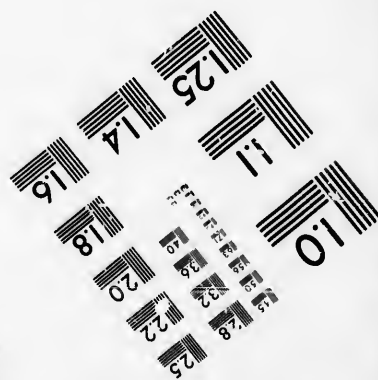
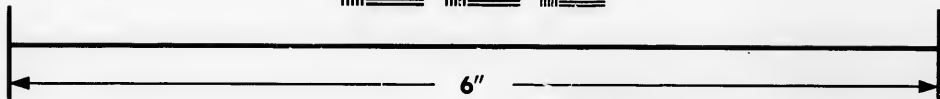
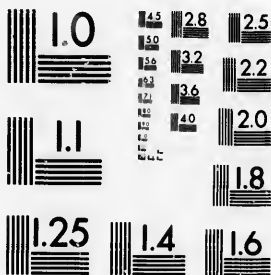


**IMAGE EVALUATION
TEST TARGET (MT-3)**



**Photographic
Sciences
Corporation**

23 WEST MAIN STREET
WEBSTER, N.Y. 14580
(716) 872-4503

28
25
22
20
18

**CIHM/ICMH
Microfiche
Series.**

**CIHM/ICMH
Collection de
microfiches.**



Canadian Institute for Historical Microreproductions / Institut canadien de microreproductions historiques

10
57

© 1985

Technical and Bibliographic Notes/Notes techniques et bibliographiques

The Institute has attempted to obtain the best original copy available for filming. Features of this copy which may be bibliographically unique, which may alter any of the images in the reproduction, or which may significantly change the usual method of filming, are checked below.

L'Institut a microfilmé le meilleur exemplaire qu'il lui a été possible de se procurer. Les détails de cet exemplaire qui sont peut-être uniques du point de vue bibliographique, qui peuvent modifier une image reproduite, ou qui peuvent exiger une modification dans la méthode normale de filmage sont indiqués ci-dessous.

- | | |
|--|--|
| <input type="checkbox"/> Coloured covers/
Couverture de couleur | <input type="checkbox"/> Coloured pages/
Pages de couleur |
| <input type="checkbox"/> Covers damaged/
Couverture endommagée | <input type="checkbox"/> Pages damaged/
Pages endommagées |
| <input type="checkbox"/> Covers restored and/or laminated/
Couverture restaurée et/ou pelliculée | <input type="checkbox"/> Pages restored and/or laminated/
Pages restaurées et/ou pelliculées |
| <input type="checkbox"/> Cover title missing/
Le titre de couverture manque | <input checked="" type="checkbox"/> Pages discoloured, stained or foxed/
Pages décolorées, tachetées ou piquées |
| <input type="checkbox"/> Coloured maps/
Cartes géographiques en couleur | <input type="checkbox"/> Pages detached/
Pages détachées |
| <input checked="" type="checkbox"/> Coloured ink (i.e. other than blue or black)/
Encre de couleur (i.e. autre que bleue ou noire) | <input checked="" type="checkbox"/> Showthrough/
Transparence |
| <input type="checkbox"/> Coloured plates and/or illustrations/
Planches et/ou illustrations en couleur | <input type="checkbox"/> Quality of print varies/
Qualité inégale de l'impression |
| <input type="checkbox"/> Bound with other material/
Relié avec d'autres documents | <input type="checkbox"/> Includes supplementary material/
Comprend du matériel supplémentaire |
| <input type="checkbox"/> Tight binding may cause shadows or distortion
along interior margin/
La reliure serrée peut causer de l'ombre ou de la
distorsion le long de la marge intérieure | <input type="checkbox"/> Only edition available/
Seule édition disponible |
| <input type="checkbox"/> Blank leaves added during restoration may
appear within the text. Whenever possible, these
have been omitted from filming/
Il se peut que certaines pages blanches ajoutées
lors d'une restauration apparaissent dans le texte,
mais, lorsque cela était possible, ces pages n'ont
pas été filmées. | <input type="checkbox"/> Pages wholly or partially obscured by errata
slips, tissues, etc., have been refilmed to
ensure the best possible image/
Les pages totalement ou partiellement
obscurcies par un feuillet d'errata, une pelure,
etc., ont été filmées à nouveau de façon à
obtenir la meilleure image possible. |
| <input type="checkbox"/> Additional comments: / [Printed ephemera] [4] p.
Commentaires supplémentaires: | |

This item is filmed at the reduction ratio checked below/
Ce document est filmé au taux de réduction indiqué ci-dessous.

10X	14X	18X	22X	26X	30X
<input type="checkbox"/>	<input type="checkbox"/>	<input checked="" type="checkbox"/>	<input type="checkbox"/>	<input type="checkbox"/>	<input type="checkbox"/>
12X	16X	20X	24X	28X	32X

The copy filmed here has been reproduced thanks to the generosity of:

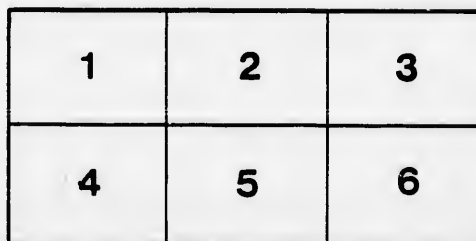
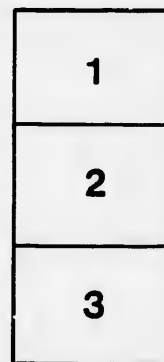
D. B. Weldon Library
University of Western Ontario
(Regional History Room)

The images appearing here are the best quality possible considering the condition and legibility of the original copy and in keeping with the filming contract specifications.

Original copies in printed paper covers are filmed beginning with the front cover and ending on the last page with a printed or illustrated impression, or the back cover when appropriate. All other original copies are filmed beginning on the first page with a printed or illustrated impression, and ending on the last page with a printed or illustrated impression.

The last recorded frame on each microfiche shall contain the symbol \rightarrow (meaning "CONTINUED"), or the symbol ∇ (meaning "END"), whichever applies.

Maps, plates, charts, etc., may be filmed at different reduction ratios. Those too large to be entirely included in one exposure are filmed beginning in the upper left hand corner, left to right and top to bottom, as many frames as required. The following diagrams illustrate the method:



L'exemplaire filmé fut reproduit grâce à la générosité de:

D. B. Weldon Library
University of Western Ontario
(Regional History Room)

Les images suivantes ont été reproduites avec le plus grand soin, compte tenu de la condition et de la netteté de l'exemplaire filmé, et en conformité avec les conditions du contrat de filmage.

Les exemplaires originaux dont la couverture en papier est imprimée sont filmés en commençant par le premier plat et en terminant soit par la dernière page qui comporte une empreinte d'impression ou d'illustration, soit par le second plat, selon le cas. Tous les autres exemplaires originaux sont filmés en commençant par la première page qui comporte une empreinte d'impression ou d'illustration et en terminant par la dernière page qui comporte une telle empreinte.

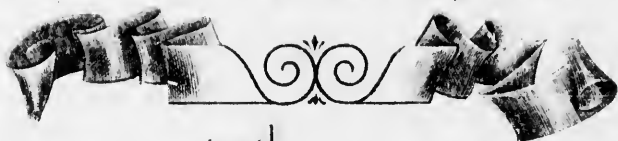
Un des symboles suivants apparaîtra sur la dernière image de chaque microfiche, selon le cas: le symbole \rightarrow signifie "A SUIVRE", le symbole ∇ signifie "FIN".

Les cartes, planches, tableaux, etc., peuvent être filmés à des taux de réduction différents. Lorsque le document est trop grand pour être reproduit en un seul cliché, il est filmé à partir de l'angle supérieur gauche, de gauche à droite, et de haut en bas, en prenant le nombre d'images nécessaire. Les diagrammes suivants illustrent la méthode.

rrata
to
pelure,
n à

Advice of
OCEAN QUOTATIONS

FROM MONTREAL.



Presented
with the Compliments of
THE

**GRAND
TRUNK
RAILWAY
SYSTEM**



CHAS M. HAYS.
General Manager.

GEO. B. REEVE.
Genl. Traffic Manager.

JNO W. LOUD.
Genl. Freight Agent.

A. F. READ.
Foreign Freight Agent.
MONTREAL.
QUE.

THE GREAT CANADIAN
HIGHWAY TO EUROPE.

Subject to Change Without Notice.

Weekly Advice of Current Ocean Rates and Intended Sailing

(B.—2500.)

DESCRIPTION.		Liver- pool	Glas- gow	London	Bristol	Belfast	Leith
Flour, Oilcake, Starch, Sugar, Split Peas & Oatmeal, in bags.....	240 lbs.	12/6	13/9	16/3	15/	16/3	17/
Flake Oatmeal, Rolled Oats, Middlings.....	"	20/	20/	22/	22/6	20/	22/
Lard, Beef, Pork, Tallow and Oleo in barrels or tierces.....	"	20/	22/6	22/6	25/	22/6	22/
Lard in pails and other small packages.....	"	25/	27/6	27/6	30/	27/6	27/
Bacon and Boxed Meats, Canned Meats and Goods	"	20/	22/6	22/6	25/	22/6	22/
Glucose and Syrup in barrels.....	"					27/6	
Cheese, in boxes.....	"	25/	25/	25/	30/	27/6	25/
Butter, in cases and kegs.....	"	30/	30/	30/	35/	32/6	30/
Seeds, timothy and clover, in bags.....	"	17/6	20/	22/6	25/	20/	25/
" blue and other grass, in bags.....	"	35/	40/	40/	40/	40/	40/
Leather, black and other, in heavy bales and cases	"	22/6	25/	25/	27/6	27/6	25/
" rough sole, and split, in rolls and bales..	"	35/	40/	40/	40/	40/	40/
Pot and Pearl Ash, No. 1 Asbestos, and Mica.....	"	13/9	15/	17/6	17/6	17/6	17/
Maple and Elm Blocks and Squares.....	"	12/6	13/9	15/	16/3	17/6	20/
Heavy Lumber—Oak, Elm, Birch, (chair stock, &c.) & Maple.....	"	20/	20/	20/	22/6	20/	
Weight (coarse).....	"	12/6	13/9	15/	15/	15/	17/
Radiators and similar Castings.....	"	12/6	13/9	15/	15/	15/	17/
Scrap Iron or Steel.....	"						
Seed Peas and Beans, in shipper's bags.....	"	13/9	15/	17/6	18/9	15/	17/
Measurement, (coarse), see list on margin.....	40 cubic ft.	12/6	13/9	15/	15/	15/	17/
" (fine) " ".....	"	20/	20/	20/	20/	20/	25/
Woodenware, &c., see list on margin.....	"	12/6	13/9	15/	17/6	15/	17/
Furniture, &c., " ".....	"	12/6	13/9	15/	17/6	15/	17/
Implements, &c., " ".....	"	12/6	13/9	15/	17/6	15/	17/
Eggs, in cases or barrels.....	"	15/	17/6	17/6	17/6		17/
Poultry, in cases or barrels.....	"						
Apples, Flour,.....	Barrel	3/	3/	3/	3/	3/	3/
" and other Fruit, in boxes.....	40 cubic ft.	15/	15/	15/	17/6		17/
Smalls, of less than 1/8 ton weight or measurement	each	10/	10/	10/	10/	15/	10/
Grain, in shipper's bags.....	Quarter	3/	3/	3/3	3/6	2/9	

These rates are for general information only, and are subject to change at a CONTRACTS MUST BE REPORTED BY WIRE AND CONFIRMATION OBTAINED BEFORE TO BE PROMPT SHIPMENT, OR SHIPPED WITHIN TEN DAYS AFTER DATE OF C

The above rates are exchanged on basis of \$4.80 to £1 stg., excepting that w rate must be collected on basis of \$4.86 to the pound sterling.

If freight is offered other than specified above, on which Steamship connect their option, prompt replies will be facilitated by giving, when applying for rate,

It is understood that when reporting Sack Flour engagements, a carload is c It is also important that Shipper's name be given for every engagement ma

RAILWAY SYSTEM.

SEIGN FREIGHT AGENTS' OFFICE,

MONTREAL.

No Primage via Montreal.

and Intended Sailings, Week Ending May 5th, 1900.

Reg. 97-900.

London	Bristol	Belfast	Leith	Aberdeen	Dublin	Manchester	Cardiff	Hamburg	Antwerp	WOODENWARE:—
16/3	15/	16/3	17/6	20/	18/9	14/	15/	18c	15/	Brooms and Whisks. Cooperage Stock. Doors, mouldings and joiner's work Handles and Poles. Wood Rims, pulleys and blocks.
22/	22/6	20/	22/	25/	22/6	20/	18/9	24c	18/9	FURNITURE:—
22/6	25/	22/6	22/6	25/	25/	20/	25/	24c	20/	Furniture in rough and in white. Mattresses. Organs. Refrigerators. School Furniture, desks, seats, &c.
27/6	30/	27/6	27/6	30/	30/	25/	30/	27c	25/	IMPLEMENTS.—
22/6	25/	22/6	22/6	25/	25/	20/	25/	24c	20/	Agricultural Implements. Agricultural machinery of not over 2 tons per piece or package. Cultivators in cases. Lawn Mowers. Plow castings, beams and repairs. Sewing Machines. Vehicles—materials and parts. Windmills. Washing Machines. Wringers and Stands. Woodworking machinery.
25/	30/	27/6	25/	30/	30/	27/6	30/	40c	25/	MEASUREMENT (COARSE):—
30/	35/	32/6	30/	35/	35/	32/6	35/	40c	30/	Animal Heads, &c. Bicycles, &c. Canoes and Boats. Harness. Shoes and Boots. Skewers Emery Stone in pkgs. Breakfast Foods.
22/6	25/	20/	25/	25/	22/6	20/	25/	24c	22/6	MEASUREMENT (FINE):—
40/	40/	40/	40/	40/	45/	37/6	40/	40c	35/	Books and Pictures. Pianos and Stools, Wearing Apparel. Dry Goods, Cottons, &c. Skins in Bales. Household Effects.
25/	27/6	27/6	25/	25/	30/	25/	27/5	40c	22/6	GRAIN IN SHIPPERS BAGS:—
40/	40/	40/	40/	40/	45/	40/	40/	45c	35/	Oats per 320 lbs. ; Barley, Buckwheat and Flax- seed per 400 lbs. ; Maize, Wheat, Rye and Peas per 480 lbs.
17/6	17/6	17/6	17/6	20/	20/	15/	17/6	18c	15/	
15/	16/3	17/6	20/	20/	18/9	13/9	16/3	18c	15/	
20/	22/6	20/			22/6	20/	22/6	22c	20/	
15/	15/	15/	17/6	20/	17/6	13/9	15/	18c	15/	
15/	15/	15/	17/6	20/	17/6	13/9	15/	18c	15/	
17/6	18/9	15/	17/6	20/	17/6	15/	18/9	18c	15/	
15/	15/	15/	17/6	20/	17/6	12/6	15/	17/6	13/9	
20/	20/	20/	25/	30/	25/	20/	20/	20/	20/	
15/	17/6	15/	17/6	20/	17/6	12/6	17/6	17/6	13/9	
15/	17/6	15/	17/6	20/	17/6	12/6	17/6	17/6	13/9	
15/	17/6	15/	17/6	20/	17/6	12/6	17/6	17/6	13/9	
17/6	17/6		17/6	20/		15/	17/6	20/	15/	
3/	3/	3/	3/	3/6	3/6	3/	3/	3/6	3/	
15/	17/6		17/6	20/	15/	15/	15/	18c	15/	
10/	10/	15/	10/	10/		10/	10/	15/	10/	
3/3	3/6	2/9			3/	3/	3/3	3/6	3/	

and are subject to change at any time without notice; it is therefore important that ALL INFORMATION OBTAINED BEFORE CLOSING WITH SHIPPERS, AND UNLESS SPECIFICALLY STATED DAYS AFTER DATE OF CONTRACT FROM THE WEST.

to £ 1 stg., excepting that when freight is prepaid, the ocean proportion of the through sterling.

on which Steamship connections are accustomed to quote a weight or measurement rate at time, when applying for rate, the relative weight and measurement of the merchandise.

engagements, a carload is considered 28,000 lbs. for every engagement made.

SAILINGS FROM MONTREAL.

TO LIVERPOOL.

VANCOUVER (Cold Storage)	DOMINION LINE	May	1
LAKE MEGANTIC	ELDER DEMPSTER LINE	"	4
LAKE SUPERIOR	ELDER DEMPSTER LINE	"	9
DOMINION (Cold Storage)	DOMINION LINE	"	12
PARISIAN (Cold Storage)	ALLAN LINE	"	12
LAKE ONTARIO	ELDER DEMPSTER LINE	"	18
CAMBROMAN (Cold Storage)	DOMINION LINE	"	19

TO GLASGOW.

BRAZILIAN (Cold Storage)	ALLAN LINE	May	1
ALCIDES	DONALDSON LINE	"	2
BUENOS AYREAN	ALLAN LINE	"	8
KASTALIA (Cold Storage)	DONALDSON LINE	"	9
SARMATIAN	ALLAN LINE	"	15
AMARYNTHIA	DONALDSON LINE	"	16

TO LONDON.

MONTVIDEAN	ALLAN LINE	May	5
OCHANO	ELDER-DEMPSTER LINE	"	10
ALLENDALE	THOMSON LINE	"	11
MONTPELLIER	ELDER-DEMPSTER	"	12
FREMONA	THOMSON LINE	"	18
ORCADIAN	ALLAN LINE	"	19

TO BRISTOL.

MEMNON	DOMINION ELDER DEMPSTER LINE	May	3
DEGAMA	DOMINION ELDER DEMPSTER LINE	"	10
ETOLIA	DOMINION ELDER DEMPSTER LINE	"	17

TO MANCHESTER.

MANCHESTER CITY	MANCHESTER LINERS	May	5
MANCHESTER COMMERCE	MANCHESTER LINERS	"	19

TO BELFAST.

RAMORE HEAD	HEAD LINE	May	3
TORR HEAD	HEAD LINE	"	15

TO DUBLIN.

BENGORE HEAD	HEAD LINE	May	8
MAJIN HEAD	HEAD LINE	"	15

TO LEITH.

JACONA	THOMSON LINE	May	11
--------	--------------	-----	----

TO ABERDEEN.

ESCALONA	THOMSON LINE	May	15
----------	--------------	-----	----

TO CARDIFF.

LORD LANSDOWNE	LORD LINE	May	14
LARNE	LORD LINE	"	18

TO HAVRE AND BORDEAUX.

ROGER	FRANCO CANADIENNE LINE	May	10
-------	------------------------	-----	----

TO ANTWERP.

DAITON HALL	FURNESS LINE	May	9
ALBANIAN	LEYLAND LINE	"	15

TO HAMBURG.

CHERUSKIA	H.A.P. LINE	May	10
WESTPHALIA	H.A.P. LINE	"	19

TO CHARLOTTETOWN, P.E.I., NORTH SYDNEY, C.B. AND ST. JOHN'S, N'fd.

POLINO	DOBELL LINE	May	1
CACOUNA	BLACK DIAMOND LINE	"	5
GREETLANDS	DOBELL LINE	"	10
BONAVISTA	BLACK DIAMOND LINE	"	12
POLINO	DOBELL LINE	"	18

QUEBEC, FATHER POINT, GASPE, MALBAY, PERCE, CAPE COVE, AND ST. JOHN'S N'fd.

CAMPANA	QUEBEC S.S. CO. LINE	Apr.	28
CAMPANA	QUEBEC S.S. CO. LINE	May	7

