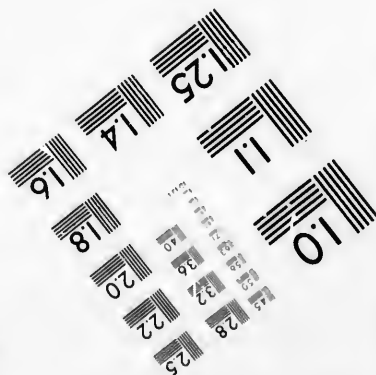
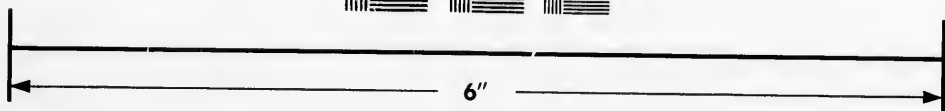
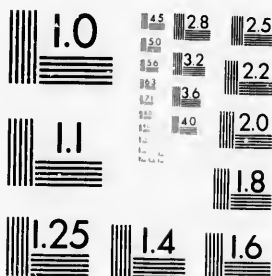


IMAGE EVALUATION TEST TARGET (MT-3)



Photographic
Sciences
Corporation

23 WEST MAIN STREET
WEBSTER, N.Y. 14580
(716) 872-4503

1.5 2.8 2.5
1.9 3.2
3.6 2.2
2.0
1.8

**CIHM/ICMH
Microfiche
Series.**

**CIHM/ICMH
Collection de
microfiches.**

10



Canadian Institute for Historical Microreproductions

Institut canadien de microreproductions historiques

1980

Technical and Bibliographic Notes/Notes techniques et bibliographiques

The Institute has attempted to obtain the best original copy available for filming. Features of this copy which may be bibliographically unique, which may alter any of the images in the reproduction, or which may significantly change the usual method of filming, are checked below.

L'Institut a microfilmé le meilleur exemplaire qu'il lui a été possible de se procurer. Les détails de cet exemplaire qui sont peut-être uniques du point de vue bibliographique, qui peuvent modifier une image reproduite, ou qui peuvent exiger une modification dans la méthode normale de filmage sont indiqués ci-dessous.

- Coloured covers/
Couverture de couleur
- Covers damaged/
Couverture endommagée
- Covers restored and/or laminated/
Couverture restaurée et/ou pelliculée
- Cover title missing/
Le titre de couverture manque
- Coloured maps/
Cartes géographiques en couleur
- Coloured ink (i.e. other than blue or black)/
Encre de couleur (i.e. autre que bleue ou noire)
- Coloured plates and/or illustrations/
Planches et/ou illustrations en couleur
- Bound with other material/
Relié avec d'autres documents
- Tight binding may cause shadows or distortion
along interior margin/
La reliure serrée peut causer de l'ombre ou de la
distortion le long de la marge intérieure
- Blank leaves added during restoration may
appear within the text. Whenever possible, these
have been omitted from filming/
Il se peut que certaines pages blanches ajoutées
lors d'une restauration apparaissent dans le texte,
mais, lorsque cela était possible, ces pages n'ont
pas été filmées.
- Additional comments:/
Commentaires supplémentaires:

- Coloured pages/
Pages de couleur
- Pages damaged/
Pages endommagées
- Pages restored and/or laminated/
Pages restaurées et/ou pelliculées
- Pages discoloured, stained or foxed/
Pages décolorées, tachetées ou piquées
- Pages detached/
Pages détachées
- Showthrough/
Transparence
- Quality of print varies/
Qualité inégale de l'impression
- Includes supplementary material/
Comprend du matériel supplémentaire
- Only edition available/
Seule édition disponible
- Pages wholly or partially obscured by errata
slips, tissues, etc., have been refilmed to
ensure the best possible image/
Les pages totalement ou partiellement
obscurcies par un feuillet d'errata, une pelure,
etc., ont été filmées à nouveau de façon à
obtenir la meilleure image possible.

This item is filmed at the reduction ratio checked below/
Ce document est filmé au taux de réduction indiqué ci-dessous.

10X	12X	14X	16X	18X	20X	22X	24X	26X	28X	30X	32X
				✓							

The copy filmed here has been reproduced thanks to the generosity of:

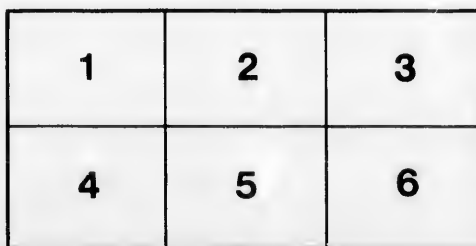
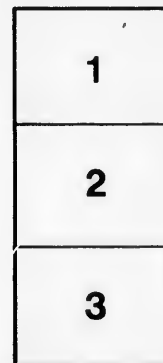
Douglas Library
Queen's University

The images appearing here are the best quality possible considering the condition and legibility of the original copy and in keeping with the filming contract specifications.

Original copies in printed paper covers are filmed beginning with the front cover and ending on the last page with a printed or illustrated impression, or the back cover when appropriate. All other original copies are filmed beginning on the first page with a printed or illustrated impression, and ending on the last page with a printed or illustrated impression.

The last recorded frame on each microfiche shall contain the symbol \rightarrow (meaning "CONTINUED"), or the symbol ∇ (meaning "END"), whichever applies.

Maps, plates, charts, etc., may be filmed at different reduction ratios. Those too large to be entirely included in one exposure are filmed beginning in the upper left hand corner, left to right and top to bottom, as many frames as required. The following diagrams illustrate the method:



L'exemplaire filmé fut reproduit grâce à la générosité de:

Douglas Library
Queen's University

Les images suivantes ont été reproduites avec le plus grand soin, compte tenu de la condition et de la netteté de l'exemplaire filmé, et en conformité avec les conditions du contrat de filmage.

Les exemplaires originaux dont la couverture en papier est imprimée sont filmés en commençant par le premier plat et en terminant soit par la dernière page qui comporte une empreinte d'impression ou d'illustration, soit par le second plat, selon le cas. Tous les autres exemplaires originaux sont filmés en commençant par la première page qui comporte une empreinte d'impression ou d'illustration et en terminant par la dernière page qui comporte une telle empreinte.

Un des symboles suivants apparaîtra sur la dernière image de chaque microfiche, selon le cas: le symbole \rightarrow signifie "A SUIVRE", le symbole ∇ signifie "FIN".

Les cartes, planches, tableaux, etc., peuvent être filmés à des taux de réduction différents. Lorsque le document est trop grand pour être reproduit en un seul cliché, il est filmé à partir de l'angle supérieur gauche, de gauche à droite, et de haut en bas, en prenant le nombre d'images nécessaire. Les diagrammes suivants illustrent la méthode.

errata
to

pelure,
on à





NT in C.A.

5-

EX. BRITISH MEDICAL ASSOCIATION OFFICIAL GUIDE
AND SOUVENIR, PP. 45-49, MONTREAL, 1897.

F5618

SYNOPSIS
OF THE
GEOLOGY OF MONTREAL

By H. M. AMI, M.A., D.Sc.

FELLOW OF THE GEOLOGICAL SOCIETIES OF LONDON,
SWITZERLAND AND AMERICA

1897

A 516

AUTHOR'S EDITION.

DEC. 1897.

The EDITH *and* LORNE PIERCE
COLLECTION *of* CANADIANA



Queen's University at Kingston

PRINTED BY

THE CANADA ENGRAVING & LITHOGRAPHING CO., LTD.

MONTREAL.



THE GEOLOGY OF MONTREAL.

Fourteen distinct geological formations or horizons have been described within a radius of a few miles from Montreal. Four of these belong to the Quaternary or newest system, one is doubtfully but probably referable to the Devonian, one to the Silurian (Upper Silurian of Murchison), seven to the Ordovician (Lower Silurian and Cambro-Silurian of many authors), and the remainder to the Laurentian or part of the great Archæan Complex.

A geological map of Montreal and its environs would comprise four areas marked by four distinct orographic features worthy of note, as follows :

(1) A more or less hilly and mountainous plateau of Archæan rocks to the north and north-west of Montreal.

(2) A broad, flat, more or less elevated Ordovician plain.

(3) A number of conspicuous, more or less elevated conical mountains or hills of volcanic origin rising through the Ordovician plain.

(4) Alluvium, marine clays and sands, gravel terraces and raised beaches accompanied by "till" and numerous phenomena characteristic of the "Great Ice Age."

SUMMARY OF THE VARIOUS GEOLOGICAL FORMATIONS IN
AND AROUND MONTREAL, CANADA, AND SOME OF
THEIR MORE SALIENT CHARACTERS.

PLEISTOCENE.

Exclusive of the fresh-water, lake and river deposits of more recent times, the Pleistocene formations, in descending order, consist of the following :

I. SAXICAVA SAND FORMATION, of Eastern Canada. Characteristic fossils : *Saxicava rugosa*, *Mya arenaria*, *M. truncata*, *Macoma fragilis*.

II. LEDA CLAY FORMATION, marine clays with occasional sandy partings ; foraminiferal. Fossils : *Leda (Portlandia) arctica*, *Craniella Logani*, *Ophioglypha Sarsii*, *Polystomella crispa*, etc.

III. GLACIAL OR BOULDER CLAYS, TILL. No fossil remains have as yet been found in the glacial clays of Montreal.

Localities : St. Louis and Mile-End Quarries, the Tanneries, etc., are excellent collecting grounds for Pleistocene fossils.

DEVONIAN.

DEVONIAN ERUPTIVES, ETC. To the Devonian Epoch are ascribed those nepheline syenite masses, diabase, and trachyte, and other dyke rocks, which are so conspicuous and numerous about Montreal, holding Dawsonite, sodalite, elæolite-syenite, etc. The eruptive masses comprise Mount Royal, Belcæil, Montarville, Rougemont, Mount Johnson, etc.

An occasional pebble of fossiliferous Middle Devonian limestone marks the probable existence, at one time, of a basin of Devonian rocks in the Montreal district, similar to those which are known to exist farther east along the Famine River, and in

the Gaspé Peninsula of Quebec, or to the south in the Helderberg mountains of New York State. Such Devonian pebbles occur in the volcanic agglomerates or breccias of St. Helen's Island, just south of Montreal.

SILURIAN.

LOWER HELDERBERG FORMATION. Consists of somewhat limited patches of light gray and compact more or less altered limestones which abound in fossil remains, chiefly Brachiopoda. Fossils: *Favosites Gothlandicus*, *Leptæna rhomboidalis*, *Orthis eminentis*, *Strophodontia varistriata*, *S. punctulifera*, *Pentamerus galeatus*, *Spirifer concinnus*, *S. cyclopterus*, *Atrypa reticularis*, *Stenoschisma formosum*, *Platyostoma depressum*. Locality: South side of St. Helen's Island.

ORDOVICIAN.

The Ordovician (Cambro-Silurian and Lower Silurian) formations in the Montreal district are seven in number, and from the Lorraine or uppermost Ordovician in Canada, down to the Potsdam sandstone there is not a single break in the succession. From Ste. Anne, a point twenty miles west of Montreal, to Chambly, there is a complete section and series of these seven formations in descending order as follows:

I. LORRAINE ("Hudson River" of many geologists). Consists of dark brown and black, brittle, for the most part indurated clay and arenaceous shales and sandstones. Fossils: *Columnaria alveolata*, *Catazyga Headi*, *Pterinea demissa*, *Byssonychia radiata*, *Orthograptus quadrimucronatus*, *Clidophorus planulatus*, *Orthodesma parallelum*, *Cyrtolites ornatus*. Localities: Chambly, Rougemont, Rivière-des-Hurons, Belœil.

II. UTICA FORMATION. Dark brown and black, brittle and bituminous shales with occasional bands of limestone at the base. Fossils: *Retograptus* (?) *eucharis*, *Leptograptus flaccidus*, *Leptobolus insignis*, *Schizocrania filosa*, *Cornulites immaturum*, *Trocholites ammonius*, *Triarthrus Becki*. Localities: St. Helen's Island, West End, Point St. Charles, near Victoria Bridge.

III. TRENTON FORMATION. Dark gray fossiliferous limestone and shales. Fossils: *Glyptocystites Logani*, *Heterocrinus tenuis*, *Pachydictya acuta*, *Plectambonites sericea*, *Prasopora Selwyni*, *Dalmanella testudinaria*, *Parastrophia hemiplicata*, *Rafinesquina alternata*, *Trematis Montrealensis*, *T. terminalis*, *Glossina riciniiformis*, *Rhynchotrema inequivalvis*, *Cyclonema Montrealense*, *Bellerophon bilobatus*, *Conularia Trentonensis*, *Trochonema umbilicatum*, *Isotelus gigas*, *Calymena senaria*. Localities: Mile-End and St. Louis quarries, Lachine, Pointe-aux-Trembles, Hochelaga.

IV. BIRD'S EYE AND BLACK RIVER FORMATION. Dark gray impure fossiliferous limestones. Blocks of this limestone were used in constructing the piers of the Victoria Tubular Bridge. Fossils: *Tetradium fibratum*, *Columnaria Halli*, *Solenopora compacta*, *Stromatocerium rugosum*, *Helicotoma planulata*, *Cyrtodonta Huronensis*, *Bathyrurus extans*. Localities: Pointe-Claire, St. Vincent-de-Paul.

V. CHAZY FORMATION. Light and dark gray fossiliferous limestones. Fossils: *Bolboporites Americanus*, *Malocystites Murchisoni*, *Blastoidocrinus carchariædens*, *Rhynchotrema plena*, *Lingula Belli*, *Orthis*, (*Hebertella*) *borealis*, *O. imperator*, *Bathyrurus Angelini*. Localities: Saplt - au - Récollet, Back Mountain, St. Martin, Terrebonne, Caughnawaga. Excellent building stone.

VI. CALCIFEROUS FORMATION. Dark gray, impure, more or less magnesian and arenaceous, fossiliferous limestone. Fossils: *Pleurotomaria calcifera*, *P. Canadensis*, *Orthisina grandeva*, *Ophileta complanata*, *O. disjuncta*, *Hormotoma Anna*, *Metoptoma simplex*, *Orthoceras Lamarcki*, *Amphion Salteri*, *Bathynrus Cybele*, *Ribeira calcifera*, *Leperditia Anna*. Localities: Ste. Anne, Caughnawaga, Carillon.

VII. POTSDAM (SANDSTONE) FORMATION. Light yellow, rusty-weathering sandstones. Fossil remains: *Scolithus Canadensis*, *Protichnites multinoctatus*, *P. lineatus*, *P. octonotatus*, *P. septemnotatus*. Localities: Beauharnois, for tracks; Ste. Anne, for *Scolithus*.

ARCHÆAN.

LAURENTIAN. The "Morin area," north of Montreal, has been recently described by Dr. Adams, and forms a part of that extensive series of granites and granitoid gneisses, limestones and anorthosites so extensively developed everywhere in North-Eastern Canada, covering as they do an area of more than two million square miles.

For a more detailed account of the geology of Montreal and its environs, the reader is referred to volume VII of the "Annual Report of the Geological Survey of Canada," 1896, in which Dr. Ellis, Dr. Adams and the writer present the leading geological features in the stratigraphy, petrography, and palæontology respectively. The "Geology of Canada," 1863, by Sir Wm. Logan, E. Billings, Sterry Hunt, etc., also contains excellent details on the same district, besides other districts of Ontario and Quebec.

