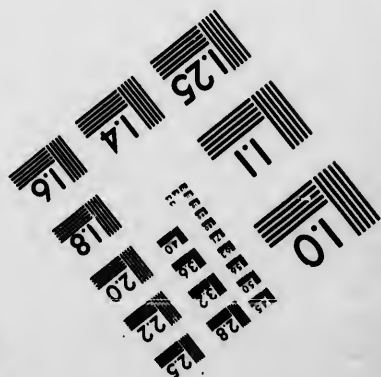
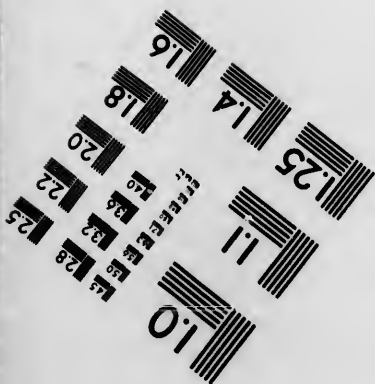
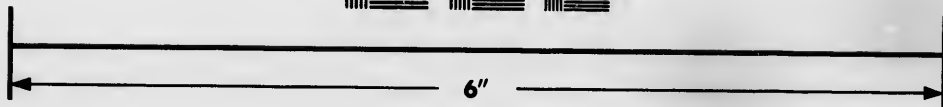
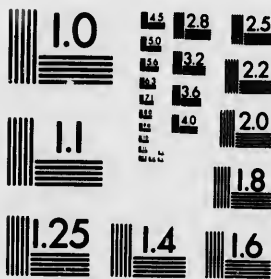


**IMAGE EVALUATION  
TEST TARGET (MT-3)**



**Photographic  
Sciences  
Corporation**

23 WEST MAIN STREET  
WEBSTER, N.Y. 14580  
(716) 872-4503

**CIHM  
Microfiche  
Series  
(Monographs)**

**ICMH  
Collection de  
microfiches  
(monographies)**



**Canadian Institute for Historical Microreproductions / Institut canadien de microreproductions historiques**

**© 1993**

Technical and Bibliographic Notes / Notes techniques et bibliographiques

The Institute has attempted to obtain the best original copy available for filming. Features of this copy which may be bibliographically unique, which may alter any of the images in the reproduction, or which may significantly change the usual method of filming, are checked below.

L'Institut a microfilmé le meilleur exemplaire qu'il lui a été possible de se procurer. Les détails de cet exemplaire qui sont peut-être uniques du point de vue bibliographique, qui peuvent modifier une image reproduite, ou qui peuvent exiger une modification dans la méthode normale de filmage sont indiqués ci-dessous.

- Coloured covers/  
Couverture de couleur
- Covers damaged/  
Couverture endommagée
- Covers restored and/or laminated/  
Couverture restaurée et/ou pelliculée
- Cover title missing/  
Le titre de couverture manque
- Coloured maps/  
Cartes géographiques en couleur
- Coloured ink (i.e. other than blue or black)/  
Encre de couleur (i.e. autre que bleue ou noire)
- Coloured plates and/or illustrations/  
Planches et/ou illustrations en couleur
- Bound with other material/  
Relié avec d'autres documents
- Tight binding may cause shadows or distortion  
along interior margin/  
La reliure serrée peut causer de l'ombre ou de la  
distorsion le long de la marge intérieure
- Blank leaves added during restoration may appear  
within the text. Whenever possible, these have  
been omitted from filming/  
Il se peut que certaines pages blanches ajoutées  
lors d'une restauration apparaissent dans le texte,  
mais, lorsque cela était possible, ces pages n'ont  
pas été filmées.

- Coloured pages/  
Pages de couleur
- Pages damaged/  
Pages endommagées
- Pages restored and/or laminated/  
Pages restaurées et/ou pelliculées
- Pages discoloured, stained or foxed/  
Pages décolorées, tachetées ou piquées
- Pages detached/  
Pages détachées
- Showthrough/  
Transparence
- Quality of print varies/  
Qualité inégale de l'impression
- Continuous pagination/  
Pagination continue
- Includes index(es)/  
Comprend un (des) index

Title on header taken from: /  
Le titre de l'en-tête provient:

- Title page of issue/  
Page de titre de la livraison
- Caption of issue/  
Titre de départ de la livraison
- Masthead/  
Générique (périodiques) de la livraison

- Additional comments: /  
Commentaires supplémentaires:

This item is filmed at the reduction ratio checked below /  
Ce document est filmé au taux de réduction indiqué ci-dessous.

10X	12X	14X	16X	18X	20X	22X	24X	26X	28X	30X	32X
<input type="checkbox"/>	<input type="checkbox"/>	<input type="checkbox"/>	<input type="checkbox"/>	<input type="checkbox"/>	<input type="checkbox"/>	<input checked="" type="checkbox"/>	<input type="checkbox"/>	<input type="checkbox"/>	<input type="checkbox"/>	<input type="checkbox"/>	<input type="checkbox"/>

The copy filmed here has been reproduced thanks to the generosity of:

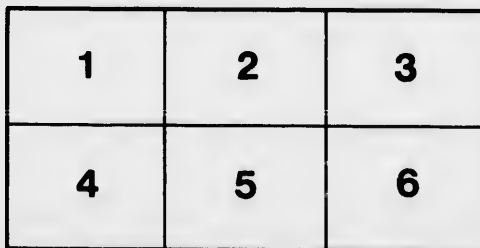
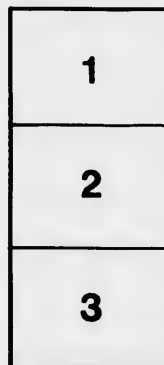
Douglas Library  
Queen's University

The images appearing here are the best quality possible considering the condition and legibility of the original copy and in keeping with the filming contract specifications.

Original copies in printed paper covers are filmed beginning with the front cover and ending on the last page with a printed or illustrated impression, or the back cover when appropriate. All other original copies are filmed beginning on the first page with a printed or illustrated impression, and ending on the last page with a printed or illustrated impression.

The last recorded frame on each microfiche shall contain the symbol → (meaning "CONTINUED"), or the symbol ▼ (meaning "END"), whichever applies.

Maps, plates, charts, etc., may be filmed at different reduction ratios. Those too large to be entirely included in one exposure are filmed beginning in the upper left hand corner, left to right and top to bottom, as many frames as required. The following diagrams illustrate the method:



L'exemplaire filmé fut reproduit grâce à la générosité de:

Douglas Library  
Queen's University

Les images suivantes ont été reproduites avec le plus grand soin, compte tenu de la condition et de la netteté de l'exemplaire filmé, et en conformité avec les conditions du contrat de filmage.

Les exemplaires originaux dont la couverture en papier est imprimée sont filmés en commençant par le premier plat et en terminant soit par la dernière page qui comporte une empreinte d'impression ou d'illustration, soit par le second plat, selon le cas. Tous les autres exemplaires originaux sont filmés en commençant par la première page qui comporte une empreinte d'impression ou d'illustration et en terminant par la dernière page qui comporte une telle empreinte.

Un des symboles suivants apparaîtra sur la dernière image de chaque microfiche, selon le cas: le symbole → signifie "A SUIVRE", le symbole ▼ signifie "FIN".

Les cartes, planches, tableaux, etc., peuvent être filmés à des taux de réduction différents. Lorsque le document est trop grand pour être reproduit en un seul cliché, il est filmé à partir de l'angle supérieur gauche, de gauche à droite, et de haut en bas, en prenant le nombre d'images nécessaire. Les diagrammes suivants illustrent la méthode.

SUMMER  
TOURS AND EXCURSIONS

~ ~ ON THE ~ ~



❧ SEASON 1893. ❧

---

The Popular and Scenic Route  
for Summer Travel.

Sun Printing Co., St. John, N. B.

1893

I 61



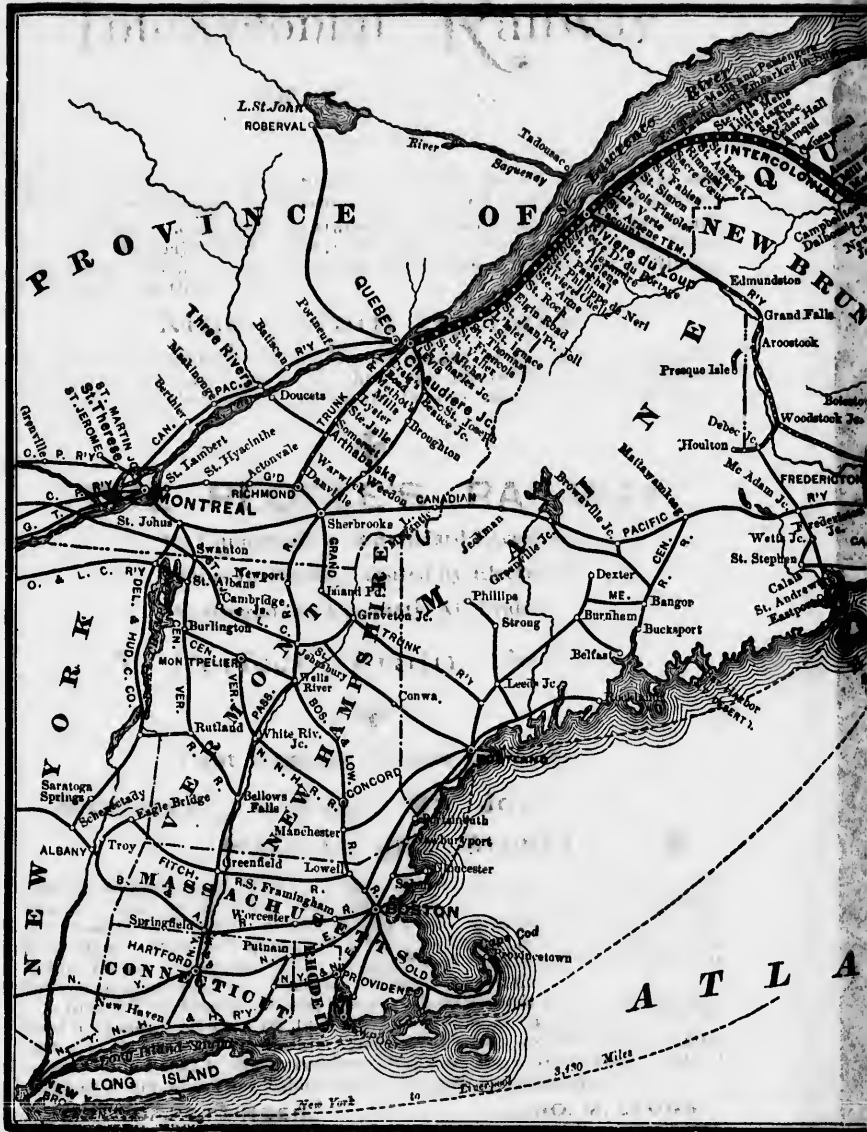
HAWAIIAN  
 INTERCOLONIAL RAILWAY  
 AND ITS  
 CONNECTIONS.

HAWAIIAN ISLANDS

MAUI

OAHU

HAWAII





MAP OF THE  
**INTERCOLONIAL RAILWAY**  
 AND ITS  
**CONNECTIONS.**

Miles





MANN  
 Far  
 The  
 Shore  
 Valley  
 unequal

and Gl  
 and Gu  
 Touris  
 Tours.

MO

Making  
 Island,  
 ica pres  
 attracti  
 lighful V  
 Intercol  
 Rou  
 good for  
 principa  
 where G  
 Summer

Gen'l Ma

... THE ...

# Intercolonial Railway

OF CANADA.

MANY of the World's Fair SUMMER RESORTS are on this Popular and Fashionable Route for Canadian and United States Summer Travel.

The Intercolonial Railway traverses for two hundred miles the South Shore of the majestic St. Lawrence, thence through the famous Lake, Valley and Mountain Region of the Metapedia and Restigouche Rivers, unequalled for their

∴ Magnificent Scenery, ∴

and along the beautiful and picturesque shores of the Baie des Chaleurs and Gulf of St. Lawrence, and is the Scenic Route through Cape Breton. Tourists should be sure to include its famous resorts in their Summer Tours.



## "THE PEOPLE'S RAILWAY."

Its Equipment is of Standard Excellence.

Trains Brilliantly Lighted by Electricity.

Westinghouse Automatic Air Brake. . .

A Perfect Train Service.



Fast Express Trains between

**MONTREAL, QUEBEC, ST. JOHN,  
HALIFAX AND SYDNEY, C. B.**

Making connections at Point du Chene and Pictou for points in Prince Edward Island, "The Garden of the Gulf of St. Lawrence." No other route in America presents to Tourists, pleasure-seekers and invalids so many unrivalled attractions. Pure Air, splendid Sea Bathing, and a perfect panorama of Delightful Views. Sportsmen will find the Rivers, Lakes and Woods along the Intercolonial unequalled. SAFETY! SPEED! COMFORT.

Round Trip Tourist Tickets, Summer Excursion and Sea Bathing Tickets, good for passage between 1st June and last of October are for sale at all the principal Railway and Steamship Agencies in Canada and the United States, where Guide Books to the Intercolonial Railway, Maps, Hotel Lists, Books of Summer Tours, also Time-Tables, can be had free on application, or to

**D. POTTINGER,**  
Gen'l Manager Canadian Government Railways,  
MONCTON, N. B.

**JNO. M. LYONS,**  
General Passenger Agent,



## Tourist Tickets

On Sale from 1st of June to 30th of September, and good for passage up to 1st November, can be had at the undermentioned Agencies, viz.:

- |                  |   |                                     |
|------------------|---|-------------------------------------|
| C. J. CARTEN,    | - - -   | 132 Hollis Street, Halifax.         |
| C. M. DAWSON,    | - - -   | Ticket Agent, Truro Station.        |
| T. E. HENDERSON, | - - -   | Ticket Agent, Moncton Station.      |
| GEO. PHILPS,     | - - -   | 97 Prince William Street, St. John. |
| E. JOHNSON,      | - - -   | Chatham Town.                       |
| D. R. McDONALD,  | Dalhousie St., Que.                                 | (adjoining Quebec ferry).           |
| T. D. SHIPMAN,   | - - -   | 32 St. Louis Street, Quebec.        |
| G. W. ROBINSON,  | - - -   | 136½ St. James Street, Montreal.    |
| N. WEATHERSTON,  | 93 York St.,  | Rossin House Block, Toronto.        |
| E. KING,         | - - -   | Sparks Street, Ottawa.              |
| O. WHITE,        | Ticket Agent Canada Eastern R'y, Fredericton, N. B. |                                     |

## SOMETHING ABOUT EXCURSIONS.

---

AMERICA is a land of humorists, and the exceeding humor of its people shines forth in their habits of life. Life was made to be enjoyed, and they enjoy it whether the sun shines or not. Not that they are an idle people, for they are notoriously the reverse, but that they pass through ordeals which would test even the jollity of Mark Tapley, and profess themselves delighted amid their afflictions. In other words, a man of business will work hard for ten or eleven months of the year, and then, with the idea that he needs rest and recreation, will put himself and his family through a course of sprouts fearful to contemplate. This course of sprouts is humorously termed a fashionable pleasure excursion. It consists in a season of preparation and packing, of setting forth "to join the innumerable caravan," and of several weeks of wretched unrest amid the dust, heat, crush and confusion of some popular resort where it is the correct thing for everyone to go. There is no little humor in all this. They seek freedom from restraint, and go to a vortex of fashion; they seek quiet, and are mingled in a Babel; they seek rest, and at the close of each day are ready to drop with fatigue. Gasping amid crowds on the hottest days, packed in overflowing hotels during the sultry nights, swindled by hackmen, bored by guides, pestered by humbugs, tormented by flies—crushed, wilted, worried, driven half mad—they, with infinite humor, term all this, pleasure!

Amid such a scene, while lying half-stifled in a small, but high-priced cell, near the eaves of some large but well crowded hotel, the weary traveller kicks the drapery of his couch from around him and lies down to troubled dreams. Amid them come visions of a land which lies by the sea and is fanned by cooling breezes from the ocean. In this land are green hills, shady groves and fertile valleys. From the distant mountains the crystal brooks come leaping with the music of gladness, and join with noble rivers in whose clear waters dwell lordly salmon and scarce less lordly trout. Near at hand are forests, as yet so little disturbed that the moose, caribou and bear, now and again visit the farmyards of the adjacent settlements and gaze in bewildered surprise at the man whose hand is raised to slay them. Along the shore, for hundreds of miles, lie land-locked harbors where even the frail bark canoe may float in safety, yet upon the waters of the ocean; and upon the smooth sand beaches of which even a child may venture into the buoyant salt-water and fear not. In this country is scenery at times of sweet pastoral

simplicity; at times of sublime grandeur. It is a land where civilization has made its way, and yet not marred the beauty of Nature. It is a country where the traveller sated with an excess of conventional "excursions" will find much that is novel, much that will charm, and much that will ever remain to him as a sweet remembrance of a pleasant clime.

"Ah!" sighs the dreamer, "would that such a lot were mine. Such places there may be, but where are they? My guide books tell not of them. To find them one must abandon the comforts of daily life, go far beyond reach of daily mails and telegrams, become isolated from the busy world, and live hundreds of miles from the confines of civilization."

Not so. You have perhaps been down the St. Lawrence as far as Quebec, from which, as the *Ultima Thule* of your excursion, you returned to your home. Take your map and trace that line which leads from Quebec down the St. Lawrence, across to New Brunswick, and down its coast to Nova Scotia, where it ends at the City of Halifax. To the east and west arms reach out to Pictou, Sydney and St. John, and another branch traverses Prince Edward Island. This is the Intercolonial Railway, "The People's Railway," one of the most substantially constructed and best equipped lines in the world. It runs through hundreds of miles of just such a country as has been mentioned. Pleasure and sport may be enjoyed in numberless places and yet the traveller will be within the reach of daily mails and the telegraph, and may live like a prince at a very moderate outlay. It is the land for which you have sighed; try it and be convinced.

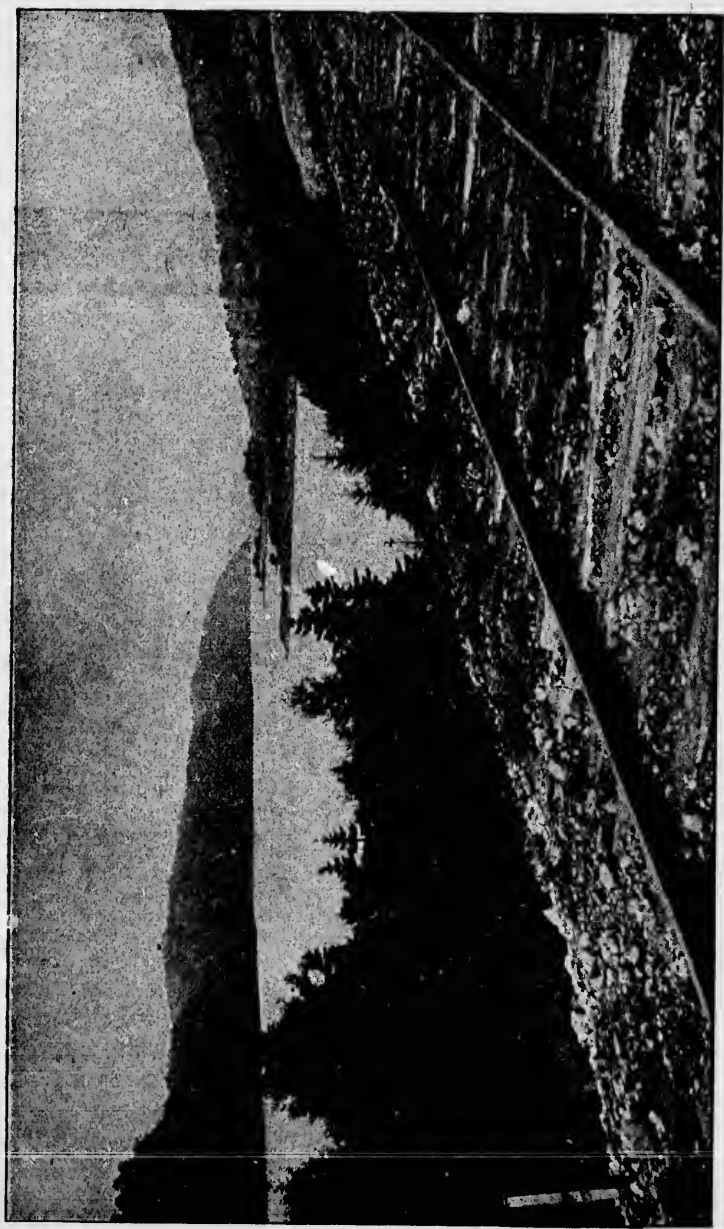


---

ivilization

It is a  
nal "ex-  
nd much  
nt clime.  
e. Such  
ll not of  
e, go far  
the busy  
on."

as far as  
returned  
n Quebec  
coast to  
and west  
ch trav-  
y, "The  
and best  
s of just  
y be en-  
he reach  
ery mod-  
t and be



VIEW OF LONG ISLAND, LITTLE BRAS D'OR

T  
T  
T  
T  
T  
T  
T  
T



VIEW OF LONG ISLAND, LITTLE BRAS D'OR

## TOURS FROM HALIFAX.

- TOUR No. 1.—Halifax to St. John, Annapolis, Halifax..... \$ 9 00  
 ROUTE,—I. C. R. to St. John, Bay of Fundy S. S. Co. to Annapolis, and W. & A. R'y to Halifax. For side trip, Middleton to Lunenburg and return, via the Nova Scotia Central R'y, add \$2.80; for side trip, Annapolis to Yarmouth and return, via the Western Counties R'y, add \$4.00.
- TOUR No. 2.—Halifax to Sydney, C. B., or North Sydney, C. B., and return (all rail)..... 8 25  
 ROUTE,—I. C. R. to Sydney via New Glasgow and Mulgrave; return same route. For side trips from Sydney or North Sydney to the following points and return: Ingonish and Neil Harbor and return, add \$4.00; Channel and Codroy and return, add \$7.00; Bay St. George and return, add \$10.50; Bay of Islands and return, add \$12.50; Bonne Bay and return, add \$14. Route via S. S. Harlow.
- TOUR No. 3.—Halifax to Pictou, Charlottetown, Summerside: return same route..... 10 10  
 ROUTE,—I. C. R. to Pictou, Charlottetown Steam Nav. Co. to Charlottetown, and P. E. I. R'y to Summerside; return same route.
- TOUR No. 4.—Halifax to Pictou, Charlottetown, Summerside, Point du Chene, Halifax..... 11 30  
 ROUTE,—I. C. R. to Pictou, Charlottetown Steam Nav. Co. to Charlottetown, and P. E. I. R'y to Summerside, Ch'town Steam Nav. Co. to Point du Chene, I. C. R. to Halifax. Side trip, Painsec Junct. to St. John and return, add \$2.90.
- TOUR No. 5.—Halifax to Campobello and return, via St. John.. 10 25  
 ROUTE,—I. C. R. to St. John, I. S. S. Co. to Campobello; return same route.
- TOUR No. 6.—Halifax to Fredericton, and return via St. John.. 10 50  
 ROUTE,—I. C. R. to St. John, Union Line Steamers to Fredericton, C. P. R'y to St. John, and I. C. R. to Halifax.
- TOUR No. 7.—Halifax to Mulgrave, thence North Sydney; return same route..... 11 75  
 ROUTE,—I. C. R. to Mulgrave, Bras d'Or Steamers to North Sydney; return same route. To go by rail and return by boat, or vice versa, between Mulgrave and North Sydney, rate \$12.20.
- TOUR No. 8.—Halifax to Annapolis, St. John, Fredericton, St. John, Halifax..... 12 00  
 ROUTE,—W. & A. R'y to Annapolis, Bay Fundy S. S. Co. to St. John, C. P. R'y to Fredericton, Union Line Steamers to St. John, I. C. R. to Halifax.



TOUR No. 9.—Halifax to Magdalen Island, and return, via Pictou	\$12 10
ROUTE,—I. C. R. to Pictou, Steamer Olaf to Magdalen Islands; return same route.	
TOUR No. 10.—Halifax, Sydney or North Sydney, Pictou, Charlottetown, S. Side, Point du Chene and St. John.....	16 40
ROUTE,—I. C. R. to Sydney, or North Sydney, thence I. C. R. to Pictou, Charlottetown Steam Nav. Co. to Charlottetown, P. E. I. R'y to S. Side, Charlottetown Steam Nav. Co. to Point du Chene, I. C. R. to St. John. To extend tour to Halifax via Bay of Fundy S. S. Co., and W. & A. R'y, add \$4.50.	
TOUR No. 11.—Halifax to St. John, Fredericton, Chatham, Halifax.....	15 30
ROUTE,—I. C. R. St. John, C. P. R. Fredericton, Canada Eastern to Chatham and Chatham Jct., I. C. R. to Halifax.	
TOUR No. 12.—Halifax to Gaspe, Bale Des Chaleurs and return, via Dalhousie.....	17 00
ROUTE,—I. C. R. to Dalhousie, Steamer Admiral to Gaspe; return same route.	
TOUR No. 13.—Halifax to Boston and return, via St. John.....	20 00
ROUTE,—I. C. R. to St. John, I. S. S. Co. to Boston, All Rail to St. John, I. C. R. to Halifax.	
TOUR No. 14.—Halifax to Quebec, Riv. du Loup by water, rail Halifax.....	22 30
ROUTE,—I. C. R. to Quebec, St. L. S. N. Co. to Riv. du Loup, I. C. R. to Halifax. Side trip, Quebec to Roberval, and return via Lake St. John Railway, \$8.00.	
TOUR No. 15.—Halifax, Sydney or North Sydney, Pictou, Charlottetown, S. Side, Pt. du Chene, Quebec....	22 65
ROUTE,—I. C. R. to Sydney, or North Sydney, thence I. C. R. to Pictou, Charlottetown Steam Navigation Co. to Ch'town, P. E. I. R'y to S. Side, Ch'town Steam Nav. Co. to Point du Chene, I. C. R. to Levis.	
TOUR No. 16.—Halifax, Riv. du Loup, Edmundston, N. B., St. John and Halifax.....	24 25
ROUTE,—I. C. R. to Riv. du Loup, Temiscouata R'y to Edmundston, C. P. R. to St. John, I. C. R. to Halifax. For side trip Riv. du Loup to Quebec and return, via I. C. R., add \$4.00; for side trip Riv. du Loup to Saguenay and return, via St. L. S. Nav. Co., add \$5. For side trip Riv. du Loup to Chicoutimi, thence to Quebec via St. L. S. Nav. Co., thence I. C. R. to Riv. du Loup, add \$9.40.	
TOUR No. 17.—Halifax to Pictou, Charlottetown, S. Side, Pt. du Chene, Levis, Halifax.....	25 90
ROUTE,—I. C. R. to Pictou, Charlottetown S. N. Co. Charlottetown, P. E. I. R'y S. Side, Charlottetown S. Nav. Co. Pt. du Chene, I. C. R. Levis and Halifax. For side trip, New Glasgow to Sydney or North Sydney and return, add \$4.20. Side trip, Quebec to Roberval, Roberval to Chicoutimi and return via Quebec and Lake St. John R'y, \$9.50.	

TOURS FROM HALIFAX.

a Pictou \$12 10  
 Olaf to  
 , Char-  
 and St.  
 ..... 16 40  
 Sydney,  
 Steam  
 S. Side,  
 Chene,  
 Halifax via  
 \$4.50.  
 n, Hall-  
 ..... 15 30  
 rictou,  
 Jct., I.  
 return.  
 ..... 17 00  
 admiral  
 ..... 20 00  
 Co. to  
 Halifax,  
 er, rail  
 ..... 22 30  
 Co. to  
 e trip,  
 John  
 Char-  
 ec.... 22 65  
 dney,  
 Steam  
 to S.  
 chene,  
 , St.  
 ..... 24 25  
 ouata  
 C. R.  
 uebec  
 e trip  
 t. L.  
 Loup  
 Nav.  
 .40.  
 t. du  
 ..... 25 90  
 S. N.  
 otte-  
 and  
 dney  
 trip,  
 and  
 9.50.

- TOUR No. 18.—Halifax, Quebec, Montreal, St. John and Halifax \$26 00  
 ROUTE,—I. C. R. Levis, G. T. R., C. P. R. or  
 Steamer to Montreal, C. P. R. to St. John, I. C.  
 R. to Halifax. Side trip Dalhousie Jct. to Gaspe  
 and return, add \$6. Riv. du Loup to Saguenay  
 and return, add \$5.
- TOUR No. 19 Halifax to Quebec, Montreal, Quebec, Riv. du Loup  
 by water, by rail Halifax..... 28 30  
 ROUTE,—I. C. R. to Quebec, rail or water to  
 Montreal, rail or water to Quebec, St. L. S. N.  
 Co. to R. du Loup, I. C. R. to Halifax.
- TOUR No. 20.—Halifax to Riv. du Loup, Chicoutimi, Quebec,  
 Halifax..... 26 90  
 ROUTE,—I. C. R. to Riv. du Loup, St. L. Steam  
 N. Co. to Chicoutimi, thence to Quebec, I. C. R.  
 to Halifax. Side trip, Dalhousie Junc. to Gaspe  
 and return, add \$6.
- TOUR No. 21.—Halifax to Quebec, Sherbrooke, Portland, Me.,  
 St. John, Halifax..... 27 00  
 ROUTE,—I. C. R. to Levis, returning any one  
 of the following routes :  
 (1) Levis to Portland, G. T. R.  
 (2) Levis to Sherbrooke, G. T. R. or Que. Central  
 R'y; Sherbrooke to Lunenburg, B. & M. R'y;  
 Lunenburg to Portland, M. C. R'y.  
 (3) Levis to Dudswell Jct., Que. Central R'y, thence  
 Portland, Maine Central R'y; Portland to St. John,  
 I. S. S. Co., I. C. R. to Halifax.  
 For "All Rail" Portland to St. John instead of  
 I. S. S. Co., add \$2.50
- TOUR No. 22.—Halifax to Quebec, Montreal, Newport, Portland,  
 St. John, Halifax..... 29 00  
 ROUTE.—I. C. R. to Levis, G. T. R., C. P. R. or  
 Steamer to Montreal, returning Montreal to Port-  
 land, rail. Ticket Agent will issue an exchange  
 order on either C. P. R. or G. T. R. at Montreal  
 for transportation Montreal to Portland via  
 direct line.  
 Portland to St. John I. S. S. Co., St. John to  
 Halifax, I. C. R.  
 For "All Rail" Portland to St. John instead of  
 steamer Portland to St. John, add \$2.50.
- TOUR No. 23.—Halifax to St. John, Boston, Springfield, New  
 York, Boston, St. John, Halifax..... 29 00  
 ROUTE.—I. C. R. to St. John, I. S. S. Co. to  
 Boston, B. & A. to Springfield, N. Y., N. H. & H.  
 to New York, Fall River Line to Boston, "All  
 Rail" Boston to St. John, I. C. R. to Halifax.
- TOUR No. 24.—Halifax to Quebec, Montreal, Ottawa, Lachine,  
 Montreal, Quebec, Halifax..... 31 00  
 ROUTE,—I. C. R. to Levis, G. T. R., C. P. R. or  
 Steamer to Montreal, G. T. R. to Coteau, C. A.  
 R'y to Ottawa, Ottawa River Nav. Co. to Mont-  
 real, C. P. R., G. T. R., or Steamer to Quebec, I.  
 C. R. to Halifax.

- TOUR No. 25.**—Halifax to Quebec and Montreal, returning via Boston and St. John..... \$31 00  
**ROUTE**,—I. C. R. to Levis, G. T. R., C. P. R. or Steamer to Montreal.  
 Agents will issue an exchange order on either C. P. R. or G. T. R. at Montreal for transportation, Montreal to Boston via direct line; Boston to St. John, I. S. S. Co. and I. C. R., St. John to Halifax.  
 For "All Rail" Boston to St. John instead of Steamer Boston to St. John, add \$3.50.
- TOUR No. 26.**—Halifax to Quebec, Montreal, St. John, Halifax.. 29 50  
**ROUTE**,—I. C. R. to Levis, G. T. R'y, C. P. R'y or Steamer to Montreal, returning rail to St. John.  
 St. John to Halifax, I. C. R'y. Ticket Agent will issue an exchange order on either C. P. R. or G. T. R. at Montreal for transportation, Montreal to St. John via C. P. R., Short Line or via G. T. R., and Portland or via Newport, Fabyan's and Portland, continuous passage.
- TOUR No. 27.**—Halifax to Dalhousie, Gaspé, Dalhousie, River du Loup, Chicoutimi, Quebec, Halifax..... 32 90  
**ROUTE**,—I. C. R. to Dalhousie, Str. Admiral to Gaspé and return. I. C. R. to River du Loup, St. L. S. N. Co. to Chicoutimi, thence to Quebec, I. C. R. to Halifax. Side trip, Quebec to Roberval and return via Quebec and Lake St. John R'y, add \$8.
- TOUR No. 28.**—Halifax to Quebec, Montreal, Boston, St. John, Halifax..... 31 00  
**ROUTE**,—I. C. R. to Levis, G. T. R., C. P. R. or Str. to Montreal. Agents will issue an exchange order on either the C. P. R. or G. T. R'y at Montreal for transportation, Montreal to Boston via direct line.  
 Boston to St. John, I. S. S. Co., St. John to Halifax, I. C. R. If rail Boston to St. John, add \$3.50.
- TOUR No. 29.**—Halifax to Quebec, Montreal, Charlottetown, Pictou, Halifax..... 29 90  
**ROUTE**,—I. C. R. to Levis, G. T. R., C. P. R. or steamer to Montreal, thence Black Diamond Line (*meals and berth included*) to Charlottetown, Charlottetown Steam N. Co. Charlottetown to Pictou, I. C. R. to Halifax.
- TOUR No. 30.**—Halifax to Quebec, Montreal, Toronto, Montreal, Quebec, Halifax..... 42 70  
**ROUTE**, I. C. R. to Levis, G. T. R., C. P. R., or steamer to Montreal, Montreal to Toronto, R. & O. N. Co. (*meals and berth included*), Toronto to Montreal, R. & O. steamer (*meals and berth extra*), G. T. R. or C. P. R., Montreal to Quebec, rail or steamer, I. C. R. to Halifax.

turning via  
..... \$31 00  
C. P. R. or

in either C.  
transportation,  
Boston to St.  
John to Hall-

instead of  
).

, Halifax.. 29 50  
C. P. R'y  
rail to St.

Agent will  
P. R. or G.  
, Montreal  
via G. T.  
Ryan's and

le, River  
fax..... 32 90  
Admiral to  
Loup, St.  
Quebec, I.  
obervaland  
y, add \$8.

St. John,  
..... 31 00  
C. P. R. or  
exchange  
y at Mont-  
Boston via

John, add

lottetown,  
..... 29 90  
C. E. R. or  
mond Line  
lottetown,  
towntown to

Montreal,  
..... 42 70  
C. P. R.,  
ronto, R.  
, Toronto  
and berth  
o Quebec.

TOUR No. 31.—Halifax to Quebec, Montreal, Toronto, Niagara Falls, New York, Boston, St. John, Halifax. \$46 00

ROUTE,—I. C. R. to Levis, G. T. R., C. P. R. or steamer to Montreal, C. P. R., G. T. R. or R. & O. N. Co. to Toronto (*meals and berth included*) G. T. R. to Niagara Falls, N. Y. C. and H. R. R'y to New York, Fall River Line to Boston, I. S. S. Co. to St. John, I. C. R. to Halifax. If "All Rail" Boston to St. John instead of steamer, add \$3.50.

TOUR No. 32.—Halifax, Quebec, Sherbrooke, Portland, Boston, Montreal, St. John, Halifax..... 46 50

ROUTE,—I. C. R. Levis, between Levis and Boston as follows: G. T. R'y to Portland, B. & M. R'y to Boston; or Q. C. R'y Levis to Sherbrooke, B. & M. R'y to Lunenburg, M. C. R'y to North Conway, B. & M. R'y to Boston. From Boston to Montreal, agents will issue an exchange order on agent B. & M. R'y at Boston, for transportation, Boston to Montreal by direct line; Montreal to St. John continuous passage, C. P. R., I. C. R. to Halifax.

TOUR No. 33.—Halifax to Dalhousie, N. B., and return..... 11 00

ROUTE,—I. C. R. For side trips, Dalhousie to Carleton and return, add \$1.50; New Richmond and return, \$2.50; Bonaventure and return, \$4.00; Paspébiac and return, \$5.00; Perce and return \$6.00; New Carlisle and return, \$4.50: route via steamer Admiral.

TOUR No. 34.—Halifax to St. John, Boston and Halifax..... 15 00

ROUTE,—I. C. R. to St. John, I. S. S. Co. to Boston, C. A. S. S. Co. to Halifax. If all rail St. John to Boston, add \$3.50.

TOUR No. 35.—Halifax to St. John, Boston, Yarmouth, Annapolis and Halifax..... 16 50

ROUTE,—I. C. R. to St. John, I. S. S. Co. to Boston, Yarmouth S. S. Co. to Yarmouth, W. C. R'y to Annapolis, W. & A. R'y to Halifax. If all rail to Boston, add \$3.50.

TOUR No. 36.—Halifax to St. John, Boston, Portland, to Quebec via White Mountains, Quebec, Halifax..... 30 00

ROUTE,—I. C. R. to St. John, I. S. S. Co. to Boston, B. & M. R'y to Portland, M. C. R'y to Dudswe! Jet., Q. C. R'y to Quebec, I. C. R. to Halifax. If all rail St. John to Boston, add \$3.50,

TOUR No. 37.—Halifax to Mulgrave, Grand Narrows, Sydney, or North Sydney to Halifax..... 15 05

ROUTE,—I. C. R. to Mulgrave, Bras d'Or S. S. Co. to Grand Narrows, I. C. R. to Sydney, or North Sydney, S. S. Harlow to Halifax.

TOUR No. 38.—Halifax to St. John, Boston, Fall River, New York, Albany, Buffalo, Niagara Falls, Toronto, Montreal, Quebec, Halifax..... 45 65

ROUTE,—I. C. R. to St. John, I. S. S. Co. to Boston, O. C. R'y to Fall River, Fall River Line

	to New York, Day Line to Albany, N. Y. C. & H. R. Ry to Niagara Falls, Grand Trunk to Toronto, R. & O. Stms., C. P. Ry or G. T. R. to Montreal, R. & O. Stms., C. P. R. or G. T. R. to Quebec, I. C. R. to Halifax. If all rail St. John to Boston, add \$3.50. Side trip, Quebec to Roberval and Chicoutimi, and return via Quebec & Lake St. John Ry, \$9.50.	
TOUR No. 39.—	Halifax to St. John, Boston, New York, Albany, Montreal, Quebec, Halifax.....	\$36 00
	ROUTE,—I. C. R. to St. John, I. S. S. Co. to Boston, Fall River Line to New York, N. Y. C. & H. Ry. to Albany, D. & H. Co. to Rouses' Point, G. T. R. to Montreal, R. & O. Stms., C. P. R. or G. T. R. to Quebec, I. C. R. to Halifax. If all rail St. John to Boston, add \$3.50.	
TOUR No. 40.—	Halifax to Cacouna or Riv. du Loup and return..	18 15
	ROUTE,—I. C. R. For side trip Saguenay and return, via St. L. S. N. Co., add \$5.	
TOUR No. 41.—	Halifax to Cacouna or River du Loup, Pt. du Chene, P. E. I., Halifax.....	24 50
	ROUTE,—I. C. R. to Cacouna or Riviere du Loup, I. C. R. to Point du Chene, Ch'town Nav. Co. to Summerside, P. E. I. Ry to Charlottetown, Ch'town Nav. Co. to Pictou, I. C. R. to Halifax. For side trip to Saguenay and return via St. L. S. N. Co., add \$5.	
TOUR No. 42.—	Halifax to Oxford Jct., Pugwash, Tatamagouche, Pictou, Halifax.....	7 30
	ROUTE,—I. C. R. Side trip Pictou to Ch'town and return, via Ch'town Nav. Co., add \$3.	
TOUR No. 43.—	Halifax to Oxford Jct., Pngwash, Tatamagouche, Pictou, Ch'town, Summerside, Point du Chene, Halifax.....	12 80
	ROUTE,—I. C. R. to Pictou, Ch'town Nav. Co. to Ch'town, P. E. I. Ry. to Summerside, Ch'town Nav. Co. to Point du Chene, I. C. R. to Halifax.	
TOUR No. 44.—	Halifax to Metapedla, P. Q., and return.....	11 00
	ROUTE,—I. C. R.	
TOUR No. 45.—	Halifax to Charlo and Return.....	10 85
	ROUTE,—I. C. R.	
TOUR No. 46.—	Halifax to Jacquet River and return.....	9 90
	ROUTE,—I. C. R.	
TOUR No. 47.—	Halifax to Little Metis and return.....	14 85
	ROUTE,—I. C. R.	
TOUR No. 48.—	Halifax to Chatham or Newcastle, and return...	8 25
	ROUTE,—I. C. R. Side trip Chatham Jct. to Fredericton and return, via Can. Eastern Ry., add \$4.80.	
TOUR No. 49.—	Halifax to Mulgrave and return.....	6 75
	ROUTE,—I. C. R.	

N. Y. C. & H.  
to Toronto,  
to Montre,  
R. to Que-  
St. John to  
e to Rober-  
nebec & Lake

ork, Albany,  
\$36 00

S. S. Co. to  
k, N. Y. C.  
ouses' Point,  
C. P. R. or  
ifax. If all

and return.. 18 15  
aguenay and

oup, Pt. du 24 50  
Riviere du  
town Nav.  
arlottetown,  
to Halifax.  
via St. L.

amagouche,  
7 30  
to Ch'town  
ld \$3.

amagouche,  
Point du 12 80  
wn Nav. Co.  
ide, Ch'town  
to Halifax.

urn..... 11 00

..... 10 85

..... 9 90

Riviere..... 14 85

hd return... 8 25  
nam Jet. to  
Eastern Ry.,

..... 6 75

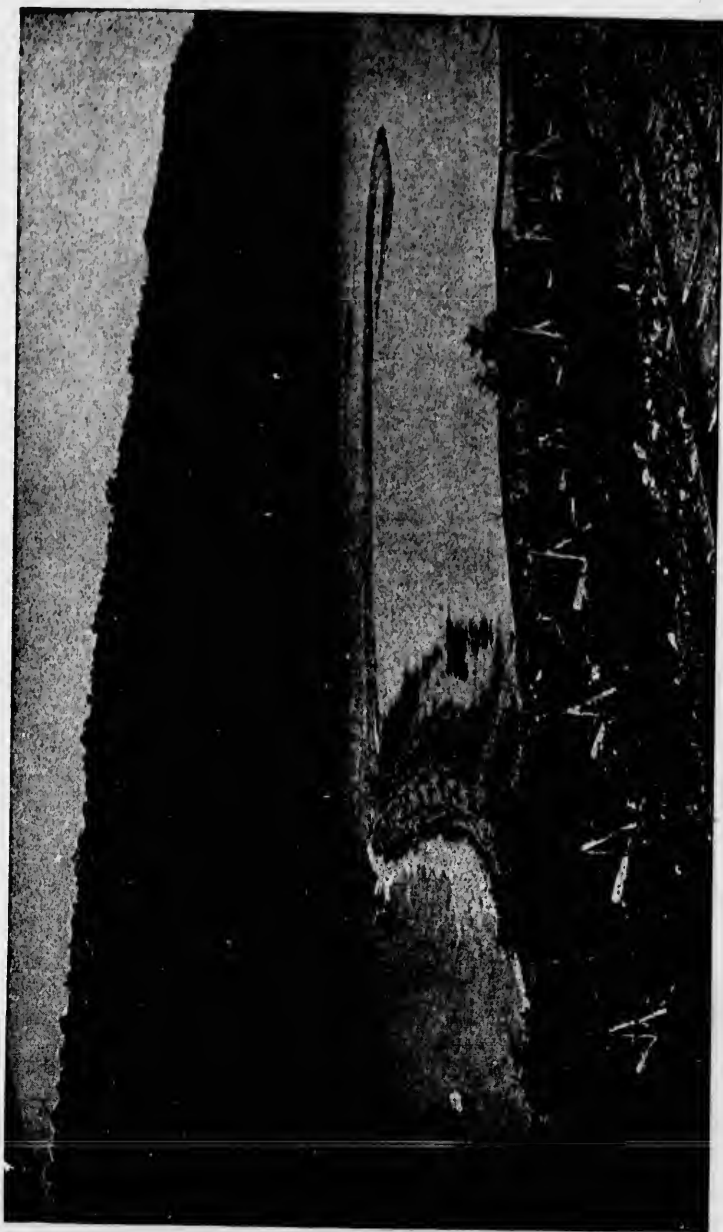
TOUR No. 50.—Halifax to Orangedale and return.....	\$7 45
ROUTE,—I. C. R.	
TOUR No. 51.—Halifax to Grand Narrows and return.....	7 70
ROUTE,—I. C. R.	
TOUR No. 52.—Halifax to Sydney or North Sydney and return..	8 25
ROUTE,—I. C. R.	
TOUR No. 53.—Halifax to Campbellton and return.....	11 00
ROUTE,—I. C. R.	
TOUR No- 54.—Halifax to Bic, P. Q., and return.....	16 50
ROUTE,—I. C. R.	
TOUR No. 55.—Halifax to Bathurst and return.....	9 50
ROUTE,—I. C. R.	
TOUR No. 56.—Halifax to Rimouski. P. Q., and return.....	16 20
ROUTE,—I. C. R.	
TOUR No. 57.—Halifax to Mulgrave, N. S. and return.....	6 75
ROUTE,—I. C. R. to Mulgrave. For side trip Port Hood, C. B., and return, add \$2.50; Mabou, C. B., and return, \$3.50; Arichat, C. B., and re- turn, \$2.00; Guysboro, N. S., and return, \$2.00; Canso and return, \$3.50. Route via stmr. Rim- ouski.	
TOUR No. 58.—Halifax to Mulgrave, Port Hood, Pictou, Halifax	10 65
ROUTE,—I. C. R. to Mulgrave, stmr. Rimouski to Port Hood, stmr. Olaf to Pictou, I. C. R. to Hal- ifax.	
TOUR No. 59.—Halifax to Mulgrave, Mabou, Pictou, Halifax...	11 15
ROUTE,—I. C. R. to Mulgrave, stmr. Rimouski to Mabou, stmr. Olaf to Pictou, I. C. R. to Hal- ifax.	
TOUR No. 60.—Halifax to Parrsboro, N. S., and return.....	6 45
ROUTE,—I. C. R. to Spring Hill Jct., C. Ry. & C. Co. to Parrsboro. C. Ry. & C. Co. to Spring Hill Jct., I. C. R. to Halifax. Side trip Parrsboro to Hantsport and return add \$2.00.	
TOUR No. 61.—Halifax to Spring Hill Jct., Parrsboro, Hantsport, Halifax.....	6 95
ROUTE,—I. C. R. to Spring Hill Jct., C. Ry. & C. Co. to Parrsboro, St. John and Minas Basin line to Hantsport, W. & A Ry. to Halifax.	

## TOURS FROM ST. JOHN.

TOUR No. 62.—St. John to Halifax, Annapolis, St. John.....	\$ 9 00
ROUTE.—I. C. R. to Halifax, W. & A. R'y. to Annapolis, Bay of Fundy S. S. Co. to St. John. For side trip Middleton to Lunenburg and return, via Nova Scotia Central Ry., add \$2.80. For side trip Annapolis to Yarmouth, N. S., and return, via Western Counties Ry., add \$4.	
TOUR No. 63.—St. John to Moncton, Chatham, Fredericton, St. John.....	9 40
ROUTE.—I. C. R. Chatham Jct., Canada Eastern to Chatham, thence to Fredericton, C. P. R. to St. John; if via Union Line steamers Fredericton to St. John, rate \$8.40.	
TOUR No. 64.—St. John to Point du Chene, Summerside, Charlottetown, Pictou, St. John.....	11 00
ROUTE.—I. C. R. to Point du Chene, Charlottetown Steam N. Co. to Summerside, P. E. I. R'y. to Charlottetown, Charlottetown Steam N. Co. to Pictou, I. C. R. to St. John. Side trip Truro to Halifax and return, add \$1.60.	
TOUR No. 65.—St. John, Sydney or North Sydney, Halifax and return (all rail).....	13 50
ROUTE.—I. C. R. to Sydney, or North Sydney, via Halifax, New Glasgow and Mulgrave and return direct. For side trips from North Sydney to the following points and return; Ingonish and Neil harbor add \$4.00; Channel and Codroy \$7.00; Bay St. George \$10.50; Bay of Islands \$12.50; Bonne Bay \$14.00. Route via S.S. Harlow.	
TOUR No. 66.—St. John to Dalhousie, Gaspe, and return via Dalhousie.....	14 00
ROUTE.—I. C. R. to Dalhousie, Stmr. Admiral Dalhousie to Gaspè, return same route.	
TOUR No. 67.—St. John, Pt. du Chene, Summerside, Charlottetown, Pictou, Sydney or North Sydney, and Halifax.....	16 40
ROUTE.—I. C. R. to Pt. du Chene, Charlottetown Steam Nav. Co. to Summerside, P. E. I. R'y. to Charlottetown, Charlottetown Steam Nav. Co. to Pictou, I. C. R. to Sydney or North Sydney, thence I. C. R. to Halifax. To extend this tour to St. John via I. C. R. or via W. & A. R'y. and Bay of Fundy S. S. Co., add \$4.50.	
TOUR No. 68.—St. John to Sydney or North Sydney and return, via Strait of Canseau.....	14 75
ROUTE.—I. C. R. to Mulgrave, Bras d'Or Steamer to North Sydney; return same route. To go by rail and return by boat or vice versa between Mulgrave and North Sydney, rate \$15.20.	

**JOHN.**

John.....	\$ 9 00
to A. R'y. to	
to St. John.	
enburg and	
., add \$2.80.	
., N. S., and	
add \$4.	
dericton, St.	
.....	9 40
anada East-	
on, C. P. R.	
ners Freder-	
erside, Char-	
.....	11 00
., Charlotte-	
P. E. I. R'y.	
eam N. Co.	
e trip Truro	
Halif x and	
.....	13 50
orth Sydney,	
ulgrave and	
orth Sydney	
n; Ingonish	
and Codroy	
of Islands	
S.S. Harlow.	
return via	
.....	14 00
Mr. Admiral	
ute.	
., Charlotte-	
Sydney, and	
.....	16 40
., Charlotte-	
de, P. E. I.	
Steam Nav.	
North Syd-	
extend this	
V. & A. R'y.	
0.	
and return,	
.....	14 75
d'Or Steam-	
oute. To go	
rsa between	
15.20.	



ALONG THE I. C. R. IN CAPE BRETON.





TOUR

TOUR

TOUR

TOUR

TOUR

TOUR

TOUR

TOUR

TOUR No. 69.—St. John to Magdalen Islands, and return via Pictou,.....	\$14 70
ROUTE.—I. C. R. to Pictou, steamer Olaf Pictou to Magdalen Islands and return, I. C. R. Pictou to St. John.	
TOUR No. 70.—St. John to Quebec and return, via St. Lawrence River.....	18 30
ROUTE.—I. C. R. to Levis, St. L. S. N. Co. to Riv du Loup, I. C. R. to St. John. Side trip, Dalhousie Jct. to Gaspé and return, add \$6, Riv. du Loup to Saguenay and return, add \$5.00.	
TOUR No. 71.—St. John to Point du Chene, Summerside, Charlottetown, Pictou, Mulgrave, Sydney, Halifax, Annapolis and St. John.....	20 65
ROUTE.—I. C. R. to Point du Chene, Charlottetown Steam Nav. Co. to Summerside, P. E. I. Ry to Charlottetown, Charlottetown Steam Nav. Co. to Pictou, I. C. R. to Sydney, and thence to Halifax. W. & A. Ry to Annapolis, Bay of Fundy Steamer to St. John.	
TOUR No. 72.—St. John, Quebec, Montreal and St. John.....	24 00
ROUTE.—I. C. R. to Levis, rail or water to Montreal, C. P. R. to St. John. Side trip, Dalhousie to Gaspé and return, add \$6; Riv. du Loup to Saguenay and return, add \$5.	
TOUR No. 73.—St. John to Montreal and return, via Quebec... ..	24 00
ROUTE.—I. C. R. to Levis, G. T. R., C. P. R., or steamer to Montreal, steamer or rail to Quebec, St. L. S. N. Co. to Riv. du Loup, I. C. R. to St. John. Side trip Dalhousie Jct. to Gaspé and return, add \$6; Riv. du Loup to Saguenay and return, add \$5.	
TOUR No. 74.—St. John, Quebec, Montreal, Boston, St. John... ..	25 50
ROUTE.—I. C. R. to Levis, rail or water to Montreal. Agents will issue an exchange order on either C. P. Ry or G. T. Ry, at Montreal, for transportation to Boston via direct line; Boston to St. John, I. S. S. Co. If all rail Boston to St. John, add \$3.50.	
TOUR No. 75.—St. John to Ottawa and return, via Quebec.....	26 75
ROUTE.—I. C. R. to Levis, G. T. R., C. P. R. or steamer to Montreal, G. T. R. to Coteau, C. A. Ry to Ottawa, Ottawa River Nav. Co. Ottawa to Montreal, G. T. R. or C. P. R. to Levis, I. C. R. to St. John. Side trip, Dalhousie Jct. to Gaspé and return, add \$6; Riv. du Loup, to Saguenay and return, add \$5.	
TOUR No. 76.—St. John to Dalhousie, Gaspé, River du Loup, Chicoutimi, Quebec, St. John.....	28 90
ROUTE.—I. C. R. to Dalhousie, Str. Admiral to Gaspé and return, I. C. R. to Riv. du Loup, St. L. S. N. Co. to Quebec, via Chicoutimi, I. C. R. to St. John.	

Tour No. 77.—St. John to Quebec, Montreal, Charlottetown, Pictou, St. John.....	\$30 50	Tour
ROUTE,—I. C. R. to Levis, rail or water to Montreal, Black Diamond Line ( <i>meals and berth included</i> ) to Charlottetown, Charlottetown Steam N. Co. to Pictou, I. C. R. to St. John.		Tour
Tour No. 78.—St. John, Halifax, Sydney or North Sydney, Pictou, Moncton via Oxford Jet, Quebec, Montreal.....	27 45	Tour
ROUTE,—I. C. R. to Halifax, I. C. R. to Sydney or North Sydney, I. C. R. to Pictou, I. C. R. to Levis via Oxford Line, thence Montreal via rail or water.		Tour
Tour No. 79.—St. John, Quebec, Montreal, Toronto, Niagara Falls, New York, Boston, St. John.....	40 50	Tour
ROUTE,—I. C. R. to Levis, rail or water to Montreal, C. P. R., G. T. R. or R. & O. N. Co. to Toronto ( <i>meals and berth included</i> ) G. T. R. to Niagara Falls, N. Y. C. & H. R. R'y to New York, Fall River Line to Boston, I. S. S. Co. to St. John. If "all rail" Boston to St. John, add \$3 50. Side trip, Schenectady to Saratoga and return via D. & H. Co., \$1.60.		Tour
Tour No. 80.—St. John, Quebec, Montreal, Toronto, Montreal, Quebec, St. John.....	41 75	Tour
ROUTE,—St. John to Levis, rail or water to Montreal, C. P. R., G. T. R. or R. & O. Strs. to Toronto ( <i>meals and berth included</i> ) C. P. R. or G. T. R. to Montreal, rail or water to Quebec, I. C. R. to St. John. If by water Toronto to Montreal, rate would be \$41.75, not including meals and berth on steamer from Toronto to Montreal.		Tour
Tour No. 81.—St. John to Quebec, Sherbrooke, Portland, Boston, Montreal, St. John.....	40 00	Tour
ROUTE,—St. John to Levis, I. C. R., between Levis and Boston, G. T. R., to Portland, B. & M. to Boston; or Q. C. R. Levis to Sherbrooke, B. & M. to Lunenburg, M. C. to North Conway, B. & M. to Boston; or G. T. R. Levis to Sherbrooke, B. & M. to Lunenburg, M. C. to North Conway, B. & M. to Boston. From Boston to Montreal, agent will issue an exchange order on B. & M. at Boston for transportation Boston to Montreal via direct line; Montreal to St. John, C. P. R. short line, continuous passage.		Tour
Tour No. 82.—St. John to Chatham, Newcastle and return...	8 25	Tour
ROUTE,—I. C. R.		
Tour No. 83.—St. John to Parrsboro, N. S., and return.....	7 00	Tour
ROUTE,—I. C. R. to Spring Hill Jct., C. R'y & C. Co. to Parrsboro, C. Ry. & C. Co. to Spring Hill Jct., I. C. R. to St. John. Side trip Parrsboro to Hantsport and return add \$2.		

Charlottetown, ..... or water to meals and berth Charlottetown Steam ship. ..... North Sydney, Jct., Quebec, ..... R. to Sydney I. C. R. to Montreal via rail ..... to, Niagara John..... or water to O. N. Co. to G. T. R. to New York, to St. John. \$3.50. Side return via D.	\$30 50	TOUR No. 84.—St. John to Jacquet River and return..... ROUTE,—I. C. R.	\$7 25
..... to Montreal, ..... or water to O. N. Co. to P. R. or G. Quebec, I. C. to to Mont- ing meals to Montreal.	27 45	TOUR No. 85.—St. John to Bathurst and return..... ROUTE,—I. C. R.	7 50
..... rtland, Bos- ..... X., between land, B. & Sherbrooke, th Conway, is to Sher- C. to North a Boston to ge order cn a Boston to o St. John, ge.	40 50	TOUR No. 86.—St. John to Charlo and return..... ROUTE,—I. C. R.	8 00
..... l return... ..... rn..... C. R'y & C. Spring Hill arsboro to	41 75	TOUR No. 87.—St. John to Metapedia, P. Q., and return..... ROUTE,—I. C. R.	8 00
		TOUR No. 88.—St. John to Dalhousie and return..... ROUTE,—I. C. R. Side trip Dalhousie to Carle- ton and return, add \$1.50; New Richmond and return, \$2.50; Bonaventure and return, \$4.00; Perce and return, \$6; Paspébiac and return, \$5; New Carlisle and return, \$4.50; route via stmr. Admiral.	8 00
		TOUR No. 89.—St. John to Campbellton and return..... ROUTE,—I. C. R. Side trip Dalhousie Jct. to Gaspé and return, add \$6.	8 00
		TOUR No. 90.—St. John to Mulgrave and return..... ROUTE,—I. C. R. Side trip to Port Hood, C. B., and return, add \$2.50; Mabou, C. B., and return, \$3.50; Arichat, C. B., and return, \$2; Guysboro, N. S., and return, \$2; Canso and return, \$3.50; route via stmr. Rimouski.	9 75
		TOUR No. 91.—St. John to Little Metis and return..... ROUTE,—I. C. R.	10 00
		TOUR No. 92.—St. John to Rimouski and return..... ROUTE,—I. C. R.	11 90
		TOUR No. 93.—St. John to Bic and return..... ROUTE,—I. C. R.	12 35
		TOUR No. 94.—St. John to Oxford Jct., Pugwash, Tatamagouche, Pictou, Charlottetown, Summerside, Point du Chene, St. John..... ROUTE,—I. C. R. to Pictou, via Oxford Jct., Ch'town Nav. Co. to Charlottetown; P. E. I. R'y to Summerside; Ch'town Nav. Co. to Point du Chene; I. C. R. to St. John.	11 00
		TOUR No. 95.—St. John to Mulgrave, Port Hood, Pictou to St. John, via Oxford Jct..... ROUTE,—I. C. R. to Mulgrave, stmr. Rimouski to Port Hood, stmr. Olaf to Pictou, I. C. R. to St. John.	14 25
		TOUR No. 96.—St. John to Mulgrave, Mabou, Pictou, St. John via Oxford Jct..... ROUTE,—I. C. R. to Mulgrave, stmr. Rimouski to Mabou, stmr. Olaf to Pictou, I. C. R. to St. John.	14 75
		TOUR No. 97.—St. John to Cacouna or Riv. du Loup and return, ROUTE,—I. C. R. Side trip to Saguenay and return via St. L. S. N. Co., add \$5.	13 50

Tour No. 98.—St. John to Halifax, Annapolis, Yarmouth, Boston, St. John.....	\$16 50
ROUTE,—I. C. R. to Halifax, W. & A. R'y to Annapolis, W. C. R'y to Yarmouth, Yarmouth S. S. Co to Boston, I. S. S. Co. to St. John. If all rail from Boston to St. John, add \$3.50.	
Tour No. 99.—St. John to Mulgrave, Grand Narrows, Sydney or North Sydney, Halifax, St. John.....	21 55
ROUTE,—I. C. R. to Mulgrave, Bras d'Or S. S. Co to Grand Narrows, I. C. R. to Sydney or North Sydney, stmr. Harlow to Halifax, I. C. R. to St. John.	
Tour No. 100.—St. John to Annapolis, Halifax, Cacouna or Riviere du Loup, Edmundston, St. John.....	24 25
ROUTE,—Bay of Fundy S. S. Co. to Annapolis, W. & A. R'y to Halifax, I. C. R. to Cacouna or Riviere du Loup, Temiscouata R'y to Edmundston, C. P. R. to St. John. Side trip to Saguenay and return via St. L. S. N. Co., add \$5.	
Tour No. 101.—St. John to Boston, Portland to Quebec, via White Mountains, Quebec and St. John...	23 50
ROUTE,—I. S. S. Co. to Boston, B. & M. R'y to Portland, M. C. Railway to Dudswell Jct., Q. C. R'y to Quebec, I. C. R. to St. John. If all rail St. John to Boston, add \$3.50.	
Tour No. 102.—St. John to Quebec, Montreal, Albany, Boston, St. John.....	28 60
ROUTE,—I. C. R. to Quebec, rail or water to Montreal, G. T. R'y to Rouse's Point, Del. and Hud. Canal Co. to Albany, B. & A. R'y to Boston, I. S. S. Co. to St. John. If all rail from Boston to St. John, add \$3.50.	
Tour No. 103.—St. John to Quebec, Montreal, Albany, New York, Boston to St. John.....	30 50
ROUTE,—I. C. R. to Quebec, R. & O. stmr., C. P. R. or G. T. R. to Montreal, G. T. R. to Rouse's Point, Del. and Hudson Canal Co. to Albany, N. Y. C. & H. R. R'y to New York, Fall River Line to Boston, I. S. S. Co. to St. John. If all rail from Boston to St. John, add \$3.50.	
Tour No. 104.—St. John to Halifax, Boston, St. John.....	15 00
ROUTE,—I. C. R. to Halifax, C. A. S. S. Co. to Boston, I. S. S. Co. to St. John. If all rail from Boston to St. John, add \$3.50.	
Tour No. 105.—St. John to Mulgrave and return.....	9 75
ROUTE,—I. C. R.	
Tour No. 106.—St. John to Orangedale and return.....	10 50
ROUTE,—I. C. R.	
Tour No. 107.—St. John to Grand Narrows and return.....	10 60
ROUTE,—I. C. R.	
Tour No. 108.—St. John to Sydney or North Sydney and return	10 25
ROUTE,—I. C. R.	

a n  
 adv  
 the  
 the  
 villa  
 scen  
 rama  
 Swit  
 wate  
 skirt  
 Chal  
 the  
 Fron  
 beau  
 of th  
 scen  
 with  
 the e  
 boati  
 beaut  
 and s  
 bathi  
 chant  
 and r  
 of da  
 Cape  
 rare b  
 seek  
 T  
 scen  
 or Syc  
 with  
 W  
 and M  
 Valley  
 T  
 never  
 inter  
 T

Yarmouth,	
.....	\$16 50
& A. R'y to	
Yarmouth	
L. John. If	
d \$3.50.	
ws, Sydney	
John.....	21 55
s d'Or S. S.	
Sydney or	
fax, I. C. R.	
na or Riv-	
John.....	24 25
Annapolis,	
Cacouna or	
Edmund-	
Saguenay	
5.	
uebec, via	
St. John...	23 50
t M. R'y to	
Jct., Q. C.	
If all rail	
y, Boston,	
.....	28 60
r water to	
, Del. and	
A. R'y to	
l rail from	
any, New	
.....	30 50
strms., C.	
to Rouse's	
Albany,	
all River	
an. If all	
0.	
.....	15 00
S. Co. to	
rail from	
.....	9 75
.....	10 50
.....	10 60
and return	10 25

## THE INTERCOLONIAL.

---

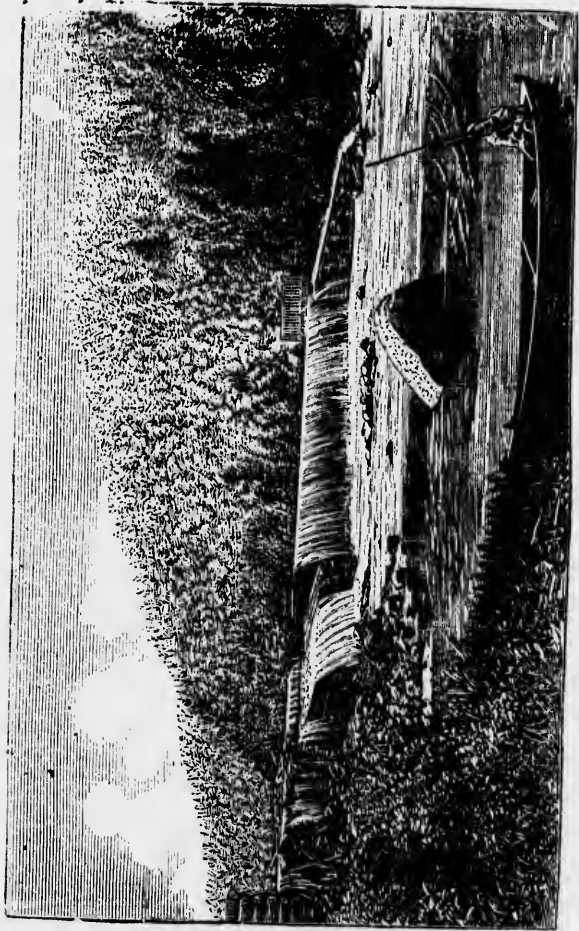
THE construction of the Intercolonial, and the connection of the Upper and Lower Provinces by a direct line of railway, has of late years opened up a new route for the tourists as well as the man of business. Each year its advantages are becoming better known, and each season sees an increase in the tide of travel upon it. Leaving Quebec this road takes its course along the south shore of the lower St. Lawrence. Here the picturesque French villages, the lordly river dotted with sails, and the bold and often beautiful scenery of the shore combine to make the beginning of an ever varying panorama of which the eye never wearies. Beyond lies the Metapedia valley, the Switzerland of this country, with its mountains of green and its "musical waters" where the Salmon have their home. Entering New Brunswick, skirting the shores of that vast and tranquil natural harbour, the Baie des Chaleurs, the traveller is borne rapidly onward, through the famed valley of the Miramichi, thence to Moncton, the headquarters of the Intercolonial. From this place one may either go direct to St. John through a settled and beautiful country, cross the Straight to Prince Edward Island, "the garden of the gulf," or continue on to Halifax, the capital of Nova Scotia. The scenery en route to the latter place is varied by hill and dale, lake and stream, with towns and villages in which the evidences of prosperity and plenty meet the eye at every point. At Halifax, with its splendid harbour, yachting and boating, ships of war, naval and military attractions, its fortifications, beautiful public gardens, royal park, delightful Bedford basin, its delicious and stimulating sea air from the Atlantic, its seashore and inland drives, its bathing in pure sea water on smooth and sunny beaches, its peaceful and enchanting North West Arm, one may spend day after day of genuine pleasure, and return to his home, invigorated, refreshed and fitted anew for the routine of daily life. Picton with its views of land and sea, its ships and its mines; Cape Breton dotted with delightful summer resorts incomparable for their rare beauty and attractiveness, ideal spots in which the pleasure and health seekers will find needed rest and change.

The glories of Cape Breton and the sunsets on the North West Arm are scenes that will ever hold a sweet spot in the memory. Historic Louisburg, or Sydney, with its coal mines reaching far into the earth, may all be visited with pleasure and profit.

Within a few hours of Halifax are also such watering-places as Chester and Mahone Bay, while in another direction lies the luxuriant Annapolis Valley, the scene of the never dying story of "Evangeline."

To the sportsman the Intercolonial opens up a land in which he need never lack for occupation. In all the numerous rivers which the railway intersects are trout to be had, often of extraordinary size and quality.

Time of, and connections with, foreign lines not guaranteed.



ON THE RIMOUSKI.

To  
To  
To  
To  
To  
To  
To  
To  
To  
To



ON THE RIMOUSKI.

## TOURS FROM QUEBEC.

- |   |       |
|---|-------|
| Tour No. 109.—Levis, Dalhousie, Gaspé; return same route. . . \$ 15 75<br>ROUTE,—I. C. R. to Dalhousie, Str. Admiral to Gaspé; return same route. For side trip, Riviere du Loup to Saguenay and return, add \$5.   | 18 50 |
| Tour No. 110.—Levis, St John, Campobello; return same route. . .<br>ROUTE,—I. C. R. to St. John, I. S. S. Co. to Campobello, return same route. For side trip, St. John to Fredericton and return, via rail one way, steamer the other, add \$3.  | 18 25 |
| Tour No. 111.—Levis to St. John, Fredericton; return same route.....<br>ROUTE,—I. C. R. to St. John, Union Line Strs. to Fredericton. C. P. Ry. to St. John, I. C. R. to Levis. Side trip R. du Loup to Saguenay and and return, S. L. Nav. Co., add \$5; side trip Dalhousie Jct. to Gaspé and return, add \$6.                        | 22 65 |
| Tour No. 112.—Levis, Pt. du Chene, S. Side, Charlottetown, Pictou, North Sydney or Sydney, Halifax. . .<br>ROUTE,—Same as tour No. 15 reversed. To extend this trip to Quebec, add \$10.00.   | 23 50 |
| Tour No. 113.—Levis, St. John, Annapolis, Halifax, Levis. . . . .<br>ROUTE,—I. C. R. to St. John, Bay Fundy S. S. Co. to Annapolis, W. & A. R'y to Halifax, I. C. R. to Levis. Side trip Annapolis to Yarmouth and return via W. C. Ry, add \$4; side trip Middleton, N. S., to Lunenburg and return via N. S. Central R'y, add \$2 80. | 24 00 |
| Tour No. 114.—Levis, St. John, Montreal Quebec.....<br>ROUTE,—I. C. R. to St. John, C. P. R'y to Montreal, rail or water, Quebec.   | 25 90 |
| Tour No. 115.—Levis, Pt. du Chene, S. Side, Charlottetown Pictou Halifax, Levis.....<br>ROUTE,—I. C. R. to Pt. du Chene, Charlottetown S. Nav. Co. to Summerside, P. E. I. R'y to Charlottetown, Charlottetown S. Nav. Co. to Pictou, I. C. R. to Halifax, I. C. R'y Levis.   | 26 75 |
| Tour No. 116.—Levis, Halifax, St. John, Edmundston, Riv. du Loup, Levis.....<br>ROUTE,—I. C. R. to Halifax and St. John, C. P. R; to Edmundston, Temiscouata R'y to Riv. du Loup, I. C. R. to Levis.  | 29 50 |
| Tour No. 117.—Levis, Moncton, Halifax, St. John, Montreal Quebec.....<br>ROUTE,—I. C. R. to Halifax, I. C. R. to St. John C. P. R'y Montreal, rail or water, Quebec:  | (10)  |

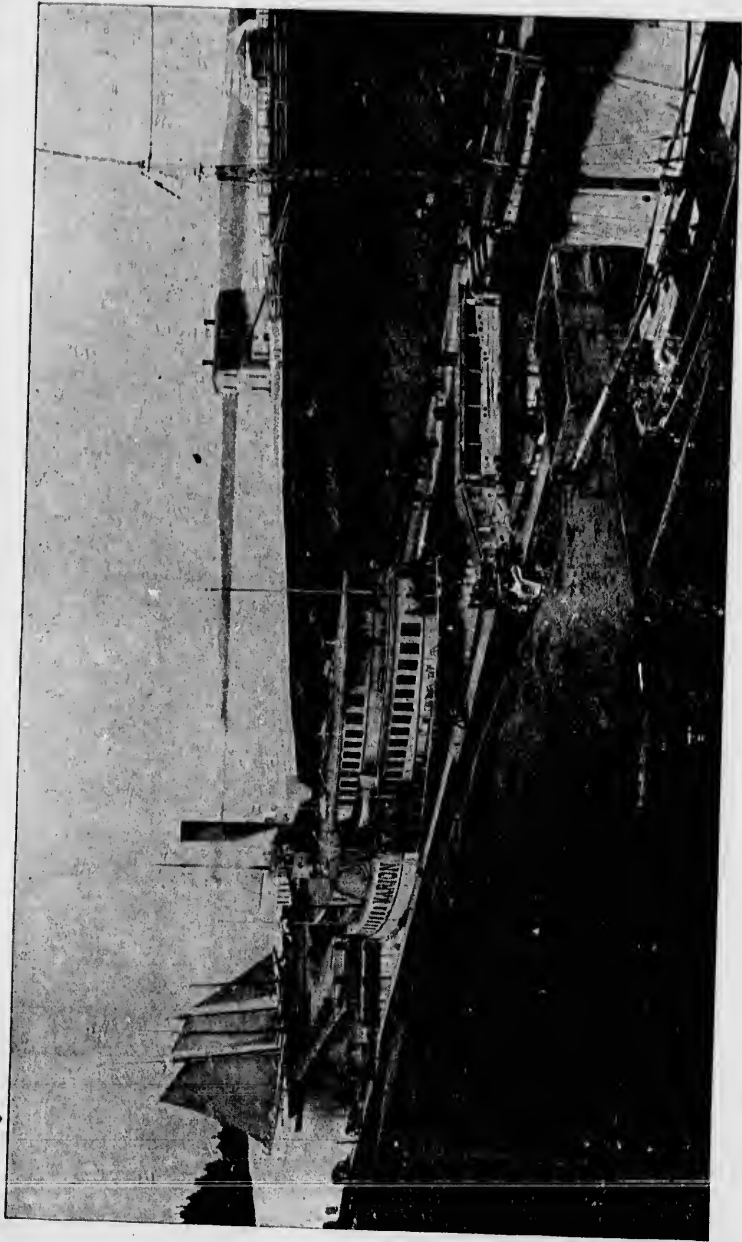


TOUR No. 118.—Levis, New Glasgow, Mulgrave, North Sydney, return same route.....	\$26 25	
ROUTE,—I. C. R. to Mulgrave, Bras d'Or Strs. to North Sydney; return same route Str. Mulgrave to North Sydney and rail North Sydney to Mulgrave, or vice versa, rate \$26.70. For side trips North Sydney to the following points and return: Ingonish and Neil Harbor \$4; Channell and Codroy, \$7; Bay St. George, \$10.50 Bay of Islands, \$12.50; Bonne Bay, \$14; route via S. S. Harlow.		TOUR
TOUR No. 119.—Levis, Halifax, Annapolis, St. John, Fredericton, St. John, Levis.....	26 00	TOUR
ROUTE,—I. C. R. to Halifax, W. & A. R'y. to Annapolis, Bay of Fundy S. S. Co. to St. John, C. P. R'y to Fredericton, Union Line Strs. to St. John, I. C. R. to Levis.		TOUR
TOUR No. 120.—Levis, Halifax, St. John, Fredericton, Chatham, Levis.....	27 90	TOUR
ROUTE,—I. C. R. to Halifax, I. C. R. to St. John, C. P. R. to Fredericton, Canada Eastern to Chatham, and return to Chatham Jct., I. C. R., to Levis Side trip Riviere du Loup to Saguenay and return via St. L. S. Nav. Co., add \$5.00; for side trip Dalhousie Jct., to Gaspé and return, add \$6.		TOUR
TOUR No. 121.—Levis to Magdalen Islands and return, via Pictou	27 20	
ROUTE,—I. C. R. to Pictou, Str. Olaf to Magdalen Islands; return same route. Side trip Riv. du Loup to Saguenay and return via St. L. S. Nav. Co., add \$5; for side trip Dalhousie Jct. to Gaspé and return, add \$6.		TOUR
TOUR No 122—Levis, St. John, Halifax Pictou, Charlottetown, S. Side Levis.....	29 40	TOUR
ROUTE,—I. C. R. to St. John, I. C. R. to Halifax, I. C. R. to Pictou, Charlottetown Stm. Nav. Co. to Charlottetown P.E.I. R'y to S. Side, Charlottetown Stm. Nav. Co. to Pt. du Chene, I. C. R. to Levis. Side trip Riv. du Loup to Saguenay and return, via St. L. S. Nav. Co., add \$5; for side trip Dalhousie Jct. to Gaspé and return, add \$6.		TOUR
TOUR No. 123.—Levis, Sherbrooke, Portland, Boston, St. John, Halifax, Levis.....	29 00	TOUR
ROUTE,—Levis to Boston, see instructions given for Tour No. 32, between Levis and Boston; Boston to St. John I. S. S. Co. (if all rail Boston to St. John, add \$3.50); St. John to Halifax and Levis I. C. R.		TOUR
TOUR No. 124.—Levis, Halifax, St. John, Boston, Montreal, Quebec.....	31 00	
ROUTE,—I. C. R. Halifax and St. John, I. S. S. Co., Boston (if all rail St. John to Boston, add		

Sydney, For Strs. Str. Mul- a Sydney .70. For ng points rbor \$4; ge, \$10.50 4; route	\$26 25	\$3 50); Boston to Montreal agent will issue an exchange order on agent Boston & Maine R'y at Boston for transportation Boston to Montreal via direct line; Montreal to Quebec, rail or water. Side trip Riv. du Loup to Saguenay and return, via St. L. S. Nav. Co., add \$5; for side trip Dalhousie Jet. to Gaspé and return, add \$6.
Fredericton, Ry. to St. John, rs. to St.	26 00	TOUR No. 125.—Quebec to Bic and return..... \$6 45 ROUTE,—I. C. R.
Chatham, St. John, Eastern ct., I. C. to Sag- Co., add spe and	27 90	TOUR No. 126.—Quebec to Little Metis and return..... 6 60 ROUTE,—I. C. R.
Pictou o Mag- de trip a St. L. sie Jct.	27 20	TOUR No. 127.—Quebec to Campbellton and return..... 9 75 ROUTE,—I. C. R.
own, S. Halifax, av. Co. Char- e, I. C. to Sag- add \$5; return,	29 40	TOUR No. 128.—Quebec to Jacquet River and return..... 9 75 ROUTE,—I. C. R.
John. ..... ctions d Bos- l rail Hali-	29 00	TOUR No. 129.—Quebec to Charlo and return..... 9 75 ROUTE,—I. C. R.
, Que- ..... , I. S. , add	31 00	TOUR No. 130.—Quebec to Metapedia and return..... 9 75 ROUTE,—I. C. R.
		TOUR No. 131.—Quebec to Dalhousie and return..... 9 75 ROUTE,—I. C. R. Side trip, Dalhousie to Carleton and return, add \$1 50; New Richmond and return, \$2.50; Bonaventure and return, \$4; Perce and return; \$6; Paspebiac and return \$5 New Carlisle and return, \$4 50. Route via Stmr. Admiral.
		TOUR No. 132.—Quebec to Bathurst and return..... 10 50 ROUTE,—I. C. R.
		TOUR No. 133.—Quebec to Chatham or Newcastle and return.. 12 00 ROUTE,—I. C. R. Side trip, Chatham Jct. to Fredericton and return via Can. Eastern R'y, add \$4.80.
		TOUR No. 134.—Quebec to Parrsboro and return..... 17 10 ROUTE,—I. C. R. to Spring Hill Jct., C. R'y & Coal Co. to Parrsboro, and return. I. C. R. to Quebec. Side trip, Parrsboro to Hantsport and return via St. John and Minas Basin route, add \$2.
		TOUR No. 135.—Quebec to Mulgrave and return..... 21 25 ROUTE,—I. C. R. Side trip Mulgrave to Port Hood, C. B., and return, add \$2.50; Mabou and return \$3.50; Arichat and return \$2; Guysboro and return \$2; Canso and return \$3.50. Route via Stmr. Rimouski.
		TOUR No. 136.—Quebec to Halifax, Boston, Portland, Bangor, Fredericton, Chatham to Quebec..... 35 55 ROUTE,—I. C. R. to Halifax, C. A. S. S. Co. to Boston, B. & M. R'y to Portland, M. C. R'y to Vanceboro, C. P. R'y to Fredericton, Can. Eastern R'y to Chatham and Chatham Jc., I. C. R. to Quebec

TOUR No. 137.—Quebec to Oxford Jct., Pugwash, Tatamagouche, Pictou, Ch'town, Summerside, Point du Chene to Quebec.....	\$23 00
ROUTE,—I. C. R. to Pictou, Ch'town Nav. Co. to Ch'town, P. E. I. R'y to Summerside, Charlottetown Nav. Co. to Point du Chene, I. C. R. to Quebec.	
TOUR No. 138.—Quebec to Point du Chene, P. E. Island, Pictou to Quebec, via Oxford Jct.....	23 00
ROUTE,—I. C. R. to Point du Chene, Ch'town Nav. Co. to Summerside, P. E. I. R'y to Charlottetown, Ch'town Nav. Co. to Pictou, I. C. R. to Quebec.	
TOUR No. 139.—Quebec to Mulgrave, Port Hood, Pictou to Quebec, via Oxford Jct.....	25 65
ROUTE,—I. C. R. to Mulgrave, Stmr Rimouski to Port Hood, Stmr. Olaf to Pictou, I. C. R. to Quebec.	
TOUR No. 140.—Quebec to Mulgrave, Mabou, Pictou to Quebec via Oxford Jct.....	26 15
ROUTE—I. C. R. to Mulgrave, stmr. Rimouski to Mabou, stmr. Olaf to Pictou, I. C. R. to Quebec.	
TOUR No. 141.—Quebec to Halifax, Annapolis, St. John, Edmundston, Riviere du Loup to Quebec....	26 75
ROUTE,—I. C. R. to Halifax, W. & A. R'y to Annapolis, Bay of Fundy S. S. Co. to St. John, C. P. R. to Edmundston, Temiscouata R'y to Riviere du Loup, I. C. R. to Quebec.	
TOUR No. 142.—Quebec to St. John, Boston, New York, Albany, Montreal to Quebec.....	30 50
ROUTE,—I. C. R. to St. John, I. S. S. Co. to Boston, Fall River Line to New York, N. Y. C. & H. R. R'y to Albany, Del & Hud. Canal Co. to Rouse's Point, G. T. R. to Montreal, rail or water to Quebec. If all rail St. John to Boston add \$3.50.	
TOUR No. 143.—Quebec to Halifax, Annapolis, Yarmouth, Boston, Portland, Montreal to Quebec.....	29 50
ROUTE,—I. C. R. to Halifax, W. & A. R'y to Annapolis, W. C. R'y to Yarmouth, Yarmouth S S Co to Boston. B. & M. R'y to Portland, G. T. R'y to Montreal, rail or water to Quebec.	
TOUR No. 144.—Quebec to Mulgrave, Grand Narrows, Sydney or North Sydney, Halifax to Quebec.....	33 25
ROUTE.—I. C. R. to Mulgrave, Bras d'Or S. S. Co. to Grand Narrows I. C. R. to Sydney or North Sydney, stmr. Harlow to Halifax, I. C. R. to Quebec.	





ENTRANCE TO ST. PETER'S CANAL, C B.

TOUR N

TOUR N

TOUR N

TOUR N

TOUR N

TOUR N

TOUR N

TOUR N



ENTRANCE TO ST. PETER'S CANAL, C. R.

## TOURS FROM MONCTON.

<p><b>Tour No. 145.</b>—Moncton, Spring Hill, Parrsboro, N. S., and Moncton.....</p> <p style="padding-left: 40px;"><b>ROUTE</b>—I. C. R. to Spring Hill Jet, Cumberland R'y &amp; Coal Co. to Parrsboro, return same route. Side trip from Parrsboro to Hantsport and return via steamer, add \$2.</p>	\$4 40
<p><b>Tour No. 146</b>—Moncton, Point du Chene, S. Side, Charlottetown, Pictou and Moncton.....</p> <p style="padding-left: 40px;"><b>ROUTE</b>—I. C. R. to Point du Chene, Charlottetown Steam Nav. Co to S side, P. E. I. R'y to Charlottetown, Charlottetown Steam Nav. Co. to Pictou, I. C. R. to Moncton via Oxford Line.</p>	8 40
<p><b>Tour No. 147.</b>—Moncton, St. John, Fredericton, Chatham and Moncton.....</p> <p style="padding-left: 40px;"><b>ROUTE</b>—I. C. R. to St. John C. P. R. to Fredericton. Canada Eastern to Chatham, and return to Chatham Jet., I. C. R. to Moncton.</p>	10 20
<p><b>Tour No. 148.</b>—Moncton, Halifax, Annapolis, St. John and Moncton.....</p> <p style="padding-left: 40px;"><b>ROUTE</b>—I. C. R. to Halifax, W. &amp; A. R'y to Annapolis, Bay of Fundy S. S. Co. to St. John, I. C. R. to Moncton. Side trip Annapolis to Yarmouth and return, via W. C. R'y, add \$4; side trip, Middleton to Lunenburg and return, via N. S. Central, R'y add \$2.80.</p>	11 15
<p><b>Tour No. 149.</b>—Moncton, Mulgrave, Sydney or North Sydney, Halifax and Moncton.....</p> <p style="padding-left: 40px;"><b>ROUTE</b>—I. C. R. to Sydney, I. C. R. to Halifax, I. C. R. to Moncton. For side trip, North Sydney to the following points and return: Ingonish and Neil Harbor, \$4; Channell and Codroy, \$7; Bay St. George, \$10.50; Bay of Islands, \$12.50; Bonne Bay, \$14. Route via S. S. Harlow.</p>	12 05
<p><b>Tour No. 150.</b>—Moncton to Dalhousie, Gaspé and return.....</p> <p style="padding-left: 40px;"><b>ROUTE</b>—I. C. R. to Dalhousie, Stmr. Admiral to Gaspé, return same route.</p>	12 70
<p><b>Tour No. 151.</b>—Moncton, S. Side, Charlottetown, Pictou, Sydney or North Sydney, Halifax and Moncton...</p> <p style="padding-left: 40px;"><b>ROUTE</b>—Same as in Tour No. 63. For side trip, North Sydney to the following points and return: Ingonish and Neil Harbor, \$4; Channell and Codroy, \$7; Bay St. George, \$10.50; Bay of Islands, \$12.50; Bonne Bay \$14. Route via S. S. Harlow.</p>	18 30
<p><b>Tour No. 152.</b>—Moncton, St. John, Boston St. John and Moncton</p> <p style="padding-left: 40px;"><b>ROUTE</b>—I. C. R. to St. John, rail to Boston, steamer Boston to St. John, I. C. R. to Moncton. Side trip Boston to New York and return via Fall River Line, \$8 additional.</p>	16 25

<p>TOUR No. 153.—Moncton, S. Side, Charlottetown, Pictou, Sydney, Halifax, Annapolis, St. John and Moncton ROUTE.—I. C. R. to Point du Chene. Charlotte- town Steam Nav. Co. to S. Side, P. E. I. R'y to Charlottetown, Charlottetown Steam Nav. Co. to Pictou. I. C. R. to Sydney and Halifax. W. &amp; A. R'y to Annapolis, Bay of Fundy S. S. Co. to St. John, I. C. R. to Moncton.</p>	\$20 95
<p>TOUR No. 154.—Moncton, Dalhousie, Gaspé, Quebec, Moncton... ROUTE.—I. C. R. to Dalhousie, Steamer Ad- miral to Gaspé and return I. C. R. to Quebec and return to Moncton.</p>	21 60
<p>TOUR No. 155.—Moncton, St. John, Edmundston, Riv. du Loup Quebec and Moncton..... ROUTE.—I. C. R. to St. John, C. P. R. to Ed- mundston, Temiscouata R'y to Riv. du Loup, I. C. R. to Levis, I. C. R. to Moncton. Side trip Riv. du Loup to Saguenay and return, add \$5.</p>	23 50
<p>TOUR No. 156.—Moncton, St. John, Montreal, Quebec, Moncton ROUTE.—I. C. R. to St. John, C. P. R. to Montreal, rail or water to Quebec. I. C. R. to Moncton.</p>	24 00
<p>TOUR No. 157.—Moncton, St. John, Boston, Montreal, Quebec and Moncton..... ROUTE.—I. C. R. to St. John, I. S. S. Co. to Boston, Montreal to Quebec, rail or water; I. C. R. to Moncton. If all rail St. John to Boston add \$3 50. Agent will issue exchange order on ticket agent Boston &amp; Maine R'y at Boston for transportation Boston to Montreal by direct line.</p>	27 75
<p>TOUR No. 158.—Moncton to Jacquet River and return..... ROUTE.—I. C. R.</p>	6 05
<p>TOUR No. 159.—Moncton to Charlo and return..... ROUTE.—I. C. R.</p>	6 35
<p>TOUR No. 160.—Moncton to Campbellton and return..... ROUTE.—I. C. R. Side trip Dalhousie Jct. to Gaspé and return, add \$6.</p>	6 75
<p>TOUR No. 161.—Moncton to Dalhousie and return..... ROUTE.—I. C. R. Side trip Dalhousie to Carle- ton, P. Q., and return add \$1.50; New Rich- mond and return, \$2.50; Bonaventure and return, \$4; Perce and return, \$6; Paspebiac and return \$5; New Carlisle and return, \$4.50. Route via stmr. Admiral.</p>	6 70
<p>TOUR No. 162.—Moncton to Metapedia and return..... ROUTE.—I. C. R.</p>	7 10
<p>TOUR No. 163.—Moncton to Mulgrave and return..... ROUTE.—I. C. R. Side trip Mulgrave to Port Hood and return, add \$2.50; Mabou and return \$3.50; Arichat and return \$2; Guysboro and re- turn \$2; Canso and return \$3.50. Route stmr. Rimouski.</p>	8 25

\$20 95	TOUR No. 164.—Moncton to Oxford Jet., Tatamagouche, Pugwash, Pictou, Halifax, Moncton.....	\$11 15
	ROUTE,—I. C. R. Side trip Pictou to Charlottetown and return via Ch'town Nav. Co., add \$3.	
21 60	TOUR No. 165.—Moncton to Little Metis and return.....	9 15
	ROUTE,—I. C. R.	
	TOUR No. 166.—Moncton to Oxford Jet., Pugwash, Tatamagouche, Pictou, Charlottetown, return same route..	8 80
	ROUTE,—I. C. R. to Pictou, Ch'town Nav. Co. to Charlottetown, I. C. R. to Moncton.	
23 50	TOUR No. 167.—Moncton to Bic and return.....	10 10
	ROUTE,—I. C. R.	
	TOUR No. 168.—Moncton to Rimouski and return.....	9 80
	ROUTE,—I. C. R.	
24 00	TOUR No. 169.—Moncton to Mulgrave, Port Hood, Pictou, Moncton.....	12 60
	ROUTE,—I. C. R. to Mulgrave stmr. Rimouski to Port Hood, stmr. Olaf to Pictou, I. C. R. to Moncton.	
27 75	TOUR No. 170.—Moncton to Cacouna or Riviere du Loup and return.....	11 50
	ROUTE,—I. C. R. Side trip Saguenay and return via St. L. S. N. Co., add \$5.	
	TOUR No. 171.—Moncton to Mulgrave, Mabou, Pictou, Moncton	13 10
	ROUTE,—I. C. R. to Mulgrave, stmr. Rimouski to Mabou, stmr. Olaf to Pictou, I. C. R. to Moncton.	
6 05	TOUR No. 172.—Moncton to Mulgrave, Grand Narrows, Sydney or North Sydney, Halifax, Moncton.....	20 75
6 35	ROUTE,—I. C. R. to Mulgrave, Bras d'Or S. S. Co. to Grand Narrows, I. C. R. to Sydney or North Sydney, stmr. Harlow to Halifax, I. C. R. to Moncton	
6 75	TOUR No. 173.—Moncton to Halifax, Annapolis, Yarmouth, Boston, St. John, Moncton.....	18 65
6 70	ROUTE,—I. C. R. to Halifax, W. & A. R'y to Annapolis, W. C. R'y to Yarmouth, Yarmouth S. S. Co. to Boston, I. S. S. Co. to St. John, I. C. R. to Moncton. If all rail from Boston to St. John, add \$3.50.	
7 10	TOUR No. 174.—Moncton to Halifax, Annapolis, St. John, Fredericton, Edmundston, Riviere du Loup, Moncton.....	27 40
8 25	ROUTE,—I. C. R. to Halifax W. & A. R'y to Annapolis, Bay of Fundy S. S. Co. to St. John, C. P. R. to Edmundston via Fredericton, Temiscouata R'y to Riviere du Loup I. C. R. to Moncton. Side trip to Saguenay and return via St. L. S. N. Co., add \$5.	



TOUR No. 175.—Moncton to St. John, Boston, Portland to Quebec via White Mountains, Quebec, Moncton...	\$25 75
ROUTE,—I. C. R. to St. John, I. S. S. Co. to Boston, B. & M. R'y to Portland. M. C. R'y to Dudswell Jct., Q. C. R. to Quebec, I. C. R. to Moncton. If all rail St. John to Boston, add \$3.50.	
TOUR No. 176.—Moncton to St. John, Albany, Montreal, Quebec, Moncton.....	27 75
ROUTE,—I. C. R. to St. John, I. S. S. Co. to Boston, B. & A. R'y to Albany, Del. & Hud. Canal Co. to Rouse's Point, G. T. R. to Montreal rail or water to Quebec, I. C. R. to Moncton. If all rail St. John to Boston, add \$3.50.	
TOUR No. 177.—Moncton to St. John, Boston, New York, Albany Montreal, Quebec, St. John.....	32 75
ROUTE,—I. C. R. to St. John, I. S. S. Co. to Boston, Fall River Line to New York, N. Y. C. & H. R. R'y to Albany, Del. & Hud. Canal Co. to Rouse's Point, G. T. R. to Montreal, rail or water to Quebec, I. C. R. to Moncton. If all rail St. John to Boston, add \$3.50.	
TOUR No. 178.—Moncton to St. John, Boston, Fall River, New York, Albany, Buffalo, Niagara Falls, Toronto, Montreal, Quebec, Moncton.....	42 40
ROUTE,—I. C. R. to St. John, I. S. S. Co. to Boston, Old Colony to Fall River, Fall River Line to New York, Day line of stms. to Albany N. Y. C. & H. R. R'y to Niagara Falls, G. T. R'y to Toronto, rail or water to Quebec, I. C. R. to Moncton. Side trip, Schenectady to Saratoga and return, via Del. & Hud. Canal Co., add \$1.60. If all rail St. John to Boston, add \$3.50.	
TOUR No. 179.—Moncton to Halifax, Boston, St. John, Moncton	17 15
ROUTE,—I. C. R. to Halifax, C. A. S. S. Co. to Boston, I. S. S. Co. to St. John, I. C. R. to Moncton. If all rail St. John to Boston, add \$3.50.	
TOUR No. 180.—Moncton to Mulgrave and return.....	8 25
ROUTE,—I. C. R.	
TOUR NO. 181.—Moncton to Orangedale and return.....	9 00
ROUTE,—I. C. R.	
TOUR No. 182.—Moncton to Grand Narrows and return.....	9 45
ROUTE,—I. C. R.	
TOUR No. 183.—Moncton to Sydney or North Sydney and return	9 90
ROUTE,—I. C. R.	

TIME OF, AND CONNECTIONS WITH, FOREIGN LINES NOT GUARANTEED.



SIDE TRIPS OVER CONNECTIONS.—CONTINUED.

		either direction,	Rail.....	SINGLE.	RETURN.
				\$	\$
New York	to Boston,	"	Water and rail.....	5 00	
"	"	"	"	4 00	
Niagara Falls	New York	"	N. Y. C. Railway.....	9 25	
North Sydney	Channell & Codroy	"	S. S. Harlow.....		7 00
"	Bonne Bay,	"	"		14 00
"	Halifax,	"	"		12 00
Ottawa	Montreal,	"	All rail, or rail and water.....	8 00	
Parrsboro, N. S.	Spring Hill Jet,	"	C. Railway and Coal Co.....	2 50	
Point du Chene	Summerside,	"	Ch town Steam Nav. Co.....	1 00	5 00
Port Hood	Pictou,	"	S. S. Olaf.....	1 25	1 50
Quebec	Mulgrave,	"	S. S. Rimouski.....	2 00	2 25
"	Portland,	"	All lines.....	1 25	3 00
"	Montreal,	"	Rail or water.....	8 50	2 50
Riv. du Loup	Saguenay,	"	St. L. S. S. Co.....	3 00	12 50
"	Edmundston,	"	Tems. Railway.....		5 00
St. John	Boston,	"	All rail.....	2 75	5 00/
"	"	"	I. S. S. Co.....	8 00	13 50
"	Annapolis,	"	"	4 50	8 00
"	Digby, N. S.,	"	Bay F. S. S. Co.....	1 50	
"	Portland,	"	"	1 50	
"	Fredericton,	"	I. S. S. Co.....	4 00	7 00
"	"	"	G. P. Railway.....	2 00	
"	Edmundston,	"	Union Line Steamers.....	7 10	
"	St. Andrews,	"	C. P. Railway.....	3 10	
"	Eastport,	"	"	1 50	4 65
"	St. Andrews,	"	I. S. S. Co.....	1 50	2 25
"	Boston,	"	"	3 50	2 50
Yarmouth, N. S.	Yarmouth line	"	W. C. Railway.....	2 40	4 00
"	Annapolis,	"	"		

\* Issue blank Tourist form as an exchange order on B. & M. Railway at Boston, or on C. P. Railway or Grand Trunk Railway at Montreal, for the desired transportation, and mark via "Direct Line."  
 When no return fare quoted, base on single journey fare each way.



**POPULATION, HOTELS AND BOARDING HOUSES, PUBLIC HALLS AND THEATRES ON THE LINE OF THE I. C. RAILWAY.**

STATIONS.	Population.	Name of House.	Rate.	Proprietor.	No. of Guests.	Public Hall or Theatre.	Proprietor.	Seating Capacity.
Antigonish,	2 500	Central House,	\$1 50	R. Hale,	50	McDonald's Hall,	A. McDonald,	500
"	"	Cunningham's Hotel	1 50	W. E. Cunningham,	40	College,	St. F. X. College,	500
"	"	Randall's,	1 50	F. Randall,	35			
"	"	Smith's,	1 50	A. C. Smith,	30			
Amherst,	4 000	Terrace,	1 50	Calhoun Bro's,	60	Public Hall,	Company,	400
"	"	Amherst,	1 50	Geo. McFarlane,	75			
Bedford,	320	Bedford,	2 00	J. C. Morrison,	50	Temperance,	Company,	150
"	"	Bellevue.	2 00	W. Wilson,	40			
Bathurst,	1 500	Keary,	1 50	T. F. Keary,	100	Masonic,	N. F. Peppert-	300
"	"	Wilbur,	1 50	P. H. Wilbur,	20			
"	"	Carter,	1 00	J. T. Carter,	30			
"	"	Albert,	1 00	Mrs. Grant,	20			
"	"	Power,	1 00	M. Power,	20			
Campbellton,	2 500	Queen,	1 25	H. O'Keefe,	20	Masonic,	Masons,	200
"	"	Royal,	1 25	Jas. Sprunt,	30	Oddfellows'	Oddfellows,	400
"	"	Intercolonial,	1 25	D. O'Keefe,	15			
"	"	McIntyre's,	1 25	A. McIntyre,	15			
Cocama,	1 000	St. Lawrence Hall,	1 50 to 3 00	T. D. Shipman,	650	St. Lawrence,	T. D. Shipman,	400
"	"	Mansion,	1 00	C. Bertraud,	250	Mansion House,	C. Bertraud,	150
"	"	Sirois,	1 00	Ad. Sirois,	150			
"	"	Gagnon's,	1 00	Mad. F. Gagnon,	75			
"	"	Follock's	1 00	Mrs. Pollock	150			
Cap. St. Ignace,	3 589	National,	1 00	J. S. Bernard,	150	Public Hall,	Municipality,	600
"	"	Belanger's,	1 00	Mic. Belanger,	50			
Chatham,	6 000	Bowser's	2 00	Miss Bowser,	15	Masonic	J. Fotheringham,	600
"	"	Adam's,	2 00	T. Flanagan,	20	Temperance,	J. Firth,	400
"	"	Canada,	1 50	W. Johnson,	15			
Dalhousie,	800	Inch Arran,		Alexander, Managr.	300	Mechanics'	Secy,	300

POPULATION, HOTELS AND BOARDING HOUSES, PUBLIC HALLS AND THEATRES ON THE LINE OF THE I. C. RAILWAY.—CONTINUED.

Dalhousie,	800	Canada,	1 50	Alexander, Managr.	300	Mechanics,	Secy,	600
"	"	Inch Arran,	1 50	W. Johnson,	15	Temperance,	J. Firth,	400
"	"	Canada,	2 00	T. Flanagan,	20	Masonic	J. Rotheringham,	600
"	"	Adam's,	2 00	Miss Bowser,	15	Temperance,	J. Rotheringham,	600

**POPULATION, HOTELS AND BOARDING HOUSES, PUBLIC HALLS AND THEATRES ON THE LINE  
OF THE I. C. RAILWAY.—CONTINUED.**

STATIONS.	Population.	Name of House.	Rate.	Proprietor.	No. of Guests.	Public Hall or Theatre.	Proprietor.	Seating Capacity.
Dalhousie,	800	Murphy's,	\$1 50	T. Murphy,	50	Temperance,	Secy,	200
"	"	Clifton,	1 50	J. M. McLeod,	40	Masonic,	"	300
Grand Narrows,	400	Grand Narrows,	1.50 to 2.50	M. Dougal & M. Neil,	25	junction point	for Baddeck.	300
Hampton,	2 000	Vendoune,	2 00	W. T. Scribner,	50	Smith's,	J. N. Smith,	500
"	"	Leonard,	1 00	C. Leonard,	25	Agricultural,	—Flewelling,	
"	"	C. P. R.,	1 75	J. R. Humphrey,	10			
Halifax,	40 000	Halifax,	2.50 to 3.00	H. Hesslein & Son,	200	Academy,	H. L. Clark, lessee	1100
"	"	Queen,	2.50 to 3.00	Queen Hotel Co.,	300	Lyceum,	M. F. Hartigan,	800
"	"	Waverly,	2 50	Miss Romans,	60	Orpheus,	E. V. B. Foster,	650
"	"	Albion,	1 50	Jas. Grant,	60	St. Patrick's,	P. McManus,	700
"	"	Royal,	1 25	A. Windsor,	50	St. Mary's,	I. J. Brown,	500
"	"	Revere,	1 50	Chas E. Rodgers,	150	Public,	Levis Corporation	1000
Levis,	8 200	Terminus,	1 00	Lemieux & Co.,	50			
"	"	Kennebec,	1 00	J. Lawlor,	50			
"	"	Du Peuple,	1 00	T. Bernier,	50			
"	"	Levis,	1 00	M. Gregoire,	60			
"	"	St. Lawrence,	1 00	W. Lawlor,	50			
Little Metis,	400	Cascade,	1 25	John McNide,	100			
"	"	Turriff Hall,	1 00	R. Turriff,	125			
"	"	Sea Side,	1 00	W. Astle,	100			
"	"	Green Hill,	75	W. & A. Turriff,	30			
"	"	Roy's,	1 00	A. Roy,	15			
L'Islet,	2 000	Ploude's,	1 50	A. Ploude,	20			
Londonderry,	1 200	Waverly,	1 50	Jas. McLean,	35			
Moncton,	8 765	Brunswick,	2 00	Geo. McSweeney,	200	St. Bridget's,	St. Bridget, Secy	350
"	"	Royal,	1 50	W. Wallace,	120	Opera House,	A. E. Holstead,	800
"	"	Queen,	1.00 to 1.50	P. Gallagher,	60			
"	"	Commercial,	1.50 to 2.00	P. Gallagher,	100			
Mulgrave,	700	Sea Side,	15 0	P. A. Grant,	50	Public,	A. Cunningham,	250

POPULATION, HOTELS AND BOARDING HOUSES, PUBLIC HALLS AND THEATRES ON THE LINE  
OF THE I. C. RAILWAY.—CONTINUED.

STATIONS.	Population.	Name of House.	Rate.	Proprietor.	No. of Guests.	Public Hall or Theatre.	Proprietor.	Seating Capacity.
Mulgrave, .....	700	McLeod's,	\$1 00	Mrs. R. McLeod,	20			
" .....	"	Murray,	1 00	D. Murray,	20			
" .....	"	Central,	1 00	C. Wooten,	20			
North Sydney, ..	3 000	Vendome,	1 50	J. Smith,	30	Royal Albert	B. Lawlor,	600
" .....	"	Belmont,	1 50	J. McDonald,	30	Orange Hall,	G. H. Grizzell,	400
" .....	"	Presto,	1 50	B. Musgrave,	30			
" .....	"	McLellan,	1 50	T. McLellan,	35			
New Glasgow, ..	5 000	Vendome,	2 00	D. McDermaid,	100	McNeil's,	H. L. P. McNeil,	700
" .....	"	Norfolk,	2 00	H. Murray,	150	Market,	Town,	400
" .....	"	Windsor,	2 00	John Learment,	100	McGregor's,	W. Fraser,	300
New Castle, .....	2 500	Waverly,	1 50	J. McKeen,	20	Public,	E. L. Street,	500
" .....	"	Commercial,	1 50	D. Doyle,	90			
Oxford, .....	1 500	Nixon,	1 25	J. C. Faulds,	75	Public,	R. & O. Wood,	200
" .....	"	Queen,	1 25	P. A. Wronlock,	40	Public,	J. H. Reid,	400
Orangedale, .....	200	Bay View,	1 50	T. Mitchell,	30	Masonic,	Sec'y,	300
" .....	"	Central,	75 to 1 00	W. Kidston,	10	Orange,	Sec'y,	300
" .....	"	McKinnou's,	75 to 1 00	N. McKinnon,	10			
Pugwash, .....	1 500	Acadia,	1 00	Mrs. W. Chapman,	30	Elliot's,	J. A. Elliott,	500
" .....	"	Central,	1 00	E. D. Woodlock,	40	Wilson's,	A. Wilson,	400
" .....	"	American,	1 00	Mrs. Colbourn,	20			
" .....	"	Temperance,	1 00	J. G. Smith,	15			
Pictou, .....	4 000	New Reverse,	1 50	C. L. Rood,	75			
" .....	"	Central,	1 00	D. P. Adamson,	25	Masonic,	G. F. Johnstone,	350
Pt. du Chene, .....	150	Zephyr,	1 00	E. McDonald,	25	Prince Street,	Jas. Yorston,	400
Point Tupper, ..	800	Farquhar,	1 25	F. McInnis,	35	Public,	Town Clerk,	400
" .....	"	American,	1 25	J. Cameron,	30			
" .....	"	Hawkesbury,	1 25	J. Stapleton,	25			
Quebec, .....	85 000	Frontenac,	3 00 up	C. P. Ry Co,	500	Academy Music,	J. R. White,	1500

POPULATION, HOTELS AND BOARDING HOUSES, PUBLIC HALLS AND THEATRES ON THE LINE  
OF THE I. C. RAILWAY.—CONTINUED.

Quebec,	85 000	Hawkesbury, Frontenac,	1 25 1 25 3 00 up	J. Cameron, J. Stapleton, C. P. Ry Co.	30 25 500	Academy Music, J. R. White,	400 1500
---------	--------	---------------------------	-------------------------	--	-----------------	--------------------------------	-------------

POPULATION, HOTELS AND BOARDING HOUSES, PUBLIC HALLS AND THEATRES ON THE LINE  
OF THE I. C. RAILWAY.—CONTINUED.

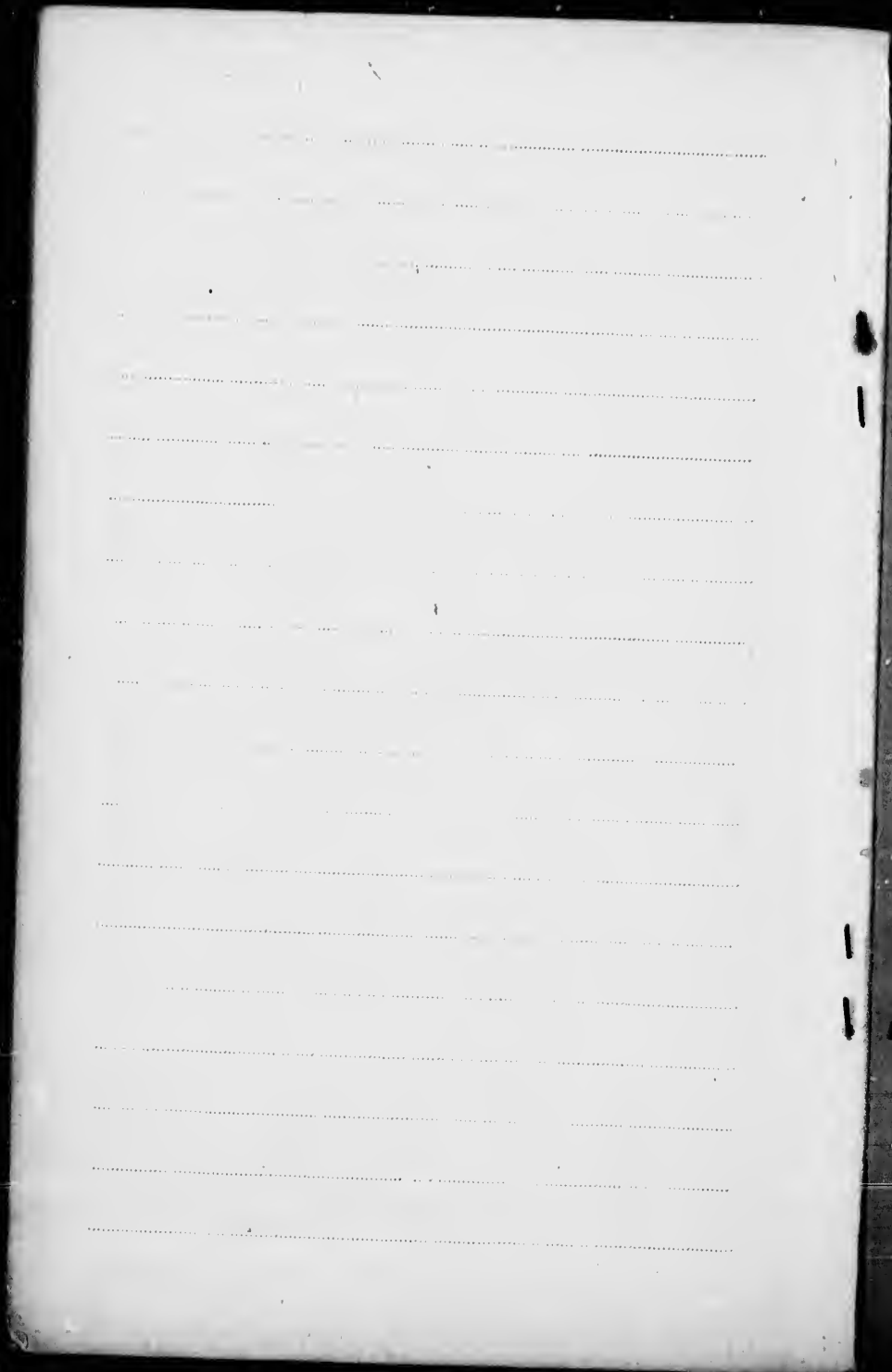
STATIONS.	Population.	Name of House.	Rate.	Proprietor.	No. of Guests.	Public Hall or Theatre.	Proprietor.	Seating Capacity.
Quebec,	85 000	St. Louis,	\$2 50	St. Louis Hotel Co.,	400	Tara Hall,	L. Kerwin,	1000
"	"	Florence,	3 00	B. Trudel,	200	Jacques Cartier,	City,	1200
"	"	Henchey's,	1.50 to 2.50	P. Henchey,	100			
"	"	Blanchard's,	1.50 to 2.50	Mrs. Pelletier,	100			
River John,	800	Riverside,	1 50	W. S. Willett,	25	Town Hall,	Hugh Campbell,	300
Rockingham,	300	St. Elmo,	1 25	H. N. Paw,	20			
Riviere du Loup,	6 000	Talbot,	2 00	E. Talbot,	100	Jarvis Hall,		
"	"	Bellevue,	2 00	J. A. Fontain,	200			
"	"	Deslaurier's,	1 50	J. Deslaurier,	50			
Rimouski,	3 000	St. Lawrence,	1 50	A. St. Laurent & Co	80			
"	"	Rimouski,	1 50	F. St. Laurent,	60			
"	"	Windsor,	1 00	P. Onellet,	30			
"	"	Ocean Steamers,	1 00	L. Leughan,	30			
Stellarton,	4 500	Tremont,	1 50	W. H. Ross,	20	Fidelity,	R. Drummond,	400
Shediac,	1 500	Weldon,	1 50	J. D. Weldon,	150	Tait's,	R. C. Tait,	500
"	"	Union,	1 00	P. D. Legere,	50			
Sackville,	5 000	Brunswick,	1 50	T. Esterbrooks,	75	Music,	A. A. Ford,	600
"	"	Intercolonial,	1 25	A. W. Dixon,	25	Chignecto,	T. Esterbrook,	300
"	"	Temperance,	1 25	Mrs. N. R. Patterson	25	Powell's,	H. A. Powell,	200
"	"	Niagara,	1 50	D. Coghill,	40	Public,	A. E. Fraser,	500
Spring Hill,	4 000	Royal,	1 50	B. McNutt,	50	Temperance,	Company,	600
Sydney,	3 000	Clarke,	1 50	Wm. Clarke,	30			
"	"	McKenzie,	1 50	H. R. McKenzie,	40			
"	"	International,	1 00	J. McKinnon,	30			
Sussex,	2 000	Queen,	1 50	P. Delorty,	50	Oddfellows',	L. O. F.	350
"	"	Depot,	1.00 to 1.50	Mrs. A. McLean,	100	Mechanics',	Institute Co.,	1200
Royal,	39 900	Royal,	3 00	T. F. Raymond,	150	Opera House,	Opera House Co.,	1200
St. John,	"	Dufferin,	3 00	F. A. Jones,	150			

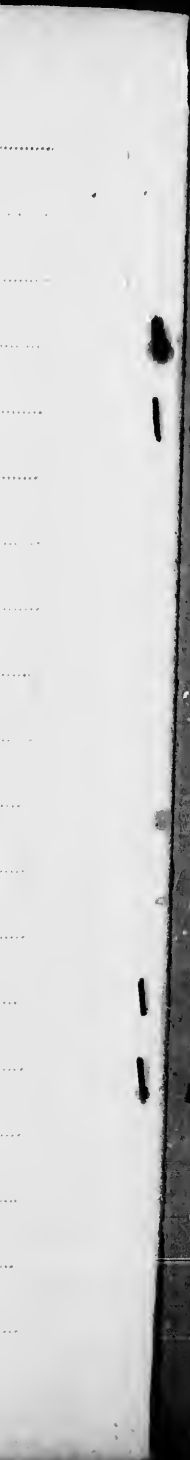


POPULATION, HOTELS AND BOARDING HOUSES, PUBLIC HALLS AND THEATRES ON THE LINE  
OF THE I. C. RAILWAY.—CONTINUED.

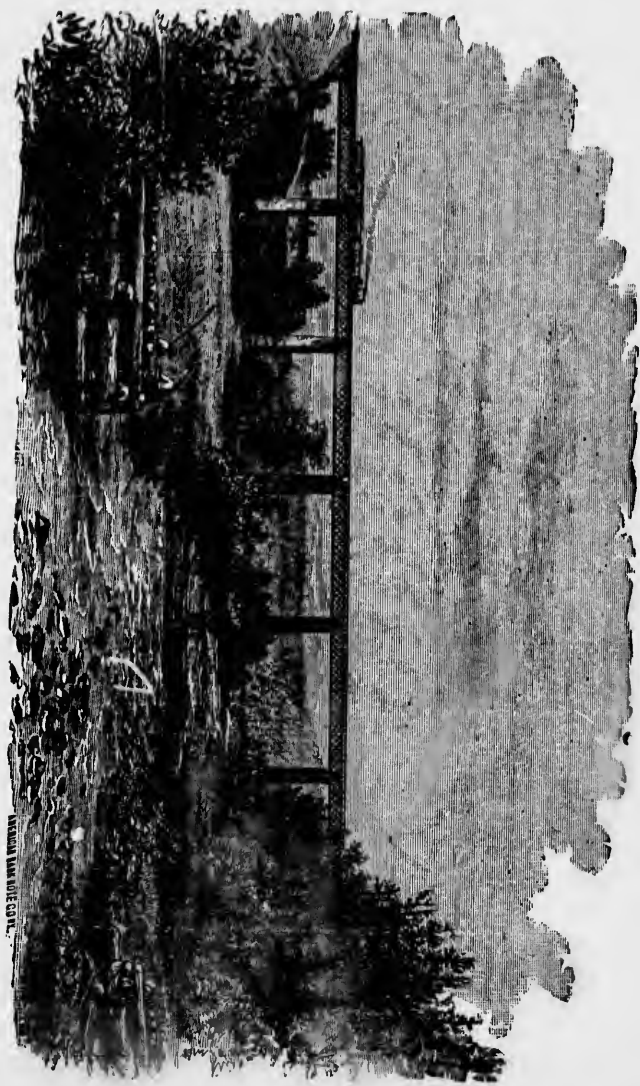
STATIONS.	Population.	Name of House.	Rate.	Proprietor.	No. of Guests.	Public Hall or Theatre.	Proprietors.	Seating Capacity.
St. John,	39 900	Victoria,	2.50 to 3.00	D. W. McCormick,	100	Berryman's,	Dr. D. Berryman,	500
"	"	New Victoria,	2.00 to 2.50	J. L. McCoskery,	100	Union,	W. C. T. Union.	600
"	"	Clifton,	2 0	A. N. Peters,	75			
St. Anaclet,	1 950	Queen,	1 50	Jas. Dickey,	75			
"	"	Tourists,	1 00	P. D. Rouleau,	40			
"	"	Pilots,	1 00	R. S. Noel,	50			
St. Flavie,	2 500	Boarding House,	1 00	Mrs. Smith,	25	Public,	N. Aubin,	300
"	"	"	1 00	D. Lavoie,	20			
"	"	"	1 00	D. Langlais,	12			
"	"	"	1 00	J. B. Charest,	25			
"	"	"	1 00	Geo. Beaulieu,	25			
(34) St. Thomas,	3 000	Cote's,	1 50	Mde F. Cote,	30	City Hall,	Town,	300
"	"	St. Louis,	1 00	Z. Belanger,	20			
"	"	Montmagny,	1 00	L. Letourneau,	30			
"	"	Hotel du Governm't	1 00	F. X. Bernier,	40			
"	"	Lavigne,	2 00	J. A. Lavigne,	50			
Trois Pistoles,	3 50	Derry,	1 25	D. Derry,	50			
Tatamagouche,	1 200	Sterling,	1 25	T. McLellan,	60	Town Hall,	Municipality,	450
Truro,	5 200	Prince of Wales,	1 50	A. L. McKenzie,	60	Opera House,	Dr. J. H. McKay	300
"	"	Learmont,	1 50	A. H. Learmont,	40	Y. M. C. A	Sect'y. Y. M. C. A.	500
"	"	Victoria,	1 25	Geo. Dupe,	50	Conversazion,	D. Gunn,	400
"	"	Parker,	1 25	Mrs. Ainsley,	40			
"	"	Bigelow,	1 25	E. C. Bigelow,	35			
"	"	Stanley,	1 25	S. Murphy,	30			
"	"	Grand Central,	1 25	A. Carter,	30			
Wallace,	1 000	Wallace,	1 25	Mrs. Munro,	25	Public,	Company,	200
"	"	Hill Side,	1 00	E. Edgett,	20			







FOLEY VLAADUOT, N. S.



AMERICAN PHOTO CO. N. Y.

