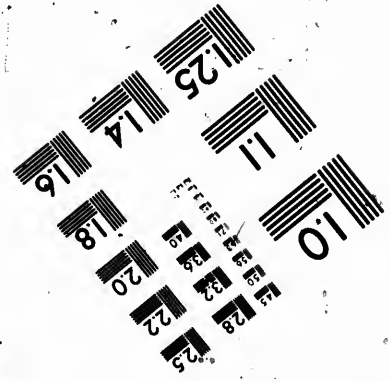
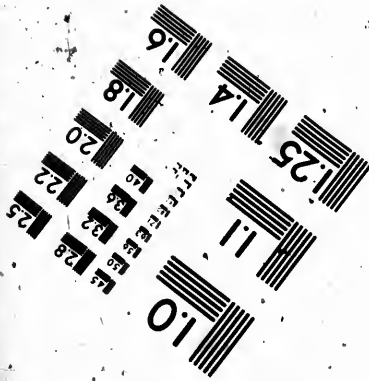
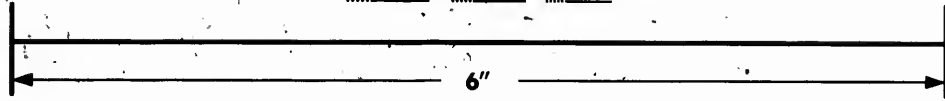
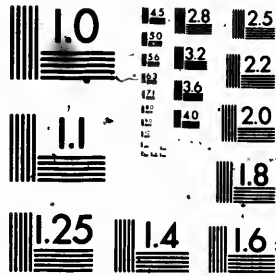


**IMAGE EVALUATION
TEST TARGET (MT-3)**



**Photographic
Sciences
Corporation**

23 WEST MAIN STREET
WEBSTER, N.Y. 14580
(716) 872-4503

15 28
16 32
18 22
19 20
1.8

**CIHM
Microfiche
Series
(Monographs)**

**ICMH
Collection de
microfiches
(monographies)**



Canadian Institute for Historical Microreproductions / Institut canadien de microreproductions historiques

11
10
1.0
1.0

© 1991

The Institute has attempted to obtain the best original copy available for filming. Features of this copy which may be bibliographically unique, which may alter any of the images in the reproduction, or which may significantly change the usual method of filming, are checked below.

- Coloured covers/
Couverture de couleur
- Covers damaged/
Couverture endommagée
- Covers restored and/or laminated/
Couverture restaurée et/ou pelliculée
- Cover title missing/
Le titre de couverture manque
- Coloured maps/
Cartes géographiques en couleur
- Coloured ink (i.e. other than blue or black)/
Encre de couleur (i.e. autre que bleue ou noire)
- Coloured plates and/or illustrations/
Planches et/ou illustrations en couleur
- Bound with other material/
Relié avec d'autres documents
- Tight binding may cause shadows or distortion
along interior margin/
La reliure serrée peut causer de l'ombre ou de la
distorsion le long de la marge intérieure
- Blank leaves added during restoration may appear
within the text. Whenever possible, these have
been omitted from filming/
Il se peut que certaines pages blanches ajoutées
lors d'une restauration apparaissent dans le texte,
mais, lorsque cela était possible, ces pages n'ont
pas été filmées.
- Additional comments: /
Commentaires supplémentaires:

This item is filmed at the reduction ratio checked below/
Ce document est filmé au taux de réduction indiqué ci-dessous.

10X		14X		18X		22X	
12X		16X	✓				

Technical and Bibliographic Notes / Notes techniques et bibliographiques

The Institute has attempted to obtain the best original copy available for filming. Features of this copy which may be bibliographically unique, which may alter any of the images in the reproduction, or which may significantly change the usual method of filming, are checked below.

- Coloured covers/
Couverture de couleur
- Covers damaged/
Couverture endommagée
- Covers restored and/or laminated/
Couverture restaurée et/ou pelliculée
- Cover title missing/
Le titre de couverture manque
- Coloured maps/
Cartes géographiques en couleur
- Coloured ink (i.e. other than blue or black)/
Encre de couleur (i.e. autre que bleue ou noire)
- Coloured plates and/or illustrations/
Planches et/ou illustrations en couleur
- Bound with other material/
Relié avec d'autres documents
- Tight binding may cause shadows or distortion along interior margin/
La reliure serrée peut causer de l'ombre ou de la distorsion le long de la marge intérieure
- Blank leaves added during restoration may appear within the text. Whenever possible, these have been omitted from filming/
Il se peut que certaines pages blanches ajoutées lors d'une restauration apparaissent dans le texte, mais, lorsque cela était possible, ces pages n'ont pas été filmées.
- Additional comments:/
Commentaires supplémentaires:

L'Institut a microfilmé le meilleur exemplaire qu'il lui a été possible de se procurer. Les détails de cet exemplaire qui sont peut-être uniques du point de vue bibliographique, qui peuvent modifier une image reproduite, ou qui peuvent exiger une modification dans la méthode normale de filmage sont indiqués ci-dessous.

- Coloured pages/
Pages de couleur
- Pages damaged/
Pages endommagées
- Pages restored and/or laminated/
Pages restaurées et/ou pelliculées
- Pages discoloured, stained or foxed/
Pages décolorées, tachetées ou piquées
- Pages detached/
Pages détachées
- Showthrough/
Transparence
- Quality of print varies/
Qualité inégale de l'impression
- Continuous pagination/
Pagination continue
- Includes index(es)/
Comprend un (des) index
- Title on header taken from:/
Le titre de l'en-tête provient:
- Title page of issue/
Page de titre de la livraison
- Caption of issue/
Titre de départ de la livraison
- Masthead/
Générique (périodiques) de la livraison

This item is filmed at the reduction ratio checked below/
Ce document est filmé au taux de réduction indiqué ci-dessous.

10X	14X	18X	22X	26X	30X
<input type="checkbox"/>	<input type="checkbox"/>	<input type="checkbox"/>	<input checked="" type="checkbox"/>	<input type="checkbox"/>	<input type="checkbox"/>
12X	16X	20X	24X	28X	32X

The copy filmed here has been reproduced to the generosity of:

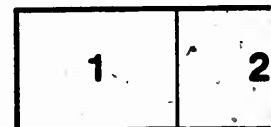
Library of the National Archives of Canada

The images appearing here are the best possible considering the condition of the original copy and in keeping with the filming contract specifications.

Original copies in printed paper cover shall begin with the front cover and the last page with a printed or illustrated impression, or the back cover when appropriate. Other original copies are filmed beginning with the first page with a printed or illustrated impression, and ending on the last page with a printed or illustrated impression.

The last recorded frame on each microfilm shall contain the symbol → (meaning "CONTINUED"), or the symbol ∇ (meaning "END"), whichever applies.

Maps, plates, charts, etc., may be filmed at different reduction ratios. Those too large to be entirely included in one exposure are filmed in two or more exposures, beginning in the upper left hand corner and right and top to bottom, as many frames as required. The following diagrams illustrate the method:



Copy filmed here has been reproduced thanks to the generosity of:

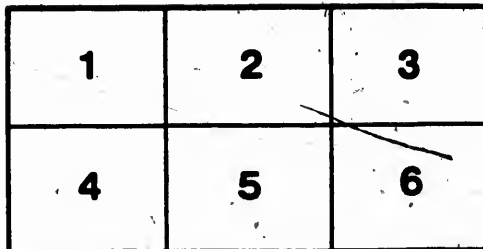
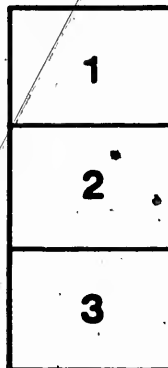
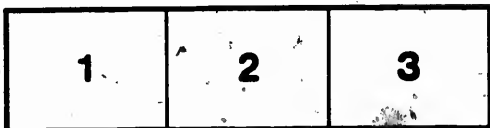
Library of the National Archives of Canada

Images appearing here are the best quality possible considering the condition and legibility of the original copy and in keeping with the contract specifications.

Original copies in printed paper covers are filmed beginning with the front cover and ending on the last page with a printed or illustrated impression. The back cover is filmed when appropriate. All original copies are filmed beginning on the first page with a printed or illustrated impression and ending on the last page with a printed or illustrated impression.

Each recorded frame on each microfiche must contain the symbol \rightarrow (meaning "CONTINUE"), or the symbol ∇ (meaning "END"), wherever applies.

Plates, charts, etc., may be filmed at various reduction ratios. Those too large to be included in one exposure are filmed in two or more exposures, beginning in the upper left hand corner, left to right and top to bottom, as many frames as required. The following diagrams illustrate the method:



L'exemplaire filmé fut reproduit grâce à la générosité de:

La bibliothèque des Archives nationales du Canada

Les images suivantes ont été reproduites avec le plus grand soin, compte tenu de la condition et de la netteté de l'exemplaire filmé, et en conformité avec les conditions du contrat de filmage.

Les exemplaires originaux dont la couverture en papier est imprimée sont filmés en commençant par le premier plat et en terminant soit par la dernière page qui comporte une empreinte d'impression ou d'illustration, soit par le second plat, selon le cas. Tous les autres exemplaires originaux sont filmés en commençant par la première page qui comporte une empreinte d'impression ou d'illustration et en terminant par la dernière page qui comporte une telle empreinte.

Un des symboles suivants apparaîtra sur la dernière image de chaque microfiche, selon le cas: le symbole \rightarrow signifie "A SUIVRE", le symbole ∇ signifie "FIN".

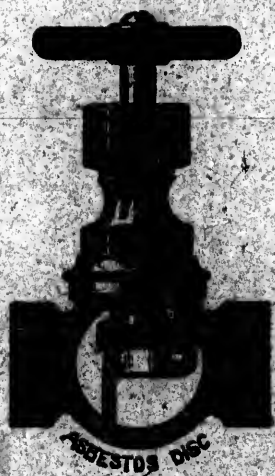
Les cartes, planches, tableaux, etc., peuvent être filmés à des taux de réduction différents. Lorsque le document est trop grand pour être reproduit en un seul cliché, il est filmé à partir de l'angle supérieur gauche, de gauche à droite, et de haut en bas, en prenant le nombre d'images nécessaire. Les diagrammes suivants illustrent la méthode.

STEAM SPECIALTIES.



STANDARD VALVES,
STANDARD COCKS,
STANDARD CHECKS,
STANDARD PACKING.

RICE LEWIS & SON, Ltd.
Hardware Merchants,
TORONTO.



BRASS

BRASS

BRASS
BR

BRASS
I

IRON

IRON
I

IRON C
IRO

IRON C
IRO

IRON C

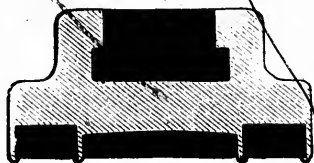
VULCAN

3-30-92-1

STEAM SPECIALTIES.

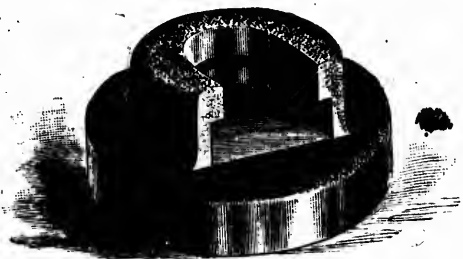
- BRASS GLOBE AND ANGLE VALVES, ASBESTOS DISC.
- BRASS RADIATOR VALVES, ASBESTOS DISC.
- BRASS SAFETY VALVES, ASBESTOS DISC.
- BRASS HOSE VALVES, ASBESTOS DISC.
- BRASS SWINGING CHECK VALVES.
- BRASS LOCOMOTIVE CHECK VALVES.
- BRASS BACK PRESSURE VALVES.
- BRASS SWINGING STOP VALVES.
- BRASS SWINGING LOCK CHECK VALVES.
- BRASS COCKS, ASBESTOS PACKED.
- BRASS COCKS, ASBESTOS PACKED, FOR HOSE.
- BRASS COCKS, ASBESTOS PACKED, FOR LOCOMOTIVE BLOW-OFFS.
- BRASS GAUGE COCKS, ASBESTOS PACKED.
- BRASS GAUGE COCKS, ASBESTOS DISC.
- BRASS GATE VALVES, ASBESTOS SEAT.
- BRASS, ASBESTOS PACKED, WATER GAUGES.
- IRON BODY GLOBE AND ANGLE VALVES, ASBESTOS DISC.
- IRON BODY CROSS VALVES, ASBESTOS DISC.
- IRON BODY SAFETY VALVES, ASBESTOS DISC.
- IRON BODY SWINGING CHECK VALVES.
- IRON BODY SWINGING BACK PRESSURE VALVES.
- IRON BODY SWINGING STOP VALVES.
- IRON BODY SWINGING LOCK CHECK VALVES.
- IRON BODY GATE VALVES, ASBESTOS SEAT.
- IRON COCKS, ASBESTOS PACKED, SCREWED AND FLANGED.
- IRON COCKS, ASBESTOS PACKED, FOR HOSE.
- IRON COCKS, ASBESTOS PACKED, FOR SUPERHEATED STEAM.
- IRON COCKS, ASBESTOS PACKED, FOR AMMONIA.
- IRON COCKS, ASBESTOS PACKED, WITH STOP AND WASTE.
- IRON COCKS, ASBESTOS PACKED, THREE-WAY.
- IRON COCKS, ASBESTOS PACKED, SPECIAL PATTERNS.
- ALL IRON AMMONIA GAUGES, ASBESTOS PACKED.
- VULCABESTON SHEET PACKING, FOR STEAM, &C.
- VULCANIZED ASBESTOS ROPE PACKING.
- HANCOCK INSPIRATORS, STATIONARY AND LOCOMOTIVE PATTERN.

ASBESTOS DISCS.



SECTIONAL VIEW SHOWING ASBESTOS DISC IN HOLDER.

The Vulcanized Asbestos Ring is forced into the holder and the metal spun or turned over the edges of the disc, making a perfect joint.



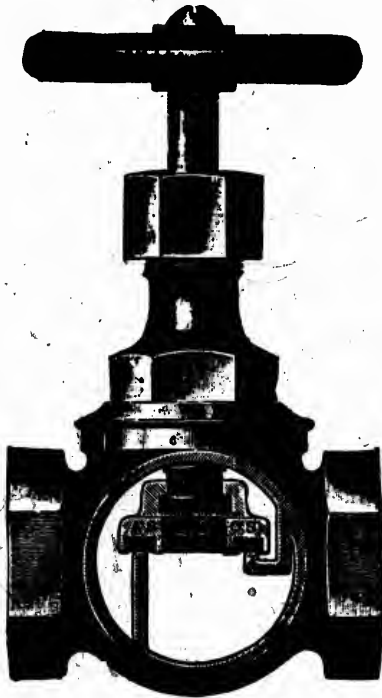
ASBESTOS DISC COMPLETE.

The above is complete and ready for use, requiring no time in changing, as it is slipped on the stem and held central by three guides cast on the body of the valve, doing away with nuts, screws, pins, &c., which are liable to become detached when in use.

GLO

T
posed
The c
mater
T
be pu
the v
screw
the e
T
with
blow
V
good

ASBESTOS DISC BRASS GLOBE, ANGLE AND RADIATOR VALVES.



These valves are provided with Vulcanized Asbestos Discs, composed of the fibre of Asbestos, which cannot be cracked or broken. The disc is practically indestructible, being composed of a fireproof material, to which is added the waterproof vulcanizing material.

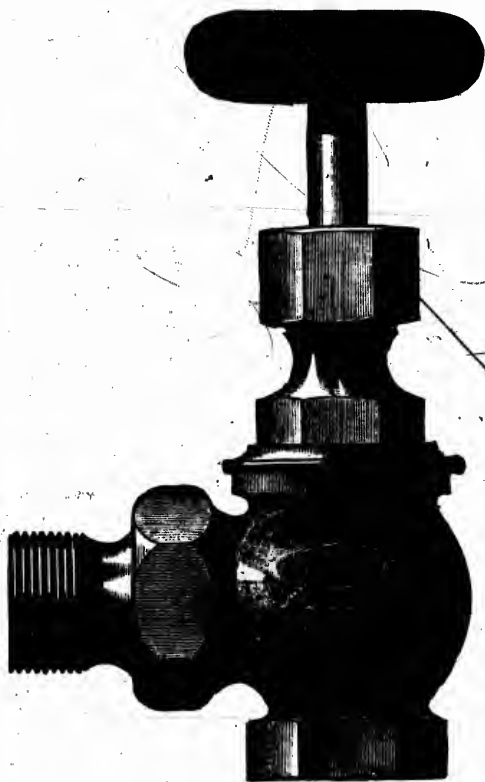
The Discs are furnished all complete and ready for use and may be put into one of these valves by simply unscrewing the bonnet of the valve, slipping off the old disc, replacing it by a new one, and screwing on the bonnet again, requiring only a few moments' time for the entire operation.

The Stuffing Boxes are all packed before they leave the factory with *Vulcanized Asbestos Packing*, which is very durable and cannot be blown or washed out. Only first quality new metal is used.

We invite inspection and trial by all interested in this line of goods. All goods are warranted to give satisfaction.

STEAM SPECIALTIES.

**ASBESTOS DISC BRASS RADIATOR
VALVES.**



We make the following styles: Wood Wheel, Tee Handle, with Lock Shield and with square for key. Right Hand Threads and Male Union, furnished unless otherwise ordered.



RADIATOR
Sizes $\frac{1}{2}$ to



CORNER VA
Sizes $\frac{1}{2}$ to

TOR

ASBESTOS DISC VALVES.



RADIATOR VALVES.
Sizes $\frac{1}{2}$ to 2 in.



CROSS VALVES.
Sizes $\frac{1}{4}$ to 3 in.



RADIATOR VALVES.
Sizes $\frac{1}{4}$ to 2 in.



CORNER VALVES.
Sizes $\frac{1}{4}$ to $1\frac{1}{2}$ in.



OPPOSITE
ANGLE VALVES.
Sizes $\frac{1}{4}$ to $1\frac{1}{2}$ in.



CORNER VALVES WITH
UNION.
Sizes $\frac{1}{4}$ to $1\frac{1}{2}$ in.

Wheel,
square
Union.

ASBESTOS DISC IRON BODY GLOBE
AND ANGLE VALVES.



SCREWED AND FLANGED.

Sizes 2 to 12 in.

ASBESTOS
AND

IRON BODY
BRASS
SCREWED AND
SIZES

IRON BODY
WITH
SCREWED AND
SIZES 2

**ASBESTOS DISC IRON BODY GLOBE,
ANGLE AND CROSS VALVES.**



**IRON BODY ANGLE VALVE,
BRASS HUB,
SCREWED AND FLANGED.
Sizes 1 to 4 in.**



**IRON BODY GLOBE VALVES,
BRASS HUB,
SCREWED AND FLANGED.
Sizes 1 to 4 in.**



**IRON BODY GLOBE VALVES
WITH YOKE,
SCREWED AND FLANGED.
Sizes 2 to 12 in.**



**IRON BODY CROSS VALVES
WITH YOKE,
SCREWED AND FLANGED.
Sizes 2 to 12 in.**

ASBESTOS PACKED COCKS.

BRASS AND IRON, ALL SIZES.

The illustration represents one of our Asbestos Packed Cocks, the side of body cut away to show how the packing is arranged. As the plug comes in contact ONLY with VULCANIZED ASBESTOS, it never cuts, grinds or sticks, as is the case with ordinary cocks.

The plug does not come in contact with metal at any point. This Cock always opens and closes easily and remains ABSOLUTELY TIGHT where all other Valves or Cocks will leak.

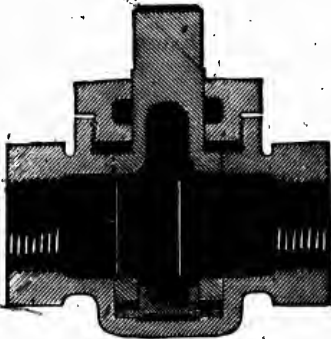
They are recommended for Steam, Oil, Gas, Ammonia in all its forms, Chemicals, Boiler Blow-offs, or where a vacuum is required, and ALL DIFFICULT PLACES.

Special Cocks are made and tested to 2,000 lbs. pressure.

We also make Cocks to stand 1,000 degrees of superheated steam, Gland End Cocks for Ice Machines and all other difficult places. Either Screw or Flange ends as required.

ALL GOODS WARRANTED TO GIVE SATISFACTION.

ASBESTOS PACKED COCKS.



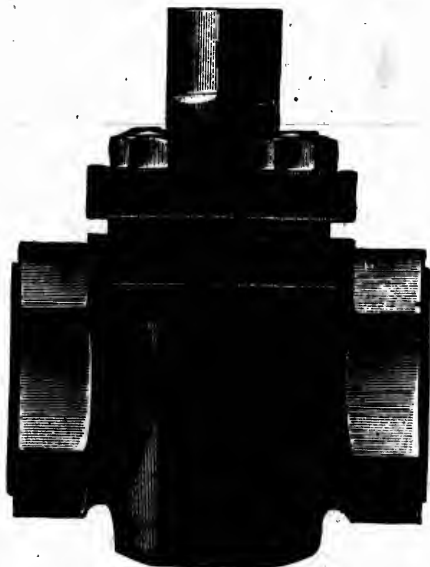
SECTIONAL VIEW, SHOWING THE RING OF ASBESTOS AT THE TOP AND BOTTOM OF PLUG.



SECTIONAL VIEW, SHOWING THE LOCATION OF THE FOUR SLOTS.



CUT AWAY VIEW OF THE ASBESTOS PACKED COCK, SCREWED, FLANGED AND GLAND ENDS. All sizes from $\frac{1}{4}$ to 8 in.

ASBESTOS PACKED COCKS.**THE BEST BOILER BLOW-OFF KNOWN.****SCREWED, FLANGED AND GLAND ENDS.**Sizes $\frac{1}{4}$ to 8 in.

This style of cock has been on the market for the last five years, in which time there has been sold many thousand, and is being successfully used by many who found it impossible to use the ordinary cocks or globe valves.

The non-rusting of the plug, together with the manner of packing the barrel or body of the cock, renders it the best shut-off ever used on steam, water, gas, oil, air, ammonia, etc.

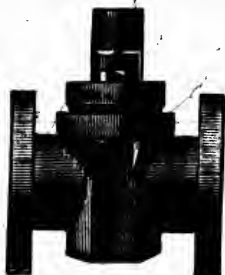
ASBESTOS PACKED IRON COCKS.



REGULAR A. P. IRON
COCK, SOREWED.
Sizes $\frac{1}{4}$ to 6 in.



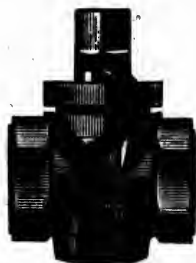
IRON ANGLE COCK,
SCREWED AND
FLANGED.
All Sizes to Order.



REGULAR A. P. IRON
COCK, FLANGED.
Sizes 1 to 6 in.



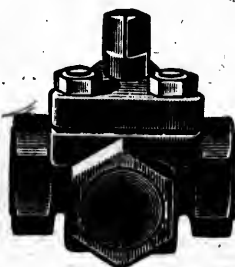
IRON AMMONIA COCK, A. P., GLAND END.—Sizes $\frac{1}{4}$ to 3 in.



IRON STOP AND
WASTE COCK, A. P.,
SCREWED.
Sizes $\frac{1}{4}$ to 3 in.

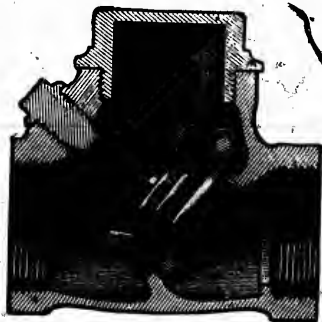


IRON A. P. COCK,
WITH WORM AND GEAR.
Sizes 2 to 8 in.



THREE-WAY COCK,
"A" and "B" PATTERN.
All Sizes to Order.

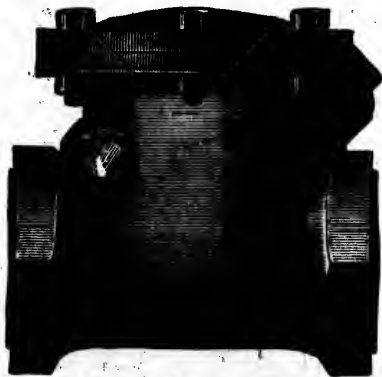
BRASS STRAIGHTWAY SWINGING CHECK VALVES.



Sizes $\frac{1}{4}$ to 3 in.

The only Rotating Disc Swinging Check Valve on the market.
A tighter seat with a clearer way than any other Check Valve.

IRON BODY STRAIGHTWAY SWING- ING CHECK VALVES.



FLANGED, SCREWED AND BELL ENDS.

Sizes 2 to 16 in.

Brass, Leather or Asbestos Disc, as required.

STRA



BRASS
CHECK
SIZES



IRON
STRA
CHECK
SIZES



BELL
SIZES

NGING

STRAIGHTWAY SWINGING VALVES



**BRASS ANGLE
CHECK VALVE.**
Sizes $\frac{1}{4}$ to 2 in.



**IRON AMMONIA
CHECK VALVE,
SCREWED END.**
Sizes $\frac{1}{4}$ to 3 in.



**BRASS
STRAIGHTWAY
CHECK VALVE.**
Sizes $\frac{1}{4}$ to 3 in.

he market.
eck Valve.

WING-



**IRON BODY
STRAIGHTWAY
CHECK VALVE.**
Sizes 2 to 16 in.



**IRON BODY
ANGLE CHECK VALVE.**
All Sizes to Order.



**IRON BODY
SWINGING BACK
PRESSURE VALVE.**
Sizes 2 to 10 in.

d.

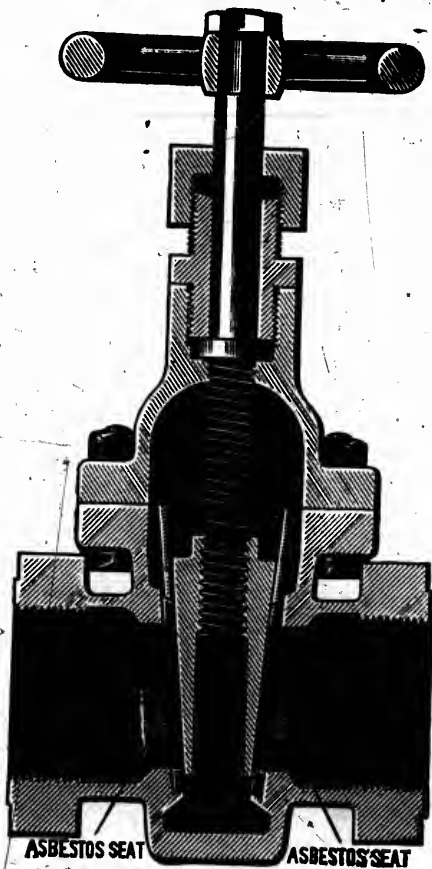


**IRON BODY
BELL END CHECK VALVE.**
Sizes 2 to 12 in.



**IRON
AMMONIA CHECK VALVE,
GLAND END.**
Sizes $\frac{1}{4}$ to 3 in.

**RENEWABLE
ASBESTOS SEAT GATE VALVES,
FOR STEAM, WATER, GAS, OIL, ETC.**



To renew the seat rings, remove the bonnet and take out the cage, insert new rings, and by so doing you have made the valve as good as when it was new.

W
in o
man
used
aim
stra
coul
are
of th
it ce
side
of a
such
plug
the
turn
can
fast,
The
are
chea
used
Valv
are l
pack
so sh
dle,
teste
press
are i
spinc
by t
unles
rienc
have
Best
of F
Only

THE ONLY RENEWABLE DOUBLE
SEATED GATE VALVE ON THE
MARKET.

WE would respectfully call the attention of the Trade and public generally to the FAIRBANKS IMPROVED ASBESTOS SEAT GATE VALVES. No expense has been spared in obtaining machinery and tools which would enable us to manufacture a standard straightway gate valve. The metals used in their manufacture are of the very best quality, and our aim has been to furnish to valve users a gate valve with a straightway passage, having a full pipe area, and one which could be easily, quickly and cheaply repaired. These valves are heavy, strongly built, having two guides cast on the inside of the body, which fit into grooves in the plug or gate, holding it central and preventing any unequal pressure from either side bending the stem. The plug or gate is cast solid and is of a wedge shape. The angle of the two faces of the plug is such that, in combination with the grooves on the sides of the plug, it moves on the guides in the body of the valve, insuring the lifting of the plug free from the seats with a fractional turn of the spindle. They are double faced and the pressure can be applied to either end. They will not stick or wedge fast, and can be easily opened and closed under pressure. The seat rings are made of Vulcabeston of an even thickness, are held securely in place, and can be easily, quickly and cheaply renewed. This is the same material that has been used so successfully in the celebrated Asbestos Disc Globe Valves and the Asbestos Packed Cocks. The stems or spindles are large in diameter. The packing nuts or stuffing boxes are packed with Vulcabeston Rope Packing. They are heavy, and so shaped that the packing is forced around the stem or spindle, making a perfectly tight joint. All valves are thoroughly tested before leaving the works with steam, and under a water pressure of 800 pounds per square inch. All parts of the valve are interchangeable. All valves are guaranteed. Non-rising spindles furnished unless otherwise ordered. All valves open by turning to the left and close by turning to the right unless otherwise ordered. We are justified, from our experience in this line and the many severe trials and tests we have given to this valve, in making the following claims: *Best of Construction, Perfection of Workmanship, Nicety of Finish, Durability of Use, Simplicity of Repairs, and the Only Double Faced Renewal Seat Gate Valve on the Market.*

SEND FOR CATALOGUE AND PRICE LISTS.

ASBESTOS SEAT GATE VALVES.



BRASS, SCREWED.
Sizes $\frac{1}{2}$ to 4 in.



BRASS, FLANGED
Sizes $\frac{1}{2}$ to 4 in.



BRASS, SCREWED
OR FLANGED.
With
Rising Spindle.
Sizes $\frac{1}{2}$ to 4 in.



ALL IRON.
FOR WATER SERVICE.
All Sizes to Order.



ALL IRON.
FOR AMMONIA.
SCREWED OR GLAND
END.
All Sizes to Order.

ASBESTOS SEAT GATE VALVES.
BRASS.



QUICK OPENING, SCREWED OR FLANGED.
All Sizes to Order.

IRON BODY, WITH SCREWED BONNET.



SCREWED.
Sizes $\frac{1}{2}$ to 4 in.



FLANGED.
Sizes $\frac{1}{2}$ to 4 in.

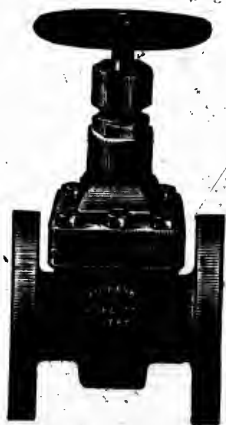
**ASBESTOS SEAT IRON BODY GATE
VALVES, WITH BOLTED BONNET.**



SCREWED.
Sizes 2 to 12 in.

**NO STICKING
OR
WEDGING FAST.**

**BARRFED PLUGS
OR
GATES.**



FLANGED.
Sizes 2 to 12 in.

ASBESTOS SEAT IRON BODY GATE
VALVES, BELL OR SPIGOT ENDS.



BELL END.
Sizes 2 to 12 in.

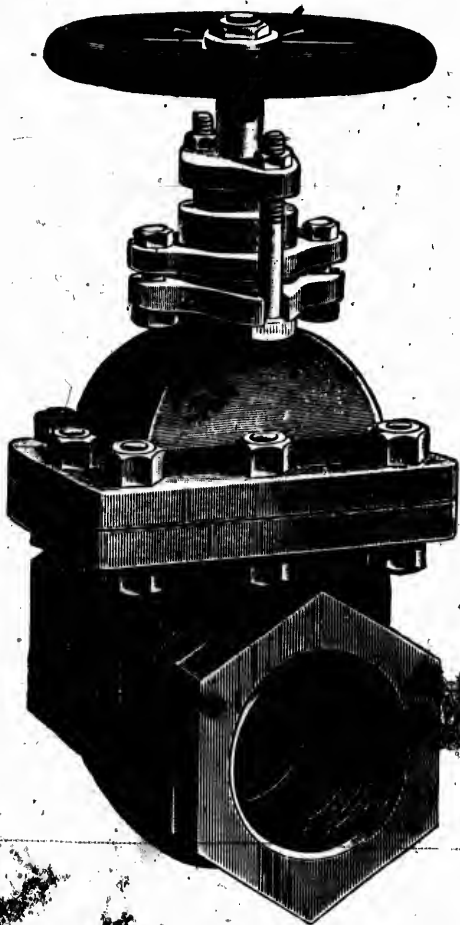
SEATS QUICKLY
RENEWED.

ALL VALVES
TESTED.



SPIGOT END.
Sizes 2 to 12 in.

ASBESTOS SEAT GATE VALVES.



IRON BODY, SOREWED AND FLANGED.
Sizes 2 to 12 inches.

ST

STRAI

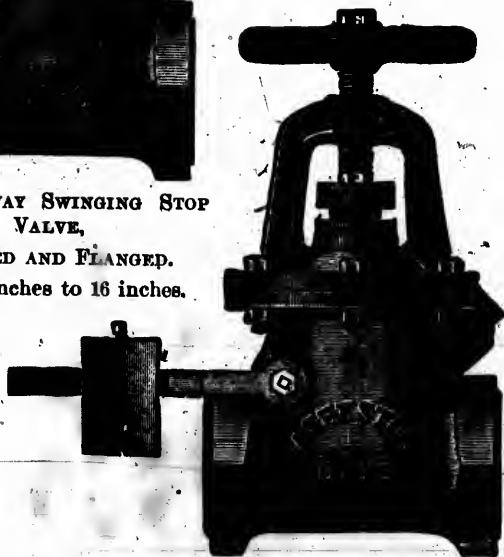
SC
Size

VES.

**IRON BODY
STRAIGHTWAY SWINGING VALVES.**



**STRAIGHTWAY SWINGING STOP
VALVE,
SCREWED AND FLANGED.
Sizes 2 inches to 16 inches.**



**LOOK CHECK VALVES, BALANCED DISC.
Sizes 2 to 12 inches.**



THE HANCOCK INSPIRATOR.

STATIONARY PATTERN.

No. of Inspirator.	Suction and Feed Pipe.	Steam Pipe.	Gallons per Hour, 60 lbs. Pressure.	Horse Power.	Price.
7½	¾	¾	60	8	\$16.00
8¾	1½	¾	90	12	18.00
10	1½	¾	120	16	20.00
12½	¾	1½	220	30	25.00
15	¾	1½	300	40	30.00
17½	1	¾	420	56	40.00
20	1	¾	540	72	45.00
22½	1¼	1	720	96	55.00
25	1¼	1	900	120	60.00
30	1½	1¼	1,260	168	75.00
35	1½	1¼	1,740	230	90.00
40	2	1½	2,230	298	110.00
45	2	1½	2,820	376	125.00
50	2½	2	3,480	464	150.00
55	2½	2	3,650	600	175.00

The capacity of these machines is estimated with a 4 feet lift and 60 pounds steam. With a greater lift the capacity will be proportionately reduced.

**THE HANCOCK
INSPIRATOR.**

LOCOMOTIVE PATTERN.



CONNECTIONS 3/4 INCH ALL AROUND.

No. 10,	} Suitable for Narrow Gauge and Elevated Railroads.	} \$30.00
No. 12 1/4,		
No. 15,		
		35.00

STEAM, 3/4 INCH ; SUCTION AND FEED, 1 INCH.

No. 17 1/2,	40.00
No. 20, 12 inch to 14 inch cylinder.....	50.00

STEAM AND FEED, 1 1/4 INCH ; SUCTION, 1 1/2 INCH.

No. 22 1/4, 13 inch to 14 inch cylinder.....	65.00
No. 25, 14 " cylinder.....	70.00
No. 27 1/4, 15 " "	75.00
No. 30, 16 " "	85.00
No. 32 1/4, 16 " to 17 inch cylinder.....	90.00

STEAM, 1 1/4 INCH ; SUCTION AND FEED, 1 1/2 INCH.

No. 35, 17 inch to 18 inch cylinder.....	100.00
No. 37 1/4, 18 " cylinder.....	110.00
No. 40, 18 " to 20 inch cylinder.....	120.00

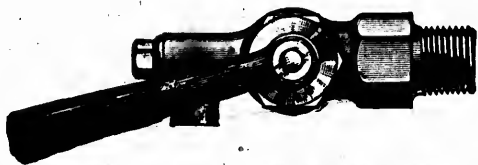
STEAM AND FEED, 1 1/2 INCH ; SUCTION, 2 INCHES.

No. 42 1/4, 18 to 20 inch cylinder.....	140.00
No. 45, 18 to 20 " "	150.00
No. 47 1/4, 18 to 20 " "	155.00
No. 50, 18 to 20 " "	160.00

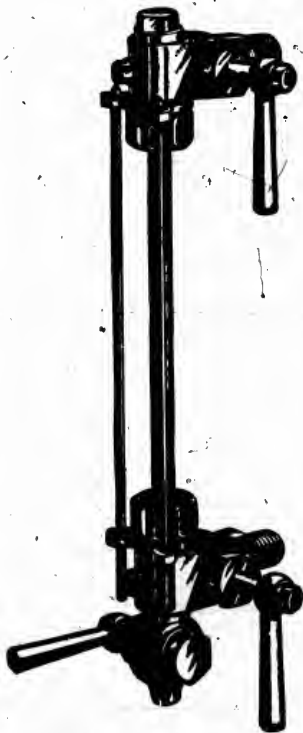
Price.

- \$16.00
- 18.00
- 20.00
- 25.00
- 30.00
- 40.00
- 45.00
- 55.00
- 60.00
- 75.00
- 90.00
- 110.00
- 125.00
- 150.00
- 175.00

a 4 feet
capacity



BRASS GAUGE COCKS, ASBESTOS PACKED.
 Sizes $\frac{1}{4}$ and $\frac{1}{2}$ in.



BRASS WATER GAUGES,
 ASBESTOS PACKED.
 All Sizes.



IRON AMMONIA GAUGES,
 ASBESTOS PACKED.
 All Sizes.

IRON COCKS, ASBESTOS PACKED, SCREWED, FLANGED AND GLAND ENDS.

SIZES. . In.. $\frac{1}{4}$ | $\frac{3}{8}$ | $\frac{1}{2}$ | $\frac{3}{4}$ | 1 | 1 $\frac{1}{4}$ | 1 $\frac{1}{2}$ | 2 | 2 $\frac{1}{2}$ | 3 | 3 $\frac{1}{2}$ | 4 | 5 | 6

IRON COCKS, ASBESTOS PACKED, SCREWED, FLANGED AND GLAND ENDS.

SIZES, . In.,	1/4	3/8	1/2	5/8	3/4	1	1 1/4	1 1/2	2	2 1/2	3	3 1/2	4	5	6
Regular, Sc. & Flgd.,	\$1.80	1.45	1.60	2.10	2.50	3.50	4.75	7.00	12.00	18.00	27.00	30.00	30.00	45.00	60.00
Stop & W'sts, Sc. & Fl.,	1.80	1.45	1.60	2.10	2.50	3.50	4.75	7.00	12.00	18.00	27.00	30.00	30.00	45.00	60.00
Ex. Heavy, Sc. & Fl.,	1.45	1.60	2.10	2.50	3.50	4.75	7.00	12.00	18.00	27.00	30.00	30.00	45.00	60.00	75.00
For Superheated Steam, Sc. & Fl., With Worm & Gear, Sc. and Flgd.,	1.45	1.60	2.10	2.50	3.50	4.75	7.00	12.00	18.00	27.00	30.00	30.00	45.00	60.00	75.00
For Ammonia, Sc.,	1.80	1.45	1.60	2.10	2.50	3.50	4.75	7.00	12.00	18.00	27.00	30.00	30.00	45.00	60.00
For Ammonia Gland,	1.45	1.60	2.10	2.50	3.50	4.75	7.00	12.00	18.00	27.00	30.00	30.00	45.00	60.00	75.00
Thres-Way Cocks,	3.00	3.25	3.75	5.25	7.25	10.00	18.00	25.00	30.00	35.00	50.00	50.00	50.00	50.00	50.00
"A & B" Pat., Sc.,	2.00	2.25	2.50	3.15	4.20	6.00	7.75	12.00	20.00	28.00	35.00	35.00	35.00	35.00	35.00
Brass Cocks, Sc.,	2.00	2.25	2.50	3.15	4.20	6.00	7.75	12.00	20.00	28.00	35.00	35.00	35.00	35.00	35.00
Iron Cock Wrenches,	.10	.10	.10	.20	.20	.30	.40	.50	1.00	1.50	1.60	1.75	1.75	1.75	1.75

BRASS AND IRON BODY ASBESTOS DISC GLOBE AND ANGLE VALVES.

SIZES, . . . Inches,	1/4	1/2	3/4	1	1 1/4	1 1/2	2	2 1/2	3
Globe and Angle Valves, Brass,	\$1.10	1.25	1.60	2.20	2.80	4.00	5.50	8.00	15.75
Patent Asbestos Discs,06	.07	.09	.10	.12	.18	.25	.36	.48
SIZES, . . . Inches,	2	2 1/2	3	3 1/2	4	5	6	7	8
Globe & Angle Valves, I. B., Brass Hub, Sc.,	\$7.25	11.00	16.00	16.00	16.00	16.00	16.00	16.00	16.00
Globe & Angle Valves, I. B., Br. Hub, Flgd.,	8.50	13.00	18.00	18.00	18.00	18.00	18.00	18.00	18.00
Globe & Angle Valves, I. B., Sc., with Yoke,	10.00	12.00	16.75	19.50	24.00	40.00	48.00	80.00	90.00
Globe & Angle Valves, I. B., Fl., with Yoke,	11.75	14.00	18.50	21.50	26.00	42.00	50.00	80.00	90.00
Patent Asbestos Discs,36	.48	.60	.75	.90	1.20	1.50	1.80	2.40

ASBESTOS DISC RADIATOR VALVES.

No. 1 PATTERN.	SIZES.				
		¾	1	1¼	1½
W. W. Rough Body, Finished Trimmings,	• • • • •	\$2.00	2.50	3.20	4.50
W. W. Rough Body, Plated Trimmings,	• • • • •	2.25	2.70	3.50	4.75
W. W. Rough Body, Plated all over,	• • • • •	2.50	2.85	3.65	4.90
W. W. Finished all over,	• • • • •	2.50	3.00	3.75	5.25
W. W. Finished and Plated all over,	• • • • •	2.75	3.10	4.00	5.40
W. W. Rough Body, Finished Trimmings,	• • • • •	2.75	3.50	4.30	5.85
W. W. Rough Body, Plated Trimmings,	• • • • •	3.00	3.75	4.65	6.25
W. W. Rough Body, Plated all over,	• • • • •	3.20	3.80	4.75	6.40
W. W. Finished all over,	• • • • •	3.20	4.00	4.80	6.40
W. W. Finished and Plated all over,	• • • • •	3.25	4.25	5.25	7.00

MALE
OR FEMALE
UNION.

ASBESTOS DISC RADIATOR VALVES.

No. XL. PATTERN.	SIZES.				
		¾	1	1¼	1½
W. W. Rough Body, Finished Trimmings,	• • • • •	\$1.65	1.95	2.65	3.85
W. W. Rough Body, Plated Trimmings,	• • • • •	1.85	2.20	2.80	4.20
W. W. Rough Body, Plated all over,	• • • • •	1.95	2.30	3.05	4.30
W. W. Finished all over,	• • • • •	2.15	2.55	3.25	4.60
W. W. Finished and Plated all over,	• • • • •	2.45	2.85	3.65	5.05
W. W. Rough Body, Finished Trimmings,	• • • • •	2.35	2.80	3.65	5.10
W. W. Rough Body, Plated Trimmings,	• • • • •	2.50	2.95	3.75	5.50
W. W. Rough Body, Plated all over,	• • • • •	2.40	3.20	4.10	5.65
W. W. Finished all over,	• • • • •	2.85	3.35	4.25	5.85
W. W. Finished and Plated all over,	• • • • •	3.20	3.75	4.70	6.40

MALE
OR FEMALE
UNION.

ASBESTOS DISC BRASS CORNER VALVES.

W. W. Finished all over,	2.85	3.85	4.70	5.00	5.85	6.40
W. W. Finished and Plated all over,	3.20	3.75	4.70	5.00	5.85	6.40

ASBESTOS DISC BRASS CORNER VALVES.

SIZES,	1/2	3/4	1	1 1/4	1 1/2
W. W. Rough Body, Finished Trimmings,	\$2.25	2.75	3.50	5.00	7.00
W. W. Rough Body, Plated Trimmings,	2.50	3.00	3.75	5.25	7.25
W. W. Rough Body, Plated all over,	2.75	3.25	4.00	5.50	7.50
W. W. Finished all over,	2.75	3.50	4.25	5.80	8.25
W. W. Finished and Plated all over,	3.25	3.75	4.75	6.25	8.50
W. W. Rough Body, Finished Trimmings,	3.00	3.75	4.60	6.35	8.50
W. W. Rough Body, Plated Trimmings,	3.25	4.00	4.90	6.75	8.75
W. W. Rough Body, Plated all over,	3.50	4.25	5.10	7.00	9.25
W. W. Finished all over,	3.50	4.50	5.30	7.15	9.75
W. W. Finished and Plated all over,	4.00	4.90	6.00	7.85	10.00

MALE
OR FEMALE
UNION.

These Valves are made right or left hand, with right and left hand threads and male or female union.

ASBESTOS DISC BRASS OPPOSITE ANGLE VALVES.

SIZES,	1/2	3/4	1	1 1/4	1 1/2
W. W. Rough Body, Finished Trimmings,	\$2.25	2.75	3.50	5.00	7.00
W. W. Rough Body, Plated Trimmings,	2.50	3.00	3.75	5.25	7.25
W. W. Rough Body, Plated all over,	2.75	3.25	4.00	5.50	7.50
W. W. Finished all over,	2.75	3.50	4.25	5.80	8.25
W. W. Finished and Plated all over,	3.25	3.75	4.75	6.25	8.50

BRASS ASBESTOS PACKED GAUGE COCKS.

Size, 1/2 in., \$4.50 each, | Size, 3/4 in., \$4.50 each.

BRASS ASBESTOS PACKED WATER GAUGES.

No. 1, 1/2 in. I. P., 3/4 in. Glass, \$18.00 | No. 3, 3/4 in. I. P., 3/4 in. Glass, \$18.00
 No. 2, 3/4 in. I. P., 3/4 in. Glass, 18.00 | No. 4, 1 in. I. P., 3/4 in. Glass, 18.00

The above prices do not include gages, which are not furnished unless so ordered.

BRASS STRAIGHTWAY, SWINGING, CHECK, STOP, BACK PRESSURE AND LOCK CHECK VALVES.

	SIZES,									
	1/4	3/8	1/2	3/4	1	1 1/4	1 1/2	2	2 1/2	3
Brass Check Valves,										
Brass Check Valves, Angle;	\$1.25	1.25	1.30	1.75	2.25	3.25	4.25	6.25	11.50	16.00
Brass Stop Valves,										
Brass Back Pressure Valves,	1.25	1.25	1.30	1.75	2.25	3.25	4.25	6.25	11.50	16.00
Brass Lock Check Valves,	1.25	1.25	1.30	1.75	2.25	3.25	4.25	6.25	11.50	16.00

IRON BODY STRAIGHTWAY, SWINGING, CHECK AND BACK PRESSURE VALVES.

	SIZES,												
	2	2 1/2	3	3 1/2	4	5	6	7	8	10	12	14	16
L. B. Check Valves, Fl.,													
Sc. and Bell Ends, }	\$6.25	10.00	12.00	16.00	18.00	25.00	32.00	41.00	50.00	65.00	95.00
L. B. Back Pressure													
Valves, Sc. and Fl., }	6.25	10.00	12.00	16.00	18.00	25.00	32.00	41.00	50.00	65.00	95.00

IRON BODY STOP AND LOCK CHECK VALVES.

	SIZES,											
	2	2 1/2	3	3 1/2	4	5	6	7	8	10	12	
L. B. Stop, Screwed and Flanged,												
L. B. Lock Check, Sc. and Fl.,												
L. B. Lock Check, Balanced Disc,	\$8.00	12.00	14.50	18.00	21.00	32.00	40.00	50.00	62.00	75.00	110.00	
Screwed or Flanged,												

ASBESTOS SEAT BRASS GATE VALVES, SCREWED AND FLANGED.

I. B. Lock Check, Balanced Disc, Screwed or Flanged.	\$8.00	12.00	14.50	18.00	21.00	32.00	40.00	50.00	62.00	75.00	110.00
---	--------	-------	-------	-------	-------	-------	-------	-------	-------	-------	--------

ASBESTOS SEAT BRASS GATE VALVES, SCREWED AND FLANGED.

Sizes,	Inches,	%	1/8	1/4	3/8	1	1 1/4	1 1/2	2	2 1/2	3
Screwed,		\$1.25	1.60	2.20	2.80	4.00	5.50	8.00	8.00	15.75	22.00
Flanged,		5.00	6.00	9.00	11.00	16.50	16.50	25.00	34.00
Seat Ring,	18	.20	.24	.36	.50	.72	.72	.96	1.20

ASBESTOS SEAT IRON BODY GATE VALVES, WITH SCREWED BONNET.

Sizes,	Inches,	1/2	3/4	1	1 1/4	1 1/2	2	2 1/2	3	3 1/2	4
Screwed,		\$1.60	2.20	2.80	4.00	5.50	8.00	12.00	15.00	18.00	21.00
Flanged,		1.85	2.50	3.25	4.50	6.00	8.00	12.00	15.00	18.00	21.00
Seat Ring,		.18	.20	.24	.36	.50	.72	.96	1.20	1.50	1.80

ASBESTOS SEAT IRON BODY GATE VALVES, WITH BOLTED BONNET.

Sizes, In.,	2	2 1/2	3	3 1/2	4	4 1/2	5	6	7	8	10	12
Screwed,	\$8.00	12.00	15.00	18.00	21.00	25.00	30.00	36.00	50.00	62.00	85.00	120.00
Flanged,	8.00	12.00	15.00	18.00	21.00	25.00	30.00	36.00	50.00	62.00	85.00	120.00
Seat Ring,	.72	.96	1.20	1.50	1.80	2.00	2.40	3.00	3.60	4.20	5.40	6.00

ASBESTOS SEAT IRON BODY GATE VALVES, WITH BELL ENDS.

Sizes,	Inches,	2	3	4	5	6	8	10	12
Price,		\$8.00	15.00	21.00	30.00	36.00	62.00	85.00	120.00
Seat Ring,		.72	1.20	1.80	2.40	3.00	4.20	5.40	6.00

ALL IRON AMMONIA GAUGES.

$\frac{1}{4}$ in. Pipe, } $\frac{1}{2}$ in. Glass, }	$\frac{1}{4}$ in. Pipe, } $\frac{1}{2}$ in. Glass, }	$\frac{3}{4}$ in. Pipe, } $\frac{1}{2}$ in. Glass, }	$\frac{1}{2}$ in. Pipe, } $\frac{3}{4}$ in. Glass, }	\$16.00	\$16.00	\$16.00	\$16.00
---	---	---	---	---------	---------	---------	---------

VULCANIZED ASBESTOS PACKING.

Wick Packing, 1-16 in. diameter on spools,	Per lb.	1.00
Rope Packing, round or square, all sizes $\frac{1}{8}$ in. to 2 in., on spools or reels,	Per lb.	1.00
Sheet Packing, in sheets 96 x 96 in., hard and medium, 1-16 in. thick and upward,	Per lb.	1.25
Sheet Packing, in sheets 96 x 96 in., hard and medium, 1-32 in. to 1-16 in. thick,	Per lb.	1.25
Sheet Packing, in sheets 96 x 96 in., hard, for electrical purposes, 1-16 in. in thickness and upward,	Per lb.	1.50
Sheet Packing, in sheets 96 x 96 in., hard, for electrical purposes, 1-32 in. to 1-16 in. in thickness,	Per lb.	1.50

MOULDED UNION WASHERS.

SIZES,	In.,	$\frac{1}{4}$	$\frac{3}{8}$	$\frac{1}{2}$	$\frac{3}{4}$	1	1 $\frac{1}{4}$	1 $\frac{1}{2}$	2
Per 100, $\frac{3}{8}$ in.,		\$2.00	2.25	2.50	2.75	3.25	4.00	5.00	5.50
Per 100, $\frac{1}{2}$ in.,		1.50	1.75	2.00	2.25	2.75	3.25	3.75	4.25

MOULDED FAUCET WASHERS.

Per 100, $\frac{3}{8}$ in.,	Per 100, $\frac{1}{2}$ in.,	\$2.00	2.00	2.00	2.00	2.50	2.50
Per 100, $\frac{1}{2}$ in.,	Per 100, $\frac{3}{4}$ in.,	2.00	2.00	2.00	2.00	2.50	2.50

DIMENSIONS OF IRON BODY VALVES.

DIMENSIONS OF IRON BODY VALVES.

SIZES.	2	2½	3	3½	4	5	6	7	8	10	12
Globe Screwed, End to End,	6	7	8½	9½	10½	11½	13½	14½	16½	20	23½
Globe Flanged, Face to Face,	6½	8	8½	10½	10½	12	15½	15½	17	20	23½
Globe Flanged, Size of Flanges,	6½	7	8	9	10	11	12	13	14	16	19
Angle Screwed, Centre to Face,	3	4½	4½	4½	5½	5½	7	7½	8½	10	11½
Angle Flanged, Centre to Face,	4	4½	4½	5½	6	6	7	7½	8½	10	11½
Angle Flanged, Size of Flanges,	6	7	8	9	10	11	12	13	14	16	19
Stop Screwed, End to End,	5½	7	8	9½	10	11	12	13	15	19½	22½
Stop Flanged, Face to Face,	8	8½	8	9½	10½	11½	13½	14½	15	19½	22½
Stop Flanged, Size of Flanges,	6	7	8	9	10	11	12	13	15	19	22½
Check Screwed, End to End,	5	7	7	8½	9	10	11	12	13	16	18
Check Flanged, Face to Face,	8	8½	8	9½	10½	11½	13½	14½	15½	19½	22½
Check Flanged, Size of Flanges,	6	7	7	8½	9	10	11	12	13	16	18

DIMENSIONS OF BRASS AND IRON COCKS.

SIZES.	¼	⅜	½	¾	1	1¼	1½	2	2½	3	4	5	6
Brass Screwed, End to End,	2½	2½	2½	3	4	4½	5	6	7	8	9	10	11
Brass Sc., Top of Plug to Bottom,	3½	3½	3½	4½	5	5½	6	7	8	9	10	11	12
Iron Screwed, End to End,	2½	2½	2½	3	4	4½	5	6	7	8	9	10	11
Iron Sc., Top of Plug to Bottom,	3	3	3	4	5	5½	6	7	8	9	10	11	12
Iron Flanged, Face to Face,	3	3	3	4	5	5½	6	7	8	9	10	11	12
Iron Flgd., Top of Plug to Bottom,	3	3	3	4	5	5½	6	7	8	9	10	11	12
Iron Flanged, Size of Flanges,	3	3	3	4	5	5½	6	7	8	9	10	11	12

Per 100, ¼ in., \$2.00 | Per 100, ½ in., \$2.50
 Per 100, ¾ in., 2.00 | Per 100, 1 in., 2.50

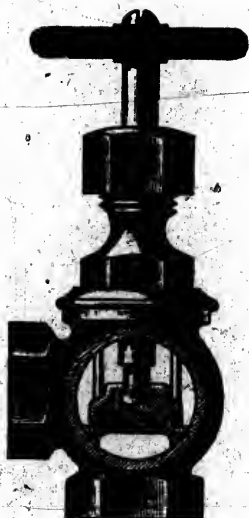
DIMENSIONS OF BRASS AND IRON BODY GATE VALVES.

BRASS GATE VALVES.

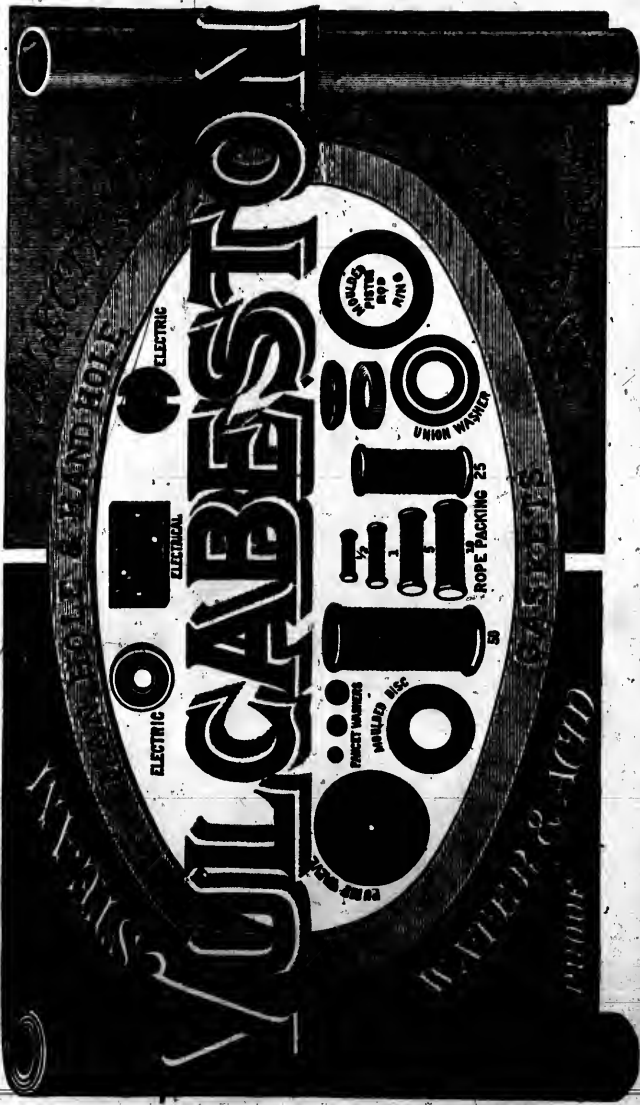
SIZES, Distance E to E, Screwed, Distance F to F, Flanged, Diameter of Flanges,	Inches,									
	1/2	3/4	1	1 1/4	1 1/2	2	2 1/2	3	3 1/2	4
	2 1/8	2 7/8	3 5/8	3 3/4	4 1/8	4 7/8	5 5/8	6 1/2	7 1/2	8 1/2
	2 1/8	3 3/8	3 1/8	4 1/8	4 1/8	5 3/8	6 3/4	7 1/2	8 1/2	9 1/2
	3	3	4	4 1/2	5	6	7	8	8 1/2	9

IRON BODY GATE VALVES

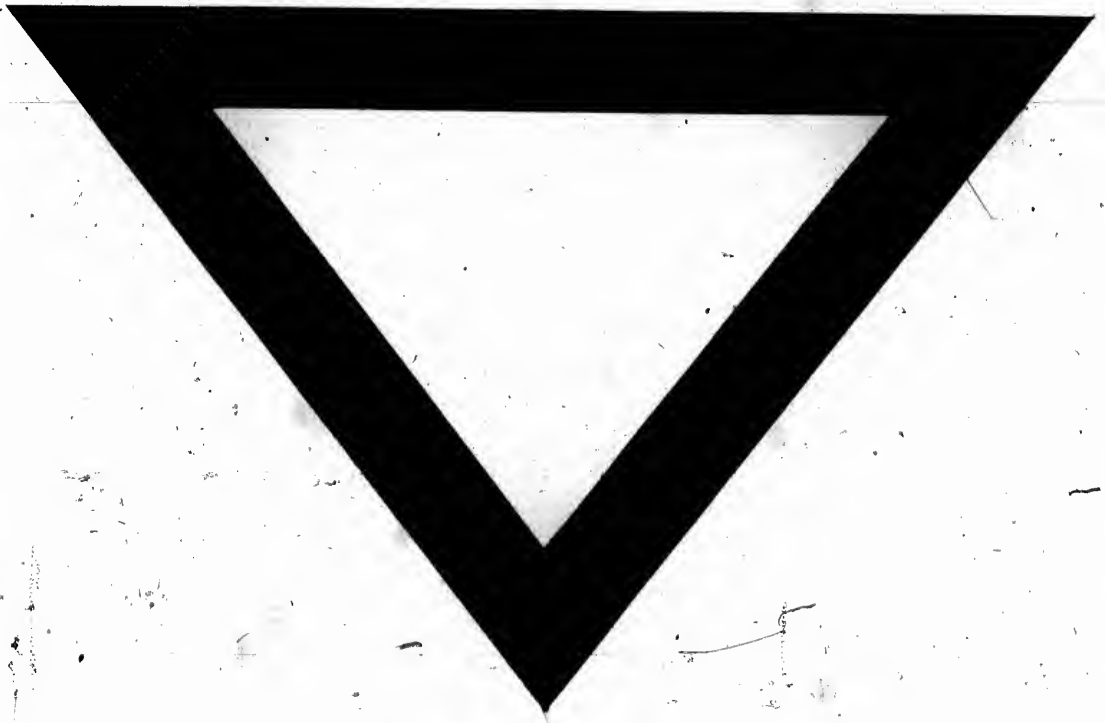
SIZES, Distance E to E, Screwed, Distance F to F, Flanged, Height over all of Station- ary Spindle, all of Rising Spindle, Height over all of Indicator Spindle, Diameter of Flanges,	Inches,																
	2	2 1/2	3	3 1/2	4	4 1/2	5	6	7	8	10	12	14	16	18	20	24
	5 3/4	6 1/2	7 1/2	8 3/8	8 7/8	9 1/2	9 1/2	10	10 1/2	11 1/2	13 1/2	16 1/2	18	19	20	22	24
	7 1/4	7 7/8	8 1/4	8 7/8	9 1/2	10 1/2	10 1/2	10 7/8	11 1/2	12 1/2	13 1/2	16 1/2	18	19	20	22	24
	11 1/8	14 1/2	15 1/2	18	19 3/4	21	23	25 1/4	28 1/4	31 3/8	36 1/4	42 3/8	51 3/8	56	60 1/2	67 1/2	80
	19 3/4	24 3/4	22	29 1/2	25 3/4	35	40	45 1/4	50 3/8	60
	16 3/4	20	21 1/2	22 1/2	25	28 1/2	32 1/2	34 3/8	39 3/8
	6 1/2	7	8	8 1/2	9	9 1/2	10 3/4	12	13	16	18	18	21	23	25	27	31



ASBESTOS DISC



Lockwood Press, 126 & 128 Duane St., cor. Church, New York.





0