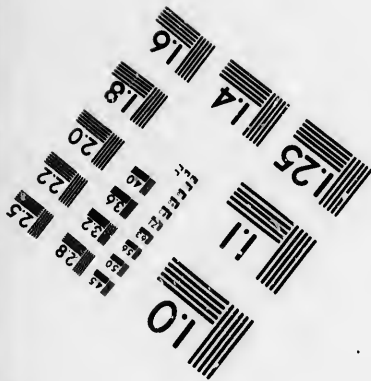
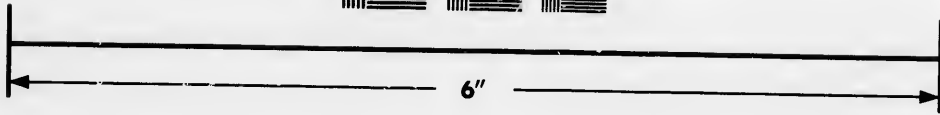
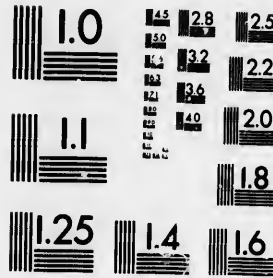


**IMAGE EVALUATION  
TEST TARGET (MT-3)**



**Photographic  
Sciences  
Corporation**

23 WEST MAIN STREET  
WELSTER, N.Y. 14580  
(716) 872-4503

1.6  
1.8  
2.0  
2.2  
2.5  
2.8  
3.2  
3.6  
4.0

**CIHM/ICMH  
Microfiche  
Series.**

**CIHM/ICMH  
Collection de  
microfiches.**



Canadian Institute for Historical Microreproductions / Institut canadien de microreproductions historiques

1.6  
1.8  
2.0  
2.2  
2.5  
2.8  
3.2  
3.6  
4.0

**© 1986**

Technical and Bibliographic Notes/Notes techniques et bibliographiques

The Institute has attempted to obtain the best original copy available for filming. Features of this copy which may be bibliographically unique, which may alter any of the images in the reproduction, or which may significantly change the usual method of filming, are checked below.

L'Institut a microfilmé le meilleur exemplaire qu'il lui a été possible de se procurer. Les détails de cet exemplaire qui sont peut-être uniques du point de vue bibliographique, qui peuvent modifier une image reproduite, ou qui peuvent exiger une modification dans la méthode normale de filmage sont indiqués ci-dessous.

- Coloured covers/  
Couverture de couleur
- Covers damaged/  
Couverture endommagée
- Covers restored and/or laminated/  
Couverture restaurée et/ou pelliculée
- Cover title missing/  
Le titre de couverture manque
- Coloured maps/  
Cartes géographiques en couleur
- Coloured ink (i.e. other than blue or black)/  
Encre de couleur (i.e. autre que bleue ou noire)
- Coloured plates and/or illustrations/  
Planches et/ou illustrations en couleur
- Bound with other material/  
Relié avec d'autres documents
- Tight binding may cause shadows or distortion along interior margin/  
La reliure serrée peut causer de l'ombre ou de la distorsion le long de la marge intérieure
- Blank leaves added during restoration may appear within the text. Whenever possible, these have been omitted from filming/  
Il se peut que certaines pages blanches ajoutées lors d'une restauration apparaissent dans le texte, mais, lorsque cela était possible, ces pages n'ont pas été filmées.

- Coloured pages/  
Pages de couleur
- Pages damaged/  
Pages endommagées
- Pages restored and/or laminated/  
Pages restaurées et/ou pelliculées
- Pages discoloured, stained or foxed/  
Pages décolorées, tachetées ou piquées
- Pages detached/  
Pages détachées
- Showthrough/  
Transparence
- Quality of print varies/  
Qualité inégale de l'impression
- Includes supplementary material/  
Comprend du matériel supplémentaire
- Only edition available/  
Seule édition disponible
- Pages wholly or partially obscured by errata slips, tissues, etc., have been refilmed to ensure the best possible image/  
Les pages totalement ou partiellement obscurcies par un feuillet d'errata, une pelure, etc., ont été filmées à nouveau de façon à obtenir la meilleure image possible.

Additional comments: [Printed ephemera] 1 sheet (verso blank)  
Commentaires supplémentaires:

This item is filmed at the reduction ratio checked below/  
Ce document est filmé au taux de réduction indiqué ci-dessous.

10X	12X	14X	16X	18X	20X	22X	24X	26X	28X	30X	32X
<input type="checkbox"/>	<input type="checkbox"/>	<input type="checkbox"/>	<input type="checkbox"/>	<input type="checkbox"/>	<input type="checkbox"/>	<input type="checkbox"/>	<input type="checkbox"/>	<input type="checkbox"/>	<input type="checkbox"/>	<input type="checkbox"/>	<input checked="" type="checkbox"/>

The copy filmed here has been reproduced thanks to the generosity of:

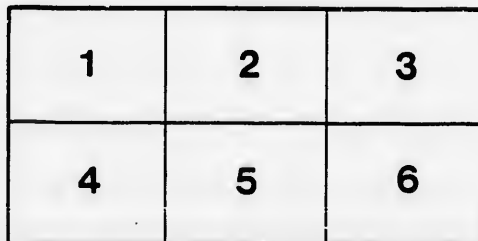
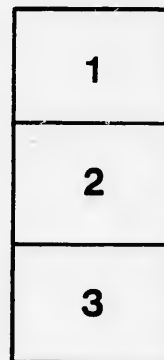
Manuscript Division  
Public Archives of Canada

The images appearing here are the best quality possible considering the condition and legibility of the original copy and in keeping with the filming contract specifications.

Original copies in printed paper covers are filmed beginning with the front cover and ending on the last page with a printed or illustrated impression, or the back cover when appropriate. All other original copies are filmed beginning on the first page with a printed or illustrated impression, and ending on the last page with a printed or illustrated impression.

The last recorded frame on each microfiche shall contain the symbol  $\rightarrow$  (meaning "CONTINUED"), or the symbol  $\nabla$  (meaning "END"), whichever applies.

Maps, plates, charts, etc., may be filmed at different reduction ratios. Those too large to be entirely included in one exposure are filmed beginning in the upper left hand corner, left to right and top to bottom, as many frames as required. The following diagrams illustrate the method:



L'exemplaire filmé fut reproduit grâce à la générosité de:

Division des manuscrits  
Archives publiques du Canada

Les images suivantes ont été reproduites avec le plus grand soin, compte tenu de la condition et de la netteté de l'exemplaire filmé, et en conformité avec les conditions du contrat de filmage.

Les exemplaires originaux dont la couverture en papier est imprimée sont filmés en commençant par le premier plat et en terminant soit par la dernière page qui comporte une empreinte d'impression ou d'illustration, soit par le second plat, selon le cas. Tous les autres exemplaires originaux sont filmés en commençant par la première page qui comporte une empreinte d'impression ou d'illustration et en terminant par la dernière page qui comporte une telle empreinte.

Un des symboles suivants apparaîtra sur la dernière image de chaque microfiche, selon le cas: le symbole  $\rightarrow$  signifie "A SUIVRE", le symbole  $\nabla$  signifie "FIN".

Les cartes, planches, tableaux, etc., pouvant être filmés à des taux de réduction différents. Lorsque le document est trop grand pour être reproduit en un seul cliché, il est filmé à partir de l'angle supérieur gauche, de gauche à droite, et de haut en bas, en prenant le nombre d'images nécessaire. Les diagrammes suivants illustrent la méthode.



# PROCLAMATION

## NORTH RIDING, CO.

TOWN

NOTICE IS HEREBY GIVEN

### ELECTORS OF THE

OF THE COUNTY

That in obedience to HER MAJESTY'S WRIT to me directed  
year of our Lord one thousand eight hundred and sixty-one

I require the presence of the said ELECTORS at the Vi

On SATURDAY the Twenty-ninth Day

At the hour of Twelve O'clock Noon for the purpose of E

**NOTIFICATION!**

**COUNTY OF YORK.**

**Notice:**

**HEREBY GIVEN TO THE**

**THE NORTH RIDING**

**COUNTY OF YORK**

to me directed, and bearing date the Tenth day of June in the  
and sixty-one (1861.)

at the *Village of* **NEWMARKET**, in the said *North Riding*,

**on the Tenth Day of the Month of June Instant,**

for the purpose of Electing a person to represent them in the LEGIS-

That in obedience to HER MAJESTY'S WRIT to me directed  
year of our Lord one thousand eight hundred and sixty-one (1861)

I require the presence of the said ELECTORS at the Village

# On SATURDAY the Twenty-ninth Day

At the hour of Twelve O'clock Noon, for the purpose of ELECTORAL ASSEMBLY of this Province, and that in case a Poll be desired, a Poll will be opened on MONDAY the Eighth day of July next

respectively, viz:

- For the Township of Georgina, at Park's School House.
- " " North Gwillimbury, at Steam Mill.
- " " East Gwillimbury, at Town Hall.
- " " King, at School House, west of
- " " Whitby, at Andrew's.
- " Municipality of Newmarket, at the Court House.
- " " Holland Landing, at Holland

All of which every person is hereby required to take notice and comply with.  
Given under my hand, at the City of Toronto, this nineteenth day of July 1861.  
Eight Hundred and Sixty-one.

**FREDERICK**

*Declaration 11 July 1861 at New Market at 12 O'clock*

**God save the**

to me directed, and bearing date the tenth day of June in the  
sixty-one (1861.)

at the *Village of NEWMARKET*, in the said *North Riding*,

**on the Day of the Month of June Instant,**

in pursuance of the Statute in that behalf made, touching the  
mode of Electing a person to represent them in the LEGIS-  
lative Council, to be demanded, and allowed in the manner by law prescribed, such  
of July next, in each of the following Townships and Municipalities

School House, Lot 12, in the 7th Concession.

St. James's Court House.

Town Hall, *St. James's*.

St. James's, Lot 7, 6th Concession.

St. James's.

St. James's.

St. James's.

and *St. James's* accordingly.

the tenth day of the month of June, in the year of our Lord, One thousand

**FREDERICK WILLIAM JARVIS,**

*at 12 Belvidere Row*

**SHERIFF,**

**RETURNING OFFICER.**

**By the Queen's**



