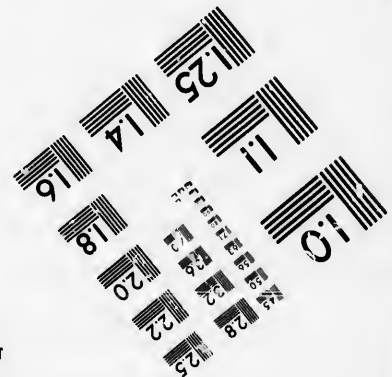
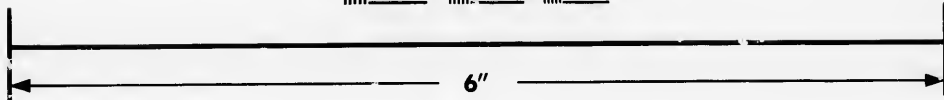
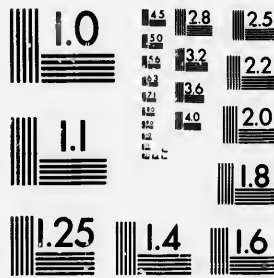


**IMAGE EVALUATION
TEST TARGET (MT-3)**



**Photographic
Sciences
Corporation**

23 WEST MAIN STREET
WEBSTER, N.Y. 14580
(716) 872-4503



**CIHM/ICMH
Microfiche
Series.**

**CIHM/ICMH
Collection de
microfiches.**



Canadian Institute for Historical Microreproductions / Institut canadien de microreproductions historiques



© 1985

plaire
es détails
iques du
ent modifier
xiger une
de filmage

The copy filmed here has been reproduced thanks to the generosity of:

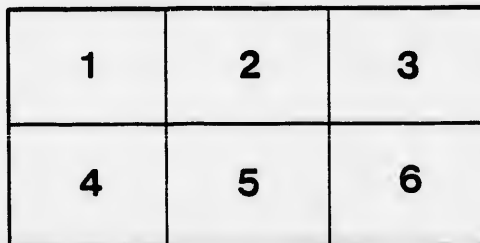
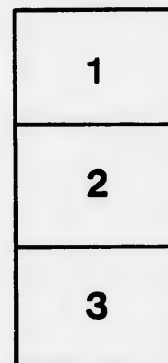
D. B. Weldon Library
University of Western Ontario
(Regional History Room)

The images appearing here are the best quality possible considering the condition and legibility of the original copy and in keeping with the filming contract specifications.

Original copies in printed paper covers are filmed beginning with the front cover and ending on the last page with a printed or illustrated impression, or the back cover when appropriate. All other original copies are filmed beginning on the first page with a printed or illustrated impression, and ending on the last page with a printed or illustrated impression.

The last recorded frame on each microfiche shall contain the symbol \rightarrow (meaning "CONTINUED"), or the symbol ∇ (meaning "END"), whichever applies.

Maps, plates, charts, etc., may be filmed at different reduction ratios. Those too large to be entirely included in one exposure are filmed beginning in the upper left hand corner, left to right and top to bottom, as many frames as required. The following diagrams illustrate the method:



taire

d by errata
med to

ment
une pelure,
façon à
e.



32X

L'exemplaire filmé fut reproduit grâce à la générosité de:

D. B. Weldon Library
University of Western Ontario
(Regional History Room)

Les images suivantes ont été reproduites avec plus grand soin, compte tenu de la condition de la netteté de l'exemplaire filmé, et en conformité avec les conditions du contrat de filmage.

Les exemplaires originaux dont la couverture en papier est imprimée sont filmés en commençant par le premier plat et en terminant soit par la dernière page qui comporte une empreinte d'impression ou d'illustration, soit par le second plat, selon le cas. Tous les autres exemplaires originaux sont filmés en commençant par la première page qui comporte une empreinte d'impression ou d'illustration et en terminant par la dernière page qui comporte une telle empreinte.

Un des symboles suivants apparaîtra sur la dernière image de chaque microfiche, selon le cas: le symbole \rightarrow signifie "A SUIVRE", le symbole ∇ signifie "FIN".

Les cartes, planches, tableaux, etc., peuvent être filmés à des taux de réduction différents. Lorsque le document est trop grand pour être reproduit en un seul cliché, il est filmé à partir de l'angle supérieur gauche, de gauche à droite et de haut en bas, en prenant le nombre d'images nécessaire. Les diagrammes suivants illustrent la méthode.

reproduit grâce à la

ary
tern Ontario
Room)

ont été reproduites avec le
te tenu de la condition et
plaire filmé, et en
onditions du contrat de

aux dont la couverture en
ont filmés en commençant
en terminant soit par la
porte une empreinte
tration, soit par le second
s les autres exemplaires
en commençant par la
nporte une empreinte
tration et en terminant par
omporte une telle

ants apparaîtra sur la
que microfiche, selon le
ignifie "A SUIVRE", le
IN".

tableaux, etc., peuvent être
réduction différents.
est trop grand pour être
liché, il est filmé à partir
auche, de gauche à droite,
prenant le nombre
Les diagrammes suivants

1
2
3

One in Ten!



Statistics show that One in every Ten of the entire population meets with an Accident every year.

INSURE AGAINST
ACCIDENTS

By taking a Yearly Policy in the

TRAVELERS

INSURANCE COMPANY
OF HARTFORD, CONN.

CASH ASSETS, over \$1,350,000.

Has Paid \$1,115,000 in Losses
FOR DEATH OR INJURY BY ACCIDENT.

JAS. BATTERSON, Pres't. RODNEY DENNIS, Sec'y.
CHAS. E. WILSON, Ass't Sec'y. GEO. B. LESTER, Actuar'y.

Travelers Insurance Co

The TRAVELERS is a General Accident Insurance Company, granting policies of insurance against Death or Wholly Disabling Injury by ACCIDENT, to men of all trades, professions, and occupations, at rates within the reach of all. It insures against accidents by machinery, accidents from the use of tools and implements, accidents of all descriptions that occur in the usual and lawful avocations of life, as well as accidents of travel. Policies written by Agents.

The TRAVELERS has paid *Twelve Thousand* Claims for Death or Injury by Accident.

Annual Premiums for a General Accident Policy.

Sum Insured in case of Fatal Accident.	Weekly Indemnity for Total Disability.	Yearly Cost At Preferred Rate.	Yearly Cost At Ordinary Rate.	Yearly Cost At Medium Rate.	Yearly Cost At Hazardous Rate.
\$1,000	\$5 00	\$5 00	\$7 50	\$10 00	\$15 00
2,000	10 00	10 00	15 00	20 00	30 00
3,000	15 00	15 00	22 50	30 00	45 00
4,000	20 00	20 00	30 00	40 00	
5,000	25 00	25 00	37 50	50 00	

CLASSIFICATION.

Preferred Class—\$5 per 1,000.—Bankers, Book-keepers, Merchants, Professional Men, Insurance Officers, Clerks, Physicians and Surgeons, etc.

Ordinary Class—\$7.50 per \$1,000.—Actors, Architects, Armorers, Commercial or Traveling Agents, Builders, Bookbinders, Printers, Plumbers, Jewelers, Machinists, Shoemakers, Horse Car Conductors, Peddlers, etc.

Medium Class—\$10 per \$1,000.—Blacksmiths, Brick or Stone Masons, Carpenters and Joiners, Butchers, Car Drivers, Passenger Conductors, Working Farmers, Hostlers and Horse Dealers, Policemen, Foundrymen, etc.

Hazardous Class—\$15 per \$1,000.—Boatmen, Captains of Sailing Vessels or Steamers, Loggers and Choppers, Bargemen, etc.

Extra Hazardous—\$20 per \$1,000.—Buzz Sawyers, Cartridge Makers, Freight Conductors, Locomotive Engineers or Firemen, etc.

[Complete Classification can be learned of the Company's Agents.]

AGENCIES.

R. M. JOHNSON, 207 Broadway, corner Fulton Street, New York.
 CHAS. G. C. PLUMMER, 89 Washington Street, Boston, Mass.
 H. G. GILMORE, No. 1 Union Block, Springfield, Mass.
 A. J. CHASE, 59 Exchange Street, Portland, Me.
 T. H. DINSMORE, No. 2 Bank Block, Water Street, Skowhegan, Maine.
 PRINDLE, BURNHAM & TEMPLE, Rutland, Vt.
 A. W. GODDING, 7 Weybosset Street, Providence, R. I.
 F. WHIPPLE, 263 Main Street, Worcester, Mass.
 GEO. S. LESTER, 201 Chapel Street, New Haven, Conn.
 W. M. W. ALLEN, 117 South Fourth Street, Philadelphia, Pa.
 ROBERT THORNE, 22 Fifth Street, Pittsburg, Pa.
 C. SAWYER, 65 South Salina Street, Syracuse, N. Y.
 W. S. HALL, 3 Main Street, Buffalo, N. Y.
 J. W. SIMPSON, 168 Superior Street, Cleveland, Ohio.
 R. D. HARRISON, cor. State and High Streets, Columbus, Ohio.
 C. C. BAILEY, 305 Olive Street, St. Louis, Mo.
 THOS. C. MCGUIRE, 6 North Calvert Street, Baltimore, Md.
 JULIUS WHITE, Manager Western Branch, 80 La Salle Street, Chicago.
 A. E. MAGILL, Manager Pacific Branch, 424 California St., San Francisco.
 THOS. E. FOSTER, Montreal, 145 Great St. James Street, Province of Quebec.
 AND IN ALL PRINCIPAL CITIES AND TOWNS.

