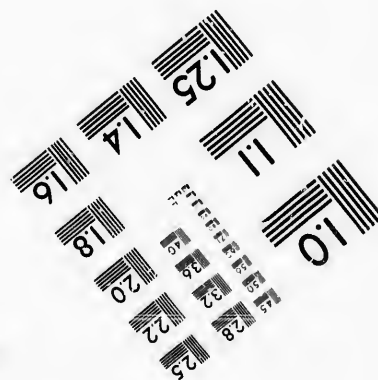
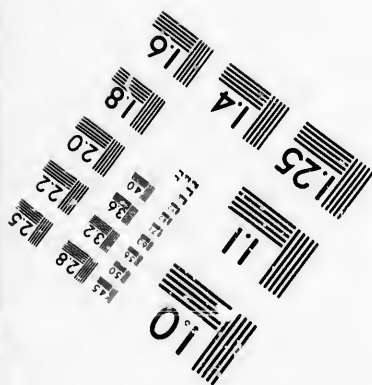
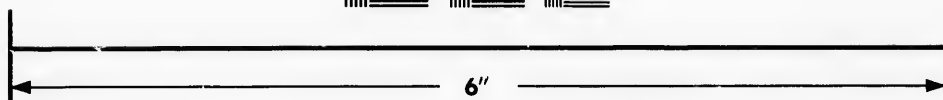
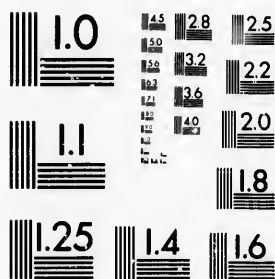


**IMAGE EVALUATION  
TEST TARGET (MT-3)**



**Photographic  
Sciences  
Corporation**

23 WEST MAIN STREET  
WEBSTER, N.Y. 14580  
(716) 872-4503

**CIHM/ICMH  
Microfiche  
Series.**

**CIHM/ICMH  
Collection de  
microfiches.**



Canadian Institute for Historical Microreproductions / Institut canadien de microreproductions historiques

**© 1986**

Technical and Bibliographic Notes/Notes techniques et bibliographiques

The Institute has attempted to obtain the best original copy available for filming. Features of this copy which may be bibliographically unique, which may alter any of the images in the reproduction, or which may significantly change the usual method of filming, are checked below.

L'Institut a microfilmé le meilleur exemplaire qu'il lui a été possible de se procurer. Les détails de cet exemplaire qui sont peut-être uniques du point de vue bibliographique, qui peuvent modifier une image reproduite, ou qui peuvent exiger une modification dans la méthode normale de filmage sont indiqués ci-dessous.

- Coloured covers/  
Couverture de couleur
- Covers damaged/  
Couverture endommagée
- Covers restored and/or laminated/  
Couverture restaurée et/ou pelliculée
- Cover title missing/  
Le titre de couverture manque
- Coloured maps/  
Cartes géographiques en couleur
- Coloured ink (i.e. other than blue or black)/  
Encre de couleur (i.e. autre que bleue ou noire)
- Coloured plates and/or illustrations/  
Planches et/ou illustrations en couleur
- Bound with other material/  
Relié avec d'autres documents
- Tight binding may cause shadows or distortion along interior margin/  
La reliure serrée peut causer de l'ombre ou de la distorsion le long de la marge intérieure
- Blank leaves added during restoration may appear within the text. Whenever possible, these have been omitted from filming/  
Il se peut que certaines pages blanches ajoutées lors d'une restauration apparaissent dans le texte, mais, lorsque cela était possible, ces pages n'ont pas été filmées.
- Additional comments:/  
Commentaires supplémentaires:

- Coloured pages/  
Pages de couleur
- Pages damaged/  
Pages endommagées
- Pages restored and/or laminated/  
Pages restaurées et/ou pelliculées
- Pages discoloured, stained or foxed/  
Pages décolorées, tachetées ou piquées
- Pages detached/  
Pages détachées
- Showthrough/  
Transparence
- Quality of print varies/  
Qualité inégale de l'impression
- Includes supplementary material/  
Comprend du matériel supplémentaire
- Only edition available/  
Seule édition disponible
- Pages wholly or partially obscured by errata slips, tissues, etc., have been refilmed to ensure the best possible image/  
Les pages totalement ou partiellement obscurcies par un feuillet d'errata, une pelure, etc., ont été filmées à nouveau de façon à obtenir la meilleure image possible.

This item is filmed at the reduction ratio checked below/  
Ce document est filmé au taux de réduction indiqué ci-dessous.

10X	12X	14X	16X	18X	20X	22X	24X	26X	28X	30X	32X
				✓							

The copy filmed here has been reproduced thanks to the generosity of:

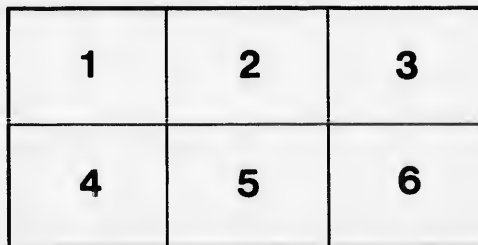
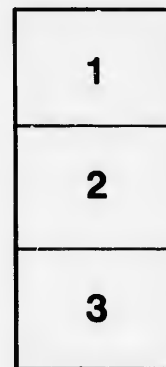
Douglas Library  
Queen's University

The images appearing here are the best quality possible considering the condition and legibility of the original copy and in keeping with the filming contract specifications.

Original copies in printed paper covers are filmed beginning with the front cover and ending on the last page with a printed or illustrated impression, or the back cover when appropriate. All other original copies are filmed beginning on the first page with a printed or illustrated impression, and ending on the last page with a printed or illustrated impression.

The last recorded frame on each microfiche shall contain the symbol  $\rightarrow$  (meaning "CONTINUED"), or the symbol  $\nabla$  (meaning "END"), whichever applies.

Maps, plates, charts, etc., may be filmed at different reduction ratios. Those too large to be entirely included in one exposure are filmed beginning in the upper left hand corner, left to right and top to bottom, as many frames as required. The following diagrams illustrate the method:



L'exemplaire filmé fut reproduit grâce à la générosité de:

Douglas Library  
Queen's University

Les images suivantes ont été reproduites avec le plus grand soin, compte tenu de la condition et de la netteté de l'exemplaire filmé, et en conformité avec les conditions du contrat de filmage.

Les exemplaires originaux dont la couverture en papier est imprimée sont filmés en commençant par le premier plat et en terminant soit par la dernière page qui comporte une empreinte d'impression ou d'illustration, soit par le second plat, selon le cas. Tous les autres exemplaires originaux sont filmés en commençant par la première page qui comporte une empreinte d'impression ou d'illustration et en terminant par la dernière page qui comporte une telle empreinte.

Un des symboles suivants apparaîtra sur la dernière image de chaque microfiche, selon le cas: le symbole  $\rightarrow$  signifie "A SUIVRE", le symbole  $\nabla$  signifie "FIN".

Les cartes, planches, tableaux, etc., peuvent être filmés à des taux de réduction différents. Lorsque le document est trop grand pour être reproduit en un seul cliché, il est filmé à partir de l'angle supérieur gauche, de gauche à droite, et de haut en bas, en prenant le nombre d'images nécessaire. Les diagrammes suivants illustrent la méthode.

rrata  
co  
pelure,  
n à

**HANDBOOK**  
OF  
**CANADIAN**  
**Excursion Tours**

VIA  
**GRAND TRUNK RAILWAY**  
AND  
**RICHELIEU & ONTARIO NAVIGATION CO.**

RATES OF FARE FOR SEASON OF

**1881.**

Tickets and information may be obtained at

**No. 280 Washington Street.**

**W. C. TALLMAN,**

*New England Agt.*

**N. J. GRACE,**

*Trav. Agt.*

J. HICKSON, Gen. Manager G. T. R'y - - - - - Montreal

L. J. SEARGEANT, Traffic Manager G. T. R'y - - - Montreal

W. WAINWRIGHT, Asst. Manager G. T. R'y - - - Montreal

ALEX. MILLOY, Traffic Manager E. & O. N. Co. - - - Montreal

J. STEPHENSON, Gen'l Pass. Agent - - - - - Montreal

1519-1221-6751

**GRAND TRUNK RAILWAY,**  
IN CONNECTION WITH THE  
**RICHELIEU & ONTARIO NAVIGATION COMPANY,**  
PRESENT THE  
**MOST ATTRACTIVE EXCURSION ROUTES**  
**OF THE SEASON.**

---

TRAINS LEAVE

**NIAGARA FALLS**

**AT 10.00 A.M.,**

Daily, Sundays excepted, arriving at LEWISTON, at 11.00, where passengers are taken by Steamer across Lake Ontario to TORONTO, connecting there with the

**ROYAL MAIL LINE of STEAMERS**

which leave HAMILTON at 9.00 A.M. and TORONTO at 2.00 P.M. These Steamers sail along the Northern Shore of Lake Ontario, passing by the

**THOUSAND ISLANDS,**

and SHOOTING the RAPIDS of the ST. LAWRENCE, and arrive at MONTREAL at 6.30 P.M. the following day.

---

**Steamer "MAGNET,"**

of the Richelieu and Ontario Navigation Company, will leave CHARLOTTE on Mondays, Wednesdays and Fridays, and OGDENSBURG, Tuesdays, Thursdays and Saturdays.

---

**Dining and Palace Cars**

ARE REGULARLY RUN

**ON ALL EXPRESS TRAINS**

On the Grand Trunk Railway West of Montreal.

VAI,  
COMPANY,  
ROUTES

LLS

11.00, where  
TORONTO,

MERS

at 2.00 P.M.  
Lake Ontario,

S,  
E, and arrive

T,"

y, will leave  
and OGDENS-

Cars

AINS  
eal.

D T R U I



H F L O R E T B

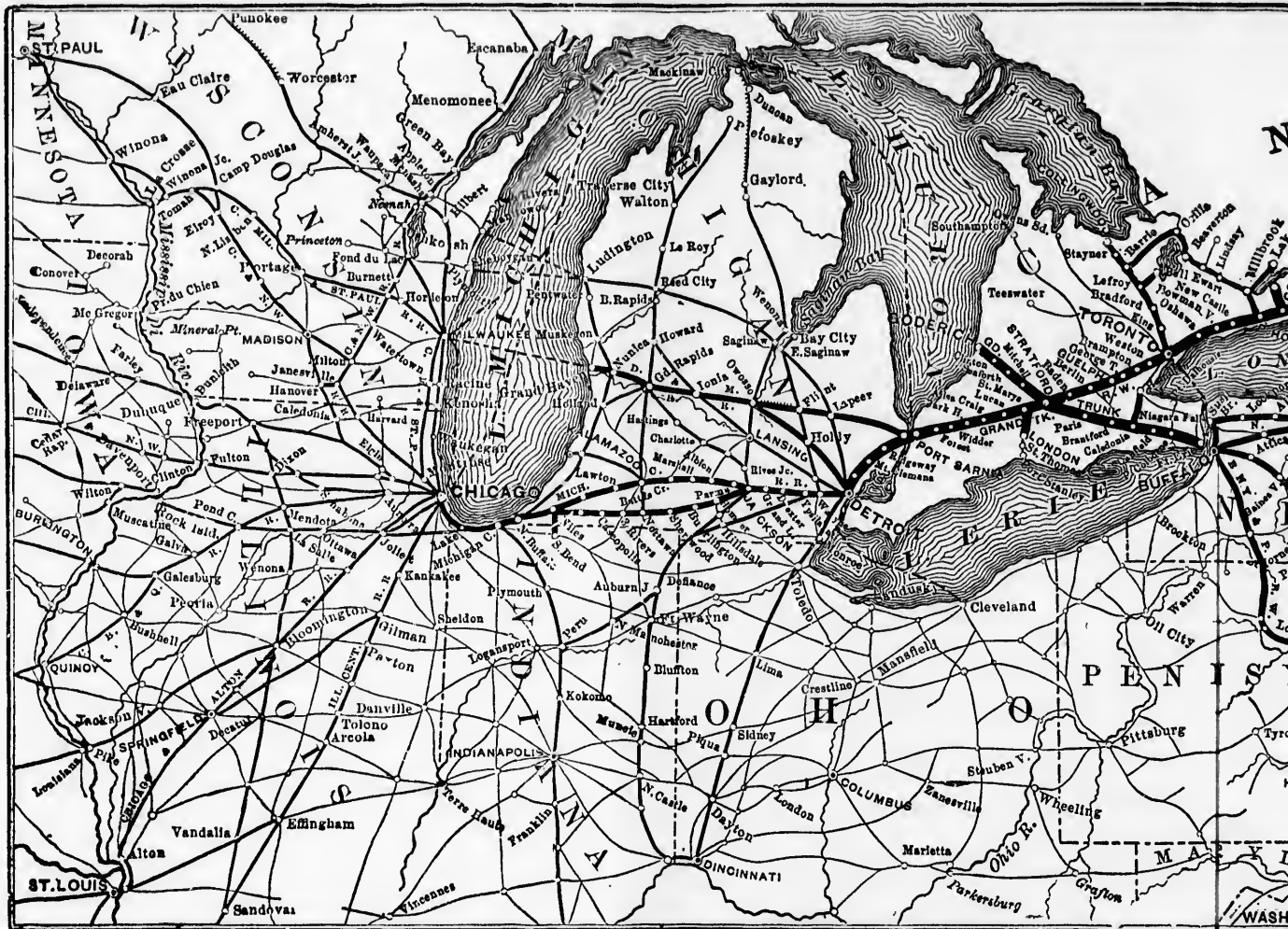
OBTAINED AT 280 WASHINGTON STREET, BOSTON

From England about

THE CARS ON SH EXE

# GRAND TRUNK

RATES OF FARE can be supplied to ANY POINTS in the West,  
upon application to this office



## THROUGH TICKETS

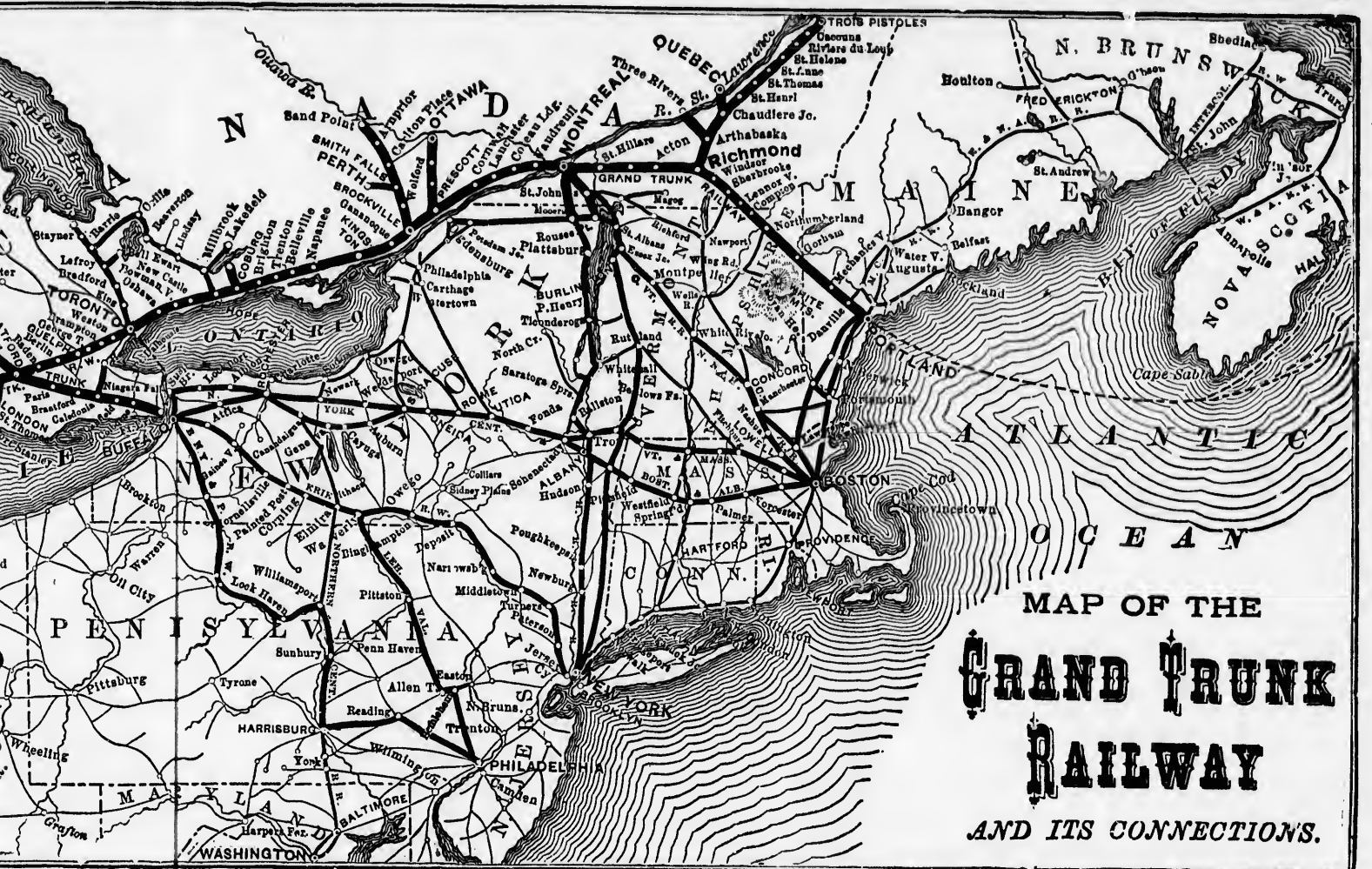
AND ALL NECESSARY INFORMATION CAN BE OBTAINED AT 280 WASHINGTON STREET, BOSTON

W. C. TALLMAN. New England Agent.

DINING AND PALACE CARS on all EXPR



# UNION RAILWAY.



STREET, BOSTON  
t.  
EXRESS TRAINS

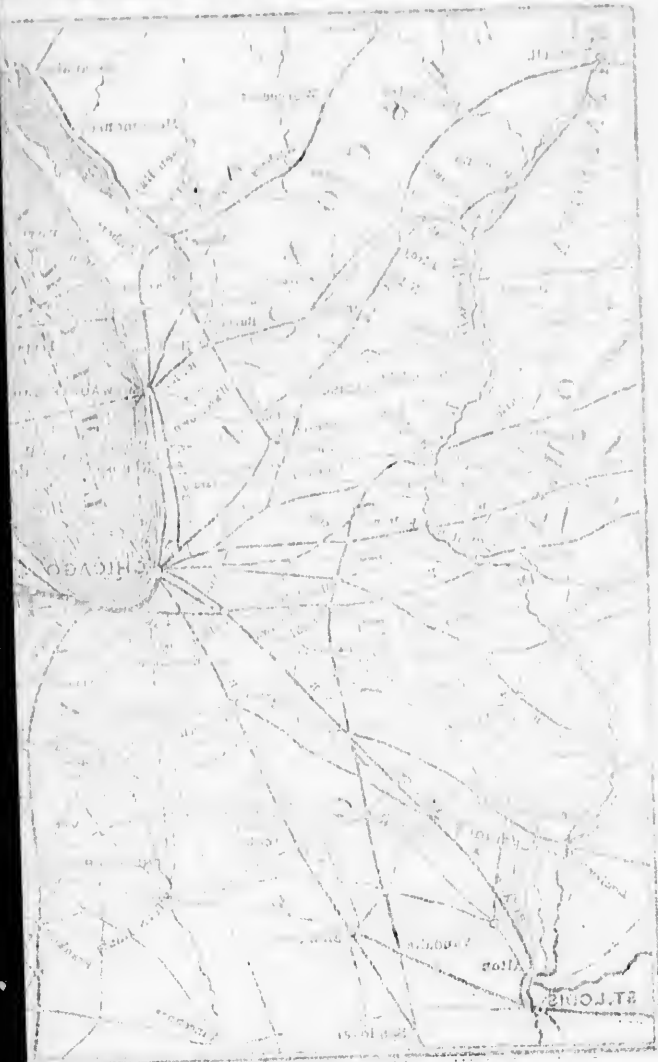
**THE SHORTEST AND MOST DIRECT ROUTE TO ALL POINTS**

**EAST AND WEST.**

TICKETS FOR SALE AT ALL PRINCIPAL TICKET OFFICES IN NEW ENGLAND.

EXRESS TRAINS from MONTREAL WEST.

GRAND



DO NOT GET THE MISAPPROPRIATE IDEA OF TRAVELING BY RAIL TO BE A  
MERE MATTER OF GETTING ON THE TRAIN AND GOING TO THE PLACE  
WHICH YOU WANT TO VISIT. YOU CAN BE ASSISTED IN THE MOST EFFECTIVE  
MANNER BY THE AGENTS OF THE GREAT LAKES AND ST. LOUIS RAILWAY.

EXC

Tourists

The Coup  
Prescott and  
boat or rail,  
Ontario Navig  
Shore Line fr  
Toronto can b  
of 60c. to the A

Tickets inc  
Montreal, but  
The Ticke  
visit the Ausa

Agents ar  
Grand Trunk  
of Steamers of  
before. The c  
and has been e

Pullman Palac  
A Pullman  
Train from To  
season) passen

Tickets rea  
than about the  
Day Line and L  
June, and pass  
Lines cease run  
earlier or later a

Agents will  
coupons (N.Y.  
must be made w  
tickets, which w

No deviat  
special autho

Parties hol  
routes from Ni  
lston, and Stea  
to Toronto, on  
Railway, or R  
Ontario," the "  
rence," by day

THROUGH

AND ALL NECESSARY INFORMATION CAN BE

W. O. FARMAN

DINING AND PALACE

1

LIST OF  
**EXCURSION ROUTES**

AND  
RATES OF FARE

FOR  
**Tourists' Tickets for the Season of 1881.**

TICKETS GOOD UNTIL NOVEMBER 1st.

The Coupons between Toronto and Kingston, Kingston and Prescott, Prescott and Montreal, and Montreal and Quebec, are valid either by boat or rail, and they are likewise good either by the Richelieu and Ontario Navigation Co.'s Line from Toronto, or by that Company's South Shore Line from Charlotte. The Coupons between Niagara Falls and Toronto can be exchanged for All-Rail Tickets, via G. W. R., on payment of 60c. to the Agent at the Falls.

Tickets include meals on Lake Ontario and the River St. Lawrence to Montreal, but between Montreal and Quebec they are for passage only.

The Tickets via Lake Champlain afford Tourists an opportunity to visit the Ausable Chasm. (See Form X No. 96.)

Agents are requested to specially inform the Passengers that the Grand Trunk Railway and Richelieu and Ontario Navigation Co.'s Line of Steamers offer better inducements to the travelling public than ever before. The Grand Trunk Railway has been relaid with Steel Rails, and has been equipped with New Locomotives and First-class Cars Pullman Palace and Dining Cars are run on all Express Trains.

A Pullman Palace Sleeping Car will be attached to the Evening Train from Toronto, and will run through to Kingston Wharf, (early in season) passengers can remain in the Car until the Boat arrives.

Tickets reading over the Mt. Washington R.R. are not available earlier than about the middle of June or after about the 20th of September. The Day Line and Lake George Steamers commence their trips about the 1st of June, and passengers should be reminded that many of the Steamboat Lines cease running, or make irregular trips, after about the 1st of October, earlier or later according to the severity or mildness of the season.

Agents will please notify passengers holding tickets without transfer coupons (N.Y. C. R.R. Depot, Lewiston to the wharf) that application must be made without fail at the Ticket Offices at the Falls for transfer tickets, which will be supplied **Free of Charge.**

**No deviation from the rates given will be allowed without special authority.**

Parties holding our **THROUGH EXCURSION TICKETS**, have choice of routes from Niagara Falls, viz.: via New York Central Railway to Lewiston, and Steamer to Toronto (or Great Western Railway via Hamilton to Toronto, on payment of 60c.), connecting there with Grand Trunk Railway, or Royal Mail Line of Steamers passing through "Lake Ontario," the "Thousand Islands," and "Rapids of the River St. Lawrence," by daylight, to Ogdensburg or Montreal.

# RATES OF FARE

FROM

## Boston to Niagara Falls

**NOTICE.**—The following rates of fare are given separately from Boston to Niagara Falls and from Niagara Falls to destination. To make the through rate for round trip, both rates must be added.

Via Boston & Albany and N.Y. Central Railways.....	\$11.15
" Fitchburg, Rutland, Saratoga and N.Y. Central Railways....	11.15
" Fitchburg & Hoosao Tunnel Line, and New York Central R.R.,	11.15
" Any All-Rail Route to N.Y. City, Hudson River, and N.Y.C. R'y	15.00
" " " Erie Railway.....	15.00
" Sound Lines to New York, Hudson Riv. & N.Y.C. R.R. or Erie R'y	12.15

### Routes and Rates of Fare from Niagara Falls.

**BOSTON.**

**Form X 11.** Via Toronto, Montreal, Quebec, Gorham and Portland..... **\$23.00**

**BOSTON.**

**Form X 12.** Via Toronto, Montreal, St. Johns, Burlington, Bellows Falls and Fitchburg..... **\$20.00**

**BOSTON.**

**Form X 15.** Via Toronto, Montreal, Gorham and Portland. **\$20.00**

**BOSTON.**

**Form X 16.** Via Toronto, Montreal, St. Johns, White River Junction, Concord and Nashua..... **\$20.00**

**BOSTON.**

**Form X 17.** Via Toronto, Ogdensburg, St. Albans and Vermont Central Line..... **\$20.00**

**BOSTON.**

**Form X 29.** Via Toronto, Montreal, Rouse's Point, Plattsburg, Lake Champlain to Fort Ticonderoga, then by R. R. via Saratoga, Rutland, Bellows Falls, and Fitchburg..... **\$26.00**

**BOSTON.**

**Form X 34.** Via Toronto, Montreal, Rouse's Point, Plattsburg, Lake Champlain, Lake George, Saratoga, Albany, Peoples Line of Steamers to New York, and Sound Steamers to Boston..... **\$29.00**

Routes and Rates of Fare from Niagara Falls. 3

**BOSTON.**

*Form X 35.* Via Toronto, Montreal, St. John's, White River Junction, Wells River, Bethlehem, Profile House, Bethlehem, Fabyan House, Crawford House and back to Fabyans, thence via Concord, Nashua, and Lowell. .... **\$28.75**

**BOSTON.**

*Form X 38.* Via Toronto, Montreal, Rouse's Point, Plattsburgh, Lake Champlain, Burlington, Bellows Falls, and Fitchburg. .... **\$21.75**

**BOSTON.**

*Form X 39.* Via Toronto, Ogdensburg, Mooer's Junction, Plattsburgh, Lake Champlain, Burlington, Bellows Falls and Fitchburg. .... **\$20.25**

**BOSTON.**

*Form X 136.* Via Toronto, Montreal, Sherbrooke, White River Junction, Concord and Nashua. .... **\$21.00**

**BOSTON.**

*Form X 137.* Via Toronto, Montreal, Quebec, Sherbrooke, White River Junction, Concord and Nashua. .... **\$24.00**

**BOSTON.**

*Form X 142.* Via Toronto, Montreal, Groveton, Concord and Nashua. .... **\$23.00**

**BOSTON.**

*Form X 145.* Via Toronto, Montreal, Quebec, Groveton, Concord and Nashua. .... **\$26.00**

**BOSTON.**

*Form X 147.* Via Toronto, Montreal, Groveton, Fabyan House, Bethlehem, Profile House, Bethlehem, thence via Concord and Nashua. .... **\$29.00**

**BOSTON.**

*Form X 154.* Via Toronto, Montreal, Gorham, Stages to Glen House and Summit, Summit to Base by Mt. Washington R.R., Base to Fabyan House, Bethlehem, Profile House, Bethlehem, thence via Concord and Nashua. .... **\$38.00**

**BOSTON.**

*Form 2674.* Via Toronto, Montreal, Quebec, Intercolonial Railway to Halifax, St. John, Steamer to Portland, and Rail to Boston. .... **\$34.75**

**BOSTON.**

*Form 2675.* Via Toronto, Montreal, Quebec, Intercolonial Railway to Point du Chene, Steamer to Summerside, P. E. I., Rail to Charlottetown, Steamer to Pictou, Rail to Halifax and St. John, Steamer to Portland, and Rail to Boston. .... **\$38.75**

**BOSTON.**

*Form 2910.* Via Toronto, Montreal, St. Johns, St. Albans, Burlington, Lake Champlain, Lake George, Caldwell, Glens Falls, Saratoga, Albany, Steamer to New York, and Sound Steamer to Boston. .... **\$29.50**

ills

given  
Niag-  
te for

\$11.15  
11.15  
11.15  
15.00  
15.00  
12.15

ills

\$23.00

\$20.00

\$20.00

\$20.00

\$20.00

\$26.00

\$29.00

4 Routes and Rates of Fare from Niagara Falls.

**BOSTON.**

**Form 2914.** Via Toronto, Montreal, Quebec, Sherbrooke, Newport, Wells River, Concord, Nashua and Lowell..... **\$24.00**

**BOSTON.**

**Form 2961.** Via Toronto, Montreal, Groveton, Fabyan's, Bethlehem, Profile House, Stage to Plymouth, thence via Concord, Nashua and Lowell..... **\$29.00**

**BOSTON.**

**Form 2962.** Via Toronto, Montreal, Gorham, Stages to Glen House and Summit Mt. Washington, Summit to Base by Mt. Washington R.R., Fabyan's, Bethlehem, Profile House, Stage to Plymouth, thence via Concord, Nashua and Lowell..... **\$38.00**

**BOSTON.**

**Form 3016.** Via Toronto, Montreal, St. Johns, St. Albans, Montpelier, White River Junction, Wells River, Bethlehem, Profile House, Bethlehem, Fabyan's, Crawford House, back to Fabyan's, Wells River, Concord, Nashua and Lowell..... **\$29 50**

**BOSTON.**

**Form 3029.** Via Toronto, Montreal, St. Lambert, Newport, St. Johnsbury, Wells River, Concord, Nashua, and Lowell..... **\$20.00**

**BOSTON.**

**Form 3030.** Via Toronto, Montreal, St. Lambert, Newport, St. Johnsbury, Lunenburg, Bethlehem, Profile House Stage to Plymouth, Rail to Concord, Nashua, and Lowell.. **\$26.50**

**BOSTON.**

**Form 3031.** Via Toronto, Montreal, St. Lambert, Newport, St. Johnsbury, Lunenburg, Bethlehem, Profile House, Bethlehem, Fabyan's, Summit of Mount Washin ton, Glen House, Gorham, and Portland ..... **\$34.50**

**BOSTON.**

**Form 3032.** Via Toronto, Montreal, St. Lambert, Newport, St. Johnsbury, Lunenburg, Fabyan's, Crawford House, North Conway, and via Eastern R.R..... **\$24.00**

**BOSTON.**

**Form 3056.** Via Toronto, Montreal, Quebec, Sherbrooke, St. Johnsbury, Lunenburg, Scott's, Bethlehem, Profile House, Bethlehem, Fabyan's, Crawford House, Fabyan's, Base of Mt. Washington, Summit, Stage to Glen House and Gorham, Rail via Portland..... **\$38.50**

**CRAWFORD HOUSE.**

**Form X 49** Via Toronto, Montreal, St. Johns, White River Junction, Wells River and Fabyan House..... **\$19.70**

**CRAWFORD HOUSE.**

**Form X 50.** Via Toronto, Ogdensburg, St. Albans, White River Junction, Wells River and Fabyan House. **\$20.00**

Routes and Rates of Fare from Niagara Falls.

**CRAWFORD HOUSE.**

*Form X 100.* Via Toronto, Montreal, Gorham, Stages to Glen House and Tip Top House, Mt. Washington R.R. to Base of Mountain, and Fabyan's..... **\$29.00**

**CRAWFORD HOUSE.**

*Form X 101.* Via Toronto, Montreal, Quebec, Gorham, Stages to Glen House and Tip Top House, Mount Washington R.R. to Base of Mountain, and Fabyan's... **\$32.00**

**CRAWFORD HOUSE.**

*Form 3033.* Via Toronto, Montreal, St. Lambert, Newport, St. Johnsbury, Lunenburg, and Fabyan's ..... **\$18.30**

**FABYAN'S.**

*Form 2697.* Via Toronto, Montreal, St. Johns, W. R. Junction and Wells River..... **\$19.40**

**FABYAN'S.**

*Form 2911.* Via Toronto, Montreal, St. Johns, St. Albans, Montpel. and Wells River..... **\$19.75**

**FABYAN'S.**

*Form 3017.* Via Toronto, Montreal, St. Johns, St. Albans, Montpelier, White River Junction, Wells River, Bethlehem, Profile House and Bethlehem ..... **\$22.50**

**GORHAM.**

*Form X 9.* Via Toronto, Montreal, Quebec and Grand Trunk Railway..... **\$20.50**

**GORHAM.**

*Form X 13.* Via Toronto, Montreal and Grand Trunk Railway direct..... **\$17.50**

**GORHAM.**

*Form 3027.* Via Toronto, Montreal, St. Lambert, Newport, St. Johnsbury, Lunenburg, Fabyan's, Crawford House, North Conway, Glen Station, and Glen House.... **\$24.50**

**GORHAM.**

*Form 3028.* Via Toronto, Montreal, St. Lambert, Newport, St. Johnsbury, Lunenburg, Fabyan's, Summit of Mt. Washington, and Glen House ..... **\$26.50**

**KINGSTON.**

*Form X 2.* Via Toronto, Rail or Steamer ..... **\$7.00**

**LANCASTER, N.H.**

*Form X 98.* Via Toronto, Montreal, Quebec and Groveton ..... **\$19.00**

**MONTREAL.**

*Form X 6.* Via Toronto, Rail or Steamer..... **\$12.00**

**NEW YORK.**

*Form X 19.* Via Toronto, Montreal, Rouse's Point, Plattsburg, Lake Champlain, Lake George, Saratoga, Troy and N. Y. C. & Hudson River R.R. .... **\$26.55**

**NEW YORK.**

*Form X - 0.* Via Toronto, Montreal, Rouse's Point, Plattsburg, Lake Champlain, Lake George, Saratoga, Albany, and Peoples Line of Steamers ..... **\$25.05**

6 Routes and Rates of Fare from Niagara Falls.

**NEW YORK.**

*Form X 21.* Via Toronto, Montreal, Rouse's Point, Plattsburg, Lake Champlain, Saratoga, Troy and N. Y. C. and Hudson River R.R..... **\$23.00**

**NEW YORK.**

*Form X 22.* Via Toronto, Montreal, Rouse's Point, Plattsburg, Lake Champlain, Saratoga, Albany, and Peoples Line of Steamers..... **\$22.20**

**NEW YORK.**

*Form X 24.* Via Toronto, Montreal, Gorham, Portland, Boston, and Sound Steamers ..... **\$23.00**

**NEW YORK.**

*Form X 25.* Via Toronto, Montreal, Quebec, Gorham, Portland, Boston, and Sound Steamers..... **\$26.00**

**NEW YORK.**

*Form X 26.* Via Toronto, Montreal, Rouse's Point, Plattsburg, Lake Champlain, Lake George, Saratoga, Albany, and Day Line Steamers..... **\$25.55**

**NEW YORK.**

*Form X 27.* Via Toronto, Montreal, Rouse's Point, Plattsburg, Lake Champlain, Saratoga, Albany, and Day Line Steamers..... **\$22.70**

**NEW YORK.**

*Form X 36.* Via Toronto, Montreal, Quebec, Gorham, Stage to Glen House and Tip-Top House, Mt. Washington R.R. to Base of Mountain, Rail to Crawford House and Fabyan House, Bethlehem, Profile House, Bethlehem, thence via Concord, Nashua, Boston, and Sound Steamers..... **\$45.00**

**NEW YORK.**

*Form X 42.* Via Toronto, Montreal, St. Johns, Burlington, Lake Champlain, Ft. Ticonderoga, Saratoga, Albany, and Day Line Steamers..... **\$22.70**

**NEW YORK.**

*Form X 43.* Via Toronto, Montreal, St. Johns, Burlington, Lake Champlain, Lake George, Saratoga, Albany, and Day Line Steamers..... **\$25.50**

**NEW YORK.**

*Form X 44.* Via Toronto, Ogdensburg, St. Albans, Burlington, Lake Champlain, Ft. Ticonderoga, Saratoga, Albany and Day Line Steamers..... **\$22.70**

**NEW YORK.**

*Form X 45.* Via Toronto, Ogdensburg, St. Albans, Burlington, Lake Champlain, Lake George, Saratoga and Day Line Steamers ..... **\$25.50**

**NEW YORK.**

*Form X 46.* Via Toronto, Montreal, St. Johns, Burlington, Bellows Falls and Springfield..... **\$22.00**



**Routes and Rates of Fare from Niagara Falls. 7**

**NEW YORK.**

*Form X 51.* Via Toronto, Ogdensburg, St. Albans, White River Junction and Springfield..... **\$22.00**

**NEW YORK.**

*Form X 138.* Via Toronto, Montreal, Sherbrooke, White River Junction, South Vernon and Springfield.. **\$23.00**

**NEW YORK.**

*Form X 139.* Via Toronto, Montreal, Quebec, Sherbrooke, White River Junction, S. Vernon and Springfield, **\$26.00**

**NEW YORK.**

*Form X 140.* Via Toronto, Montreal, Sherbrooke, White River Junction, Concord, Nashua, Boston, and Sound Steamers ..... **\$24.00**

**NEW YORK.**

*Form X 141.* Via Toronto, Montreal, Quebec, Sherbrooke, White River Junction, Concord, Nashua, Boston, and Sound Steamers..... **\$27.00**

**NEW YORK.**

*Form X 150.* Via Toronto, Montreal, Groveton, Concord, Nashua, Lowell, Mansfield, Weir Junction to Fall River or Newport, and thence by Steamers..... **\$27.50**

**NEW YORK.**

*Form X 155.* Via Toronto, Ogdensburg, St. Albans, Burlington, Lake Champlain, Ft. Ticonderoga, Saratoga, Troy and N. Y. C. & H. R. R.R..... **\$23.75**

**NEW YORK.**

*Form X 156.* Via Toronto, Ogdensburg, St. Albans, Burlington, Lake Champlain, Lake George, Glens Falls, Saratoga, Troy and N. Y. C. & H. R. R.R. .... **\$26.55**

**NEW YORK.**

*Form X 185.* Via Toronto, Montreal, Rouse's Point, Plattsburg, Lake Champlain to Burlington, Central Vermont R.R. to New York via South Vernon and Springfield ..... **\$24.75**

**NEW YORK.**

*Form X 191.* Via Toronto, Montreal, Gorham, Stages to Glen House and Tip Top House, Mt. Washington R.R. to Base, Fabyan's, Bethlehem, Profile House, Bethlehem, Concord, Nashua, Lowell, Boston, and Sound Steamers..... **\$41.50**

**NEW YORK.**

*Form X 192.* Via Toronto, Montreal, Groveton, Fabyan's, Base of Mountain, Mt. Washington R.R. to Summit, Stages to Glen House and Glen Station, Rail to Boston, and Sound Steamers..... **\$36.50**

**NEW YORK.**

*Form X 195.* Via Toronto, Montreal, Quebec, Gorham, Stages to Glen House and Tip-Top House and back to Glen House, Glen Station, Rail to Portland and Boston, and Sound Steamers..... **\$36.75**

8 Routes and Rates of Fare from Niagara Falls.

**NEW YORK.**

*Form X 198.* Via Toronto, Montreal, Quebec, Gorham, Stages to Glen House and Glen Station, Rail to Boston, and Sound Steamers..... **\$32.00**

**NEW YORK.**

*Form 2678.* Via Toronto, Montreal, Quebec, Inter. Ry. to Halifax, St. John, Steamer to Portland, Rail to Boston, and Sound Steamers..... **\$38.75**

**NEW YORK.**

*Form 2679.* Via Toronto, Montreal, Quebec, Intercolonial Ry. to Point du Chene, Steamer to Summerskile, Rail to Charlottetown, Steamer to Pictou, Rail to Halifax, St. John, Steamer to Portland, Rail to Boston, and Sound Steamers..... **\$42.75**

**NEW YORK.**

*Form 2751.* Via Toronto, Montreal, Quebec, Gorham, Glen House, Summit Mt. Washington, Glen House, Glen Station, Crawford House, Fabyan's, Wells River, White River Junction, Springfield, New Haven..... **\$40.50**

**NEW YORK.**

*Form 2752.* Via Toronto, Montreal, St. Johns, Rutland, State Line, Troy, Albany, and via New York Central and Hudson River R.R..... **\$23.00**

**NEW YORK.**

*Form 2753.* Via Toronto, Montreal, St. Johns, Rutland, State Line, Troy, Albany, Peoples Line Steamers, **\$21.50**

**NEW YORK.**

*Form 2754.* Via Toronto, Montreal, St. Johns, Rutland, State Line, Troy, Albany, Day Line Steamers.... **\$22.00**

**NEW YORK.**

*Form 2905.* Via Toronto, Montreal, St. Johns, St. Albans, Burlington, Leicester Junction, Ticonderoga, Roger's Rock Hotel, Lake George, Caldwell, Glens Falls, Saratoga and N. Y. C. & H. R. R.R..... **\$27.00**

**NEW YORK.**

*Form 2906.* Via Toronto, Montreal, St. Johns, St. Albans, Bellows Falls, Miller's Falls, New London, and Norwich Line Steamers..... **\$22.00**

**NEW YORK.**

*Form 2907.* Via Toronto, Montreal, Quebec, Gorham, Glen House, Summit Mt. Washington, Base, Fabyan's Crawford House and back to Fabyan's, Wells River, White River Junction, Bellows Falls, Miller's Falls, New London, and Norwich Line Steamers..... **\$40.50**

**NEW YORK.**

*Form 2960.* Via Toronto, Montreal, Quebec, Gorham, Stages to Glen House and Summit Mt. Washington, Summit to Base by Mt. Washington R.R., Fabyan's, Crawford House, Fabyan's, Bethlehem, Profile House, Stage to Plymouth, thence via Concord, Nashua, Lowell, Boston, and Sound Steamers..... **\$45.00**

Routes and Rates of Fare from Niagara Falls.

**NEW YORK.**

**Form 2963.** Via Toronto, Montreal, Gorham. Stages to Glen House and Summit Mt. Washington, Summit to Base by Mt. Washington R.R., Fabyan's, Bethlehem, Profile House, Stage to Plymouth, thence via Concord, Nashua, Lowell, Boston and Sound Steamers ..... **\$41.50**

**NEW YORK.**

**Form 3018.** Via Toronto, Montreal, Quebec, Gorham, Glen House, Summit of Mt. Washington, Base of Mountain, Fabyan's, Crawford House, back to Fabyan's, Bethlehem, Profile House, Bethlehem, Wells River, White River Junction, Montpelier Burlington, Lake Champlain Steamer to Fort Ticonderoga, Rail to Baldwin, Lake George Steamer to Caldwell, Stage to Glen's Falls, Rail to Saratoga and Albany, and Day Line Steamers to New York **\$50.75**

**NEW YORK.**

**Form 3019.** Via Toronto, Montreal, Quebec, Gorham, &c., same as Form 3018 to Albany, then via Peoples Line Steamer to New York..... **\$50.25**

**NEW YORK.**

**Form 3020.** Via Toronto, Montreal, Rouse's Point, Plattsburgh, Lake Champlain Steamer to Burlington, Rail to Montpelier, White River Junction, Wells River, Bethlehem, Profile House, Bethlehem, Fabyan's, Crawford House, back to Fabyan's, Base of Mt. Washington, Summit, Stage to Glen House, and to Glen Station, Rail to Portland, Boston, and via Sound Steamers..... **\$42.50**

**NEW YORK.**

**Form 3021.** Via Toronto, Montreal, Rouse's Point, Plattsburgh, Lake Champlain Steamer to Burlington, Rail to Montpelier, White River Junction, Wells River, Bethlehem, Fabyan's, Base of Mt. Washington, Summit and back to Fabyan's, Crawford House, North Conway, Eastern R.R. to Boston, and Sound Steamers ..... **\$38.00**

**NEW YORK.**

**Form 3022.** Via Toronto, Montreal, St. Johns, St. Albans, Montpelier, White River Junction, Wells River, Bethlehem, Profile House, Bethlehem, Fabyan's, Crawford House, North Conway, Portland, Boston, and Sound Steamers..... **\$31.00**

**NEW YORK.**

**Form 3023.** Via Toronto, Montreal, St. Johns, St. Albans, Montpelier, White River Junction, Wells River, Bethlehem, Profile House, Bethlehem, Fabyan's, Crawford House, back to Fabyan's, Base of Mt. Washington, Summit, Stage to Glen House, and to Glen Station, Rail to North Conway, Eastern R.R. to Boston, and Sound Steamers..... **\$41.00**

**NEW YORK.**

**Form 3024.** Via Toronto, Montreal, St. Johns, St. Albans, Montpelier, White River Junction, Wells River, Bethlehem, Profile House, Bethlehem, Fabyan's, Crawford House, back to Fabyan's, Wells River, White River Junction, Bellows Falls, Brattleboro', Miller's Falls, New London, and Sound Steamers..... **\$33.50**

10      **Routes and Rates of Fare from Niagara Falls.**

**NEW YORK.**

**Form 3034.** Via Toronto, Montreal, St. Lambert, Newport, St. Johnsbury, Lunenburg, Bethlehem, Profile House, Bethlehem, Fabyan's, Crawford House, North Conway, Eastern R.R. to Boston and Sound Steamers....      **\$29.00**

**NEW YORK.**

**Form 3035.** Via Toronto, Montreal, St. Lambert, Newport, White River Junction, Springfield, Hartford, and New Haven.....      **\$23.00**

**NEW YORK.**

**Form 3036.** Via Toronto, Montreal, St. Lambert, Newport, Wells River, Concord, Nashua, Worcester, Norwich, and Sound Steamers.....      **\$23.00**

**NEW YORK.**

**Form 3037.** Via Toronto, Montreal, St. Lambert, Newport, St. Johnsbury, Lunenburg, Bethlehem, Profile House, Stage to Plymouth, Concord, Nashua, Worcester, Norwich, and Sound Steamers.....      **\$31.00**

**NEW YORK.**

**Form 3038.** Via Toronto, Montreal, St. Lambert, Newport, St. Johnsbury, Lunenburg, Bethlehem, Profile House, Bethlehem, Fabyan's, Summit of Mt. Washington, Glen House, Gorham, Portland, Boston, and Sound Steamers..      **\$37.50**

**NEW YORK.**

**Form 3057.** Via Toronto, Montreal, Quebec, Sherbrooke, St. Johnsbury, Lunenburg, Scott's, Bethlehem, Profile House, Bethlehem, Fabyan's, Crawford House, Fabyan's, Base of Mt. Washington, Summit, Stage to Glen House and Gorham, Rail to Portland and Boston, and Sound Steamers.....      **\$41.25**

**NEW YORK.**

**Form 3058.** Via Toronto, Montreal, Quebec, Sherbrooke, St. Johnsbury, Lunenburg, Scott's, Bethlehem, Profile House, Bethlehem, Fabyan's, Crawford House, Fabyan's, Wells River, Concord, Nashua, Lowell, Boston, and Sound Steamers.....      **\$33.50**

**NEW YORK.**

**Form 3059.** Via Toronto, Montreal, Quebec, Sherbrooke, St. Johnsbury, Lunenburg, Scott's, Bethlehem, Profile House, Bethlehem, Fabyan's, Crawford House, Fabyan's, Wells River, White River Junction, South Vernon, Springfield, Hartford and New Haven.....      **\$34.25**

**NEW YORK.**

**Form 3060.** Via Toronto, Montreal, Quebec, Pt. Levi, Sherbrooke, St. Johnsbury, Lunenburg, Scott's, Bethlehem, Profile House, Bethlehem, Fabyan's, Crawford, Fabyan's, Concord, Nashua, Lowell, Boston, Rail or Sound Steamers.....      **\$**

**NEW YORK.**

**Form 3061.** Via Toronto, Montreal, Sherbrooke, St. Johnsbury, Lunenburg, Scott's, Bethlehem, Profile House, Bethlehem, Fabyan's, Crawford House, North Conway, Eastern R.R. to Boston, and Sound Steamers.....      **\$31.50**

**Routes and Rates of Fare from Niagara Falls. 11**

**NEW YORK.**

**Form 3062.** Via Toronto, Montreal, Sherbrooke, St. Johnsbury, Lunenburg, Scott's, Bethlehem, Fabyan's, Base of Mt. Washington, Summit and return to Base, Fabyan's, Crawford House, North Conway, Wolfboro, Steamer to Wells, Rail to Concord, Nashua, Lowell, Boston and Sound Steamers ..... **\$40.00**

**NEW YORK.**

**Form 3063.** Via Toronto, Montreal, Sherbrooke, St. Johnsbury, Lunenburg, Scott's, Bethlehem, Profile House, Bethlehem, Fabyan's, Crawford House, North Conway, Portland, Boston, and Sound Steamers ..... **\$31.50**

**OGDENSBURG.**

**Form X 5.** Via Toronto, Rail or Steamer..... **\$8.65**

**PORTLAND.**

**Form X 10.** Via Toronto, Montreal, Quebec and Gorham, **\$21.50**

**PORTLAND.**

**Form X 14.** Via Toronto, Montreal and Gorham direct, **\$18.50**

**PORTLAND.**

**Form X 40.** Via Toronto, Montreal and Gorham, and return by Grand Trunk Railway..... **\$28.00**

**PRESCOTT.**

**Form X 4.** Via Toronto, Rail or Steamer..... **\$8.65**

**PRESCOTT.**

**Form X 90.** Via Suspension Bridge, Rail to Toronto, and Steamer or Rail..... **\$9.25**

**PRESCOTT.**

**Form X 91.** Via Suspension Bridge, Rail to Toronto, and Steamer or Rail..... **\$9.25**

**PRESCOTT.**

**Form X 92.** Via Suspension Bridge, Steamer from Niagara to Toronto, and Steamer or Rail..... **\$8.65**

**PRESCOTT.**

**Form X 93.** Via Suspension Bridge, Steamer from Niagara to Toronto, and Steamer or Rail..... **\$8.65**

**PRESCOTT.**

**Form 2797.** Via N. Y. C. R.R. and R. & O. N. Co. Steamer from Charlotte..... **\$8.65**

**PROFILE HOUSE.**

**Form X 47.** Via Toronto, Montreal, St. Johns, White River Junction, Wells River and Bethlehem..... **\$20.40**

**PROFILE HOUSE.**

**Form X 48.** Via Toronto, Ogdensburg, St. Albans, White River Junction, Wells River and Bethlehem..... **\$20.40**

**PROFILE HOUSE.**

**Form X 102.** Via Toronto, Montreal, Gorham, Stages to Glen House and Tip Top House, Mt. Washington R.R. to Base of Mountain, Rail to Crawford House, Fabyan House, Bethlehem ..... **\$31.25**

12 Routes and Rates of Fare from Niagara Falls.

**PROFILE HOUSE.**

*Form X 103.* Via Toronto, Montreal, Quebec, Gorham, Stages to Glen House and Tip Top House, Mt. Washington R.R. to base of Mountain, Rail to Crawford House, Fabyan House, Bethlehem..... **\$34.25**

**PROFILE HOUSE.**

*Form 3039.* Via Toronto, Montreal, St. Lambert, Newport, St. Johnsbury, Lunenburg, and Bethlehem..... **\$19.10**

**QUEBEC.**

*Form X 7.* Via Toronto, Rail or Steamer..... **\$14.00**

**QUEBEC and back to MONTREAL.**

*Form X 8.* Via Toronto, Rail or Steamer..... **\$16.00**

**SARATOGA.**

*Form X 18.* Via Toronto, Montreal, Rouse's Point, Plattsburg, Lake Champlain and Lake George..... **\$22.35**

**SARATOGA.**

*Form X 23.* Via Toronto, Montreal, Rouse's Point, Plattsburg, Lake Champlain and Fort Ticonderoga ... **\$19.75**

**SARATOGA.**

*Form X 28.* Via Toronto, Montreal, Gorham, Stages to Glen House and Tip Top House, Mt. Washington R.R. to Base of Mountain, Crawford and Fabyan Houses, Bethlehem, Profile House, Bethlehem, Wells River, White River Junction, Burlington, and via Lake Champlain, Lake George and Glens Falls..... **\$46.25**

**SARATOGA.**

*Form X 52.* Via Toronto, Montreal, St. Johns, Burlington, Lake Champlain and Fort Ticonderoga..... **\$19.75**

**SARATOGA.**

*Form X 53.* Via Toronto, Montreal, St. Johns, Burlington, Lake Champlain and Lake George..... **\$22.35**

**SARATOGA.**

*Form X 54.* Via Toronto, Ogdensburg, St. Albans, Burlington, Lake Champlain and Fort Ticonderoga.... **\$19.75**

**SARATOGA.**

*Form X 55.* Via Toronto, Ogdensburg, St. Albans, Burlington, Lake Champlain and Lake George ..... **\$22.35**

**SARATOGA.**

*Form 2909.* Via Toronto, Montreal, St. Johns, St. Albans, Burlington, Rutland and Whitehall... **\$19.75**

**SARATOGA.**

*Form 3026.* Via Toronto, Montreal, Gorham, Stage to Glen House, and to the Summit of Mount Washington, Rail to Base of Mountain, Fabyan's, Bethlehem, Profile House, Stage to Plymouth, Rail to Wells River, White River Junction, Montpelier, Burlington, Lake Champlain Steamer to Fort Ticonderoga, Rail to Baldwin, Lake George, Steamer to Caldwell, Stage to Glen's Falls, Rail to Saratoga..... **\$47.75**

SIDE ISSUES  
TO  
**RIVER SAGUENAY,**  
THOUSAND ISLANDS,  
**RANGELEY LAKES,**  
Rapids of River St. Lawrence, &c.

**CRAWFORD HOUSE to SARATOGA.**

*Form 3025.* Via Rail to North Conway, Wolfboro', Steamer to Weirs, Rail to Plymouth, Stage to Profile House, Rail to Bethlehem, Wells River, White River Junction, Montpelier, Burlington, Lake Steamer to Fort Ticonderoga. Rail to Baldwin, Lake George Steamer to Caldwell, Stage to Glen's Falls and Rail to Saratoga..... **\$23.25**

**FABYAN'S to BOSTON.**

*Form 3121.* Via Bethlehem, Profile, Plymouth, Concord, Nashua and Lowell..... **\$9.30**

**FABYAN'S to PROFILE HOUSE.**

*Form 3119.* Via Bethlehem ..... **\$2.00**

**FABYAN'S to PROFILE HOUSE and return.**

*Form 3120.* Via Bethlehem. .... **\$4.00**

**GLEN HOUSE TO UPPER DAM and return.**

*Form 2790.* Via Gorham, Bryant's Pond, Andover and South Arm, returning same way..... **\$12.00**

**GLEN HOUSE TO UPPER DAM and return, via Dixville Notch. Form 2791.** Via Gorham, Bry Pond, Andover, South Arm, Upper Dam, Middle Dam, Sunday Cove, Errol Dam, Colebrook, No. Stratford and Gorham,

**\$14.50**

**GLEN HOUSE TO UPPER DAM and return, via Dixville Notch. Form 2792.** Reverse of 2791.....

**\$14.50**

**GLEN HOUSE TO UPPER DAM and return.**

*Form 2793.* Via Gorham, Bethel, Upton, Sunday Cove, Middle Dam and Upper Dam, returning same way..... **\$14.00**

**GLEN HOUSE TO UPPER DAM and return.**

*Form 2794.* Via Gorham, Bethel, Upton, Sunday Cove, Middle Dam, Upper Dam, South Arm, Andover, Bryant's Pond and Gorham..... **\$13.00**

## Side Issues to River Saguenay, &amp;c.

<b>GLEN HOUSE TO UPPER DAM and return.</b> <i>Form 2795.</i> Reverse of 2794.....	<b>\$13.00</b>
<b>GLEN HOUSE TO UPPER DAM and return.</b> <i>Form 2798.</i> Via Gorham, Bethel, Upton, Sunday Cove, Middle Dam, Upper Dam, Middle Dam, Sunday Cove, Errol Dam, Colebrook, No. Stratford and Gorham.....	<b>\$15 50</b>
<b>GLEN HOUSE TO UPPER DAM and return.</b> <i>Form 2799.</i> Reverse of 2798.....	<b>\$15.50</b>
<b>GLEN HOUSE TO MONTREAL.</b> <i>Form X 157</i> .....	<b>\$8.70</b>
<b>GLEN HOUSE TO QUEBEC.</b> <i>Form X 158</i> .....	<b>\$9.45</b>
<b>GLEN HOUSE TO PORTLAND.</b> <i>Form X 160</i> .....	<b>\$5.00</b>
<b>GLEN HOUSE TO PROFILE HOUSE.</b> <i>Form 161,</i>	<b>\$5.65</b>
<b>MONTREAL to CORNWALL and return.</b> <i>Form 2501</i> .....	<b>\$3.35</b>
<b>MONTREAL to KINGSTON and return.</b> <i>E 2500.</i> Grand Trunk Railway to Kingston, Steamer through Thousand Islands and Rapids of St. Lawrence to Montreal.....	<b>\$8.00</b>
<b>MONTREAL to LACHINE and return.</b> Rail to Lachine, Steamer (shooting the Rapids).....	<b>\$ .50</b>
A train Leaves Montreal at 7 A.M., daily, and connects at Lachine with the new steamer "Beauharnois," which leaves at 8 A.M., shoots the "Lachine Rapids" (the finest of the St. Lawrence), passes under the Victoria Bridge, and arrives at Montreal about 9 A.M. This is the only boat which runs the Lachine Rapids during the entire season, and which can be depended on to run at a regularly advertised hour. The train arrives at Lachine at 7.30 A.M., which gives passengers ample time to obtain a comfortable breakfast at a hotel directly opposite the Steamboat Wharf.	
<b>MONTREAL to OTTAWA.</b> <i>Form 2980.</i> Via G. T. Ry. to Lachine, O. R. N. Co. Steamer to Ottawa.....	<b>\$2.50</b>
<b>MONTREAL to OTTAWA and return.</b> <i>Form 2982.</i> Via G. T. Ry. to Lachine, O. R. N. Co. Steamer to Ottawa, returning by O. R. N. Co. Steamer to Lachine, G. T. R. or Steamer to Montreal.....	<b>\$4.00</b>
<b>MONTREAL to PRESCOTT and return.</b> <i>Form 2502</i> .....	<b>\$5.60</b>
<b>MONTREAL to QUEBEC and return.</b> <i>Form X 41.</i> Via Rail or Steamer.....	<b>\$4.00</b>



\$13.00

\$15.50

\$15.50

\$8.70

\$9.45

\$5.00

\$5.65

\$3.35

\$8.00

\$ .50

Lachine  
boats the  
der the  
he only  
d which  
he train  
time to  
amboat

\$2.50

\$4.00

\$5.60

\$4.00

**NORTH STRATFORD (G. T. R.) to RANGELEY LAKES and BRYANT'S POND (G. T. R.)**

*Form 3166.* Via Stage North Stratford to Colebrook, Dixville Notch, Errol Dam, Steamer to Sunday Cove, Middle Dam, Upper Dam Landing and South Arm of Lake, Stage to Andover and Bryant's Pond..... **\$9.00**

**OTTAWA to MONTREAL.**

*Form 2979.* Via O. R. N. Co. Steamer to Lachine, G. T. Ry. or Steamer to Montreal ..... **\$2.50**

**OTTAWA to MONTREAL and return.**

*Form 2981.* Via O. R. N. Co. Steamer to Lachine, G. T. Ry. or Steamer to Montreal, returning by G. T. Ry. to Lachine, O. R. N. Co. Steamer to Ottawa ..... **\$4.00**

**PORT KENT to AUSABLE CHASM and return.**

*Form X 96.* Via Stage..... **\$ .75**

**PRESCOTT to OTTAWA and return.**

*Form X 97.* Via St. Lawrence and Ottawa Railway... **\$3.15**

**QUEBEC to CACOUNA and return.**

*Form X 65.* Via Steamer from Quebec to Rivière du Loup and Intercolonial R.R. or all Rail..... **\$4.50**

**QUEBEC to HA-HA BAY and return.**

*Form X 67.* Via Steamer or Rail from Quebec to Rivière du Loup and Steamer..... **\$8.00**

**QUEBEC to TADOUSAC and return.**

*Form X 66.* Via Rail or Steamer from Quebec to Rivière du Loup and Steamer..... **\$5.00**

**RICHMOND to QUEBEC and back.**

*Form X 56.* Via Grand Trunk Railway ..... **\$3.00**

**RIVIERE DU LOUP to HA-HA BAY and return.**

*Form 2761.* ..... **\$5.00**

**TORONTO to COUCHICHING and return.**

*Form 2569.* Via Northern Railway, Toronto to Lake Couchiching and return..... **\$3.50**

**TORONTO to NIAGARA FALLS and return.**

*Form X 87.* Steamer to Lewiston, Rail to Falls. Return same way..... **\$3.00**

**TORONTO to NIAGARA FALLS and return.**

All Rail. G. W. Railway..... **\$4.20**

**ST. HILAIRE TO IROQUOIS HOUSE and return (Beloeil Mt.)**

*Form 2729.* Via Omnibus..... **\$ .50**

# EXCURSIONS

VIA

## Montreal, Quebec and the Lower Provinces

### **BOSTON to HALIFAX.**

*Form 2770.* Via Portland, Quebec and Pictou..... **\$21.15**

### **HALIFAX to BOSTON.**

*Form 2771.* Reverse of 2770..... **\$21.15**

### **BOSTON to HALIFAX.**

*Form 2772.* Via Portland (B. & M. or E. R.R.), Quebec (G. T.), Pt. Du Chene (Inter. Ry.), Summerside (Steamer), Charlottetown (P. E. I. Ry.), Pictou (Steamer), to Halifax (Inter. Ry.)..... **\$25.00**

### **HALIFAX to BOSTON.**

*Form 2773.* Reverse of 2772..... **\$25.00**

### **BOSTON to HALIFAX.**

*Form 2774.* Via Portland (B. & M. or E. R.R.), Quebec (G. T.), to Halifax direct (Inter. Ry.)..... **\$21.00**

### **HALIFAX to BOSTON.**

*Form 2775.* Reverse of 2774..... **\$21.00**

### **BOSTON to HALIFAX.**

*Form 2776.* Via Portland, Montreal, Quebec and Pictou, **\$22.65**

### **HALIFAX to BOSTON.**

*Form 2777.* Reverse of 2776..... **\$22.65**

### **BOSTON to HALIFAX.**

*Form 2778.* Via Portland (B. & M. or E. R.R.), Montreal (G.T.), Quebec (Rail or Boat), Pt. Du Chene (Inter. Ry.), Summerside (Stmr.), Charlottetown (P. E. I. Ry.), Pictou (Steamer), to Halifax (Inter. Ry.)..... **\$26.50**

### **HALIFAX to BOSTON.**

*Form 2779.* Reverse of 2778. .... **\$26 50**

### **BOSTON to HALIFAX.**

*Form 2780.* Via Portland (B. & M. or E. R.R.), Montreal (G. T.), Quebec (Rail or Boat), to Halifax direct (Inter. Ry.)..... **\$22.00**

### **HALIFAX to BOSTON.**

*Form 2781.* Reverse of 2780..... **\$22.00**

Excursions via Montreal, Quebec, &c.

**BOSTON to HALIFAX.**

*Form 2782.* Via Portland (B. & M. or E. R.R.), St. John, N. B. (Steamer), to Halifax (Inter. Ry)..... **\$10.50**

**HALIFAX to BOSTON.**

*Form 2783.* Reverse of 2782..... **\$10.50**

**BOSTON to HALIFAX.**

*Form 2784.* Via Rail to Portland and Steamer..... **\$**

**HALIFAX to BOSTON.**

*Form 2785.* Reverse of 2784..... **\$**

The above to be sold only in connection with other Tickets over the G. T. Ry.

nces

\$21.15

\$21.15

\$25.00

\$25.00

\$21.00

\$21.00

\$22.65

\$22.65

\$26.50

\$26.50

\$22.00

\$22.00

## VARIOUS EXCURSION ROUTES at Reduced Rates.

### **BOSTON to ANDOVER and return.**

*Forms 2510; 3040.* Via Steamer between Boston, and Portland, G. T. R. to Bryant's Pond, and Stage; Return same way . . . . . **\$8.00**

### **BOSTON to ANDOVER and return.**

*Forms. 2511; 2537.* B. & M. R.R., or Eastern Ry's between Boston and Portland; thence same as 2510 . . . . . **\$9.00**

### **BOSTON to BETHEL and return.**

*Forms 2742; 2743.* Via B. & M. or Eastern Ry's between Boston and Portland . . . . . **\$8.00**

### **BOSTON to BETHEL and return.**

*Forms 2741; 3040.* Via Steamer between Boston and Portland . . . . . **\$7.00**

### **BOSTON to BRYANT'S POND and return.**

*Form 2747; 3040.* Via Steamer between Boston and Portland . . . . . **\$6.50**

### **BOSTON to BRYANT'S POND and return.**

*Forms 2745; 2746.* Via B. & M. or Eastern Ry's between Boston and Portland . . . . . **\$7.50**

### **BOSTON to CHICAGO and return.**

Going either via Portland, Gorham (White Mountains) to Montreal; or via Lowell, Nashua, Concord, White River Junction and Central Vermont R'y to Montreal; or via Lowell, Nashua, Concord, Plymouth, Newport and South Eastern R'y to Montreal; or via Fitchburg, Bellows Falls and Rutland to Montreal; thence Rail via Toronto, Detroit and Michigan Central R'y to Chicago; Returning via Michigan Central R'y to Detroit, Rail to Buffalo, N.Y. C. & H. R. R'y to Albany, Hoosac Tunnel Route or Boston and Albany R'y to Boston . . . . . **\$41.00**

### **BOSTON to CHICAGO and return.**

Reverse of the above . . . . . **\$41.00**

### **BOSTON to DETROIT and return.**

Choice of routes from and to Boston (same as above) . . . . . **\$32.00**

### **BOSTON to DULUTH or FORT WILLIAM and return.**

*Form E M 568 R.* Via Steamer from Sarnia . . . . . **\$57.25**

### **BOSTON to GRAND VIEW HOUSE and return.**

*Form* Via All Rail . . . . . **\$7.00**

### **BOSTON to GROVETON and return.**

*Form 3041.* Via Lowell, Nashua, Concord and Plymouth; Returning via Gorham and Portland; all rail . . . . . **\$11.20**

### **BOSTON to GROVETON and return.**

*Form 3042.* Reverse of 3041 . . . . . **\$11.20**

## Excursion Routes at Reduced Rates.

19

	<b>BOSTON to GROVETON and return.</b>		
	<i>Form 3043.</i> Via Portland; all rail.....		<b>\$10.20</b>
	<b>BOSTON to LAKE AUBURN HOUSE and return.</b>		
	<i>Form 2995.</i> Rail between Boston and Portland; Stage and Ferry.....		<b>\$7.00</b>
\$8.00	<b>BOSTON to MECHANICS FALLS and return.</b>		
	<i>Forms 2748; 2749.</i> Rail between Boston and Portland		<b>\$6.50</b>
	<b>BOSTON to MECHANIC FALLS and return.</b>		
\$9.00	<i>Forms 2750; 3040.</i> Via Steamer between Boston and Portland .....		<b>\$4.50</b>
\$8.00	<b>BOSTON to MONTREAL and return.</b>		
	<i>Form X 110.</i> Via Portland, Grand Trunk and Vermont Central Railways.....		<b>\$16.00</b>
\$7.00	<b>BOSTON to MONTREAL and return.</b>		
	<i>Form X 111.</i> Via Vermont Central and Grand Trunk Railways.....		<b>\$16.00</b>
\$6.50	<b>BOSTON to MONTREAL and return.</b>		
	<i>Form X 112.</i> Via Portland, Grand Trunk Railway, Rutland and Burlington.....		<b>\$16.00</b>
\$7.50	<b>BOSTON to MONTREAL and return.</b>		
	<i>Form X 113.</i> Via Fitchburg, Rutland and Burlington, and Grand Trunk Railway.....		<b>\$16.00</b>
	<b>BOSTON to MONTREAL and return.</b>		
	<i>Form 2803.</i> Via Portland and Gorham (White Mts.)...		<b>\$15.00</b>
	<b>BOSTON to MONTREAL and return.</b>		
	<i>Form 2804.</i> Via B. & M. and G. T. Ry's, to Point Levi, Steamer to Montreal; return via Portland.....		<b>\$18.00</b>
\$11.00	<b>BOSTON to MONTREAL and return.</b>		
	<i>Form 2859.</i> B. & M. or E. and G. T. to Montreal, return via Groveton Junction, Concord and Nashua.....		<b>\$16.00</b>
\$41.00	<b>BOSTON to MONTREAL and return.</b>		
	<i>Form 2860.</i> Reverse of 2859.....		<b>\$16.00</b>
\$32.00	<b>BOSTON to MONTREAL.</b>		
	<i>Form 3095.</i> Via Lowell, Nashua, Concord, Wells River, Newport and So. Eastern Railway.....		<b>\$8.00</b>
\$57.25	<b>MONTREAL to BOSTON.</b>		
	<i>Form 3096.</i> Reverse of 3095.....		<b>\$8.00</b>
\$7.00	<b>BOSTON to MONTREAL.</b>		
	<i>Form 3109.</i> Via Fitchburg, Bellows Falls, Rutland, Saratoga, Fort Ticonderoga, Plattsburgh, and Rouse's Pt.		<b>\$13.65</b>
\$11.20	<b>MONTREAL to BOSTON.</b>		
	<i>Form 3110.</i> Reverse of 3109.....		<b>\$13.65</b>

## Excursion Routes at Reduced Rates.

**BOSTON to MONTREAL.**

*Form 3111.* Via Lowell, Nashua, W. R. Junction,  
Burlington, Fort Ticonderoga and Rouse's Point..... **\$13.00**

**MONTREAL to BOSTON.**

*Form 3112.* Reverse of 3111..... **\$13.00**

**BOSTON to MONTREAL.**

*Form 3113.* Via Fitchburg, Bellows Falls, Rutland,  
Saratoga, Glen's Falls, Caldwell, Baldwin, Ft. Ticonder-  
oga, Plattsburgh, Rouse's Point..... **\$15.00**

**MONTREAL to BOSTON.**

*Form 3114.* Reverse of 3113 ..... **\$15.00**

**BOSTON to MONTREAL.**

*Form 3146.* Via Portland and G. T. Railway..... **\$7.50**

**MONTREAL to BOSTON.**

*Form 3147.* Reverse of 3146..... **\$7.50**

**BOSTON to MONTREAL.**

*Form 3184.* Via Lowell, Nashua, Concord and White  
River Junction..... **\$8.00**

**MONTREAL to BOSTON.**

*Form 3185.* Reverse of 3184..... **\$8.00**

**BOSTON to MONTREAL.**

*Form 3186.* Via Lowell, Nashua, Concord, Wells River,  
Newport and So. Eastern Railway..... **\$8.00**

**MONTREAL to BOSTON.**

*Form 3187.* Reverse of 3186..... **\$8.00**

**BOSTON to MONTREAL.**

*Form 3188.* Via Portland, No. Conway, White Mount-  
ain Notch, Crawford's, Fabyan's and Groveton..... **\$11.25**

**MONTREAL to BOSTON.**

*Form 3189.* Reverse of 3188..... **\$11.25**

**BOSTON to MONTREAL.**

*Form 3190.* Via Portland, No. Conway, White Mount-  
ain Notch, Crawford's, Fabyan's, Groveton, Richmond  
and Quebec..... **\$13.75**

**MONTREAL to BOSTON.**

*Form 3191.* Reverse of 3190..... **\$13.75**

**BOSTON to MONTREAL.**

*Form 3192.* Via Portland and Quebec... **\$9.50**

**MONTREAL to BOSTON.**

*Form 3193.* Reverse of 3192..... **\$9.50**

BOS  
FMON  
FBOS  
FMON  
FBOS  
FMON  
FBOS  
FBOS  
FBOS  
FBOS  
FBOS  
FBOS  
FBOS  
FBOS  
FBOS  
FBOS  
FBOS  
F

Excursion Routes at Reduced Rates.

**BOSTON to MONTREAL.**

*Form 3194.* Via Sound Steamers to New York, N. Y. C. & H. R. R'y to Albany, thence Rail via Saratoga..... **\$15.00**

**MONTREAL to BOSTON.**

*Form 3195.* Reverse of 3194..... **\$15.00**

**BOSTON to MONTREAL.**

*Form 3196.* Via Fitchburg, Hoosac Tunnel and Saratoga **\$14.00**

**MONTREAL to BOSTON.**

*Form 3197.* Reverse of 3196..... **\$14.00**

**BOSTON to MONTREAL.**

*Form 3198.* Via Boston & Albany R'y and Saratoga.... **\$14.00**

**MONTREAL to BOSTON.**

*Form 3199.* Reverse of 3198..... **\$14.00**

**BOSTON to NORTH STRATFORD and return.**

*Forms 2704; 2705.* Via B. & M. or E. R.R. to Portland, G. T. Railway to North Stratford; Return same way..... **\$11.00**

**BOSTON to NORTH STRATFORD and return.**

*Forms 2706; 3040.* Via Steamer between Boston and Portland..... **\$10.00**

**BOSTON to POLAND SPRINGS and return.**

*Forms 2921; 2923.* Via Rail between Boston and Portland..... **\$6.00**

**BOSTON to POLAND SPRINGS and return.**

*Forms 2923; 3040.* Via Steamer between Boston and Portland..... **\$4.75**

**BOSTON to POLAND SPRINGS and Return.**

*Form 2934.* Via Lowell, Nashua, Rochester and Portland; Returning same way..... **\$6.00**

**BOSTON to POINT LEVI and return.**

*Form 2805.* Via Portland and Gorham (White Mts.)... **\$17.00**

**BOSTON to POINT LEVI and return.**

*Form 2806.* Via B. & M. and G. T. Ry's to Montreal, Steamer to Quebec; Return via G. T. and B. and M. Ry's. **\$18.00**

**BOSTON to POINT LEVI and return.**

*Form 2853.* Via Nashua, Concord, Wells River, Sherbrooke and G. T. R'y; Return via G. T. and B. & M. Ry's **\$19.00**

**BOSTON to POINT LEVI and return.**

*Form 2854.* Reverse of 2853..... **\$19.00**

**BOSTON to POINT LEVI and return.**

*Form 2855.* B. & M. or E. and G. T. R'y to Point Levi; Return via Groveton, Concord and Nashua..... **\$19.00**

\$13.00

\$13.00

\$15.00

\$15.00

\$7.50

\$7.50

\$8.00

\$8.00

\$8.00

\$8.00

\$11.25

\$11.25

\$13.75

\$13.75

\$9.50

\$9.50

**Excursion Routes at Reduced Rates.**

<b>BOSTON to POINT LEVI and return.</b>	
<i>Form 2856.</i> Reverse of 2855.....	<b>\$19.00</b>
<b>BOSTON to QUEBEC and return.</b>	
<i>Form X 131.</i> Via Portland and Grand Trunk Railway to Quebec, Rail or Steamer to Montreal, Vermont Central R.R. to Boston.....	<b>\$18.50</b>
<b>BOSTON to QUEBEC and return.</b>	
<i>Form X 131.</i> Via Vermont Central Railway to Montreal; Rail or Steamer to Quebec; Rail via Portland to Boston...	<b>\$18.50</b>
<b>BOSTON to QUEBEC.</b>	
<i>Form 3089.</i> Via Portland, Richmond Junction, and Pt. Levl.....	<b>\$8.50</b>
<b>QUEBEC to BOSTON.</b>	
<i>Form 3090.</i> Reverse of 3089.....	<b>\$8.50</b>
<b>BOSTON to QUEBEC.</b>	
<i>Form 3091.</i> Via Lowell, Nashua, Concord, Wells River, Newport and Montreal.....	<b>\$10.50</b>
<b>QUEBEC to BOSTON.</b>	
<i>Form 3092.</i> Reverse of 3091.....	<b>\$10.50</b>
<b>BOSTON to SOUTH PARIS and return.</b>	
<i>Forms 2741; 3040.</i> Via Steamer between Boston and Portland.....	<b>\$5.25</b>
<b>BOSTON to SOUTH PARIS and return.</b>	
<i>Forms 2739; 2740.</i> Via Rail between Boston and Portland.....	<b>\$7.00</b>

**W**

**BOST**  
Fo  
h  
i  
r

**BOST**  
Fo  
C  
t  
T  
L

**BOST**  
Fo  
h  
i  
E

**BOST**  
Fo  
N  
h

**BOST**  
Fo

**BOST**  
Fo  
h  
v  
R

**BOST**  
Fo  
h

**BOST**  
Fo  
R  
a  
t

**BOST**  
Fo



# EXCURSION ROUTES

TO AND FROM THE

## White Mountains.

\$19.00

\$18.50

\$18.50

\$8.50

\$8.50

\$10.50

\$10.50

\$5.25

\$7.00

**BOSTON to CRAWFORD HOUSE and return.**

*Form X 73.* Rail or Steamer to Portland, Rail to Gorham, Stage via Glen House to Tip Top House, Mt. Washington Railroad Summit to Base, rail to Crawford House; return same way ..... **\$30.00**

**BOSTON to CRAWFORD HOUSE and return.**

*Form X 132.* Eastern Railroad to North Conway, P. & O. R.R. to Crawford House, Rail to Base of Mt. Washington, Mt. Washington Railroad Base to Summit, Stage Tip Top House, via Glen House to Gorham, Rail to Portland, Rail or Steamer to Boston ..... **\$21.50**

**BOSTON to CRAWFORD HOUSE and return.**

*Form X 133.* Rail or Steamer to Portland, Rail to Gorham, Stage via Glen House to Tip Top House, Mt. Washington Railroad Summit to Base, Rail to Crawford House, P. & O. R.R. to North Conway, Eastern R.R. to Boston... **\$21.50**

**BOSTON to CRAWFORD HOUSE and return.**

*Form 3122.* Via Alton Bay, Centre Harbor, Wolfboro', No. Conway, Fabyan's, Base, Summit, Glen House, Gorham, and Portland..... **\$21.75**

**BOSTON to CRAWFORD HOUSE and return.**

*Form 3123.* Reverse of 3122 ..... **\$21.75**

**BOSTON to GLEN HOUSE and return.**

*Form X 164.* Rail or Steamer to Portland, Rail to Gorham, Stage to Glen House, and return to Gorham, Rail via Groveton to Bethlehem, Profile House, and Plymouth, Rail via Concord to Boston..... **\$21.50**

**BOSTON to GLEN HOUSE and return.**

*Form X 2517.* Rail or Steamer to Portland, Rail to Gorham, Stage to Glen House; return same way..... **\$11.00**

**BOSTON to GLEN HOUSE and return.**

*Form 2919.* B. & M. or Eastern R.R. to Portland, G. T. Railway to Gorham, Stage to Glen House, Glen Station, and No. Conway, Eastern Railroad to Wolfboro', Steamer to Centre Harbor and Alton Bay; B. & M. R.R. to Boston **\$16.25**

**BOSTON to GLEN HOUSE and return.**

*Form 2920.* Reverse of 2919 ..... **\$16.25**

<b>BOSTON to GLEN HOUSE and return.</b>	
<i>Form 3124.</i> Via Portland and Gorham; returning, Stage to Glen Station, Rail to No. Conway and Boston.....	<b>\$13.50</b>
<b>BOSTON to GLEN HOUSE and return.</b>	
<i>Form 3125.</i> Reverse of 3124.....	<b>\$13.50</b>
<b>BOSTON to GORHAM and return.</b>	
<i>Forms 2514; 3040.</i> Via Steamer between Boston and Portland.....	<b>\$7.00</b>
<b>BOSTON to GORHAM and return.</b>	
<i>Forms 2738; 2870.</i> Via Rail between Boston and Portland .....	<b>\$8.00</b>
<b>BOSTON to GORHAM and return.</b>	
<i>Form 2935.</i> Via Lowell, Nashua, Rochester and Portland; returning same way.....	<b>\$8.00</b>
<b>BOSTON to PROFILE HOUSE and return.</b>	
<i>Form X 165.</i> Rail or Steamer to Portland, Rail to Gorham, Stage to Glen House and return to Gorham, Rail via Groveton to Bethlehem, Profile House and return, Rail via Wells River, Concord, and Nashua.....	<b>\$21.50</b>
<b>BOSTON to PROFILE HOUSE.</b>	
<i>Form 3115.</i> Via Lowell, Nashua, Concord and Plymouth	<b>\$8.15</b>
<b>PROFILE HOUSE to BOSTON.</b>	
<i>Form 3116.</i> Reverse of 3115.....	<b>\$8.15</b>
<b>BOSTON to PROFILE HOUSE.</b>	
<i>Form 3117.</i> Via Portland, Gorham, Glen House, Summit, Base, Bethlehem.....	<b>\$15.50</b>
<b>PROFILE HOUSE to BOSTON.</b>	
<i>Form 3118.</i> Reverse of 3117.....	<b>\$15.50</b>

R

BOST  
Fo  
tBOST  
Fo  
tBOST  
Fo  
IBOST  
FoBOST  
FoDIXV  
FoBOST  
Fo  
JDIXV  
FoBOST  
Fo  
ABOST  
Fo  
MBOST  
Fo  
M  
SBOST  
Fo  
M  
SBOST  
Fo

# EXCURSIONS TO THE RANGELEY LAKES.

	<b>BOSTON TO COLEBROOK and return.</b>	
	<i>Form 3013.</i> Via Portland and North Stratford. Re- turning same way.....	<b>\$13.00</b>
	<b>BOSTON TO DIXVILLE NOTCH and return.</b>	
	<i>Form 2967.</i> Via Portland, Bethel, Upton, Errol Dam, to Dixville Notch. Returning same way.....	<b>\$15.50</b>
	<b>BOSTON TO DIXVILLE NOTCH and return.</b>	
	<i>Form 3011.</i> Via Portland, Bethel, Upton, Errol Dam, Dixville Notch, Colebrook, North Stratford and Portland.	<b>\$15.25</b>
	<b>BOSTON TO DIXVILLE NOTCH and return.</b>	
	<i>Form 3012.</i> Reverse of 3011.....	<b>\$15.25</b>
	<b>BOSTON to DIXVILLE NOTCH.</b>	
	<i>Form 3087.</i> Via Portland, No. Stratford and Colebrook.	<b>\$7.50</b>
	<b>DIXVILLE NOTCH to BOSTON.</b>	
	<i>Form 3088.</i> Reverse of 3087 .....	<b>\$7.50</b>
	<b>BOSTON to DIXVILLE NOTCH.</b>	
	<i>Form 3127.</i> Via Lowell, Nashua, Concord, Groveton Junction, No. Stratford and Colebrook. ....	<b>\$9.08</b>
	<b>DIXVILLE NOTCH to BOSTON.</b>	
	<i>Form 3128.</i> Reverse of 3127.....	<b>\$9.07</b>
	<b>BOSTON to INDIAN ROCK and return.</b>	
	<i>Form 2985.</i> Via Portland, Bryant's Pond, Andover, Arm of Lake and Upper Dam.....	<b>\$15.25</b>
	<b>BOSTON to INDIAN ROCK and return.</b>	
	<i>Form 3163.</i> Via Portland, Bethel, Upton, Sunday Cove, Middle Dam and Upper Dam; Returning same way .....	<b>\$17.25</b>
	<b>BOSTON to INDIAN ROCK and return.</b>	
	<i>Form 3164.</i> Via Portland, Bethel, Upton, Sunday Cove, Middle Dam and Upper Dam; Returning via Upper Dam, So. Arm, Andover, Bryant's Pond and Portland.....	<b>\$16.25</b>
	<b>BOSTON to INDIAN ROCK and return.</b>	
	<i>Form 3165.</i> Reverse of 3164.....	<b>\$16.25</b>

\$13.50

\$13.50

\$7.00

\$8.00

\$8.00

\$21.50

\$8.15

\$8.15

\$15.50

\$15.50

## Excursions to the Rangeley Lakes.

<b>BOSTON TO MAGALLOWAY and return.</b> <i>Form 2966.</i> Via Portland, Bethel and Upton. Re- turning same way.....	<b>\$14.50</b>
<b>BOSTON TO MAGALLOWAY and return.</b> <i>Form 3009.</i> Via Portland, Bryant's Pond, Andover, So. Arm, Middle Dam and Sunday Cove. Returning same way.	<b>\$16.50</b>
<b>BOSTON to MIDDLE DAM and return.</b> <i>Form 2983.</i> Via Portland, Bryant's Pond, Andover, Arm of Lake.....	<b>\$13.00</b>
<b>BOSTON to MIDDLE DAM and return.</b> <i>Form 3160.</i> Via Portland, Bethel, Upton and Sunday Cove; Returning same way.....	<b>\$14.50</b>
<b>BOSTON to MIDDLE DAM and return.</b> <i>Form 3161.</i> Via Portland, Bethel, Upton and Sunday Cove; Returning via So. Arm, Andover, Bryant's Pond and Portland.....	<b>\$13.75</b>
<b>BOSTON to MIDDLE DAM and return.</b> <i>Form 3162.</i> Reverse of 3161.....	<b>\$13.75</b>
<b>BOSTON to RANGELEY OUTLET and return.</b> <i>Form 2986.</i> Via Portland, Bryant's Pond, Andover, Arm of Lake, Upper Dam, Indian Rock, Rangeley Outlet or Mountain View House. Returning via Greenvale, or Rangeley, Phillips, Farmington and Portland.....	<b>\$15.25</b>
<b>BOSTON to RANGELEY OUTLET and return.</b> <i>Form 2987.</i> Via Portland, Farmington and Phillips. Returning via Andover, Bryant's Pond and G.T. Ry....	<b>\$15.25</b>
<b>BOSTON TO SOUTH ARM and return.</b> <i>Form 3010.</i> Via Portland, Bryant's Pond and Andover Return same way.....	<b>\$12.00</b>
<b>BOSTON to UMBAGOG LAKES and return.</b> <i>Forms 2916; 2917.</i> Via Rail between Boston and Portland.....	<b>\$11.00</b>
<b>BOSTON to UMBAGOG LAKES and return.</b> <i>Form 2918.</i> Via Steamer between Boston and Portland.	<b>\$10.00</b>
<b>BOSTON TO UPPER DAM and return, via Dixville Notch.</b> <i>Form 2800.</i> Via Portland, Bryant's Pond, An- dover, So. Arm, Upper Dam, Middle Dam, Sunday Cove, Errol Dam, Colebrook, N. Stratford and Portland.....	<b>\$17.75</b>
<b>BOSTON TO UPPER DAM via Dixville Notch and return.</b> <i>Form 2801.</i> Reverse of Form 2800.....	<b>\$17.75</b>
<b>BOSTON TO UPPER DAM via Dixville Notch and return.</b> <i>Form 2802.</i> Via Portland, Bryant's Pond, Andover, South Arm, Upper Dam, Middle Dam, Sunday Cove, Errol Dam to Dixville Notch. Returning same way.	<b>\$20.50</b>

**BOSTON**  
*Form*  
D  
U

**BOSTON**  
*Form*  
M

**BOSTON**  
*Form*  
S  
U

**BOSTON**  
*Form*

**BOSTON**  
*Form*  
A

**BOSTON**  
between  
desire t

The F  
"John  
India W  
Portland

Passen  
tains, m  
this a p  
comfort  
finest o  
ton in se

Bagg  
Grand T  
gers.

## Excursions to the Rangeley Lakes.

27

**BOSTON TO UPPER DAM and return.**

*Form 2964.* Via Portland, No. Stratford, Colebrook, Dixville Notch, Errol Dam, Sunday Cove, Middle Dam to Upper Dam, returning same way..... **\$21.50**

**BOSTON TO UPPER DAM and return.**

*Form 2965.* Via Portland, Bethel, Upton, Sunday Cove, Middle Dam to Upper Dam. Returning same way..... **\$16.00**

**BOSTON TO UPPER DAM and return.**

*Form 2968.* Via Portland, Bryant's Pond, Andover, South Arm, Upper Dam, Middle Dam, Sunday Cove, Upton, Bethel and Portland..... **\$15.00**

**BOSTON TO UPPER DAM and return.**

*Form 2969.* Reverse of 2968..... **\$15.00**

**BOSTON to UPPER DAM and return.**

*Form 2984* Via Portland, Bryant's Pond, Andover, Arm of Lake..... **\$14.00**

**NOTE.**—The fares as shown in the foregoing Routes are by **Rail** between Boston and Portland, (unless otherwise specified). If passengers desire to go by Steamer, the fares will be **\$1.00** less.

The Portland Steam Packet Company's favorite Side-wheel Steamers, "**John Brooks**" and "**Forest City**," form a daily line, — leaving India Wharf, Boston, every evening at **7.00 P.M.**, and Franklin Wharf, Portland, every evening at **7.00 P.M.**, Sundays excepted.

Passengers to or from Lewiston, Poland Springs, the White Mountains, Montreal, Quebec, &c., via the Grand Trunk Railway, will find this a pleasant as well as a favorite route, whereby they can enjoy a comfortable night's rest, beside the additional enjoyment of one of the finest ocean trips on the Eastern coast, and arrive at both Portland and Boston in season to connect with the early trains.

Baggage is transferred at Portland from the Steamboat Wharf to the Grand Trunk Railway Depot "free," and without any trouble to passengers.

\$14.50  
\$16.50  
\$13.00  
\$14.50  
\$13.75  
\$13.75  
\$15.25  
\$15.25  
\$12.00  
\$11.00  
\$10.00  
\$17.75  
\$17.75  
\$20.50

# EXCURSION RATES

—FROM—

## PORTLAND.

<b>PORTLAND to BETHEL, ME., and return.....</b>	<b>\$4.50</b>
“ <b>BRYANT'S POND, ME., and return....</b>	<b>4.00</b>
“ <b>COLEBROOK and return. Form 3013...</b>	<b>10.00</b>
“ <b>CHICAGO and return.....</b>	<b>36.00</b>
“ <b>DETROIT and return.....</b>	<b>28.00</b>
“ <b>DIXVILLE NOTCH and ret. Form 2057.</b>	
“ <b>DIXVILLE NOTCH and ret. Form 3011.</b>	<b>12.25</b>
“ <b>DIXVILLE NOTCH and ret. Form 3012.</b>	<b>12.25</b>
“ <b>GLEN HOUSE and return. Form X 203..</b>	<b>8.00</b>
“ <b>GORHAM, ME., and return.....</b>	<b>5.00</b>
“ <b>INDIAN ROCK and return. Form 2985..</b>	<b>12.25</b>
“ <b>INDIAN ROCK and return. Form 3163..</b>	<b>14.25</b>
“ <b>INDIAN ROCK and return. Form 3164..</b>	<b>13.25</b>
“ <b>INDIAN ROCK and return. Form 3165..</b>	<b>13.25</b>
“ <b>LEWISTON, ME., and return .....</b>	<b>1.60</b>
“ <b>LONDON and return.....</b>	<b>25.00</b>
“ <b>MAGALLOWAY and return. Form 2966..</b>	<b>11.50</b>
“ <b>MAGALLOWAY and return. Form 3009..</b>	<b>13.50</b>
“ <b>MIDDLE DAM and return. Form 2883..</b>	<b>10.00</b>
“ <b>MIDDLE DAM and return. Form 3160..</b>	<b>11.50</b>
“ <b>MIDDLE DAM and return. Form 3161..</b>	<b>10.75</b>
“ <b>MIDDLE DAM and return. Form 3162..</b>	<b>10.75</b>
“ <b>MONTREAL and return. Form X 201....</b>	<b>12.50</b>
“ <b>NEW GLOUCESTER, ME., and return.</b>	<b>1.25</b>
“ <b>NO. STRATFORD and return .....</b>	<b>8.00</b>
“ <b>POINT LEVI and return .....</b>	<b>14.15</b>
“ <b>QUEBEC and return. Form X 205.....</b>	<b>15.00</b>
“ <b>RANGELEY OUTLET and ret. Form 2986</b>	<b>12.25</b>
“ <b>RANGELEY OUTLET and ret. Form 2987</b>	<b>12.25</b>
“ <b>SARNIA and return... ..</b>	<b>28.00</b>
“ <b>SOUTH ARM and return. Form 3010....</b>	<b>9.00</b>

ES

\$4.50  
4.00  
10.00  
36.00  
28.00  
  
12.25  
12.25  
8.00  
5.00  
12.25  
14.25  
13.25  
13.25  
1.60  
25.00  
11.50  
13.50  
10.00  
11.50  
10.75  
10.75  
12.50  
1.25  
8.00  
14.15  
15.00  
66 12.25  
87 12.25  
38.00  
9.00

Excursion Rates from Portland.

PORTLAND to SO. PARIS, ME., and return.....	\$3.15
" UMBAGOG LAKE and return. Form 2917	8.00
" UPPER DAM and return. Form 2800 ....	14.75
" UPPER DAM and return. Form 2801 ....	14.75
" UPPER DAM and return. Form 2802 ....	17.50
" UPPER DAM and return. Form 2964 ..	18.50
" UPPER DAM and return. Form 2965 . . .	13.00
" UPPER DAM and return. Form 2968 . . .	12.00
" UPPER DAM and return. Form 2969 . . .	12.00
" UPPER DAM and return. Form 2984 . . .	11.00
" YARMOUTH, ME., and return. ....	.50

# Houston & Texas Central Ry.

THE TRUNK LINE OF TEXAS.

RECEIVING BUSINESS VIA

**ST. LOUIS and DENISON, ❖❖❖❖**

OR VIA

**❖❖❖❖ NEW ORLEANS and HOUSTON.**

The main Line running through the centre of the State, from the Northern to the Southern boundary, with its branch to **AUSTIN**, the Capital, and to **WACO**, and with its Extension running West from Waco into Western Central Texas, makes a total of 651 miles in operation, reaching and tributary to the following important points:

**DENISON, SHERMAN, MCKINNEY, DALLAS,**  
**FT. WORTH, WEATHERFORD, CORSICANA,**  
**BREMOND, MARLIN,**  
**WACO, WHITNEY, MORGAN, CISCO,**  
**HUTCHINSON, MT. AIRY,**  
**CALVERT, HEARNE, AUSTIN, HEMPSTEAD,**  
**BRENIHAM, HOUSTON,**  
**SAN ANTONIO and GALVESTON,**

And into and through the

## Best Farming Country in Texas.

### MILLIONS OF ACRES OF LAND

—AT—

**\$1.00 and Upwards per Acre.**

Come and see it for yourselves.

— **BUY TICKETS TO WACO.** —

Cheap Rates of Fare from all points in the United States and Canada to Texas.

See that your tickets read via the **Houston & Texas Central Railway** via Denison or Houston.

**Pullman Palace Sleeping Cars** between St. Louis and Houston without change.

For state map, and general information as to rates of fare, locations, etc., apply to

**F. L. MANCHESTER,**

*Gen'l Eastern Agent,*

**419 Broadway, New York.**

**C. B. GRAY,**

*Asst. Gen'l Pass. Agt.*

**J. WALDO,**

*Gen'l Pass. Agent.*

**HOUSTON, TEXAS.**



TAKE THE

31

Pullman 16-Wheel Palace Sleeping Cars,  
C. B. & Q. Palace Drawing-Room Cars,  
With Horton's Reclining Chairs, No Extra  
Charge for Seats in Reclining Chairs,  
The Famous C. B. & Q. Palace Dining Cars.



**3** RUNNING  
THROUGH PASSENGER TRAINS  
DAILY.  
**3**

THE OLD, RELIABLE AND FAVORITE ROUTE  
— BETWEEN —

# CHICAGO

COUNCIL BLUFFS, OMAHA, LINCOLN, ST. JOSEPH,  
ATCHISON, TOPEKA, KANSAS CITY,  
AND ALL POINTS IN

**KANSAS, NEBRASKA,**

Colorado, Wyoming, Montana, Nevada,  
Arizona, Idaho, and

**CALIFORNIA.**

THE SHORTEST, SPEEDIEST AND MOST COMFORTABLE ROUTE

**Via HANNIBAL to**

Fort Scott, Denison, Dallas, Houston, Austin, San Antonio, and

**GALVESTON.**

Steel Rails and Superior Equipment, combined with their Great Through  
Car Arrangement, makes this, above all others,  
the favorite Route to the

**SOUTH, SOUTH-WEST, AND THE FAR WEST.**

TRY IT, and you will find Travelling a LUXURY  
INSTEAD OF A DISCOMFORT.

All information about Rates of Fare, Sleeping Car Accommodations, and  
Time Tables, will be cheerfully given by applying to

**J. Q. A. BEAN, Gen'l Eastern Agt., 306 Washington Street, Boston.**

**PERCEVAL LOWELL, Gen'l Pass. Agt., CHICAGO.**

# Chicago, Milwaukee & St. Paul Railway.

**THE GREAT THROUGH LINE.**

## CHICAGO, NORTHWEST WISCONSIN,

**NORTHERN IOWA, MINNESOTA,**

*Dakota, Manitoba and the Black Hills.*

Passing through a finer country, with grander scenery, and connecting more business centres and pleasure resorts than any other Northwestern Line. Connecting in Chicago with all Eastern and Southern Lines.

## THE ONLY THROUGH LINE

BETWEEN

*Chicago, Milwaukee, Sparta, La Crosse, Winona, Madison, McGregor, Owatonna, St. Paul and Minneapolis.*

THE ONLY THROUGH RAIL LINE via Milwaukee, the Commercial Metropolis of Wisconsin.

THROUGH TICKETS BETWEEN

**CHICAGO, ST. PAUL or MINNEAPOLIS,**

ARE GOOD EITHER VIA

Oconomowoc, Watertown, Portage, Kilbourn City, Tomah, Sparta, La Crosse, Winona, Wabasha, Reed's Landing, Lake City, Red Wing, Hastings, &c. or via Waukesha, Whitewater, Madison, Prairie du Chien, McGregor, Austin, Owatonna, Faribault, &c.

The first route traverses the valley of the Upper Mississippi from La Crosse to Minneapolis, along the shore of Lake Pepin, and all the *Grand Scenery of that region.*

The other route passes through the Garden of Minnesota and Iowa.

## Palace Sleeping Cars and Coaches.

UPHOLSTERED SECOND-CLASS CARS.

*Westinghouse latest improved Automatic Air-Brake, with Miller Safety Platforms and Couplings, on all Cars.*

THOROUGHLY BALLASTED STEEL-RAIL TRACK.

THIS COMPANY issue annually a book called the "Tourist's Manual to the Health and Pleasure Resorts of the Golden Northwest," which can be had FREE on application to

**JOS. R. HIXSON.**

Gen. New Eng. Agt.

**CHAS. A. BROWN,**

Pass. Agt., 306 Washington St., Boston.

A. V. H. CARPENTER, G. P. & T. Agt., Milwaukee, Wis.

EXCURSION SEASON OF 1881.

FROM BOSTON.

TOURISTS' TICKETS

—VIA—

New York

Philadelphia

Hudson River

Niagara Falls

Toronto

Lake Ontario

River St. Lawrence with its

Rapids and Thousand Islands

Montreal

Quebec

River Saguenay

Lake Champlain

Lake George

Saratoga

White Mountains

Profile House

Crawford House

Glen House

Summit Mt. Washington

Lake Winnipiseogee

Lake Umbagog and the

Rangeley Lakes.

—ALSO—

To Chicago and Detroit and Return.

THE

GRAND TRUNK RAILWAY

IS THE

GREAT THROUGH ROUTE  
BETWEEN THE EAST AND WEST.

Fares from BOSTON or PORTLAND to CHICAGO and all points West

CHEAPER THAN BY ANY OTHER ROUTE.

FULL INFORMATION CHEERFULLY GIVEN.

lway.

NE.

NSIN,

Hills.

etting more  
tern Line.

INE

Madison,  
lis.

ommercial

OLIS,

Sparta, La  
Wing,  
rie

from La  
e Grand

owa.

ches.

with Mil-  
s.

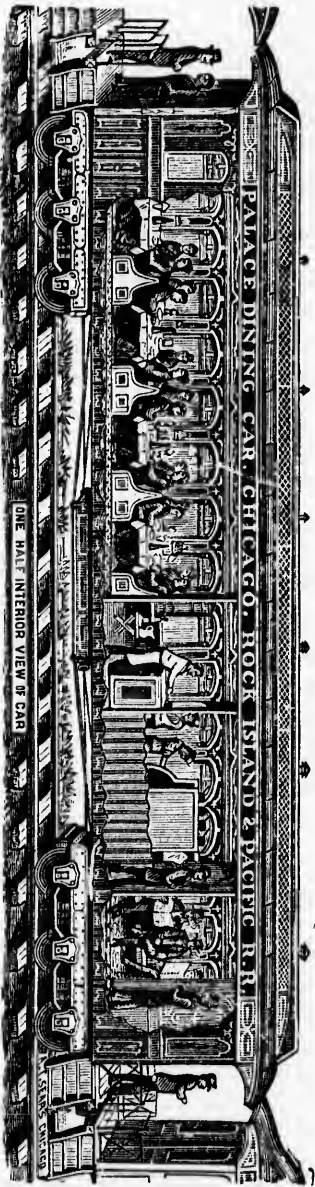
ACK.

t's Man-  
North-

St., Boston.

S.

# ROCK ISLAND ROUTE.



## THE CHICAGO, ROCK ISLAND & PACIFIC R. R.

Between CHICAGO and COVENTRY, BLUFFS, KANSAS CITY, ATCHISON and LEAVENWORTH, is the GREAT STEEL LINK in the MIGHTY CHAIN stretching across the Continent from the Atlantic to the Pacific.

Two Through Express Trains each way are run over its perfect track, and every appliance for the safety and comfort of its patrons is provided.

PRULMAN PALACE SLEEPING COACHES, RY'S THROUGH, and to all Express Trains is attached one of those FAMOUS PALACE DINING CARS for which this Great Route has become renowned.

This is the Only Railroad Owned by One Company Running Through Cars, from Chicago into the State of Kansas Without Change.

Its connections are made in Union Depots, and its tickets are sold at all Coupon Ticket Offices.

**A. KIMBALL, Gen'l Sup't.**

**E. ST. JOHN, Gen'l Tkt. and Pass. Ag't, Chicago.**

If you are going to Kansas, Nebraska, Colorado, Mexico, Arizona, Wyoming, Utah, Montana, Dakota, Nevada, Oregon, California, China or Japan, ask for Tickets via the "GREAT ROCK ISLAND ROUTE."

THE DIRECT AND POPULAR ROUTE FOR ALL POINTS IN

**Kansas, New Mexico, Utah, Montana, California and Oregon.**

**W. H. JENNEY, New England Passenger Agent, 240 Washington St., Boston, Mass.**

We run Palace Sleeping Cars for sleeping purposes, and Dining Cars for eating purposes only. Seventy-Five Cents pays for an entire meal. Do not confound these Cars with Hotel Cars.

