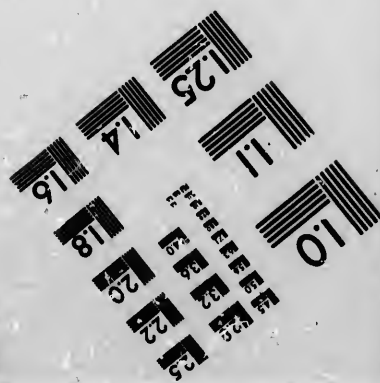
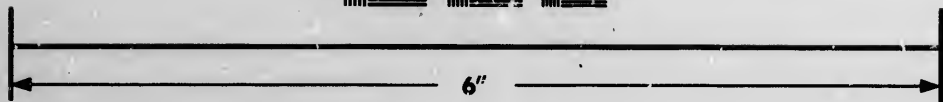
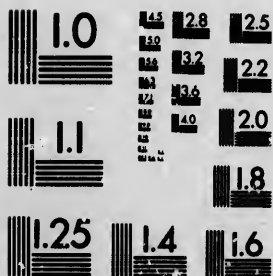


**IMAGE EVALUATION
TEST TARGET (MT-3)**



**Photographic
Sciences
Corporation**

23 WEST MAIN STREET
WEBSTER, N.Y. 14580
(716) 872-4513

1.5
1.8
2.0
2.2
2.5

**CIHM/ICMH
Microfiche
Series.**

**CIHM/ICMH
Collection de
microfiches.**



Canadian Institute for Historical Microreproductions / Institut canadien de microreproductions historiques

10
01

© 1987

The copy filmed here has been reproduced thanks to the generosity of:

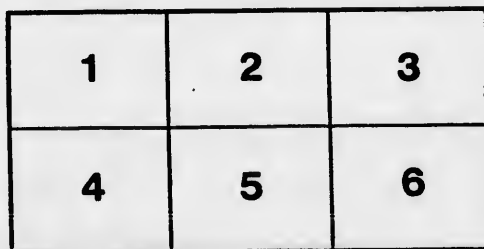
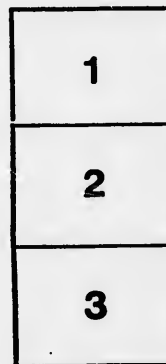
Metropolitan Toronto Library
Canadian History Department

The images appearing here are the best quality possible considering the condition and legibility of the original copy and in keeping with the filming contract specifications.

Original copies in printed paper covers are filmed beginning with the front cover and ending on the last page with a printed or illustrated impression, or the back cover when appropriate. All other original copies are filmed beginning on the first page with a printed or illustrated impression, and ending on the last page with a printed or illustrated impression.

The last recorded frame on each microfiche shall contain the symbol \rightarrow (meaning "CONTINUED"), or the symbol ∇ (meaning "END"), whichever applies.

Maps, plates, charts, etc., may be filmed at different reduction ratios. Those too large to be entirely included in one exposure are filmed beginning in the upper left hand corner, left to right and top to bottom, as many frames as required. The following diagrams illustrate the method:



L'exemplaire filmé fut reproduit grâce à la générosité de:

Metropolitan Toronto Library
Canadian History Department

Les images suivantes ont été reproduites avec le plus grand soin, compte tenu de la condition et de la netteté de l'exemplaire filmé, et en conformité avec les conditions du contrat de filmage.

Les exemplaires originaux dont la couverture en papier est imprimée sont filmés en commençant par le premier plat et en terminant soit par la dernière page qui comporte une empreinte d'impression ou d'illustration, soit par le second plat, selon le cas. Tous les autres exemplaires originaux sont filmés en commençant par la première page qui comporte une empreinte d'impression ou d'illustration et en terminent par la dernière page qui comporte une telle empreinte.

Un des symboles suivants apparaître sur la dernière image de chaque microfiche, selon le cas: le symbole \rightarrow signifie "A SUIVRE", le symbole ∇ signifie "FIN".

Les cartes, planches, tableaux, etc., peuvent être filmés à des taux de réduction différents. Lorsque le document est trop grand pour être reproduit en un seul cliché, il est filmé à partir de l'angle supérieur gauche, de gauche à droite, et de haut en bas, en prenant le nombre d'images nécessaire. Les diagrammes suivants illustrent la méthode.



ROCKWOOD ACADEMY.

A COMMERCIAL,



Mathematical and Classical
BOARDING SCHOOL

FOR YOUNG MEN.

SITUATED ON THE GRAND TRUNK R. R., WITHIN A FEW MINUTES' WALK OF
ROCKWOOD STATION, NEAR GUELPH, IN ONE OF THE HEALTHIEST
AND MOST FAVORABLE LOCALITIES IN THE DOMINION.

THE FIFTY-NINTH SEMI-ANNUAL SESSION

COMMENCES ON

THE 1st SEPTEMBER, 1879.

A. MCMILLAN, - PROPRIETOR.

MERCURY PRINT, GUELPH.

ROCKWOOD ACADEMY.

:o:—

FIFTY-NINTH SEMI-ANNUAL SESSION.

:o:—

The subscriber, in again presenting the claims of the above long-established and popular Institution, begs to refer gratefully to its past record of success and increasing business, and to announce that his most assiduous personal attention will continue to be given to the furtherance of the great design of furnishing to young men, at the *least possible expense, a thorough practical education*, coupled with the advantages of a *well-regulated and comfortable home*.

Attention is respectfully directed to the fact that the aim is not that of competition with the General School system of the Province, which is justly entitled to our highest admiration, but of supplementing it by meeting the wants of a large class of special students who cannot be afforded such an entirely optional course as they require in any graded school, except at the expense, and to the detriment of, the general classes.

The long and successful experience of the Proprietor, now extending over a period of fifteen years, in the work of preparing young men for Business, Teaching and Professional life, and the exceptional advantages enjoyed in respect to many branches, are a sufficient guarantee, it is hoped, that the interests of all classes of students will be intelligently and zealously promoted, while the rural situation of the Institution, in a healthy and exceedingly picturesque locality, within easy reach of the City of Guelph, secures, without anything like unpleasant seclusion, that retirement and immunity from many of the annoyances and temptations of city life, which are so desirable as well to the diligent student of maturer years, as to the youth just leaving, possibly for the first time, the parental roof, with all its wholesome restraints.

The method of instruction, as heretofore, will be that which is universally acknowledged as the most successful, viz. :—THE THOROUGH INVESTIGATION OF PRINCIPLES, and their illustration by familiar lectures and the use of suitable apparatus, with personal attention to the preparation of lessons and cheerful assistance when it is required.

The discipline will be characterized by FIRMNESS in reference to habits, tempered with that KINDNESS AND COURTESY which are so essential to the inculcation of good principles.

Such religious exercises as cannot interfere with sectional distinctions will be regularly engaged in.

With a view to the profitable employment of hours of relaxation, and as a means of intellectual culture, a judicious selection of reading matter will be supplied at a trifling additional cost.

Regular PHYSICAL EXERCISE, under proper restrictions, will receive encouragement. With this object an ample gymnasium has been fitted up.

THE COMMERCIAL COURSE

Embraces every element of real value in any Commercial College, together with the complemental branches of an English education, which are too often neglected in the training of the business man. Daily lessons in the most popular style of penmanship, both plain and ornamental. An elegant Diploma will be granted on the successful completion of the course, but on such terms only that it may be regarded as undoubted evidence of thorough acquaintance with the subject, and unblemished character. The Scholarship system is not adopted, but a regular quarterly fee paid for tuition in this as in other branches.

THE ENGLISH COURSE,

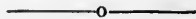
Including the higher mathematics, affords a complete English education to the general student, and will, in view of the late modifications in the School Law, be especially adapted, by the adoption of the AUTHORIZED TEXT BOOKS and the most favorable system of instruction, to the preparation of Teachers for the HIGHEST POSITIONS in their profession, or for entrance to the Normal School.

THE CLASSICAL COURSE

Will include the elements of the Latin and Greek Languages so far as classes may be formed, so as not to conflict with the regular working of the Commercial and English Departments.

Regular instruction in Elocution and the management of the voice in Reading, Speaking, and in Vocal Music when practicable, form an attractive feature to many in the course of each session.

ROCKWOOD ACADEMY.



TERMS, PAYABLE IN ADVANCE :

Board, per quarter of 11 weeks	\$30 00
Tuition, English branches, 11 weeks.....	5 00
Classics and Modern Languages, extra, each branch per quarter	2 50
Reading Room and incidentals, embracing small School-room supplies	1 00

Residents of the neighbourhood ONLY admitted as Day Pupils.

Students are admitted at any time for a term of not less than one Teaching Quarter, but are retained subsequently by the month, if desired. Those entering at the commencement of the Session have the additional advantage of the regular course of lectures.

Time allowed for absence only in case of PERSONAL ILLNESS. No money refunded.

Beds and bedroom furniture are supplied, but entrants are expected to provide themselves with all articles NECESSARY TO THE TOILET.

For convenience of private study, a limited number of rooms will be supplied with stoves, or otherwise heated, during the winter months, a small extra fee being charged proportionate to the advantage enjoyed.

Books and Stationary supplied at Toronto prices.

References given if required.

A. McMILLAN.

*Rockwood Academy,
August, 1879.*

