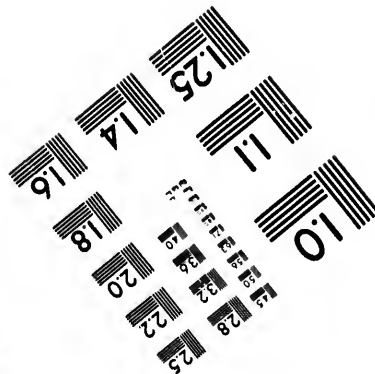
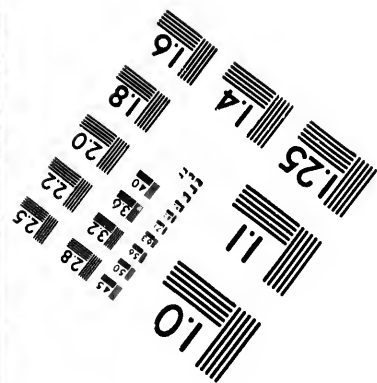
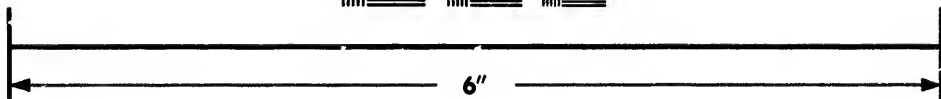
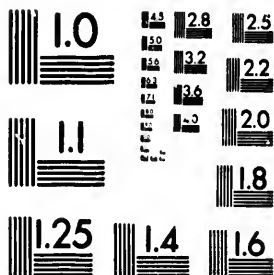


**IMAGE EVALUATION
TEST TARGET (MT-3)**



**Photographic
Sciences
Corporation**

23 WEST MAIN STREET
WEBSTER, N.Y. 14580
(716) 872-4503

15
16
18
20
22
25

**CIHM/ICMH
Microfiche
Series.**

**CIHM/ICMH
Collection de
microfiches.**



Canadian Institute for Historical Microreproductions / Institut canadien de microreproductions historiques

10
11
12
13
14

© 1987

Technical and Bibliographic Notes/Notes techniques et bibliographiques

The Institute has attempted to obtain the best original copy available for filming. Features of this copy which may be bibliographically unique, which may alter any of the images in the reproduction, or which may significantly change the usual method of filming, are checked below.

L'institut a microfilmé le meilleur exemplaire qu'il lui a été possible de se procurer. Les détails de cet exemplaire qui sont peut-être uniques du point de vue bibliographique, qui peuvent modifier une image reproduite, ou qui peuvent exiger une modification dans la méthode normale de filmage sont indiqués ci-dessous.

- | | |
|--|--|
| <input checked="" type="checkbox"/> Coloured covers/
Couverture de couleur | <input type="checkbox"/> Coloured pages/
Pages de couleur |
| <input type="checkbox"/> Covers damaged/
Couverture endommagée | <input type="checkbox"/> Pages damaged/
Pages endommagées |
| <input type="checkbox"/> Covers restored and/or laminated/
Couverture restaurée et/ou pelliculée | <input type="checkbox"/> Pages restored and/or laminated/
Pages restaurées et/ou pelliculées |
| <input type="checkbox"/> Cover title missing/
Le titre de couverture manque | <input checked="" type="checkbox"/> Pages discoloured, stained or foxed/
Pages décolorées, tachetées ou piquées |
| <input type="checkbox"/> Coloured maps/
Cartes géographiques en couleur | <input type="checkbox"/> Pages detached/
Pages détachées |
| <input type="checkbox"/> Coloured ink (i.e. other than blue or black)/
Encre de couleur (i.e. autre que bleue ou noire) | <input checked="" type="checkbox"/> Showthrough/
Transparence |
| <input type="checkbox"/> Coloured plates and/or illustrations/
Planches et/ou illustrations en couleur | <input type="checkbox"/> Quality of print varies/
Qualité inégale de l'impression |
| <input checked="" type="checkbox"/> Bound with other material/
Relié avec d'autres documents | <input type="checkbox"/> Includes supplementary material/
Comprend du matériel supplémentaire |
| <input type="checkbox"/> Tight binding may cause shadows or distortion
along interior margin/
La reliure serrée peut causer de l'ombre ou de la
distorsion le long de la marge intérieure | <input type="checkbox"/> Only edition available/
Seule édition disponible |
| <input type="checkbox"/> Blank leaves added during restoration may
appear within the text. Whenever possible, these
have been omitted from filming/
Il se peut que certaines pages blanches ajoutées
lors d'une restauration apparaissent dans le texte,
mais, lorsque cela était possible, ces pages n'ont
pas été filmées. | <input type="checkbox"/> Pages wholly or partially obscured by errata
slips, tissues, etc., have been refilmed to
ensure the best possible image/
Les pages totalement ou partiellement
obscurcies par un feuillet d'errata, une pelure,
etc., ont été filmées à nouveau de façon à
obtenir la meilleure image possible. |
| <input type="checkbox"/> Additional comments:/
Commentaires supplémentaires: | |

This item is filmed at the reduction ratio checked below/
Ce document est filmé au taux de réduction indiqué ci-dessous.

10X	12X	14X	16X	18X	20X	22X	24X	26X	28X	30X	32X
						✓					

The copy filmed here has been reproduced thanks to the generosity of:

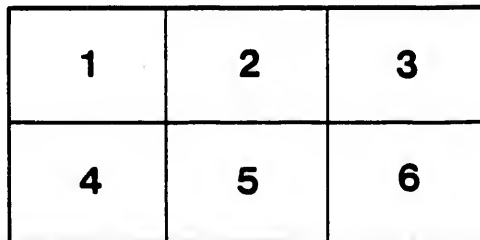
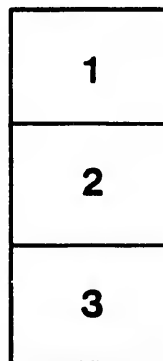
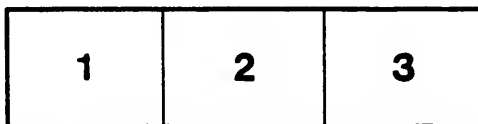
D. B. Weldon Library
University of Western Ontario
(Regional History Room)

The images appearing here are the best quality possible considering the condition and legibility of the original copy and in keeping with the filming contract specifications.

Original copies in printed paper covers are filmed beginning with the front cover and ending on the last page with a printed or illustrated impression, or the back cover when appropriate. All other original copies are filmed beginning on the first page with a printed or illustrated impression, and ending on the last page with a printed or illustrated impression.

The last recorded frame on each microfiche shall contain the symbol \rightarrow (meaning "CONTINUED"), or the symbol ∇ (meaning "END"), whichever applies.

Maps, plates, charts, etc., may be filmed at different reduction ratios. Those too large to be entirely included in one exposure are filmed beginning in the upper left hand corner, left to right and top to bottom, as many frames as required. The following diagrams illustrate the method:



L'exemplaire filmé fut reproduit grâce à la générosité de:

D. B. Weldon Library
University of Western Ontario
(Regional History Room)

Les images suivantes ont été reproduites avec le plus grand soin, compte tenu de la condition et de la netteté de l'exemplaire filmé, et en conformité avec les conditions du contrat de filmage.

Les exemplaires originaux dont la couverture en papier est imprimée sont filmés en commençant par le premier plat et en terminant soit par la dernière page qui comporte une empreinte d'impression ou d'illustration, soit par le second plat, selon le cas. Tous les autres exemplaires originaux sont filmés en commençant par la première page qui comporte une empreinte d'impression ou d'illustration et en terminant par la dernière page qui comporte une telle empreinte.

Un des symboles suivants apparaîtra sur la dernière image de chaque microfiche, selon le cas: le symbole \rightarrow signifie "A SUIVRE", le symbole ∇ signifie "FIN".

Les cartes, planches, tableaux, etc., peuvent être filmés à des taux de réduction différents. Lorsque le document est trop grand pour être reproduit en un seul cliché, il est filmé à partir de l'angle supérieur gauche, de gauche à droite, et de haut en bas, en prenant le nombre d'images nécessaire. Les diagrammes suivants illustrent la méthode.

15-19-99

Wm. J. ...
Wm. J. ...

VOTERS' LIST

OF THE TOWNSHIP OF BIDDULPH

FOR THE YEAR 1897.

THE Sheriff immediately upon the receipt of his copies, cause one of them to be posted up in a conspicuous place in the Court House. The Clerk of the Peace upon the receipt of his copies shall cause one of them to be posted up in a conspicuous place in his office. Every Public or Separate School Head Master or Mistress shall, in like manner, post up one of his or her copies on the door of the school house, and every postmaster shall post up one of his copies in the post office.—Voters' List Act, 1889, Chap. 3, Sec. 2.

Vot

1-CL
5-GR

V I
N B, M
S L R
St, Qu
Centre

To be
from 5
South
Corpor
Con. 6
of Ire

PAR

Junon	N o R
-------	-------------

7

7

j 7

7

7

j 7

j 7

7

7

7

7

7

j

7

Voters' List, Township of Biddulph, 1897

SCHEDULE OF POSTOFFICES

1—CLANDEBOYE 2—LUCAN 3—DENFIELD 4—MOORESVILLE
 5—GRANTON 6—WHALEN 7—ELGINFIELD 8—CENTRALIA
 9—PROSPECT HILL 10—SAINTSBURY

ABBREVIATIONS

V I shall mean Village of Ireland. V G, Village of Granton. V A, Village of Awmick
 N B, North Boundary. S B, South Boundary. N L R, North of the London Road.
 S L R, South of the London Road. M St, Main Street. K St, King street. Qn or Q
 St, Queen street. Flan or F St, Flannigan street. Brad St, Bradley street. C S R
 Centre Side Road.

POLLING SUB-DIVISION No. 1

To be composed of Con 1, from South Boundary to lot 27, inclusive ; Con. 2 and 3,
 from S B to lot 25, inclusive ; Con. 4 and 5 from S B to lot 26, inclusive ; North and
 South of the London Road from Lot No. 1 to the Corporation of Lucan, and from the
 Corporation of Lucan to . yan's Corners ; Lots 26, 27, 28, 29, 30, 31, 36, and 37,
 Con. 6 ; Lots 31, 32, 33, Con. 7, and all South of the Centre Sideroad in the Village
 of Ireland.

PART I—Persons entitled to vote at both Municipal Elec- tions and Elections to the Legislative Assembly.

Jurors	No. on Roll	NAME	No. of Lot	Con. or St	Descrip- tion of Voter	C. A.	Occupation
	753	Benn, Hugh	pt 8	s l r	f, m f	2	farmer
	754	Benn Thomas	pt 8	s l r	f, m f	2	farmer
j	752	Benn Thomas	pt 9	s l r	f, m f	2	farmer
	771	Brown Fred	pt 8, R 2	V I	f, m f	1	shoe n'r
	763	Brabison Robt. sr	pt 11	s l r	f, m f	7	farmer
j	761	Brabison Robt. jr	pt 11	s l r	f, m f	2	farmer
j	318	Brownlee William	36	.5	f, m f	2	farmer
	788	Betts George	pt 7	n l r	oc, m f	2	laborer
	764	Blake William	pt 11	s l r	oc, m f	7	farmer
j	58	Carter George	27	1	f, m f	1	farmer

LIST OF VOTERS

Jurors	No. on Roll	NAME	No. of Lot	Con. or St.	Description of Voter	♂	Occupation
	54	Carter, Gilbert J	27	1	fs, m f	1	farmer
	55	Carter Levi	27	1	fs, m f	1	farmer
	60	Clifford, Patrick	30	1	f, m f	1	farmer
j	127	Coursey James	s half 32	2	f, m f	2	farmer
j	137	Coursey John	37	2	f, m f	2	farmer
j	139	Coursey Richard	n half 38	2	f, m f	2	farmer
	140	Coursey John A	n half 38	2	fs, m f	2	farmer
j	125	Coursey Richard	n half 32	2	f, m f	2	farmer
	126	Coursey Thos. Walter	n half 32	2	fs, m f	2	farmer
j	772	Cunningham, Wm.	pt 3 4 5	R 2, V I	f, m f	1	farmer
j	201	Coursey, Thomas H.	37	3	f, m f	2	farmer
j	202	Coursey Thomas	38, pt 38	3, 4	f, m f	2	farmer
	203	Coursey C. H.	38	3	fs, m f	2	farmer
j	253	Clatterham Samuel	w pt 27	4	f, m f	2	farmer
j	720	Collison Martin	pt 10, s 31	n l r, 6	f, m f	7	farmer
j	755	Collison Wm. J.	pt 10	s l r	f, m f	7	farmer
	759	Collison Martin	pt 11	s l r	fs, m f	7	farmer
	758	Collison John T. F.	pt 11	s l r	fs, m f	7	farmer
j	361	Cluff, Thomas	37	6	t, m f	2	farmer
j	66	Cooper, Joseph	34	1	f, m f	1	farmer
	362	Cluff, Thomas	37	6	fs, m f	2	farmer
	67	Cooper Richard	34	1	oc, m f	1	farmer
	194	Coursey Richard	n half 32	3	fs, m f	2	farmer
	740	Canning Joseph	pt 3	s l r	oc, m f	2	farmer
j	269	Donnelly James	s half 37	4	t m f	2	farmer
j	320	Donnelly James	s half 37, 38	5	f, m f	2	farmer
j	69	Dancy Tassel	36	1	f, m f	3	farmer
j	58	Egan Patrick	29	1	t, m f	1	farmer

LIST OF VOTERS

8

Occupation	Jurors	No. on Roll	NAME	No. of Lot	Con. or St	Description of Voter	Age	Occupation
farmer		748	Ferguson John A.	pt 2	s l r	t, m f	2	pedler
farmer	j	721	Fox George	pt 8 and 9	n l r	f, m f	2	farmer
farmer		770	Farrell Patrick	pt 1	E F st, V I	oc, m f	1	farmer
farmer								
farmer								
farmer	j	718	Gaben Rev N	pt 10	n l r	oc, m f	2	clergyman
farmer		65	Gibson Michael	83	1	f, m f	1	farmer
farmer	j	813	Guilfoil Thomas	n half 84	5	f, m f	2	farmer
farmer	j	814	Guilfoil William	s half 84	5	f, m f	2	farmer
farmer	j	816	Guilfoil Simon	n half 85	5	f, m f	2	farmer
farmer		920	Guilfoil Malcolm	n half 85	5	fs, m f	2	farmer
farmer	j	819	Gleeson Michael	n half 87	5	f, m f	2	farmer
farmer	j	723	Guilfoil Edward	pt 7, pt 7	n l r, s l r	t, m f	2	farmer
farmer		724	Guilfoil Stearn	pt 7	n l r	fs, m f	2	farmer
farmer		725	Guilfoil Christopher	pt 7	n l r	fs, m f	2	farmer
farmer		726	Guilfoil Oliver	pt 7	n l r	fs, m f	2	farmer
farmer								
farmer		56	Hodgins John	28, oth prem	1	f, m f	1	farmer
farmer		57	Hodgins W. J.	29	1	fs, m f	1	farmer
farmer	j	68	Haskett Benjamin	35	1	f, m f	3	farmer
farmer	j	73	Henry Andrew	38	1	f, m f	3	farmer
	j	76	Henry Alexander	n half 39	1	f, m f	3	farmer
	j	265	Howard John	85, n half 87	4	f, m f	2	farmer
farmer	j	266	Howard Casper	85	4	fs, m f	2	farmer
farmer	j	128	Hodgins Eli	83	2	f, m f	2	farmer
farmer	j	130	Hodgins C. C.	s j 84, 34	2, 3	f, m f	2	farmer
		134	Hodgins Albert O.	85	2	fs, m f	2	farmer
		135	Hodgins John H.	86, 81	2	f, m f	2	farmer
farmer	j	186	Hodgins John	25, pt 1, 3,	3 n l r	f, m f	2	farmer
	j	204	Hodgins Uriah	89	3	f, m f	2	farmer

LIST OF VOTERS

JURORS	No. on Roll	NAME	No. of Lot	Con. or St	Description of Voter	A. O.	Occupation
j	71	Henry Andrew	37	1	t, m f	2	farmer
j	72	Henry William	37	1	t, m f	2	farmer
j	193	Hodgins Christopher	s $\frac{1}{2}$ 32, 33, n $\frac{1}{2}$ 32	3, 2	f, m f	2	farmer
j	198	Hodgins F. W.	33	3	f, m f	2	farmer
	182	Hodgins John J. P.	n half 34	3	f, m f	2	farmer
	306	Hamilton Gustavus	26, s $\frac{1}{2}$ 26	5, 4	f, m f	2	farmer
	37	Hamilton George	s $\frac{1}{2}$ 26	4	f, m f	2	farmer
j	308	Hodgins Ensley	27	5	f, m f	2	farmer
	810	Hodgins George	28	5	f, m f	2	farmer
j	312	Hodgins Walter G.	n pt 29	5	f, m f	2	farmer
	811	Hodgins Irwin	28	5	fs, m f	2	farmer
j	190	Hodgins Alfred	35	3	f, m f	2	farmer
j	404	Hogan Martin	31, pt 31	7, 6	f, m f	2	farmer
j	731	Hodgins Jas M.	pt 2, o p	n l r	f, m f	2	farmer
	186	Hodgins Thomas	36	2	fs, m f	2	farmer
j	197	Hodgins A. G.	33	3	f, m f	2	farmer
	405	Hogan Wm.	31	7	fs, m f	2	farmer
j	730	Hall Thomas	pt 4	n l r	f, m f	2	farmer
j	357	Heenan James	29	6	f, m f	2	farmer
	403	Hogan Michael	31	7	fs, m f	2	farmer
	62	Lumby Thomas	s $\frac{1}{2}$ 31	1	oc, m f	1	farmer
j	61	Lumby Ashley	s $\frac{1}{2}$ 31	1	f, m f	1	farmer
j	207	Langford Benj	pt 30	3	f, m f	2	farmer
j	249	Lewis Jeremiah	n $\frac{1}{2}$ 28	4	f, m f	2	farmer
j	262	Lewis George	s $\frac{1}{2}$ 32	4	f, m f	2	farmer
j	271	McRoberts, Robt.	pt 38	4	f, m f	2	farmer
j	353	McLaughlin Edward	pt 26	6	f, m f	2	farmer

JURORS	No. on Roll
	72
	74
	71
	75
	76
j	76
	77
	77
	78
	78
	72
	78
j	73
	76
	35
	35
j	7
j	8
j	1
j	1
j	
j	
j	

LIST OF VOTERS

5

Jurors	No. on Roll	NAME	No. of Lot	Con. or St.	Description of Voter	C. A.	Occupation
	727	McMahon John	pt 7, pt 8, pt 11	n l r	f, m f	2	farmer
farmer	742	Meads Melvin	pt 2	s l r	fs, m f	2	farmer
farmer	717	Mollhargy John	pt 11	n l r	f, m f	7	farmer
farmer	751	McIlhargy Patrick	n pt 7	s l r	f, m f	2	farmer
farmer	765	McCormack Stephen	pt 11	s l r	f, m f	7	merchant
farmer	j 769	Mollhargy Joseph	1, 2, 5, 6, R2	E F st, V I	oc, m f	1	farmer
farmer	778	McWilliams Andrew	1, 28, o p	s l r, 2	t, m f	1	farmer
farmer	779	McWilliams Alex.	1	s l r	fs, m f	1	farmer
farmer	780	McWilliams Wm.	1	s l r	fs, m f	1	farmer
farmer	787	McFadden Samuel	16, 17, o p	H 2, V I	f, m f	1	gardener
farmer	729	McMahon Charles	pt 7	n l r	fs, m f	2	farmer
farmer	788	McMartin Duncan	pt 20	5	oc, m f	2	farmer
farmer	j 780	McMartin Hugh	pt 29	5	t, m f	2	farmer
farmer	766	McCormack Charles	pt 11	s l r	f, m f	7	merchant
farmer	356	Morkin James	pt 28	6	fs, m f	2	farmer
farmer	355	Morkin Patrick	pt 28	6	fs, m f	2	farmer
farmer							
farmer							
farmer							
farmer							
farmer							
farmer	406	Nangle Patrick	32, 33, 1	7, a b	f, m f	2	farmer
farmer	407	Nangle Joseph	32	7	fs, m f	2	farmer
	408	Nangle John	32	7	fs, m f	2	farmer
farmer	j 760	Quigley Patrick	pt 11, 16	s l r, 5	f, m f	7	farmer
farmer							
farmer	j 860	Ryan John	86	6	f, m f	2	farmer
farmer	j 187	Rollins William	pt 30, pt 3, pt 4	3, s l r	t, m f	2	farmer
farmer	j 190	Ryan, Nathaniel A.	pt 31	3	f, m f	2	farmer
farmer	j 192	Ryan, Francis A.	n 32	3	f, m f	2	farmer
farmer	j 268	Ryan Caleb	88	4	f, m f	2	farmer
farmer	j 264	Ryan George	84	4	f, m f	2	farmer

LIST OF VOTERS

Juror	No. on Roll	NAME	No. of Lot	Con. or St.	Description of Voter	Age	Occupation
j	716	Ryan George	n w pt 12	n l r	f, m f	7	farmer
j	714	Ryan David	e pt 12, n 1/2 3	n l r, s b	f, m f	7	farmer
	715	Ryan, W. H., J. P	e pt 12	n l r	f, m f	7	farmer
	188	Rollins, Wellington	pt 30	3	fs, m f	2	farmer
	189	Rollins, Victor	pt 30	3	fs, m f	2	farmer
	722	Ryder, Daniel	pt 8	n l r	f, m f	2	farmer
j	128	Soeli, W. H.	n 1/2 31, 29, 30	1, 2	f, m f	2	farmer
j	65	Stevenson, James	pt 40	1	f, m f	3	farmer
j	141	Stanley, Henry	s 1/2 38	2	f, m f	2	farmer
j	142	Stanley, Bernard W.	39	2	f, m f	2	farmer
	268	Sadleir, Francis	36	4	f, m f	2	farmer
j	267	Sadleir, Wellington	36	4	f, m f	2	farmer
	774	Simpson, Richard	10, 11	R 2 V I	f, m f	1	farmer
j	205	Stanley, Charles	pt 30	3	f, m f	2	farmer
	309	Steeper, William	27	5	oc, m f	2	farmer
j	358	Thompson, John	30	6	f, m f	2	farmer
	64	Thompson, William	32	1	fs, m f	1	farmer
j	63	Thompson, Hiram	32, 33	1	t, m f	1	farmer
j	746	Turner, Elijah	pt 3	s l r	f, m f	2	farmer
	359	Thompson, Thomas	30	6	fs, m f	2	farmer
j	258	Whalen, James	n 1/2 32	4	t, m f	2	farmer
	775	Westle, James	12, 13, 29, 30	R 2, R 3, V I	f, m f	1	gentleman
	811	Westle, Richard	14, 21, R 3, R 2	V I	f, m f	1	gentleman
	261	Whalen, Daniel	n 1/2 32	4	fs, m f	2	farmer
	257	Whalen, James	n 1/2 32	4	fs, m f	2	farmer
	259	Whalen, Jeremiah	n 1/2 32	4	fs, m f	2	farmer
j	250	Ward, William	e 1/2 27	4	t, m f	2	farmer
j	251	Ward, John	e 1/2 27	4	t, m f	2	farmer

Juror	No. on Roll
-------	-------------

PART

27

76

77

74

75

86

72

77

78

81

91

10

24

74

12

13

2

7

4

7

3

LIST OF VOTERS

7

Occupation	No. on Roll	NAME	No. of Lot	Con. or St	Description of Voter	C. R.	Occupation
farmer							
farmer							
farmer	270	Atkinson, James	s j 37	4	f	2	farmer
farmer	768	Butler, Peter E.	pt 2, pt 3	s l r, n l r	f	2	farmer
farmer	778	Bice, Mrs. C.	8, 9	R 2, V I	f	1	widow
farmer	749	Burnett, James	pt 4, pt 3	s l r	f	2	farmer
farmer	757	Collison, Mrs. C.	pt 10, pt 11	s l r	f	7	widow
farmer	868	Cain, John F.	37	6	f	2	farmer
farmer	729	Casey, John	pt 3	n l r	f	2	farmer
farmer	776	Friers, Margaret	19, 20, o p	R 2, V I	f	1	spinster
farmer	785	Fox, John	pt 7, pt 29	n l r, 5	f	2	banker
farmer	817	Guilfoil, Robt.	s j 35	6	f	2	farmer
farmer	919	Hodgins, Thomas	pt 30	3	f	2	
farmer	195	Hodgins, Mrs. Ann	33	3	f	2	widow
farmer	255	Hodgins, George	pt 27	4	f	2	farmer
farmer	781	Hodgins, George W.	pt 26	R 2, V I	f	1	farmer
farmer	129	Hodgins, Jane	33	2	f	2	widow
farmer	183	Hodgins, Mrs. James	35	2	f	2	widow
farmer	256	Hodgins, Russel	pt 27	4	f	2	teacher
farmer	777	Lewis, Maria	22, 23, o p	R 2, V I	f	1	widow
gentleman	409	McGrath, Mrs. Ann	pt 33	7	f	2	widow
gentleman	741	Meads, Sarah A.	pt 2	s l r	f	2	widow
farmer	59	McMahon, James	29	1	f	2	farmer
farmer	354	Morkin, Mrs. Margaret	pt 28, n j 29	6, 8	f	2	widow
farmer	750	Parker, Mary	pt 4	s l r	f	2	widow
farmer	812	Patrick, William	18	R 2, V I	f	1	farmer

PART 2—Persons entitled to vote at Municipal Elections only

LIST OF VOTERS

Jurors	No. on Roll	NAME	No. of Lot	Con. or St.	Description of Voter	P. O.	Occupation
	74	Rosser, John W.	s half 39	1	f	3	farmer
	191	Ryan, Mrs. Catherine	pt 31	2	f	2	
	124	Sceli, Robert	29	2	f	2	farmer
	252	Steel, Cain	e half 27	4	f		
	70	Stanley, Miss Lucretia	37	1	f	2	spinster
	743	Stanley, E.	pt 2	s l r	f	2	gentleman
	200	Stanley, James	86	3	f	2	farmer
	736	Shaw, Irene	pt 4	s l r	f	2	
	260	Thompson, Richard	n half 32	4	f	2	farmer
	747	Tennent, E.	pt 3	s l r	f	2	vet. surg'n
	745	Turner, Mrs. Sarah	pt 3	s l r	f	2	widow

PART 3—Persons entitled to vote at Elections to the Legislative Assembly only

	732	Bragg, Arthur	33	2	m f	2	laborer
	719	Benn, Richard	pt 10	n l r	m f	7	farmer
	138	Cathcart, Wm.	37	2	m f	2	farmer
	254	Clatterham, Charles	pt 27	4	m f	2	farmer
	756	Collison, Jas. T.	pt 10	s l r	m f	2	teacher
	143	Deacon, William H.	39	2	m f	2	farmer
	196	Deacon, Matthew	33	3	m f	2	farmer
	131	Guilfoil, Christopher	s half 34	2	m f	2	farmer
	734	Hodgins, E. R.	34	3	m f	2	mason
	767	McCormick, Benjamin	pt 11	s l r	m f	2	merchant
		Trouthen, John	31	3	m f	2	laborer

Occupation

POLLING SUB-DIVISION No. 2

To be composed of Con. 1 from North Boundary to Lot 25, inclusive; Cons. 2 and 3 from N. B. to lot 24, inclusive; and all the Village of Ireland north of the C. S. R.

PART I—Persons entitled to vote at both Municipal Elections and Elections to the Legislative Assembly.

Jurors	No. on Roll	NAME	No. of Lot	Con. or St	Description of Voter	Age	Occupation
j	173	Atkinson, James	s 1/2 16	3	f, m f	4	farmer
	40	Aikens, Johnston	pt 15	1	t, m f	4	farmer
j	99	Atkinson, W. H.	n half 12	2	f, m f	4	farmer
j	100	Atkinson, Robert	s half 12	2	f, m f	4	farmer
j	103	Atkinson, Thomas	s half 14	2	f, m f	4	farmer
j	104	Atkinson, Richard	n half 14	2	f, m f	4	farmer
j	153	Atkinson, Marshall	s pt 5	3	t, m f	10	farmer
j	172	Atkinson, William	n half 16	3	f, m f	4	farmer
j	171	Atkinson, John	s half 15	3	f, m t		merchant
j	81	Atkinson, James	3	2	f, m f	8	farmer
j	148	Atkinson, W. R.	3	3	f, m f	8	farmer
j	149	Atkinson, Thomas	3	3	f, m f	8	farmer
j	45	Barry, James	n half 21	1	f, m f	1	farmer
j	160	Blackwell, Richard	s half 10	3	f, m f	4	farmer
j	78	Blair, James	1	2	f, m f	8	farmer
	79	Blair, William	1	2	fa, m f	8	farmer
j	28	Bloomfield, John	pt 15	1	t, m f		merchant
j	36	Bloomfield, John	pt 16	1	f, m f	4	gentleman
	41	Colby, Robert	pt 15	1	oc, m f	4	pedler
j	10	Colwell, William T.	6	1	f, m f	8	farmer

LIST OF VOTERS

Jurors	No. on Roll	NAME	No. of Lot	Con. or St.	Description of Voter	Sex	Occupation
j	790	Carter, James	pt 1	E F st, V I	f, m f		1 merchant
j	120	Crawley, George E.	21	2	f, m f	4	farmer
j	17	Curtain, Patrick	10, 11	1	f, m f	4	farmer
j	48	Collins, David	22, o p	1	t, m f	1	farmer
	50	Collins, Thomas	22	1	f, m f	1	farmer
j	16	Carey, Patrick	w half 9	1	f, m f	4	farmer
j	113	Culbert, Richard	19	2	f, m f	2	farmer
j	121	Cooper, Robert	22	2	f, m f	2	farmer
	122	Cooper, Jonathan	22	2	fs, m f	2	farmer
	798	Collins, Joseph	2	E F st, V I	f, m f	1	farmer
j	112	Crawley, William H.	17	2	f, m f	4	farmer
	49	Collins, Edsell	22	1	fs, m f	1	farmer
	798	Clark, Andrew	31 to 35	3rd R, V I	f, m f	1	farmer
	44	Clark, Robert	19	1	oc, m f	1	farmer
j	98	Carey, Patrick	11	2	f, m f	4	farmer
j	161	Dancy, William	n half 11	3	f, m f	4	farmer
	47	Dixon, Joseph	s half 21	1	fs, m f	1	farmer
	788	Dunn, John	21	R 3, V I	f, m f	1	gardener
j	8	Down, W R.	4	1	t, m f	8	farmer
j	51	Elliott, W. H.	pt 23 and 24	1	t, m f	1	farmer
	144	Elstou, Richard	1	8	f, m f	8	farmer
	145	Elston, Jesse	1	3	fs, m f	8	farmer
	146	Elston, Richard	1	3	fs, m f	8	farmer
j	178	Flynn, Robert	20	3	f, m f	2	farmer
	34	Fraser, William	pt 15	1	f, m f	4	farmer
	179	Flynn, William	20	3	fs, m f	2	farmer

LIST OF VOTERS

Occupation	Jurors	No. on Roll	NAME	No. of Lot	Con. or St	Description of Voter	P. O.	Occupation
merchant	j	18	Glavin, Edward	8	1	f, m f	8	farmer
farmer		782	Gilmore, John	19	R 3, V I	f, m f	1	carpenter
farmer		37	Gilmore, John	s pt 16	1	oc, m f	4	laborer
farmer	j	30	Hodgins, Moses	pt 15, n pt 16	1	f, m f	4	farmer
farmer		31	Hodgins, William J.	pt 15	1	fs, m f	4	farmer
farmer	j	91	Hodgins, William D.	8	2	f, m f	8	farmer
farmer	j	101	Hodgins, Joseph	n half 13	2	f, m f	4	farmer
farmer	j	102	Hodgins, Charles C.	s half 13	2	f, m f	4	farmer
farmer		150	Hennessey, James	4, n pt 5	3	f, m f	8	farmer
farmer	j	162	Hodgins, Steward	s half 11	3	f, m f	4	farmer
farmer	j	165	Hodgins, George	13	3	f, m f	4	farmer
farmer	j	166	Hodgins, Alexander	13	3	f, m f	4	farmer
farmer	j	167	Hodgins, Samuel H.	14	3	f, m f	4	farmer
farmer	j	175	Herbert, James	18, w pt 18	3, 4	f, m f	4	farmer
farmer	j	176	Herbert, William	19	3	f, m f	4	farmer
farmer	j	181	Hodgins, A. K.	22	3	f, m f	2	farmer
farmer		799	Harleton, Robert	pt 2	E F st, V I	oc, m f	1	farmer
farmer		183	Hodgins, Richard	22	3	fs, m f	2	farmer
gardener		788	Hodgins, R. C.	24	3 R, V I	f, m f	1	gardener
farmer		151	Hennessey, James	4	3	fs, m f	8	farmer
farmer		152	Hennessey, Thomas A.	4	3	fs, m f	8	farmer
farmer		155	Isaac, Andrew	7	3	oc, m f	10	farmer
farmer	j	43	Jones, O. E.	19, 20	1	f, m f	1	farmer
farmer	j	82	Jamieson, Alexander	4	2	f, m f	8	farmer
farmer	j	810	Jones, W. A., M. D	3 to 6, o p	R 3, V I	f, m f	1	physician
farmer		796	Jell, Robt. N.	pt 25	E F st, V I	oc, m f	1	G T R agent

LIST OF VOTERS

Jurors	No. on Roll	NAME	No. of Lot	Con. or St	Description of Voter	P. O.	Occupation
j	25	Kelly, Joseph	14, pt 15	1	f, m f	8	farmer
j	22	Kelly, Wm.	13	1	f, m f	4	farmer
j	184	Kent, William	23	3	f, m f	2	farmer
j	185	Kent, Francis	24	3	f, m f	2	farmer
	23	Kelly, Wm. J.	13	1	fs, m f	4	farmer
	24	Kelly, Laurstrom	13	1	fs, m f	4	farmer
j	20	Lewis, James	12	1	f, m f	4	farmer
	21	Lewis, Walter	12	1	fs, m f	4	farmer
j	159	Lewis, William	n half 10	3	f, m f	4	farmer
	14	Lewis, John J.	pt 9	1	oc, m f	4	blacksmith
j	110	Lewis, Thomas A.	17	2	t, m f	4	farmer
	15	Lewis, William	n half 9	1	t, m f	4	farmer
j	84	McFalls, Steward A.	6 and 5	2	f, m f	8	farmer
	87	McFalls, John	6	2	fs, m f	8	farmer
	85	McFalls, Archibald	6	2	fs, m f	8	farmer
	86	McFalls, Andrew	6	2	fs, m f	8	farmer
j	88	McFalls, Alexander	7	2	f, m f	8	farmer
	89	McFalls, James	7	2	fs, m f	8	farmer
j	93	McFalls, Robert	9	2	f, m f	10	farmer
	156	McFalls, John	8	3	f, m f	10	farmer
	90	McFalls, William John	7	2	fs, m f	8	farmer
j	157	McFalls, Oscar	8 and 9	3	t, m f	10	farmer
j	158	McFalls, Albert	8 and 9	3	t, m f	10	farmer
j	163	McFalls, John	12	3	t, m f	4	farmer
j	114	Morkin, Thomas	20, n half 31	2, e	f, m f	2	farmer
	115	Morkin, Hugh	20	2	fs, m t	2	farmer
j	147	Mitchell, Thomas	2, s half 2	3, 2	f, m f	8	farmer
j	80	Mitchell, John H.	n half 2	2	f, m f	8	farmer
j	168	Moncton, Mitchell	n half 15	3	f, m f	4	farmer

LIST OF VOTERS

Jurors	No. on Roll	NAME	No. of Lot	Con. or St.	Description of Voter	Age	Occupation
	789	Molland, John	25	R 8, V I	f, m f	1	gardener
8 farmer	860	Morley, Thomas	pt 2, pt 8, 18	E F at, V I	t, m f	1	farmer
4 farmer	105	McCann, Thomas	15	2	oc, m f	4	farmer
2 farmer	117	Morkin, William	20	2	fs, m f	2	farmer
2 farmer	94	McFalls, Wilbert	9	2	fs, m f	2	farmer
4 farmer	118	Morkin, John	20	2	fs, m f	2	farmer
4 farmer	786	McFadden, John W.	pt 11	R 3, V I	f, m f	1	gardener
	89	McFalls, John	5	2	fs, m f	8	farmer
	95	McFalls, John	9	2	fs, m f	10	farmer
4 farmer							
4 farmer							
4 farmer							
4 blacksmith	j 1	Niven, Anthony	1	1	f, m f	8	farmer
4 farmer	6	Neil, Richard	3	1	f, m f	8	farmer
4 farmer	j 4	Neil, Thomas	3, s half 2	1	t, m f	8	farmer
	109	Neil, John	18	2	oc, m f	4	farmer
	j 5	Neil, James	s half 2	1	t, m f	8	farmer
8 farmer							
8 farmer	j 42	O'Dwyre, Anthony	18	1	f, m f	4	farmer
8 farmer	j 12	Oke, James	7	1	f, m f	8	farmer
8 farmer							
8 farmer	j 96	Ryley, Thomas	10	2	f, m f	4	farmer
8 farmer	97	Ryley, Philip	10	2	f, m f	4	farmer
10 farmer	j 106	Revington, W. W.	15, 16	2	f, m f	4	farmer
10 farmer	107	Revington, W. W.	16	2	fs, m f	4	farmer
8 farmer	j 180	Richardson, Wm.	21	8	f, m f	2	farmer
10 farmer	108	Revington, Benj.	16	2	fs, m f	4	farmer
10 farmer	j 9	Rowland, William	5	1	f, m f	8	farmer
4 farmer	j 116	Ryan, John	28	2	f, m f	2	farmer
2 farmer							
2 farmer							
8 farmer	33	Simpson, Thomas	pt 15	1	oc, m f	4	farmer
8 farmer	j 38	Simpson, W. H.	s half 16, 17	1	f, m f	4	farmer
4 farmer							

Jurors	No. on Roll	NAME	No. of Lot	Con. or St	Description of Voter	P.	Occupation
j	39	Simpson, John	17	1	f, m f	4	farmer
j	794	Sellers, George	pt 1	E F st, V I	f, m f	1	hotelkeeper
	801	Simpson, Thomas	2	E F st, V I	f, m f	1	farmer
	29	Simpson, Moses	pt 15	1	f, m f	4	farmer
j	169	Thompson, Wm. J.	s half 15	3	t, m f	4	farmer
	32	Webb, Richard	pt 15	1	oc, m f	4	farmer
	807	Wilson, James	17, 18	E F st, V I	oc, m f	1	farmer

PART 2—Persons entitled to vote at Municipal Elections only

	154	Atkinson, James	s pt 5	3	f	8	farmer
	805	Bastard, Mrs. James	pt 13, o p	E F st, V I	f	1	widow
	111	Crawley, Susan	17	2	f	4	widow
	11	Colwell, John	6	1	f	8	farmer
	46	Dixon, Mrs. Joseph	s half 21	1	f	1	widow
	35	Frazer, Mrs. Jane	pt 15	1	f	4	widow
	119	Guest, Robert	23	2	f	2	farmer
	784	Herbert, Charlotte	12, 13, 14, 15, o p	R 3, R 2, V I f		1	
	803	Hodgson, Robert	pt 3, 13-18	E F st, V I, 2 f		1	
	809	Hodgins, Robert	pt 24	1	f	1	farmer
	7	Hanford, Thomas	4	1	f	8	farmer
	27	Lewis, Eliza	pt 15	1	f	4	widow
	2	McCoy, Samuel	1	1	f	8	farmer
	174	McLeod, Robert	17	3	f	2	farmer
	164	McFalls, Alex.	12	3	f	2	farmer
	3	Mitchell, James	n half 2	1	f	8	farmer
	802	Shoff, Daniel	pt 13, o p	E F st, V I	f	1	

LIST OF VOTERS

Jurors	No. on Roll	NAME	No. of Lot	Con. or St	Description of Voter	P. C.	Occupation
4 farmer	52	Sutton, James	28	1	f	1	farmer
hotelkeeper	170	Stanley, L. D.	pt s half 15	3	f	2	merchant
1 farmer	808	Williams, William	pt 24, o p	1	f	1	farmer
4 farmer	806	Wilson, Maria	17, 18	E F st, V I	f	1	widow

PART 3—Persons entitled to vote at Elections to the Legislative Assembly only

4 farmer	92	Criek, James	8	2	n f	1	laborer
1 farmer	792	Carter, A. E.	pt 1	E F st, V I	m f	1	merchant
	26	Casey, Patrick	14	1	m f	4	farmer
	791	Carter, C. E.	pt 1	E F st, V I	m f	1	merchant
8 farmer	18	Fraser, William	11	1	m f	4	laborer
1 widow	177	Holloran, William	19	3	m f	2	farmer
4 widow	182	Penney, Henry	22	3	n f	2	farmer
8 farmer	795	Ryley, Peter	pt 1	E F st, V I	m f	1	laborer
1 widow	19	Simpson, Thomas	11	1	m f	4	laborer
4 widow							
2 farmer							
1							
1							
1 farmer							
8 farmer							
4 widow							
8 farmer							
2 farmer							
2 farmer							
8 farmer							
1							

POLLING SUB-DIVISION No. 3

Comprising Cons. 4 and 5 from Lot 5 to Lot 25, inclusive; Con. 6 from Lot 6 to Lot 25, inclusive, and Lots 5, 6, 7 and 8, North Boundary.

PART I—Persons entitled to vote at both Municipal Elections and Elections to the Legislative Assembly.

Jurors	No. on Roll	NAME	No. of Lot	Con. or St.	Description of Voter	O. A.	Occupation
j	220	Abbott, F. G.	12, 14	4, 5	f, m f	2	farmer
	221	Abbott, Ernest	12	4	fs, m f	2	farmer
	229	Armitage, William	14	4	f, m f	2	farmer
j	228	Armitage, Joseph A.	14	4	f, m f	2	farmer
j	230	Armitage, Michael	n half 15	4	f, m f	2	farmer
j	232	Atkinson, John S.	16	4	f, m f	2	farmer
j	239	Abbott, John	20	4	f, m f	2	farmer
	282	Armitage, George	n half 12	5	cc, m f	2	farmer
j	284	Armitage, Thomas	n half 13	5	f, m f	2	farmer
j	295	Abbott, Thomas	n half 21, 21	5, 6	f, m f	2	farmer
j	580	Atkinson, William	n half 6	n b	f, m f	10	farmer
j	583	Atkinson, John	s half 6, e pt 5 n b		f, m f	10	farmer
	584	Atkinson, James A.	s half 6	n b	fs, m f	10	farmer
	582	Atkinson, George	n half 6	n b	fs, m f	10	farmer
	222	Abbott, Alonzo	12	4	fs, m f	2	farmer
	581	Atkinson, Henry	n half 6	n b	fs, m f	10	farmer
	585	Atkinson, Alex	s half 6	n b	fs, m f	10	farmer
	296	Abbott, Clarence	n half 21	5	fs, m f	2	farmer
	223	Abbott, William	12	4	fs, m f	10	farmer
	224	Abbott, Benj.	12	4	fs, m f	10	farmer
	586	Atkinson, Milton	s half 6	n b	fs, m f	10	farmer
j	279	Blackwell, Robert	10	5	f, m f	10	farmer
	278	Blackwell, George	10	5	f, m f	10	farmer
j	288	Blackwell, Freeman	18	5	f, m f	2	farmer

LIST OF VOTERS

Jurors	No. on Roll	NAME	No. of Lot	Con. or St	Description of Voter	Age	Occupation
j	341	Bennett, Thomas	16, 19, o p	6	f, m f	2	farmer
	342	Bennett, John	19	6	fs, m f	2	farmer
	343	Bennett, James	19	6	fs, m f	2	farmer
	344	Bennett, Joseph	19	6	fs, m f	2	farmer
	340	Bennett, Thomas	19	6	fs, m f	2	farmer
j	276	Brown, James	8	5	f, m f	10	farmer
	277	Brown, John A.	8	5	fs, m f	10	farmer
j	208	Carroll, Hugh L.	5	4	t, m f	10	farmer
j	209	Carroll, Elijah	5	4	t, m f	10	farmer
j	218	Culbert, William	11	4	f, m f	2	farmer
	219	Culbert, Wilson W.	11	4	fs, m f	2	farmer
j	339	Cain, John	s 1/2 18, n pt 20	6, 7	f, m f	6	farmer
	346	Casey, William	23, 24	6	f, m f	2	farmer
	347	Casey, William	24	6	fs, m f	2	farmer
	348	Casey, James	24	6	fs, m f	2	farmer
	349	Casey, John	24	6	fs, m f	2	farmer
j	345	Carroll, Michael	20	6	f, m f	2	farmer
j	334	Carroll, John	15	6	t, m f	6	farmer
	385	Conway, Patrick	15	6	oc, m f	6	farmer
	336	Conway, Martin	15	6	oc, m f	6	farmer
	591	Culbert, Robert	n pt 7	n b	oc, m f	6	farmer
j	216	Dickens, Thomas	9, 10	4	f, m f	10	farmer
	217	Dickens, Richard	10	4	fs, m f	10	farmer
j	290	Dobbs, Henry	10, 11, o p	5	f, m f	10	farmer
j	281	Dobbs, Joseph	11	5	f, m f	2	farmer
j	283	Dobbs, W. B.	s half 12	5	f, m f	2	farmer
j	588	Davis, Wm.	pt 7, pt 8	n b	f, m f	10	farmer
j	592	Davis, Francis	n 1/2 6, pt 7, pt 8	4, n b	f, m f	10	farmer
j	593	Davis, Nassau	pt 8	n b	fs, m f	10	farmer

Lot 6 to Lot

pal Elec-
y.

Age	Occupation
2	farmer
2	farmer
2	farmer
2	farmer
2	farmer
2	farmer
2	farmer
2	farmer
2	farmer
10	farmer
10	farmer
10	farmer
10	farmer
2	farmer
10	farmer
10	farmer
10	farmer
10	farmer
2	farmer
10	farmer
10	farmer
10	farmer
2	farmer

LIST OF VOTERS

Jurors	No. on Roll	NAME	No. of Lot	Con. or St.	Descrip- tion of Voter	O. P.	Occupation
j	594	Davis, Frederick	pt 8	n b	fs, m f	10	farmer
j	287	Davis, Aaron	17	5	f, m f	2	farmer
j	595	Davis, W. J.	n pt 6	4	fs, m f	10	farmer
	597	Davis, Francis J.	n pt 8	n b	fs, m f	10	farmer
	215	Hodgins, H. W.	8	4	fs, m f	10	farmer
j	213	Hodgins, Richard	8	4	f, m f	10	farmer
j	225	Hodgins, Thomas D.	n half 13	4	f, m f	2	farmer
j	243	Haskett, Samuel	23	4	f, m f	2	farmer
j	247	Hodgins, Wellington	25	4	f, m f	2	farmer
j	298	Harleton, John	n $\frac{1}{2}$ 22, e $\frac{1}{2}$ 22	5, 6	f, m f	2	farmer
	299	Harleton, Thomas	s $\frac{1}{2}$ 22, w $\frac{1}{2}$ 22	5, 6	f, m f	2	farmer
j	301	Haskett, Wellington	23	5	f, m f	2	farmer
	300	Haskett, Walter	23	5	fs, m f	2	farmer
j	304	Haskett, George	s $\frac{1}{2}$ 25, w pt 25	5, 6	f, m f	2	farmer
	214	Hodgins, William J.	8	4	fs, m f	10	farmer
j	227	Hodgins, Samuel	s half 13	4	f, m f	2	farmer
j	240	Hodgins, Henry	21	4	f, m f	2	farmer
j	290	Hodgins, W. E.	19	5	t, m f	2	farmer
	228	Hodgins, Sidney	s half 13	4	fs, m f	2	farmer
	244	Haskett, Mitchell	23	4	fs, m f	2	farmer
	294	Hodgins, Wellington	20	5	fs, m f	2	farmer
j	210	Isaac, James	6 and 7, 7	3, 4	f, m f	10	farmer
	211	Isaac, Arda James	7	4	fs, m f	10	farmer
	212	Isaac, William	7	4	fs, m f	10	farmer
	330	Keeffe, Robert	14, s half 12	6, 7	f, m f	2	farmer
	331	Keeffe, Robert J.	14	6	fs, m f	2	farmer
	332	Keeffe, James T.	14	6	fs, m f	2	farmer
	333	Keeffe, Michael	14	6	fs, m f	2	farmer

LIST OF VOTERS

Occupation	Jurors	No. on Roll	NAME	No. of Lot	Con. or St	Description of Voter	P. O.	Occupation
farmer	j	578	Luker, Richard	w pt 5	n b	f, m f	10	farmer
farmer								
farmer								
farmer	j	324	Meagher, James	12, a half 19	6, 7	f, m f	6	farmer
	j	321	McLaughlin, John	s half 10	6	f, m f	6	farmer
		325	Meagher, John	12	6	fs, m f	6	farmer
		327	Meagher, Patrick	12	6	fs, m f	6	farmer
farmer	j	297	Morgan, Wellington	s half 21	5	f, m f	2	farmer
farmer		326	Meagher, Edward	12	6	fs, m f	2	farmer
farmer								
farmer	j	234	Neil, Richard	17	4	f, m f	2	farmer
farmer	j	286	Neil, F. H.	19	4	f, m f	2	farmer
farmer		237	Neil, Daniel	s half 19	4	f, m f	2	farmer
farmer								
farmer	j	273	Ogden, Thomas	9, 8	5	t, m f	10	farmer
farmer	j	274	Ogden, Nathaniel	9, 8	5	t, m f	10	farmer
farmer								
farmer	j	231	Phillips, Daniel	s half 15	4	f, m f	2	farmer
farmer	j	235	Powe, William N.	e half 18	4	f, m f	2	farmer
farmer								
farmer	j	286	Quigley, Daniel	16	5	f, m f	3	farmer
farmer	j	351	Quigley, John	e pt 25	6	f, m f	2	farmer
		352	Quigley, Thomas	e pt 25	6	fs, m f	2	farmer
farmer		350	Quigley, John	e pt 25	6	fs, m f	2	farmer
farmer								
farmer	j	322	Ryder, James	11	6	f, m f	2	farmer
		323	Ryder, Patrick	11	6	f, m f	2	farmer
farmer								
farmer	j	587	Smith, William J.	s half 6, o p	4	f, m f	10	farmer
farmer	j	245	Sceli, Thomas	n half 25, 24	5, 4	f, m f	2	farmer
farmer	j	246	Sceli, Alexander	24	4	f, m f	2	farmer

Jurors	No. on Roll	NAME	No. of Lot	Con. or St.	Description of Voter	P. O.	Occupation
j	272	Turner, William	7	5	f, m f	10	farmer
j	242	Thompson, Joseph	s half 22	4	oo, m f	2	farmer
j	337	Thompson, William	17	6	f, m f	2	farmer
j	241	Thompson, James Eli	22	4	t, m f	2	farmer

PART 2—Persons entitled to vote at Municipal Elections only

	285	Armitage, J. R.	s half 13	5	f	2	
	589	Culbert, Henry	n pt 7	n b	t	10	farmer
	590	Culbert, Richard	n pt 7	n b	t	10	farmer
	364	Donnelly, Patrick	n half 18	6	f		
	365	Donnelly, Robert	n half 18	6	f		
	291	Hodgins, John	19	5	f	2	farmer
	293	Hodgins, Mrs. T. C.	20	5	f	2	widow
j	303	Haskett, William	24	5	f	2	farmer
	292	Hodgins, Wm. H.	19	5	f	2	farmer
	328	Keeffe, James	n $\frac{1}{2}$ 10, s $\frac{1}{2}$ 9	6	f	6	farmer
	329	Keeffe, Thomas	13, 13	6, 7	f	6	farmer
	579	Luker, Robert	w pt 5	n b	f	10	farmer

PART 3—Persons entitled to vote at Elections to the Legislative Assembly only

	233	Armitage, Fred	16	4	m f	2	farmer
	238	Armitage, Elijah	19	4	m f	2	farmer
	302	Corkerly, Joseph	23	5	m f	2	laborer
	338	Fogarty, Martin	17	6	m f	6	farmer
	289	Harding, Robert	18	5	m f	2	laborer
	275	Naidgear, William	9	5	m f	2	laborer
	248	Perley, William	25	4	n. f	2	farmer
	305	Wilford, John	s half 25	5	m f	2	laborer

Comp
includ
S, B ;

PAR

Jurors
N
o
R

j

j

4

4

4

j

j

j

j

j

j

j

j

j

j

j

j

j

j

j

j

j

j

j

j

j

j

P. O.	Occupation
-------	------------

POLLING SUB-DIVISION No 4

Comprising Con. 7 from Lots 11 to 30, inclusive, Cons 8 and 9 from Lot 13 to Lot 33, inclusive; Con. 10 from Lot 17 to Lot 32, inclusive: Lots numbered 1 to 7, inclusive, S, B; Lots numbered 9 to 16, inclusive, North Boundary.

PART I—Persons entitled to vote at both Municipal Elections and Elections to the Legislative Assembly.

10 farmer
 2 farmer
 2 farmer
 2 farmer

 2
 10 farmer
 10 farmer

 2 farmer
 2 widow
 2 farmer
 2 farmer

 6 farmer
 6 farmer
 10 farmer

 2 farmer
 2
 2 laborer
 6 farmer
 2 laborer
 2 laborer
 2 farmer
 2 laborer

Jurors	No. on Roll	NAME	No. of Lot	Con. or St	Description of Voter	P. O.	Occupation
j	371	Brown, Edward	16	7	t, m f	2	farmer
j	402	Breen, Michael	s ½ 30, s ½ 29	7, 11	f, m f	2	farmer
	440	Breen, John	30	8	fs, m f	2	farmer
	441	Breen, George	30	8	fs, m f	2	farmer
j	444	Blake, Michael	33	8	f, m f	7	farmer
j	470	Breen, Patrick	30, 30	9, 10	f, m f	7	farmer
j	479	Bryan, James B.	19, 20	10, n b	f, m f	5	farmer
j	485	Beatson, Joseph	24, s pt 25	10, 11	f, m f	5	farmer
j	620	Brooks, Philip	16	n b	f, m f	6	farmer
	621	Brooks, William A.	16	n b	fs, m f	6	farmer
	478	Breen, George	30	9	fs, m f	7	farmer
j	658	Blake, Elias D.	pt 2	s b	f, m f	7	farmer
	486	Beatson, John W.	24	10	fs, m f	5	farmer
j	472	Benn. Hugh	32	9	f, m f	6	farmer
j	400	Carroll, James	15	7	f, m f	6	farmer
j	427	Carrigan, John	24	8	f, m f	2	farmer
j	468	Carrigan, James	29	9	f, m f	5	farmer
j	443	Carrigan, William	32	8	f, m f	2	farmer
	469	Carrigan, Edward	29	9	fs, m f	5	farmer
	484	Carty, Dennis	w ½, n ½ 21	10	f, m f	5	farmer
	435	Dewan, James	28	8	fs, m f	2	farmer
	434	Dewan, John	28	8	fs, m f	2	farmer

the Legis-

LIST OF VOTERS

Jurors	No. on Roll	NAME	No. of Lot	Con. or St.	Description of Voter	P. O.	Occupation
	433	Dewan, William	28	8	fs, m f	2	farmer
	436	Dewan, Patrick	28	8	fs, m f	2	farmer
	619	Dengham, Wm.	pt 15	n b	oc, m f	6	farmer
j	420	Grace, Michael	19	8	f, m f	6	farmer
j	460	Galliher, William	24	9	oc, m f	6	farmer
	455	Hodgson, J. W.	16	9	oc, m f	6	farmer
	451	Heenan, James	20, 20, s $\frac{1}{2}$ 20	8, 9, 10	f, m f	6	farmer
	452	Heenan, Anthony	20	9	fs, m f	6	farmer
	453	Heenan, Patrick	20	9	fs, m f	6	farmer
	454	Heenan, Dennis	20	9	fs, m f	6	farmer
j	456	Heenan, Dennis	21, n half 22	9	f, m f	6	farmer
j	457	Heenan, Michael	21	9	f, m f	6	farmer
	481	Hodgins, William	n $\frac{1}{2}$ 20, pt 22	10	f, m f	5	farmer
	482	Hodgins, William	n half 20	16	fs, m f	5	farmer
	483	Hodgins, Edward	n half 20	10	fs, m f	5	farmer
j	488	Ianson, George	28, 27	10, 9	f, m f	5	farmer
j	489	Ianson, Thomas	27	9	f, m f	5	farmer
		√					
j	461	Jackson, William	e $\frac{1}{2}$ 25, pt 26, 27	9, 10	f, m f	2	farmer
	462	Jackson, Michael	e half 25	9	fs, m f	6	farmer
	414	Kelly, James	n half 15	8	fs, m f	6	farmer
j	596	Kelly, James	9	n b	f, m f	6	farmer
	598	Kelly, Jeremiah	9	n b	fs, m f	6	farmer
j	603	Kensells, Thomas	12	n b	f, m f	6	farmer
	599	Kelly, Joseph	9	n b	fs, m f	6	farmer
	415	Kelly, John	n half 15	8	fs, m f	6	farmer

LIST OF VOTERS

Occupation	Jurors	No. on Roll	NAME	No. of Lot	Con. or St	Description of Voter	Ac	Occupation
farmer	j	419	Lamphier, James	18	8	f, m f	6	farmer
farmer	j	448	Lamphier, Anthony jr.	18	9	f, m f	6	farmer
farmer		449	Lamphier, Anthony sr.	18	9	oc, m f	6	farmer
		669	Langford, Alex.	6	s b	f, m f	7	farmer
	j	668	Langford, Walter	6	s b	f, m f	7	farmer
farmer	j	670	Langford, William	7	s b	f, m f	5	farmer
farmer		905	Langford, Isaac	7	s b	f, m f	5	farmer
	j	494	Langford Robert	31	10	f, m f	5	farmer
		662	Lawrence, George	s half 3	s b	oc, m f	7	farmer
farmer		366	McGee, James	s half 11	7	f, m f	6	farmer
farmer	j	381	McLaughlin, John	24	7	f, m f	2	farmer
farmer		397	McGee, William	s ½ 29, n ½ 30	7	f, m f	2	farmer
farmer		400	McGee, Martin	s ½ 29, n ½ 30	7	fs, m f	2	farmer
farmer		398	McGee, Michael	s ½ 29, n ½ 30	7	fs, m f	2	farmer
farmer		399	McGee, Edward	s ½ 29, n ½ 30	7	fs, m f	2	farmer
farmer	j	410	McLaughlin, Martin	14	8	f, m f	6	farmer
		411	McLaughlin, Ambrose	14	8	fs, m f	6	farmer
	j	423	Mitchell, Patrick	23, 17, o p	8, 9	f, m f	6	farmer
farmer		383	McLaughlin, Joseph	24	7	fs, m f	6	farmer
farmer		607	McGee, James	e pt 13	n b	fs, m f	6	farmer
		424	Mitchell, Thomas	23	8	fs, m f	2	farmer
		442	McDonald, Jeremiah	s half 31	8	f, m f	2	farmer
farmer		384	McLaughlin, Thomas	24	7	fs, m f	2	farmer
farmer	j	446	McCarthy, Joseph	n half 15	9	f, m f	6	farmer
	j	474	Mara, Michael	pt 17, pt 19	10, n b	f, m f	5	farmer
farmer	j	487	MacKey, Timothy	s ½ 25, n ½ 26	10	f, m f	5	farmer
farmer	j	600	McIlhargy, Dennis	s pt 10, n ½ 9	n b, 6	f, m f	6	farmer
farmer	j	605	McGee, Patrick	n w pt 13, n ½ 11	n b, 7	f, m f	6	farmer
farmer		606	McGee, Patrick sr.	e pt 13	n b	f, m f	6	farmer
farmer		608	McGee, Jeremiah	pt 13	n b	fs, m f	6	farmer
farmer	j	609	Morley, Joseph	n pt 14	n b	f, m f	6	farmer

LIST OF VOTERS

Jurors	No. on Roll	NAME	No. of Lot	Con. or St.	Description of Voter	P. O.	Occupation
j	618	Milson, Jabez	pt 15	n b	f, m f	6	farmer
	614	Milson, John H.	pt 15	n b	f, m f	6	farmer
j	663	McIlhargy, John	4	s b	f, m f	7	farmer
	665	McIlhargy, Daniel	4	s b	fs, m f	7	farmer
	615	Milson, George H.	pt 15	n b	oc, m f	6	farmer
	663	Mellhargy, Archibald	4	s b	fs, m f	7	farmer
	612	Morkin, Timothy	s e pt 13	n b	fs, m f	6	farmer
	613	Morkin, John	s e pt 13	n b	fs, m f	6	farmer
j	466	Madigan, Timothy	28	9	f, m f	5	farmer
	385	McLaughlin, Thomas	pt 25	7	fs, m f	2	farmer
	425	Mitchell, Patrick	23	8	fs, m f	2	farmer
	386	McLaughlin, William	pt 25	7	fs, m f	2	farmer
	412	McLaughlin, Martin	s $\frac{1}{2}$ 29, n $\frac{1}{2}$ 30	7	fs, m f	2	farmer
	401	McGee, John	14	8	fs, m f	6	farmer
	426	Mitchell, Joseph	23	8	fs, m f	6	farmer
	467	Madigan, Rhody	28	9	f, m f	5	farmer
j	471	Nangle, John T.	31	9	f, m f	7	farmer
	610	Nairn, William	n pt 14	n b	oc, m f	6	farmer
j	659	Nangle, William	pt 2	s b	f, m f	7	farmer
	616	Ogden, Wilham	pt 15	n b	f, m f	6	blacksmith
j	601	Ogden, John	n pt 10	n b	t, m f	6	farmer
j	368	Patton, James	s half 12	7	f, m f	6	farmer
j	417	Powe, Michael	17, op	8	f, m f	6	farmer
	418	Powe, W. C.	17	8	fs, m f	6	farmer
j	475	Powe, James	18	10	f, m f	5	farmer
	476	Powe, Patrick	18	10	fs, m f	5	farmer
	477	Powe, Joseph	18	10	fs, m f	5	farmer
	478	Powe, Daniel	18	10	fs, m f	5	farmer

LIST OF VOTERS

Occupation	Jurors	No. on Roll	NAME	No. of Lot	Con. or St.	Description of Voter	P.	Occupation
farmer	j	373	Quigley, Michael	n 1/2 18, s pt 17	7	t, m f	2	farmer.
farmer								
farmer	j	390	Ryder, Joseph	26	7	f, m f	2	farmer
farmer		389	Ryder, William	26	7	fs, m f	2	farmer
farmer	j	377	Ryder, James	pt 20	7	f, m f	2	farmer
farmer	j	387	Ryder, James	26. pt 27 & 25, o p 7		f, m f	2	farmer
farmer		392	Ryder, James	w half 27	7	fs, m f	2	farmer
farmer	j	388	Ryder, John	26	7	f, m f	2	farmer
farmer	j	391	Ryder, John	s 1/2 27, w 1/2 27, o p 6, 7		f, m f	2	farmer
farmer	j	428	Ryder, William	s e pt 26 pt 27 n 1/2 21 8		f, m f	2	farmer
farmer	j	447	Ryan, Martin	s half 15, pt 15 9, 8		f, m f	6	farmer
farmer		429	Ryder, W. II.	s e half 26	8	fs, m f	2	farmer
farmer								
farmer								
farmer	j	369	Sullivan, Edward	14	7	f, m f	6	farmer
farmer		430	Sullivan, C. ren	n pt 27	8	f, m f	2	farmer
farmer		491	Shea, Michael	s half 29	10	fs, m f	5	farmer
		431	Sullivan, Daniel	n pt 27	8	fs, m f	2	farmer
farmer		490	Shea, James	29, 28, op	10, 11	f, m f	5	farmer
farmer		492	Shea, Thomas	s half 29	10	fs, m f	5	farmer
farmer		493	Shea, Patrick	s half 29	10	fs, m f	5	farmer
blacksmith		395	Toohy, Dennis	n half 29	7	fs, m f	2	farmer
farmer	j	378	Toohy, William	22	7	f, m f	2	farmer
		379	Toohy, Patrick	22	7	f, m f	2	farmer
farmer	j	393	Toohy, James	n pt 23, 28, 23	7	f, m f	2	farmer
farmer		421	Toohy, Timothy	22	8	f, m f	2	farmer
farmer		394	Toohy, John	n half 29	7	f, m f	6	farmer
farmer		422	Toohy, Cornelius	22	8	fs, m f	2	farmer
farmer	j	458	Toohy, Dennis	23	9	f, m f	2	farmer
farmer								
farmer	j	374	Whalen, John	s 1/2 18, n 1/2 19	7	f, m f	6	farmer

LIST OF VOTERS

Jurors	No. on Roll	NAME	No. of Lot	Con. or St.	Description of Voter	Age	Occupation
j	464	Whalen, W. H.	w half 25	9	f, m f	5	farmer
j	602	Whelihan, Patrick	11	n b	f, m f	6	farmer
j	604	Whelihan, Thomas	11	n b	f, m f	6	farmer
j	375	Whalen, William	n half 19	9	t, m f	6	farmer

PART 2—Persons entitled to vote at Municipal Elections only

439	Breen, Bridget	30, s $\frac{1}{2}$ 29, o p	8	f	2	widow
666	Crunnigan, Michael	5	s b	f	7	farmer
667	Crunnigan, John	5	s b	f	7	farmer
376	Caroll, Michael	n half 19	7	f	6	farmer
432	Dewan, Mrs. Mary	28, o p	8	f	2	widow
495	Flood, Daniel	32	10	f	5	farmer
496	Flood, John	32	10	f	5	farmer
465	Harrigan, Mrs. Mary	pt 26, pt 25	9, 8	f	5	widow
413	Kelly, Mrs. Catherine	n pt 15	8	f	6	widow
416	Lamphier, Honora	16	8	f	6	widow
384	McLaughlin, Mrs. T.	w pt 25, pt 26	7, 6	f	2	widow
611	Morkin, Mrs. Catherine	13, s e pt 14	8, n b	f	6	widow
459	Morkin, Edward	s half 22	9	f	6	farmer
450	McDonald, Andrew	19	9	f	6	farmer

LIST OF VOTERS

27

Jurors	No. on Roll	NAME	No. of Lot	Con. or St	Description of Voter	P. O.	Occupation
	367	Patton, Mrs. Mary	s half 12	7	f	6	widow
	661	Ryan, John	s half 3	s b	f	2	farmer
	372	Ryder, Patrick	16	7	f	2	farmer
	906	Shea, Daniel	s half 29	10	f	2	
	617	Sutherby, Maria	pt 15	n b	oc	6	widow

PART 3—Persons entitled to vote at Elections to the Legislative Assembly only

	437	Dewan, William	28	8	m f	2	farmer
	438	Dewan, Thomas	28	8	m f	2	farmer
	463	Galliher, John	24	9	m f	6	farmer
	480	Hennings, William	19	10	m f	5	farmer
	660	Lucas, Richard	pt 2	s b	m f	7	laborer
	396	O'Shea, Patrick J.	n half 29	7	m f	2	farmer
	380	Toohy, Thomas	21	7	m f	2	farmer

POLLING SUB-DIVISION No. 5

Comprising Cons. 11, 12, 13, 14 and 15; Lots 17 to 31 inclusive, N. B.; Lots No. 8 to 24, inclusive, S. B., and the Villages of Granton and Awmick.

PART I—Persons entitled to vote at both Municipal Elections and Elections to the Legislative Assembly.

Jurors	No. on Roll	NAME	No. of Lot	Con. or St	Description of Voter	P.	Occupation
	822	Arnold, Fred J.	8	w m st V G	f, m f	5	tinsmith
	888	Adamsou, George	4	w m st V A	oc, m f	5	agent
j	510	Barry, John	pt 26, pt 25, o p 11		f, m f	5	farmer
j	626	Brock, John	e pt 17	n b	f, m f	6	farmer
j	633	Brown, John Y.	22	n b	f, m f	5	farmer
j	645	Blatchford, William	w half 28	n b	oc, m f	5	farmer
j	825	Brooks, James E.	10, pt 11, o p	w m ek st V G	f, m f	5	carpenter
j	827	Brooks, F. L.	pt 12, o p	w m st V G	f, m f	5	carpenter
j	832	Bernard, Walter	16	w m st V G	f, m f	5	blacksmith
j	646	Branion, George	w 1/2 28, 5 6 7	n b, e q st V G	f, m f	5	gentleman
	854	Baker, Henry	15, o p	e m st V G	f, m f	5	gentleman
j	838	Baynes, William	pt 2	e m st V G	f, m f	5	merchant
	870	Beatson, Albert	8, 28	e k st V G, 12	f, m f	5	farmer
	867	Butler, William	pt 1	w q st V G	f, m f	5	livery
j	537	Beatson, Albert	28, pt 22, o p	12, 10	t f, m f	5	farmer
	511	Barry, Joseph	n pt 26	11	oc, m f	5	farmer
j	858	Brownlee, Rev. W.	8	e q st V G	t, m f	5	clergyman
	901	Baynes, Charles	5 7	s lc vitt st V A	t, m f	5	gentleman
	902	Baynes, Fred.	5 7	s levitt st V A	t, m f	5	laborer
	903	Baynes, David	5 7	s levitt st V A	t, m f	5	laborer
	504	Carty, Albert	22	11	fs, m f	5	farmer
j	508	Casey, Joseph	24, pt 25	11	f, m f	5	farmer

LIST OF VOTERS

29

Jurors	No. on Roll	NAME	No. of Lot	Con. or St.	Description of Voter	Age	Occupation
j	831	Coxon, Samuel	pt 14, 15	w m st V G	f, m f	5	painter
	848	Cameron, Hugh	7, 7	em, wq st V G	f, m f	5	agent
	871	Cook, Charles	5	w k st V G	f, m f	5	laborer
	877	Carter, Gilbert	12, 13	w k st V G	f, m f	5	laborer
	865	Dann, Alex.	pt 1, o p	w q st V G	f, m f	5	blacksmith
	709	Dykes, James	n e pt 24	s b	f, m f	9	farmer
j	712	Draper, William	pt 24	s b	t, m f	9	farmer
	713	Draper, John	pt 24	s b	fs, m f	9	farmer
	856	Dann, William	pt 8	w q st V G	f, m f	5	V. S.
	857	Davis, Richard	11	w q st V G	f, m f	5	gentleman
j	654	Dinsmore, Edward	n half 29	13	f, m f	5	farmer
	710	Dykes, James	n e pt 24	s b	fs, m f	9	farmer
j	876	Dinsmore, George	12, 13, 14, 15	e k st V G	t, m f	5	agent
	711	Dykes, William	e pt 24	s b	fs, m f	9	farmer
j	851	Eedy, John	13	e m st V G	f, m f	5	gentleman
j	686	Eedy, Fred	s half 13	s b	f, m f	5	farmer
j	543	Foreman, John	pt 25, 7 8	12, w m st V A	f, m f	5	farmer
j	542	Fulton, John	23	12	t, m f	5	farmer
j	916	Foster, Albert	23	n b	oc, m f	5	farmer
j	653	Ferris, John	n pt 30	n b	f, m f	5	farmer
j	697	Foreman, William	w pt 19	s b	f, m f	5	farmer
j	545	Foster, James	23, pt 23	13, n b	t, m f	5	farmer
j	844	Foster, Charles	pt 4, 14	e m st V G	f, m f	5	butcher
j	834	Fuller, Chauncey	18, 19, o p	w m st V G	f, m f	5	gentleman
	896	Ford, George	4	n levitt st V A	f, m f	5	laborer
	886	Foreman, Fred	3	w m st V A	f, m f	5	laborer
j	823	Fotheringham, T.	9, pt 10	w m st V G	t, m f	5	hotelkeeper
	883	Fletcher, John	1	w m st V A	oc, m f	5	laborer

LIST OF VOTERS

Jurors	No. on Roll	NAME	No. of Lot	Con. or St	Description of Voter	P. O	Occupation
	529	Fitzgerald, George	pt 26	12	t, m f	5	gentleman
j	530	Fitzgerald, George jr.	pt 26	12	t, m f	5	gentleman
	884	Fletcher, James	1	w m st	oc, m f	5	gentleman
	526	Grant, William	22, s $\frac{1}{2}$ 21, o p	12	f, m f	5	farmer
	527	Grant, William	22	12	fs, m f	5	farmer
j	540	Gibson, Arthar	30	12	t, m f	5	farmer
	541	Gibson, W. H.	30	12	fs, m f	5	farmer
j	679	Garrett, Gilbert	11, o p	s b	f, m f	5	farmer
j	566	Gowan, Nassau	n $\frac{1}{2}$ 28, pt 14	14, 15	f, m f	5	farmer
j	690	Gowan, Joseph H.	pt 17	s b	f, m f	5	farmer
j	689	Gowan, F. W.	pt 17	s b	f, m f	5	farmer
j	691	Gowan, Benj.	pt 17	s b	f, m f	5	farmer
	817	Grant, James J. P.	4, 4	w m, ek st	V G f, m f	5	pcstmaster
j	820	Grant, Joseph	pt 6 w m st, l op	ek st	V G f, m f	5	merchant
	813	Goulding, C. T.	1	w m st	V G t, m f	5	operator
	837	German, James	7	w k st	V G oc, m f	5	blacksmith
j	627	Gunning, Robt.	18, n e pt 17	n b	t, m f	6	farmer
j	815	German, Horace	3, pt 1	w m e m st	V G t, m f	5	butcher
	625	Hodgson, David	pt 17	n b	fs, m f	6	student
	624	Hodgson, James	pt 17	n b	fs, m f	6	farmer
j	555	Hobbs, Richard S.	30	13	f, m f	5	farmer
	622	Hodgson, William	pt 17, 16	n b, 9	f, m f	6	farmer
	850	Hobbs, James	pt 11, 12	e m st	V G f m f	6	gentleman
j	698	Hudson, W. H.	e half 19	s b	f, m f	5	farmer
j	828	Harriston, Rev. T. E.	13	w m st	V G oc, m f	5	clergyman
	623	Hodgson, Thomas	pt 17	n b	fs, m f	6	farmer
j	895	Ironsides, Alfred	s $\frac{1}{2}$ 29 o p	13	f, m f	5	millar

LIST OF VOTERS

Jurors	No. on Roll	NAME	No. of Lot	Con. or St.	Description of Voter	P. O.	Occupation
j	553	Jermyn, David S.	28	13	f, m f	5	farmer
	571	Jermyn, John	30	14	f, m f	5	farmer
	681	Jackson, Richard	14, 15	s b	f, m f	5	farmer
j	586	Jermyn, Richard	27, 5 6 7	12, eq st V G	f, m f	5	farmer
	682	Jackson, Thomas R.	14	s b	fs, m f	5	farmer
	904	Jamieson, George	A	s levitt st	t, m f	5	pumpmaker
j	500	Kelly, James	20	11	f, m f	5	farmer
j	501	Kennedy, John	21	11	f, m f	5	farmer
j	649	Keith, George	w ½ 29	n b	f, m f	9	farmer
	502	Kennedy, Joseph	21	11	f, m f	5	farmer
	569	Lindsay, Warner	s ½ 28	14	fs, m f	5	farmer
j	513	Langford, Alex. A.	s ½ 26	11	oc, m f	5	farmer
	518	Langford, Alex.	30, 1	11 em st V A	f, m f	5	farmer
	519	Langford, Edward	30	11	fs, m f	5	farmer
	548	Levitt, William	pt 25	13	f, m f	5	farmer
	897	Levitt, William	5, 7	levitt st V A	f, m f	5	laborer
	556	Langford, Edgar	s half 29	13	fs, m f	5	farmer
	557	Langford, James	s half 29	13	oc, m f	5	engineer
j	567	Lindsay, Joseph	s ½ 28, n ½ 29, 23 14, 15		f, m f	5	farmer
j	575	Lindsay, Mark	s half 28	14	f, m f	5	farmer
	568	Lindsay, W. A.	s half 28	14	fs, m f	5	farmer
j	572	Langford, Nelson	n half 27	15	f, m f	5	farmer
j	696	Langford, Ephriam	e pt 18	s b	f, m f	5	farmer
j	576	Langford, Ezra	s w pt 29	15	f, m f	5	farmer
	900	Langford, John	A	John st V A	f, m f	5	sawyer
j	671	Langford, Isaac A.	8	s b	f, m f	5	farmer
j	869	Langford, William A.	6, e half 31	wk st VG, 12	f, m f	5	farmer
j	695	Langford, Ernest	w pt 18, pt 29	s b, 15	f, m f	5	farmer
	704	Little, John	pt 24	s b	f, m f	5	farmer

LIST OF VOTERS

Juror	No. on Roll	NAME	No. of Lot	Con. or St	Description of Voter	P. O.	Occupation
	814	Langford, Elias	2, 2	e k, w m st	VG f, m f	5	laborer
j	818	Lang, Hugh, M. D.	5, 5	w m, ek st	VG f, m f	5	druggist
	819	Lang, Charles A	5	w m st	VG f, m f	5	student
j	843	Lankin, John	p 3, pt 4	e m, w q st	VG f, m f	5	hotelkeeper
	860	Lankin, Albert	5	w qn st	VG f, m f	5	laborer
	893	Leslie, James	7 8 9	e m st	V A f, m f	5	laborer
	672	Langford, Harold	8	s b	fs, m f	5	farmer
j	703	Little, Thomas D.	pt 24	s b	oc, m f	9	farmer
	887	Lankin, James	4	w m st	V A f, m f	5	laborer
	885	Lambourne, William	2	w m st	V A f, m f	5	laborer
j	899	Langford, Abner	R K	Jn st	V A f, m f	5	sawyer
	875	Langford, Elijah	7 9 9	w k st	VG f, m f	5	laborer
j	647	Mossey, J. E.	e pt 28	n b	f, m f	5	farmer
	509	Mackey, Valentine	pt 25	11	f, m f	5	farmer
	524	Meagher, Edward	27	11	f, m f	5	farmer
	515	Meagher, John	27	11	fs, m f	5	farmer
	516	Meagher, James	27	11	fs, m f	5	farmer
	631	Mowbray, Harvey	21	n b	fs, m f	5	farmer
	652	McConnel, John	e half 29	n b	fs, m f	5	farmer
	853	McGowan, James	14	e m st	oc, m f	5	gentleman
	630	Mowbray, Philip	21	n b	f, m f	5	farmer
	651	McCounell, Andrew	e half 29	n b	f, m f	9	farmer
j	676	McRoberts, Andrew	10	s b	t, m f	5	farmer
	675	McRoberts, Charles	9	s b	fs, m f	5	farmer
	674	McRoberts, Alfred	9	s b	fs, m f	5	farmer
j	701	McLaughlin, Alex.	22	s b	f, m f	9	farmer
	821	Murray, Matthew	pt 6	w m st	VG t, m f	5	merchant
j	846	Murray, John E.	5, 6 4	e m, w q st	VG f, m f	5	merchant
	873	Mack, W. J.	1	w k st	VG f, m f	6	laborer
	505	McCarthy, Michael	23, 23	11, 10	f, m f	5	farmer
	507	McCarthy, Jeremiah	23	11	fs, m f	5	farmer
	506	McCarthy, James	23	11	fs, m f	5	farmer

LIST OF VOTERS

33

Jurors	No. on Roll	NAME	No. of Lot	Con. or St.	Description of Voter	O. A.	Occupation
j	549	Nesbitt, George	26, w half 31	13, 12	oc, m f	5	farmer
	517	O'Donnell, Thomas	n half 29	11	oc, m f	5	laborer
j	520	Peaskett, John	31	11	t, m f	5	farmer
	521	Peaskett, T. J.	31	11	fs, m f	5	farmer
j	702	Perrin, Ed.	21	s b	f, m f	9	farmer
	826	Pidd, Layton	pt 12	w m st V G	f, m f	5	builder
j	872	Pullybank, Edwin	2 3 4	w k st V G	f, m f	5	mason
j	634	Rigney, Thomas	24	n b	f, m f	5	farmer
	635	Rigney, James E.	24	n b	fs, m f	5	farmer
	643	Radcliffe, Robert	pt 27	n b	f, m f	5	farmer
j	642	Radcliffe, R. H.	n pt 27	n b	f, m f	5	farmer
	644	Radcliffe, W. D.	27	n b	fs, m f	5	farmer
	654	Robinson, Andrew	pt 31	n b	f, m f	5	farmer
	898	Robinson, Rcbert	J K L	Jn st V A	f, m f	5	laborer
j	523	Raycroft, Richard jr.	n half 21	12	t, m f	5	farmer
j	538	Rathburn, George	29	12	oc, m f	5	farmer
j	685	Rowell, John	n half 13	s b	f, m f	5	farmer
j	632	Shipley, Thomas	22	n b	t, m f	5	farmer
j	879	Shipley, A. L.	G T R station	V G	oc, m f	5	GTRagent
	680	Shaw, Thomas	10	s b	oc, m f	5	laborer
	638	Stanley, T. H.	n half 26	n b	fs, m f	5	farmer
j	637	Stanley, R. D.	n $\frac{1}{2}$ 26, pt 25	n b	f, m f	5	farmer
j	639	Stanley, W. D.	s $\frac{1}{2}$ 26, s pt 25	n b	f, m f	5	farmer
	640	Stanley, J. R.	s half 26	n b	fs, m f	5	student
	699	Smith, Robert	20, e pt 29	s b, 15	f, m f	5	farmer
j	878	Squires, Thomas	14, w pt 24	w k st VG, 12	t, m f	5	farmer

LIST OF VOTERS

Jurors	No. on Roll	NAME	No. of Lot	Con. or St	Description of Voter	P. O.	Occupation
	863	Sandburn, Henry	2, 3	w q st V G	t, m f	5	laborer
	894	Shipley, John T.	7 8 9	e m st V A	t, m f	5	laborer
j	940	Stewart, W. B.	8	e m st	f, m f	5	saddler
	861	Shoebottom, H.	pt 4	w qn st V G	f, m f	5	mail carrier
	641	Stanley, V. M.	s half 26	14	fs, m f	5	farmer
j	868	Thompson, C. W., M.D.	pt 3	e q st V G	t, m f	5	physician
	498	Westman, S. J.	19	11	fr, m f	5	farmer
	497	Westman, James	19 o p	11	f, m f	5	farmer
	499	Westman, A. H.	19	11	fs, m f	5	farmer
j	552	Westman, William	28	13	t, m f	5	farmer
	552	Westman, Charles E.	pt 26	12	fs, m f	5	farmer
j	531	Westman, George	26	12	f, m f	5	farmer
	563	Westman, Alex.	27	14	fs, m f	5	farmer
j	561	Westman, Isaac	27	14	f, m f	5	farmer
	565	Westman, Warner	27	14	fs, m f	5	farmer
	564	Westman, Isaac F.	27	14	fs, m f	5	farmer
j	692	Westman, Douglas	16	s b	f, m f	5	farmer
	694	Westman, Henry sr.	w half 16	s b	oc, m f	5	farmer
	862	Westman, Cornelius	pt 3, 4	e m st V G	f, m f	5	farmer
j	547	Wass, Noah	pt 24	13	f, m f	5	farmer
j	551	Wilson, John	27	13	f, m f	5	farmer
j	656	Wilson, Ridgeway	31	n b	f, m f	9	farmer
j	657	Wilson, Wilham	pt 29	n b	f, m f	9	farmer
	559	Wallis, James	26	14	f, m f	5	farmer
	560	Wallis, John E.	26	14	fs, m f	5	farmer
j	683	Webb, Archibald	12	s b	f, m f	5	farmer
	705	White, Samuel	s half 23	s b	f, m f	9	farmer
	706	White, S. W.	pt 23	s b	fs, m f	9	farmer
	684	Webb, Isaac	12	s b	fs, m f	5	farmer

LIST OF VOTERS

Jurors	No. on Roll	NAME	No. of Lot	Con. or St.	Description of Voter	O. P.	Occupation
	852	Weir, George	13	e m st V G	oc, m f	5	laborer
	707	White, Thomas	pt 23	s b	fs, m f	9	farmer
	562	Westman, Cameron	27	14	fs, m f	5	farmer
j	708	Wright, Joseph	s pt 24	s b	f, m f	9	farmer
j	881	Webb, C. M.	1, 7, 7	e m, e k st V G	f, m f	5	merchant
	891	White, D. G.	2	e m st V A	t, m f	5	shoemaker
j	570	Wallis, Cicero	s half 29	14	f, m f	5	farmer
	840	Wreford, Aaron	pt 1	e m st V G	f, m f	5	tailor

PART 2—Persons entitled to vote at Municipal Elections only

	544	Brown, W. J.	23	12	f	5	farmer
	907	Brooks, Mrs. M.	10, 11	e k st V G	f	5	widow
	833	Beamish, Mrs. M.	17	e m st V G	f	5	widow
	558	Crawford, David	25	14	f	5	farmer
	563	Carty, Mrs. Sarah	22	11	f	5	widow
	874	Carter, J. W.	grain storehouse	V G	f	5	
	525	Dearness, Mrs. John	n half 21	12	f	5	
	524	Dearness, John	s. half 21	12	f		I. P. S.
	687	Finch, Hugh	pt 17, 29	s b, 15	f		
	908	Foreman, Mrs. C.	7, 8	w m st V A	f	5	widow
	677	Garrett, W. A.	10	s b	f	5	merchant
	688	Gowan, Mrs. Jane	pt 17	s b	f	5	widow
	628	Gunning, James	19	n b	t	6	
	492	Hobbs, Miss Jane	pt 26	12	f	5	
	853	Jermyn, Mrs. E.	w half 6	w q st V G	f		
	650	Keith, Robt.	w half 29	n b	f	9	farmer

LIST OF VOTERS

Jurors	No. on Roll	NAME	No. of Lot	Con. or St	Description of Voter	P. O.	Occupation.
	909	Levitt, John	1, 2, 3	e q st V G	f		
	577	Langford, Mrs. Ann	s w pt 29	15	f	5	widow
	336	Lawton, Mrs. Joseph	pt 25	n b	f	5	widow
	573	Langford, Samuel	s half 27	15	f		
	910	Langford, George	pt 29	15	f		
	648	Mossey, Joseph	e pt 28	n b	f	9	
	882	McBride, Henry	1	w m st V G	f		
	824	Middleton, Wm.	9, pt 10	w m st V G	f		
	673	McRoberts, Mrs. Jas.	9	s b	f	5	widow
	522	Patterson, William	31	11	f	5	farmer
	855	Parke, Mrs. James	16	e m st V G	f	5	widow
	539	Rathburn, Ezra	29	12	f		
	889	Radcliffe, Margaret	5, 6	w m st V A	f	5	widow
	629	Raycraft, R.	13	n b	f		
	835	Stewart, Marion	pt 23	12	f	5	widow
	546	Tyreman, D.	23	13	f		
	655	Wilson, Mrs. Sarah	pt 30	n b	f	9	widow
	918	Wilson, Mrs. E.	27	13	f	5	widow
	864	Wood, Benjamin	2, 3	w q st V G	f		farmer
	892	White, H. A. L.	2	e m st V A	f		lawyer
	915	Webb, C. M.	7, o p	w m st V G	f		merchant
	693	Westman, Henry	e half 16	s b	f		
	678	Walden, George	s e pt 11	s b	f	5	farmer

C
w
by
E
(1
R
als
qu
up
cer
in

LIST OF VOTERS

Jurors	No. on Roll	NAME	No. of Lot	Con. or St.	Description of Voter	Sex	Occupation
	912	Butler, R. H.	9	w m st V G	m f	5	laborer
	911	Butler, E.	pt 1	w q st V G	m f	5	laborer
	839	Baynes, Edmund	pt 2	e m st V G	m f	5	laborer
	913	German, Spence	pt 3	e m st V G	m f	5	laborer
	533	Gowan, William	pt 26	12	m f	5	laborer
	847	Hough, John	5, 6	e m st V G	m f	5	clerk
	816	Jamieson, William	3	w m st V G	m f	5	baker
	866	Johns, John	pt 1	w q st V G	m f	5	blacksmith
	700	Morfit, John	20	s b	m f	9	farmer
	914	Mossip, H. B.	5	w m st V G	m f	5	druggist
	528	McLean, Alex.	22	12	m f	5	farmer
	841	Wreford, Charles	pt 2	e m st V G	m f	5	tailor
	842	Wreford, Henry	pt 2	e m st V G	m f	5	tailor

I, W. D. Stanley, Clerk of the Municipality of the Township of Biddulph, in the County of Middlesex, do hereby certify that Parts One and Three (1 and 3) of the within Voters' List for the year 1897 constitute a correct list of all persons appearing by the last Revised Assessment Roll of the said Municipality to be entitled to vote at Elections for Members of the Legislative Assembly; and that parts One and Two (1 and 2) constitute a correct list for the same year of all persons appearing by the said Roll to be entitled to vote at Municipal Elections in the said Municipality. And I also certify that the aggregate number of names of persons on the said list who are qualified to serve as Jurors, is three hundred and sixty-six (366). And I hereby call upon all electors to examine the said list, and if any omission or other errors are perceived therein, to take immediate proceedings to have the said errors corrected according to law.

Dated at my office this 5th day of July, 1897.

This said list was first posted up in my office on the 12th day August, 1897.

W. D. STANLEY,
Clerk Township of Biddulph, Granton P. O.

