

**CIHM
Microfiche
Series
(Monographs)**

**ICMH
Collection de
microfiches
(monographies)**



Canadian Institute for Historical Microreproductions / Institut canadien de microreproductions historiques

© 1997

The copy filmed here has been reproduced thanks to the generosity of:

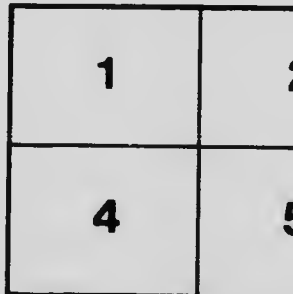
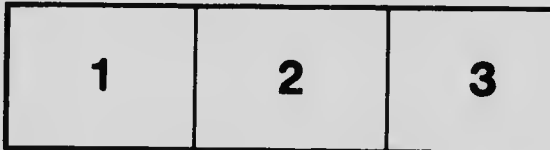
Legislative Library
Victoria

The images appearing here are the best quality possible considering the condition and legibility of the original copy and in keeping with the filming contract specifications.

Original copies in printed paper covers are filmed beginning with the front cover and ending on the last page with a printed or illustrated impression, or the back cover when appropriate. All other original copies are filmed beginning on the first page with a printed or illustrated impression, and ending on the last page with a printed or illustrated impression.

The last recorded frame on each microfiche sheet contains the symbol \rightarrow (meaning "CONTINUED"), or the symbol ∇ (meaning "END"), whichever applies.

Maps, plates, charts, etc., may be filmed at different reduction ratios. Those too large to be entirely included in one exposure are filmed beginning in the upper left hand corner, left to right and top to bottom, as many frames as required. The following diagrams illustrate the method:



L'exemplaire filmé fut reproduit grâce à la générosité de:

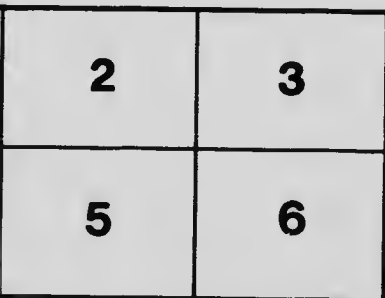
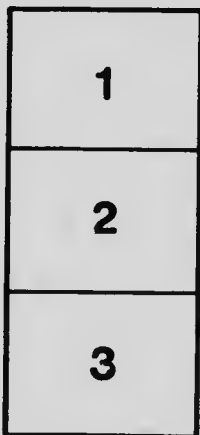
Legislative Library
Victoria

Les images suivantes ont été reproduites avec le plus grand soin, compte tenu de la condition et de la netteté de l'exemplaire filmé, et en conformité avec les conditions du contrat de filmage.

Les exemplaires originaux dont la couverture en papier est imprimée sont filmés en commençant par le premier plat et en terminant soit par la dernière page qui comporte une empreinte d'impression ou d'illustration, soit par le second plat, selon le cas. Tous les autres exemplaires originaux sont filmés en commençant par la première page qui comporte une empreinte d'impression ou d'illustration et en terminent par la dernière page qui comporte une telle empreinte.

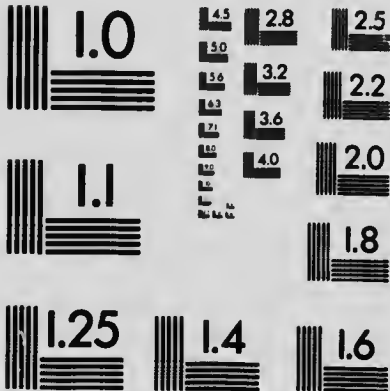
Un des symboles suivants apparaîtra sur la dernière image de chaque microfiche, selon le cas: le symbole \rightarrow signifie "A SUIVRE", le symbole ∇ signifie "FIN".

Les cartes, planches, tableaux, etc., peuvent être filmés à des taux de réduction différents. Lorsque le document est trop grand pour être reproduit en un seul cliché, il est filmé à partir de l'angle supérieur gauche, de gauche à droite, et de haut en bas, en prenant le nombre d'images nécessaire. Les diagrammes suivants illustrent la méthode.



MICROCOPY RESOLUTION TEST CHART

(ANSI and ISO TEST CHART No. 2)



APPLIED IMAGE Inc

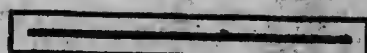
1653 East Main Street
Rochester, New York 14609 USA
(716) 482 - 0300 - Phone
(716) 288 - 5989 - Fax

VANCOUVER

BRITISH COLUMBIA



This Booklet contains
Valuable Information
for the Sportsman,
Tourist and Settler



P.
917.112

V223va

COMPLIMENTS OF

OTEL IRVING

COMMERCIAL RATES
SAMPLE ROOM

COR. COLUMBIA AVE. AND HASTINGS ST., VANCOUVER, B. C.

REFERENCE

BOSTON DENTISTS

DR. A. R. BAKER

For High-Class
Dentistry

407 HASTINGS STREET WEST VANCOUVER, B. C.

COPE & SON

WHOLESALE AND RETAIL

Electric Supplies

House Furnishings & Power Plants

This Hotel was Furnished by Cope & Son

338 HASTINGS STREET

VANCOUVER, B. C.



3 3298 00024 2025

✓

VANCOUVER

BRITISH COLUMBIA

This Booklet contains
Valuable Information
for the Sportsman,
Tourist and Settler

COMPLIMENTS OF

HOTEL IRVING

Cor. Columbia Ave.
and Hastings St.

VANCOUVER, B. C.

PROVINCIAL LIBRARY
VICTORIA, B. C.

P
917.112
V223va

Facts About Vancouver

Vancouver offers more varied attractions to the tourist and sportsman than any city on the Pacific Coast.

The climate is the most equable in Canada.

Stanley Park is the most beautiful and attractive forest in the world, covering 1,000 acres, with 9 miles of roadways and 22 miles of footpaths.

Vancouver has the most modern and best equipped hotels, boarding houses and summer resorts on the Coast.

The city has more asphalt and block streets and cement sidewalks than any other city of its age in Canada.

The water works and sewerage system is second to none.

Vancouver has issued \$4,700,000 in building permits during the year 1907.

Vancouver is the ideal residence city of Canada.

Vancouver's population has almost doubled in the past six years. Its present population is 74,000.

VANCOUVER

BRITISH COLUMBIA

Vancouver, still a civic infant, stands pre-eminently at the front when compared with any other city in Canada in progressiveness and enterprise, as the following facts will show:

Twenty years ago her leading thoroughfares were simply trails through the wilderness of a semi-tropical forest; to-day she is a thoroughly wide-awake, go-ahead and modern city.

Incorporated April 6th, 1863, population	900
Population, 1908	71,000

The population has doubled in the last few years, and is still increasing rapidly.

Thousands are flocking to the city and country, attracted by the vast timber and mineral wealth, the great fisheries, the immense stretches of fine fruit and agricultural lands in our fertile valleys, and the limitless possibilities of the country, all of which spell opportunity. Potentially the richest portion of the Canadian confederation, British Columbia will in time outrival in wealth any other country under the sun.

What Has Been Done in Twenty Years

As a record of what has happened in the past twenty years, the following statistics will be found interesting:

Population	71,000	
Value of City Property	\$ 5,351,000	31
Total Assessed Value of all Real Property in the City	51,726,000	90
Assessment Vancouver County (Provincial)		
Personal Property	\$7,173,505.00	
Income	1,370,849.00	
		\$ 8,544,354.00
Total City Assessment		
Personal Property and Income Tax for Cont. L.		\$3,200,180.00
No. of Public Schools		17
Total Estimated Value of all S. C. L.		
Property, December 31st, 1906	\$ 755,553.12	
Estimated for 1907	150,000.00	
		905,553.12
Average School Attendance	7,000	

McGill College and Model School located here.

Banks and Bank Clearings

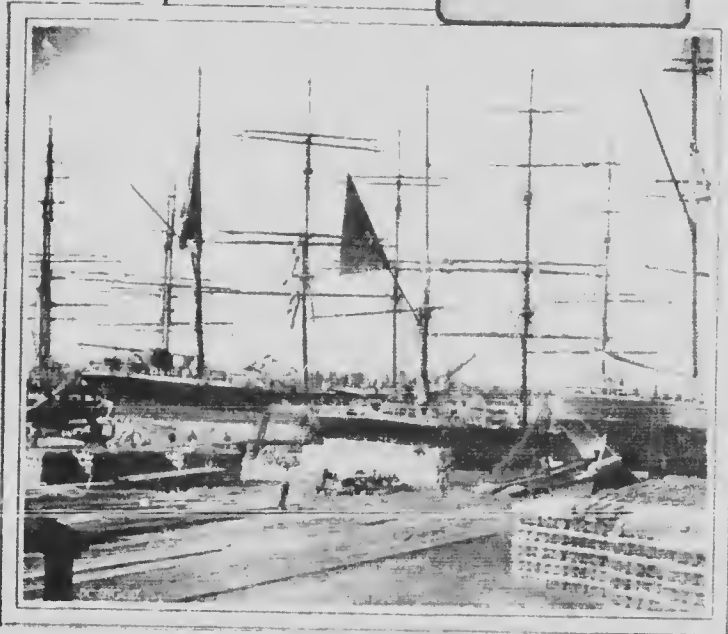
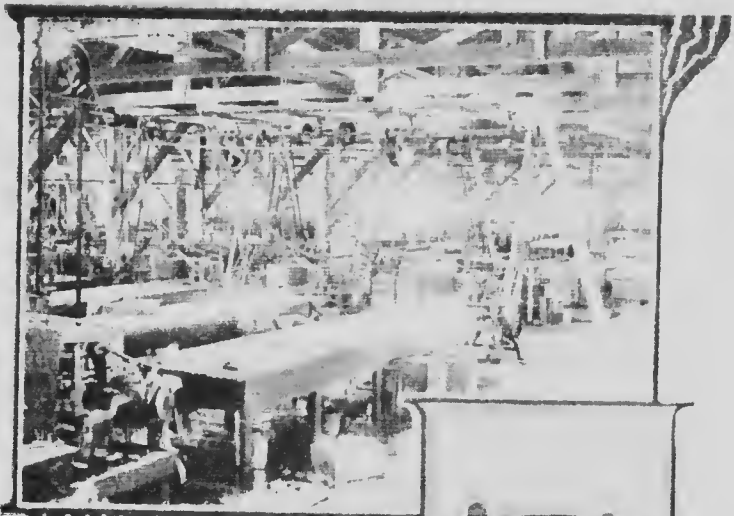
Twelve chartered banks and nine branches are operating within the City limits.

Bank Clearings for 1906	\$132,606,358.00
" " 1905	88,460,391.00
	\$ 44,145,967.00

Percentage increase 50.

According to Bradstreet's Journal for week ending March 9th, 1907, Vancouver heads the list for percentage increase of any city on the American continent, Vancouver's increase being 73.0.

139582



How Vancouver is Growing

Building Permits Issued for 1904 (Vancouver Ranks 4th City in Canada)	\$1,233,910.00
Customs Returns, 1906-07, for 9 months ending March 30th, 1907..	\$ 1,633,190.28
Other Revenue	28,110.96
	————— 1,661,331.21
Land Registry Receipts during 1906 increased over 100%	
Miles of Streets	228
.. .. Paved and Wood Block	12
.. .. Macadamized	101
.. .. Sewers	67
.. .. Cement Walks	58
Miles of Electric Railway	
Vancouver	19
New Westminster	6
Suburban	30
Number of Water Hydrants	500
.. .. Septic Tanks	9
.. .. Public Fountains	9
.. .. Fire Halls	5
.. .. Electric Street Lights	530

Pointers for Capitalists

There is no point in the West that offers better inducements for the investment of capital than Vancouver. Not a vacant store or house can be seen within its precincts. It is the industrial centre of the Canadian far West. It manufactures more lumber for local and foreign trade than any point on the Pacific Coast; has well equipped sugar refinery, salmon canneries, engineering works, sash and door and box factories, foundries, ship-building yards, marine ways, nail factory, cooperages, pipe works, biscuit and candy factory, fruit cannery, brick-making plants, quarries, grain elevators, etc., and offers exceptional advantages for industrial development.

Points of Interest and Attractions In and Around Vancouver

Stanley Park

The most beautiful and attractive natural park in the world, 1,000 acres in extent. Seven miles of magnificent panoramic scenery, perfect roadways, the Pacific Ocean in full view continuously. Visit the zoo and the swan and seal ponds. See the buffalo and fawns. Walk through some of the many miles of shady by-paths. See the immense fir and cedar trees. Take tally-ho, automobile or carriage.

English Bay Bathing Beach

The Pacific Coast's finest beach. Bathing, boating and fishing. Music every evening.

Fishing

Visit Lynn, Seymour or Capilano Creeks for near-by fishing. Gorgeous scenery and splendid sport. Take ferry to North Vancouver.

Mountain Climbing

Grouse Mountain Tourist Association Pony Trail from North Vancouver, which is reached by ferry from the city. It is a sublime experience to stand in the rarified atmosphere of the mountains and see the marvellous panorama of ocean, hill and valley spread out on every side.

Pleasure Trips

Pleasure trips are provided both by sea and by land. The B. C. Electric Railway ran a "sight-seeing" car. Four-in-hand tally-ho and magnificent automobile sight-seeing cars make frequent trips around the city and Stanley Park. The city is well supplied with first-class hotels, cafes and boarding-houses. Tourists will be well rewarded by making plans to spend a long holiday at Vancouver's famous resorts. See that your tickets read via Vancouver.

The Fruit Industry of British Columbia

Maxwell Smith, Dominion Fruit Inspector,
Vancouver, B. C.

Although it is only sixteen years since the first full carload of fruit was shipped out of British Columbia, progress has been fairly rapid and people are now beginning to realize something of its possibilities as a fruit-growing province. In the season of 1904, the fruit crop of British Columbia was valued at \$600,000 and the area under cultivation estimated at 14,000 acres.

In 1905 the area under fruit had been increased to 20,000 acres, and the total revenue derived therefrom was nearly \$1,000,000. In the same year something like \$500,000 was expended in the purchase and improvement of fruit lands, and the average price received for grade No. 1 apples from October 1, 1905, to March 31, 1906, was \$1.27 per 40-lb. box, f. o. b. shipping point. The early varieties started out at \$1 net, and during the latter part of February and March as high as \$2 per box was being paid for strictly No. 1 in carload lots. The average prices of other fruits for the season of 1905 were: Pears, \$1.38 per 40-lb. box; prunes and plums, 75c. per 20-lb. box; peaches, \$1.15 per 20-lb. box; strawberries, \$2.30 per 24-basket crate; raspberries \$2.19 per 24-basket crate; blackberries, \$2.40 per 24-basket crate; gooseberries, 5½c. per lb.; crab apples, 2½c. per lb.; tomatoes, 5½c. per lb.; currants, 7c. per lb.; cherries, 9c. per lb.

Outside of the quantities consumed in our own cities the chief market for British Columbia fruit is the prairie provinces; a market which will always demand the best that the fruit-grower can produce and in ever-increasing quantities, so that British Columbia need have no fear, no matter how rapidly the industry develops, of an over-production of good, clean commercial varieties. The province is most favorably situated, in being contiguous to the great plains of the middle west, where fruit-growing on a commercial basis is not likely ever to be a success. That territory is sure to increase rapidly in population and the consumption of fruit will be enormous. It is a curious fact that the average family on the prairies consumes more fruit than do those of British Columbia, and it is quite natural, also, to expect that as the farmers of Alberta, Saskatchewan and Manitoba succeed, within a comparatively few years, in laying by sufficient to keep them in comfort for the rest of their lives, they should look to British Columbia, with its congenial climate, magnificent scenery and tremendous, unexplored and undeveloped natural resources, as a place in which to spend their declining years.



Hotel Accommodations

In the issuance and distribution of this little booklet by the management of the Hotel Irving, it is with the hope that it may be of some assistance to travellers who contemplate a visit to the Northwest.

The Hotel Irving is a new hotel, having been opened about two months, and is thoroughly modern and up-to-date in every respect: electric elevator, hot and cold water and steam heat in every room, suites with baths attached, etc.



BEDROOM SUITES. WITH

No expense has been spared to make this Hotel the most comfortable Hostlery in the West.

Our diningroom is in the hands of a competent Steward, and from the patronage we receive and the good words we hear from our guests we have no hesitation in claiming that it is the best that can be found from Winnipeg to the Coast. A combination of luxuriantly furnished rooms, excellent cuisine, the best of wines, liquors and cigars, quick service, attention and civility in every department, should prove of great advantage to all commercial men visiting our city.

In an advantage of location the Hotel Irving is particularly fortunate, as the greater number of our suites command a magnificent view of the mountains, harbor and city. It is also but a step to shopping centres.

It is our purpose to maintain a high standard of excellence in every department for the care and comfort of our guests, and we ask for an opportunity to entertain you.

A free 'bus meets all trains and boats, and baggage will be handled with promptness and despatch.



ES. WITH BATH. HOTEL IRVING

We would be very glad to have you visit the Hotel at the corner of Columbia Ave. and Hastings St. when you come to the city and see for yourself what accommodation we can offer you.

Any information desired as to rates and accommodations will be furnished upon application to the

HOTEL IRVING

Cor. Columbia Ave. and Hastings St. - Vancouver, B. C.



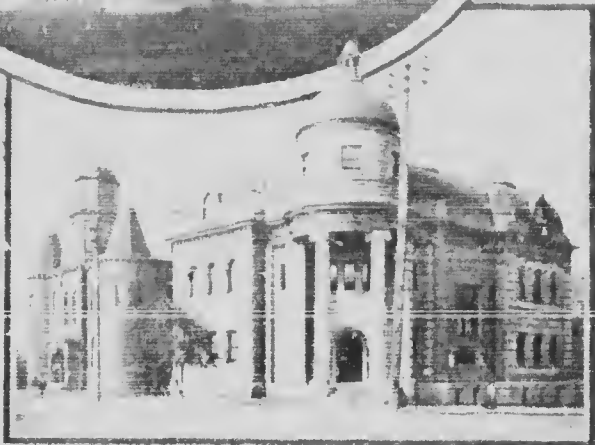
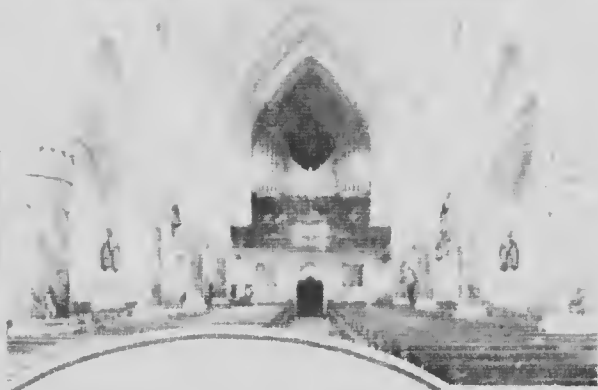


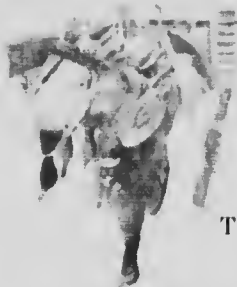
With the courtesy of the Publishers of "The Western Guide."

Synopsis of B. C. Game Laws

Illegal at any time

- To export game birds or animals in their raw state, or any portion or part of same, except bear, martin and land otter and animals killed under license granted to non-residents.
- To kill or take game birds or animals of any kind imported for acclimatization purposes.
- To hunt deer with dogs.
- To kill deer for hides alone.
- To trap, net, snare or take by means of gins, baited lines, drugged bait or other contrivances, any of the birds mentioned in the Act, or to attempt to do so.
- To take, or attempt to take, trout by using any explosive, lime, poison, net seine, drag-net or other device, other than hook and line. (In lakes of 50 square miles or over, nets, seine or drag, are allowed.)
- To use salmon roe as bait for taking trout.
- To buy or sell heads of mountain sheep, elk or wapiti, moose, caribou, or the teeth of wapiti or elk.
- To sell grouse of any kind, prairie chicken or ptarmigan.
- To kill any game birds or animals between one hour after sunset and one hour before sunrise.
- To use for taking wild duck or geese, batteries, swivel guns or sunken punts in non-tidal waters.
- To expose for sale any deer, mountain sheep, goat, elk or wapiti, moose, or caribou without the head on.
- To expose any game bird for sale without its plumage on.
- To sell or expose for sale any game birds or animals during close season.
- To keep game in cold storage at any time.





To trespass or permit dogs to enter on enclosed lands.

To buy, sell, or offer for sale, barter or exchange, any deer of the black-tailed species, alive or dead, or the skin or hide, or any portion thereof, on Vancouver Island and adjacent Islands.

To export from the Province any deer, alive or dead, the hide, or any portion thereof (except under non-resident license).

To kill, take, trap, or attempt to kill or take, beaver, or sell, barter or have in possession untanned pelts of beaver at any time during the period of six years from the 1st of August, 1905.

To take trout under six inches in length.

For non-resident Indians to kill game.

Eggs of birds mentioned in the Act may only be taken on authority of Provincial Secretary.

Farmers may kill deer depasturing in fields.

Act not applicable to Indians or resident farmers in unorganized districts, with regard to deer killed for food only, nor to free miners in unorganized districts, engaged in placer mining or prospecting, nor to surveying or engineering parties engaged in their duties, killing for food only.

In unsettled districts no person, except resident, or licensee, shall trap or kill bear for marketing of pelts.

Unlawful for Indians to kill does or fawns from February 1st to August 1st.

Species of birds, animals, etc., which it is unlawful to shoot or destroy during close seasons shown below (dates inclusive).

(a) Birds living on noxious insects, and pheasant (cock and hen), quail, partridge (English, gray or Hungarian), robin, gull, chaffinch, blackbird (English), thrush, linnet, skylark, swan; at any time.

(a) Beaver (until August 1st), 1911, cow or calf of caribou, moose, elk or wapiti, deer (fawn), mountain sheep (ewe or lamb); at any time.

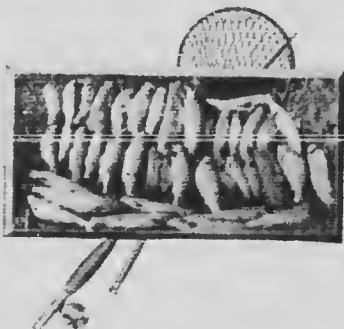
(b) Duck (of all kinds), snipe, heron, plover; 1st March to 31st August.

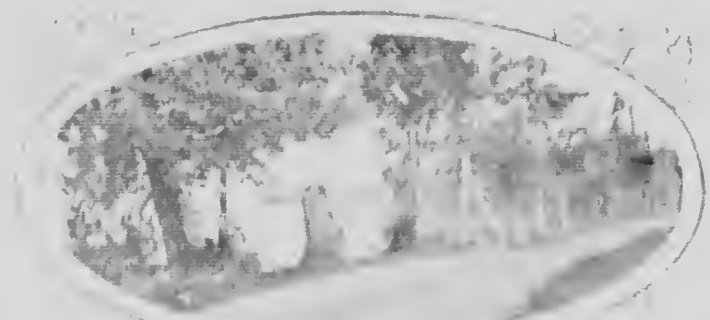
(a) Bittern, meadow lark; 1st March to 31st August.

(a) Grouse (of all kinds), including prairie chicken, ptarmigan; 1st January to 31st August.

Grouse, duck, ptarmigan (north of 55th parallel only); 1st April to 31st August.

(e) Moose (bull), caribou (bull), hare; 1st January to 31st August.







- (m) Elk or wapiti (bull); 1st January to 31st August.
 - (n) Deer (buck); 15th December to 31st August.
 - (o) Robin; farmers only may shoot between June 1st and September 1st.
 - (p) Deer (doe); 15th December to 31st August.
 - (q) Mountain goat, mountain sheep (ram); 15th December to 31st August.
- Land otter, marten; 1st April to 1st November.

Unlawful to buy, sell or expose for sale or advertisement:

- (a) At any time.
- (b) During close season.
- (c) Before October 1st.
- (d) Before September 1st and after November 15th.

NOTE The Lieutenant-Governor-in-Council has power to declare a close season for any animals or birds mentioned in the Game Act in any part of the Province for any period, or remove the prohibition of killing pheasants or quail.

Illegal to kill in one season more than:

5 caribou (bull), 5 deer, 2 elk or wapiti (bull), 2 moose (bull), 5 mountain goat, 3 mountain sheep (ram), 250 duck, 250 snipe.

A close season has been declared by Order-in-Council for the following animals in the districts named:

Mountain sheep All that portion of the Province to the south of the Canadian Pacific Railway from the Coast as far east as the Columbia River, from Revelstoke to the International Boundary.

Moose and wapiti (commonly called elk) In east Kootenay, Rams in Lillooet District; after November 14th.

The following game birds and animals only may be sold:

Duck, snipe, heron and plover, between 1st September and 1st day February; moose (bull), mountain sheep (ram), mountain goat, caribou (bull) and hare, between 1st October and 31st December; deer (buck only), between 1st September and 15th November.



Privileges Accorded Commercial Travellers in B. C.

Week-end return tickets may be purchased between any two stations at single first-class fare on presentation of current certificate of a Commercial Travellers' Association of Canada, good between noon Friday and following Monday, on all C. P. R. lines west of Port Arthur.

On all C. P. R. rail and interior steambont lines in B. C., 3c. per mile, 300 lbs. baggage free.

Esquimalt & Nanaimo Ry., 3½c. per mile, 300 lbs. baggage free. C. P. Ry., B. C. Coast Service, Vancouver-Victoria, \$1.80 one way. Great Northern Ry. equalize above rates to Kootenay points.

Rates of Passage

From Vancouver, Victoria, Seattle, etc.

1st C.—First Class; Int.—Intermediate; Stg.—Steerage

To Yokohama, Japan, 1st C., one way, \$200, round trip four months, \$300; 12 months, \$350. Int., one way, \$100. Stg., \$51.

To Kobe, Japan, 1st C., one way, \$207.50; round trip 4 months, \$312.50; 12 months, \$365. Int., one way, \$214. Stg., \$51.

Nagasaki, Japan, 1st C., one way, \$222.50; round trip 4 months, \$334; 12 months, \$393.75. Int., one way, \$110. Stg., \$51.

Shanghai, Hong Kong, China, Manila, Phill., 1st C., one way, \$225; round trip 4 months, \$337.50; 12 months, \$393.75. Int., one way, \$115. Stg., \$51.

Honolulu, H. I., 1st C., one way, \$75; round trip 4 months, \$135. Int., one way, \$45. Stg., \$25.

Suva, Fiji, Brisbane, Queensland, Sydney, N. S. W., 1st C., one way, \$200; round trip 4 months, \$300; 12 months, \$360. Int., one way, \$100. Stg., \$80.

Children aged 5 to 12, half fare; 2 to 5, quarter fare; under 2 years, free.

Baggage Free Allowance:

First-class, adults, 350 lbs.; intermediate or steerage, 175 lbs.; children, proportionate. Excess, C. P. R., 3 cents per lb.; C. A. S. S., 2s. 6d. (about 60 cents) per cubic foot.

Provincial Timber Officials

R. J. Skinner, Provincial Timber Inspector.

John Murray, Forest Ranger.

A. Haslam, Supervisor of Scales, Vancouver.

J. R. Martin, Asst. Timber Inspector, Nelson.

A. Carney, Asst. Timber Inspector, Kaslo.

CAPT. A. S. FRENCH

AUTOMOBILES ..FOR HIRE..

The Finest Cars in B. C.
Why ride in a cheap car
when you can ride in a
\$10,000 car for the same,
DAY OR NIGHT

TELEPHONE 2334

RALPH, MORRIS & ELLA, LTD.

HARDWARE MERCHANTS

Manufacturers and Dealers in Kitchen Furniture of Every Description; Sole Agents McClary's Ranges, Stoves and Furnaces; Sole Agents Cleveland and Rambler Bicycles

HEATING AND VENTILATING ENGINEERS

SHEET METAL WORKERS

PLUMBERS AND GAS FITTERS

MILL BLOWER SYSTEMS A SPECIALTY

MANUFACTURERS OF HIGH-CLASS BAR
WORK BOARDS

A Man's Chief Asset is His Appearance

There is no disputing this nor the fact that clothes play the most important asset. This being so, it is quite natural that the majority of those men who dress well seek the clothes that bear the Danaher label.

Here they have the most to choose from, for never before in our history have we been able to offer the variety that we do this season.

The styles are the very latest and the values are greater than ever, notwithstanding the advance in prices of almost everything that enters into the making of a garment. This advantage in value-giving is due, of course, to our greatly increased buying capacity.



J. DANAHER & CO.

Corner Granville and Pender Streets

OPPOSITE POST OFFICE

Samples and Self-Measurement Blanks sent on Application



