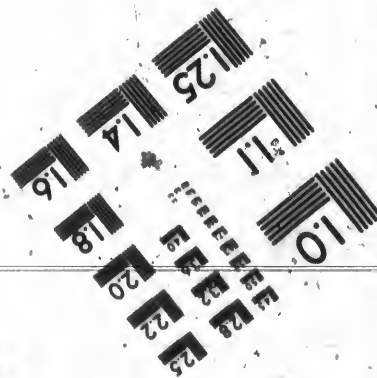
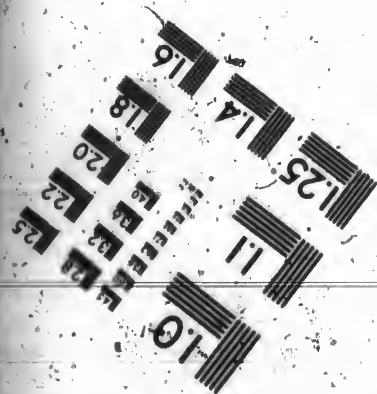
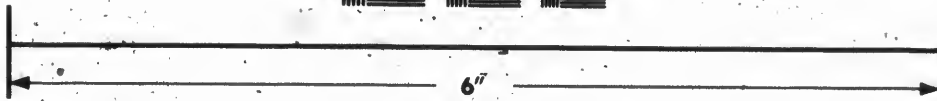
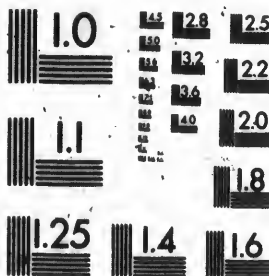


**IMAGE EVALUATION
TEST TARGET (MT-3)**



**Photographic
Sciences
Corporation**

23 WEST MAIN STREET
WEBSTER, N.Y. 14580
(716) 872-4503

**CIHM/ICMH
Microfiche
Series.**

**CIHM/ICMH
Collection de
microfiches.**



Canadian Institute for Historical Microreproductions / Institut canadien de microreproductions historiques

© 1986

Technical and Bibliographic Notes/Notes techniques et bibliographiques

The Institute has attempted to obtain the best original copy available for filming. Features of this copy which may be bibliographically unique, which may alter any of the images in the reproduction, or which may significantly change the usual method of filming, are checked below.

L'Institut a microfilmé le meilleur exemplaire qu'il lui a été possible de se procurer. Les détails de cet exemplaire qui sont peut-être uniques du point de vue bibliographique, qui peuvent modifier une image reproduite, ou qui peuvent exiger une modification dans la méthode normale de filmage sont indiqués ci-dessous.

- | | |
|--|--|
| <input type="checkbox"/> Coloured covers/
Couverture de couleur | <input checked="" type="checkbox"/> Coloured pages/
Pages de couleur |
| <input type="checkbox"/> Covers damaged/
Couverture endommagée | <input type="checkbox"/> Pages damaged/
Pages endommagées |
| <input type="checkbox"/> Covers restored and/or laminated/
Couverture restaurée et/ou pelliculée | <input type="checkbox"/> Pages restored and/or laminated/
Pages restaurées et/ou pelliculées |
| <input type="checkbox"/> Cover title missing/
Le titre de couverture manque | <input checked="" type="checkbox"/> Pages discoloured, stained or foxed/
Pages décolorées, tachetées ou piquées |
| <input type="checkbox"/> Coloured maps/
Cartes géographiques en couleur | <input type="checkbox"/> Pages detached/
Pages détachées |
| <input type="checkbox"/> Coloured ink (i.e. other than blue or black)/
Encre de couleur (i.e. autre que bleue ou noire) | <input type="checkbox"/> Showthrough/
Transparence |
| <input type="checkbox"/> Coloured plates and/or illustrations/
Planches et/ou illustrations en couleur | <input type="checkbox"/> Quality of print varies/
Qualité inégale de l'impression |
| <input checked="" type="checkbox"/> Bound with other material/
Relié avec d'autres documents | <input type="checkbox"/> Includes supplementary material/
Comprend du matériel supplémentaire |
| <input type="checkbox"/> Tight binding may cause shadows or distortion
along interior margin/
La reliure serrée peut causer de l'ombre ou de la
distorsion le long de la marge intérieure | <input type="checkbox"/> Only edition available/
Seule édition disponible |
| <input type="checkbox"/> Blank leaves added during restoration may
appear within the text. Whenever possible, these
have been omitted from filming/
Il se peut que certaines pages blanches ajoutées
lors d'une restauration apparaissent dans le texte,
mais, lorsque cela était possible, ces pages n'ont
pas été filmées. | <input type="checkbox"/> Pages wholly or partially obscured by errata
slips, tissues, etc., have been refilmed to
ensure the best possible image/
Les pages totalement ou partiellement
obscurcies par un feuillet d'errata, une pelure,
etc., ont été filmées à nouveau de façon à
obtenir la meilleure image possible. |
| <input checked="" type="checkbox"/> Additional comments:/ [Printed ephemera] [4] p.
Commentaires supplémentaires: | |

This item is filmed at the reduction ratio checked below/
Ce document est filmé au taux de réduction indiqué ci-dessous.

10X	14X	18X	22X	26X	30X
<input type="checkbox"/>	<input type="checkbox"/>	<input checked="" type="checkbox"/>	<input type="checkbox"/>	<input type="checkbox"/>	<input type="checkbox"/>
12X	16X	20X	24X	28X	32X

The copy filmed here has been reproduced thanks to the generosity of:

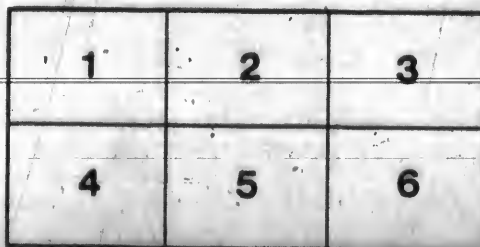
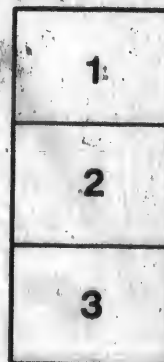
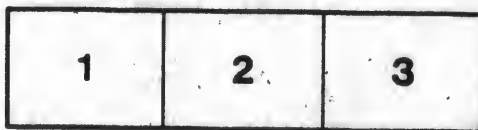
D. B. Weldon Library
University of Western Ontario
(Regional History Room)

The images appearing here are the best quality possible considering the condition and legibility of the original copy and in keeping with the filming contract specifications.

Original copies in printed paper covers are filmed beginning with the front cover and ending on the last page with a printed or illustrated impression, or the back cover when appropriate. All other original copies are filmed beginning on the first page with a printed or illustrated impression, and ending on the last page with a printed or illustrated impression.

The last recorded frame on each microfiche shall contain the symbol \rightarrow (meaning "CONTINUED"), or the symbol ∇ (meaning "END"), whichever applies.

Maps, plates, charts, etc., may be filmed at different reduction ratios. Those too large to be entirely included in one exposure are filmed beginning in the upper left hand corner, left to right and top to bottom, as many frames as required. The following diagrams illustrate the method:



L'exemplaire filmé fut reproduit grâce à la générosité de:

D. B. Weldon Library
University of Western Ontario
(Regional History Room)

Les images suivantes ont été reproduites avec le plus grand soin, compte tenu de la condition et de la netteté de l'exemplaire filmé, et en conformité avec les conditions du contrat de filmage.

Les exemplaires originaux dont la couverture en papier est imprimée sont filmés en commençant par le premier plat et en terminant soit par la dernière page qui comporte une empreinte d'impression ou d'illustration, soit par le second plat, selon le cas. Tous les autres exemplaires originaux sont filmés en commençant par la première page qui comporte une empreinte d'impression ou d'illustration et en terminant par la dernière page qui comporte une telle empreinte.

Un des symboles suivants apparaîtra sur la dernière image de chaque microfiche, selon le cas: le symbole \rightarrow signifie "A SUIVRE", le symbole ∇ signifie "FIN".

Les cartes, planches, tableaux, etc., peuvent être filmés à des taux de réduction différents. Lorsque le document est trop grand pour être reproduit en un seul cliché, il est filmé à partir de l'angle supérieur gauche, de gauche à droite, et de haut en bas, en prenant le nombre d'images nécessaire. Les diagrammes suivants illustrent la méthode.

errata
to

pelure.
on à

32X

7



The Baconian Club

LONDON, CANADA.



Sixth Annual Dinner

AT
"THE GRIGG"

Friday, 9th May, 1890.

505-Copyright by Robinson & Eng Co London
"Shall I not take mine ease in mine inn?"—Falstaff.

"Let me play the fool!
 With mirth and laughter let old wrinkles come,
 And let my liver rather heat with wine
 Than my heart cool with mortifying grāms."—Shak.

MENU

SOUP

Mock Turtle

FISH

Boiled Haddock, Lobster Sauce Baked White, Tomato Sauce

BOILED

Turkey, Celery Sauce Sugar-cured Ham Ox Tongue

ROASTS

Ribs of Beef, Yorkshire Pudding
 Spring Lamb, Mint Sauce
 Spring Chicken, Brown Gravy

SALADS

Chicken and Potato

ENTREES

Fricasseed Sweetbreads, Port Wine Sauce
 Banana Fritters, Rum Sauce Timbale Macaroni

VEGETABLES

Mashed and Boiled Potatoes Asparagus on Toast Spinach
 French Peas

PUDDINGS AND PASTRY

Delmonica Pudding, Cream Sauce English Plum Pudding, Brandy Sauce
 Apple Pie Lemon Pie Cherry Tart

DESSERT

Bananas Oranges Apples Pineapple Port Wine Jelly
 Charlotte Russe Lady Fingers White Cake Pyramid Macarōons
 Vanilla Ice Cream Rochford Cheese

JAVA COFFEE

GREEN AND BLACK TEA

"But that the fear of something after" — Hamlet.

"The browne bowle, the merrie browne
bowle,
As it goes round about—a!
Fill—
Still—
Let the world say what it will,
And drink your fill all out—a!"

"The deep canne, the merrie deep canne,
As thou dost freely quaff—a!
Sing—
Fling—
Be as merrie as a kinge,
And sound a lusty laugh—a!"
—Old Song.

TOASTS

"Here's that which is too weak to be a
sinner:
Honest water."
—*Timon of Athens.*

"Come thou monarch of the vine,
Plumpy Bacchus with pink eye,
In thy fats our cares be drowned!
With thy grapes our cares be crowned!
Cup us, till the world go round!
Cup us, till the (hic) world g'round!"
—*Ant. and Cleo.*

"The Queen."

"The Queen, and who'll do her right now?
The Queen, and who's ripe for a fight now?
Give a rouse! here's, in Hell's respite now,
The Queen!"
(Adapted from Browning.)

"The Baconian Club."

(R. A. LITTLE)

"A Canadian Sentiment."

"Who hateth thee that I do call my friend?
On whom frown'st thou, that I do fawn upon?"—*Shak.*
(G. N. WREKES. W. G. OWENS.)

"Lord Bacon."

"We see him as he moved,
How modest, kindly, all-accomplished, wise."—*Bacon alias Shak.*
(M. F. LIBBY.)

"The Learned Professions."

"Perhaps some parson of tremendous paunch,
Awful and deep, a black abyss of drink,
Outlives them all, and from his buried flock
Retiring, full of rumination sad,
Laments the weakness of these latter times."
—*Thompson's Seasons.*

"Happy a suburban physician! His faults are less observed, and his
assassinations less known."—*Gil Blas*

Ham.: "Is not parchment made of sheep skins?"
Hor.: "Ay, my lord, and of calf skins, too."—*Shak.*

(REV. A. C. COURTYCE. DR. O. WELD. C. G. JARVIS.)

"Our Commerce."

"See'st thou a man dilligent in business, he shall stand before kings"—*Proverbs.*
(JOHN DEARNESS. JOHN STEVENSON.)

"Higher Education."

"Mens sana in corpore sano."
(HON. D. MILLS. N. W. ROWELL.)

"The Ladies."

"The morning star of childhood,
The day star of manhood,
The evening star of age,
Bless our stars!"

(A. D. SCATCHERD. GEO. D. GRANT. G. C. GUNN.)



Officers:

President—R. A. LITTLE. Vice-President—J. P. MOORE

Sec.-Treas.—W. G. OWENS.

EXECUTIVE COMMITTEE:

N. W. ROWELL.

M. F. LIBBY.

R. M. GRAHAM.



Olla-Podrida:

"Amidst the diversity of things herein contained, I may surely light upon something both wholesome and toothsome."—*Sancho Panza*

RECITALS:

EDMUND WELLS.

R. A. LITTLE.

A. D. HARDY.

SONGS:

A. D. HARDY.

C. T. GLASS.

R. A. GR.



"All hell broke loose!"

—*Milton.*

Peace, come away.

—*In Memoriam.*

"Tis now the very witching time of night."

—*Shak.*

"No will-o-the-wisp mislight thee,
Nor *snake* nor slow-worm bite thee,

But on, on thy way,

Not making a stay,

Since ghost—there is none to affright thee!"

—*Old Song.*

