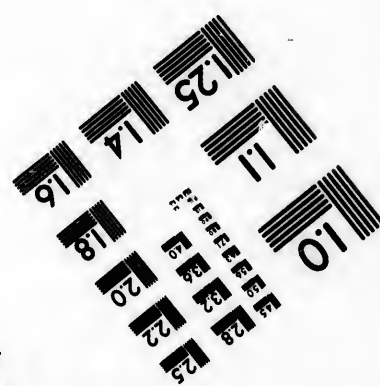
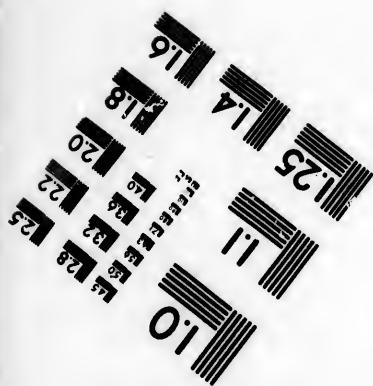
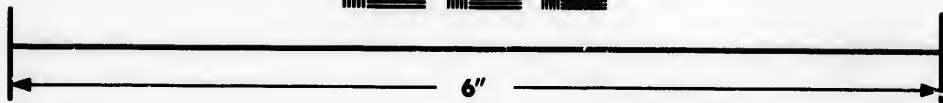
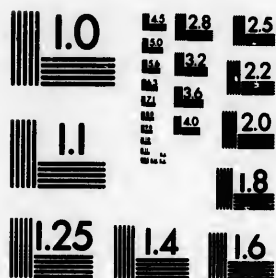


**IMAGE EVALUATION
TEST TARGET (MT-3)**



**Photographic
Sciences
Corporation**

23 WEST MAIN STREET
WEBSTER, N.Y. 14580
(716) 872-4503

**CIHM/ICMH
Microfiche
Series.**

**CIHM/ICMH
Collection de
microfiches.**



Canadian Institute for Historical Microreproductions / Institut canadien de microreproductions historiques

© 1986

Technical and Bibliographic Notes/Notes techniques et bibliographiques

The Institute has attempted to obtain the best original copy available for filming. Features of this copy which may be bibliographically unique, which may alter any of the images in the reproduction, or which may significantly change the usual method of filming, are checked below.

L'Institut a microfilmé le meilleur exemplaire qu'il lui a été possible de se procurer. Les détails de cet exemplaire qui sont peut-être uniques du point de vue bibliographique, qui peuvent modifier une image reproduite, ou qui peuvent exiger une modification dans la méthode normale de filmage sont indiqués ci-dessous.

- Coloured covers/
Couverture de couleur
- Covers damaged/
Couverture endommagée
- Covers restored and/or laminated/
Couverture restaurée et/ou pelliculée
- Cover title missing/
Le titre de couverture manque
- Coloured maps/
Cartes géographiques en couleur
- Coloured ink (i.e. other than blue or black)/
Encre de couleur (i.e. autre que bleue ou noire)
- Coloured plates and/or illustrations/
Planches et/ou illustrations en couleur
- Bound with other material/
Relié avec d'autres documents
- Tight binding may cause shadows or distortion
along interior margin/
La reliure serrée peut causer de l'ombre ou de la
distorsion le long de la marge intérieure
- Blank leaves added during restoration may
appear within the text. Whenever possible, these
have been omitted from filming/
Il se peut que certaines pages blanches ajoutées
lors d'une restauration apparaissent dans le texte,
mais, lorsque cela était possible, ces pages n'ont
pas été filmées.
- Additional comments:/
Commentaires supplémentaires:

- Coloured pages/
Pages de couleur
- Pages damaged/
Pages endommagées
- Pages restored and/or laminated/
Pages restaurées et/ou pelliculées
- Pages discoloured, stained or foxed/
Pages décolorées, tachetées ou piquées
- Pages detached/
Pages détachées
- Showthrough/
Transparence
- Quality of print varies/
Qualité inégale de l'impression
- Includes supplementary material/
Comprend du matériel supplémentaire
- Only edition available/
Seule édition disponible
- Pages wholly or partially obscured by errata
slips, tissues, etc., have been refilmed to
ensure the best possible image/
Les pages totalement ou partiellement
obscurcies par un feuillet d'errata, une pelure,
etc., ont été filmées à nouveau de façon à
obtenir la meilleure image possible.

This item is filmed at the reduction ratio checked below/
Ce document est filmé au taux de réduction indiqué ci-dessous.

10X	14X	18X	22X	26X	30X
<input type="checkbox"/>	<input type="checkbox"/>	<input type="checkbox"/>	<input checked="" type="checkbox"/>	<input type="checkbox"/>	<input type="checkbox"/>
12X	16X	20X	24X	28X	32X

The copy filmed here has been reproduced thanks to the generosity of:

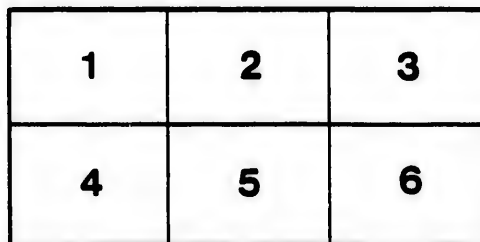
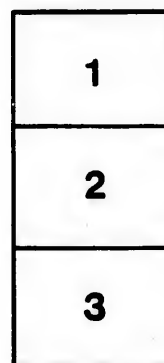
D. B. Weldon Library
University of Western Ontario
(Regional History Room)

The images appearing here are the best quality possible considering the condition and legibility of the original copy and in keeping with the filming contract specifications.

Original copies in printed paper covers are filmed beginning with the front cover and ending on the last page with a printed or illustrated impression, or the back cover when appropriate. All other original copies are filmed beginning on the first page with a printed or illustrated impression, and ending on the last page with a printed or illustrated impression.

The last recorded frame on each microfiche shall contain the symbol \rightarrow (meaning "CONTINUED"), or the symbol ∇ (meaning "END"), whichever applies.

Maps, plates, charts, etc., may be filmed at different reduction ratios. Those too large to be entirely included in one exposure are filmed beginning in the upper left hand corner, left to right and top to bottom, as many frames as required. The following diagrams illustrate the method:



L'exemplaire filmé fut reproduit grâce à la générosité de:

D. B. Weldon Library
University of Western Ontario
(Regional History Room)

Les images suivantes ont été reproduites avec le plus grand soin, compte tenu de la condition et de la netteté de l'exemplaire filmé, et en conformité avec les conditions du contrat de filmage.

Les exemplaires originaux dont la couverture en papier est imprimée sont filmés en commençant par le premier plat et en terminant soit par la dernière page qui comporte une empreinte d'impression ou d'illustration, soit par le second plat, selon le cas. Tous les autres exemplaires originaux sont filmés en commençant par la première page qui comporte une empreinte d'impression ou d'illustration et en terminant par la dernière page qui comporte une telle empreinte.

Un des symboles suivants apparaîtra sur la dernière image de chaque microfiche, selon le cas: le symbole \rightarrow signifie "A SUIVRE", le symbole ∇ signifie "FIN".

Les cartes, planches, tableaux, etc., peuvent être filmés à des taux de réduction différents. Lorsque le document est trop grand pour être reproduit en un seul cliché, il est filmé à partir de l'angle supérieur gauche, de gauche à droite, et de haut en bas, en prenant le nombre d'images nécessaire. Les diagrammes suivants illustrent la méthode.

rrata
to

pelure,
n à

COUNTY OF LAMARCA
FOR THE YEAR

1899

BY THE COMMISSIONER

The following is a list of the names of the persons who have been elected to the office of Justice of the Peace for the County of Laramie for the year 1899. The names are given in the order in which they were elected. The names of the persons who have been elected to the office of Justice of the Peace for the County of Laramie for the year 1899 are: [illegible names]

BARNIA, ONTARIO

PRINTED AT THE OBSERVER BOOK AND JOB PRINTING HOUSE,

1899.



VOTERS' LIST, 1899.

TOWNSHIP OF MOORE

Polling Sub-division No. 1.

SCHEDULE OF POST OFFICES—1, Bickford; 2, Brigden; 3, Bradshaw; 4, Courtright; 5, Corunna; 6, Collinville; 7, Kimball; 8, Logierait; 9, Lucasville; 10, Mooretown; 11, Osborne; 12, Ossian; 13, Petrolea; 14, Sarnia; 15, Seckerton; 16, Sykeston; 17, Waubuno.

POLLING SUB-DIVISION NO. 1.—Comprising lots 1 to 18 inclusive in Front Concession, and lots 20 to 29 inclusive in the 1st, 2nd and 3rd Concessions. Polling place, Jenkins' School House

PART NO. 1.—Persons entitled to Vote at both Municipal Elections and Elections to the Legislative Assembly.

No. ON ROLL	Jurat	NAME AND OCCUPATION.	LOT, CONCESSION OR STREET.	Tenant, Owner M. F.	P. O. Addr.
192	J	Allingham John A, farmer	w hf 26, 3	M F, O	4
196		Barberry Irwin, laborer	s pt gore 29, 3	M F, O	4
1044	J	Bedard Wm sr, farmer	n hf 18, s hf 19, Front	M F, O	4
1228		Bell John, lumberman	w pt s hf 8, Front	M F, T	4
116	J	Burns Frank, farmer	e hf 24, 2	M F, T	4
1009		Campbell John, farmer	w hf 1 and 2, Front	M F, Jt T	1
1010		Campbell Donald, farmer	w hf 1 and 2, Front	M F, Jt T	1
178	J	Clark Thomas, farmer	w qr 22, 3	M F, O	4
114	J	Chowan John, farmer	e hf w hf 22, 2	M F, O	4
123	J	Chowan Thomas, farmer	w hf e hf 20, 2	M F, O	4
115	J	Chowan Henry, farmer	w pt 22, 2	M F, T	4
189	J	Chowan Samuel, farmer	e hf 23, 3	M F, O	4
124	J	Chowan Edward, farmer	e pt 26, 2	M F, O	4
187		Champlain Dennis, farmer	w pt 22, 2	M F, Jt O	Wallaceburg
193	J	Cockerlin Charles, farmer	e qr 28, 3	M F, O	4
110	J	Connors Daniel, farmer	e qr 20, 2	M F, O	4
180	J	Connors John, farmer	e hf 21, 3	M F, Jt O	4

TOWNSHIP OF MOORE.

No. on Roll.	Juror.	NAME AND OCCUPATION.	LOT, CONGRESSION OR STREET.	ber ant M. F.	P. O. Add'n
179	J	Connors Alexander, farmer	e hf 21, 3	M F, Jt O	4
184	J	Coyle James M, farmer	s e pt 22, 2	M F, Jt O	4
186		Coyle James, R R man	w pt 22, 2	M F, O Wallaceburg	
182	J	Coyle Charles J, farmer	w hf 21, 3	M F, Jt O	4
183	J	Coyle Charles jr, farmer	w hf 21, 3	M F, Jt O	4
185	J	Coyle John P, R R man	w hf 22, 2	M F, Jt O Wallaceburg	
1042	J	Denomy George, farmer	n hf 18, s hf 19, Front	M F Tenant	4
1011		Everett Adam T, farmer	3, Front	M F, Jt O	4
1012	J	Everett Francis E, farmer	3, Front	M F, Jt O	4
1026	J	Ferris J D, farmer	11, Front	M F, Jt T	4
1038		German William, farmer	16, 17, Front	M F, T	4
1039	J	German Joseph, farmer	16, 17, Front	M F, T	4
117	J	James William, farmer	e hf w hf 24, 2	M F, Jt O	4
1031		Jenkins Alexander, farmer	13, Front	M F, Jt O	4
1032	J	Jenkins William, farmer	13 s hf 22, Front	M F, Jt O	4
64	J	Johnston Alfred D, farmer	27, 1	M F, Jt O	4
65	J	Johnston, Fred K, farmer	27, 1	M F, Jt O	4
121	J	Johnston David M, farmer	w hf 25, 2	M F, Jt O	4
1016		Leslie George, farmer	6, Front	M F, O	4
116	J	Long George, farmer	e pt 23, 2	M F, O	4
117	J	Long Luke, farmer	w pt 22, 2	M F, O	4
57	J	Lumley Thomas W, farmer	e hf 25, 1	M F, Jt O	1
58	J	Lumley John F, farmer	e hf 25, 1	M F, Jt O	1
60		Lumley William, farmer	w hf 25, 1	M F, Jt O	1
61	J	Lumley William J, farmer	w hf 25, 1	M F, Jt O	1
55	J	Lumley Charles, farmer	e pt 20, 1	M F, T	1
1033	J	Milligan Benjamin, farmer	s hf 14, Front	M F, O	4
132		Milligan John, farmer	w hf 28, 2	M F, Jt O	4
133	J	Milligan William, farmer	w hf 28, 2	M F, Jt O	4
128	J	Moar John, farmer	w qr 26, 2	M F, Jt O	4
127	J	Moar Thomas, farmer	w qr 26, 2	M F, Jt O	4
1007	J	Moran Patrick, farmer	e pt 1 and 2, Front	M F, O	1
1601	J	Moran John, farmer	e qr 26, 1	M F, O	1
190	J	Munday Mark, farmer	24, 3	M F, O	4
1018	J	McBeth James E, farmer	s hf 8, Front	M F, Tenant	4
1022	J	McBeth David, farmer	n hf 8, Front	M F, T	4
1023	J	McBride William, farmer	s hf 7, Front	M F, T	4
191	J	McPherson Alexander, farmer	s hf 27, 3	M F, O	4
128	J	McRae Murdock, farmer	e pt 27, 2	M F, O	4
129	J	McRae Duncan, farmer	con 27, 2	M F, O	4
131	J	McRae John, farmer	e hf 28, 2	M F, T	4
1025	J	Neal John R, farmer	10, Front	M F, O	4
1034	J	Neal William D, sailor	n hf 14, Front	M F, O	4

TOWNSHIP OF MOORE.

No. ON ROLL	Juror	NAME AND OCCUPATION.	LOT, CONCESSION OR STREET.	Owner Tenant M. F.	P. O. Address
125	J	Neal Samuel, farmer	oon 23, 2	M F, O	4
1035	J	Neal Thomas, farmer	s hf 15, Front	M F, O	4
62	J	Rankin Arthur, farmer	w hf 26, 1	M F, O	1
1017		Reynolds Martin, farmer	s hf 7, Front	M F, T	4
188	J	Robillard Joseph, farmer	e hf 22, 3	M F, O	4
1024	J	Ross Oakley, farmer	9, Front	M F, O	4
119	J	Rumbold Charles, farmer	e pt 25, 2	M F, O	4
1014	J	Selby Arthur, farmer	5, Front	M F, T	4
1020	J	Selby W F, farmer	n hf 7, Front	M F, O	4
118	J	Smith James, farmer	w qr 24, 2	M F, O	4
1040		Stewart George, farmer	s hf 18, Front	M F, O	4
1015		Stockdale Robert, farmer	5, Front	M F, O	4
1030		Stockdale George, farmer	12, Front	M F, O	4
1037	J	Stockdale John, farmer	n hf 15, Front	M F, O	4
1008	J	Stratton Wallace, farmer	w'pt e hf 1 and 2, Front	M F, O	1
112	J	Taylor George A, farmer	w pt 21, 2	M F, Jt O	4
194		Trapp John, farmer	w hf e hf 28, 3	M F, Jt T	4
195	J	Trapp Robert, farmer	w hf e hf 28, 3	M F, Jt T	4
130	J	Wiley William, farmer	n w pt 27, 2	M F, O	4
1027	J	Winder Edward, hotel keeper	11, Front	M F, Jt T	10
111	J	Winters David, farmer	w hf 20, 2	M F, O	4

PART NO. II.—Persons entitled to Vote at Municipal Elections only.

181		Connor Ann, widow	e hf 21, 3	Jt O	4
117		Geen William	e hf 24, 2	O St Thomas	
56		Kerr James, oil proprietor	20 to 24, 1	O	14
1019		Kittermaster F W, barrister	e hf 7, Front	O	14
1029		McBeth Mrs James, widow	e hf 8, Front	O Detroit	
197		McMaster Mrs James, widow	e hf 20, 3	O	
113		Taylor Annie, spinster	w pt 21, 2	Jt O	4
1021		Whay Ellen, widow	s hf 4, Front	Jt O Forest	

PART NO. III.—Persons entitled to Vote at Elections to the Legislative Assembly only.

1036		Campbell James, farmer	s hf 15, Front	M F	4
59		Lumley Richard, laborer	e hf 25, 1	M F	1

Polling Sub-division No. 2.

POLLING SUB-DIVISION NO. 2.—Comprising lots 19 to 30 inclusive on Front Concession, and lots 19 to 29 inclusive on the 4th and 5th Concessions and village of Courtright. Polling place, Stewart's Hall, Courtright.

PART NO. 1.—Persons entitled to Vote at both Municipal Elections and Elections to the Legislative Assembly.

No. ON ROLL	Juror.	NAME AND OCCUPATION.	LOT, CONCESSION OR STREET.	Owner Tenant M. F.	P. O. Add'n.
1077	J	Aitken William, blacksmith	5, 21 Cath sy	M F, O	4
1086		Aitkin Andrew, carpenter	23, 25 Cath sy	M F, O	4
1129		Barnes Lafayette, sailor	65 McDougal's sy	M F, T	4
425	J	Baxter Robert, farmer	e hf 26, 5	M F, O	4
1045	J	Bedard William jr, farmer	n hf 19, 5	M F, Jt O	4
1046	J	Bedard Peter, farmer	s hf 20, 5	M F, Jt O	4
1043	J	Bedard William sr, farmer	s hf 20, 5	M F, Jt O	4
1095	J	Bedard Thomas, merchant	s hf 7 McD's sy	M F, Jt O	4
1092	J	Bedard Alex'r, hotel keeper	1, 2, 6, 8 Cath sy	M F, O	4
1094	J	Bedard Edward, merchant	7 McD's sy	M F, T	4
1121		Ben'ly Anderson, merchant	53 McD's sy	M F, O	4
345	J	Bertrand C A, Ins agent	e hf w hf 27, 5	M F, O	4
1089		Bogle Andrew, sailor	31 Cath sy	M F, Jt O	4
1013	J	Bowen William H, farmer	n hf 4, Front	M F, O	1
344	J	Brown Robert B, farmer	w hf 28, 5	M F, O	4
279	J	Brown Elisha, farmer	w hf 29, 4	M F, T	4
1151		Bradt J T, section foreman	26 n Gurd's sy	T M F	4
1059		Bryan Spier, laborer	e pt 24, Front	T M F	4
1080		Bryan John, laborer	e pt 24, Front	T M F	4
1181	J	Barton Thomas, Carpenter	n pt 28, Front	M F, O	4
265	J	Carr James, farmer	w qr 25, 4	M F, Jt O	4
266	J	Carr John, farmer	w qr 25, 4	M F, Jt O	4
341	J	Carr John, farmer	s 2 e hf 25, 4	M F, Jt O	4
489	J	Cassin Lawrence, farmer	n qr 19, 5	M F, O	4
330	J	Cassin Michael, farmer	s hf n hf 19, 5	M F, O	4
1054	J	Carter Thos H, farmer	w pt 24, Front	M F, O	4
1072	J	Cathcart Wm A, merchant	3, 4 Cath sy	M F, O	4
1166		Chambers David, laborer	51 Gurd's sy	M F, O	4
1176	J	Charlton W W, farmer	s pt 28, Front	M F, O	4
1110	J	Clinkman John, wagon maker	31, 32, 33 McD's sy	M F, O	4
1111	J	Clinkman Fred'k, blacksmith	5 n, 7 n Gurd's sy	M F, O	4
1050		Clinkman James, blacksmith	20, 21, 22, 23 n Gurd's sy	M F, O	4
348		Courtney Angus, farmer	Con 29, 5	M F, O	4
347	J	Coyle James J, farmer	w hf 28, 5	M F, O	4
1073		Dale Robert, gentleman	39, 41, 43, 45 Cath sy	M F, T	4
1178		Dale George S, farmer	s pt 28, Front	M F, O	4

TOWNSHIP OF MOORE.

No. ON ROLL	Juror.	NAME AND OCCUPATION.	LOT, CONCESSION OR STREET.	Owner Tenant M. F.	P. O. Address
1096		Kerby Alexander, gentleman	33, 35, 47, 49, 51 Cath sy	M F, Jt O	4
1136	J	Kerby A A, merchant	14 Gurd's sy	M F, O	4
1137	J	Kerby Nelson, merchant	59, e hf 60 McD's sy	M F, O	4
1047	J	Kenny William, farmer	20, Front	M F, T	4
1137	J	Kerr James, baker	4 n, 8 n Gurd's sy	M F, T	4
1105		Kindall James, drayman	18, 19, 20 McD's sy	M F, T	4
1185	J	Kittermaster James, farmer	30, Front	M F, O	4
1142		Lario George, gentleman	12 n, 15 n Gurd's sy	M F, Jt T	4
1143		Lario Lewis	12 n, 15 n Gurd's sy	M F, Jt T	4
1114		Leclair Charles, carpenter	e McD's sy	M F, O	4
1115		Long Edmond, gentleman	W Y A L A 3 McD's sy	M F, O	4
1171	J	Lott John M, customs	61 n Gurd's sy	M F, T	4
1172		Lott Walter, laborer	61 n Gurd's sy	M F, Jt O	4
261	J	Martin George, farmer	w hf e hf 24, 4	M F, O	4
1121	J	Morris Patrick, watchman	33 McD's sy	M F, T	4
1078		Mayhew Alexander, laborer	9 Cath sy	M F, O	4
1053		Morrison Alexander, laborer	s w cor n hf 24, Front	M F, T	4
1153		McArthur Alex'r, laborer	27 Gurd's sy	M F, T	4
1159		McArthur D J, laborer	34 n, 35 n Gurd's sy	M F, O	4
342	J	McDonald John, farmer	e 1/2 e hf 25, 5	M F, Jt O	4
270	J	McDonald Alex, farmer	w hf 27, 4	M F, Jt O	4
271	J	McDonald Robert, farmer	w hf 27, 4	M F, Jt O	4
1104		McGregor James, gentleman	17 McD's sy	M F, O Ypsilanti	
273	J	McLaughlin Edwin, farmer	e hf w hf 28, 4	M F, O	4
1049		Nathen Daniel, sailor	18, 19 n Gurd's sy	M F, O	4
1051	J	Neal Alvin, farmer	n w cor 23, Front	M F, O	4
169		Penhall William, clergyman	59 n Gurd's sy	M F, T	4
1120	J	Perry Nelson, butcher	51, 52 McD's sy	M F, O	4
334	J	Phillips James E, farmer	e hf 23, 5	M F, O	4
335	J	Phillips Louther M, farmer	w hf 23, 5	M F, O	4
336	J	Phillips John, farmer	pt e hf 22, 5	M F, O	4
1139	J	Plewes Charles, miller	1, 2 Gurd's sy	M F, T	4
1158	J	Price William, laborer	33 n Gurd's sy	M F, O	4
1113		Quinn Henry, laborer	C McD's sy	M F, T	4
1124	J	Randaw Frank, carpenter	57 McD's sy	M F, Jt O	4
1125	J	Randaw Edward, carpenter	57 McD's sy	M F, Jt O	4
251	J	Roberts Martin, farmer	e hf 20, 4	M F, O	4
252	J	Roberts James, farmer	w hf 20, 4	M F, O	4
272	J	Roberts Lee, farmer	e hf 28, 4	M F, O	4
1146		Scobbie John, miller	6 n Gurd's sy	T M F	4
1100		Scott Wallace, physician	12, w pt 13 McD's sy	M F, O	4
1094		Selby John P, farmer	17 Cath sy	M F, O	4
1107		Shepherd Henry, laborer	26, 27 McD's sy	M F, O	4

TOWNSHIP OF MOORE.

No. ON ROLL	Juror	NAME AND OCCUPATION.	LOT, CONCESSION OR STREET.	Tenant, Owner M. F.	P. O. Addr.
106		Shepherd Alex, laborer	26, 27 McD's sy	M F, Jt O	4
1052		Simpson Thomas, peddler	s w cor 24, Front	M F, T	4
1048	J	Smith Frank, farmer	n hf 20, Front	M F, O	4
170		Smith Robert, carpenter	59 n Gurd's sy	M F, T	4
488	J	Solomon Alfred D, farmer	n qr 19, 5	M F, T	7
167	J	Stewart R G, merchant	52 n, 53 n Gurd's sy	M F, O	4
175	J	Stevens David, farmer	n hf 27, Front	M F, O	4
1075		Stubbs Alfred, laborer	3 and 4 Cath sy	M F, T	4
404	J	Trapp Hugh H, farmer	n hf 20, 5	M F, O	10
258	J	Toner Francis, farmer	e hf 23, 4	M F, T	4
1123	J	Trueman John, engineer	55, 56 McD's sy	M F, O	4
1065	J	Wanless J W, station agent	5, 14 Evens sy	M F, T	4
1071	J	Webb Joseph, mason	17, 18 Evens sy	M F, O	4
267	J	Weaver William, farmer	w hf 26, 4	M F, O	4
264		Wheeler Abalom, farmer	e hf w hf 26, 4	M F, O	4
259	J	Wheeler Elijah, farmer	w hf 23, 4	M F, O	4
348	J	Wheeler George, farmer	w hf 25, 5	M F, O	4
1082		White John, barber	11 Cath sy	M F, T	4
274	J	Whitsett James T, farmer	e hf 29, 4	M F, Jt O	4
275	J	Whitsett Benjamin, farmer	n qr 26, 4	M F, Jt O	4
233	J	Whitsett William G, farmer	w hf 21, 4	M F, O	4

PART NO. II.—Persons entitled to vote at Municipal Elections only.

1154		Anderson Mary, widow	27 n Gurd's sy	O	4
1066		Bartlett William, gentleman	5, 14, 4, 15 Evens sy	O Windsor	
1144		Bennett Hannah, widow	12, 13 Gurd's sy	O	4
1088		Bogle Jane, widow	31 Cath sy	Jt O	4
1145		Boylan Eliza, widow	15 n Gurd's sy	O	4
1063		Bunn Sarah, widow	3 n Gurd's sy	O	4
1117		Cleary Eliza, widow	A 2 McD's sy	O	4
1116		Colter Eliza, widow	4 Z, A 4, A 6 McD's sy	O	4
1140		Cook John J, lumberman	1, 2 Gurd's sy	Jt O Toronto	
1141		Cook George, lumberman	1, 2 Gurd's sy	Jt O Toronto	
1256		Coyle Isabella, spinster	22, 4	Jt Q Detroit	
257		Coyle Martha, spinster	22, 4	Jt O Detroit	
1128		Cronkite Alice, widow	w hf 60, 61 McD's sy	O	4
1101		Cunningham Mary, spinster	e hf 13, 14 McD's sy	O	4
1126		Frederick Barbara, widow	58 McD's sy	O	4
1179		Gallerneau Rosina, widow	w pt cen pt 28, Front	O	4
1186		Gurd A T, oil operator	pt s hf 24, Front	O	13
1131		Hyde Florence, widow	65, 66, 67 McD's sy	Jt O	4
1064		Johnston Hannah, spinster	3 n Gurd's sy	T	4
1598		King James, merchant	Front pt 24, Front	O	14
1097		Kirby Minnie, spinster	29 Cath sy	O	4
1183		Little Annie, spinster	s pt 29, Front	Jt O	4
1184		Little Kate, spinster	s pt 29, Front	Jt O	4

TOWNSHIP OF MOORE.

No. ON ROLL	Juror	NAME AND OCCUPATION.	LOT, CONGRESSION OR STREET.	Owner Tenant M. F.	P. O. Address
260		McDonald Jane, widow	w hf 27, 4	Jt O	4
1136		McIntyre Jessie, widow	6 Gurd's ay	O	4
1163		McKenzie David, barrister	42 n, 46 n, 47 n Gurd's ay	O	14
1164		McKinnon Margaret, widow	45 n, 43 n, 44 n Gurd's ay	O	4
1152		McRae Mary, spinster	26 Gurd's ay	O	4
1168		Neal Harriett, spinster	54, 55, 56 Gurd's ay	O	4
337		Phillips Julia, spinster	e hf 22, 5	Jt O	4
338		Phillips Elizabeth, widow	s w pt 21, 5	Jt O	4
339		Phillips Sarah, spinster	cen pt 25, Front	Jt O	4
1083		Prest Matilda, widow	13, 15 Cath ay	O	4
1162		Stevens Mrs C W, widow	57 n Gurd's ay	O	Detroit
1041		Stewart Mary, spinster	39, 40, 57, 58 Evens ay	O	4
257		Toner Margaret, widow	e hf 23, 4	O	4
1160		Wells Hannah, widow	50 n Gurd's ay	O	4
2276		Whitsett Annie, widow	w pt 29, 5	Jt O	4
277		Whitsett Lucinda, spinster	w pt 29, 5	Jt O	4
278		Whitsett Augusta, spinster	e hf 29, 4	Jt O	4

PART NO. 3.—Persons entitled to Vote at Elections to the Legislative Assembly only.

1093		Bryan Charles, bar tender Hotel Bedard	Courtright	M F	4
350		Fobiar Joseph, laborer	w pt 2, 5	M F	4
1180		Gallarneau Ferdine, ferryman	w pt 5, Front	M F	4
1119		Pease Chester, laborer	McD's ay, Courtright	M F	4
1091		Quinn Thomas, laborer	Courtright	M F	4
1049		Reid John, laborer	20 Front	M F	4
349		Smith James, laborer	w pt 27, 5	M F	4

P. O. Address
 O 4
 O 4
 O 4
 O 4
 O 4
 O 4
 O 4
 O 4
 O 4
 O 4

Polling Sub-division No. 3.

POLLING SUB-DIVISION NO. 3.—Comprising lots 31 to 54 both inclusive in the Front Concession, and lots 20 to 28 both inclusive in the 6th and 7th Concessions and lots Nos 19 to 28 in the 8th and 9th Concessions. Polling place, Hall at Mooretown.

PART NO 1.—Persons entitled to Vote at both Municipal Elections and Elections to the Legislative Assembly.

Detroit
 O 4
 O 4
 O 4
 O 4
 O 4
 ive As-

No. ON ROLL	Juror	NAME AND OCCUPATION.	LOT, CONCESSION OR STREET.	Owner Tenant M. F.	P. O. Address
1263		Albinson Clarence, sailor	1,2,3,4,5,6 blk 9, Swt's sy	M F O	10
1283		Alexander John, laborer	6 Stewart's sy	M F T	10
492	J	Andrews Mathew, farmer	e hf 20, 7	M F O	10
503	J	Anderson Robert, farmer	e hf 24, 7	M F, Jt O	10
504	J	Anderson Wm, farmer	e hf 24, 7	M F, Jt O	10
1209		Armstrong J J P, doctor	59,60,61,62 Baby sy	M F, Jt O	10
1210	J	Armstrong Sam, law student	84,85,86 24 Baby sy	M F, Jt O	10
1214		Armrod John, gentlemen	9 Baby sy, Mooretown	M F, O	10
1235		Barnes Chancey, laborer	36 Baby sy	M F O	10
511		Baxter Robt H, farmer	e hf 27, 7	M F, O	10
512	J	Baxter John, farmer	e hf 27, 7	M F, Jt O	10
1229		Benedict Charles, cooper	30 Baby sy, Mooretown	M F, T	10
426	J	Bolton Robert, farmer	e hf w hf 27, 6	M F, O	10
514		Bolton Thomas, farmer	Gore 28, 7	M F, Jt O	10
515	J	Bolton George, farmer	Gore 28, 7	M F, Jt O	10
516	J	Bolton Arthur, student	Gore 28, 7	M F, Jt O	10
1212	J	Brightwell Richard, butcher	3 Baby sy	M F, O	10
1213		Brightwell John, butcher	4 Baby sy, Mooretown	M F, O	10
1211	J	Brown William, gentleman	1, 2 Baby sy	M F, O	10
1255		Brown John W, farmer	97 Baby sy	M F, O	10
1289	J	Brown Alex, drover	w pt 48, Front	M F, T	10
1282		Burnie Alex H, sailor	Ft pt 40, 41, Front	M F, O	10
1307		Buck Dr, physician	52 Front	M F, O London	10
1293	J	Burnes James, farmer	49, Front	M F, T	10
585		Cameron Duncan, farmer	e hf 21, 8	M F, Jt O	6
586	J	Cameron Duncan jr, farmer	e hf 21, 8	M F, Jt O	6
587	J	Cameron Charles, farmer	e qr 20, 8	M F, Jt O	6
1198	J	Cassin William, farmer	s hf 34, Front	M F, O	10
1202		Chambers Freeman, cooper	5, 6 Wright's sy	M F, T	10
1221	J	Chambers John, gentleman	13,14,16,17,18 Baby sy	M F, T	10
513	J	Clysdale Samuel, farmer	w hf 27, 7	M F, O	10
1248		Cranston Samuel, laborer	w hf 79, 80 Baby sy	M F, Jt O	10
1284	J	Creighton Thomas, farmer	44 Front	M F, O	10
1287	J	Creighton Henry, farmer	46 Front	M F, O	10
881	J	Cruickshank James, farmer	e § 20, 8	M F, Jt O	6
582	J	Cruickshank Jas W, farmer	e § 20, 8	M F, Jt O	6

TOWNSHIP OF MOORE.

No. ON ROLL	Juror	NAME AND OCCUPATION.	LOT, CONCESSION OR STREET.	Owner Tenant M. F.	P. O. Address
583	J	Cruikshank Alex W, farmer	e § 20, 8	M F, Jt O	6
545	J	Cruikshank George, farmer	o § 20, 8	M F, Jt O	6
1199	J	Cruikshank William, farmer	n hf 34, Front	M F, O	10
411	J	Cunningham Alex, farmer	cen 22, 6	M F, O	10
666	J	Duggan David, farmer	w qr 19, 8	M F, O	6
665	J	Duggan Johu, farmer	e hf 20, 9	M F, O	6
1216		Duggan John, laborer	10 Baby sy, Moorstown	M F, T	10
1280		Dyer Phillip, laborer	10, blk 2 S's sy	M F, O	10
494	J	Edwards Frank, farmer	e hf 21, 7	M F, O	15
493	J	Edwards Emanuel, farmer	w hf 20, 7	M F, O	10
412	J	Eyre George, farmer	w pt 22 6	M F, T	10
1190		Feathrstone Joseph, farmer	s § 32, Front	M F, O	10
403		Finlayson John, farmer	e qr 20, 6	M F, O	10
409	J	Finlayson Alexander, farmer	e qr 22, 6	M F, O	10
410	J	Finlayson James A, farmer	e qr 22, 6	M F, Jt O	10
1204		Flickie Charles, laborer	10, 11, 12 Wright's sy	M F, O	10
1256		Freele Hugh, laborer	72 Baby sy	M F, T	10
418	J	Gaw John, farmer	w hf 24, 6	M F, T	10
1281	J	German William N, farmer	e pt 40, 41 Front	M F, T	10
1224	J	Gillman Charles, sailor	16, 25 Baby sy	M F, O	10
1231		Glass Lowa, musician	31, 32 Baby sy	M F, O	10
1285		Graham Joseph, farmer	w hf 45, Front	M F, Jt O	10
1286	J	Graham Charles E, farmer	w hf 45, Front	M F, Jt O	10
431	J	Hadden Daniel, farmer	29, 6	M F, Jt O	10
597		Hackney Joseph, farmer	w pt 27, 8	M F, O	10
598	J	Hackney Joseph jr, farmer	w hf 27, 8	M F, Jt O	10
423		Hall Albert, farmer	n e cor 26, 6	M F, T	10
675	J	Hagan George, farmer	w qr 25, 9	M F, Jt O	5
429	J	Harkness Edward, farmer	e pt 28, 6	M F, O	10
1245		Haskall Joseph, blacksmith	49, 50, 51, 52, 53 Baby sy	M F, Jt O	10
1236		Haskall Andrew, carpenter	40 Baby sy	M F, O	10
1227		Hay Peter, laborer	29 Baby sy	M F, O	10
1252		Hay Stephen, sailor	117, 118, 119 Baby sy	M F, O	10
502	J	Hescott Joseph, farmer	w hf 23, 7	M F, O	10
663	J	Hescott John W, farmer	w hf 19, 9	M F, Jt O	6
664	J	Hescott William, farmer	e hf 22, 9	M F, Jt O	6
667	J	Hescott George, farmer	e qr 20, 9	M F, O	13
1250	J	Hutchinson Daniel, farmer	99, 100, 101, 102 Baby sy	M F, O	10
1206	J	Hutchinson John, farmer	e pt n hf 35, Front	M F, T	10
1295		Jamison Norman, farmer	n hf 50, Front	M F, Jt O	10
1296	J	Jamison Malcolm, farmer	n hf 50, Front	M F, Jt O	10
414	J	Johnston David H, farmer	w hf 23, 6	M F, Jt O	10
592	J	Johnston Andrew, farmer	w hf 23, 6	M F, Jt O	10
415	J	Johnston Alexander, farmer	e hf 24, 6	M F, Jt O	14
416	J	Johnston Fred, farmer	e hf 24, 6	M F, Jt O	10
417	J	Johnston Samuel, farmer	w hf 24, 6	M F, Jt O	10

TOWNSHIP OF MOORE.

No. ON ROLL	Jaror.	NAME AND OCCUPATION.	LOT, CONCESSION OR STREET.	Owner Tenant M. F.	P. O. Address
1193	J	Kirton Walter, farmer	s hf 33, Front	M F, Jt O	10
1194	J	Kirton Frank, farmer	n hf 32, Front	M F, Jt O	10
493	J	Leroux Peter, farmer	w hf 21, 7	M F, Jt O	10
497	J	Leroux Durcan, farmer	w hf 21, 7	M F, Jt O	10
1197	J	Linton Walter E, farmer	n hf 33, Front	M F, Jt O	10
673	J	Luckey Amos J, farmer	e hf w hf 25, 8 and 9	M F, O	5
595	J	Luckey Andrew, farmer	w qr 25, 8	M F, O	5
1276		Mayhew Israel, sailor	3, blk 8 Stewart's ay	M F, O	10
1240		Mitchell Nesbit, gardener	45, 46 Baby ay	M F, O	10
678	J	Moore James, farmer	w hf 26, 9	M F, Jt T	5
679	J	Moore William, farmer	w hf 26, 9	M F, Jt T	5
680	J	Moore Andrew, farmer	w hf 26, 9	M F, Jt T	5
1298		Morrison Donald, farmer	51, Front	M F, Jt O	5
1297	J	Morrison William A, farmer	51, Front	M F, Jt O	5
1205		Morrison John, tailor	22, 23, 24, 25, 26, 27 Wt's ay	M F, O	10
506	J	Mulholland John, farmer	w hf 24, 7	M F, O	10
1283		Murry John, farmer	43, Front	M F, O	10
1277		McEnney Michael, gentleman	e pt 37, Front	M F, O	10
407	J	McFarlane Alex, farmer	w hf 21, 6	M F, O	10
1299	J	McGlashan Charles, farmer	53, Front	M F, Jt O	5
1300	J	McGlashan David, farmer	53, Front	M F, O	5
668		McGurk Henry, farmer	23, 9	M F, O	6
1241		McKinnon Roderick, merchant	11, blk 2, Stewart's ay	M F, T	10
1188		McQuillen George, clergyman	w pt 31, Front	M F, T	10
1267		McLean Norman, laborer	22 By ay, 11, 12 blk 9 St ay	M F, T, O	10
421	J	McRae Peter, farmer	w hf 25, 6	M F, O	10
427		McRae John, farmer	w qr 27, 6	M F, Jt O	10
428	J	McRae Alex, farmer	w qr 27, 6	M F, Jt O	10
1339		McRae John, merchant	7, w hf 8, blk 2 St's ay	M F, O	10
588	J	Neal Walter, farmer	w hf 21, 8	M F, O	6
499	J	Nesbit James, farmer	w hf 22, 7	M F, O	10
589	J	Nesbit Charles, farmer	w hf 22, 8	M F, O	6
1237		Nesbit George, laborer	73 Baby ay	M F, T	10
1217	J	Noyle Charles F, undertaker	5, 11, 12 Baby ay	M F, Jt O	10
1218		Noyle Fred A, undertaker	5, 11, 12 Baby ay	M F, Jt O	10
1272		Papst Henry, laborer	9, blk 8, St's ay	M F, T, M F	10
1258		Papst Ellsworth, laborer	43 Baby ay	M F, T, M F	10
1232		Papst Simeon H, laborer	6, blk 8, St's ay	M F, T	10
1269		Papst Norman, laborer	6, blk 8, St's ay	M F, Jt T	10
593	J	Payne Joseph, farmer	w qr 24, 8	M F, Jt O	10
594	J	Payne Josh E, farmer	w qr 24, 8	M F, Jt O	10
1279		Rielly Charles, farmer	37, 38, Front	M F, O	10
676		Richardson William, farmer	e hf 26, 9	M F, Jt O	5
677	J	Richardson George, farmer	e hf 26, 9	M F, Jt O	5
682	J	Richmond David, farmer	w hf 27, 9	M F, Jt O	5
683	J	Richmond John, farmer	w hf 27, 9	M F, Jt O	5
684	J	Richmond Joseph, farmer	e hf 26, 8	M F, Jt O	5

No. on Roll	Juror.	NAME AND OCCUPATION.	LOT, CONCESSION OR STREET.	Owner Tenant M. F.	P. O. Address.
591	J	Robbins Frank, farmer	e hf 25, 9	M F, Jt O	5
670		Robbins John, farmer	e qr, 24, 9	M F, Jt O	14
589	J	Robbins Andrew, farmer	e hf 23, 8	M F, O	5
681	J	Robbins George, farmer	e hf 27, 9	M F, O	5
1251		Scott Henry, laborer	7,9,20,21 park lots, M'n	M F, O	10
1305		Scott William, farmer	54, Front	M F, Jt O	5
1306	J	Scott William J, farmer	54, Front	M F, Jt O	5
1195	J	Shepherd Charles, farmer	n hf 33, Front	M F, T	10
671	J	Smith Robert, farmer	w 2 24, 9	M F, Jt O	5
672		Smith William, farmer	w 2 24, 9	M F, Jt O	5
1280		Smithers James, clergyman	39, Front	M F, O	10
1291	J	Stanley Mathew, farmer	e pt 48, Front	M F, O	5
579		Struthers James, farmer	e hf w hf 19, 8	M F, Jt O	6
580	J	Struthers John, farmer	e hf w hf 19, 8	M F, Jt O	6
430	J	Sut on Seymore, farmer	w pt 28, 6	M F, T	10
1220		Terwillingar Jos J, laborer	15 Baby sy	M F, O	10
405	J	Trapp George, farmer	w hf 20, 6	M F, Jt O	10
406		Trapp Hugh, farmer	w hf 20, 6	M F, Jt O	10
1228		Tremells Richard, sawyer	43, 71 Baby sy	M F, O	10
1225		Tremells Isaac, teacher	21 Baby sy	M F, O	10
419	J	Turnbull Joseph, farmer	e hf 25, 6	M F, Jt O	10
420		Turnbull William, farmer	e hf 25, 6	M F, Jt O	10
507	J	Turnbull William jr, farmer	e hf 27, 7	M F, O	10
1261		Watson Alexander, saddler	23,103 Baby sy, pk lot 17	M F, O	10
413	J	Wardrop Andrew, farmer	e hf 23, 6	M F, O	10
498		Wignore William, drover	e hf 22, 7	M F, O	14
1288	J	Wells John N, farmer	47, Front	M F, O	10
501	J	White Alexander, farmer	e hf 23, 7	M F, O	10
1273		Whiting John, gentleman	8, blk 1 Stewart's sy	M F, Jt O	10
1247		Wood W R, carriage maker	67, 68, 69, 70 Baby sy	M F, O	10
1278	J	Woodward Arthur, farmer	37, 38 Front	M F, T	10

PART NO. II.—Persons entitled to vote at Municipal Elections only

1207		Anderson Wm D, physician	n e pt 35, Front	O Otterville	
505		Anderson Ann, widow	e hf 24, 7	Jt O	10
1208		Armstrong Jane A, widow	9, 17, 18 Wright's sy	Jt O	10
424		Baxter Jane, widow	w hf 26, 6	Jt O	10
1222		Chambers Frances, spinster	16, 17, 18 Baby sy	O	10
1238		Finnigan Bridget, widow	73 Baby sy	O	10
1187		Gamble Mrs, widow	8 Baby sy	O Detroit	
1201		Gordon D J, salt mfr	1,2,3,3,19,20 Wt's sy	Jt O	Wallaceb'g
1264		Hadden Isabella, widow	6 Stewart's sy	O	10
674		Hagan Jane, widow	w hf 25, 9	Jt O	10
1234		Hamilton John, laborer	34,35,38, 39 Baby sy	O Wilkesport	
1242		Leggatt G J, merchant	55,56,57,64,65,66 Baby sy	O Windsor	
496		Leroux Ann, widow	w hf 21, 7	Jt O	10

Polling Sub-division No. 4.

POLLING SUB-DIVISION NO. 4.—Comprising lots 55 to 72 both inclusive Front Concession, and lots 16 to 27 inclusive on the 10th, 11th and 12th Concessions. Polling place, Hall at Cornuna.

PART NO. I.—Persons entitled to Vote at both Municipal Elections and Elections to the Legislative Assembly.

No. ON ROLL	Juror.	NAME AND OCCUPATION.	LOT, CONCESSION OR STREET.	Owner Tenant M. F.	P. O. Address
737		Alexander David, farmer	e hf w hf 16, 10	M F, Jt O	8
738	J	Alexander Robert, farmer	e hf w hf 16, 10	M F, Jt O	8
739	J	Alexander Walter, farmer	e hf w hf 16, 10	M F, Jt O	8
740	J	Alexander John, farmer	w qr 16, 10	M F, O	8
756		Allingham John, farmer	w hf 21, 10	M F, O	5
847	J	Austin Alex, farmer	w hf 24, 10	M F, Jt O	5
845	J	Austin Robert, farmer	w hf 24, 10	M F, Jt O	5
846	J	Austin George, farmer	w hf 24, 10	M F, Jt O	5
749	J	Babcock Sylvester, farmer	w hf 19, 10	M F, T	8
1349		Baxter Alfred, grocer	15 w Lyndock st	M F, T	5
1361		Bell W D, clergyman	w pt 58, Front	M F, T	5
1327		Benner Robert, gentleman	11 e Beresford st	M F, O	5
1381		Bennett Thomas, farmer	17, 18, 19, 20, 21 n Hill at	M F, Jt O	5
1382		Bennett Edward, sailor	17 to 21 n Hill at	M F, Jt O	5
1383		Bennett Bernard, sailor	17 to 21 n Hill at	M F, Jt O	5
763	J	Birmingham William, farmer	e qr 24, 10	M F, T	5
855	J	Birmingham James, farmer	e hf 24, 11	M F, Jt T	5
856	J	Birmingham Luke, farmer	e hf 24, 11	M F, Jt T	5
1384		Birmingham David, carpenter	24, 25, 26 n Paget st	M F, O	5
1420		Bridges William, gentleman	1 Telford sy, Froome	M F, O	5
1372	J	Burdan William H, laborer	8 to 13 s Fane st	M F, O	5
854	J	Cain Edward, farmer	e 1/2, w hf 23, 11	M F, Jt O	5
828	J	Callum Duncan, farmer	cen pt 16, 11	M F, Jt O	8
829	J	Callum John, farmer	w pt 16, 11	M F, Jt O	8
1360		Callum Donald, gentleman	w hf e hf 23, 11	M F, Jt O	5
830	J	Callum Hugh, farmer	w pt 16, 11	M F, Jt O	8
1312		Cameron Geo. coal inspector	Ft pts 57, 58, Front	M F, Jt O London	
832	J	Carpen'er Robt, farmer	w hf 17, 11	M F, T	8
964	J	Carruthers Francis, farmer	w hf 19, 12	M F, O	9
1430	J	Clysdale John, farmer	e pt 70, 71 Front	M F, O	5
1431	J	Clysdale James jr, farmer	pts 71, 72 Front	M F, Jt O	5
1432		Clysdale James sr, farmer	pts 71, 72 Front	M F, Jt O	5
836		Cooper George, farmer	w pt 19, 11	M F, O	5
1313		Cooper Thomas, farmer	w pt 58, Front	M F, O	5
1367		Cowan Thomas, gentleman	10, n Hill st	M F, O	5
852	J	Cowan Thomas M, farmer	w hf e hf 23, 11	M F, Jt O	5
759		Cowan William, farmer	cen 22, 10	M F, O	5
758	J	Cowan George W, farmer	cen 22, 10	M F, Jt O	5

TOWNSHIP OF MOORE.

15

No. ON ROLL	Juror	NAME AND OCCUPATION.	LOT, CONCESSION OR STREET.	Owner Tenant M. F.	P. O. Address
760	J	Cowan Robert, farmer	e qr 23, 10	M F, Jt O	5
761	J	Cowan Robert A, farmer	e qr 23, 10	M F, Jt O	5
1370		Cowan James, farmer	w pt cen 22, 10	M F, Jt O	5
1415		David Theopholis, carpenter	17, 18, 19 Br'd ay, Froome	M F, O	5
1416		David Joseph, merchant	17, 18, 19 Br'd ay, Froome	M F, Jt O	5
1336	J	Davidson Thomas, blacksmith	7 w Lyndock st	M F, O	5
999		Daroch Peter, gentleman	w hf 1 pk lot, Froome	M F, O	5
831	J	DeGursie Peter jr, farmer	e hf 17, 11	M F, Jt O	8
837		DeGursie Samuel, farmer	e hf 20, 11	M F, O	5
938	J	DeGursie Lewis, farmer	e hf 20, 11	M F, Jt O	5
829	J	DeGursie John, farmer	e hf 20, 11	M F, Jt O	5
982	J	Dobson William, farmer	w hf 23, 12	M F, Jt O	14
983		Dobson Albert farmer	w hf 23, 12	M F, Jt O	14
1311		Durand Andrew, fire inspector	w pt 57, Front	M F, Jt O	London
1368		Edwards James, gentleman	21 w Murray st	M F, O	5
1308	J	Edwards Robert S, farmer	55, Front	M F, O	5
1357		Edwards David, gentleman	22, 23 w Lyndock st	M F, O	5
1343	J	Edwards Joseph, carpenter	19, 11 e Lyndock st	M F, O	5
1352	J	Ellis Thomas C, sailor	19, 20, 21 w Lyndock st	M F, O	5
1355		Ellis Thomas, gentleman	20, 21, n hf 17, e Lyndock st	M F, O	5
746		Ford Thomas B, farmer	e qr 19, 10	M F, O	5
1393		Ford William, gentleman	1 to 8 e Alfred st	M F, O	5
833		Ford Henry, farmer	e hf 18, 11	M F, O	8
1377		Garroch John, mason	1, 2, 3 e Bentick st	M F, Jt O	5
1378		Garroch Daniel, laundryman	1, 2, 3 e Bentick st	M F, Jt O	14
1379		Garroch Wm, laundryman	1, 2, 3 e Bentick st	M F, Jt O	14
962		Gibb John S, farmer	18, 12	M F, Jt O	14
998		Gibb John, farmer	gore 27, 12	M F, Jt O	14
997	J	Gibb Robert R, farmer	gore 27, 12	M F, Jt O	14
988	J	Gibb Robert, farmer	w hf 24, 12	M F, Jt O	14
978		Gibb Archibald sr, farmer	e hf 23, 12	M F, Jt O	14
979	J	Gibb Archibald jr, farmer	e hf 23, 12	M F, Jt O	14
980	J	Gibb William J, farmer	e hf 23, 12	M F, Jt O	14
981	J	Gibb Robert M, farmer	18, 12	M F, Jt O	14
1371		Gilbert Wm J, weaver	22, 23, 24 w Murray st	M F, O	15
1310		Goldie George, farmer	56, 57 Front	M F, O	Montreal
1342	J	Gough Rich H, hotel keeper	8, 9 e Lyndock st	M F, O	5
1326		Grant John, gentleman	9, 10 e Beresford st	M F, O	5
762	J	Haekney William, farmer	w hf e 23, 10	M F, O	5
1406	J	Harrold John W, farmer	65, Front	M F, O	5
840	J	Hagen James, farmer	w hf 20, 11	M F, Jt O	5
966		Hewett Simeon, farmer	e hf 20, 12	M F, T	14
968	J	Hewett James, farmer	w qr 20, 12	M F, Jt O	14
969	J	Hewett Joseph, farmer	w qr 20, 12	M F, Jt O	14
771	J	Hossie Henry, farmer	w 25, 10	M F, O	5
827	J	Hossie Thomas, farmer	e qr 16, 11	M F, O	8
983	J	Hossie James, farmer	e hf 19, 12	M F, O	9
957	J	Hossie Andrew, farmer	e hf 17, 12	M F, Jt O	9
958	J	Hossie A L, farmer	e hf 17, 12	M F, Jt O	9

TOWNSHIP OF MOORE.

No. ON ROLL	Jurat	NAME AND OCCUPATION.	LOT, CONDEMNION OR STREET.	Owner Tenant M. F.	P. C. Add.
989		Johnston Alex, farmer	e hf 25, 12	M F, Jt O	5
990	J	Johnston William, farmer	e hf 25, 12	M F, Jt O	5
1398		Kearney Michael, laborer	5 6 7, 8 e Colborne st	M F, Jt O	5
1887		Kemmist George, gentleman	8, 9, 11, 14 w Colborne	M F, O	5
1889		Krohn Henry, laborer	9 10 e Colborne st	M F, O	5
1004		Laforge Lewis, sailor	e hf pk lot 1, Froome	M F, O	5
1335		Laforge Joseph, laborer	19 e Lyndock st	M F, O	5
1391		Lang James, farmer	1, 2, 3, 4 e 1, 2, 3, 4 w Cib'n	M F, O	5
786	J	Lapier Joseph, farmer	e hf 16, 10	M F, O	8
741	J	Lapier Frank, farmer	w qr 17, 10	M F, O	8
747	J	Lapier George, farmer	w hf e hf 19, 10	M F, O	8
1359		Lapier Peter, gentleman	26 27 28 w Lyndock st	M F, O	5
751	J	Leighton William, farmer	e hf 20, 10	M F, O	8
1368	J	Lock Thomas, sailor	3 4, 5 s Paget st	M F, O	5
1369		Lock William, grocer	10 to 14 w Murray at	M F, Jt O	5
864	J	Maguire James W, merchant	gore 27, 11	M F, O	5
865		Maguire John, gentleman	15 e Lyndock st	M F, O	5
1386		Metge Richard, civil engineer	10, 11, 12, 13 n Paget st	M F, O	5
1428		Maw James, farmer	7 Telford's sy, Froome	M F, O	5
1426		Maw Newton, farmer	5, 6 Telford's sy, Froome	M F, O	5
934	J	Miller John, farmer	n e qr 24, 12	M F, O	14
1318	J	Mills Nelson, lumber mer'ht	Stag Island	M F, O Marysville	
765	J	Minton John, farmer	w hf e hf 24, 10	M F, Jt O	5
768	J	Minton Joseph, farmer	w hf e hf 24, 10	M F, Jt O	5
1380	J	Moody John, farmer	24, 25, 26 e Baird at	M F, O	5
1400		Morrison Lachlan, farmer	33, 64 Front	M F, Jt O	5
1401	J	Morrison L P, farmer	63, 64 Front	M F, Jt O	5
1402	J	Morrison James D, farmer	63, 64 Front	M F, Jt O	5
1403	J	Morrison Neal L, farmer	63, 64 Front	M F, Jt O	5
1404	J	Morrison William R, farmer	63, 64 Front	M F, Jt O	5
976	J	Mowbray William O, farmer	w hf 22, 12	M F, Jt O	14
975	J	Mowbray William, farmer	w hf 22, 12	M F, Jt O	14
977	J	Mowbray John H, farmer	w hf 22, 12	M F, Jt O	14
842	J	Mulligan James, farmer	e pt 21, 11	M F, Jt O	5
843	J	Mulligan John, farmer	e pt 21, 11	M F, Jt O	5
1323		Mugan J G, R C priest	2, 3, 4 e Beresford at	M F, T	5
841		Mulligan Thomas, farmer	e pt 21, 11	M F, Jt O	5
970		Murray Robert, farmer	21, 12	M F, Jt O	14
971	J	Murray George, farmer	21, 12	M F, Jt O	14
972	J	Murray Thomas, farmer	21, 12	M F, Jt O	14
1351		McBean Angus, gentleman	19 and 20 w Lyndock	M F, T	5
834		McCoy Michael, farmer	w hf 18, 11	M F, Jt O	5
835	J	McCoy Thomas, farmer	w hf 18 11	M F, Jt O	5
965	J	McGill Joseph, farmer	e hf w hf 20, 12	M F, O	14
859	J	McGill Joseph, farmer	e hf 25, 11	M F, O	5
1394		McGill John, bailif	4, 5, 6, 7 w Albert at	M F, O	5
1325		McGregor John, gentleman	8 e Bentick st	M F, O	5
848		McLaughlin J sen, farmer	w hf 22, 11	M F, Jt O	5
849	J	McLaughlin Thomas, farmer	w hf 22, 11	M F, Jt O	5

No. ON ROLL	Juror.	NAME AND OCCUPATION.	LOT, CONCESSION OR STREET.	Owner Tenant M. F.	P. O. Address
1316		Tackberry G W, com trav	4 e Tom st	M F, O	London
1315		Thompson G J A, clergyman	1 e Tom st	M F, O	5
1411	J	Turnbull J, farmer	68, Front	M F, O	5
1429	J	Warwick William, laborer	n w pt 71, Front	M F, O	5
1356	J	Ward Edward, farmer	e pt 60, Front	M F, O	5
1414	J	Warwick D, sailor	3,4,10,11 Bertrand ay, Fd	M F, O	5
1333		Watson Edward, grocer	n 1/2 17 w Lyndock st	M F, Jt O	5
1339		Watson William, grocer	n 1/2 17 w Lyndock st	M F, Jt O	5
1340		Watson Reuben, wagon mk'r	6,7 e Lyndock st	M F, O	5
1374		Watt William, laborer	26 w Murray st	M F, Jt O	5
1375		Watt Alexander, laborer	26 w Murray st	M F, Jt O	5
752		Wellington Henry, farmer	w hf 20, 10	M F, Jt O	5
753	J	Wellington J J, farmer	w hf 20, 10	M F, Jt O	5
754	J	Wellington D, farmer	e hf 21, 10	M F, Jt O	5
755	J	Wellington H J, farmer	e hf 21, 10	M F, Jt O	5
1353		Wilson Zachariah, farmer	8,9 w Murray st	M F, O	5
744	J	Wilson George, farmer	s w pt 21, 11	M F, O	5
757	J	Wilson James, farmer	e pt 22, 10	M F, O	5
772	J	Wilson John, farmer	e hf w hf 28, 10	M F, O	5
1419		Wing F C, gentleman	n w cor 70, Front	M F, O	5
1337	J	Zink Joseph A, shoemaker	8,9 w Lyndock st	M F, O	5

PART NO. II.—Persons entitled to Vote at Municipal Elections only.

1350		Baxter Sarah, widow	15 w Lyndock st	T	5
856		Birmingham Eliza, widow	e hf 24 Lyndock st	Jt O	5
1317		Buck Frances, widow	4 w Lyndock st	O	5
1333		Burlett Mary, widow	11 w Lyndock st	O	5
1399		Bury Emira, widow	16,17 w Murray st	O	5
853		Cain Margaret, widow	e 1/2 w hf 23, 11	Jt O	5
1392		Clothier Edward, farmer	10,11,12,13,14 e Bentinck	O Alvinston	
967		Cruise Ada, widow	e hf 20, 12	O Detroit	
1417		David Minnie, spinster	park lot D, Froomefield	O	5
981		Dobson L, widow	w hf 23, 12	Jt O	5
1331		Farquharson Eliza, widow	24,25,28 w Beresford st	Jt O	14
1330		Farquharson John, merchant	24,25,28 w Beresford st	Jt O	14
1006		Gowling Mary, spinster	park lot 4, Froomefield	O	5
1398		Hagan Ann, widow	4 e Hill st	O	5
955		Hossie Hattie, widow	n hf 16, 12	O	14
1329		Johnston Thomas, physician	21,22,23 w Beresford st	O	14
860		Kearney Julia, widow	w qr 25, 11	Jt O	5
748		Lapier Mary, widow	w hf e 19, 10	O	5
743		Moore J H B, farmer	e hf 18, 10	O	14
1320		Morrison Flora, spinster	22, 23 e Beresford st	O	2
761		Needham Hattie, widow	e qr 24, 10	O	5

TOWNSHIP OF MOORE

No. on ROLL	NAME AND OCCUPATION.	LOT, CONCESSION OR STRAY.	Owner Tenant M. F.	P. O. Address
744	Seward Jeanette, widow	e pt 58, Front	Jt O	5
905	Sheoch Mary, widow	w hf 28, 12	Jt O	5
1418	Turnbull Isabella, widow	12 Cross st, Froomefield	O	5
1345	Urquhardt Hannah, widow	n hf 16 e Lyndock st	O	5
1376	Watson Agnes, widow	9 to 14 Corborne st	Jt O	5
1422	Warwick Mary, widow	3,4 Ft Telford sy, Froome	O	5

PART NO. III.—Persons entitled to Vote at Elections to the Legislative Assembly only.

866	Barber John, farmer	55, Front	M F	5
1003	Deroch John, laborer	n hf 1 Davis sy, Froome	M F	5
1000	Deroch Mitchell, laborer	n hf 1, Davis sy	M F	5
1002	Deroch Eli, sailor	Froomefield	M F	5
1001	Deroch Joseph, sailor	Froomefield	M F	5
1408	Ellis Albert, laborer	66, Front	M F	5
1373	Gilbert George, laborer	w Lyndock st, Coranna	M F	5
1396	Laforge John, engineer	22 e Beresford st	M F	5
1427	Maw William, laborer	pt 5 Telford's sy, Froome	M F, O	5
993	Miller Robert, laborer	e hf 28, 12	M F	5
996	McDonald Henry, laborer	w hf 26, 12	M F	5
770	Smith Isaac, laborer	lot 25, 10	M F	5
1324	Thomas William, farmer	6 w Beresford st	M F	5
1423	Warwick George, sailor	Froomefield	M F	5
1424	Warwick Earnest, sailor	3 Telford's sy, Froomefield	M F	5
980	Wilson Hugh, laborer	w hf 17, 12	M F	9

Polling Sub-division No. 5.

POLLING SUB-DIVISION NO. 5.—Comprising lots 13 to 18 both inclusive 4th and 5th Concessions, and lots 10 to 19 both inclusive in the 6th and 7th Concessions and lots 16 to 18 both inclusive in the 8th and 9th Concessions. Polling place, Town Hall.

PART NO. 1.—Persons entitled to Vote at both Municipal Elections and Elections to the Legislative Assembly.

No. ON ROLL	Sex	NAME AND OCCUPATION.	LOT, CONCESSION OR STREET.	Owner Tenant M. F.	P. U. Add.
327	J	Andrews Isaac, farmer	e hf 17, 5	M F, O	7
232	J	Andrews Jacob, farmer	n pt e hf 13, 4	M F, Jt O	7
233	J	Andrews Adam, farmer	e hf w hf 13, 4	M F, O	7
320	J	Andrews Henry, farmer	s e qr 16, 5	M F, Jt T	7
317	J	Andrews George, farmer	s pt 13, 5	M F, Jt O	7
652	J	Anderson James, farmer	e hf 17, 9	M F, Jt O	6
319	J	Arnold Charles, farmer	n hf s hf 15, 5	M F, O	7
318	J	Arnold Joseph G, farmer	s qr 15, 5	M F, O	7
395	J	Beaton John M, farmer	e pt 17, 6	M F, O	15
391	J	Blackman Lewis, farmer	s hf 15, 6	M F, O	7
392	J	Blackman James, farmer	e hf 14, 7	M F, O	7
474	J	Blake James, farmer	n w oor 15, 6	M F, O	15
473	J	Blake William, farmer	n hf 15, 6	M F, O	15
390	J	Booth William, farmer	cen pt 14, 6	M F, Jt O	15
390	J	Booth James, farmer	cen pt 14, 6	M F, Jt O	15
398	J	Booth George, farmer	w qr 17, 6	M F, O	15
323	J	Booth Benjamin, farmer	s hf 18, 5	M F, O	7
573	J	Brown James, farmer	w qr 17 & other prop 9	M F, Jt O	6
393	J	Burns Thomas, farmer	cen 16, 6	M F, Jt O	15
394	J	Burns Laurence, farmer	cen 16, 6	M F, Jt O	15
560		Cameron Alex, farmer	e qr 16, 8	M F, O	6
325	J	Connors Thomas, farmer	w hf 16, 5	M F, O	7
363	J	Courtney John, farmer	w hf 11, 6	M F, O	2
467	J	Courtney Michael, farmer	e hf 13, 7	M F, O	15
468	J	Courtney W F, farmer	s qr 12, 6	M F, O	15
651	J	Cruickshank George, farmer	w hf 16, 9	M F, Jt O	6
402	J	Edwards Mark, farmer	w hf 19, 6	M F, O	10
481	J	Eyre Chas A farmer,	e hf 18, 7	M F, Jt O	15
482	J	Eyre William, farmer	e hf 18, 7	M F, Jt O	15
246	J	Ford Robert, farmer	w hf 18, 4	M F, Jt O	7
245	J	Ford James, farmer	w hf e hf 18, 4	M F, Jt O	7
470	J	Gray William, farmer	e q 15, 7	M F, Jt O	15

TOWNSHIP OF MOORE.

No. ON ROLL	NAME AND OCCUPATION.	LOT, CONCESSION OR STRAET.	Owner Tenant M. F.	Acres
471	J Gray John farmer	e s 15 & e hf 21, 6	M F, O	15
472	J Gray James, farmer	w qr 15, 7	M F, Jt O	15
224	J Hand Robert, farmer	e pt 15, 4	M F, Jt O	7
490	J Harkness James, farmer	w hf 14, 7	M F, O	15
230	J Harkness Samuel, farmer	n hf a hf 16, 4	M F, O	7
489	J Harkness William, farmer	e hf w hf 18, 7	M F, O	15
242	J Ingles Daniel, farmer	w qr 17, 4	M F, Jt O	7
243	J Ingles Edward, farmer	w qr 17, 4	M F, Jt O	7
244	J Ingles Joseph, farmer	e hf w hf 17, 4	M F, Jt O	7
570	J Jarvis James S, farmer	cen 18, 8	M F, O	6
496	J Jarvis J J, farmer	e qr 19, 7	M F, O	7
487	J Jarvis James, farmer	e hf 19, 6	M F, O	7
490	J Kemp Alfred, farmer	w hf e hf 19, 7	M F, O	15
321	J Kimball James, farmer	s e cor 15, 5	M F, O	7
386	J Leaper William, farmer	s qr 13, 6	M F, Jt O	15
387	J Leaper Charles, farmer	a qr 13, 6	M F, Jt O	15
388	J Leaper Joseph, farmer	s qr 13, 6	M F, Jt O	15
491	J Long Arthur, farmer	w hf 19, 7	M F, Jt O	15
462	J Marsh John, farmer	w hf 11, 7	M F, Jt O	2
463	J Marsh William H, farmer	w hf 13, 7	M F, Jt O	2
464	J Marsh Hilliard, farmer	n w pt 12, 6	M F, Jt O	2
566	J Medley Francis, farmer	e pt 18, 8	M F, Jt O	6
567	J Medley James, farmer	e pt 18, 8	M F, Jt O	6
568	J Medley Robert, farmer	e pt 18, 8 & other prop	M F, Jt O	6
569	J Medley Albert, farmer	e pt 18, 8 & other prop	M F, Jt O	6
315	J Menzies William, farmer	s hf n hf 13, 14, 5	M F, O	2
316	J Menzies Alexander, farmer	n qr 13, 14, 5	M F, O	2
457	J McBean Lewis, farmer	e hf 10, 7	M F, Jt O	2
458	J McBean Robert, farmer	e hf 10, 7	M F, Jt O	2
459	J McBean Harry, farmer	e hf 10, 7	M F, Jt O	2
460	J McBean John A, farmer	w hf 10, 7	M F, O	2
656	J McClemens Richard, farmer	e hf 18, 9	M F, Jt O	6
657	J McClemens James, farmer	e hf 18, 9	M F, Jt O	6
658	J McClemens Alex, farmer	e hf 18, 9 e qr 19 8	M F, Jt O	6
659	J McClemens Richard, farmer	e qr 19, 8	M F, Jt O	6
660	J McClemens John, farmer	e qr 19, 8	M F, Jt O	7
239	J McDonald Allen, farmer	n e qr 16, 4	M F, O	7
240	J McDonald Alex, farmer	n w qr 16, 4	M F, O	7
241	J McDonald Michael, farmer	e hf 17, 4	M F, O	7
385	J McDonald Richard, bailiff	e qr 14, 6	M F, O	14
465	J McDonald William, farmer	e hf 12, 7	M F, O	2
466	J McDonald Adam, mason	w hf 12, 7	M F, O	14
382	J McDonald John, farmer	w hf 10, 6	M F, Jt O	2
476	J McDonald Neal, farmer	w hf 16, 7	M F, O	15
236	J McEwen Peter, farmer	e hf 14, 4	M F, O	7
475	J McKay Alex insurance agent	w hf e hf 16, 7	M F, O	15

both inclu-
th and 7th
concessions.

otions and

er
ant
F. O.
P. O.
Add

F. O. 7
Jt O 7
F. O. 7
Jt T 7
Jt O 7
Jt O 6
F. O. 7
F. O. 7

F. O. 15
F. O. 7
F. O. 7
F. O. 15
Jt O 15
Jt O 15
F. O. 15
F. O. 7
Jt O 6
Jt O 15
Jt O 15

F. O. 6
F. O. 7
F. O. 2
F. O. 15
F. O. 15
Jt O 6

F. O. 10
Jt O 5
Jt O 15
Jt O 7
Jt O 7

Jt O 15

TOWNSHIP OF MOORE

No. on Roll	Sex	NAME AND OCCUPATION.	LOT, CONGRESSION OR STREET.	Owner Tenant M. F.	P. O. Address
322		Nicholson William, farmer	n hf 15, 5	M F, Jt O	7
323	J	Nicholson Wm, J farmer	n hf 15, 5	M F, Jt O	7
1599	J	Nicholson, Thomas H, farmer	n hf 15, 5	M F, F S	7
324	J	Piggott Henry, farmer	n e qr 16, 5	M F, O	7
400	J	Roan Thomas, farmer	w hf e hf 18, 6	M F, Jt O	15
401	J	Roan Patrick, farmer	w hf e hf 18, 6	M F, Jt O	15
397	J	Robbins Albert farmer	n w qr 18, 6	M F, O	15
326	J	Shaw Phelan, farmer	w hf 17, 5	M F, O	7
495	J	Smith Thomas, farmer	w qr 18, 7	M F, O	15
564	J	Smith Oliver, farmer	e hf 17, 8	M F, O	6
565		Smith Peter, farmer	w hf 17, 8	M F, O	6
571		Smith John, farmer	w qr 18, 8	M F, Jt O	6
572	J	Smith Wesley, farmer	w qr 18, 8	M F, Jt O	6
647	J	Smith Henry, farmer	e hf 18, 9	M F, Jt O	6
648		Smith Samuel, farmer	e hf 16, 9	M F, Jt O	6
655	J	Smith Henry M, farmer	e hf w hf 17, 9	M F, O	6
661	J	Smith Robert J, farmer	w hf 18, 9	M F, O	6
380	J	South Samuel J, farmer	e hf 10, 6	M F, O	2
479		Starr Matthew, farmer	w qr 17, 7	M F, Jt O	15
480	J	Starr James, farmer	w qr 17, 7	M F, Jt O	15
332	J	Taggart William, farmer	n hf 18, 5	M F, O	7
237	J	Wells William S, farmer	w pt e pt 15, 4	M F, O	7
238		Wells William, farmer	w hf 15, 4	M F, O	7
562		White Alex, farmer	w 2 18, 8	M F, Jt O	6
563	J	White W J, farmer	w 2 18, 8	M F, Jt O	6

PART NO. II.—Persons entitled to vote at Municipal Elections only.

653		Anderson Annie, widow	e hf 17, 9	Jt O	6
574		Brown Margaret, widow	e qr 17 and other property 9	Jt O	6
575		Brown Margaret, spinster	e qr 17, 9	Jt O	6
577		Brown Annie, spinster	e qr 17, 9	Jt O	6
384		Courtney Jane, widow	w qr 11, 6	Jt O	2
461		Duncan Isabella, widow	e hf 11, 7	O	2
483		Eyre Annie, widow	e hf 18, 7	Jt O	15
470		Gray Tillie, spinster	e 2 15, 7	Jt O	15
381		McDonald Jane, widow	w hf 16, 6	Jt O	2
399		Roan Ellen, widow	w hf e hf 18, 6	Jt O	15

Owner Tenant M. F.	P. O. Add'n
M F, Jt O	7
M F, Jt O	7
M F, F S	7
M F, O	7
M F, O	15
M F, Jt O	15
M F, O	15
M F, O	7
M F, O	15
M F, O	6
M F, O	6
M F, Jt O	6
M F, Jt O	6
M F, Jt O	6
M F, Jt O	6
M F, O	6
M F, O	6
M F, O	2
M F, Jt O	15
M F, Jt O	15
M F, O	7
M F, O	7
M F, O	7
M F, Jt O	6
M F, Jt O	6

TOWNSHIP OF MOORE.

No. on ROLL	Name and Occupation	Lot, Concession or Street.	Owner Tenant M. F.	P. O. Add'n
477	Ryan Margaret, widow	• hf w hf 17, 7	Jt O	15
478	Ryan Mary, spinster	• hf w hf 17, 7	Jt O	15

PART NO. 3.—Persons entitled to Vote at Elections to the Legislative Assembly only.

660	Alexander John, laborer	• hf 16, 9	M F	6
654	Finch Charles, laborer	17, 9	M F	6
396	Munroe Archibald, laborer	17, 7	M F	15

s only.

Jt O 6

9 Jt O 6

Jt O 6

Jt O 6

Jt O 2

O 2

Jt O 15

Jt O 15

Jt O 2

Jt O 15

Polling Sub-division No. 6.

POLLING SUB-DIVISION NO. 6.—Comprising lots 1 to 15 both inclusive in the 10th, 11th and 12th Concessions. Polling place, School House at Providence.

PART NO. I.—Persons entitled to Vote at both Municipal Elections and Elections to the Legislative Assembly.

No. ON ROLL	Juror.	NAME AND OCCUPATION.	LOT, CONCESSION OR STREET.	Owner		P. O. Address
				Tenant	M. F.	
730	J	Abra James, farmer	w hf e hf 14, 10	M	F, O	8
722		Alexander William, farmer	e qr 12, 10	M	F, Jt O	16
723	J	Alexander James, farmer	e qr 12, 10	M	F, Jt O	16
717	J	Allingham Ruben, farmer	e hf 10, 10	M	F, O	16
718	J	Allingham Alfred, farmer	w hf 10, 10	M	F, Jt O	16
719	J	Allingham Andrew, farmer	w hf 10, 10	M	F, Jt O	16
906	J	Ansell Frederick, farmer	e hf 6, 12	M	F, Jt T	11
907	J	Ansell William, farmer	e hf 6, 12	M	F, Jt T	11
778	J	Bayles John R, farmer	e hf 2, 11	M	F, T	16
949		Bell Adam, farmer	e hf 15, 12	M	F, Jt O	9
948	J	Bell Adam C, farmer	w hf 14, 12	M	F, Jt O	9
703	J	Bell George jr, farmer	e q 10, 10	M	F, Jt O	16
951	J	Bell Alex, farmer	e hf 15, 12	M	F, Jt O	9
950	J	Bell William C, farmer	e hf 15, 12	M	F, Jt O	9
713	J	Boyle John R, teacher	e hf 8, 10	M	F, Jt O	16
714	J	Boyle Alfred, farmer	e hf 8, 10	M	F, Jt O	16
695	J	Bruce Alexander, farmer	pt lots 3, 9 and 10	M	F, O	12
784	J	Bruton Frederick, farmer	w hf w q 3, 11	M	F, O	16
785	J	Bruton John, farmer	e hf w q 13, 11	M	F, O	16
823		Burr Ruben N, farmer	e hf 15, 11	M	F, Jt O	8
824	J	Burr James K, farmer	e hf 15, 11	M	F, Jt O	8
729	J	Callum James F, farmer	e qr 14, 10	M	F, O	8
731	J	Callum John, farmer	w hf 14, 10	M	F, Jt O	8
732	J	Callum William J, farmer	w hf 14, 10	M	F, Jt O	8
733	J	Callum Frederick, farmer	w hf 14, 10	M	F, Jt O	8
787	J	Colter James, farmer	5, 11	M	F, T	16
793	J	Colter Andrew, farmer	w qr 6, 11	M	F, O	16
796	J	Cranston Charles, farmer	w hf 8, 11	M	F, O	16
867		Craise Robert L, oil operator	n e cor 1, 12	M	F, T	13
936		Crawford David, farmer	e qr 12, 12	M	F, Jt O	11
937	J	Crawford Thomas, farmer	e qr 12, 12	M	F, Jt O	11
941	J	Crockard William, farmer	e hf 13, 12	M	F, Jt O	9
928	J	Crockard Clarence, farmer	s pt w hf 10, 12	M	F, O	11
929		Crosbie Gilbert, farmer	n pt w hf 10, 12	M	F, O	11
930	J	Crosbie Aylmer, farmer	n pt w hf 10, 12	M	F, Jt O	11
826	J	DeGursie Francis, farmer	w hf 15, 11	M	F, O	8
825		DeGursie Peter, farmer	w hf 15, 11	M	F, Jt O	8

TOWNSHIP OF MOORE.

No. ON ROLL	Juror	NAME AND OCCUPATION.	LOT, CONCESSION OR STREET.	Owner Tenant M. F.	P. O. Address
939	J	Deer Frank, farmer	w hf s hf 12, 12	M F, Jt O	9
938	J	Dicer James, farmer	w hf e hf 12, 12	M F, Jt O	9
786	J	Duncan Joseph, farmer	w hf e hf 4, 11	M F, O	16
787	J	Duncan Robert, farmer	w hf 4, 11	M F, O	16
776	J	Duncan David, farmer	s hf n hf 1, 11	M F, O	13
878	J	Dundas John, farmer	pt n qr-1, 12	M F, T	11
914		Elliott William, farmer	e hf 8, 12	M F, Jt O	11
915	J	Elliott Arthur W, farmer	e hf 8, 12	M F, Jt O	11
909	J	Elliott John M, farmer	w hf 6, 12	M F, O	11
715	J	Fleck Alfred, farmer	w hf 8, 10	M F, O	16
734	J	Fleck Charles M, farmer	e hf 15, 10	M F, O	8
735	J	Fleck Robert, farmer	w hf 15, 10	M F, O	8
790	J	Font Walter, farmer	e qr 6, 11	M F, O	16
821	J	Ford William, farmer	n hf 14, 11	M F, Jt O	8
822	J	Ford William J, farmer	n hf 14, 11	M F, Jt O	8
724	J	Ford John, farmer	cen 12, 10	M F, O	8
953	J	Freeman James B, farmer	w hf 15, 12	M F, O	9
698	J	Glover James, farmer	w qr 4, 10	M F, Jt O	13
699	J	Glover Fred, farmer	w qr 4, 10	M F, Jt O	13
720	J	Goodall James, farmer	cen-11, 10	M F, O	16
806	J	Goodall John, farmer	w hf e hf 11, 11	M F, O	16
690	J	Hair Robert, farmer	w hf 2, 10	M F, O	16
708	J	Heal Robert, farmer	e hf 7, 10	M F, Jt O	16
709	J	Heal John, farmer	e hf 7, 10	M F, Jt O	16
890	J	Hayland John, farmer	w hf 2, 12	M F, T	11
891	J	Hayland William, farmer	w hf 2, 12	M F, Jt T	11
891	J	Hodgins George, farmer	w hf 1, 12	M F, O	11
932	J	Hodgins David, farmer	w hf 1, 12	M F, Jt O	11
883	J	Hodgins John, farmer	w hf 1, 12	M F, Jt O	11
952	J	Hossie John, farmer	w hf 15, 12	M F, O	9
902	J	Jackson Calvin, farmer	w qr 4, 12	M F, O	11
721	J	Johnston James, farmer	w qr 11, 10	M F, O	16
777	J	Kirkpatrick Newton, farmer	s hf 1, 11	M F, O	16
701	J	Kirk Alexander, farmer	s w qr 4, 10	M F, Jt O	16
912	J	Lang Alex, farmer	w hf 7, 12	M F, T	11
877	J	Lawson James, oil operator	pt w hf e hf 1, 12	M F, T	11
898	J	Leckie John, farmer	w hf 3, 12	M F, O	11
899	J	Leckie Gilbert T, farmer	w hf 3, 12	M F, Jt O	11
798	J	Leckie John W, farmer	w hf 9, 11	M F, Jt O	16
799	J	Leckie William C, farmer	w hf 9, 11	M F, Jt O	16
800	J	Leckie Herbert, farmer	w hf 9, 11	M F, Jt O	16
931	J	Leckie Gilbert, farmer	e hf 11, 12	M F, O	11
920	J	Logan Robert, farmer	e hf 9, 12	M F, Jt T	11
921	J	Logan Sanford, farmer	e hf 9, 12	M F, Jt T	11
919	J	Logan Alexander, farmer	e hf 9, 12	M F, Jt T	11
874	J	Lucas William, engineer	pt e qr 1 12	M F, T	11

both inclusive
as at Provi-

lections and

Owner Tenant M. F.	P. O. Address
--------------------------	------------------

M F, O 8
F, Jt O 16
M F, O 16
F, Jt O 16
F, Jt O 16
F, Jt O 16
F, Jt T 11
F, Jt T 11

M F, T 16
F, Jt O 9
F, Jt O 9
F, Jt O 16
F, Jt O 9
F, Jt O 9
F, Jt O 16
M F, O 12
M F, O 16
M F, O 16
F, Jt O 8
F, Jt O 8

M F, O 8
F, Jt O 8
F, Jt O 8
F, Jt O 8
M F, T 16
M F, O 16
M F, O 16
M F, T 13
F, Jt O 11
F, Jt O 11
F, Jt O 9
M F, O 11
M F, O 11
Jt O 11

M F, O 8
F, Jt O 8

No. ON ROLL	Jrnr.	NAME AND OCCUPATION.	LOT, CONCESSION OR STREET.	Owner Tenant M. F.	P. O. Address
942		Maitland James, farmer	w hf e hf 13, 12	M F, Jt O	9
943	J	Maitland Robert J. farmer	e hf w hf 13, 12	M F, Jt O	8
813		Maitland John D. farmer	w hf e hf 13, 11	M F, Jt O	8
814	J	Maitland David, farmer	w hf e hf 13, 11	M F, Jt O	8
815	J	Maitland Neal, farmer	w hf e hf 13, 11	M F, Jt O	8
816	J	Maitland Andrew, farmer	w hf e hf 13, 11	M F, Jt O	8
817		Maitland James, farmer	w hf e hf 13, 11	M F, Jt O	9
945	J	Maitland Robert, farmer	w qr 13, 12,	M F, Jt O	9
693	J	Mitchell Francis farmer	n w qr 3, 10	M F, Jt O	16
694	J	Mitchell John, farmer	n w qr 3, 10	M F, Jt O	16
692	J	Morrison Robert, farmer	n e qr 3, 10	M F, O	16
689	J	McComb Henry, farmer	e hf 2, 10	M F, O	16
710	J	McGillivray Arch, farmer	w hf 7, 10	M F, Jt O	16
711	J	McGillivray Donald, farmer	w hf 7, 10	M F, Jt O	16
726	J	McGillivray Angus, farmer	w hf 13, 10	M F, Jt O	8
727	J	McGillivray Duncan, farmer	w hf 13, 10	M F, Jt O	8
725	J	McLaren John, farmer	e hf 13, 10	M F, O	8
812	J	McLaren Lachlan	e qr 13, 11	M F, O	8
618	J	McLean Duncan, farmer	s hf 3, 10	M T, M F	8
810	J	McLennan Joseph, farmer	w 2 12, 11	M F, Jt O	16
811	J	McLennan Daniel, farmer	w 2 12, 11	M F, Jt O	16
884	J	McLellan Donald, farmer	e hf 2, 12	M F, Jt O	11
885	J	McLellan Malcolm, farmer	e qr 3, 12	M F, Jt O	11
886	J	McLellan Donald jr, farmer	e qr 3, 12	M F, Jt O	11
887	J	McLellan Peter, farmer	e hf 2, 12	M F, Jt O	11
888	J	McLellan Archibald, farmer	e hf 2, 12	M F, Jt O	11
900	J	McLellan James, farmer	e qr 4, 12	M F, O	11
995	J	McMahon Frederick, farmer	w hf 5, 12	M F, O	11
904	J	McMahon Alfred A, farmer	e hf 5, 12	M F, O	11
923		McMichen Hugh, farmer	n w qr 9, 12	M F, Jt O	11
924	r	McMichen E H, farmer	n w qr 9, 12	M F, Jt O	11
696	J	Norwood James, farmer	e hf 4, 10	M F, O	16
697	J	Norwood Jas M, farmer	e hf 4, 10	M F, Jt O	16
819	J	Neal Robert, farmer	w hf 13, 11	M F, O	8
889	J	Oxenham Wm, oil operator	w hf 2, 12	M F, T	11
728	J	Park Joseph, farmer	e qr 14, 10	M F, T	8
947	J	Park James, farmer	e hf 14, 12	M F, O	11
932		Patten Thomas, farmer	s pt n w cor 11, 12	M F, O	11
875	J	Rainsberry James, farmer	w hf e hf 1, 12	M F, O	11
876	J	Rainsberry Richard, farmer	n qr 1, 11	M F, O	11
901	J	Rainsberry Walter, farmer	cen 4, 12	M F, O	11
780	J	Rankin Hiram, farmer	w hf 2, 11	M F, Jt T	16
781		Rankin Stephen, farmer	w hf 2, 11	M F, Jt T	16
797		Robertson William, farmer	e hf 9, 11	M F, O	16
920	J	Robinson Thomas, farmer	e hf 10, 12	M F, O	11
775	J	Ross Charles, farmer	s hf n hf 1, 11	M F, T	16
691	J	Saunders Albert, farmer	w hf 2, 10	M F, Jt O	16
794	J	Sim Alex, farmer	e hf 8, 11	M F, T	16

TOWNSHIP OF MOORE.

No. on Roll	Junior	NAME AND OCCUPATION.	LOT, CONCESSION OR STREET.	Owner Tenant M. F.	P. O. Address
791	J	Sinclair John W. farmer	w hf e hf 6, 11	M F, Jt O	16
792	J	Sinclair James, farmer	w hf e hf 6, 11	M F, Jt O	16
818	J	Smith Joseph, farmer	w hf 13, 11	M F, T	8
933	J	Smith Wm J, blacksmith	pt n e qr 11, 12	M F, O	11
934	J	Smith Samuel R, blacksmith	pt n e qr 11, 12	M F, Jt O	11
705	J	Sykes Walker, farmer	n w qr 6, 10	M F, O	16
716	J	Thornton Edwin, farmer	w hf 9, 10	M F, O	16
872	J	Watson Edward, oil operator	n hf e qr 1, 12	M F, T	11
704	J	Windover Charles, farmer	e hf 6, 10	M F, Jt O	16
706	J	Windover Ira, farmer	s w qr 6, 10	M F, Jt O	16
707	J	Windover Milton, farmer	s w qr 6, 10	M F, Jt O	16
808	J	Wray William J	w hf 11, 11	M F, O	16
803	J	Wray William, farmer	w hf 10, 11	M F, Jt O	16
804	J	Wray Joseph, farmer	w hf 10, 11	M F, Jt O	16
805	J	Wray Frederick, farmer	e qr 11, 10	M F, Jt O	16
806	J	Wray Frank, farmer	e qr 11, 11	M F, Jt O	16
685	J	Wright David, farmer	1, 10	M F, T	16
686	J	Wright Daniel, farmer	1, 10	M F, Jt T	16
687	J	Wright George, farmer	1, 10	M F, Jt T	16
785	J	Wright John, farmer	e qr 4, 11	M F, O	16
911	J	Woolsey Geo, oil operator	e qr 7, 12	M F, O Copleston	
893	J	Young Philmore, engineer	w hf e hf 3, 12	M F, T	11
918	J	Young David, farmer	w hf 8, 12	M F, O	11

PART NO. II.—Persons entitled to Vote at Municipal Elections only.

712	Boyle Annie E, widow	e hf 8, 10	Jt O	16
865	Corey B P, oil operator	pt 3, 12	Tenant	13
894	Corey Harrison, oil operator	pt cen 3, 12	Jt O	13
789	Dawson Robert, farmer	5, 11	O	13
916	Elliot Clara, spinster	e hf 8, 12	Jt O	11
917	Elliott M Grace, spinster	e hf 8 12	Jt O	11
936	Garvey M C Mrs, widow	s w qr 9, 12	O	14
688	Goodison John, mechanic	1, 10	O	14
795	Joyce James, farmer	w hf 7 e hf 8, 11	O	13
870	Kenny Randal, merchant	pt n hf e hf 1, 12	Jt T	14
700	Kirk Margaret, widow	s w qr 4, 10	Jt O	16
934	Leckie Catherine, widow	w hf 11, 12	Jt O	11
944	Maitland Elizabeth, widow	w qr 13, 12	Jt O	11

No. on Roll	Juror.	NAME AND OCCUPATION	LOT, CONCESSION OR STREET.	Owner Tenant M. F.	P. O. Address
871		Mathison George, customs	pt n hf e qr 4, 12	Jt T	14
913		Milne David, merchant	w hf 7, 12	O	14
908		McLaren Donald, gentleman	e hf 6, 12	O	14
809		McLennan Elizabeth, widow	w q 12, 11	Jt O	16
722		Pigot John, gentleman	e hf 9, 12	O London	
946		Parks Rachael, widow	e hf 14, 12	Jt O	9
869		Rainsberry Edward, farmer	pt e qr 1, 12	Jt O	11
892		Rainsberry John, gentleman	w hf 2, 12	O	14
868		Rainsberry Nicholas, farmer	pt e qr 1, 12	Jt O	11
779		Taylor Peter, farmer	e hf 2, 11	O	14
940		Webster Jane, widow	w hf 12, 12	O	9

PART NO. III.—Persons entitled to Vote at Elections to the Legislative Assembly only.

927		Daley Michael, farmer	e hf 10, 12	M F	11
801		Darroch William, laborer	10, 11	M F	16
900		Johnston Thomas, laborer	w hf 7, 12	M F	11
873		Keen Charles, laborer	1, 12	M F	11
903		Lindsay Norman, laborer	w qr 4, 12	M F	11
802		Mitland Andrew, gentleman	9, 11,	M F	16
879		Preston Richard, laborer	1, 12	M F	11
897		Thompson Walter, laborer	3, 12	M F	11
880		Wicks Frank, laborer	1, 12	M F	11
896		Young James, farmer	3, 12	M F	11

in t
and
6 a

El

No
Ro

153

20

20

6

146

146

1

157

149

1438

1577

16

18

19

20

1506

314

1548

1446

1438

1546

1511

1578

1544

67

69

65

222

3 15

295

1556

311

287

1522

74

25

12

11

1497

1565

Polling Sub-division No. 7.

POLLING SUB-DIVISION NO. 7.—Comprising lots 1 to 6 both inclusive in the 1st, 2nd and 3rd Concessions and lots 1 to 9 inclusive in the 4th concession, and lots 1 to 12 inclusive in the 5th concession, and village of Bridgen, and a qt 6 and 7, con 6. Polling place, Hall at Bridgen.

PART NO. I.—Persons entitled to Vote at both Municipal Elections and Elections to the Legislative Assembly.

No. ON ROLL	Juror	NAME AND OCCUPATION.	LOT, CONCESSION OR STREET.	Owner Tenant M. F.	P. O. Address
1537		Aitken Willham, engineer	1. 2 Haynes Sy, Bridgen	M F, O	2
302		Anderson Martin, farmer	5, 5	M F, H	2
202	J.	Andrews John, farmer	e hf 2, 4	M F, O	2
66	J.	Armstrong George H, farmer	s pt 1, 2	M F, O	2
1464	J.	Armstrong John, farmer	7 Bo's Sy, Bridgen	M F, O	2
1465	J.	Armstrong Arth, accountant	27 Lucas and Leacock Sy	M F, O	2
10	J.	Arnold James, farmer	n w qr 2, 1	M F, O	2
1573	J.	Baker George, butcher	32 Lucas and Leacock Sy	M F, O	2
1491		Barnby R H, clergyman	56, 57 Boswell's Sy	M F, T	2
1438	J.	Battram James, baker	2, Boswell's Sy	M F, O	2
1577		Battram Thomas H, laborer	44 Lucas and Leacock Sy	M F, O	2
16	J.	Bird John D, farmer	e hf 5, 1	M F, O	2
18		Bird John sr, farmer	w hf 5, 1	M F, Jt O	2
19	J.	Bird John jr, farmer	w hf 5, 1	M F, Jt O	2
20	J.	Bird James, farmer	w hf 5, 1	M F, Jt O	2
1506		Blackie Alex, carpenter	94, 95 Bo's Sy	M F, O	2
314	J.	Blackman Thomas, farmer	w hf 12, 5	M F, O	2
1548	J.	Bowen Henry, shoemaker	e hf 76, 77, Boswell's Sy	M F, O	2
1446		Boyce James, saddler	5, 6 Lucas & Leacock Sy	M F, T	2
1438		Boyd William, implem't ag't	7 Duncan's Sy	M F, T	2
1546		Boyington William, laborer	35 Boswell's Sy	M F, O	2
1511		Britton George, laborer	saw mill lot pt 7, 5	M F, T	2
1578		Britton Samuel, laborer	e hf n e qr F dy lot	M F, T	2
1544	J.	Brown John M, miller	e pt n pt 1, 2	M F, O	2
67	J.	Brown Neal, farmer	w pt n pt 1, 2	M F, O	2
69	J.	Brown William J, farmer	e hf 2, 2	M F, O	2
65	J.	Brown David T, miller	n w qr 1, 2	M F, O	2
222	J.	Brown Robert M, miller	8, 4	M F, O	2
315		Brown Charles, speculator	e hf 8, 5	M F, O Klondyke	2
295		Brown Frederick, farmer	pt s hf 6, 5	T, M F	2
1556	J.	Brown Bruce, merchant	15 Lucas & Leacock Sy	M F, O	2
311		Brown Robert, farmer	n hf 10, 5	M F, O	2
287		Brown Robert G, farmer	e hf 3, 5	M F, O	2
1522		Brown Gilbert, laborer	9, 10 n Jydenham ave	M F, T	2
74	J.	Buchanan Dougald, farmer	w hf 5, 2	M F, O	2
25	J.	Bullock Jonathan, farmer	w hf s w qr 2, 1	M F, O	2
12		Bullock James, farmer	n hf e hf 3, 1	M F, T	2
11	J.	Bullock William, farmer	n hf e hf 3, 1	M F, O	2
1497		Capes Thomas, laborer	67 Boswell's Sy	M F, O	2
1563		Campbell James, laborer	s hf 11, 12, 13 L & L Sy	M F, O	2

No. ON ROLL	Juror	NAME AND OCCUPATION.	LOT, CONCESSION OR STREET.	Owner Tenant M. F.	P. O. Add'rs
1561	J	Cannon George, drayman	e s 9, 10 Duncan's Sy	M F, O	2
1593		Carpenter Nelson, engineer	s hf 49, 50 L & L Sy	M F, O	2
1535		Carter William C. laborer	4, 5 blk A Hayne's Sy	M F, T	2
6	J	Carter James, farmer	n e pt 2, 1	M F, O	2
1574		Colborn Robert, painter	34 Bo's Sy	M F, T	2
1588	J	Colborn William H. painter	pt s w qr 6, 5	M F, O	2
1452		Colwell R, tailor	17 Lucas & Leacock Sy	M F, O	2
1467	J	Colborn Philip, tinsmith	s hf 4 Duncan Sy	M F, O	2
1489	J	Colton J B, teacher	54 Bo's Sy	M F, T	2
1448	J	Colver Orlando, druggist	8 Boswell's Sy	M F, T	2
1472	J	Crawford Wm H, tailor	16 Lucas & Leacock's Sy	M F, O	2
1492		Cunningham Jno, gentleman	68 Boswell's Sy	M F, O	2
1520		Dawson Ab, gentleman	3 and e hf 4 Hayne's Sy	M F, O	2
73		Duncan Wm, farmer	e hf 5, 2	M F, O	2
1591		Duncan Peter, agent	pt s w qr 6, 5	M F, Jt O	2
209	J	Duffy Erastus, merchant	n hf 6, 4	M F, O	2
223	J	Douglas William, farmer	8, 4	M F, T	2
203		Edwards John, farmer	e qr 3, 4	M F, O	2
204	J	Edwards Charles, farmer	w hf e hf 3, 4	M F, O	2
207		Edwards William, farmer	s hf 4, 4	M F, O	2
1580	J	Ettles John, carpenter	w hf n e qr, foundry lot	M F, O	2
1554		Ferguson Malcolm, printer	s hf 6, Duncan Sy	M F, O	2
1440		Fisher Albert J, physician	4 Boswell's Sy	M F, O	2
1564		Fisher Donald, grain buyer	9, 10 Lucas & Leacock Sy	T, M F	2
1576		Fitchell James, laborer	29, 30, 31, L & L Sy	M F, O	2
1541		Germain James, carpenter	36 Boswell's Sy	T, M F	2
1455	J	Gibson John M, blacksmith	49, 50 Boswell's Sy	M F, Jt O	2
1456	J	Gibson James, carpenter	49, 50 Boswell's Sy	M F, Jt O	2
201		Good William, farmer	n qr 1, 4	M F, O	2
293		Grant John, farmer	n hf 7, 5	M F, O	2
1513		Grant James, farmer	e pt s hf 7, 5	M F, O	2
1502	J	Grimes Jno F, sta agt, M C R	75 w hf 76 Boswell's Sv	M F, O	2
1532	J	Hales Hiram, brickmaker	n w pt s hf 7, 5	M F, Jt O	2
1533	J	Hales William H, brickm'kr	n w pt s hf 7, 5	M F, Jt O	2
1538	J	Hayne Thomas, merchant	cen pt s hf 7, 5	M F, Jt O	2
1539	J	Hayne John J, merchant	pt s hf 7, 5	M F, Jt O	2
1543	J	Hayne Rufus, laborer.	36 Bo's Sy, Bridgen M F, Jt O	Detroit	2
1451	J	Harkness Joseph, merchant	60, 61 Boswell's Sy	M F, Jt O	2
1450	J	Harkness A S, merchant	60, 61 Bo's Sy	M F, Jt O	2
1501		Hayward Thos, laborer	74 Boswell Sy	M F, O	2
1481	J	Heal Richard, agent	45, 46 Bo's Sy	M F, O	2
1303	J	Hoskins James, farmer	5, 5	M F, O	2
197	J	Hossie George, farmer	s qr 1, 4	M F, O	2
1527	J	Hume Robt M, grain buyer	13, 14 Blk E, Haynes Sy	M F, O	2
15		Hunt John E, farmer	n qr 4, 1	M F, O	1
1485		James Charles, laborer	40 Bo's Sy	M F, T	2
280	J	Johnston Richard, farmer	e hf 1, 5	M F, O	2
289	J	Johnston D S, farmer	e hf 4, 5	M F, O	2

TOWNSHIP OF MOORE.

31

Owner Tenant M. F.	P. O.	Add'n	No. ON ROLL	Jurat	NAME AND OCCUPATION.	LOT, CONCESSION OR STREET.	Owner Tenant M. F.	P. O.	Add'n
M. F. O		2	288	J	Johnston John, farmer	w hf 3, 5	M. F. O		2
M. F. O		2	299	J	Johnston Geo, farmer	w hf 4, 5	M. F. O		2
M. F. T		2	1480	J	Johnston J. V S	47 Boswell's Sy	M. F. O		2
M. F. O		2	1457	J	Johnston Foster, blacksmith	78 Boswell's Sy	M. F. O		2
M. F. T		2	1479	J	Leacock Thos jr, blacksmith	p s w qr 6, 5	M. F. T		2
M. F. O		2	1478		Leacock Thos sr, agent	66 Bo's Sy	M. F. O		2
M. F. O		2	1587	J	Leacock Henry J, tp treas	23, 24, 25, 26, L & L Sy	M. F. O		2
M. F. T		2	1559		Lillywhite Henry, jeweler	9, 10 Duncan Sy	M. F. T		2
M. F. T		2	1460		Limburner Chas, gentleman	54 Boswell's Sy	M. F. O		2
M. F. O		2	1494		Long Willam, engineer	34 L & L Sy	M. F. T		2
			1483		Maguire William, barber	43 Boswell's Sy	M. F. O		2
M. F. O		2	1515	J	Manley William, farmer	e hf w hf 7, 4	M. F. Jt O		2
M. F. O		2	21	J	Mason Joseph, farmer	s hf n hf 6, 1	M. F. O		2
F. Jt O		2	1531		May Henry, laborer,	pt s hf 7, 5	M. F. O		2
M. F. O		2	1524		Mills William, carpenter	11, 12 blk E Hayne's Sy	M. F. O		2
M. F. T		2	8	J	Misner Lima, farmer	s e qr 3, 1	M. F. O		2
			1482	J	Munday Hugh, laborer	44 Boswell's Sy	M. F. O		2
			294	J	Monroe Thos H, merchant	pt s qr 6, 5	M. F. T		2
M. F. O		2	1571		McCatty John, gentleman	18 L & L Sy, other prop	M. F. O		2
M. F. O		2	72	J	McCauley Alex, farmer	4, 2	M. F. T		2
M. F. O		2	313	J	McDonald Robert, farmer	w hf 11, 5	M. F. O		2
			1469		McDonald Hugh, clerk	12 Duncan Sy	M. F. Jt O		2
M. F. O		2	1584		McDonald John sawyer	50 L & L Sy	M. F. Jt O		2
M. F. O		2	1585		McDonald William, laborer	w hf 49, 50, L & L Sy	M. F. Jt O		2
T, M. F.		2	1442	J	McDonald David, merchant	s hf 5 Bo's Sy, op	M. F. Jt O		2
M. F. O		2	70	J	McFarlane Alex, farmer	w hf 2, 2	M. F. O		2
			304	J	McIntosh John, farmer	s e pt 6, 5	M. F. O		2
			140	J	McKenzie John S	e hf 4, 3	M. F. O		2
T, M. F.		2	297	J	McKenzie Peter A, farmer	w hf 8, 5	M. F. Jt O		2
F, Jt O		2	1517		McKee John C, clergyman	1, 2, Hayne's Sy	M. F. Jt O		2
F, Jt O		2	1569	J	McLean John F, farmer	n e pt s hf 6, 5	M. F. O		2
M. F. O		2	300	J	Nesbit Archibald, farmer	s e cor 5, 5; s w qr 4, 6	M. F. O		2
M. F. O		2	1519		Newell John, weaver	1, 2 Blk C, Hayne's Sy	M. F. O		2
M. F. O		2	1534		Newton Andrew, tailor	15 blk E. Hayne's Sy	T, M. F.		2
M. F. O		2	1435		Nelson John, cabinetmaker	85 Boswell's Sy	T, M. F.		2
F, Jt O		2	1453	J	Nicholson R J, saddle	s hf 10, Boswell's Sy	M. F. O		2
F, Jt O		2	1551	J	Nixon Thomas, imp agent	pt s w cor 6, 5	M. F. O		2
F, Jt O		2	1562		Norwood James, mason	pt 3, 4, L & L Sy	M. F. O		2
Jt O Detroit		2	9	J	Olds George, farmer	n hf w hf 3, 1	M. F. O		2
F, Jt O		2	1575		Osborne Richard, laborer	35 L & L Sy	M. F. O		2
M. F. O		2	215	J	Parr Charles, farmer	s hf 6, 4	M. F. Jt O		2
M. F. O		2	214	J	Parr David, butcher	s hf 6, 4	M. F. Jt O		2
M. F. O		2	212		Parr Frederick, farmer	s hf 6, 4	M. F. Jt O		2
M. F. O		2	1473	J	Parr Robert, liveryman	3 Duncan's Sy	M. F. O		2
M. F. O		1	213	J	Parr William G, butcher	s hf 6, 4 and s qr 7, 2	M. F. Jt O		2
			1484		Pollard Alfred, miller	42 Boswell's Sy	M. F. T		2
			292	J	Pollard Thos, farmer	n hf 6, 5	M. F. Jt O		2
M. F. T		2	291	J	Pollard Simeon, farmer	n hf 6, 5	M. F. Jt O		2

No. ON ROLL	Juror	NAME AND OCCUPATION.	LOT, CONCESSION OR STREET.	Owner Tenant M. F.	P. O. Address
224	J	Potter George, farmer	e hf 9, 4	M F, O	2
225	J	Potter Joseph, farmer	w hf 9, 4	M F, O	2
198	J	Rattray Peter, farmer	cen 1, 4	M F, Jt O	2
199	J	Rattray Gordon, farmer	cen 1, 4	M F, Jt O	2
1508	J	Regan John, laborer	pt s hf 7, 5	M F, O	2
1581	J	Rewbotham Wm, gardner	47, 48 L & L Sy	M F, O	2
1586	J	Rogers Thomas, laborer	2; L & L Sy	M F, T	2
312	J	Rogers George, farmer	e hf 11, 5	M F, T	2
1536	J	Rose Joseph, engineer	4, 5 blk A, Hayne's Sy	M F, O	14
1547	J	Scott Wm jr, laborer	34 Boswell Sy	M F, O	2
283	J	Scott Henry, farmer	e hf 2, 5	M F, O	2
290	J	Scott John, farmer	n pt w hf 2, 5	M F, O	2
286	J	Scott Andrew, farmer	s pt w hf 2, 5	M F, O	2
284	J	Scott Gideon, farmer	e hf 2, 5	M F, Jt O	2
1558	J	Soouler Benjamin R. tailor	9, 10 Duncan Sy	T M, F	2
1461	J	Seager F R, physician	pt 13, 14, 15 Bo's Sy	M F, Jt O	2
1462	J	Seager Chas A, clerk	18, 19 Boswell's Sy	M F, Jt O	2
1454	J	Selman Jas F, agent	n hf 10 Boswell's Sy	M F, O	2
206	J	Shaw Donald, farmer	w hf 3, 4	M F, O	2
282	J	Shaw James, farmer	w hf 1, 5	M F, O	2
1521	J	Shaw Jas A, carpenter	2 e pt 3 blk D, Haynes Sy	M F, O	2
1528	J	Shaw Donald P, carpenter	6 blk e, Hayne's Sy	M F, O	2
1549	J	Shaw Robt G, merchant	31, 32 Boswell's Sy	M F, O	2
210	J	Shaw Joel, hotelkeeper	n e cor 7, 4	M F, O	2
13	J	Sinclair Thomas, farmer	e hf s 2 4, 1	M F, O	2
14	J	Sinclair Laurence, farmer	w hf s 2 4, 1	M F, O	2
1471	J	Sinclair C W, clerk	16 L & L Sy	M F, T	2
1555	J	Smith Alex, shoemaker	n hf 6 Duncan Sy	M F, O	2
1579	J	Smith Thos C, laborer	n e cor foundry lot	M F, O	2
1526	J	Smith Walter, laborer	5, 6 blk D, Haynes Sy	M F, Jt O	2
1525	J	Smith John, laborer	5, 6 blk D, Haynes Sy	M F, Jt O	2
1507	J	Smith Thomas, laborer	96, 97 Boswell's Sy	M F, O	2
1505	J	Smith Wm H, blacksmith	93 Boswell's Sy	M F, O	2
1459	J	Spooner Geo E, hotelkeeper	12, 13, 14 Boswell's Sy	M F, O	2
219	J	South Eli, farmer	n hf 9, 5; w hf e hf 7, 4	M F, O	2
7	J	Stamm Wm, farmer	s 2 e hf 2, 1	M F, O	2
5	J	Stamm David, laborer	n w qr 1, 1	M F, T	2
208	J	Staples William, farmer	n hf 4, 4	M F, O	2
135	J	Stephens Lewis, farmer	5, 6, 3	M F, Jt O	2
134	J	Stephens Byron, farmer	2, 3, 3	M F, Jt O	2
1496	J	Stewart Robert, laborer	63 Boswell's Sy	M F, O	2
1479	J	Sutton Henry, laborer	48 Boswell's Sy	M F, O	2
29	J	Taylor Peter, farmer	n qr 6, 1	M F, O	2
1	J	Tederington J W, farmer	s hf 1, 1	M F, O	3
220	J	Tye Frank, engineer	w qr 7, 4	M F, O	2
1550	J	Wade Arthur F, bank clerk	pt foundry lot	T, M F	2
306	J	Walker Allen, farmer	s e qr 9, 5 & other prop	M F, O	2
1506	J	Walker Salvanus, teamster	9, 10 Duncan's Sy	T, M F	2
1553	J	Ward W J, banker	n hf 1, 2 Duncan Sy	M F, O	2
1487	J	Watson John, laborer	52 Boswell's Sy	M F, O	2
71	J	Watson John C, farmer	w hf 3, 2	M F, O	2
1476	J	Watson Jeremiah, laborer	21, 22 Boswell's Sy	M F, O	2

TOWNSHIP OF MOORE

23

No. on Roll	Junior	NAME AND OCCUPATION.	LOT, CONCESSION OR STREET.	Owner Tenant M. F.	P. O. Address
365		Welsh James, farmer	s qr 6, 6	M F, O	2
1447	J	White James, carpenter	5, 6 L & L Sy	M F, O	14
22	J	Wilson Andrew, farmer	n hf s hf 6, 1	M F, O	2
1498	J	Wilson Charles, laborer	68 Boswell's Sy	T, M F	2
1433	J	Windsor Henry, cabinetmk'r	s pt 1 Bo's sy	M F, Jt O	2
1434	J	Windsor Carlos, cabinetmk'r	85 Boswell's Sy	M F, Jt O	2
301	J	Woodwark Jam-s, carp-nter	pt s hf 6, 5	M F, O	2
141	J	Young George, farmer	w hf 4, 3	M F, Jt O	2
122	J	Young James, farmer	w hf 4, 3	M F, Jt O	2

PART NO. II.—Persons entitled to vote at Municipal Elections only.

M F, O	2	5	Adams Elizabeth, widow	n w qr 1, 1	O	2
M F, O	2	298	Boyington Susan, widow	s e pt 6, 5 and 62 Bo's by	O, T	2
M F, O	2	307	Brown Janet, widow	s w qr 9, 5	Jt O	2
F, Jt O	2	308	Brown Annie, spinster	s w qr 9, 5	Jt O	2
T, M, F	2	309	Brown Margaret, spinster	s hf 10, 5	O	2
F, Jt O	2	310	Brown Margaret, widow	n qr 10, 4	O	2
M F, O	2	2	Croft Richard, farmer	n e qr 1, 1	Jt O	3
M F, O	2	3	Croft Elizabeth, widow	n e qr 1, 1	Jt O	3
M F, O	2	1403	Crocker J, merchant	s hf 5, Boswell's Sy	O St Thomas	
M F, O	2	1493	Cunningham Sarah, spinster	59 Boswell's Sy	O	2
M F, O	2	1495	Cunningham Jane, spinster	34 L & L Sy	O	2
M F, O	2	1590	Duncan Jane, widow	pt s w qr 6, 5	Jt O	2
M F, O	2	1572	Ellis Mary, widow	19 L & L Sy	O	2
M F, T	2	1523	Fader Eliza, widow	9, 10 blk F. Haynes Sy	O	3
M F, O	2	139	Firman Walter, farmer	6, 2	Jt O	3
M F, O	2	1504	Greer Christina, widow	89's hf 90 Boswell's Sy	O	2
F, Jt O	2	1512	Hagle Mary A. widow	64, 65 Bo's Sy	O	2
F, Jt O	2	1503	Hartwell Mary, widow	8, 87 Bo's Sy	O	2
M F, O	2	1552	Humphrey Mary, spinster	s hf 1 Duncan Sy	O	2
M F, O	2	205	Knight Catherine, widow	w hf 2, 4	O	13
M F, O	2	1530	May Margaret, widow	pt s hf 7, 5	O	2
M F, O	2	1500	Moore Harriett, widow	72, 73 Boswell's Sy	O	2
F, Jt O	2	1470	McDonald Maggie, spinster	12 Duncan Sy	Jt O	2
M F, O	2	296	McKenzie Betsy, widow	w hf 8, 5	Jt O	2
M F, O	2	1563	McIntyre Margaret, widow	21 L & L Sy	O Bay City, Mich	
M F, O	2	281	O'Donnell N, lumberman	cen pt 1, 5	Jt O Jersey City	
M F, O	3	282	O'Donnell H, lumberman	cen pt 1, 5	Jt O Jersey City	
M F, O	2	1463	Shepherd Jacob, farmer	3 Boswell's Sy	O Wheeler	
T, M F	2	136	Stephens Emma, spinster	6, 3	Jt O	2
M F, O	2	137	Stephens Elenor E, spinster	1, 3	Jt O	2
T, M F	2	1589	Stonehouse Sarah, widow	s pt w qr 6, 5	O	2
M F, O	2	23	Taylor Alek, farmer	e hf s w qr 6, 1	O	3

No. on Roll	Juror	NAME AND OCCUPATION.	LOT, CONCESSION OR STREET.	Owner Tenant M. F.	P. O. Add'n
14		Taylor James, farmer	w hf s w qr 6, 1	O	3
200		Taylor George, carpenter	e qr 3, 2	O	14
1444		Telford Laura, widow	53 Bo's 8y	Jt O	2
1445		Telford Olive, spinster	53 Boswell's sy	Jt O	2
449		Wynn John B, druggist	8 Boswell's sy	O	Leamington
217		Young Robert E, clerk	e qr 7, 4	Jt O	Detroit
218		Young William B, clerk	e qr 7, 4	Jt O	Detroit

PART NO. III.—Persons entitled to Vote at Elections to the Legislative Assembly only.

221		Bechtel Jesse, laborer	n w cor 7, 4	M F	2
1499		Black Hugh, laborer	71 Boswell's sy	M F	2
1460		Burton John, laborer	12 Boswell's sy	M F	2
1530		Bennett Chauncy, sawyer	pt s hf 7, 5	M F	2
1475		Croot J T, tailor	4 D's sy	M F	2
68		Dodds James, laborer	1, 2	M F	2
1474		Donovan John R. tailor	4 Duncan's sy	M F	2
143		Dreen Robert, laborer	w hf 4, 3	M F	2
285		Enright John, laborer	e hf 2, 5	M F	2
211		Mason William, bartender	Queen's Hotel Bridgen	M F	2
4		Murphy Thomas, farmer	n e qr 1, 1	M F	2
1592		Nesbit Charles, laborer	2 Lucas & L sy	M F	2
1593		Nesbit William, laborer	2 Lucas & L sy	M F	2
1509		Regan William, laborer	pt 7, 5	M F	2
1582		Rewbotham Berkly, laborer	48 Lucas & L sy	M F	2
1510		Regan Edward, laborer	pt 7, 5	M F	2
1437		Smith John, laborer	1 Bo's sy	M F	2
1441		Smith Ernest, laborer	4 Boswell's sy	M F	2
1557		Stokes Henry, laborer	8 Duncan's sy	M F	2
1436		Sutton James, cabinet mk'r	1 Boswell's sy	M F	2

No. ON ROLL	Juror.	NAME AND OCCUPATION.	LOT, CONCESSION OR STREET.	Owner Tenant M. F.	P. U.	Add'g.
554	J	Garrett Hugh, farmer	w hf 13, 8	M F, Jt O		6
337	J	Gauld Peter, farmer	n hf 9, 6	M F, O		2
455		Gauld William, farmer	w hf 9, 7	M F, Jt O		2
456	J	Gauld John, farmer	w hf 9, 7	M F, Jt O		2
643	J	Goodall Andrew R, farmer	w hf 14, 9	M F, O		6
537	J	Hastings Warren, farmer	w hf 8, 8	M F, Jt O		6
538	J	Hastings Perry, farmer	w hf 8, 8	M F, Jt O		6
539	J	Hastings Walter, farmer	w hf 8, 8	M F, Jt O		6
604	J	Holmes George, farmer	w hf 2, 8	M F, Jt O		12
605	J	Holmes Thomas, farmer	w hf 2, 9	M F, Jt O		12
606	J	Holmes John, farmer	e qr 3, 8	M F, Jt O		12
607	J	Holmes William, farmer	e qr 3, 8	M F, Jt O		12
432	J	Johnston Thomas, farmer	n hf 1, 7	M F O		12
616	J	Lieunts William, farmer	w qr 6, 9	M F, O		6
436		Manning John, farmer	e hf 5, 7	M F, Jt O		2
437	J	Manning John jr., farmer	e hf 5, 7	M F, Jt O		2
438	J	Manning Overton, farmer	e hf 5, 7	M F, Jt O		2
439		Manning David, farmer	w ef 5, 7	M F, Jt O		2
440	J	Manning Vinton J, farmer	w hf 5, 7	M F, Jt O		2
441	J	Manning Avrill, farmer	w hf 5, 7	M F, Jt O		2
448	J	Miller George, farmer	w qr 7, 7	M F, O		2
632	J	Miller Andrew, farmer	e hf 11, 9	M F, O		6
545	J	Miller William, farmer	e hf 11, 8	M F, O		6
528	J	Miskell John, farmer	e 2 6, 8	M F, Jt O		6
529	J	Miskell Andrew, farmer	e 2 6, 8	M F, Jt O		6
530	J	Miskell Alex, farmer	e 2 6, 8	M F, Jt O		6
531	J	Miskell William, farmer	e 2 6, 8	M F, Jt O		6
619	J	Morrison Alex, farmer	e hf 8, 9	M F, Jt O		6
620	J	Morrison John, farmer	e hf 8, 9	M F, Jt O		6
621	J	Morrison Alex H, farmer	e hf 8, 9	M F, Jt O		6
622	J	Morrison John S, farmer	w hf 8, 9	M F, O		6
541	J	McBean James, farmer	w hf 9, 8	M F, O		2
452	J	McBean John L, farmer	w hf 8, 7	M F, O		2
453	J	McBean Peter A, farmer	e hf 9, 7	M F, O		2
454	J	McBean James A, farmer	e pt 7, 7	M F, O		2
442	J	McCauley, Peter, farmer	w hf 6, 7	M F, Jt O		2
443	J	McCauley William, teamster	w hf 6, 7	M F, Jt O		2
522	J	McDermid, William, farmer	w hf e hf 3, 8	M F, O		12
366	J	McDonald James, farmer	n 2 6, 6	M F, Jt O		2
367	J	McDonald William P, farmer	n 2 6, 6	M F, Jt O		2
368	J	McDonald James jr., farmer	e hf 6, 7	M F, Jt O		2
369	J	McDonald Alex, farmer	n hf s hf 7, 6	M F, Jt O		2
532	J	McKellar John, farmer	e hf 7, 9	M F, O		6
627	J	McKellar Donald, farmer	e hf 10, 9	M F, Jt O		6
628	J	McKellar John H, farmer	s 2 w hf 9, 9	M F, Jt O		6
629	J	McKellar William, farmer	e hf 10, 9	M F, Jt O		7
523	J	McKellar Hugh, clergyman	e hf 4, 8,	M F, O	Martin Town	
533	J	McKella, James, farmer	e 2 7, 8	M F, O		6
371	J	McKenzie Frank, farmer	n hf 7, 6	M F, O		2

TOWNSHIP OF MOORE.

37

Owner tenant P. F.	P. U. Address	No. ON ROLL	Juror	NAME AND OCCUPATION	LOT, CONCESSION OR STREET.	Owner Tenant M. F.	P. U. Address
F, Jt O	6	444	J	McIntosh Alex, farmer	w pt e hf 7, 7	M F, Jt O	6
M F, O	6	617	J	McLean John L	w hf 7, 9	M F, O	6
F, Jt O	6	602	J	McNeal John, farmer	e hf 2, 9	M F, Jt O	12
F, Jt O	6	603	J	McNeal Silas, farmer	e hf 2, 9	M F, Jt O	12
M F, O	6						
		356	J	Nesbit George, farmer	n hf 3, 6	M F, O	2
F, Jt O	6	534	J	Nesbit Charles, farmer	w qr 7, 8	M F, O	6
F, Jt O	6	535	J	Nesbit David, farmer	w 1/2 e hf, 8	M F, Jt O	6
F, Jt O	6	536	J	Nesbit John, farmer	w 1/2 e hf, 8	M F, Jt O	6
F, Jt O	12						
F, Jt O	12	518	J	Postle William, farmer	s pt 1, 8	M F, Jt O	12
F, Jt O	12	519	J	Postle George, farmer	s pt 1, 8	M F, Jt O	12
F, Jt O	12	520	J	Postle Frederick, farmer	con 1, 8	M F, Jt O	12
F, Jt O	12	521	J	Postle Frank, farmer	n pt 1, 8	M F, O	12
M F O	12	599	J	Potter David, farmer	e hf 1, 9	M F, O	12
M F, O	6	524	J	Prett Charles, farmer	e hf 5, 8	M F, O	6
		525	J	Reece Joseph, farmer	w hf 5, 8	M F, Jt O	6
F, Jt O	2	526	J	Reece Thomas, farmer	w hf 5, 8	M F, Jt O	6
F, Jt O	2	527	J	Reece John, farmer	w hf 5, 8	M F, Jt O	6
F, Jt O	2	547	J	Richardson Thomas, farmer	w hf e hf 12, 8	M F, Jt O	6
F, Jt O	2	548	J	Richardson Victor, farmer	w hf e hf 12, 8	M F, Jt O	6
F, Jt O	2	434	J	Rutherford, Charles, farmer	a qr 3, 7	M F, O Oil Spring	
M F, O	2						
M F, O	6	357	J	Scott William, farmer	s e qr 4, 6	M F, Jt O	2
M F, O	6	358	J	Scott Edward, farmer	s e qr 4, 6	M F, Jt O	2
F, Jt O	6	352	J	Shaw Angus, farmer	n 1/2 3, 7	M F, O	2
F, Jt O	6	353	J	Shaw William, farmer	e 1/2 2, 6	M F, O	2
F, Jt O	6	354	J	Shaw John sr., farmer	s w qr 2, 6	M F, Jt O	2
F, Jt O	6	355	J	Shaw John jr., farmer	s w qr 2, 6	M F, Jt O	2
F, Jt O	6	615	J	Shaw Henry, farmer	5, 9	M F, O	6
F, Jt O	6	559	J	Smith James, farmer	e 1/2 15, 8	M F, O	6
F, Jt O	6	614	J	Smith Robert S, farmer	w 1/2 15, 9	M F, Jt O	6
M F, O	6	645	J	Smith David M, farmer	w 1/2 15, 9	M F, Jt O	6
		646	J	Smith Samuel J, farmer	w 1/2 15, 9	M F, Jt O	6
		542	J	South John, farmer	e hf 10, 8	M F, O	2
M F, O	2						
M F, O	2						
M F, O	2						
M F, O	2						
F, Jt O	2	435	J	Taylor Ruben, farmer	w hf 4, 7	M F, O	2
		374	J	Thompson William, farmer	s e qr 8, 6	M F, Jt O	2
		375	J	Thompson John, farmer	s e qr 8, 6	M F, Jt O	2
		372	J	Thompson Samuel, farmer	n e qr 8, 6	M F, Jt O	2
F, Jt O	2	373	J	Thompson William J, farmer	n e qr 8, 6	M F, Jt O	2
M F, O	12	625	J	Thompson Alex, farmer	w hf e hf 9, 9	M F, Jt O	6
F, Jt O	2	626	J	Thompson William, farmer	w hf e hf 9, 9	M F, Jt O	6
F, Jt O	2						
F, Jt O	2	450	J	Warren Duncan sr., farmer	e hf 8, 7	M F, Jt O	2
F, Jt O	2	451	J	Warren John, farmer	e hf 8, 7	M F, Jt O	2
M F, O	6	462	J	Warren Duncan jr., farmer	e hf 8, 7	M F, Jt O	2
F, Jt O	6	376	J	Watson James, tp clerk	s hf 9, 6	M F, Jt O	2
F, Jt O	6	379	J	Watson Chas C, farmer	s hf 9, 6	M F, Jt O	2
F, Jt O	7	639	J	Watson James, farmer	s e cor w qr 13, 9	M F, O	6
Partin Town		640	J	Watsou Joseph J, farmer	s w qr 12, 9	M F, T	6
M F, O	6	641	J	Watson William, farmer	cen pt e hf 13, 9	M F, T	6
M F, O	2						

TOWNSHIP OF MOORE.

No. on Roll	Juror.	NAME AND OCCUPATION.	LOT, CONCESSION OR STREET.	Owner Tenant M. F.	P. O. Address
631	J	Welsh John, farmer	w hf 13, 9	M F, O	6
637		White John, farmer	e hf 13, 8	M F, Jt O	6
636	J	White Robert J, farmer	e hf 13, 8	M F, Jt O	6
642	J	White Clement, farmer	e hf 14, 9	M F, O	6

PART NO. II.—Persons entitled to vote at Municipal Elections only.

608		Holmes Susan, spinster	w hf 2, 9	Jt O	12
543		King Mary, spinster	n w qr 10, 8	O	6
445		McIntosh Christina, widow	oen pt e hf 7, 7	Jt O	2
364		McNaughton John, engine'r	w hf 5, 6	O Point Edward	
359		Watson Jeremiah, armer	n e qr 4, 6	O	2
433		Wilson Thomas, farmer	w hf 2, 7	O	2

PART NO. 3.—Persons entitled to Vote at Elections to the Legislative Assembly only.

363		Allsup George, laborer	e hf 5, 6	M F	2
611		Gardner Albert, laborer	s w qr 3, 9	M F	6
370		McDonald William, laborer	n 2 6, 6	M F	2
517		McRobbie George, laborer	w hf 9, 7	M F	2
638		Sherman John, laborer	e hf 13, 9	M F	6

in
Po
El
No
Ro
2
14
10
15
8
8
157
95
226
174
174
173
38
39
40
41
35
165
166
167
168
36
37
44
152
96
75
89
155
176
100
104
148

Polling Sub-division No. 9.

POLLING SUB-DIVISION NO. 9.—Comprising lots 7 to 19 both inclusive in the 1st, 2nd and 3rd Concessions, and lots 10, 11, 12 in the 4th concession, Polling Place, Waubuno School House.

PART NO. I.—Persons entitled to Vote at both Municipal Elections and Elections to the Legislative Assembly.

No. ON ROLL	Juror	NAME AND OCCUPATION.	LOT, CONCESSION OR STREET.	Owner Tenant M. F.	P. O. Address
24	J	Blacklock John, farmer	s pt w hf 10, 1	M F O	17
144	J	Brown Daniel, farmer	e hf s # 7, 3	M F O	2
102	J	Burr Joseph, farmer	s hf w hf 18, 2	M F O	17
154	J	Burr Thomas, farmer	e hf 11, 3	M F O	17
80	J	Campbell James, farmer	e hf 9, 2	M F, Jt O	17
81	J	Campbell Dougald, farmer	e hf 9, 2	M F, Jt O	17
157	J	Capes Charles, farmer	cen 12, 3	M F, O	17
99	J	Cockburn R T, clergyman	n e cor 16, 2	M F, T	17
226		Douglas William, farmer	cen 10, 4	M F, T	2
174		Duncan Peter, farmer	s pt 19, 3	M F, Jt O	17
176	J	Duncan James, farmer	s pt 19, 3	M F, Jt O	17
173	J	Eyre Arthur	s w qr 18, 3	M F, O	17
38		Farr William, farmer	s w # 14, 1	M F, Jt O	17
39	J	Farr John, farmer	s w # 14, 1	M F, Jt O	17
40	J	Farr Philip, farmer	s w # 14, 1	M F, Jt O	17
41	J	Farr Joseph, farmer	s hf n w qr 14, 1	M F, Jt O	17
35	J	Gorton Andrew, farmer	s e qr 13, 1	M F, T	17
165	J	Gray George, farmer	14, 3	M F, Jt O	17
166	J	Gray Elgin, farmer	14, 3	M F, Jt O	17
167	J	Gray David M, farmer	n qr 16, 3	M F, O	17
168	J	Gray Alexander, farmer	s # 16, 3	M F, O	17
36	J	Hayward Joseph, farmer	n hf s w qr 13, 1	M F, Jt T	17
37	J	Hayward Charles, farmer	n e qr 14, 1	M F, Jt O	17
44	J	Hayward William, farmer	s e qr 16, 1	M F, O	17
152		Hayward Allen, farmer	n e pt 9, 10; 3	M F, O	17
96	J	Hunter John, farmer	n w qr 13, 2	M F, T	17
75	J	Huff Samuel, farmer	n hf s hf 7, 2	M F, O	2
89		Hurst John, farmer	n w qr 11, 2	M F, O	17
155	J	Hurst William J, farmer	w hf 19, 3	M F, O	17
176	J	Hutchinson Joseph, farmer	w hf 11, 3	M F, O	17
100	J	Jeffray John, farmer	w hf 15, 2	M F, O	17
104	J	Jeffray William, farmer	e hf 17, 2	M F, O	17
148	J	Lester Charles, farmer	n e qr 9, 3	M F, O	2

No. ON ROLL	Inte	NAME AND OCCUPATION.	LOT, CONCESSION OR STREET.	Owner Tenant M. F.	P. O. Add'g
149	J	Lester George, painter	n e cor 9, 3	M F, O	2
227	J	Lester John, farmer	s qr 10, 4	M F, O	2
228	J	Lester Abram, farmer	s qr 11, 4	M F, O	2
229	J	Lester Allen, farmer	cen 11, 4	M F, O	2
106	J	Little Thomas, farmer	e hf 18, 2	M F, Jt O	17
53	J	Lumley John, farmer	s e qr 19, 1	M F, Jt O Avonroy	
54	J	Lumley Charles, farmer	s e qr 19, 1	M F, Jt O Avonroy	
146	J	Magill James, farmer	s e qr 8, 3	M F, O	2
147	J	Magill William, farmer	s w qr 8, 2	M F, O	2
30	J	Mason James, farmer	n qr 9, 1	M F, Jt O	17
31	J	Mason William, farmer	n qr 9, 1	M F, Jt O	17
143	J	Mason Robert, farmer	w hf s 7, 3	M F, O	17
49	J	Miller James, farmer	e hf 11, 1	M F, Jt O	17
50	J	Miller John T, farmer	e hf 11, 1	M F, Jt O	17
91	J	Moffat William, farmer	w hf 12, 2	M F, O	17
92	J	Moffat Robert, farmer	e hf 12, 2	M F, O	17
95	J	Moore William, farmer	e 2 13, 2	M F, O	17
231	J	Munday John, farmer	s w pt 12, 4	M F, O	17
103	J	McBean William, farmer	n w qr 16, 2	M F, O	17
101	J	McBean Arthur, farmer	n e hf 16, 2	M F, O	17
169	J	McHaney William	w hf 15, 3	M F, O	17
52	J	McHardy William, farmer	e hf 18, 1	M F, O Avonroy	
97	J	Nichol George, farmer	e hf 15, 2	M F, O	17
98	J	Nichol James, farmer	w hf 15, 2	M F, T	17
158	J	Overton Mirza G, mail carrier	w qr 12, 3	M F, O	17
45	J	Pettit Freeman, farmer	s pt 12, 1	M F, T	17
77	J	Quigley William, farmer	n e qr 7, 2	M F, Jt O	2
78	J	Quigley James, farmer	n e qr 7, 2	M F, Jt O	2
156	J	Rutherford William, farmer	n hf 8, 3	M F, O	2
42	J	Scott Peter, farmer	n hf 15, 1	M F, Jt O	17
43	J	Scott George, farmer	s hf 15, 1	M F, Jt O	17
46	J	Scott Thomas, farmer	n nf 15, 16, 1	M F, Jt O	17
47	J	Scott Noble, farmer	n hf 15, 16, 1	M F, Jt O	17
48	J	Scott Thos A, farmer	n hf 15, 16, 1	M F, Jt O	17
88	J	Scott Alexander, farmer	n e qr 11, 2	M F, O	17
162	J	Scott Andrew, farmer	e hf w hf 13, 3	M F, O	17
163	J	Scott Gilbert, farmer	w qr 13, 3	M F, O	17
156	J	Sykes John, farmer	e qr 12, 3	M F, O	17
171	J	Taylor James, farmer	e 2 17, 3	M F, Jt O	17
172	J	Taylor John, farmer	e 2 17, 3	M F, Jt O	17
170	J	Taylor John, farmer	e 2 17, 3	M F, Jt O	17
51	J	Tennyson Daniel, farmer	w hf 11, 1	M F, O	17
94	J	Tice Walter, farmer	n e cor 13, 2	H, M F	17

TOWNSHIP OF MOORE.

41

No. OF ROLL	Juror.	NAME AND OCCUPATION.	LOT, CONCESSION OR STREET.	Owner Tenant M. F.	P. O. Address
105	J	Thompson John	w hf 17, 2	M F, O	17
79	J	Tueber Wm S. farmer	8, 2	M F, O	2
150	J	Turner David, farmer	n hf 8, 3	M F, T	2
153	J	Varnum Barrett, farmer	w pt 9, 10, 3	M F, O	17
33	J	Varnum D P jr., farmer	cen 9, 1	M F, O	17
32	J	Varnum D P sr., farmer	s w qr 9, 1	M F, O	17
108	J	Walton Samuel, farmer	n e qr 19, 2	M F, Jt O	7
86	J	Williams, Henry, farmer	10, 2	M F, O	17
87	J	Williams Bert, farmer	10, 2	M F, F S	17
82		Young William, farmer	w hf 9, 2	M F, Jt O	17
83	J	Young Robert, farmer	w hf 9, 2	M F, Jt O	17
84	J	Young John W, farmer	e hf 10, 1	M F, O	17
159	J	Young John, farmer	e hf 13, 3	M F, Jt O	17
160	J	Young Francis, farmer	e hf 13, 3	M F, Jt O	17
161	J	Young John J., farmer	e hf 13, 3	M F, F S	17

PART NO. II. — Persons entitled to Vote at Municipal Elections only.

224		Duncan Margaret, widow	cen 10, 4	O Detroit	
166		Hughes Eliza S, widow	w hf e hf 15, 3	O	17
230		Lester Mrs Thomas, widow	n w pt 11, 4	O	2
107		Walton A E, widow	n e qr 19, 2	Jt O	7
109		Walton Eliza, spinster	s w qr 19, 1	Jt O	7

PART NO III. — Persons entitled to vote at Elections to the Legislative Assembly only.

27		Clancy Michael, laborer	7, 1	M F	2
28		Clancy Patrick, laborer	7, 1	M F	2
164		Kent Edward, laborer	w qr 13, 3	M F	17
90		Sexton George, laborer	n w qr 11, 2	M F	17
76		Toles William, laborer	s qr 7, 2	M F	2

TOWNSHIP OF MOORE.

Total number of Jurors and Voters in Township:—

No of Polling Division	Jurors	Part 1	Part 2	Part 3	Municipal Voters	Legislative Voters	Total Votes
1	64	81	8	2	89	83	91
2	84	148	40	7	188	155	195
3	95	160	29	11	189	171	200
4	109	205	27	16	232	221	248
5	83	103	12	3	115	106	118
6	125	154	24	10	178	164	188
7	108	197	39	20	236	217	236
8	105	131	6	5	131	136	142
9	75	91	5	5	96	96	101
TOTALS	848	1270	190	79	1460	1349	1539

I, JAMES WATSON, Clerk of the Municipality of the Township of Moore, in the County of Lambton, do hereby certify that Parts 1 and 3 of the within list constitute a correct list for the year 1899 of all persons appearing by the last revised Assessment Roll of the said Municipality to be entitled to vote at Elections for members of the Legislative Assembly; and that parts 1 and 2 constitute a correct list for the said year of all persons appearing by the said roll to be entitled to vote at Municipal elections in the said Municipality; and I hereby call upon all electors to examine the said list, and if any omissions or other errors are perceived therein, to take immediate proceedings to have the said errors corrected according to law

I also certify that a copy of the above list was first posted up in my office on the 28 day of July 1899

JAMES WATSON,
Clerk of the Township of Moore.

Total
Notes
91
195
200
248
118
188
256
142
101

539

more,
within
the last
Elec-
stitute
to be
thereby
errors

office

more,

Handwritten: 10/11 83

