

**CIHM
Microfiche
Series
(Monographs)**

**ICMH
Collection de
microfiches
(monographies)**



Canadian Institute for Historical Microreproductions / Institut canadien de microreproductions historiques

© 1994

Technical and Bibliographic Notes / Notes techniques et bibliographiques

The Institute has attempted to obtain the best original copy available for filming. Features of this copy which may be bibliographically unique, which may alter any of the images in the reproduction, or which may significantly change the usual method of filming, are checked below.

- Coloured covers/
Couverture de couleur
- Covers damaged/
Couverture endommagée
- Covers restored and/or laminated/
Couverture restaurée et/ou pelliculée
- Cover title missing/
Le titre de couverture manque
- Coloured maps/
Cartes géographiques en couleur
- Coloured ink (i.e. other than blue or black)/
Encre de couleur (i.e. autre que bleue ou noire)
- Coloured plates and/or illustrations/
Planches et/ou illustrations en couleur
- Bound with other material/
Relié avec d'autres documents
- Tight binding may cause shadows or distortion
along interior margin/
La reliure serrée peut causer de l'ombre ou de la
distorsion le long de la marge intérieure
- Blank leaves added during restoration may appear
within the text. Whenever possible, these have
been omitted from filming/
Il se peut que certaines pages blanches ajoutées
lors d'une restauration apparaissent dans le texte,
mais, lorsque cela était possible, ces pages n'ont
pas été filmées.

L'Institut a microfilmé le meilleur exemplaire qu'il lui a été possible de se procurer. Les détails de cet exemplaire qui sont peut-être uniques du point de vue bibliographique, qui peuvent modifier une image reproduite, ou qui peuvent exiger une modification dans la méthode normale de filmage sont indiqués ci-dessous.

- Coloured pages/
Pages de couleur
- Pages damaged/
Pages endommagées
- Pages restored and/or laminated/
Pages restaurées et/ou pelliculées
- Pages discoloured, stained or foxed/
Pages décolorées, tachetées ou piquées
- Pages detached/
Pages détachées
- Showthrough/
Transparence
- Quality of print varies/
Qualité inégale de l'impression
- Continuous pagination/
Pagination continue
- Includes index(es)/
Comprend un (des) index
- Title on header taken from: /
Le titre de l'en-tête provient:
- Title page of issue/
Page de titre de la livraison
- Caption of issue/
Titre de départ de la livraison
- Masthead/
Générique (périodiques) de la livraison

- Additional comments: /
Commentaires supplémentaires:

Wrinkled pages may film slightly out of focus.

This item is filmed at the reduction ratio checked below/
Ce document est filmé au taux de réduction indiqué ci-dessous.

10X	12X	14X	16X	18X	20X	22X	24X	26X	28X	30X	32X
					✓						

The copy filmed here has been reproduced thanks to the generosity of:

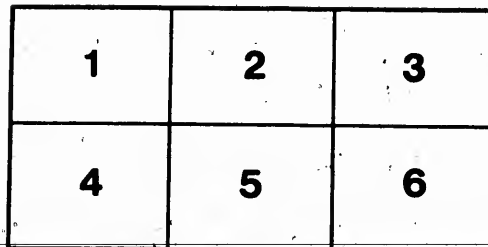
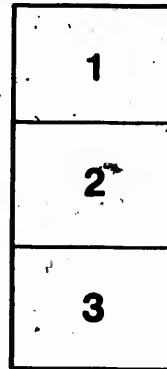
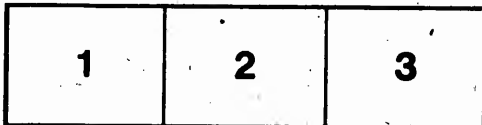
Metropolitan Toronto Reference Library
Baldwin Room

The images appearing here are the best quality possible considering the condition and legibility of the original copy and in keeping with the filming contract specifications.

Original copies in printed paper covers are filmed beginning with the front cover and ending on the last page with a printed or illustrated impression, or the back cover when appropriate. All other original copies are filmed beginning on the first page with a printed or illustrated impression, and ending on the last page with a printed or illustrated impression.

The last recorded frame on each microfiche shall contain the symbol \rightarrow (meaning "CONTINUED"), or the symbol ∇ (meaning "END"), whichever applies.

Maps, plates, charts, etc., may be filmed at different reduction ratios. Those too large to be entirely included in one exposure are filmed beginning in the upper left hand corner, left to right and top to bottom, as many frames as required. The following diagrams illustrate the method:



L'exemplaire filmé fut reproduit grâce à la générosité de:

Metropolitan Toronto Reference Library
Baldwin Room

Les images suivantes ont été reproduites avec le plus grand soin, compte tenu de la condition et de la netteté de l'exemplaire filmé, et en conformité avec les conditions du contrat de filmage.

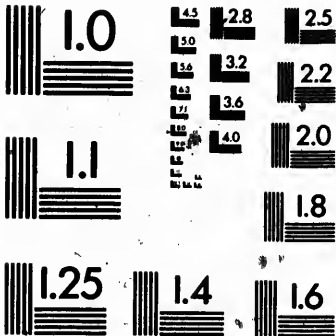
Les exemplaires originaux dont la couverture en papier est imprimée sont filmés en commençant par le premier plat et en terminant soit par la dernière page qui comporte une empreinte d'impression ou d'illustration, soit par le second plat, selon le cas. Tous les autres exemplaires originaux sont filmés en commençant par la première page qui comporte une empreinte d'impression ou d'illustration et en terminant par la dernière page qui comporte une telle empreinte.

Un des symboles suivants apparaîtra sur la dernière image de chaque microfiche, selon le cas: le symbole \rightarrow signifie "A SUIVRE", le symbole ∇ signifie "FIN".

Les cartes, planches, tableaux, etc., peuvent être filmés à des taux de réduction différents. Lorsque le document est trop grand pour être reproduit en un seul cliché, il est filmé à partir de l'angle supérieur gauche, de gauche à droite, et de haut en bas, en prenant le nombre d'images nécessaire. Les diagrammes suivants illustrent la méthode.

MICROCOPY RESOLUTION TEST CHART

(ANSI and ISO TEST CHART No. 2)



APPLIED IMAGE Inc

1653 East Main Street
Rochester, New York 14609 USA
(716) 482 - 0300 - Phone
(716) 288 - 5989 - Fax



UNIVERSITÉ DE MONTRÉAL
BIBLIOTHÈQUE

UNIVERSITÉ DE MONTRÉAL
Collection des Volumes
BIBLIOTHÈQUE

Uni

nd in T
S

M
SH

THE Subscrib
the superior ma
is now coming
covering Roofs
Troughs, Tank
Pipes, Eves, G
and may be use
and copper were
acquaintance wi
adoption. It sun
copper, and is m
over tin plates i
great deal more
of destroying the
jury ; and when
50 years, it ma
worth half the c
mixing with cop
of 14 inches by
8 inches, there i
one jointure onl
in tin plates 40
tin are required
size of 2 sheets
be effected by th
making those jo

not in T. B. Rm.
Sabin[J. C. Reiffenstein]
1837Holl
4711M

MALLEABLE SHEET ZINC.

THE Subscriber calls the attention of the public to the superior malleable quality of the Sheet Zinc, which is now coming into general use, for the purposes of covering Roofs, Flats, Virandas, lining Cisterns, Troughs, Tanks, Vats, &c., and also for Rain Water Pipes, Eves, Gutters, Chimney Flues, Cowls, &c., and may be used to advantage in all cases where lead and copper were formerly required. It needs only an acquaintance with its properties to ensure its general adoption. It surpasses in point of malleability lead or copper, and is more durable. The superiority of Zinc over tin plates is very considerable, as it is not only a great deal more durable, but when it oxides, instead of destroying the metal, it protects it from further injury; and when broken up, which is not necessary for 50 years, it may be melted in any vessel and is then worth half the original cost, being in a fit state for mixing with copper to make brass. Tin being in plates of 14 inches by 10, and the Sheet Zinc of 7 ft. by 2ft. 8 inches, there is evidently a large saving in labour, as one jointure only will be necessary to be made, whilst in tin plates 40 would be required, and as 40 sheets of tin are required to be joined together to make the size of 2 sheets of Zinc, a great saving of metal will be effected by the difference of pieces lapped over in making those jointures.

The original Certificates from the French Government of the success in covering ships' bottoms with this Sheet Zinc, and at a saving of two-thirds when compared with the expense of copper, together with similar certificates of its advantages for the several purposes for which it is now recommended, may be seen at any time at the office of the subscriber. The comparative calculations can also be there seen and examined; they clearly prove that Sheet Zinc is at least 22 per cent. cheaper, exclusive of all other advantages over tin plates. Sufficient is imported for the covering of few Houses, with spouts, nails, gutters, &c. It may be had by application to

J. C. REIFFENSTEIN.

Quebec, 25th May, 1837.

BR(S)
691.85
R24

TEST

Sir,

to the le
My o
used as
tion, th
the flatt
which s
come in
after hav
ter;" in
mogenee
nated or
the gra
face of t
sider all
rect, and
of the s
ness and
the sam
tignity t
surface
der of th
but I s
benefit
sufficien
metal m
(rust.)

TESTIMONIALS AND CERTIFICATES AS TO THE PROPER USE OF ZINC.

Sir,

The following is what I have to say in answer to the letter you have addressed to me.

My opinion on the durability of Zinc in Sheets, used as a covering is in your favor, but under condition, that the sheets must be thick enough, so that at the flattening the unclean and oxidated (rusty) parts, which soil the two large surfaces of the sheet, cannot come in contact, or approach too near to the centre, after having for the last time passed under the "flatter;" in this state, the metal is really pure and homogeneous under the surfaces, and is only contaminated or oxidated (rust-eaten) on the outside. As to the grayish coating, which forms at last on the surface of the sheets of Zinc, exposed to the air, I consider all that Berzelius has said on the subject, as correct, and I think that we must attribute the durability of the sheets of Zinc, exposed to the air, to the hardness and insolubility of this kind of rust. I think that the same thing which happened to the Bronze of antiquity takes place here, the rust which forms on the surface becomes very solid, soon protects the remainder of the metal from any further oxidation (rusting), but I repeat it, that in order to derive any practical benefit from this quality, the Sheets of Zinc must be sufficiently thick, so that a sufficient thickness of pure metal may remain between the two layers of oxide (rust.)

I am, &c. &c. &c.

(Signed DARCET)

I, the undersigned, certify, that there exists to my knowledge in the house of Mr. Mosselman, "La Chaussée, d'Autin Street, No. 7," a building, which was covered with Zinc more than twenty-five years ago, and that the covering after having formed a light layer of grayish oxide, has been preserved in a perfect state to this day, without the superficial oxidation having made any further progress. According to this fact, and according to what has been observed as to the large buildings, covered with Zinc, which are to be found in different places, there is every reason to believe that the oxidation, which takes place immediately, on the surface of the Zinc, by the contact of the moist air, must have the effect of preserving the metal for a very long time.

Paris, 20th July, 1836.

(Signed) P. BERTHIER.

Professor of Chemistry at the Royal School of the Mines,
Member of the Academy of Sciences.

I the undersigned, Chief Architect of Civil Buildings attached to the Office of the Home Department, at Paris, certify, that for a long time I have made use of Zinc from the Manufactory of Mr. Mosselman, in a great number of public and private works, especially at the Museum of Natural History, where the covering of the Gallery of Mineralogy and Geology, containing a surface of about three thousand Metres, has been made with the greatest success, of small tiles of Zinc, groved.

I think that, of all the materials used for covering houses, Zine is the most suitable, because it offers

two advantages, which are seldom found united, namely, *economy* and *solidity*.

Paris, the 20th June, 1836.

(Signed) CHS. ROHAULT.

Seen, to authenticate the signature of Mr. Rohault, Architect of the Works of the Museum of Natural History.

(Signed) EDMOND BLANC,
Master of Requests, Secretary General
for the Home Department.

6th July, 1836.

The same Certificate given by Mr. Lacornée, Architect, having superintended the construction of the "Hotel du Quai d'Orsay."

We, the Visiting Captains of Ships attached to the Tribunal of Commerce, by land and by sea, holding its Sessions at Havre, certify, that in vessels fastened with Iron bolts and nails and covered with Zinc, we have never observed any deterioration either in the Zinc sheathing or in the Iron nails or bolts; arising from the reciprocal action of one metal upon the other, and that even in the Zinc sheathing fastened with Iron nails, which were tinned, instead of Zinc nails, we have observed no oxidation which might be attributed to the contact of the two metals. We certify moreover, that in vessels fastened with Iron nails and bolts, and covered with Copper, although the contact be not direct, the Copper destroys the Iron in a few years.

Havre, the 30th July, 1836.

(Signed) *Philippe, Thomas, M. Cobert, Pre.
Gremont, Griot and Jh. Rion.*

We, Mayor of the City of Havre, certify that the above six signatures, are really those of Messrs. Philippe, Thomas, Cobert, Gremont, Griot and Rion, Visiting Captains living in this Town, and that credence ought to be given thereunto.

Given in the City Hall of Havre, the 2d Aug. 1836.
(Signed) A. LEMAISTRE.

Seen, to authenticate the signature of Mr. A. Lemaistre, Mayor of Havre, affixed to the foregoing. Havre, the 2d August, 1836.

Signature and Seal of the Sub-Prefect.

We, the undersigned, Merchant-owners, Captains and Builders of Ships, certify to whom it may concern, that a long, constant, and every day's experience has incontestably proved to us the following facts.

In Ships fastened with Iron bolts and nails, and sheathed with Zinc, no reciprocal and injurious action of the one metal upon the other has been observed, the Zinc covering, or sheathing increases by no means the natural oxidation of the Iron, whether mastic and barred paper is put between the Zinc and the Iron, for instance at the Iron nails and bolts of the side planking, and of the keel, or whether these two metals are in immediate contact, as at the covering of the stern-post and the rudder and the Iron covering of these two pieces. But a great deal of Zinc sheathing is fastened with Iron nails, tinned, and even in that case we have observed no destructive reciprocal action between these nails and the sheets of Zinc which they fasten.

In Ships fastened with Iron bolts and nails, it is certain that the Iron by no means injures the durability of the Copper, which, on the contrary, it rather protects; but that the action of the Copper on the Iron is so destructive, that the Iron bolts and nails put

under the
a depth of
in the ins
takes plac
withstand
tich betw
and nails
from 6 to
to from 1
Iron cov
into im
comes o
from tw

These
sel is no
out Cop
six inch
the ste
known
vessels
copper
age, it
wise th

Give
(Signe

certify that the
 Messrs. Philippe,
 Rion, Visiting
 that credence

2d Aug. 1836.
 MISTRE.

of M. A. Lo
 foregoing.

Sub-Prefect.

ers, Captains
 may concern,
 experience has
 acts.

nails, and
 various action
 observed, the
 means the
 mastich and
 the Iron, for
 the plank-
 metals are
 the stern-
 g of these
 ing is fas-
 that case
 action be-
 which they

ils, it is
 e durabi-
 it rather
 r on the
 nails put

under the coat of Copper are oxidated, (rust-eaten) to a depth of several inches, and even of more than a foot in the inside of the planking and other pieces, and this takes place after an interval of two years at most, notwithstanding the application of tarred paper and mastich between the sheathing and the heads of the bolts and nails, and in such a manner that nails and of bolts from 6 to ten lines in diameter are sometimes reduced to from 1 to 3 lines, or disappear entirely, and that the Iron covering of the stern-post and rudder brought into immediate contact with the Copper sheathing becomes oxidated and unserviceable, after a passage of from two to three months.

These facts are so notorious, that not a single vessel is now built, intended to be copper-bottomed, without Copper nails and bolts from the keel upwards to six inches above the sheathing, and without covering the stern-post and rudder with copper. We have known no Iron-work on the stern-posts or rudders of vessels with copper-bottoms, except in cases where the copper having been broken in the course of the voyage, it has been found impossible to replace it otherwise than by Iron in the ports where they had put in.

Given in Duplicate, Havre, the 28th July, 1836.

(Signed) August. Normand, Chaubert et Barbutés,
 Jourdan, Martin Lepage and Contour, Frères
 Vaquerie, Lamotte & Co. Asher, jr. Sassaut,
 Quesney and Bretel, A. Moys, F. Perquer and
 Sans, Desmont, Ed. Regdellot, J. Namiet,
 Ach. Hébert, J. Lacheur, jr. and Hervé, M.
 Cor, Palm & Co. Fr. Le Père, the elder,
 Laurent, Im. Martel, Le Marchand, Vasse,
 P. G. Damblat & Co. H. Derochette & Co. and
 Dl. Ansel and Soh.

We, Mayor of the Town of Havre, certify hereby, that the persons who have affixed their signatures to the above, twenty-four in number, are all Merchant-owners and Captains of Vessels, or Shipbuilders, living in this town, and that credence ought to be given thereunto.

Given in the City Hall, Havre, the 2d Aug. 1836,
(Signed) A. LEMAISTRE.

• Seen, to authenticate the signature of Mr. A. Lemaistre, Mayor of Havre.

Havre, the 2d August, 1836.

Seal and Signature of the Sub-Prefect.

The Burgomaster and Aldermen of the City of Brussels.

Agreeably to the request which has been addressed to them in the name of Mr. François Dominique Mosselman, and at the same time to do homage to truth, declare that the great Theatre Royal of the City of Brussels, was in 1820, covered with sheets of Zinc, from the Manufactory of Mr. Mosselman, which sheets were laid down by him, that this kind of covering has entirely answered its purpose, as since the said period no repairs have been requisite, except a very trifling one, which was occasioned by an accident; that after a late examination, it has been found that this covering is still in very good condition, and does not show any trace of defect or decay, that in fact, experience seems to point out, that, of all the materials used until now in the covering of buildings at Brussels, Zinc appears to be the most suitable.

In test
Certificat
concern
Given

By ore

Registere
21,
incl

Certifi
my hand

My Dear
I
from me,
I hope w
I join
observati
at the Pl
this sort
lidity, du
ber work
simple th
ing. Th
spoken,

9

In testimony whereof, we have given the present
Certificate, for the information of whomsoever it may
concern.

Given at the City Hall, Brussels, the 16th Aug. 1836.

(Signed) ROUPPE, Burgomaster,

By order of the Secretary,

(Signed) E. KOCKAERT,

Chief Clerk delegated.

Registered at Brussels, the 17th August, 1836. Vol.
21, f. 99, No. Cl. 3, received 2 fs. 19 cent. adl.
included.

(Signed) BIENVENU.

Certified to be true copies of the originals placed in
my hands.

pr. pr. F. D. MOSSELMAN,
Larrabue.

No. 7, Chaussée d'Autin Street.

Paris, 18th March, 1837.

My Dear Friend,

I herewith send the Certificate you requested
from me, in your note of the 22d February last, which
I hope will be sufficient for your purpose.

I join to the attestation it conveys, my own personal
observation, made use of in building the Entrepôt
at the Place des Marais, and I have ascertained that
this sort of roof unites all the desirable qualities of so-
lidity, durability and above all of economy. The tim-
ber work for Zinc roof may be much lighter and more
simple than that required for any other sort of cover-
ing. That of the Entrepôt of which I have above
spoken, is an example of what I state.

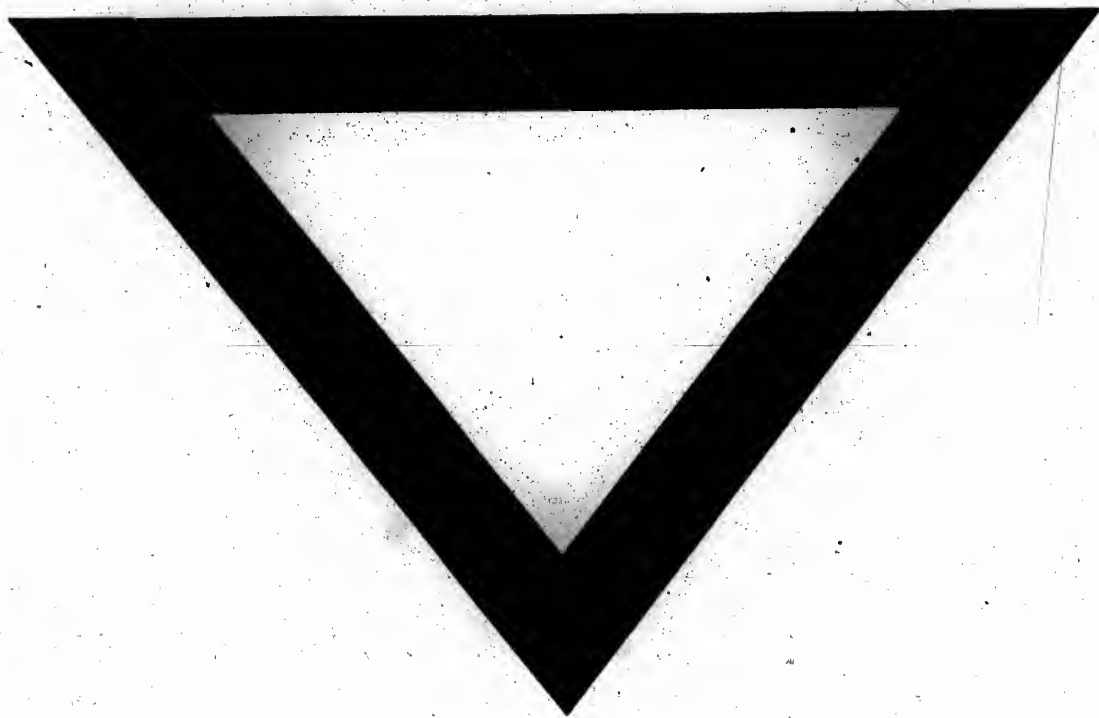
B

I have built stores of a single story, the frame-work of which has been intended for a Zinc roof, and the timber-work cost at least one-half less than the roof of any building to be covered with tiles or slates. This is an immense saving in labour, which has been attested by all the builders in Paris, who have readily adopted the application of this principle in all cases similar to that to which I refer. The building on the Quai D'Orsay, one of the most imposing of our time, the building of the Museum of Natural History, and a great number of private houses are covered with Zinc.

The preference which has been given in these instances to this material, over the system pursued up to this time, sufficiently establishes its superiority over all others.

I am, &c.

GRILLON,
Architect, Inspector General
of Civil Buildings.





Handwritten text, possibly bleed-through from the reverse side of the page. The text is faint and difficult to decipher, but appears to contain several lines of cursive or semi-cursive script.

Additional handwritten text, also appearing to be bleed-through from the reverse side. This section contains more lines of cursive script, continuing the text from the previous block.



1

2

3

4

5

6

7

8

9

10

11

12