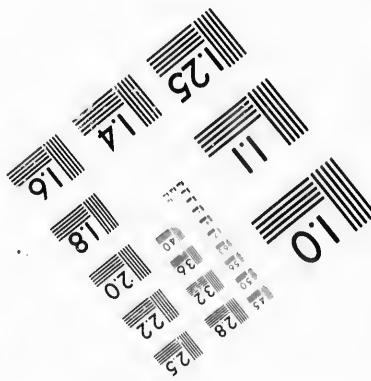
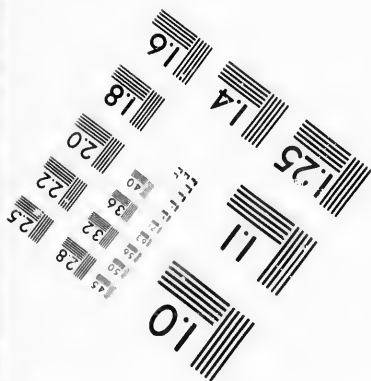
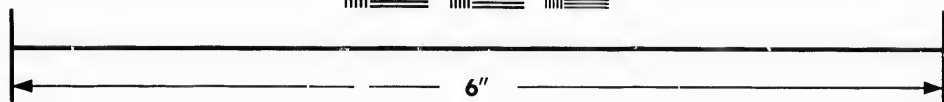
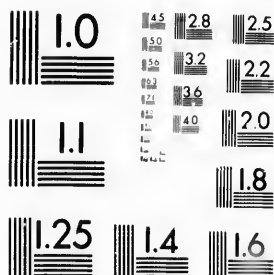


**IMAGE EVALUATION
TEST TARGET (MT-3)**



**Photographic
Sciences
Corporation**

23 WEST MAIN STREET
WEBSTER, N.Y. 14580
(716) 872-4503

Can

28
32
25
22
20

**CIHM/ICMH
Microfiche
Series.**

**CIHM/ICMH
Collection de
microfiches.**



Canadian Institute for Historical Microreproductions / Institut canadien de microreproductions historiques

01

© 1987

Technical and Bibliographic Notes/Notes techniques et bibliographiques

The Institute has attempted to obtain the best original copy available for filming. Features of this copy which may be bibliographically unique, which may alter any of the images in the reproduction, or which may significantly change the usual method of filming, are checked below.

L'Institut a microfilmé le meilleur exemplaire qu'il lui a été possible de se procurer. Les détails de cet exemplaire qui sont peut-être uniques du point de vue bibliographique, qui peuvent modifier une image reproduite, ou qui peuvent exiger une modification dans la méthode normale de filmage sont indiqués ci-dessous.

- | | |
|--|--|
| <input type="checkbox"/> Coloured covers/
Couverture de couleur | <input type="checkbox"/> Coloured pages/
Pages de couleur |
| <input type="checkbox"/> Covers damaged/
Couverture endommagée | <input type="checkbox"/> Pages damaged/
Pages endommagés |
| <input type="checkbox"/> Covers restored and/or laminated/
Couverture restaurée et/ou pelliculée | <input type="checkbox"/> Pages restored and/or laminated/
Pages restaurées et/ou pelliculées |
| <input type="checkbox"/> Cover title missing/
Le titre de couverture manque | <input checked="" type="checkbox"/> Pages discoloured, stained or foxed/
Pages décolorées, tachetées ou piquées |
| <input type="checkbox"/> Coloured maps/
Cartes géographiques en couleur | <input type="checkbox"/> Pages detached/
Pages détachées |
| <input type="checkbox"/> Coloured ink (i.e. other than blue or black)/
Encre de couleur (i.e. autre que bleue ou noire) | <input checked="" type="checkbox"/> Showthrough/
Transparence |
| <input type="checkbox"/> Coloured plates and/or illustrations/
Planches et/ou illustrations en couleur | <input type="checkbox"/> Quality of print varies/
Qualité inégale de l'impression |
| <input type="checkbox"/> Bound with other material/
Relié avec d'autres documents | <input type="checkbox"/> Includes supplementary material/
Comprend du matériel supplémentaire |
| <input type="checkbox"/> Tight binding may cause shadows or distortion
along interior margin/
La reliure serrée peut causer de l'ombre ou de la
distorsion le long de la marge intérieure | <input type="checkbox"/> Only edition available/
Seule édition disponible |
| <input type="checkbox"/> Blank leaves added during restoration may
appear within the text. Whenever possible, these
have been omitted from filming/
Il se peut que certaines pages blanches ajoutées
lors d'une restauration apparaissent dans le texte,
mais, lorsque cela était possible, ces pages n'ont
pas été filmées. | <input type="checkbox"/> Pages wholly or partially obscured by errata
slips, tissues, etc., have been refilmed to
ensure the best possible image/
Les pages totalement ou partiellement
obscurcies par un feuillet d'errata, une pelure,
etc., ont été filmées à nouveau de façon à
obtenir la meilleure image possible. |
- Additional comments: [Printed ephemera] 1 sheet (verso blank) There are some creases in the middle of the pages.
Commentaires supplémentaires:

This item is filmed at the reduction ratio checked below/
Ce document est filmé au taux de réduction indiqué ci-dessous.

10X	12X	14X	16X	18X	20X	22X	24X	26X	28X	30X	32X
						✓					

The copy filmed here has been reproduced thanks to the generosity of:

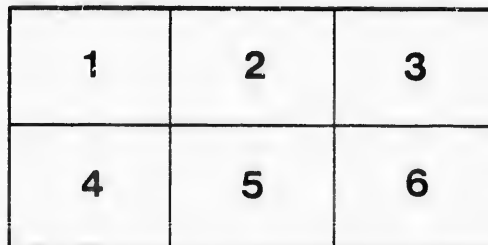
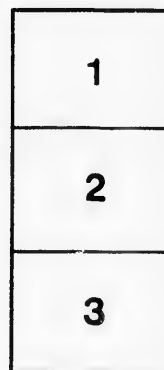
New Brunswick Museum
Saint John

The images appearing here are the best quality possible considering the condition and legibility of the original copy and in keeping with the filming contract specifications.

Original copies in printed paper covers are filmed beginning with the front cover and ending on the last page with a printed or illustrated impression, or the back cover when appropriate. All other original copies are filmed beginning on the first page with a printed or illustrated impression, and ending on the last page with a printed or illustrated impression.

The last recorded frame on each microfiche shall contain the symbol \rightarrow (meaning "CONTINUED"), or the symbol ∇ (meaning "END"), whichever applies.

Maps, plates, charts, etc., may be filmed at different reduction ratios. Those too large to be entirely included in one exposure are filmed beginning in the upper left hand corner, left to right and top to bottom, as many frames as required. The following diagrams illustrate the method:



L'exemplaire filmé fut reproduit grâce à la générosité de:

New Brunswick Museum
Saint John

Les images suivantes ont été reproduites avec le plus grand soin, compte tenu de la condition et de la netteté de l'exemplaire filmé, et en conformité avec les conditions du contrat de filmage.

Les exemplaires originaux dont la couverture en papier est imprimée sont filmés en commençant par le premier plat et en terminant soit par la dernière page qui comporte une empreinte d'impression ou d'illustration, soit par le second plat, selon le cas. Tous les autres exemplaires originaux sont filmés en commençant par la première page qui comporte une empreinte d'impression ou d'illustration et en terminant par la dernière page qui comporte une telle empreinte.

Un des symboles suivants apparaîtra sur la dernière image de chaque microfiche, selon le cas: le symbole \rightarrow signifie "A SUIVRE", le symbole ∇ signifie "FIN".

Les cartes, planches, tableaux, etc., peuvent être filmés à des taux de réduction différents. Lorsque le document est trop grand pour être reproduit en un seul cliché, il est filmé à partir de l'angle supérieur gauche, de gauche à droite, et de haut en bas, en prenant le nombre d'images nécessaire. Les diagrammes suivants illustrent la méthode.

45- (1)

THEATRE!

St. John Dramatic Lyceum

SOUTH SIDE KING SQUARE.

MANAGER & PROPRIETOR, -- J. W. LANERGAN.

Assistant Manager, J. H. Browne. | Leader of the Orchestra, W. Mullaly.

SUMMER SEASON, 1867.

The Manager has much pleasure in announcing to his friends, and the public generally, that he will open the above

POPULAR PLACE OF AMUSEMENT!

For the coming Summer Season,

ON MONDAY EV'NG, JUNE 3, 1867,

With a carefully selected

DRAMATIC COMPANY!

And hopes that his efforts to please will meet with the approval of all

Lovers of the Legitimate Drama!

The following compose the Company :

J. W. LANERGAN,
FRANK ROCHE,
J. B. FULLER,
FRANK HARDENBERG,
D. R. ALLEN,
H. L. BASCOMB,
SHIRLEY B FRANCE,
Lowering Bros J. H. BROWNE,
T. H. BURNS,
E. SEAVER,
Bros Lowering Bros T. C. HOWARD,
E. J. MACK,
Lowering Bros CHAS. MINGAY,
THOS. GRAHAM,
S. LIPPINCOTT.
Leader of the Orchestra, W. MULLALY.
Mrs. J. W. LANERGAN,
Mrs. D. R. ALLEN,
RACHEL NOAH,
SUSAN FLOOD,
SUSSIE CLUER,
EFFIE WARREN,
JENNIE BRYANT,
Mrs. J. H. BROWNE,
EMILY ROBERTS,
MARGARET E. JOHNSON.

The whole forming the strongest Company that the Manager of the Lyceum has ever introduced into St John.

SUSSIE CLUER,
EFFIE WARREN,
JENNIE BRYANT,
Mrs. J. H. BROWNE,
EMILY ROBERTS,
MARGARET E. JOHNSON.

The whole forming the strongest Company that the Manager of the Lyceum has ever introduced into St John.

 Many Dramatic Novelties will be produced during the Season !

A limited number of Season Tickets, at a reduced rate of charge, can be had by applying as soon as convenient to the Manager, or at the Box Office of the Lyceum.

THE OPENING BILL !

MONDAY EVENING, JUNE 3, 1867.

Bulwer's ever popular Comedy, in five acts, called

MONEY !

ALFRED EVELYN,	FRANK ROCHE.
SIR JOHN VESEY,	J. B. FULLER.
SIR FREDERICK BLOUNT,	H. L. BASCOMB.
LORD GLOSSMOR,	SHIRLEY FRANCE.
GRAVES,	FRANK HARDENBERG.
CAPT. DUDLEY SMOOTH, ..	D. R. ALLEN
STOUT,	T. H. BURNS.
SHARP,	E. SEAVR
TOKE,	J. H. BROWNE.
SIR JOHN'S SERVANT,	CHAS. MINGAY.
EVELYN'S SERVANT,	THOS. GRAHAM.
LADY FRANKLIN,	SUSAN FLOOD
CLARA DOUGLAS,	Mrs. D. R. ALLEN.
GEORGINA VESEY,	SUSSIE CLUER.

In consequence of the length and importance of the Comedy no Farce will be played with it.

Prices of Admission.

DRESS CIRCLE ORCHESTRA STALLS, 50 cts. | PARQUETTE, 25 cts.
Reserued Seats in the Dress Circle and Stall 25 cents Extra.

Which can be secured at the Office of the Lyceum during the day of each performance, from 11 A. M. to 1 P. M.
RESERVED SEATS—Reserved until the beginning of the Second Act only.

Tickets for sale during the day at Chubb & Co.'s Stationery Store, Prince Win. Street, and at the Hotels.

The two Back Seats of the Dress Circle are set apart for the exclusive use of Colored People.

Doors open at 7; Curtain to rise at 8.

LADIES UNACCOMPANIED BY GENTLEMEN NOT ADMITTED.

GOOD ORDER IS EXPECTED AND WILL BE RIGIDLY ENFORCED.

G. W. DAY, Printer, 4 Market Street, St. John.

