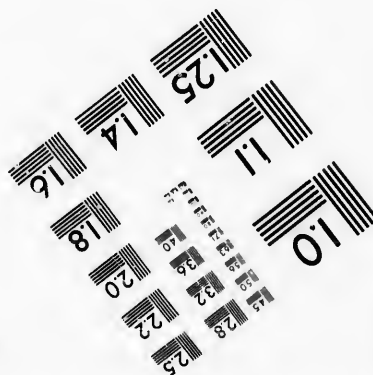
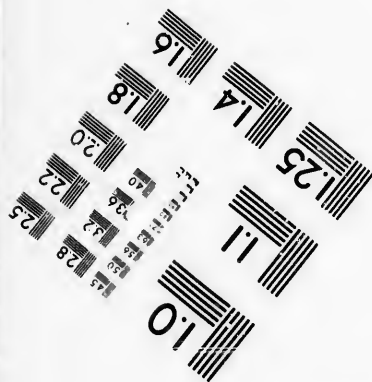
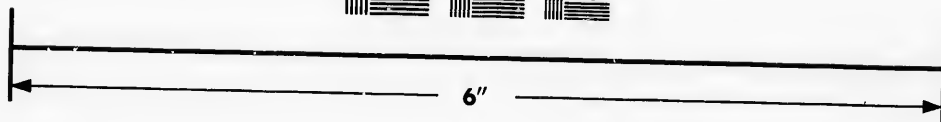
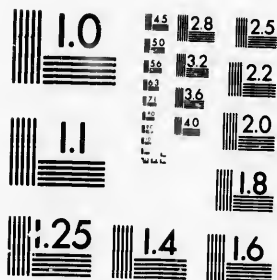


**IMAGE EVALUATION
TEST TARGET (MT-3)**



**Photographic
Sciences
Corporation**

23 WEST MAIN STREET
WEBSTER, N.Y. 14580
(716) 872-4503

**CIHM/ICMH
Microfiche
Series.**

**CIHM/ICMH
Collection de
microfiches.**



Canadian Institute for Historical Microreproductions / Institut canadien de microreproductions historiques

© 1986

Technical and Bibliographic Notes/Notes techniques et bibliographiques

The Institute has attempted to obtain the best original copy available for filming. Features of this copy which may be bibliographically unique, which may alter any of the images in the reproduction, or which may significantly change the usual method of filming, are checked below.

L'Institut a microfilmé le meilleur exemplaire qu'il lui a été possible de se procurer. Les détails de cet exemplaire qui sont peut-être uniques du point de vue bibliographique, qui peuvent modifier une image reproduite, ou qui peuvent exiger une modification dans la méthode normale de filmage sont indiqués ci-dessous.

- | | |
|--|--|
| <input type="checkbox"/> Coloured covers/
Couverture de couleur | <input type="checkbox"/> Coloured pages/
Pages de couleur |
| <input type="checkbox"/> Covers damaged/
Couverture endommagée | <input type="checkbox"/> Pages damaged/
Pages endommagées |
| <input type="checkbox"/> Covers restored and/or laminated/
Couverture restaurée et/ou pelliculée | <input type="checkbox"/> Pages restored and/or laminated/
Pages restaurées et/ou pelliculées |
| <input type="checkbox"/> Cover title missing/
Le titre de couverture manque | <input checked="" type="checkbox"/> Pages discoloured, stained or foxed/
Pages décolorées, tachetées ou piquées |
| <input type="checkbox"/> Coloured maps/
Cartes géographiques en couleur | <input type="checkbox"/> Pages detached/
Pages détachées |
| <input type="checkbox"/> Coloured ink (i.e. other than blue or black)/
Encre de couleur (i.e. autre que bleue ou noire) | <input checked="" type="checkbox"/> Showthrough/
Transparence |
| <input type="checkbox"/> Coloured plates and/or illustrations/
Planches et/ou illustrations en couleur | <input type="checkbox"/> Quality of print varies/
Qualité inégale de l'impression |
| <input type="checkbox"/> Bound with other material/
Relié avec d'autres documents | <input type="checkbox"/> Includes supplementary material/
Comprend du matériel supplémentaire |
| <input type="checkbox"/> Tight binding may cause shadows or distortion
along interior margin/
La reliure serrée peut causer de l'ombre ou de la
distorsion le long de la marge intérieure | <input type="checkbox"/> Only edition available/
Seule édition disponible |
| <input type="checkbox"/> Blank leaves added during restoration may
appear within the text. Whenever possible, these
have been omitted from filming/
Il se peut que certaines pages blanches ajoutées
lors d'une restauration apparaissent dans le texte,
mais, lorsque cela était possible, ces pages n'ont
pas été filmées. | <input type="checkbox"/> Pages wholly or partially obscured by errata
slips, tissues, etc., have been refilmed to
ensure the best possible image/
Les pages totalement ou partiellement
obscurcies par un feuillet d'errata, une pelure,
etc., ont été filmées à nouveau de façon à
obtenir la meilleure image possible. |
| <input checked="" type="checkbox"/> Additional comments: /
Commentaires supplémentaires: | There are some creases in the middle of the pages. |

This item is filmed at the reduction ratio checked below/
Ce document est filmé au taux de réduction indiqué ci-dessous.

10X	14X	18X	22X	26X	30X
<input type="checkbox"/>	<input type="checkbox"/>	<input type="checkbox"/>	<input type="checkbox"/>	<input checked="" type="checkbox"/>	<input type="checkbox"/>
12X	16X	20X	24X	28X	32X

The copy filmed here has been reproduced thanks to the generosity of:

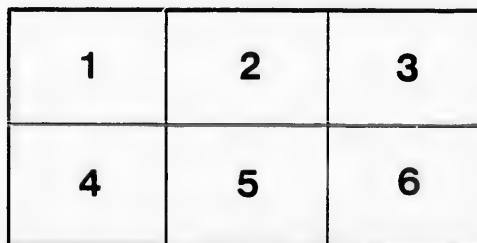
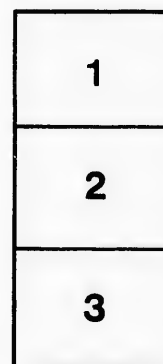
D. B. Weldon Library
University of Western Ontario
(Regional History Room)

The images appearing here are the best quality possible considering the condition and legibility of the original copy and in keeping with the filming contract specifications.

Original copies in printed paper covers are filmed beginning with the front cover and ending on the last page with a printed or illustrated impression, or the back cover when appropriate. All other original copies are filmed beginning on the first page with a printed or illustrated impression, and ending on the last page with a printed or illustrated impression.

The last recorded frame on each microfiche shall contain the symbol \rightarrow (meaning "CONTINUED"), or the symbol ∇ (meaning "END"), whichever applies.

Maps, plates, charts, etc., may be filmed at different reduction ratios. Those too large to be entirely included in one exposure are filmed beginning in the upper left hand corner, left to right and top to bottom, as many frames as required. The following diagrams illustrate the method:



L'exemplaire filmé fut reproduit grâce à la générosité de:

D. B. Weldon Library
University of Western Ontario
(Regional History Room)

Les images suivantes ont été reproduites avec le plus grand soin, compte tenu de la condition et de la netteté de l'exemplaire filmé, et en conformité avec les conditions du contrat de filmage.

Les exemplaires originaux dont la couverture en papier est imprimée sont filmés en commençant par le premier plat et en terminant soit par la dernière page qui comporte une empreinte d'impression ou d'illustration, soit par le second plat, selon le cas. Tous les autres exemplaires originaux sont filmés en commençant par la première page qui comporte une empreinte d'impression ou d'illustration et en terminant par la dernière page qui comporte une telle empreinte.

Un des symboles suivants apparaîtra sur la dernière image de chaque microfiche, selon le cas: le symbole \rightarrow signifie "A SUIVRE", le symbole ∇ signifie "FIN".

Les cartes, planches, tableaux, etc., peuvent être filmés à des taux de réduction différents. Lorsque le document est trop grand pour être reproduit en un seul cliché, il est filmé à partir de l'angle supérieur gauche, de gauche à droite, et de haut en bas, en prenant le nombre d'images nécessaire. Les diagrammes suivants illustrent la méthode.

ire
détails
es du
modifier
er une
filmage

es

errata
to

e pelure,
on à



32X

LONDON PTD & LITHO CO

MICHIGAN, OHIO
CANADIAN CIRCUIT

EIGHTEEN
THEATRES

CLEVELAND, CINCINNATI, BUFFALO,
DETROIT, TORONTO,
TOLEDO, LONDON, HAMILTON,
WOODSTOCK, BAGINAW,
GRAND RAPIDS, BAY CITY AND
JACKSON.

Grand Opera House
London, Ontario.
C.J. WHITNEY. A.E. ROOTE. ONTARIO.
LESSEE. MANAGER



W. SMITH.

E. HOLLAND.

W. S. PARTRIDGE.

SMITH & BROS.

THE LEADING
SANITARY
PLUMBERS
AND
HEATING
ENGINEERS
OF
WESTERN
ONTARIO.

376
RICHMOND STREET,

LONDON.

OPPOSITE GRAND OPERA HOUSE BUILDING.

A full stock of Supplies always on hand.

TELEPHONE 532.

LADIES! THE ONLY WAY TO GET HELP IS THROUGH THE "FREE PRESS" WANT COLUMN.



**Parisian
Steam
Laundry**

73 & 75 DUNDAS STREET.

BRANCH OFFICES:

226 Dundas St. 752 Waterloo. 410 Hamilton Rd.
280 " " 572 Pall Mall. 251 Wellington.
310 " " 309 Richmond. 338 Ridout.
632 " " 483 " "

J. K. SPRY, Manager.

HUESTON'S

**LIVERY,
Goupe & Gab Stables**
WELLINGTON STREET.

Finest Horses and Carriages in the City.
OPEN DAY AND NIGHT. TELEPHONE 441.

ROBT. HUESTON,
Proprietor.

H. McKENNA,
—FOR—

Choice Cigars, Tobaccos
AND PIPES.

ALWAYS OPEN
..... AFTER THE OPERA.

225 DUNDAS STREET.

RIVARD

The Leading Hatter
and Furrier
HAS THE FINEST STOCK OF

FURS

IN THE CITY TO SELECT FROM.
HIS PRICES ARE RIGHT!

Rivard

London's Fashionable Hatter
and Furrier,
400 RICHMOND-ST.

WILLIAMS' Pianos CANADA'S FAVORITE

Cannot be excelled for touch, singing quality, delicacy and great power of tone, with highest excellence of workmanship.

ALL THE LATEST VOCAL AND INSTRUMENTAL MUSIC RECEIVED AS PUBLISHED.

Musical Instruments of all kinds, Strings and Fittings
AT LOWEST PRICES.

R. S. WILLIAMS & SON, 171 DUNDAS STREET,
LONDON, ONT.
J. A. CRODEN, Manager.

Frank Jucker

PROGRAMME

MONDAY, DECEMBER 11TH.

ONE OF THE GRANDEST PLAYS EVER WRITTEN,
IN FOUR ACTS, ENTITLED

**"The
Outcast."**

(Programme continued on next page.)

SOMETHING NEW.

Opera English & Canadian
Caramels. Chocolate Creams.

VERY FINEST Olives in Bulk.
French Crystalized .. Fresh Roquefort Cheese..
FRUITS.

FITZGERALD, SCANDRETT & CO.
169 Dundas Street.

ESTABLISHED 1831.

**H. DAVIS & SON,
WATCHMAKERS
AND
JEWELLERS**

DEALERS IN
Watches, Clocks, Jewellery, Spectacles,
Silver Plated Ware, &c.

170 DUNDAS ST., LONDON, ONT.

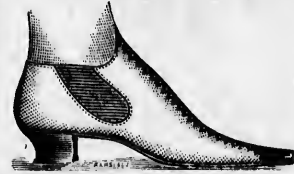
W. T. STRONG

Dispensing
Chemist,

184 Dundas Street,
LONDON, - ONTARIO.

BROWN'S

Central Shoe Store,
145 DUNDAS ST.



DON'T FAIL TO SEE... **Brown's Special Lines**

Ladies' Drawing-Room, Ball-Room,
Boudoir, Theatrical, Calisthenic,
Skating and Walking Shoes.
Overgaiters, Moccasins & Leggings.

INSPECT BROWN'S SPECIALS IN
Gents' Dress, Walking and Hockey Boots.
Latest New York and Chicago Tips.

Newest Designs in Patents, Royal Tip, Oil Tan,
Bluchers and Bals, with Spitch Wlts,
and the Celebrated Dowe's Felt Insole.

OVERSHOES, SPATS AND RUBBERS
IN ENDLESS VARIETY.

A beautiful assortment of Fancy Slippers
for Christmas and New Years.

See our Windows . .
Inspect our Goods . .
Ascertain our Prices

And we are sure you will be agreeably
surprised.

John S. Brown,
TELEPHONE 881.

IF YOU WANT THE BEST, TAKE THE "FREE PRESS." ALL THE NEWS!

—GO TO—
SOUTHCOTT'S
 —FOR YOUR—
Overcoating
 —OR—
FALL & SUITING
 AND GET SATISFACTION AT
 CLOSE PRICES.
361 RICHMOND STREET.

GRAHAM BROS
 FOR
Fall and Winter Underclothing
 ALL SIZES AND WEIGHTS.
 CHEAPEST STOCK IN THE CITY.
159 DUNDAS STREET,

Wm. Stevely & Son,
 —THE LEADING DEALERS IN—
STOVES, RANGES,
 .. AND ..
HOUSE FURNISHING GOODS.
 OUR STOCK IS THE LARGEST.
 OUR PRICES THE LOWEST.
362 RICHMOND STREET.
 'PHONE 452.

I-I-I-I-I-I-I-I-I-I

PRINTERS
 LITHOGRAPHERS
 ENGRAVERS

The _____
London
Printing and
Lithographing
Co'y, SUCCESSIONS TO FREE PRESS
 PRINTING AND LITHO.
 DEPARTMENTS.

OFFICE,
 "FREE PRESS"
 BUILDING.

BEST WORK
 AT MODERATE
 PRICES.

I-I-I-I-I-I-I-I-I-I

TEGUMSEH HOUSE
 LONDON.



Directly opposite G.T.R. depot;
 street railway past the doors;
 convenient to all the wholesale
 and retail business houses of
 city, making it the most desir-
 able hotel in the city; elevator,
 and heated throughout with
 steam.

Porter in attendance on
 arrival of all trains.

RATES, \$2.00 AND \$2.50
 PER DAY,

ACCORDING TO LOCATION.

No Extra Charge For Baggage.

C. W. DAVIS, PROP.

«Programme Continued.»

THE PLAYERS.

JERRY WESTON, The Outcast, FRANK TUCKER
 James Blackburn C. W. Porter
 Colonel Lee Al. H. Bailey
 Jack Worthington J. Knox Gavin
 Mr. T. Summers C. P. Coast
 Eugene Gray B. H. Killmar
 Harold T. James B. Richardson
 Nana Gertie Claire
 Mrs. Lee Minnie Wilson
 Ellen Gray Nellie Barr
 Sadie Ethel Tucker

Officers, Guards, Etc.

A PLAY OF PURE HEART INTEREST.

A BEAUTIFUL PRESENT GIVEN AWAY

Wednesday Night, a Set of Dishes, 100 Pieces.



(Programme continued on last page.)

McLEAN'S HARDWARE

—FOR—

Bissell's Carpet Sweepers.

WE CAN SHOW YOU TWELVE DIFFERENT STYLES SAME
 AS ARE NOW DISPLAYED BY THE BISSELL COM-
 PANY AT THE WORLD'S FAIR.

CALL AND SEE THESE GOODS

—AT—

McLEAN'S HARDWARE,
151 Dundas Street.

W. T. STRONG,
Dispensing
Chemist,
184 DUNDAS ST.,
LONDON, ONT.

..FOR..

Fine Etchings....
 —AND—
Engravings

—TRY—

O. B. GRAVES,
222 DUNDAS STREET.



BRENER BROS
 LONDON, ONT.

SOLD BY ALL
FIRST-CLASS DEALERS.

GLOVES

— IN —

SILK & KID

— IN —

18 to 30 inch,

IN ALL THE NEW SHADES.

TELEPHONE 611.

OPERA
FANS

EVENING GOODS

A. Rolfe

We show the largest
range of
S.I.L.K.S
IN THE CITY.

OUR NEW Velour Cloth
IS THE LATEST.
In all the New Tints,
With Trimming to Match.

FINE DRESSMAKING.

202 DUNDAS STREET.

EDY BROS.

The Artistic Photographers,

— RECEIVED —

Three First Prizes

— AND —

DIPLOMA

For Finest Display of Photography
AT WESTERN FAIR, 1893.

Cabinet Photos, \$3 per doz.

EDY BROS.,

214 DUNDAS STREET.

The HUB

Restaurant,

203 & 205 DUNDAS STREET.

For a NICE LUNCH after the
Opera, go to the
Hub Restaurant.

Steaks, Chops, Chicken,
Oysters, Etc.

OPEN TILL 12.00 P.M.

J. W. MARTIN, Prop.

(Late of the Martin House)

« Programme Concluded. »

During the evening, incidental to the performance, the CHALLENGE ORCHESTRA will render the following selections:—

MARCH—"The Outcast,".....Barshy
WALTZ—"Neoline,".....Dalby
OVERTURE—"La Souverane,".....Herman
OVERTURE—Descriptive.....Streeter

The Furniture used on stage is supplied by JOHN FERGUSON & SON,
Furniture Manufacturers.

NEXT + ATTRACTION

To-morrow (Tuesday) Night.

THE LATEST NEW YORK
COMEDY SUCCESS,
IN FOUR ACTS,

OUR JACK

COMING -

Sol. Smith Russell.

A FINE PERFORMANCE

is a satisfactory return
for your money, but when
you can get from us a
superior quality of Coal
or Wood at the same price
you would pay for an inferior
quality, it is even
more satisfactory. When
in need of "warmth," try
us.

CAMERON'S

421 RICHMOND STREET,
and BURWELL STREET at G. T. R.

WE call the attention of our business men to the
PROGRAM as an advertising medium. It reaches
the class of people whose trade you want, and the
way to get that trade is to make yourself known.

BELTON & ROOTE,

BILL POSTING,
DISTRIBUTING
...AND...

GENERAL ADVERTISING AGENTS

Control all the Bill Boards and Dead Walls throughout
the City. Population of City, 6,000.

All orders for Bill Posting, Distributing, Card
Tacking, and General Advertising for
Western Ontario will receive
prompt attention.

OFFICE: BOX OFFICE, OPERA HOUSE.

Roses, Carnations,

Palms,

Ferns, Bulbs,

J. GAMMAGE & SONS,

213 Dundas Street.

INDIAN... CEYLON TEA IMPORTING HOUSE.

NEW BLENDS, DELICIOUS AND ECONOMICAL, AT MODERATE PRICES.

"English Breakfast," "Five o'clock Tea," & "Club House" Blends.
60c. 50c. 45c.

These Blends are standard selections of choice Teas. Highly recommended to
families for their fine quality and economical properties.

S. FUGE,

—IMPORTER OF—
CHOICE TEAS
TELEPHONE 858.

436 Richmond St.
LONDON.

