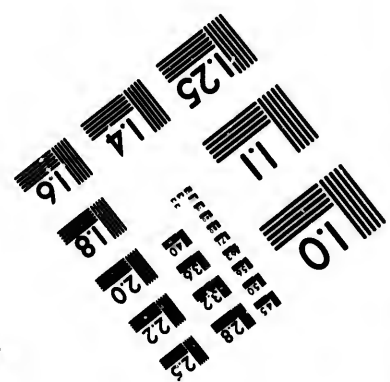
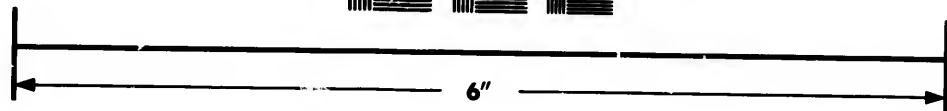
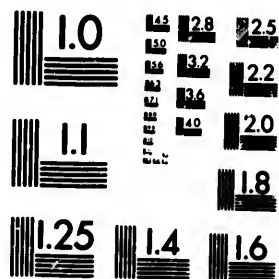


**IMAGE EVALUATION  
TEST TARGET (MT-3)**



**Photographic  
Sciences  
Corporation**

23 WEST MAIN STREET  
WEBSTER, N.Y. 14580  
(716) 872-4503

1.5 1.8 2.0 2.2 2.5  
2.8 3.2 3.6 4.0 4.5  
5.0 5.6 6.3 7.1 8.0

**CIHM/ICMH  
Microfiche  
Series.**

**CIHM/ICMH  
Collection de  
microfiches.**



**Canadian Institute for Historical Microreproductions / Institut canadien de microreproductions historiques**

101

**© 1982**

Technical and Bibliographic Notes/Notes techniques et bibliographiques

The Institute has attempted to obtain the best original copy available for filming. Features of this copy which may be bibliographically unique, which may alter any of the images in the reproduction, or which may significantly change the usual method of filming, are checked below.

L'Institut a microfilmé le meilleur exemplaire qu'il lui a été possible de se procurer. Les détails de cet exemplaire qui sont peut-être uniques du point de vue bibliographique, qui peuvent modifier une image reproduite, ou qui peuvent exiger une modification dans la méthode normale de filmage sont indiqués ci-dessous.

- Coloured covers/  
Couverture de couleur
- Covers damaged/  
Couverture endommagée
- Covers restored and/or laminated/  
Couverture restaurée et/ou pelliculée
- Cover title missing/  
Le titre de couverture manque
- Coloured maps/  
Cartes géographiques en couleur
- Coloured ink (i.e. other than blue or black)/  
Encre de couleur (i.e. autre que bleue ou noire)
- Coloured plates and/or illustrations/  
Planches et/ou illustrations en couleur
- Bound with other material/  
Relié avec d'autres documents
- Tight binding may cause shadows or distortion  
along interior margin/  
La reliure serrée peut causer de l'ombre ou de la  
distortion le long de la marge intérieure
- Blank leaves added during restoration may  
appear within the text. Whenever possible, these  
have been omitted from filming/  
Il se peut que certaines pages blanches ajoutées  
lors d'une restauration apparaissent dans le texte,  
mais, lorsque cela était possible, ces pages n'ont  
pas été filmées.
- Additional comments:/  
Commentaires supplémentaires:

- Coloured pages/  
Pages de couleur
- Pages damaged/  
Pages endommagées
- Pages restored and/or laminated/  
Pages restaurées et/ou pelliculées
- Pages discoloured, stained or foxed/  
Pages décolorées, tachetées ou piquées
- Pages detached/  
Pages détachées
- Showthrough/  
Transparence
- Quality of print varies/  
Qualité inégale de l'impression
- Includes supplementary material/  
Comprend du matériel supplémentaire
- Only edition available/  
Seule édition disponible
- Pages wholly or partially obscured by errata  
slips, tissues, etc., have been refilmed to  
ensure the best possible image/  
Les pages totalement ou partiellement  
obscurcies par un feuillet d'errata, une pelure,  
etc., ont été filmées à nouveau de façon à  
obtenir la meilleure image possible.

This item is filmed at the reduction ratio checked below/  
Ce document est filmé au taux de réduction indiqué ci-dessous.

10X	12X	14X	16X	18X	20X	22X	24X	26X	28X	30X	32X
<input type="checkbox"/>	<input type="checkbox"/>	<input type="checkbox"/>	<input type="checkbox"/>	<input type="checkbox"/>	<input type="checkbox"/>	<input checked="" type="checkbox"/>	<input type="checkbox"/>	<input type="checkbox"/>	<input type="checkbox"/>	<input type="checkbox"/>	<input type="checkbox"/>

The copy filmed here has been reproduced thanks to the generosity of:

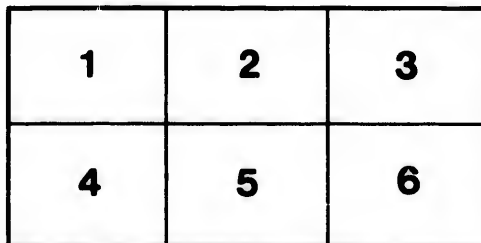
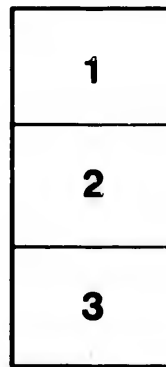
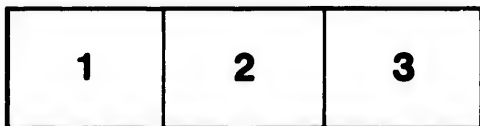
Library,  
Geological Survey of Canada

The images appearing here are the best quality possible considering the condition and legibility of the original copy and in keeping with the filming contract specifications.

Original copies in printed paper covers are filmed beginning with the front cover and ending on the last page with a printed or illustrated impression, or the back cover when appropriate. All other original copies are filmed beginning on the first page with a printed or illustrated impression, and ending on the last page with a printed or illustrated impression.

The last recorded frame on each microfiche shall contain the symbol  $\rightarrow$  (meaning "CONTINUED"), or the symbol  $\nabla$  (meaning "END"), whichever applies.

Maps, plates, charts, etc., may be filmed at different reduction ratios. Those too large to be entirely included in one exposure are filmed beginning in the upper left hand corner, left to right and top to bottom, as many frames as required. The following diagrams illustrate the method:



L'exemplaire filmé fut reproduit grâce à la générosité de:

Bibliothèque,  
Commission Géologique du Canada

Les images suivantes ont été reproduites avec le plus grand soin, compte tenu de la condition et de la netteté de l'exemplaire filmé, et en conformité avec les conditions du contrat de filmage.

Les exemplaires originaux dont la couverture en papier est imprimée sont filmés en commençant par le premier plat et en terminant soit par la dernière page qui comporte une empreinte d'impression ou d'illustration, soit par le second plat, selon le cas. Tous les autres exemplaires originaux sont filmés en commençant par la première page qui comporte une empreinte d'impression ou d'illustration et en terminant par la dernière page qui comporte une telle empreinte.

Un des symboles suivants apparaîtra sur la dernière image de chaque microfiche, selon le cas: le symbole  $\rightarrow$  signifie "A SUIVRE", le symbole  $\nabla$  signifie "FIN".

Les cartes, planches, tableaux, etc., peuvent être filmés à des taux de réduction différents. Lorsque le document est trop grand pour être reproduit en un seul cliché, il est filmé à partir de l'angle supérieur gauche, de gauche à droite, et de haut en bas, en prenant le nombre d'images nécessaire. Les diagrammes suivants illustrent la méthode.

ails  
du  
odifier  
une  
page

rrate  
o

elure,  
à

The Dominion of Canada.<sup>1</sup>

## List of the Geological Formations of Canada:

15. Triassic.	} Carb.	4 c. Loraine.	} 1. Upper Cambrian		
14. Coal Measures.		4 b. Utica.		or Siluro-Cam-	
13 b. Mississippi, Carb. l. s.		4 a. Trenton.		brian.	
12. Catskill, (Old Red Sandstone.)		} Devonian.	3 c. Chazy.	} 3. Middle Cambrian.	
11 b. Chemung and Portage.			3 b. Levis.		
10 b. Hamilton, inc. Mar. & Gen.			3 a. Calciferous.		
9 c. Corniferous, or Up. Held.			2 d. Potsdam.		} 2. Lower Cam-
8. Oriskany.			2 c. Sillery.		
7. Lower Helderberg.		2 b. Acadian.			
6. Salina, or Onondaga.		} Silurian.	2 a. Lower Taconic.	} 1. Eozoic	
5 d. Quelph.	1 d. Montalban.		or		
5 c. Niagara.	1 c. Norian or Labrador. <sup>2</sup>		Crystalline.		
5 b. Clinton.	1 b. Huronian.				
5 a. Medina and Onida.	1 a. Laurentian.				

Ms.	1 The Grand Trunk Railway.	Ms.	Riviere du Loup Branch—Con.
0	Portland, Me.	1	d. Montalban.
11	Yarmouth.	95	St. Denis.
27	Danville Jun.	105	Ste. Helène.
36	Mechanics' Pls.	125	Riv. du Loup.
47	South Paris.	130	St. Arsène.
70	Hethel.	138	Isle Verte.
91	Gorham, N. H.	144	Trois Pistoles.
123	Groveton Jun.		Quebec Branch.
134	N. Stratford.	0	Point Levis, op-
149	Island Pond.		posito Queb.
166	Norton Mills.	55	Stanford.
175	Coatcook.	64	Arthabaska.
186	Westerville.	96	RICHMOND.
193	Lennoxville.		Arthabaska Branch.
196	Sherbrooke.	0	ARTHABASKA.
217	"	48	Aston.
221	RICHMOND.	25	St. Celestin.
228	Lisgar.	31	St. Gregoire.
235	Durham.	35	TREK RIVERS.
243	Acton.		Montreal to Toronto and Detroit.
255	Britannia Mills	0	Montreal.
262	St. Hyacinthe.	8	Laehine Jun.
275	St. Hilaire.	14	Point Claire.
282	St. J'uno.	21	St. Anne.
292	St. Lambert.	24	Vaudreuil.
297	MONTREAL.	31	St. Dominique.
	Riviere du Loup Branch.	37	Coteau Land'g.
0	Point Levis.	48	Bainsville.
8	Chaudière.	54	Lancaster.
11	St. J. Christost.	59	Summertown.
28	St. Michael.	67	Cornwall.
46	St. Thomas.	72	Mille Roches.
60	L'Islet.	77	Dickinson.
76	St. Roch.	81	Farran's Point.
		92	Morrisburg.

1. Corrected and the nomenclature arranged by Prof. T. Sterry Hunt, LL. D., F. R. S.

2. The Norian or Labrador series (Upper Laurentian of Logan) is found, like the Huronian, to rest unconformably upon the Laurentian, but its true relation to the Huronian being yet undetermined, the position at present assigned to it in the Eozoic succession is only provisional.—T. S. H.

Riv  
Blair

Grand Trunk Railway.

Ms.   (Montreal to Toronto and Detroit—Con.)'	
99 Iroquois.	3 c. Chazy.
104 Edwardsburg.	3 a. Calciferous.
112 Prescott Jun.	"
112 Prescott Jun.	3 a. Calciferous-45 m.
164 Ottawa.	3 c. Chazy, 7 miles.
115 Gladstone.	3 a. Calciferous.
120 Maitland.	"
125 BROCKVILLE.	"
129 Lvn.	2 b. Potsdam.
138 Mallorytown.	"
147 Landsdowne.	1 a. Laurentian, 34 m.
155 Gananoque.	"
162 Bailantyne's.	"
169 Rideau.	"
172 KINGSTON.	"
180 Collins' Bay.	4 a. Trenton, 114 miles.
194 Fredericks'brg	"
198 Napanee.	"
213 Shannonville.	"
223 BELLEVILLE.	<i>Trenton</i>
232 Trenton.	"
241 Brighton.	"
246 Colborne.	"
256 Grafton.	"
264 Cobourg.	"
270 Port Hope.	"
279 Newtonville.	"
286 Pt. Newcastle.	"
290 Bowmanville.	4 b. Utica, 24 miles.
294 Saxony.	"
299 Oshawa.	"
303 Whitby.	"
310 Dunn's Creek.	"
316 Port Union.	4 c. Loraine, 44 miles.
324 Scarboro Jun.	"
333 TORONTO.	"
341 Weston.	"
354 Brampton.	5 a. Medina, 11 miles.
362 GEORGETOWN.	"
365 Limehouse.	5 d. Guelph, 26 miles.
368 Aeton West.	"
374 Rockwood.	"
381 GUELPH.	"
386 Balmoral.	"
391 Breslau.	"
396 Berlin.	6. Onondaga, 14 miles.
403 Doon.	5 a. Guelph.
408 Galt.	"
402 Petersburg.	6. Onondaga.
405 Baden.	7 & 8. Cornif. 16 m. and
421 STRATFORD.	" [Oriskany
421 STRATFORD.	" 33 m.
432 St. Mary's.	"
444 Thorndale.	"
454 LONDON.	"
421 STRATFORD.	" 26 m.
432 St. Mary's.	"
447 Lucan.	"

*Ridge & Black River*



Grand Trunk Railway.

Ms.   Montreal to Toronto and Detroit—Con.	
454 Ailsa Craig.	10 b. Hamilton, 23 m.
461 Park Hill.	"
470 Widder.	"
479 Forrest.	11 b. Chemung, 91 m.
496 Blackwell.	"
501 SARNIA.	"
502 P. Huron, Mich	"
512 Ch. & L. H. Jun	"
537 Milw. Junc.	"
561 Detroit Junc.	"
564 DETROIT.	10 b. Hamilton, 3 miles.

Buffalo to Goderich and Detroit.	
0 BUFFALO.	10. Hamilton, 2 miles.
2 Fort Eric.	9. Corniferous, 30 m.
19 Port Colborne.	"
32 Feeder.	6. Salina, 60 miles.
38 Dunnville.	"
59 Caledonia.	"
68 Onondaga.	"
76 BRANTFORD.	"
84 Paris.	"
82 Drumbo.	"
97 Bright.	9. Corniferous, 68 m.
115 STRATFORD.	"
128 Mitchell.	"
139 Seaforth.	"
148 Clinton.	"
160 GODERICH.	"

Montreal to St. John's and Rouse's Point.	
0 MONTREAL.	4 a. Trenton, 2 miles.
2 St. Lambert.	4 b. Utica, 19 miles.
17 Laprairie Jun.	"
21 Lacadie.	"
27 St. John's.	4 a. Trenton, 29 miles.
40 Stottsville.	"
45 Lacolle.	"
50 ROUSE'S POINT.	"

Montreal to Lachine and Province Line.	
0 MONTREAL.	4 a. Trenton, 10 miles.
8 Lachine.	"
10 Caughnawaga.	4 a. Trenton.
15 St. Isidore.	3 c. Chazy, 18 miles.
21 St. Remi.	"
28 Hughes.	3 a. Calciferous, 12 m.
36 Hemmingford.	"
40 PROVINCE LINE	"

2 Canada Southern Railway.	
0 BUFFALO.	9. Corniferous, 2 miles.
6 Victoria.	6. Onondaga, 58 miles.
8 Niagara Junc.	"
23 Welland.	"
32 Perry.	"
47 CANFIELD.	"
54 Dean's.	"
64 Hagersville.	9. Corniferous, 64 miles.
72 Villa Nova.	"

Ms.   Canada Southern Railway—Con.		Ms.   Great Western Railway.—Con.	
83 Windham.	9. Corniferous.	168 Thamesville.	10 b. Hamilton, 25 m.
99 Tilsonburg.	"	183 Chatham.	"
111 Springfield.	"	198 Prairie.	9. Corniferous, 36 m.
124 St. THOMAS.	10. Hamilton, 74 miles.	207 St. Clair.	"
128 St. CLAIRE JN.	"	221 Tecumseh.	"
137 Iona.	"	229 Windsor.	"
150 Bismark.	"	230 Detroit.	10 b. Hamilton, 1 m.
162 Highgate.	"	Great Western Railway Air Line.	
187 Buxton.	"	00 Buffalo.	9. Corniferous, 75 m.
198 Tilbury.	"	16 Welland.	"
204 Comber.	9. Corniferous, 48 miles.	72 Simcoe.	"
213 Woodlee.	"	81 Delhi.	10 b. Hamilton, 68 m.
227 Colchester.	"	99 Corinth.	"
235 AMHERSTBURG.	"	112 New Sarnia.	"
236 Grosse Isle.	"	117 St. Thomas.	"
239 Trenton.	"	136 Baird's.	"
256 Detroit.	10. Hamilton, 10 miles.	139 Lawrence.	"
0 Buffalo.	9. Corniferous.	145 GLENCOK.	11 b. Chemung, 2 m.
8 Niagara June.	6. Onondaga.	224 Windsor.	"
19 Black Creek.	5 d. Guelph.	225 Detroit.	"
25 Chippewa.	5 c. Niagara.	4 Toronto, Grey and Bruce Railway.	
28 Clifton House.	"	0 Toronto.	4 c. Loraine, 33 miles.
29 Susp. Bridge.	"	9 Western June.	"
35 Queenston.	5 a. Medina	22 Kleinburg.	"
42 Niagara.	"	27 Bolton.	"
3 Great Western Railway.		33 Mono Road.	5 a. Medina, 5 m.
Susp. BRIDGE.		41 Charleston.	5 c. Niagara, 11 m.
0 Clifton.	5 c. Niagara, 9 miles.	49 Orangeville.	"
9 Thorold.	"	64 Shelburne.	5 d. Guelph, 38 m.
11 St. Catharines.	5 a. Medina, 34 miles.	81 Proton.	"
27 Grimsby.	"	87 Flesherton.	5 c. Niagara, 6 m.
43 HAMILTON.	"	93 Markdale.	5 d. Guelph, 16 m.
43 HAMILTON.	5 a. Medina 32 miles.	98 Berkeley.	"
45 Toronto June.	"	107 Arnot.	"
56 Bronte.	"	109 Chatsworth.	5 c. Niagara, 13 m.
69 Port Credit.	"	114 Rochford.	"
75 Mimico.	4 c. Loraine, 7 miles.	122 OWEN SOUND.	" <i>Niag. &amp; Clinton</i>
82 Toronto.	"	5 Northern Railway of Canada.	
43 HAMILTON.	5 b. Clinton.	0 Toronto.	4 c. Loraine, 24 miles.
Dundas.*	{ 5 c. Niagara.	14 Thornhill.	"
	{ 5 b. Clinton.	18 Richmond Hill	"
	5 d. Guelph.	22 King.	"
55 Copetown.	"	30 Aurora.	4 b. Utica, 14 m.
59 Lynden.	"	34 Newmarket.	"
62 HARRISBURG.	"	38 Holland.	"
65 St. George.	"	49 Gifford.	5 d. Guelph, 34 m.
67 Dumfries.	6. Onondaga.	52 Lefroy.	"
72 PARIS.	" Gravel ridge.	57 Bramley.	"
79 Princeton.	"	63 Allendale.	"
84 Governor's.	9. Corniferous.	74 Angus.	4 b. Utica.
80 Woodstock.	"	86 Stayner.	"
110 Dorchester.	"	94 COLLINGWOOD.	"
119 LONDON.	"	105 Meaford.	4 c. Loraine, 16 miles.
129 Komoka.	10 b. Hamilton, 26 m.		
140 Longwood.	"		
145 Appin.	11 b. Chemung, 23 m.		
156 Newbury.	"		

\*At Dundas, close to Station, on N. side, a fine section of Niagara and Clinton.

YIANKI  
YINBUR JACOBSON  
ALAMAO 70

*See*

6 Intercolonial Railway.		Intercolonial Railway.—Con.	
Eastern Division.		Continuation of Northern Division.	
0 Halifax.	2. Lower Cambrian.	477 Ste. Flavie.	2. Lower Cambrian.
8 Bedford.	" "	515 St. Fabien.	" "
13 Windsor June.	" "	534 Trois Pistoles.	" "
28 Enfield.	" "	552 Isle Verte.	" "
30 Elusdale.	" "	561 Rivière du Loup.	" "
35 Milford.	13 a. Bonaventure.	Pictou Branch.	
39 Shubenacadie.	" "	61 Truro.	16. Triassic.
44 Stewiacke.	" "	70 Union.	13 a. Bonaventure.
53 Brookfield.	" "	74 Riverdale.	" "
61 Truro.	16. Triassic.	82 West River.	5-7. Silurian.
Central Division.		89 Glengarry.	13 a. Bonaventure.
	16. Triassic.	96 Hopewell.	14. Coal Measures.
	13 a. Bonaventure.	104 New Glasgow.	" "
61 Truro.	14. Coal Measures.	112 Pictou Land'g.	" "
	13 a. Bonaventure.	113 Pictou.	" "
	5-7. Upper Silurian.	Shediac Branch.	
	Granite.	179 Painsec Junr.	14. Coal Measures.
78 Londonderry.	" "	184 Dorchester Rd.	" "
90 Wentworth.	14. Coal Measures.	188 Shediac.	" "
130 Maccan.	13 a. Bonaventure.	190 Pt. du Chene.	" "
138 Amherst.	" "	7 Windsor and Annapolis Railway.	
144 Anlac.	14. Coal Measures.	0 Halifax.	2. Lower Cambrian.
147 Sackville.	" "	13 Windsor June.	" "
159 Dorchester.	" "	30 - - - - -	(Outcrop of Granite.)
167 Memramcook.	13 a. Bonaventure.	39 Newport.	13 a. Bonaventure.
179 Painsec June.	14. Coal Measures.	45 Windsor.	" "
Western Division.		47 Falmouth.	" "
179 Painsec June.	14. Coal Measures.	52 Hantsport.	" "
185 Humphrey's.	" "	63 Wolfville.	16. Triassic.
189 Moncton.	" "	65 Port William.	" "
197 Boundary Crk.	13 a. Bonaventure.	70 Kentville.	" "
200 Salaberry.	" "	82 Berwick.	" "
210 Peticodiac.	" "	87 Aylesford.	" "
216 Anagance.	" "	98 Wilnot.	" "
225 Penobsquis.	" "	101 Middleton.	" "
232 Sussex.	" "	107 Lawrenceton.	" "
237 Apohaqui.	" "	115 Bridgetown.	" "
243 Norton.	" "	121 Round Hill.	" "
250 Passekeag.	" "	129 Annapolis.	9-11. Devonian.
254 Hampton.	" "	8 European and N. American R. R.	
259 Nauwigewauk.	1 a. Laurentian.	0 St. John's.	1 a. Laurentian.
267 Rothesay.	" (2 b. Acadian.)	4 Fairville.	1 b. Huronian.
279 St. John.	" "	16 Westfield.	" Granite.
Northern Division.		26 Welsford.	" "
187 Moncton.	14. Coal Measures.	36 Fmiskillen.	14. Coal Measures.
224 Welford.	" "	46 Fredericton J.	" "
310 Bathurst.	2 Lower Cambrian.	67 Harvey.	" "
329 Belledune.	13 a. Bonaventure.	86 McAdam Jun.	1 d. Mont'n. (Granite.)
347 New Mills.	" "	91 St. Croix Jun.	" "
364 Dalhousie.	5-7. Silurian.	118 Danforth.	1 b. Huronian.
372 Campbellton.	" "	160 Lincoln.	" "
395 Mill Stream.	9-11. Devonian.	183 Oldtown.	" "
433 Amque.	" "	206 Bangor.	" "
448 Sayabec.	2. Lower Cambrian.		

Devonian

Whence some of the  
rarest fossil fishes as  
Cocosteus & Cephalaspis  
were found obtained  
recently.



**Maine, New Hampshire, Vermont, Massachusetts, Rhode  
Island and Connecticut.<sup>1</sup>**


**Table of the Geological Formations of the New England States.**

Cenozoic.		Eozoic. <sup>2</sup>	
20. Quaternary.	20 b. Champlain Clays.	1 D. Huronian.	1 p. Merrimack qu. & sch.
"	20 a. Glacial Drift.	"	1 o. Hydro Mica (Talcose) Schists and Grits.
19. Tertiary.	19 c. Pliocene.	"	1 n. Quartzite, Indurated Slate, &c.
"	19 b. Miocene.	"	1 m. Felsite Porphyries.
"	19 a. Eocene.	"	1 l. Hornblende Schists.
		"	1 k. Lisbon, Lyman & Swiftwater Series of N. H.
Mesozoic.		1 C. Labrador.	1 j. Franconia Breccia.
16. Triassic.	16. Triassic.	1 B. Montalban.	1 i. Andalusite Gneiss.
		"	1 h. Concord & Hallowell Granites.
Paleozoic.		"	1 g. Lake Winnipiseogee Gneiss.
14. Carbonifer's.	14 b. Coal Measures.	"	1 f. Green Mount. Gneiss.
"	14 a. Conglomerate.	1 A. Laurentian.	1 e. Bethlehem "
8-10. Devonian.	10. s. s. prob'ly Hamilton.	"	1 d. Porphyritic "
"	9. Upper Helderb'g l.s.	"	1 c. Adirondac "
"	8. Oriskany Group.	"	1 b. K 2, K 3 of Percival.
5-7. Silurian.	7. Lower Helderberg.	"	1 a. E. Mass. Gneiss, &c.
"	5. Port Daniel (Niag'a)		
3-4. Cambro-Silurian.	4 d. Magnesian Slate (Eimons), possibly Cambrian.		
"	4 c. Loraine Shales.		
"	4 b. Utica Slate.		
"	4 a. Trenton l. s.		
"	3 c. Chazy l. s. } Stock-		
"	3 b. Lewis l. s. } bridge.		
"	3 a. Calciferous s. s.		
"	2 j. Potsdam ss. sl. & qu.		
2. Cambrian. <sup>2</sup>	2 i. Clay sl. (Georgian Group)		
"	2 h. St. Johns or Braintree Slate.		
"	2 g. Taconic Slate.		
"	2 f. Roxbury Conglom'e.		
"	2 e. Calciferous Mica Schists.		
"	2 d. Staurolite Slate and Schists.		
"	2 c. Quartzite.		
"	2 b. Andalusite Schists.		
"	2 a. Rockingham Mica Schists.		
		Eruptive Rocks. <sup>2</sup>	
		K h. Mesozoic Dolerites.	
		J j. Labradorite Diorites.	
		I i. Dolerites.	
		H h. Diorites.	
		G g. Porphyry of White Mountains.	
		F f. Granite, cutting Cambrian Slates.	
		E e. Chocoma Sienite and Granite.	
		D d. Exeter (Quincy) Sienite.	
		C c. Albany Granite.	
		B b. Conway Granite.	
		A a. Trachyte, &c., of White Mountains.	

1. Prepared by Prof. C. H. Hitchcock, State Geologist of New Hampshire.

2. The Eruptive Rocks and the subdivisions of 1 and 2 are not necessarily consecutive. 2 c, 2 d. and 2 e. may yet prove to be Silurian.

**Maine.**

<b>Maine Central Railroad.</b>		<b>Maine Central Railroad—Continued.</b>	
<b>Nos.  </b>		<b>Ms.  </b>	<b>Androscoggin Division.</b>
0 Portland.	1 c. Huronian.	0 Bath.	1 B. Montalban.
8 Falmouth.	1 B. Montalban.	9 Brunswick.	" "
15 Yarmouth.	" "	20 Lishon.	" "
20 Freeport.	" "	27 Lewiston.	" "
25 Oak Hill.	" "	34 Leeds Junction.	" "
29 Brunswick.	" "	44 North Leeds.	" "
37 Bowdoinham.	" "	54 Livermore Falls	1 c. Huronian.
44 Richmond.	" "	67 Wilton.	1 g. Lake Gneiss.
56 Gardner.	" "	74 Farmingham.	2 c. and d. Coos.
60 Hallowell.	" Granite.		
62 Augusta.	" "	<b>Knox and Lincoln Railroad.</b>	
70 Riverside.	2. Cambrian.	0 Bath.	1 B. Montalban.
81 Waterville.	" "	11 Wicasset.	1 g. Lake Gneiss.
89 Clinton.	1 c. Huronian.	18 New Castle.	" "
94 Burnham.	" "	30 Waterloo.	" "
101 Pittsfield.	" "	37 Warren.	" "
108 Newport.	" "	45 Thomaston.	3 b. Levis Limestone.
117 Etna.	" "	49 Rockland.	" and Quartzite.
125 Herman Pond.	" "		
135 Bangor.	" "	<b>Bangor and Piscataquis Railroad.</b>	
<b>Skowhegan Division.</b>		0 Bangor.	1 c. Huronian.
0 Waterville.	2. Cambrian.	12 Old Town.	" "
11 Pishon Ferry.	1 c. Huronian.	21 Alton.	" "
19 Skowhegan.	" "	31 Lagrange.	" "
<b>Lewiston Division.</b>		40 Milo.	" "
0 Portland.	1 c. Huronian.	53 Dover.	" "
8 Falmouth.	1 B. Montalban.	61 Guilford.	2. Cambrian.
19 Gray.	" "	<b>European and North American Railway.</b>	
20 Danville Junc'n	" "	0 Bangor.	1 c. Huronian.
36 Lewiston.	" "	5 Veazie.	" "
46 Leeds Junction.	" "	12 Old Town.	" "
55 Winthrop.	" "	18 Costigan.	" "
61 Readfield.	" "	27 Olamon.	" "
74 North Belgrade.	" "	36 Enfield.	" "
84 Waterville.	2. Cambrian.	45 Lincoln.	" "
<b>Belfast Division.</b>		56 Winn.	" "
0 Burnham.	1 c. Huronian.	66 Kingman.	" "
8 Unity.	" "	79 Bancroft.	" "
12 Thorndike.	" "	88 Danforth.	" "
22 Brooks.	1 B. Montalban.	102 Eaton.	" "
32 City Point.	2. Cambrian.	115 St. Croix.	7-10. Devonian.
34 Belfast.	" "		
<b>Dexter Division.</b>		<p> Railroads of Maine not found under the Maine heading are to be found in the chapters on Massachusetts and New Hampshire.</p>	
0 Newport.	1 c. Huronian.		
7 Corrinne.	" "		
14 Dexter.	" "		

New Hampshire.<sup>3</sup>

Grand Trunk Railway.		Boston, Concord & Montreal Railroad.	
0 Portland, Me.	1 c. Huronian.	0 Concord.	1 h. Concord Granite.
5 Falmouth.	"	10 Canterbury.	2 a. Rockingham Schist.
11 Yarmouth.	1 B. Montalban.	18 Tilton.	1 g. Lake Gneiss.
18 Pownal.	"	27 Laconia.	1 B. Montalban.
27 Danville Junction.	"	33 Wells.	1 d. Porphyritic Gneiss.
36 Mechanic Falls.	"	48 Ashland.	"
41 Oxford.	"	51 Plymouth.	1 B. Montalban.
47 South Paris.	"	59 Rumney.	"
55 West Paris.	"	67 Wentworth.	1 g. Lake Gneiss.
63 Locke's Mills.	"	71 Warren.	"
70 Bethel.	"	84 Haverhill.	1 c. Huronian.
80 Gillead.	"	93 Wells River.	" & 1 k. Lyman.
86 Shelburne.	"	103 Lisbon.	" & 1 k. Lisbon.
91 Gorham.	"	North Lisbon.	7. Helderberg.
98 Berlin Falls	1 g. Lake Group.	113 Littleton.	2 c. Coos & 7. Helderbg.
103 Milan.	"	120 Wing Road.	1 d. Porphyritic Gneiss.
122 Groveton.	1 c. Huronian.	124 Bethlehem.	1 c. Bethlehem Gneiss.
134 North Stratford	"	129 Twin Mountain.	" (Local Glacier.)
142 Wenlock.	Granite.	134 Fabyan's.	1 B. Montalban.
149 Island Pond.	"	120 Wing Road.	1 d. Porphyritic Gneiss.
166 Norton Mills.	"	128 Dalton.	1 c. Huronian.
175 Coaticooke.	2 c. Calciferous Mica Schist (Continued in Canada.)	135 Lancaster.	"
		145 Groveton Junction.	"
Portland and Ogdensburg Railroad.		Concord Railroad of New Hampshire.	
0 Portland, Me.	1 c. Huronian.	0 Concord.	1 h. Concord Granite.
5 Westbrook.	1 B. Montalban.	5 Suncook.	1 B. Montalban.
11 South Windham	"	9 Hooksett.	"
17 Sebago Lake.	"	13 Martin's.	1 g. Lake Gneiss.
24 Steep Falls.	"	18 Manchester.	"
32 Baldwin.	"	26 Reed's.	"
43 Brownfield.	"	29 Thornton's.	"
49 Fryeburg.	"	35 Nashua.	1 p. Merrimack Group.
60 North Conway.	B b. Conway Granite.	Suncook Valley Branch.	
66 Glen Station.	C c. Albany Granite.	Hooksett.	1 B. Montalban.
72 Upper Bartlett.	B b. Conway Granite.	Pittsfield.	2 a. Rockingham Schist.
78 Bemis.	1 B. Montalban.		
87 Crawford.	"	Concord and Portsmouth Railroad.	
91 Fabyan's.	"	0 Manchester.	1 g. Lake Gneiss.
95 Twin Mountain.	1 c. Bethlehem Gneiss.	8 Auburn.	"
101 Bethlehem.	"	18 Raymond.	1 c. Huronian.
105 Wing Road.	1 d. Porphyritic Gneiss.	24 Epping.	1 p. Merrimack Group.
114 Lunenburg.	1 k. Lyman Group.	31 New Market.	D d. Exeter Sienite.
		41 Portsmouth.	1 p. Merrimack Group.
Northern New Hampshire Railroad.		Manchester and Lawrence Railroad.	
0 Concord.	1 h. Concord Granite.	0 Manchester.	1 g. Lake Gneiss.
7 Fisherville.	1 B. Montalban.	8 Wilson's.	1 p. Merrimack Group.
14 Nor. Boscowen.	"	14 Windham.	"
17 Franklin.	"	22 Messer's.	"
25 East Andover.	"	26 Lawrence.	"
31 Potter Place.	1 d. Porphyritic Gneiss.		
44 Grafton.	"	Manchester and North Weare Railroad.	
52 Canaan.	1 l. Hornblende Schist.	0 Manchester.	1 g. Lake Gneiss.
59 Enfield.	1 c. Bethlehem Gneiss.	11 Oil Mills.	"
65 Lebanon.	"	19 North Weare.	"
69 W. R. Junction.	1 l. Hornblende Schist.		

Ms.   <b>Cheshire Railroad.</b>		Ms.   <b>Concord and Claremont Railroad.</b>	
0 Bellows Falls,	1 B. Montalban,	0 Concord,	
4 Walpole,	2 c. & d. Coos sch. & qt.	3 Mast Yard,	Ferruginous Schists,
10 Westmoreland,	1 l. Hornblende Schists,	12 Contoocook,	1 h. Concord Granite,
22 Keene,	1 e. Bethlehem Group,	18 Warner,	1 g. Lake Gneiss,
32 Troy,	1 B. Montalban,	23 Roby's Corners,	1 d. Porphyritic Gneiss,
37 Fitzwilliam,	1 a. Concord Granite,	27 Bradford,	"
43 State Line,	1 B. Montalban,	34 Newbury,	"
46 Winchester,	"	43 Newport,	1 g. Lake Gneiss,
54 S. Ashburnham,	"	48 Kellysville,	"
64 Fitchburg,	"	54 Claremont,	2 c. Caleifer's Mica Sch.
Ashuelot Railroad.		12 Contoocook,	1 h. Concord Granite,
0 Keene,	1 e. Bethlehem Group,	20 Henniker,	1 d. Porphyritic Gneiss,
8 Westport,	"	27 Hillsboro,	1 g. Lake Gneiss,
15 Ashuelot,	1 d. Porphyritic Gneiss,	§ 27 Railroads not found under New Hampshire heading will be found in Massachusetts.	
24 South Vernon,	2 c. Coos Quartz.		

3. The New Hampshire formations are believed to possess thickness as follows: Helderberg, 500 feet; Calciferous Mica Schists, 4,800 feet; Coos Group, 7,300 feet; Cambrian Slates of Connecticut Valley, 3,000 feet; Kearsarge Group, 1,300 feet; Rockingham Mica Schists, 6,000 feet; Merrimack Group, 4,300 feet; Huronian, 12,000 feet; Montalban, 10,000 feet; Lake Winnepiscogona Gneiss, 18,000 feet; Bethlehem Gneiss, 11,300 feet; Porphyritic Gneiss, 5,000 feet.

## Vermont.

Central Vermont Railroad.		Central Vermont Railroad.	
Ms.	Southern Division.	Ms.	Central Division—Continued.
127 Brattleboro,	2. Cambrian,	239 Northfield,	1 c. Huro'an Soapstone,
130 Putney,	2 d. Coos Schist,	249 Montpelier,	" and Clay Slate,
141 Westminster,	2. Cambrian,	258 Waterbury,	"
145 Bellows Falls,	1 B. Montalban,	266 Bolton, <sup>5</sup>	1 f. Green Mt. Gneiss,
153 Charleston,	2 c. & d. Coos Group,	272 Richmond,	1 c. Huronian,
163 Claremont,	2 c. Caleifer's Mica Sch.	281 Essex Junction,	Clay Slate,
171 Windsor, <sup>4</sup>	"	286 Winooski,	3 b. Lewis Limestone,
179 North Hartland,	2. Camb. & 1 c. Huro'n.	289 Burlington,	2 j. Potsdam Sandstone,
185 White River Jn.	1 l. Hornbl. Schist,	292 Milton,	3 b. Lewis Limestone,
		306 St. Albans,	2 j. Potsdam Slate,
Central Division.		Rutland Division.	
171 Hartford,	2. Cambrian,	0 Bellows Falls,	1 B. Montalban,
198 Sharon,	2 c. Caleifer's Mica Sch.	5 Rockingham,	2 c. Caleifer's Mica Sch.
205 Royston,	"	10 Chester,	1 g. Lake Gneiss,
216 Bethel,	1 c. Huro'an Soapstone,	22 Cavendish,	"
217 Randolph,	"	27 Ludlow,	1 c. Huronian,
223 Braintree,	"	34 Summit,	1 f. Green Mt. Gneiss,
232 Roxbury,	"Verde Antique,	39 E. Wallingford,	"

4. An interesting area has been traced from Lyme, N. H., to Windsor, Vt., about 30 miles long. Portions of it have been removed by the wearing action of the Connecticut. It appears to have been deposited by a powerful current derived from the melting of the glacial sheet prior to the accumulation of terraces.

5. The centre of the antilinal axis of the Green Mountains. At least eight of the general sections of the Vermont survey show this feature of structure, proving this formation to be older than the Huronian adjacent upon both sides. This structure was denied by Logan for the continuation of the Vermont rocks in Canada in his generalizations, but the descriptions of the rocks confirm the views of the Vermont geologist.

Central Vermont Railroad.	
Rutland Division—Continued.	
46 East Clarendon.	3 b. Lewis Limestone.
52 Rutland.	2 c. Calciferous Sand-rock, (Stockbridge.)
59 Sutherland Falls	3 c. Chazy Marble.
69 Brandon.	19 a. Eocene Tertiary.
74 Leicester June.	3 c. Chazy Marble.
79 Salsbury.	3 b. Lewis Limestone.
85 Middlebury.	"
89 Brooksville.	3 c. Chazy Limestone.
93 New Haven.	4 a. Trenton Limestone.
99 Vergennes.	3 c. Chazy Limestone.
109 Nor. Ferrisburg.	"
113 Shelburne.	2 j. Potsdam Sandstone.
120 Burlington.	"

## Western Division

0 St. Albans.	2 j. Potsdam Slate.
9 Swanton.	"

## Northern Division.

0 St. Albans.	2 j. Potsdam Slate.
9 East Swanton.	"
17 Province Line.	3 b. Lewis Limestone.

## Eastern Division.

0 St. Albans.	
10 Sheldon.	1 c. Huronian.
18 Enosburg Falls.	"
28 Richford.	"

## Addison Division.

0 Leicester June.	3 c. Chazy.
3 Whiting.	"
7 Shoreham.	" and 3 a.
9 Orwell.	2 c. Calcifer's Sandrock.
15 Larabee's Point	4 a. Trent. & La Motte.
16 Ticonderoga.	3 a. Calciferous s. s.

## Harlem Extension Railroad.

0 Rutland.	2 a. Calcifer's Sandrock.
6 Clarendon.	"
9 Wallingford.	"
13 S. Wallingford.	3 c. Chazy Marble.
18 Danby and Mt. Tabor.	3 a. Calcifer's Sandstone.
25 East Dorset.	" & Chazy Marble.
30 Manchester.	3 b. Lewis Limestone.
39 Arlington.	"
41 Shaftsbury.	"
51 N. Bennington.	"
55 Bennington.	"
61 T. & B. June'n.	2. Cambrian Taconic sl.

Portland and Ogdensburg Railroad.	
0 Lunenburg.	1 k Lyman Gp. & 1 c Hur
7 Miles Pond.	1 B. Montalban.
13 West Concord.	2 c. and d. Coos Group.
21 St. Johnsbury.	2 c. Calcifer's Mica Schs.
33 Danville.	"
41 Walden.	"
49 Greensboro.	"
57 Hardwick.	"
62 Wolecott.	1 c. Huronian.
70 Morrisville.	"
73 Hyde Park.	"
78 Johnson.	"

## Connecticut and Passumpsic Railroad.

0 White Riv. Jun.	1 l. Hornblende Schist.
5 Norwich.	"
10 Pompanoosue.	"
15 Thetford.	2 c. and d. Coos Group.
22 Fairlee.	1 k Lyman Gp. & 1 c Hur
28 Bradford.	"
36 Newbury.	"
40 Wells River.	"
51 Barnet.	2 c. Calcifer's Mica Sch.
58 Passumpsic.	"
61 St. Johnsbury.	"
69 Lyndonville.	"
77 West Burke.	"
90 Harton.	"
100 Coventry.	"
105 Newport.	2. Cambrian.

## Saratoga and Champlain Railroad.

0 Rutland.	
11 Westleton.	2. Cambrian Slates.
8 Granville.	"
19 Rupert.	"
26 Salem.	"
34 Eagle Bridge.	"

Legate Springs  
Trenton.

Massachusetts.

Eastern Railroad.		Boston and Maine Railroad.	
No.		No.	
0 Boston.	20 a. Glacial Drift.	0 Boston.	20 a. Glacial Drift.
2 Somerville.	2. Cambrian.	12 Reading.	1 l. Hornblende Schists.
3 Everett.	"	18 Wilmington.	1 A. Laurentian.
5 Chelsea.	20 a. Glacial Drift.	23 Andover.	"
11 Lynn.	1 a. Huronian, (Porphy)	26 South Lawrence	1 p. Merrimack Group.
16 Salem.	D d. Exeter Sienite.	32 Bradford.	"
23 Wenham.	"	38 Plaistow.	"
28 Ipswich.	"	41 Newton.	"
31 Rowley.	"	45 East Kingston.	"
37 Newburyport.	1 A. Laurentian.	51 Exeter.	D d. Exeter Sienite.
39 Salisbury.	D d. Exeter Sienite.	58 New Market.	"
43 Seabrook.	1 p. Merrimack.	68 Dover.	"
47 Hampton.	"	72 Salmon Falls.	1 p. Merrimack Group.
51 Greenland.	"	78 North Berwick.	"
56 Portsmouth.	"	85 Wells.	D d. Exeter Sienite.
58 Kittery.	"	90 Kennebunk.	2. Cambrian.
63 Elliott.	"	100 Saco.	"
67 Conway Junction.	"	109 Scarborough Beach.	1 A. Huronian.
70 So. Berwick Junction.	"	116 Portland.	"
75 North Berwick.	"	<b>Boston, Lowell and Nashua Railroad.</b>	
80 Wells.	D d. Exeter Sienite.	0 Boston.	
89 Kennebunk.	2. Cambrian.	8 Winchester.	D d. Exeter Sienite.
94 Biddeford.	" and Con'y Granite.	15 Wilmington.	1 A. Laurentian.
95 Saco.	2. Cambrian.	22 Billerica.	"
103 Scarborough.	1 c. Huronian.	26 Lowell.	1 p. Merrimack Group.
108 Portland.	"	29 No. Chelmsford.	"
<b>Boston, Salem and Rockport Division.</b>		40 Nashua.	"
Beverley.	D d. Exeter Sienite.	45 Merrimack.	"
Manchester.	"	51 Milford.	1 g. Lake Gneiss.
Gloucester.	"	54 Wilton.	Rockingham Schists.
Rockport.	"	59 Lyndeboro.	1 g. Quartz Lake Gneiss
<b>Amesbury Branch.</b>		66 Greenfield.	1 g. Lake Gneiss.
39 Salisbury.	D d. Exeter Sienite.	<b>Danvers and Newburyport Railroad.</b>	
43 Amesbury.	20 a. Glacial Drift.	0 Boston.	
<b>Great Falls, Rochester and Conway Branch.</b>		10 Wakefield.	D d. Exeter Sienite.
73 Great Falls.	1 p. Merrimack Quartz.	13 Lynnfield.	"
79 Rochester.	2 b. Andalusite Schists.	19 Danvers.	"
109 Wolfboro.	1 g. Lake Gneiss.	28 Boxford.	1 l. Hornblende Schists.
138 North Conway.	B b. Conway Granite.	31 Georgetown.	"
<b>Salem and Lawrence Branch.</b>		40 Newburyport.	1 A. Laurentian.
Salem.	Sienite and Diorite.	<b>Old Colony Railroad.</b>	
Middletown.	1 l. Hornblende Schists.	0 Boston.	
Lawrence.	1 p. Merrimack Group.	5 Neponset.	2. Cambrian.
		10 Braintree.	"
		15 Randolph.	D d. Exeter Sienite.
		19 Stoughton.	"
		25 Easton.	"
		31 Raynham.	14. Carboniferous.
		34 Taunton.	"
		43 Somersct.	Granite.

6. This and the adjoining towns are chiefly occupied by a profusion of lenticular-shaped drift hills, believed to be moraines of ancient glaciers, and different from the usual *grand moraine* of glacial drift. The hills may be 200 feet high, and their longer axis run southeasterly, being parallel with the course of the striae in the neighborhood. In the Merrimack and Connecticut Valley a few have been found having a direction to the south and west-of-south, but agreeing with the course of adjoining striae.

Old Colony Railroad—Continued.	
Ms.	Division.
15 Holbrook.	D d. Exeter Sienite.
20 Brockton.	"
27 Bridgewater.	14. Carboniferous.
34 Middleboro.	"
45 Assonet.	Granite.
49 Fall River.	14 a. Conglomeratic.
56 Bristol Ferry.	14 b. Coal Measures.
68 Newport.	"

(Continued in Rhode Island.)

## South Shore, Duxbury and Cohasset Division.

0 Boston.	
10 Braintree.	2. Cambrian.
11 Weymouth.	20 a. Glacial Drift.
17 Hingham.	D d. Exeter Sienite.
21 Cohasset.	"
39 Egypt.	"
Sea View.	"
37 Duxbury.	"
Plymouth.	20 a. Glacial Drift.
45 Fremont.	"
49 Wareham.	"
54 Cohasset Narr's	"
62 Sandwich.	"
69 W. Barnstable.	"
73 Barnstable.	"
75 Yarmouth.	"
84 Harwich.	"
94 Orleans.	"
106 Wellfleet.	"
120 Provincetown.	"
68 Falmouth.	"
71 Wood's Hole.	"

## Boston, Clinton and Fitchburg Railroad.

0 Boston.	
22 S. Framingham.	1 A. Laurentian.
28 Fayville.	"
32 Marlboro.	1 l. Hornblende Schists.
41 Berlin.	1 p. Merrimack qu. & sch
48 Clinton.	2. Cambrian.
50 Pratt's Junction	1 p. Merrimack qu. & sch
59 Fitchburg.	Granite.

## Fitchburg and Worcester Division.

0 Fitchburg.	
5 Leominster.	1 p. Merrimack qu. & sch
9 Pratt's Junction	"
14 Sterling Junc'n.	"
26 Worcester.	" & Granite.

## Mansfield and Framingham Division.

0 Fitchburg.	
40 Sherborn.	D d. Exeter Sienite.
45 Medfield.	"
49 Walpole.	2. Cambrian.
58 Mansfield.	14 b. Coal Measures.
69 Taunton.	"
89 New Bedford.	1 A. Laurentian.

## Boston, Clinton and Fitchburg—Continued.

Ms.	Framingham and Lowell Division.
0 Lowell.	1 p. Merrimack qu. & sch
13 Acton.	1 A. Laurentian.
20 Sudbury.	"
26 Framingham.	"

## Boston and Providence Railroad.

0 Boston.	
5 Forest Hill.	20 a. Drift Moraine.
9 Readville.	1 c. Huronian Porphyry.
14 Canton.	2. Cambrian.
18 Sharon.	D d. Exeter Sienite.
24 Mansfield.	14 b. Coal Measures.
31 Attleboro.	"

## New York and New England.

0 Boston.	
9 Readville.	1 c. Huronian Porphyry.
19 Walpole.	2. Cambrian.
23 Norfolk.	D d. Exeter Sienite.
27 Franklin.	"
30 Wadsworth.	1 A. Laurentian.
36 Blackstone.	"
41 Ironstone.	"
48 Douglas.	2 e. Quartzite.
53 E. Thompeon.	1 B. Montalban.

## Norwich and Worcester Division.

0 Worcester.	1 p. Merrimack qu. & sch
4 Auburn.	"
11 Oxford.	"
16 Webster.	1 A. Laurentian.

## Woonsocket Division.

0 Boston.	
12 Weedham.	2. Cambrian.
19 Medfield.	1 m. Huron'n Porphyry.
25 Medway.	D d. Exeter Sienite.
32 Bellingham.	1 c. Huronian.
38 Woonsocket.	2. Cambrian.

## Nashua and Acton Railroad.

0 Nashua.	1 p. Merrimack qu. & sch
5 Dunstable.	1 g. Lake Gneiss.
12 Granitaville.	1 p. Merrimack qu. & sch
22 Acton.	1 A. Laurentian.
24 Concord Junc'n	"

## Worcester and Nashua Railroad.

0 Worcester.	1 p. Merrimack qu. & sch
10 Oakdale.	"
17 Clinton.	2. Cambrian.
25 Harvard.	1 p. Merrimack qu. & sch
31 Groton.	"
39 Hollis.	"
46 Nashua.	"
57 Windham.	"
65 Sandown.	"
74 Epping.	"
80 Lee.	"
88 Barrington.	"
95 Rochester.	2 b. Andalusite Schists.
147 Portland.	1 c. Huronian.

Ms. 1 Providence and Worcester R. R.

16 Woonsocket.	2. Cambrian.
20 Millville.	"
25 Uxbridge.	1 A. Laurentian.
31 Northbridge.	"
37 Millbury.	"
44 Worcester.	"

Boston, Barre and Gardner Railroad.

0 Boston.	
44 Worcester.	1 p. Merrimack qu. & sch
52 Holden.	"
60 Princeton.	1 g. Lake Gneiss.
70 Gardner.	"

Ware River Railroad.

0 Palmer.	1 J. Porphyritic Gneiss.
3 Thorndike.	"
12 Ware.	"
21 Barre Plaines.	1 g. Lake Gneiss.
27 Templeton.	"
43 Baldwinville.	"
48 Winchendon.	"

Springfield, Athol & North-Eastern R. R.

0 Athol.	1 g. Lake Gneiss.
8 New Salem.	"
16 Greenwich Vill.	"
21 Enfield.	"
30 Barrett's Junction	D d. Sienite.
37 Collins.	"
41 Ludlow.	" & 16. Triassic.
48 Springfield.	16. Triassic.

New London Northern Railroad.

50 Stafford.	1 B. Montalban.
60 South Monson.	"
65 Palmer.	1 d. Porphyritic Gneiss.
70 Barrett's.	D d. Sienite.
75 Belchertown.	1 B. Montalban.
80 Dwight's.	20 a. Drift.
85 Amherst.	16. Triassic.
90 Leverett.	1 B. Montalban.
95 South Montague	16. Triassic.
100 Miller's Falls.	1 B. Montalban.
103 Northfield.	16. Triassic.
110 South Vernon.	2 c. Coos Quartzite.
116 Vernon.	1 c. Bethlehem Gneiss.
121 Brattleboro.	2. Cambrian.

Ms. | New Haven and Northampton R. R.

0 Williamsburg.	Calcareous Mica Schist.
5 Florence.	D d. Sienite.
8 Northampton.	"
13 East Hampton.	16. Triassic.
16 Southampton.	"
23 Westfield.	"
29 Southwick.	"

Connecticut River Railroad.

0 Springfield.	16. Triassic.
7 Chicopee Jun'n.	"
8 Holyoke.	"
13 Smith's Ferry.	"
15 Mount Tom. <sup>7</sup>	"
17 Northampton.	D d. Sienite.
21 Hatfield.	16. Triassic.
26 Whately.	"
33 Deerfield.	"
36 Greenfield. <sup>8</sup>	"
40 Bernardstown. <sup>9</sup>	2 c. Quartzite and Coos.
50 South Vernon.	"

New Haven, Hartford & Springfield R. R.

0 Springfield.	16. Triassic.
4 Long Meadow.	"

Housatonic Railroad.

0 Pittsfield.	3 b. & c. Stockbridge ls.
7 Dewey's.	"
8 Lenox.	"
11 Lee.	"
17 Stockbridge.	"
23 Van Deusenville	"
25 Barrington.	"
31 Sheffield.	"
35 Ashley Falls.	"
37 Canaan.	"

Fitchburg, Troy and Boston Railroad.

0 Boston.	
10 Waltham.	1 c. Huronian.
20 Concord.	1 A. Laurentian.
27 West Acton.	"
35 Ayer Junction.	1 p. Merrimack qu. & sch
40 Shirley.	"
46 Leominster.	"
50 Fitchburg.	"
58 Westminster.	Granite.

7. This is the locality furnishing for the Amherst Museum the large rows of tracks of *Brontozoum Giganteum*, the largest of the Triassic birds. Across the river, in South Hadley, is an excellent locality of *Otozoum Moodii*, so named for Pliny Moody, who was the first person in the Connecticut Valley known to have observed any of the footmarks. A specimen is preserved which he dug up in 1830, saying that "the tracks were made by Noah's raven."

8. The noted locality of fossil footmarks is at Turners Falls, on a branch of the F. T. & B. R. R., four miles distant. W. W. Draper was the first person to observe them, in 1835. He suggested that they were "turkey tracks made 2,000 years ago." His impressions were communicated to Col. Wilson, who called the attention of Dexter Marsh to them. Mr. Marsh showed them to Dr. James Deans, who requested Prof. E. Hitchcock to investigate them scientifically. This was done, and the results accumulated in the Hitchcock Technological Museum at Amherst, where are over 20,000 separate ichnites, illustrating about 160 species, all from the Connecticut Valley.

9. This is the town where the celebrated Helderberg limestone crops out. It is believed to be a remnant of a once extensive deposit, preserved accidentally from erosion, and resting upon or folded beneath the Coos Quartzite.



**Fitchburg, Troy & Boston R. R.—Continued.**

60 Ashburnham.	1 g. Lake Gneiss.
65 Gardner.	1 B. Montalban.
71 Buldwinville.	"
77 Royalston.	"
80 Athol.	"
87 Orange.	"
92 Ewing.	"
98 Miller's Falls.	"
102 Montague.	"
106 Greenfield. <sup>6</sup>	16. Triassic.
109 Bardwell's.	"
117 Shelburne Falls.	1 f. Green Mt. Gneiss.
128 Charlemont.	"
132 Zoar.	"
136 Hoosac Tunnel.	<sup>10</sup> "
143 North Adams.	3 b. & c. Stockbridge ls.
148 Williamstown.	"
158 Petersburg.	2 g. Taconic Schists.

**Boston and Albany Railroad.**

0 Boston.	
5 Brighton.	2. Cambrian.
21 S. Framingham.	1 A. Laurentian.
28 Southville.	"
38 Grafton.	"
49 Worcester.	1 p. Merrimack qu. & sch
52 Rochdale.	1 g. Lake Gneiss.
62 Speneer.	"

**Boston and Albany Railroad—Continued.**

67 Brookfield.	1 g. Lake Gneiss.
73 Warren.	"
83 Palmer.	1 d. Porph. Gneiss.
89 Wilbraham.	16. Triassic.
98 Springfield.	"
108 Westfield.	"
116 Russell.	2 e. Calcifer's Mica Sch.
119 Huntington.	"
126 Chester.	1 e. Huronian.
131 Middlefield.	"
135 Becket.	1 f. Green Mt. Gneiss.
138 Washington.	"
143 Hinsdale.	"
146 Dalton.	2 j. Potsdam.
151 Pittsfield.	3 b. & c. Stockbridge ls.
159 Richmond.	"
162 State Line.	2 g. Taconic Schists.

**Milford Branch.**

S. Framingham.	1 A. Laurentian.
Milford.	"

**Pittsfield and North Adams Branch.**

0 Pittsfield.	3 b. & c. Stockbridge ls.
6 Berkshire.	"
10 Cheshire.	"
15 South Adams.	"
20 North Adams.	"

10. The mountain is believed to be an inverted and very much crushed anticlinal.

**Rhode Island.**

**Ms. | Providence and Springfield Railroad.**

0 Providence.	14. Carboniferous.
5 Allendale.	1 D. Huronian.
10 Stillwater.	1 A. Laurentian.
17 Tarklin.	"
23 Pascoag.	"

**Providence and Worcester Railroad.**

0 Providence.	14. Carboniferous.
6 Valley Falls.	14 b. Coal Measures.
9 Ashton.	2. Cambrian.
16 Woonsocket.	" ?

**Boston and Providence Railroad.**

0 Providence.	14. Carboniferous.
4 Pawtucket.	14 b. Coal Measures.
5 East Junction.	

**Providence, Warren and Bristol Railroad.**

0 Providence.	14. Carboniferous.
7 Nayatt.	"
10 Warren.	"
14 Bristol.	"
16 Fall River.	14 a. Carb. Conglom'te.

**Old Colony Railroad.**

0 Newport.	14 b. Coal Measures.
12 Bristol Ferry.	"
14 Tiverton.	Granite.
19 Fall River.	14 a. Carb. Conglom'te.

## Connecticut.

Housatonic Railroad.		New Haven & Northampton R. R.— Collinsville Branch.	
0 Bridgeport.	1 d. Porphyritic Gneiss.	Farmington.	16. Triassic.
10 Stepney.	1 B. Montalban.	Unionville.	"
15 Botsford.	"	Collinsville.	1 B. Montalban.
19 Newtown.	"	New Hartford.	"
23 Hawleyville.	"	<b>New York, New Haven, Hartford &amp; Springfield Railroad.</b>	
27 Brookfield Jun.	"	0 New York.	1 B. Montalban.
35 New Milford.	"	30 Greenwich.	"
42 Merwinsville.	"	35 Stamford.	"
48 Kent. <sup>11</sup>	1 A. Laurentian.	43 South Norwalk.	"
57 Cornwall Bridge.	"	50 Southport.	"
65 Lime Rock.	3 b. & c. Stockbridge l.s.	57 Bridgeport.	1 d. Porphyritic Gneiss.
73 Canaan.	"	60 Stratford.	"
<b>Shepaug Railroad.</b>		65 Milford.	2 c. Calcifer's Mica Sch.
0 Litchfield.	1 b. Montalban.	74 New Haven.	16. Triassic.
6 Morris.	"	80 North Haven.	"
13 Washington.	"	86 Wallingford.	"
20 Roxbury.	"	92 Meriden.	"
32 Hawleyville.	"	99 Berlin.	"
38 Bethel.	"	105 Newington.	"
59 South Norwalk.	"	110 Hartford.	"
<b>Naugatuck Railroad.</b>		116 Windsor.	"
0 Bridgeport.	1 d. Porphyritic Gneiss.	122 Windsor Locks.	"
3 Stratford.	"	127 Thompsonville.	"
13 Derby.	"	136 Springfield.	"
15 Ansonia.	"	<b>Shore Line Division.</b>	
19 Seymour.	1 B. Montalban.	0 New Haven.	16. Triassic.
26 Naugatuck.	"	8 Branford.	1 A. Laurentian.
32 Waterbury.	"	16 Guilford.	1 B. Montalban.
34 Waterville.	"	23 Clinton.	"
41 Thomaston.	"	28 Westbrook.	"
46 Campville.	"	31 Saybrook.	"
49 Litchfield.	"	33 Lyme.	1 A. Laurentian.
52 Wolcottsville.	"	43 East Lyme.	"
57 Burrville.	1 A. Laurentian.	50 New London.	"
61 Winsted.	"	<b>Connecticut Central Railroad.</b>	
32 Waterbury.	1 B. Montalban.	Hartford.	16. Triassic.
35 Oakville.	"	South Windsor.	"
38 Watertown.	"	Melrose.	"
<b>New Haven and Northampton Railroad.</b>		Hazardville.	"
0 New Haven.	16. Triassic.	<b>Connecticut Valley Railroad.</b>	
9 Mount Carmel.	"	0 Hartford.	16. Triassic.
15 Cheshire.	"	8 Rocky Hill.	"
22 Southington.	"	15 Middletown.	"
27 Plainville.	"	24 Higganum.	1 A. Laurentian.
31 Farmington.	"	30 Goodspeed.	1 B. Montalban.
37 Avon.	"	38 Essex.	"
42 Simsbury.	"	44 Saybrook Point.	"
47 Granby.	"		

11. The oldest formations of New England assume ovoidal shapes, as the area of Laurentian, near Kent, and Winsted, Ct., Vernon, Vt., Winchester, N. H., &c. The later series are grouped concentrically around them, and thus an easy way of determining the age and inversion is afforded.

Ms.   New London Northern Railroad.		Ms.   Hartford, Providence & Fishkill R. R.	
0 New London.	1 A. Laurentian.	0 Waterbury.	1 B. Montalban.
6 Montville.	"	11 Terryville.	"
13 Norwich.	1 B. Montalban.	19 Plainville.	10. Triassic.
20 Franklin.	"	24 New Britain.	"
26 South Windham.	"	33 Hartford.	"
30 Willimantic.	"	42 Manchester.	"
36 Eagleville.	"	49 Vernon.	1 B. Montalban.
44 Tolland.	"	56 Andover.	"
50 Stafford.	"	65 Willimantic.	"
<b>Stonington and Providence Railroad.</b>		75 Baltic.	"
0 New London.	1 A. Laurentian.	88 Plainfield.	"
9 Mystic.	"	(Rhode Island.)	
12 Stonington.	"	91 Moosup.	1 A. Laurentian.
(Rhode Island.)		96 Oneco.	"
18 Westerly.	1 A. Laurentian.	101 Summit.	"
26 Wood Riv. Jun.	"	109 Washington.	"
35 Kingston.	"	114 Natick.	"
42 Wickford Junc.	"	123 Providence.	14. Carboniferous.
48 Greenwich.	14. Carboniferous.	<b>New York and New England R. R.</b>	
53 Hill Grove.	"	0 Willimantic.	1 B. Montalban.
57 Auburn.	"	9 Goshen.	"
62 Providence.	"	20 Pomfret.	"
<b>Connecticut Western Railroad.</b>		25 Putnam.	"
0 Hartford.	16. Triassic.	29 Thomson.	"
6 Bloomfield.	"	33 East Thomson.	"
12 Tariffville.	"	<b>Norwich and Worcester Division.</b>	
15 Simsbury.	"	0 New London.	1 A. Laurentian.
22 Canton.	1 B. Montalban.	13 Norwich.	1 B. Montalban.
24 Collinsville.	"	23 Jewett City.	"
29 New Hartford.	"	29 Plainfield.	"
36 Winsted.	1 A. Laurentian.	34 Wauregan.	"
45 Norfolk.	"	42 Daysville.	"
55 Canaan.	3 b. & c. Stockbridge ls.	47 Putnam.	"
62 Salisbury.	"	52 Grosvenor Dale.	"
69 Millerton.	"	57 Webster.	"

