

**CIHM
Microfiche
Series
(Monographs)**

**ICMH
Collection de
microfiches
(monographies)**



Canadian Institute for Historical Microreproductions / Institut canadien de microreproductions historiques

© 1998

The copy filmed here has been reproduced thanks to the generosity of:

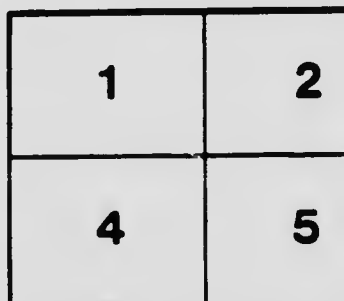
Stauffer Library
Queen's University

The images appearing here are the best quality possible considering the condition and legibility of the original copy and in keeping with the filming contract specifications.

Original copies in printed paper covers are filmed beginning with the front cover and ending on the last page with a printed or illustrated impression, or the back cover when appropriate. All other original copies are filmed beginning on the first page with a printed or illustrated impression, and ending on the last page with a printed or illustrated impression.

The last recorded frame on each microfiche shall contain the symbol \rightarrow (meaning "CONTINUED"), or the symbol ∇ (meaning "END"), whichever applies.

Maps, plates, charts, etc., may be filmed at different reduction ratios. Those too large to be entirely included in one exposure are filmed beginning in the upper left hand corner, left to right and top to bottom, as many frames as required. The following diagrams illustrate the method:



L'exemplaire filmé fut reproduit grâce à la générosité de:

Stauffer Library
Queen's University

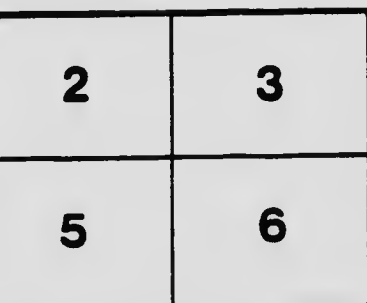
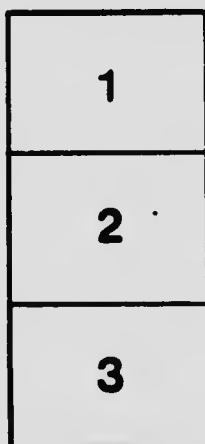
Les images suivantes ont été reproduites avec le plus grand soin, compte tenu de la condition et de la netteté de l'exemplaire filmé, et en conformité avec les conditions du contrat de filmage.

Les exemplaires originaux dont la couverture en papier est imprimée sont filmés en commençant par le premier plat et en terminant soit par la dernière page qui comporte une empreinte d'impression ou d'illustration, soit par le second plat, selon le cas. Tous les autres exemplaires originaux sont filmés en commençant par la première page qui comporte une empreinte d'impression ou d'illustration et en terminant par la dernière page qui comporte une telle empreinte.

Un des symboles suivants apparaîtra sur la dernière image de chaque microfiche, selon le cas: le symbole \blackrightarrow signifie "A SUIVRE", le symbole ∇ signifie "FIN".

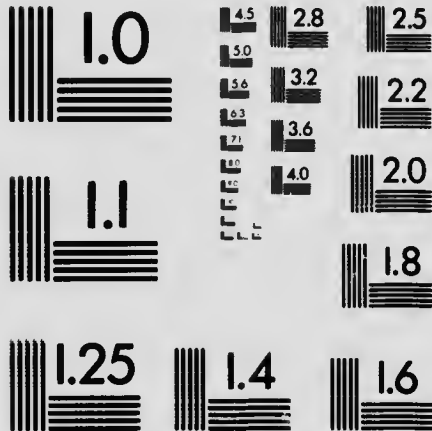
Les cartes, planches, tableaux, etc., peuvent être filmés à des taux de réduction différents.

Lorsque le document est trop grand pour être reproduit en un seul cliché, il est filmé à partir de l'angle supérieur gauche, de gauche à droite, et de haut en bas, en prenant le nombre d'images nécessaire. Les diagrammes suivants illustrent la méthode.



MICROCOPY RESOLUTION TEST CHART

(ANSI and ISO TEST CHART No. 2)



APPLIED IMAGE Inc

1653 East Main Street
Rochester, New York 14609 USA
(716) 482-0300 - Phone
(716) 288-5989 - Fax

NIGHT: THE HOUSE OF
DREAMS: TWO POEMS
BY W. WILFRED CAMPBELL;
ISSUED PRIVATELY TO
HIS FRIENDS FOR THE
NEW YEAR, 1903.

Frederick Fisher Esq
With the Seasons
Greetings
from
W. Wilfred Campbell

38 Charles Street,
Ottawa,
Canada.

LPFS 8455. A56. V5

NIGHT.

HOME of the pure in heart and tranquil mind,
Temple of love's white silence, holy Night ;
Greater than splendid thought or iron might,
Thy lofty peace unswept by any wind
Of human sorrow, leaves all care behind.
Uplifted to the zenith of thy height,
My world. An spirit drinks thy calm delight,
And, chrysalis-like, lets slip its earthy rind.

The blinded feuds, base passions and fierce guilt,
Vain pride and falseness that enslaved the day,
Here dwindle and fade with all that mocks and
mars ;

Where wisdom, awed, walks hushed with lips that
pray,

'Neath this high minster, dim, invisible, built
Vast, walled with deeps of space and roofed with
stars.

THE HOUSE OF DREAMS.

25. 1. 19
MID all earth's mighty builders,
That ancient builder, Time,
Laughs at the art that crumbles
And the airy arts of rhyme.

But the story of god-like passion,
The mighty hate or desire,
Lives, when the hand that penned it
Is ruin with Sidon and Tyre.

Greater than all earth's temples
Glories of art's high goal,
Is the mystical, magical temple
That God built for the soul.

Not in a day or hour,
Not in a thousand years,
He hath fashioned for love to dwell in
A temple of prayers and tears.

'Tis the dream and not the deed
That doth, eternal, endure ;
The spirit, and not the form,
That makes earth's literature.

Lorne Pierce



